

Data Path : Z:\voasrv\HPCHEM1\MSVOA\_V\DATA\VV092024\  
 Data File : VV037420.D  
 Acq On : 20 Sep 2024 10:11  
 Operator : SY/MD  
 Sample : P3994-05DL 200X  
 Misc : 25mL/MSVOA\_V/WATER  
 ALS Vial : 1 Sample Multiplier: 1

Instrument :  
 MSVOA\_V  
 ClientSampleId :  
 C0B21DL

Quant Time: Sep 20 23:33:13 2024  
 Quant Method : Z:\voasrv\HPCHEM1\MSVOA\_V\Method\SFAMVTR091024WMA.M  
 Quant Title : TRACE VOA SFAM1.0  
 QLast Update : Fri Sep 20 23:32:27 2024  
 Response via : Initial Calibration

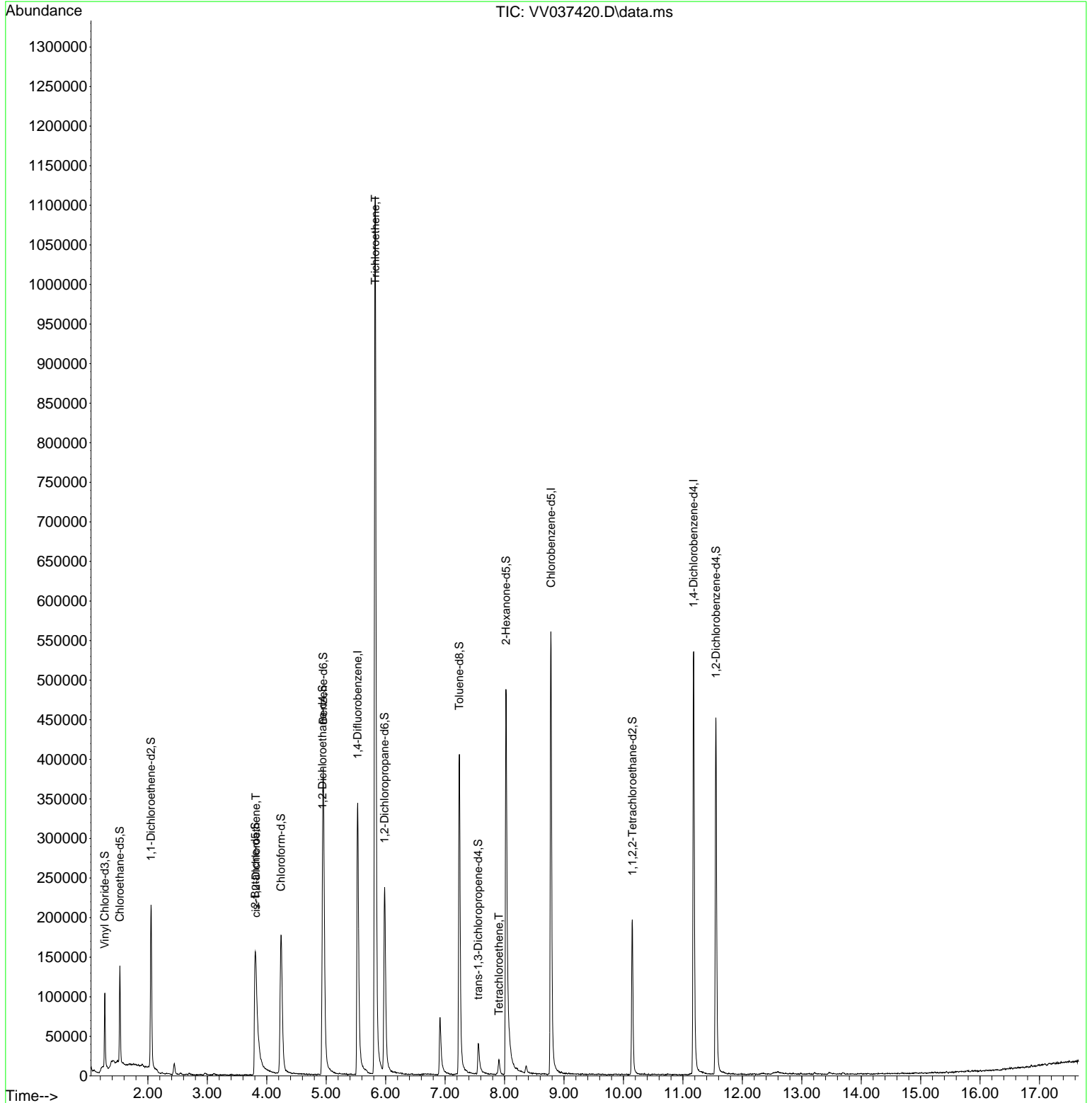
Compound	R.T.	QIon	Response	Conc	Units	Dev(Min)
Internal Standards						
1) 1,4-Difluorobenzene	5.529	114	313690	5.000	ug/L	0.00
28) Chlorobenzene-d5	8.780	117	331424	5.000	ug/L	0.00
58) 1,4-Dichlorobenzene-d4	11.181	152	149808	5.000	ug/L	0.00
System Monitoring Compounds						
4) Vinyl Chloride-d3	1.275	65	59998	3.260	ug/L	0.00
Spiked Amount	5.000	Range 40 - 130	Recovery =	65.200%		
7) Chloroethane-d5	1.529	69	76919	4.009	ug/L	0.00
Spiked Amount	5.000	Range 65 - 130	Recovery =	80.200%		
11) 1,1-Dichloroethene-d2	2.053	65	34379	3.617	ug/L	0.00
Spiked Amount	5.000	Range 60 - 125	Recovery =	72.400%		
20) 2-Butanone-d5	3.805	46	247233	44.952	ug/L	-0.02
Spiked Amount	50.000	Range 40 - 130	Recovery =	89.900%		
24) Chloroform-d	4.240	84	200918	4.497	ug/L	0.00
Spiked Amount	5.000	Range 70 - 125	Recovery =	90.000%		
26) 1,2-Dichloroethane-d4	4.937	65	95535	4.566	ug/L	0.00
Spiked Amount	5.000	Range 70 - 130	Recovery =	91.400%		
32) Benzene-d6	4.950	84	361745	4.071	ug/L	0.00
Spiked Amount	5.000	Range 70 - 125	Recovery =	81.400%		
36) 1,2-Dichloropropane-d6	5.982	67	122788	4.443	ug/L	0.00
Spiked Amount	5.000	Range 60 - 140	Recovery =	88.800%		
41) Toluene-d8	7.239	98	295261	3.688	ug/L	0.00
Spiked Amount	5.000	Range 70 - 130	Recovery =	73.800%		
43) trans-1,3-Dichloroprop...	7.558	79	28960	3.186	ug/L	0.00
Spiked Amount	5.000	Range 55 - 130	Recovery =	63.800%		
46) 2-Hexanone-d5	8.024	63	201622	45.399	ug/L	0.00
Spiked Amount	50.000	Range 45 - 130	Recovery =	90.800%		
56) 1,1,2,2-Tetrachloroeth...	10.149	84	102585	4.555	ug/L	0.00
Spiked Amount	5.000	Range 65 - 120	Recovery =	91.000%		
66) 1,2-Dichlorobenzene-d4	11.558	152	121718	4.570	ug/L	0.00
Spiked Amount	5.000	Range 80 - 120	Recovery =	91.400%		
Target Compounds						
22) cis-1,2-Dichloroethene	3.818	96	16584	0.663	ug/L	96
34) Trichloroethene	5.825	95	407622	15.148	ug/L	98
47) Tetrachloroethene	7.905	164	4640	0.241	ug/L	96

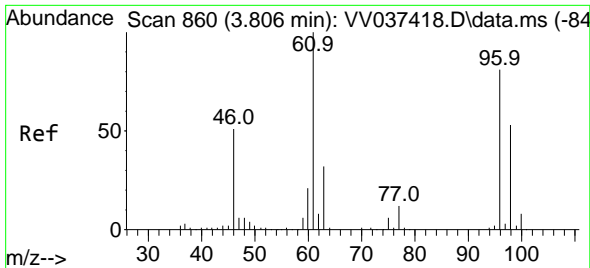
(#) = qualifier out of range (m) = manual integration (+) = signals summed

Data Path : Z:\voasrv\HPCHEM1\MSVOA\_V\DATA\VV092024\  
 Data File : VV037420.D  
 Acq On : 20 Sep 2024 10:11  
 Operator : SY/MD  
 Sample : P3994-05DL 200X  
 Misc : 25mL/MSVOA\_V/WATER  
 ALS Vial : 1 Sample Multiplier: 1

Instrument :  
 MSVOA\_V  
 ClientSampleId :  
 C0B21DL

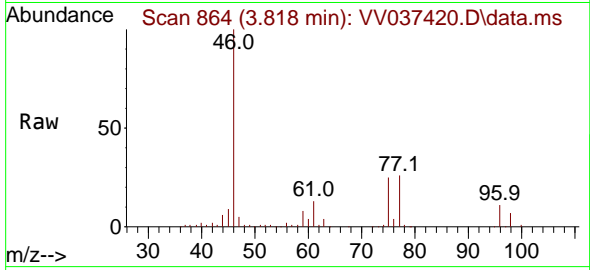
Quant Time: Sep 20 23:33:13 2024  
 Quant Method : Z:\voasrv\HPCHEM1\MSVOA\_V\Method\SFAMVTR091024WMA.M  
 Quant Title : TRACE VOA SFAM1.0  
 QLast Update : Fri Sep 20 23:32:27 2024  
 Response via : Initial Calibration



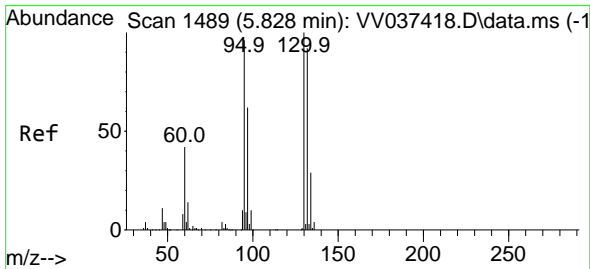
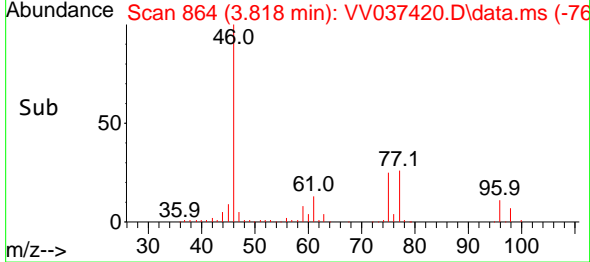
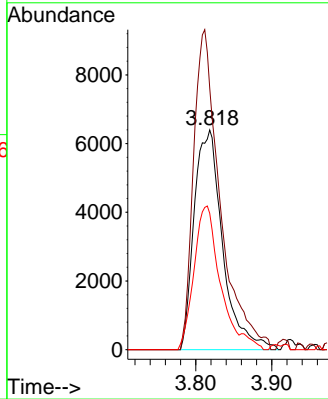


#22  
 cis-1,2-Dichloroethene  
 Concen: 0.663 ug/L  
 RT: 3.818 min Scan# 860  
 Delta R.T. 0.013 min  
 Lab File: VV037420.D  
 Acq: 20 Sep 2024 10:11

Instrument :  
 MSVOA\_V  
 ClientSampleId :  
 COB21DL

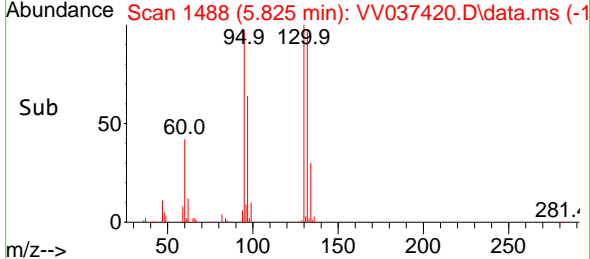
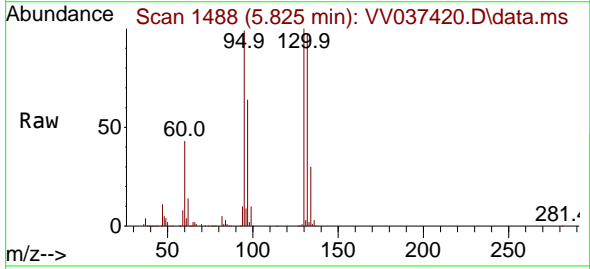
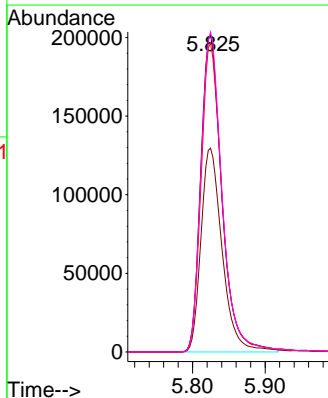


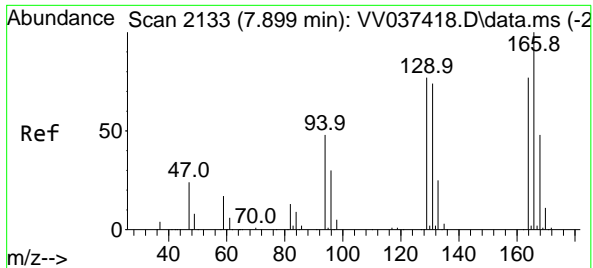
Tgt Ion: 96 Resp: 16584  
 Ion Ratio Lower Upper  
 96 100  
 61 119.1 87.6 162.6  
 98 62.1 44.9 83.5



#34  
 Trichloroethene  
 Concen: 15.148 ug/L  
 RT: 5.825 min Scan# 1488  
 Delta R.T. -0.003 min  
 Lab File: VV037420.D  
 Acq: 20 Sep 2024 10:11

Tgt Ion: 95 Resp: 407622  
 Ion Ratio Lower Upper  
 95 100  
 97 64.2 46.5 86.5  
 132 97.4 65.5 121.7  
 130 100.8 71.3 132.3





#47  
 Tetrachloroethene  
 Concen: 0.241 ug/L  
 RT: 7.905 min Scan# 2135  
 Delta R.T. 0.006 min  
 Lab File: VV037420.D  
 Acq: 20 Sep 2024 10:11

Instrument : MSVOA\_V  
 ClientSampleId : C0B21DL

Tgt Ion:164 Resp: 4640

Ion	Ratio	Lower	Upper
164	100		
129	96.9	69.2	128.4
131	98.2	66.6	123.8
166	132.7	88.8	165.0

