

Data Path : Z:\voasrv\HPCHEM1\MSVOA_V\DATA\VV092024\
 Data File : VV037428.D
 Acq On : 20 Sep 2024 13:24
 Operator : SY/MD
 Sample : P3994-10
 Misc : 25mL/MSVOA_V/WATER
 ALS Vial : 1 Sample Multiplier: 1

Instrument :
 MSVOA_V
 ClientSampleId :
 C0B45

Quant Time: Sep 20 23:35:25 2024
 Quant Method : Z:\voasrv\HPCHEM1\MSVOA_V\Method\SFAMVTR091024WMA.M
 Quant Title : TRACE VOA SFAM1.0
 QLast Update : Fri Sep 20 23:32:27 2024
 Response via : Initial Calibration

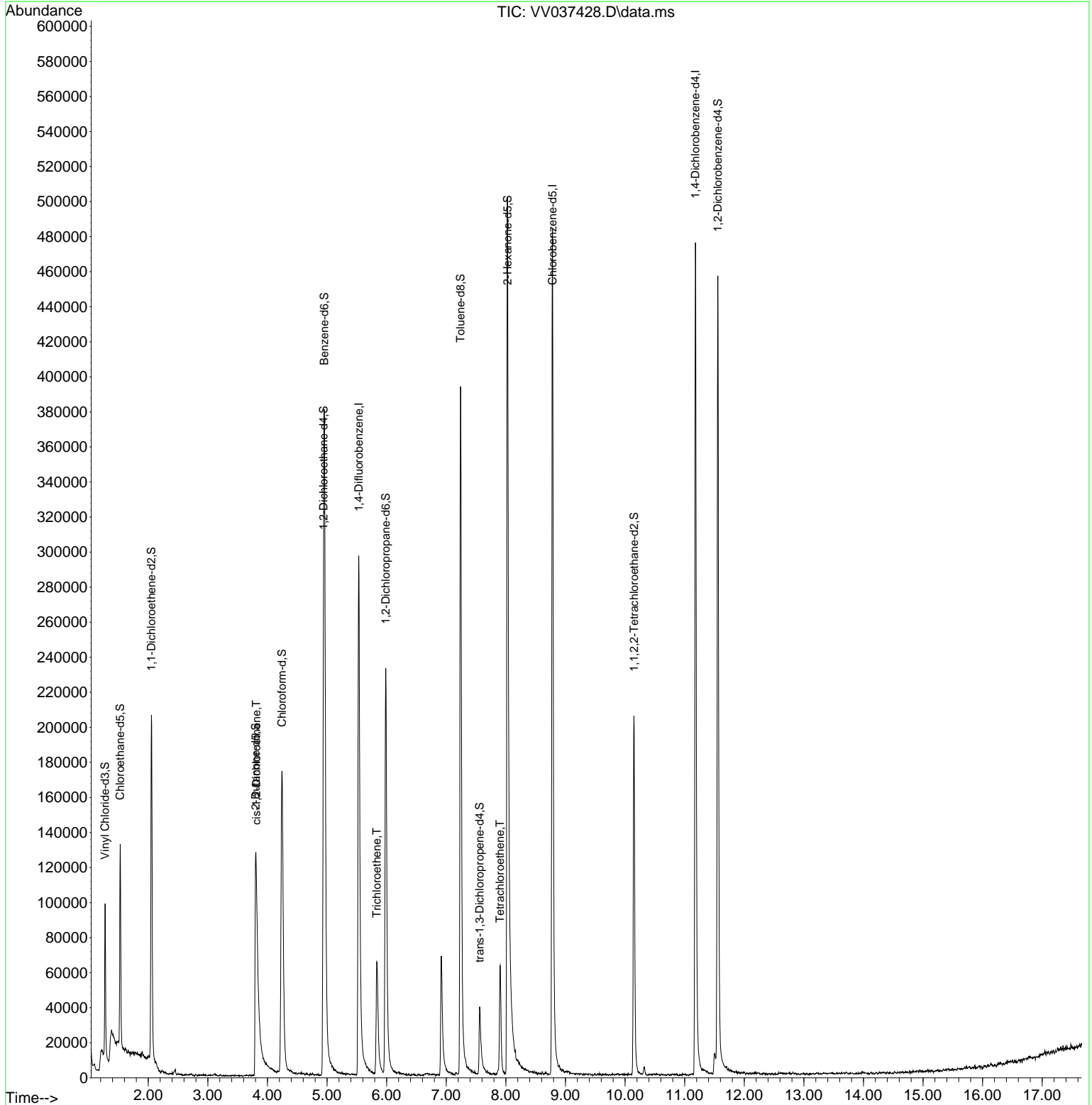
Compound	R.T.	QIon	Response	Conc	Units	Dev(Min)
Internal Standards						
1) 1,4-Difluorobenzene	5.532	114	280933	5.000	ug/L	0.00
28) Chlorobenzene-d5	8.783	117	292370	5.000	ug/L	0.00
58) 1,4-Dichlorobenzene-d4	11.181	152	129683	5.000	ug/L	0.00
System Monitoring Compounds						
4) Vinyl Chloride-d3	1.275	65	57860	3.511	ug/L	0.00
Spiked Amount	5.000	Range 40 - 130	Recovery	=	70.200%	
7) Chloroethane-d5	1.529	69	75809	4.412	ug/L	0.00
Spiked Amount	5.000	Range 65 - 130	Recovery	=	88.200%	
11) 1,1-Dichloroethene-d2	2.053	65	33348	3.918	ug/L	0.00
Spiked Amount	5.000	Range 60 - 125	Recovery	=	78.400%	
20) 2-Butanone-d5	3.802	46	257767	52.332	ug/L	-0.02
Spiked Amount	50.000	Range 40 - 130	Recovery	=	104.660%	
24) Chloroform-d	4.243	84	198035	4.949	ug/L	0.00
Spiked Amount	5.000	Range 70 - 125	Recovery	=	99.000%	
26) 1,2-Dichloroethane-d4	4.940	65	95249	5.084	ug/L	0.00
Spiked Amount	5.000	Range 70 - 130	Recovery	=	101.600%	
32) Benzene-d6	4.953	84	352104	4.492	ug/L	0.00
Spiked Amount	5.000	Range 70 - 125	Recovery	=	89.800%	
36) 1,2-Dichloropropane-d6	5.985	67	124433	5.104	ug/L	0.00
Spiked Amount	5.000	Range 60 - 140	Recovery	=	102.000%	
41) Toluene-d8	7.239	98	289664	4.101	ug/L	0.00
Spiked Amount	5.000	Range 70 - 130	Recovery	=	82.000%	
43) trans-1,3-Dichloroprop...	7.561	79	30547	3.809	ug/L	0.00
Spiked Amount	5.000	Range 55 - 130	Recovery	=	76.200%	
46) 2-Hexanone-d5	8.027	63	204463	52.188	ug/L	0.00
Spiked Amount	50.000	Range 45 - 130	Recovery	=	104.380%	
56) 1,1,2,2-Tetrachloroeth...	10.149	84	105359	5.303	ug/L	0.00
Spiked Amount	5.000	Range 65 - 120	Recovery	=	106.000%	
66) 1,2-Dichlorobenzene-d4	11.557	152	120082	5.208	ug/L	0.00
Spiked Amount	5.000	Range 80 - 120	Recovery	=	104.200%	
Target Compounds						
22) cis-1,2-Dichloroethene	3.812	96	4243	0.189	ug/L	96
34) Trichloroethene	5.834	95	27703	1.167	ug/L	92
47) Tetrachloroethene	7.902	164	15372	0.905	ug/L	93

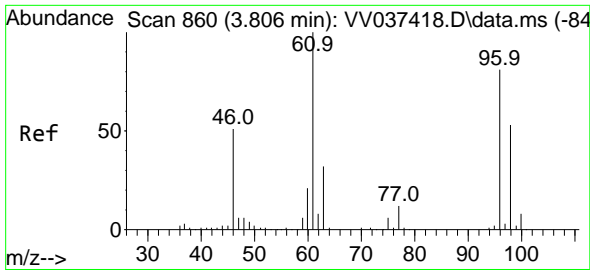
(#) = qualifier out of range (m) = manual integration (+) = signals summed

Data Path : Z:\voasrv\HPCHEM1\MSVOA_V\DATA\VV092024\
 Data File : VV037428.D
 Acq On : 20 Sep 2024 13:24
 Operator : SY/MD
 Sample : P3994-10
 Misc : 25mL/MSVOA_V/WATER
 ALS Vial : 1 Sample Multiplier: 1

Instrument :
 MSVOA_V
 ClientSampleId :
 C0B45

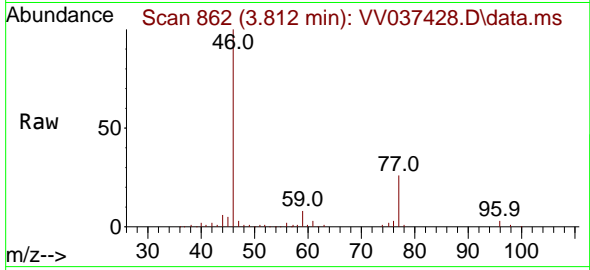
Quant Time: Sep 20 23:35:25 2024
 Quant Method : Z:\voasrv\HPCHEM1\MSVOA_V\Method\SFAMVTR091024WMA.M
 Quant Title : TRACE VOA SFAM1.0
 QLast Update : Fri Sep 20 23:32:27 2024
 Response via : Initial Calibration



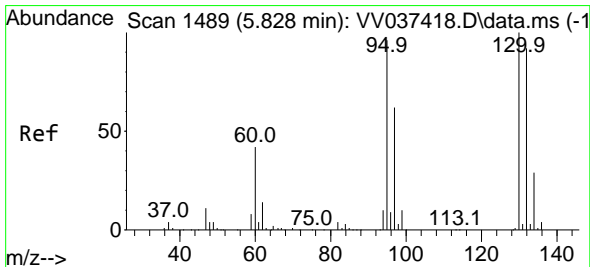
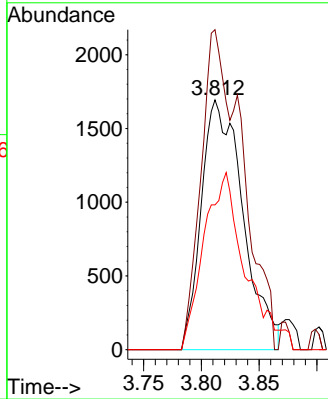
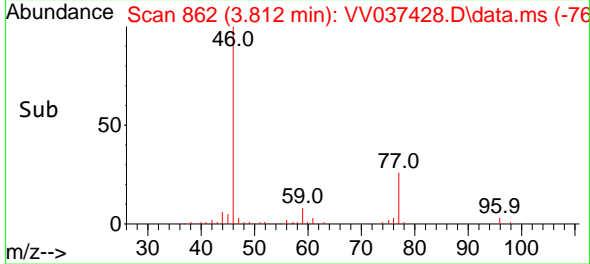


#22
 cis-1,2-Dichloroethene
 Concen: 0.189 ug/L
 RT: 3.812 min Scan# 80
 Delta R.T. 0.006 min
 Lab File: VV037428.D
 Acq: 20 Sep 2024 13:24

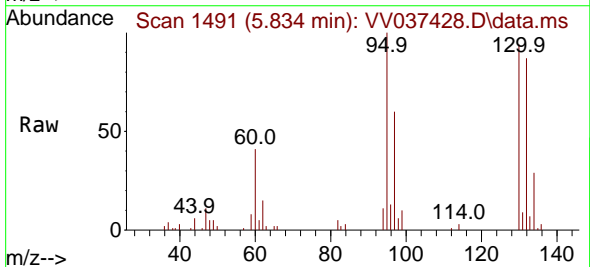
Instrument :
 MSVOA_V
 ClientSampleId :
 COB45



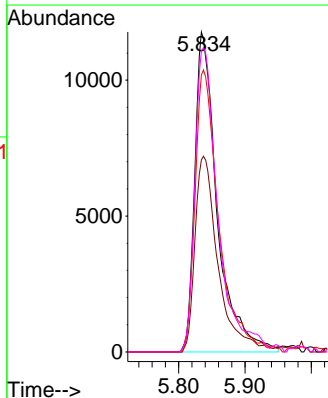
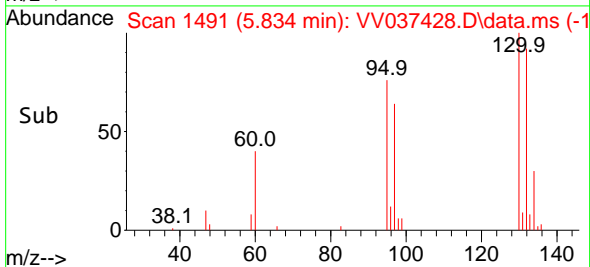
Tgt Ion: 96 Resp: 4243
 Ion Ratio Lower Upper
 96 100
 61 128.1 87.6 162.6
 98 58.0 44.9 83.5

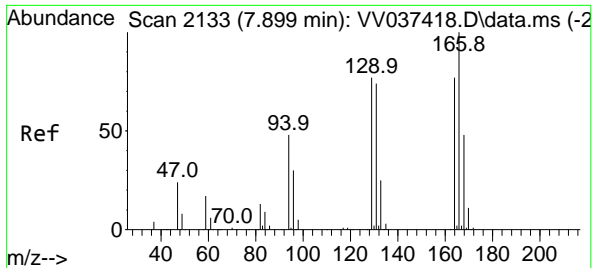


#34
 Trichloroethene
 Concen: 1.167 ug/L
 RT: 5.834 min Scan# 1491
 Delta R.T. 0.006 min
 Lab File: VV037428.D
 Acq: 20 Sep 2024 13:24



Tgt Ion: 95 Resp: 27703
 Ion Ratio Lower Upper
 95 100
 97 60.0 46.5 86.5
 132 86.6 65.5 121.7
 130 94.0 71.3 132.3





#47
 Tetrachloroethene
 Concen: 0.905 ug/L
 RT: 7.902 min Scan# 2134
 Delta R.T. 0.003 min
 Lab File: VV037428.D
 Acq: 20 Sep 2024 13:24

Instrument : MSVOA_V
 ClientSampleId : C0B45

Tgt Ion:164 Resp: 15372

Ion	Ratio	Lower	Upper
164	100		
129	95.4	69.2	128.4
131	91.5	66.6	123.8
166	113.8	88.8	165.0

