

Data Path : Z:\voasrv\HPCHEM1\MSVOA_V\DATA\VV092024\
 Data File : VV037429.D
 Acq On : 20 Sep 2024 13:48
 Operator : SY/MD
 Sample : P3990-01
 Misc : 25mL/MSVOA_V/WATER
 ALS Vial : 1 Sample Multiplier: 1

Instrument :
 MSVOA_V
 ClientSampleId :
 C0AR1

Integration Parameters: rteint.p

Integrator: RTE
 Smoothing : ON Filtering: 5
 Sampling : 1 Min Area: 3 % of largest Peak
 Start Thrs: 0.1 Max Peaks: 100
 Stop Thrs : 0 Peak Location: TOP

If leading or trailing edge < 100 prefer < Baseline drop else tangent >
 Peak separation: 5

Method : Z:\voasrv\HPCHEM1\MSVOA_V\Method\SFAMVTR091024WMA.M
 Title : TRACE VOA SFAM1.0

Signal : TIC: VV037429.D\data.ms

peak #	R.T. min	first scan	max scan	last scan	PK TY	peak height	corr. area	corr. % max.	% of total
1	1.211	41	53	65	rBV4	14157	46179	3.99%	0.532%
2	1.275	67	73	87	rVB	88293	101700	8.79%	1.173%
3	1.384	93	107	116	rBV3	29389	71442	6.18%	0.824%
4	1.529	145	152	164	rVB	112190	134068	11.59%	1.546%
5	2.056	306	316	333	rVB	191570	284732	24.62%	3.283%
6	3.802	848	859	896	rBV2	135260	472925	40.90%	5.453%
7	4.246	979	997	1026	rBV	171876	453964	39.26%	5.234%
8	4.953	1202	1217	1246	rBV2	373923	977373	84.52%	11.269%
9	5.532	1386	1397	1432	rBV	297395	668415	57.80%	7.707%
10	5.985	1526	1538	1565	rBV	229637	501212	43.34%	5.779%
11	6.918	1817	1828	1848	rBV2	66227	147842	12.78%	1.705%
12	7.239	1917	1928	1952	rBV	390158	734973	63.56%	8.474%
13	7.561	2019	2028	2049	rBV2	36676	81780	7.07%	0.943%
14	8.024	2163	2172	2215	rBV	504624	1156414	100.00%	13.333%
15	8.365	2267	2278	2290	rVB	8205	16257	1.41%	0.187%
16	8.783	2396	2408	2435	rBV	491465	864749	74.78%	9.970%
17	10.149	2822	2833	2850	rBV	201812	338999	29.31%	3.909%
18	11.181	3143	3154	3185	rBV	486467	815914	70.56%	9.407%
19	11.558	3245	3271	3297	rBV	450068	778292	67.30%	8.974%
20	14.975	4323	4334	4347	rVB2	15515	25928	2.24%	0.299%

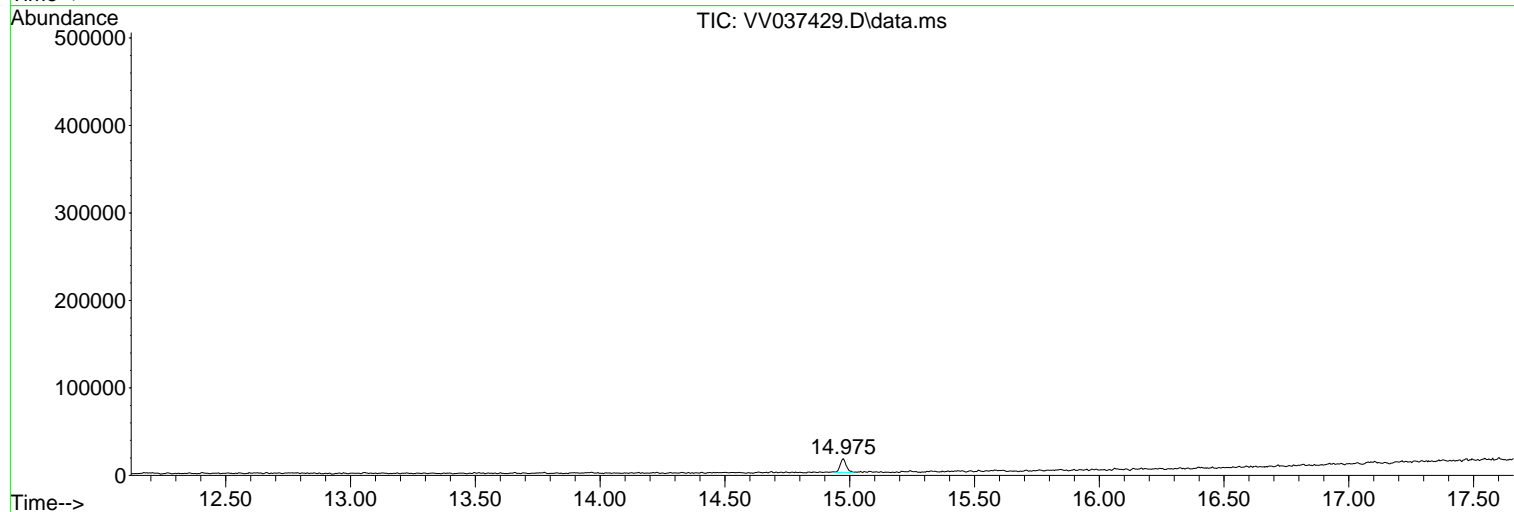
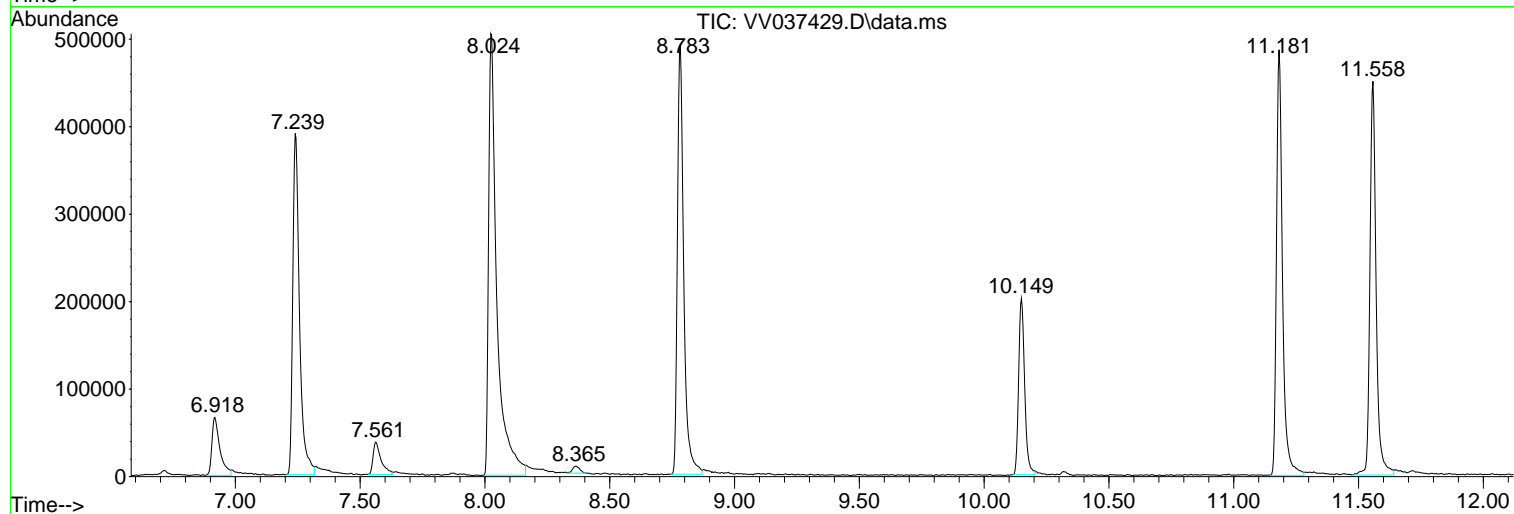
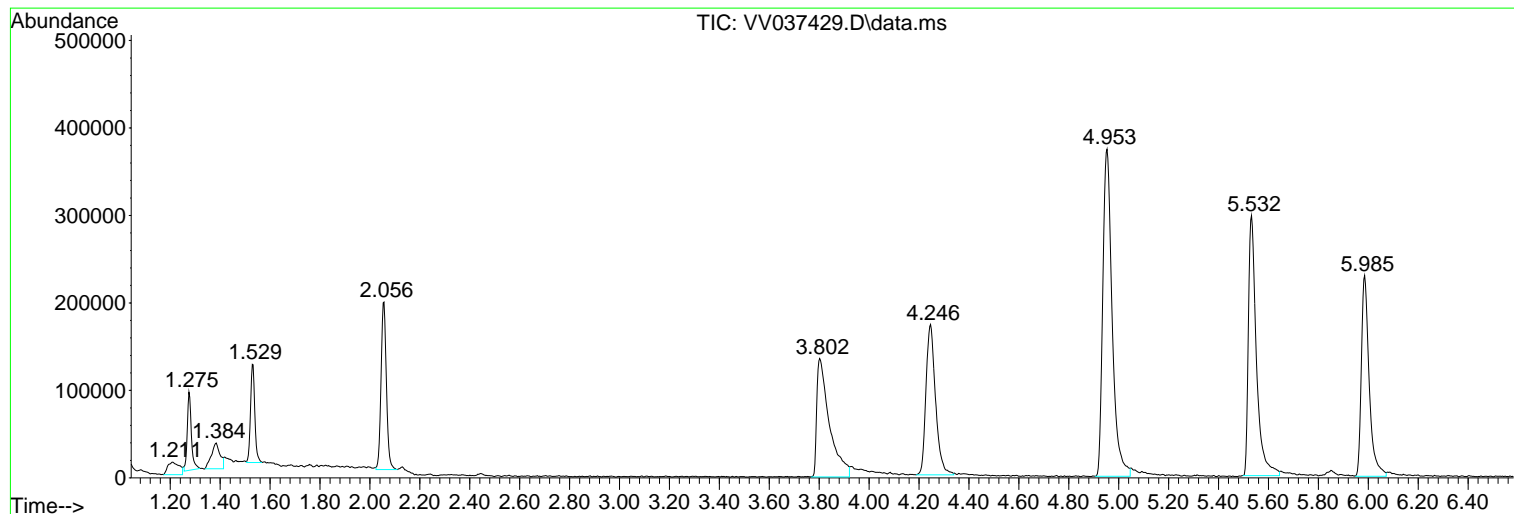
Sum of corrected areas: 8673158

Data Path : Z:\voasrv\HPCHEM1\MSVOA_V\DATA\VV092024\
Data File : VV037429.D
Acq On : 20 Sep 2024 13:48
Operator : SY/MD
Sample : P3990-01
Misc : 25mL/MSVOA_V/WATER
ALS Vial : 1 Sample Multiplier: 1

Instrument :
MSVOA_V
ClientSampleId :
C0AR1

Quant Method : Z:\voasrv\HPCHEM1\MSVOA_V\Method\SFAMVTR091024WMA.M
Quant Title : TRACE VOA SFAM1.0

TIC Library : C:\Database\NIST20.L
TIC Integration Parameters: LSCINT.P



Data Path : Z:\voasrv\HPCHEM1\MSVOA_V\DATA\VV092024\
 Data File : VV037429.D
 Acq On : 20 Sep 2024 13:48
 Operator : SY/MD
 Sample : P3990-01
 Misc : 25mL/MSVOA_V/WATER
 ALS Vial : 1 Sample Multiplier: 1

Instrument :
 MSVOA_V
 ClientSampleId :
 COAR1

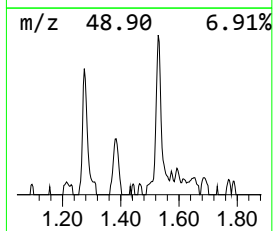
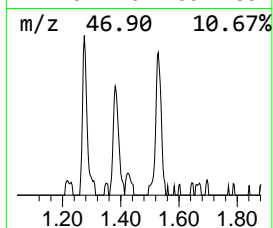
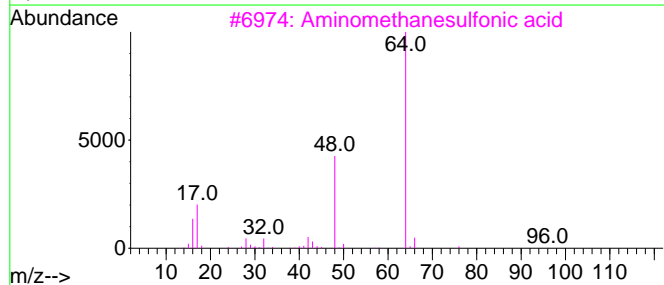
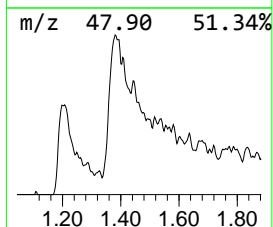
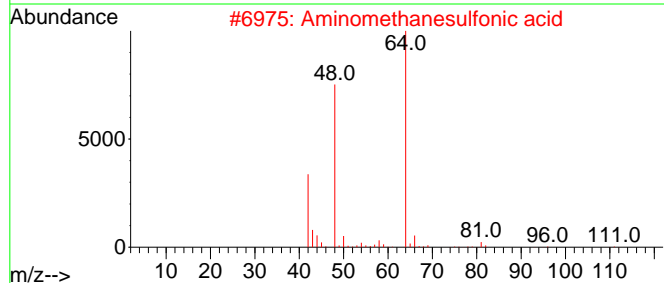
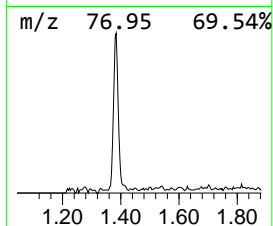
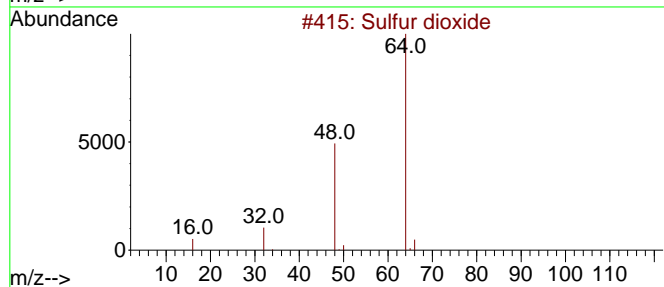
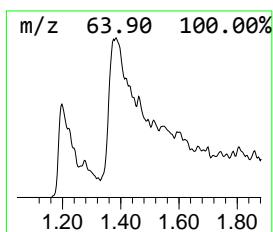
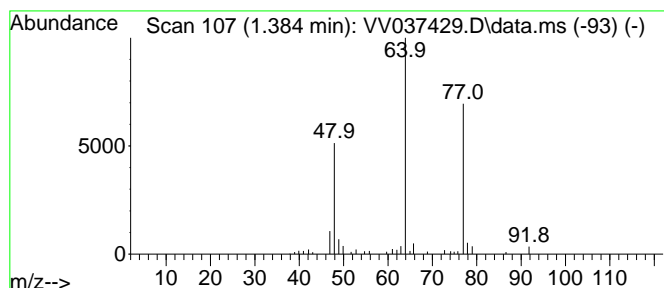
Quant Method : Z:\voasrv\HPCHEM1\MSVOA_V\Method\SFAMVTR091024WMA.M
 Quant Title : TRACE VOA SFAM1.0

TIC Library : C:\Database\NIST20.L
 TIC Integration Parameters: LSCINT.P

 Peak Number 1 Sulfur dioxide Concentration Rank 2

R.T.	EstConc	Area	Relative to ISTD	R.T.
1.384	0.53 ug/L	71442	1,4-Difluorobenzene	5.532

Hit#	of	5	Tentative ID	MW	MolForm	CAS#	Qual
1			Sulfur dioxide	64	O2S	007446-09-5	72
2			Aminomethanesulfonic acid	111	CH5NO3S	013881-91-9	50
3			Aminomethanesulfonic acid	111	CH5NO3S	013881-91-9	50
4			Ethyl Chloride	64	C2H5Cl	000075-00-3	9
5			Ethene, 1,1-difluoro-	64	C2H2F2	000075-38-7	9



Data Path : Z:\voasrv\HPCHEM1\MSVOA_V\DATA\VV092024\
Data File : VV037429.D
Acq On : 20 Sep 2024 13:48
Operator : SY/MD
Sample : P3990-01
Misc : 25mL/MSVOA_V/WATER
ALS Vial : 1 Sample Multiplier: 1

Instrument :
MSVOA_V
ClientSampleId :
C0AR1

Quant Method : Z:\voasrv\HPCHEM1\MSVOA_V\Method\SFAMVTR091024WMA.M
Quant Title : TRACE VOA SFAM1.0

TIC Library : C:\Database\NIST20.L
TIC Integration Parameters: LSCINT.P

TIC Top Hit name	RT	EstConc	Units	Response	--Internal Standard--			
					#	RT	Resp	Conc
Sulfur dioxide	1.384	0.5	ug/L	71442	1	5.532	668415	5.0