

Data Path : Z:\voasrv\HPCHEM1\MSVOA_V\DATA\VV092324\
 Data File : VV037492.D
 Acq On : 23 Sep 2024 18:47
 Operator : SY/MD
 Sample : P4024-05MEDL 20X
 Misc : 10.12G/5mL/100ul /5ml /MSVOA_V/MEOH
 ALS Vial : 1 Sample Multiplier: 1

Instrument :
 MSVOA_V
 ClientSampleId :

Quant Time: Sep 24 04:03:03 2024
 Quant Method : Z:\voasrv\HPCHEM1\MSVOA_V\Method\SFAMVLM082624WMA.M
 Quant Title : VOC Analysis
 QLast Update : Tue Sep 24 03:56:17 2024
 Response via : Initial Calibration

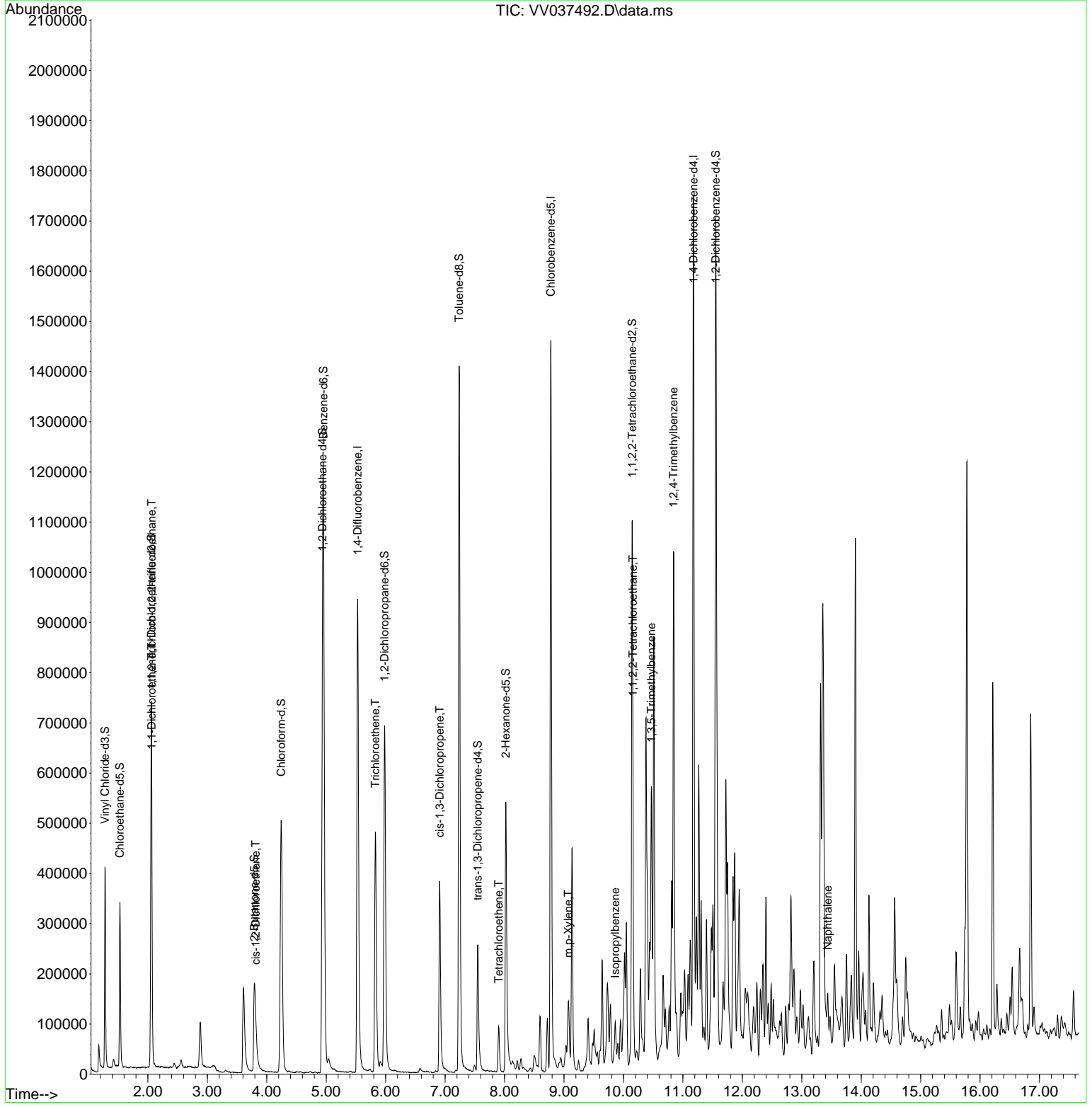
Compound	R.T.	QI on	Response	Conc	Units	Dev(Min)
Internal Standards						
1) 1,4-Difluorobenzene	5.529	114	841123	50.000	ug/L	0.00
28) Chlorobenzene-d5	8.780	117	796684	50.000	ug/L	0.00
58) 1,4-Dichlorobenzene-d4	11.178	152	401253	50.000	ug/L	0.00
System Monitoring Compounds						
4) Vinyl chloride-d3	1.278	65	270883	35.206	ug/L	0.00
Spike Amount	50.000	Range	60 - 135	Recovery	=	70.420%
7) Chloroethane-d5	1.529	69	228687	38.457	ug/L	0.00
Spike Amount	50.000	Range	70 - 130	Recovery	=	76.920%
11) 1,1-Dichloroethene-d2	2.060	65	118731	36.714	ug/L	0.00
Spike Amount	50.000	Range	60 - 125	Recovery	=	73.420%
21) 2-Butanone-d5	3.790	46	270653	90.835	ug/L	0.00
Spike Amount	100.000	Range	40 - 130	Recovery	=	90.840%
24) Chloroform-d	4.243	84	533251	44.282	ug/L	0.00
Spike Amount	50.000	Range	70 - 125	Recovery	=	88.560%
26) 1,2-Dichloroethane-d4	4.937	65	335624	44.257	ug/L	0.00
Spike Amount	50.000	Range	70 - 125	Recovery	=	88.520%
32) Benzene-d6	4.954	84	1080167	44.889	ug/L	0.00
Spike Amount	50.000	Range	70 - 125	Recovery	=	89.780%
36) 1,2-Dichloropropane-d6	5.982	67	344525	45.712	ug/L	0.00
Spike Amount	50.000	Range	70 - 120	Recovery	=	91.420%
41) Toluene-d8	7.236	98	949171	43.706	ug/L	0.00
Spike Amount	50.000	Range	80 - 120	Recovery	=	87.420%
43) trans-1,3-Dichloropropene	7.548	79	156620	44.917	ug/L	0.00
Spike Amount	50.000	Range	60 - 125	Recovery	=	89.840%
47) 2-Hexanone-d5	8.021	63	200366	97.410	ug/L	0.00
Spike Amount	100.000	Range	45 - 130	Recovery	=	97.410%
56) 1,1,2,2-Tetrachloroethane	10.146	84	412765	45.157	ug/L	0.00
Spike Amount	50.000	Range	65 - 120	Recovery	=	90.320%
66) 1,2-Dichlorobenzene-d4	11.555	152	372976	46.411	ug/L	0.00
Spike Amount	50.000	Range	80 - 120	Recovery	=	92.820%
Target Compounds						
10) 1,1,2-Trichloro-1,2,2-trichloroethane	2.063	101	4828	0.829	ug/L #	44
12) 1,1-Dichloroethene	2.066	96	9708	1.769	ug/L #	1
20) cis-1,2-Dichloroethene	3.812	96	17800	2.828	ug/L	97
34) Trichloroethene	5.828	95	181161	29.853	ug/L	98
39) cis-1,3-Dichloropropene	6.908	75	9095	0.935	ug/L #	56
46) Tetrachloroethene	7.902	164	19753	4.537	ug/L	96
53) m,p-Xylene	9.072	106	30230	3.017	ug/L	98
57) 1,1,2,2-Tetrachloroethane	10.159	83	11497	1.353	ug/L #	88
60) Isopropyl benzene	9.863	105	44216	1.700	ug/L	100
62) 1,3,5-Trimethyl benzene	10.471	105	270705	12.719	ug/L	99
63) 1,2,4-Trimethyl benzene	10.844	105	534229	25.153	ug/L	100
71) Naphthalene	13.439	128	70940	3.122	ug/L #	96

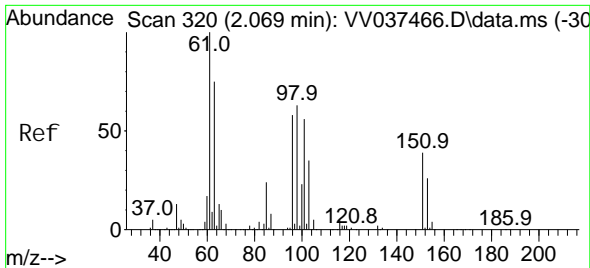
(#) = qualifier out of range (m) = manual integration (+) = signals summed

Data Path : Z:\voasrv\HPCHEM1\MSVOA_V\DATA\VV092324\
 Data File : VV037492.D
 Acq On : 23 Sep 2024 18:47
 Operator : SY/MD
 Sample : P4024-05MEDL 20X
 Misc : 10.12G/5mL/100ul /5ml /MSVOA_V/MEOH
 ALS Vial : 1 Sample Multiplier: 1

Instrument :
 MSVOA_V
ClientSampleId :

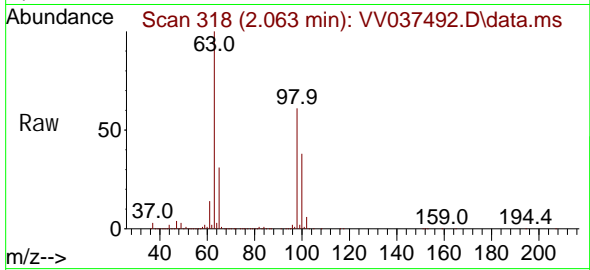
Quant Time: Sep 24 04:03:03 2024
 Quant Method : Z:\voasrv\HPCHEM1\MSVOA_V\Method\SFAMVLM082624WMA.M
 Quant Title : VOC Analysis
 QLast Update : Tue Sep 24 03:56:17 2024
 Response via : Initial Calibration



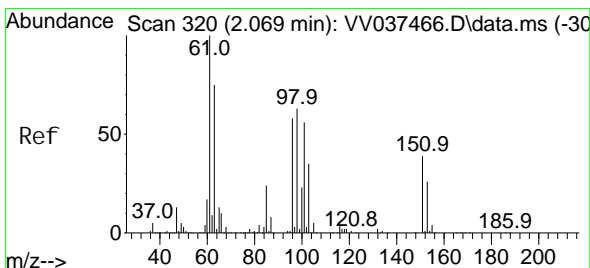
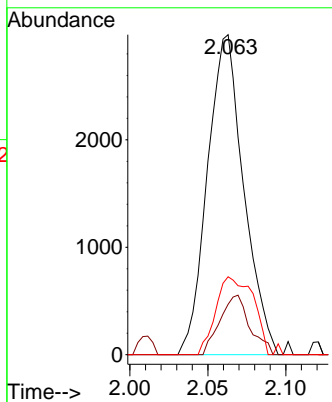
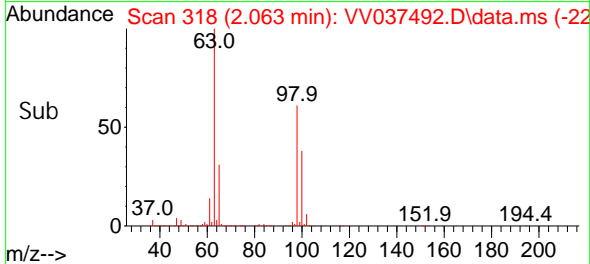


#10
 1,1,2-Tri chloro-1,2,2-tri fluoroethane
 Concen: 0.829 ug/L
 RT: 2.063 min Scan# 318
 Delta R.T. -0.006 min
 Lab File: VV037492.D
 Acq: 23 Sep 2024 18:47

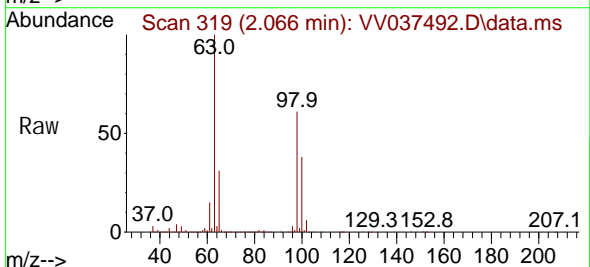
Instrument : MSVOA_V
 ClientSampleId :



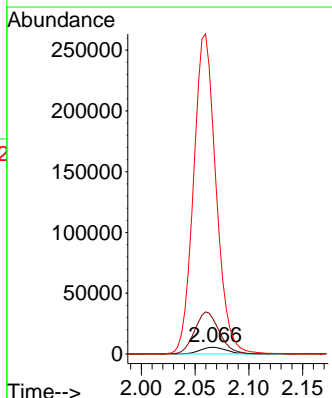
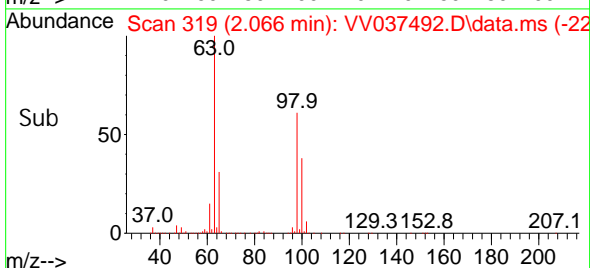
Tgt Ion: 101 Resp: 4828
 Ion Ratio Lower Upper
 101 100
 85 15.3 35.6 53.4#
 151 17.8 55.0 82.4#

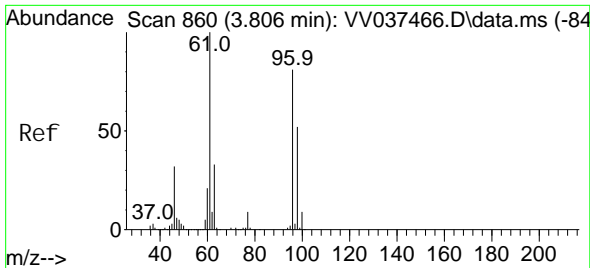


#12
 1,1-Di chloroethene
 Concen: 1.769 ug/L
 RT: 2.066 min Scan# 319
 Delta R.T. -0.003 min
 Lab File: VV037492.D
 Acq: 23 Sep 2024 18:47



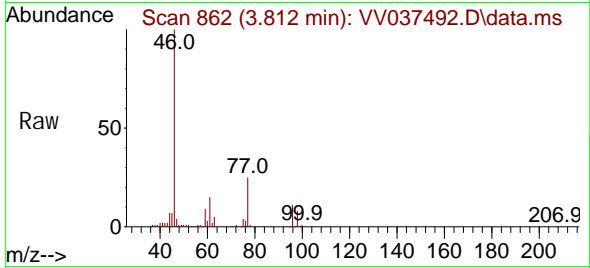
Tgt Ion: 96 Resp: 9708
 Ion Ratio Lower Upper
 96 100
 61 540.3 123.8 229.8#
 63 3492.5 96.5 179.1#





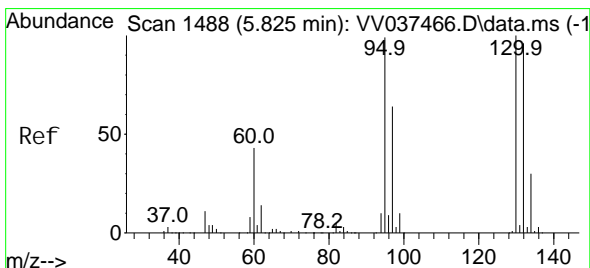
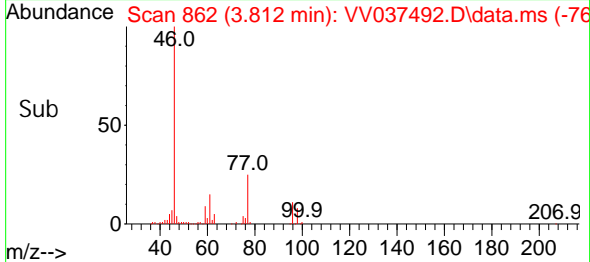
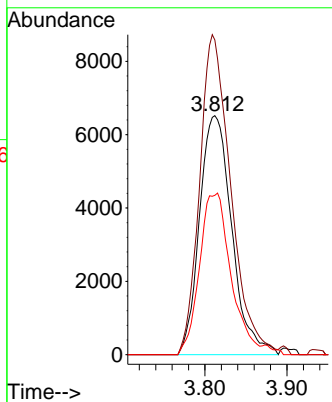
#20
 cis-1,2-Dichloroethene
 Concen: 2.828 ug/L
 RT: 3.812 min Scan# 860
 Delta R.T. 0.007 min
 Lab File: VV037492.D
 Acq: 23 Sep 2024 18:47

Instrument : MSVOA_V
 ClientSampleId :



Tgt Ion: 96 Resp: 17800

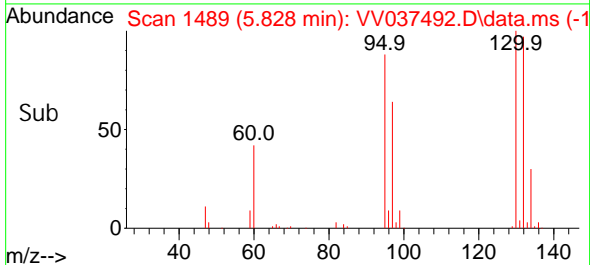
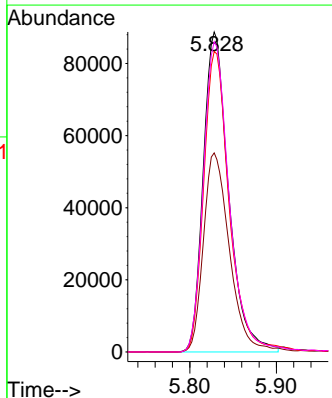
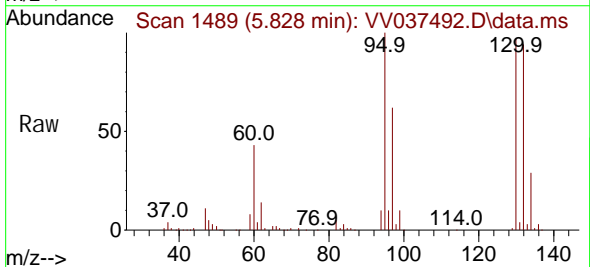
Ion	Ratio	Lower	Upper
96	100		
61	131.7	89.9	166.9
98	66.7	44.8	83.2

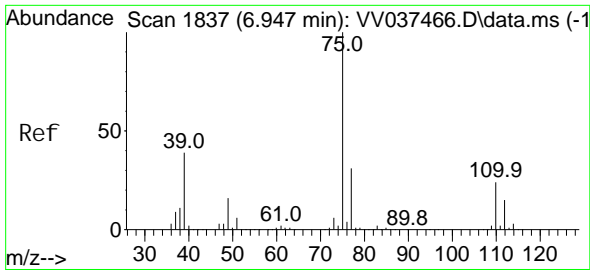


#34
 Trichloroethene
 Concen: 29.853 ug/L
 RT: 5.828 min Scan# 1489
 Delta R.T. 0.003 min
 Lab File: VV037492.D
 Acq: 23 Sep 2024 18:47

Tgt Ion: 95 Resp: 181161

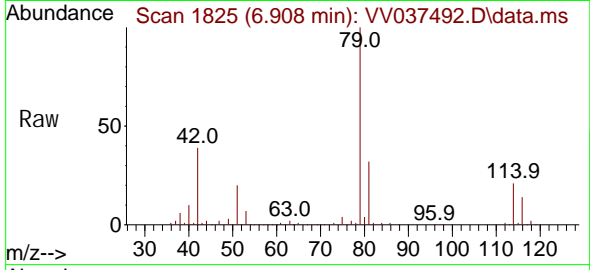
Ion	Ratio	Lower	Upper
95	100		
97	62.2	44.4	82.5
132	93.9	64.9	120.5
130	96.9	69.4	129.0



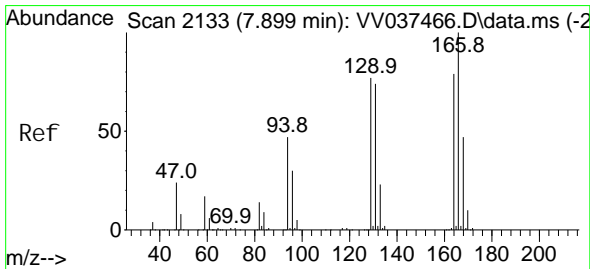
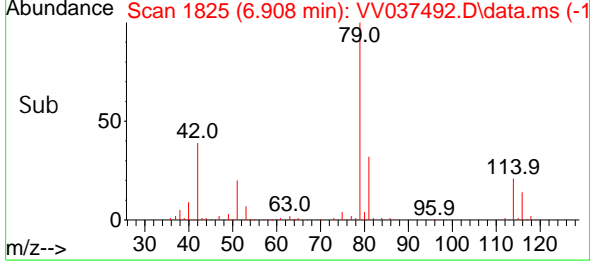
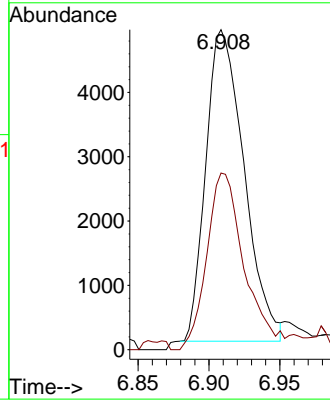


#39
 ci s-1, 3-Di chl oropropene
 Concen: 0.935 ug/L
 RT: 6.908 min Scan# 1837
 Delta R.T. -0.038 min
 Lab File: VV037492.D
 Acq: 23 Sep 2024 18:47

Instrument : MSVOA_V
 ClientSampleId :

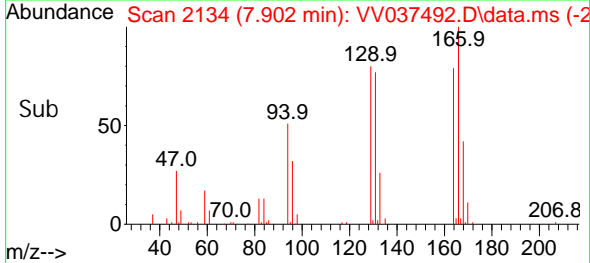
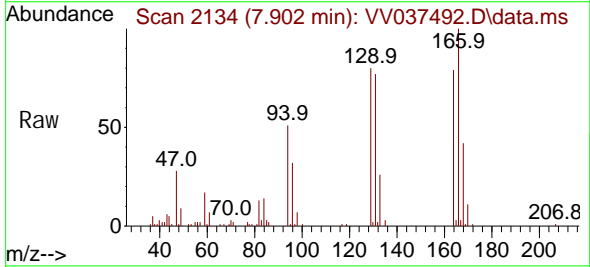
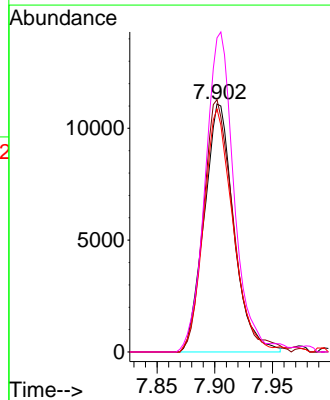


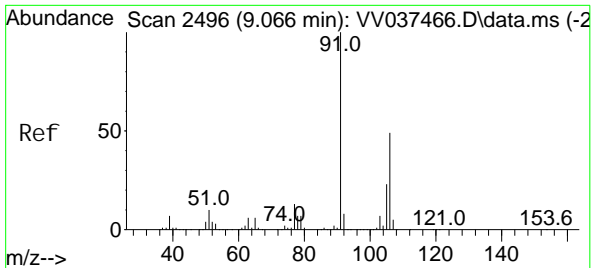
Tgt Ion: 75 Resp: 9095
 Ion Ratio Lower Upper
 75 100
 77 55.2 21.7 40.3#



#46
 Tetrachloroethene
 Concen: 4.537 ug/L
 RT: 7.902 min Scan# 2134
 Delta R.T. 0.003 min
 Lab File: VV037492.D
 Acq: 23 Sep 2024 18:47

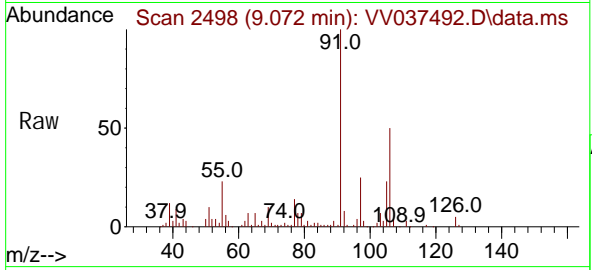
Tgt Ion: 164 Resp: 19753
 Ion Ratio Lower Upper
 164 100
 129 101.7 67.1 124.7
 131 97.9 67.0 124.4
 166 126.6 86.2 160.2



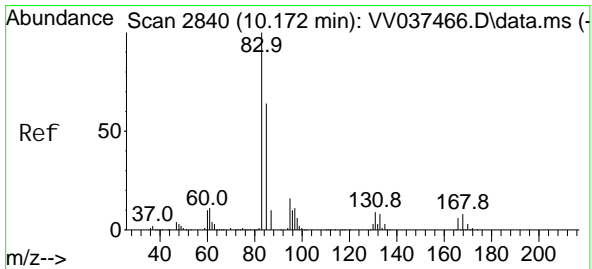
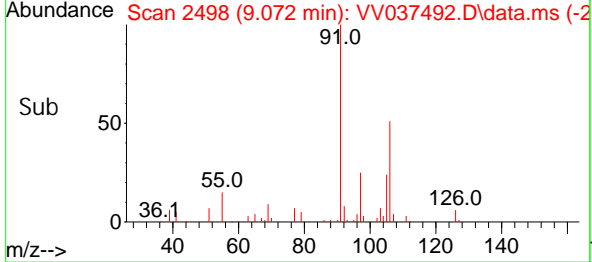
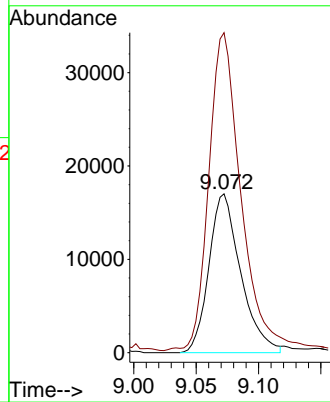


#53
 m, p-Xyl ene
 Concen: 3.017 ug/L
 RT: 9.072 min Scan# 2498
 Delta R.T. 0.007 min
 Lab File: VV037492.D
 Acq: 23 Sep 2024 18:47

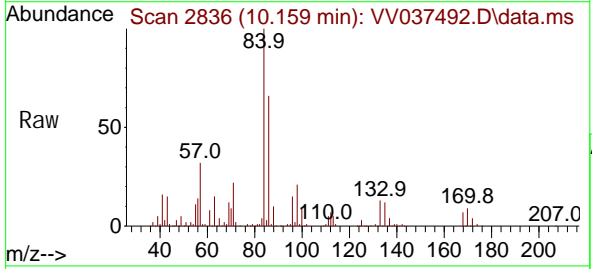
Instrument : MSVOA_V
 ClientSampleId :



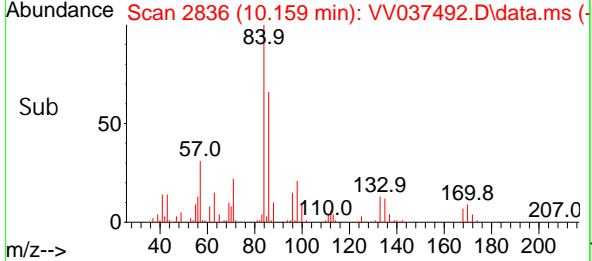
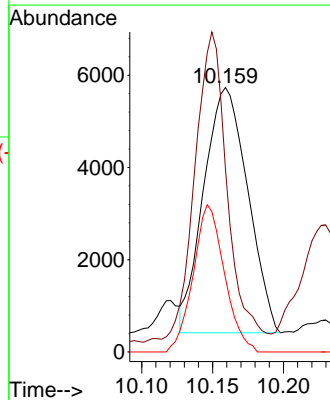
Tgt Ion: 106 Resp: 30230
 Ion Ratio Lower Upper
 106 100
 91 201.4 143.0 265.6

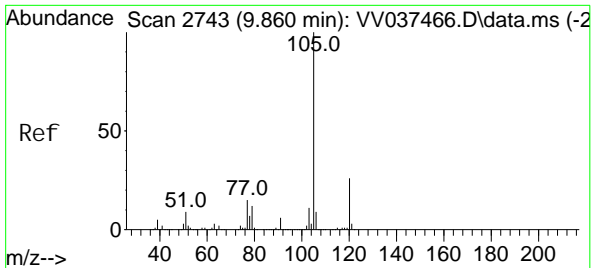


#57
 1, 1, 2, 2-Tetrachl oroethane
 Concen: 1.353 ug/L
 RT: 10.159 min Scan# 2836
 Delta R.T. -0.013 min
 Lab File: VV037492.D
 Acq: 23 Sep 2024 18:47



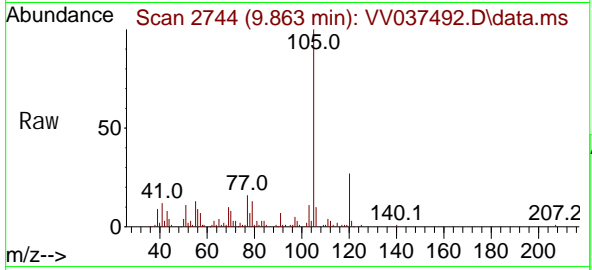
Tgt Ion: 83 Resp: 11497
 Ion Ratio Lower Upper
 83 100
 85 69.0 45.1 83.7
 131 27.8 7.4 11.0#



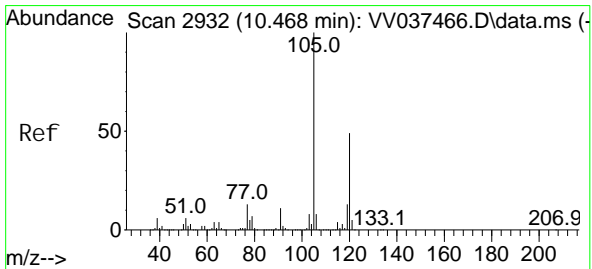
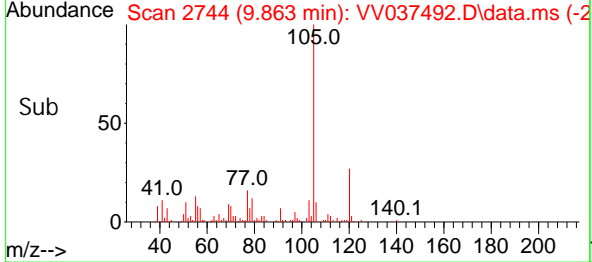
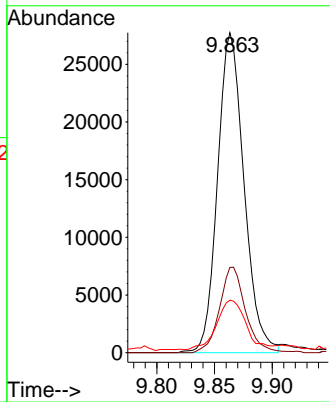


#60
 Isopropyl benzene
 Concen: 1.700 ug/L
 RT: 9.863 min Scan# 21
 Delta R.T. 0.003 min
 Lab File: VV037492.D
 Acq: 23 Sep 2024 18:47

Instrument : MSVOA_V
 ClientSampleId :

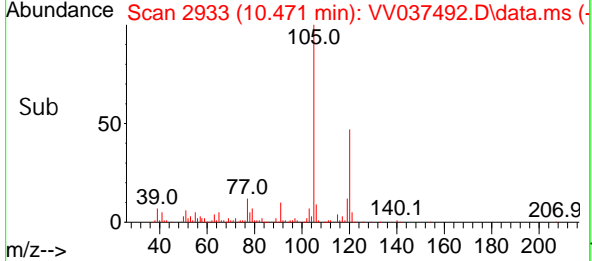
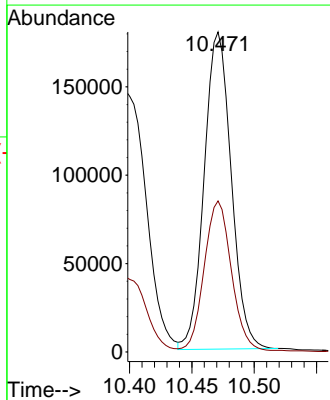
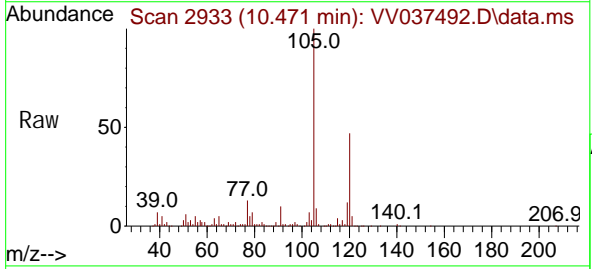


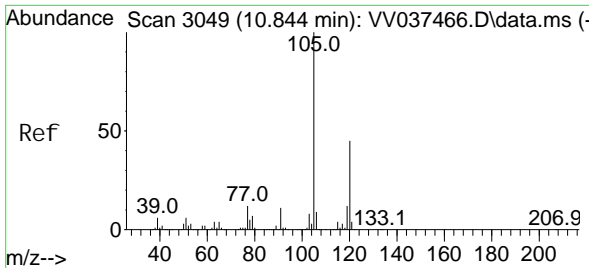
Tgt Ion	Resp	Lower	Upper
105	100		
120	26.1	20.9	31.3
77	16.1	12.6	19.0



#62
 1,3,5-Trimethyl benzene
 Concen: 12.719 ug/L
 RT: 10.471 min Scan# 2933
 Delta R.T. 0.003 min
 Lab File: VV037492.D
 Acq: 23 Sep 2024 18:47

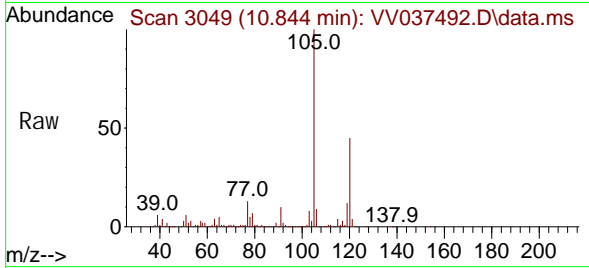
Tgt Ion	Resp	Lower	Upper
105	100		
120	47.2	38.3	57.5



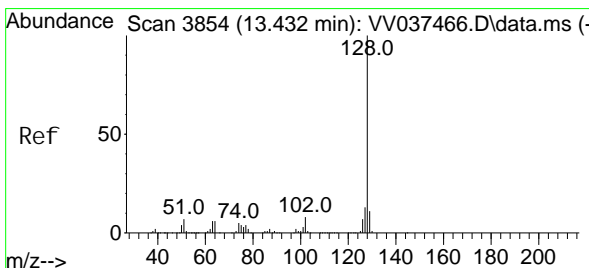
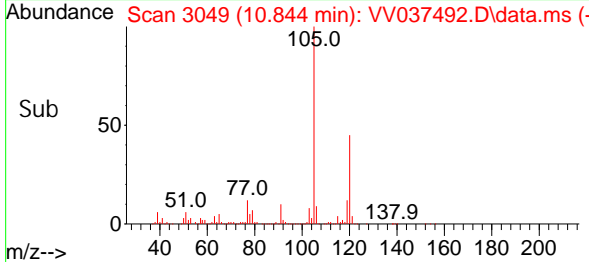
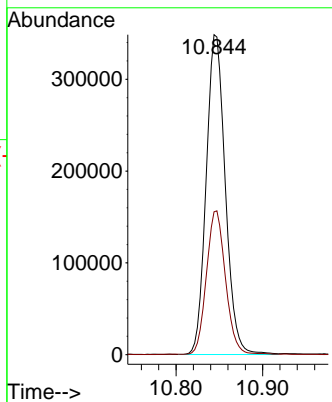


#63
 1, 2, 4-Tri methyl benzene
 Concen: 25.153 ug/L
 RT: 10.844 min Scan# 3049
 Delta R.T. 0.000 min
 Lab File: VV037492.D
 Acq: 23 Sep 2024 18:47

Instrument : MSVOA_V
 ClientSampleId :



Tgt Ion: 105 Resp: 534229
 Ion Ratio Lower Upper
 105 100
 120 44.6 35.8 53.6



#71
 Naphthalene
 Concen: 3.122 ug/L
 RT: 13.439 min Scan# 3856
 Delta R.T. 0.007 min
 Lab File: VV037492.D
 Acq: 23 Sep 2024 18:47

Tgt Ion: 128 Resp: 70940
 Ion Ratio Lower Upper
 128 100
 127 9.9 10.2 15.2#
 129 11.5 8.8 13.2

