

Data Path : Z:\VOASRV\HPCHEM1\MSVOA V\DATA\VV092519\
 Data File : VV012975.D
 Acq On : 25 Sep 2019 14:30
 Operator : SY/MD
 Sample : K4958-11
 Misc : 4.72G/10ML/MSVOA V/SOIL
 ALS Vial : 1 Sample Multiplier: 1

Instrument :
 MSVOA_V
 ClientSampleId :
 ESNZ3

Integration Parameters: LSCINT.P

Integrator: RTE
 Smoothing : OFF
 Sampling : 1
 Start Thrs: 0.2
 Stop Thrs : 0

Filtering: 5
 Min Area: 0 % of largest Peak
 Max Peaks: 100
 Peak Location: TOP

If leading or trailing edge < 100 prefer < Baseline drop else tangent >
 Peak separation: 5

Method : Z:\VOASRV\HPCHEM1\MSVOA_V\METHOD\SOM2VLM092319S.M
 Title : VOC Analysis

Signal : TIC

peak #	R.T. min	first scan	max scan	last scan	PK TY	peak height	corr. area	corr. % max.	% of total
1	1.316	65	70	92	rVB	252217	277079	12.43%	1.712%
2	1.582	147	153	168	rVB	263878	293838	13.18%	1.816%
3	2.129	314	323	334	rBV	430928	600301	26.92%	3.709%
4	2.534	440	449	464	rVB2	62156	99957	4.48%	0.618%
5	2.901	561	563	565	rBV2	481	214	0.01%	0.001%
6	2.952	575	579	581	rBV3	882	573	0.03%	0.004%
7	3.074	605	617	628	rBV3	11180	22638	1.02%	0.140%
8	3.280	680	681	683	rBV	531	234	0.01%	0.001%
9	3.348	699	702	705	rVB4	691	369	0.02%	0.002%
10	3.364	705	707	709	rBV2	732	328	0.01%	0.002%
11	3.377	709	711	719	rVB4	673	715	0.03%	0.004%
12	3.412	719	722	723	rBV2	500	252	0.01%	0.002%
13	3.422	723	725	729	rVB2	349	175	0.01%	0.001%
14	3.531	755	759	762	rVB2	663	539	0.02%	0.003%
15	3.553	762	766	769	rBV2	739	523	0.02%	0.003%
16	3.602	777	781	783	rBV2	449	311	0.01%	0.002%
17	3.611	783	784	785	rBV2	358	118	0.01%	0.001%
18	3.650	792	796	799	rBV3	572	506	0.02%	0.003%
19	3.666	799	801	804	rBV	540	346	0.02%	0.002%
20	3.724	816	819	820	rBV2	534	280	0.01%	0.002%
21	3.766	829	832	833	rBV2	301	157	0.01%	0.001%
22	3.795	839	841	844	rBV2	546	347	0.02%	0.002%
23	3.843	854	856	860	rVB3	605	277	0.01%	0.002%
24	3.862	860	862	864	rBV	234	164	0.01%	0.001%
25	3.971	877	896	932	rBV4	86702	407567	18.28%	2.518%
26	4.399	1014	1029	1057	rVB	378793	919658	41.25%	5.682%
27	4.891	1180	1182	1185	rBV2	573	311	0.01%	0.002%
28	4.907	1185	1187	1189	rBV3	473	264	0.01%	0.002%
29	4.920	1189	1191	1198	rVV6	713	536	0.02%	0.003%
30	5.010	1217	1219	1222	rVB3	646	286	0.01%	0.002%
31	5.026	1222	1224	1226	rVB2	436	172	0.01%	0.001%
32	5.093	1226	1245	1276	rBV2	897345	2229715	100.00%	13.777%
33	5.399	1338	1340	1341	rBV	747	256	0.01%	0.002%
34	5.592	1398	1400	1401	rBV	284	157	0.01%	0.001%

Data Path : Z:\VOASRV\HPCHEM1\MSVOA V\DATA\VV092519\
 Data File : VV012975.D
 Acq On : 25 Sep 2019 14:30
 Operator : SY/MD
 Sample : K4958-11
 Misc : 4.72G/10ML/MSVOA V/SOIL
 ALS Vial : 1 Sample Multiplier: 1

Instrument :
 MSVOA_V
 ClientSampleId :
 ESNZ3

Integration Parameters: LSCINT.P

Integrator: RTE
 Smoothing : OFF
 Sampling : 1
 Start Thrs: 0.2
 Stop Thrs : 0

Filtering: 5
 Min Area: 0 % of largest Peak
 Max Peaks: 100
 Peak Location: TOP

If leading or trailing edge < 100 prefer < Baseline drop else tangent >
 Peak separation: 5

Method : Z:\VOASRV\HPCHEM1\MSVOA_V\METHOD\SOM2VLM092319S.M
 Title : VOC Analysis

35	5.598	1401	1402	1404	rVB2	808	251	0.01%	0.002%
36	5.659	1407	1421	1456	rBV	874413	1748122	78.40%	10.801%
37	6.048	1539	1542	1548	rBV5	926	886	0.04%	0.005%
38	6.116	1548	1563	1584	rBV	530608	1080580	48.46%	6.677%
39	6.389	1645	1648	1652	rBV2	547	409	0.02%	0.003%
40	6.405	1652	1653	1657	rVB2	501	312	0.01%	0.002%
41	6.425	1657	1659	1661	rBV3	379	168	0.01%	0.001%
42	6.441	1661	1664	1665	rVB2	505	189	0.01%	0.001%
43	6.454	1665	1668	1670	rBV2	654	373	0.02%	0.002%
44	6.502	1679	1683	1686	rBV2	724	566	0.03%	0.003%
45	6.540	1693	1695	1697	rBV2	348	225	0.01%	0.001%
46	6.553	1697	1699	1703	rVV2	672	568	0.03%	0.004%
47	6.592	1708	1711	1714	rVB5	838	543	0.02%	0.003%
48	6.618	1714	1719	1723	rBV3	684	680	0.03%	0.004%
49	6.640	1723	1726	1728	rBV2	671	464	0.02%	0.003%
50	6.740	1755	1757	1759	rBV2	551	384	0.02%	0.002%
51	6.846	1787	1790	1793	rVB2	668	322	0.01%	0.002%
52	6.859	1793	1794	1797	rBV3	333	163	0.01%	0.001%
53	6.875	1797	1799	1801	rBV2	324	172	0.01%	0.001%
54	6.897	1803	1806	1810	rBV2	684	473	0.02%	0.003%
55	6.917	1810	1812	1816	rBV2	549	324	0.01%	0.002%
56	6.933	1816	1817	1820	rVB	777	321	0.01%	0.002%
57	6.958	1820	1825	1827	rBV3	708	451	0.02%	0.003%
58	6.981	1827	1832	1834	rBV2	578	634	0.03%	0.004%
59	7.026	1834	1846	1869	rBV	234583	419184	18.80%	2.590%
60	7.257	1913	1918	1920	rBV3	1032	854	0.04%	0.005%
61	7.357	1936	1949	1968	rBV	956677	1653768	74.17%	10.218%
62	7.550	2007	2009	2013	rBV4	1058	602	0.03%	0.004%
63	7.663	2033	2044	2063	rBV	154556	265938	11.93%	1.643%
64	8.138	2178	2192	2223	rBV2	178846	420691	18.87%	2.599%
65	8.576	2326	2328	2331	rBV4	1132	615	0.03%	0.004%
66	8.894	2414	2427	2460	rBV	1310297	2147216	96.30%	13.267%
67	9.299	2551	2553	2555	rBV3	612	356	0.02%	0.002%
68	9.386	2578	2580	2582	rBV2	749	309	0.01%	0.002%
69	9.408	2582	2587	2589	rVV3	875	697	0.03%	0.004%
70	9.421	2589	2591	2592	rVV	649	246	0.01%	0.002%
71	9.441	2595	2597	2599	rVV3	664	284	0.01%	0.002%

Data Path : Z:\VOASRV\HPCHEM1\MSVOA V\DATA\VV092519\
 Data File : VV012975.D
 Acq On : 25 Sep 2019 14:30
 Operator : SY/MD
 Sample : K4958-11
 Misc : 4.72G/10ML/MSVOA V/SOIL
 ALS Vial : 1 Sample Multiplier: 1

Instrument :
 MSVOA_V
 ClientSampleId :
 ESNZ3

Integration Parameters: LSCINT.P

Integrator: RTE
 Smoothing : OFF Filtering: 5
 Sampling : 1 Min Area: 0 % of largest Peak
 Start Thrs: 0.2 Max Peaks: 100
 Stop Thrs : 0 Peak Location: TOP

If leading or trailing edge < 100 prefer < Baseline drop else tangent >
 Peak separation: 5

Method : Z:\VOASRV\HPCHEM1\MSVOA_V\METHOD\SOM2VLM092319S.M
 Title : VOC Analysis

72	9.489	2609	2612	2616	rBV2	779	451	0.02%	0.003%
73	9.505	2616	2617	2619	rBV2	498	212	0.01%	0.001%
74	9.521	2619	2622	2625	rVV2	667	399	0.02%	0.002%
75	9.682	2668	2672	2674	rBV5	576	497	0.02%	0.003%
76	9.730	2685	2687	2689	rBV	558	312	0.01%	0.002%
77	9.842	2716	2722	2723	rBV3	1095	928	0.04%	0.006%
78	9.949	2745	2755	2769	rBV7	8924	15564	0.70%	0.096%
79	10.042	2781	2784	2787	rBV3	652	391	0.02%	0.002%
80	10.074	2792	2794	2797	rBV3	550	296	0.01%	0.002%
81	10.125	2803	2810	2814	rBV5	910	1009	0.05%	0.006%
82	10.148	2814	2817	2818	rBV	629	377	0.02%	0.002%
83	10.257	2839	2851	2875	rVB	396892	623482	27.96%	3.852%
84	10.357	2880	2882	2884	rVB3	797	294	0.01%	0.002%
85	10.383	2888	2890	2891	rBV3	638	238	0.01%	0.001%
86	10.421	2893	2902	2912	rVB2	22843	36676	1.64%	0.227%
87	10.469	2914	2917	2918	rBV	661	337	0.02%	0.002%
88	10.486	2919	2922	2923	rBV3	956	624	0.03%	0.004%
89	10.733	2997	2999	3002	rVB2	771	335	0.02%	0.002%
90	10.765	3007	3009	3011	rBV3	805	430	0.02%	0.003%
91	11.058	3098	3100	3103	rBV2	462	292	0.01%	0.002%
92	11.193	3133	3142	3148	rBV6	2805	4324	0.19%	0.027%
93	11.293	3160	3173	3192	rBV	1077226	1653944	74.18%	10.220%
94	11.547	3249	3252	3253	rBV4	924	646	0.03%	0.004%
95	11.669	3277	3290	3308	rBV	759674	1217317	54.60%	7.522%
96	12.158	3440	3442	3443	rBV2	667	218	0.01%	0.001%
97	12.293	3478	3484	3494	rVB2	7642	12259	0.55%	0.076%
98	12.685	3602	3606	3607	rBV2	1365	937	0.04%	0.006%
99	12.733	3617	3621	3626	rBV2	927	993	0.04%	0.006%
100	12.929	3674	3682	3684	rBV7	2367	2870	0.13%	0.018%

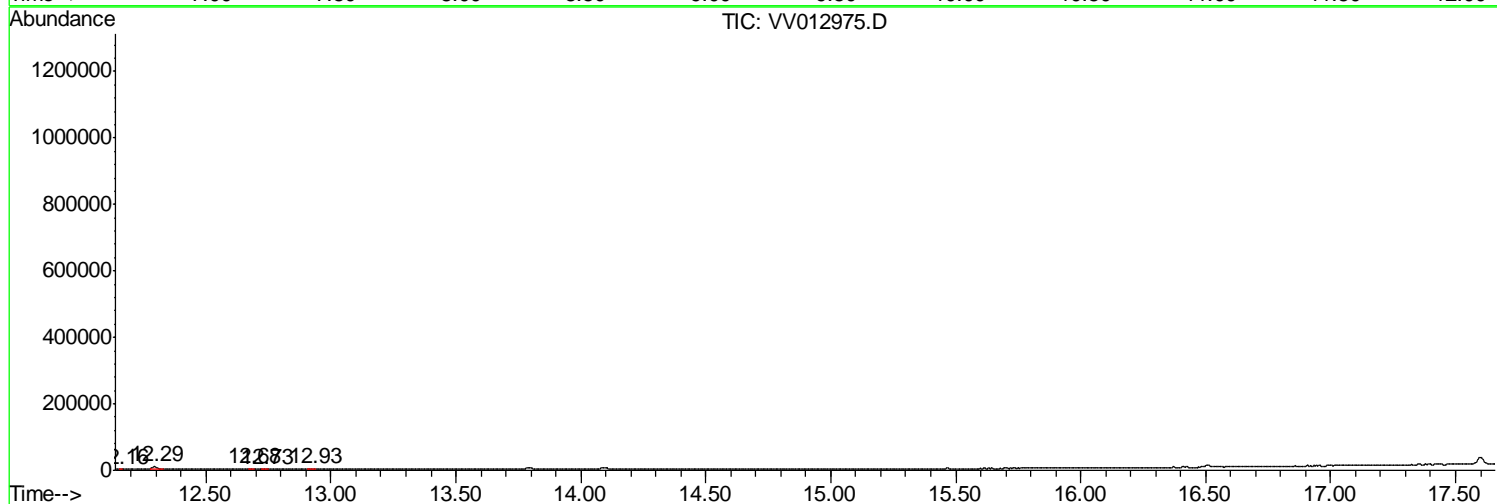
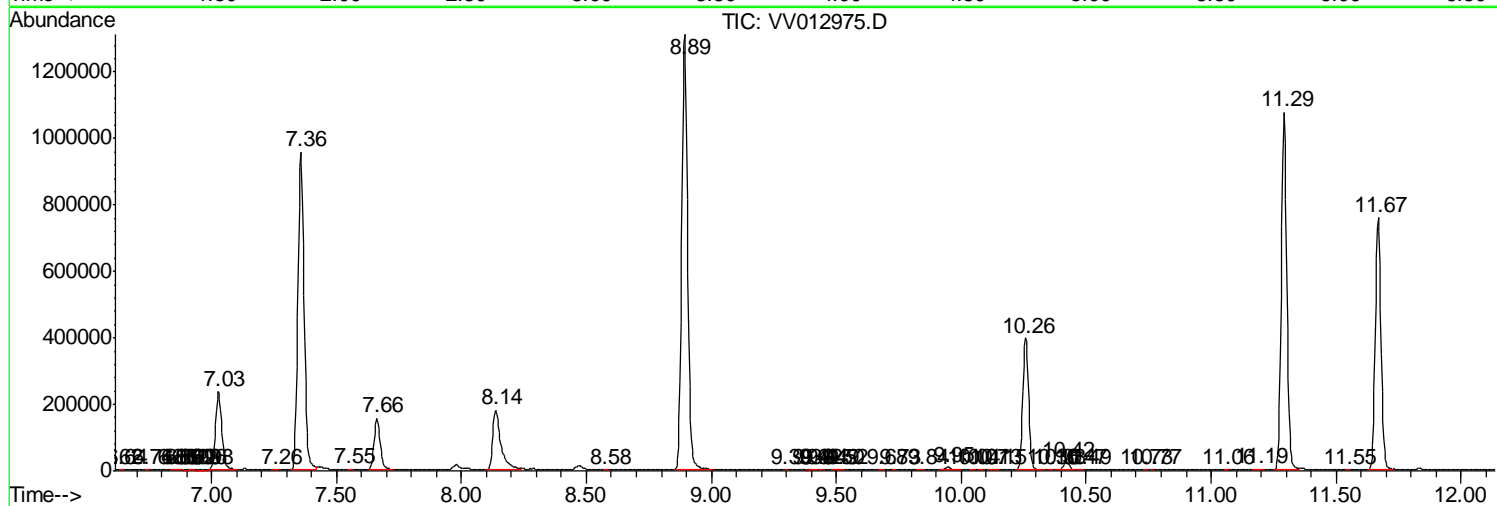
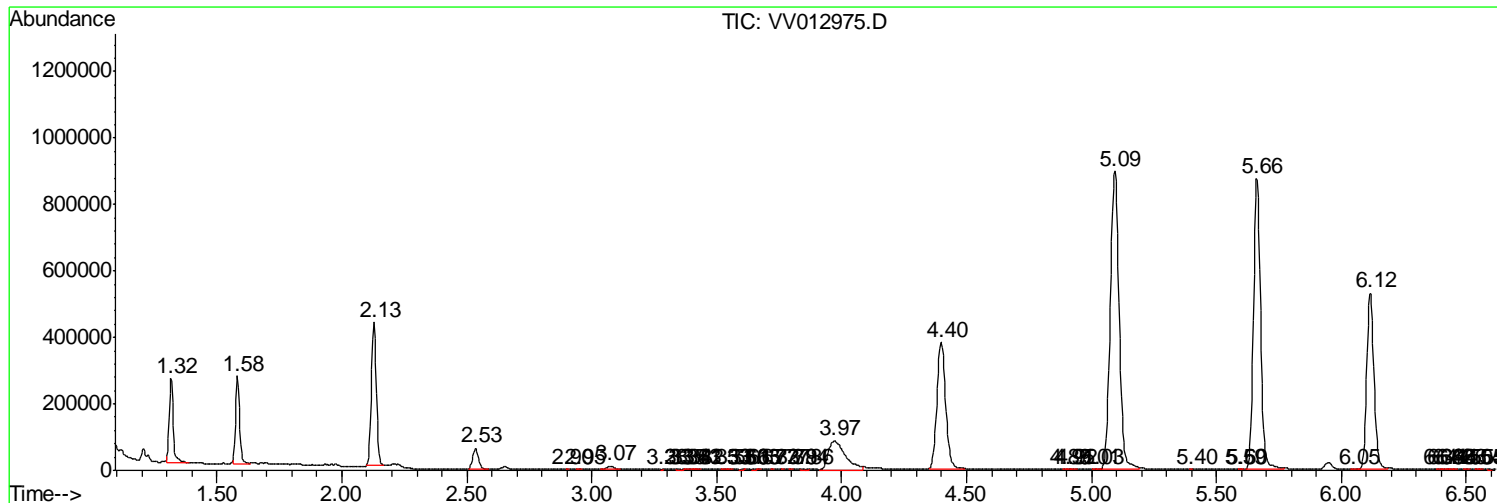
Sum of corrected areas: 16184155

Data Path : Z:\VOASRV\HPCHEM1\MSVOA V\DATA\VV092519\
 Data File : VV012975.D
 Acq On : 25 Sep 2019 14:30
 Operator : SY/MD
 Sample : K4958-11
 Misc : 4.72G/10ML/MSVOA V/SOIL
 ALS Vial : 1 Sample Multiplier: 1

Instrument :
 MSVOA_V
 ClientSampled :
 ESNZ3

Quant Method : Z:\VOASRV\HPCHEM1\MSVOA_V\METHOD\SOM2VLM092319S.M
 Quant Title : VOC Analysis

TIC Library : C:\DATABASE\NIST11.L
 TIC Integration Parameters: LSCINT.P



Data Path : Z:\VOASRV\HPCHEM1\MSVOA_V\DATA\VV092519\
Data File : VV012975.D
Acq On : 25 Sep 2019 14:30
Operator : SY/MD
Sample : K4958-11
Misc : 4.72G/10ML/MSVOA_V/SOIL
ALS Vial : 1 Sample Multiplier: 1

Instrument :
MSVOA_V
ClientSampleId :
ESNZ3

Quant Method : Z:\VOASRV\HPCHEM1\MSVOA_V\METHOD\SOM2VLM092319S.M
Quant Title : VOC Analysis

TIC Library : C:\DATABASE\NIST11.L
TIC Integration Parameters: LSCINT.P

No Library Search Compounds Detected

Data Path : Z:\VOASRV\HPCHEM1\MSVOA_V\DATA\VV092519\
Data File : VV012975.D
Acq On : 25 Sep 2019 14:30
Operator : SY/MD
Sample : K4958-11
Misc : 4.72G/10ML/MSVOA_V/SOIL
ALS Vial : 1 Sample Multiplier: 1

Instrument :
MSVOA_V
ClientSampleId :
ESNZ3

Quant Method : Z:\VOASRV\HPCHEM1\MSVOA_V\METHOD\SOM2VLM092319S.M
Quant Title : VOC Analysis

TIC Library : C:\DATABASE\NIST11.L
TIC Integration Parameters: LSCINT.P

TIC Top Hit name	RT	EstConc	Units	Response	--Internal Standard--			
					#	RT	Resp	Conc
