

Data Path : Z:\voasrv\HPCHEM1\MSVOA_V\Data\VV092622\
 Data File : VV028115.D
 Acq On : 26 Sep 2022 12:37
 Operator : SY/MD
 Sample : N4729-02DL 250X
 Misc : 25.0mL/MSVOA_V/WATER
 ALS Vial : 6 Sample Multiplier: 1

Instrument :
 MSVOA_V
 ClientSampleId :
 EXFJ6DL

Integration Parameters: rteint.p
 Integrator: RTE
 Smoothing : ON Filtering: 5
 Sampling : 1 Min Area: 3 % of largest Peak
 Start Thrs: 0.1 Max Peaks: 100
 Stop Thrs : 0 Peak Location: TOP

If leading or trailing edge < 100 prefer < Baseline drop else tangent >
 Peak separation: 5

Method : Z:\voasrv\HPCHEM1\MSVOA_V\Method\SFAMVTR092222WMA.M
 Title : TRACE VOA SFAM1.0

Signal : TIC: VV028115.D\data.ms

| peak # | R.T. min | first scan | max scan | last scan | PK TY | peak height | corr. area | corr. % max. | % of total |
|--------|----------|------------|----------|-----------|-------|-------------|------------|--------------|------------|
| 1 | 1.301 | 74 | 81 | 96 | rVB | 105051 | 112547 | 13.14% | 1.793% |
| 2 | 1.561 | 155 | 162 | 175 | rVB | 93468 | 107649 | 12.57% | 1.714% |
| 3 | 2.101 | 319 | 330 | 345 | rBV | 168214 | 247896 | 28.95% | 3.948% |
| 4 | 2.500 | 444 | 454 | 468 | rBV2 | 19347 | 32451 | 3.79% | 0.517% |
| 5 | 3.915 | 878 | 894 | 947 | rBV4 | 80973 | 440301 | 51.42% | 7.013% |
| 6 | 4.342 | 1011 | 1027 | 1052 | rBV2 | 117727 | 301963 | 35.27% | 4.809% |
| 7 | 5.043 | 1227 | 1245 | 1274 | rBV2 | 259815 | 653567 | 76.33% | 10.409% |
| 8 | 5.612 | 1411 | 1422 | 1448 | rBV | 182185 | 386642 | 45.16% | 6.158% |
| 9 | 5.908 | 1501 | 1514 | 1536 | rBV | 427028 | 856223 | 100.00% | 13.637% |
| 10 | 6.066 | 1551 | 1563 | 1589 | rBV | 155948 | 324719 | 37.92% | 5.172% |
| 11 | 6.985 | 1838 | 1849 | 1873 | rBV2 | 55247 | 110717 | 12.93% | 1.763% |
| 12 | 7.313 | 1937 | 1951 | 1975 | rBV | 259112 | 457565 | 53.44% | 7.288% |
| 13 | 7.622 | 2038 | 2047 | 2067 | rBV2 | 34031 | 66334 | 7.75% | 1.056% |
| 14 | 8.088 | 2181 | 2192 | 2225 | rBV | 299718 | 631404 | 73.74% | 10.056% |
| 15 | 8.416 | 2285 | 2294 | 2304 | rBV3 | 8512 | 14457 | 1.69% | 0.230% |
| 16 | 8.850 | 2417 | 2429 | 2448 | rBV | 289758 | 481505 | 56.24% | 7.669% |
| 17 | 10.214 | 2842 | 2853 | 2868 | rBV2 | 117584 | 188551 | 22.02% | 3.003% |
| 18 | 11.246 | 3161 | 3174 | 3196 | rBV | 279396 | 435297 | 50.84% | 6.933% |
| 19 | 11.622 | 3277 | 3291 | 3309 | rBV | 270818 | 428970 | 50.10% | 6.832% |

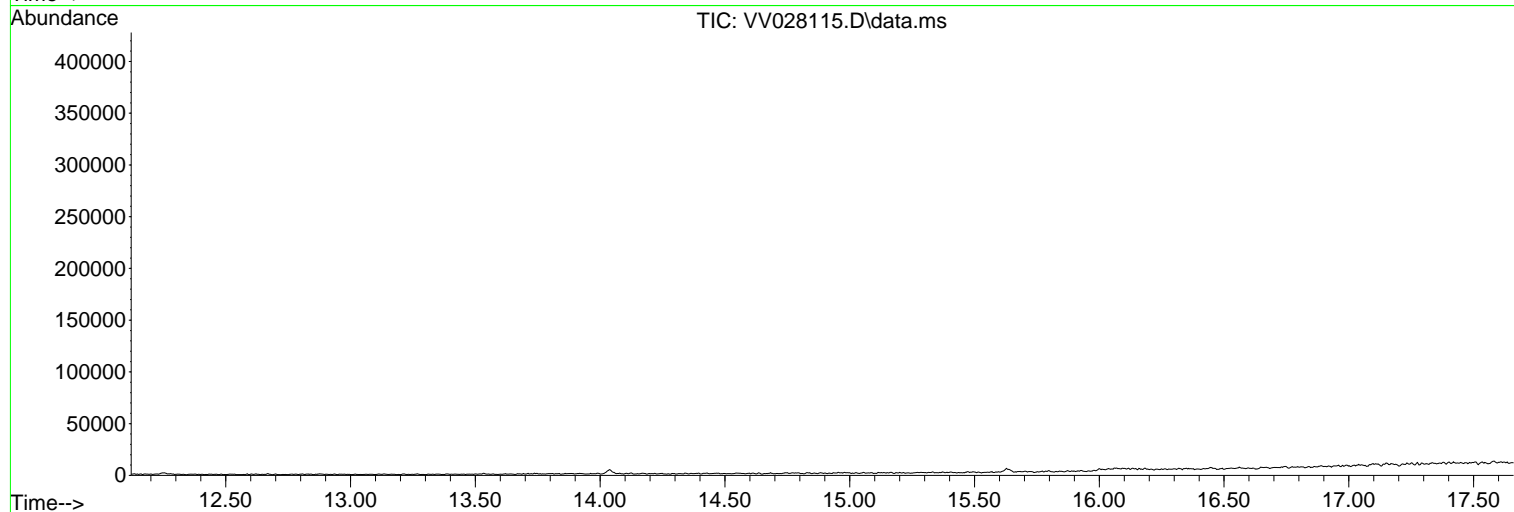
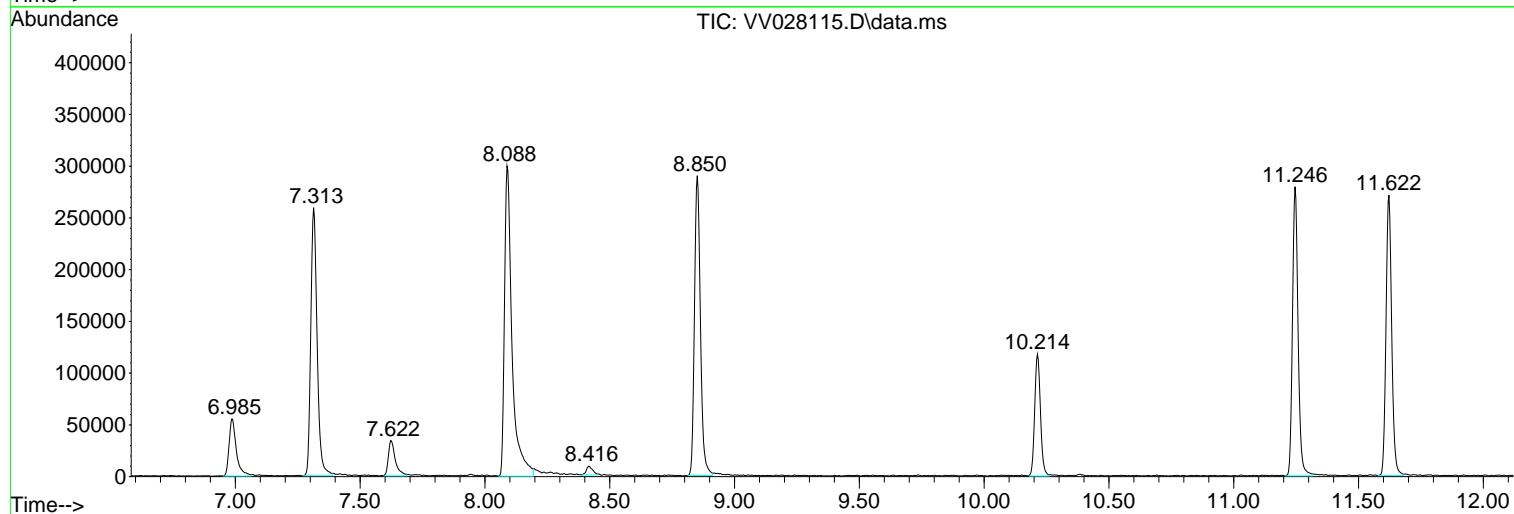
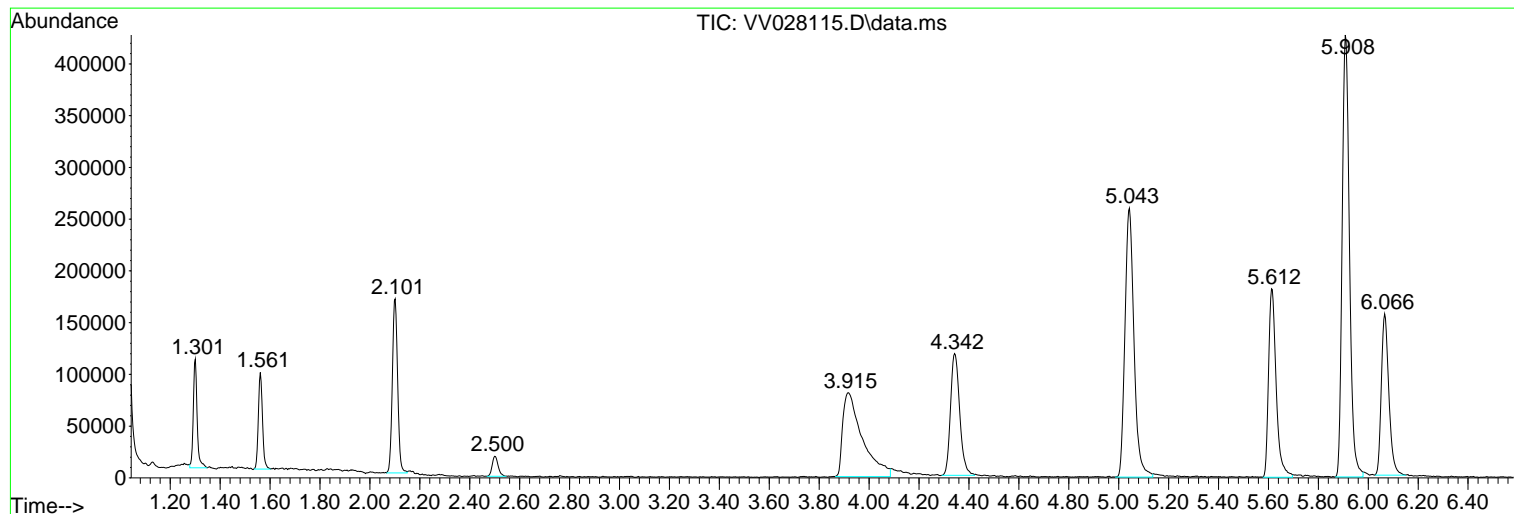
Sum of corrected areas: 6278758

Data Path : Z:\voasrv\HPCHEM1\MSVOA_V\Data\VV092622\
Data File : VV028115.D
Acq On : 26 Sep 2022 12:37
Operator : SY/MD
Sample : N4729-02DL 250X
Misc : 25.0mL/MSVOA_V/WATER
ALS Vial : 6 Sample Multiplier: 1

Instrument :
MSVOA_V
ClientSampleId :
EXFJ6DL

Quant Method : Z:\voasrv\HPCHEM1\MSVOA_V\Method\SFAMVTR092222WMA.M
Quant Title : TRACE VOA SFAM1.0

TIC Library : C:\Database\NIST20.L
TIC Integration Parameters: LSCINT.P



Library Search Compound Report

Data Path : Z:\voasrv\HPCHEM1\MSVOA_V\Data\VV092622\
Data File : VV028115.D
Acq On : 26 Sep 2022 12:37
Operator : SY/MD
Sample : N4729-02DL 250X
Misc : 25.0mL/MSVOA_V/WATER
ALS Vial : 6 Sample Multiplier: 1

Instrument :
MSVOA_V
ClientSampleId :
EXFJ6DL

Quant Method : Z:\voasrv\HPCHEM1\MSVOA_V\Method\SFAMVTR092222WMA.M
Quant Title : TRACE VOA SFAM1.0

TIC Library : C:\Database\NIST20.L
TIC Integration Parameters: LSCINT.P

No Library Search Compounds Detected

Data Path : Z:\voasrv\HPCHEM1\MSVOA_V\Data\VV092622\
Data File : VV028115.D
Acq On : 26 Sep 2022 12:37
Operator : SY/MD
Sample : N4729-02DL 250X
Misc : 25.0mL/MSVOA_V/WATER
ALS Vial : 6 Sample Multiplier: 1

Instrument :
MSVOA_V
ClientSampleId :
EXFJ6DL

Quant Method : Z:\voasrv\HPCHEM1\MSVOA_V\Method\SFAMVTR092222WMA.M
Quant Title : TRACE VOA SFAM1.0

TIC Library : C:\Database\NIST0.L
TIC Integration Parameters: LSCINT.P

| TIC Top Hit name | RT | EstConc | Units | Response | --Internal Standard-- | | |
|------------------|----|---------|-------|----------|-----------------------|----|-----------|
| | | | | | # | RT | Resp Conc |
