

Data Path : Z:\voasrv\HPCHEM1\MSVOA\_V\Data\VV092622\  
 Data File : VV028125.D  
 Acq On : 26 Sep 2022 18:45  
 Operator : SY/MD  
 Sample : N4820-09  
 Misc : 25.0mL/MSVOA\_V/WATER  
 ALS Vial : 16 Sample Multiplier: 1

Instrument :  
 MSVOA\_V  
 ClientSampleId :  
 CB8M8

Integration Parameters: rteint.p  
 Integrator: RTE  
 Smoothing : ON Filtering: 5  
 Sampling : 1 Min Area: 3 % of largest Peak  
 Start Thrs: 0.1 Max Peaks: 100  
 Stop Thrs : 0 Peak Location: TOP

If leading or trailing edge < 100 prefer < Baseline drop else tangent >  
 Peak separation: 5

Method : Z:\voasrv\HPCHEM1\MSVOA\_V\Method\SFAMVTR092222WMA.M  
 Title : TRACE VOA SFAM1.0

Signal : TIC: VV028125.D\data.ms

peak #	R.T. min	first scan	max scan	last scan	PK TY	peak height	corr. area	corr. % max.	% of total
1	1.130	23	28	41	rVB	57585	74458	1.90%	0.751%
2	1.298	73	80	94	rVB	117087	124587	3.19%	1.256%
3	1.407	108	114	124	rVB	53799	59747	1.53%	0.602%
4	1.558	154	161	172	rVB	89743	101449	2.59%	1.023%
5	1.947	274	282	296	rVB2	64396	92685	2.37%	0.934%
6	2.095	318	328	341	rBV	167854	240485	6.15%	2.424%
7	3.912	879	893	934	rBV3	50598	247744	6.33%	2.498%
8	4.342	1009	1027	1060	rBV2	113786	288764	7.38%	2.911%
9	5.040	1229	1244	1258	rBV2	252027	618087	15.80%	6.231%
10	5.613	1408	1422	1448	rBV2	191096	399367	10.21%	4.026%
11	6.066	1548	1563	1589	rBV2	146948	313089	8.00%	3.156%
12	6.982	1837	1848	1867	rBV	62522	122001	3.12%	1.230%
13	7.310	1938	1950	1968	rBV	247765	446481	11.41%	4.501%
14	7.622	2038	2047	2068	rBV2	37575	69262	1.77%	0.698%
15	8.088	2179	2192	2222	rBV	295041	613081	15.67%	6.181%
16	8.876	2417	2437	2468	rBV2	2107185	3911509	100.00%	39.433%
17	10.214	2843	2853	2870	rVB	117639	190282	4.86%	1.918%
18	10.860	3043	3054	3063	rBV	29170	46338	1.18%	0.467%
19	11.053	3097	3114	3121	rBV2	54749	93390	2.39%	0.941%
20	11.246	3163	3174	3178	rBV	373453	568688	14.54%	5.733%
21	11.525	3252	3261	3276	rBV2	104577	204233	5.22%	2.059%
22	11.622	3280	3291	3310	rVB2	319055	592327	15.14%	5.971%
23	12.297	3492	3501	3520	rBV5	34180	84656	2.16%	0.853%
24	12.660	3603	3614	3627	rBV4	64457	155504	3.98%	1.568%
25	13.699	3922	3937	3948	rBV8	26584	64832	1.66%	0.654%
26	16.178	4699	4708	4720	rBV4	32189	50549	1.29%	0.510%
27	16.307	4738	4748	4758	rVB	94634	145857	3.73%	1.470%

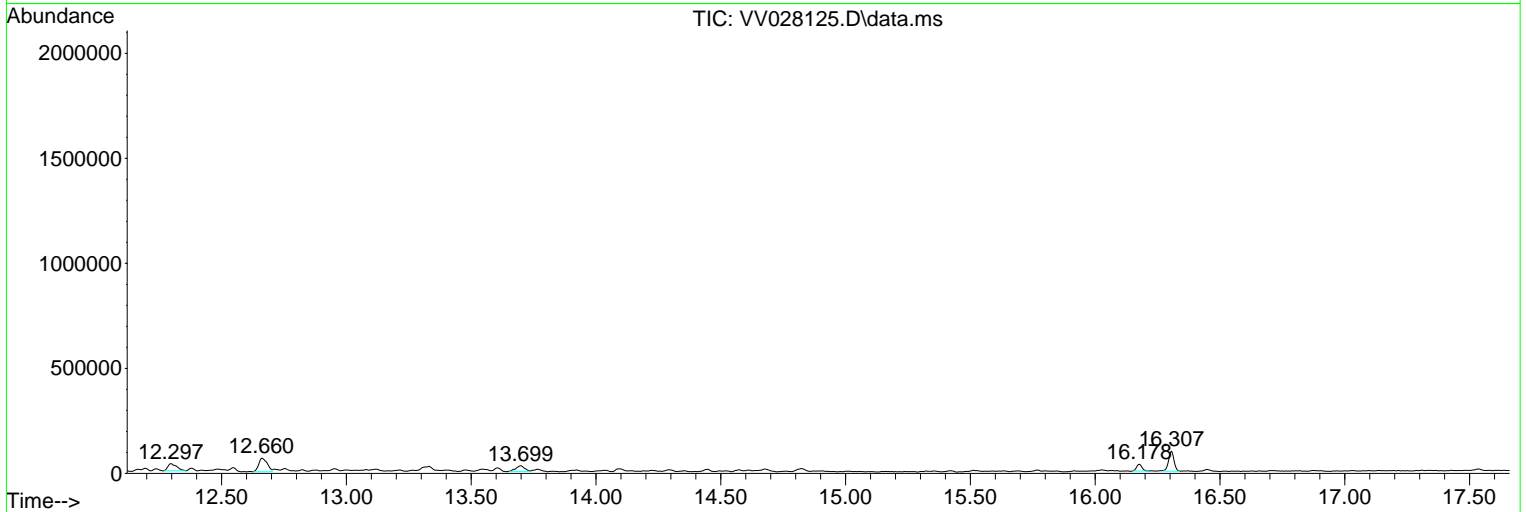
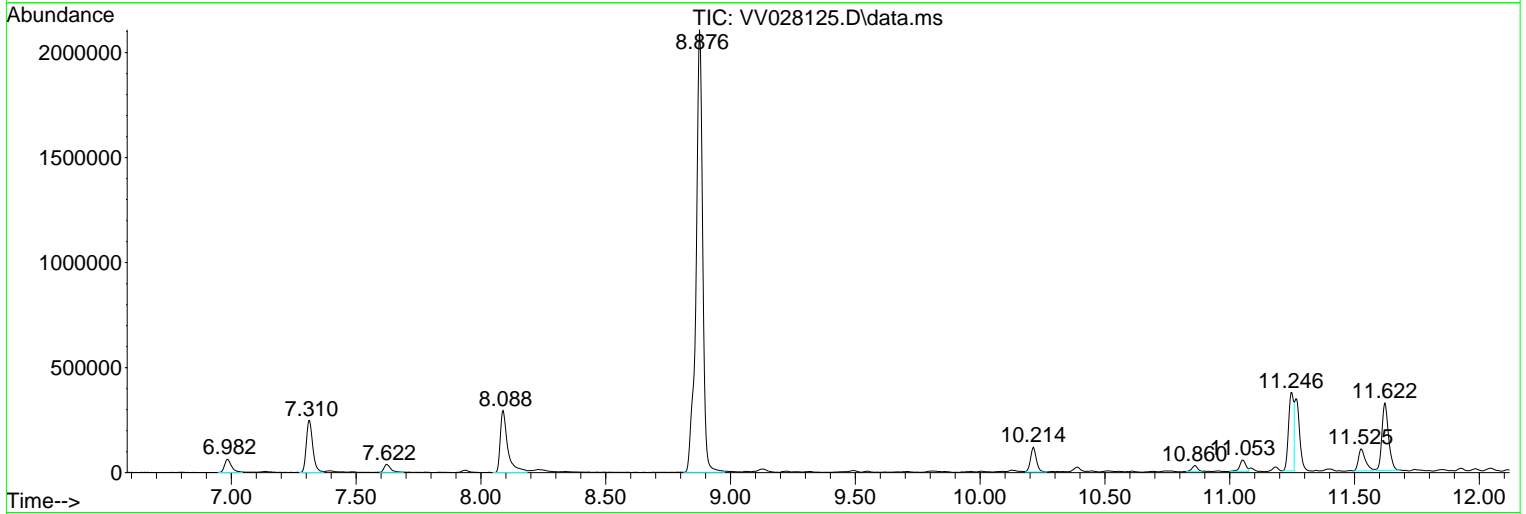
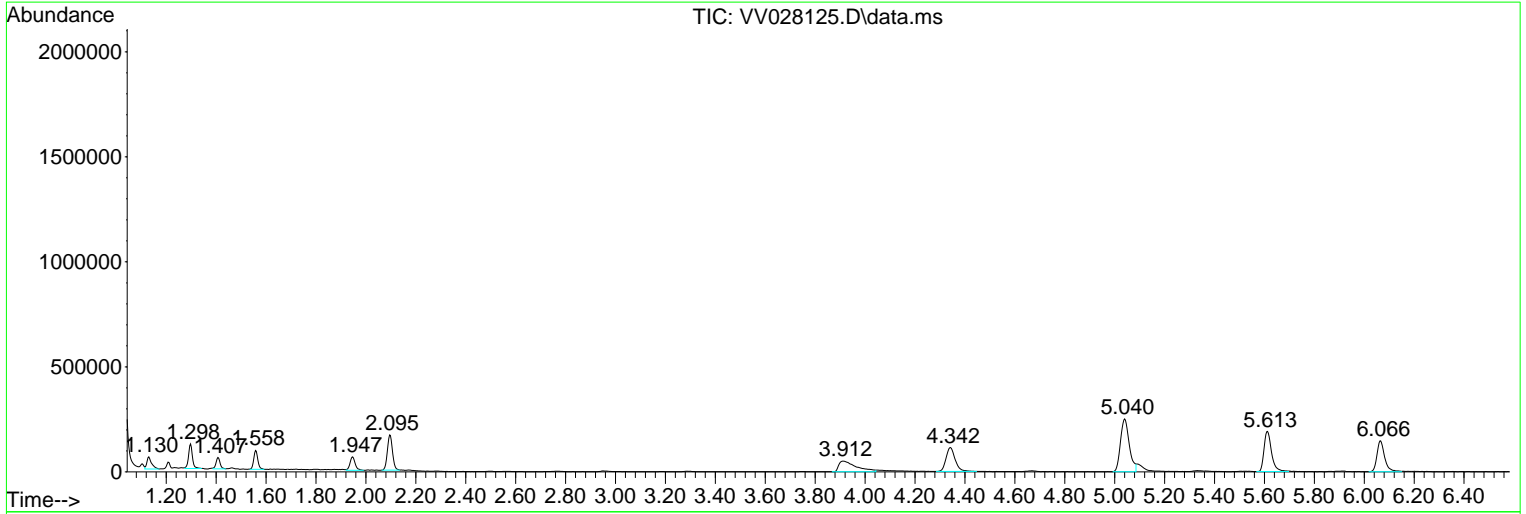
Sum of corrected areas: 9919452

Data Path : Z:\voasrv\HPCHEM1\MSVOA\_V\Data\VV092622\  
 Data File : VV028125.D  
 Acq On : 26 Sep 2022 18:45  
 Operator : SY/MD  
 Sample : N4820-09  
 Misc : 25.0mL/MSVOA\_V/WATER  
 ALS Vial : 16 Sample Multiplier: 1

Instrument :  
 MSVOA\_V  
 ClientSampleId :  
 CB8M8

Quant Method : Z:\voasrv\HPCHEM1\MSVOA\_V\Method\SFAMVTR092222WMA.M  
 Quant Title : TRACE VOA SFAM1.0

TIC Library : C:\Database\NIST20.L  
 TIC Integration Parameters: LSCINT.P



Data Path : Z:\voasrv\HPCHEM1\MSVOA\_V\Data\VV092622\  
 Data File : VV028125.D  
 Acq On : 26 Sep 2022 18:45  
 Operator : SY/MD  
 Sample : N4820-09  
 Misc : 25.0mL/MSVOA\_V/WATER  
 ALS Vial : 16 Sample Multiplier: 1

Instrument :  
 MSVOA\_V  
 ClientSampleId :  
 CB8M8

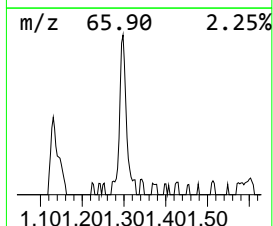
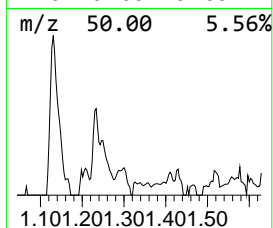
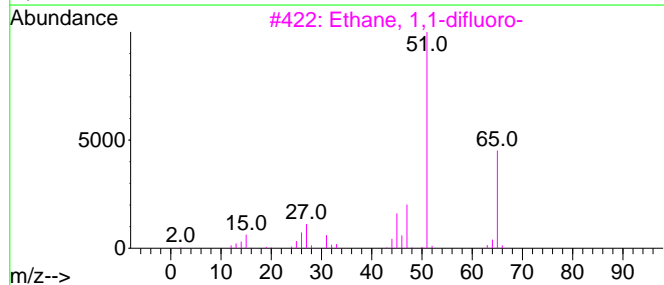
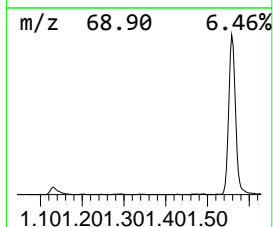
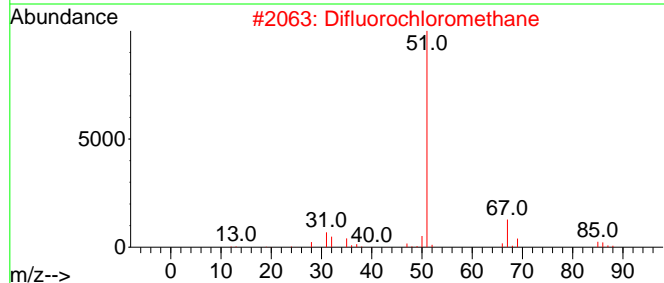
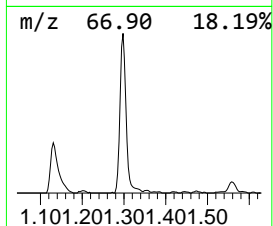
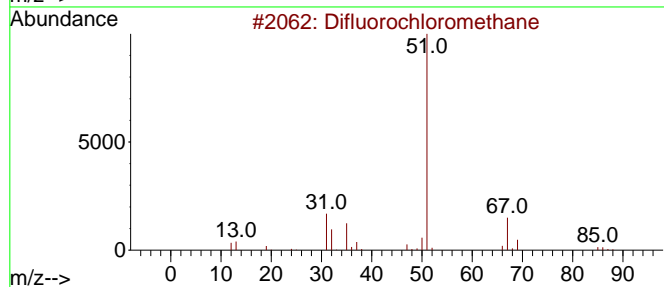
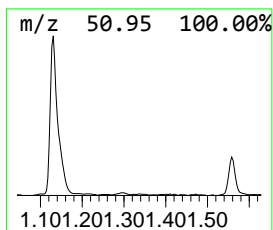
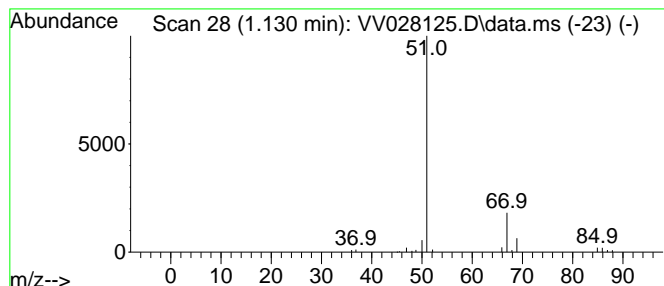
Quant Method : Z:\voasrv\HPCHEM1\MSVOA\_V\Method\SFAMVTR092222WMA.M  
 Quant Title : TRACE VOA SFAM1.0

TIC Library : C:\Database\NIST20.L  
 TIC Integration Parameters: LSCINT.P

\*\*\*\*\*  
 Peak Number 1 Difluorochloromethane Concentration Rank 6

R.T.	EstConc	Area	Relative to ISTD	R.T.
1.130	0.93 ug/L	74458	1,4-Difluorobenzene	5.613

Hit#	of 5	Tentative ID	MW	MolForm	CAS#	Qual
1		Difluorochloromethane	86	CHClF2	000075-45-6	91
2		Difluorochloromethane	86	CHClF2	000075-45-6	91
3		Ethane, 1,1-difluoro-	66	C2H4F2	000075-37-6	7
4		Ethane, 1,1-difluoro-	66	C2H4F2	000075-37-6	5
5		2-p-Nitrobenzoyl-1,3,5-tribenzyl...	569	C33H31N08	1000129-85-6	4



Data Path : Z:\voasrv\HPCHEM1\MSVOA\_V\Data\VV092622\  
 Data File : VV028125.D  
 Acq On : 26 Sep 2022 18:45  
 Operator : SY/MD  
 Sample : N4820-09  
 Misc : 25.0mL/MSVOA\_V/WATER  
 ALS Vial : 16 Sample Multiplier: 1

Instrument :  
 MSVOA\_V  
 ClientSampleId :  
 CB8M8

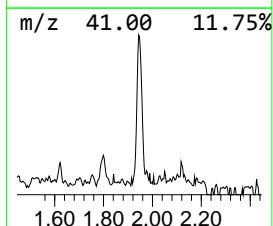
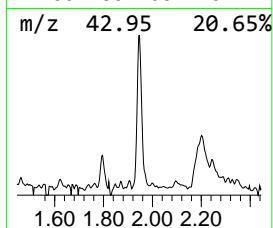
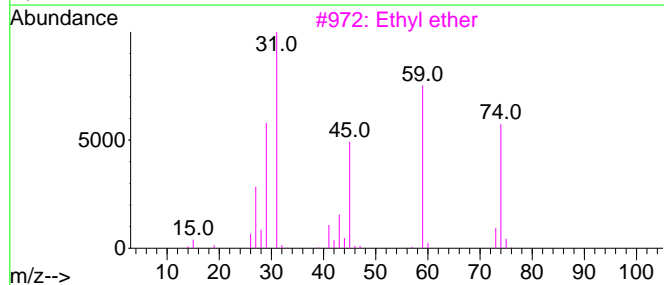
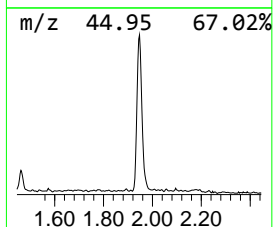
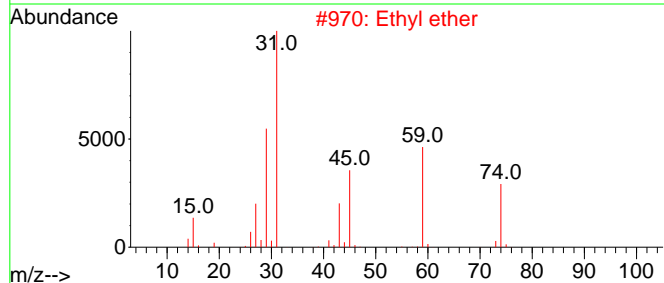
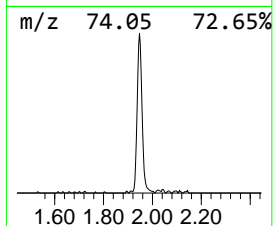
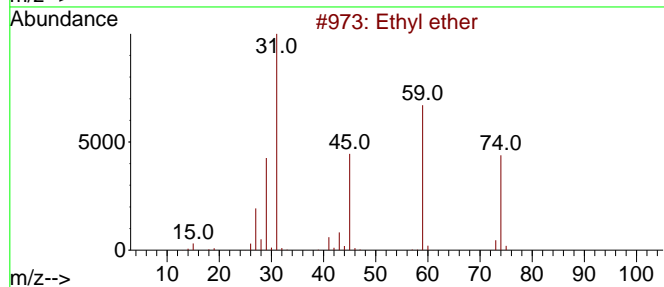
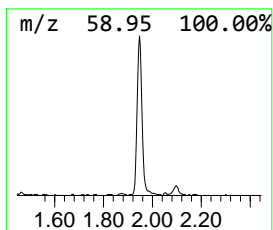
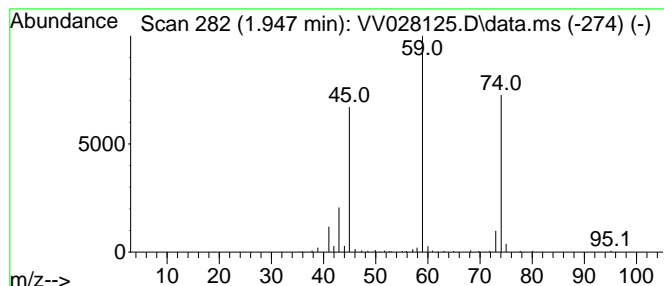
Quant Method : Z:\voasrv\HPCHEM1\MSVOA\_V\Method\SFAMVTR092222WMA.M  
 Quant Title : TRACE VOA SFAM1.0

TIC Library : C:\Database\NIST20.L  
 TIC Integration Parameters: LSCINT.P

\*\*\*\*\*  
 Peak Number 3 Ethyl ether Concentration Rank 5

R.T.	EstConc	Area	Relative to ISTD	R.T.
1.947	1.16 ug/L	92685	1,4-Difluorobenzene	5.613

Hit#	of	Tentative ID	MW	MolForm	CAS#	Qual
1	5	Ethyl ether	74	C4H10O	000060-29-7	90
2		Ethyl ether	74	C4H10O	000060-29-7	83
3		Ethyl ether	74	C4H10O	000060-29-7	64
4		Hydrazine, trimethyl-	74	C3H10N2	001741-01-1	58
5		Ethane, 1,2-diethoxy-	118	C6H14O2	000629-14-1	56



Data Path : Z:\voasrv\HPCHEM1\MSVOA\_V\Data\VV092622\  
 Data File : VV028125.D  
 Acq On : 26 Sep 2022 18:45  
 Operator : SY/MD  
 Sample : N4820-09  
 Misc : 25.0mL/MSVOA\_V/WATER  
 ALS Vial : 16 Sample Multiplier: 1

Instrument :  
 MSVOA\_V  
 ClientSampleId :  
 CB8M8

Quant Method : Z:\voasrv\HPCHEM1\MSVOA\_V\Method\SFAMVTR092222WMA.M  
 Quant Title : TRACE VOA SFAM1.0

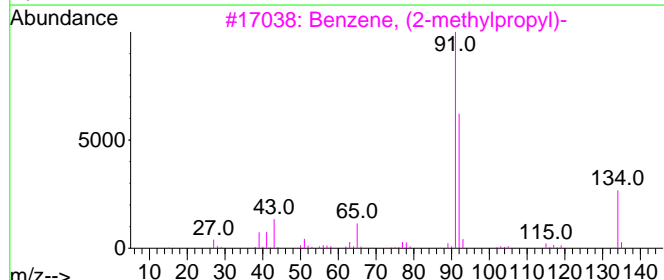
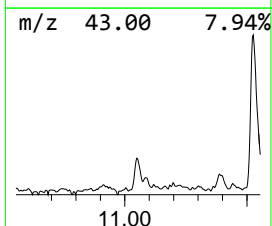
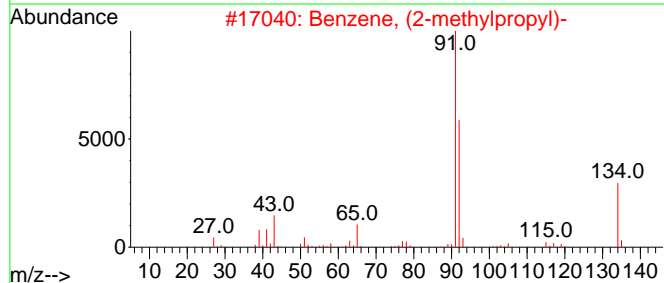
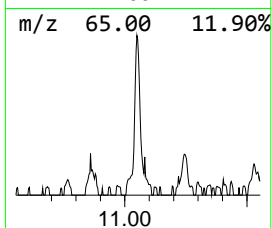
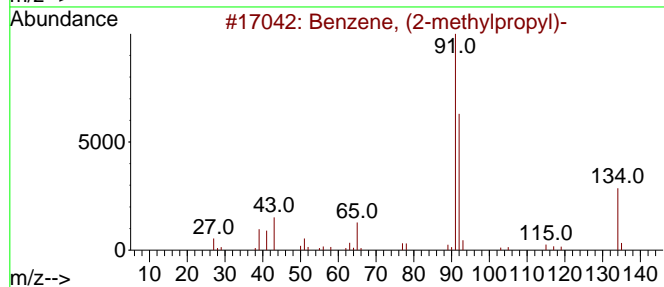
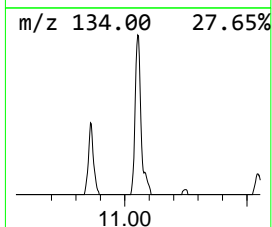
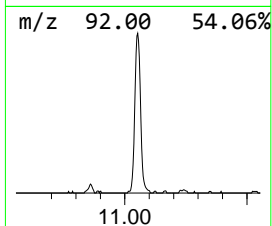
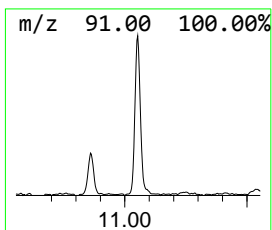
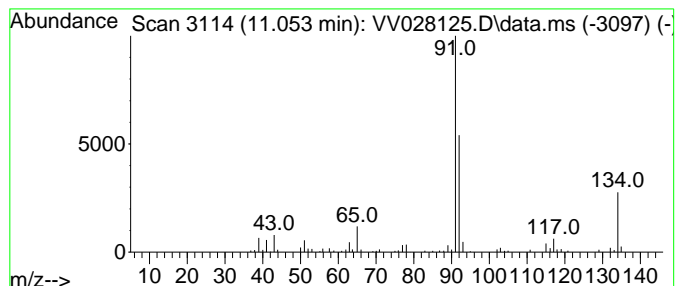
TIC Library : C:\Database\NIST20.L  
 TIC Integration Parameters: LSCINT.P

\*\*\*\*\*  
 Peak Number 5 Benzene, (2-methylpropyl)- Concentration Rank 7

R.T.	EstConc	Area	Relative to ISTD	R.T.
11.053	0.82 ug/L	93390	1,4-Dichlorobenzene-d4	11.246

Hit#	of	5	Tentative ID	MW	MolForm	CAS#	Qual
1			Benzene, (2-methylpropyl)-	134	C10H14	000538-93-2	90
2			Benzene, (2-methylpropyl)-	134	C10H14	000538-93-2	90
3			Benzene, (2-methylpropyl)-	134	C10H14	000538-93-2	90
4			Benzene, (2-methylpropyl)-	134	C10H14	000538-93-2	87
5			Benzene, (2-methylpropyl)-	134	C10H14	000538-93-2	87



Data Path : Z:\voasrv\HPCHEM1\MSVOA\_V\Data\VV092622\  
 Data File : VV028125.D  
 Acq On : 26 Sep 2022 18:45  
 Operator : SY/MD  
 Sample : N4820-09  
 Misc : 25.0mL/MSVOA\_V/WATER  
 ALS Vial : 16 Sample Multiplier: 1

Instrument :  
 MSVOA\_V  
 ClientSampleId :  
 CB8M8

Quant Method : Z:\voasrv\HPCHEM1\MSVOA\_V\Method\SFAMVTR092222WMA.M  
 Quant Title : TRACE VOA SFAM1.0

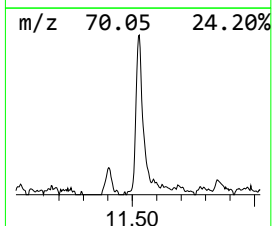
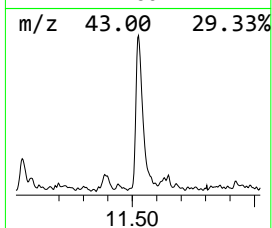
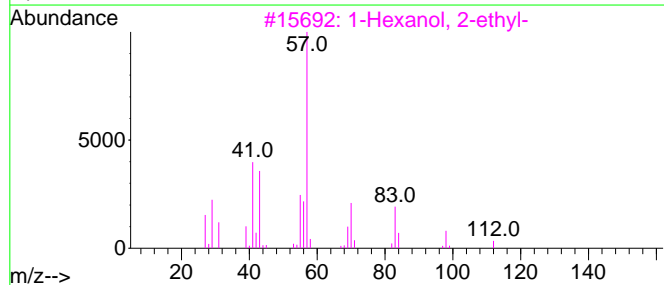
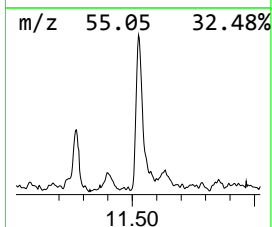
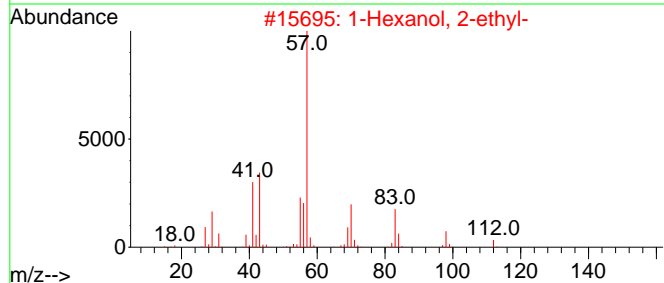
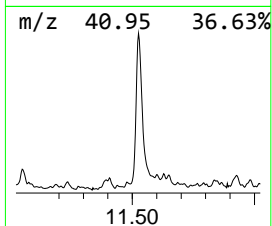
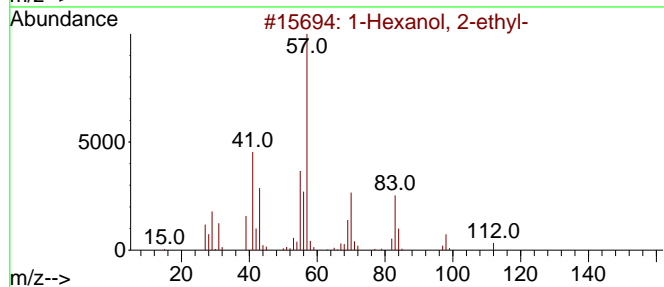
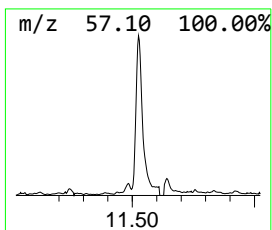
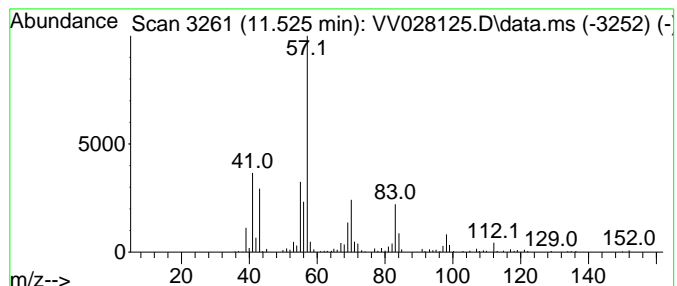
TIC Library : C:\Database\NIST20.L  
 TIC Integration Parameters: LSCINT.P

\*\*\*\*\*  
 Peak Number 6 1-Hexanol, 2-ethyl- Concentration Rank 1

R.T.	EstConc	Area	Relative to ISTD	R.T.
11.525	1.80 ug/L	204233	1,4-Dichlorobenzene-d4	11.246

Hit#	of 5	Tentative ID	MW	MolForm	CAS#	Qual
1		1-Hexanol, 2-ethyl-	130	C8H18O	000104-76-7	83
2		1-Hexanol, 2-ethyl-	130	C8H18O	000104-76-7	78
3		1-Hexanol, 2-ethyl-	130	C8H18O	000104-76-7	78
4		1-Hexanol, 2-ethyl-	130	C8H18O	000104-76-7	78
5		1-Pentanol, 2-ethyl-4-methyl-	130	C8H18O	000106-67-2	59



Data Path : Z:\voasrv\HPCHEM1\MSVOA\_V\Data\VV092622\  
 Data File : VV028125.D  
 Acq On : 26 Sep 2022 18:45  
 Operator : SY/MD  
 Sample : N4820-09  
 Misc : 25.0mL/MSVOA\_V/WATER  
 ALS Vial : 16 Sample Multiplier: 3

Instrument :  
 MSVOA\_V  
 ClientSampleId :  
 CB8M8

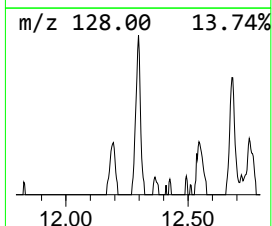
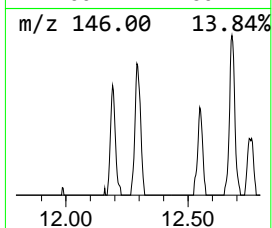
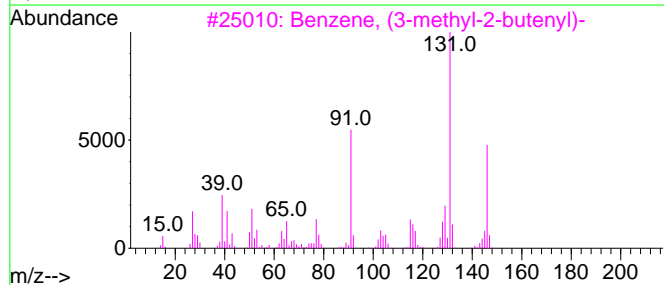
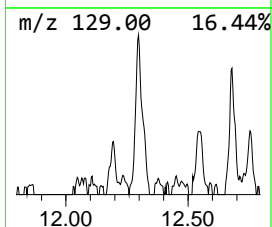
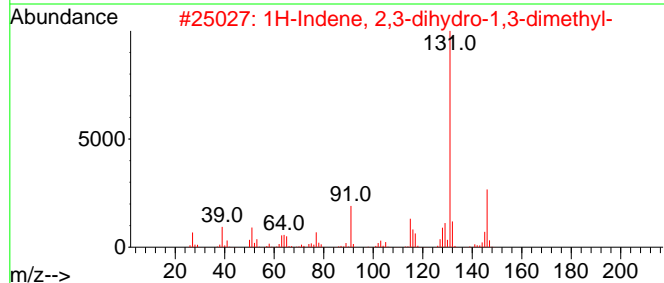
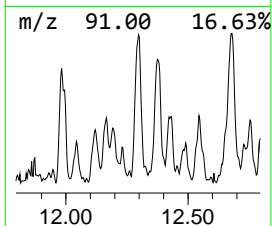
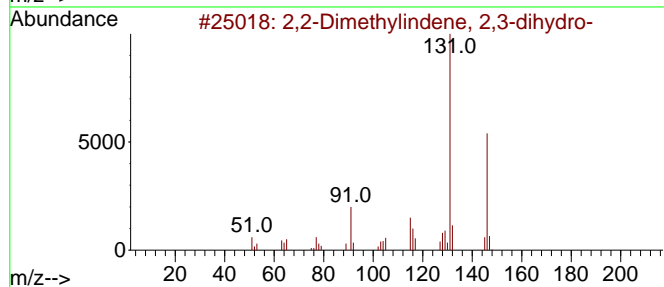
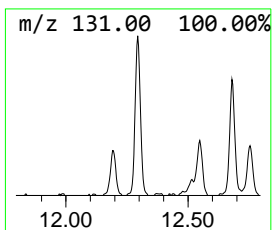
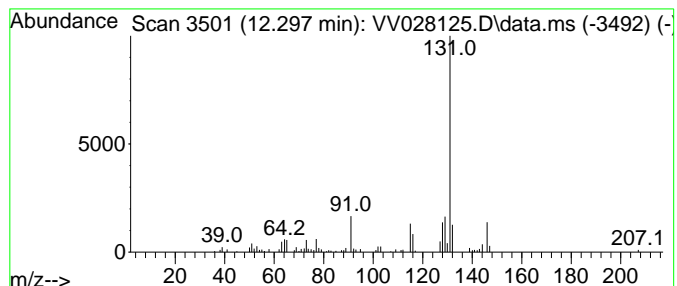
Quant Method : Z:\voasrv\HPCHEM1\MSVOA\_V\Method\SFAMVTR092222WMA.M  
 Quant Title : TRACE VOA SFAM1.0

TIC Library : C:\Database\NIST20.L  
 TIC Integration Parameters: LSCINT.P

\*\*\*\*\*  
 Peak Number 7 2,2-Dimethylindene, 2,3-dih... Concentration Rank 9

R.T.	EstConc	Area	Relative to ISTD	R.T.
12.297	0.74 ug/L	84656	1,4-Dichlorobenzene-d4	11.246

Hit#	of 5	Tentative ID	MW	MolForm	CAS#	Qual
1		2,2-Dimethylindene, 2,3-dihydro-	146	C11H14	020836-11-7	91
2		1H-Indene, 2,3-dihydro-1,3-dimet...	146	C11H14	004175-53-5	91
3		Benzene, (3-methyl-2-butenyl)-	146	C11H14	004489-84-3	91
4		1H-Indene, 2,3-dihydro-1,6-dimet...	146	C11H14	017059-48-2	90
5		1H-Indene, 2,3-dihydro-1,1-dimet...	146	C11H14	004912-92-9	87



Data Path : Z:\voasrv\HPCHEM1\MSVOA\_V\Data\VV092622\  
 Data File : VV028125.D  
 Acq On : 26 Sep 2022 18:45  
 Operator : SY/MD  
 Sample : N4820-09  
 Misc : 25.0mL/MSVOA\_V/WATER  
 ALS Vial : 16 Sample Multiplier: 1

Instrument :  
 MSVOA\_V  
 ClientSampleId :  
 CB8M8

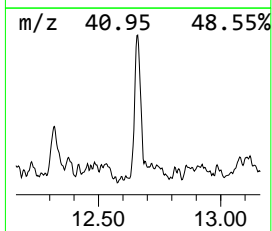
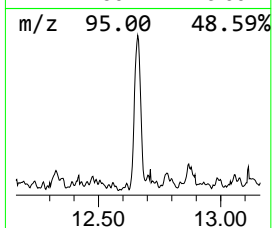
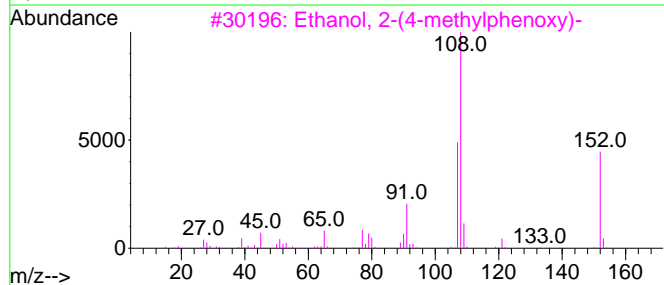
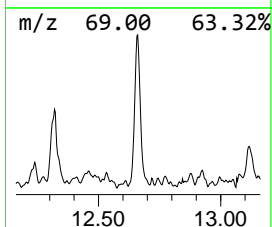
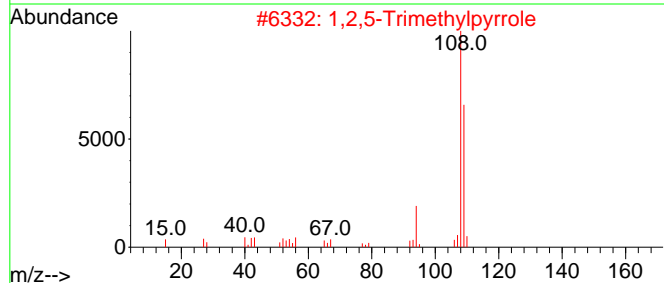
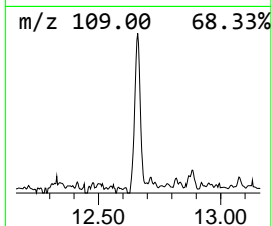
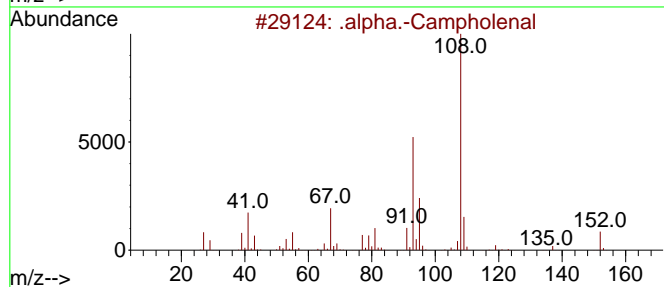
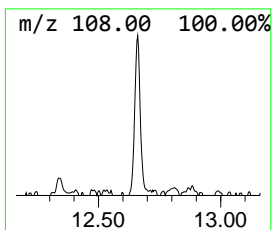
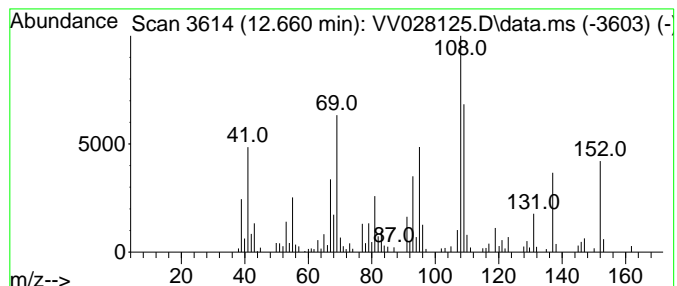
Quant Method : Z:\voasrv\HPCHEM1\MSVOA\_V\Method\SFAMVTR092222WMA.M  
 Quant Title : TRACE VOA SFAM1.0

TIC Library : C:\Database\NIST20.L  
 TIC Integration Parameters: LSCINT.P

\*\*\*\*\*  
 Peak Number 8 unknown-01 Concentration Rank 3

R.T.	EstConc	Area	Relative to ISTD	R.T.
12.661	1.37 ug/L	155504	1,4-Dichlorobenzene-d4	11.246

Hit#	of 5	Tentative ID	MW	MolForm	CAS#	Qual
1		.alpha.-Campholenal	152	C10H16O	004501-58-0	43
2		1,2,5-Trimethylpyrrole	109	C7H11N	000930-87-0	38
3		Ethanol, 2-(4-methylphenoxy)-	152	C9H12O2	015149-10-7	38
4		Benzenamine, 4-ethoxy-	137	C8H11NO	000156-43-4	38
5		Ethanol, 2-(4-methylphenoxy)-	152	C9H12O2	015149-10-7	38





Data Path : Z:\voasrv\HPCHEM1\MSVOA\_V\Data\VV092622\  
 Data File : VV028125.D  
 Acq On : 26 Sep 2022 18:45  
 Operator : SY/MD  
 Sample : N4820-09  
 Misc : 25.0mL/MSVOA\_V/WATER  
 ALS Vial : 16 Sample Multiplier: 1

Instrument :  
 MSVOA\_V  
 ClientSampleId :  
 CB8M8

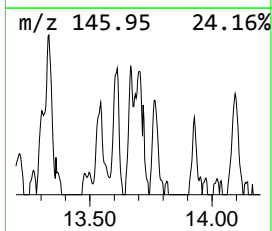
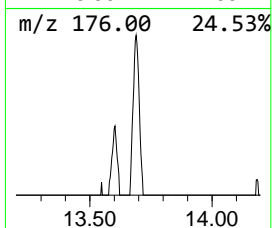
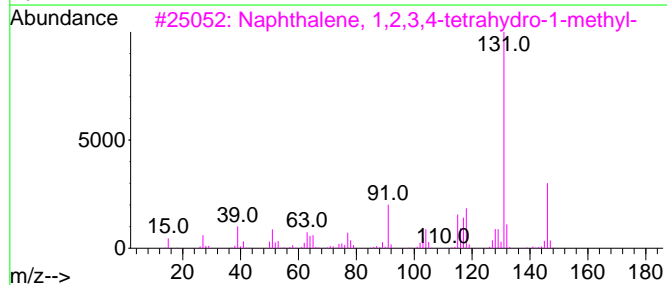
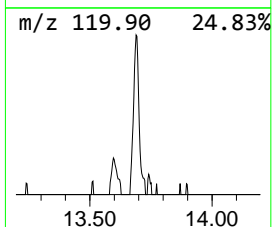
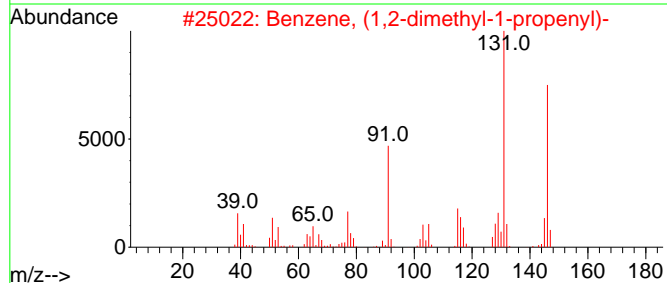
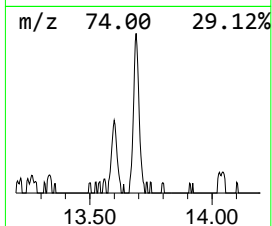
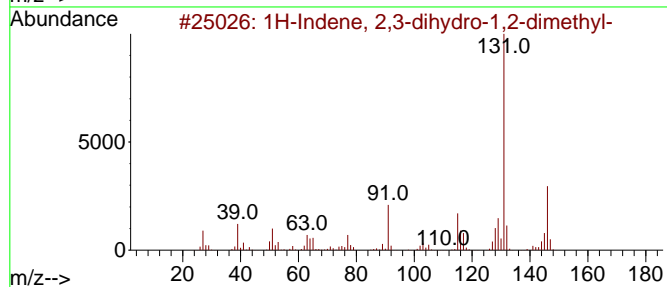
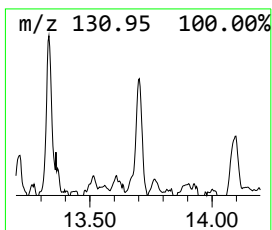
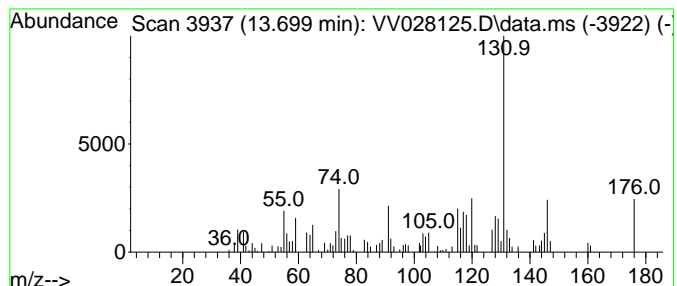
Quant Method : Z:\voasrv\HPCHEM1\MSVOA\_V\Method\SFAMVTR092222WMA.M  
 Quant Title : TRACE VOA SFAM1.0

TIC Library : C:\Database\NIST20.L  
 TIC Integration Parameters: LSCINT.P

\*\*\*\*\*  
 Peak Number 9 1H-Indene, 2,3-dihydro-1,2-... Concentration Rank 10

R.T.	EstConc	Area	Relative to ISTD	R.T.
13.699	0.57 ug/L	64832	1,4-Dichlorobenzene-d4	11.246

Hit#	of 5	Tentative ID	MW	MolForm	CAS#	Qual
1		1H-Indene, 2,3-dihydro-1,2-dimet...	146	C11H14	017057-82-8	83
2		Benzene, (1,2-dimethyl-1-propenyl)-	146	C11H14	000769-57-3	70
3		Naphthalene, 1,2,3,4-tetrahydro-...	146	C11H14	001559-81-5	70
4		Bicyclo[4.2.0]octa-1,3,5-triene, ...	146	C11H14	027087-54-3	64
5		Benzene, (3-methyl-2-butenyl)-	146	C11H14	004489-84-3	64



Data Path : Z:\voasrv\HPCHEM1\MSVOA\_V\Data\VV092622\  
 Data File : VV028125.D  
 Acq On : 26 Sep 2022 18:45  
 Operator : SY/MD  
 Sample : N4820-09  
 Misc : 25.0mL/MSVOA\_V/WATER  
 ALS Vial : 16 Sample Multiplier: 1

Instrument :  
 MSVOA\_V  
 ClientSampleId :  
 CB8M8

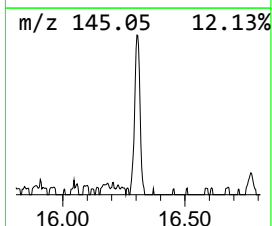
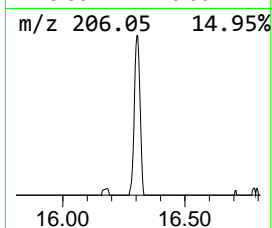
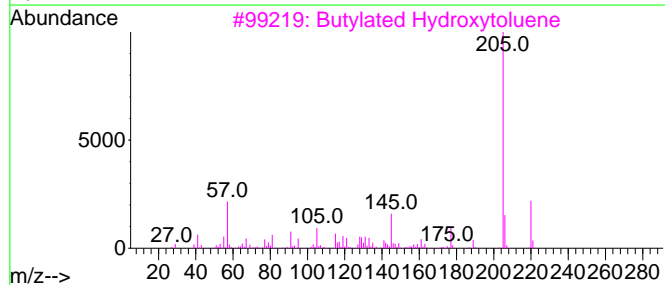
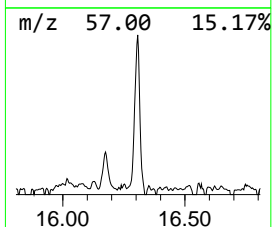
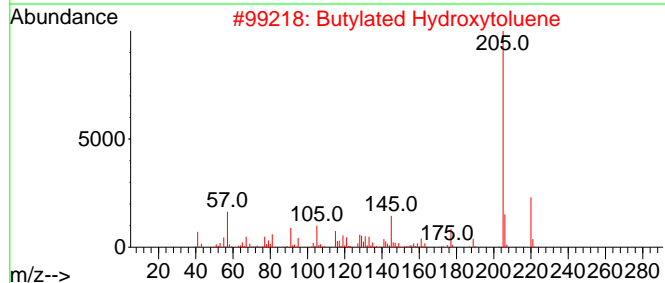
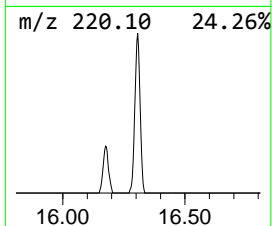
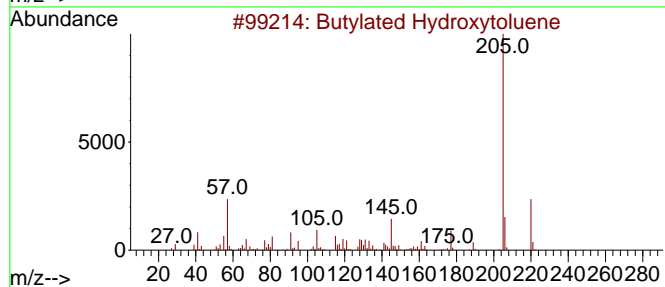
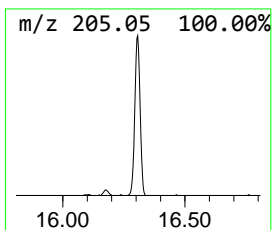
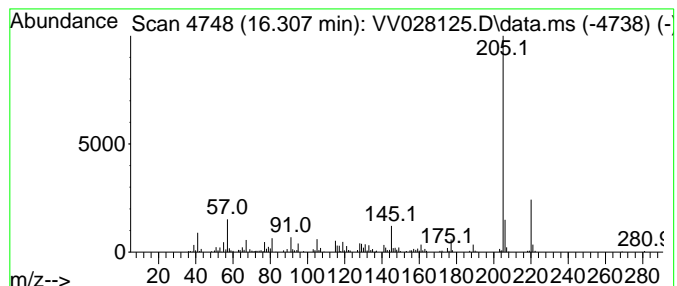
Quant Method : Z:\voasrv\HPCHEM1\MSVOA\_V\Method\SFAMVTR092222WMA.M  
 Quant Title : TRACE VOA SFAM1.0

TIC Library : C:\Database\NIST20.L  
 TIC Integration Parameters: LSCINT.P

\*\*\*\*\*  
 Peak Number 10 Butylated Hydroxytoluene Concentration Rank 4

R.T.	EstConc	Area	Relative to ISTD	R.T.
16.307	1.28 ug/L	145857	1,4-Dichlorobenzene-d4	11.246

Hit#	of 5	Tentative ID	MW	MolForm	CAS#	Qual
1		Butylated Hydroxytoluene	220	C15H24O	000128-37-0	97
2		Butylated Hydroxytoluene	220	C15H24O	000128-37-0	97
3		Butylated Hydroxytoluene	220	C15H24O	000128-37-0	96
4		Butylated Hydroxytoluene	220	C15H24O	000128-37-0	94
5		Ethyl 4-oxo-2-phenylpentanoate	220	C13H16O3	1000427-11-2	93



Data Path : Z:\voasrv\HPCHEM1\MSVOA\_V\Data\VV092622\  
 Data File : VV028125.D  
 Acq On : 26 Sep 2022 18:45  
 Operator : SY/MD  
 Sample : N4820-09  
 Misc : 25.0mL/MSVOA\_V/WATER  
 ALS Vial : 16 Sample Multiplier: 1

Instrument :  
 MSVOA\_V  
 ClientSampleId :  
 CB8M8

Quant Method : Z:\voasrv\HPCHEM1\MSVOA\_V\Method\SFAMVTR092222WMA.M  
 Quant Title : TRACE VOA SFAM1.0

TIC Library : C:\Database\NIST0.L  
 TIC Integration Parameters: LSCINT.P

TIC Top Hit name	RT	EstConc	Units	Response	--Internal Standard--			
					#	RT	Resp	Conc
Difluorochlorom...	1.130	0.9	ug/L	74458	1	5.613	399367	5.0
Ethyl ether	1.947	1.2	ug/L	92685	1	5.613	399367	5.0
Benzene, (2-met...	11.053	0.8	ug/L	93390	3	11.246	568688	5.0
1-Hexanol, 2-et...	11.525	1.8	ug/L	204233	3	11.246	568688	5.0
2,2-Dimethylind...	12.297	0.7	ug/L	84656	3	11.246	568688	5.0
unknown-01	12.661	1.4	ug/L	155504	3	11.246	568688	5.0
1H-Indene, 2,3-...	13.699	0.6	ug/L	64832	3	11.246	568688	5.0
Butylated Hydro...	16.307	1.3	ug/L	145857	3	11.246	568688	5.0