

Data Path : Z:\voasrv\HPCHEM1\MSVOA\_V\Data\VV092922\  
 Data File : VV028187.D  
 Acq On : 29 Sep 2022 15:22  
 Operator : SY/MD  
 Sample : N4866-06  
 Misc : 25.0mL/MSVOA\_V/WATER  
 ALS Vial : 14 Sample Multiplier: 1

Instrument :  
 MSVOA\_V  
 ClientSampleId :  
 EXFQ2

Integration Parameters: rteint.p  
 Integrator: RTE  
 Smoothing : ON Filtering: 5  
 Sampling : 1 Min Area: 3 % of largest Peak  
 Start Thrs: 0.1 Max Peaks: 100  
 Stop Thrs : 0 Peak Location: TOP

If leading or trailing edge < 100 prefer < Baseline drop else tangent >  
 Peak separation: 5

Method : Z:\voasrv\HPCHEM1\MSVOA\_V\Method\SFAMVTR092222WMA.M  
 Title : TRACE VOA SFAM1.0

Signal : TIC: VV028187.D\data.ms

peak #	R.T. min	first scan	max scan	last scan	PK TY	peak height	corr. area	corr. % max.	% of total
1	1.301	74	81	137	rBV2	34995866	49491041	38.19%	27.636%
2	3.905	869	891	953	rBV3	50151325	129591627	100.00%	72.364%

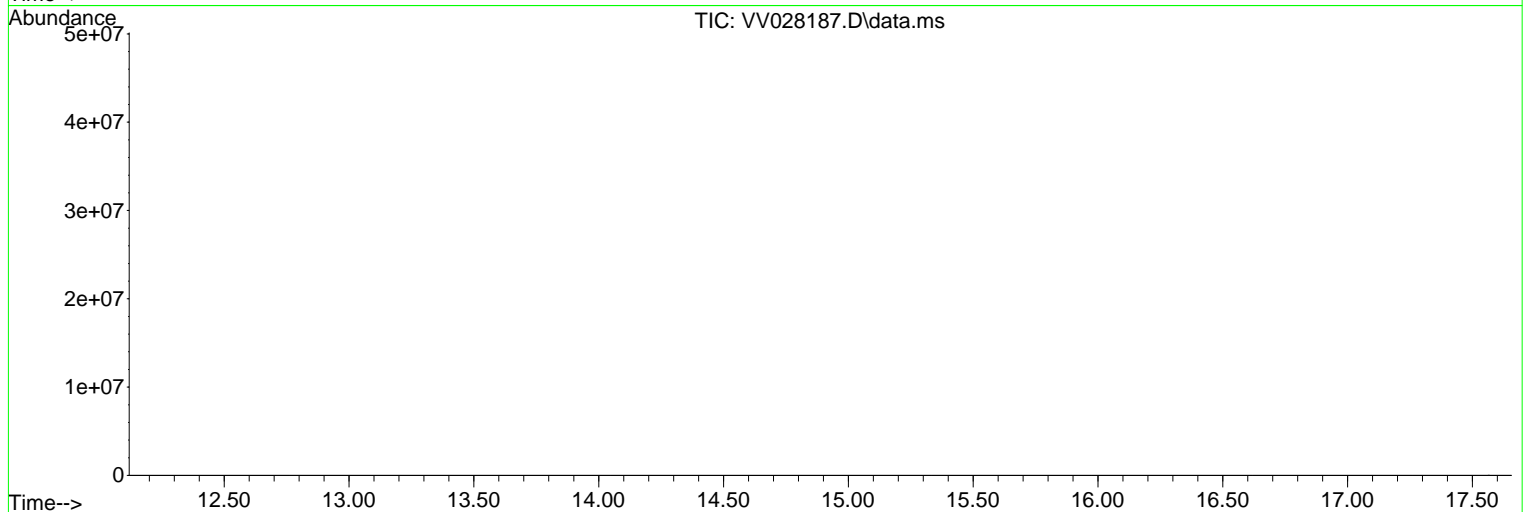
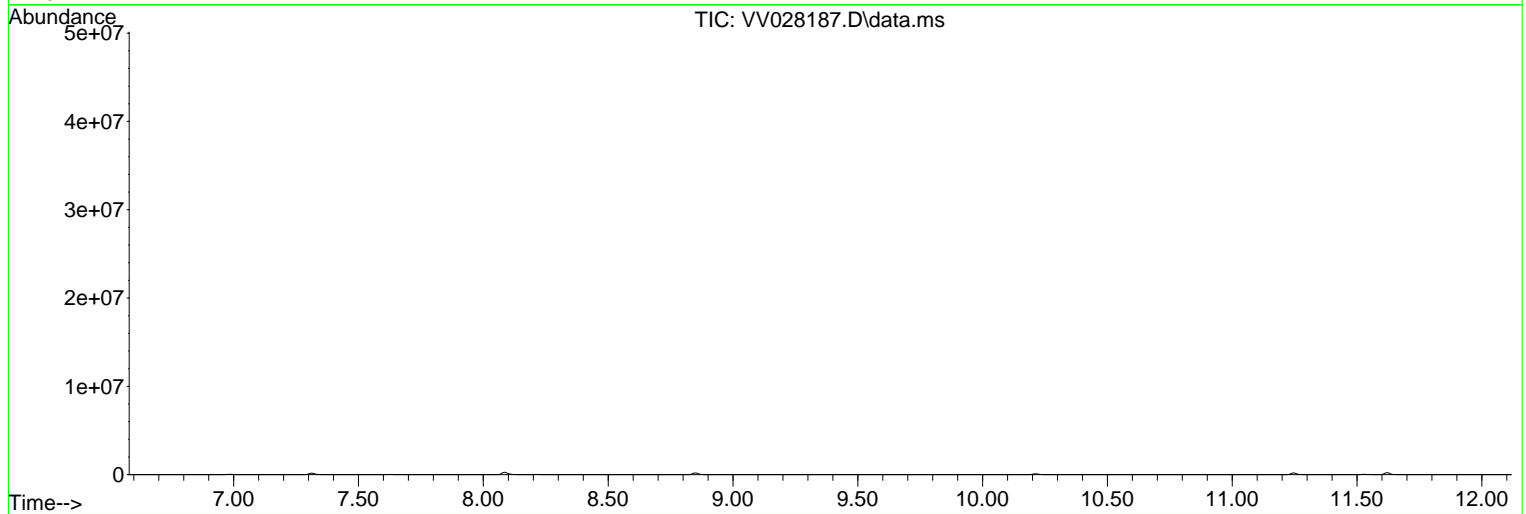
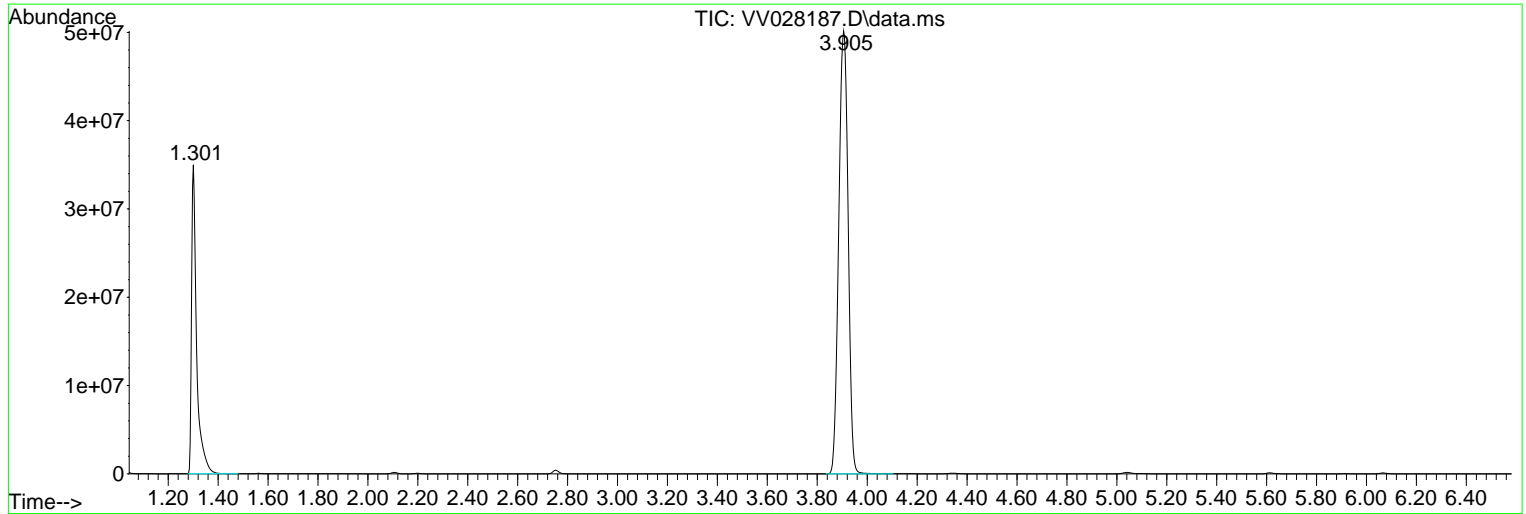
Sum of corrected areas: 179082668

Data Path : Z:\voasrv\HPCHEM1\MSVOA\_V\Data\VV092922\  
Data File : VV028187.D  
Acq On : 29 Sep 2022 15:22  
Operator : SY/MD  
Sample : N4866-06  
Misc : 25.0mL/MSVOA\_V/WATER  
ALS Vial : 14 Sample Multiplier: 1

Instrument :  
MSVOA\_V  
ClientSampleId :  
EXFQ2

Quant Method : Z:\voasrv\HPCHEM1\MSVOA\_V\Method\SFAMVTR092222WMA.M  
Quant Title : TRACE VOA SFAM1.0

TIC Library : C:\Database\NIST20.L  
TIC Integration Parameters: LSCINT.P



Library Search Compound Report

Data Path : Z:\voasrv\HPCHEM1\MSVOA\_V\Data\VV092922\  
Data File : VV028187.D  
Acq On : 29 Sep 2022 15:22  
Operator : SY/MD  
Sample : N4866-06  
Misc : 25.0mL/MSVOA\_V/WATER  
ALS Vial : 14 Sample Multiplier: 1

Instrument :  
MSVOA\_V  
ClientSampleId :  
EXFQ2

Quant Method : Z:\voasrv\HPCHEM1\MSVOA\_V\Method\SFAMVTR092222WMA.M  
Quant Title : TRACE VOA SFAM1.0

TIC Library : C:\Database\NIST20.L  
TIC Integration Parameters: LSCINT.P

No Library Search Compounds Detected

\*\*\*\*\*

Data Path : Z:\voasrv\HPCHEM1\MSVOA\_V\Data\VV092922\  
Data File : VV028187.D  
Acq On : 29 Sep 2022 15:22  
Operator : SY/MD  
Sample : N4866-06  
Misc : 25.0mL/MSVOA\_V/WATER  
ALS Vial : 14 Sample Multiplier: 1

Instrument :  
MSVOA\_V  
ClientSampleId :  
EXFQ2

Quant Method : Z:\voasrv\HPCHEM1\MSVOA\_V\Method\SFAMVTR092222WMA.M  
Quant Title : TRACE VOA SFAM1.0

TIC Library : C:\Database\NIST0.L  
TIC Integration Parameters: LSCINT.P

TIC Top Hit name	RT	EstConc	Units	Response	--Internal Standard--		
					#	RT	Resp Conc

---