

Data Path : Z:\voasrv\HPCHEM1\MSVOA\_V\DATA\VV101024\  
 Data File : VV037810.D  
 Acq On : 10 Oct 2024 16:51  
 Operator : SY/MD  
 Sample : P4379-07  
 Mi sc : 5mL/MSVOA\_V/WATER  
 ALS Vial : 1 Sample Multiplier: 1

**Instrument :**  
 MSVOA\_V  
**ClientSampleId :**

Quant Time: Oct 11 05:15:28 2024  
 Quant Method : Z:\voasrv\HPCHEM1\MSVOA\_V\Method\SFAMVLM092624WMA.M  
 Quant Title : VOC Analysis  
 QLast Update : Fri Oct 11 05:10:27 2024  
 Response via : Initial Calibration

Compound	R. T.	QI on	Response	Conc	Units	Dev(Min)
Internal Standards						
1) 1,4-Difluorobenzene	5.529	114	625571	50.000	ug/L	0.00
28) Chlorobenzene-d5	8.776	117	620777	50.000	ug/L	0.00
58) 1,4-Dichlorobenzene-d4	11.178	152	337906	50.000	ug/L	0.00

System Monitoring Compounds						
4) Vinyl chloride-d3	1.278	65	203405	37.040	ug/L	0.00
Spike Amount	50.000	Range	60 - 135	Recovery	=	74.080%
7) Chloroethane-d5	1.532	69	173173	40.626	ug/L	0.00
Spike Amount	50.000	Range	70 - 130	Recovery	=	81.260%
11) 1,1-Dichloroethene-d2	2.056	65	92276	40.220	ug/L	0.00
Spike Amount	50.000	Range	60 - 125	Recovery	=	80.440%
21) 2-Butanone-d5	3.796	46	174182	89.051	ug/L	0.00
Spike Amount	100.000	Range	40 - 130	Recovery	=	89.050%
24) Chloroform-d	4.243	84	443737	45.418	ug/L	0.00
Spike Amount	50.000	Range	70 - 125	Recovery	=	90.840%
26) 1,2-Dichloroethane-d4	4.937	65	259907	45.449	ug/L	0.00
Spike Amount	50.000	Range	70 - 125	Recovery	=	90.900%
32) Benzene-d6	4.953	84	850216	43.768	ug/L	0.00
Spike Amount	50.000	Range	70 - 125	Recovery	=	87.540%
36) 1,2-Dichloropropane-d6	5.985	67	270872	43.791	ug/L	0.00
Spike Amount	50.000	Range	70 - 120	Recovery	=	87.580%
41) Toluene-d8	7.236	98	794630	45.113	ug/L	0.00
Spike Amount	50.000	Range	80 - 120	Recovery	=	90.220%
43) trans-1,3-Dichloropropene	7.548	79	122594	42.664	ug/L	0.00
Spike Amount	50.000	Range	60 - 125	Recovery	=	85.320%
47) 2-Hexanone-d5	8.024	63	120964	92.611	ug/L	0.00
Spike Amount	100.000	Range	45 - 130	Recovery	=	92.610%
56) 1,1,2,2-Tetrachloroethane	10.146	84	329984	45.913	ug/L	0.00
Spike Amount	50.000	Range	65 - 120	Recovery	=	91.820%
66) 1,2-Dichlorobenzene-d4	11.551	152	306327	43.021	ug/L	0.00
Spike Amount	50.000	Range	80 - 120	Recovery	=	86.040%

Target Compounds						Qvalue
2) Dichlorodifluoromethane	1.108	85	229580	43.109	ug/L	100
3) Chloromethane	1.220	50	223145	43.160	ug/L	98
5) Vinyl chloride	1.285	62	243460	43.923	ug/L	99
6) Bromomethane	1.487	94	133382	43.361	ug/L	99
8) Chloroethane	1.548	64	153279	44.866	ug/L	99
9) Trichlorofluoromethane	1.712	101	348404	46.696	ug/L	99
10) 1,1,2-Trichloro-1,2,2-trifluoroethane	2.069	101	211325	47.398	ug/L	99
12) 1,1-Dichloroethene	2.069	96	189646	45.536	ug/L	83
13) Acetone	2.114	43	128999	67.276	ug/L	98
14) Carbon disulfide	2.240	76	516886	39.760	ug/L	100
15) Methyl Acetate	2.371	43	161886	48.379	ug/L	100
16) Methylene chloride	2.445	84	217014	46.020	ug/L	99
17) trans-1,2-Dichloroethene	2.690	96	197198	44.758	ug/L	99
18) Methyl tert-butyl Ether	2.706	73	618500	48.930	ug/L	99
19) 1,1-Dichloroethane	3.105	63	398978	47.264	ug/L	99
20) cis-1,2-Dichloroethene	3.809	96	227536	46.149	ug/L	99
22) 2-Butanone	3.876	43	181748	85.637	ug/L	97
23) Bromochloromethane	4.140	128	122107	47.877	ug/L	97
25) Chloroform	4.272	83	418215	47.850	ug/L	100

Data Path : Z:\voasrv\HPCHEM1\MSVOA\_V\DATA\VV101024\  
 Data File : VV037810.D  
 Acq On : 10 Oct 2024 16:51  
 Operator : SY/MD  
 Sample : P4379-07  
 Mi sc : 5mL/MSVOA\_V/WATER  
 ALS Vial : 1 Sample Multiplier: 1

**Instrument :**  
 MSVOA\_V  
**ClientSampleId :**

Quant Time: Oct 11 05:15:28 2024  
 Quant Method : Z:\voasrv\HPCHEM1\MSVOA\_V\Method\SFAMVLM092624WMA.M  
 Quant Title : VOC Analysis  
 QLast Update : Fri Oct 11 05:10:27 2024  
 Response via : Initial Calibration

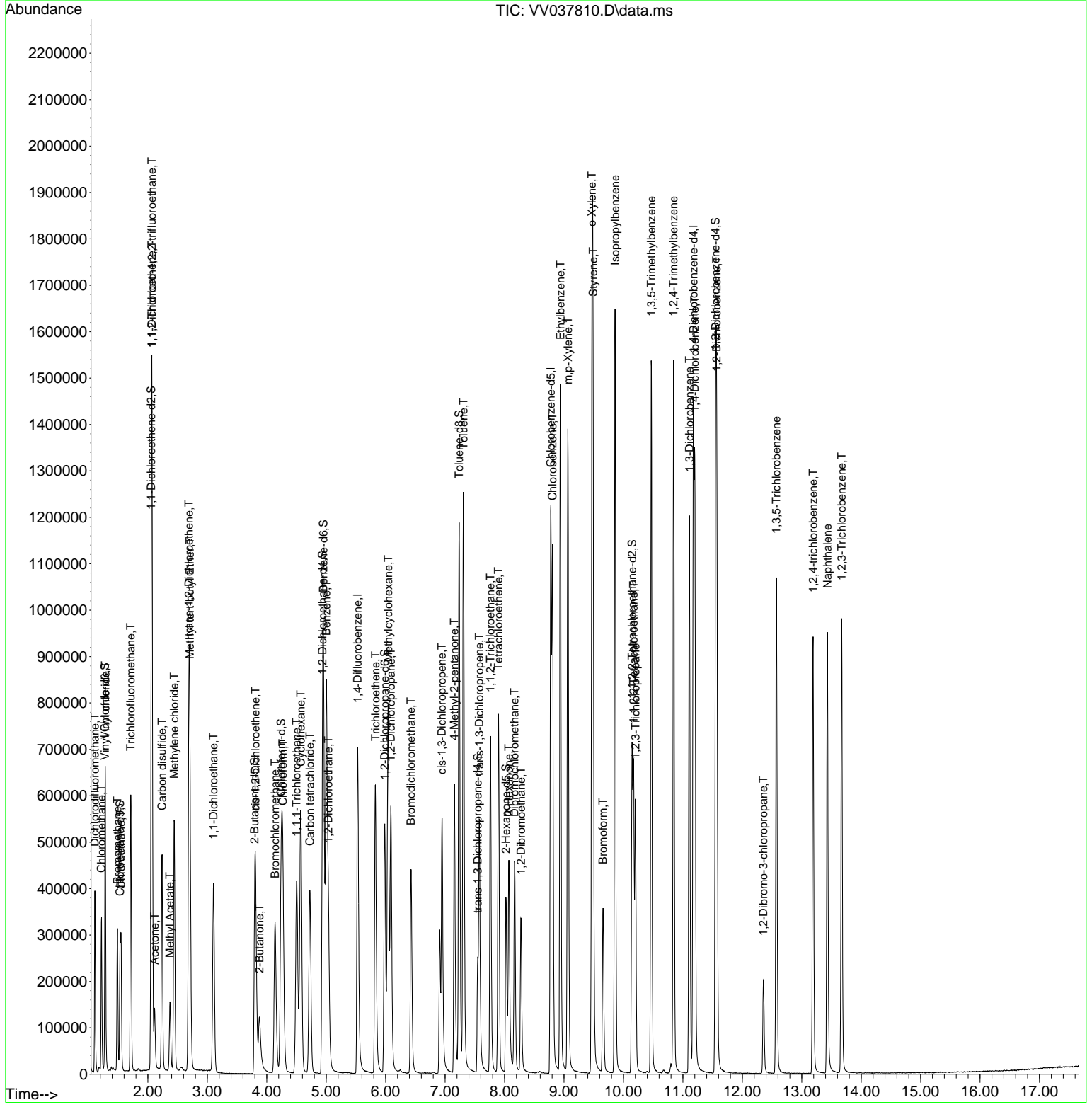
Compound	R. T.	QI on	Response	Conc	Units	Dev(Min)
27) 1,2-Di chl oroethane	5.037	62	303644	49.212	ug/L	98
29) Cycl ohexane	4.571	56	297088	42.150	ug/L	100
30) 1,1,1-Tri chl oroethane	4.503	97	355475	46.494	ug/L	99
31) Carbon tetrachl ori de	4.725	117	304109	45.750	ug/L	98
33) Benzene	5.002	78	870504	46.496	ug/L	100
34) Tri chl oroethene	5.828	95	223708	44.868	ug/L	99
35) Methyl cycl ohexane	6.043	83	332118	43.300	ug/L	100
37) 1,2-Di chl oropropane	6.088	63	234264	48.456	ug/L	98
38) Bromodi chl oromethane	6.426	83	307465	47.575	ug/L	98
39) ci s-1,3-Di chl oropropene	6.947	75	359285	46.556	ug/L	99
40) 4-Methyl -2-pentanone	7.156	43	396346	100.689	ug/L	99
42) Tol uene	7.310	91	936657	48.259	ug/L	99
44) trans-1,3-Di chl oropropene	7.577	75	325051	46.784	ug/L	97
45) 1,1,2-Tri chl oroethane	7.763	97	229483	49.435	ug/L	100
46) Tetrachl oroethene	7.899	164	168913	44.310	ug/L	99
48) 2-Hexanone	8.072	43	267117	87.270	ug/L	95
49) Di bromochl oromethane	8.169	129	238232	48.489	ug/L	98
50) 1,2-Di bromoethane	8.278	107	227080	47.323	ug/L	100
51) Chl orobenzene	8.805	112	614622	46.480	ug/L	99
52) Ethyl benzene	8.940	91	1022512	46.802	ug/L	99
53) m,p-Xyl ene	9.066	106	393113	48.347	ug/L	99
54) o-Xyl ene	9.471	106	375986	47.364	ug/L	98
55) Styrene	9.490	104	689791	49.915	ug/L	99
57) 1,1,2,2-Tetrachl oroethane	10.172	83	317016	48.982	ug/L	100
59) Bromoform	9.657	173	156290	47.323	ug/L	98
60) Isopropyl benzene	9.860	105	1024371	46.629	ug/L	100
61) 1,2,3-Tri chl oropropane	10.204	75	230462	47.931	ug/L	100
62) 1,3,5-Tri methyl benzene	10.468	105	803420	46.257	ug/L	100
63) 1,2,4-Tri methyl benzene	10.844	105	799114	46.242	ug/L	99
64) 1,3-Di chl orobenzene	11.111	146	493593	46.679	ug/L	100
65) 1,4-Di chl orobenzene	11.201	146	510834	46.394	ug/L	100
67) 1,2-Di chl orobenzene	11.570	146	485685	46.462	ug/L	99
68) 1,2-Di bromo-3-chl oropr...	12.355	75	51861	44.433	ug/L	98
69) 1,3,5-Tri chl orobenzene	12.574	180	318602	43.814	ug/L	100
70) 1,2,4-tri chl orobenzene	13.191	180	283750	42.058	ug/L	99
71) Naphthal ene	13.432	128	751749	42.648	ug/L	100
72) 1,2,3-Tri chl orobenzene	13.673	180	287589	43.166	ug/L	99

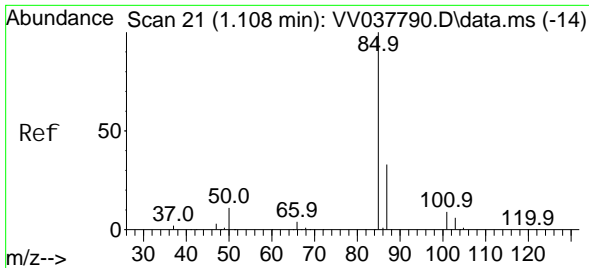
(#) = qualifier out of range (m) = manual integration (+) = signals summed

Data Path : Z:\voasrv\HPCHEM1\MSVOA\_V\DATA\VV101024\  
 Data File : VV037810.D  
 Acq On : 10 Oct 2024 16:51  
 Operator : SY/MD  
 Sample : P4379-07  
 Misc : 5mL/MSVOA\_V/WATER  
 ALS Vial : 1 Sample Multiplier: 1

Instrument :  
 MSVOA\_V  
 ClientSampleId :

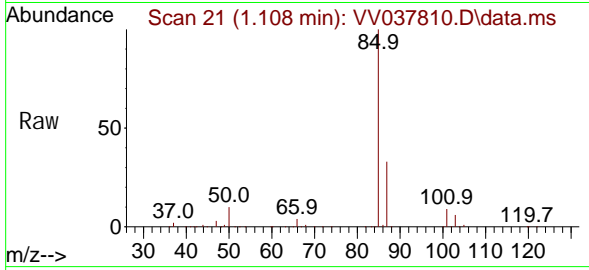
Quant Time: Oct 11 05:15:28 2024  
 Quant Method : Z:\voasrv\HPCHEM1\MSVOA\_V\Method\SFAMVLM092624WMA.M  
 Quant Title : VOC Analysis  
 QLast Update : Fri Oct 11 05:10:27 2024  
 Response via : Initial Calibration



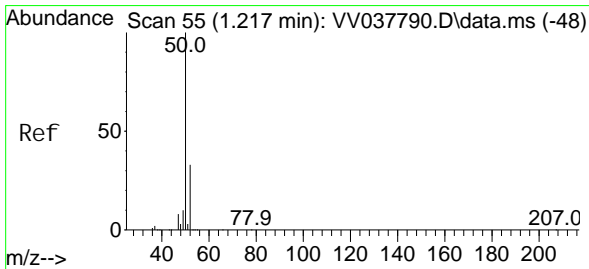
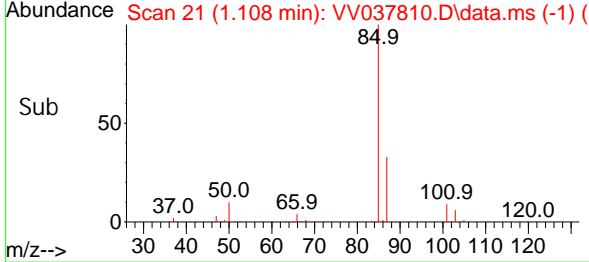
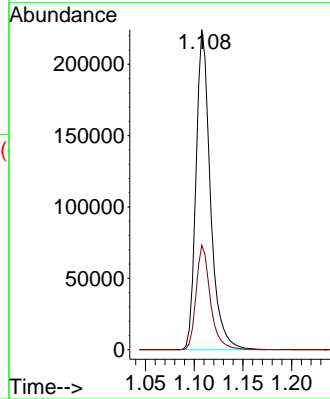


#2  
 Di chlorodi fluoromethane  
 Concen: 43.109 ug/L  
 RT: 1.108 min Scan# 21  
 Delta R.T. 0.000 min  
 Lab File: VV037810.D  
 Acq: 10 Oct 2024 16:51

Instrument :  
 MSVOA\_V  
 ClientSampleId :

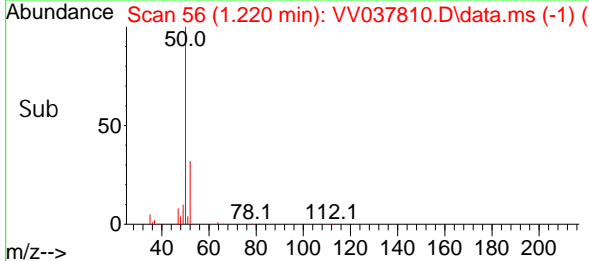
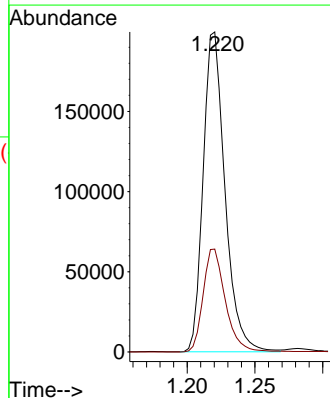
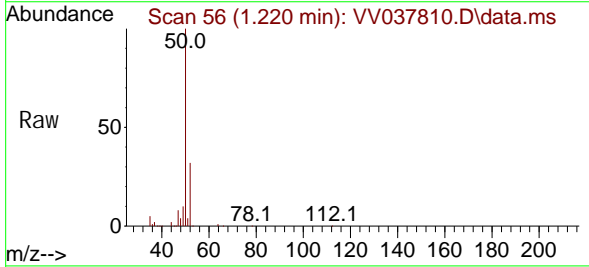


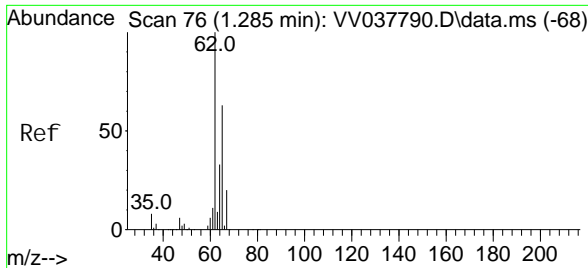
Tgt Ion: 85 Resp: 229580  
 Ion Ratio Lower Upper  
 85 100  
 87 32.3 25.8 38.8



#3  
 Chloromethane  
 Concen: 43.160 ug/L  
 RT: 1.220 min Scan# 56  
 Delta R.T. 0.003 min  
 Lab File: VV037810.D  
 Acq: 10 Oct 2024 16:51

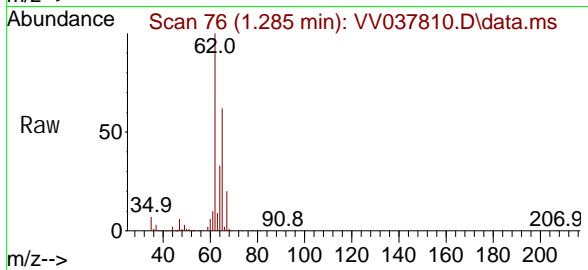
Tgt Ion: 50 Resp: 223145  
 Ion Ratio Lower Upper  
 50 100  
 52 32.2 23.2 43.2



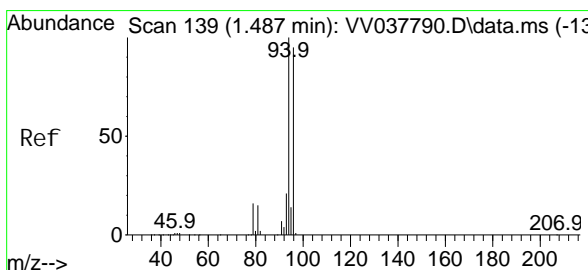
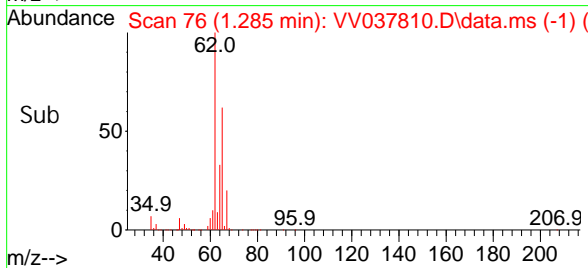
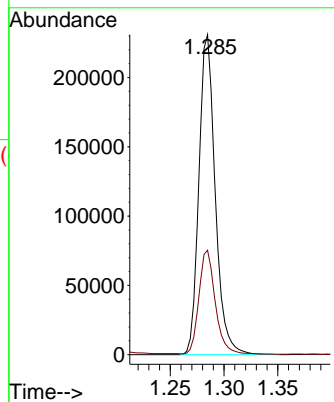


#5  
 Vinyl chloride  
 Concen: 43.923 ug/L  
 RT: 1.285 min Scan# 70  
 Delta R.T. 0.000 min  
 Lab File: VV037810.D  
 Acq: 10 Oct 2024 16:51

Instrument :  
 MSVOA\_V  
 ClientSampleId :

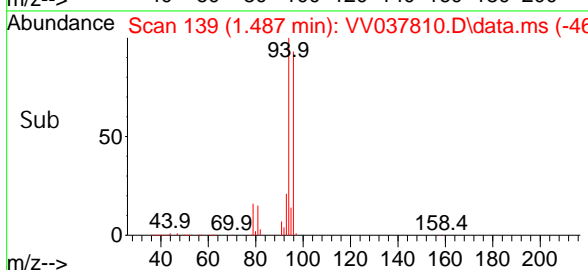
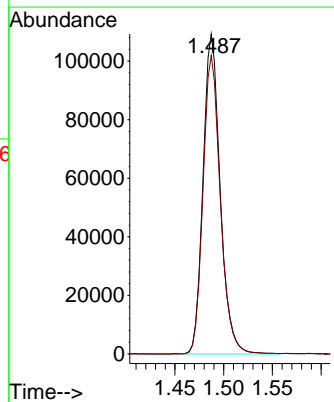
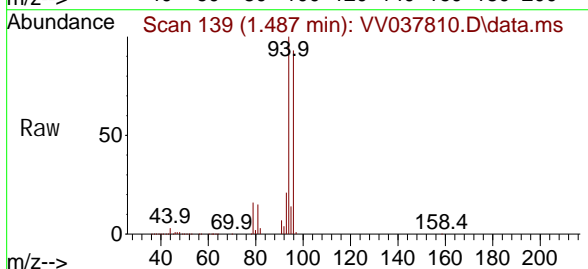


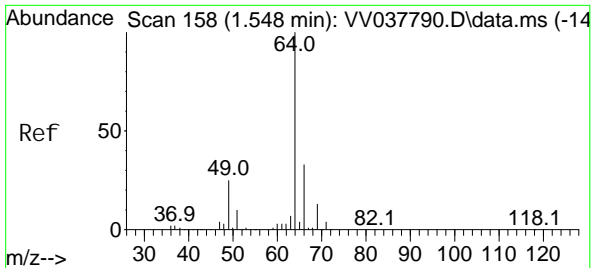
Tgt Ion: 62 Resp: 243460  
 Ion Ratio Lower Upper  
 62 100  
 64 32.7 23.2 43.0



#6  
 Bromomethane  
 Concen: 43.361 ug/L  
 RT: 1.487 min Scan# 139  
 Delta R.T. 0.000 min  
 Lab File: VV037810.D  
 Acq: 10 Oct 2024 16:51

Tgt Ion: 94 Resp: 133382  
 Ion Ratio Lower Upper  
 94 100  
 96 93.2 65.8 122.2

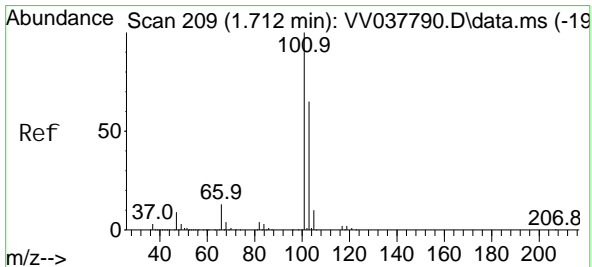
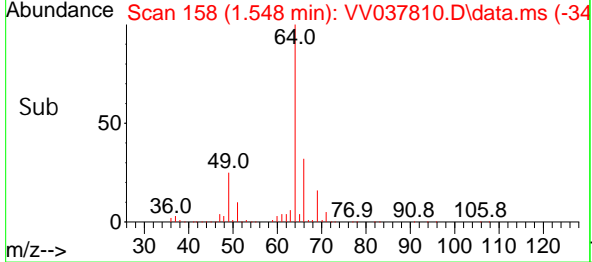
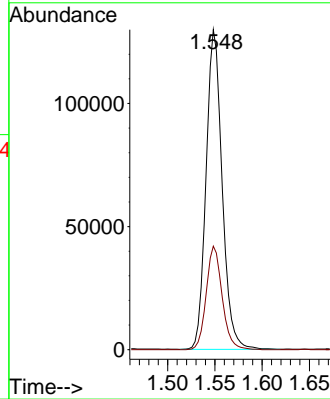
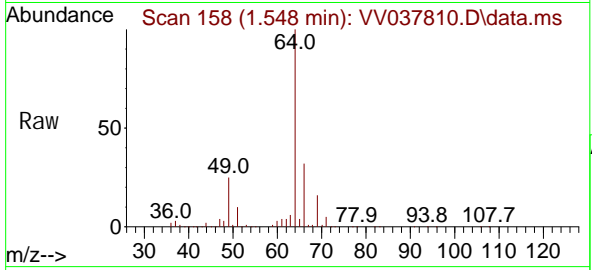




#8  
 Chloroethane  
 Concen: 44.866 ug/L  
 RT: 1.548 min Scan# 158  
 Delta R.T. 0.000 min  
 Lab File: VV037810.D  
 Acq: 10 Oct 2024 16:51

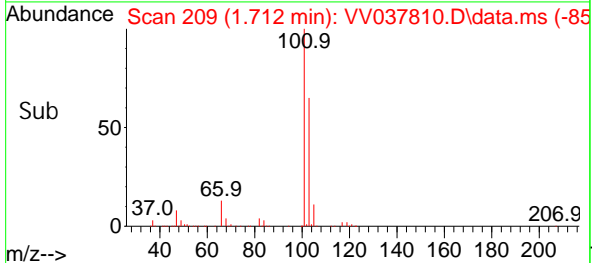
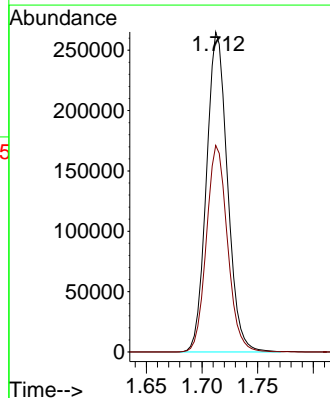
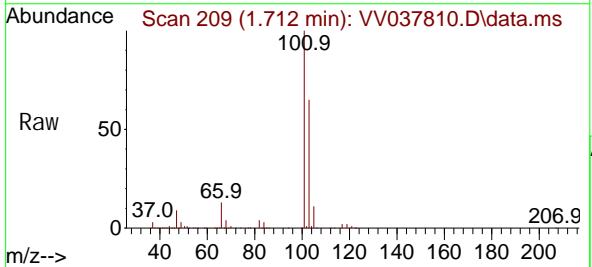
Instrument : MSVOA\_V  
 ClientSampleId :

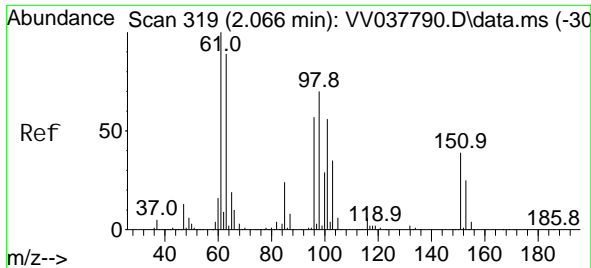
Tgt Ion: 64 Resp: 153279  
 Ion Ratio Lower Upper  
 64 100  
 66 32.4 22.2 41.2



#9  
 Trichlorofluoromethane  
 Concen: 46.696 ug/L  
 RT: 1.712 min Scan# 209  
 Delta R.T. 0.000 min  
 Lab File: VV037810.D  
 Acq: 10 Oct 2024 16:51

Tgt Ion: 101 Resp: 348404  
 Ion Ratio Lower Upper  
 101 100  
 103 64.8 52.2 78.4

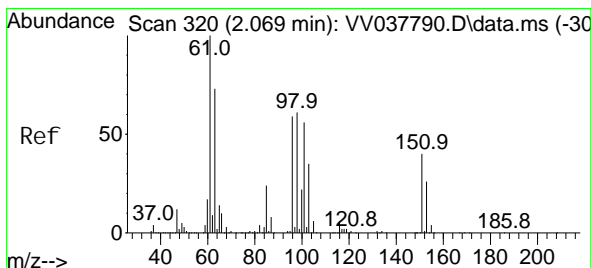
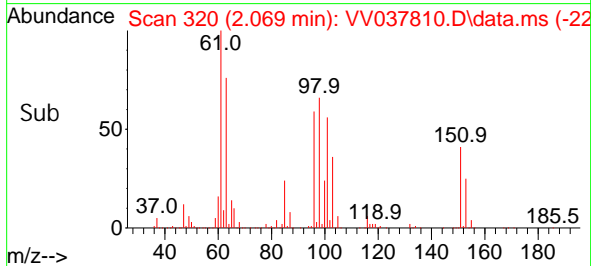
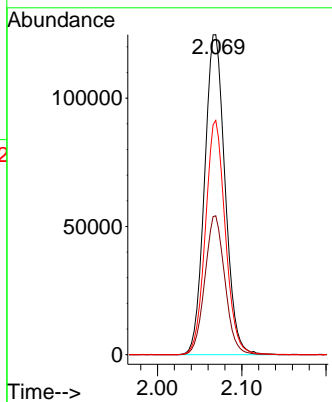
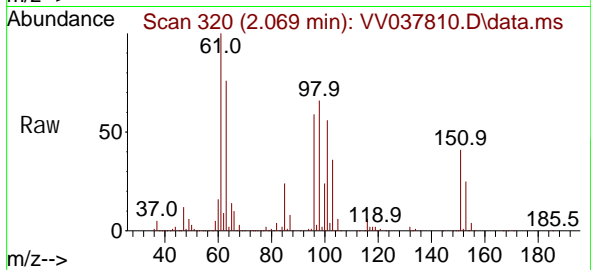




#10  
 1, 1, 2-Tri chloro-1, 2, 2-tri fluoroethane  
 Concen: 47.398 ug/L  
 RT: 2.069 min Scan# 319  
 Delta R.T. 0.003 min  
 Lab File: VV037810.D  
 Acq: 10 Oct 2024 16:51

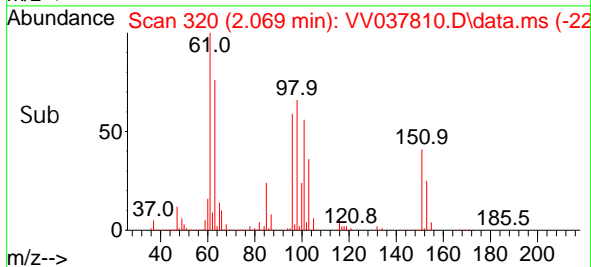
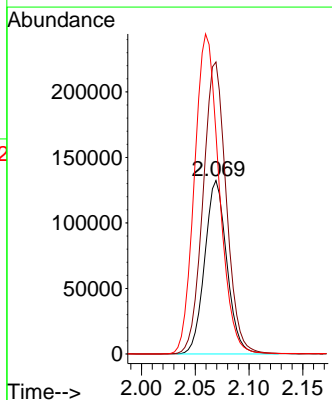
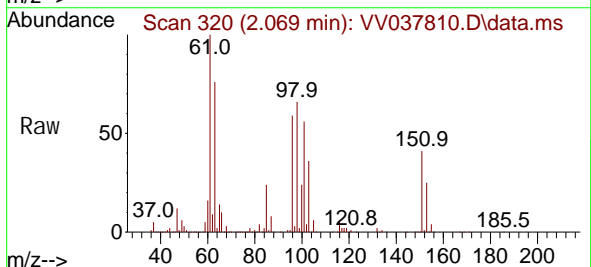
Instrument : MSVOA\_V  
 ClientSampleId :

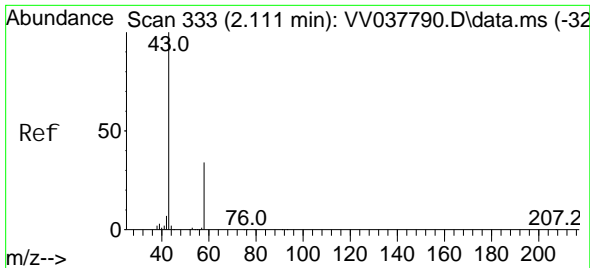
Tgt Ion: 101 Resp: 211325  
 Ion Ratio Lower Upper  
 101 100  
 85 42.6 34.6 52.0  
 151 71.2 57.5 86.3



#12  
 1, 1-Di chloroethene  
 Concen: 45.536 ug/L  
 RT: 2.069 min Scan# 320  
 Delta R.T. 0.000 min  
 Lab File: VV037810.D  
 Acq: 10 Oct 2024 16:51

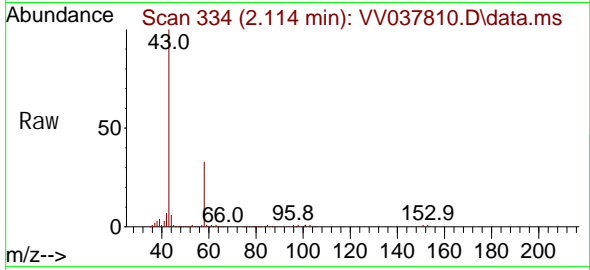
Tgt Ion: 96 Resp: 189646  
 Ion Ratio Lower Upper  
 96 100  
 61 168.4 122.6 227.6  
 63 127.3 118.0 219.2



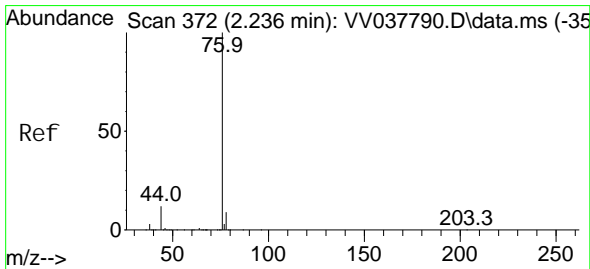
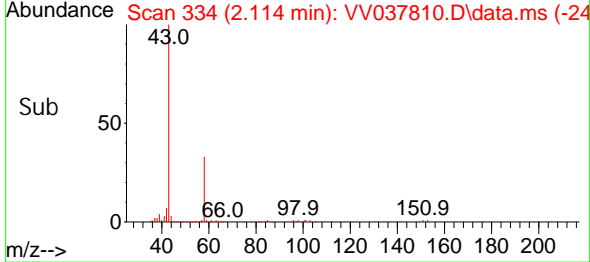
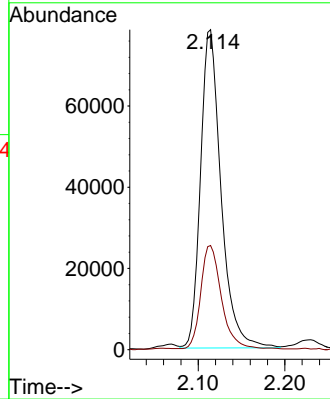


#13  
 Acetone  
 Concen: 67.276 ug/L  
 RT: 2.114 min Scan# 311  
 Delta R.T. 0.003 min  
 Lab File: VV037810.D  
 Acq: 10 Oct 2024 16:51

Instrument : MSVOA\_V  
 ClientSampleId :

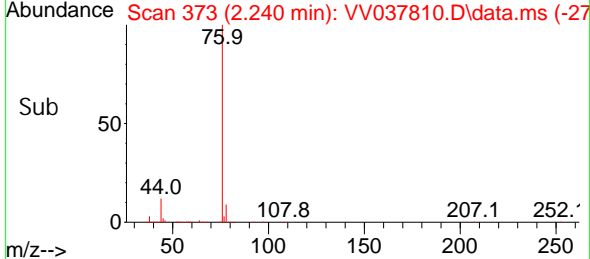
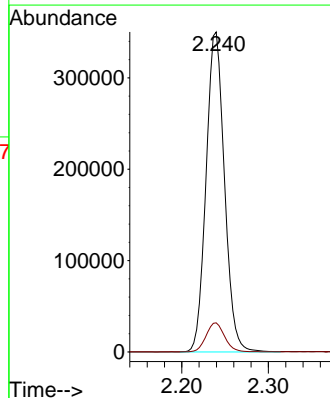
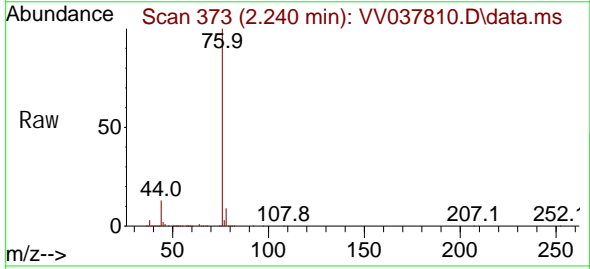


Tgt Ion: 43 Resp: 128999  
 Ion Ratio Lower Upper  
 43 100  
 58 32.4 0.0 66.6

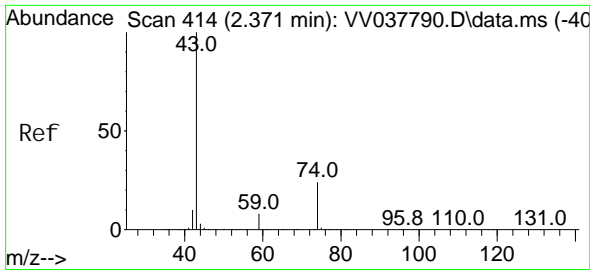


#14  
 Carbon di sul fi de  
 Concen: 39.760 ug/L  
 RT: 2.240 min Scan# 373  
 Delta R.T. 0.003 min  
 Lab File: VV037810.D  
 Acq: 10 Oct 2024 16:51

Tgt Ion: 76 Resp: 516886  
 Ion Ratio Lower Upper  
 76 100  
 78 9.1 7.4 11.0

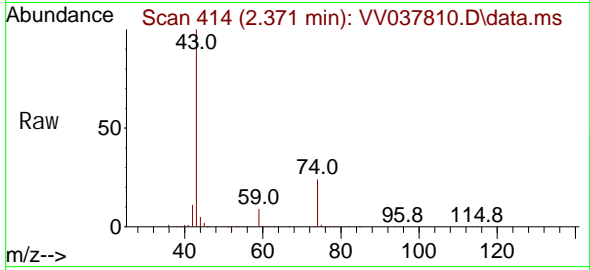




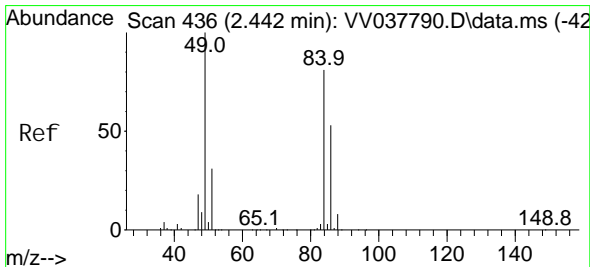
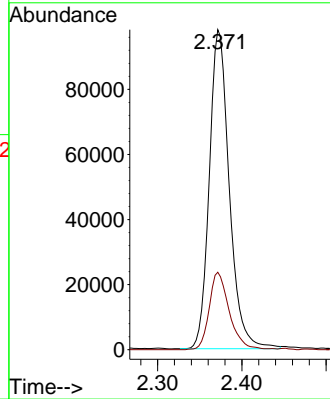
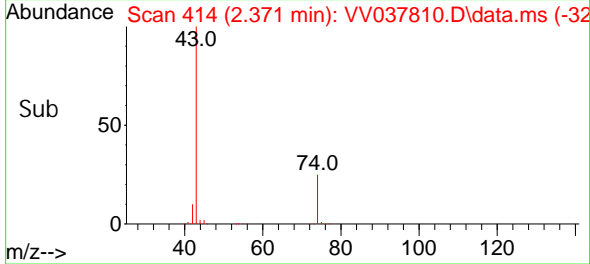


#15  
Methyl Acetate  
Concen: 48.379 ug/L  
RT: 2.371 min Scan# 414  
Delta R.T. 0.000 min  
Lab File: VV037810.D  
Acq: 10 Oct 2024 16:51

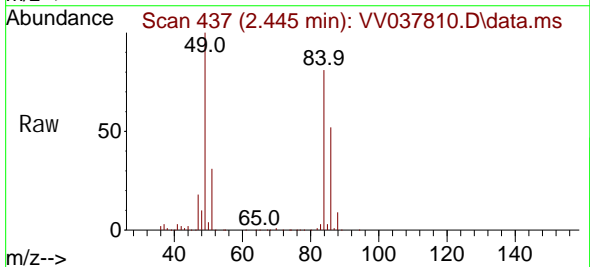
Instrument :  
MSVOA\_V  
ClientSampleId :



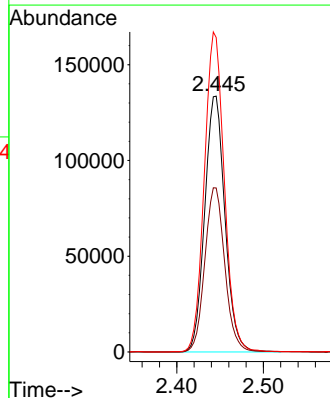
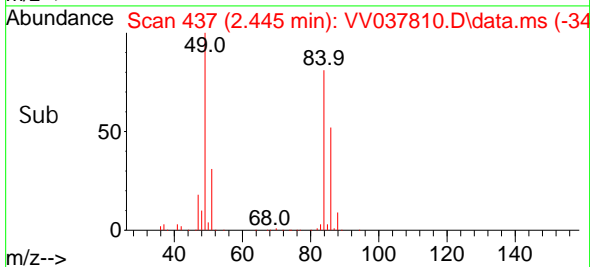
Tgt Ion: 43 Resp: 161886  
Ion Ratio Lower Upper  
43 100  
74 24.3 19.4 29.0

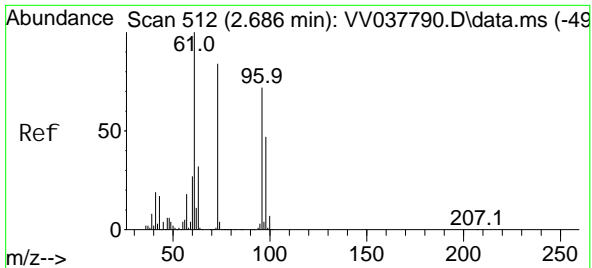


#16  
Methylene chloride  
Concen: 46.020 ug/L  
RT: 2.445 min Scan# 437  
Delta R.T. 0.003 min  
Lab File: VV037810.D  
Acq: 10 Oct 2024 16:51



Tgt Ion: 84 Resp: 217014  
Ion Ratio Lower Upper  
84 100  
86 64.1 46.4 86.2  
49 122.9 85.9 159.5

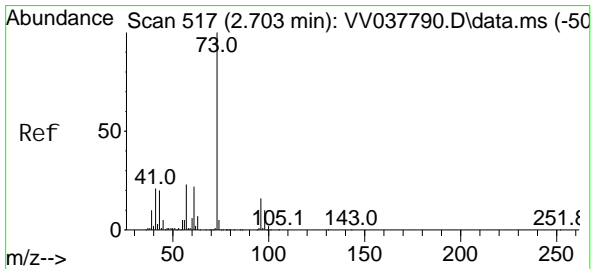
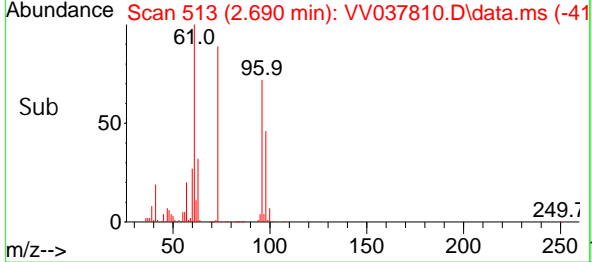
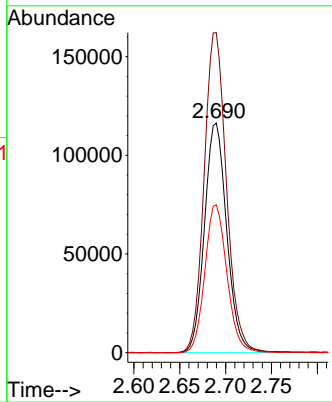
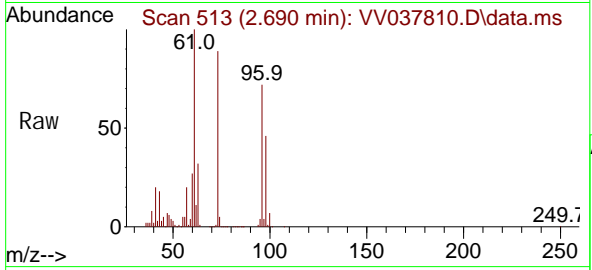




#17  
 trans-1, 2-Di chloroethene  
 Concen: 44.758 ug/L  
 RT: 2.690 min Scan# 513  
 Delta R.T. 0.003 min  
 Lab File: VV037810.D  
 Acq: 10 Oct 2024 16:51

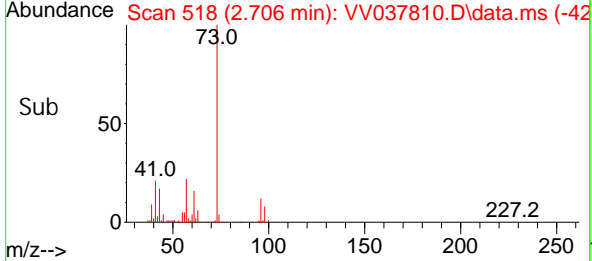
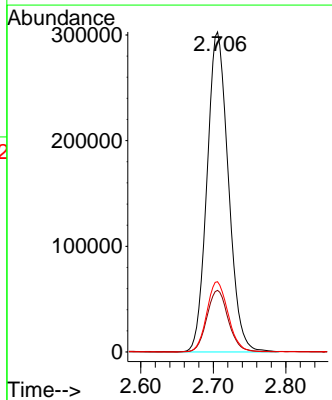
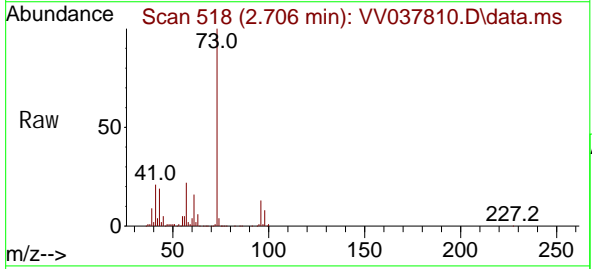
Instrument : MSVOA\_V  
 ClientSampleId :

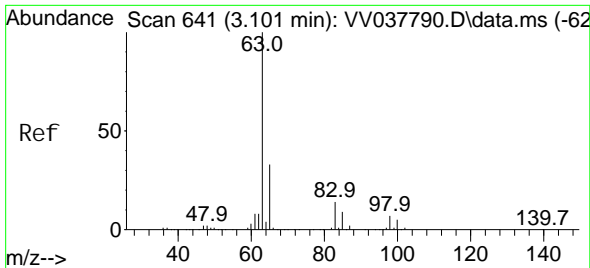
Tgt Ion	Resp	Lower	Upper
96	197198		
96	100		
61	139.4	97.3	180.7
98	64.4	43.9	81.5



#18  
 Methyl tert-butyl Ether  
 Concen: 48.930 ug/L  
 RT: 2.706 min Scan# 518  
 Delta R.T. 0.003 min  
 Lab File: VV037810.D  
 Acq: 10 Oct 2024 16:51

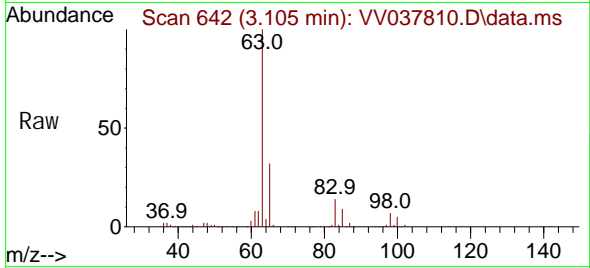
Tgt Ion	Resp	Lower	Upper
73	618500		
73	100		
43	19.2	15.1	22.7
57	22.1	17.4	26.2





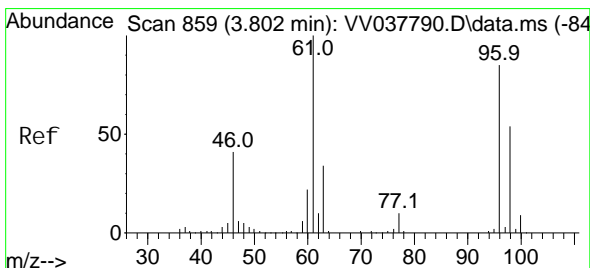
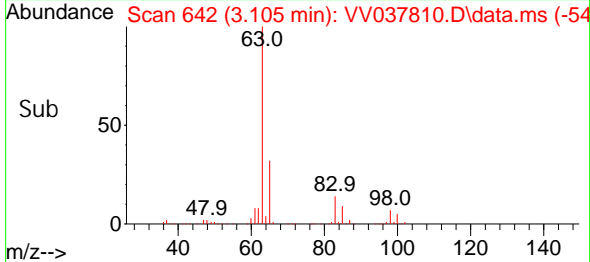
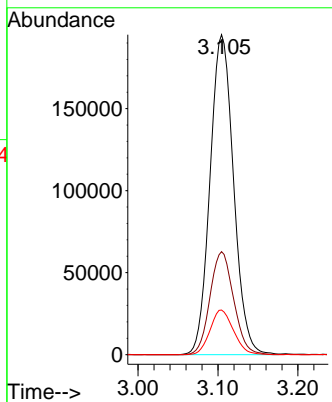
#19  
 1,1-Dichloroethane  
 Concen: 47.264 ug/L  
 RT: 3.105 min Scan# 641  
 Delta R.T. 0.003 min  
 Lab File: VV037810.D  
 Acq: 10 Oct 2024 16:51

Instrument : MSVOA\_V  
 ClientSampleId :



Tgt Ion: 63 Resp: 398978

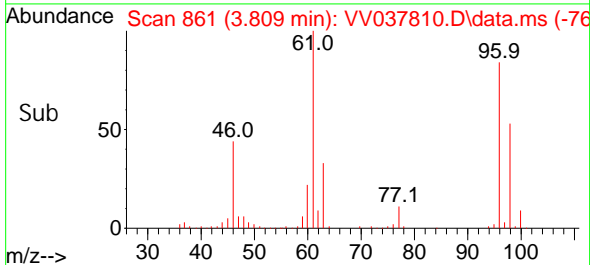
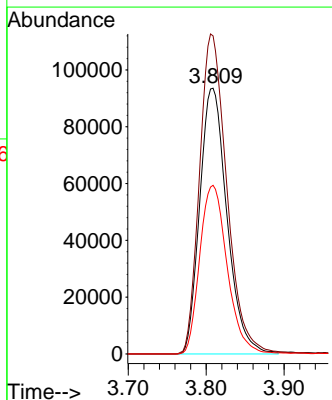
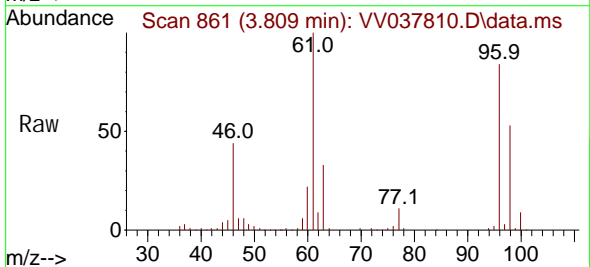
Ion	Ratio	Lower	Upper
63	100		
65	32.2	22.4	41.6
83	14.0	9.5	17.7

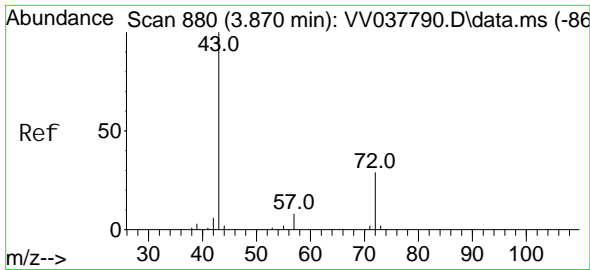


#20  
 cis-1,2-Dichloroethene  
 Concen: 46.149 ug/L  
 RT: 3.809 min Scan# 861  
 Delta R.T. 0.007 min  
 Lab File: VV037810.D  
 Acq: 10 Oct 2024 16:51

Tgt Ion: 96 Resp: 227536

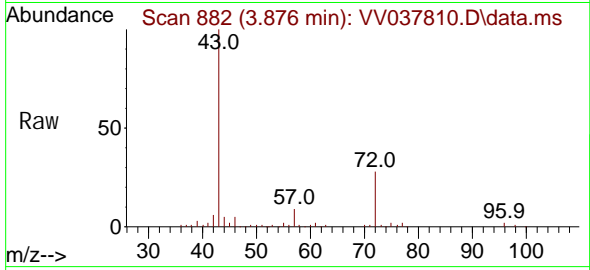
Ion	Ratio	Lower	Upper
96	100		
61	119.7	85.0	157.8
98	63.5	44.2	82.0



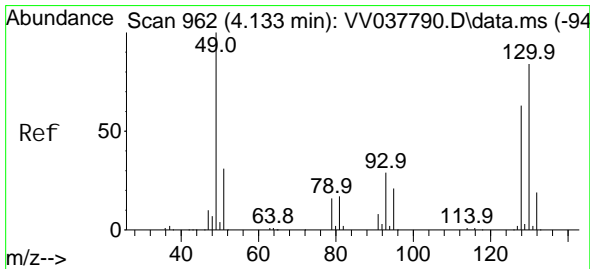
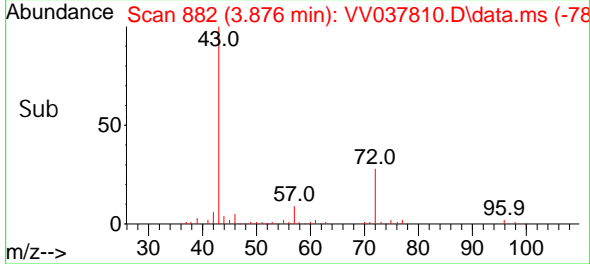
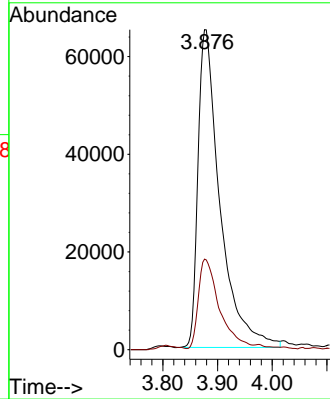


#22  
 2-Butanone  
 Concen: 85.637 ug/L  
 RT: 3.876 min Scan# 880  
 Delta R.T. 0.007 min  
 Lab File: VV037810.D  
 Acq: 10 Oct 2024 16:51

Instrument : MSVOA\_V  
 ClientSampleId :

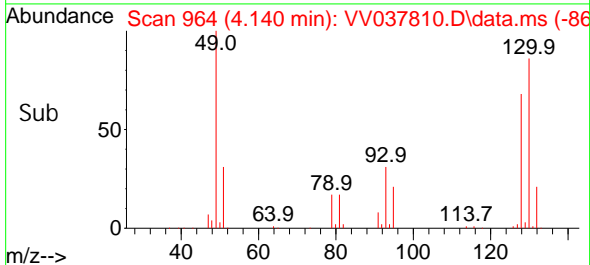
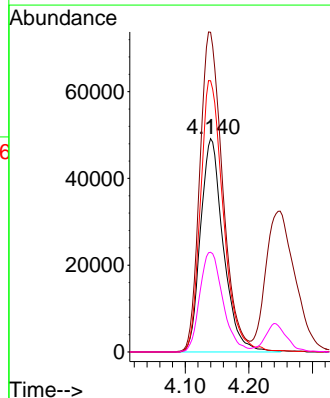
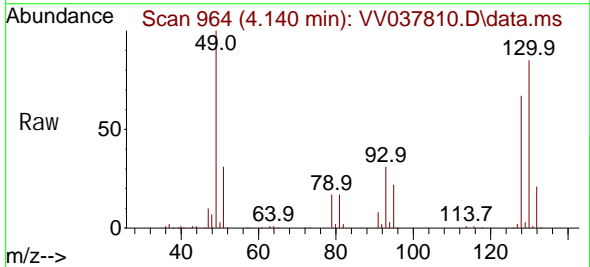


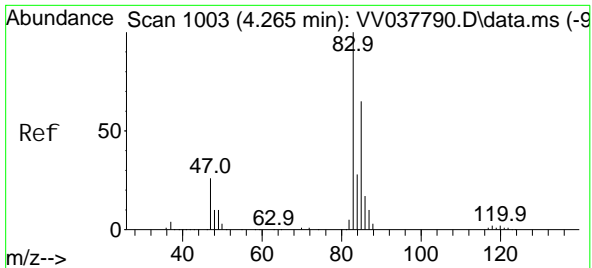
Tgt Ion: 43 Resp: 181748  
 Ion Ratio Lower Upper  
 43 100  
 72 26.8 14.3 42.9



#23  
 Bromochloromethane  
 Concen: 47.877 ug/L  
 RT: 4.140 min Scan# 964  
 Delta R.T. 0.007 min  
 Lab File: VV037810.D  
 Acq: 10 Oct 2024 16:51

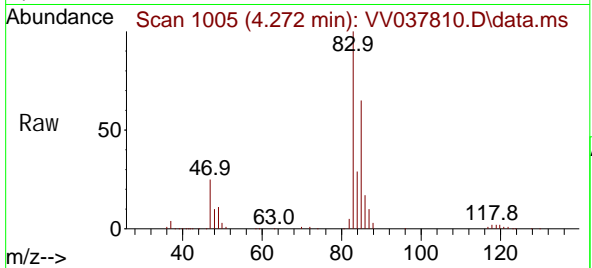
Tgt Ion: 128 Resp: 122107  
 Ion Ratio Lower Upper  
 128 100  
 49 149.9 108.7 201.9  
 130 127.2 90.4 168.0  
 51 46.7 39.2 58.8



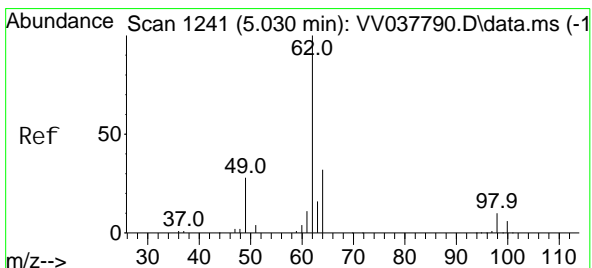
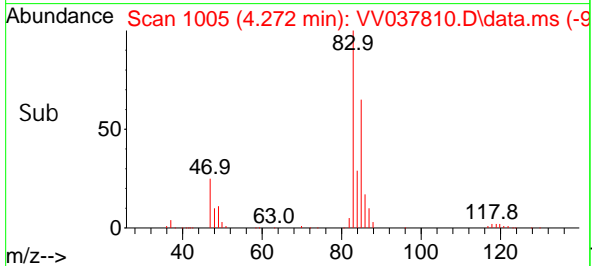
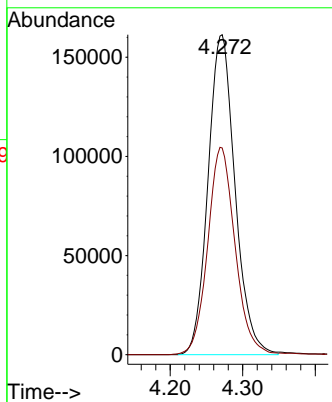


#25  
 Chloroform  
 Concen: 47.850 ug/L  
 RT: 4.272 min Scan# 1005  
 Delta R.T. 0.007 min  
 Lab File: VV037810.D  
 Acq: 10 Oct 2024 16:51

Instrument : MSVOA\_V  
 ClientSampleId :

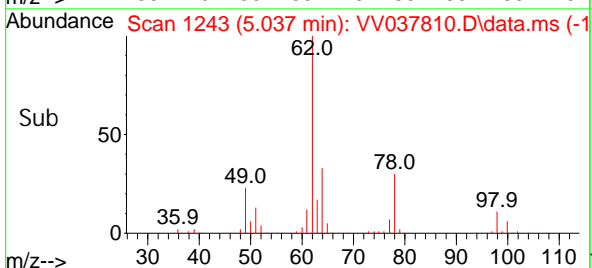
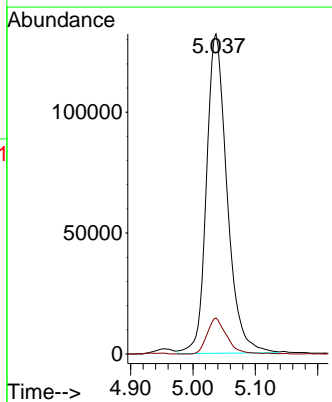
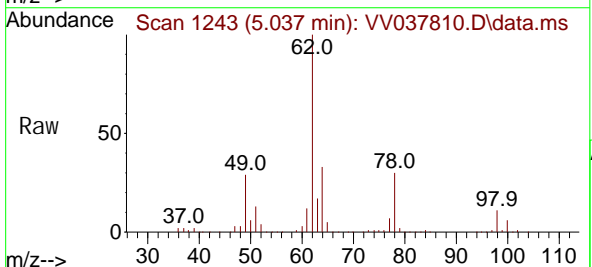


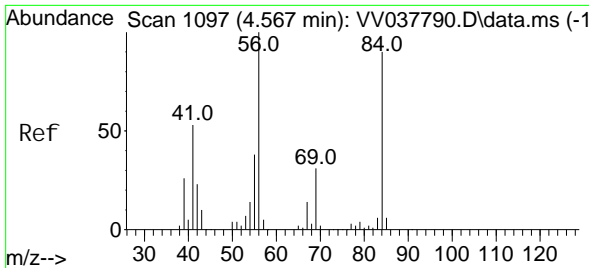
Tgt Ion: 83 Resp: 418215  
 Ion Ratio Lower Upper  
 83 100  
 85 64.6 45.1 83.7



#27  
 1,2-Di chloroethane  
 Concen: 49.212 ug/L  
 RT: 5.037 min Scan# 1243  
 Delta R.T. 0.007 min  
 Lab File: VV037810.D  
 Acq: 10 Oct 2024 16:51

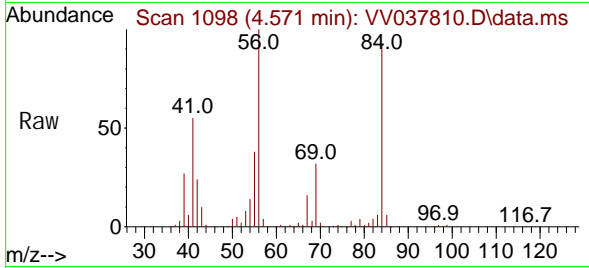
Tgt Ion: 62 Resp: 303644  
 Ion Ratio Lower Upper  
 62 100  
 98 11.2 8.4 12.6



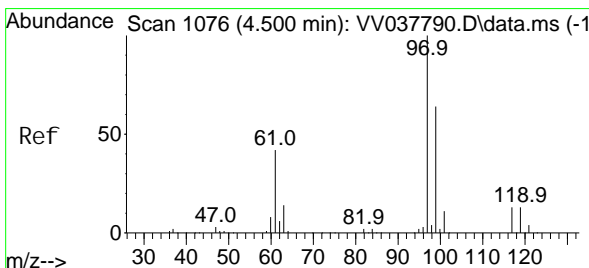
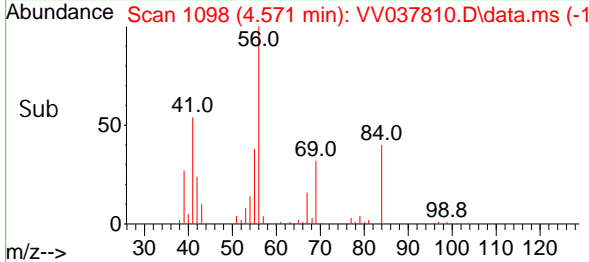
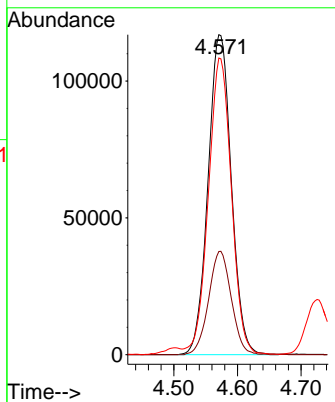


#29  
 Cycl ohexane  
 Concen: 42.150 ug/L  
 RT: 4.571 min Scan# 1098  
 Delta R.T. 0.003 min  
 Lab File: VV037810.D  
 Acq: 10 Oct 2024 16:51

Instrument :  
 MSVOA\_V  
 ClientSampleId :

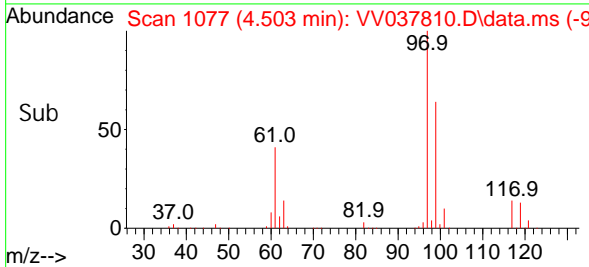
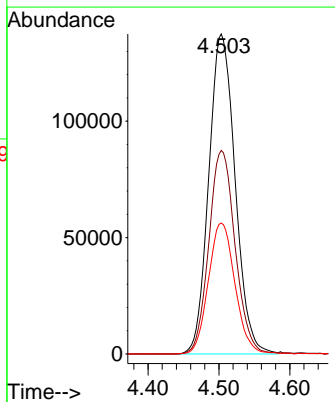
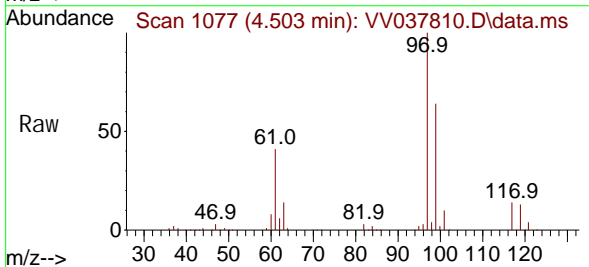


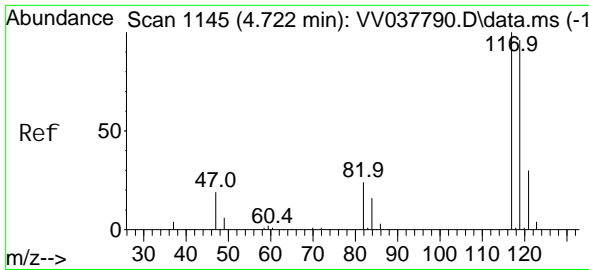
Tgt Ion: 56 Resp: 297088  
 Ion Ratio Lower Upper  
 56 100  
 69 31.4 24.7 37.1  
 84 91.5 73.4 110.0



#30  
 1,1,1-Tri chloroethane  
 Concen: 46.494 ug/L  
 RT: 4.503 min Scan# 1077  
 Delta R.T. 0.003 min  
 Lab File: VV037810.D  
 Acq: 10 Oct 2024 16:51

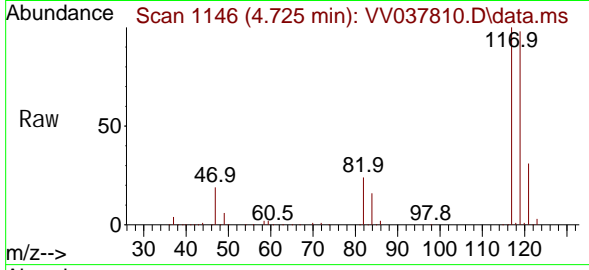
Tgt Ion: 97 Resp: 355475  
 Ion Ratio Lower Upper  
 97 100  
 99 63.4 51.8 77.6  
 61 41.3 33.6 50.4



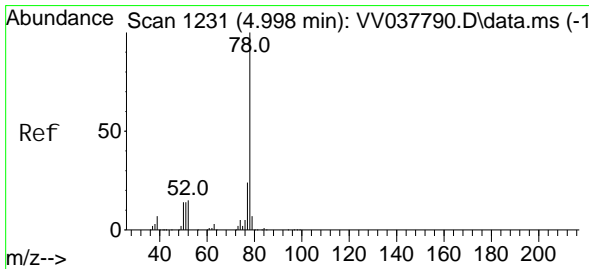
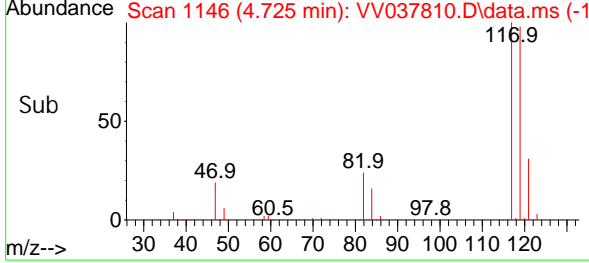
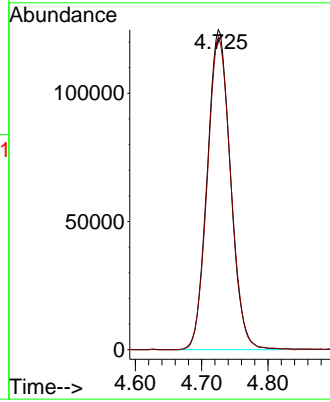


#31  
 Carbon tetrachloride  
 Concen: 45.750 ug/L  
 RT: 4.725 min Scan# 1146  
 Delta R.T. 0.003 min  
 Lab File: VV037810.D  
 Acq: 10 Oct 2024 16:51

Instrument : MSVOA\_V  
 ClientSampleId :

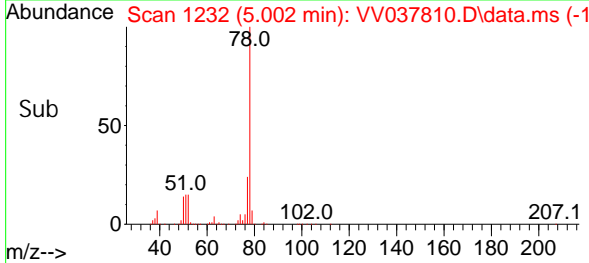
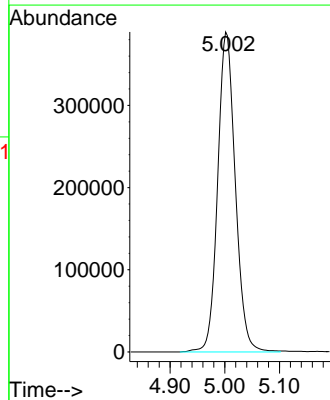
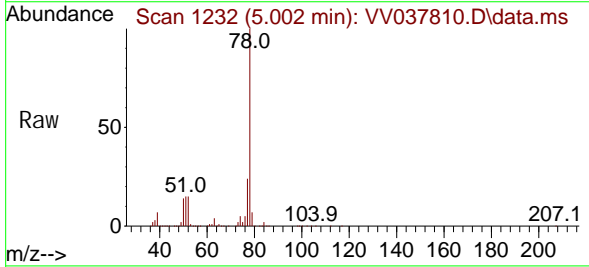


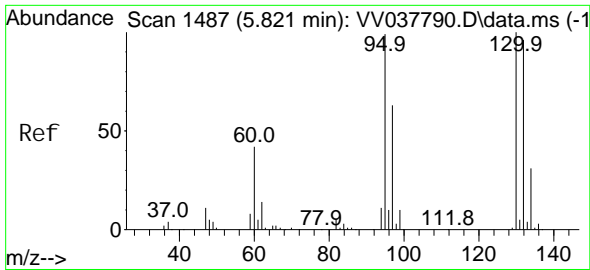
Tgt Ion: 117 Resp: 304109  
 Ion Ratio Lower Upper  
 117 100  
 119 98.3 76.9 115.3



#33  
 Benzene  
 Concen: 46.496 ug/L  
 RT: 5.002 min Scan# 1232  
 Delta R.T. 0.003 min  
 Lab File: VV037810.D  
 Acq: 10 Oct 2024 16:51

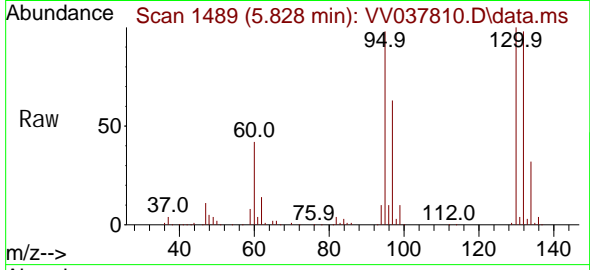
Tgt Ion: 78 Resp: 870504



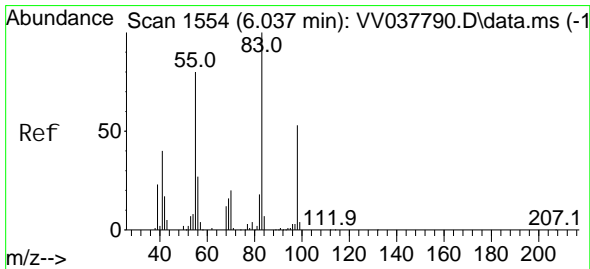
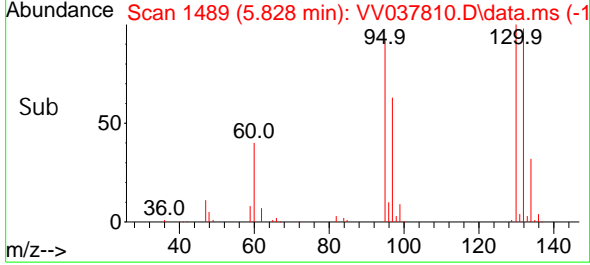
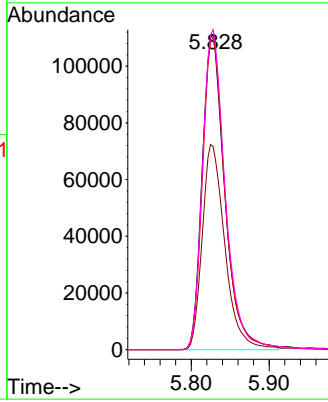


#34  
 Trichloroethene  
 Concen: 44.868 ug/L  
 RT: 5.828 min Scan# 1489  
 Delta R.T. 0.007 min  
 Lab File: VV037810.D  
 Acq: 10 Oct 2024 16:51

Instrument :  
 MSVOA\_V  
 ClientSampleId :

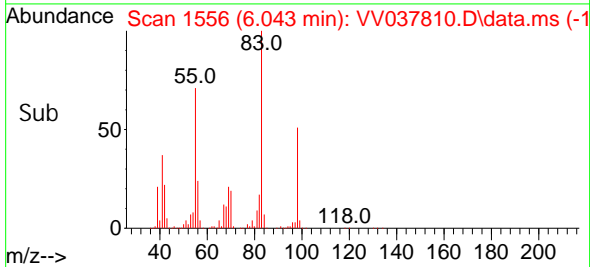
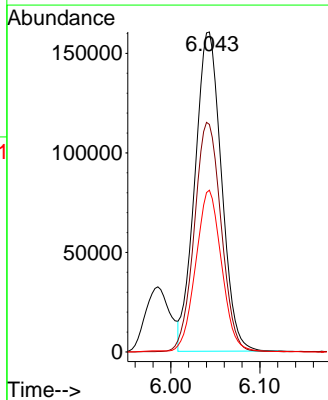
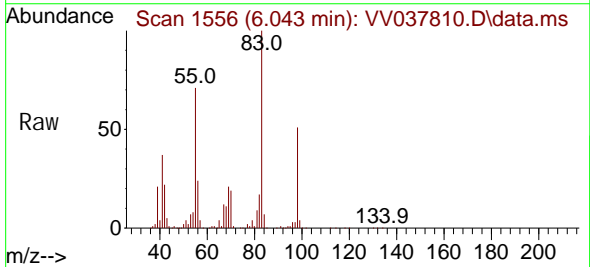


Tgt Ion: 95 Resp: 223708  
 Ion Ratio Lower Upper  
 95 100  
 97 64.5 46.3 85.9  
 132 99.2 68.6 127.4  
 130 101.7 70.9 131.7

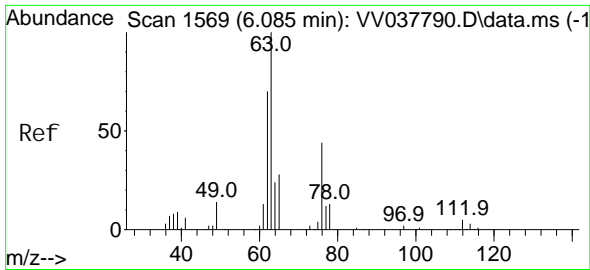


#35  
 Methyl cycl ohexane  
 Concen: 43.300 ug/L  
 RT: 6.043 min Scan# 1556  
 Delta R.T. 0.007 min  
 Lab File: VV037810.D  
 Acq: 10 Oct 2024 16:51

Tgt Ion: 83 Resp: 332118  
 Ion Ratio Lower Upper  
 83 100  
 55 72.6 57.9 86.9  
 98 49.4 39.3 58.9



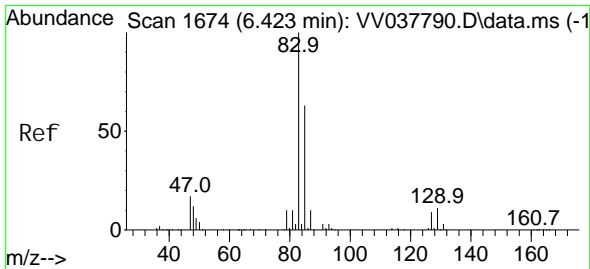
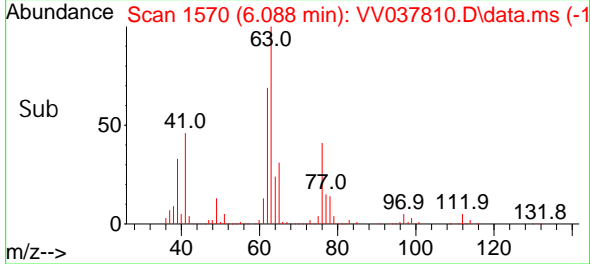
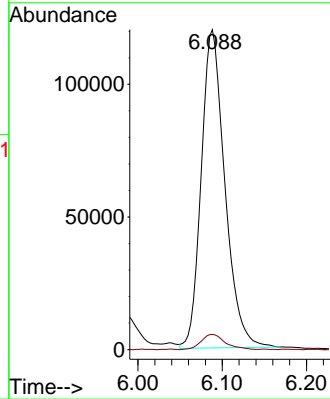
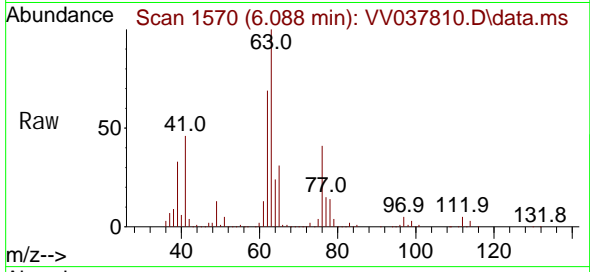




#37  
 1, 2-Di chl oropropane  
 Concen: 48.456 ug/L  
 RT: 6.088 min Scan# 1569  
 Delta R.T. 0.003 min  
 Lab File: VV037810.D  
 Acq: 10 Oct 2024 16:51

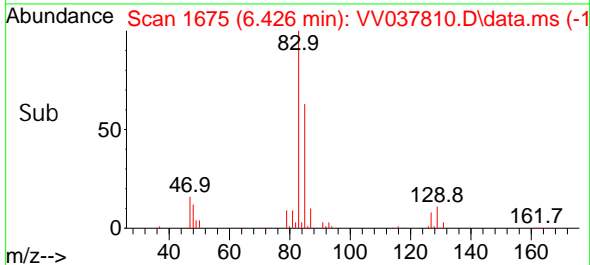
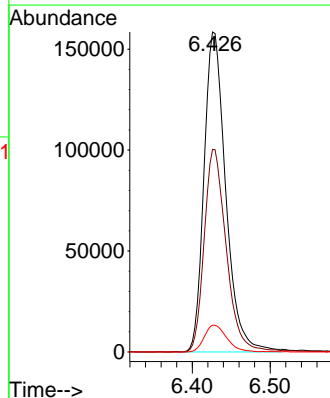
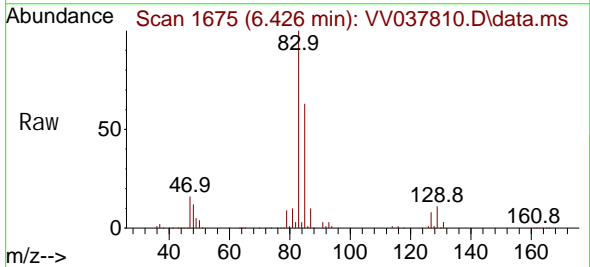
Instrument :  
 MSVOA\_V  
 ClientSampleId :

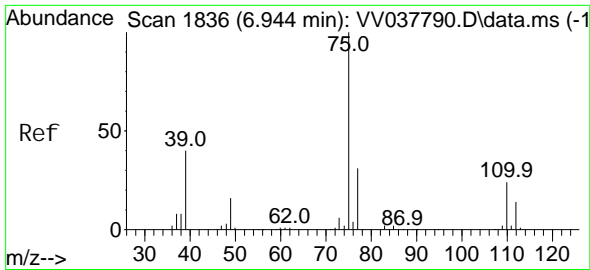
Tgt Ion: 63 Resp: 234264  
 Ion Ratio Lower Upper  
 63 100  
 112 4.9 3.5 5.3



#38  
 Bromodi chl oromethane  
 Concen: 47.575 ug/L  
 RT: 6.426 min Scan# 1675  
 Delta R.T. 0.003 min  
 Lab File: VV037810.D  
 Acq: 10 Oct 2024 16:51

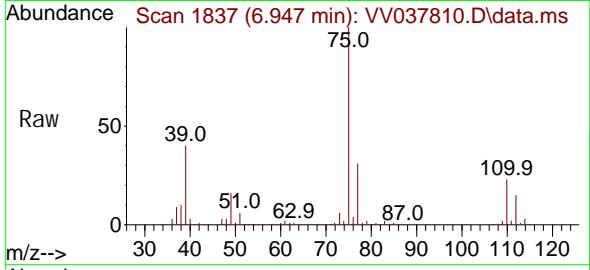
Tgt Ion: 83 Resp: 307465  
 Ion Ratio Lower Upper  
 83 100  
 85 63.3 45.7 84.9  
 127 8.3 7.0 10.4



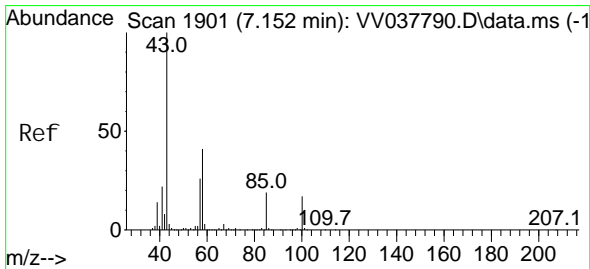
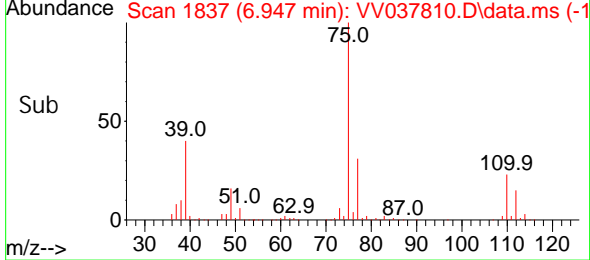
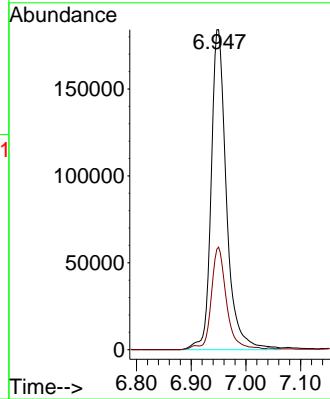


#39  
 cis-1,3-Dichloropropene  
 Concen: 46.556 ug/L  
 RT: 6.947 min Scan# 1837  
 Delta R.T. 0.003 min  
 Lab File: VV037810.D  
 Acq: 10 Oct 2024 16:51

Instrument : MSVOA\_V  
 ClientSampleId :

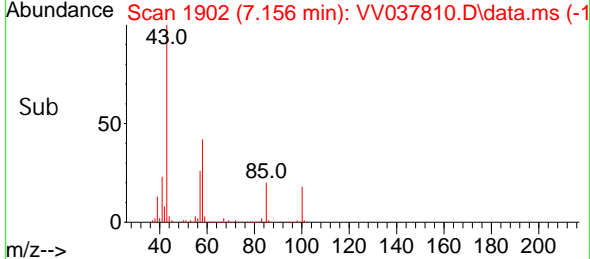
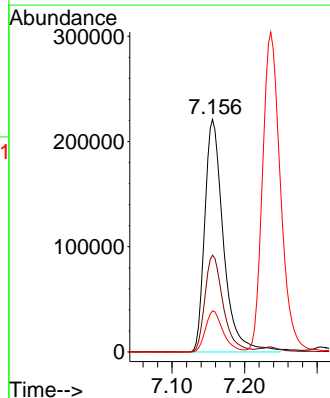
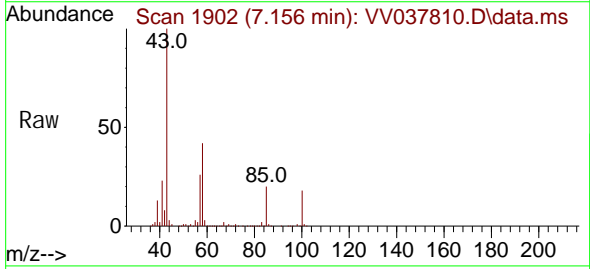


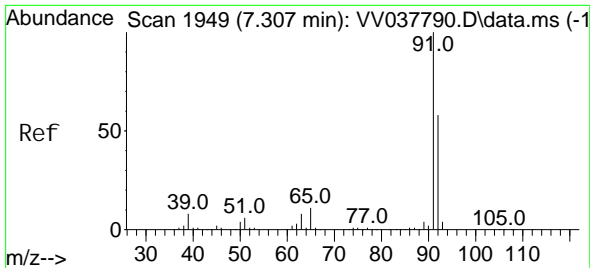
Tgt Ion: 75 Resp: 359285  
 Ion Ratio Lower Upper  
 75 100  
 77 31.4 21.8 40.4



#40  
 4-Methyl-2-pentanone  
 Concen: 100.689 ug/L  
 RT: 7.156 min Scan# 1902  
 Delta R.T. 0.003 min  
 Lab File: VV037810.D  
 Acq: 10 Oct 2024 16:51

Tgt Ion: 43 Resp: 396346  
 Ion Ratio Lower Upper  
 43 100  
 58 40.8 33.0 49.4  
 100 16.6 13.7 20.5

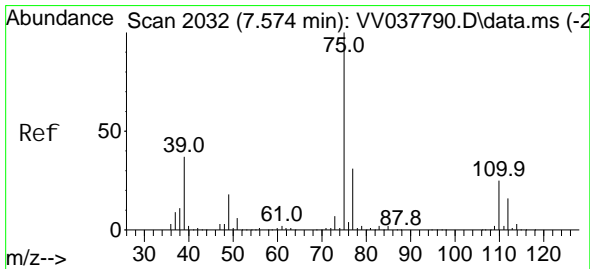
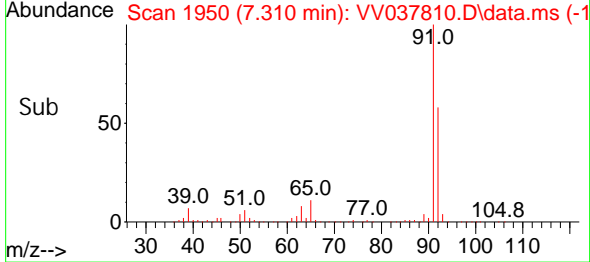
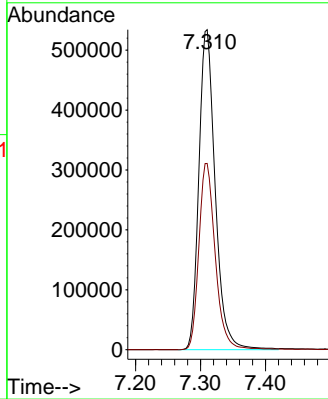
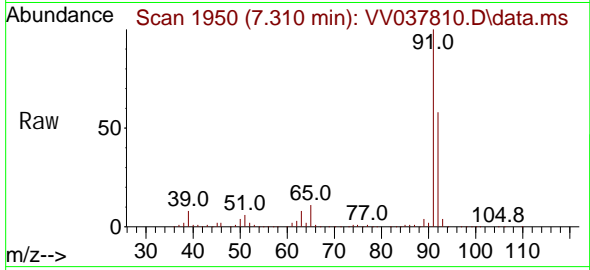




#42  
 Tol uene  
 Concen: 48.259 ug/L  
 RT: 7.310 min Scan# 1949  
 Delta R.T. 0.003 min  
 Lab File: VV037810.D  
 Acq: 10 Oct 2024 16:51

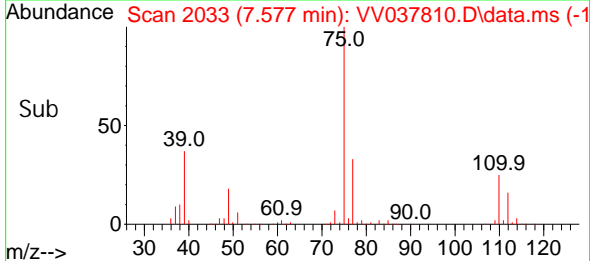
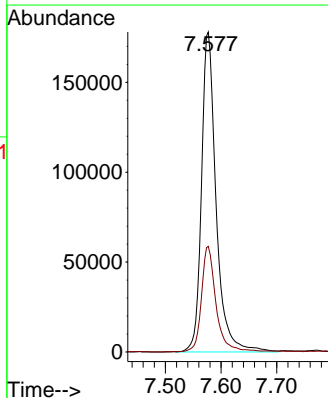
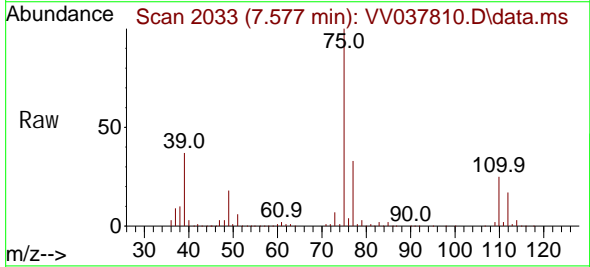
Instrument : MSVOA\_V  
 ClientSampleId :

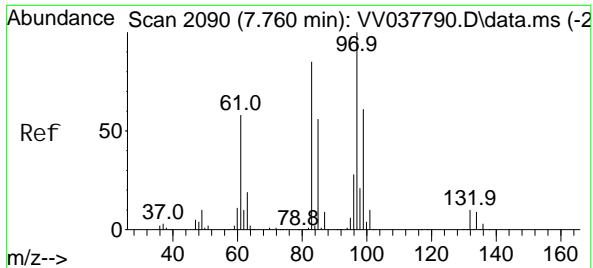
Tgt Ion: 91 Resp: 936657  
 Ion Ratio Lower Upper  
 91 100  
 92 58.2 41.1 76.3



#44  
 trans-1, 3-Di chl oroprene  
 Concen: 46.784 ug/L  
 RT: 7.577 min Scan# 2033  
 Delta R.T. 0.003 min  
 Lab File: VV037810.D  
 Acq: 10 Oct 2024 16:51

Tgt Ion: 75 Resp: 325051  
 Ion Ratio Lower Upper  
 75 100  
 77 33.0 21.9 40.7



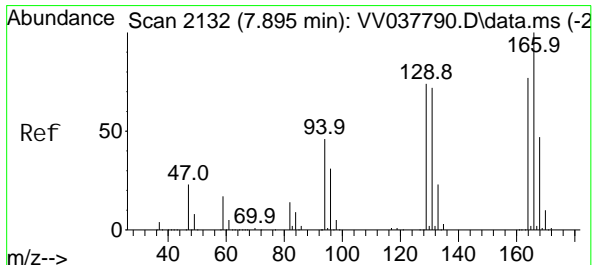
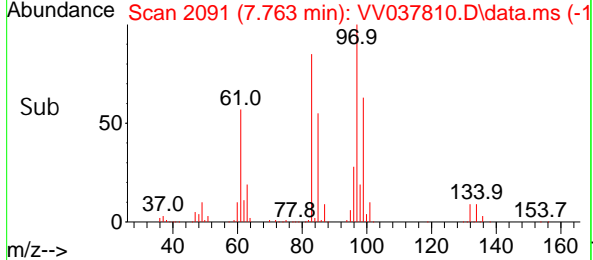
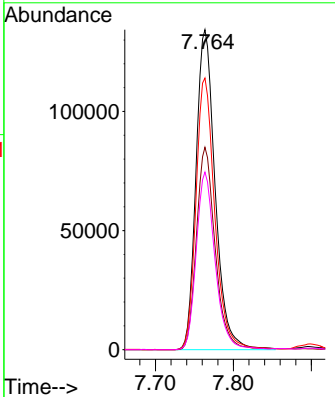
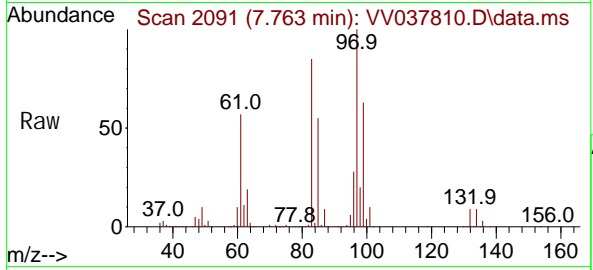


#45  
 1,1,2-Tri chloroethane  
 Concen: 49.435 ug/L  
 RT: 7.763 min Scan# 2091  
 Delta R.T. 0.003 min  
 Lab File: VV037810.D  
 Acq: 10 Oct 2024 16:51

Instrument : MSVOA\_V  
 ClientSampleId :

Tgt Ion: 97 Resp: 229483

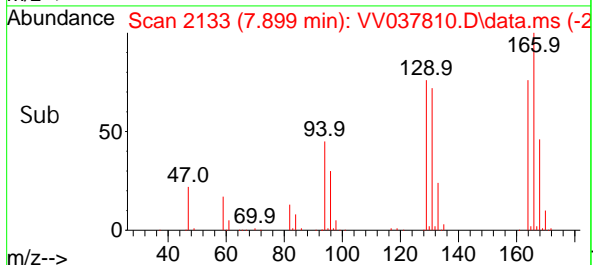
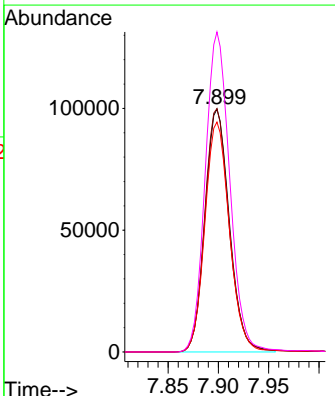
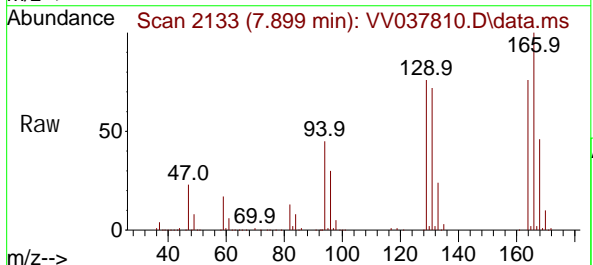
Ion	Ratio	Lower	Upper
97	100		
99	63.3	44.1	81.9
83	84.9	59.3	110.1
85	55.5	39.0	72.4

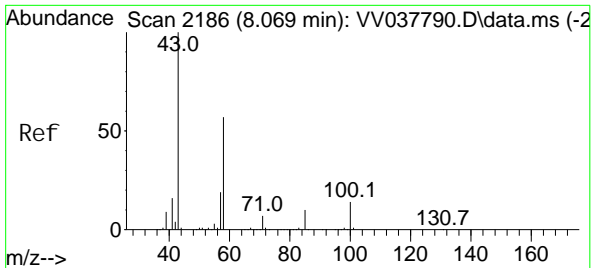


#46  
 Tetrachloroethene  
 Concen: 44.310 ug/L  
 RT: 7.899 min Scan# 2133  
 Delta R.T. 0.003 min  
 Lab File: VV037810.D  
 Acq: 10 Oct 2024 16:51

Tgt Ion: 164 Resp: 168913

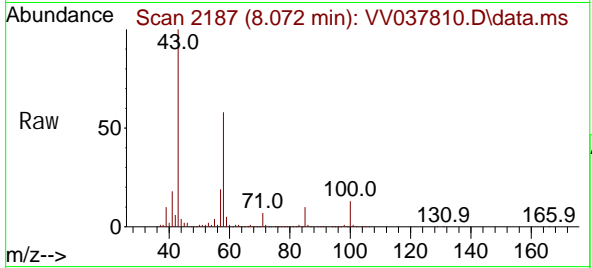
Ion	Ratio	Lower	Upper
164	100		
129	100.2	68.2	126.6
131	94.6	66.1	122.8
166	131.7	91.1	169.1



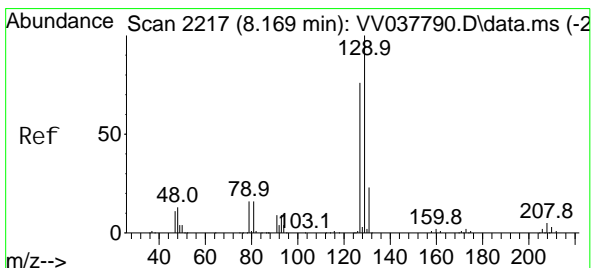
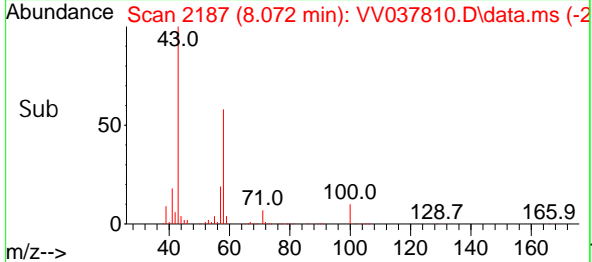
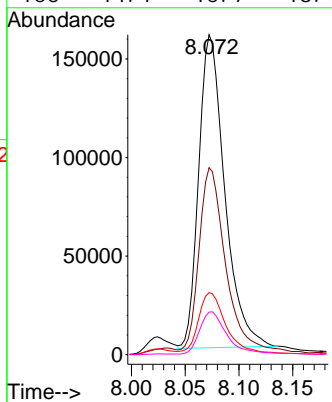


#48  
 2-Hexanone  
 Concen: 87.270 ug/L  
 RT: 8.072 min Scan# 2186  
 Delta R.T. 0.003 min  
 Lab File: VV037810.D  
 Acq: 10 Oct 2024 16:51

Instrument : MSVOA\_V  
 ClientSampleId :

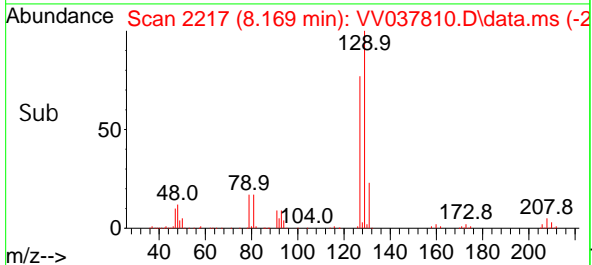
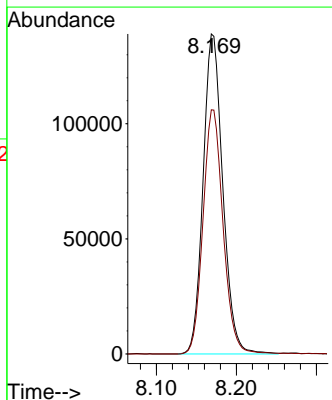
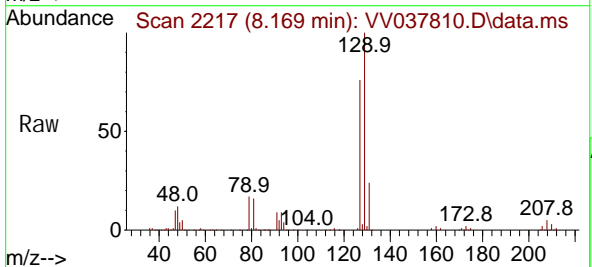


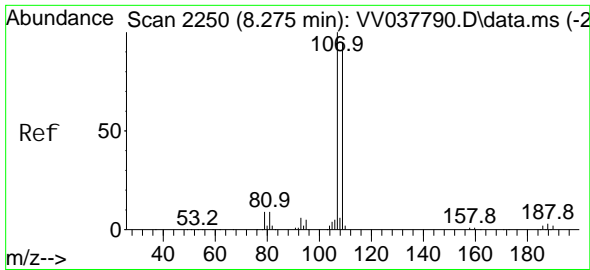
Tgt Ion: 43 Resp: 267117  
 Ion Ratio Lower Upper  
 43 100  
 58 62.0 46.5 69.7  
 57 21.3 15.1 22.7  
 100 14.1 10.7 16.1



#49  
 Di bromochloromethane  
 Concen: 48.489 ug/L  
 RT: 8.169 min Scan# 2217  
 Delta R.T. 0.000 min  
 Lab File: VV037810.D  
 Acq: 10 Oct 2024 16:51

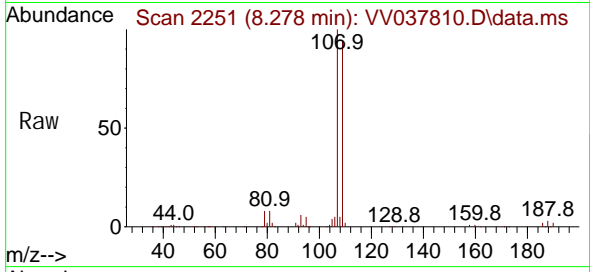
Tgt Ion: 129 Resp: 238232  
 Ion Ratio Lower Upper  
 129 100  
 127 76.3 54.9 101.9



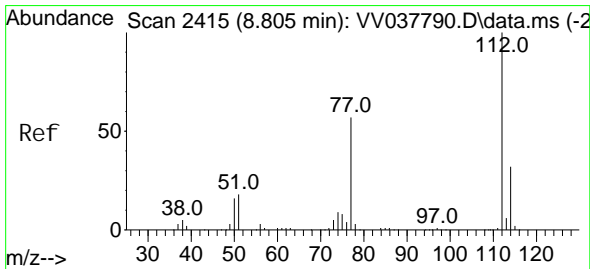
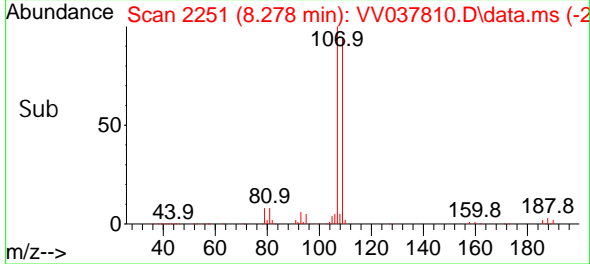
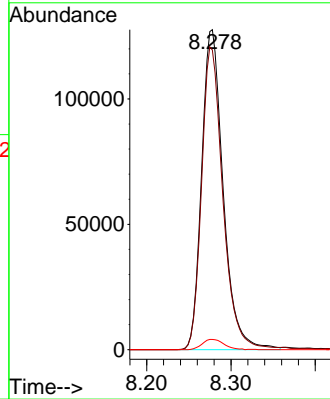


#50  
 1, 2-Di bromoethane  
 Concen: 47.323 ug/L  
 RT: 8.278 min Scan# 21  
 Delta R.T. 0.003 min  
 Lab File: VV037810.D  
 Acq: 10 Oct 2024 16:51

Instrument :  
 MSVOA\_V  
 ClientSampleId :

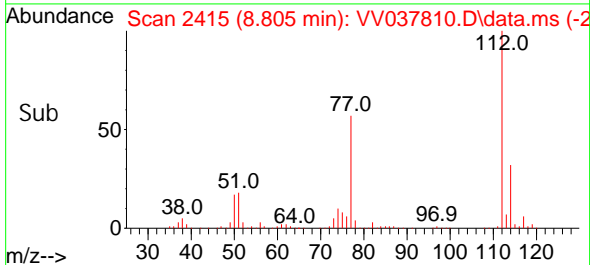
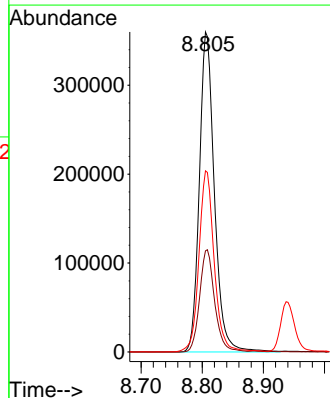
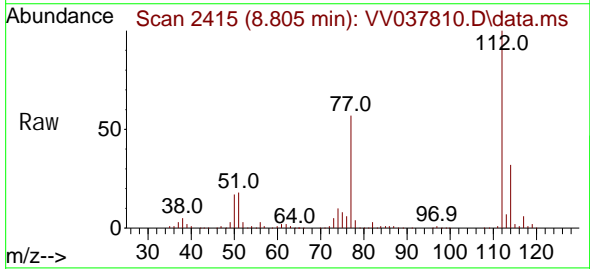


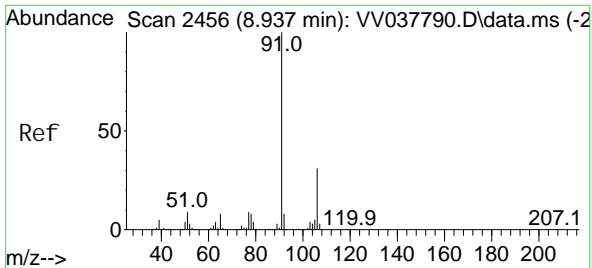
Tgt Ion: 107 Resp: 227080  
 Ion Ratio Lower Upper  
 107 100  
 109 93.7 65.7 121.9  
 188 3.2 2.8 4.2



#51  
 Chlorobenzene  
 Concen: 46.480 ug/L  
 RT: 8.805 min Scan# 2415  
 Delta R.T. 0.000 min  
 Lab File: VV037810.D  
 Acq: 10 Oct 2024 16:51

Tgt Ion: 112 Resp: 614622  
 Ion Ratio Lower Upper  
 112 100  
 114 31.6 22.5 41.7  
 77 56.6 45.8 68.8

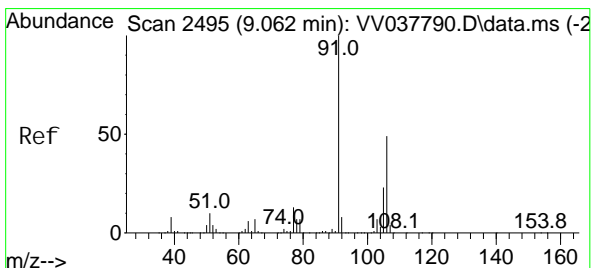
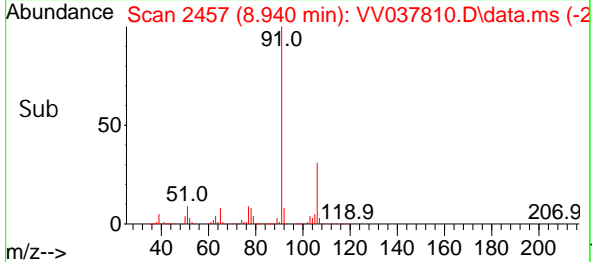
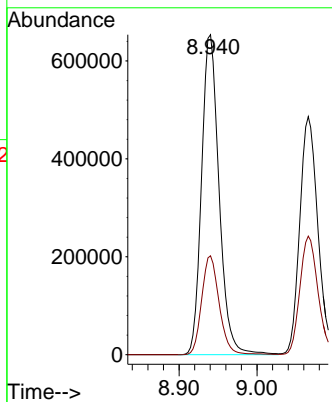
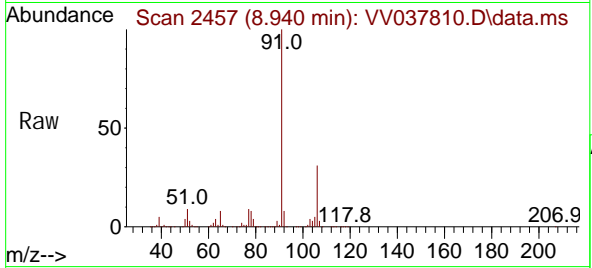




#52  
 Ethyl benzene  
 Concen: 46.802 ug/L  
 RT: 8.940 min Scan# 2456  
 Delta R.T. 0.003 min  
 Lab File: VV037810.D  
 Acq: 10 Oct 2024 16:51

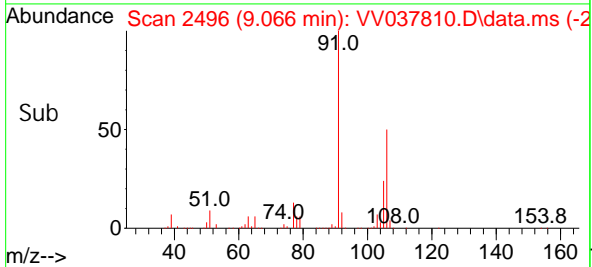
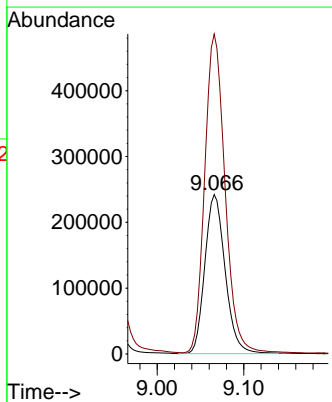
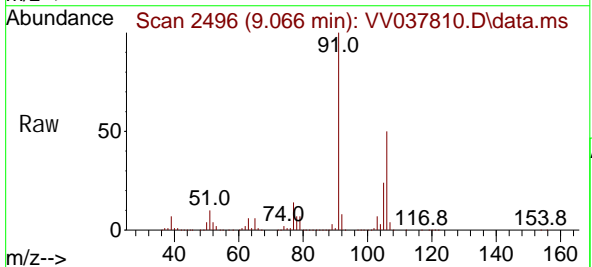
Instrument : MSVOA\_V  
 ClientSampleId :

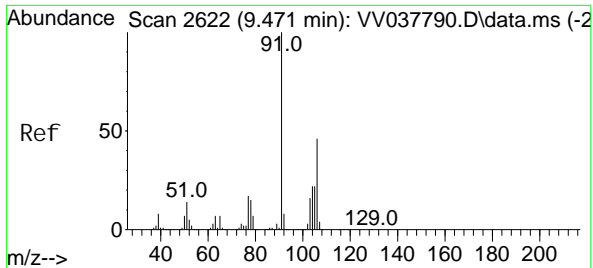
Tgt Ion: 91 Resp: 1022512  
 Ion Ratio Lower Upper  
 91 100  
 106 30.9 21.9 40.7



#53  
 m, p-Xyl ene  
 Concen: 48.347 ug/L  
 RT: 9.066 min Scan# 2496  
 Delta R.T. 0.003 min  
 Lab File: VV037810.D  
 Acq: 10 Oct 2024 16:51

Tgt Ion: 106 Resp: 393113  
 Ion Ratio Lower Upper  
 106 100  
 91 200.8 142.0 263.6

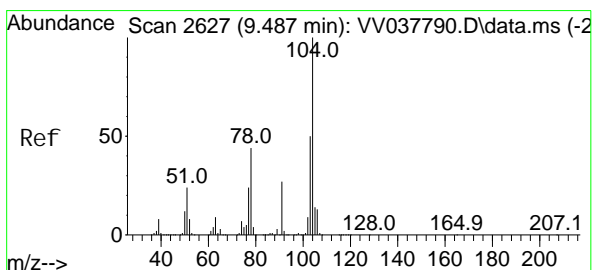
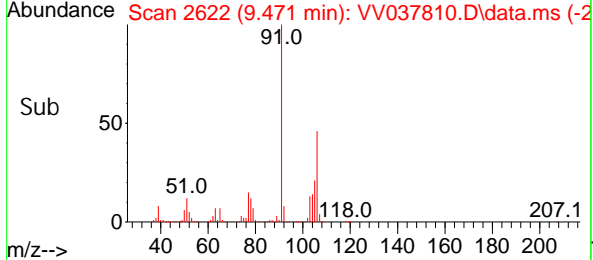
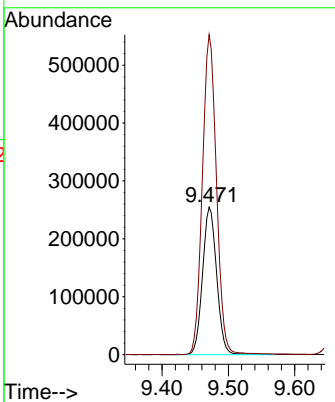
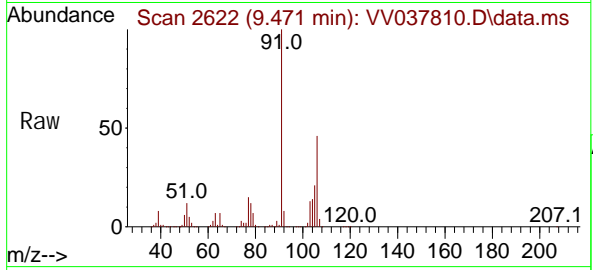




#54  
 o-Xyl ene  
 Concen: 47.364 ug/L  
 RT: 9.471 min Scan# 2622  
 Delta R.T. 0.000 min  
 Lab File: VV037810.D  
 Acq: 10 Oct 2024 16:51

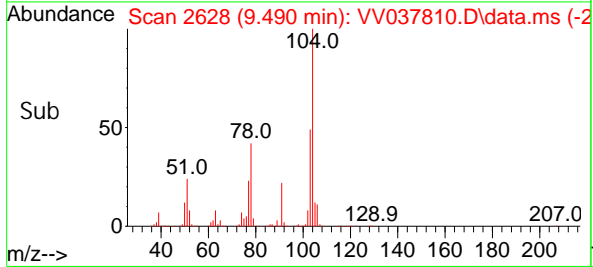
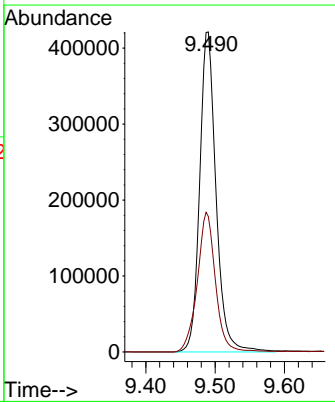
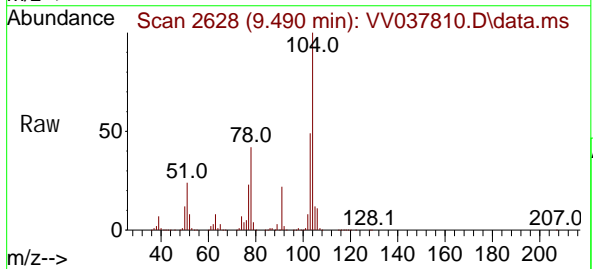
Instrument : MSVOA\_V  
 ClientSampleId :

Tgt Ion: 106 Resp: 375986  
 Ion Ratio Lower Upper  
 106 100  
 91 216.8 153.9 285.9

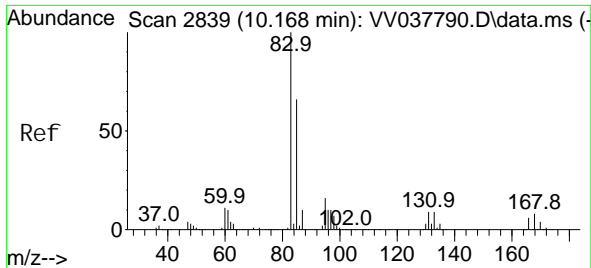


#55  
 Styrene  
 Concen: 49.915 ug/L  
 RT: 9.490 min Scan# 2628  
 Delta R.T. 0.003 min  
 Lab File: VV037810.D  
 Acq: 10 Oct 2024 16:51

Tgt Ion: 104 Resp: 689791  
 Ion Ratio Lower Upper  
 104 100  
 78 42.4 30.0 55.6



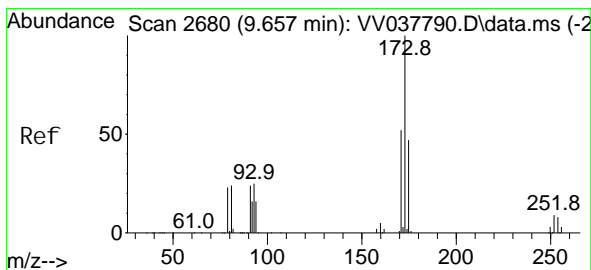
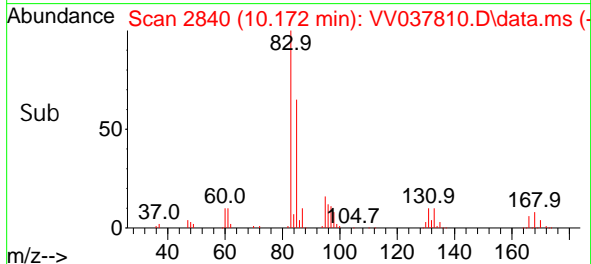
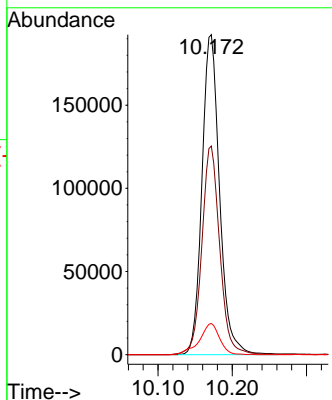
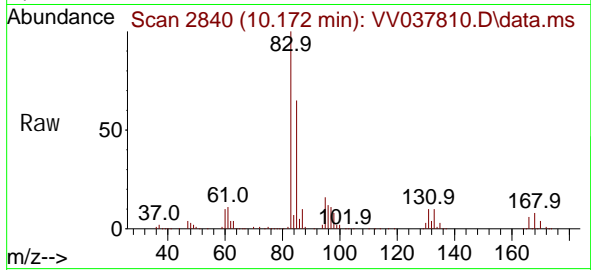




#57  
 1, 1, 2, 2-Tetrachloroethane  
 Concen: 48.982 ug/L  
 RT: 10.172 min Scan# 2839  
 Delta R.T. 0.003 min  
 Lab File: VV037810.D  
 Acq: 10 Oct 2024 16:51

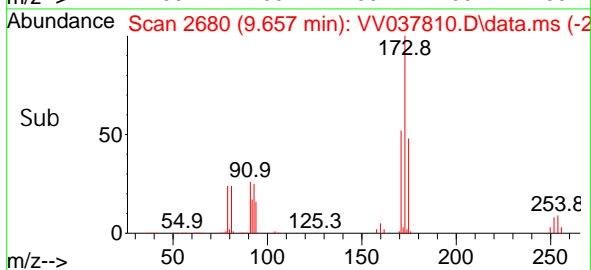
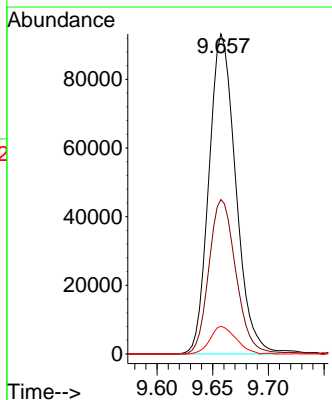
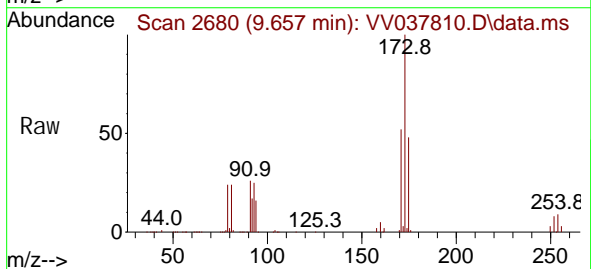
Instrument : MSVOA\_V  
 ClientSampleId :

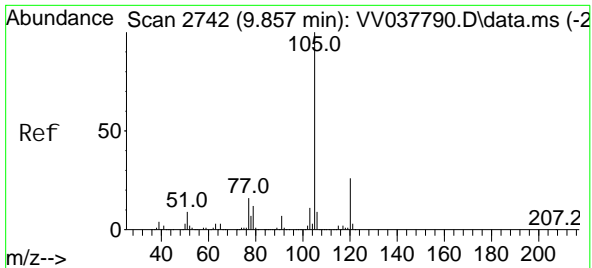
Tgt Ion: 83 Resp: 317016  
 Ion Ratio Lower Upper  
 83 100  
 85 65.2 45.9 85.3  
 131 9.8 7.9 11.9



#59  
 Bromoform  
 Concen: 47.323 ug/L  
 RT: 9.657 min Scan# 2680  
 Delta R.T. 0.000 min  
 Lab File: VV037810.D  
 Acq: 10 Oct 2024 16:51

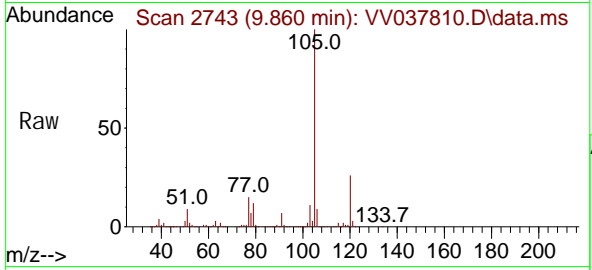
Tgt Ion: 173 Resp: 156290  
 Ion Ratio Lower Upper  
 173 100  
 175 48.5 40.0 60.0  
 254 8.3 6.5 9.7



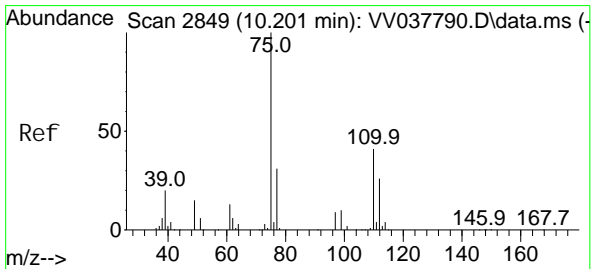
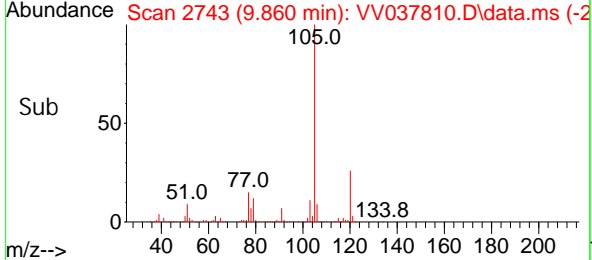
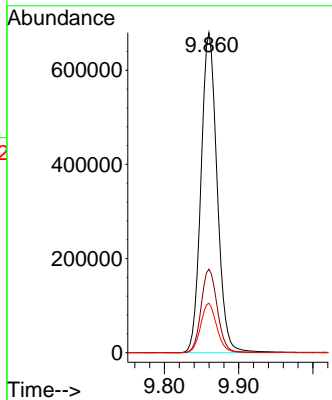


#60  
 Isopropyl benzene  
 Concen: 46.629 ug/L  
 RT: 9.860 min Scan# 2850  
 Delta R.T. 0.003 min  
 Lab File: VV037810.D  
 Acq: 10 Oct 2024 16:51

Instrument : MSVOA\_V  
 ClientSampleId :

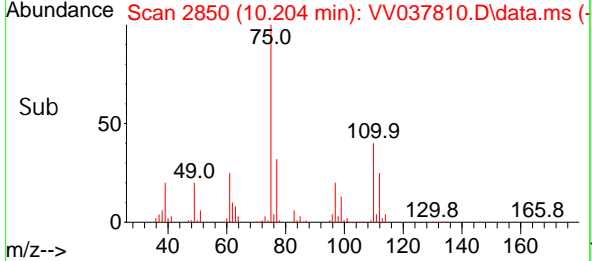
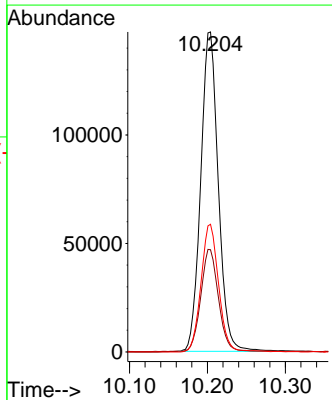
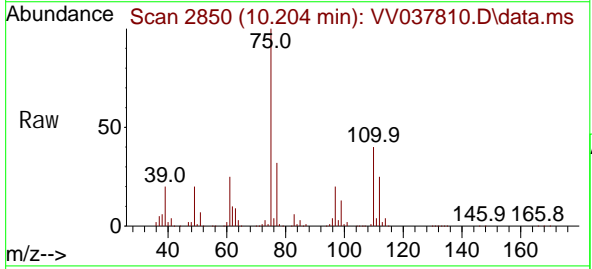


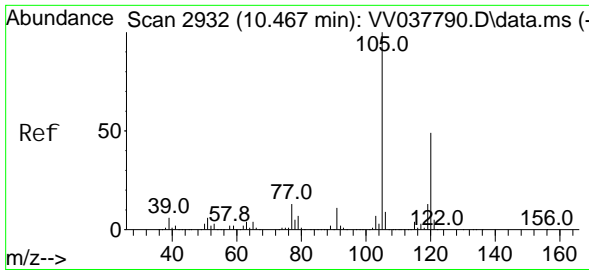
Tgt Ion: 105 Resp: 1024371  
 Ion Ratio Lower Upper  
 105 100  
 120 26.2 20.7 31.1  
 77 15.4 12.2 18.2



#61  
 1,2,3-Trichloropropane  
 Concen: 47.931 ug/L  
 RT: 10.204 min Scan# 2850  
 Delta R.T. 0.003 min  
 Lab File: VV037810.D  
 Acq: 10 Oct 2024 16:51

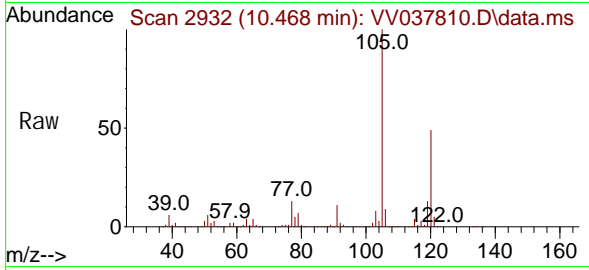
Tgt Ion: 75 Resp: 230462  
 Ion Ratio Lower Upper  
 75 100  
 77 31.7 25.4 38.0  
 110 39.8 31.7 47.5



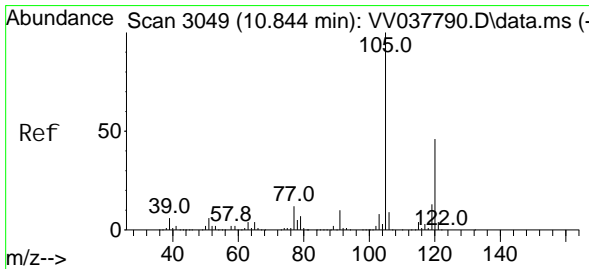
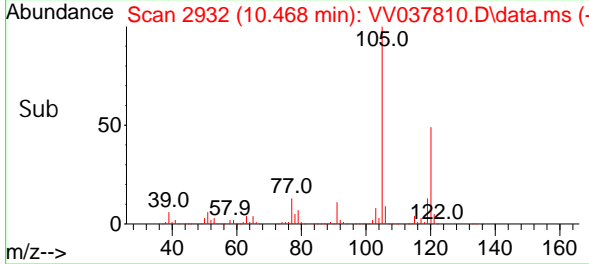
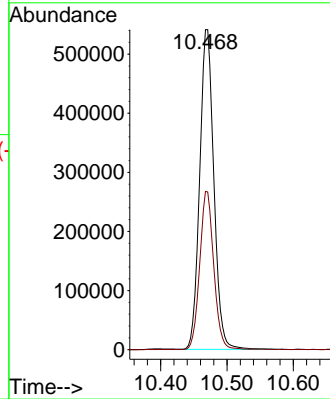


#62  
 1, 3, 5-Tri methyl benzene  
 Concen: 46.257 ug/L  
 RT: 10.468 min Scan# 2932  
 Delta R.T. 0.000 min  
 Lab File: VV037810.D  
 Acq: 10 Oct 2024 16:51

Instrument : MSVOA\_V  
 ClientSampleId :

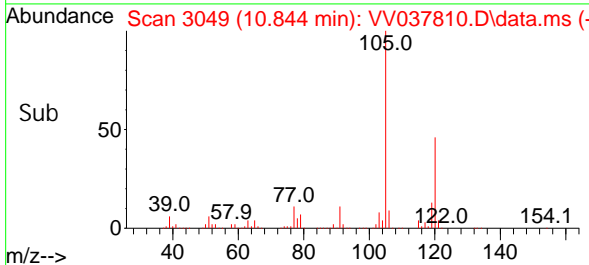
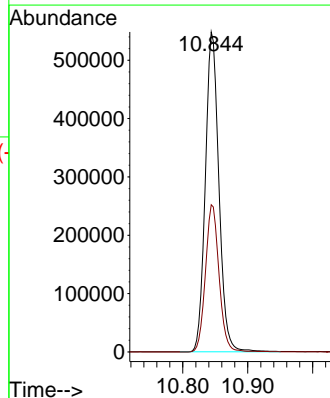
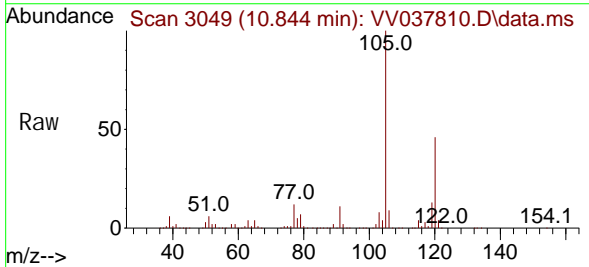


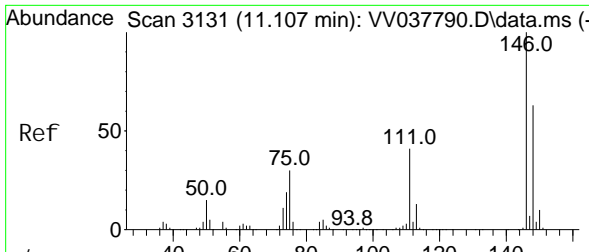
Tgt Ion: 105 Resp: 803420  
 Ion Ratio Lower Upper  
 105 100  
 120 48.9 39.3 58.9



#63  
 1, 2, 4-Tri methyl benzene  
 Concen: 46.242 ug/L  
 RT: 10.844 min Scan# 3049  
 Delta R.T. 0.000 min  
 Lab File: VV037810.D  
 Acq: 10 Oct 2024 16:51

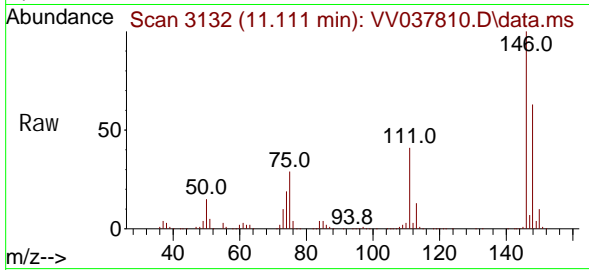
Tgt Ion: 105 Resp: 799114  
 Ion Ratio Lower Upper  
 105 100  
 120 46.0 36.2 54.2



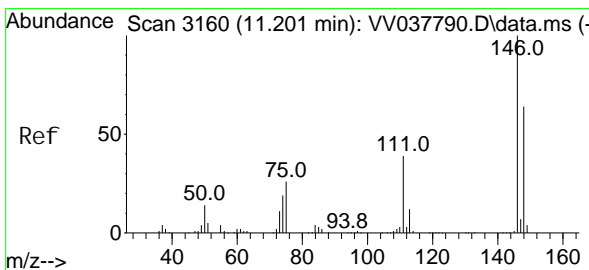
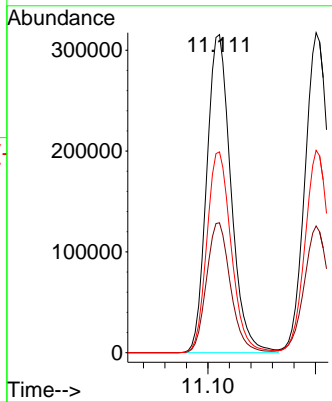
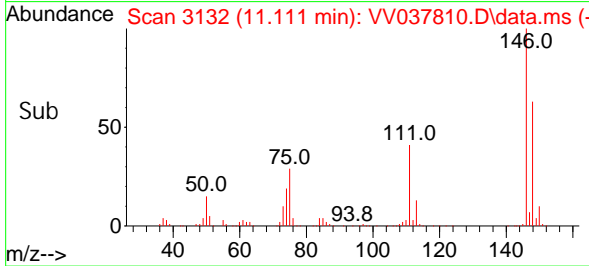


#64  
 1, 3-Di chl orobenzene  
 Concen: 46.679 ug/L  
 RT: 11.111 min Scan# 3132  
 Delta R.T. 0.003 min  
 Lab File: VV037810.D  
 Acq: 10 Oct 2024 16:51

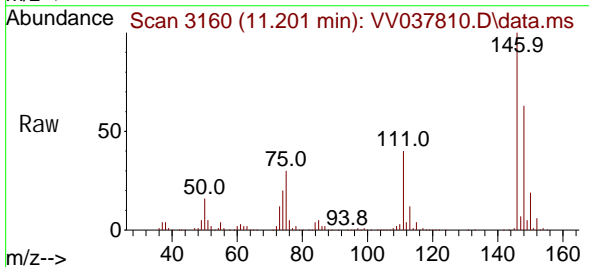
Instrument : MSVOA\_V  
 ClientSampleId :



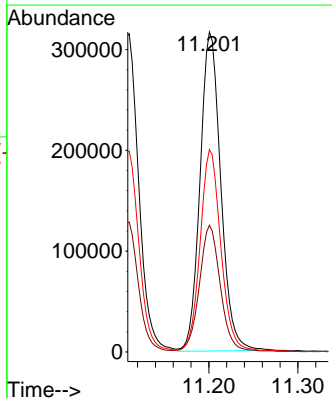
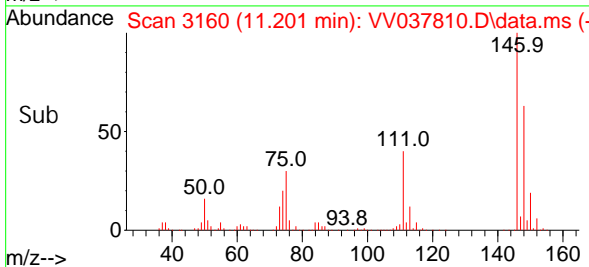
Tgt Ion: 146 Resp: 493593  
 Ion Ratio Lower Upper  
 146 100  
 111 40.8 28.3 52.5  
 148 63.1 44.3 82.3

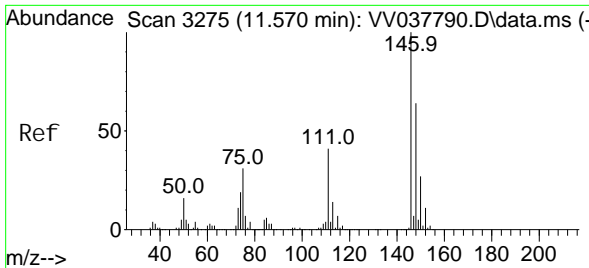


#65  
 1, 4-Di chl orobenzene  
 Concen: 46.394 ug/L  
 RT: 11.201 min Scan# 3160  
 Delta R.T. 0.000 min  
 Lab File: VV037810.D  
 Acq: 10 Oct 2024 16:51



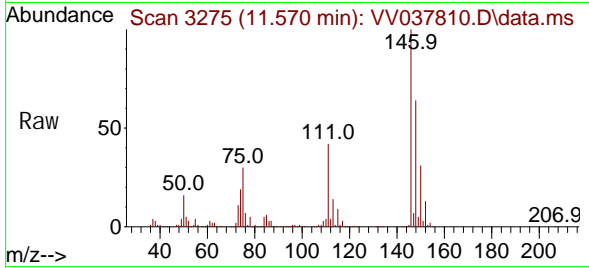
Tgt Ion: 146 Resp: 510834  
 Ion Ratio Lower Upper  
 146 100  
 111 39.6 27.6 51.4  
 148 63.2 44.4 82.4



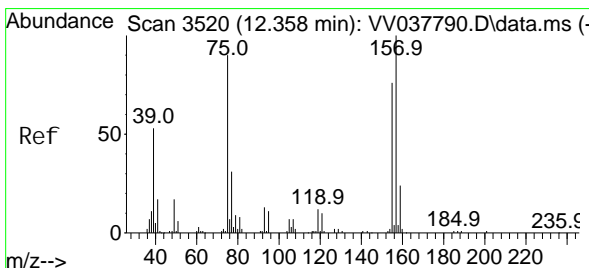
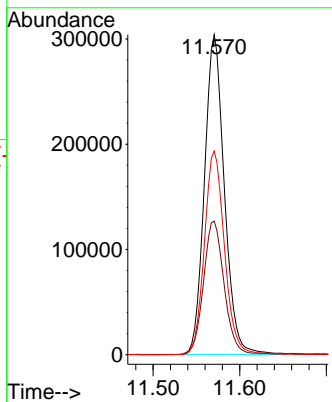
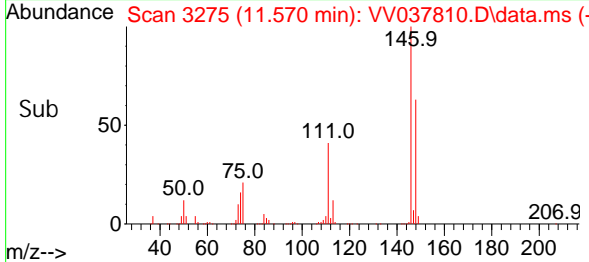


#67  
 1, 2-Di chl orobenzene  
 Concen: 46.462 ug/L  
 RT: 11.570 min Scan# 31  
 Delta R.T. 0.000 min  
 Lab File: VV037810.D  
 Acq: 10 Oct 2024 16:51

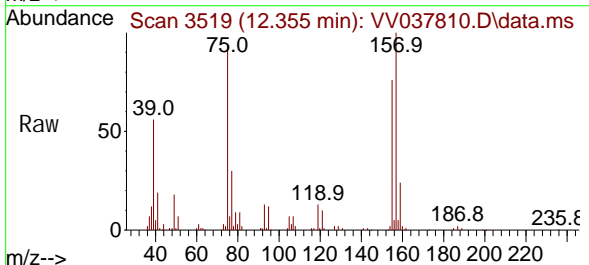
Instrument :  
 MSVOA\_V  
 ClientSampleId :



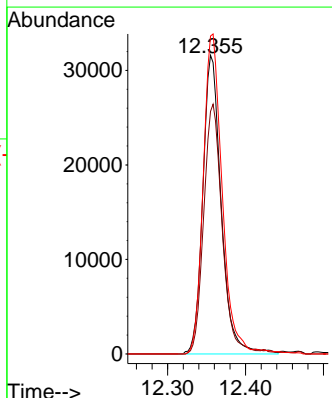
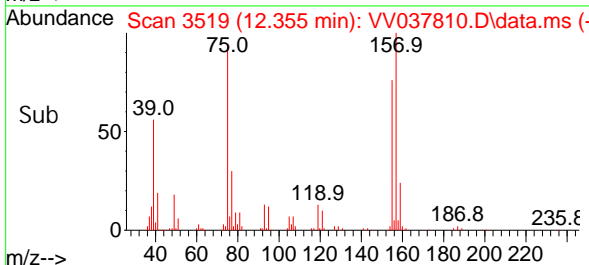
Tgt Ion: 146 Resp: 485685  
 Ion Ratio Lower Upper  
 146 100  
 111 41.8 34.2 51.2  
 148 63.7 50.9 76.3

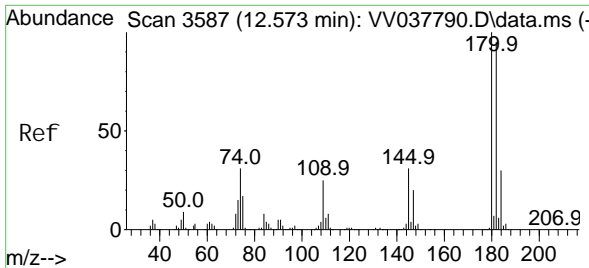


#68  
 1, 2-Di bromo-3- chl oropropane  
 Concen: 44.433 ug/L  
 RT: 12.355 min Scan# 3519  
 Delta R.T. -0.003 min  
 Lab File: VV037810.D  
 Acq: 10 Oct 2024 16:51



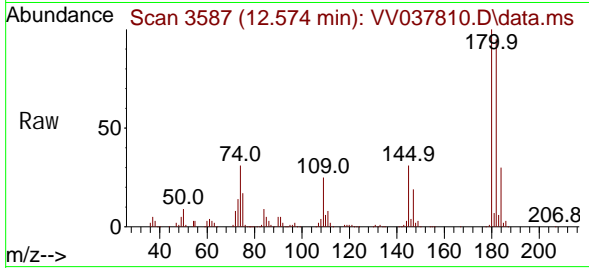
Tgt Ion: 75 Resp: 51861  
 Ion Ratio Lower Upper  
 75 100  
 155 81.2 66.2 99.4  
 157 106.5 87.3 130.9



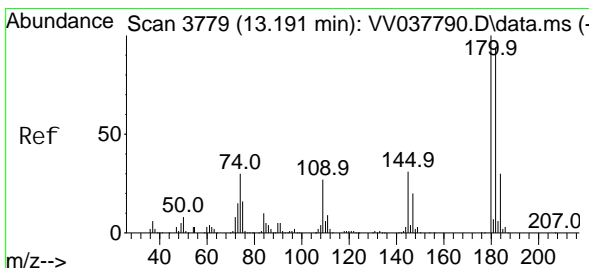
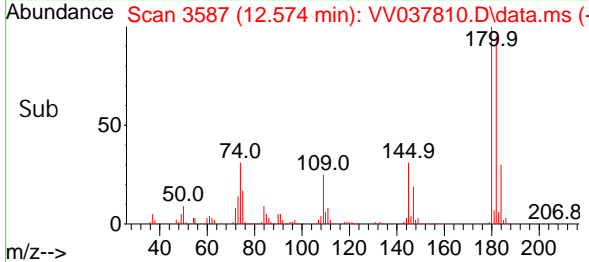
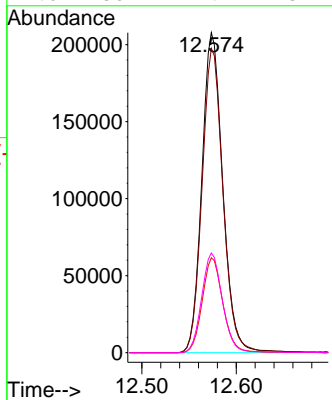


#69  
 1, 3, 5-Tri chlorobenzene  
 Concen: 43.814 ug/L  
 RT: 12.574 min Scan# 3587  
 Delta R.T. 0.000 min  
 Lab File: VV037810.D  
 Acq: 10 Oct 2024 16:51

Instrument :  
 MSVOA\_V  
 ClientSampleId :

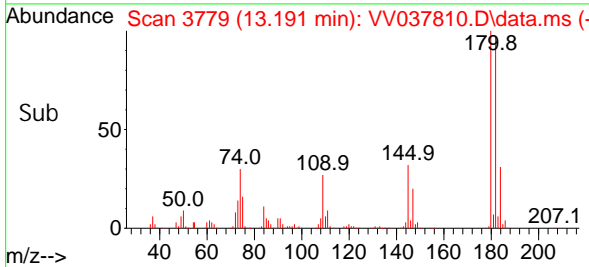
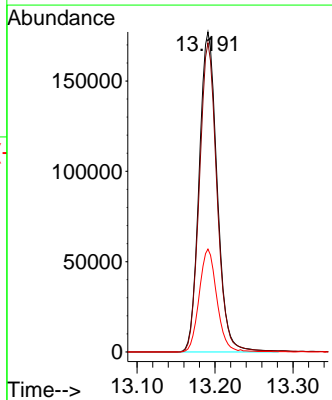
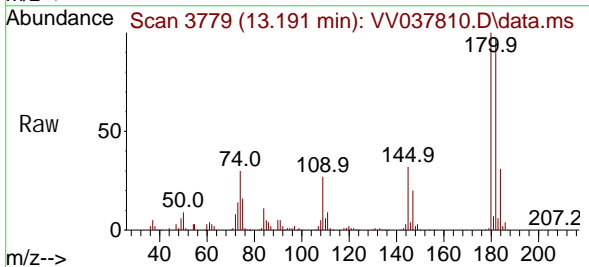


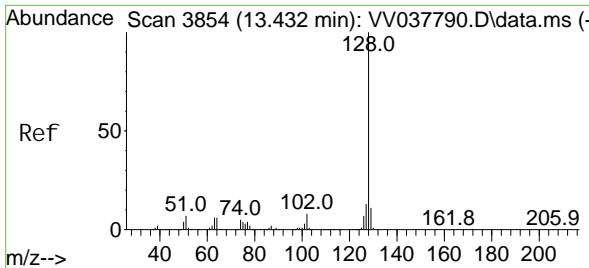
Tgt Ion: 180 Resp: 318602  
 Ion Ratio Lower Upper  
 180 100  
 182 94.9 75.6 113.4  
 184 29.3 23.8 35.6  
 145 30.7 24.7 37.1



#70  
 1, 2, 4-tri chlorobenzene  
 Concen: 42.058 ug/L  
 RT: 13.191 min Scan# 3779  
 Delta R.T. 0.000 min  
 Lab File: VV037810.D  
 Acq: 10 Oct 2024 16:51

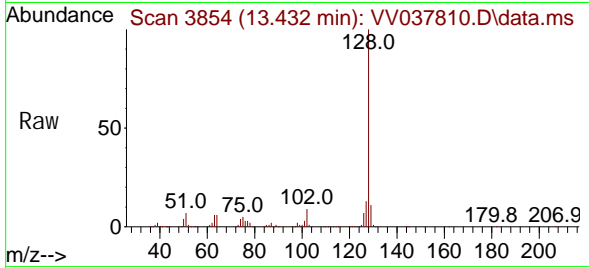
Tgt Ion: 180 Resp: 283750  
 Ion Ratio Lower Upper  
 180 100  
 182 94.2 75.9 113.9  
 145 31.3 25.4 38.2



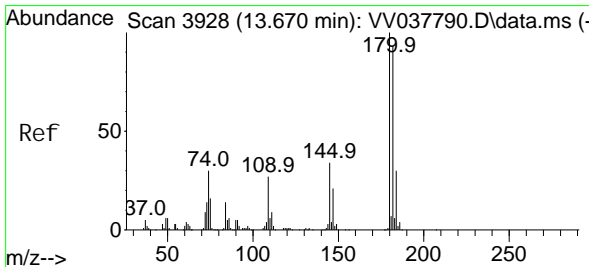
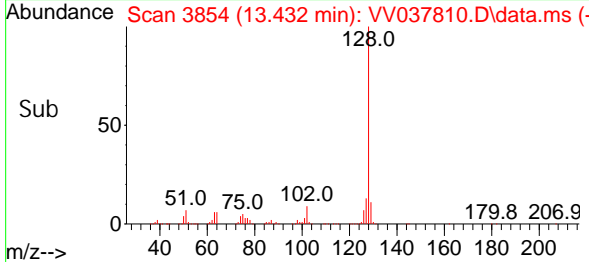
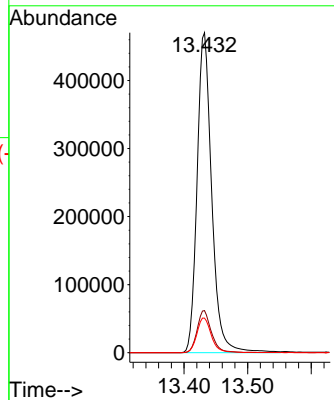


#71  
 Naphthalene  
 Concen: 42.648 ug/L  
 RT: 13.432 min Scan# 3854  
 Delta R.T. 0.000 min  
 Lab File: VV037810.D  
 Acq: 10 Oct 2024 16:51

Instrument : MSVOA\_V  
 ClientSampleId :



Tgt Ion: 128 Resp: 751749  
 Ion Ratio Lower Upper  
 128 100  
 127 12.9 10.2 15.4  
 129 10.7 8.5 12.7



#72  
 1,2,3-Trichlorobenzene  
 Concen: 43.166 ug/L  
 RT: 13.673 min Scan# 3929  
 Delta R.T. 0.003 min  
 Lab File: VV037810.D  
 Acq: 10 Oct 2024 16:51

Tgt Ion: 180 Resp: 287589  
 Ion Ratio Lower Upper  
 180 100  
 182 95.8 75.8 113.8  
 145 34.0 26.2 39.4

