

Data Path : Z:\voasrv\HPCHEM1\MSVOA_V\DATA\VV102324\
 Data File : VV037914.D
 Acq On : 23 Oct 2024 11:21
 Operator : SY/MD
 Sample : VV1023MBL01
 Mi sc : 5.00g/5mL/100ul /5ml /MSVOA_V/MEOH
 ALS Vial : 4 Sample Multiplier: 1

Instrument :
 MSVOA_V
 ClientSampleId :

Quant Time: Oct 24 01:50:03 2024
 Quant Method : Z:\voasrv\HPCHEM1\MSVOA_V\Method\SFAMVLM092624WMA.M
 Quant Title : VOC Analysis
 QLast Update : Tue Oct 22 05:07:16 2024
 Response via : Initial Calibration

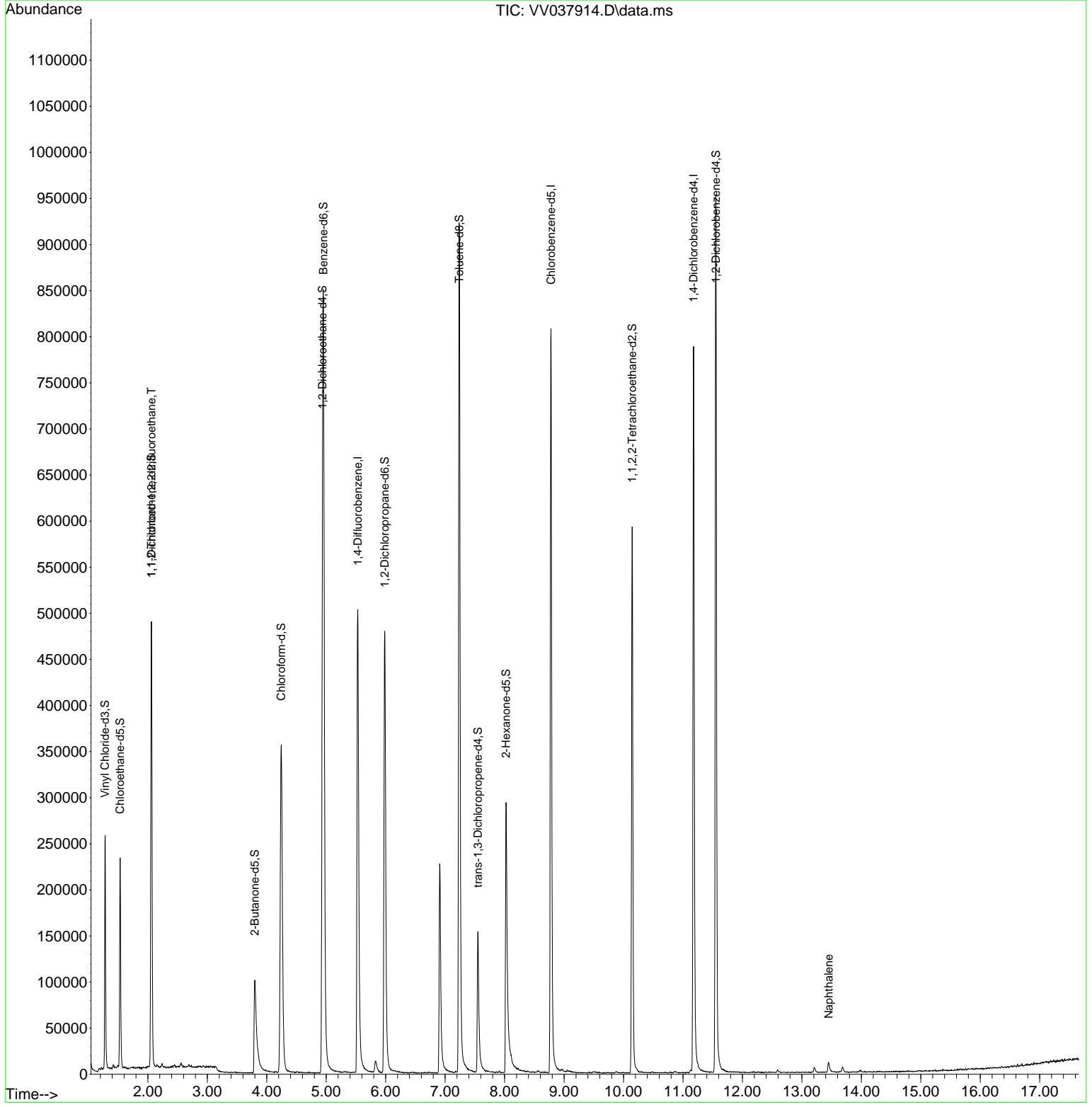
Compound	R. T.	QI on	Response	Conc	Units	Dev(Min)
Internal Standards						
1) 1,4-Difluorobenzene	5.529	114	456976	50.000	ug/L	0.00
28) Chlorobenzene-d5	8.780	117	455479	50.000	ug/L	0.00
58) 1,4-Dichlorobenzene-d4	11.178	152	210800	50.000	ug/L	0.00
System Monitoring Compounds						
4) Vinyl Chloride-d3	1.278	65	167651	41.792	ug/L	0.00
Spike Amount	50.000	Range	60 - 135	Recovery	=	83.580%
7) Chloroethane-d5	1.532	69	150753	48.415	ug/L	0.00
Spike Amount	50.000	Range	70 - 130	Recovery	=	96.820%
11) 1,1-Dichloroethane-d2	2.060	65	79272	47.299	ug/L	0.00
Spike Amount	50.000	Range	60 - 125	Recovery	=	94.600%
21) 2-Butanone-d5	3.799	46	166866	116.785	ug/L	0.00
Spike Amount	100.000	Range	40 - 130	Recovery	=	116.790%
24) Chloroform-d	4.243	84	385138	53.964	ug/L	0.00
Spike Amount	50.000	Range	70 - 125	Recovery	=	107.920%
26) 1,2-Dichloroethane-d4	4.937	65	239398	57.307	ug/L	0.00
Spike Amount	50.000	Range	70 - 125	Recovery	=	114.620%
32) Benzene-d6	4.953	84	744173	52.212	ug/L	0.00
Spike Amount	50.000	Range	70 - 125	Recovery	=	104.420%
36) 1,2-Dichloropropane-d6	5.982	67	238849	52.627	ug/L	0.00
Spike Amount	50.000	Range	70 - 120	Recovery	=	105.260%
41) Toluene-d8	7.236	98	635046	49.137	ug/L	0.00
Spike Amount	50.000	Range	80 - 120	Recovery	=	98.280%
43) trans-1,3-Dichloroprop...	7.551	79	101613	48.196	ug/L	0.00
Spike Amount	50.000	Range	60 - 125	Recovery	=	96.400%
47) 2-Hexanone-d5	8.024	63	102215	106.657	ug/L	0.00
Spike Amount	100.000	Range	45 - 130	Recovery	=	106.660%
56) 1,1,2,2-Tetrachloroeth...	10.146	84	288507	54.710	ug/L	0.00
Spike Amount	50.000	Range	65 - 120	Recovery	=	109.420%
66) 1,2-Dichlorobenzene-d4	11.554	152	250990	56.504	ug/L	0.00
Spike Amount	50.000	Range	80 - 120	Recovery	=	113.000%
Target Compounds						
10) 1,1,2-Trichloro-1,2,2-...	2.060	101	2862	0.879	ug/L #	29
71) Naphthalene	13.451	128	12095	1.100	ug/L #	85

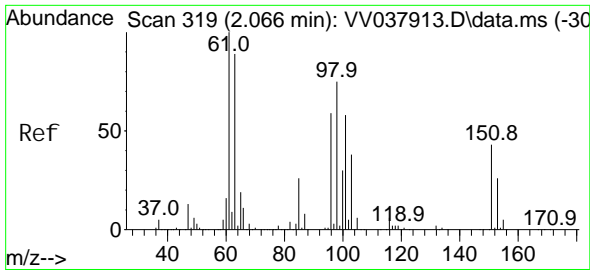
(#) = qualifier out of range (m) = manual integration (+) = signals summed

Data Path : Z:\voasrv\HPCHEM1\MSVOA_V\DATA\VV102324\
 Data File : VV037914.D
 Acq On : 23 Oct 2024 11:21
 Operator : SY/MD
 Sample : VV1023MBL01
 Misc : 5.00g/5mL/100ul /5ml /MSVOA_V/MEOH
 ALS Vial : 4 Sample Multiplier: 1

Instrument :
 MSVOA_V
ClientSampleId :

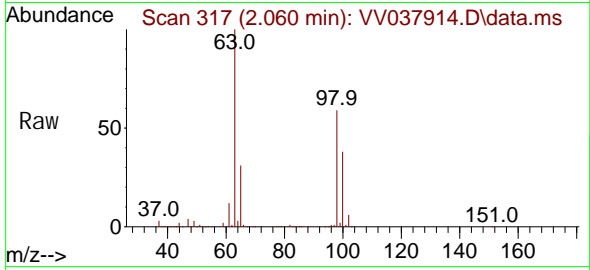
Quant Time: Oct 24 01:50:03 2024
 Quant Method : Z:\voasrv\HPCHEM1\MSVOA_V\Method\SFAMVLM092624WMA.M
 Quant Title : VOC Analysis
 QLast Update : Tue Oct 22 05:07:16 2024
 Response via : Initial Calibration



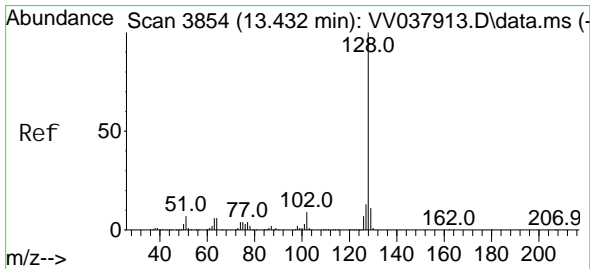
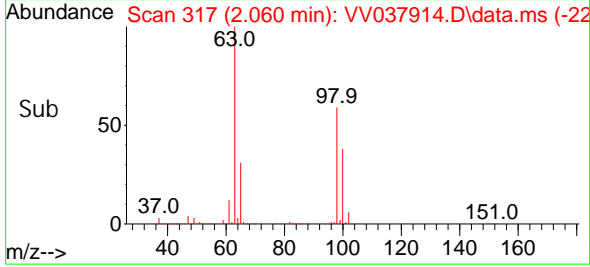
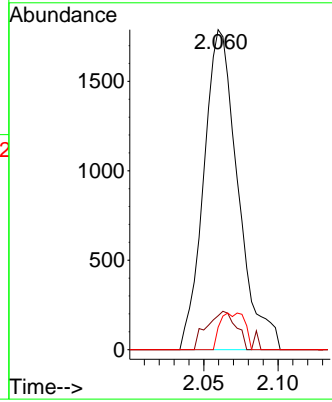


#10
 1,1,2-Tri chloro-1,2,2-tri fluoroethane
 Concen: 0.879 ug/L
 RT: 2.060 min Scan# 317
 Delta R.T. -0.007 min
 Lab File: VV037914.D
 Acq: 23 Oct 2024 11:21

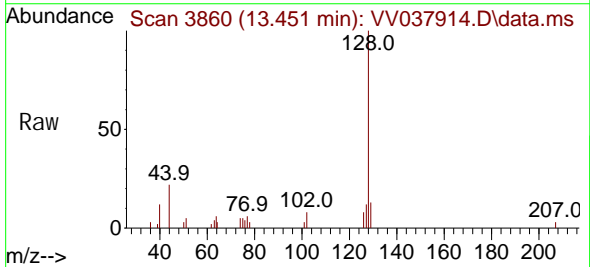
Instrument :
 MSVOA_V
 ClientSampleId :



Tgt Ion: 101 Resp: 2862
 Ion Ratio Lower Upper
 101 100
 85 8.7 34.6 52.0#
 151 4.8 57.5 86.3#



#71
 Naphthalene
 Concen: 1.100 ug/L
 RT: 13.451 min Scan# 3860
 Delta R.T. 0.019 min
 Lab File: VV037914.D
 Acq: 23 Oct 2024 11:21



Tgt Ion: 128 Resp: 12095
 Ion Ratio Lower Upper
 128 100
 127 6.5 10.2 15.4#
 129 5.1 8.5 12.7#

