

Data Path : Z:\voasrv\HPCHEM1\MSVOA\_V\DATA\VV102324\  
 Data File : VV037917.D  
 Acq On : 23 Oct 2024 15:16  
 Operator : SY/MD  
 Sample : P4436-20  
 Misc : 5mL/MSVOA\_V/WATER  
 ALS Vial : 7 Sample Multiplier: 1

Instrument :  
 MSVOA\_V  
 ClientSampleId :  
 A4FF0

Quant Time: Oct 24 01:50:44 2024  
 Quant Method : Z:\voasrv\HPCHEM1\MSVOA\_V\Method\SFAMVLM092624WMA.M  
 Quant Title : VOC Analysis  
 QLast Update : Tue Oct 22 05:07:16 2024  
 Response via : Initial Calibration

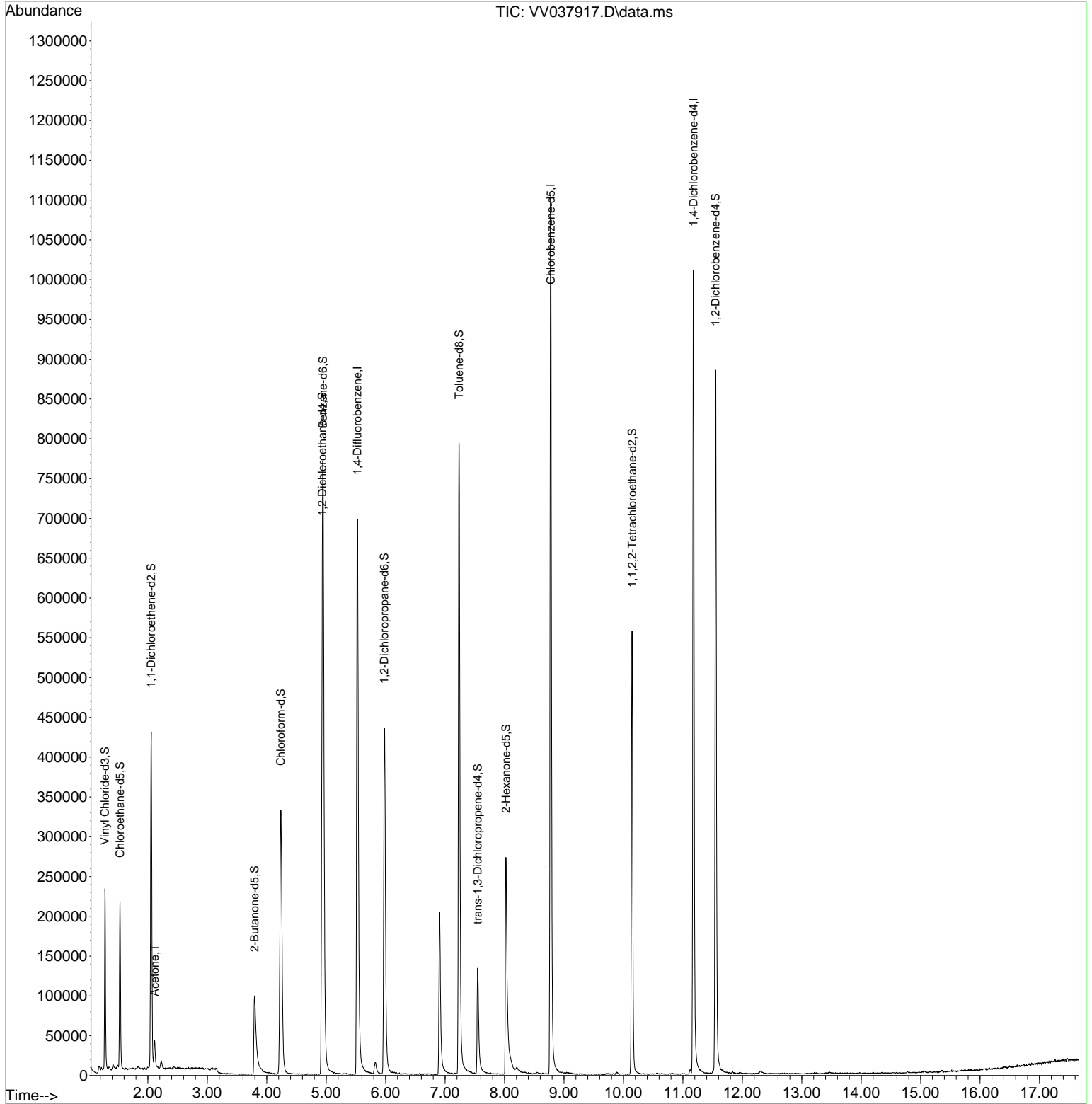
Compound	R.T.	QIon	Response	Conc	Units	Dev(Min)
-----						
Internal Standards						
1) 1,4-Difluorobenzene	5.526	114	630724	50.000	ug/L	0.00
28) Chlorobenzene-d5	8.776	117	621359	50.000	ug/L	0.00
58) 1,4-Dichlorobenzene-d4	11.178	152	270530	50.000	ug/L	0.00
System Monitoring Compounds						
4) Vinyl Chloride-d3	1.278	65	149009	26.913	ug/L	0.00
Spiked Amount	50.000	Range 60 - 135	Recovery =	53.820%#		
7) Chloroethane-d5	1.532	69	140690	32.736	ug/L	0.00
Spiked Amount	50.000	Range 70 - 130	Recovery =	65.480%#		
11) 1,1-Dichloroethene-d2	2.056	65	71118	30.744	ug/L	0.00
Spiked Amount	50.000	Range 60 - 125	Recovery =	61.480%		
21) 2-Butanone-d5	3.796	46	156669	79.443	ug/L	0.00
Spiked Amount	100.000	Range 40 - 130	Recovery =	79.440%		
24) Chloroform-d	4.236	84	358661	36.410	ug/L	0.00
Spiked Amount	50.000	Range 70 - 125	Recovery =	72.820%		
26) 1,2-Dichloroethane-d4	4.934	65	218956	37.975	ug/L	0.00
Spiked Amount	50.000	Range 70 - 125	Recovery =	75.960%		
32) Benzene-d6	4.947	84	667774	34.344	ug/L	0.00
Spiked Amount	50.000	Range 70 - 125	Recovery =	68.680%#		
36) 1,2-Dichloropropane-d6	5.979	67	222423	35.924	ug/L	0.00
Spiked Amount	50.000	Range 70 - 120	Recovery =	71.840%		
41) Toluene-d8	7.233	98	548166	31.091	ug/L	0.00
Spiked Amount	50.000	Range 80 - 120	Recovery =	62.180%#		
43) trans-1,3-Dichloroprop...	7.548	79	88257	30.686	ug/L	0.00
Spiked Amount	50.000	Range 60 - 125	Recovery =	61.380%		
47) 2-Hexanone-d5	8.024	63	95423	72.988	ug/L	0.00
Spiked Amount	100.000	Range 45 - 130	Recovery =	72.990%		
56) 1,1,2,2-Tetrachloroeth...	10.146	84	271614	37.756	ug/L	0.00
Spiked Amount	50.000	Range 65 - 120	Recovery =	75.520%		
66) 1,2-Dichlorobenzene-d4	11.551	152	238432	41.826	ug/L	0.00
Spiked Amount	50.000	Range 80 - 120	Recovery =	83.660%		
-----						
Target Compounds						Qvalue
13) Acetone	2.114	43	36587	18.925	ug/L	100
-----						

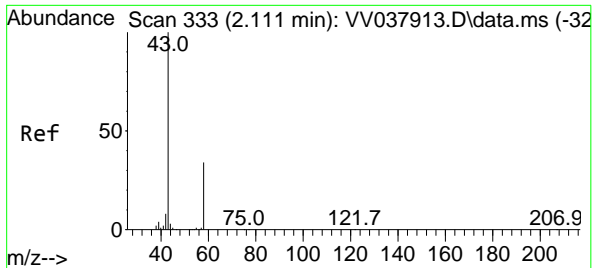
(#) = qualifier out of range (m) = manual integration (+) = signals summed

Data Path : Z:\voasrv\HPCHEM1\MSVOA\_V\DATA\VV102324\  
 Data File : VV037917.D  
 Acq On : 23 Oct 2024 15:16  
 Operator : SY/MD  
 Sample : P4436-20  
 Misc : 5mL/MSVOA\_V/WATER  
 ALS Vial : 7 Sample Multiplier: 1

Instrument :  
 MSVOA\_V  
 ClientSampleId :  
 A4FF0

Quant Time: Oct 24 01:50:44 2024  
 Quant Method : Z:\voasrv\HPCHEM1\MSVOA\_V\Method\SFAMVLM092624WMA.M  
 Quant Title : VOC Analysis  
 QLast Update : Tue Oct 22 05:07:16 2024  
 Response via : Initial Calibration





#13  
 Acetone  
 Concen: 18.925 ug/L  
 RT: 2.114 min Scan# 31  
 Delta R.T. 0.003 min  
 Lab File: VV037917.D  
 Acq: 23 Oct 2024 15:16

Instrument : MSVOA\_V  
 ClientSampleId : A4FF0

Tgt Ion: 43 Resp: 36587  
 Ion Ratio Lower Upper  
 43 100  
 58 33.5 0.0 66.6

