

Data Path : Z:\voasrv\HPCHEM1\MSVOA_V\Data\VW102523\
 Data File : VV032646.D
 Acq On : 25 Oct 2023 20:27
 Operator : SY/MD
 Sample : 04961-04
 Misc : 25.0mL/MSVOA_V/WATER
 ALS Vial : 28 Sample Multiplier: 1

Instrument :
 MSVOA_V
ClientSampleId :
 VHBLK001

Quant Time: Oct 26 05:06:19 2023
 Quant Method : Z:\voasrv\HPCHEM1\MSVOA_V\Method\SFAMVTR092923WMA.M
 Quant Title : TRACE VOA SFAM1.0
 QLast Update : Thu Oct 26 04:59:52 2023
 Response via : Initial Calibration

Manual Integrations
APPROVED
 Reviewed By :John Carlone 10/26/2023
 Supervised By :Mahesh Dadoda 10/27/2023

Compound	R.T.	QIon	Response	Conc	Units	Dev(Min)
Internal Standards						
1) 1,4-Difluorobenzene	5.538	114	86632	5.000	ug/L	0.00
28) Chlorobenzene-d5	8.789	117	100412	5.000	ug/L	0.00
58) 1,4-Dichlorobenzene-d4	11.188	152	42959	5.000	ug/L	0.00
System Monitoring Compounds						
4) Vinyl Chloride-d3	1.278	65	32241	4.576	ug/L	0.00
Spiked Amount	5.000	Range 40 - 130	Recovery	=	91.600%	
7) Chloroethane-d5	1.532	69	30566	5.344	ug/L	0.00
Spiked Amount	5.000	Range 65 - 130	Recovery	=	106.800%	
11) 1,1-Dichloroethene-d2	2.059	65	12894	4.339	ug/L	0.00
Spiked Amount	5.000	Range 60 - 125	Recovery	=	86.800%	
20) 2-Butanone-d5	3.818	46	52221	29.299	ug/L	0.00
Spiked Amount	50.000	Range 40 - 130	Recovery	=	58.600%	
24) Chloroform-d	4.252	84	58542m	4.710	ug/L	0.00
Spiked Amount	5.000	Range 70 - 125	Recovery	=	94.200%	
26) 1,2-Dichloroethane-d4	4.947	65	31141	5.289	ug/L	0.00
Spiked Amount	5.000	Range 70 - 130	Recovery	=	105.800%	
32) Benzene-d6	4.963	84	113906	3.855	ug/L	0.00
Spiked Amount	5.000	Range 70 - 125	Recovery	=	77.200%	
36) 1,2-Dichloropropane-d6	5.989	67	36498	3.728	ug/L	0.00
Spiked Amount	5.000	Range 60 - 140	Recovery	=	74.600%	
41) Toluene-d8	7.246	98	103275	3.823	ug/L	0.00
Spiked Amount	5.000	Range 70 - 130	Recovery	=	76.400%	
43) trans-1,3-Dichloroprop...	7.561	79	13500	3.892	ug/L	0.00
Spiked Amount	5.000	Range 55 - 130	Recovery	=	77.800%	
46) 2-Hexanone-d5	8.030	63	60105	36.826	ug/L	0.00
Spiked Amount	50.000	Range 45 - 130	Recovery	=	73.660%	
56) 1,1,2,2-Tetrachloroeth...	10.156	84	31221	4.560	ug/L	0.00
Spiked Amount	5.000	Range 65 - 120	Recovery	=	91.200%	
66) 1,2-Dichlorobenzene-d4	11.564	152	38326	4.808	ug/L	0.00
Spiked Amount	5.000	Range 80 - 120	Recovery	=	96.200%	
Target Compounds						
16) Methylene chloride	2.449	84	8382	1.012	ug/L	95

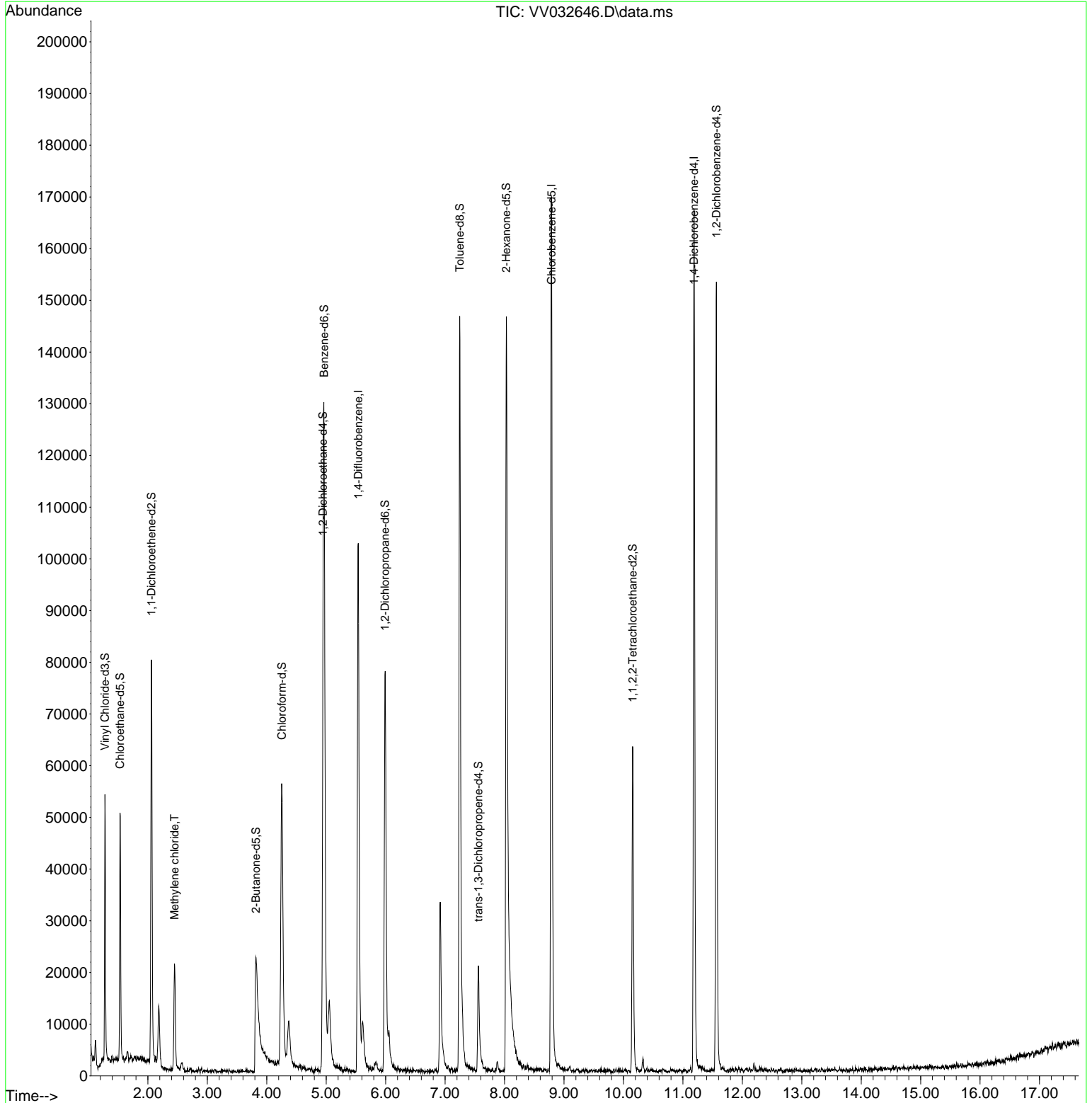
(#) = qualifier out of range (m) = manual integration (+) = signals summed

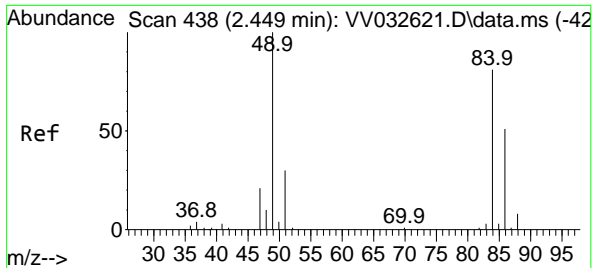
Data Path : Z:\voasrv\HPCHEM1\MSVOA_V\Data\VV102523\
 Data File : VV032646.D
 Acq On : 25 Oct 2023 20:27
 Operator : SY/MD
 Sample : 04961-04
 Misc : 25.0mL/MSVOA_V/WATER
 ALS Vial : 28 Sample Multiplier: 1

Instrument :
 MSVOA_V
ClientSampleId :
 VHBLK001

Quant Time: Oct 26 05:06:19 2023
 Quant Method : Z:\voasrv\HPCHEM1\MSVOA_V\Method\SFAMVTR092923WMA.M
 Quant Title : TRACE VOA SFAM1.0
 QLast Update : Thu Oct 26 04:59:52 2023
 Response via : Initial Calibration

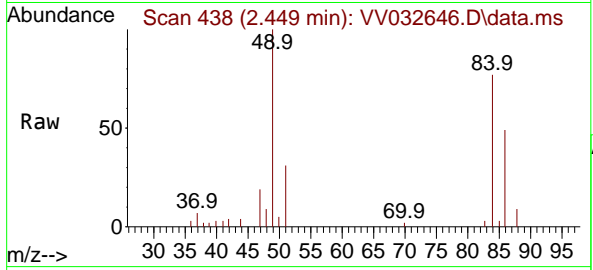
Manual Integrations
APPROVED
 Reviewed By :John Carlone 10/26/2023
 Supervised By :Mahesh Dadoda 10/27/2023





#16
 Methylene chloride
 Concen: 1.012 ug/L
 RT: 2.449 min Scan# 41
 Delta R.T. -0.000 min
 Lab File: VV032646.D
 Acq: 25 Oct 2023 20:27

Instrument :
 MSVOA_V
 ClientSampleId :
 VHBLK001



Tgt Ion: 84 Resp: 838

Ion	Ratio	Lower	Upper
84	100		
86	64.2	43.2	80.2
49	130.5	86.3	160.3

Manual Integrations
APPROVED
 Reviewed By :John Carlone 10/26/2023
 Supervised By :Mahesh Dadoda 10/27/2023

