

Data Path : Z:\voasrv\HPCHEM1\MSVOA_V\Data\VV102523\
 Data File : VV032643.D
 Acq On : 25 Oct 2023 19:14
 Operator : SY/MD
 Sample : 04948-14
 Misc : 25.0mL/MSVOA_V/WATER
 ALS Vial : 25 Sample Multiplier: 1

Instrument :
 MSVOA_V
 ClientSampleId :
 VHBLK002

Integration Parameters: rteint.p
 Integrator: RTE
 Smoothing : ON Filtering: 5
 Sampling : 1 Min Area: 3 % of largest Peak
 Start Thrs: 0.1 Max Peaks: 100
 Stop Thrs : 0 Peak Location: TOP

If leading or trailing edge < 100 prefer < Baseline drop else tangent >
 Peak separation: 5

Method : Z:\voasrv\HPCHEM1\MSVOA_V\Method\SFAMVTR092923WMA.M
 Title : TRACE VOA SFAM1.0

Signal : TIC: VV032643.D\data.ms

peak #	R.T. min	first scan	max scan	last scan	PK TY	peak height	corr. area	corr. % max.	% of total
1	1.118	17	24	32	rVB	5372	7416	1.99%	0.243%
2	1.278	66	74	86	rVB	52621	57110	15.32%	1.869%
3	1.532	145	153	165	rBV	49190	58595	15.72%	1.918%
4	2.060	307	317	331	rBV	81001	119312	32.00%	3.906%
5	2.185	346	356	370	rVB3	12368	23323	6.26%	0.763%
6	2.449	426	438	450	rBV2	22733	38967	10.45%	1.276%
7	2.574	468	477	486	rBV10	2153	4127	1.11%	0.135%
8	3.812	852	862	888	rBV2	23853	88260	23.67%	2.889%
9	4.253	981	999	1021	rBV2	53518	145590	39.05%	4.766%
10	4.371	1026	1036	1055	rVB2	9315	24616	6.60%	0.806%
11	4.960	1201	1219	1237	rBV3	127984	332772	89.25%	10.893%
12	5.053	1242	1248	1271	rVB4	12515	35373	9.49%	1.158%
13	5.535	1386	1398	1414	rBV	101256	213342	57.22%	6.984%
14	5.992	1527	1540	1554	rBV	77889	165504	44.39%	5.418%
15	6.918	1815	1828	1843	rBV2	33056	70045	18.79%	2.293%
16	7.246	1919	1930	1953	rBV	149981	286251	76.78%	9.370%
17	7.561	2015	2028	2043	rBV2	20690	41930	11.25%	1.373%
18	7.879	2119	2127	2132	rBV3	2947	4758	1.28%	0.156%
19	8.030	2164	2174	2216	rBV	144515	372839	100.00%	12.205%
20	8.786	2398	2409	2437	rBV	171794	310718	83.34%	10.171%
21	9.873	2736	2747	2756	rBV9	2929	4935	1.32%	0.162%
22	10.156	2823	2835	2860	rBV	63854	110118	29.54%	3.605%
23	10.333	2877	2890	2901	rVB7	4547	9088	2.44%	0.297%
24	11.188	3145	3156	3180	rVV	171774	274323	73.58%	8.980%
25	11.561	3262	3272	3292	rBV	153975	255534	68.54%	8.365%

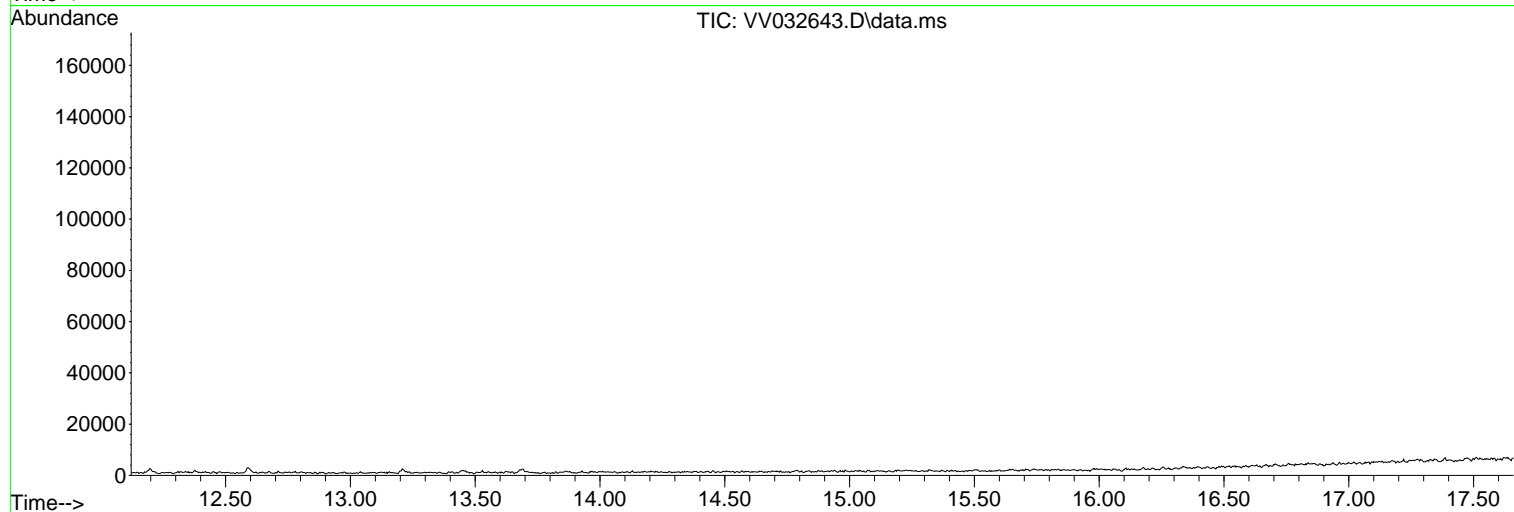
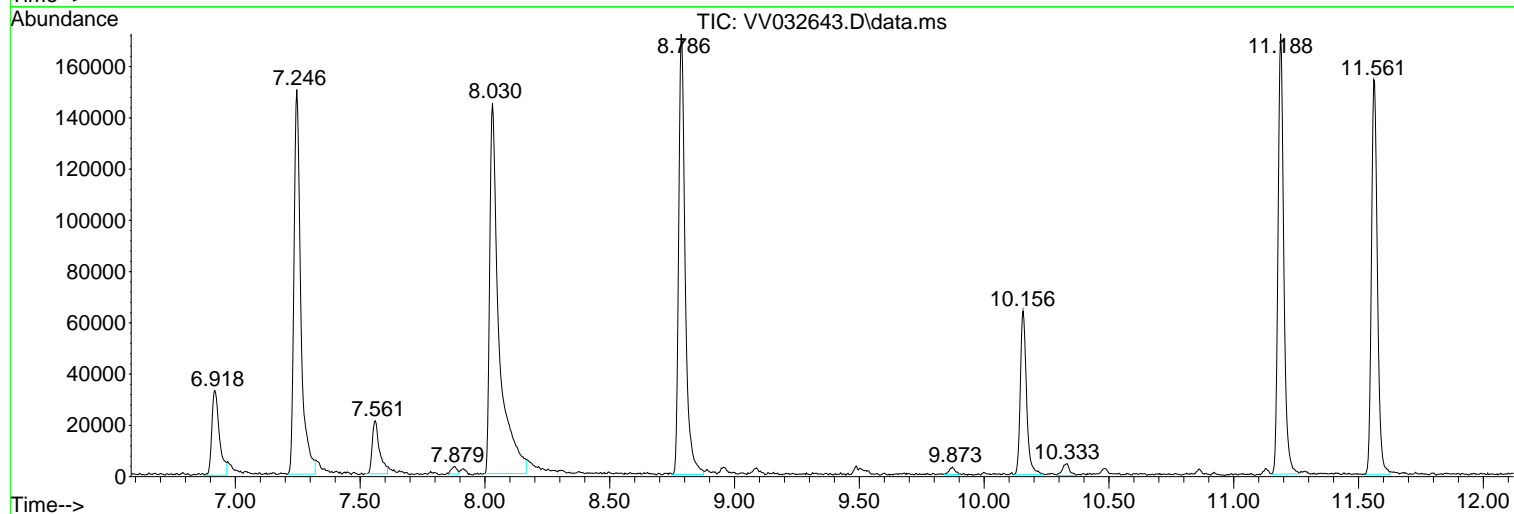
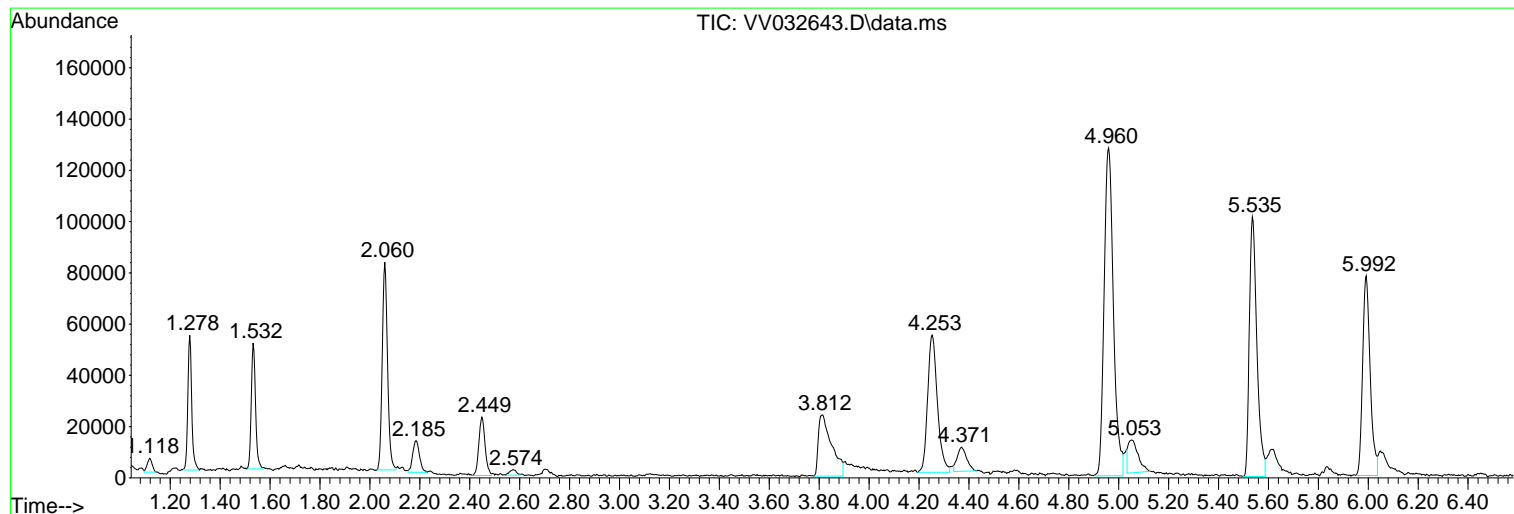
Sum of corrected areas: 3054846

Data Path : Z:\voasrv\HPCHEM1\MSVOA_V\Data\VV102523\
Data File : VV032643.D
Acq On : 25 Oct 2023 19:14
Operator : SY/MD
Sample : 04948-14
Misc : 25.0mL/MSVOA_V/WATER
ALS Vial : 25 Sample Multiplier: 1

Instrument :
MSVOA_V
ClientSampleId :
VHBLK002

Quant Method : Z:\voasrv\HPCHEM1\MSVOA_V\Method\SFAMVTR092923WMA.M
Quant Title : TRACE VOA SFAM1.0

TIC Library : C:\Database\NIST20.L
TIC Integration Parameters: LSCINT.P



Library Search Compound Report

Data Path : Z:\voasrv\HPCHEM1\MSVOA_V\Data\VV102523\
Data File : VV032643.D
Acq On : 25 Oct 2023 19:14
Operator : SY/MD
Sample : 04948-14
Misc : 25.0mL/MSVOA_V/WATER
ALS Vial : 25 Sample Multiplier: 1

Instrument :
MSVOA_V
ClientSampleId :
VHBLK002

Quant Method : Z:\voasrv\HPCHEM1\MSVOA_V\Method\SFAMVTR092923WMA.M
Quant Title : TRACE VOA SFAM1.0

TIC Library : C:\Database\NIST20.L
TIC Integration Parameters: LSCINT.P

No Library Search Compounds Detected

Data Path : Z:\voasrv\HPCHEM1\MSVOA_V\Data\VV102523\
Data File : VV032643.D
Acq On : 25 Oct 2023 19:14
Operator : SY/MD
Sample : 04948-14
Misc : 25.0mL/MSVOA_V/WATER
ALS Vial : 25 Sample Multiplier: 1

Instrument :
MSVOA_V
ClientSampleId :
VHBLK002

Quant Method : Z:\voasrv\HPCHEM1\MSVOA_V\Method\SFAMVTR092923WMA.M
Quant Title : TRACE VOA SFAM1.0

TIC Library : C:\Database\NIST0.L
TIC Integration Parameters: LSCINT.P

TIC Top Hit name	RT	EstConc	Units	Response	--Internal Standard--		
					#	RT	Resp Conc
