

Data Path : Z:\voasrv\HPCHEM1\MSVOA_V\DATA\VV110724\
 Data File : VV037955.D
 Acq On : 07 Nov 2024 15:08
 Operator : SY/MD
 Sample : P4715-07
 Misc : 25mL/MSVOA_V/WATER
 ALS Vial : 13 Sample Multiplier: 1

Instrument :
 MSVOA_V
ClientSampleId :
 C0AL7

Quant Time: Nov 08 01:28:38 2024
 Quant Method : Z:\voasrv\HPCHEM1\MSVOA_V\Method\SFAMVTR110624WMA.M
 Quant Title : TRACE VOA SFAM1.0
 QLast Update : Fri Nov 08 01:25:43 2024
 Response via : Initial Calibration

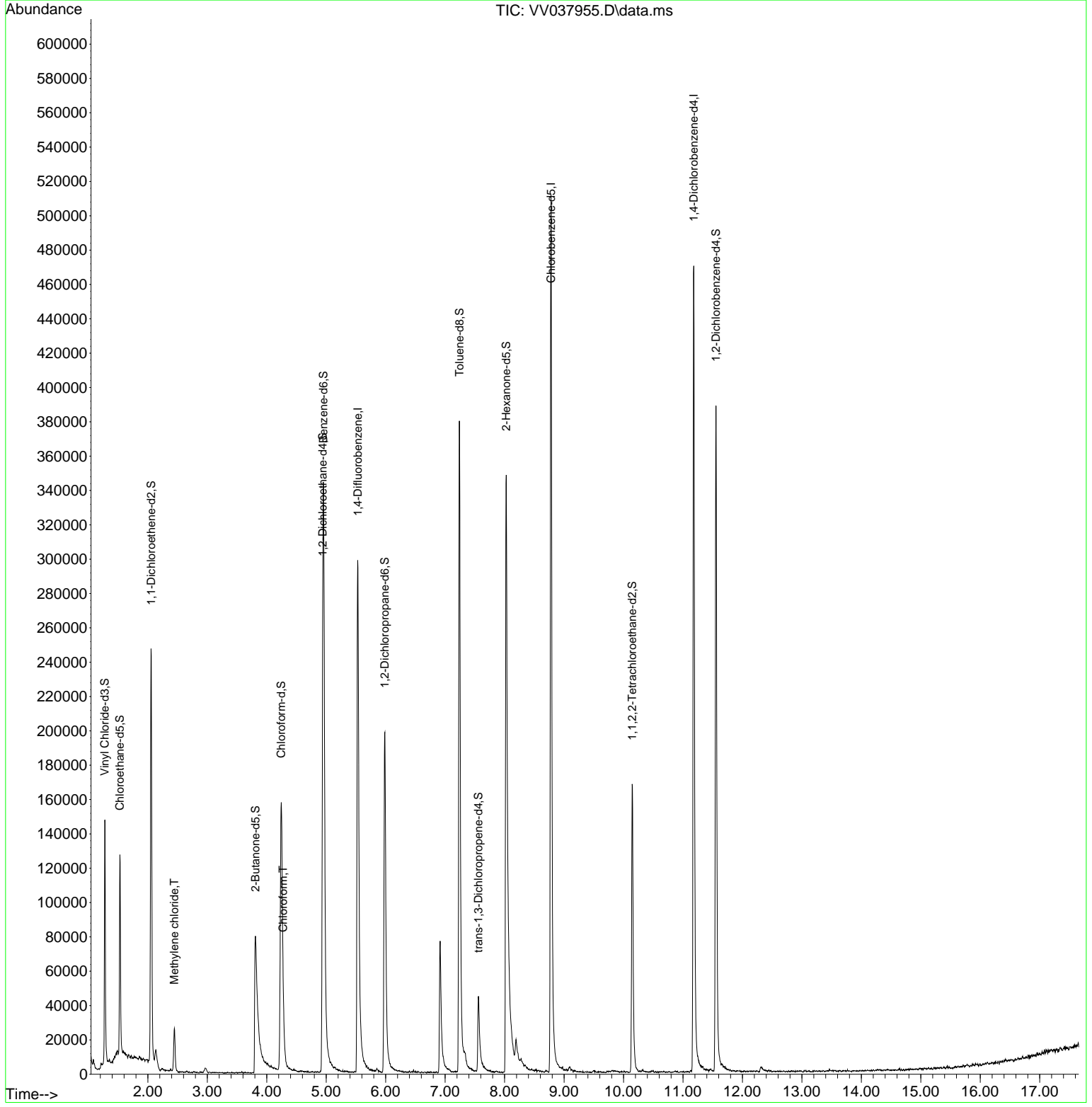
Compound	R. T.	QI on	Response	Conc	Units	Dev(Min)
Internal Standards						
1) 1,4-Difluorobenzene	5.529	114	284513	5.000	ug/L	0.00
28) Chlorobenzene-d5	8.780	117	306505	5.000	ug/L	0.00
58) 1,4-Dichlorobenzene-d4	11.181	152	137542	5.000	ug/L	0.00
System Monitoring Compounds						
4) Vinyl chloride-d3	1.275	65	94887	4.357	ug/L	0.00
Spiked Amount	5.000	Range	40 - 130	Recovery	=	87.200%
7) Chloroethane-d5	1.529	69	76843	4.329	ug/L	0.00
Spiked Amount	5.000	Range	65 - 130	Recovery	=	86.600%
11) 1,1-Dichloroethane-d2	2.053	65	40263	4.260	ug/L	0.00
Spiked Amount	5.000	Range	60 - 125	Recovery	=	85.200%
20) 2-Butanone-d5	3.809	46	172567	42.516	ug/L	-0.03
Spiked Amount	50.000	Range	40 - 130	Recovery	=	85.040%
24) Chloroform-d	4.243	84	178230	4.490	ug/L	0.00
Spiked Amount	5.000	Range	70 - 125	Recovery	=	89.800%
26) 1,2-Dichloroethane-d4	4.940	65	85304	4.808	ug/L	0.00
Spiked Amount	5.000	Range	70 - 130	Recovery	=	96.200%
32) Benzene-d6	4.953	84	333153	4.215	ug/L	0.00
Spiked Amount	5.000	Range	70 - 125	Recovery	=	84.200%
36) 1,2-Dichloropropane-d6	5.985	67	107388	4.652	ug/L	0.00
Spiked Amount	5.000	Range	60 - 140	Recovery	=	93.000%
41) Toluene-d8	7.239	98	278968	3.927	ug/L	0.00
Spiked Amount	5.000	Range	70 - 130	Recovery	=	78.600%
43) trans-1,3-Dichloroprop...	7.561	79	32506	3.642	ug/L	0.00
Spiked Amount	5.000	Range	55 - 130	Recovery	=	72.800%
46) 2-Hexanone-d5	8.027	63	151374	43.642	ug/L	0.00
Spiked Amount	50.000	Range	45 - 130	Recovery	=	87.280%
56) 1,1,2,2-Tetrachloroeth...	10.146	84	88850	4.774	ug/L	0.00
Spiked Amount	5.000	Range	65 - 120	Recovery	=	95.400%
66) 1,2-Dichlorobenzene-d4	11.554	152	111584	4.919	ug/L	0.00
Spiked Amount	5.000	Range	80 - 120	Recovery	=	98.400%
Target Compounds						
16) Methylene chloride	2.445	84	10723	0.473	ug/L	97
25) Chloroform	4.275	83	17591	0.439	ug/L	87

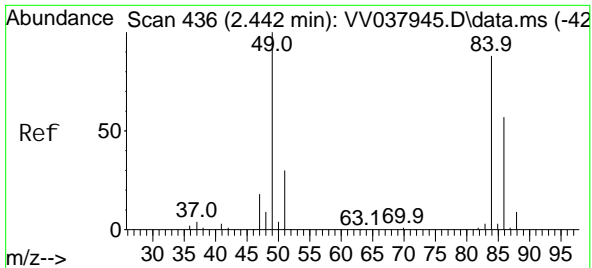
(#) = qualifier out of range (m) = manual integration (+) = signals summed

Data Path : Z:\voasrv\HPCHEM1\MSVOA_V\DATA\VV110724\
 Data File : VV037955.D
 Acq On : 07 Nov 2024 15:08
 Operator : SY/MD
 Sample : P4715-07
 Misc : 25mL/MSVOA_V/WATER
 ALS Vial : 13 Sample Multiplier: 1

Instrument :
 MSVOA_V
ClientSampleId :
 COAL7

Quant Time: Nov 08 01:28:38 2024
 Quant Method : Z:\voasrv\HPCHEM1\MSVOA_V\Method\SFAMVTR110624WMA.M
 Quant Title : TRACE VOA SFAM1.0
 QLast Update : Fri Nov 08 01:25:43 2024
 Response via : Initial Calibration



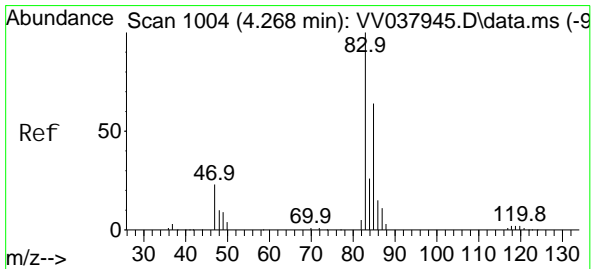
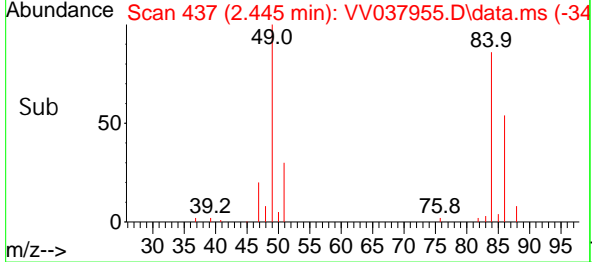
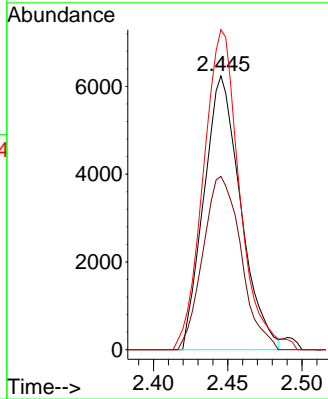
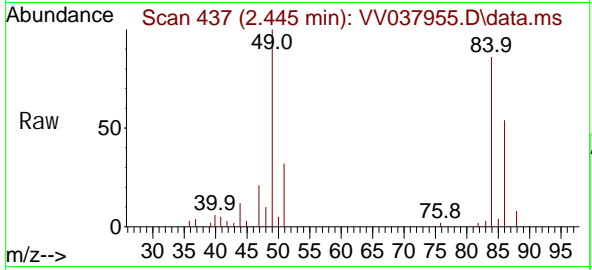


#16
 Methylene chloride
 Concen: 0.473 ug/L
 RT: 2.445 min Scan# 41
 Delta R.T. 0.003 min
 Lab File: VV037955.D
 Acq: 07 Nov 2024 15:08

Instrument :
 MSVOA_V
 ClientSampleId :
 COAL7

Tgt Ion: 84 Resp: 10723

Ion	Ratio	Lower	Upper
84	100		
86	63.3	45.0	83.6
49	116.9	79.2	147.2



#25
 Chloroform
 Concen: 0.439 ug/L
 RT: 4.275 min Scan# 1006
 Delta R.T. 0.006 min
 Lab File: VV037955.D
 Acq: 07 Nov 2024 15:08

Tgt Ion: 83 Resp: 17591

Ion	Ratio	Lower	Upper
83	100		
85	74.9	45.5	84.5

