

Data Path : Z:\voasrv\HPCHEM1\MSVOA_V\DATA\VV111424\
 Data File : VV038078.D
 Acq On : 14 Nov 2024 09:03
 Operator : SY/MD
 Sample : VSTD0.05
 Misc : 25mL/MSVOA_V/WATER
 ALS Vial : 1 Sample Multiplier: 1

Instrument :
 MSVOA_V
ClientSampleId :

Quant Time: Nov 15 00:02:33 2024
 Quant Method : Z:\voasrv\HPCHEM1\MSVOA_V\Method\SFAMVSIM111424.M
 Quant Title : TRACE VOA SOM01.0
 QLast Update : Fri Nov 15 00:00:58 2024
 Response via : Initial Calibration

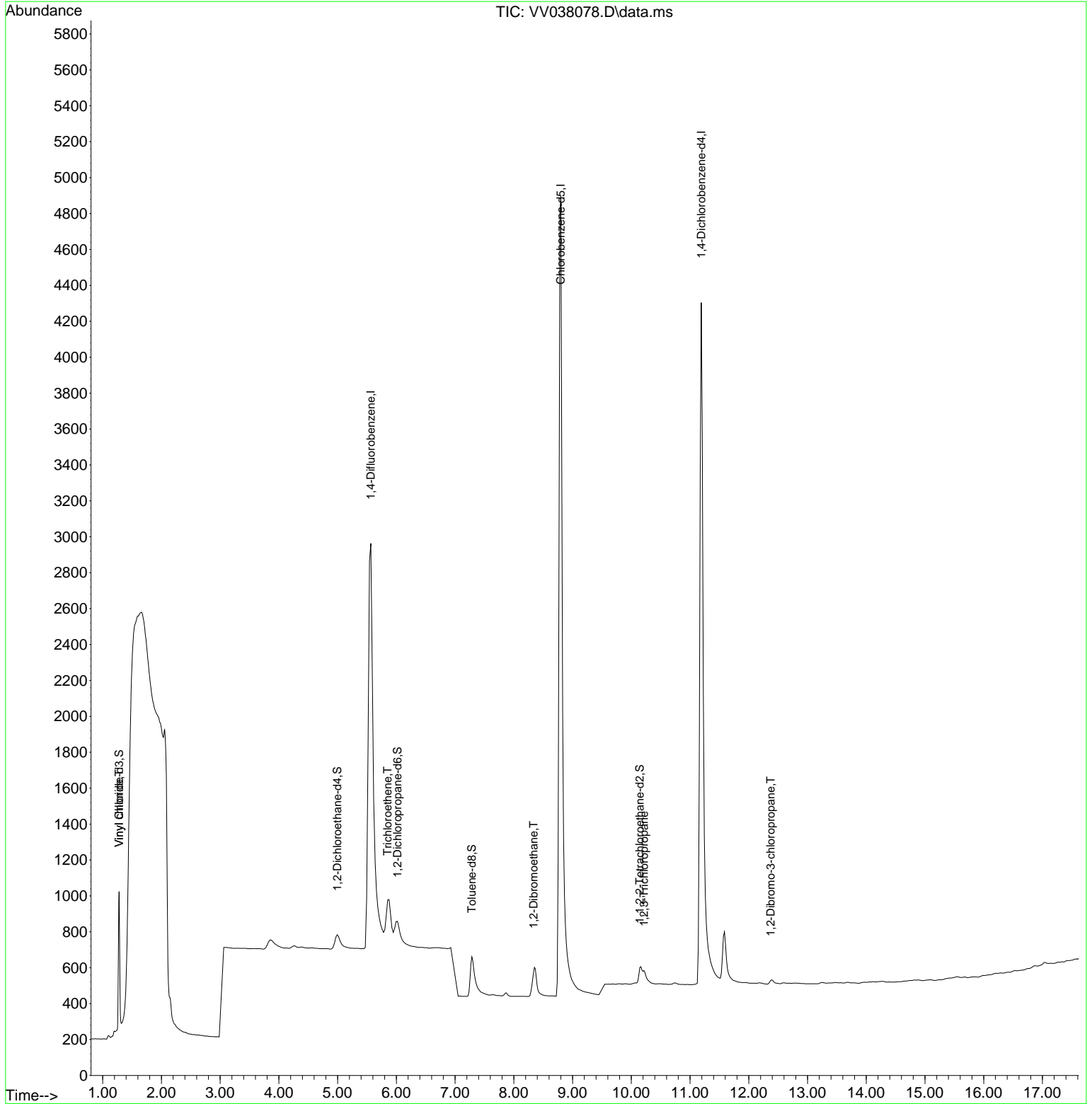
Compound	R. T.	QI on	Response	Conc	Units	Dev(Min)
Internal Standards						
1) 1,4-Difluorobenzene	5.566	114	10272	0.500	ug/L	0.00
5) Chlorobenzene-d5	8.800	117	10028	0.500	ug/L	0.00
11) 1,4-Dichlorobenzene-d4	11.191	152	4862	0.500	ug/L	0.00
System Monitoring Compounds						
2) Vinyl chloride-d3	1.280	65	432	0.041	ug/L	0.00
4) 1,2-Dichloroethane-d4	4.993	65	226	0.036	ug/L	0.02
7) 1,2-Dichloropropane-d6	6.019	67	292	0.036	ug/L	0.02
8) Toluene-d8	7.284	98	745	0.036	ug/L	0.03
10) 1,1,2,2-Tetrachloroeth...	10.146	84	259	0.040	ug/L	0.00
Target Compounds						
3) Vinyl chloride	1.280	62	487	0.047	ug/L #	74
6) Trichloroethene	5.852	95	352	0.048	ug/L	91
9) 1,2-Dibromoethane	8.336	107	227	0.045	ug/L #	86
12) 1,2,3-Trichloropropane	10.214	75	173	0.041	ug/L #	87
13) 1,2-Dibromo-3-chloropr...	12.374	75	33	0.040	ug/L	96

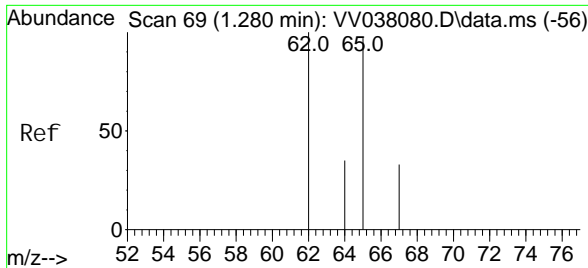
(#) = qualifier out of range (m) = manual integration (+) = signals summed

Data Path : Z:\voasrv\HPCHEM1\MSVOA_V\DATA\VV111424\
 Data File : VV038078.D
 Acq On : 14 Nov 2024 09:03
 Operator : SY/MD
 Sample : VSTD0.05
 Misc : 25mL/MSVOA_V/WATER
 ALS Vial : 1 Sample Multiplier: 1

Instrument :
 MSVOA_V
 ClientSampleId :

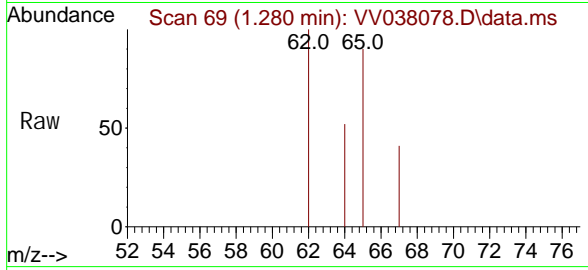
Quant Time: Nov 15 00:02:33 2024
 Quant Method : Z:\voasrv\HPCHEM1\MSVOA_V\Method\SFAMVSI M111424.M
 Quant Title : TRACE VOA SOM01.0
 QLast Update : Fri Nov 15 00:00:58 2024
 Response via : Initial Calibration



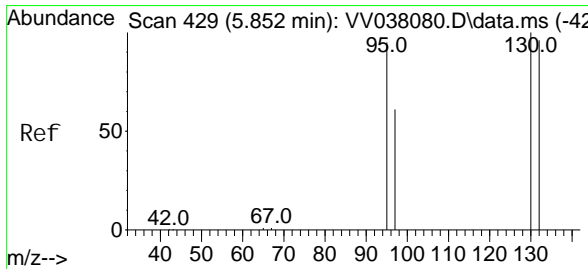
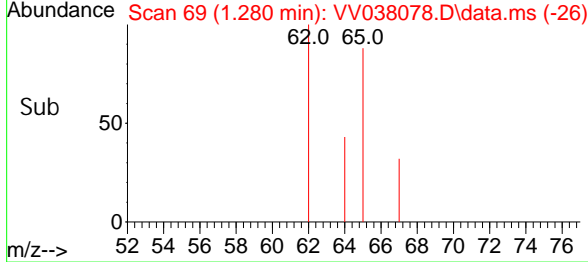
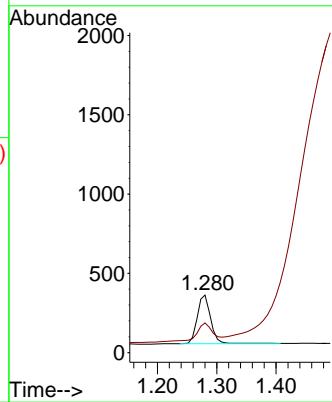


#3
 Vinyl chloride
 Concen: 0.047 ug/L
 RT: 1.280 min Scan# 61
 Delta R.T. 0.000 min
 Lab File: VV038078.D
 Acq: 14 Nov 2024 09:03

Instrument : MSVOA_V
 ClientSampleId :

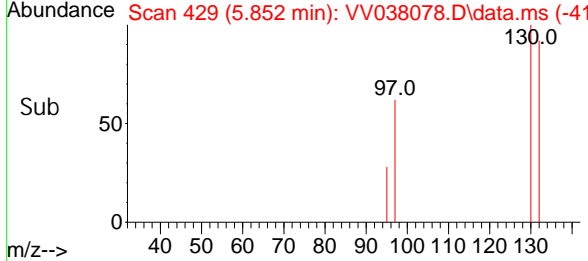
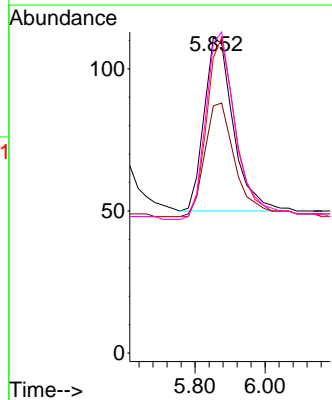
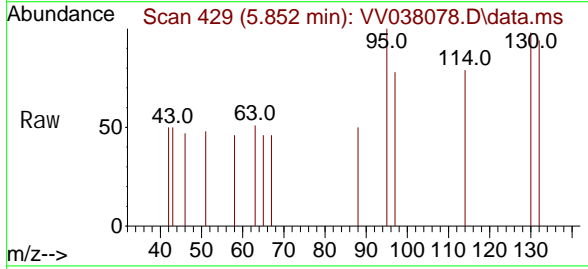


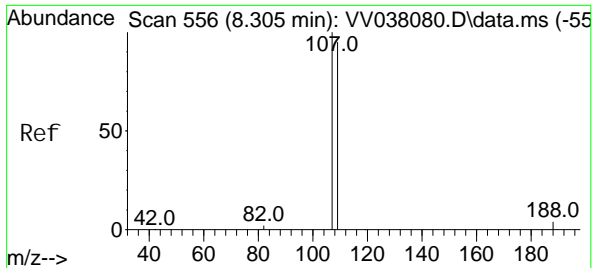
Tgt Ion: 62 Resp: 487
 Ion Ratio Lower Upper
 62 100
 64 51.5 25.3 47.1#



#6
 Trichloroethene
 Concen: 0.048 ug/L
 RT: 5.852 min Scan# 429
 Delta R.T. 0.000 min
 Lab File: VV038078.D
 Acq: 14 Nov 2024 09:03

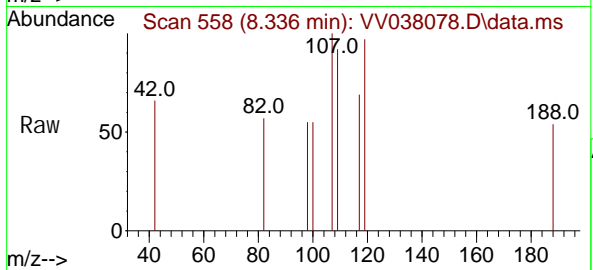
Tgt Ion: 95 Resp: 352
 Ion Ratio Lower Upper
 95 100
 97 78.4 46.5 86.5
 132 93.7 70.3 130.7
 130 98.2 73.4 136.4



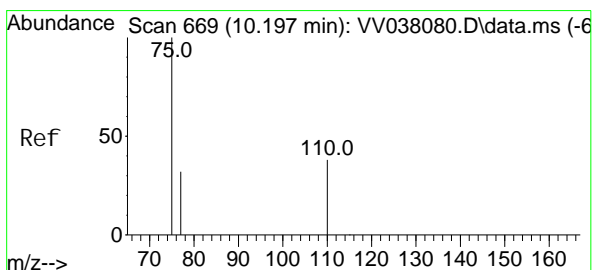
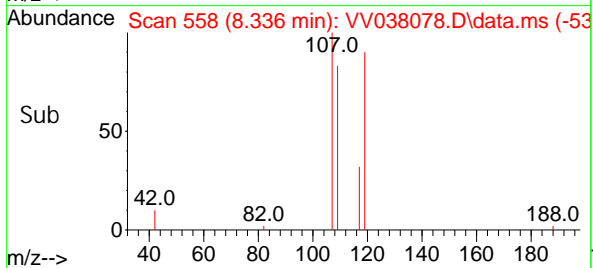
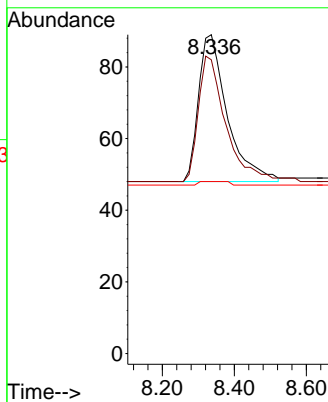


#9
 1, 2-Di bromoethane
 Concen: 0.045 ug/L
 RT: 8.336 min Scan# 51
 Delta R.T. 0.031 min
 Lab File: VV038078.D
 Acq: 14 Nov 2024 09:03

Instrument :
 MSVOA_V
 ClientSampleId :

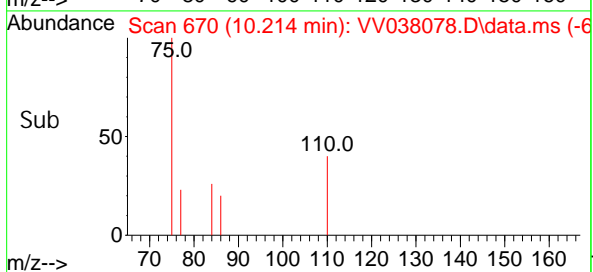
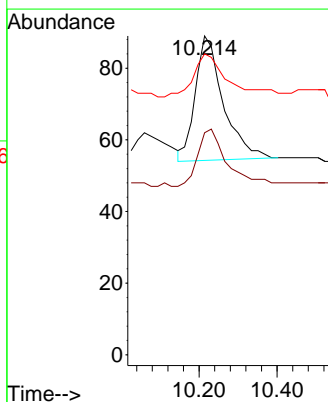
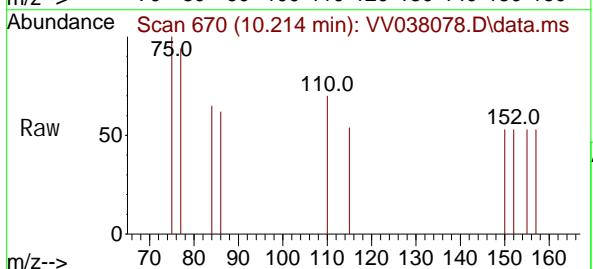


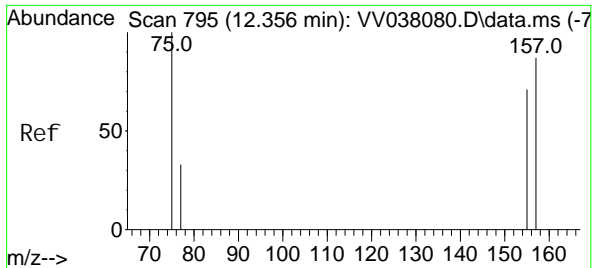
Tgt Ion: 107 Resp: 227
 Ion Ratio Lower Upper
 107 100
 109 92.1 66.5 123.5
 188 53.9 8.2 12.2#



#12
 1, 2, 3-Tri chloropropane
 Concen: 0.041 ug/L
 RT: 10.214 min Scan# 670
 Delta R.T. 0.017 min
 Lab File: VV038078.D
 Acq: 14 Nov 2024 09:03

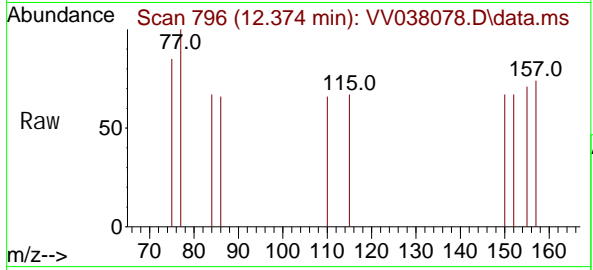
Tgt Ion: 75 Resp: 173
 Ion Ratio Lower Upper
 75 100
 110 49.1 34.3 51.5
 77 42.8 26.6 40.0#





#13
 1, 2-Di bromo-3-chl oropropane
 Concen: 0.040 ug/L
 RT: 12.374 min Scan# 796
 Del ta R.T. 0.017 min
 Lab File: VV038078.D
 Acq: 14 Nov 2024 09:03

Instrument :
 MSVOA_V
 ClientSampleId :



Tgt Ion: 75 Resp: 33

Ion	Ratio	Lower	Upper
75	100		
157	87.1	69.4	104.0
155	83.9	61.3	91.9

