

Data Path : Z:\voasrv\HPCHEM1\MSVOA_V\Data\VW111723\
 Data File : VV032978.D
 Acq On : 17 Nov 2023 01:46
 Operator : SY/MD
 Sample : 05341-12
 Misc : 25mL/MSVOA_V/WATER
 ALS Vial : 3 Sample Multiplier: 1

Instrument :
 MSVOA_V
 ClientSampleId :

Quant Time: Nov 17 04:57:39 2023
 Quant Method : Z:\voasrv\HPCHEM1\MSVOA_V\Method\SFAMVTR111723WMA.M
 Quant Title : TRACE VOA SFAM1.0
 QLast Update : Fri Nov 17 00:51:54 2023
 Response via : Initial Calibration

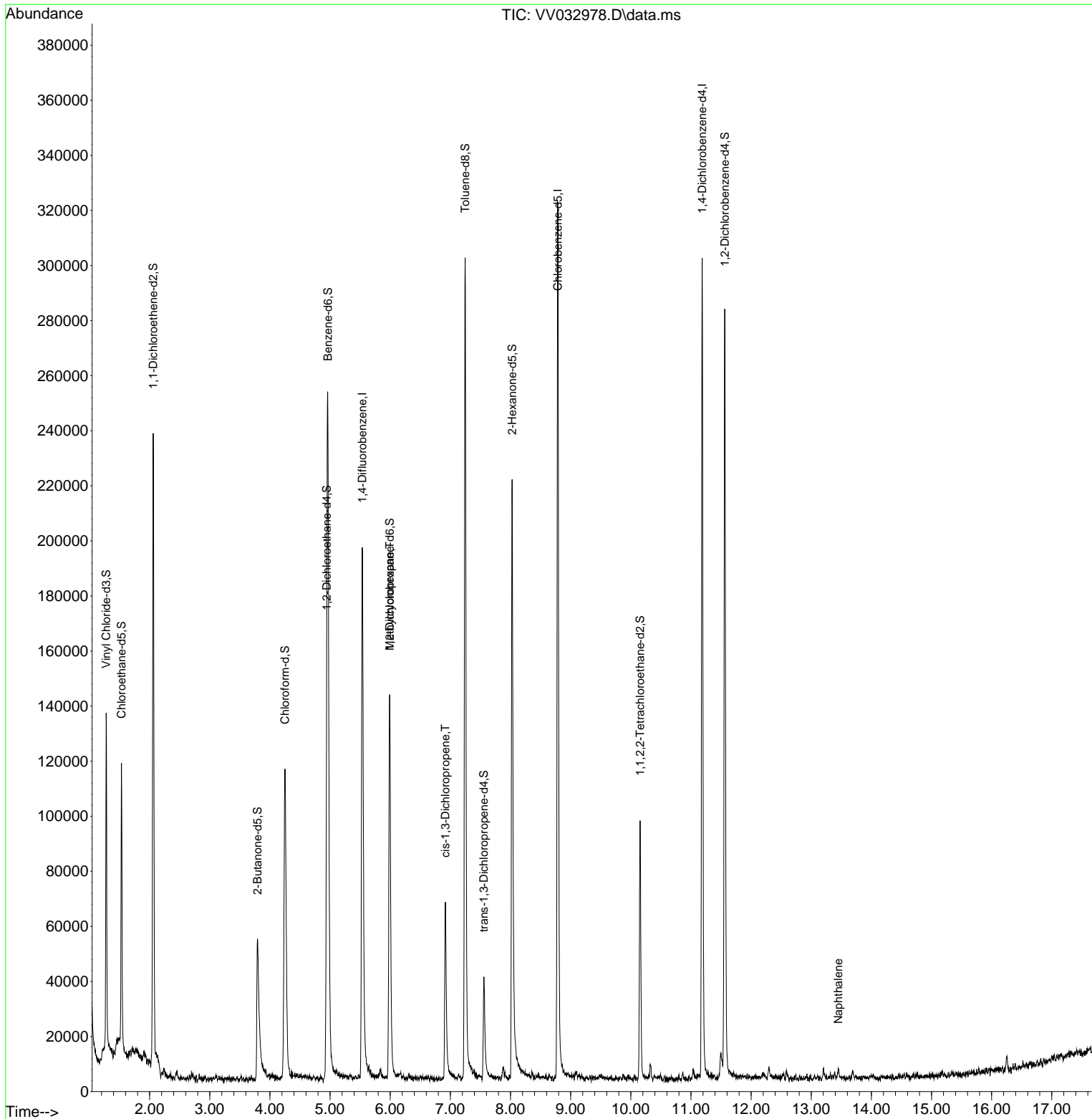
Compound	R.T.	QIon	Response	Conc	Units	Dev(Min)
Internal Standards						
1) 1,4-Difluorobenzene	5.535	114	174512	5.000	ug/L	0.00
28) Chlorobenzene-d5	8.786	117	177774	5.000	ug/L	0.00
58) 1,4-Dichlorobenzene-d4	11.188	152	78101	5.000	ug/L	0.00
System Monitoring Compounds						
4) Vinyl Chloride-d3	1.278	65	77926	5.246	ug/L	0.00
Spiked Amount	5.000	Range 40 - 130	Recovery	=	105.000%	
7) Chloroethane-d5	1.532	69	63703	4.473	ug/L	0.00
Spiked Amount	5.000	Range 65 - 130	Recovery	=	89.400%	
11) 1,1-Dichloroethene-d2	2.060	65	38918	5.942	ug/L	0.00
Spiked Amount	5.000	Range 60 - 125	Recovery	=	118.800%	
20) 2-Butanone-d5	3.793	46	83027	41.955	ug/L	0.00
Spiked Amount	50.000	Range 40 - 130	Recovery	=	83.900%	
24) Chloroform-d	4.249	84	124127	4.860	ug/L	0.00
Spiked Amount	5.000	Range 70 - 125	Recovery	=	97.200%	
26) 1,2-Dichloroethane-d4	4.944	65	54881	4.867	ug/L	0.00
Spiked Amount	5.000	Range 70 - 130	Recovery	=	97.400%	
32) Benzene-d6	4.963	84	241007	5.157	ug/L	0.00
Spiked Amount	5.000	Range 70 - 125	Recovery	=	103.200%	
36) 1,2-Dichloropropane-d6	5.992	67	66758	5.032	ug/L	0.00
Spiked Amount	5.000	Range 60 - 140	Recovery	=	100.600%	
41) Toluene-d8	7.246	98	202674	4.609	ug/L	0.00
Spiked Amount	5.000	Range 70 - 130	Recovery	=	92.200%	
43) trans-1,3-Dichloroprop...	7.558	79	23076	4.462	ug/L	0.00
Spiked Amount	5.000	Range 55 - 130	Recovery	=	89.200%	
46) 2-Hexanone-d5	8.027	63	76503	43.265	ug/L	0.00
Spiked Amount	50.000	Range 45 - 130	Recovery	=	86.520%	
56) 1,1,2,2-Tetrachloroeth...	10.156	84	43988	4.495	ug/L	0.00
Spiked Amount	5.000	Range 65 - 120	Recovery	=	89.800%	
66) 1,2-Dichlorobenzene-d4	11.564	152	71883	5.289	ug/L	0.00
Spiked Amount	5.000	Range 80 - 120	Recovery	=	105.800%	
Target Compounds						
35) Methylcyclohexane	5.992	83	16593	0.867	ug/L #	22
39) cis-1,3-Dichloropropene	6.918	75	1796	0.100	ug/L	84
71) Naphthalene	13.448	128	1726	0.080	ug/L #	91

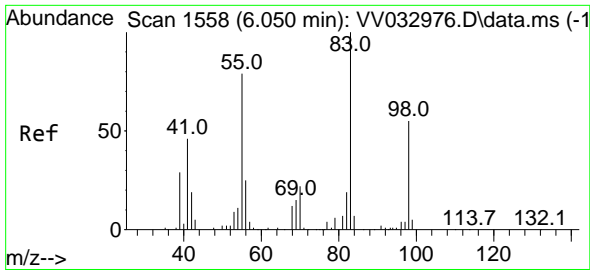
(#) = qualifier out of range (m) = manual integration (+) = signals summed

Data Path : Z:\voasrv\HPCHEM1\MSVOA_V\Data\VV111723\
 Data File : VV032978.D
 Acq On : 17 Nov 2023 01:46
 Operator : SY/MD
 Sample : 05341-12
 Misc : 25mL/MSVOA_V/WATER
 ALS Vial : 3 Sample Multiplier: 1

Instrument :
 MSVOA_V
 ClientSampleId :

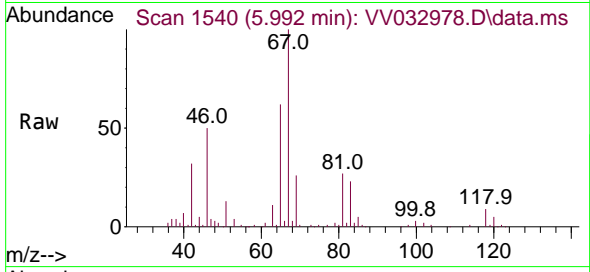
Quant Time: Nov 17 04:57:39 2023
 Quant Method : Z:\voasrv\HPCHEM1\MSVOA_V\Method\SFAMVTR111723WMA.M
 Quant Title : TRACE VOA SFAM1.0
 QLast Update : Fri Nov 17 00:51:54 2023
 Response via : Initial Calibration



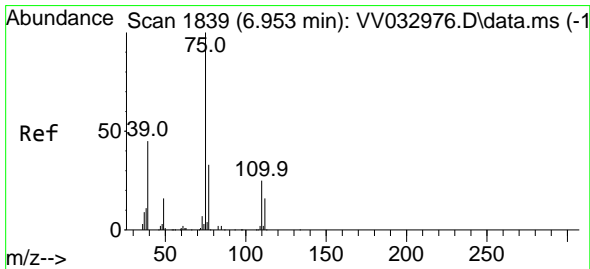
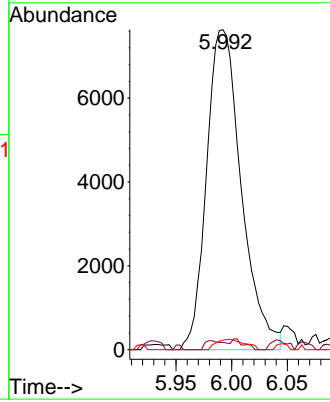
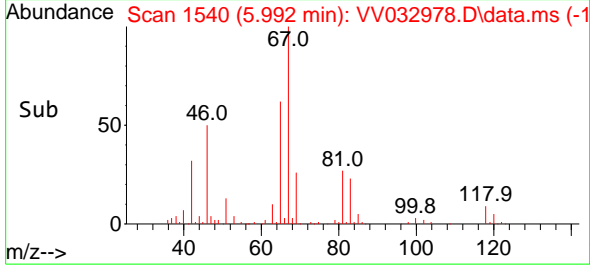


#35
 Methylcyclohexane
 Concen: 0.867 ug/L
 RT: 5.992 min Scan# 1540
 Delta R.T. -0.058 min
 Lab File: VV032978.D
 Acq: 17 Nov 2023 01:46

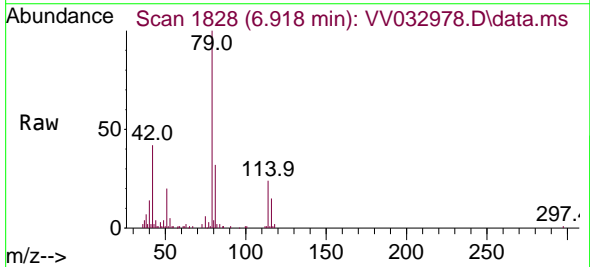
Instrument : MSVOA_V
 ClientSampleId :



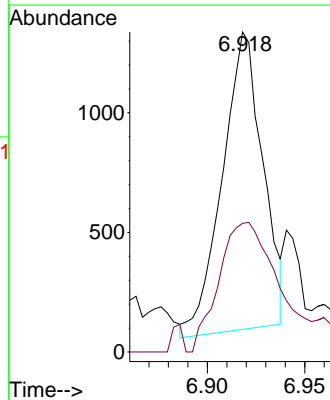
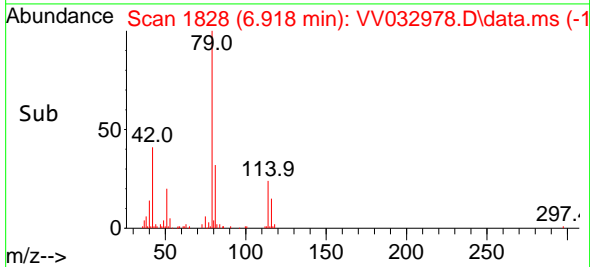
Tgt Ion: 83 Resp: 16593
 Ion Ratio Lower Upper
 83 100
 55 1.1 57.6 86.4#
 98 2.7 39.0 58.4#

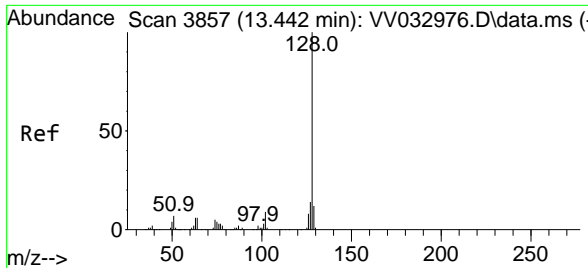


#39
 cis-1,3-Dichloropropene
 Concen: 0.100 ug/L
 RT: 6.918 min Scan# 1828
 Delta R.T. -0.035 min
 Lab File: VV032978.D
 Acq: 17 Nov 2023 01:46



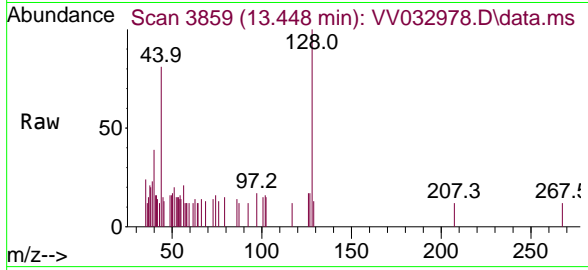
Tgt Ion: 75 Resp: 1796
 Ion Ratio Lower Upper
 75 100
 77 40.2 22.1 41.1





#71
 Naphthalene
 Concen: 0.080 ug/L
 RT: 13.448 min Scan# 3857
 Delta R.T. 0.007 min
 Lab File: VV032978.D
 Acq: 17 Nov 2023 01:46

Instrument : MSVOA_V
 ClientSampleId :



Tgt Ion:128 Resp: 1726

Ion	Ratio	Lower	Upper
128	100		
129	5.5	8.8	13.2#
127	14.4	10.3	15.5

