

Data Path : Z:\voasrv\HPCHEM1\MSVOA\_V\DATA\VV111924\  
 Data File : VV038194.D  
 Acq On : 19 Nov 2024 22:12  
 Operator : SY/MD  
 Sample : P4882-07  
 Misc : 25mL/MSVOA\_V/WATER  
 ALS Vial : 31 Sample Multiplier: 1

Instrument :  
 MSVOA\_V  
 ClientSampleId :

Quant Time: Nov 20 00:22:43 2024  
 Quant Method : Z:\voasrv\HPCHEM1\MSVOA\_V\Method\SFAMVTR111924WMA.M  
 Quant Title : TRACE VOA SFAM1.0  
 QLast Update : Tue Nov 19 22:47:22 2024  
 Response via : Initial Calibration

Compound	R.T.	QIon	Response	Conc	Units	Dev(Min)
Internal Standards						
1) 1,4-Difluorobenzene	5.529	114	229177	5.000	ug/L	0.00
28) Chlorobenzene-d5	8.780	117	252747	5.000	ug/L	0.00
58) 1,4-Dichlorobenzene-d4	11.178	152	108767	5.000	ug/L	0.00

System Monitoring Compounds						
4) Vinyl Chloride-d3	1.275	65	78743	4.483	ug/L	0.00
Spiked Amount	5.000	Range 40 - 130	Recovery	=	89.600%	
7) Chloroethane-d5	1.529	69	75362	5.304	ug/L	0.00
Spiked Amount	5.000	Range 65 - 130	Recovery	=	106.000%	
11) 1,1-Dichloroethene-d2	2.053	65	36560	4.836	ug/L	0.00
Spiked Amount	5.000	Range 60 - 125	Recovery	=	96.800%	
20) 2-Butanone-d5	3.780	46	180779	51.445	ug/L	-0.02
Spiked Amount	50.000	Range 40 - 130	Recovery	=	102.900%	
24) Chloroform-d	4.240	84	179215	5.257	ug/L	0.00
Spiked Amount	5.000	Range 70 - 125	Recovery	=	105.200%	
26) 1,2-Dichloroethane-d4	4.937	65	88388	5.778	ug/L	0.00
Spiked Amount	5.000	Range 70 - 130	Recovery	=	115.600%	
32) Benzene-d6	4.953	84	316464	4.845	ug/L	0.00
Spiked Amount	5.000	Range 70 - 125	Recovery	=	96.800%	
36) 1,2-Dichloropropane-d6	5.982	67	106565	5.301	ug/L	0.00
Spiked Amount	5.000	Range 60 - 140	Recovery	=	106.000%	
41) Toluene-d8	7.239	98	257140	4.254	ug/L	0.00
Spiked Amount	5.000	Range 70 - 130	Recovery	=	85.000%	
43) trans-1,3-Dichloroprop...	7.558	79	35473	4.747	ug/L	0.00
Spiked Amount	5.000	Range 55 - 130	Recovery	=	95.000%	
46) 2-Hexanone-d5	8.018	63	163159	56.164	ug/L	0.00
Spiked Amount	50.000	Range 45 - 130	Recovery	=	112.320%	
56) 1,1,2,2-Tetrachloroeth...	10.146	84	92410	5.415	ug/L	0.00
Spiked Amount	5.000	Range 65 - 120	Recovery	=	108.400%	
66) 1,2-Dichlorobenzene-d4	11.554	152	105465	5.691	ug/L	0.00
Spiked Amount	5.000	Range 80 - 120	Recovery	=	113.800%	

Target Compounds					Qvalue
2) Dichlorodifluoromethane	1.105	85	96	0.004	ug/L # 42
3) Chloromethane	1.211	50	1309	0.070	ug/L 84
5) Vinyl chloride	1.278	62	542	0.026	ug/L # 1
6) Bromomethane	1.484	94	427	0.052	ug/L 88
8) Chloroethane	1.548	64	206	0.015	ug/L # 43
9) Trichlorofluoromethane	1.706	101	3351	0.111	ug/L 93
10) 1,1,2-Trichloro-1,2,2-...	2.056	101	2316	0.135	ug/L # 68
12) 1,1-Dichloroethene	2.056	96	1288	0.079	ug/L # 1
14) Carbon disulfide	2.233	76	1148	0.022	ug/L # 82
15) Methyl Acetate	2.378	43	204	0.032	ug/L # 47
16) Methylene chloride	2.442	84	15523	0.832	ug/L 96
17) Methyl tert-butyl Ether	2.690	73	850	0.023	ug/L # 63
18) trans-1,2-Dichloroethene	2.693	96	127	0.007	ug/L # 1
19) 1,1-Dichloroethane	3.111	63	2200	0.070	ug/L # 76
21) 2-Butanone	3.899	43	235	0.063	ug/L # 49
22) cis-1,2-Dichloroethene	3.818	96	2760	0.155	ug/L 97
25) Chloroform	4.272	83	19661	0.587	ug/L 95
27) 1,2-Dichloroethane	4.995	62	123	0.007	ug/L # 72
29) 1,1,1-Trichloroethane	4.506	97	14210	0.469	ug/L 98

Data Path : Z:\voasrv\HPCHEM1\MSVOA\_V\DATA\VV111924\  
 Data File : VV038194.D  
 Acq On : 19 Nov 2024 22:12  
 Operator : SY/MD  
 Sample : P4882-07  
 Misc : 25mL/MSVOA\_V/WATER  
 ALS Vial : 31 Sample Multiplier: 1

Instrument :  
 MSVOA\_V  
 ClientSampleId :

Quant Time: Nov 20 00:22:43 2024  
 Quant Method : Z:\voasrv\HPCHEM1\MSVOA\_V\Method\SFAMVTR111924WMA.M  
 Quant Title : TRACE VOA SFAM1.0  
 QLast Update : Tue Nov 19 22:47:22 2024  
 Response via : Initial Calibration

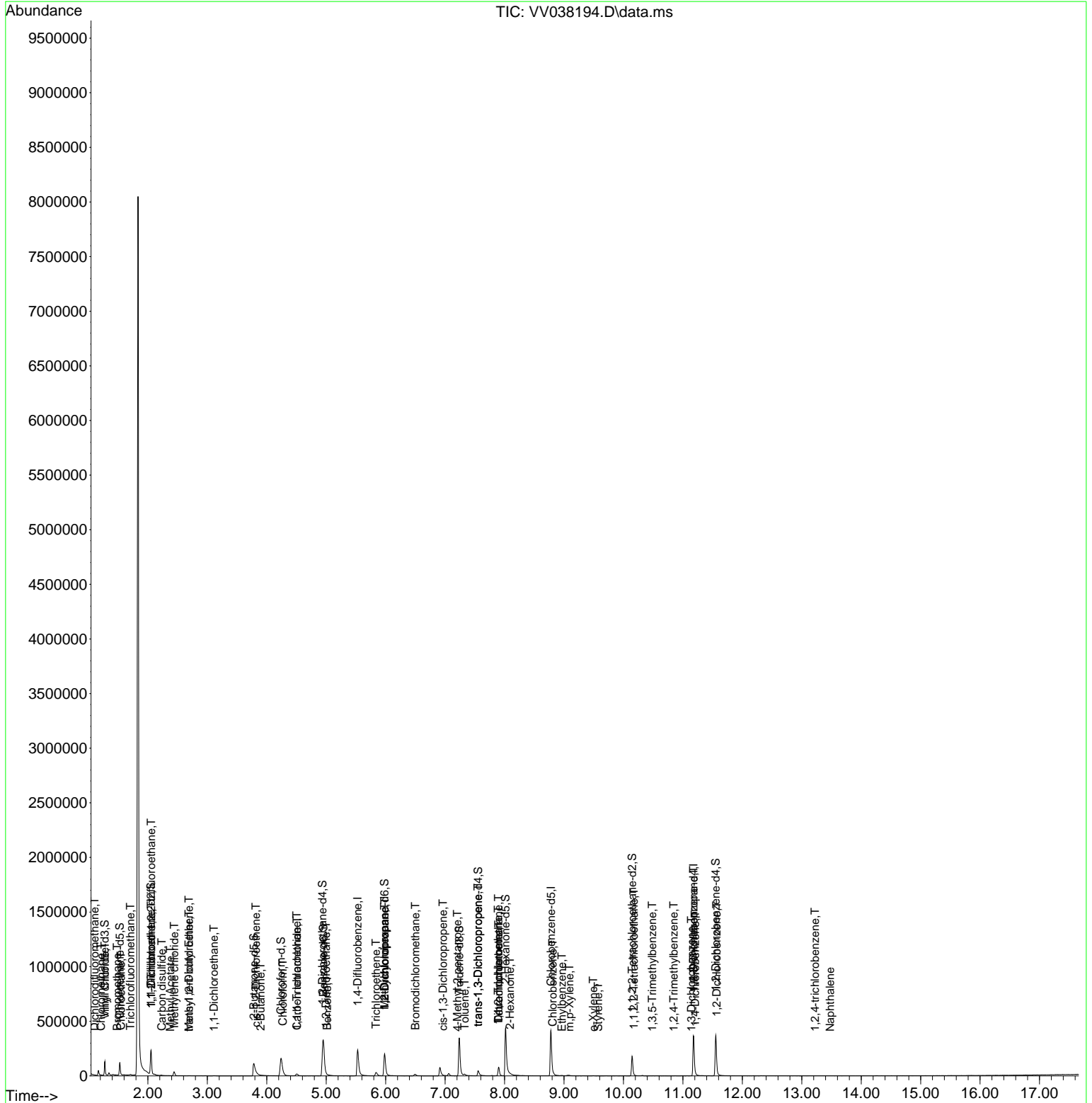
Compound	R.T.	QIon	Response	Conc	Units	Dev(Min)
31) Carbon tetrachloride	4.510	117	2262	0.085	ug/L	82
33) Benzene	5.018	78	893	0.013	ug/L	100
34) Trichloroethene	5.838	95	12242	0.633	ug/L	93
35) Methylcyclohexane	5.982	83	25972	0.949	ug/L #	19
37) 1,2-Dichloropropane	5.986	63	11907	0.670	ug/L #	85
38) Bromodichloromethane	6.500	83	52	0.002	ug/L #	65
39) cis-1,3-Dichloropropene	6.966	75	161	0.006	ug/L #	41
40) 4-Methyl-2-pentanone	7.204	43	415	0.045	ug/L #	72
42) Toluene	7.330	91	10670	0.142	ug/L	89
44) trans-1,3-Dichloropropene	7.555	75	1449	0.069	ug/L	97
45) 1,1,2-Trichloroethane	7.895	97	117	0.008	ug/L #	45
47) Tetrachloroethene	7.902	164	20020	1.287	ug/L	94
48) 2-Hexanone	8.092	43	2631	0.390	ug/L #	42
49) Dibromochloromethane	7.899	129	15622	0.994	ug/L #	11
51) Chlorobenzene	8.812	112	8884	0.171	ug/L	98
52) Ethylbenzene	8.963	91	3208	0.040	ug/L	96
53) m,p-Xylene	9.092	106	1929	0.064	ug/L	85
54) o-Xylene	9.490	106	508	0.017	ug/L	61
55) Styrene	9.577	104	188	0.004	ug/L #	33
57) 1,1,2,2-Tetrachloroethane	10.175	83	1955	0.116	ug/L #	76
61) 1,2,3-Trichloropropane	11.178	75	11866	1.274	ug/L #	62
62) 1,3,5-Trimethylbenzene	10.484	105	118	0.002	ug/L #	28
63) 1,2,4-Trimethylbenzene	10.847	105	41	0.001	ug/L #	30
64) 1,3-Dichlorobenzene	11.143	146	277	0.008	ug/L #	68
65) 1,4-Dichlorobenzene	11.207	146	825	0.024	ug/L #	83
67) 1,2-Dichlorobenzene	11.571	146	2012	0.065	ug/L #	81
70) 1,2,4-trichlorobenzene	13.223	180	46	0.002	ug/L #	1
71) Naphthalene	13.477	128	75	0.002	ug/L #	70

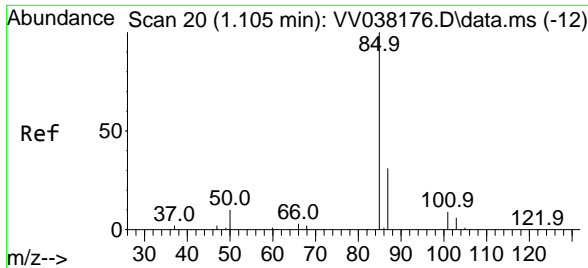
(#) = qualifier out of range (m) = manual integration (+) = signals summed

Data Path : Z:\voasrv\HPCHEM1\MSVOA\_V\DATA\VV11924\  
 Data File : VV038194.D  
 Acq On : 19 Nov 2024 22:12  
 Operator : SY/MD  
 Sample : P4882-07  
 Misc : 25mL/MSVOA\_V/WATER  
 ALS Vial : 31 Sample Multiplier: 1

Instrument :  
 MSVOA\_V  
 ClientSampleId :

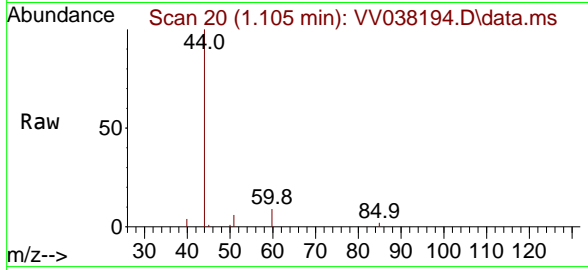
Quant Time: Nov 20 00:22:43 2024  
 Quant Method : Z:\voasrv\HPCHEM1\MSVOA\_V\Method\SFAMVTR11924WMA.M  
 Quant Title : TRACE VOA SFAM1.0  
 QLast Update : Tue Nov 19 22:47:22 2024  
 Response via : Initial Calibration



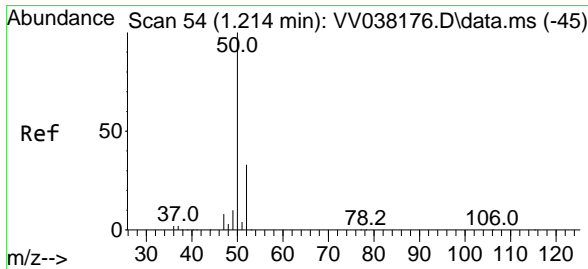
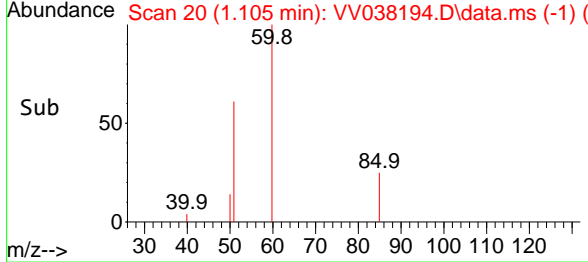
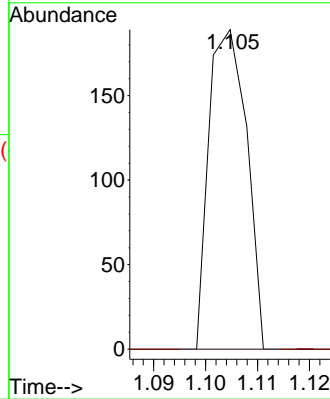


#2  
 Dichlorodifluoromethane  
 Concen: 0.004 ug/L  
 RT: 1.105 min Scan# 20  
 Delta R.T. 0.000 min  
 Lab File: VV038194.D  
 Acq: 19 Nov 2024 22:12

Instrument : MSVOA\_V  
 ClientSampleId :

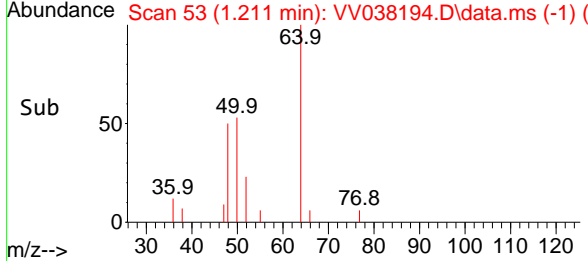
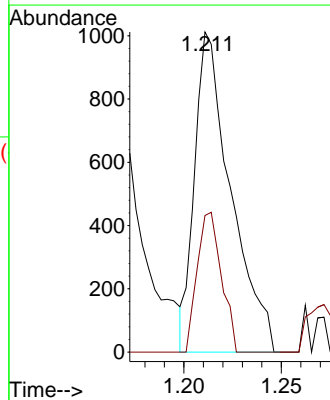
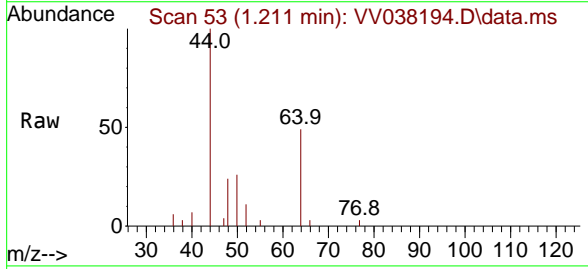


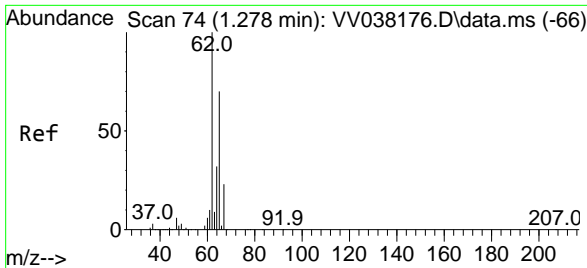
Tgt Ion: 85 Resp: 96  
 Ion Ratio Lower Upper  
 85 100  
 87 0.0 26.5 39.7#



#3  
 Chloromethane  
 Concen: 0.070 ug/L  
 RT: 1.211 min Scan# 53  
 Delta R.T. -0.003 min  
 Lab File: VV038194.D  
 Acq: 19 Nov 2024 22:12

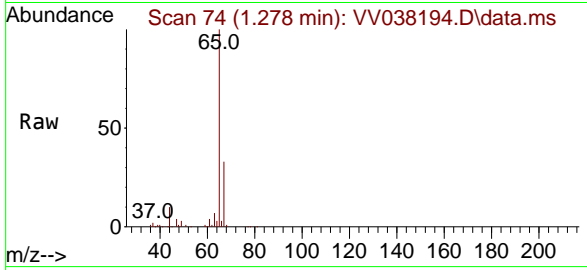
Tgt Ion: 50 Resp: 1309  
 Ion Ratio Lower Upper  
 50 100  
 52 42.7 23.5 43.7



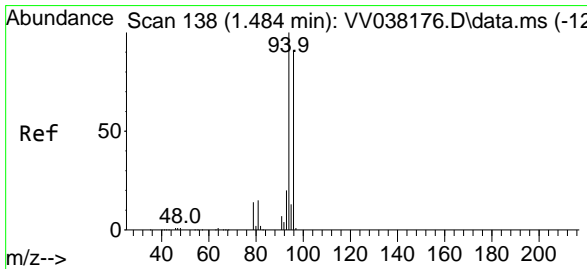
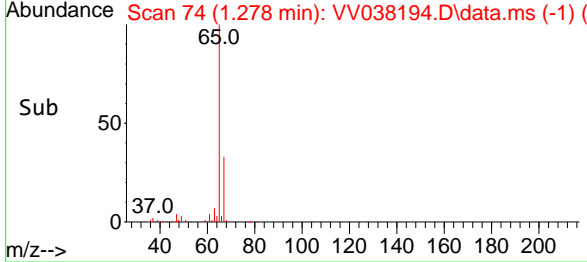
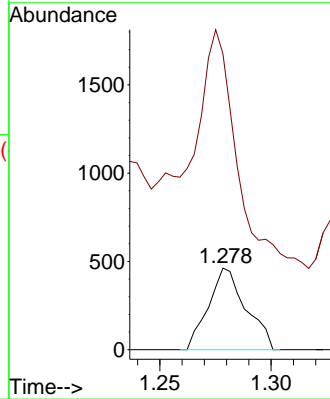


#5  
 Vinyl chloride  
 Concen: 0.026 ug/L  
 RT: 1.278 min Scan# 74  
 Delta R.T. 0.000 min  
 Lab File: VV038194.D  
 Acq: 19 Nov 2024 22:12

Instrument :  
 MSVOA\_V  
 ClientSampleId :

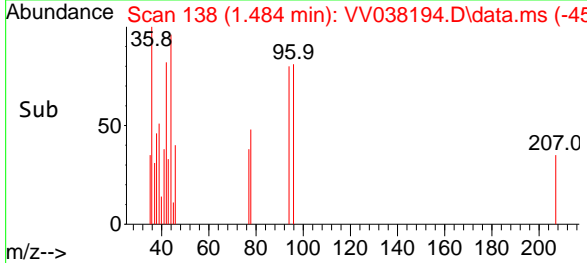
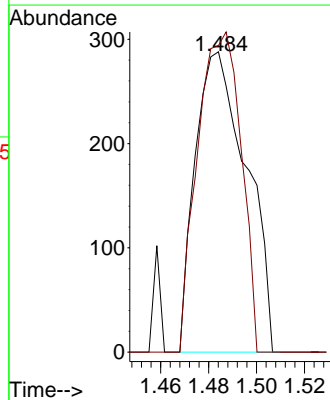
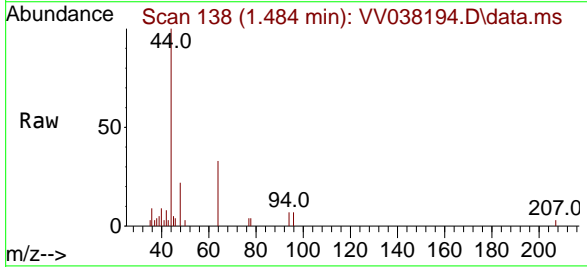


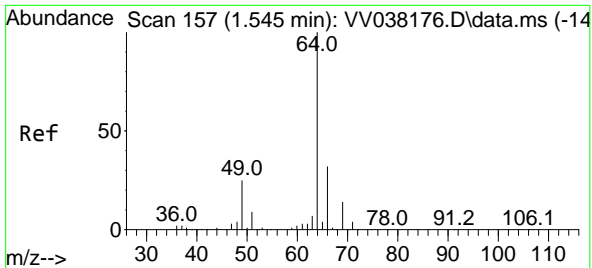
Tgt Ion: 62 Resp: 542  
 Ion Ratio Lower Upper  
 62 100  
 64 362.2 24.4 45.4#



#6  
 Bromomethane  
 Concen: 0.052 ug/L  
 RT: 1.484 min Scan# 138  
 Delta R.T. 0.000 min  
 Lab File: VV038194.D  
 Acq: 19 Nov 2024 22:12

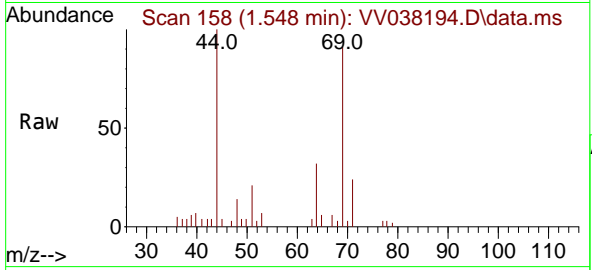
Tgt Ion: 94 Resp: 427  
 Ion Ratio Lower Upper  
 94 100  
 96 102.1 63.7 118.3



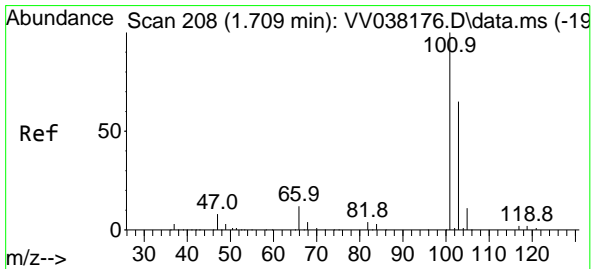
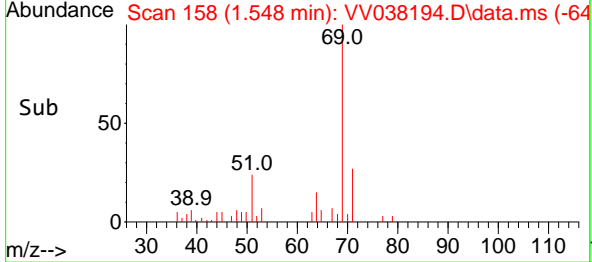
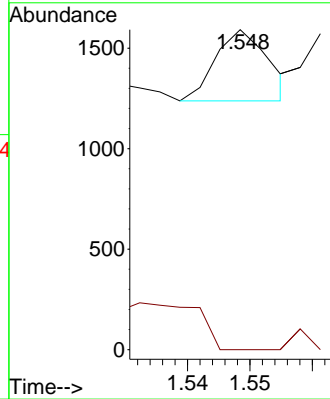


#8  
 Chloroethane  
 Concen: 0.015 ug/L  
 RT: 1.548 min Scan# 11  
 Delta R.T. 0.003 min  
 Lab File: VV038194.D  
 Acq: 19 Nov 2024 22:12

Instrument :  
 MSVOA\_V  
 ClientSampleId :

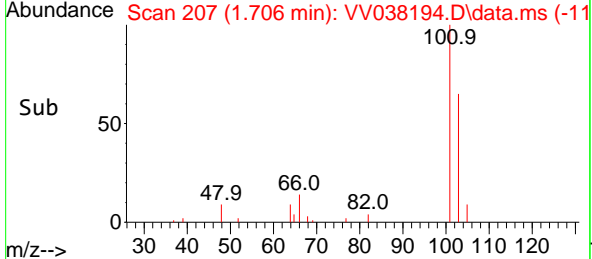
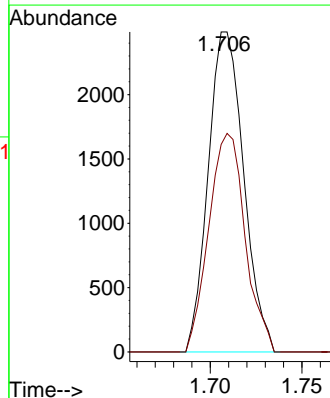
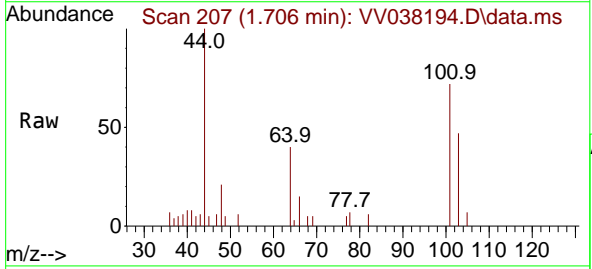


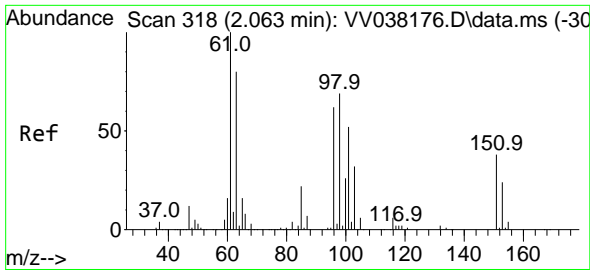
Tgt Ion: 64 Resp: 206  
 Ion Ratio Lower Upper  
 64 100  
 66 0.0 22.0 40.8#



#9  
 Trichlorofluoromethane  
 Concen: 0.111 ug/L  
 RT: 1.706 min Scan# 207  
 Delta R.T. -0.003 min  
 Lab File: VV038194.D  
 Acq: 19 Nov 2024 22:12

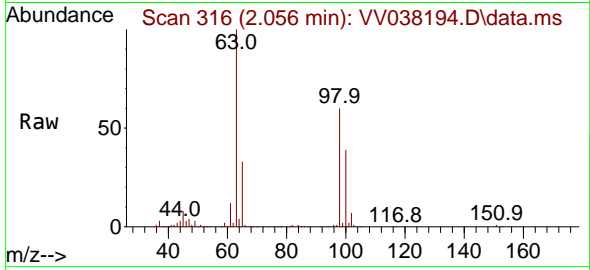
Tgt Ion: 101 Resp: 3351  
 Ion Ratio Lower Upper  
 101 100  
 103 69.9 51.5 77.3



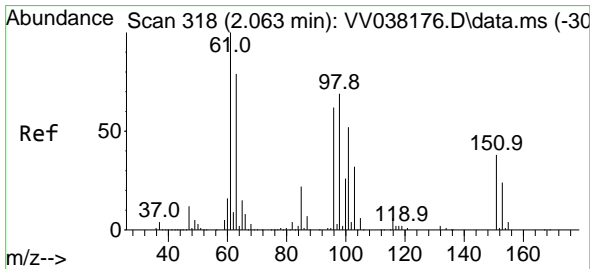
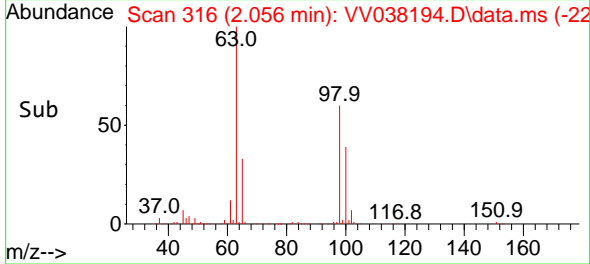
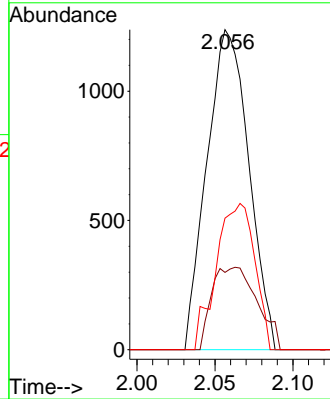


#10  
 1,1,2-Trichloro-1,2,2-trifluoroethane  
 Concen: 0.135 ug/L  
 RT: 2.056 min Scan# 316  
 Delta R.T. -0.006 min  
 Lab File: VV038194.D  
 Acq: 19 Nov 2024 22:12

Instrument :  
 MSVOA\_V  
 ClientSampleId :

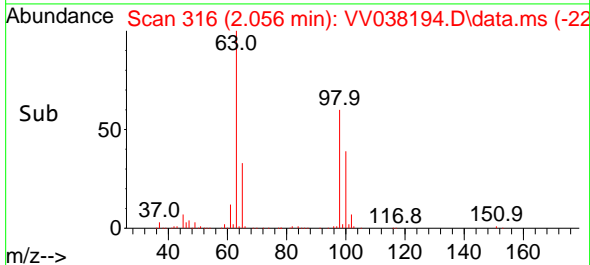
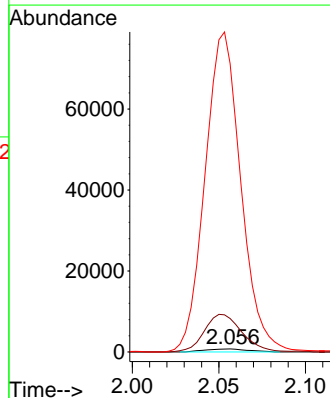
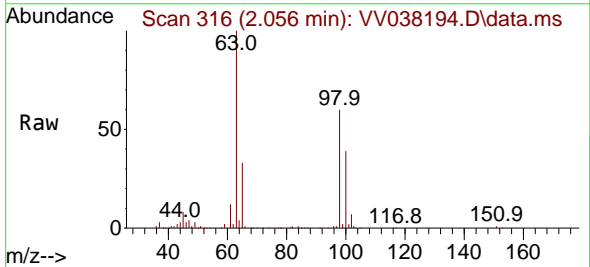


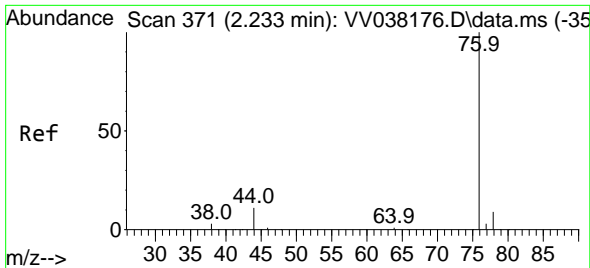
Tgt Ion:101 Resp: 2316  
 Ion Ratio Lower Upper  
 101 100  
 85 27.9 33.4 50.0#  
 151 42.0 58.8 88.2#



#12  
 1,1-Dichloroethene  
 Concen: 0.079 ug/L  
 RT: 2.056 min Scan# 316  
 Delta R.T. -0.006 min  
 Lab File: VV038194.D  
 Acq: 19 Nov 2024 22:12

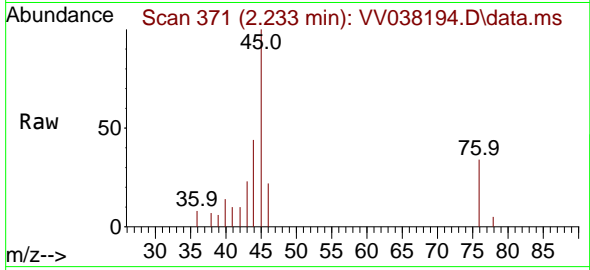
Tgt Ion: 96 Resp: 1288  
 Ion Ratio Lower Upper  
 96 100  
 61 1105.2 115.7 214.9#  
 63 9520.9 101.1 187.7#



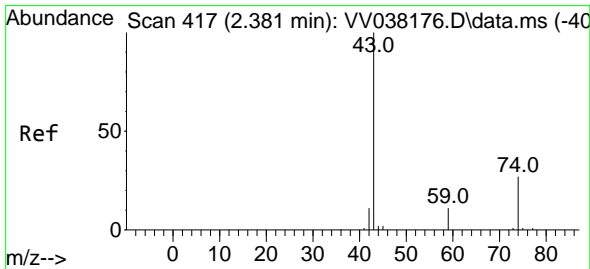
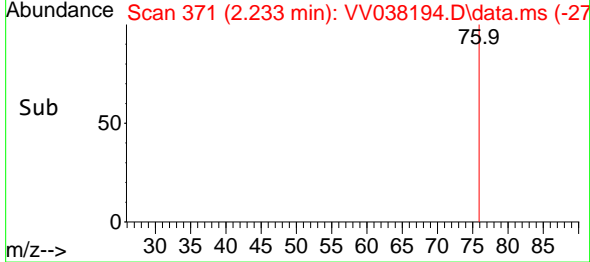
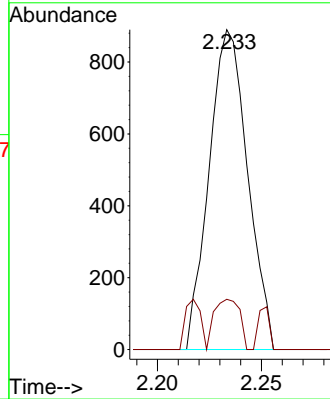


#14  
 Carbon disulfide  
 Concen: 0.022 ug/L  
 RT: 2.233 min Scan# 31  
 Delta R.T. 0.000 min  
 Lab File: VV038194.D  
 Acq: 19 Nov 2024 22:12

Instrument :  
 MSVOA\_V  
 ClientSampleId :

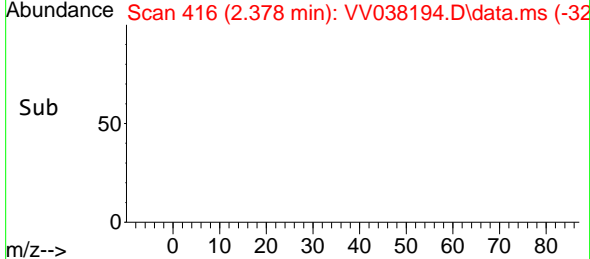
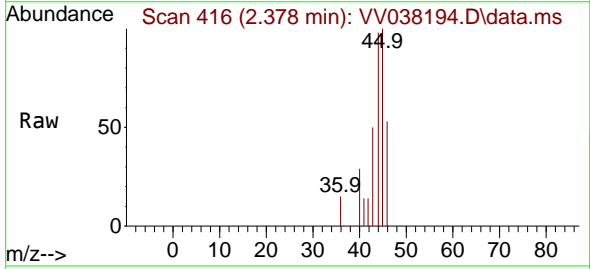


Tgt Ion: 76 Resp: 1148  
 Ion Ratio Lower Upper  
 76 100  
 78 15.7 7.4 11.0#

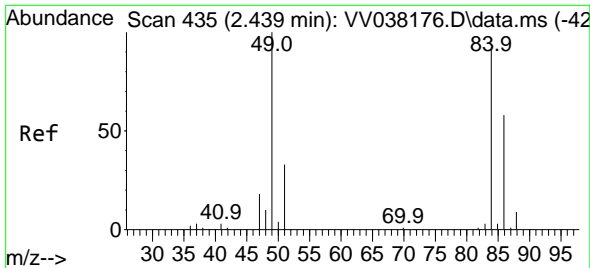


#15  
 Methyl Acetate  
 Concen: 0.032 ug/L  
 RT: 2.378 min Scan# 416  
 Delta R.T. -0.003 min  
 Lab File: VV038194.D  
 Acq: 19 Nov 2024 22:12

Tgt Ion: 43 Resp: 204  
 Ion Ratio Lower Upper  
 43 100  
 74 0.0 22.4 33.6#

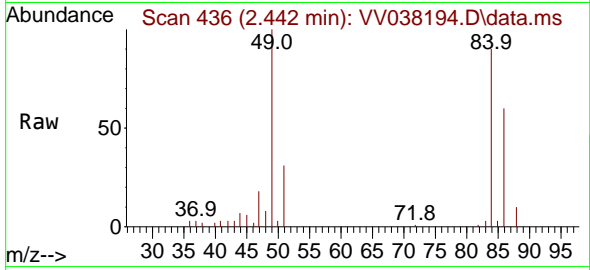






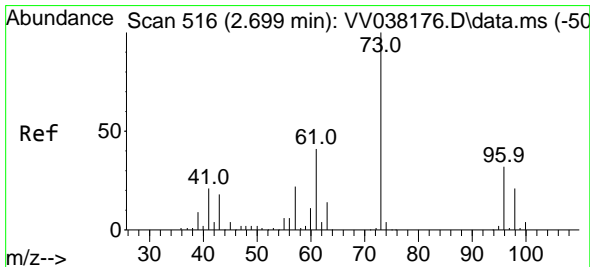
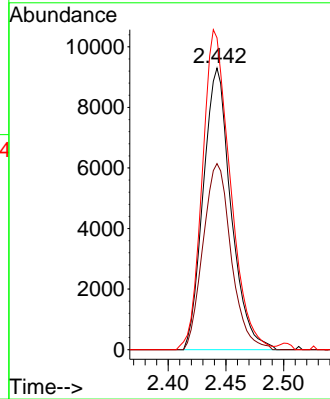
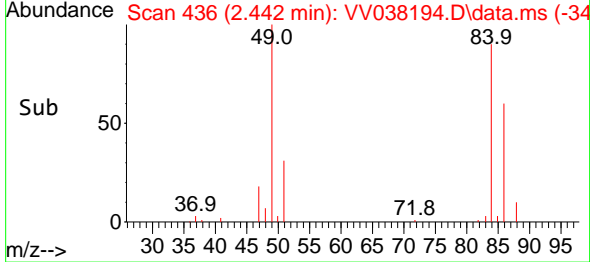
#16  
 Methylene chloride  
 Concen: 0.832 ug/L  
 RT: 2.442 min Scan# 411  
 Delta R.T. 0.003 min  
 Lab File: VV038194.D  
 Acq: 19 Nov 2024 22:12

Instrument : MSVOA\_V  
 ClientSampleId :

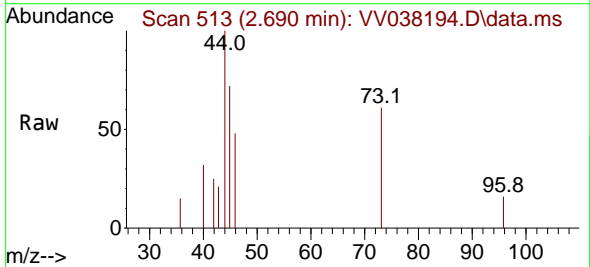


Tgt Ion: 84 Resp: 15523

Ion	Ratio	Lower	Upper
84	100		
86	66.1	44.2	82.2
49	110.7	74.9	139.1

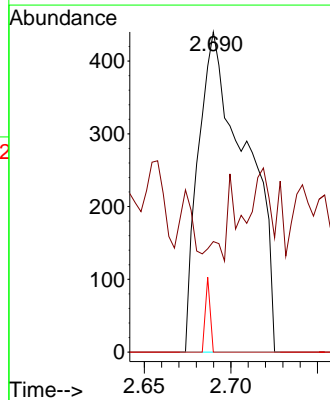
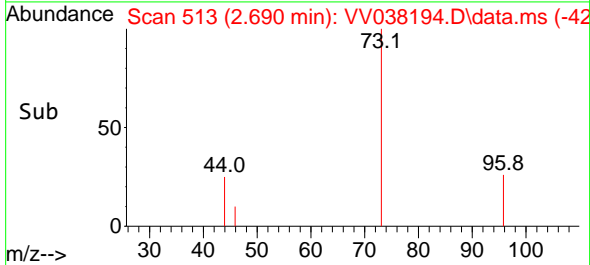


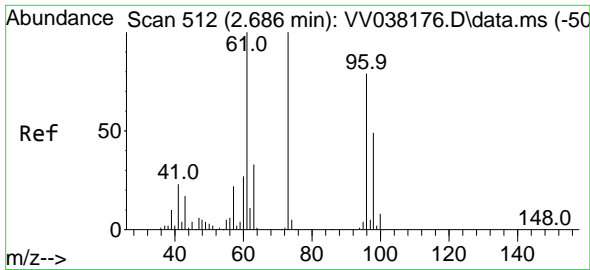
#17  
 Methyl tert-butyl Ether  
 Concen: 0.023 ug/L  
 RT: 2.690 min Scan# 513  
 Delta R.T. -0.010 min  
 Lab File: VV038194.D  
 Acq: 19 Nov 2024 22:12



Tgt Ion: 73 Resp: 850

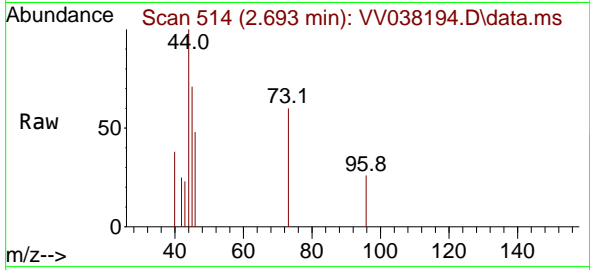
Ion	Ratio	Lower	Upper
73	100		
43	3.6	14.2	21.2#
57	2.4	17.6	26.4#



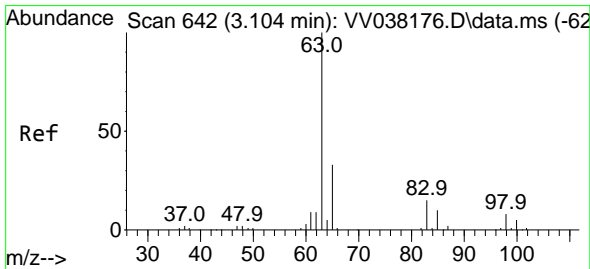
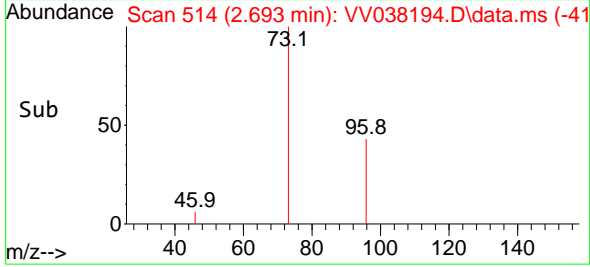
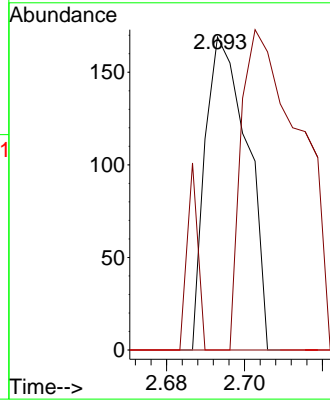


#18  
 trans-1,2-Dichloroethene  
 Concen: 0.007 ug/L  
 RT: 2.693 min Scan# 512  
 Delta R.T. 0.007 min  
 Lab File: VV038194.D  
 Acq: 19 Nov 2024 22:12

Instrument : MSVOA\_V  
 ClientSampleId :

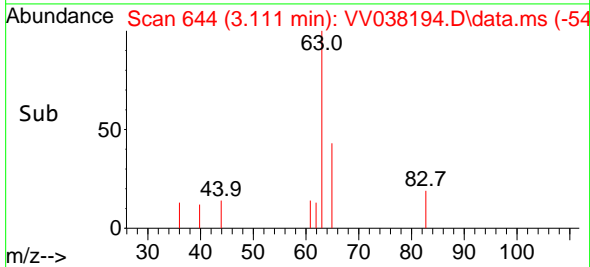
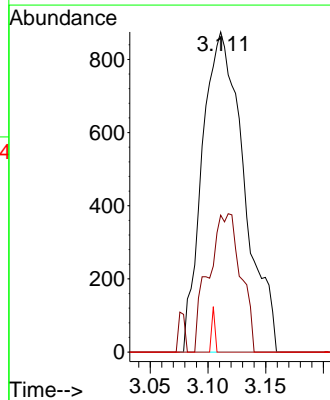
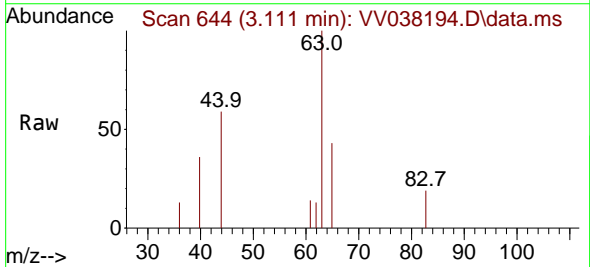


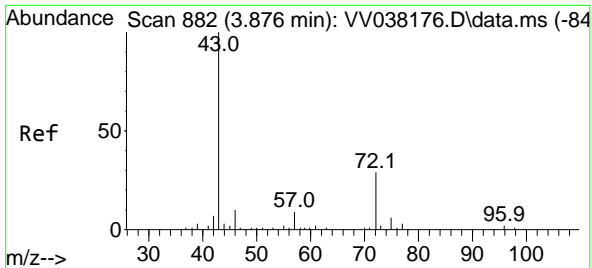
Tgt Ion: 96 Resp: 127  
 Ion Ratio Lower Upper  
 96 100  
 61 0.0 88.5 164.4#  
 98 0.0 43.9 81.5#



#19  
 1,1-Dichloroethane  
 Concen: 0.070 ug/L  
 RT: 3.111 min Scan# 644  
 Delta R.T. 0.007 min  
 Lab File: VV038194.D  
 Acq: 19 Nov 2024 22:12

Tgt Ion: 63 Resp: 2200  
 Ion Ratio Lower Upper  
 63 100  
 65 42.7 22.5 41.7#  
 83 0.0 10.1 18.9#

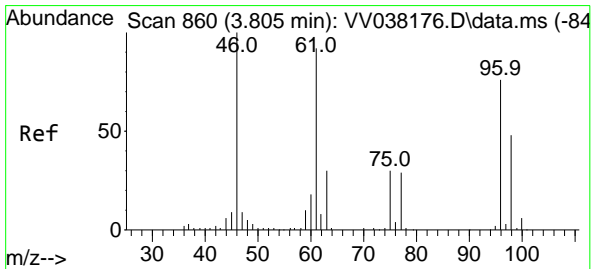
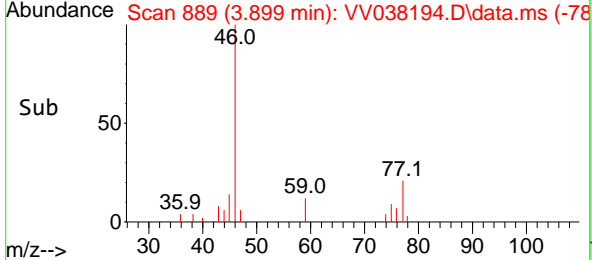
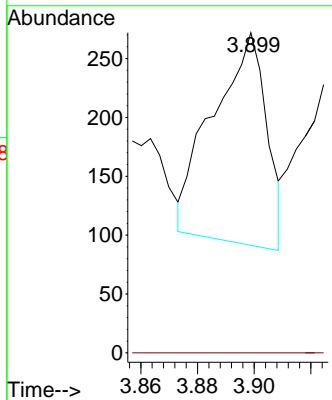
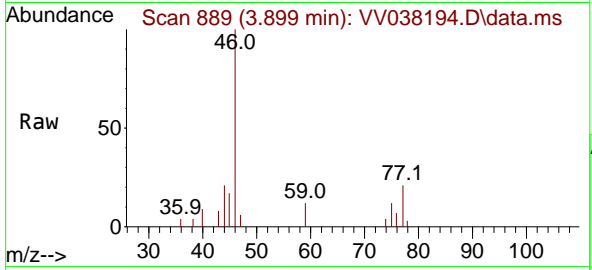




#21  
 2-Butanone  
 Concen: 0.063 ug/L  
 RT: 3.899 min Scan# 889  
 Delta R.T. 0.023 min  
 Lab File: VV038194.D  
 Acq: 19 Nov 2024 22:12

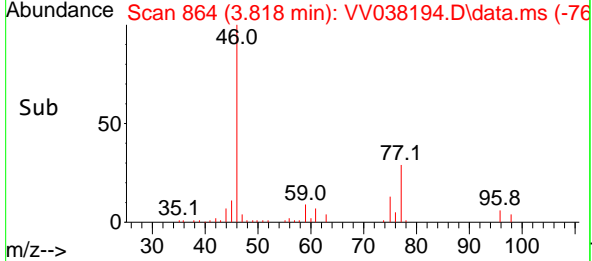
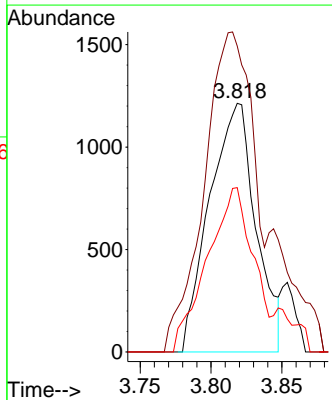
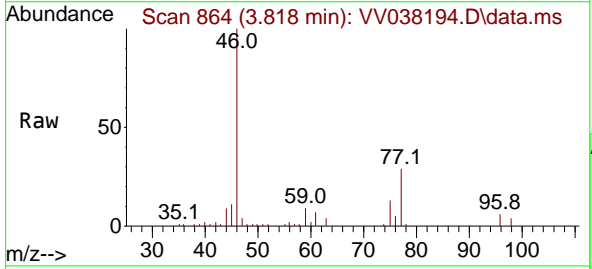
Instrument : MSVOA\_V  
 ClientSampleId :

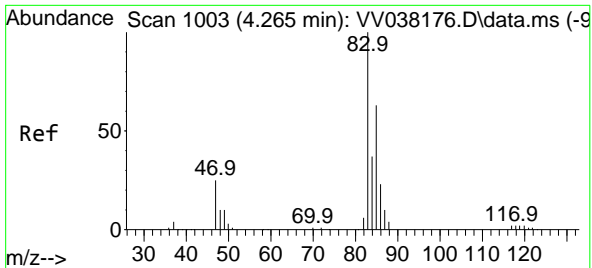
Tgt Ion: 43 Resp: 235  
 Ion Ratio Lower Upper  
 43 100  
 72 0.0 13.0 39.0#



#22  
 cis-1,2-Dichloroethene  
 Concen: 0.155 ug/L  
 RT: 3.818 min Scan# 864  
 Delta R.T. 0.013 min  
 Lab File: VV038194.D  
 Acq: 19 Nov 2024 22:12

Tgt Ion: 96 Resp: 2760  
 Ion Ratio Lower Upper  
 96 100  
 61 123.0 82.7 153.5  
 98 66.1 46.3 85.9

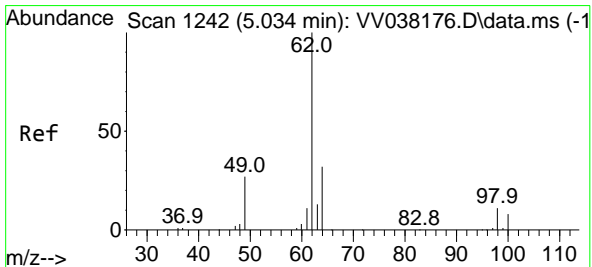
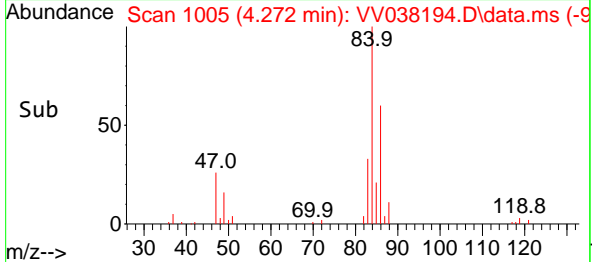
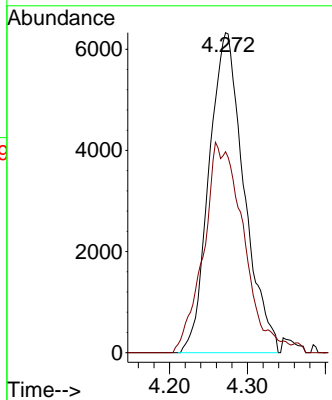
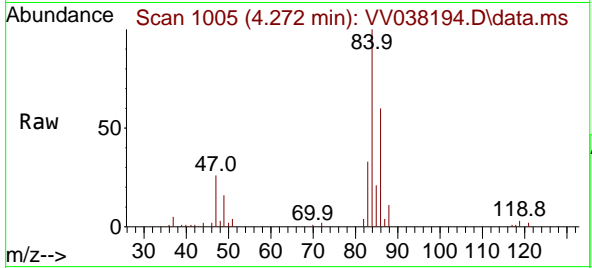




#25  
 Chloroform  
 Concen: 0.587 ug/L  
 RT: 4.272 min Scan# 10  
 Delta R.T. 0.007 min  
 Lab File: VV038194.D  
 Acq: 19 Nov 2024 22:12

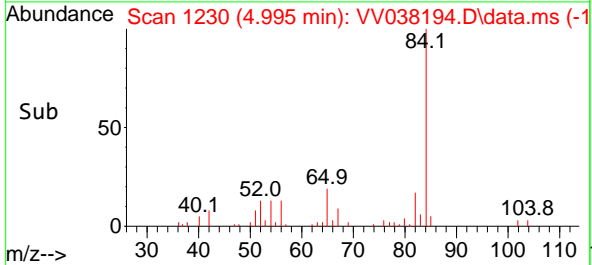
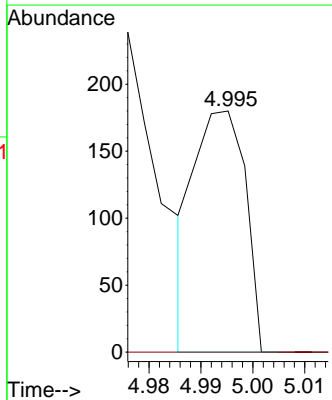
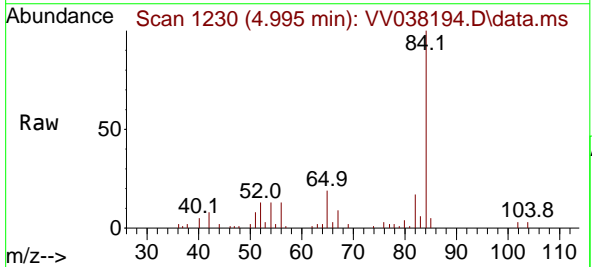
Instrument :  
 MSVOA\_V  
 ClientSampleId :

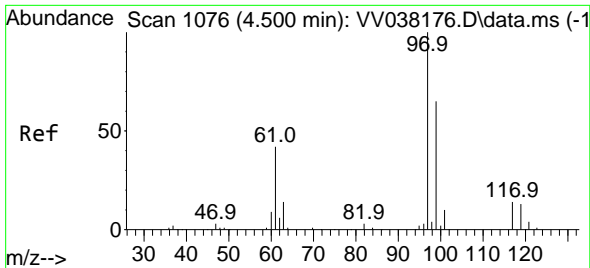
Tgt Ion: 83 Resp: 19661  
 Ion Ratio Lower Upper  
 83 100  
 85 62.8 46.5 86.3



#27  
 1,2-Dichloroethane  
 Concen: 0.007 ug/L  
 RT: 4.995 min Scan# 1230  
 Delta R.T. -0.038 min  
 Lab File: VV038194.D  
 Acq: 19 Nov 2024 22:12

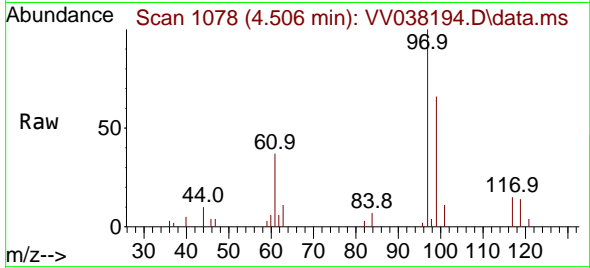
Tgt Ion: 62 Resp: 123  
 Ion Ratio Lower Upper  
 62 100  
 98 0.0 8.2 12.4#



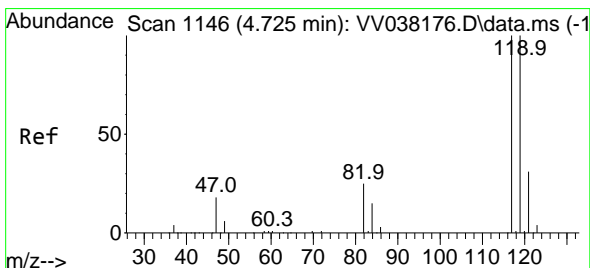
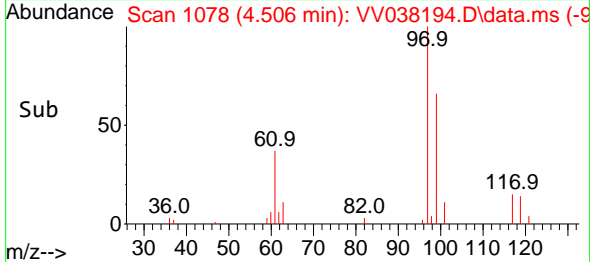
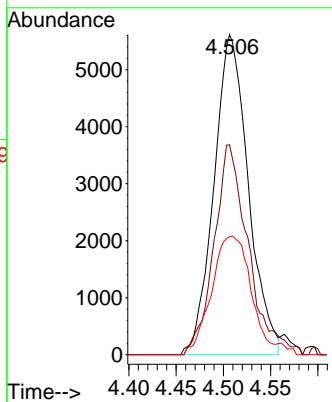


#29  
 1,1,1-Trichloroethane  
 Concen: 0.469 ug/L  
 RT: 4.506 min Scan# 1078  
 Delta R.T. 0.007 min  
 Lab File: VV038194.D  
 Acq: 19 Nov 2024 22:12

Instrument : MSVOA\_V  
 ClientSampleId :

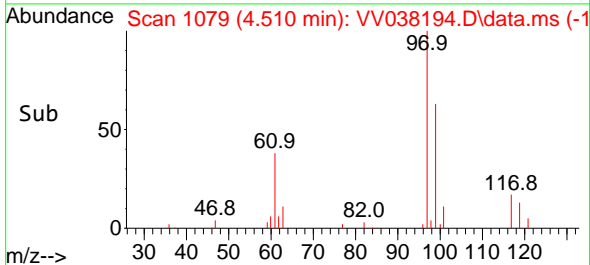
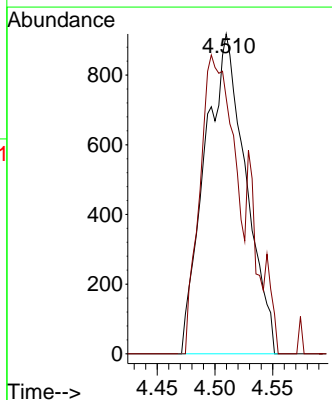
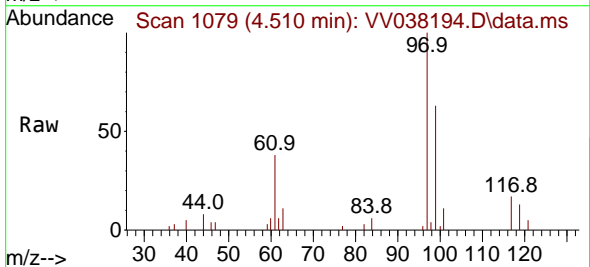


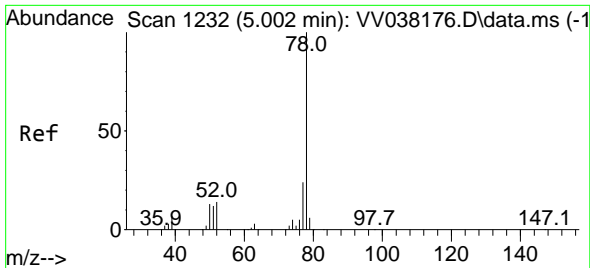
Tgt Ion: 97 Resp: 14210  
 Ion Ratio Lower Upper  
 97 100  
 99 65.4 51.8 77.8  
 61 42.2 32.2 48.2



#31  
 Carbon tetrachloride  
 Concen: 0.085 ug/L  
 RT: 4.510 min Scan# 1079  
 Delta R.T. -0.215 min  
 Lab File: VV038194.D  
 Acq: 19 Nov 2024 22:12

Tgt Ion: 117 Resp: 2262  
 Ion Ratio Lower Upper  
 117 100  
 119 79.3 77.4 116.2

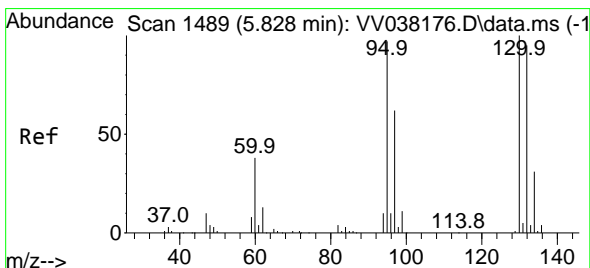
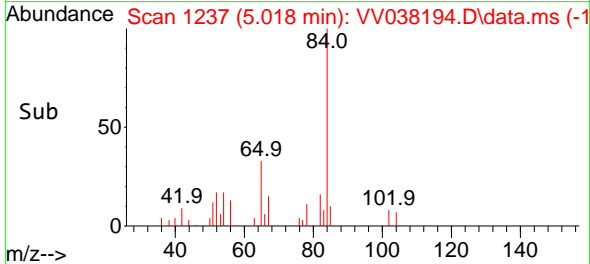
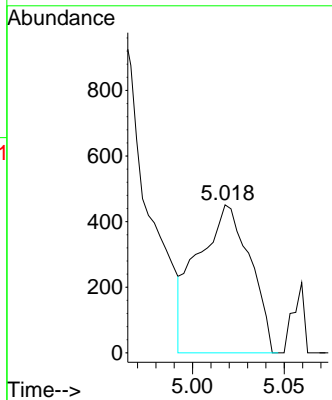
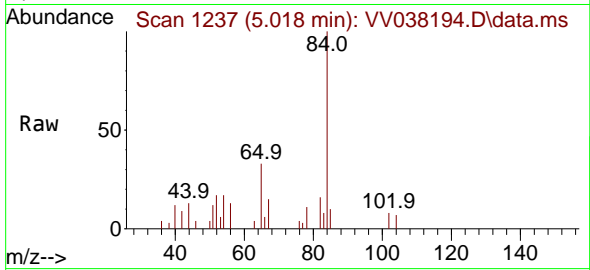




#33  
 Benzene  
 Concen: 0.013 ug/L  
 RT: 5.018 min Scan# 11  
 Delta R.T. 0.016 min  
 Lab File: VV038194.D  
 Acq: 19 Nov 2024 22:12

Instrument : MSVOA\_V  
 ClientSampleId :

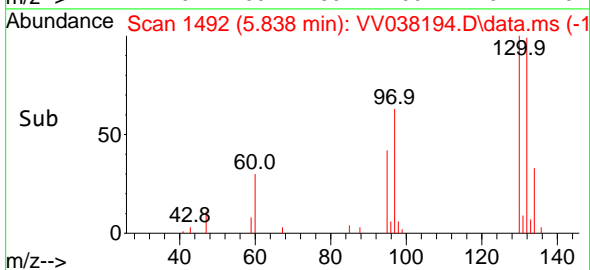
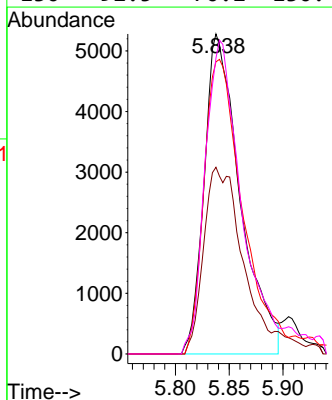
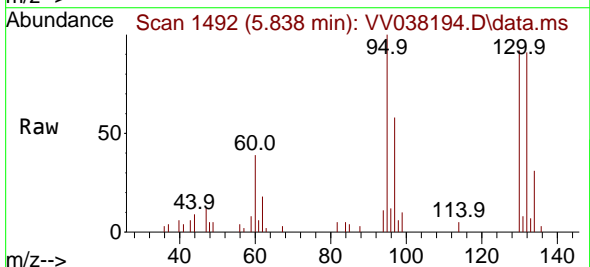
Tgt Ion: 78 Resp: 893

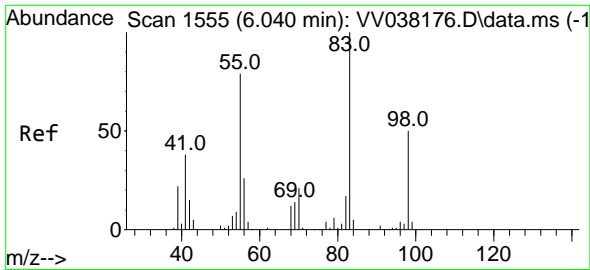


#34  
 Trichloroethene  
 Concen: 0.633 ug/L  
 RT: 5.838 min Scan# 1492  
 Delta R.T. 0.010 min  
 Lab File: VV038194.D  
 Acq: 19 Nov 2024 22:12

Tgt Ion: 95 Resp: 12242

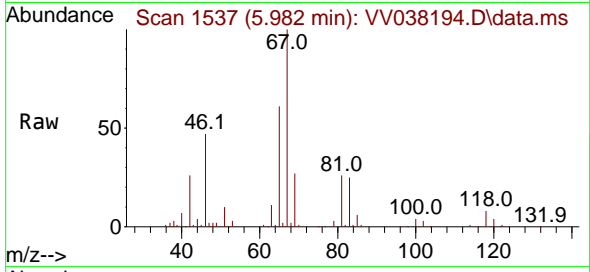
Ion	Ratio	Lower	Upper
95	100		
97	58.3	44.8	83.2
132	91.3	68.3	126.8
130	92.5	70.2	130.4



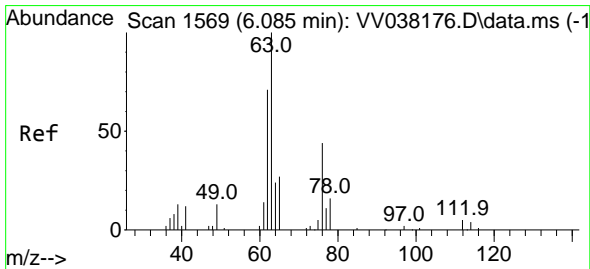
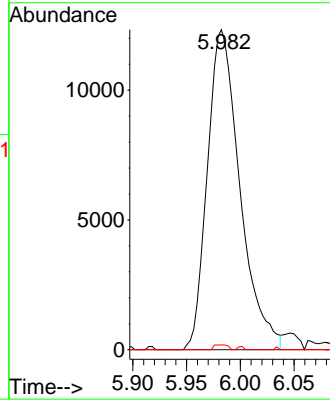
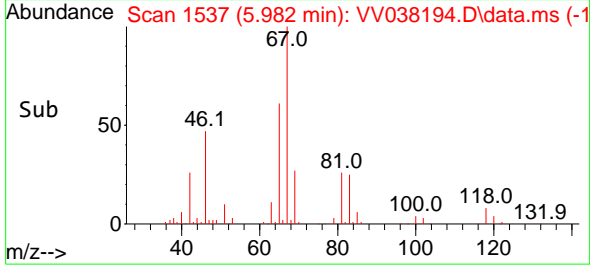


#35  
 Methylcyclohexane  
 Concen: 0.949 ug/L  
 RT: 5.982 min Scan# 1537  
 Delta R.T. -0.058 min  
 Lab File: VV038194.D  
 Acq: 19 Nov 2024 22:12

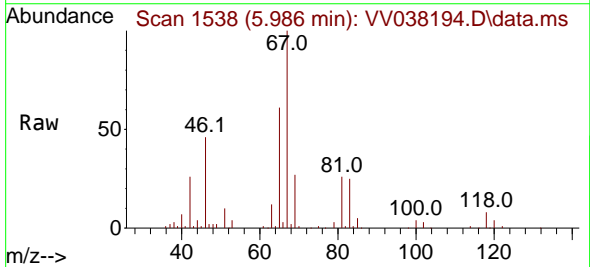
Instrument : MSVOA\_V  
 ClientSampleId :



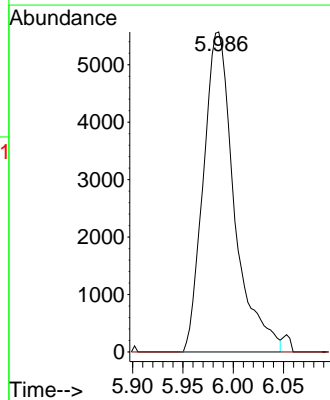
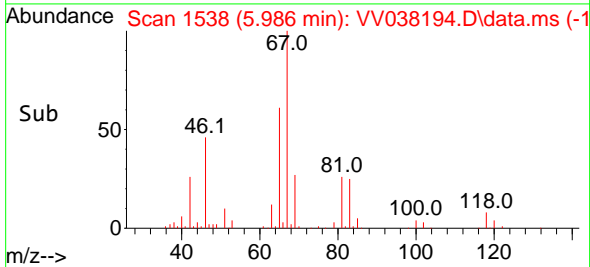
Tgt Ion: 83 Resp: 25972  
 Ion Ratio Lower Upper  
 83 100  
 55 0.0 59.7 89.5#  
 98 0.6 39.0 58.4#

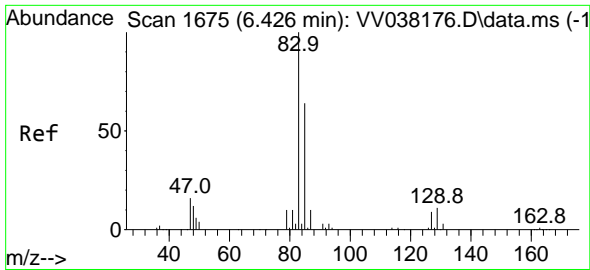


#37  
 1,2-Dichloropropane  
 Concen: 0.670 ug/L  
 RT: 5.986 min Scan# 1538  
 Delta R.T. -0.100 min  
 Lab File: VV038194.D  
 Acq: 19 Nov 2024 22:12



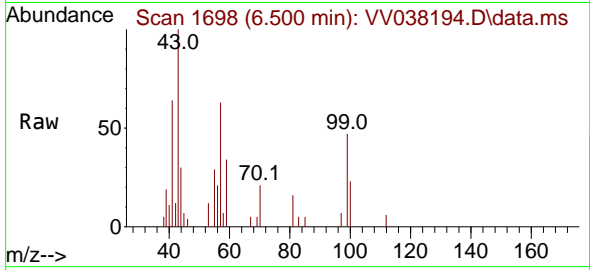
Tgt Ion: 63 Resp: 11907  
 Ion Ratio Lower Upper  
 63 100  
 112 0.0 3.9 5.9#



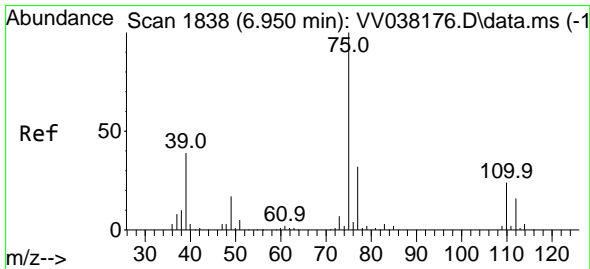
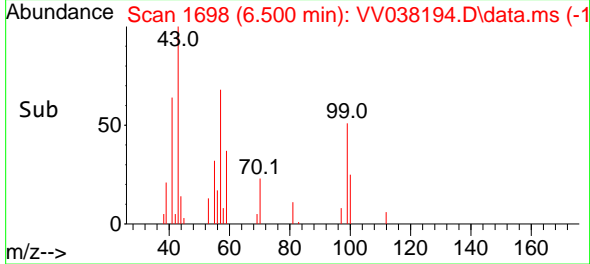
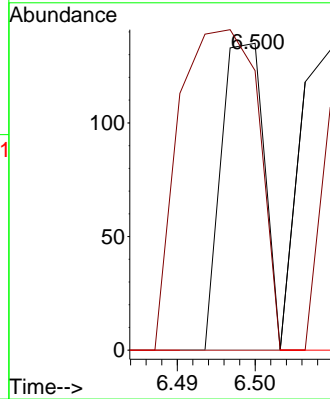


#38  
 Bromodichloromethane  
 Concen: 0.002 ug/L  
 RT: 6.500 min Scan# 1  
 Delta R.T. 0.074 min  
 Lab File: VV038194.D  
 Acq: 19 Nov 2024 22:12

Instrument :  
 MSVOA\_V  
 ClientSampleId :

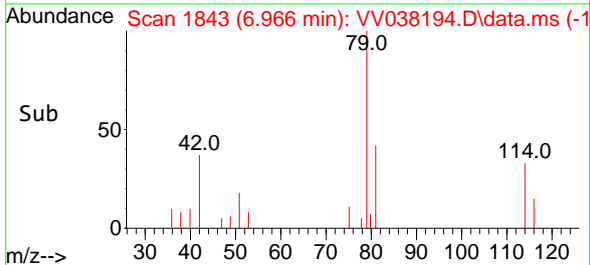
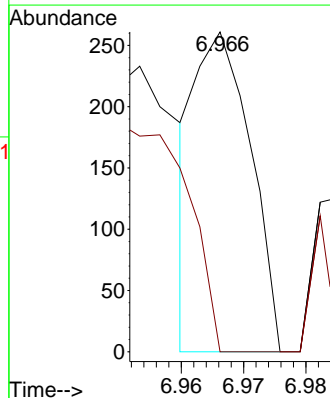
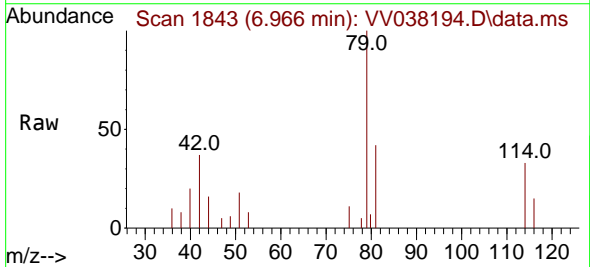


Tgt Ion: 83 Resp: 52  
 Ion Ratio Lower Upper  
 83 100  
 85 91.1 43.9 81.5#  
 127 0.0 6.7 10.1#

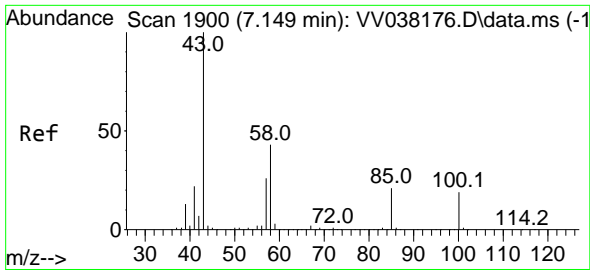


#39  
 cis-1,3-Dichloropropene  
 Concen: 0.006 ug/L  
 RT: 6.966 min Scan# 1843  
 Delta R.T. 0.016 min  
 Lab File: VV038194.D  
 Acq: 19 Nov 2024 22:12

Tgt Ion: 75 Resp: 161  
 Ion Ratio Lower Upper  
 75 100  
 77 0.0 23.4 43.6#

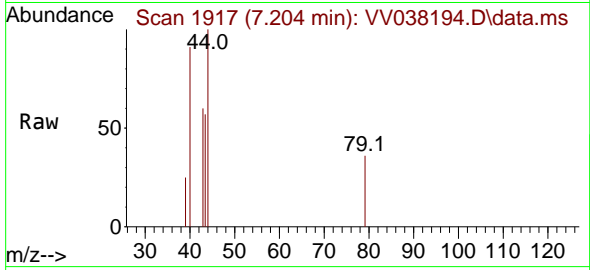




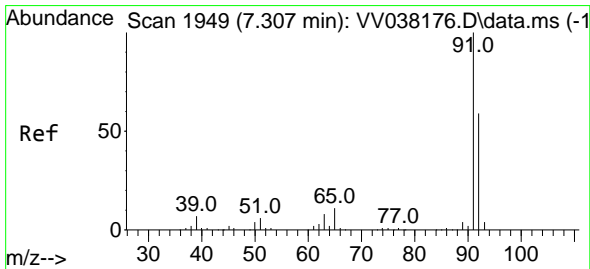
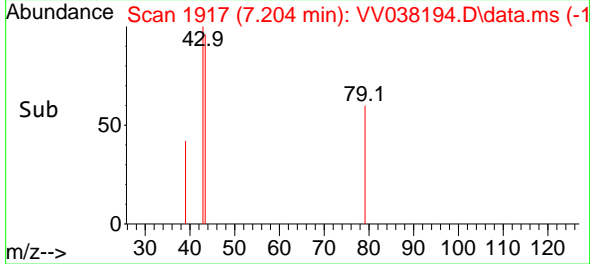
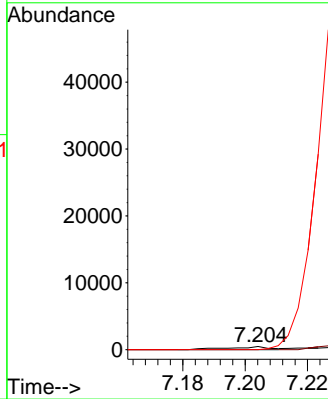


#40  
 4-Methyl-2-pentanone  
 Concen: 0.045 ug/L  
 RT: 7.204 min Scan# 1917  
 Delta R.T. 0.055 min  
 Lab File: VV038194.D  
 Acq: 19 Nov 2024 22:12

Instrument : MSVOA\_V  
 ClientSampleId :

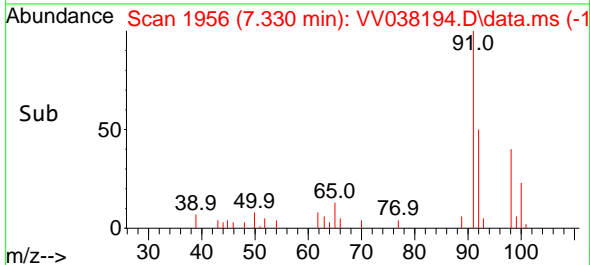
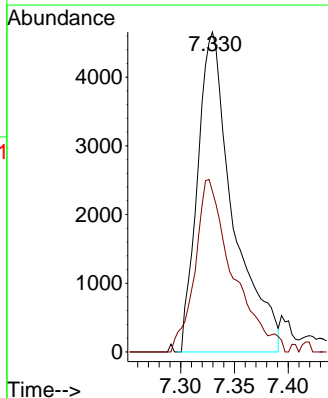
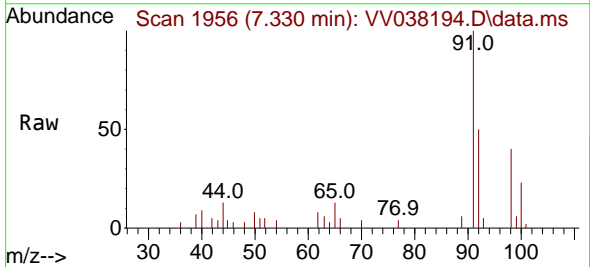


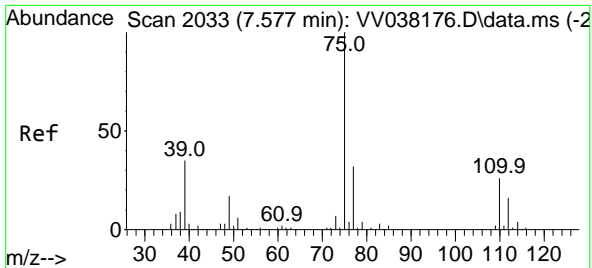
Tgt Ion	Resp	Lower	Upper
43	100		
58	27.5	33.4	50.2#
100	0.0	14.3	21.5#



#42  
 Toluene  
 Concen: 0.142 ug/L  
 RT: 7.330 min Scan# 1956  
 Delta R.T. 0.023 min  
 Lab File: VV038194.D  
 Acq: 19 Nov 2024 22:12

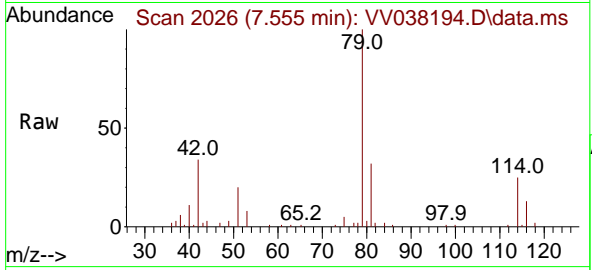
Tgt Ion	Resp	Lower	Upper
91	100		
92	50.2	40.8	75.8



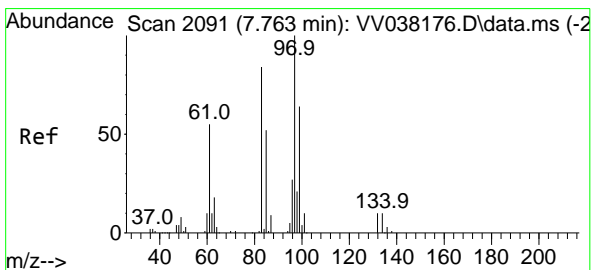
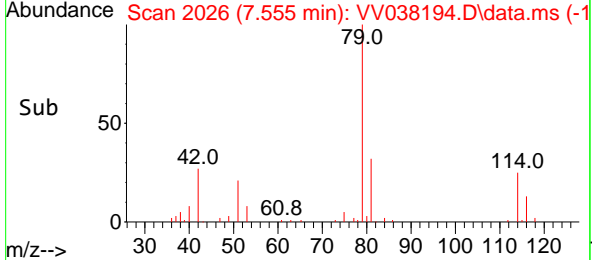
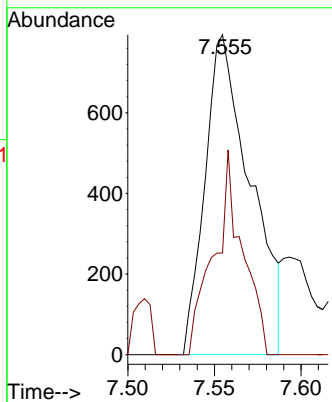


#44  
 trans-1,3-Dichloropropene  
 Concen: 0.069 ug/L  
 RT: 7.555 min Scan# 2033  
 Delta R.T. -0.022 min  
 Lab File: VV038194.D  
 Acq: 19 Nov 2024 22:12

Instrument : MSVOA\_V  
 ClientSampleId :

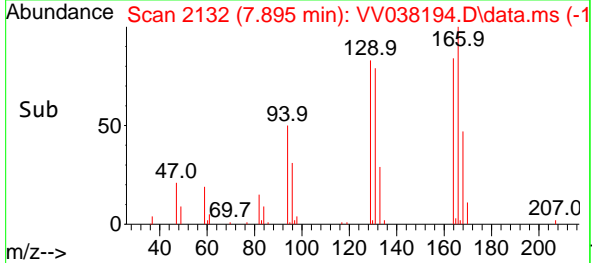
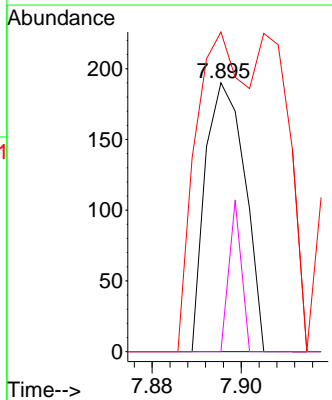
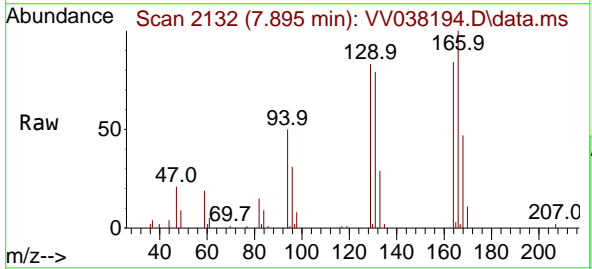


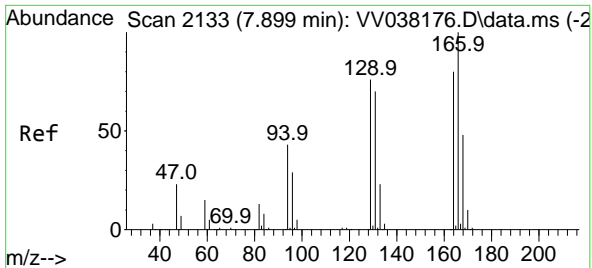
Tgt Ion: 75 Resp: 1449  
 Ion Ratio Lower Upper  
 75 100  
 77 31.7 23.4 43.4



#45  
 1,1,2-Trichloroethane  
 Concen: 0.008 ug/L  
 RT: 7.895 min Scan# 2132  
 Delta R.T. 0.132 min  
 Lab File: VV038194.D  
 Acq: 19 Nov 2024 22:12

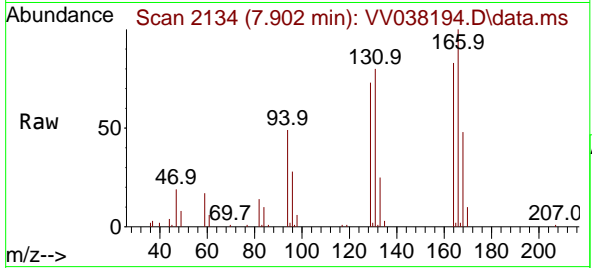
Tgt Ion: 97 Resp: 117  
 Ion Ratio Lower Upper  
 97 100  
 99 0.0 41.9 77.7#  
 83 118.9 57.7 107.1#  
 85 86.8 36.2 67.2#





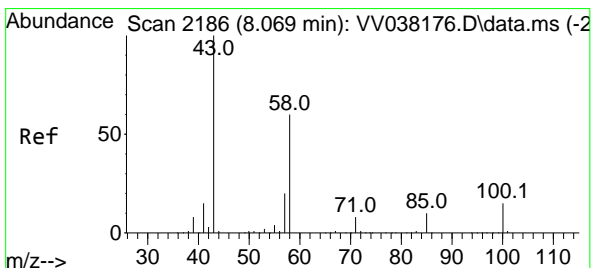
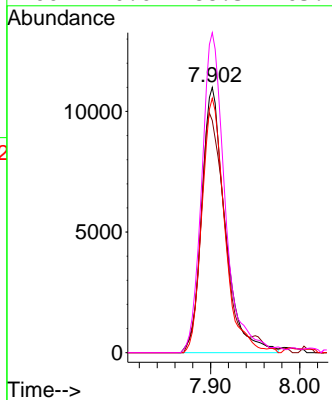
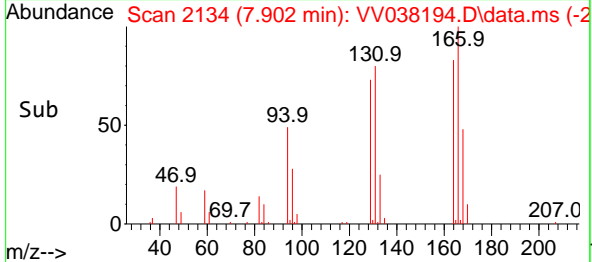
#47  
 Tetrachloroethene  
 Concen: 1.287 ug/L  
 RT: 7.902 min Scan# 2133  
 Delta R.T. 0.003 min  
 Lab File: VV038194.D  
 Acq: 19 Nov 2024 22:12

Instrument :  
 MSVOA\_V  
 ClientSampleId :

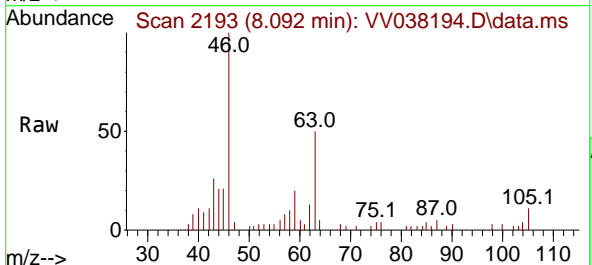


Tgt Ion:164 Resp: 20020

Ion	Ratio	Lower	Upper
164	100		
129	87.5	68.5	127.1
131	95.9	64.8	120.4
166	120.6	88.3	163.9

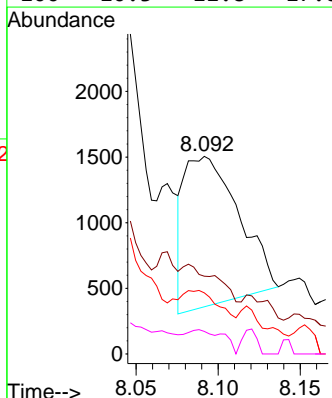
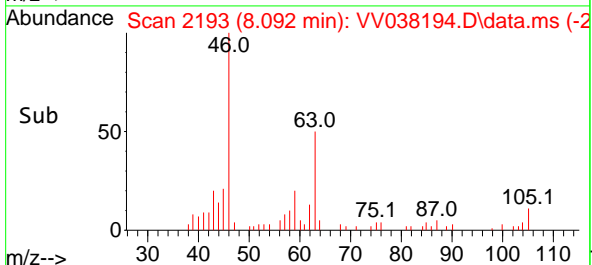


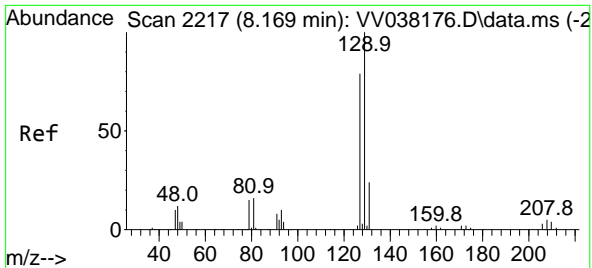
#48  
 2-Hexanone  
 Concen: 0.390 ug/L  
 RT: 8.092 min Scan# 2193  
 Delta R.T. 0.023 min  
 Lab File: VV038194.D  
 Acq: 19 Nov 2024 22:12



Tgt Ion: 43 Resp: 2631

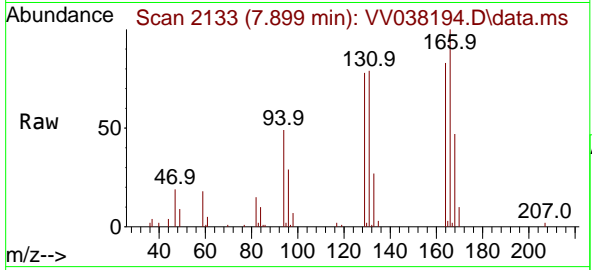
Ion	Ratio	Lower	Upper
43	100		
58	0.0	49.2	73.8#
57	32.7	16.9	25.3#
100	10.3	11.8	17.8#



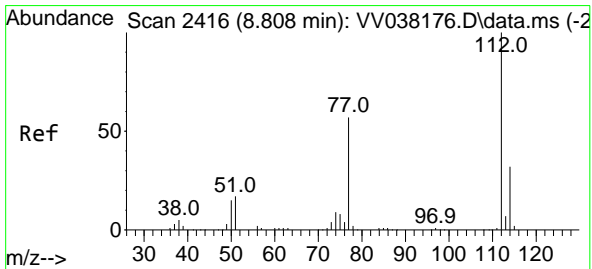
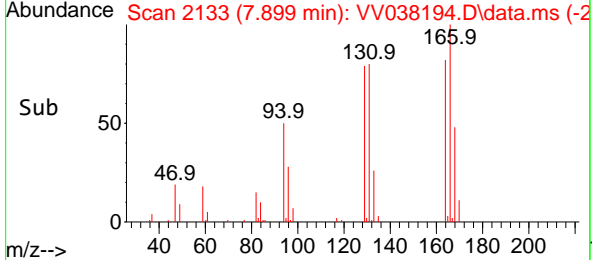
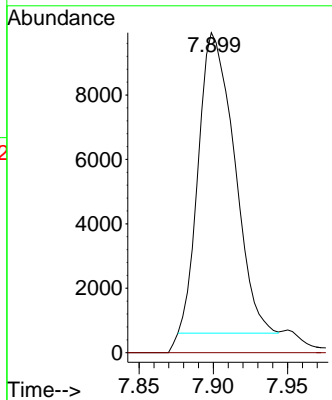


#49  
 Dibromochloromethane  
 Concen: 0.994 ug/L  
 RT: 7.899 min Scan# 2133  
 Delta R.T. -0.270 min  
 Lab File: VV038194.D  
 Acq: 19 Nov 2024 22:12

Instrument : MSVOA\_V  
 ClientSampleId :

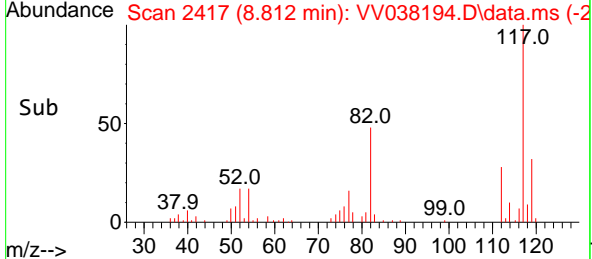
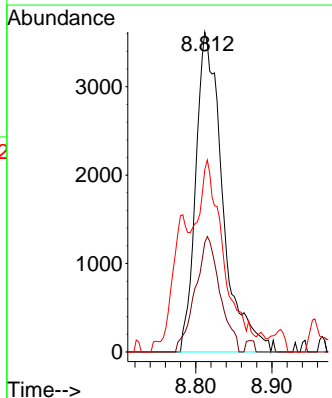
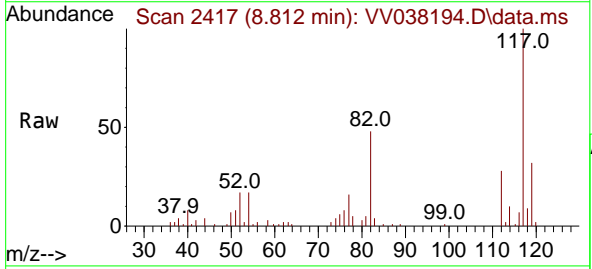


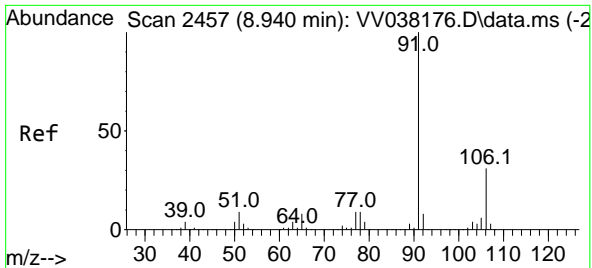
Tgt Ion:129 Resp: 15622  
 Ion Ratio Lower Upper  
 129 100  
 127 0.0 53.5 99.3#



#51  
 Chlorobenzene  
 Concen: 0.171 ug/L  
 RT: 8.812 min Scan# 2417  
 Delta R.T. 0.003 min  
 Lab File: VV038194.D  
 Acq: 19 Nov 2024 22:12

Tgt Ion:112 Resp: 8884  
 Ion Ratio Lower Upper  
 112 100  
 114 34.2 22.0 40.8  
 77 56.9 45.0 67.4

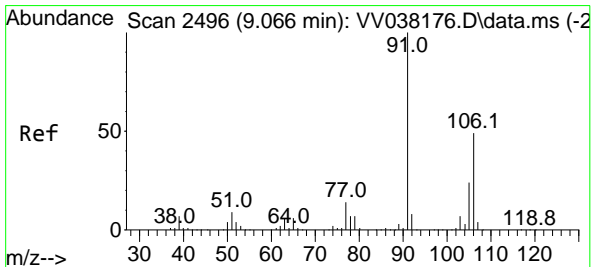
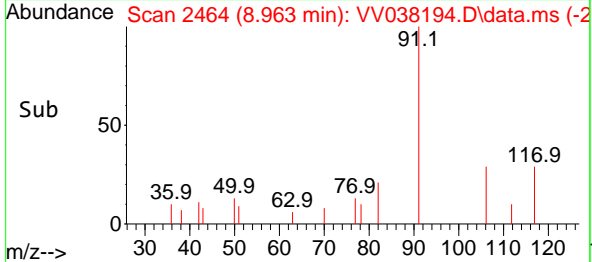
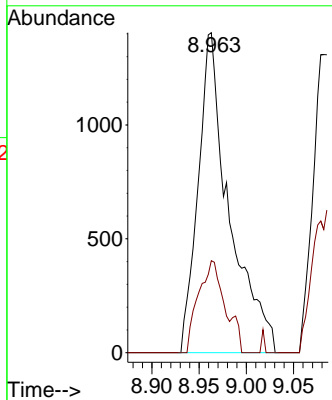
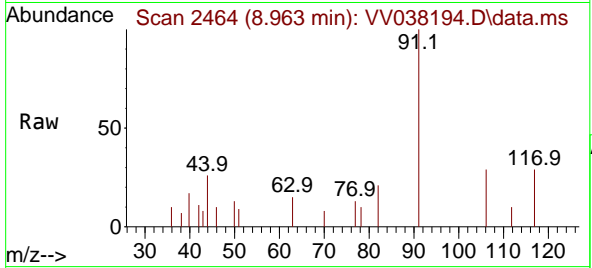




#52  
 Ethylbenzene  
 Concen: 0.040 ug/L  
 RT: 8.963 min Scan# 2457  
 Delta R.T. 0.023 min  
 Lab File: VV038194.D  
 Acq: 19 Nov 2024 22:12

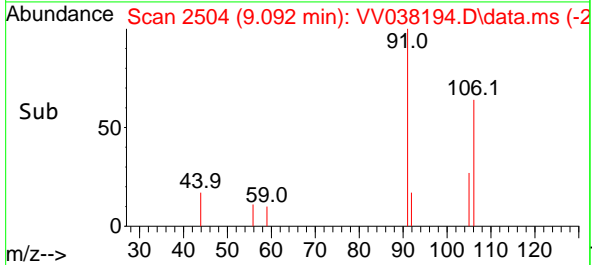
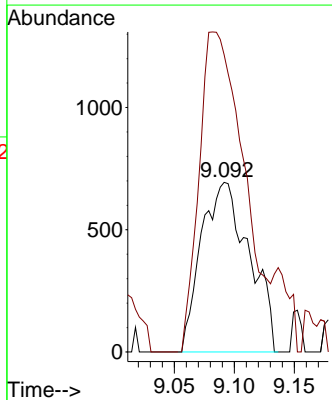
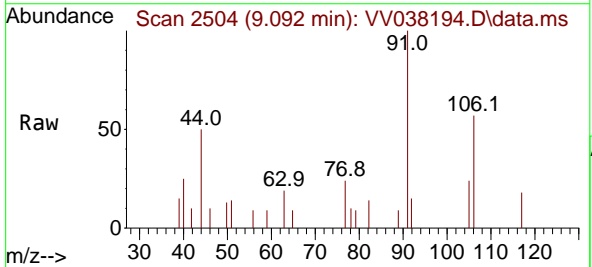
Instrument :  
 MSVOA\_V  
 ClientSampleId :

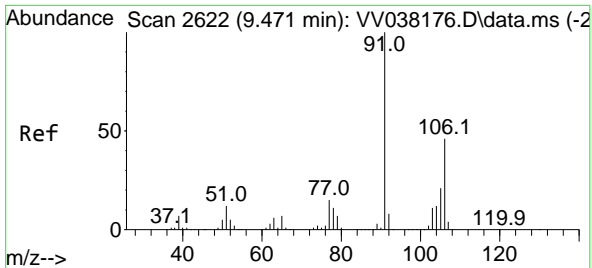
Tgt Ion: 91 Resp: 3208  
 Ion Ratio Lower Upper  
 91 100  
 106 28.8 21.8 40.4



#53  
 m,p-Xylene  
 Concen: 0.064 ug/L  
 RT: 9.092 min Scan# 2504  
 Delta R.T. 0.026 min  
 Lab File: VV038194.D  
 Acq: 19 Nov 2024 22:12

Tgt Ion: 106 Resp: 1929  
 Ion Ratio Lower Upper  
 106 100  
 91 175.2 138.7 257.5

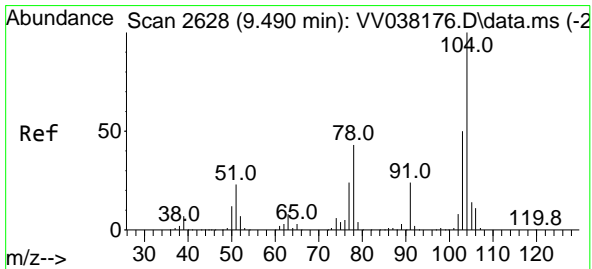
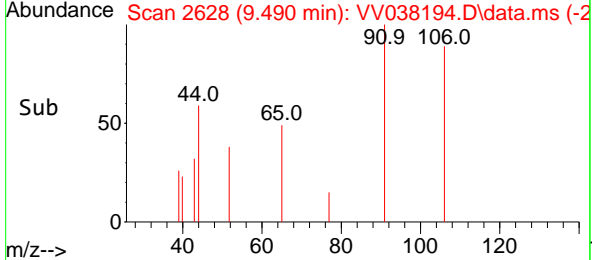
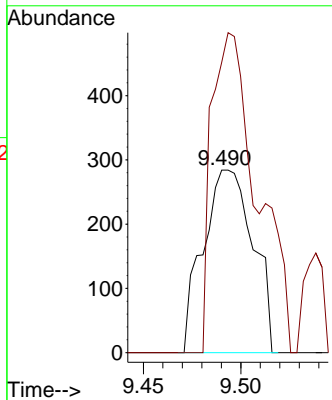
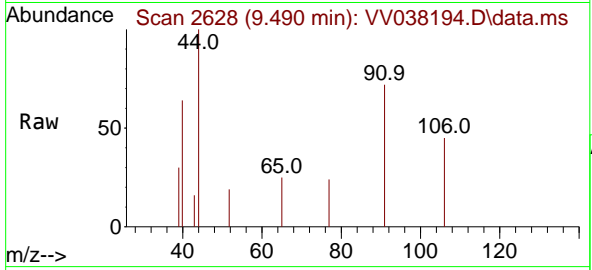




#54  
 o-Xylene  
 Concen: 0.017 ug/L  
 RT: 9.490 min Scan# 2628  
 Delta R.T. 0.019 min  
 Lab File: VV038194.D  
 Acq: 19 Nov 2024 22:12

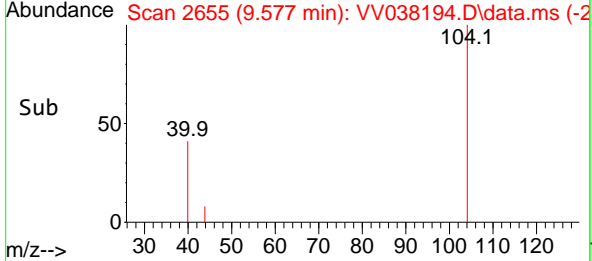
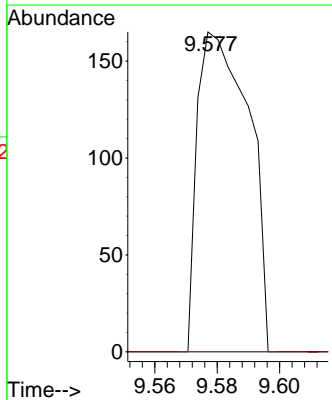
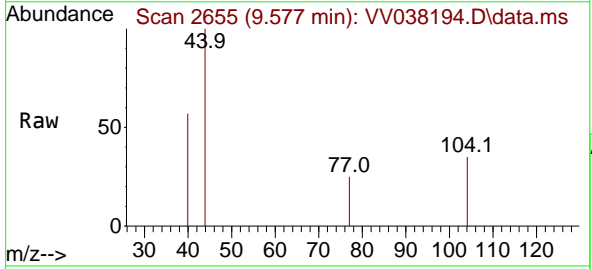
Instrument : MSVOA\_V  
 ClientSampleId :

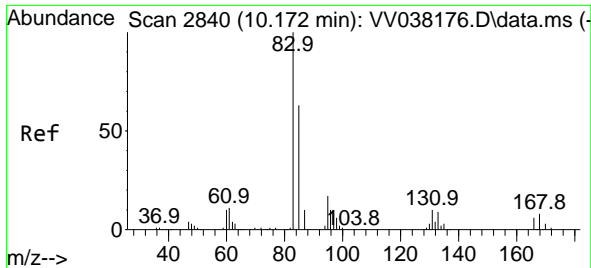
Tgt Ion:106 Resp: 508  
 Ion Ratio Lower Upper  
 106 100  
 91 159.2 155.5 288.7



#55  
 Styrene  
 Concen: 0.004 ug/L  
 RT: 9.577 min Scan# 2655  
 Delta R.T. 0.087 min  
 Lab File: VV038194.D  
 Acq: 19 Nov 2024 22:12

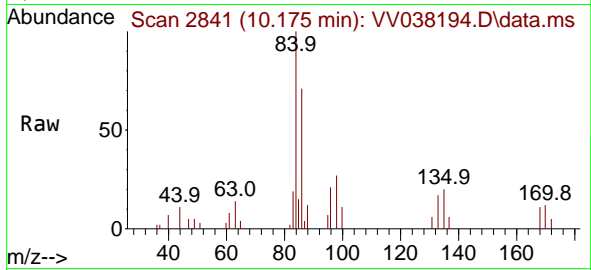
Tgt Ion:104 Resp: 188  
 Ion Ratio Lower Upper  
 104 100  
 78 0.0 29.7 55.1#



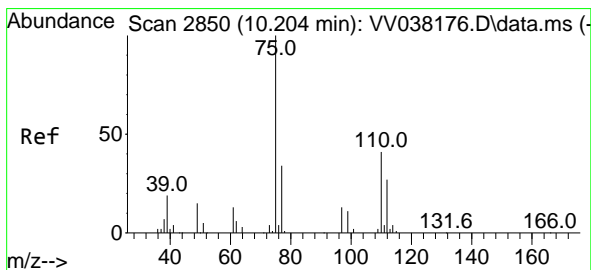
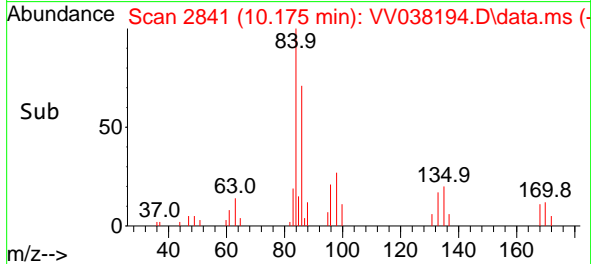
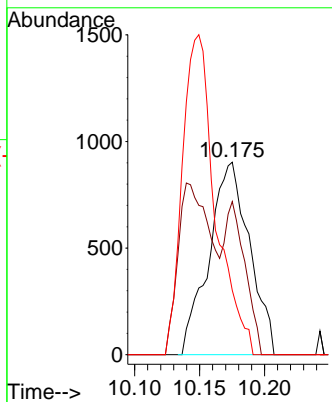


#57  
 1,1,2,2-Tetrachloroethane  
 Concen: 0.116 ug/L  
 RT: 10.175 min Scan# 21  
 Delta R.T. 0.003 min  
 Lab File: VV038194.D  
 Acq: 19 Nov 2024 22:12

Instrument : MSVOA\_V  
 ClientSampleId :

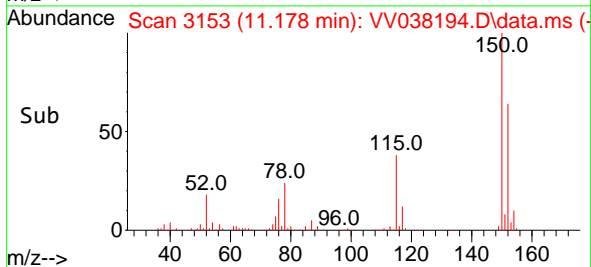
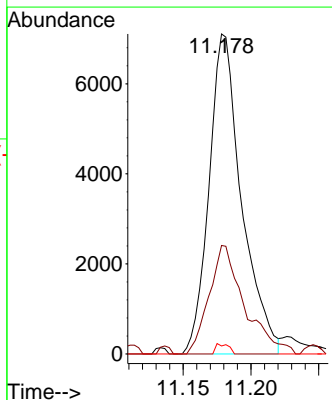
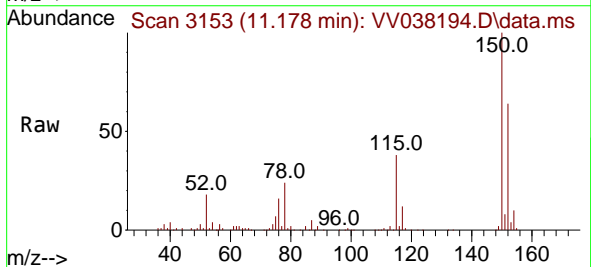


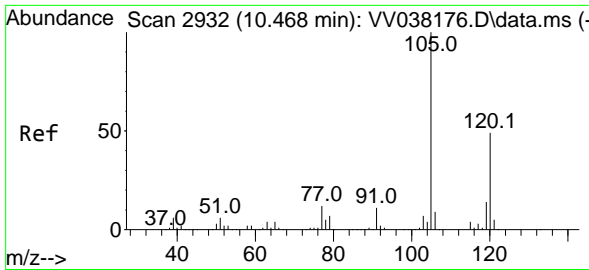
Tgt Ion: 83 Resp: 1955  
 Ion Ratio Lower Upper  
 83 100  
 85 79.5 45.7 84.9  
 131 33.4 8.2 12.4#



#61  
 1,2,3-Trichloropropane  
 Concen: 1.274 ug/L  
 RT: 11.178 min Scan# 3153  
 Delta R.T. 0.974 min  
 Lab File: VV038194.D  
 Acq: 19 Nov 2024 22:12

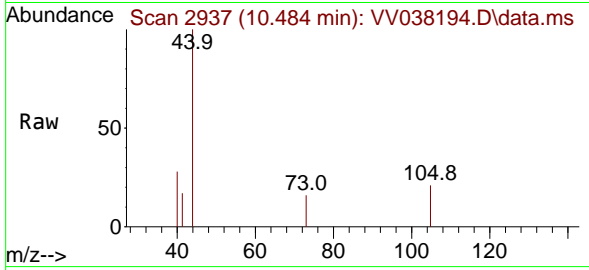
Tgt Ion: 75 Resp: 11866  
 Ion Ratio Lower Upper  
 75 100  
 77 36.9 26.4 39.6  
 110 1.2 32.3 48.5#



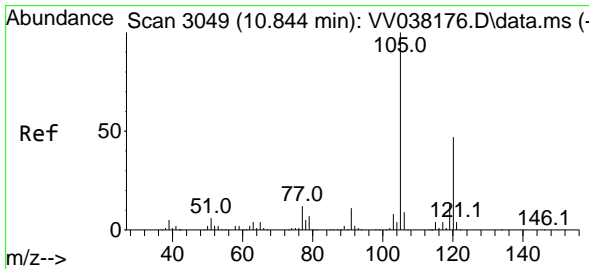
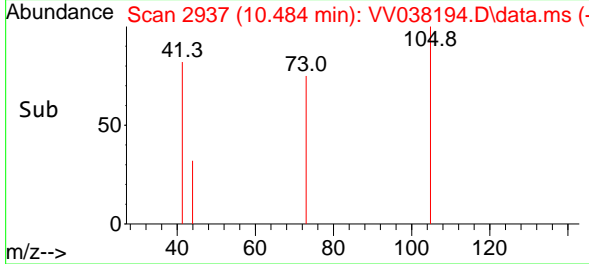
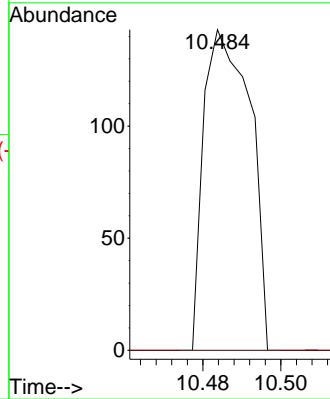


#62  
 1,3,5-Trimethylbenzene  
 Concen: 0.002 ug/L  
 RT: 10.484 min Scan# 2937  
 Delta R.T. 0.016 min  
 Lab File: VV038194.D  
 Acq: 19 Nov 2024 22:12

Instrument :  
 MSVOA\_V  
 ClientSampleId :

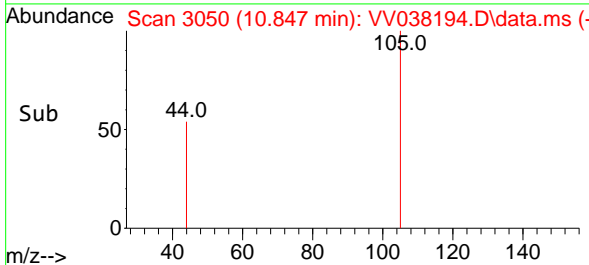
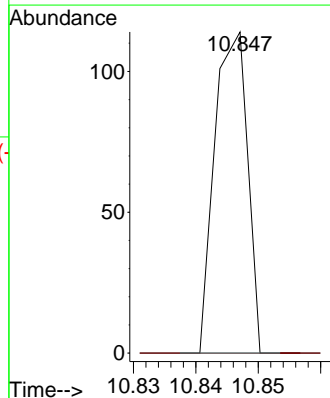
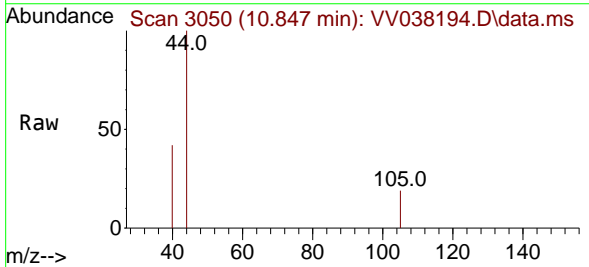


Tgt Ion:105 Resp: 118  
 Ion Ratio Lower Upper  
 105 100  
 120 0.0 39.2 58.8#

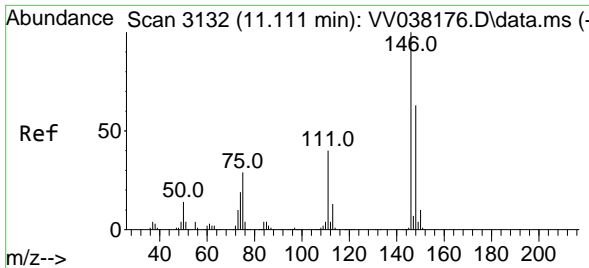


#63  
 1,2,4-Trimethylbenzene  
 Concen: 0.001 ug/L  
 RT: 10.847 min Scan# 3050  
 Delta R.T. 0.003 min  
 Lab File: VV038194.D  
 Acq: 19 Nov 2024 22:12

Tgt Ion:105 Resp: 41  
 Ion Ratio Lower Upper  
 105 100  
 120 0.0 37.0 55.4#

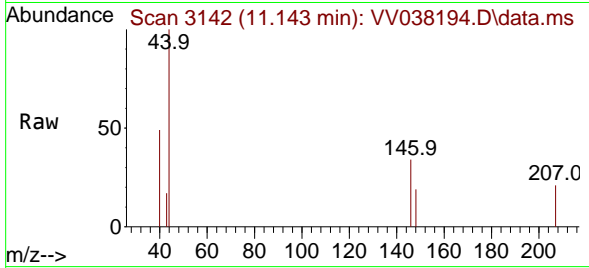




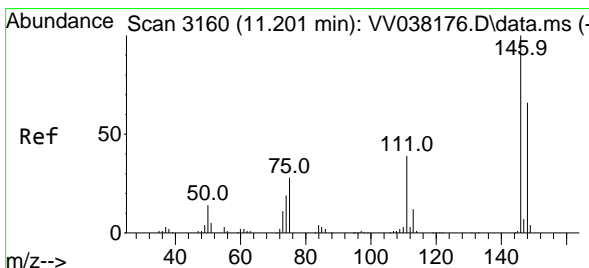
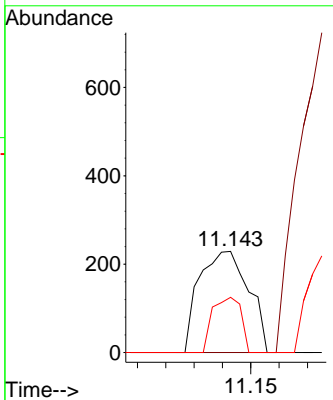
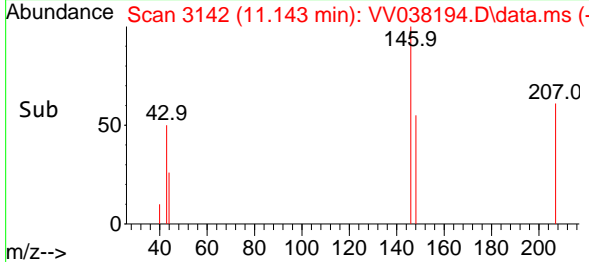


#64  
 1,3-Dichlorobenzene  
 Concen: 0.008 ug/L  
 RT: 11.143 min Scan# 3142  
 Delta R.T. 0.032 min  
 Lab File: VV038194.D  
 Acq: 19 Nov 2024 22:12

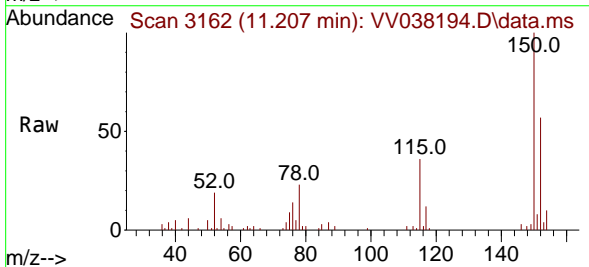
Instrument : MSVOA\_V  
 ClientSampleId :



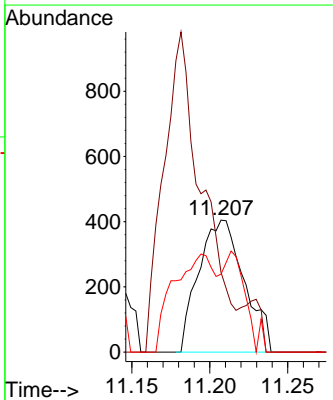
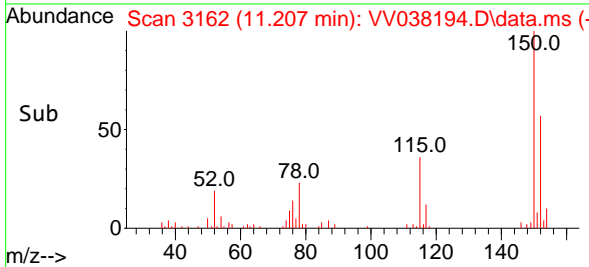
Tgt Ion:146 Resp: 277  
 Ion Ratio Lower Upper  
 146 100  
 111 0.0 28.2 52.4#  
 148 54.6 44.2 82.2

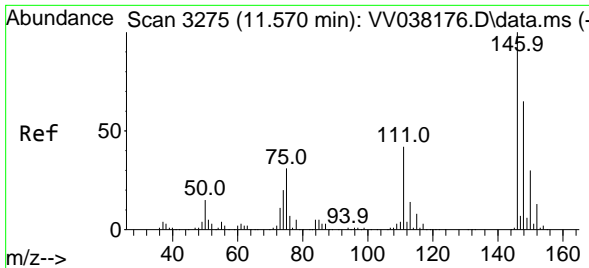


#65  
 1,4-Dichlorobenzene  
 Concen: 0.024 ug/L  
 RT: 11.207 min Scan# 3162  
 Delta R.T. 0.007 min  
 Lab File: VV038194.D  
 Acq: 19 Nov 2024 22:12



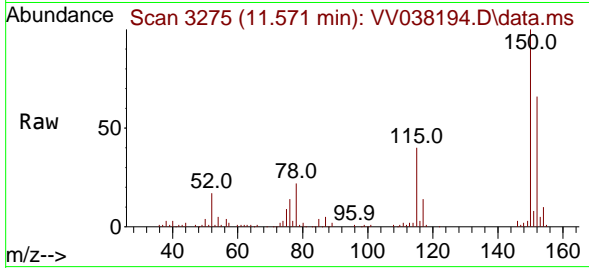
Tgt Ion:146 Resp: 825  
 Ion Ratio Lower Upper  
 146 100  
 111 60.5 27.4 50.8#  
 148 59.0 44.4 82.4



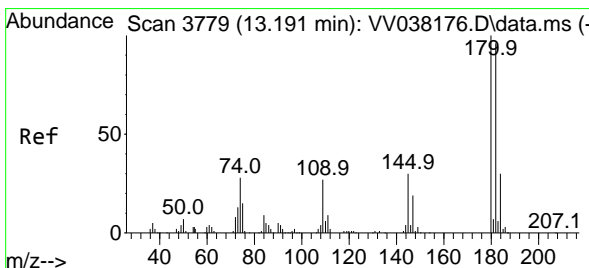
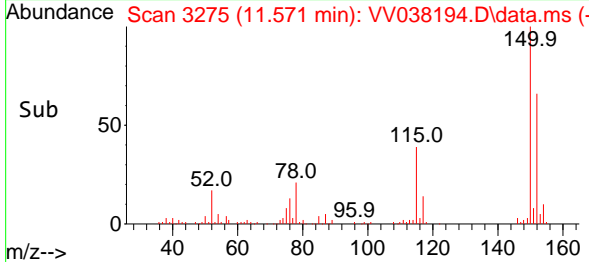
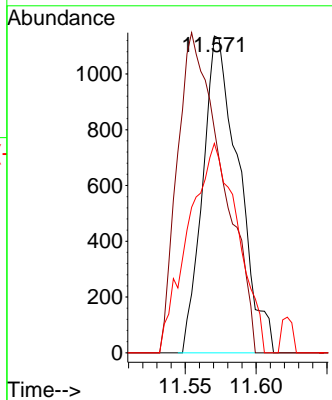


#67  
 1,2-Dichlorobenzene  
 Concen: 0.065 ug/L  
 RT: 11.571 min Scan# 31  
 Delta R.T. 0.000 min  
 Lab File: VV038194.D  
 Acq: 19 Nov 2024 22:12

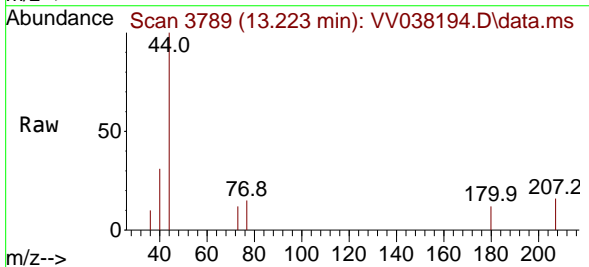
Instrument : MSVOA\_V  
 ClientSampleId :



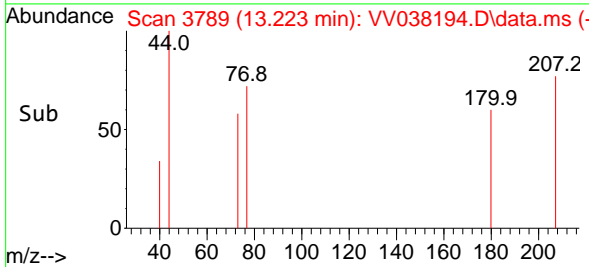
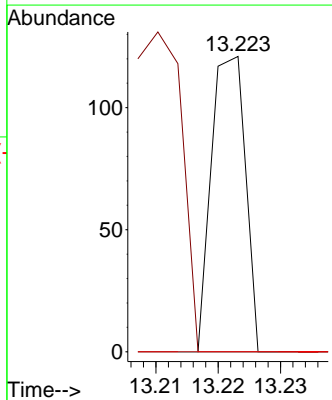
Tgt Ion:146 Resp: 2012  
 Ion Ratio Lower Upper  
 146 100  
 111 70.6 34.2 51.2#  
 148 66.1 51.0 76.4

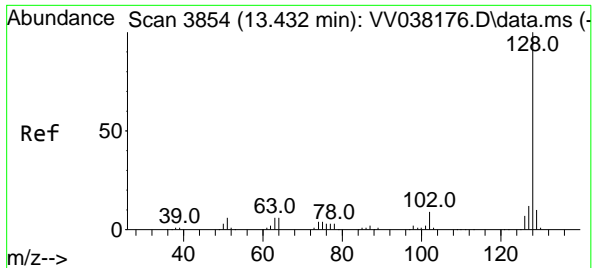


#70  
 1,2,4-trichlorobenzene  
 Concen: 0.002 ug/L  
 RT: 13.223 min Scan# 3789  
 Delta R.T. 0.032 min  
 Lab File: VV038194.D  
 Acq: 19 Nov 2024 22:12



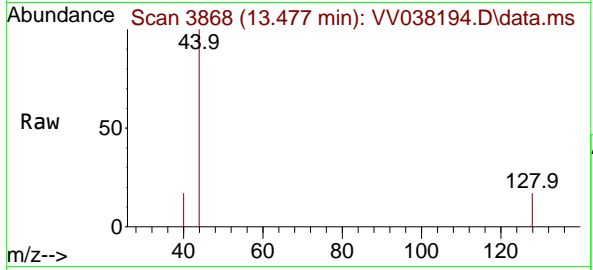
Tgt Ion:180 Resp: 46  
 Ion Ratio Lower Upper  
 180 100  
 182 202.2 73.8 110.8#  
 145 0.0 24.6 37.0#





#71  
 Naphthalene  
 Concen: 0.002 ug/L  
 RT: 13.477 min Scan# 3854  
 Delta R.T. 0.045 min  
 Lab File: VV038194.D  
 Acq: 19 Nov 2024 22:12

Instrument : MSVOA\_V  
 ClientSampleId :



Tgt Ion:128 Resp: 75

Ion	Ratio	Lower	Upper
128	100		
129	0.0	8.5	12.7#
127	0.0	10.1	15.1#

