

Data Path : Z:\voasrv\HPCHEM1\MSVOA\_V\Data\VW112022\  
 Data File : VV029247.D  
 Acq On : 21 Nov 2022 00:58  
 Operator : SY/MD  
 Sample : N5666-08DL 5X  
 Misc : 25.0mL/MSVOA\_V/WATER  
 ALS Vial : 37 Sample Multiplier: 1

Instrument :  
 MSVOA\_V  
 ClientSampleId :  
 BHB27DL

Quant Time: Nov 21 03:56:36 2022  
 Quant Method : Z:\voasrv\HPCHEM1\MSVOA\_V\Method\SFAMVTR111122WMA.M  
 Quant Title : TRACE VOA SFAM1.0  
 QLast Update : Mon Nov 21 03:37:08 2022  
 Response via : Initial Calibration

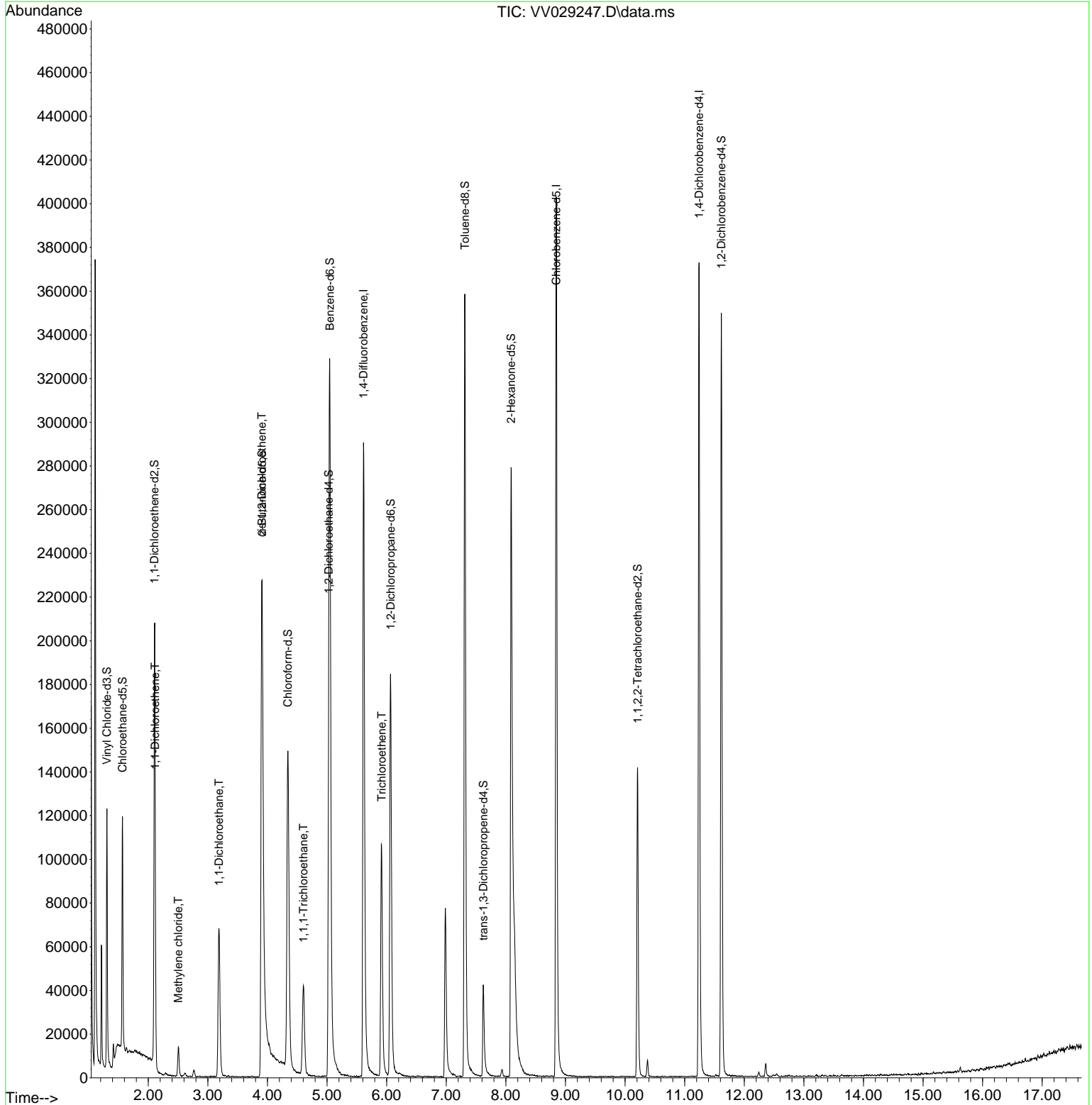
Compound	R.T.	QIon	Response	Conc	Units	Dev(Min)
Internal Standards						
1) 1,4-Difluorobenzene	5.612	114	278557	5.000	ug/L	0.00
28) Chlorobenzene-d5	8.847	117	244963	5.000	ug/L	0.00
58) 1,4-Dichlorobenzene-d4	11.242	152	107375	5.000	ug/L	0.00
System Monitoring Compounds						
4) Vinyl Chloride-d3	1.307	65	75421	4.441	ug/L	0.00
Spiked Amount	5.000	Range 40 - 130	Recovery =	88.800%		
7) Chloroethane-d5	1.568	69	68803	4.609	ug/L	0.00
Spiked Amount	5.000	Range 65 - 130	Recovery =	92.200%		
11) 1,1-Dichloroethene-d2	2.105	63	97791	3.160	ug/L	0.00
Spiked Amount	5.000	Range 60 - 125	Recovery =	63.200%		
20) 2-Butanone-d5	3.908	46	111861	39.350	ug/L	0.01
Spiked Amount	50.000	Range 40 - 130	Recovery =	78.700%		
24) Chloroform-d	4.342	84	161146	4.622	ug/L	0.00
Spiked Amount	5.000	Range 70 - 125	Recovery =	92.400%		
26) 1,2-Dichloroethane-d4	5.027	65	77272	4.926	ug/L	0.00
Spiked Amount	5.000	Range 70 - 130	Recovery =	98.600%		
32) Benzene-d6	5.047	84	318008	4.349	ug/L	0.00
Spiked Amount	5.000	Range 70 - 125	Recovery =	87.000%		
36) 1,2-Dichloropropane-d6	6.066	67	98332	4.816	ug/L	0.00
Spiked Amount	5.000	Range 60 - 140	Recovery =	96.400%		
41) Toluene-d8	7.313	98	258715	3.931	ug/L	0.00
Spiked Amount	5.000	Range 70 - 130	Recovery =	78.600%		
43) trans-1,3-Dichloroprop...	7.622	79	27853	4.183	ug/L	0.00
Spiked Amount	5.000	Range 55 - 130	Recovery =	83.600%		
46) 2-Hexanone-d5	8.088	63	141328	49.721	ug/L	0.00
Spiked Amount	50.000	Range 45 - 130	Recovery =	99.440%		
56) 1,1,2,2-Tetrachloroeth...	10.210	84	72883	5.149	ug/L	0.00
Spiked Amount	5.000	Range 65 - 120	Recovery =	103.000%		
66) 1,2-Dichlorobenzene-d4	11.615	152	98528	5.129	ug/L	0.00
Spiked Amount	5.000	Range 80 - 120	Recovery =	102.600%		
Target Compounds						
12) 1,1-Dichloroethene	2.117	96	9840	0.584	ug/L #	1
16) Methylene chloride	2.506	84	6152	0.282	ug/L	90
19) 1,1-Dichloroethane	3.188	63	72525	2.268	ug/L	99
22) cis-1,2-Dichloroethene	3.905	96	109245	5.494	ug/L	98
29) 1,1,1-Trichloroethane	4.606	97	34478	1.199	ug/L	97
34) Trichloroethene	5.915	95	40008	2.088	ug/L	96

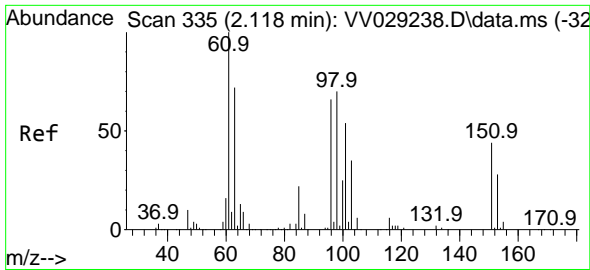
(#) = qualifier out of range (m) = manual integration (+) = signals summed

Data Path : Z:\voasrv\HPCHEM1\MSVOA\_V\Data\VV112022\  
 Data File : VV029247.D  
 Acq On : 21 Nov 2022 00:58  
 Operator : SY/MD  
 Sample : N5666-08DL 5X  
 Misc : 25.0mL/MSVOA\_V/WATER  
 ALS Vial : 37 Sample Multiplier: 1

Instrument :  
 MSVOA\_V  
 ClientSampleId :  
 BHB27DL

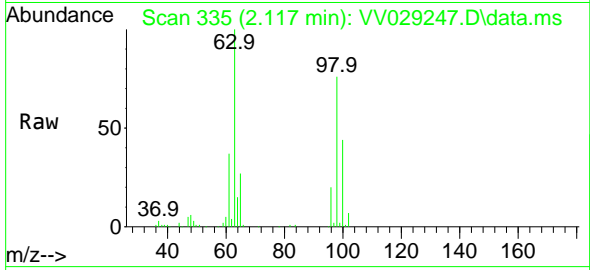
Quant Time: Nov 21 03:56:36 2022  
 Quant Method : Z:\voasrv\HPCHEM1\MSVOA\_V\Method\SFAMVTR111122WMA.M  
 Quant Title : TRACE VOA SFAM1.0  
 QLast Update : Mon Nov 21 03:37:08 2022  
 Response via : Initial Calibration



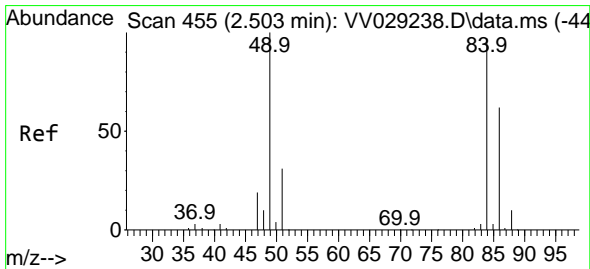
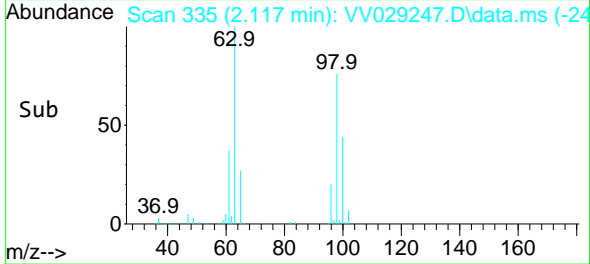
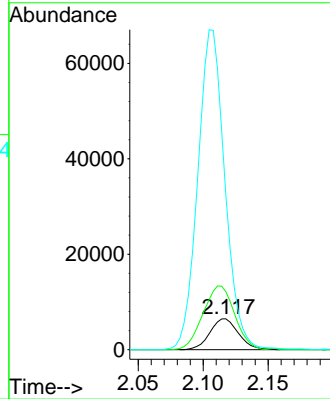


#12  
 1,1-Dichloroethene  
 Concen: 0.584 ug/L  
 RT: 2.117 min Scan# 31  
 Delta R.T. -0.000 min  
 Lab File: VV029247.D  
 Acq: 21 Nov 2022 00:58

Instrument : MSVOA\_V  
 ClientSampleId : BHB27DL

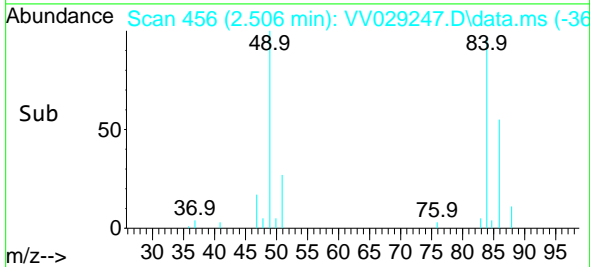
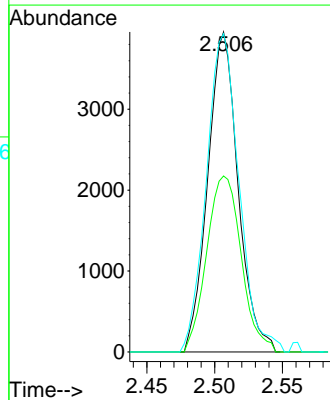
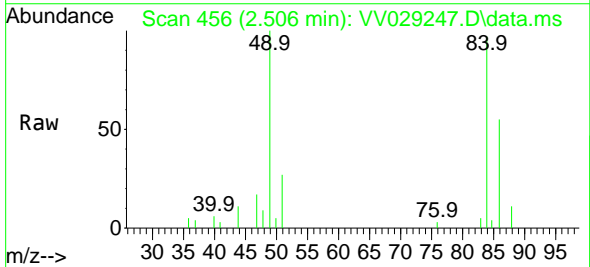


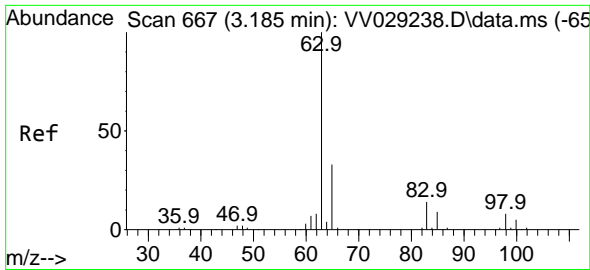
Tgt Ion: 96 Resp: 9840  
 Ion Ratio Lower Upper  
 96 100  
 61 188.2 104.2 193.4  
 63 502.4 75.9 140.9#



#16  
 Methylene chloride  
 Concen: 0.282 ug/L  
 RT: 2.506 min Scan# 456  
 Delta R.T. 0.003 min  
 Lab File: VV029247.D  
 Acq: 21 Nov 2022 00:58

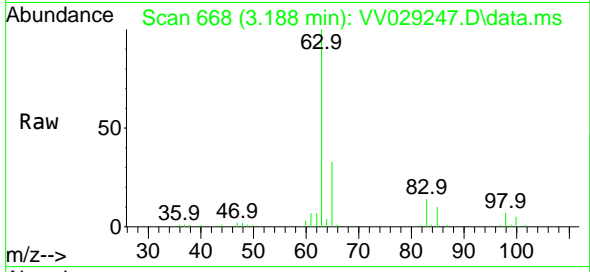
Tgt Ion: 84 Resp: 6152  
 Ion Ratio Lower Upper  
 84 100  
 86 55.0 45.8 85.0  
 49 99.4 75.5 140.1



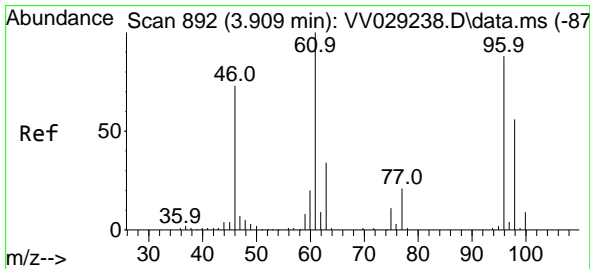
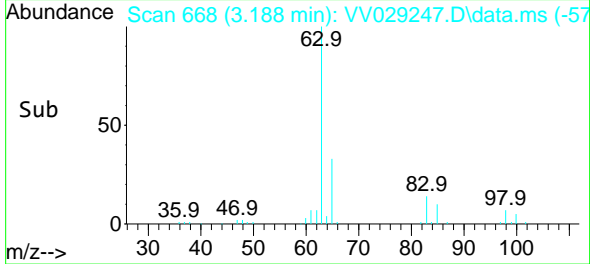
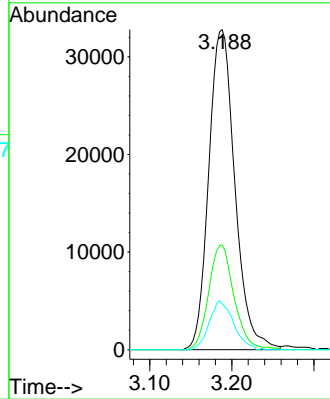


#19  
 1,1-Dichloroethane  
 Concen: 2.268 ug/L  
 RT: 3.188 min Scan# 667  
 Delta R.T. 0.003 min  
 Lab File: VV029247.D  
 Acq: 21 Nov 2022 00:58

Instrument :  
 MSVOA\_V  
 ClientSampleId :  
 BHB27DL

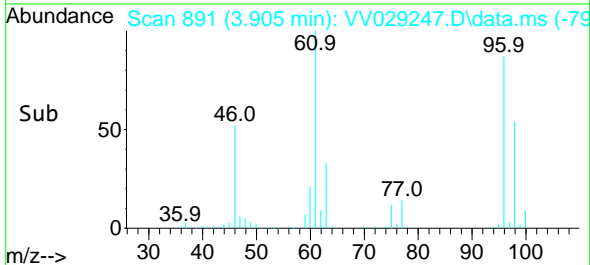
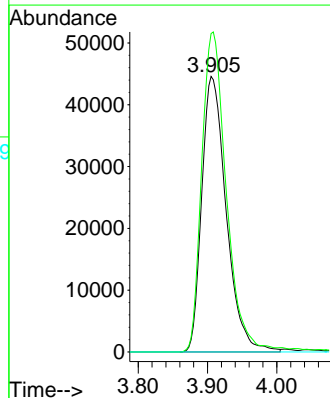
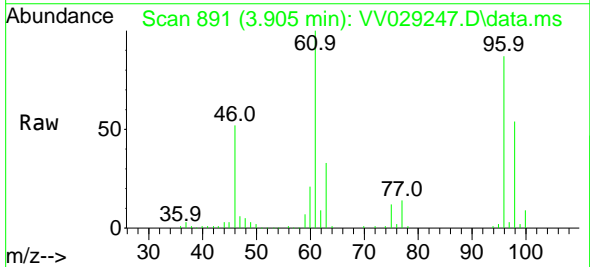


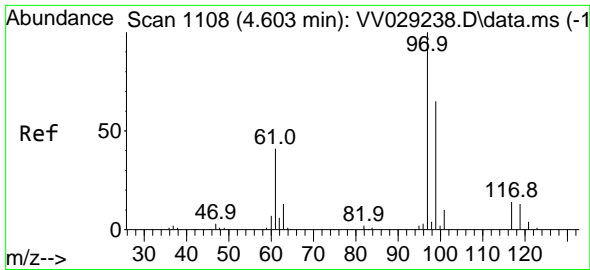
Tgt Ion: 63 Resp: 72525  
 Ion Ratio Lower Upper  
 63 100  
 65 32.7 23.0 42.6  
 83 14.3 9.4 17.6



#22  
 cis-1,2-Dichloroethene  
 Concen: 5.494 ug/L  
 RT: 3.905 min Scan# 891  
 Delta R.T. -0.003 min  
 Lab File: VV029247.D  
 Acq: 21 Nov 2022 00:58

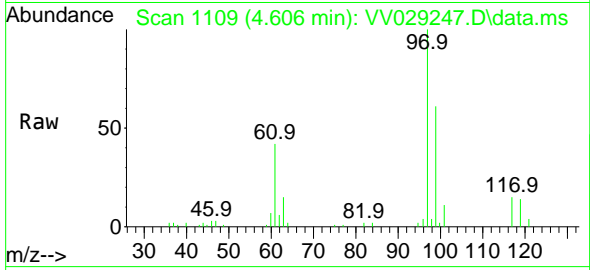
Tgt Ion: 96 Resp: 109245  
 Ion Ratio Lower Upper  
 96 100  
 61 115.6 82.3 152.9  
 68 0.0 0.0 0.0



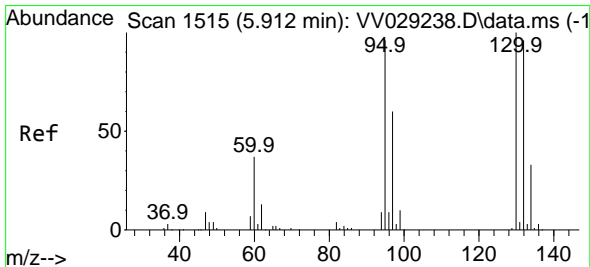
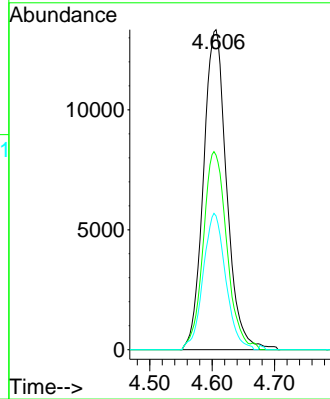
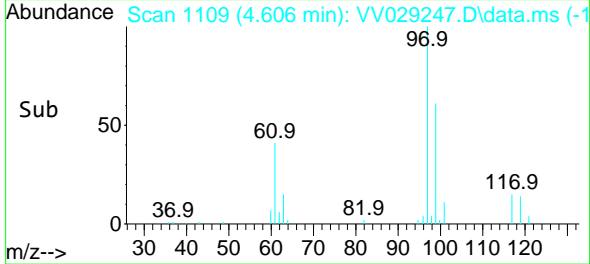


#29  
 1,1,1-Trichloroethane  
 Concen: 1.199 ug/L  
 RT: 4.606 min Scan# 1109  
 Delta R.T. 0.003 min  
 Lab File: VV029247.D  
 Acq: 21 Nov 2022 00:58

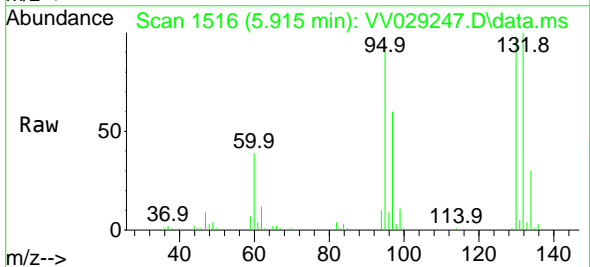
Instrument :  
 MSVOA\_V  
 ClientSampleId :  
 BHB27DL



Tgt Ion: 97 Resp: 34478  
 Ion Ratio Lower Upper  
 97 100  
 99 62.6 52.7 79.1  
 61 41.5 33.8 50.6



#34  
 Trichloroethene  
 Concen: 2.088 ug/L  
 RT: 5.915 min Scan# 1516  
 Delta R.T. 0.003 min  
 Lab File: VV029247.D  
 Acq: 21 Nov 2022 00:58



Tgt Ion: 95 Resp: 40008  
 Ion Ratio Lower Upper  
 95 100  
 97 63.2 45.6 84.8  
 132 106.2 69.1 128.3  
 130 104.0 74.9 139.1

