

Data Path : Z:\voasrv\HPCHEM1\MSVOA\_V\DATA\VV112024\  
 Data File : VV038214.D  
 Acq On : 20 Nov 2024 14:44  
 Operator : SY/MD  
 Sample : P4883-01  
 Misc : 25mL/MSVOA\_V/WATER  
 ALS Vial : 14 Sample Multiplier: 1

**Instrument :**  
 MSVOA\_V  
**ClientSampleId :**  
 BG3J7

Quant Time: Nov 21 01:49:22 2024  
 Quant Method : Z:\voasrv\HPCHEM1\MSVOA\_V\Method\SFAMVTR111924WMA.M  
 Quant Title : TRACE VOA SFAM1.0  
 QLast Update : Thu Nov 21 01:41:56 2024  
 Response via : Initial Calibration

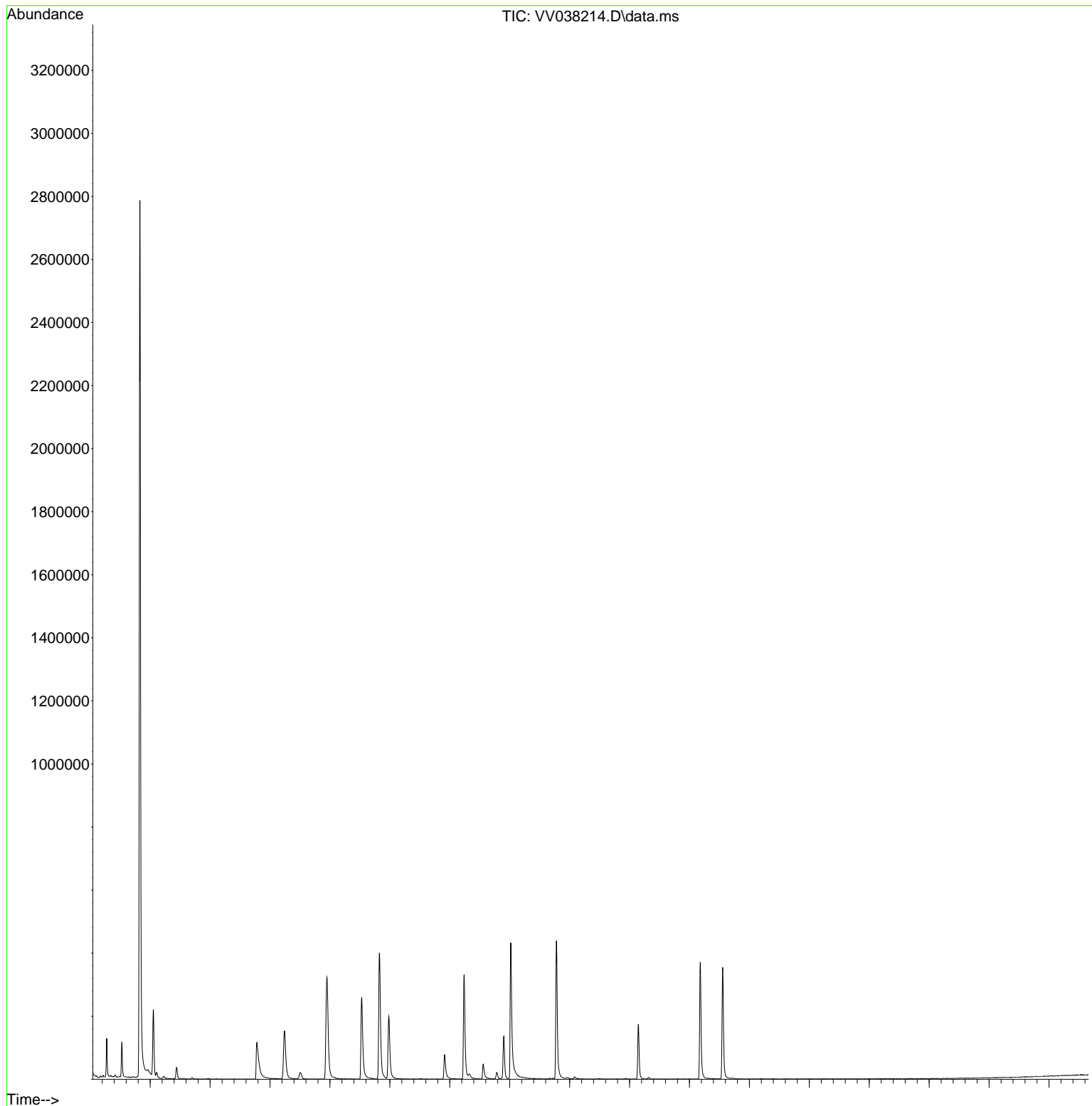
| Compound                           | R.T.   | QIon           | Response | Conc   | Units    | Dev(Min) |
|------------------------------------|--------|----------------|----------|--------|----------|----------|
| <b>Internal Standards</b>          |        |                |          |        |          |          |
| 1) 1,4-Difluorobenzene             | 5.529  | 114            | 245974   | 5.000  | ug/L     | 0.00     |
| 28) Chlorobenzene-d5               | 8.780  | 117            | 268596   | 5.000  | ug/L     | 0.00     |
| 58) 1,4-Dichlorobenzene-d4         | 11.178 | 152            | 110292   | 5.000  | ug/L     | 0.00     |
| <b>System Monitoring Compounds</b> |        |                |          |        |          |          |
| 4) Vinyl Chloride-d3               | 1.275  | 65             | 75881    | 4.025  | ug/L     | 0.00     |
| Spiked Amount                      | 5.000  | Range 40 - 130 | Recovery | =      | 80.400%  |          |
| 7) Chloroethane-d5                 | 1.526  | 69             | 73127    | 4.795  | ug/L     | 0.00     |
| Spiked Amount                      | 5.000  | Range 65 - 130 | Recovery | =      | 96.000%  |          |
| 11) 1,1-Dichloroethene-d2          | 2.053  | 65             | 33657    | 4.148  | ug/L     | 0.00     |
| Spiked Amount                      | 5.000  | Range 60 - 125 | Recovery | =      | 83.000%  |          |
| 20) 2-Butanone-d5                  | 3.780  | 46             | 189109   | 50.141 | ug/L     | -0.03    |
| Spiked Amount                      | 50.000 | Range 40 - 130 | Recovery | =      | 100.280% |          |
| 24) Chloroform-d                   | 4.239  | 84             | 174591   | 4.772  | ug/L     | 0.00     |
| Spiked Amount                      | 5.000  | Range 70 - 125 | Recovery | =      | 95.400%  |          |
| 26) 1,2-Dichloroethane-d4          | 4.937  | 65             | 87716    | 5.343  | ug/L     | 0.00     |
| Spiked Amount                      | 5.000  | Range 70 - 130 | Recovery | =      | 106.800% |          |
| 32) Benzene-d6                     | 4.953  | 84             | 308172   | 4.439  | ug/L     | 0.00     |
| Spiked Amount                      | 5.000  | Range 70 - 125 | Recovery | =      | 88.800%  |          |
| 36) 1,2-Dichloropropane-d6         | 5.982  | 67             | 103452   | 4.843  | ug/L     | 0.00     |
| Spiked Amount                      | 5.000  | Range 60 - 140 | Recovery | =      | 96.800%  |          |
| 41) Toluene-d8                     | 7.239  | 98             | 245828   | 3.827  | ug/L     | 0.00     |
| Spiked Amount                      | 5.000  | Range 70 - 130 | Recovery | =      | 76.600%  |          |
| 43) trans-1,3-Dichloroprop...      | 7.558  | 79             | 36057    | 4.540  | ug/L     | 0.00     |
| Spiked Amount                      | 5.000  | Range 55 - 130 | Recovery | =      | 90.800%  |          |
| 46) 2-Hexanone-d5                  | 8.017  | 63             | 164925   | 53.422 | ug/L     | 0.00     |
| Spiked Amount                      | 50.000 | Range 45 - 130 | Recovery | =      | 106.840% |          |
| 56) 1,1,2,2-Tetrachloroeth...      | 10.146 | 84             | 86986    | 4.797  | ug/L     | 0.00     |
| Spiked Amount                      | 5.000  | Range 65 - 120 | Recovery | =      | 96.000%  |          |
| 66) 1,2-Dichlorobenzene-d4         | 11.554 | 152            | 100509   | 5.349  | ug/L     | 0.00     |
| Spiked Amount                      | 5.000  | Range 80 - 120 | Recovery | =      | 107.000% |          |
| <b>Target Compounds</b>            |        |                |          |        |          |          |
| 13) Acetone                        | 2.108  | 43             | 13769    | 4.936  | ug/L     | 93       |
| 16) Methylene chloride             | 2.442  | 84             | 17307    | 0.864  | ug/L     | 98       |
| 22) cis-1,2-Dichloroethene         | 3.812  | 96             | 7829     | 0.409  | ug/L     | 92       |
| 29) 1,1,1-Trichloroethane          | 4.503  | 97             | 18386    | 0.571  | ug/L     | 98       |
| 34) Trichloroethene                | 5.825  | 95             | 154027   | 7.489  | ug/L     | 99       |
| 47) Tetrachloroethene              | 7.902  | 164            | 31546    | 1.909  | ug/L     | 98       |

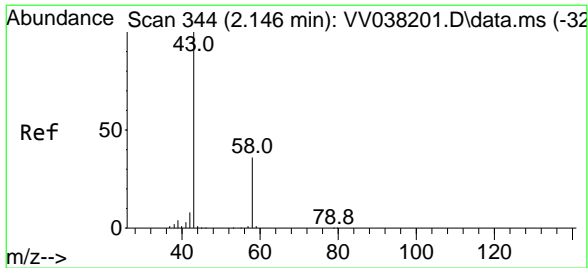
(#) = qualifier out of range (m) = manual integration (+) = signals summed

Data Path : Z:\voasrv\HPCHEM1\MSVOA\_V\DATA\VV112024\  
 Data File : VV038214.D  
 Acq On : 20 Nov 2024 14:44  
 Operator : SY/MD  
 Sample : P4883-01  
 Misc : 25mL/MSVOA\_V/WATER  
 ALS Vial : 14 Sample Multiplier: 1

**Instrument :**  
 MSVOA\_V  
**ClientSampleId :**  
 BG3J7

Quant Time: Nov 21 01:49:22 2024  
 Quant Method : Z:\voasrv\HPCHEM1\MSVOA\_V\Method\SFAMVTR111924WMA.M  
 Quant Title : TRACE VOA SFAM1.0  
 QLast Update : Thu Nov 21 01:41:56 2024  
 Response via : Initial Calibration

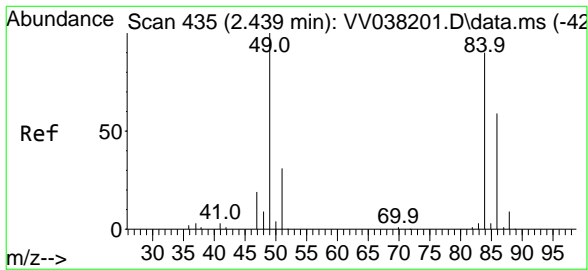
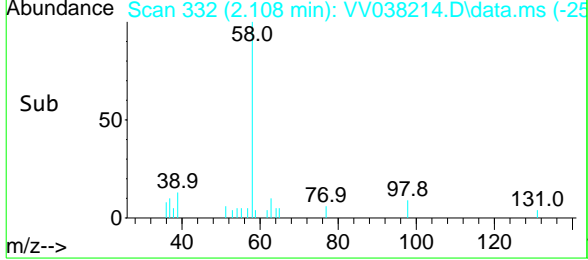
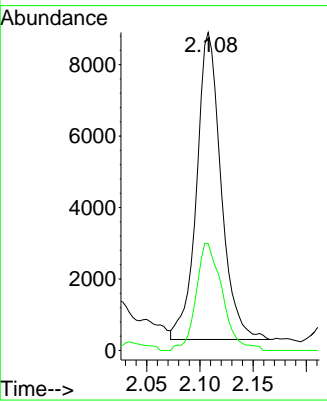
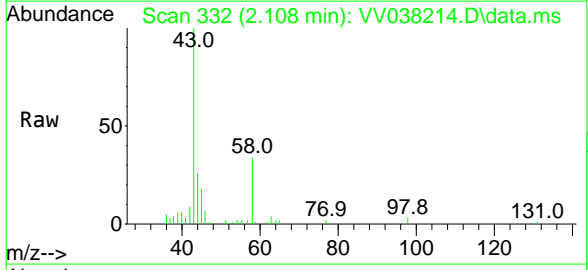




#13  
 Acetone  
 Concen: 4.936 ug/L  
 RT: 2.108 min Scan# 333  
 Delta R.T. -0.039 min  
 Lab File: VV038214.D  
 Acq: 20 Nov 2024 14:44

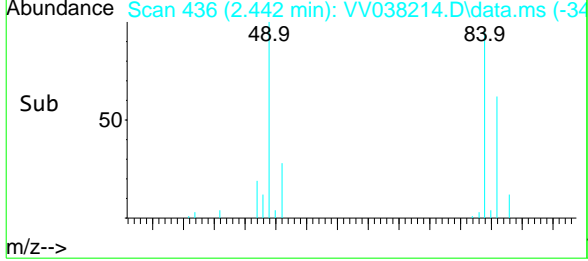
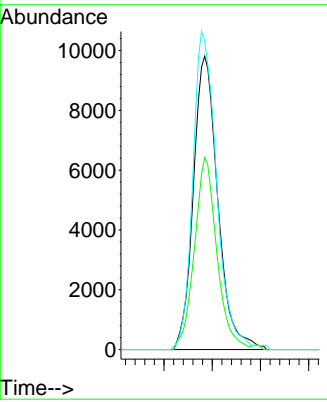
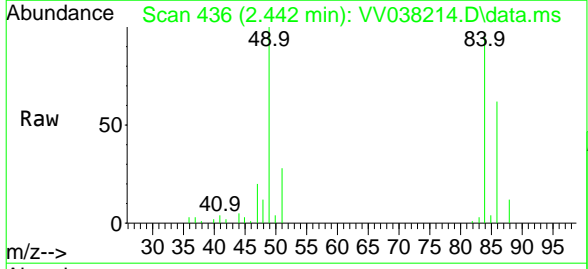
Instrument : MSVOA\_V  
 ClientSampleId : BG3J7

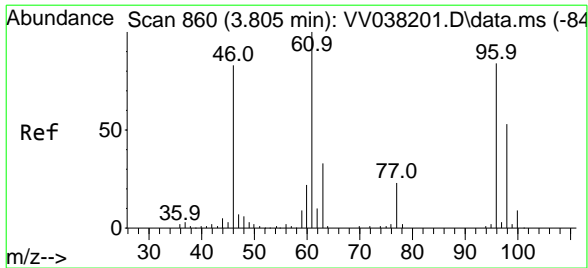
| Tgt Ion | Ratio | Lower | Upper |
|---------|-------|-------|-------|
| 43      | 100   |       |       |
| 58      | 37.4  | 0.0   | 67.2  |



#16  
 Methylene chloride  
 Concen: 0.864 ug/L  
 RT: 2.442 min Scan# 436  
 Delta R.T. 0.003 min  
 Lab File: VV038214.D  
 Acq: 20 Nov 2024 14:44

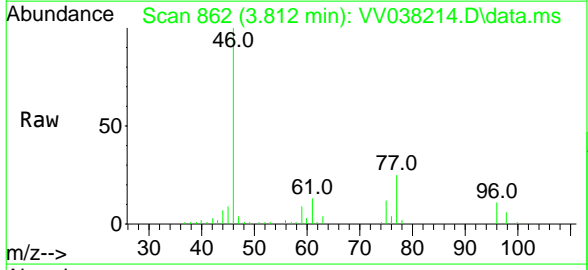
| Tgt Ion | Ratio | Lower | Upper |
|---------|-------|-------|-------|
| 84      | 100   |       |       |
| 86      | 65.4  | 44.2  | 82.2  |
| 49      | 105.2 | 74.9  | 139.1 |



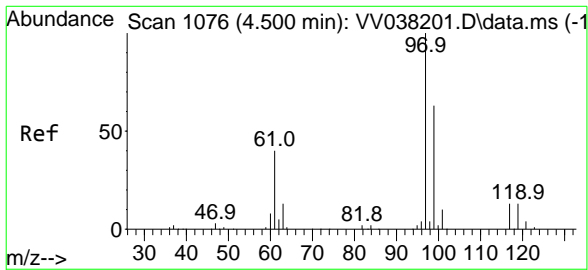
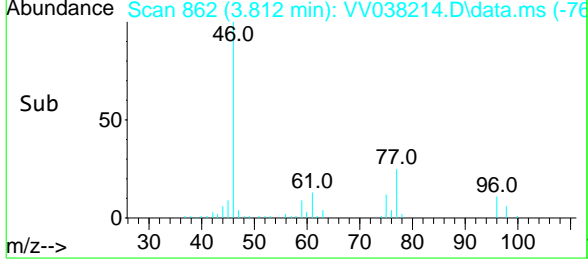
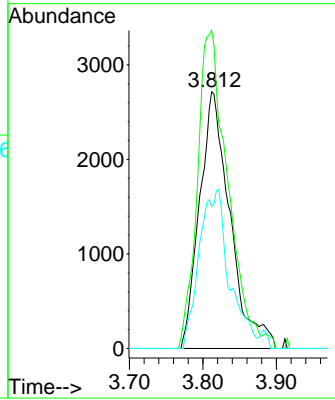


#22  
 cis-1,2-Dichloroethene  
 Concen: 0.409 ug/L  
 RT: 3.812 min Scan# 861  
 Delta R.T. 0.006 min  
 Lab File: VV038214.D  
 Acq: 20 Nov 2024 14:44

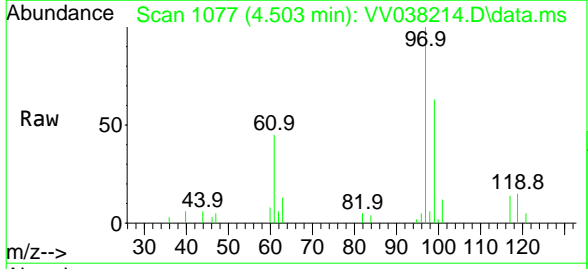
Instrument : MSVOA\_V  
 ClientSampleId : BG3J7



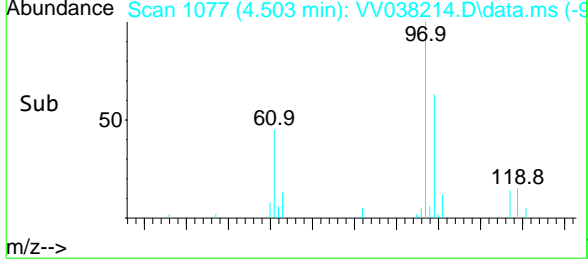
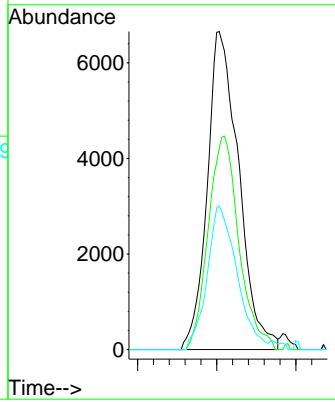
| Tgt Ion | Resp  | Lower | Upper |
|---------|-------|-------|-------|
| 96      | 7829  |       |       |
| 96      | 100   |       |       |
| 61      | 123.9 | 82.7  | 153.5 |
| 98      | 55.3  | 46.3  | 85.9  |

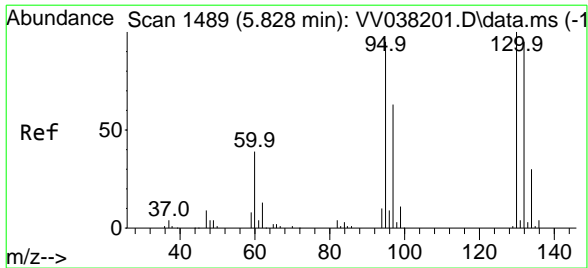


#29  
 1,1,1-Trichloroethane  
 Concen: 0.571 ug/L  
 RT: 4.503 min Scan# 1077  
 Delta R.T. 0.003 min  
 Lab File: VV038214.D  
 Acq: 20 Nov 2024 14:44



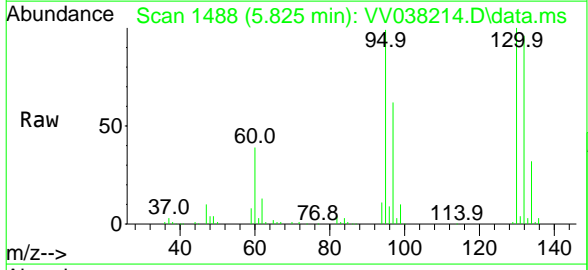
| Tgt Ion | Resp  | Lower | Upper |
|---------|-------|-------|-------|
| 97      | 18386 |       |       |
| 97      | 100   |       |       |
| 99      | 65.4  | 51.8  | 77.8  |
| 61      | 42.7  | 32.2  | 48.2  |





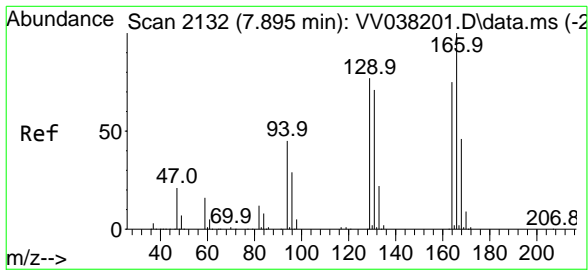
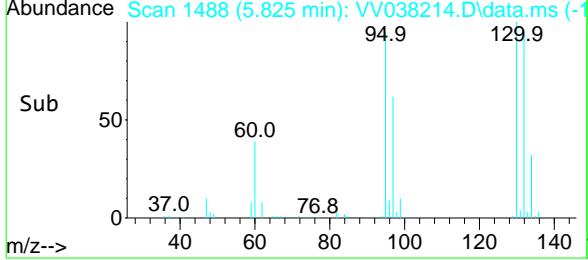
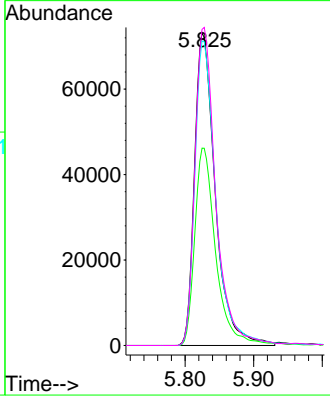
#34  
 Trichloroethene  
 Concen: 7.489 ug/L  
 RT: 5.825 min Scan# 1488  
 Delta R.T. -0.003 min  
 Lab File: VV038214.D  
 Acq: 20 Nov 2024 14:44

Instrument : MSVOA\_V  
 ClientSampleId : BG3J7



Tgt Ion: 95 Resp: 154027

| Ion | Ratio | Lower | Upper |
|-----|-------|-------|-------|
| 95  | 100   |       |       |
| 97  | 63.1  | 44.8  | 83.2  |
| 132 | 97.4  | 68.3  | 126.8 |
| 130 | 101.1 | 70.2  | 130.4 |



#47  
 Tetrachloroethene  
 Concen: 1.909 ug/L  
 RT: 7.902 min Scan# 2134  
 Delta R.T. 0.006 min  
 Lab File: VV038214.D  
 Acq: 20 Nov 2024 14:44

Tgt Ion: 164 Resp: 31546

| Ion | Ratio | Lower | Upper |
|-----|-------|-------|-------|
| 164 | 100   |       |       |
| 129 | 98.4  | 68.5  | 127.1 |
| 131 | 90.6  | 64.8  | 120.4 |
| 166 | 122.5 | 88.3  | 163.9 |

