

Data Path : Z:\voasrv\HPCHEM1\MSVOA_V\Data\VW112222\
 Data File : VV029276.D
 Acq On : 22 Nov 2022 20:58
 Operator : SY/MD
 Sample : N5651-09
 Misc : 25.0mL/MSVOA_V/WATER
 ALS Vial : 16 Sample Multiplier: 1

Instrument :
 MSVOA_V
ClientSampleId :
 BH1K1

Quant Time: Nov 23 04:46:24 2022
 Quant Method : Z:\voasrv\HPCHEM1\MSVOA_V\Method\SFAMVTR112222WMA.M
 Quant Title : TRACE VOA SFAM1.0
 QLast Update : Wed Nov 23 01:46:18 2022
 Response via : Initial Calibration

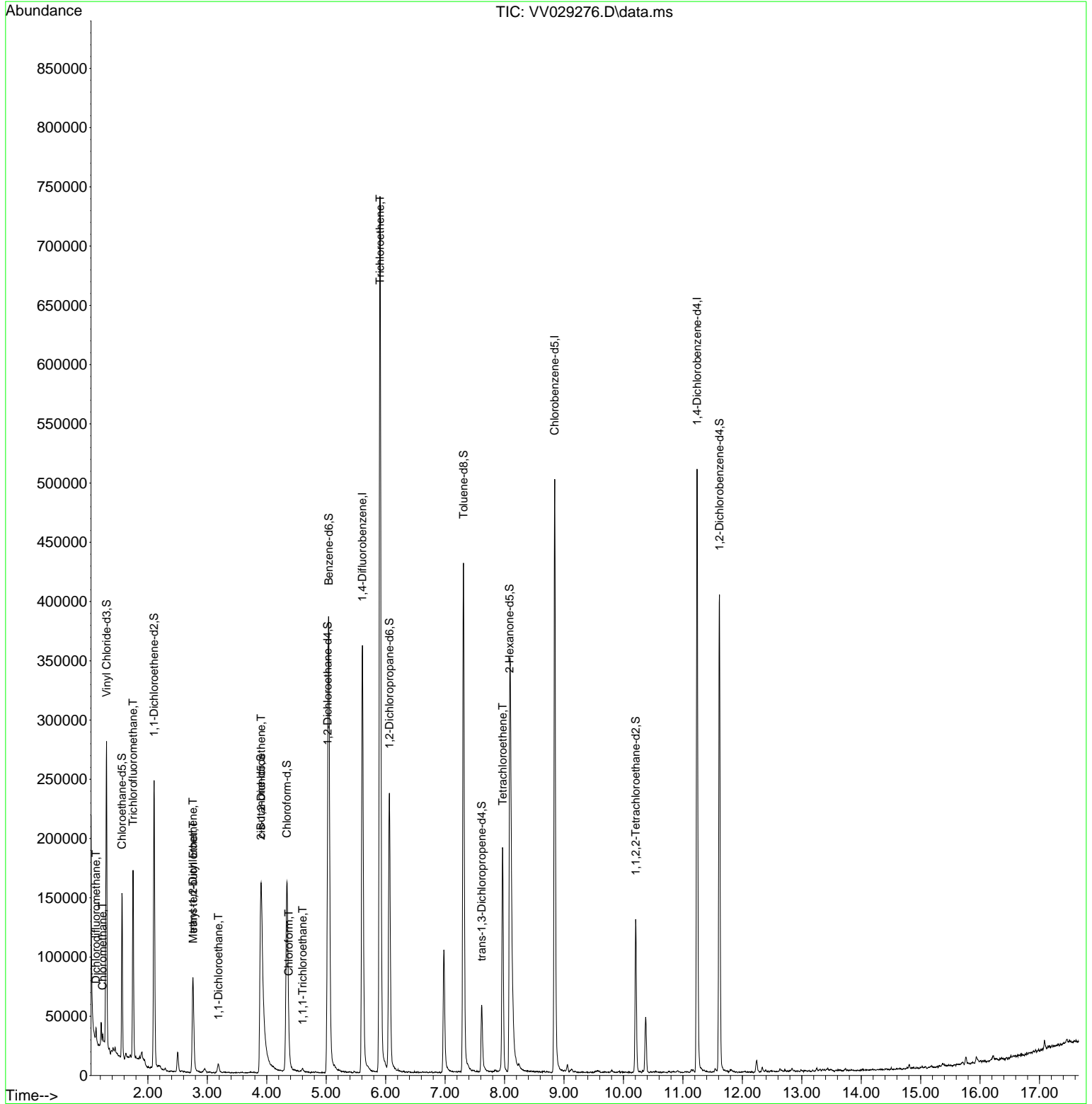
Compound	R.T.	QIon	Response	Conc	Units	Dev(Min)
Internal Standards						
1) 1,4-Difluorobenzene	5.609	114	305377	5.000	ug/L	0.00
28) Chlorobenzene-d5	8.844	117	271731	5.000	ug/L	0.00
58) 1,4-Dichlorobenzene-d4	11.239	152	123692	5.000	ug/L	0.00
System Monitoring Compounds						
4) Vinyl Chloride-d3	1.304	65	102108	3.505	ug/L	0.00
Spiked Amount	5.000	Range 40 - 130	Recovery	=	70.200%	
7) Chloroethane-d5	1.564	69	88458	3.879	ug/L	0.00
Spiked Amount	5.000	Range 65 - 130	Recovery	=	77.600%	
11) 1,1-Dichloroethene-d2	2.105	63	132867	2.678	ug/L	0.00
Spiked Amount	5.000	Range 60 - 125	Recovery	=	53.600%#	
20) 2-Butanone-d5	3.902	46	220329	51.241	ug/L	0.00
Spiked Amount	50.000	Range 40 - 130	Recovery	=	102.480%	
24) Chloroform-d	4.339	84	168034	4.068	ug/L	0.00
Spiked Amount	5.000	Range 70 - 125	Recovery	=	81.400%	
26) 1,2-Dichloroethane-d4	5.024	65	87133	4.459	ug/L	0.00
Spiked Amount	5.000	Range 70 - 130	Recovery	=	89.200%	
32) Benzene-d6	5.043	84	353180	3.986	ug/L	0.00
Spiked Amount	5.000	Range 70 - 125	Recovery	=	79.800%	
36) 1,2-Dichloropropane-d6	6.063	67	122181	4.365	ug/L	0.00
Spiked Amount	5.000	Range 60 - 140	Recovery	=	87.200%	
41) Toluene-d8	7.310	98	291267	3.649	ug/L	0.00
Spiked Amount	5.000	Range 70 - 130	Recovery	=	73.000%	
43) trans-1,3-Dichloroprop...	7.616	79	34838	3.738	ug/L	0.00
Spiked Amount	5.000	Range 55 - 130	Recovery	=	74.800%	
46) 2-Hexanone-d5	8.085	63	84970	50.856	ug/L	0.00
Spiked Amount	50.000	Range 45 - 130	Recovery	=	101.720%	
56) 1,1,2,2-Tetrachloroeth...	10.207	84	65012	4.672	ug/L	0.00
Spiked Amount	5.000	Range 65 - 120	Recovery	=	93.400%	
66) 1,2-Dichlorobenzene-d4	11.616	152	99591	4.174	ug/L	0.00
Spiked Amount	5.000	Range 80 - 120	Recovery	=	83.400%	
Target Compounds						
2) Dichlorodifluoromethane	1.127	85	3681	0.144	ug/L	98
3) Chloromethane	1.240	50	3611	0.103	ug/L	98
9) Trichlorofluoromethane	1.751	101	90452	2.354	ug/L	99
17) Methyl tert-butyl Ether	2.764	73	25296	0.511	ug/L	96
18) trans-1,2-Dichloroethene	2.757	96	22228	0.971	ug/L	95
19) 1,1-Dichloroethane	3.185	63	7277	0.158	ug/L	97
22) cis-1,2-Dichloroethene	3.905	96	35751	1.431	ug/L	100
25) Chloroform	4.371	83	14060	0.320	ug/L	93
29) 1,1,1-Trichloroethane	4.603	97	2120	0.059	ug/L #	79
34) Trichloroethene	5.905	95	266257	10.225	ug/L	98
47) Tetrachloroethene	7.969	164	42018	2.457	ug/L	97

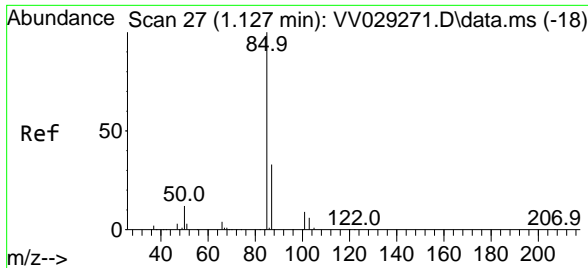
(#) = qualifier out of range (m) = manual integration (+) = signals summed

Data Path : Z:\voasrv\HPCHEM1\MSVOA_V\Data\VV112222\
 Data File : VV029276.D
 Acq On : 22 Nov 2022 20:58
 Operator : SY/MD
 Sample : N5651-09
 Misc : 25.0mL/MSVOA_V/WATER
 ALS Vial : 16 Sample Multiplier: 1

Instrument :
 MSVOA_V
 ClientSampleId :
 BH1K1

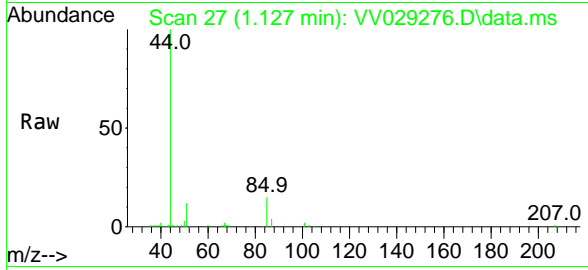
Quant Time: Nov 23 04:46:24 2022
 Quant Method : Z:\voasrv\HPCHEM1\MSVOA_V\Method\SFAMVTR112222WMA.M
 Quant Title : TRACE VOA SFAM1.0
 QLast Update : Wed Nov 23 01:46:18 2022
 Response via : Initial Calibration



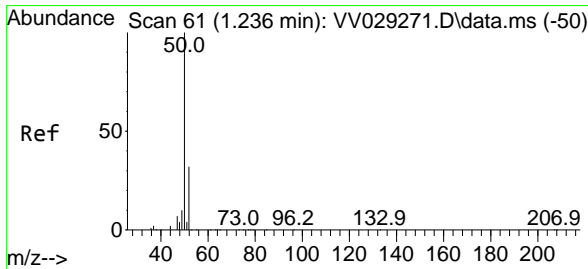
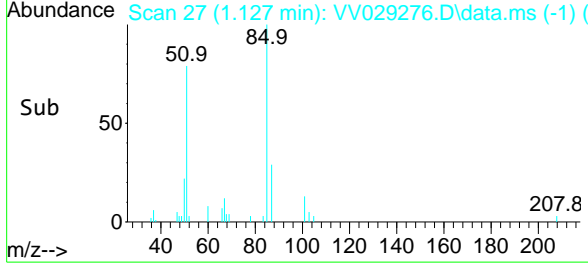
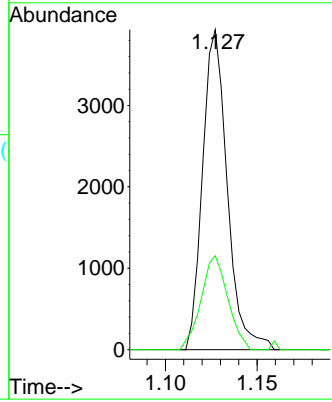


#2
 Dichlorodifluoromethane
 Concen: 0.144 ug/L
 RT: 1.127 min Scan# 21
 Delta R.T. 0.000 min
 Lab File: VV029276.D
 Acq: 22 Nov 2022 20:58

Instrument :
 MSVOA_V
 ClientSampleId :
 BH1K1

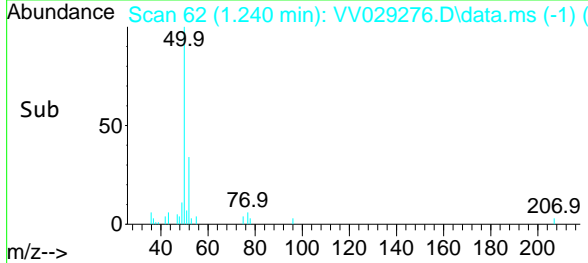
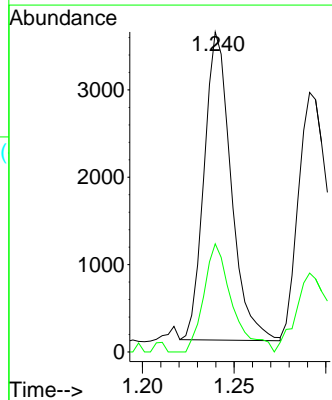
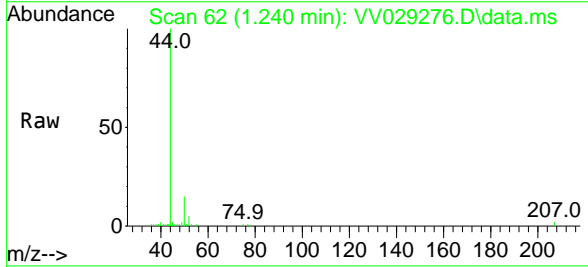


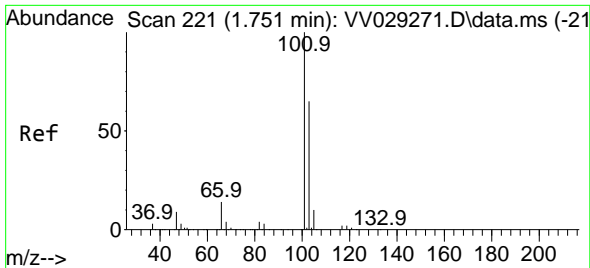
Tgt Ion: 85 Resp: 3681
 Ion Ratio Lower Upper
 85 100
 87 31.9 26.3 39.5



#3
 Chloromethane
 Concen: 0.103 ug/L
 RT: 1.240 min Scan# 62
 Delta R.T. 0.003 min
 Lab File: VV029276.D
 Acq: 22 Nov 2022 20:58

Tgt Ion: 50 Resp: 3611
 Ion Ratio Lower Upper
 50 100
 52 33.8 22.8 42.4

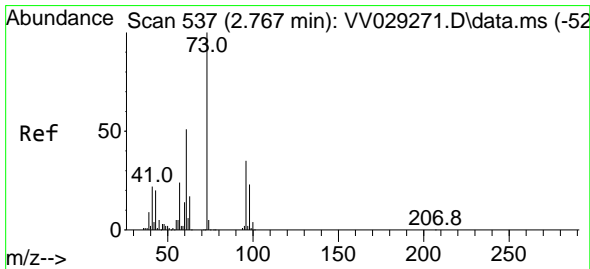
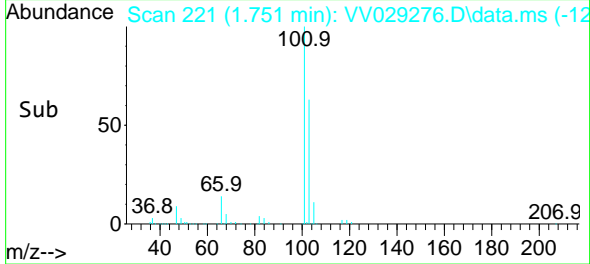
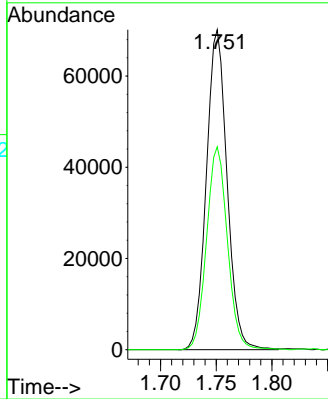
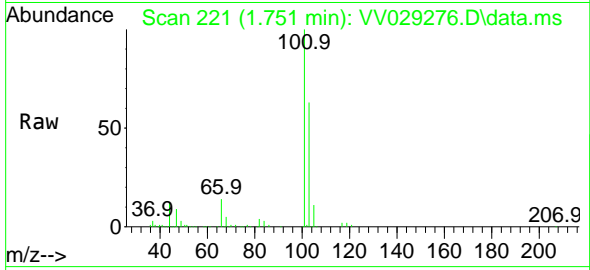




#9
 Trichlorofluoromethane
 Concen: 2.354 ug/L
 RT: 1.751 min Scan# 21
 Delta R.T. 0.000 min
 Lab File: VV029276.D
 Acq: 22 Nov 2022 20:58

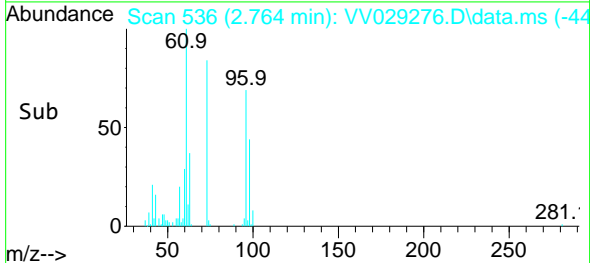
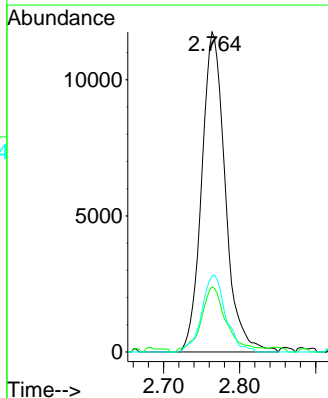
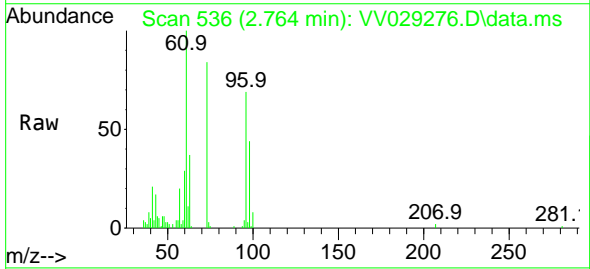
Instrument : MSVOA_V
 ClientSampleId : BH1K1

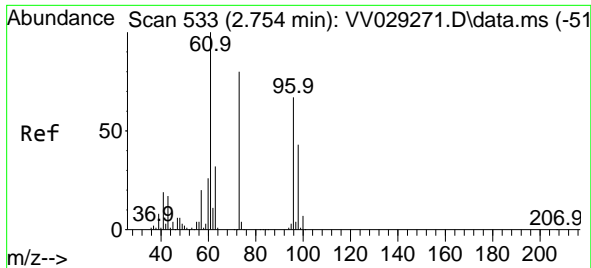
Tgt Ion:101 Resp: 90452
 Ion Ratio Lower Upper
 101 100
 103 64.0 51.7 77.5



#17
 Methyl tert-butyl Ether
 Concen: 0.511 ug/L
 RT: 2.764 min Scan# 536
 Delta R.T. -0.003 min
 Lab File: VV029276.D
 Acq: 22 Nov 2022 20:58

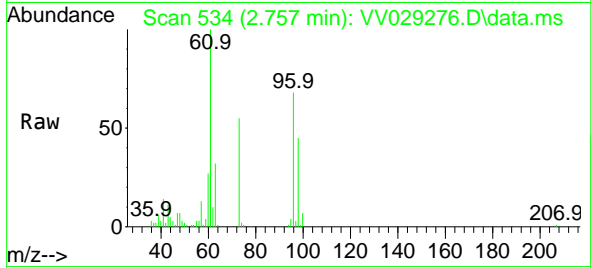
Tgt Ion: 73 Resp: 25296
 Ion Ratio Lower Upper
 73 100
 43 22.2 15.4 23.2
 57 24.3 18.9 28.3



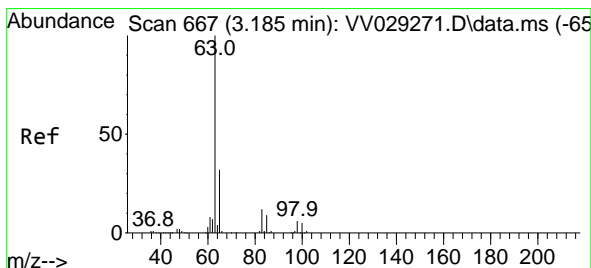
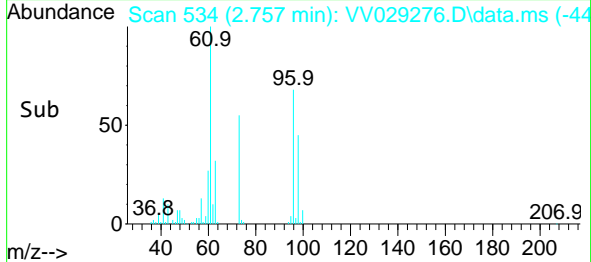
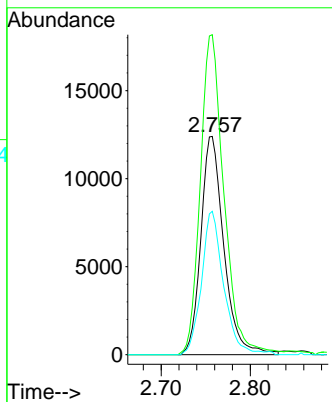


#18
 trans-1,2-Dichloroethene
 Concen: 0.971 ug/L
 RT: 2.757 min Scan# 511
 Delta R.T. 0.003 min
 Lab File: VV029276.D
 Acq: 22 Nov 2022 20:58

Instrument : MSVOA_V
 ClientSampleId : BH1K1

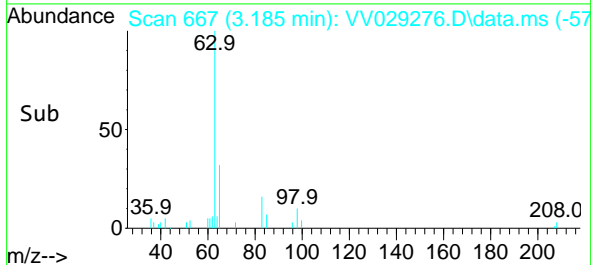
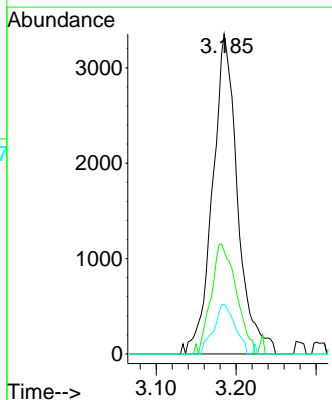
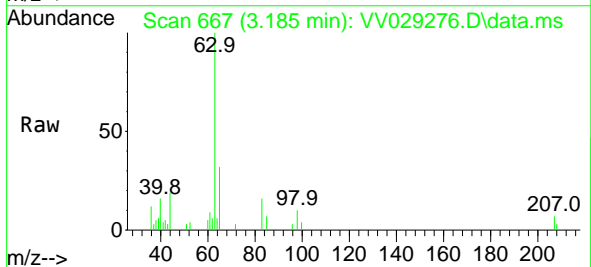


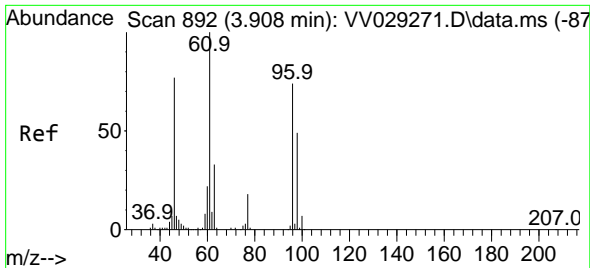
Tgt Ion: 96 Resp: 22228
 Ion Ratio Lower Upper
 96 100
 61 146.7 107.6 199.8
 98 65.7 44.3 82.3



#19
 1,1-Dichloroethane
 Concen: 0.158 ug/L
 RT: 3.185 min Scan# 667
 Delta R.T. 0.000 min
 Lab File: VV029276.D
 Acq: 22 Nov 2022 20:58

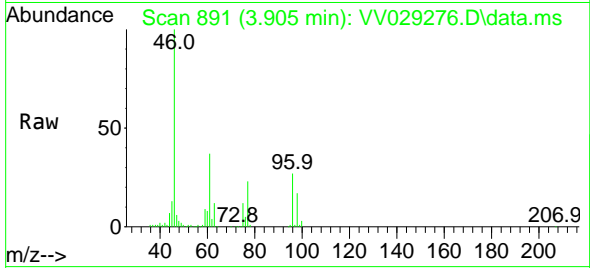
Tgt Ion: 63 Resp: 7277
 Ion Ratio Lower Upper
 63 100
 65 32.1 22.1 41.1
 83 15.6 9.0 16.8





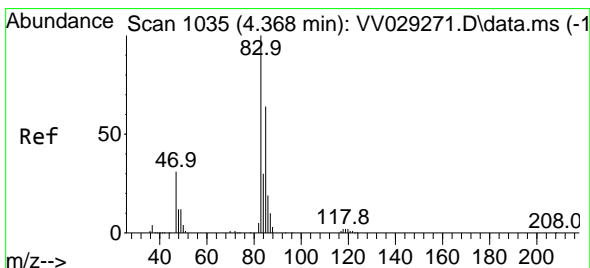
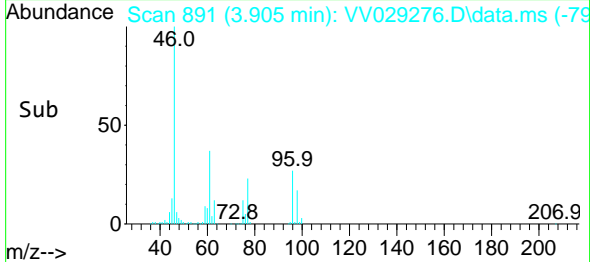
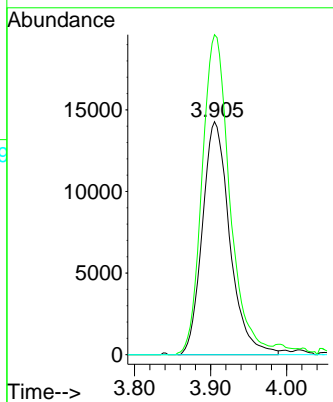
#22
 cis-1,2-Dichloroethene
 Concen: 1.431 ug/L
 RT: 3.905 min Scan# 891
 Delta R.T. -0.003 min
 Lab File: VV029276.D
 Acq: 22 Nov 2022 20:58

Instrument : MSVOA_V
 ClientSampleId : BH1K1



Tgt Ion: 96 Resp: 35751

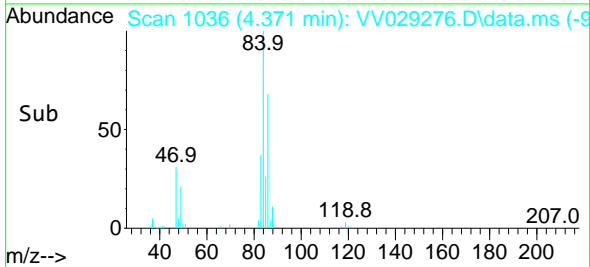
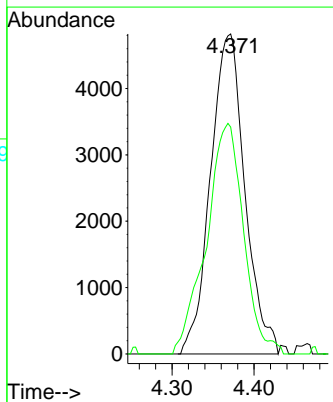
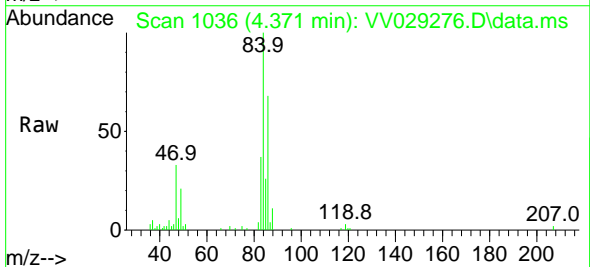
Ion	Ratio	Lower	Upper
96	100		
61	137.4	95.8	178.0
68	0.0	0.0	0.0

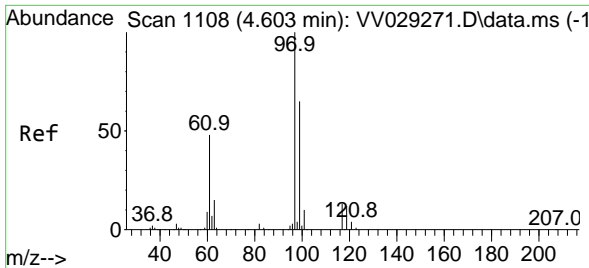


#25
 Chloroform
 Concen: 0.320 ug/L
 RT: 4.371 min Scan# 1036
 Delta R.T. 0.003 min
 Lab File: VV029276.D
 Acq: 22 Nov 2022 20:58

Tgt Ion: 83 Resp: 14060

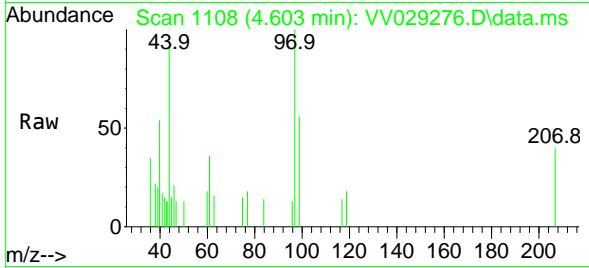
Ion	Ratio	Lower	Upper
83	100		
85	70.9	45.6	84.6





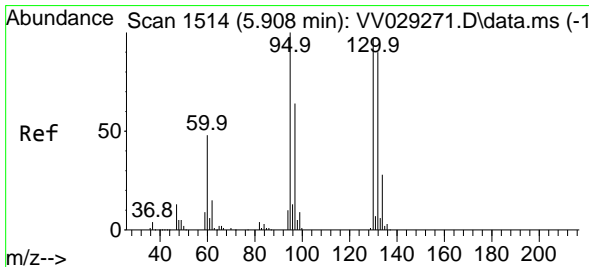
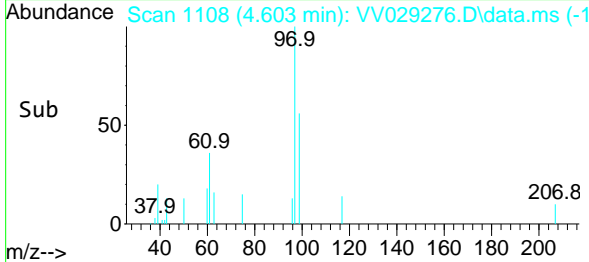
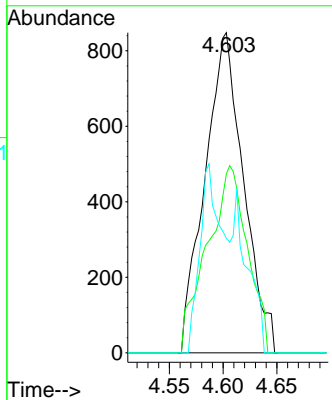
#29
 1,1,1-Trichloroethane
 Concen: 0.059 ug/L
 RT: 4.603 min Scan# 1108
 Delta R.T. 0.000 min
 Lab File: VV029276.D
 Acq: 22 Nov 2022 20:58

Instrument : MSVOA_V
 ClientSampleId : BH1K1



Tgt Ion: 97 Resp: 2120

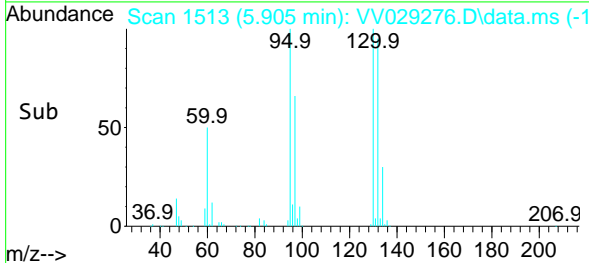
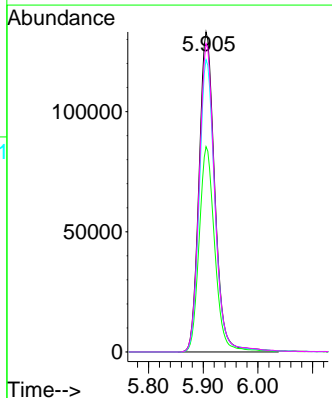
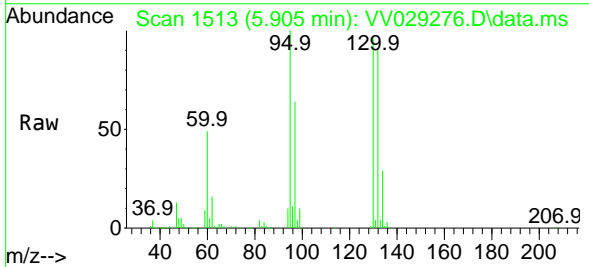
Ion	Ratio	Lower	Upper
97	100		
99	60.8	51.1	76.7
61	20.0	39.0	58.4

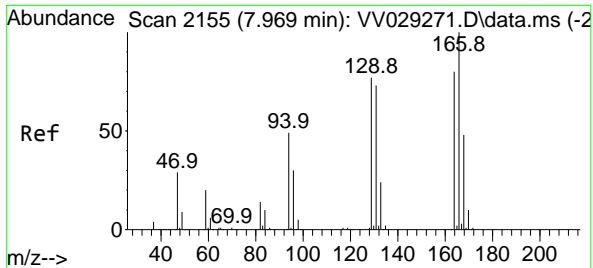


#34
 Trichloroethene
 Concen: 10.225 ug/L
 RT: 5.905 min Scan# 1513
 Delta R.T. -0.003 min
 Lab File: VV029276.D
 Acq: 22 Nov 2022 20:58

Tgt Ion: 95 Resp: 266257

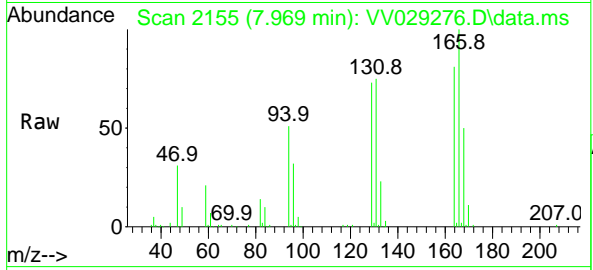
Ion	Ratio	Lower	Upper
95	100		
97	64.2	46.7	86.7
132	91.3	65.7	122.1
130	96.3	67.7	125.7





#47
 Tetrachloroethene
 Concen: 2.457 ug/L
 RT: 7.969 min Scan# 21
 Delta R.T. 0.000 min
 Lab File: VV029276.D
 Acq: 22 Nov 2022 20:58

Instrument : MSVOA_V
 ClientSampleId : BH1K1



Tgt Ion:164 Resp: 42018

Ion	Ratio	Lower	Upper
164	100		
129	90.4	68.3	126.8
131	92.1	65.2	121.0
166	123.2	88.1	163.7

