

Data Path : Z:\voasrv\HPCHEM1\MSVOA_V\DATA\VV112224\
 Data File : VV038291.D
 Acq On : 23 Nov 2024 00:44
 Operator : SY/MD
 Sample : P4930-07
 Misc : 25mL/MSVOA_V/WATER
 ALS Vial : 40 Sample Multiplier: 1

Instrument :
 MSVOA_V
 ClientSampleId :
 BG445

Integration Parameters: rteint.p

Integrator: RTE
 Smoothing : ON
 Sampling : 1
 Start Thrs: 0.1
 Stop Thrs : 0

Filtering: 5
 Min Area: 3 % of largest Peak
 Max Peaks: 100
 Peak Location: TOP

If leading or trailing edge < 100 prefer < Baseline drop else tangent >
 Peak separation: 5

Method : Z:\voasrv\HPCHEM1\MSVOA_V\Method\SFAMVTR111924WMA.M
 Title : TRACE VOA SFAM1.0

Signal : TIC: VV038291.D\data.ms

peak #	R.T. min	first scan	max scan	last scan	PK TY	peak height	corr. area	corr. % max.	% of total
1	1.111	16	22	40	rVB	612068	633445	11.90%	3.057%
2	1.275	66	73	83	rBV2	112856	123764	2.33%	0.597%
3	1.529	145	152	165	rVB	99844	114898	2.16%	0.555%
4	1.889	243	264	304	rBV2	326917	1412929	26.55%	6.819%
5	2.063	306	318	357	rVB	3582915	5322631	100.00%	25.687%
6	2.252	363	377	408	rBV2	34354	111684	2.10%	0.539%
7	2.696	503	515	534	rBV2	50927	105611	1.98%	0.510%
8	3.104	627	642	666	rBV	491517	1049204	19.71%	5.064%
9	3.802	843	859	906	rBV2	595144	1648558	30.97%	7.956%
10	4.239	978	995	1028	rBV	142992	403907	7.59%	1.949%
11	4.500	1054	1076	1099	rBV2	456619	1193099	22.42%	5.758%
12	4.950	1201	1216	1246	rBV3	295853	790703	14.86%	3.816%
13	5.529	1386	1396	1435	rBV	259737	591729	11.12%	2.856%
14	5.821	1475	1487	1525	rBV	1173280	2376302	44.65%	11.468%
15	5.982	1526	1537	1565	rVB2	178225	388719	7.30%	1.876%
16	6.915	1817	1827	1861	rBV	67499	149543	2.81%	0.722%
17	7.239	1918	1928	1949	rBV	291989	555266	10.43%	2.680%
18	7.558	2017	2027	2050	rBV2	37868	85425	1.60%	0.412%
19	7.898	2113	2133	2161	rBV	344093	615118	11.56%	2.969%
20	8.021	2161	2171	2220	rBV	341625	769514	14.46%	3.714%
21	8.779	2394	2407	2436	rBV	446410	805536	15.13%	3.888%
22	10.146	2821	2832	2850	rBV	151631	257322	4.83%	1.242%
23	11.178	3143	3153	3178	rBV	385728	664324	12.48%	3.206%
24	11.554	3258	3270	3298	rBV	318831	551633	10.36%	2.662%

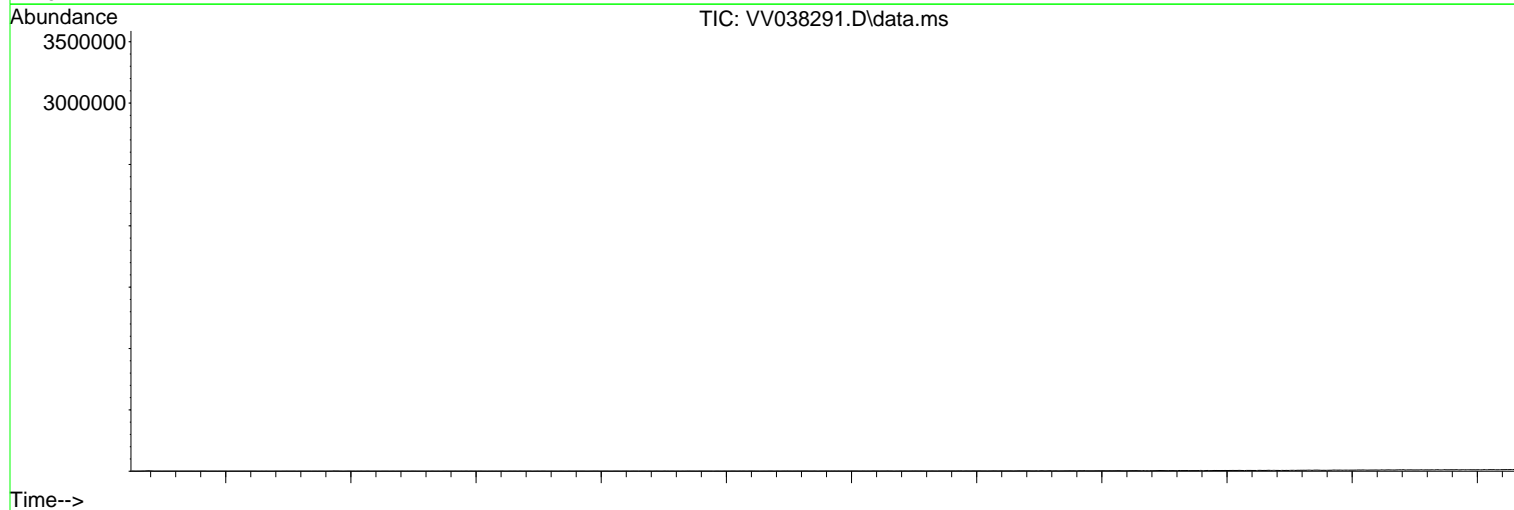
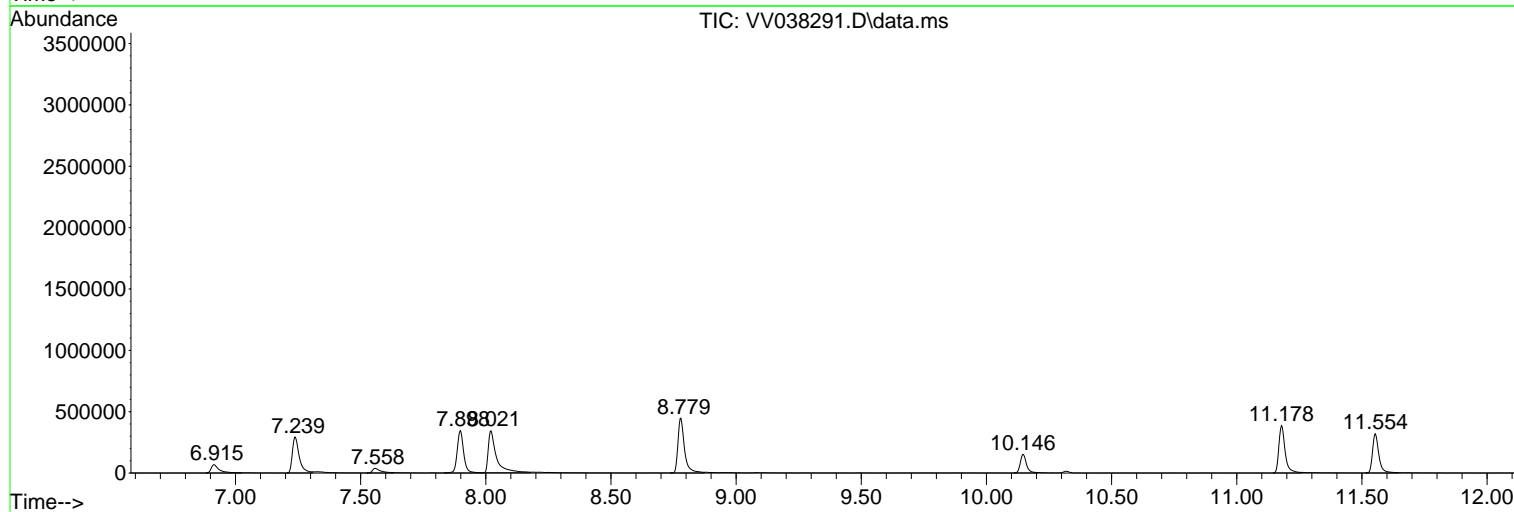
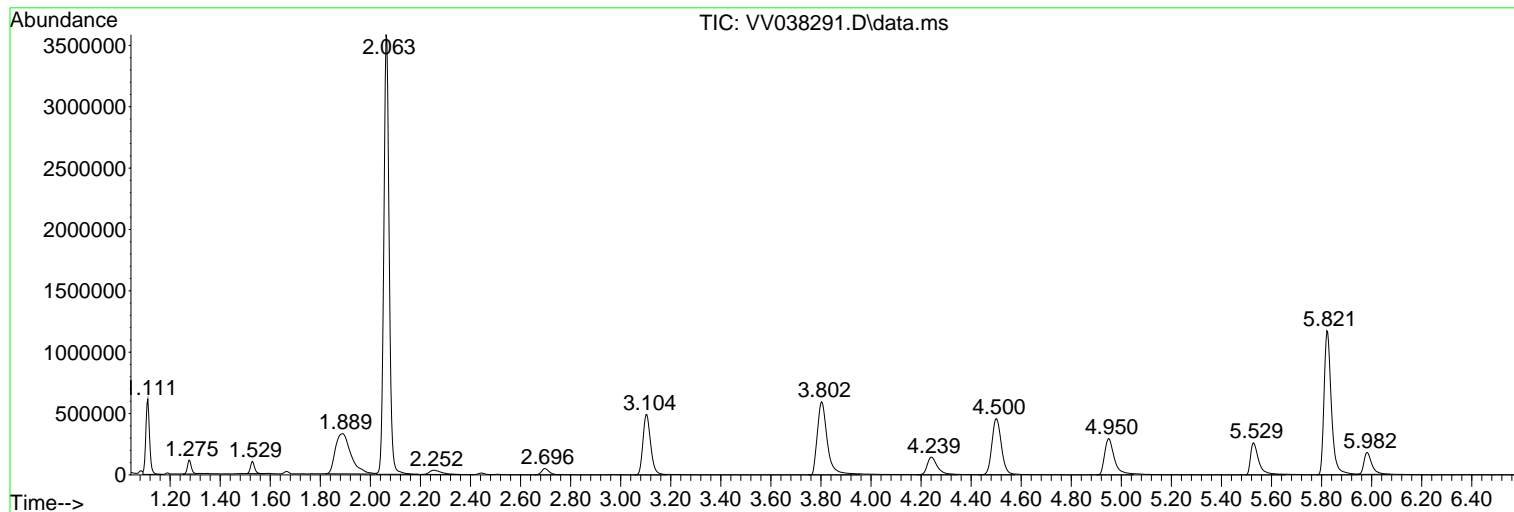
Sum of corrected areas: 20720864

Data Path : Z:\voasrv\HPCHEM1\MSVOA_V\DATA\VV112224\
Data File : VV038291.D
Acq On : 23 Nov 2024 00:44
Operator : SY/MD
Sample : P4930-07
Misc : 25mL/MSVOA_V/WATER
ALS Vial : 40 Sample Multiplier: 1

Instrument :
MSVOA_V
ClientSampleId :
BG445

Quant Method : Z:\voasrv\HPCHEM1\MSVOA_V\Method\SFAMVTR111924WMA.M
Quant Title : TRACE VOA SFAM1.0

TIC Library : C:\Database\NIST20.L
TIC Integration Parameters: LSCINT.P



Data Path : Z:\voasrv\HPCHEM1\MSVOA_V\DATA\VV112224\
Data File : VV038291.D
Acq On : 23 Nov 2024 00:44
Operator : SY/MD
Sample : P4930-07
Misc : 25mL/MSVOA_V/WATER
ALS Vial : 40 Sample Multiplier: 1

Instrument :
MSVOA_V
ClientSampleId :
BG445

Quant Method : Z:\voasrv\HPCHEM1\MSVOA_V\Method\SFAMVTR111924WMA.M
Quant Title : TRACE VOA SFAM1.0

TIC Library : C:\Database\NIST20.L
TIC Integration Parameters: LSCINT.P

No Library Search Compounds Detected

Data Path : Z:\voasrv\HPCHEM1\MSVOA_V\DATA\VV112224\
Data File : VV038291.D
Acq On : 23 Nov 2024 00:44
Operator : SY/MD
Sample : P4930-07
Misc : 25mL/MSVOA_V/WATER
ALS Vial : 40 Sample Multiplier: 1

Instrument :
MSVOA_V
ClientSampleId :
BG445

Quant Method : Z:\voasrv\HPCHEM1\MSVOA_V\Method\SFAMVTR111924WMA.M
Quant Title : TRACE VOA SFAM1.0

TIC Library : C:\Database\NIST20.L
TIC Integration Parameters: LSCINT.P

TIC Top Hit name	RT	EstConc	Units	Response	#	RT	Resp	Conc
------------------	----	---------	-------	----------	---	----	------	------

-----|