

Data Path : Z:\voasrv\HPCHEM1\MSVOA_V\DATA\VW112324\
 Data File : VV038305.D
 Acq On : 23 Nov 2024 18:00
 Operator : SY/MD
 Sample : P4884-14DL 2X
 Misc : 25mL/MSVOA_V/WATER
 ALS Vial : 11 Sample Multiplier: 1

Instrument :
 MSVOA_V
 ClientSampleId :

Quant Time: Nov 23 23:01:53 2024
 Quant Method : Z:\voasrv\HPCHEM1\MSVOA_V\Method\SFAMVTR111924WMA.M
 Quant Title : TRACE VOA SFAM1.0
 QLast Update : Sat Nov 23 02:01:29 2024
 Response via : Initial Calibration

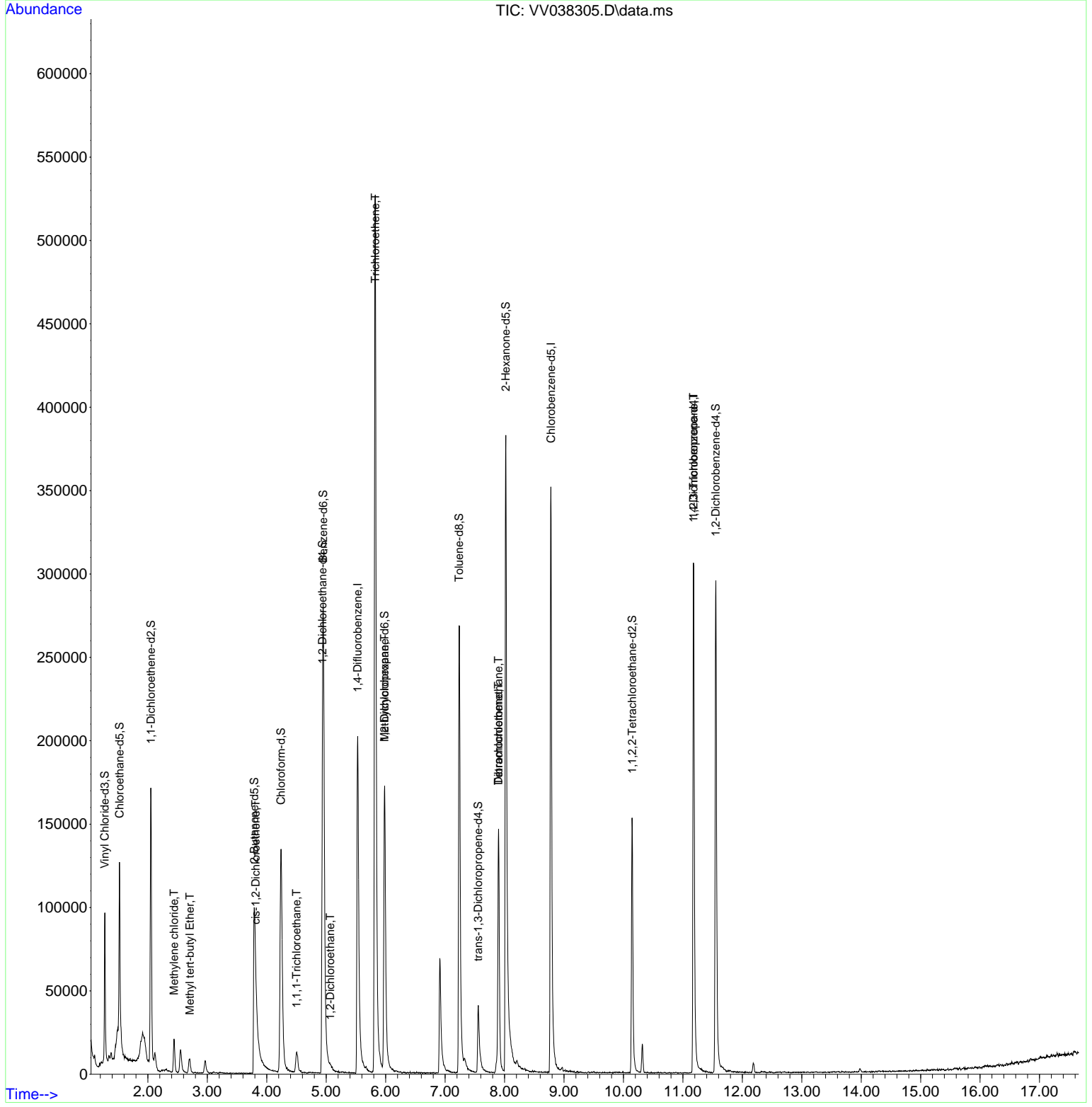
Compound	R.T.	QIon	Response	Conc	Units	Dev(Min)
Internal Standards						
1) 1,4-Difluorobenzene	5.529	114	195680	5.000	ug/L	0.00
28) Chlorobenzene-d5	8.780	117	213423	5.000	ug/L	0.00
58) 1,4-Dichlorobenzene-d4	11.181	152	88554	5.000	ug/L	0.00
System Monitoring Compounds						
4) Vinyl Chloride-d3	1.275	65	56873	3.792	ug/L	0.00
Spiked Amount	5.000	Range 40 - 130	Recovery	=	75.800%	
7) Chloroethane-d5	1.523	69	60010	4.946	ug/L	0.00
Spiked Amount	5.000	Range 65 - 130	Recovery	=	99.000%	
11) 1,1-Dichloroethene-d2	2.050	65	28174	4.365	ug/L	0.00
Spiked Amount	5.000	Range 60 - 125	Recovery	=	87.400%	
20) 2-Butanone-d5	3.789	46	182055	60.677	ug/L	0.00
Spiked Amount	50.000	Range 40 - 130	Recovery	=	121.360%	
24) Chloroform-d	4.240	84	154650	5.313	ug/L	0.00
Spiked Amount	5.000	Range 70 - 125	Recovery	=	106.200%	
26) 1,2-Dichloroethane-d4	4.937	65	78332	5.997	ug/L	0.00
Spiked Amount	5.000	Range 70 - 130	Recovery	=	120.000%	
32) Benzene-d6	4.950	84	265546	4.814	ug/L	0.00
Spiked Amount	5.000	Range 70 - 125	Recovery	=	96.200%	
36) 1,2-Dichloropropane-d6	5.982	67	91344	5.382	ug/L	0.00
Spiked Amount	5.000	Range 60 - 140	Recovery	=	107.600%	
41) Toluene-d8	7.236	98	203934	3.996	ug/L	0.00
Spiked Amount	5.000	Range 70 - 130	Recovery	=	80.000%	
43) trans-1,3-Dichloroprop...	7.558	79	32009	5.072	ug/L	0.00
Spiked Amount	5.000	Range 55 - 130	Recovery	=	101.400%	
46) 2-Hexanone-d5	8.021	63	146084	59.552	ug/L	0.00
Spiked Amount	50.000	Range 45 - 130	Recovery	=	119.100%	
56) 1,1,2,2-Tetrachloroeth...	10.146	84	79880	5.544	ug/L	0.00
Spiked Amount	5.000	Range 65 - 120	Recovery	=	110.800%	
66) 1,2-Dichlorobenzene-d4	11.554	152	86211	5.714	ug/L	0.00
Spiked Amount	5.000	Range 80 - 120	Recovery	=	114.200%	
Target Compounds						
16) Methylene chloride	2.439	84	9104	0.571	ug/L	90
17) Methyl tert-butyl Ether	2.706	73	7871	0.249	ug/L #	89
22) cis-1,2-Dichloroethene	3.815	96	3990	0.262	ug/L	88
27) 1,2-Dichloroethane	5.066	62	1918	0.123	ug/L #	72
29) 1,1,1-Trichloroethane	4.503	97	11312	0.442	ug/L	93
34) Trichloroethene	5.825	95	201925	12.356	ug/L	97
35) Methylcyclohexane	5.982	83	22314	0.965	ug/L #	20
47) Tetrachloroethene	7.899	164	34834	2.653	ug/L	96
49) Dibromochloromethane	7.899	129	30898	2.327	ug/L #	11
61) 1,2,3-Trichloropropane	11.178	75	10059	1.327	ug/L #	65

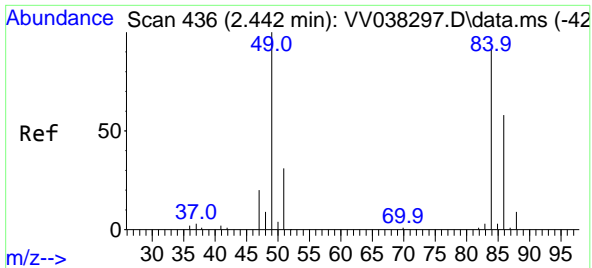
(#) = qualifier out of range (m) = manual integration (+) = signals summed

Data Path : Z:\voasrv\HPCHEM1\MSVOA_V\DATA\VV112324\
 Data File : VV038305.D
 Acq On : 23 Nov 2024 18:00
 Operator : SY/MD
 Sample : P4884-14DL 2X
 Misc : 25mL/MSVOA_V/WATER
 ALS Vial : 11 Sample Multiplier: 1

Instrument :
 MSVOA_V
 ClientSampleId :

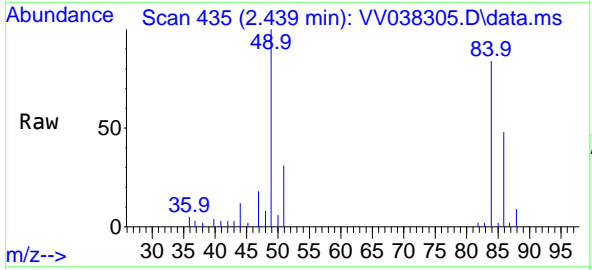
Quant Time: Nov 23 23:01:53 2024
 Quant Method : Z:\voasrv\HPCHEM1\MSVOA_V\Method\SFAMVTR111924WMA.M
 Quant Title : TRACE VOA SFAM1.0
 QLast Update : Sat Nov 23 02:01:29 2024
 Response via : Initial Calibration





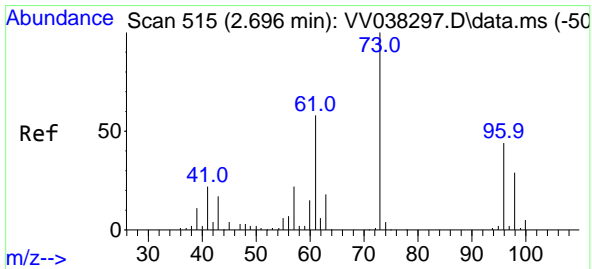
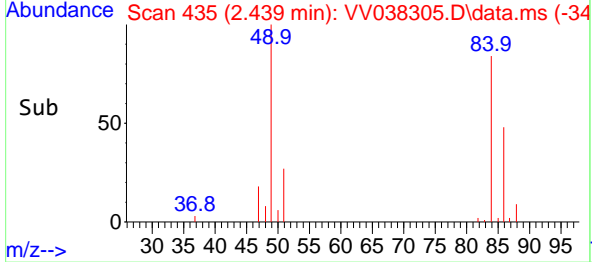
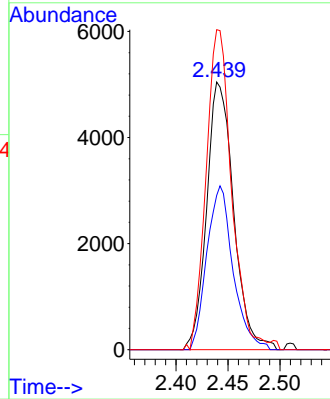
#16
 Methylene chloride
 Concen: 0.571 ug/L
 RT: 2.439 min Scan# 41
 Delta R.T. 0.000 min
 Lab File: VV038305.D
 Acq: 23 Nov 2024 18:00

Instrument :
 MSVOA_V
 ClientSampleId :



Tgt Ion: 84 Resp: 9104

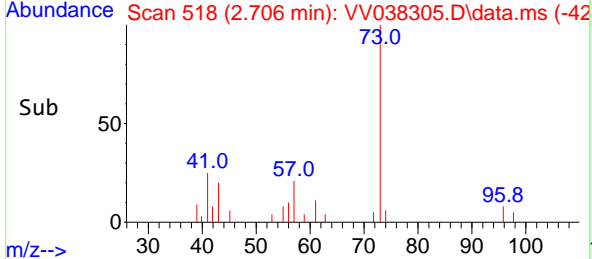
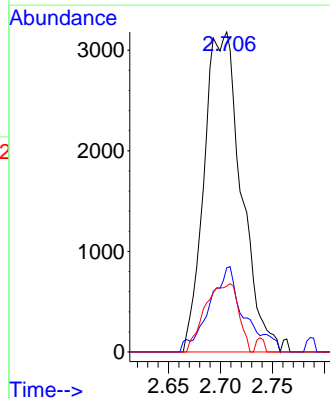
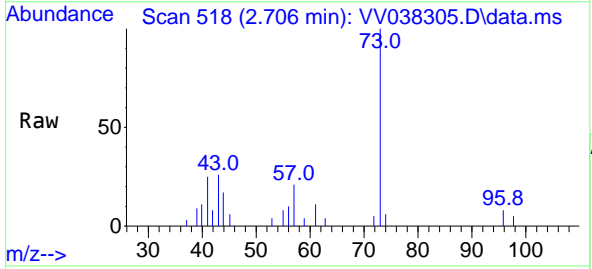
Ion	Ratio	Lower	Upper
84	100		
86	57.6	44.2	82.2
49	119.5	74.9	139.1

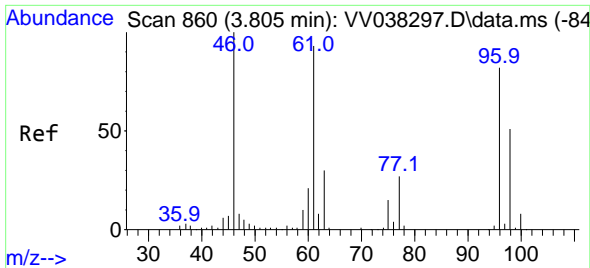


#17
 Methyl tert-butyl Ether
 Concen: 0.249 ug/L
 RT: 2.706 min Scan# 518
 Delta R.T. 0.010 min
 Lab File: VV038305.D
 Acq: 23 Nov 2024 18:00

Tgt Ion: 73 Resp: 7871

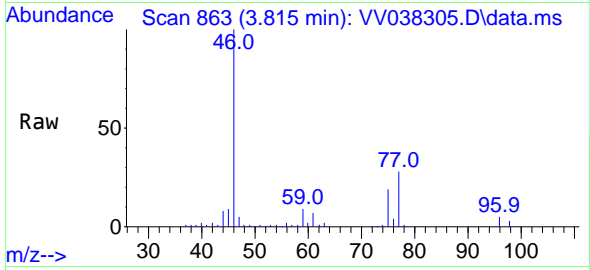
Ion	Ratio	Lower	Upper
73	100		
43	25.1	14.2	21.2#
57	19.4	17.6	26.4



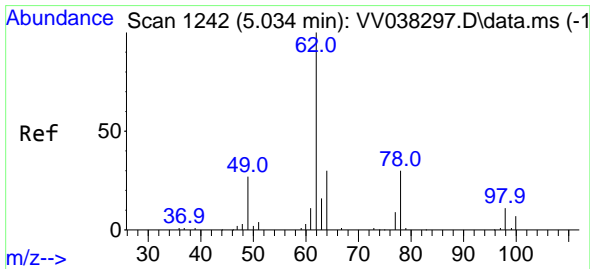
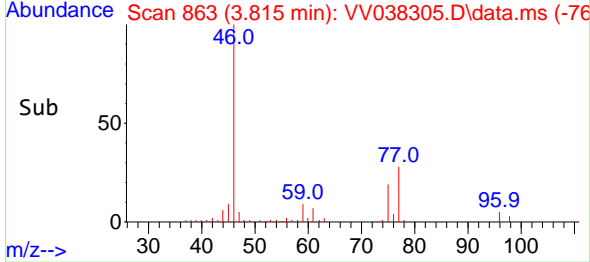
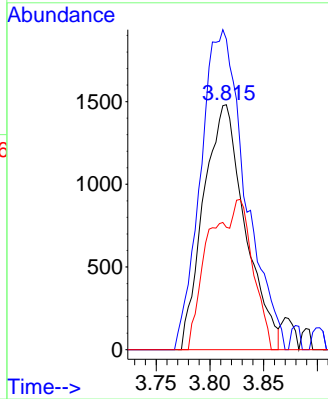


#22
 cis-1,2-Dichloroethene
 Concen: 0.262 ug/L
 RT: 3.815 min Scan# 80
 Delta R.T. 0.010 min
 Lab File: VV038305.D
 Acq: 23 Nov 2024 18:00

Instrument :
 MSVOA_V
 ClientSampleId :

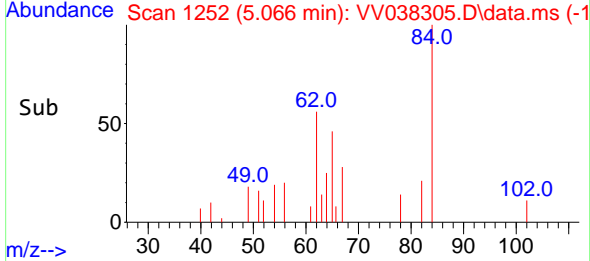
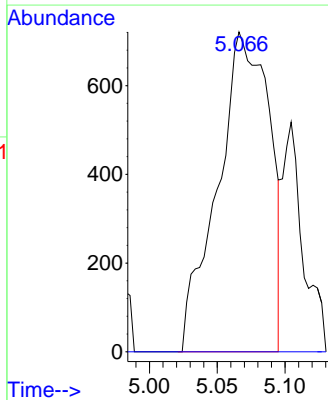
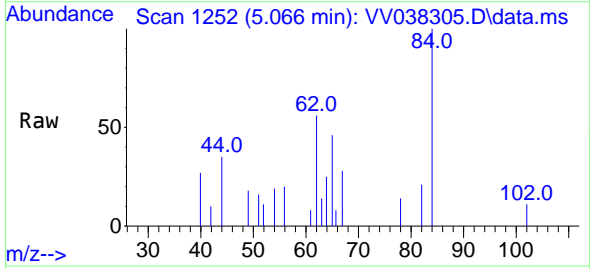


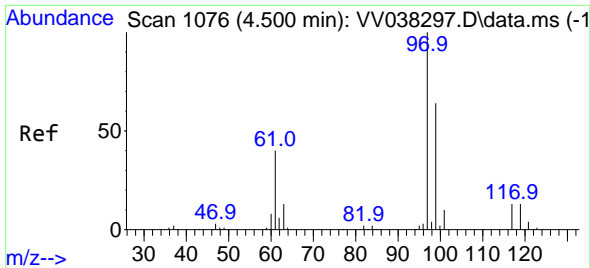
Tgt Ion: 96 Resp: 3990
 Ion Ratio Lower Upper
 96 100
 61 126.8 82.7 153.5
 98 50.0 46.3 85.9



#27
 1,2-Dichloroethane
 Concen: 0.123 ug/L
 RT: 5.066 min Scan# 1252
 Delta R.T. 0.029 min
 Lab File: VV038305.D
 Acq: 23 Nov 2024 18:00

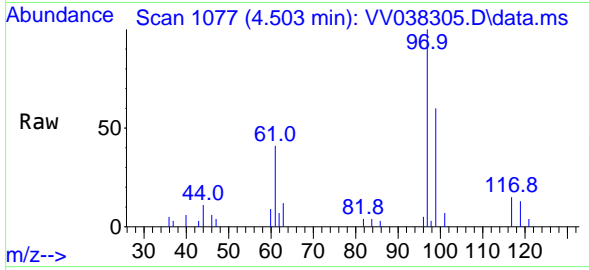
Tgt Ion: 62 Resp: 1918
 Ion Ratio Lower Upper
 62 100
 98 0.0 8.2 12.4#



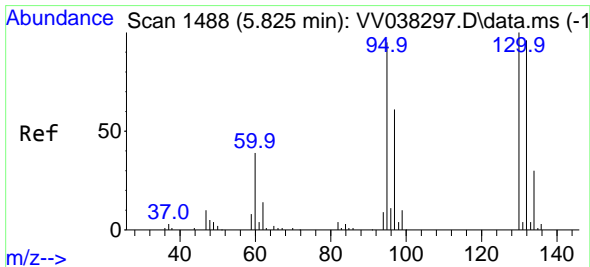
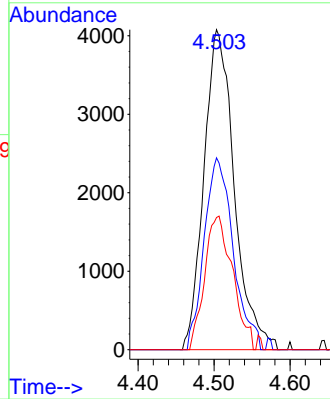
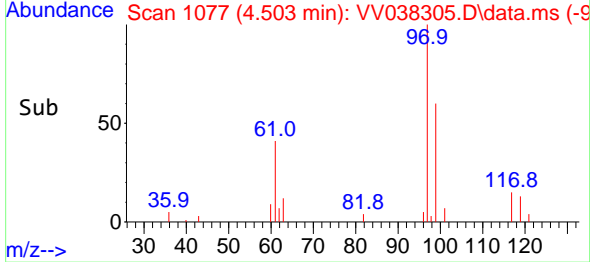


#29
 1,1,1-Trichloroethane
 Concen: 0.442 ug/L
 RT: 4.503 min Scan# 1077
 Delta R.T. 0.000 min
 Lab File: VV038305.D
 Acq: 23 Nov 2024 18:00

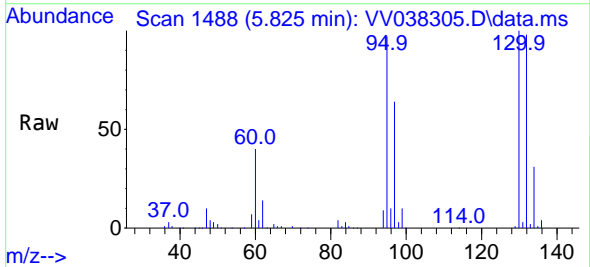
Instrument : MSVOA_V
 ClientSampleId :



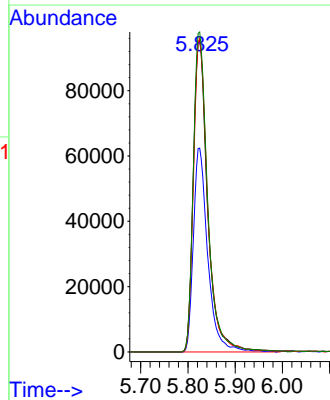
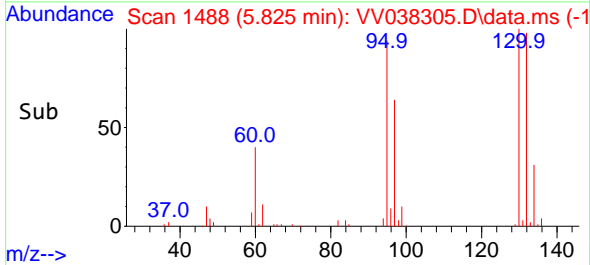
Tgt Ion: 97 Resp: 11312
 Ion Ratio Lower Upper
 97 100
 99 57.3 51.8 77.8
 61 38.5 32.2 48.2

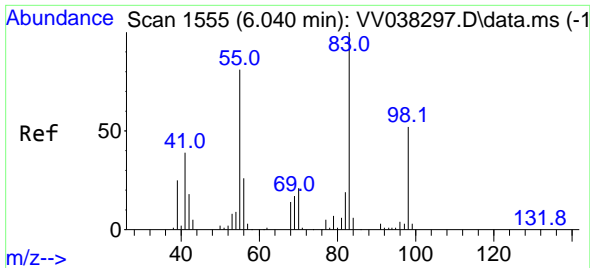


#34
 Trichloroethene
 Concen: 12.356 ug/L
 RT: 5.825 min Scan# 1488
 Delta R.T. -0.003 min
 Lab File: VV038305.D
 Acq: 23 Nov 2024 18:00



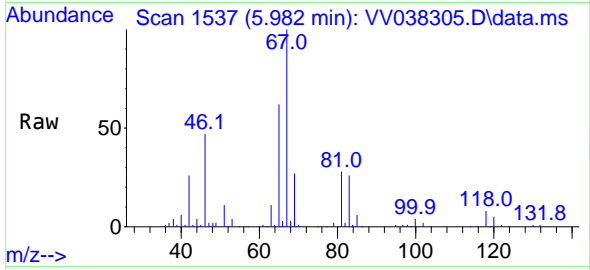
Tgt Ion: 95 Resp: 201925
 Ion Ratio Lower Upper
 95 100
 97 65.5 44.8 83.2
 132 100.7 68.3 126.8
 130 102.8 70.2 130.4



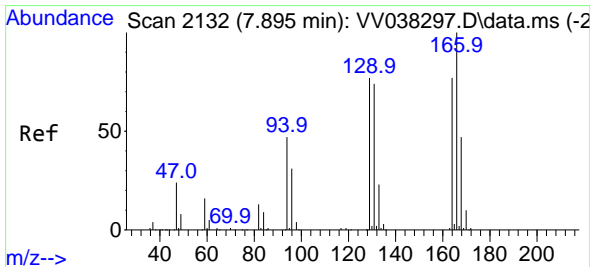
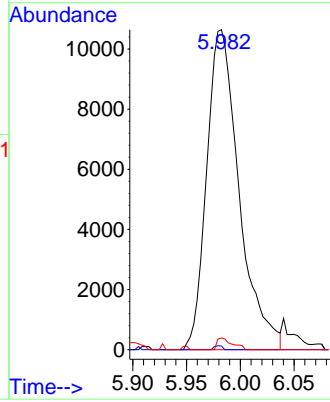
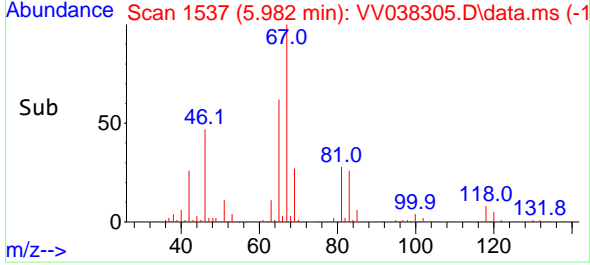


#35
 Methylcyclohexane
 Concen: 0.965 ug/L
 RT: 5.982 min Scan# 11
 Delta R.T. -0.058 min
 Lab File: VV038305.D
 Acq: 23 Nov 2024 18:00

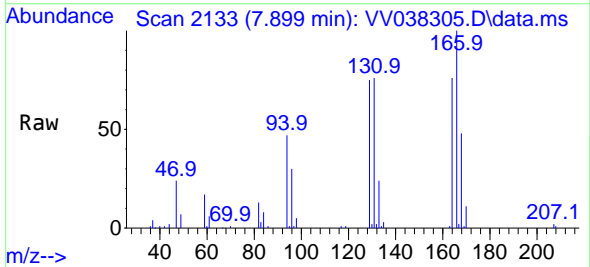
Instrument :
 MSVOA_V
 ClientSampleId :



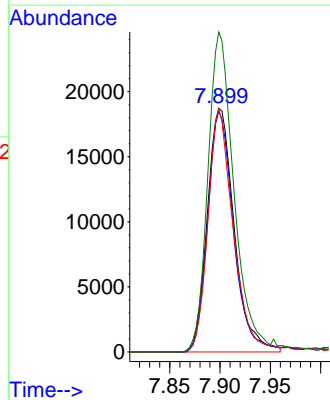
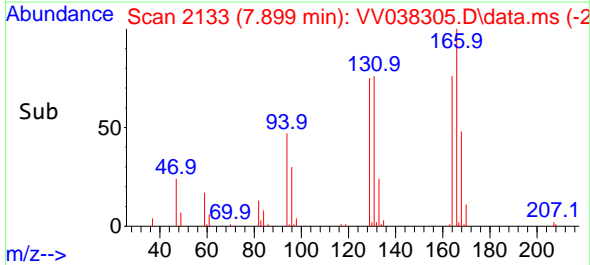
Tgt Ion: 83 Resp: 22314
 Ion Ratio Lower Upper
 83 100
 55 0.3 59.7 89.5#
 98 1.7 39.0 58.4#

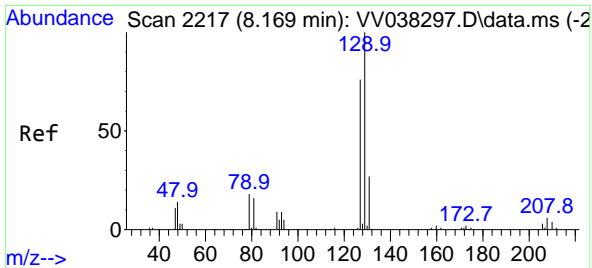


#47
 Tetrachloroethene
 Concen: 2.653 ug/L
 RT: 7.899 min Scan# 2133
 Delta R.T. 0.003 min
 Lab File: VV038305.D
 Acq: 23 Nov 2024 18:00



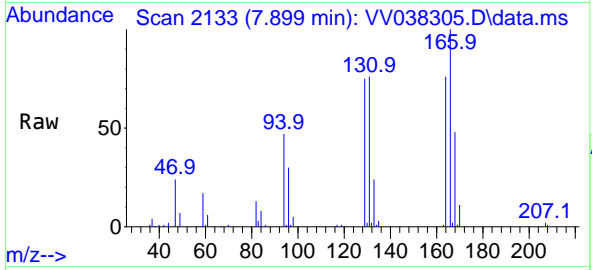
Tgt Ion: 164 Resp: 34834
 Ion Ratio Lower Upper
 164 100
 129 98.8 68.5 127.1
 131 99.7 64.8 120.4
 166 131.4 88.3 163.9



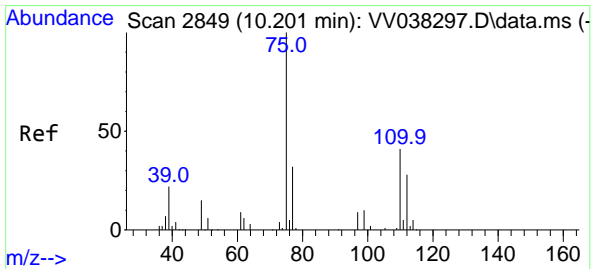
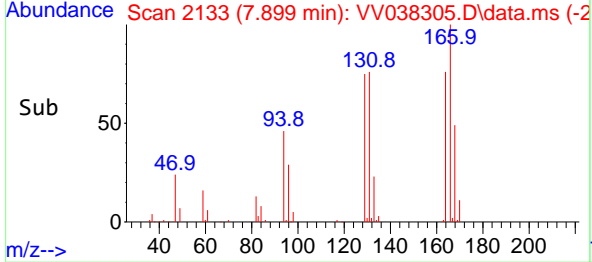
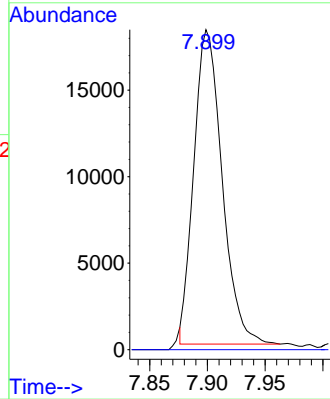


#49
 Dibromochloromethane
 Concen: 2.327 ug/L
 RT: 7.899 min Scan# 2133
 Delta R.T. -0.270 min
 Lab File: VV038305.D
 Acq: 23 Nov 2024 18:00

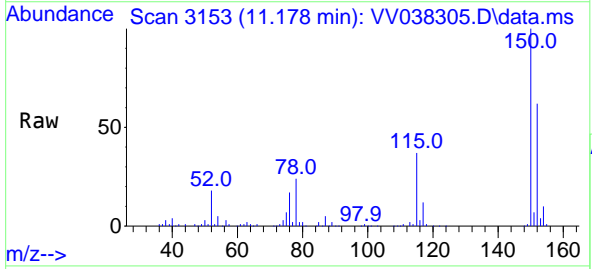
Instrument : MSVOA_V
 ClientSampleId :



Tgt Ion:129 Resp: 30898
 Ion Ratio Lower Upper
 129 100
 127 0.0 53.5 99.3#



#61
 1,2,3-Trichloropropane
 Concen: 1.327 ug/L
 RT: 11.178 min Scan# 3153
 Delta R.T. 0.974 min
 Lab File: VV038305.D
 Acq: 23 Nov 2024 18:00



Tgt Ion: 75 Resp: 10059
 Ion Ratio Lower Upper
 75 100
 77 33.3 26.4 39.6
 110 1.4 32.3 48.5#

