

Data Path : Z:\VOASRV\HPCHEM1\MSVOA W\DATA\VW010419\
 Data File : VW008049.D
 Acq On : 04 Jan 2019 15:56
 Operator : SY/AP
 Sample : K1044-05
 Misc : 5.09G/5ML/MSVOA W/SOIL
 ALS Vial : 12 Sample Multiplier: 1

Instrument :
 MSVOA_W
 ClientSampleId :
 CPSB-10(10-15)

Integration Parameters: RTEINT.P

Integrator: RTE
 Smoothing : ON
 Sampling : 1
 Start Thrs: 0.2
 Stop Thrs : 0

Filtering: 5
 Min Area: 3 % of largest Peak
 Max Peaks: 100
 Peak Location: TOP

If leading or trailing edge < 100 prefer < Baseline drop else tangent >
 Peak separation: 5

Method : Z:\VOASRV\HPCHEM1\MSVOA_W\METHOD\82W010219S.M
 Title : SW846 8260

Signal : TIC

peak #	R.T. min	first scan	max scan	last scan	PK TY	peak height	corr. area	corr. % max.	% of total
1	6.879	804	816	825	rBV3	20968	68780	2.31%	0.122%
2	6.982	825	833	844	rVB2	15432	46575	1.57%	0.083%
3	7.696	942	950	960	rVB2	37406	88064	2.96%	0.156%
4	7.885	967	981	986	rBV	50780	132573	4.46%	0.235%
5	7.946	986	991	998	rVV	104260	249038	8.37%	0.441%
6	8.031	998	1005	1018	rVB	153162	408323	13.73%	0.723%
7	8.159	1018	1026	1033	rBV	91608	199713	6.72%	0.354%
8	8.305	1043	1050	1060	rVB	50493	112213	3.77%	0.199%
9	8.482	1060	1079	1091	rBV	398790	1315583	44.24%	2.331%
10	8.573	1091	1094	1105	rVB2	37573	82952	2.79%	0.147%
11	8.842	1128	1138	1150	rBV	155303	332263	11.17%	0.589%
12	9.073	1169	1176	1181	rBV	47539	105874	3.56%	0.188%
13	9.336	1203	1219	1223	rBV	426244	1051068	35.35%	1.862%
14	9.384	1223	1227	1235	rVB	300572	608085	20.45%	1.077%
15	9.470	1235	1241	1245	rBV	68750	139462	4.69%	0.247%
16	9.518	1245	1249	1254	rVB3	60334	108734	3.66%	0.193%
17	9.610	1254	1264	1271	rVB4	73267	215441	7.24%	0.382%
18	9.683	1271	1276	1281	rBV3	14495	30760	1.03%	0.054%
19	9.762	1281	1289	1299	rBV	826901	1813165	60.97%	3.212%
20	9.896	1299	1311	1319	rBV2	1239956	2973738	100.00%	5.268%
21	9.994	1324	1327	1334	rVB2	108330	185186	6.23%	0.328%
22	10.085	1334	1342	1346	rBV2	214936	531763	17.88%	0.942%
23	10.128	1346	1349	1356	rVV	193531	346420	11.65%	0.614%
24	10.207	1356	1362	1364	rVV	118234	200409	6.74%	0.355%
25	10.256	1364	1370	1376	rVV	549588	1137402	38.25%	2.015%
26	10.323	1376	1381	1393	rVB2	360082	803819	27.03%	1.424%
27	10.445	1393	1401	1404	rBV3	75821	151677	5.10%	0.269%
28	10.506	1404	1411	1418	rVB7	125229	383561	12.90%	0.679%
29	10.616	1423	1429	1433	rBV5	31020	63354	2.13%	0.112%
30	10.671	1433	1438	1446	rVB2	79590	156271	5.26%	0.277%
31	10.774	1446	1455	1463	rBV5	259032	673705	22.66%	1.193%
32	10.847	1463	1467	1473	rVB	229680	375979	12.64%	0.666%
33	10.939	1473	1482	1488	rBV2	287824	544012	18.29%	0.964%
34	11.043	1488	1499	1507	rBV	439104	1081334	36.36%	1.916%

Data Path : Z:\VOASRV\HPCHEM1\MSVOA W\DATA\VW010419\
 Data File : VW008049.D
 Acq On : 04 Jan 2019 15:56
 Operator : SY/AP
 Sample : K1044-05
 Misc : 5.09G/5ML/MSVOA W/SOIL
 ALS Vial : 12 Sample Multiplier: 1

Instrument :
 MSVOA_W
 ClientSampleId :
 CPSB-10(10-15)

Integration Parameters: RTEINT.P

Integrator: RTE
 Smoothing : ON
 Sampling : 1
 Start Thrs: 0.2
 Stop Thrs : 0

Filtering: 5
 Min Area: 3 % of largest Peak
 Max Peaks: 100
 Peak Location: TOP

If leading or trailing edge < 100 prefer < Baseline drop else tangent >
 Peak separation: 5

Method : Z:\VOASRV\HPCHEM1\MSVOA_W\METHOD\82W010219S.M
 Title : SW846 8260

35	11.110	1507	1510	1514	rBV2	86175	138841	4.67%	0.246%
36	11.146	1514	1516	1518	rVV3	31003	34557	1.16%	0.061%
37	11.183	1518	1522	1525	rVB	103132	142398	4.79%	0.252%
38	11.238	1525	1531	1536	rVB	234814	419089	14.09%	0.742%
39	11.286	1536	1539	1543	rVB3	56546	81659	2.75%	0.145%
40	11.341	1543	1548	1552	rBV2	252030	408066	13.72%	0.723%
41	11.384	1552	1555	1562	rVV3	231052	650978	21.89%	1.153%
42	11.439	1562	1564	1571	rVB2	199582	300661	10.11%	0.533%
43	11.512	1571	1576	1581	rBV2	378071	688503	23.15%	1.220%
44	11.610	1587	1592	1594	rBV	252300	415629	13.98%	0.736%
45	11.701	1600	1607	1614	rVB	351214	604884	20.34%	1.072%
46	11.768	1614	1618	1621	rBV2	99003	136589	4.59%	0.242%
47	11.817	1621	1626	1631	rVB6	135843	251303	8.45%	0.445%
48	11.878	1631	1636	1640	rBV2	519443	853668	28.71%	1.512%
49	11.920	1640	1643	1648	rVB2	207030	330400	11.11%	0.585%
50	11.981	1648	1653	1655	rBV2	62401	108990	3.67%	0.193%
51	12.073	1655	1668	1672	rBV3	277455	615831	20.71%	1.091%
52	12.140	1672	1679	1685	rBV3	474874	1028218	34.58%	1.822%
53	12.256	1691	1698	1703	rVB	663928	1128500	37.95%	1.999%
54	12.341	1703	1712	1713	rBV4	443475	874551	29.41%	1.549%
55	12.372	1714	1717	1724	rVB3	449533	980943	32.99%	1.738%
56	12.469	1728	1733	1737	rBV2	412074	847254	28.49%	1.501%
57	12.548	1742	1746	1750	rVB2	434195	666994	22.43%	1.182%
58	12.597	1750	1754	1763	rVB	647930	1238448	41.65%	2.194%
59	12.707	1765	1772	1776	rBV6	245046	568056	19.10%	1.006%
60	12.786	1776	1785	1791	rVB7	566210	1603209	53.91%	2.840%
61	12.865	1791	1798	1802	rBV3	310042	724937	24.38%	1.284%
62	12.945	1802	1811	1817	rBV7	656226	2023084	68.03%	3.584%
63	12.999	1817	1820	1825	rVB3	379007	568844	19.13%	1.008%
64	13.048	1825	1828	1830	rBV4	73194	97657	3.28%	0.173%
65	13.085	1830	1834	1838	rBV5	338453	603276	20.29%	1.069%
66	13.134	1838	1842	1844	rVV2	211286	355314	11.95%	0.629%
67	13.170	1844	1848	1856	rVB3	992693	1671526	56.21%	2.961%
68	13.268	1862	1864	1866	rBV3	67631	80390	2.70%	0.142%
69	13.298	1866	1869	1874	rVV2	360283	550356	18.51%	0.975%
70	13.353	1874	1878	1880	rVV3	337401	534450	17.97%	0.947%
71	13.384	1881	1883	1886	rVV2	378528	527871	17.75%	0.935%

Data Path : Z:\VOASRV\HPCHEM1\MSVOA W\DATA\VW010419\
 Data File : VW008049.D
 Acq On : 04 Jan 2019 15:56
 Operator : SY/AP
 Sample : K1044-05
 Misc : 5.09G/5ML/MSVOA W/SOIL
 ALS Vial : 12 Sample Multiplier: 1

Instrument :
 MSVOA_W
 ClientSampleId :
 CPSB-10(10-15)

Integration Parameters: RTEINT.P

Integrator: RTE
 Smoothing : ON Filtering: 5
 Sampling : 1 Min Area: 3 % of largest Peak
 Start Thrs: 0.2 Max Peaks: 100
 Stop Thrs : 0 Peak Location: TOP

If leading or trailing edge < 100 prefer < Baseline drop else tangent >
 Peak separation: 5

Method : Z:\VOASRV\HPCHEM1\MSVOA_W\METHOD\82W010219S.M
 Title : SW846 8260

72	13.451	1887	1894	1898	rVV5	709307	1701743	57.23%	3.015%
73	13.493	1898	1901	1905	rVB2	441300	587981	19.77%	1.042%
74	13.603	1916	1919	1926	rVB4	194933	400105	13.45%	0.709%
75	13.725	1931	1939	1945	rBV2	488753	1107090	37.23%	1.961%
76	13.829	1950	1956	1960	rBV2	221468	453268	15.24%	0.803%
77	13.883	1960	1965	1969	rBV4	938043	1615347	54.32%	2.862%
78	13.926	1969	1972	1977	rVB4	205786	285728	9.61%	0.506%
79	13.987	1979	1982	1985	rBV3	185654	237129	7.97%	0.420%
80	14.103	1997	2001	2005	rVB	882003	1237349	41.61%	2.192%
81	14.213	2013	2019	2024	rBV5	481995	900202	30.27%	1.595%
82	14.274	2024	2029	2035	rVB7	248329	470270	15.81%	0.833%
83	14.329	2035	2038	2039	rBV3	99128	114344	3.85%	0.203%
84	14.396	2044	2049	2052	rVV3	795913	1563682	52.58%	2.770%
85	14.426	2052	2054	2063	rVB2	561438	828504	27.86%	1.468%
86	14.505	2063	2067	2071	rBV4	254764	455858	15.33%	0.808%
87	14.560	2071	2076	2081	rVB5	340103	594860	20.00%	1.054%
88	14.743	2103	2106	2109	rBV3	114364	136649	4.60%	0.242%
89	14.804	2111	2116	2121	rVV4	582101	1273511	42.83%	2.256%
90	14.853	2121	2124	2131	rVB5	471020	1022087	34.37%	1.811%
91	15.072	2157	2160	2164	rVB2	215719	312070	10.49%	0.553%
92	15.182	2173	2178	2184	rBV5	175317	370804	12.47%	0.657%
93	15.334	2199	2203	2211	rVB5	336120	597607	20.10%	1.059%
94	15.743	2266	2270	2276	rVB6	127282	222987	7.50%	0.395%
95	16.182	2338	2342	2347	rVB6	65621	119125	4.01%	0.211%
96	16.304	2358	2362	2368	rVB5	75730	142039	4.78%	0.252%
97	16.383	2371	2375	2382	rVB6	60221	125284	4.21%	0.222%

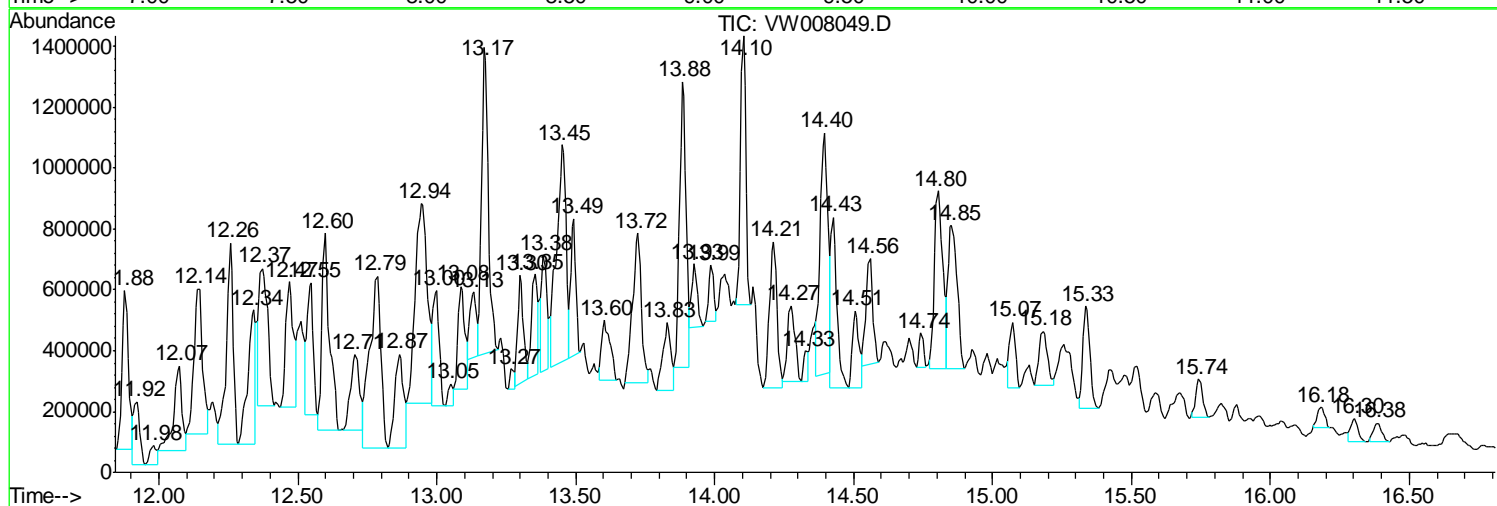
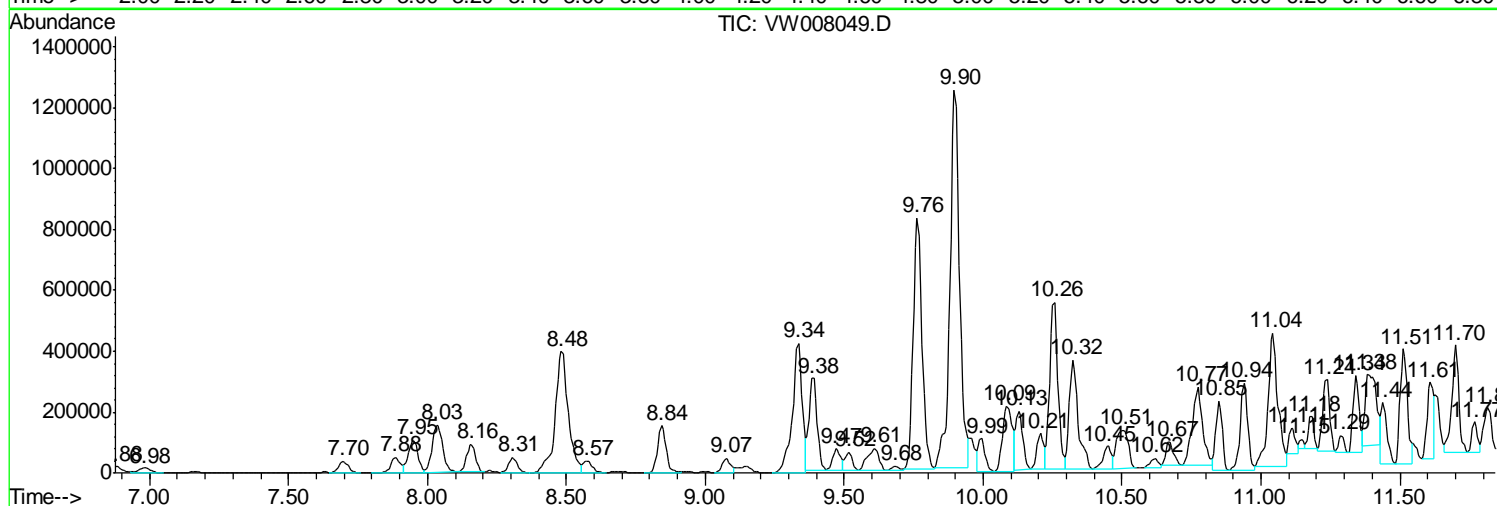
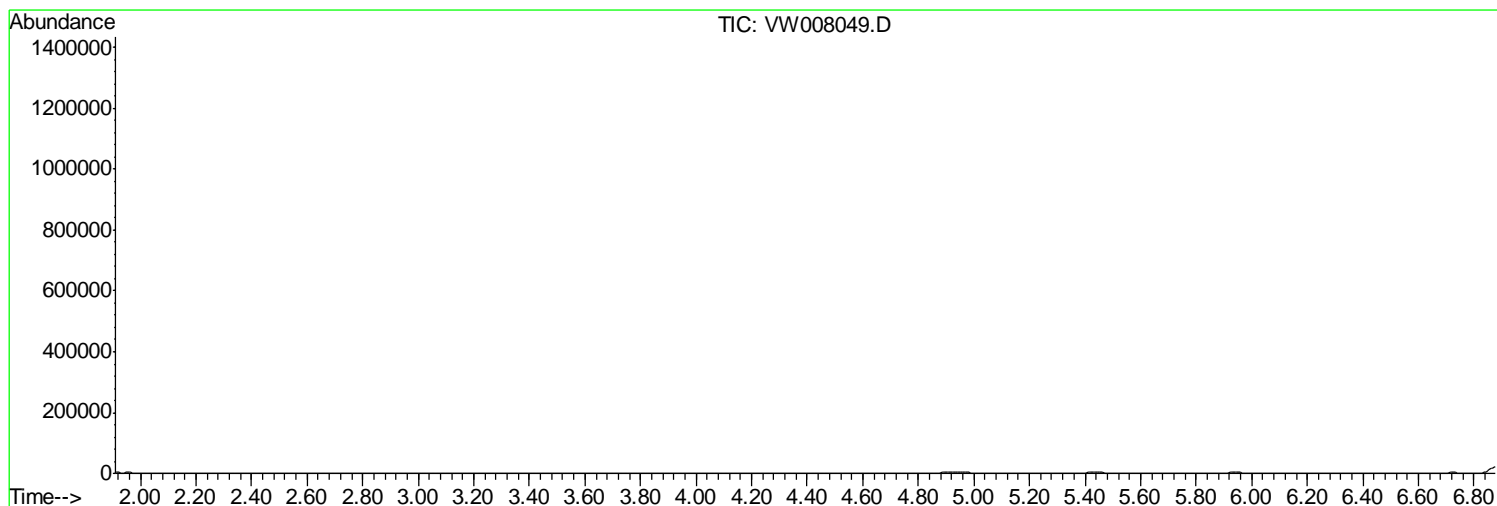
Sum of corrected areas: 56448843

Data Path : Z:\VOASRV\HPCHEM1\MSVOA W\DATA\VW010419\
 Data File : VW008049.D
 Acq On : 04 Jan 2019 15:56
 Operator : SY/AP
 Sample : K1044-05
 Misc : 5.09G/5ML/MSVOA W/SOIL
 ALS Vial : 12 Sample Multiplier: 1

Instrument :
 MSVOA_W
ClientSampled :
 CPSB-10(10-15)

Quant Method : Z:\VOASRV\HPCHEM1\MSVOA_W\METHOD\82W010219S.M
 Quant Title : SW846 8260

TIC Library : C:\DATABASE\NIST11.L
 TIC Integration Parameters: LSCINT.P



Data Path : Z:\VOASRV\HPCHEM1\MSVOA W\DATA\VW010419\
 Data File : VW008049.D
 Acq On : 04 Jan 2019 15:56
 Operator : SY/AP
 Sample : K1044-05
 Misc : 5.09G/5ML/MSVOA W/SOIL
 ALS Vial : 12 Sample Multiplier: 1

Instrument :
 MSVOA_W
 ClientSampled :
 CPSB-10(10-15)

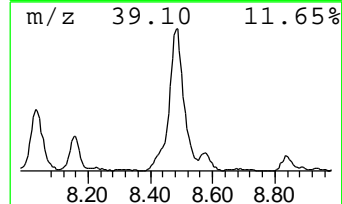
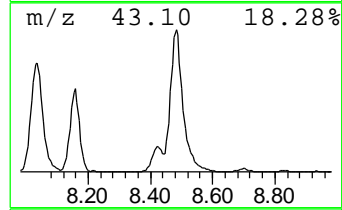
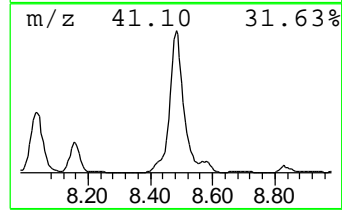
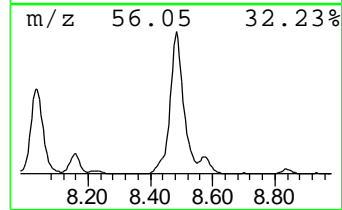
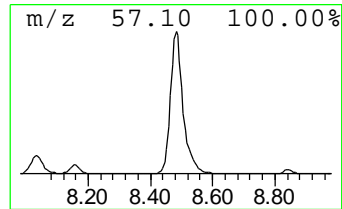
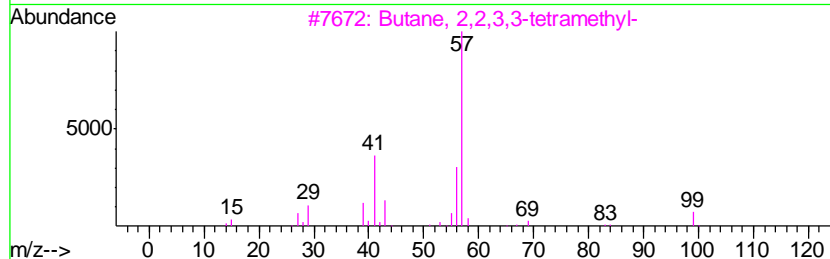
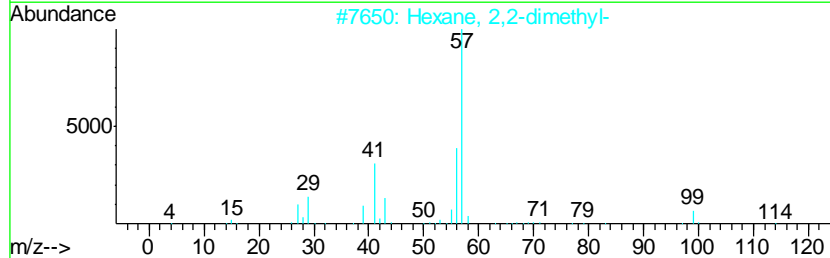
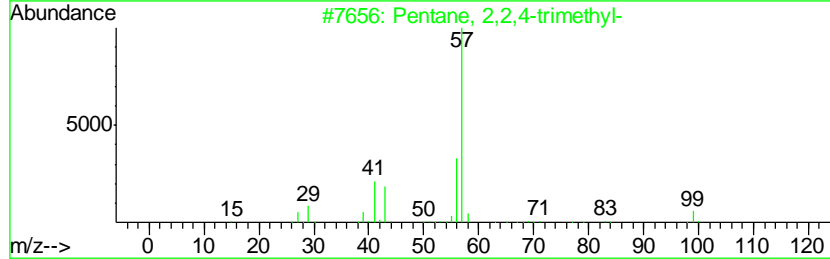
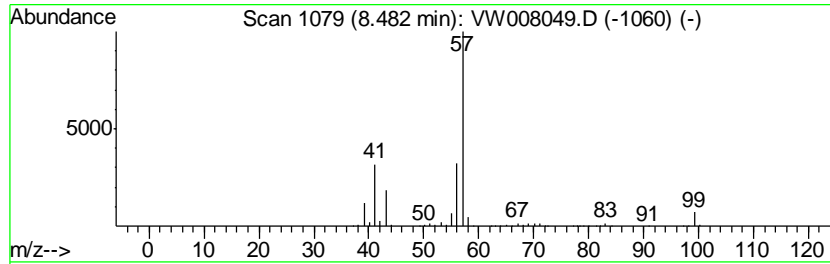
Quant Method : Z:\VOASRV\HPCHEM1\MSVOA_W\METHOD\82W010219S.M
 Quant Title : SW846 8260

TIC Library : C:\DATABASE\NIST11.L
 TIC Integration Parameters: LSCINT.P

 Peak Number 1 Pentane, 2,2,4-trimethyl- Concentration Rank 8

R.T.	EstConc	Area	Relative to ISTD	R.T.
8.48	197.97 ug/l	1315580	1,4-Difluorobenzene	8.84

Hit#	of	Tentative ID	MW	MolForm	CAS#	Qual
1	5	Pentane, 2,2,4-trimethyl-	114	C8H18	000540-84-1	78
2		Hexane, 2,2-dimethyl-	114	C8H18	000590-73-8	72
3		Butane, 2,2,3,3-tetramethyl-	114	C8H18	000594-82-1	72
4		Hexane, 2,2,4-trimethyl-	128	C9H20	016747-26-5	59
5		Pentane, 2,2,4,4-tetramethyl-	128	C9H20	001070-87-7	59



Data Path : Z:\VOASRV\HPCHEM1\MSVOA W\DATA\VW010419\
 Data File : VW008049.D
 Acq On : 04 Jan 2019 15:56
 Operator : SY/AP
 Sample : K1044-05
 Misc : 5.09G/5ML/MSVOA W/SOIL
 ALS Vial : 12 Sample Multiplier: 1

Instrument :
 MSVOA_W
 ClientSampleID :
 CPSB-10(10-15)

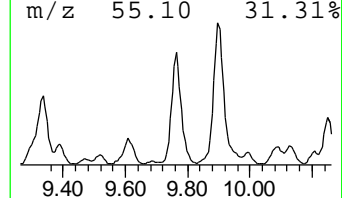
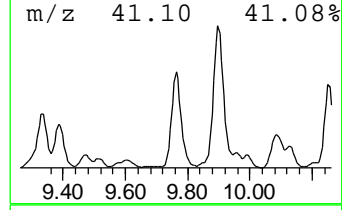
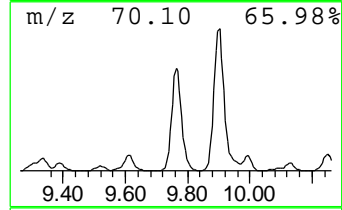
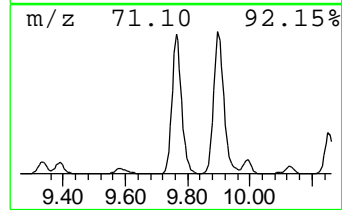
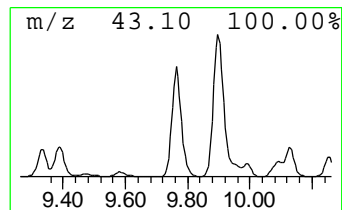
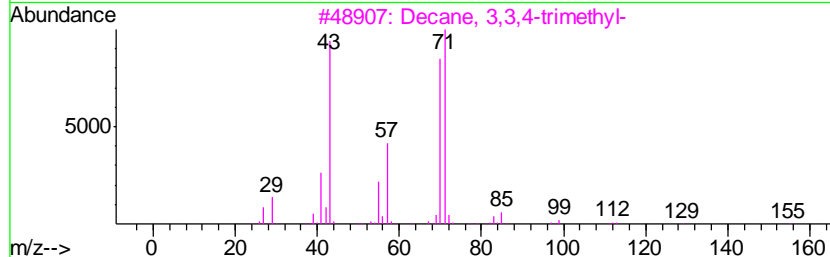
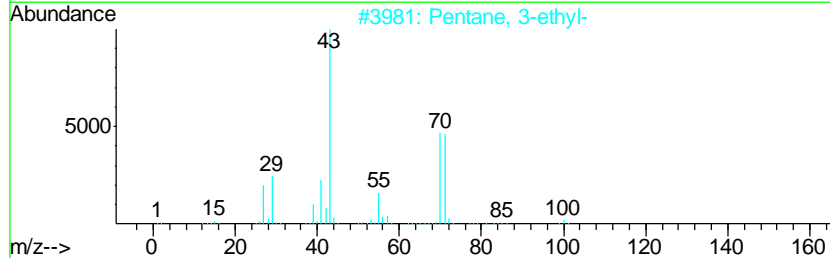
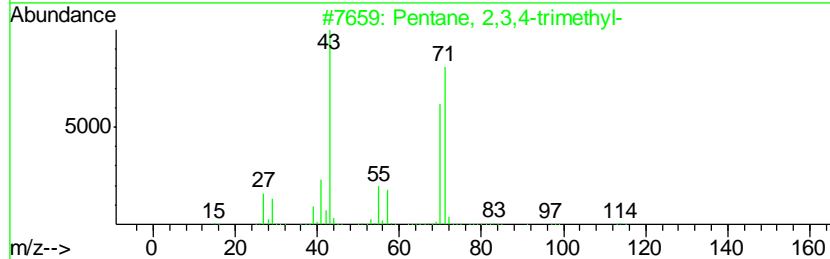
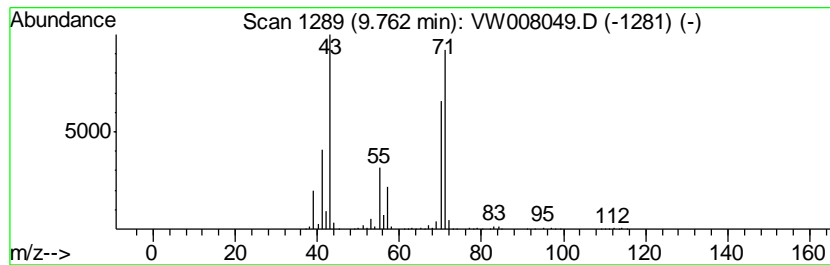
Quant Method : Z:\VOASRV\HPCHEM1\MSVOA_W\METHOD\82W010219S.M
 Quant Title : SW846 8260

TIC Library : C:\DATABASE\NIST11.L
 TIC Integration Parameters: LSCINT.P

 Peak Number 2 Pentane, 2,3,4-trimethyl- Concentration Rank 2

R.T.	EstConc	Area	Relative to ISTD	R.T.
9.76	272.85 ug/l	1813170	1,4-Difluorobenzene	8.84

Hit#	of	Tentative ID	MW	MolForm	CAS#	Qual
1	5	Pentane, 2,3,4-trimethyl-	114	C8H18	000565-75-3	90
2		Pentane, 3-ethyl-	100	C7H16	000617-78-7	83
3		Decane, 3,3,4-trimethyl-	184	C13H28	049622-18-6	83
4		Hexane, 3-methyl-	100	C7H16	000589-34-4	78
5		Hexane, 3,3,4-trimethyl-	128	C9H20	016747-31-2	74



Data Path : Z:\VOASRV\HPCHEM1\MSVOA W\DATA\VW010419\
 Data File : VW008049.D
 Acq On : 04 Jan 2019 15:56
 Operator : SY/AP
 Sample : K1044-05
 Misc : 5.09G/5ML/MSVOA W/SOIL
 ALS Vial : 12 Sample Multiplier: 1

Instrument :
 MSVOA_W
 ClientSampled :
 CPSB-10(10-15)

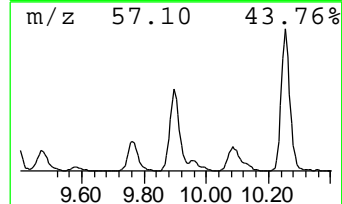
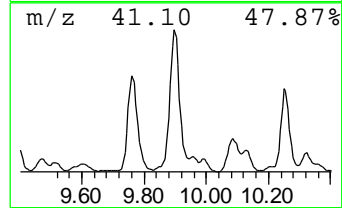
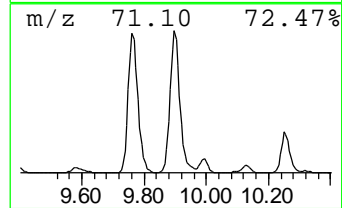
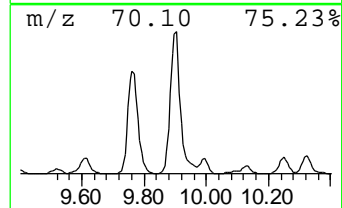
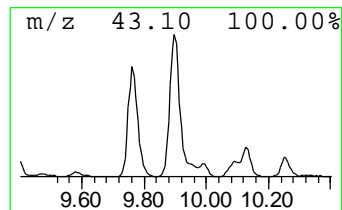
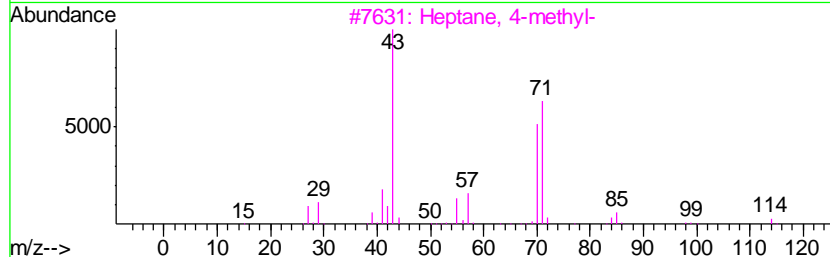
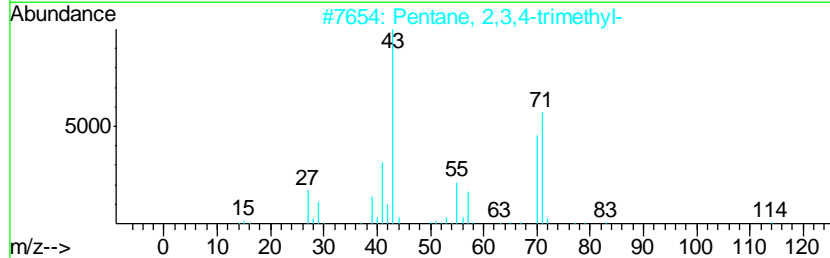
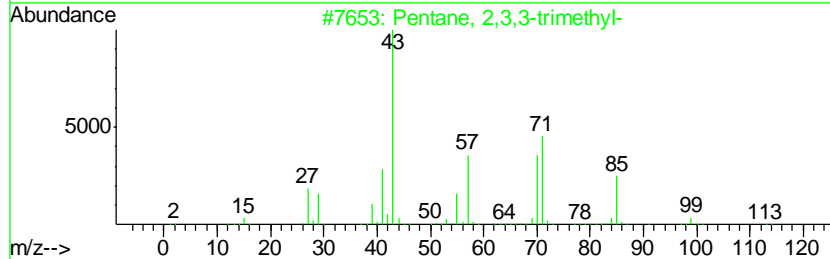
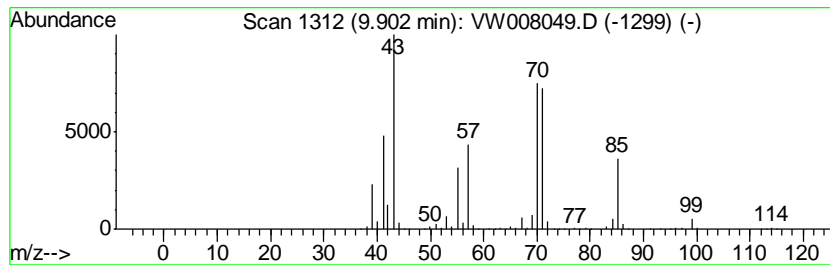
Quant Method : Z:\VOASRV\HPCHEM1\MSVOA_W\METHOD\82W010219S.M
 Quant Title : SW846 8260

TIC Library : C:\DATABASE\NIST11.L
 TIC Integration Parameters: LSCINT.P

 Peak Number 3 Pentane, 2,3,3-trimethyl- Concentration Rank 1

R.T.	EstConc	Area	Relative to ISTD	R.T.
9.90	447.50 ug/l	2973740	1,4-Difluorobenzene	8.84

Hit#	of	Tentative ID	MW	MolForm	CAS#	Qual
1	5	Pentane, 2,3,3-trimethyl-	114	C8H18	000560-21-4	83
2		Pentane, 2,3,4-trimethyl-	114	C8H18	000565-75-3	74
3		Heptane, 4-methyl-	114	C8H18	000589-53-7	72
4		Hexane, 3-methyl-	100	C7H16	000589-34-4	72
5		Decane, 3,3,4-trimethyl-	184	C13H28	049622-18-6	64



Data Path : Z:\VOASRV\HPCHEM1\MSVOA W\DATA\VW010419\
 Data File : VW008049.D
 Acq On : 04 Jan 2019 15:56
 Operator : SY/AP
 Sample : K1044-05
 Misc : 5.09G/5ML/MSVOA W/SOIL
 ALS Vial : 12 Sample Multiplier: 1

Instrument :
 MSVOA_W
 ClientSampleID :
 CPSB-10(10-15)

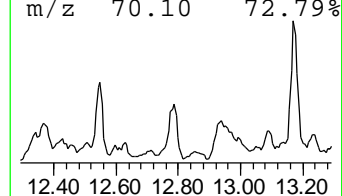
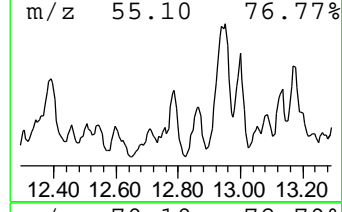
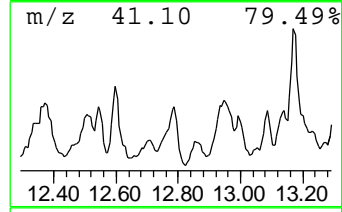
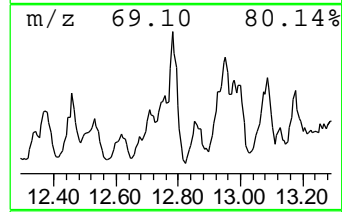
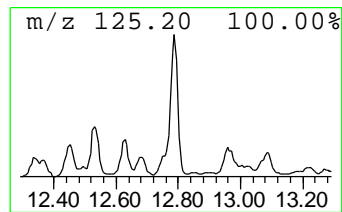
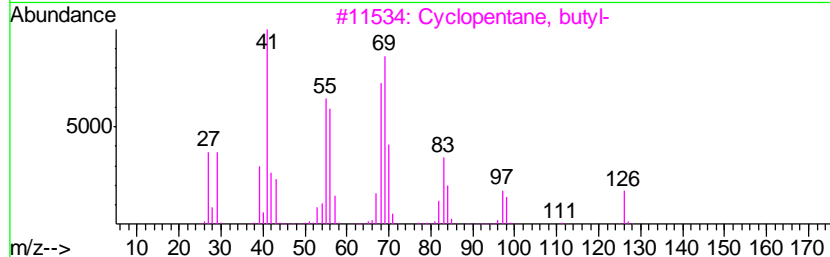
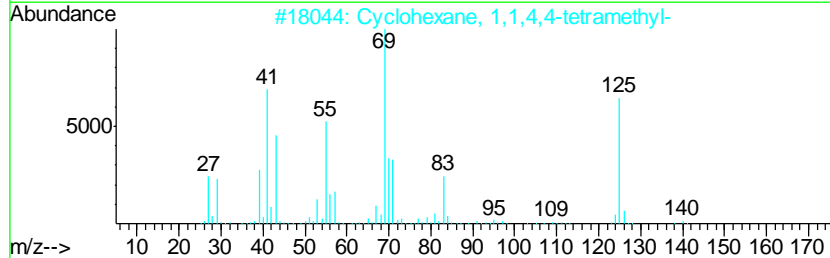
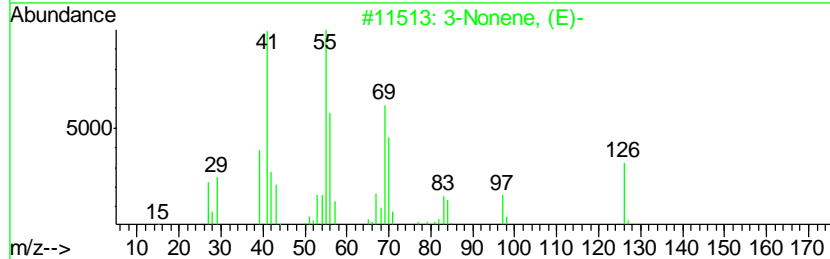
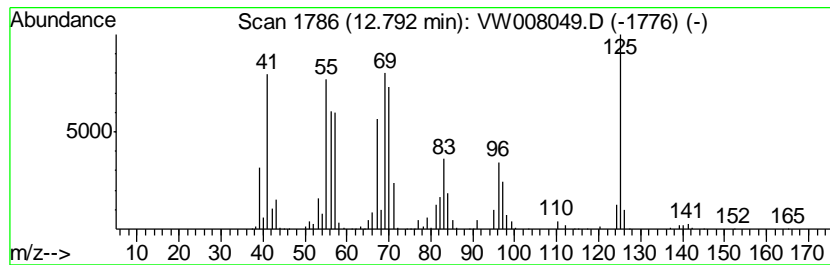
Quant Method : Z:\VOASRV\HPCHEM1\MSVOA_W\METHOD\82W010219S.M
 Quant Title : SW846 8260

TIC Library : C:\DATABASE\NIST11.L
 TIC Integration Parameters: LSCINT.P

 Peak Number 4 3-Nonene, (E)- Concentration Rank 7

R.T.	EstConc	Area	Relative to ISTD	R.T.
12.79	200.35 ug/l	1603210	1,4-Dichlorobenzene-d4	13.57

Hit#	of	Tentative ID	MW	MolForm	CAS#	Qual
1	5	3-Nonene, (E)-	126	C9H18	020063-92-7	60
2		Cyclohexane, 1,1,4,4-tetramethyl-	140	C10H20	002223-52-1	49
3		Cyclopentane, butyl-	126	C9H18	002040-95-1	46
4		1-Decene	140	C10H20	000872-05-9	38
5		Cyclopropane, 1,2-dimethyl-1-pen...	140	C10H20	062238-04-4	30



Data Path : Z:\VOASRV\HPCHEM1\MSVOA W\DATA\VW010419\
 Data File : VW008049.D
 Acq On : 04 Jan 2019 15:56
 Operator : SY/AP
 Sample : K1044-05
 Misc : 5.09G/5ML/MSVOA W/SOIL
 ALS Vial : 12 Sample Multiplier: 1

Instrument :
 MSVOA_W
 ClientSampled :
 CPSB-10(10-15)

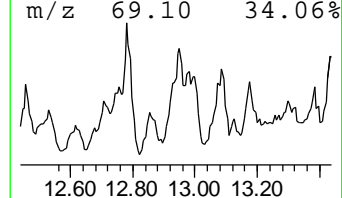
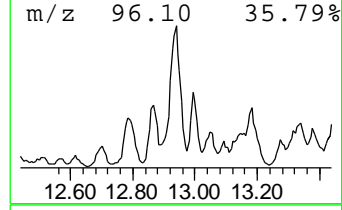
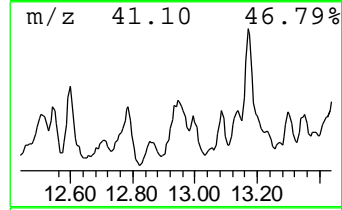
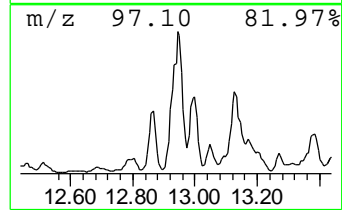
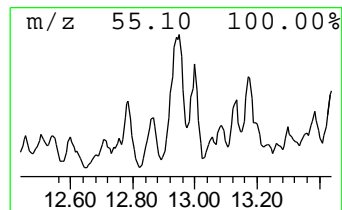
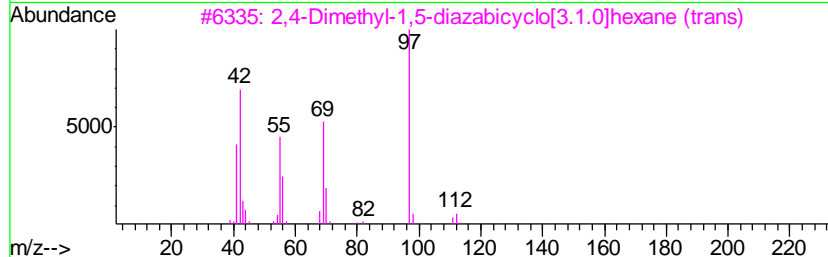
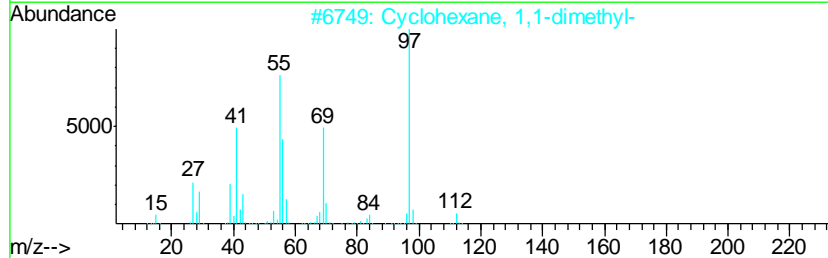
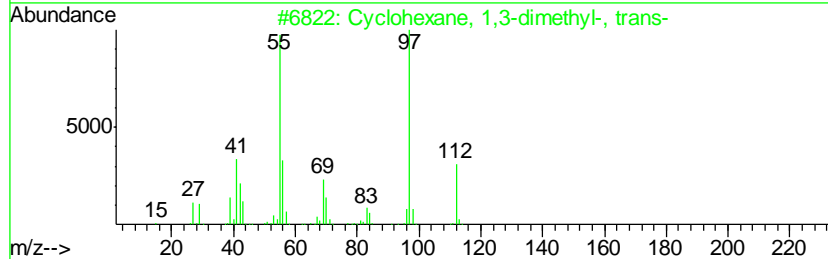
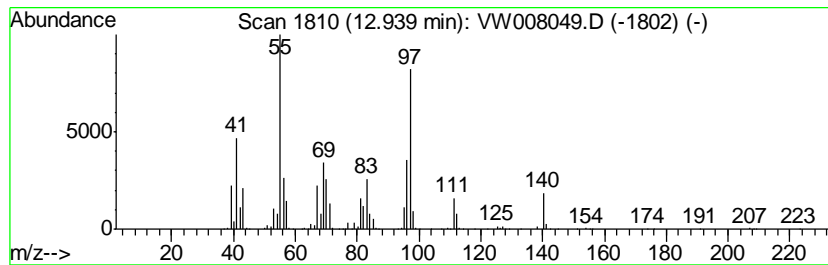
Quant Method : Z:\VOASRV\HPCHEM1\MSVOA_W\METHOD\82W010219S.M
 Quant Title : SW846 8260

TIC Library : C:\DATABASE\NIST11.L
 TIC Integration Parameters: LSCINT.P

 Peak Number 5 Cyclohexane, 1,3-dimethyl-,... Concentration Rank 3

R.T.	EstConc	Area	Relative to ISTD	R.T.
12.94	252.82 ug/l	2023080	1,4-Dichlorobenzene-d4	13.57

Hit#	of	Tentative ID	MW	MolForm	CAS#	Qual
1	5	Cyclohexane, 1,3-dimethyl-, trans-	112	C8H16	002207-03-6	62
2		Cyclohexane, 1,1-dimethyl-	112	C8H16	000590-66-9	55
3		2,4-Dimethyl-1,5-diazabicyclo[3....	112	C6H12N2	1000283-20-9	53
4		Cyclohexane, 1,3-dimethyl-, cis-	112	C8H16	000638-04-0	52
5		Cyclohexane, 1-ethyl-4-methyl-, ...	126	C9H18	004926-78-7	50



Data Path : Z:\VOASRV\HPCHEM1\MSVOA W\DATA\VW010419\
 Data File : VW008049.D
 Acq On : 04 Jan 2019 15:56
 Operator : SY/AP
 Sample : K1044-05
 Misc : 5.09G/5ML/MSVOA W/SOIL
 ALS Vial : 12 Sample Multiplier: 1

Instrument :
 MSVOA_W
 ClientSampled :
 CPSB-10(10-15)

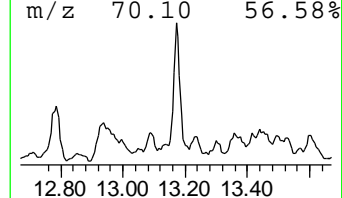
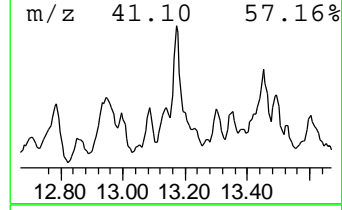
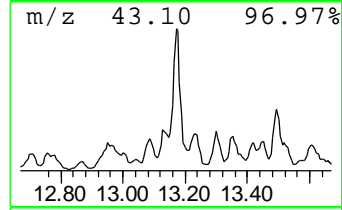
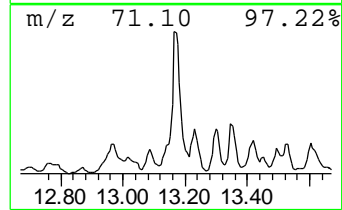
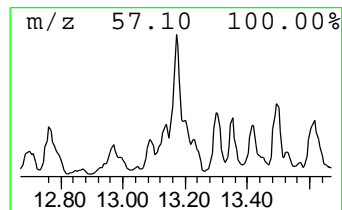
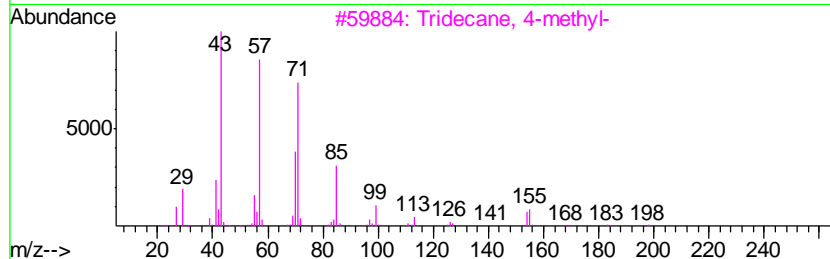
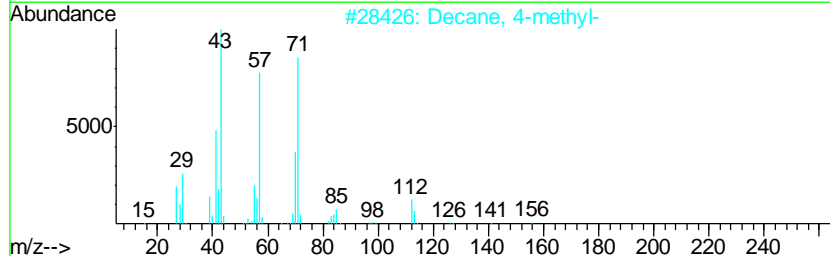
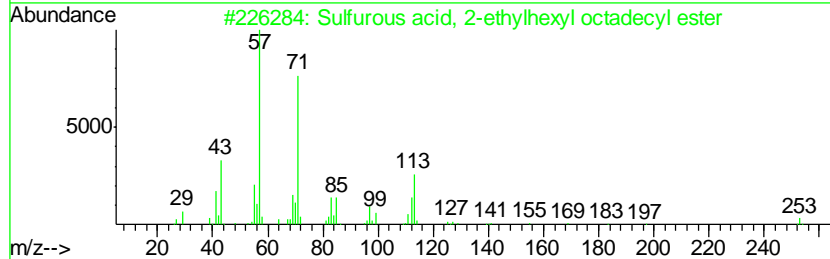
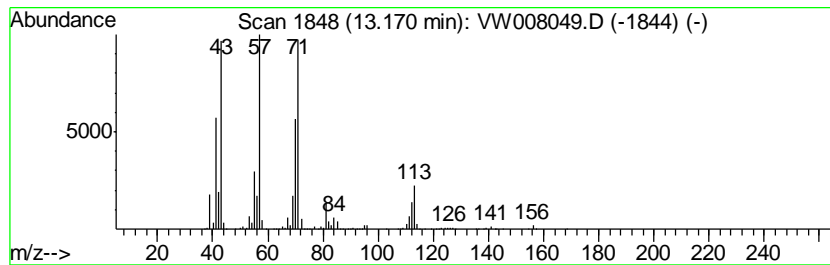
Quant Method : Z:\VOASRV\HPCHEM1\MSVOA_W\METHOD\82W010219S.M
 Quant Title : SW846 8260

TIC Library : C:\DATABASE\NIST11.L
 TIC Integration Parameters: LSCINT.P

 Peak Number 6 Sulfurous acid, 2-ethylhexy... Concentration Rank 5

R.T.	EstConc	Area	Relative to ISTD	R.T.
13.17	208.89 ug/l	1671530	1,4-Dichlorobenzene-d4	13.57

Hit#	of	Tentative ID	MW	MolForm	CAS#	Qual
1	5	Sulfurous acid, 2-ethylhexyl oct...	446	C26H54O3S	1000309-20-1	72
2		Decane, 4-methyl-	156	C11H24	002847-72-5	68
3		Tridecane, 4-methyl-	198	C14H30	026730-12-1	64
4		Sulfurous acid, 2-ethylhexyl hep...	432	C25H52O3S	1000309-20-0	64
5		Octane, 3-ethyl-	142	C10H22	005881-17-4	59



Data Path : Z:\VOASRV\HPCHEM1\MSVOA W\DATA\VW010419\
 Data File : VW008049.D
 Acq On : 04 Jan 2019 15:56
 Operator : SY/AP
 Sample : K1044-05
 Misc : 5.09G/5ML/MSVOA W/SOIL
 ALS Vial : 12 Sample Multiplier: 1

Instrument :
 MSVOA_W
 ClientSampleId :
 CPSB-10(10-15)

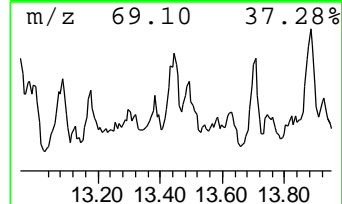
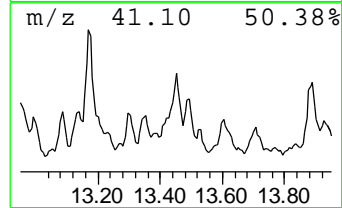
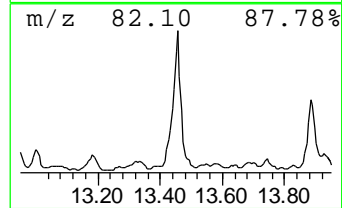
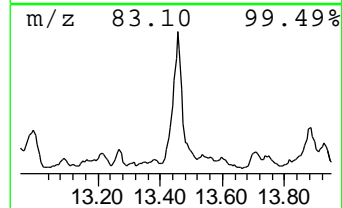
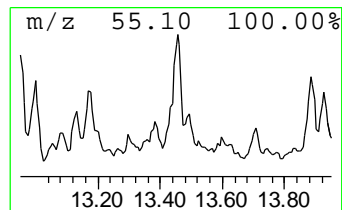
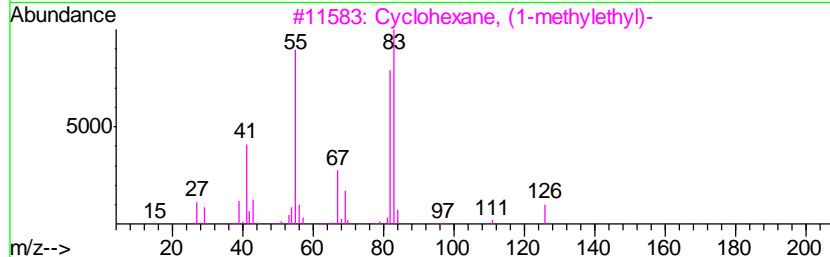
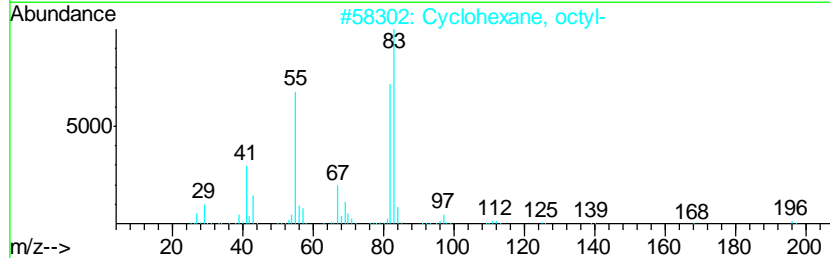
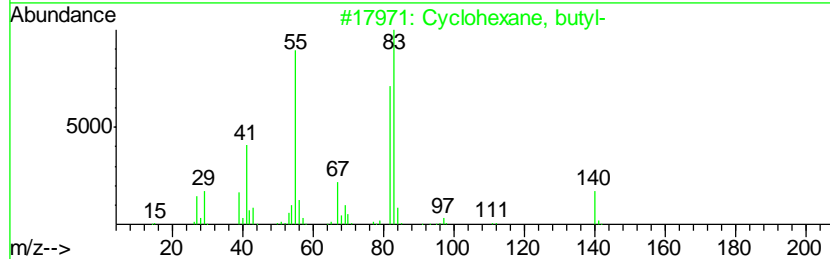
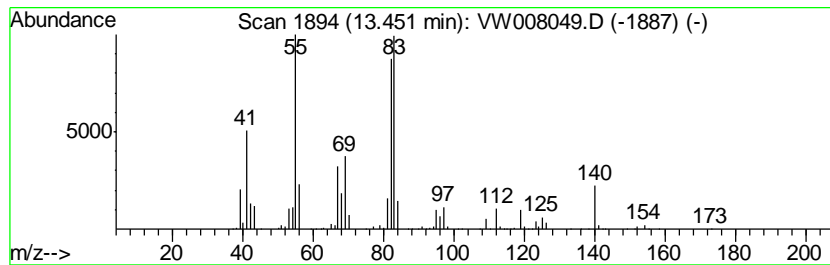
Quant Method : Z:\VOASRV\HPCHEM1\MSVOA_W\METHOD\82W010219S.M
 Quant Title : SW846 8260

TIC Library : C:\DATABASE\NIST11.L
 TIC Integration Parameters: LSCINT.P

 Peak Number 7 Cyclohexane, butyl- Concentration Rank 4

R.T.	EstConc	Area	Relative to ISTD	R.T.
13.45	212.66 ug/l	1701740	1,4-Dichlorobenzene-d4	13.57

Hit#	of	Tentative ID	MW	MolForm	CAS#	Qual
1	5	Cyclohexane, butyl-	140	C10H20	001678-93-9	72
2		Cyclohexane, octyl-	196	C14H28	001795-15-9	59
3		Cyclohexane, (1-methylethyl)-	126	C9H18	000696-29-7	59
4		Cyclohexane, pentyl-	154	C11H22	004292-92-6	53
5		Cyclohexane, propyl-	126	C9H18	001678-92-8	53



Data Path : Z:\VOASRV\HPCHEM1\MSVOA W\DATA\VW010419\
 Data File : VW008049.D
 Acq On : 04 Jan 2019 15:56
 Operator : SY/AP
 Sample : K1044-05
 Misc : 5.09G/5ML/MSVOA W/SOIL
 ALS Vial : 12 Sample Multiplier: 1

Instrument :
 MSVOA_W
 ClientSampled :
 CPSB-10(10-15)

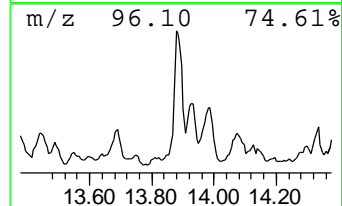
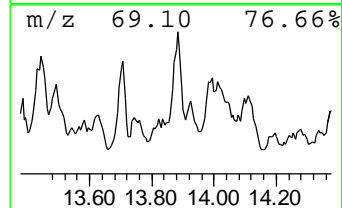
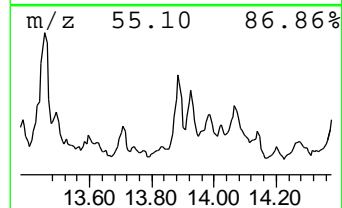
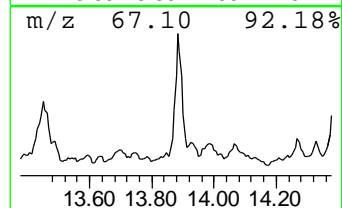
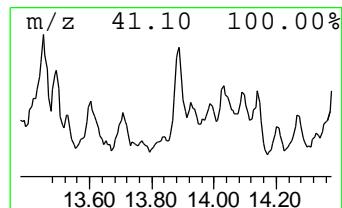
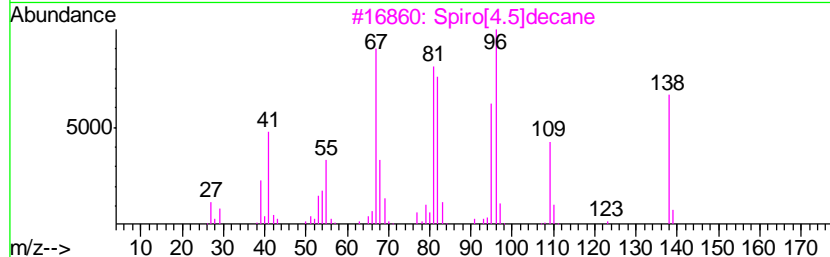
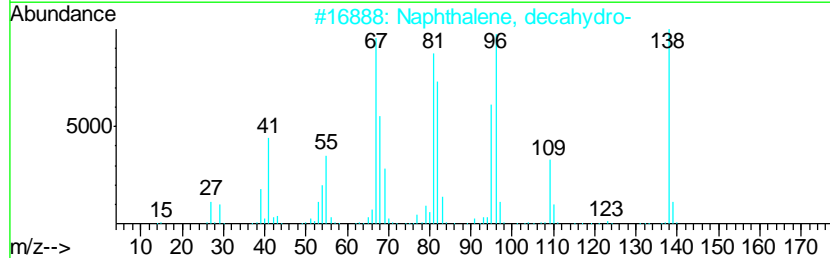
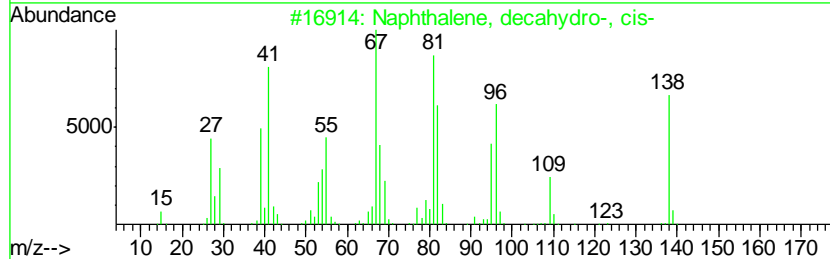
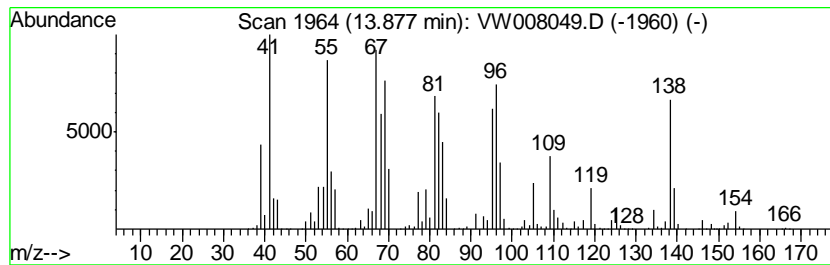
Quant Method : Z:\VOASRV\HPCHEM1\MSVOA_W\METHOD\82W010219S.M
 Quant Title : SW846 8260

TIC Library : C:\DATABASE\NIST11.L
 TIC Integration Parameters: LSCINT.P

 Peak Number 8 Naphthalene, decahydro-, cis- Concentration Rank 6

R.T.	EstConc	Area	Relative to ISTD	R.T.
13.88	201.87 ug/l	1615350	1,4-Dichlorobenzene-d4	13.57

Hit#	of	Tentative ID	MW	MolForm	CAS#	Qual
1	5	Naphthalene, decahydro-, cis-	138	C10H18	000493-01-6	94
2		Naphthalene, decahydro-	138	C10H18	000091-17-8	81
3		Spiro[4.5]decane	138	C10H18	000176-63-6	76
4		Cyclodecene	138	C10H18	003618-12-0	74
5		1-Hexadecyne	222	C16H30	000629-74-3	64



Data Path : Z:\VOASRV\HPCHEM1\MSVOA W\DATA\VW010419\
 Data File : VW008049.D
 Acq On : 04 Jan 2019 15:56
 Operator : SY/AP
 Sample : K1044-05
 Misc : 5.09G/5ML/MSVOA W/SOIL
 ALS Vial : 12 Sample Multiplier: 1

Instrument :
 MSVOA_W
 ClientSampled :
 CPSB-10(10-15)

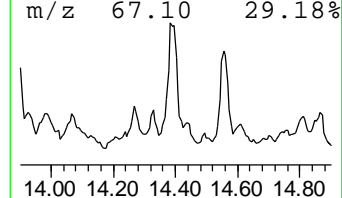
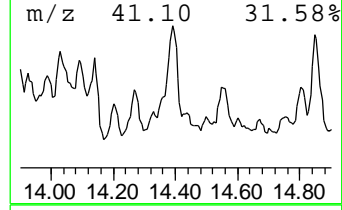
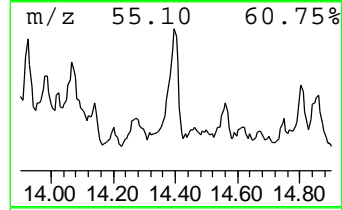
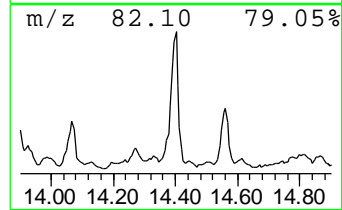
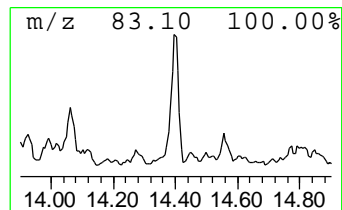
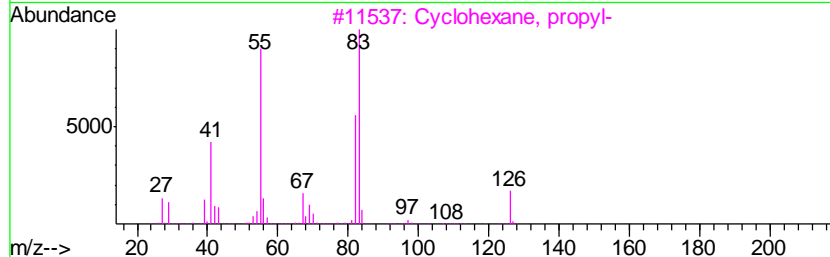
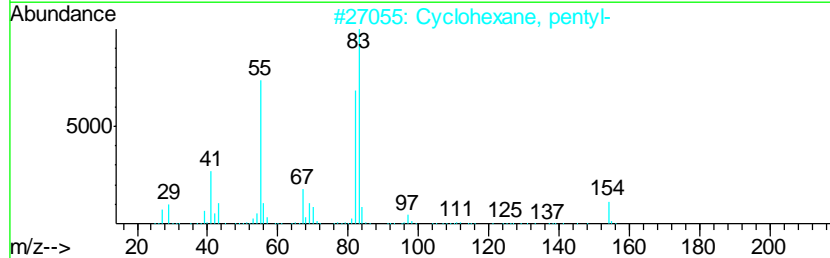
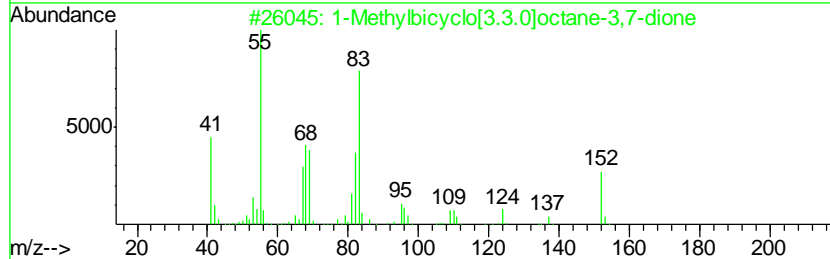
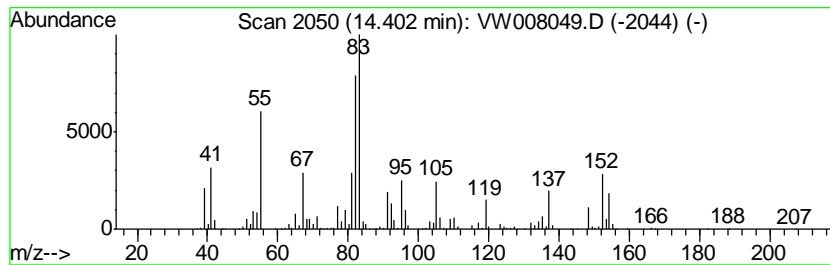
Quant Method : Z:\VOASRV\HPCHEM1\MSVOA_W\METHOD\82W010219S.M
 Quant Title : SW846 8260

TIC Library : C:\DATABASE\NIST11.L
 TIC Integration Parameters: LSCINT.P

 Peak Number 9 1-Methylbicyclo[3.3.0]octan... Concentration Rank 9

R.T.	EstConc	Area	Relative to ISTD	R.T.
14.40	195.41 ug/l	1563680	1,4-Dichlorobenzene-d4	13.57

Hit#	of	Tentative ID	MW	MolForm	CAS#	Qual
1	5	1-Methylbicyclo[3.3.0]octane-3,7...	152	C9H12O2	021170-08-1	72
2		Cyclohexane, pentyl-	154	C11H22	004292-92-6	45
3		Cyclohexane, propyl-	126	C9H18	001678-92-8	38
4		Cyclohexane, 1,1'-(1,4-butanedi...	222	C16H30	006165-44-2	38
5		Cyclohexane, tetradecyl-	280	C20H40	001795-18-2	35



Data Path : Z:\VOASRV\HPCHEM1\MSVOA W\DATA\VW010419\
 Data File : VW008049.D
 Acq On : 04 Jan 2019 15:56
 Operator : SY/AP
 Sample : K1044-05
 Misc : 5.09G/5ML/MSVOA W/SOIL
 ALS Vial : 12 Sample Multiplier: 1

Instrument :
 MSVOA_W
 ClientSampled :
 CPSB-10(10-15)

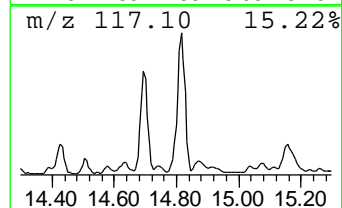
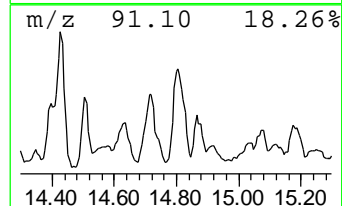
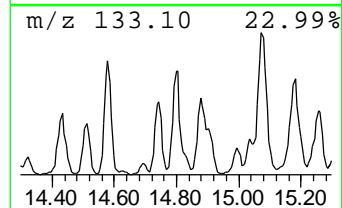
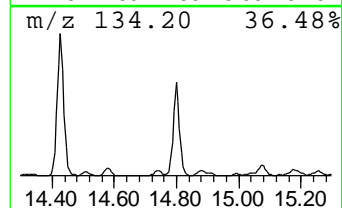
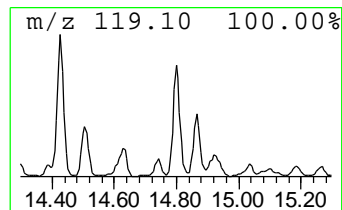
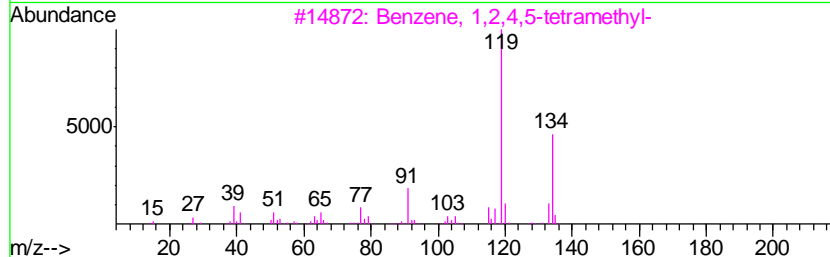
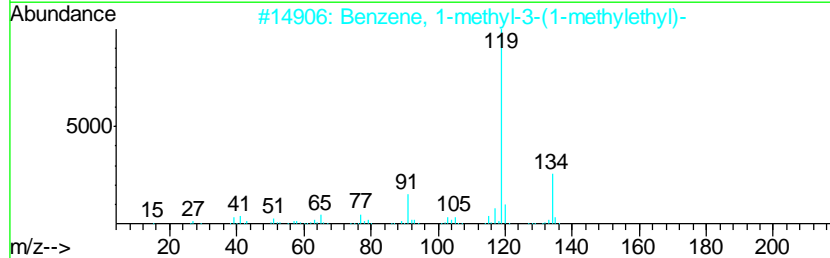
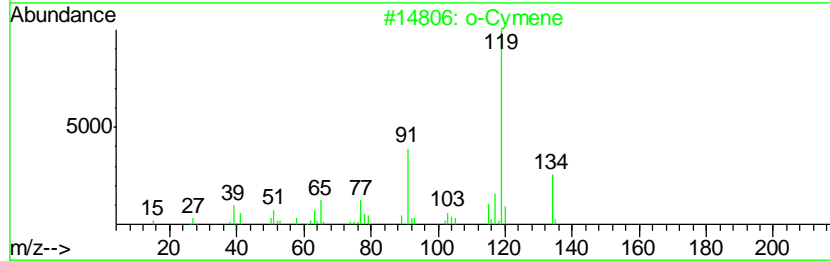
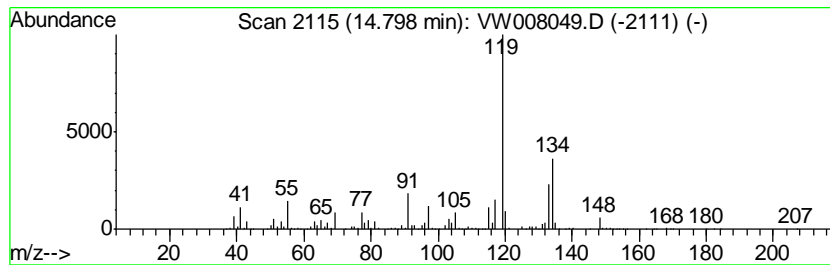
Quant Method : Z:\VOASRV\HPCHEM1\MSVOA_W\METHOD\82W010219S.M
 Quant Title : SW846 8260

TIC Library : C:\DATABASE\NIST11.L
 TIC Integration Parameters: LSCINT.P

 Peak Number 10 o-Cymene Concentration Rank 10

R.T.	EstConc	Area	Relative to ISTD	R.T.
14.80	159.15 ug/l	1273510	1,4-Dichlorobenzene-d4	13.57

Hit#	of	Tentative ID	MW	MolForm	CAS#	Qual
1	5	o-Cymene	134	C10H14	000527-84-4	64
2		Benzene, 1-methyl-3-(1-methyleth...	134	C10H14	000535-77-3	64
3		Benzene, 1,2,4,5-tetramethyl-	134	C10H14	000095-93-2	64
4		p-Cymene	134	C10H14	000099-87-6	64
5		Benzene, 1,2,3,4-tetramethyl-	134	C10H14	000488-23-3	64



Data Path : Z:\VOASRV\HPCHEM1\MSVOA_W\DATA\VW010419\
 Data File : VW008049.D
 Acq On : 04 Jan 2019 15:56
 Operator : SY/AP
 Sample : K1044-05
 Misc : 5.09G/5ML/MSVOA_W/SOIL
 ALS Vial : 12 Sample Multiplier: 1

Instrument :
 MSVOA_W
 ClientSampleId :
 CPSB-10(10-15)

Quant Method : Z:\VOASRV\HPCHEM1\MSVOA_W\METHOD\82W010219S.M
 Quant Title : SW846 8260

TIC Library : C:\DATABASE\NIST11.L
 TIC Integration Parameters: LSCINT.P

TIC Top Hit name	RT	EstConc	Units	Response	--Internal Standard--			
					#	RT	Resp	Conc
Pentane, 2,2,4-tr...	8.48	198.0	ug/l	1315580	2	8.84	332263	50.0
Pentane, 2,3,4-tr...	9.76	272.9	ug/l	1813170	2	8.84	332263	50.0
Pentane, 2,3,3-tr...	9.90	447.5	ug/l	2973740	2	8.84	332263	50.0
3-Nonene, (E)-	12.79	200.3	ug/l	1603210	4	13.57	400105	50.0
Cyclohexane, 1,3-...	12.94	252.8	ug/l	2023080	4	13.57	400105	50.0
Sulfurous acid, 2...	13.17	208.9	ug/l	1671530	4	13.57	400105	50.0
Cyclohexane, butyl-	13.45	212.7	ug/l	1701740	4	13.57	400105	50.0
Naphthalene, deca...	13.88	201.9	ug/l	1615350	4	13.57	400105	50.0
1-Methylbicyclo[3...	14.40	195.4	ug/l	1563680	4	13.57	400105	50.0
o-Cymene	14.80	159.2	ug/l	1273510	4	13.57	400105	50.0