

Data Path : Z:\VOASRV\HPCHEM1\MSVOA_W\DATA\VW010820\
 Data File : VW014558.D
 Acq On : 08 Jan 2020 14:01
 Operator : SY/VA
 Sample : K6476-05
 Misc : 10.00G/5ML/MSVOA_W/SOIL
 ALS Vial : 10 Sample Multiplier: 1

Instrument :
 MSVOA_W
 ClientSampleId :
 WP022SB455_191227-12-14

Integration Parameters: RTEINT.P

Integrator: RTE
 Smoothing : ON
 Sampling : 1
 Start Thrs: 0.2
 Stop Thrs : 0

Filtering: 5
 Min Area: 3 % of largest Peak
 Max Peaks: 100
 Peak Location: TOP

If leading or trailing edge < 100 prefer < Baseline drop else tangent >
 Peak separation: 5

Method : Z:\VOASRV\HPCHEM1\MSVOA_W\METHOD\82W010320S.M
 Title : SW846 8260

Signal : TIC

peak #	R.T. min	first scan	max scan	last scan	PK TY	peak height	corr. area	corr. % max.	% of total
1	4.915	480	494	510	rBV2	44257	167722	5.60%	1.036%
2	7.135	849	858	878	rVB	59328	176033	5.88%	1.087%
3	7.884	970	981	985	rBV	388658	928043	30.98%	5.732%
4	7.945	985	991	1004	rVB	816026	1822661	60.84%	11.258%
5	8.299	1033	1049	1062	rBV	335489	778052	25.97%	4.806%
6	8.842	1128	1138	1152	rBV	1178397	2368993	79.07%	14.632%
7	10.323	1372	1381	1389	rBV	1678138	2995991	100.00%	18.505%
8	10.701	1437	1443	1450	rBV2	28009	52435	1.75%	0.324%
9	10.860	1460	1469	1477	rVB4	16331	34199	1.14%	0.211%
10	11.061	1497	1502	1510	rBV2	37684	62798	2.10%	0.388%
11	11.628	1587	1595	1608	rBV	1409610	2461774	82.17%	15.205%
12	12.615	1749	1757	1768	rBV	1037845	1721380	57.46%	10.632%
13	12.932	1805	1809	1815	rVB3	20507	33038	1.10%	0.204%
14	13.499	1896	1902	1905	rBV3	34759	59975	2.00%	0.370%
15	13.554	1905	1911	1924	rVB	1156312	1941843	64.81%	11.994%
16	14.066	1991	1995	2003	rVB	28496	50008	1.67%	0.309%
17	14.627	2083	2087	2093	rVB3	23419	39117	1.31%	0.242%
18	15.438	2211	2220	2225	rBV	46513	86971	2.90%	0.537%
19	16.023	2308	2316	2322	rBV3	60309	144370	4.82%	0.892%
20	16.456	2380	2387	2394	rBV3	40814	126214	4.21%	0.780%
21	16.627	2410	2415	2421	rBV2	58827	138825	4.63%	0.857%

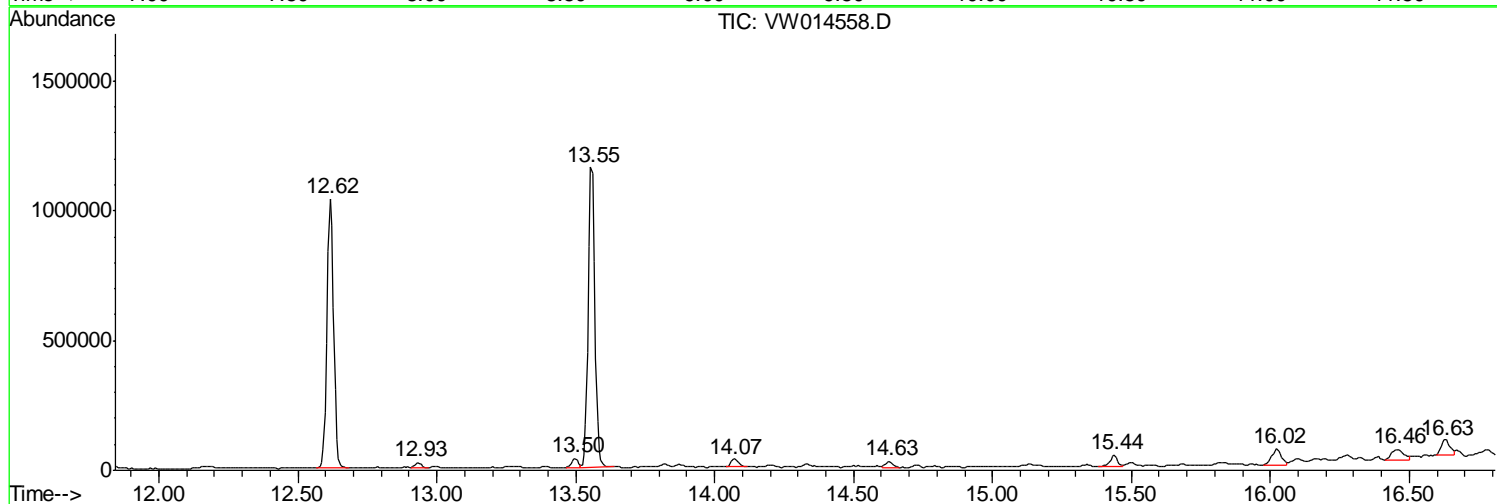
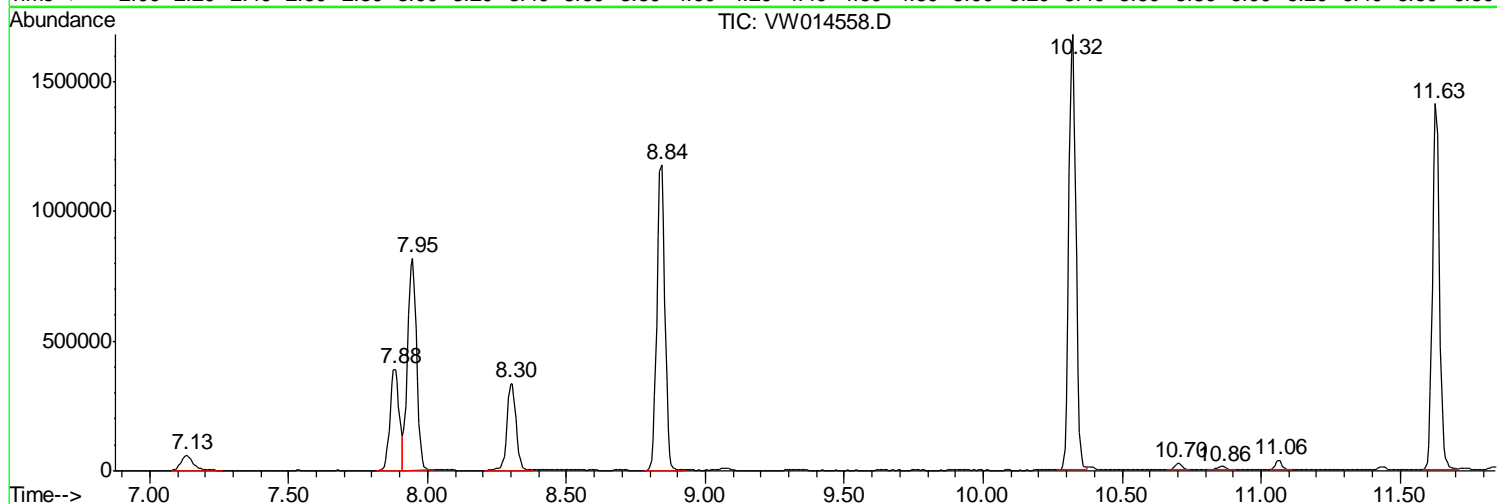
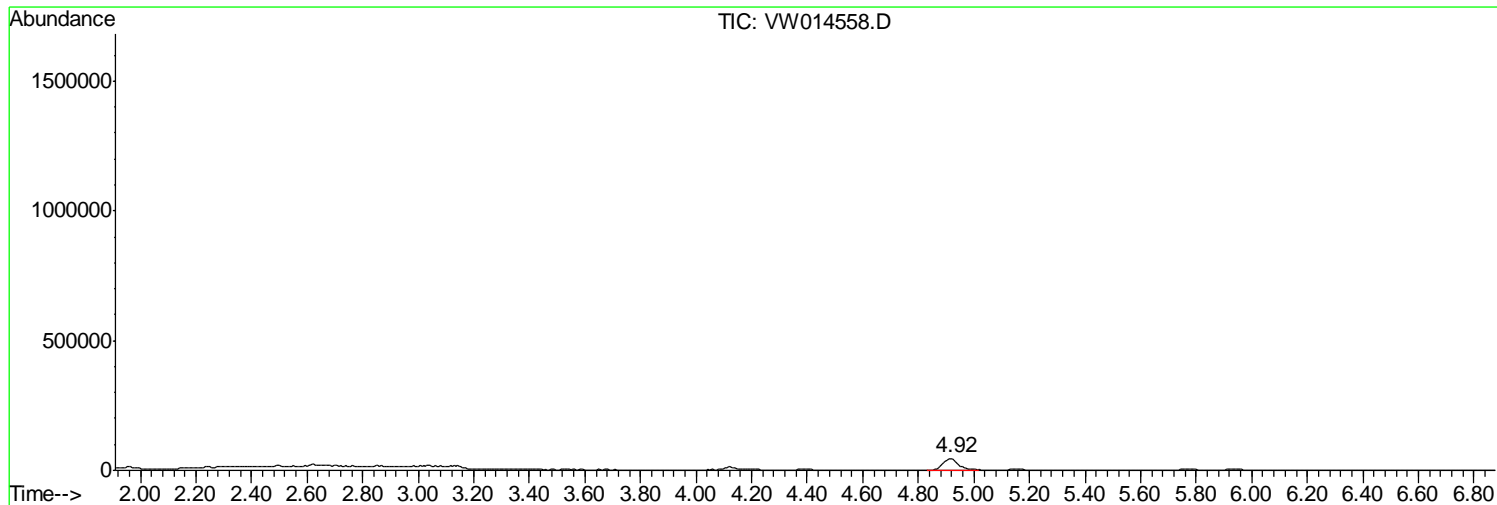
Sum of corrected areas: 16190442

Data Path : Z:\VOASRV\HPCHEM1\MSVOA_W\DATA\VW010820\
Data File : VW014558.D
Acq On : 08 Jan 2020 14:01
Operator : SY/VA
Sample : K6476-05
Misc : 10.00G/5ML/MSVOA_W/SOIL
ALS Vial : 10 Sample Multiplier: 1

Instrument :
MSVOA_W
ClientSampleId :
WP022SB455_191227-12-14

Quant Method : Z:\VOASRV\HPCHEM1\MSVOA_W\METHOD\82W010320S.M
Quant Title : SW846 8260

TIC Library : C:\DATABASE\NIST11.L
TIC Integration Parameters: LSCINT.P



Data Path : Z:\VOASRV\HPCHEM1\MSVOA_W\DATA\VW010820\
Data File : VW014558.D
Acq On : 08 Jan 2020 14:01
Operator : SY/VA
Sample : K6476-05
Misc : 10.00G/5ML/MSVOA_W/SOIL
ALS Vial : 10 Sample Multiplier: 1

Instrument :
MSVOA_W
ClientSampleId :
WP022SB455_191227-12-14

Quant Method : Z:\VOASRV\HPCHEM1\MSVOA_W\METHOD\82W010320S.M
Quant Title : SW846 8260

TIC Library : C:\DATABASE\NIST11.L
TIC Integration Parameters: LSCINT.P

No Library Search Compounds Detected

Data Path : Z:\VOASRV\HPCHEM1\MSVOA_W\DATA\VW010820\
Data File : VW014558.D
Acq On : 08 Jan 2020 14:01
Operator : SY/VA
Sample : K6476-05
Misc : 10.00G/5ML/MSVOA_W/SOIL
ALS Vial : 10 Sample Multiplier: 1

Instrument :
MSVOA_W
ClientSampleId :
WP022SB455_191227-12-14

Quant Method : Z:\VOASRV\HPCHEM1\MSVOA_W\METHOD\82W010320S.M
Quant Title : SW846 8260

TIC Library : C:\DATABASE\NIST11.L
TIC Integration Parameters: LSCINT.P

TIC Top Hit name	RT	EstConc	Units	Response	--Internal Standard--			
					#	RT	Resp	Conc
