

Data Path : Z:\VOASRV\HPCHEM1\MSVOA_W\DATA\VW010919\
 Data File : VW008134.D
 Acq On : 10 Jan 2019 06:45
 Operator : SY/AP
 Sample : K1087-16
 Misc : 5.49G/5ML/MSVOA_W/SOIL
 ALS Vial : 46 Sample Multiplier: 1

Instrument :
 MSVOA_W
 ClientSampleId :
 MH-444-10.0-11.0

Quant Time: Jan 10 08:07:32 2019
 Quant Method : Z:\VOASRV\HPCHEM1\MSVOA_W\METHOD\82W010819S.M
 Quant Title : SW846 8260
 QLast Update : Wed Jan 09 04:40:48 2019
 Response via : Initial Calibration

Internal Standards	R.T.	QIon	Response	Conc	Units	Dev(Min)
1) Pentafluorobenzene	7.95	168	54476	50.00	ug/l	0.00
34) 1,4-Difluorobenzene	8.84	114	106553	50.00	ug/l	0.00
63) Chlorobenzene-d5	11.63	117	95552	50.00	ug/l	0.00
72) 1,4-Dichlorobenzene-d4	13.56	152	41778	50.00	ug/l	0.00

System Monitoring Compounds

33) 1,2-Dichloroethane-d4	8.31	65	38994	63.69	ug/l	0.00
Spiked Amount				50.000		
			Recovery	=	127.38%	
35) Dibromofluoromethane	7.88	113	33182	53.39	ug/l	0.00
Spiked Amount				50.000		
			Recovery	=	106.78%	
50) Toluene-d8	10.32	98	138259	53.02	ug/l	0.00
Spiked Amount				50.000		
			Recovery	=	106.04%	
62) 4-Bromofluorobenzene	12.62	95	45101	48.24	ug/l	0.00
Spiked Amount				50.000		
			Recovery	=	96.48%	

Target Compounds

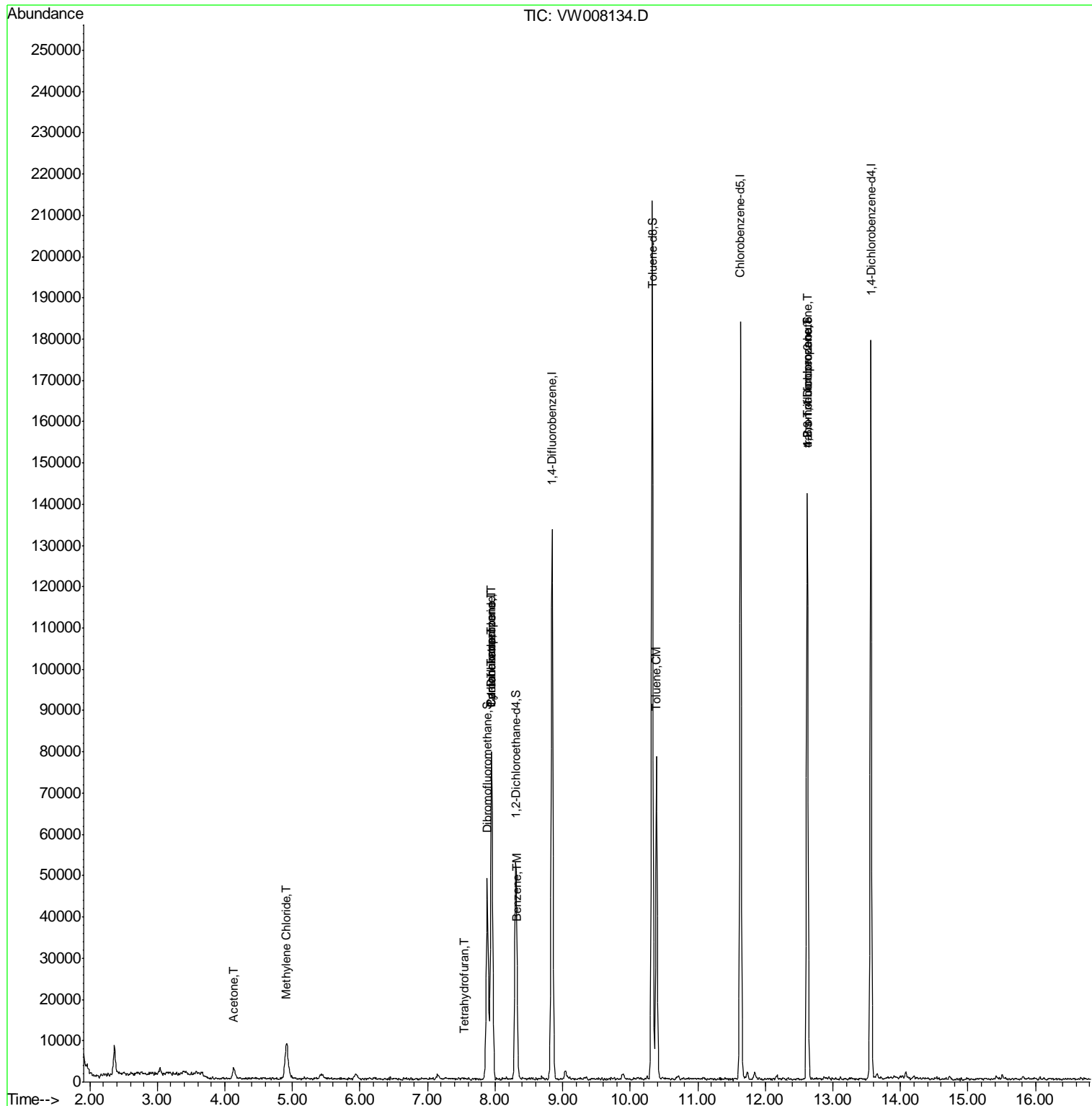
						Qvalue
11) Tert butyl alcohol	5.24	59	113	Below Cal	#	100
16) Acetone	4.14	43	4509	21.653	ug/l	91
20) Methylene Chloride	4.91	84	6323	6.285	ug/l	91
29) Tetrahydrofuran	7.54	42	251	2.206	ug/l #	50
31) Cyclohexane	7.95	56	1671	1.297	ug/l #	1
36) 1,1-Dichloropropene	7.94	75	5189	4.728	ug/l #	49
38) Carbon Tetrachloride	7.95	117	6016	5.988	ug/l #	16
40) Benzene	8.33	78	3887	1.306	ug/l	98
52) Toluene	10.39	92	32550	17.120	ug/l	99
76) 1,2,3-Trichloropropane	12.62	75	23305	61.192	ug/l #	1
81) trans-1,4-Dichloro-2-buten	12.62	75	23305	142.497	ug/l #	11

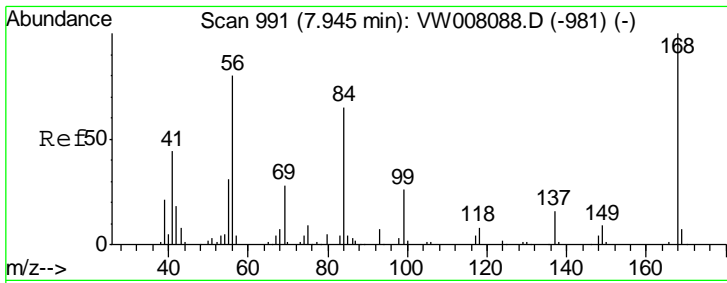
(#) = qualifier out of range (m) = manual integration (+) = signals summed

Data Path : Z:\VOASRV\HPCHEM1\MSVOA_W\DATA\VW010919\
 Data File : VW008134.D
 Acq On : 10 Jan 2019 06:45
 Operator : SY/AP
 Sample : K1087-16
 Misc : 5.49G/5ML/MSVOA_W/SOIL
 ALS Vial : 46 Sample Multiplier: 1

Instrument :
 MSVOA_W
 ClientSampleId :
 MH-444-10.0-11.0

Quant Time: Jan 10 08:07:32 2019
 Quant Method : Z:\VOASRV\HPCHEM1\MSVOA_W\METHOD\82W010819S.M
 Quant Title : SW846 8260
 QLast Update : Wed Jan 09 04:40:48 2019
 Response via : Initial Calibration

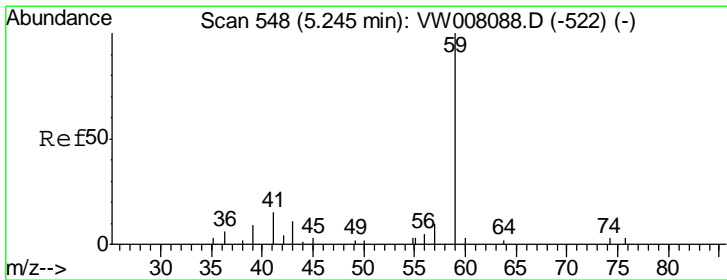
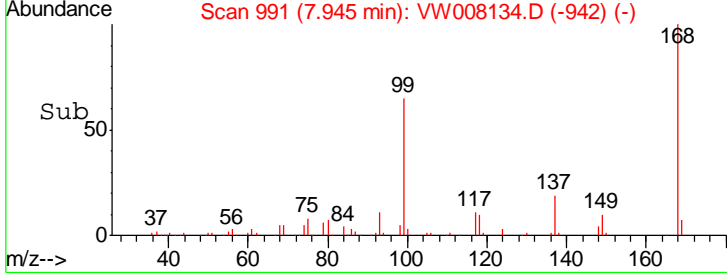
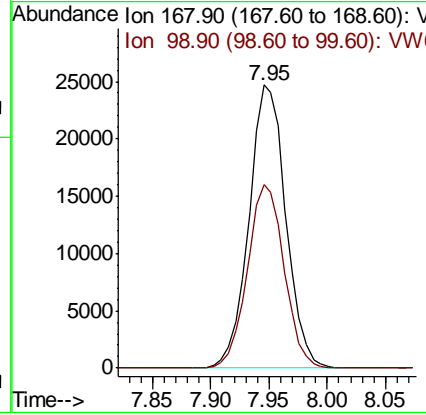
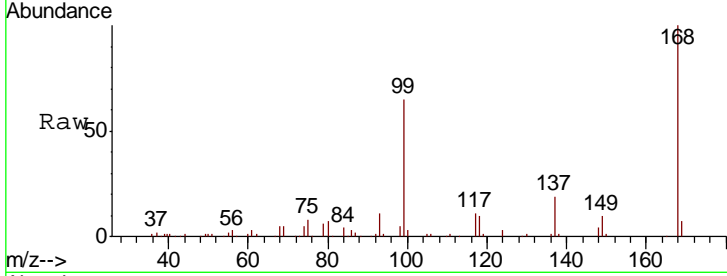




#1
 Pentafluorobenzene
 Concen: 50.000 ug/l
 RT: 7.95 min Scan# 991
 Delta R.T. 0.00 min
 Lab File: VW008134.D
 Acq: 10 Jan 2019 06:45

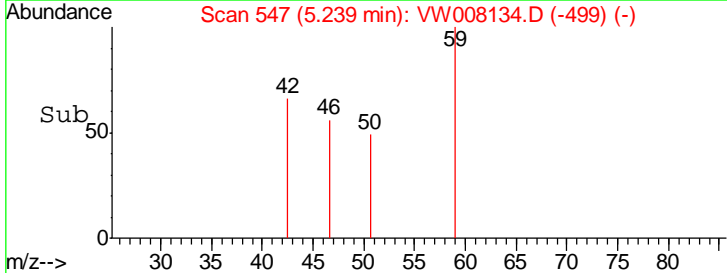
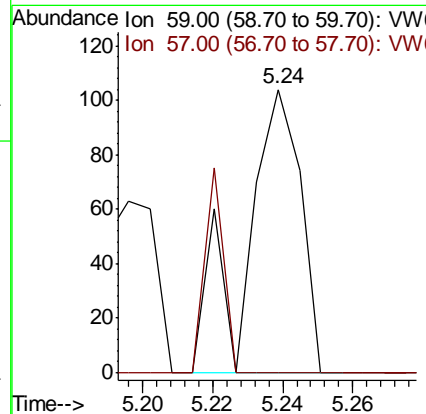
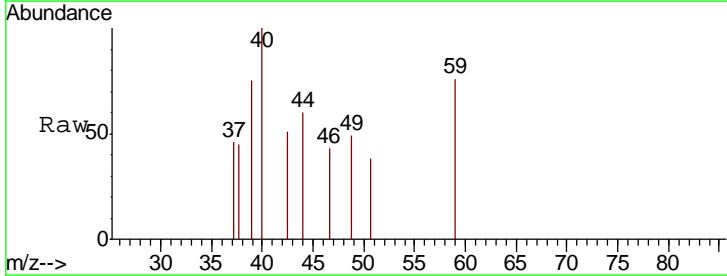
Instrument :
 MSVOA_W
 ClientSampled :
 MH-44-10.0-11.0

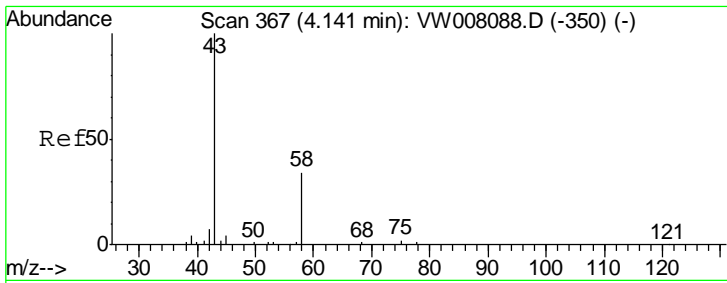
Tgt Ion: 168 Resp: 54476
 Ion Ratio Lower Upper
 168 100
 99 64.8 52.6 78.8



#11
 Tert butyl alcohol
 Concen: Below Cal
 RT: 5.24 min Scan# 547
 Delta R.T. -0.01 min
 Lab File: VW008134.D
 Acq: 10 Jan 2019 06:45

Tgt Ion: 59 Resp: 113
 Ion Ratio Lower Upper
 59 100
 57 0.0 0.0 0.0

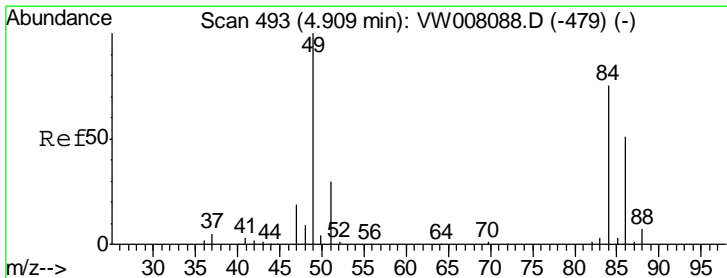
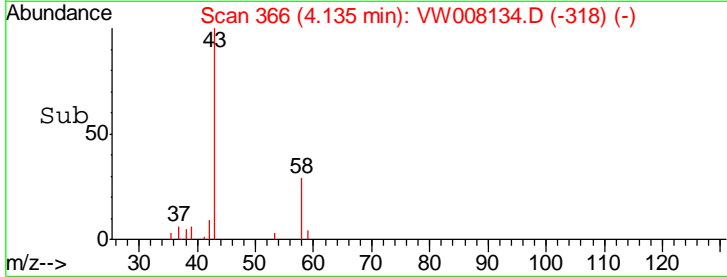
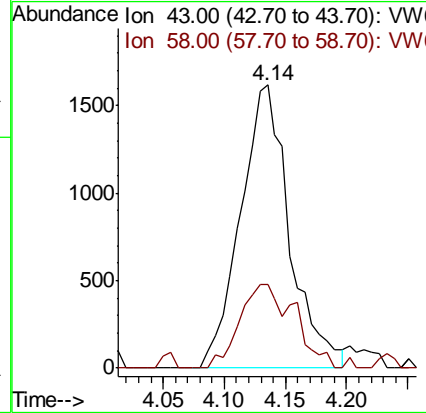
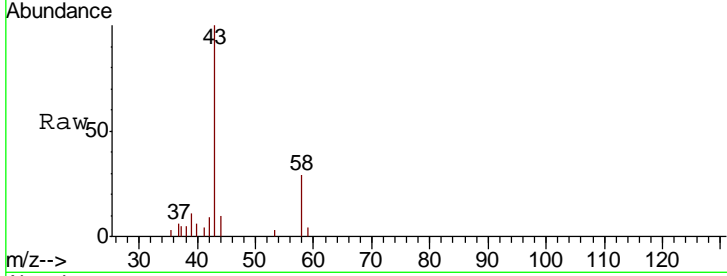




#16
 Acetone
 Concen: 21.653 ug/l
 RT: 4.14 min Scan# 366
 Delta R.T. -0.01 min
 Lab File: VW008134.D
 Acq: 10 Jan 2019 06:45

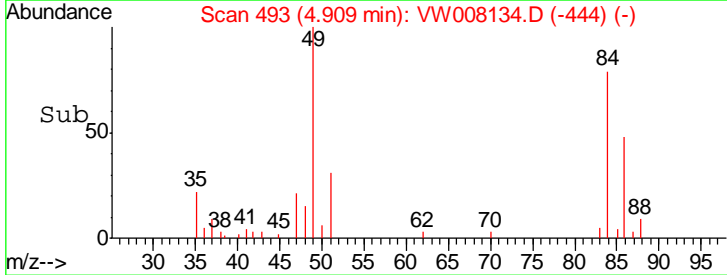
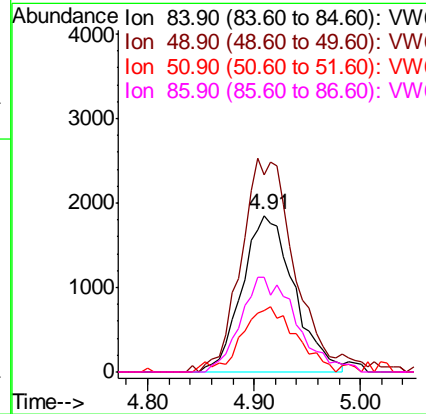
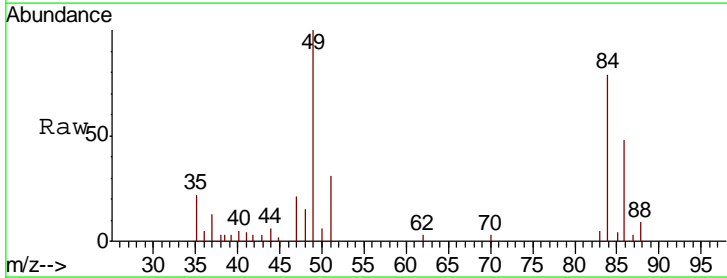
Instrument :
 MSVOA_W
 ClientSampled :
 MH-44-10.0-11.0

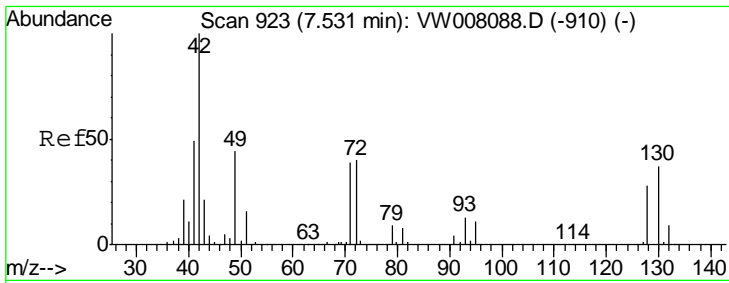
Tgt Ion	Resp	Lower	Upper
43	4509		
58	29.5	27.5	41.3



#20
 Methylene Chloride
 Concen: 6.285 ug/l
 RT: 4.91 min Scan# 493
 Delta R.T. 0.00 min
 Lab File: VW008134.D
 Acq: 10 Jan 2019 06:45

Tgt Ion	Resp	Lower	Upper
84	6323		
49	122.1	107.1	160.7
51	38.8	32.4	48.6
86	60.1	54.2	81.4

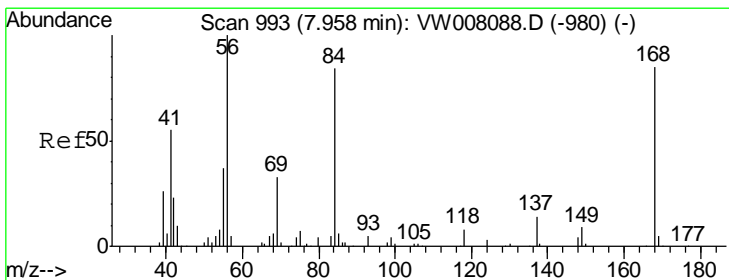
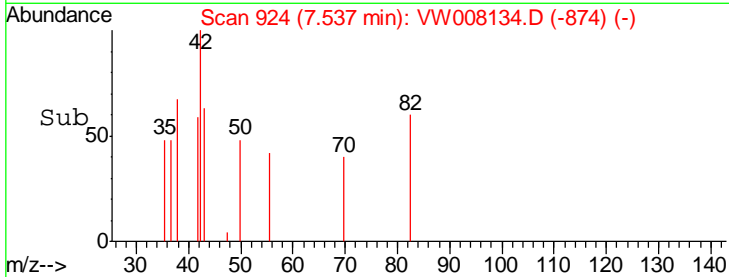
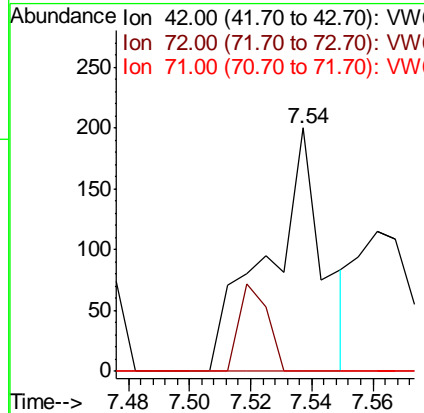
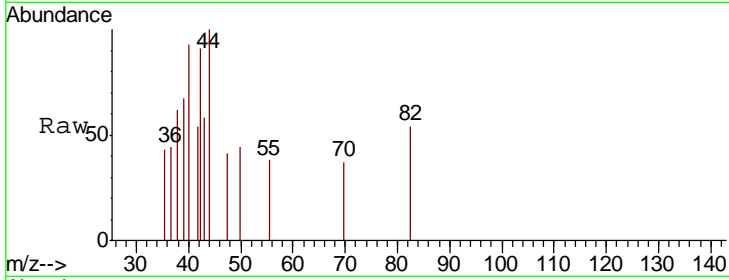




#29
 Tetrahydrofuran
 Concen: 2.206 ug/l
 RT: 7.54 min Scan# 924
 Delta R.T. 0.01 min
 Lab File: VW008134.D
 Acq: 10 Jan 2019 06:45

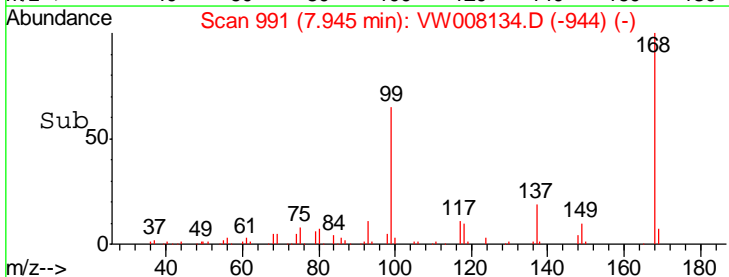
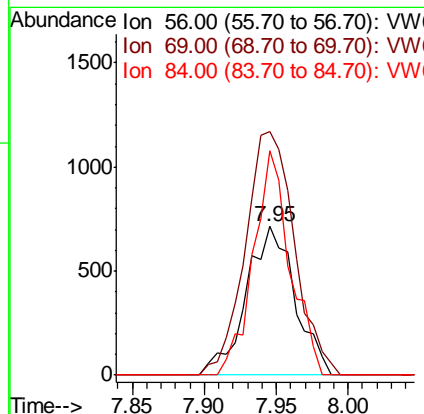
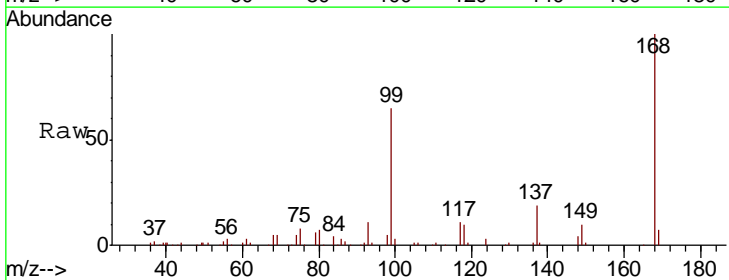
Instrument :
 MSVOA_W
 ClientSampleId :
 MH-44-10.0-11.0

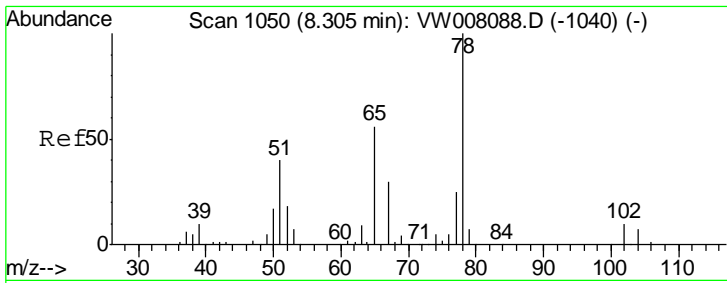
Tgt Ion	Resp	Lower	Upper
42	100		
72	18.3	32.4	48.6#
71	0.0	31.3	46.9#



#31
 Cyclohexane
 Concen: 1.297 ug/l
 RT: 7.95 min Scan# 991
 Delta R.T. -0.01 min
 Lab File: VW008134.D
 Acq: 10 Jan 2019 06:45

Tgt Ion	Resp	Lower	Upper
56	100		
69	164.1	26.2	39.4#
84	150.9	67.4	101.2#

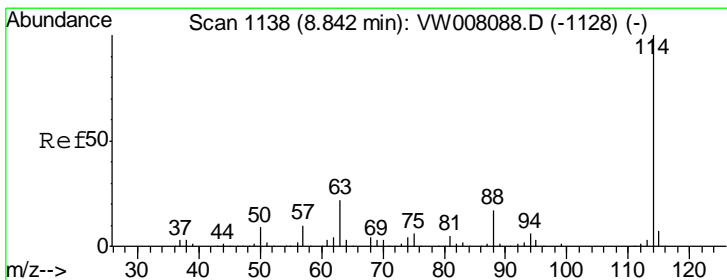
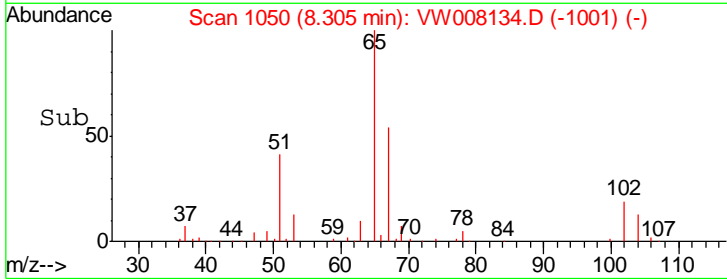
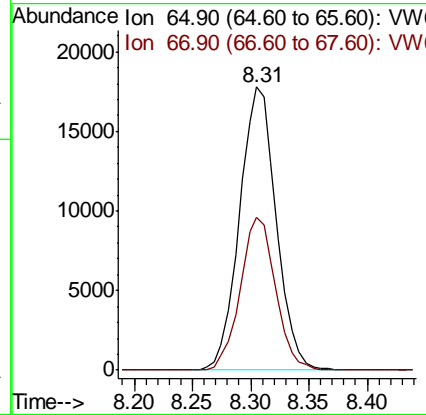
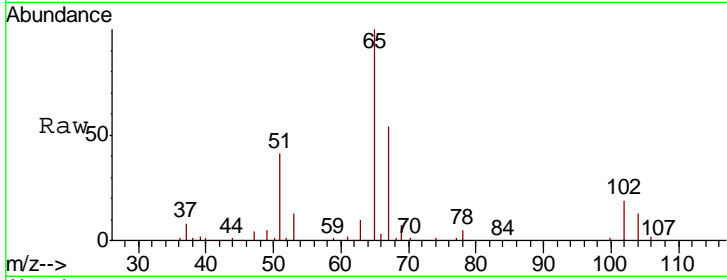




#33
 1,2-Dichloroethane-d4
 Concen: 63.688 ug/l
 RT: 8.31 min Scan# 1050
 Delta R.T. 0.00 min
 Lab File: VW008134.D
 Acq: 10 Jan 2019 06:45

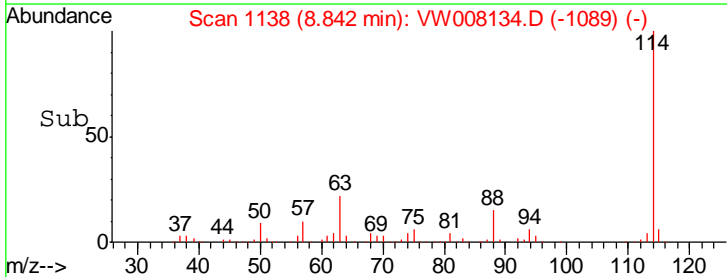
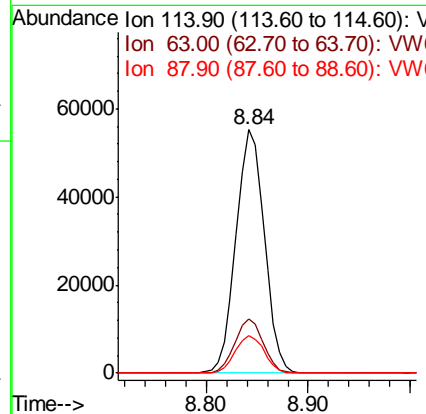
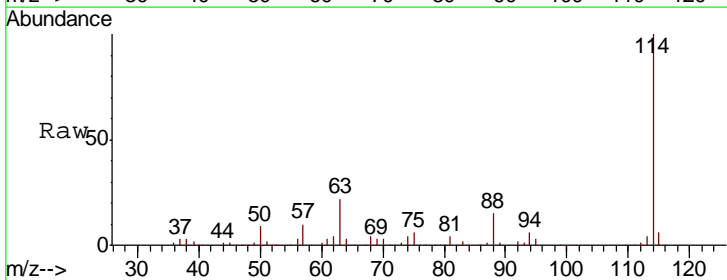
Instrument : MSVOA_W
 ClientSampled : MH-44-10.0-11.0

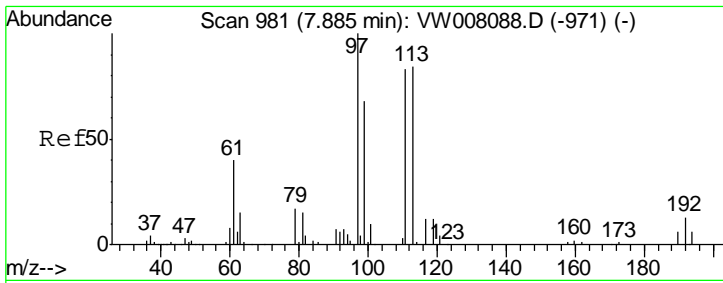
Tgt Ion	Resp	Lower	Upper
65	38994		
67	52.0	0.0	106.8



#34
 1,4-Difluorobenzene
 Concen: 50.000 ug/l
 RT: 8.84 min Scan# 1138
 Delta R.T. 0.00 min
 Lab File: VW008134.D
 Acq: 10 Jan 2019 06:45

Tgt Ion	Resp	Lower	Upper
114	106553		
63	22.5	0.0	43.4
88	15.2	0.0	33.4

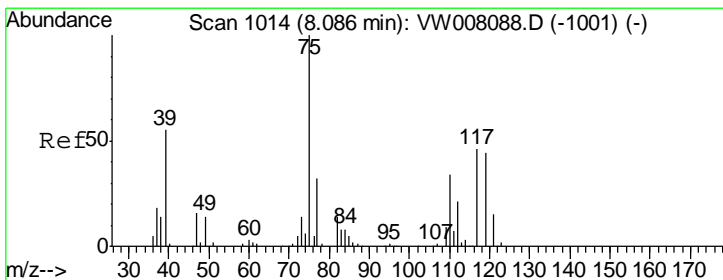
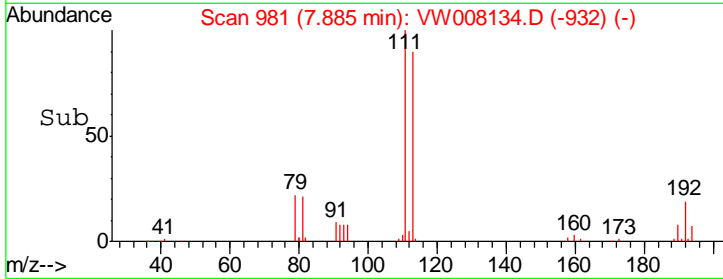
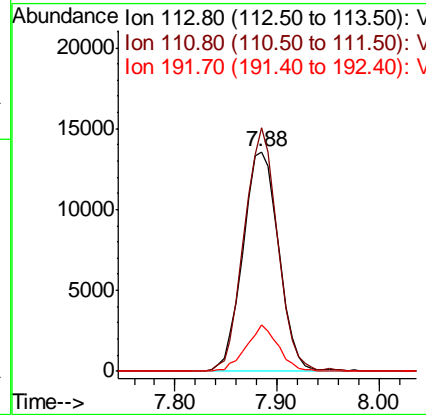
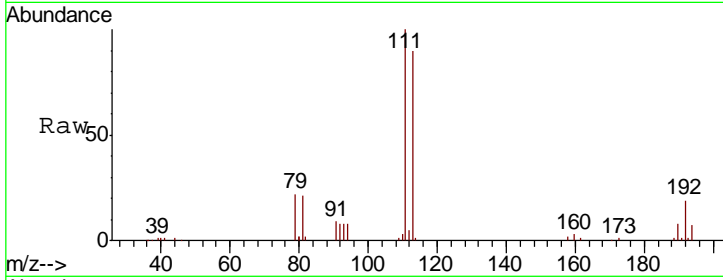




#35
 Dibromofluoromethane
 Concen: 53.394 ug/l
 RT: 7.88 min Scan# 981
 Delta R.T. 0.00 min
 Lab File: VW008134.D
 Acq: 10 Jan 2019 06:45

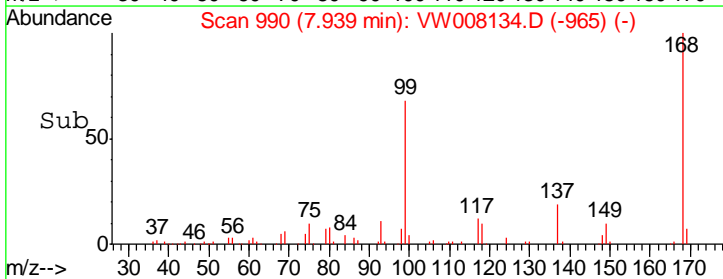
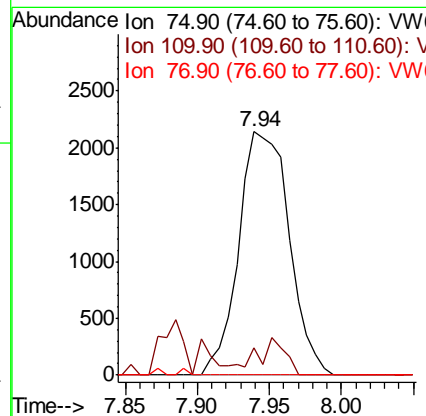
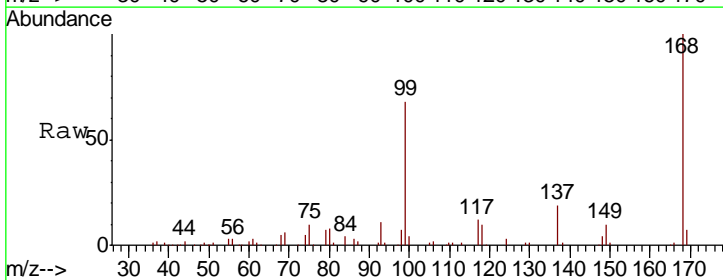
Instrument :
 MSVOA_W
 ClientSampled :
 MH-44-10.0-11.0

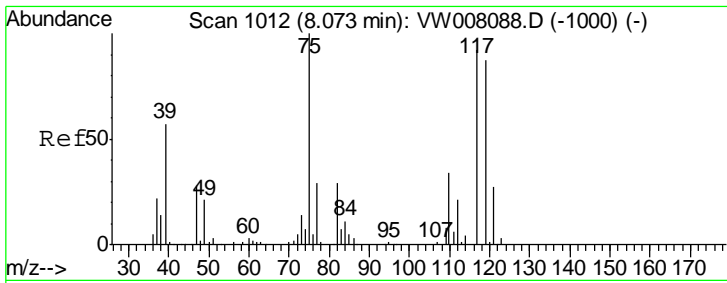
Tgt Ion	Resp	Lower	Upper
113	33182		
113	100		
111	103.5	81.8	122.8
192	18.7	12.8	19.2



#36
 1,1-Dichloropropene
 Concen: 4.728 ug/l
 RT: 7.94 min Scan# 990
 Delta R.T. -0.15 min
 Lab File: VW008134.D
 Acq: 10 Jan 2019 06:45

Tgt Ion	Resp	Lower	Upper
75	5189		
75	100		
110	8.7	17.1	51.3#
77	0.0	25.5	38.3#

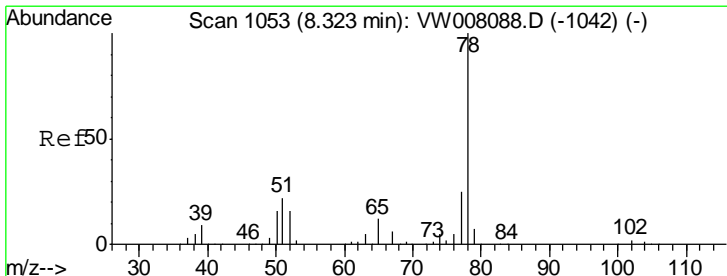
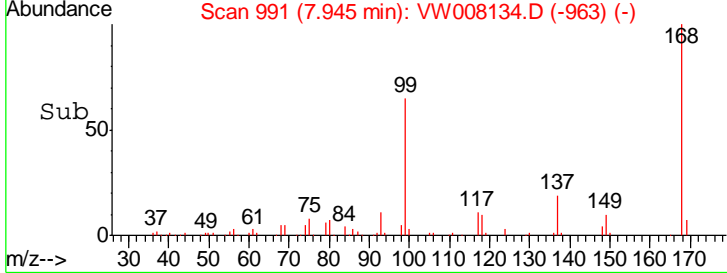
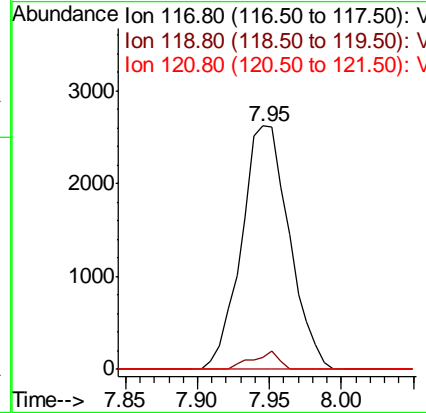
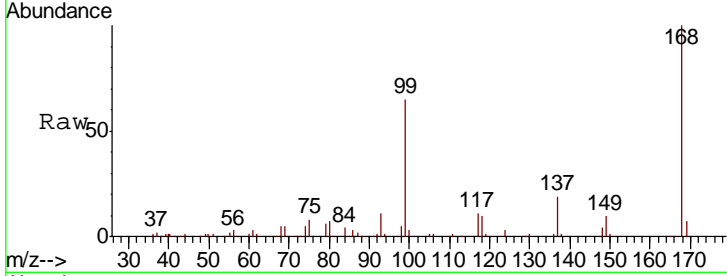




#38
 Carbon Tetrachloride
 Concen: 5.988 ug/l
 RT: 7.95 min Scan# 991
 Delta R.T. -0.13 min
 Lab File: VW008134.D
 Acq: 10 Jan 2019 06:45

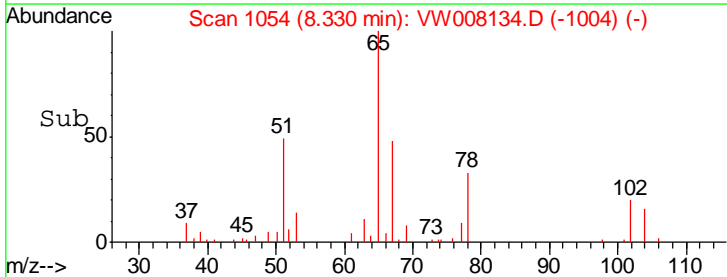
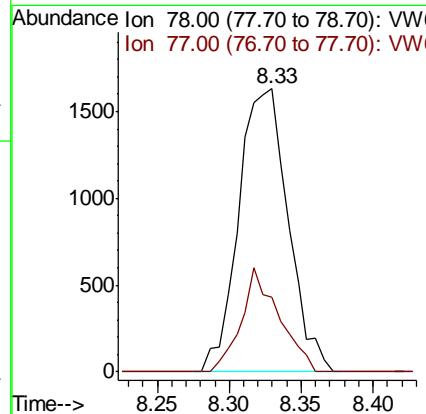
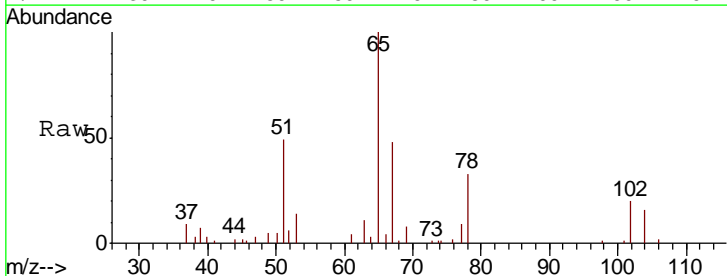
Instrument :
 MSVOA_W
 ClientSampled :
 MH-44-10.0-11.0

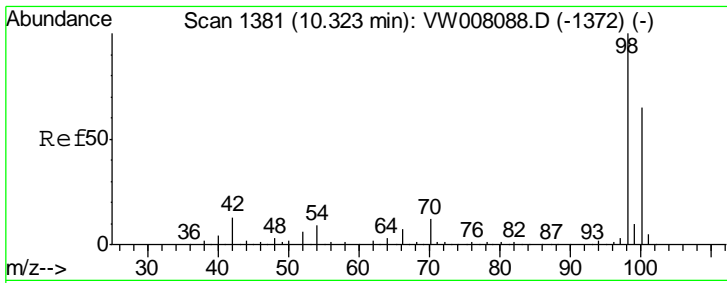
Tgt Ion	Resp	Lower	Upper
117	100		
119	5.1	75.8	113.8#
121	0.0	23.7	35.5#



#40
 Benzene
 Concen: 1.306 ug/l
 RT: 8.33 min Scan# 1054
 Delta R.T. 0.01 min
 Lab File: VW008134.D
 Acq: 10 Jan 2019 06:45

Tgt Ion	Resp	Lower	Upper
78	100		
77	26.2	20.2	30.4

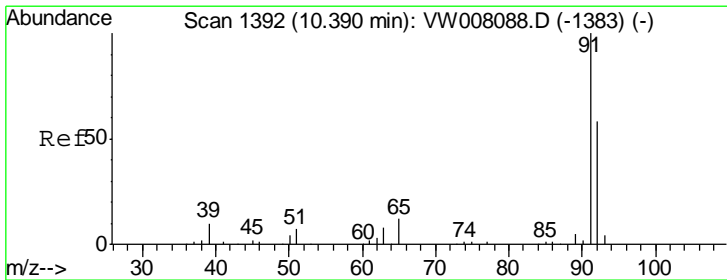
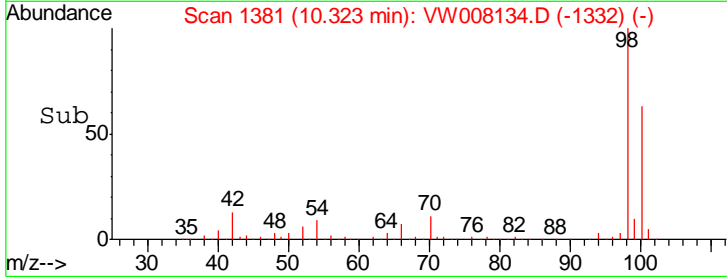
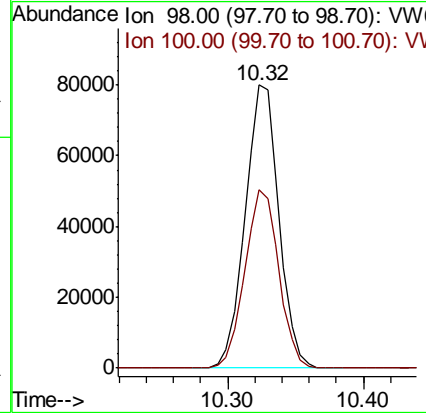
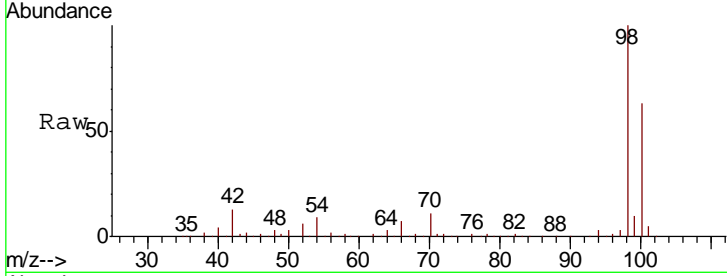




#50
 Toluene-d8
 Concen: 53.016 ug/l
 RT: 10.32 min Scan# 1381
 Delta R.T. 0.00 min
 Lab File: VW008134.D
 Acq: 10 Jan 2019 06:45

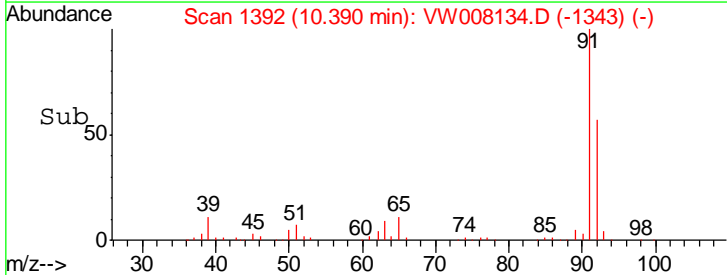
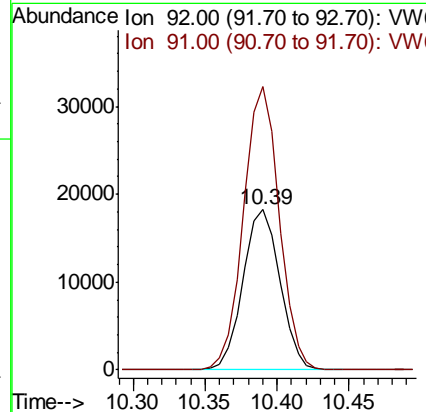
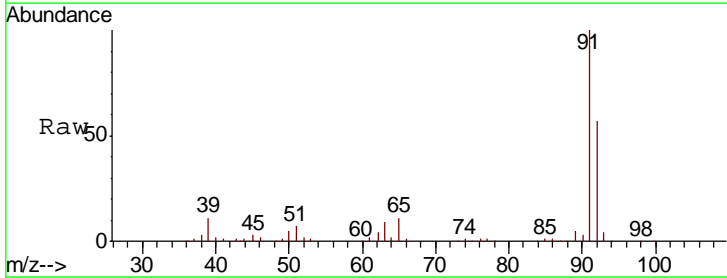
Instrument : MSVOA_W
 ClientSampled : MH-44-10.0-11.0

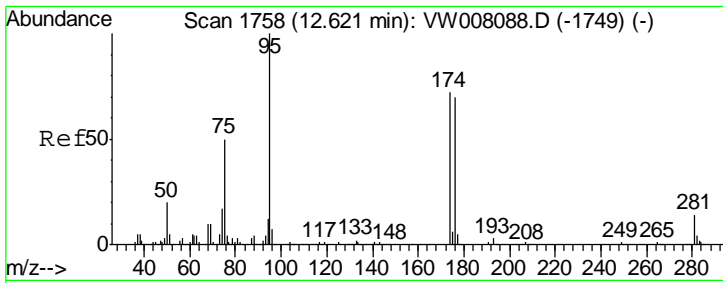
Tgt Ion: 98 Resp: 138259
 Ion Ratio Lower Upper
 98 100
 100 63.5 51.7 77.5



#52
 Toluene
 Concen: 17.120 ug/l
 RT: 10.39 min Scan# 1392
 Delta R.T. 0.00 min
 Lab File: VW008134.D
 Acq: 10 Jan 2019 06:45

Tgt Ion: 92 Resp: 32550
 Ion Ratio Lower Upper
 92 100
 91 170.3 137.0 205.4



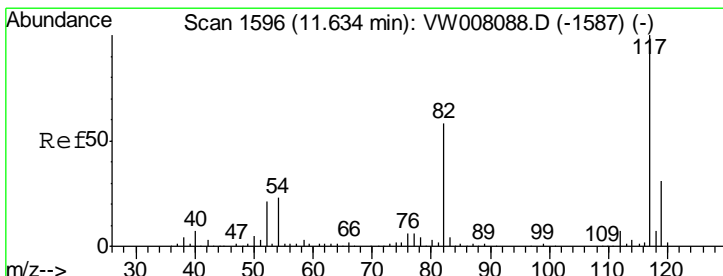
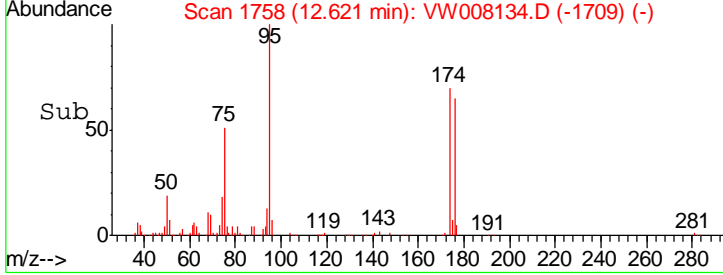
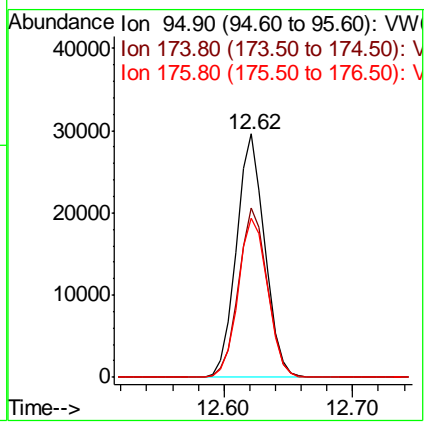
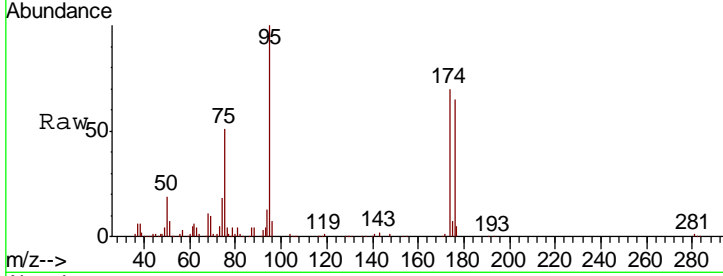


#62
 4-Bromofluorobenzene
 Concen: 48.240 ug/l
 RT: 12.62 min Scan# 1758
 Delta R.T. 0.00 min
 Lab File: VW008134.D
 Acq: 10 Jan 2019 06:45

Instrument : MSVOA_W
 ClientSampled : MH-44-10.0-11.0

Tgt Ion: 95 Resp: 45101

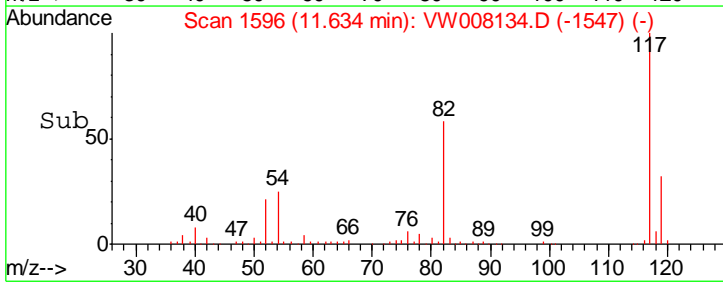
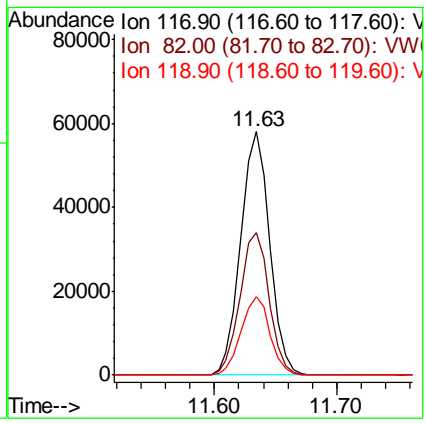
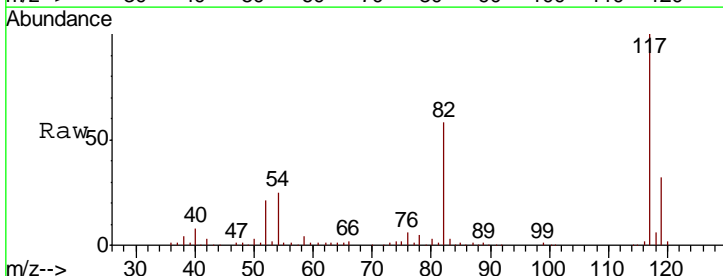
Ion	Ratio	Lower	Upper
95	100		
174	70.6	0.0	143.0
176	67.7	0.0	140.2

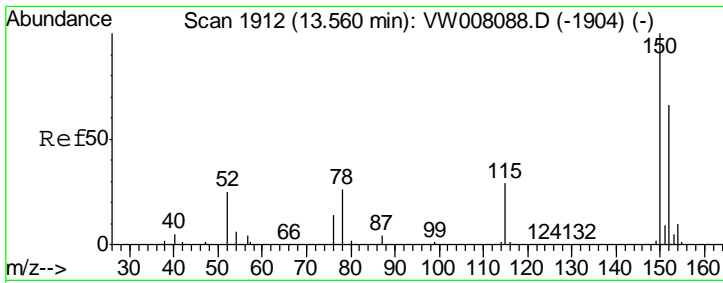


#63
 Chlorobenzene-d5
 Concen: 50.000 ug/l
 RT: 11.63 min Scan# 1596
 Delta R.T. 0.00 min
 Lab File: VW008134.D
 Acq: 10 Jan 2019 06:45

Tgt Ion: 117 Resp: 95552

Ion	Ratio	Lower	Upper
117	100		
82	58.4	46.4	69.6
119	32.0	24.7	37.1

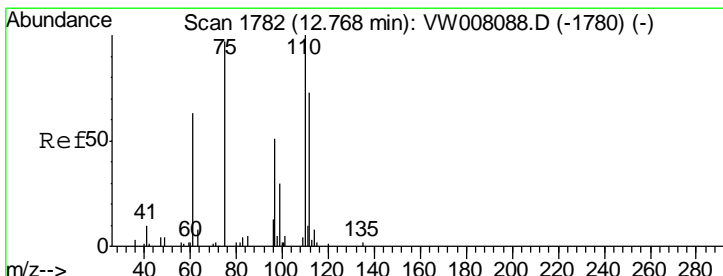
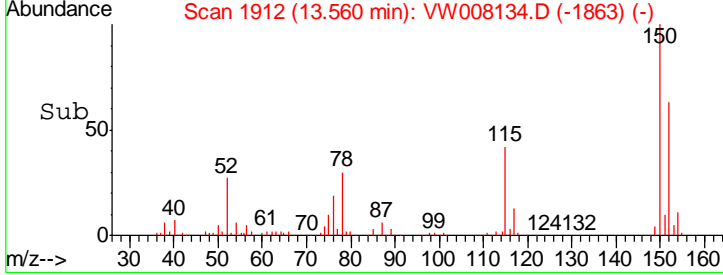
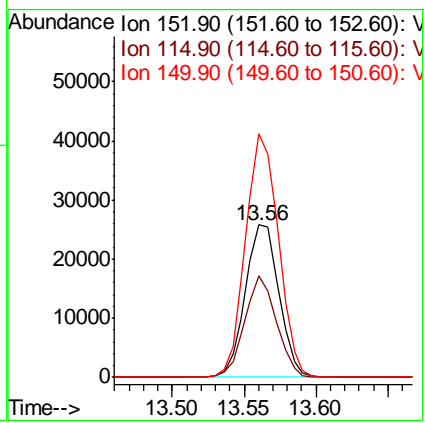
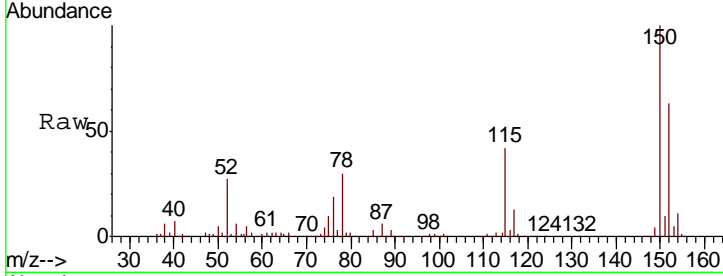




#72
 1,4-Dichlorobenzene-d4
 Concen: 50.000 ug/l
 RT: 13.56 min Scan# 1912
 Delta R.T. 0.00 min
 Lab File: VW008134.D
 Acq: 10 Jan 2019 06:45

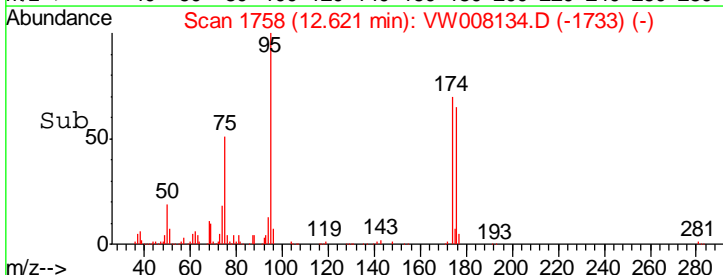
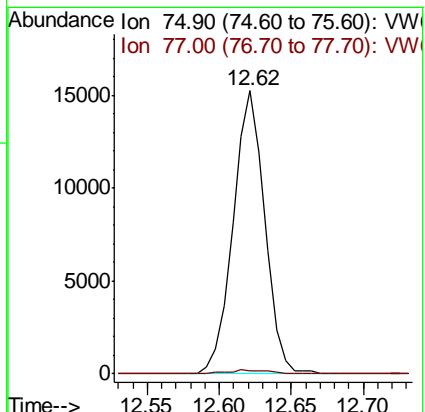
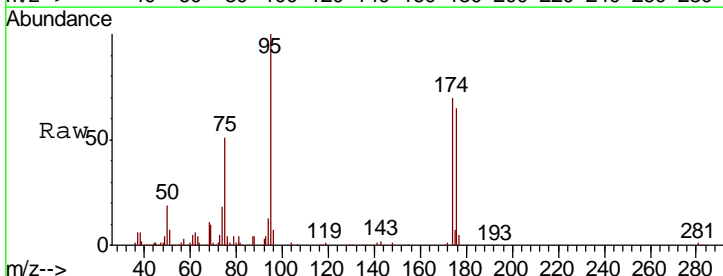
Instrument : MSVOA_W
 ClientSampled : MH-44-10.0-11.0

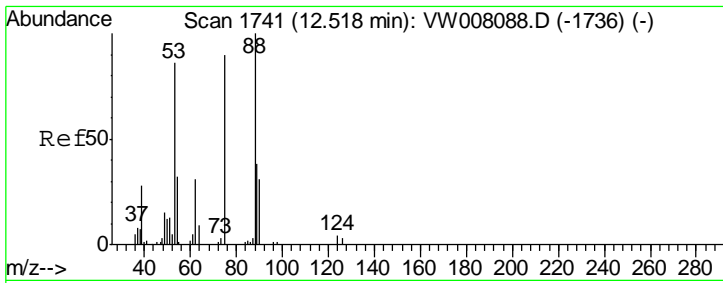
Tgt Ion	Resp	Lower	Upper
152	41778		
115	62.8	30.8	92.4
150	155.8	0.0	350.2



#76
 1,2,3-Trichloropropane
 Concen: 61.192 ug/l
 RT: 12.62 min Scan# 1758
 Delta R.T. -0.15 min
 Lab File: VW008134.D
 Acq: 10 Jan 2019 06:45

Tgt Ion	Resp	Lower	Upper
75	23305		
75	100		
77	1.7	179.4	538.2#





#81
 trans-1,4-Dichloro-2-butene
 Concen: 142.497 ug/l
 RT: 12.62 min Scan# 1758
 Delta R.T. 0.10 min
 Lab File: VW008134.D
 Acq: 10 Jan 2019 06:45

Instrument :
 MSVOA_W
 ClientSampleId :
 MH-444-10.0-11.0

Tgt Ion	Resp	Lower	Upper
75	100		
53	0.6	78.8	118.2#
89	0.0	35.4	53.2#

