

Data File : VW008146.D
 Acq On : 10 Jan 2019 14:08
 Operator : SY/AP
 Sample : K1074-04RE
 Misc : 4.92G/5ML/MSVOA_W/SOIL
 ALS Vial : 6 Sample Multiplier: 1

Instrument :
 MSVOA_W
 ClientSampleId :
 W12-2RE

Quant Time: Jan 11 05:10:06 2019
 Quant Method : Z:\VOASRV\HPCHEM1\MSVOA_W\METHOD\82W010819S.M
 Quant Title : SW846 8260
 QLast Update : Wed Jan 09 04:40:48 2019
 Response via : Initial Calibration

Internal Standards	R.T.	QIon	Response	Conc	Units	Dev(Min)
1) Pentafluorobenzene	7.95	168	62902	50.00	ug/l	0.00
34) 1,4-Difluorobenzene	8.84	114	118258	50.00	ug/l	0.00
63) Chlorobenzene-d5	11.63	117	108236	50.00	ug/l	0.00
72) 1,4-Dichlorobenzene-d4	13.56	152	47534	50.00	ug/l	0.00

System Monitoring Compounds

33) 1,2-Dichloroethane-d4	8.30	65	42794	60.53	ug/l	0.00
Spiked Amount	50.000		Recovery	=	121.06%	
35) Dibromofluoromethane	7.88	113	38303	55.53	ug/l	0.00
Spiked Amount	50.000		Recovery	=	111.06%	
50) Toluene-d8	10.32	98	155248	53.64	ug/l	0.00
Spiked Amount	50.000		Recovery	=	107.28%	
62) 4-Bromofluorobenzene	12.62	95	51489	49.62	ug/l	0.00
Spiked Amount	50.000		Recovery	=	99.24%	

Target Compounds

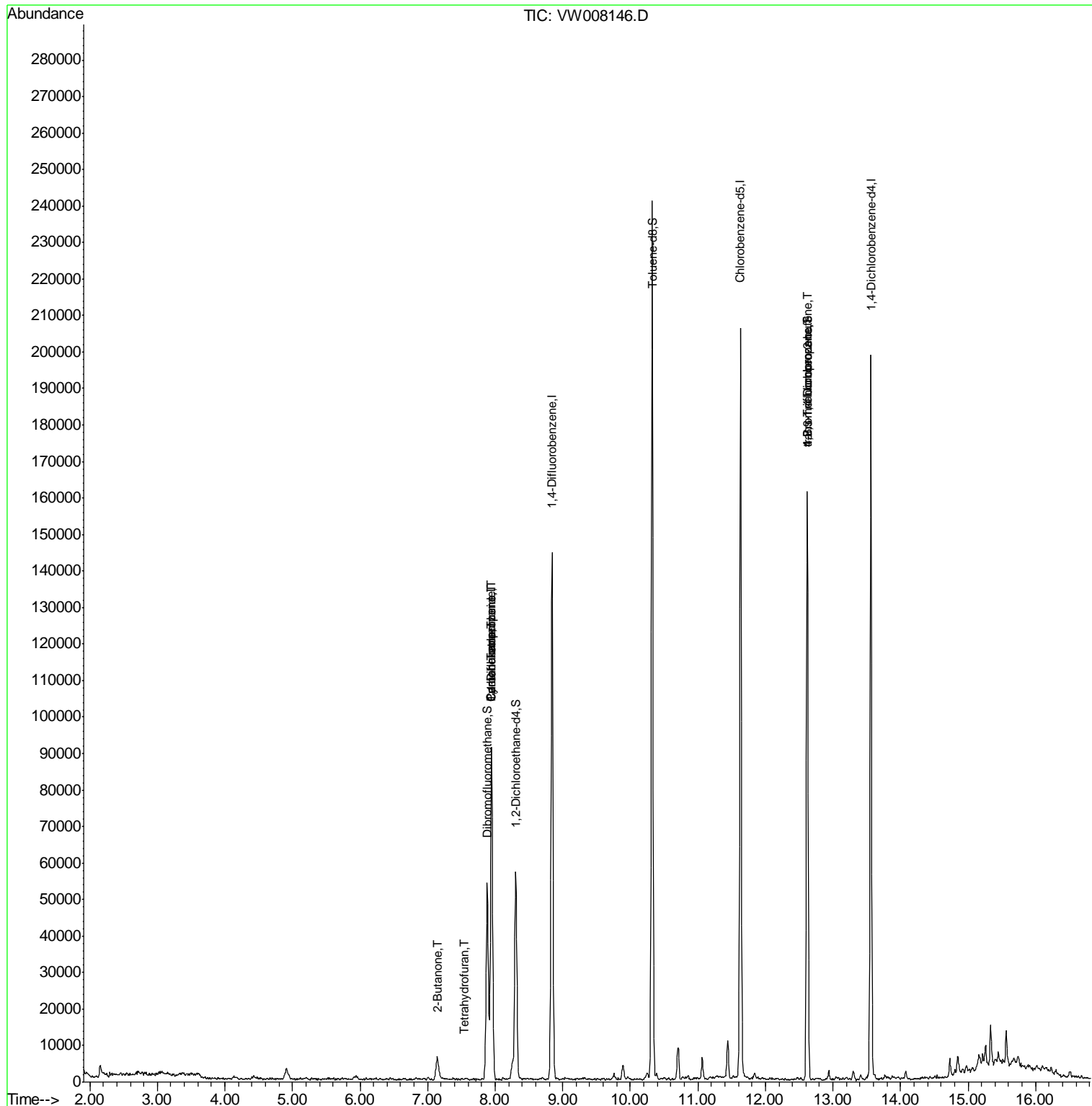
						Qvalue
11) Tert butyl alcohol	5.21	59	105	Below Cal	#	100
16) Acetone	4.12	43	1605	Below Cal	#	86
20) Methylene Chloride	4.91	84	1840	Below Cal	#	88
25) 2-Butanone	7.15	43	488	2.481	ug/l #	49
29) Tetrahydrofuran	7.54	42	283	2.154	ug/l #	53
31) Cyclohexane	7.94	56	1780	1.196	ug/l #	1
36) 1,1-Dichloropropene	7.95	75	5573	4.575	ug/l #	52
38) Carbon Tetrachloride	7.95	117	6957	6.240	ug/l #	16
76) 1,2,3-Trichloropropane	12.62	75	25965	59.921	ug/l #	1
81) trans-1,4-Dichloro-2-buten	12.62	75	25965	139.537	ug/l #	10

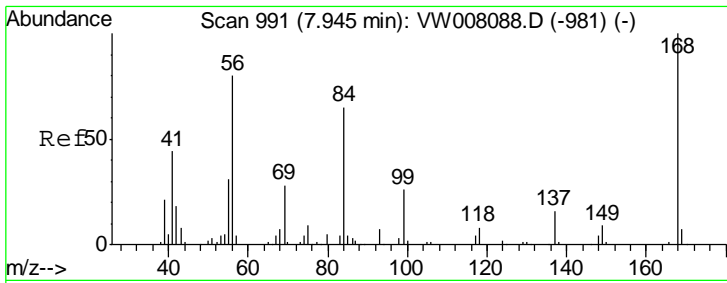
(#) = qualifier out of range (m) = manual integration (+) = signals summed

Data File : VW008146.D
Acq On : 10 Jan 2019 14:08
Operator : SY/AP
Sample : K1074-04RE
Misc : 4.92G/5ML/MSVOA_W/SOIL
ALS Vial : 6 Sample Multiplier: 1

Instrument :
MSVOA_W
ClientSampled :
W12-2RE

Quant Time: Jan 11 05:10:06 2019
Quant Method : Z:\VOASRV\HPCHEM1\MSVOA_W\METHOD\82W010819S.M
Quant Title : SW846 8260
QLast Update : Wed Jan 09 04:40:48 2019
Response via : Initial Calibration

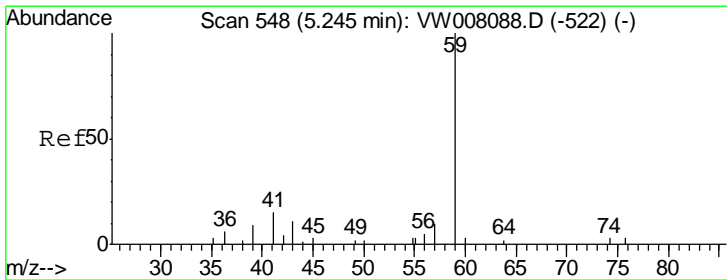
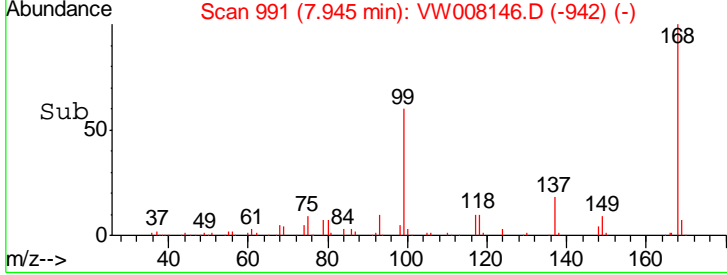
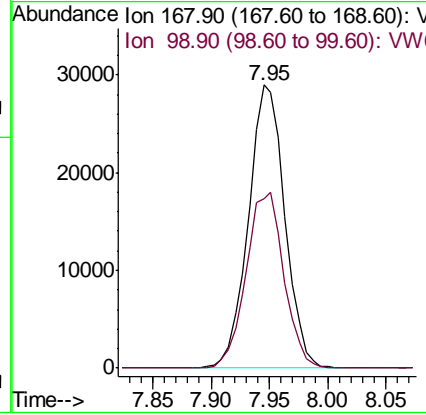
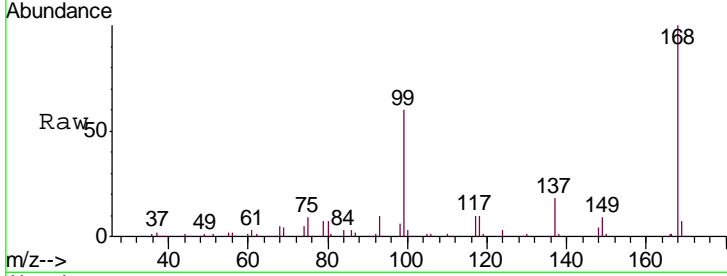




#1
 Pentafluorobenzene
 Concen: 50.000 ug/l
 RT: 7.95 min Scan# 991
 Delta R.T. -0.00 min
 Lab File: VW008146.D
 Acq: 10 Jan 2019 14:08

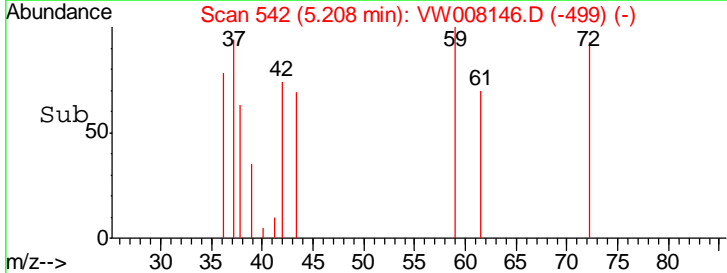
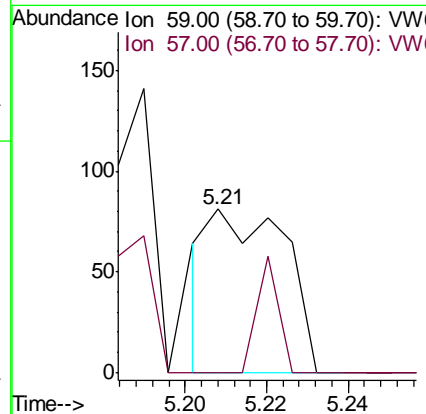
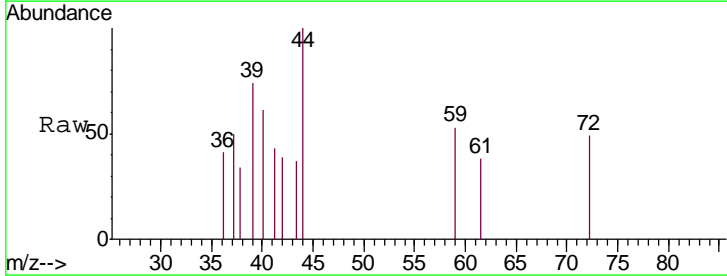
Instrument :
 MSVOA_W
 ClientSampled :
 W12-2RE

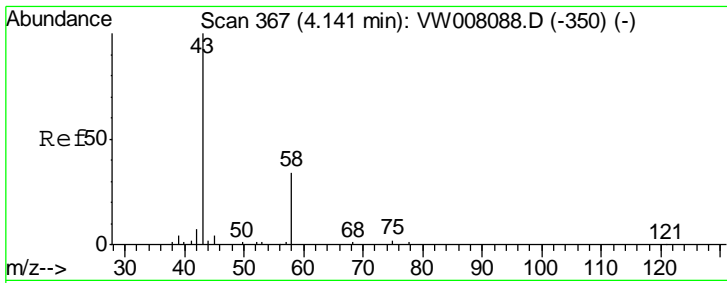
Tgt Ion: 168 Resp: 62902
 Ion Ratio Lower Upper
 168 100
 99 59.7 52.6 78.8



#11
 Tert butyl alcohol
 Concen: Below Cal
 RT: 5.21 min Scan# 542
 Delta R.T. -0.04 min
 Lab File: VW008146.D
 Acq: 10 Jan 2019 14:08

Tgt Ion: 59 Resp: 105
 Ion Ratio Lower Upper
 59 100
 57 20.0 0.0 0.0#

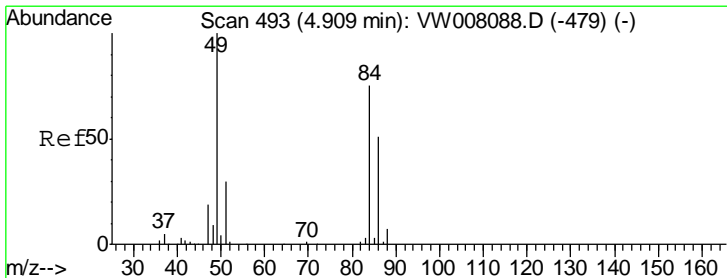
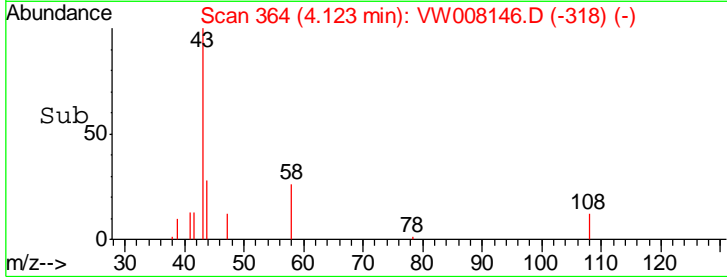
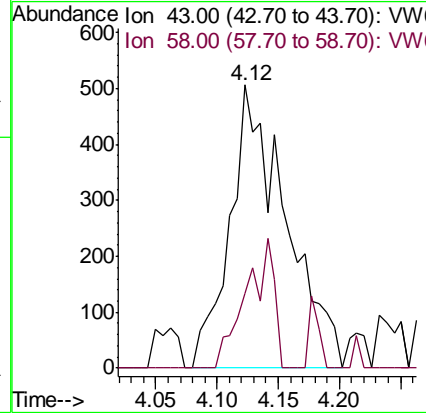
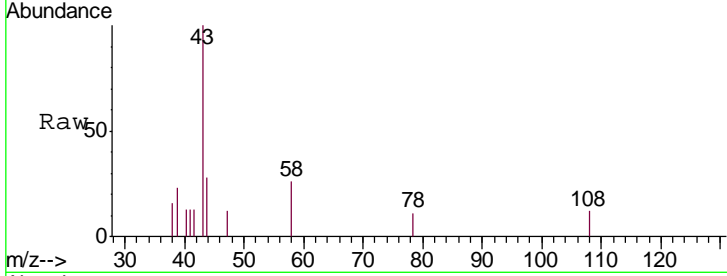




#16
 Acetone
 Concen: Below Cal
 RT: 4.12 min Scan# 364
 Delta R.T. -0.02 min
 Lab File: VW008146.D
 Acq: 10 Jan 2019 14:08

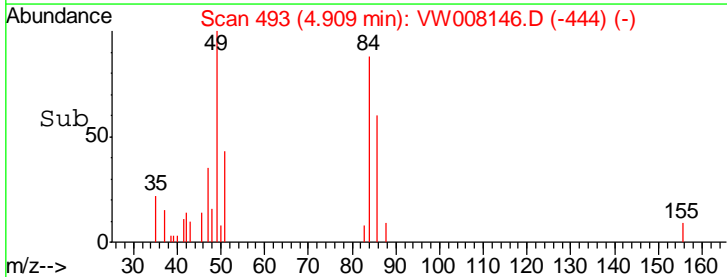
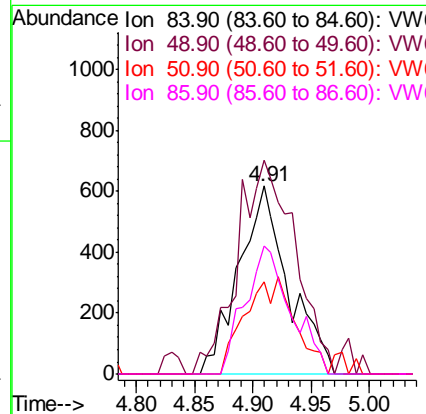
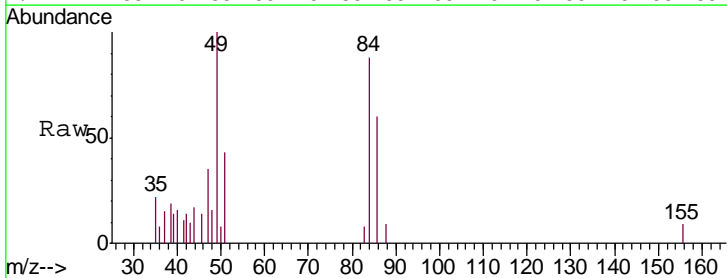
Instrument :
 MSVOA_W
 ClientSampled :
 W12-2RE

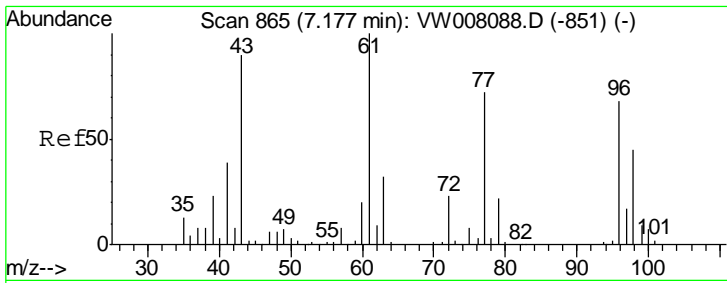
Tgt Ion: 43 Resp: 1605
 Ion Ratio Lower Upper
 43 100
 58 26.5 27.5 41.3#



#20
 Methylene Chloride
 Concen: Below Cal
 RT: 4.91 min Scan# 493
 Delta R.T. 0.00 min
 Lab File: VW008146.D
 Acq: 10 Jan 2019 14:08

Tgt Ion: 84 Resp: 1840
 Ion Ratio Lower Upper
 84 100
 49 113.8 107.1 160.7
 51 48.9 32.4 48.6#
 86 68.5 54.2 81.4

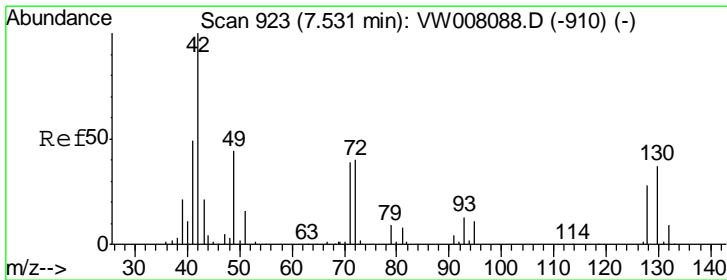
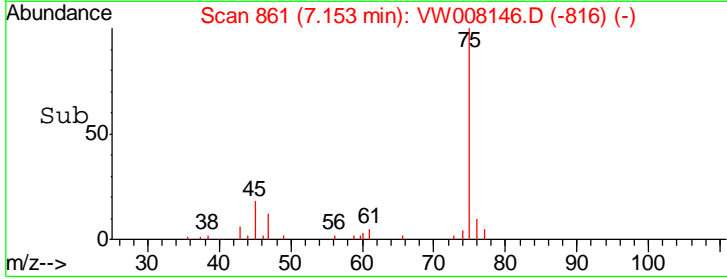
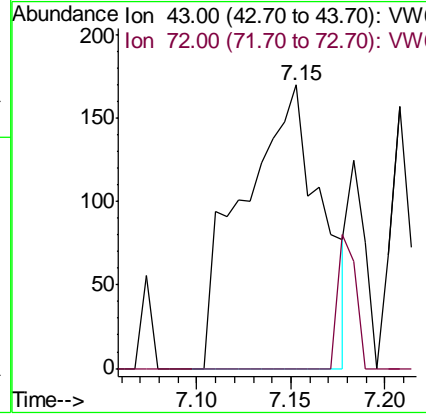
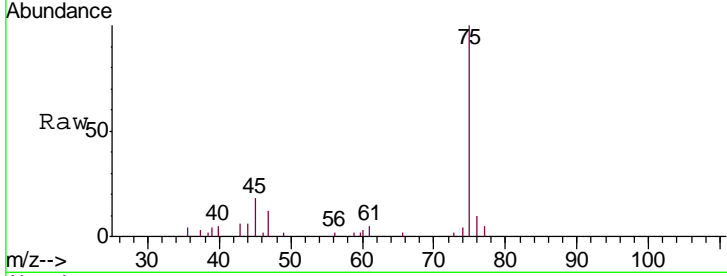




#25
 2-Butanone
 Concen: 2.481 ug/l
 RT: 7.15 min Scan# 861
 Delta R.T. -0.02 min
 Lab File: VW008146.D
 Acq: 10 Jan 2019 14:08

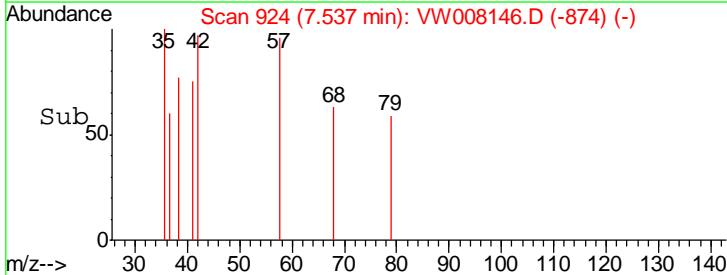
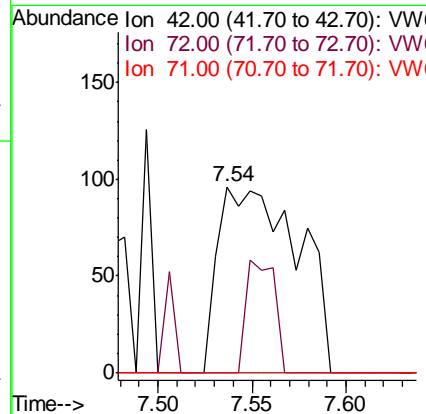
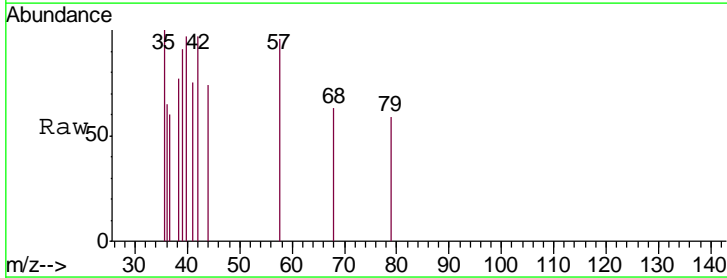
Instrument :
 MSVOA_W
 ClientSampled :
 W12-2RE

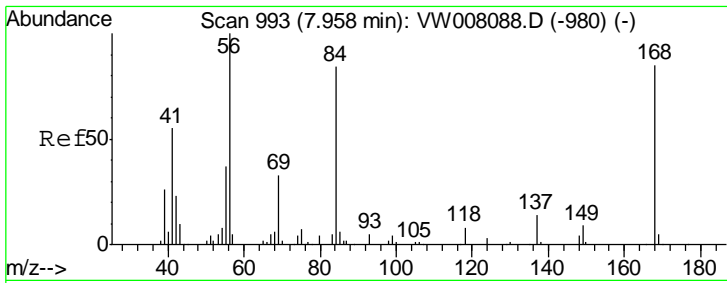
Tgt Ion: 43 Resp: 488
 Ion Ratio Lower Upper
 43 100
 72 0.0 20.5 30.7#



#29
 Tetrahydrofuran
 Concen: 2.154 ug/l
 RT: 7.54 min Scan# 924
 Delta R.T. 0.01 min
 Lab File: VW008146.D
 Acq: 10 Jan 2019 14:08

Tgt Ion: 42 Resp: 283
 Ion Ratio Lower Upper
 42 100
 72 21.2 32.4 48.6#
 71 0.0 31.3 46.9#

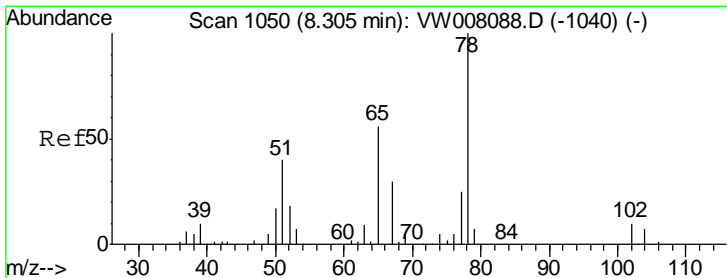
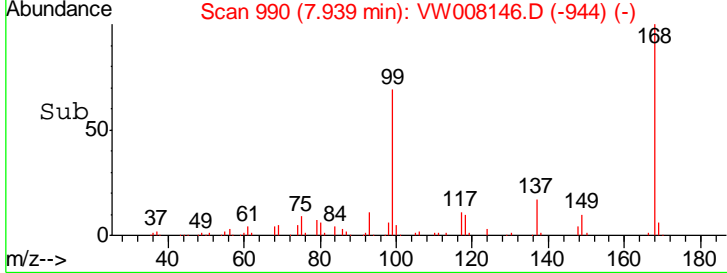
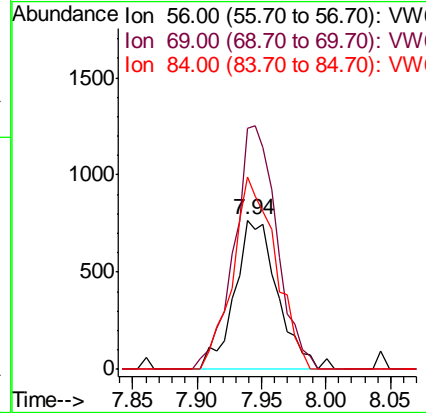
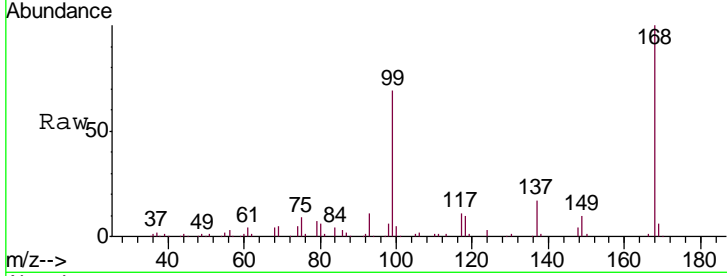




#31
 Cyclohexane
 Concen: 1.196 ug/l
 RT: 7.94 min Scan# 990
 Delta R.T. -0.02 min
 Lab File: VW008146.D
 Acq: 10 Jan 2019 14:08

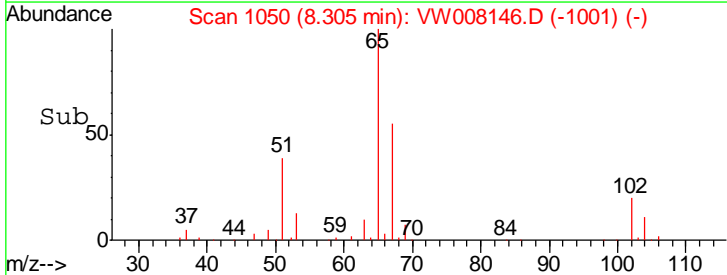
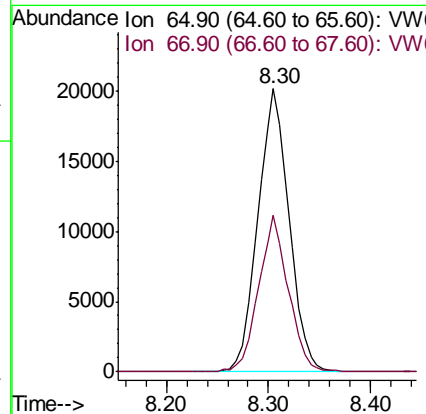
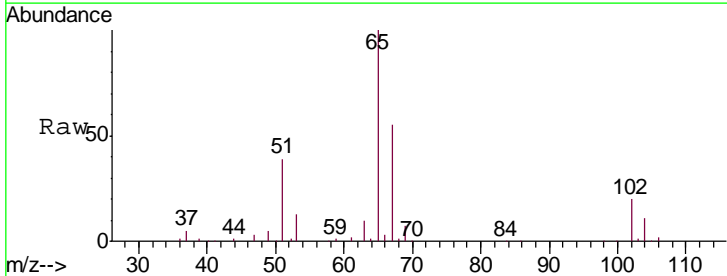
Instrument :
 MSVOA_W
 ClientSampled :
 W12-2RE

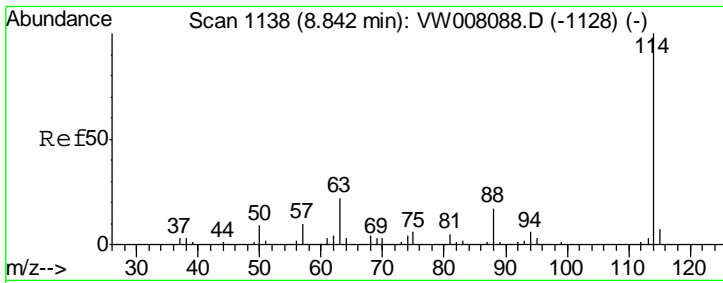
Tgt Ion	Resp	Lower	Upper
56	1780		
69	162.1	26.2	39.4#
84	129.0	67.4	101.2#



#33
 1,2-Dichloroethane-d4
 Concen: 60.532 ug/l
 RT: 8.30 min Scan# 1050
 Delta R.T. -0.00 min
 Lab File: VW008146.D
 Acq: 10 Jan 2019 14:08

Tgt Ion	Resp	Lower	Upper
65	42794		
67	52.9	0.0	106.8

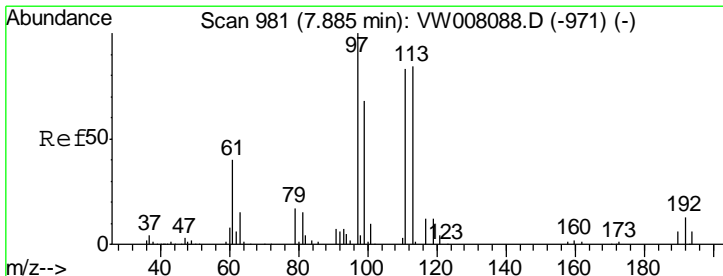
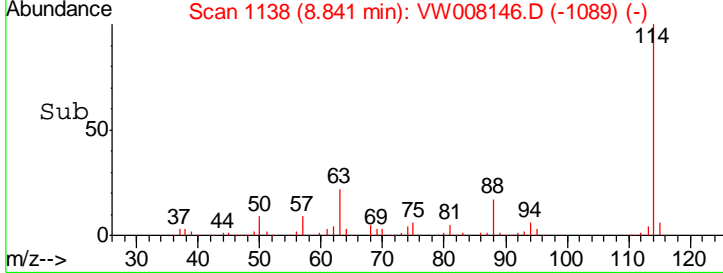
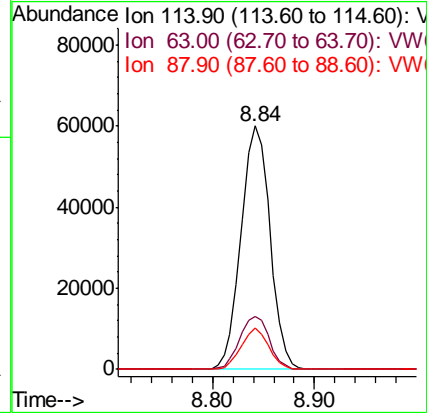
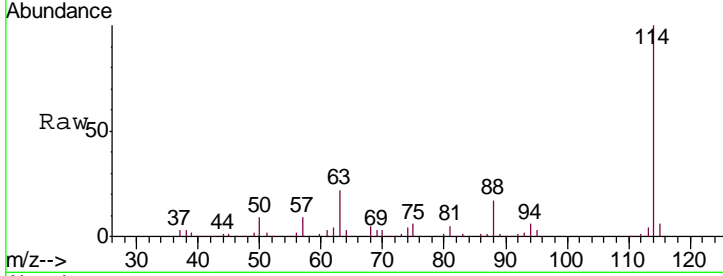




#34
 1,4-Difluorobenzene
 Concen: 50.000 ug/l
 RT: 8.84 min Scan# 1138
 Delta R.T. -0.00 min
 Lab File: VW008146.D
 Acq: 10 Jan 2019 14:08

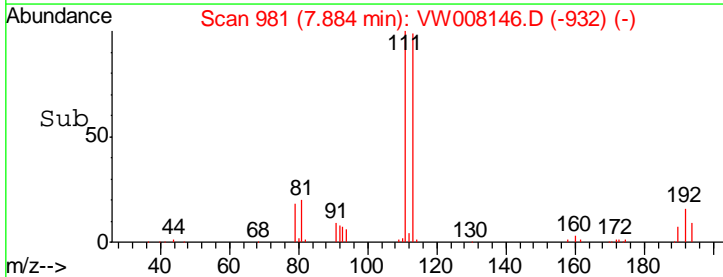
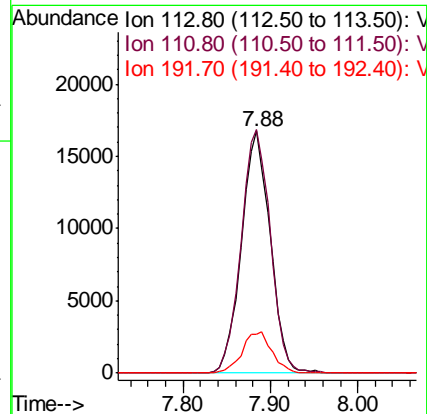
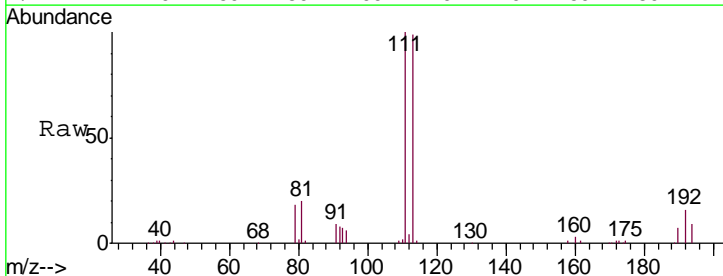
Instrument :
 MSVOA_W
 ClientSampled :
 W12-2RE

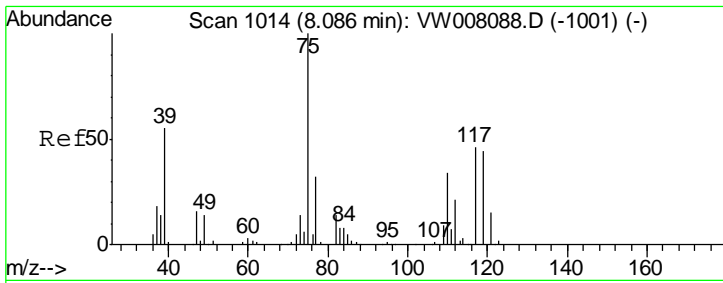
Tgt Ion	Resp	Lower	Upper
114	118258		
63	21.6	0.0	43.4
88	16.9	0.0	33.4



#35
 Dibromofluoromethane
 Concen: 55.534 ug/l
 RT: 7.88 min Scan# 981
 Delta R.T. -0.00 min
 Lab File: VW008146.D
 Acq: 10 Jan 2019 14:08

Tgt Ion	Resp	Lower	Upper
113	38303		
111	102.6	81.8	122.8
192	17.5	12.8	19.2

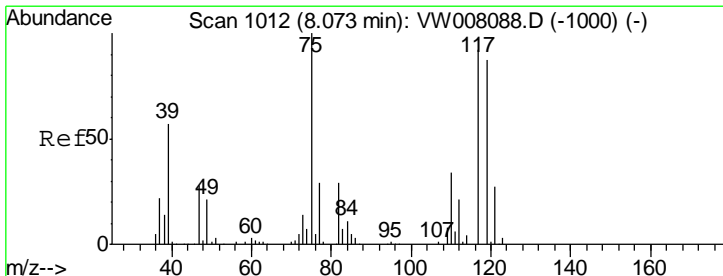
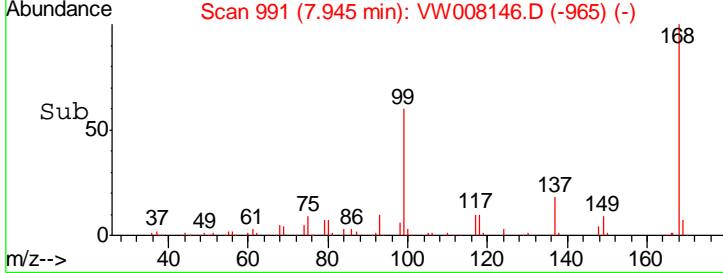
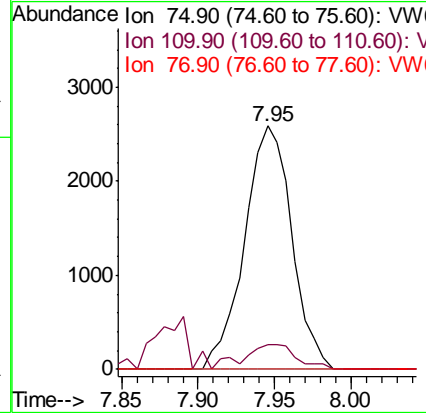
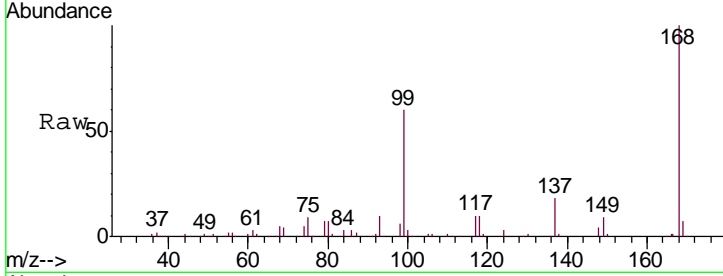




#36
 1,1-Dichloropropene
 Concen: 4.575 ug/l
 RT: 7.95 min Scan# 991
 Delta R.T. -0.14 min
 Lab File: VW008146.D
 Acq: 10 Jan 2019 14:08

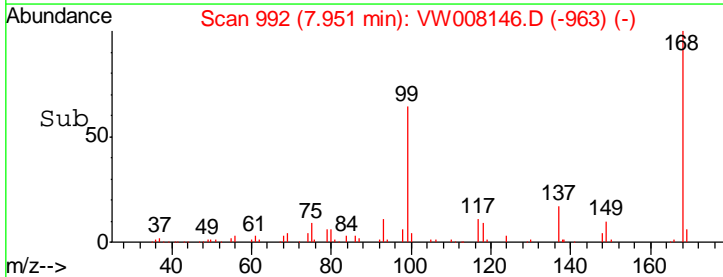
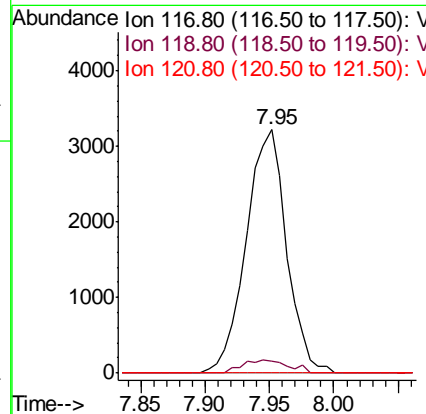
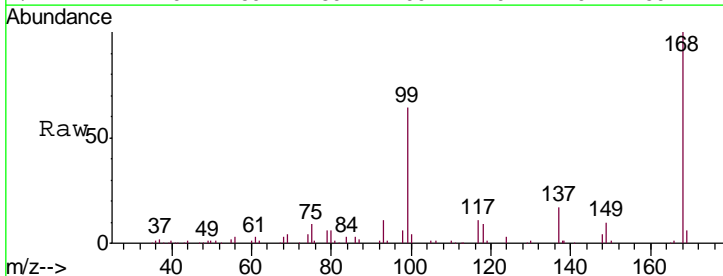
Instrument :
 MSVOA_W
 ClientSampled :
 W12-2RE

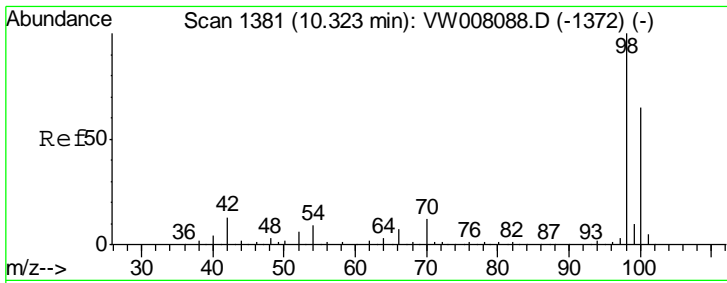
Tgt Ion	Resp	Lower	Upper
75	100		
110	11.5	17.1	51.3#
77	0.0	25.5	38.3#



#38
 Carbon Tetrachloride
 Concen: 6.240 ug/l
 RT: 7.95 min Scan# 992
 Delta R.T. -0.12 min
 Lab File: VW008146.D
 Acq: 10 Jan 2019 14:08

Tgt Ion	Resp	Lower	Upper
117	100		
119	4.8	75.8	113.8#
121	0.0	23.7	35.5#

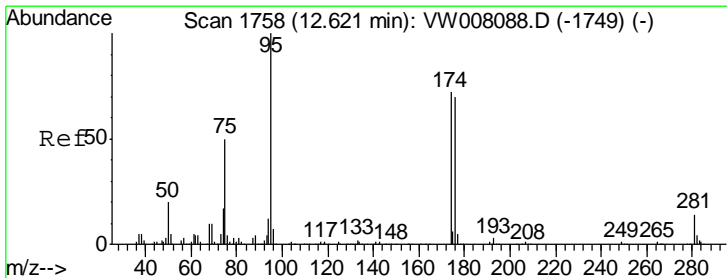
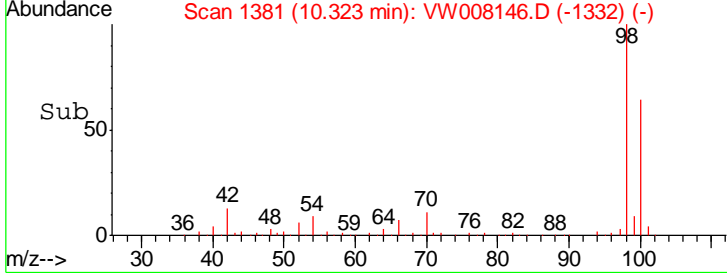
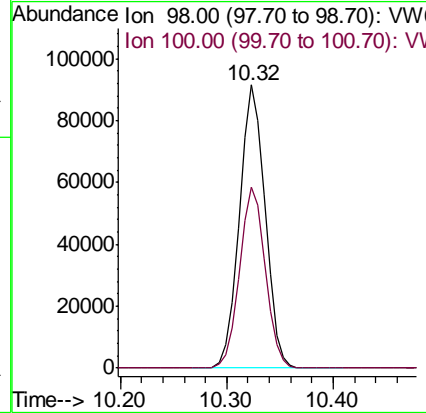
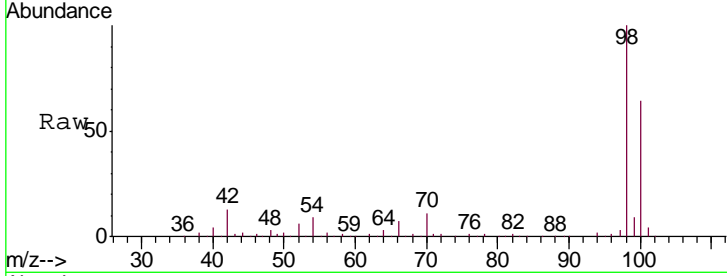




#50
 Toluene-d8
 Concen: 53.638 ug/l
 RT: 10.32 min Scan# 1381
 Delta R.T. -0.00 min
 Lab File: VW008146.D
 Acq: 10 Jan 2019 14:08

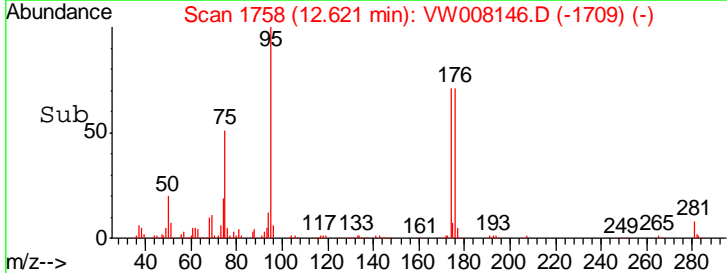
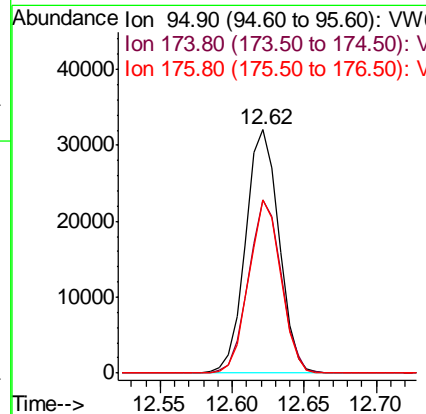
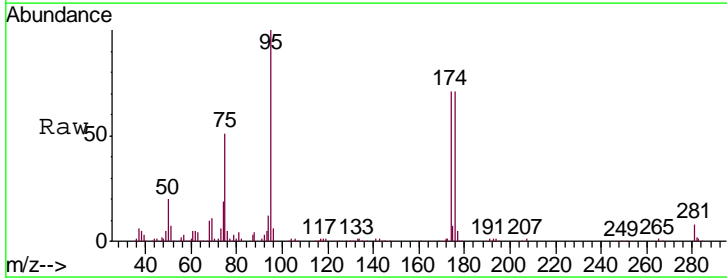
Instrument :
 MSVOA_W
 ClientSampled :
 W12-2RE

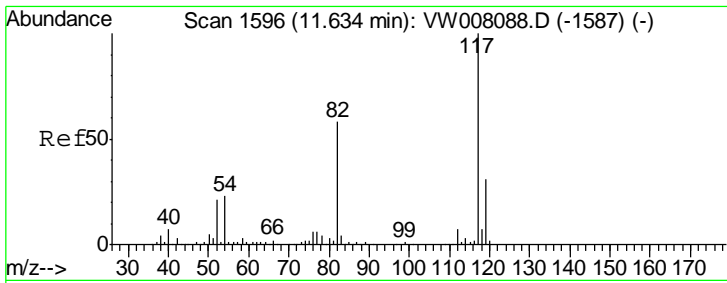
Tgt Ion: 98 Resp: 155248
 Ion Ratio Lower Upper
 98 100
 100 64.0 51.7 77.5



#62
 4-Bromofluorobenzene
 Concen: 49.622 ug/l
 RT: 12.62 min Scan# 1758
 Delta R.T. -0.00 min
 Lab File: VW008146.D
 Acq: 10 Jan 2019 14:08

Tgt Ion: 95 Resp: 51489
 Ion Ratio Lower Upper
 95 100
 174 69.5 0.0 143.0
 176 68.0 0.0 140.2

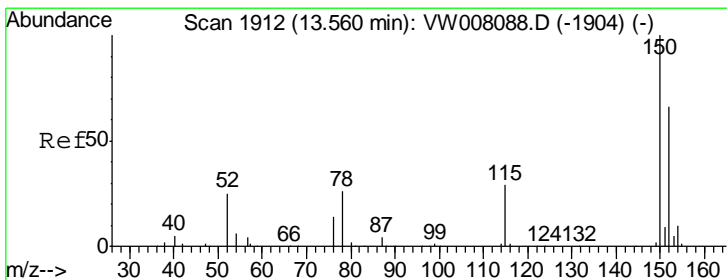
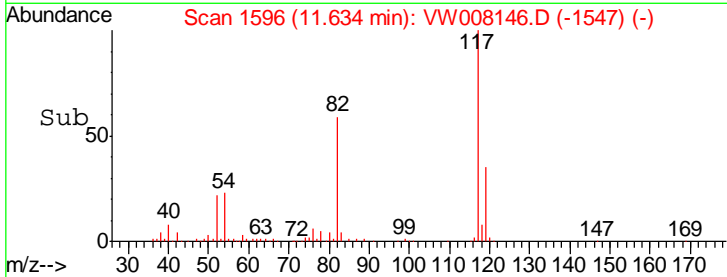
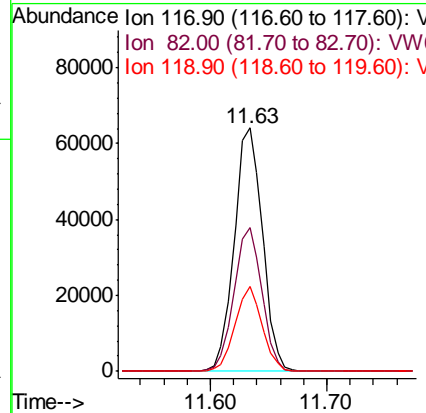
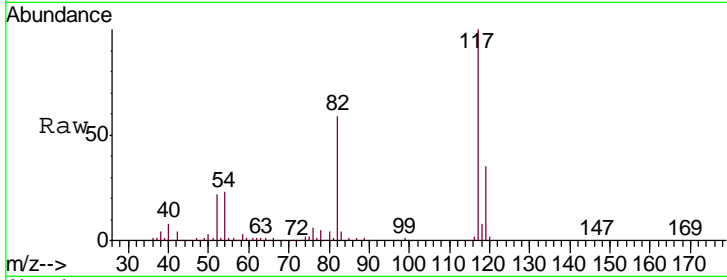




#63
 Chlorobenzene-d5
 Concen: 50.000 ug/l
 RT: 11.63 min Scan# 1596
 Delta R.T. -0.00 min
 Lab File: VW008146.D
 Acq: 10 Jan 2019 14:08

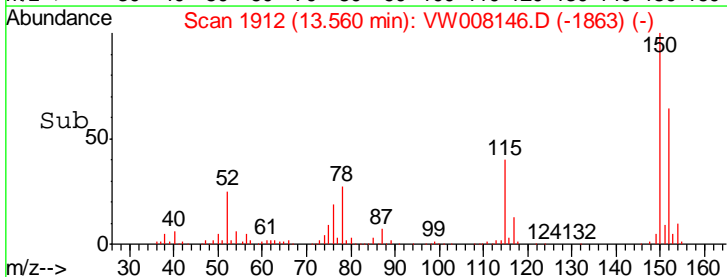
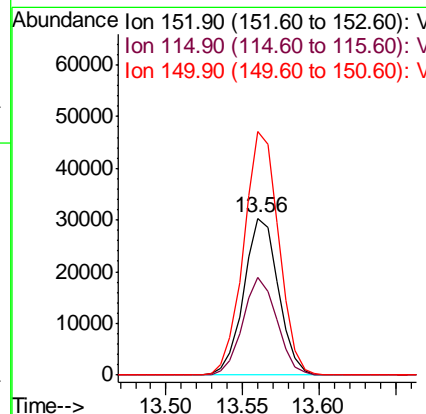
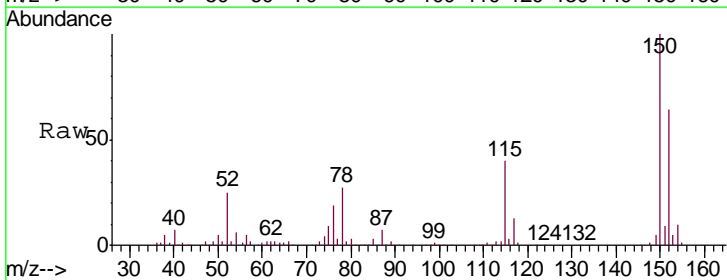
Instrument :
 MSVOA_W
 ClientSampled :
 W12-2RE

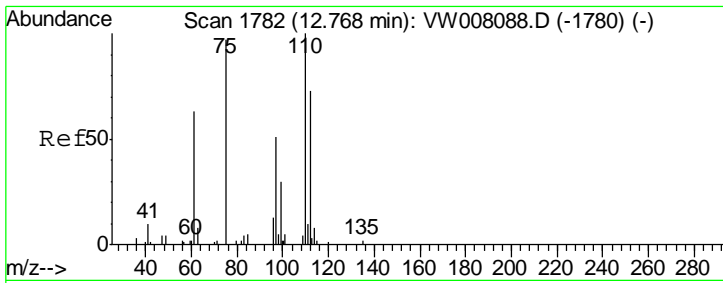
Tgt Ion	Resp	Lower	Upper
117	108236		
82	59.3	46.4	69.6
119	34.9	24.7	37.1



#72
 1,4-Dichlorobenzene-d4
 Concen: 50.000 ug/l
 RT: 13.56 min Scan# 1912
 Delta R.T. -0.00 min
 Lab File: VW008146.D
 Acq: 10 Jan 2019 14:08

Tgt Ion	Resp	Lower	Upper
152	47534		
115	61.6	30.8	92.4
150	157.5	0.0	350.2

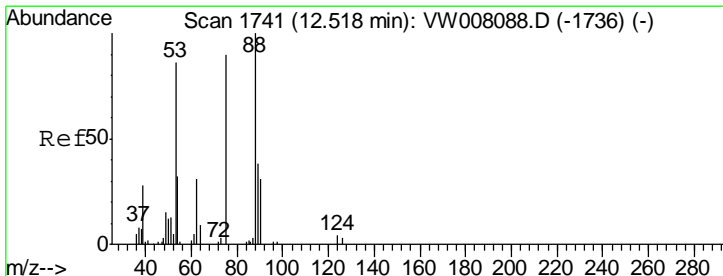
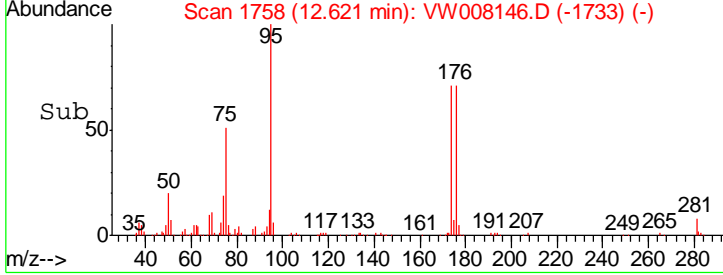
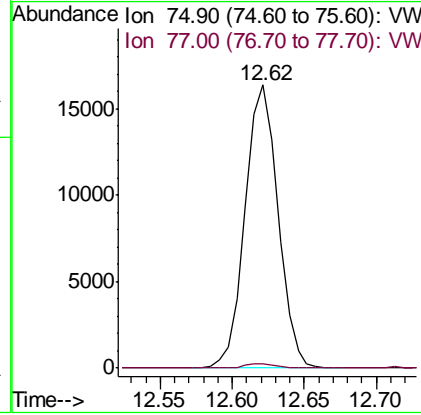
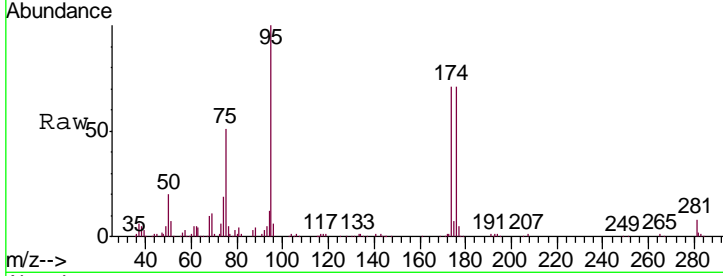




#76
 1,2,3-Trichloropropane
 Concen: 59.921 ug/l
 RT: 12.62 min Scan# 1758
 Delta R.T. -0.15 min
 Lab File: VW008146.D
 Acq: 10 Jan 2019 14:08

Instrument : MSVOA_W
 ClientSampled : W12-2RE

Tgt Ion: 75 Resp: 25965
 Ion Ratio Lower Upper
 75 100
 77 1.5 179.4 538.2#



#81
 trans-1,4-Dichloro-2-butene
 Concen: 139.537 ug/l
 RT: 12.62 min Scan# 1758
 Delta R.T. 0.10 min
 Lab File: VW008146.D
 Acq: 10 Jan 2019 14:08

Tgt Ion: 75 Resp: 25965
 Ion Ratio Lower Upper
 75 100
 53 0.2 78.8 118.2#
 89 0.1 35.4 53.2#

