

Data File : VW008178.D
 Acq On : 11 Jan 2019 06:00
 Operator : SY/AP
 Sample : K1099-09
 Misc : 4.85G/5ML/MSVOA_W/SOIL
 ALS Vial : 42 Sample Multiplier: 1

Instrument :
 MSVOA_W
 ClientSampled :
 TP-17-14

Quant Time: Jan 11 07:26:10 2019
 Quant Method : Z:\VOASRV\HPCHEM1\MSVOA_W\METHOD\82W010819S.M
 Quant Title : SW846 8260
 QLast Update : Wed Jan 09 04:40:48 2019
 Response via : Initial Calibration

Internal Standards	R.T.	QIon	Response	Conc	Units	Dev(Min)
1) Pentafluorobenzene	7.95	168	76517	50.00	ug/l	0.00
34) 1,4-Difluorobenzene	8.84	114	141765	50.00	ug/l	0.00
63) Chlorobenzene-d5	11.63	117	122392	50.00	ug/l	0.00
72) 1,4-Dichlorobenzene-d4	13.56	152	44455	50.00	ug/l	0.00

System Monitoring Compounds

33) 1,2-Dichloroethane-d4	8.31	65	51072	59.39	ug/l	0.00
Spiked Amount				50.000		
			Recovery	=	118.78%	
35) Dibromofluoromethane	7.88	113	46707	56.49	ug/l	0.00
Spiked Amount				50.000		
			Recovery	=	112.98%	
50) Toluene-d8	10.32	98	185338	53.42	ug/l	0.00
Spiked Amount				50.000		
			Recovery	=	106.84%	
62) 4-Bromofluorobenzene	12.62	95	52591	42.28	ug/l	0.00
Spiked Amount				50.000		
			Recovery	=	84.56%	

Target Compounds

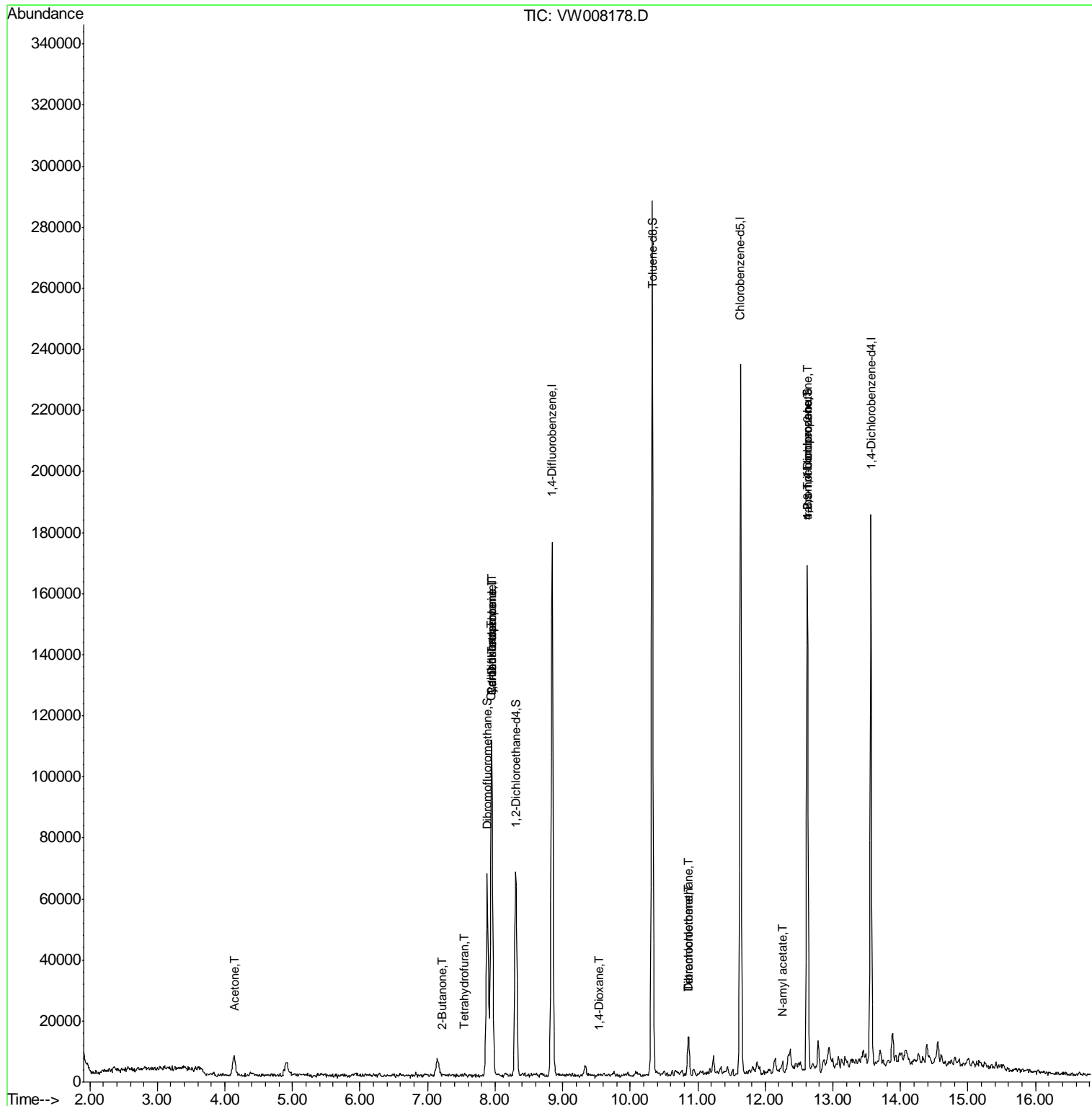
					Qvalue	
11) Tert butyl alcohol	5.25	59	150	Below Cal	#	100
16) Acetone	4.14	43	12210	63.183	ug/l #	87
20) Methylene Chloride	4.92	84	3299	Below Cal	#	73
25) 2-Butanone	7.22	43	243	1.016	ug/l #	49
29) Tetrahydrofuran	7.54	42	320	2.002	ug/l #	68
31) Cyclohexane	7.94	56	2280	1.260	ug/l #	7
36) 1,1-Dichloropropene	7.95	75	6805	4.660	ug/l #	52
38) Carbon Tetrachloride	7.95	117	8738	6.537	ug/l #	17
49) 1,4-Dioxane	9.54	88	33	4.254	ug/l #	11
60) Dibromochloromethane	10.86	129	2548	3.427	ug/l #	11
64) Tetrachloroethene	10.87	164	2541	3.190	ug/l #	78
74) N-amyl acetate	12.26	43	939	1.215	ug/l #	44
76) 1,2,3-Trichloropropane	12.62	75	28064	69.250	ug/l #	1
81) trans-1,4-Dichloro-2-buten	12.62	75	28064	161.262	ug/l #	11

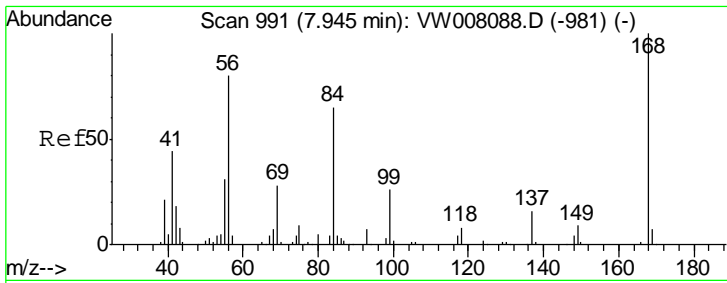
(#) = qualifier out of range (m) = manual integration (+) = signals summed

Data File : VW008178.D
Acq On : 11 Jan 2019 06:00
Operator : SY/AP
Sample : K1099-09
Misc : 4.85G/5ML/MSVOA_W/SOIL
ALS Vial : 42 Sample Multiplier: 1

Instrument :
MSVOA_W
Client Sampled :
TP-17-14

Quant Time: Jan 11 07:26:10 2019
Quant Method : Z:\VOASRV\HPCHEM1\MSVOA_W\METHOD\82W010819S.M
Quant Title : SW846 8260
QLast Update : Wed Jan 09 04:40:48 2019
Response via : Initial Calibration

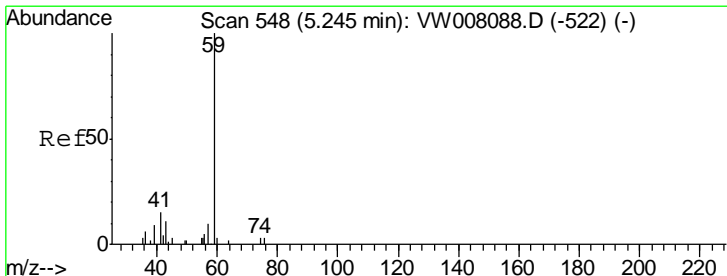
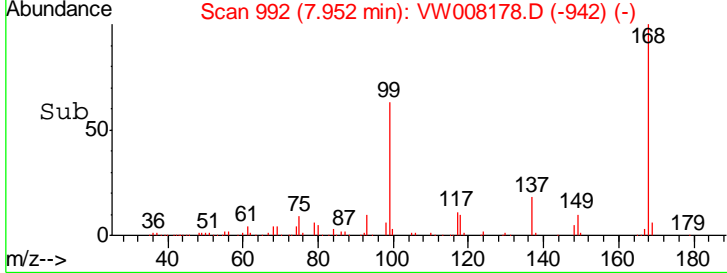
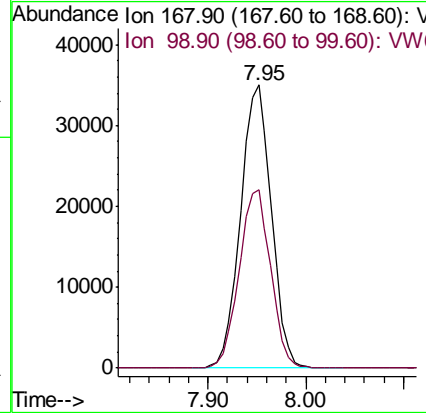
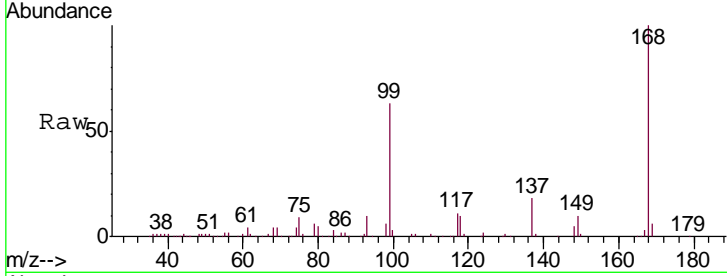




#1
 Pentafluorobenzene
 Concen: 50.000 ug/l
 RT: 7.95 min Scan# 992
 Delta R.T. 0.01 min
 Lab File: VW008178.D
 Acq: 11 Jan 2019 06:00

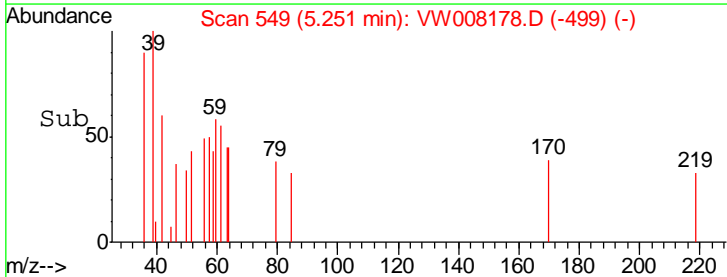
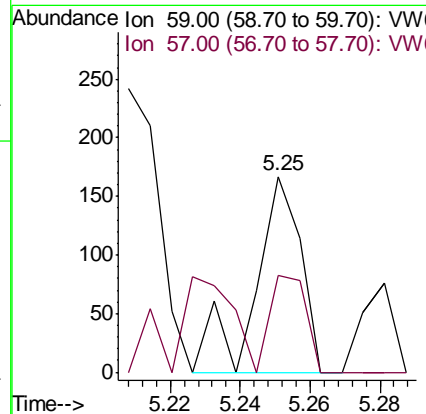
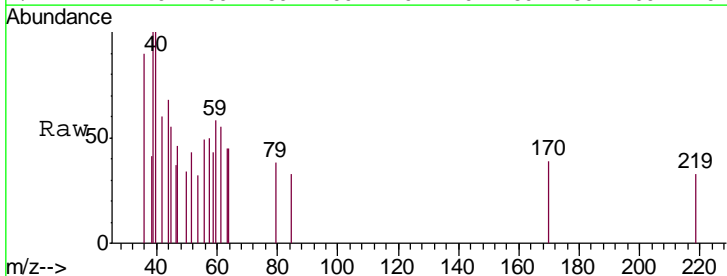
Instrument : MSVOA_W
 ClientSampled : TP-17-14

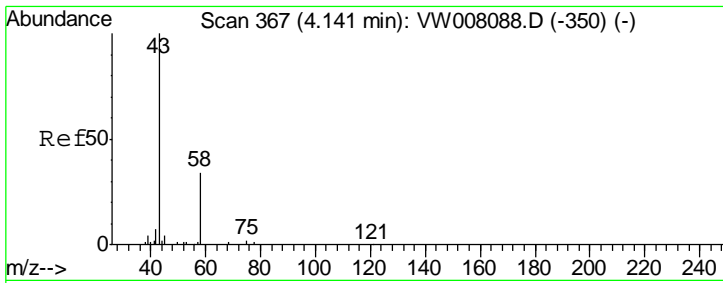
Tgt Ion: 168 Resp: 76517
 Ion Ratio Lower Upper
 168 100
 99 63.0 52.6 78.8



#11
 Tert butyl alcohol
 Concen: Below Cal
 RT: 5.25 min Scan# 549
 Delta R.T. 0.01 min
 Lab File: VW008178.D
 Acq: 11 Jan 2019 06:00

Tgt Ion: 59 Resp: 150
 Ion Ratio Lower Upper
 59 100
 57 39.3 0.0 0.0#

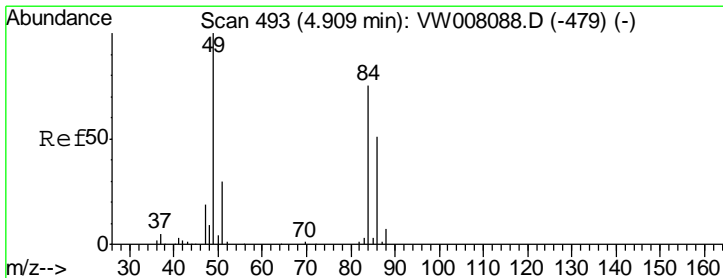
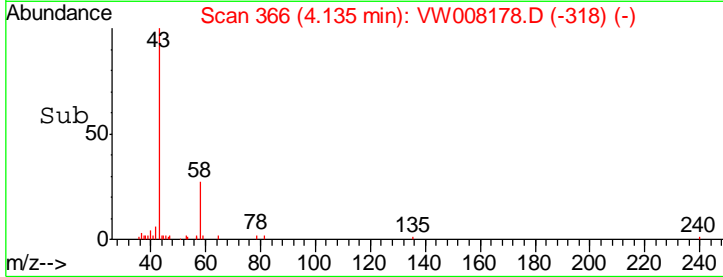
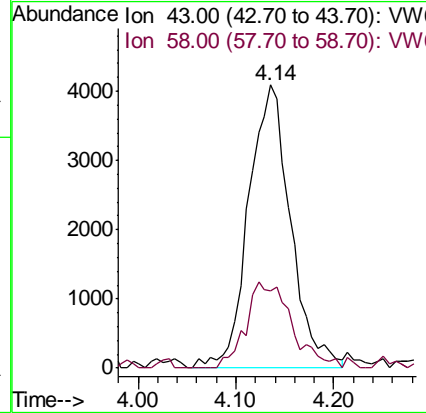
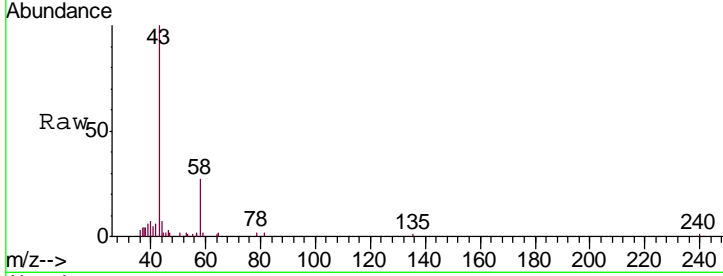




#16
 Acetone
 Concen: 63.183 ug/l
 RT: 4.14 min Scan# 366
 Delta R.T. -0.01 min
 Lab File: VW008178.D
 Acq: 11 Jan 2019 06:00

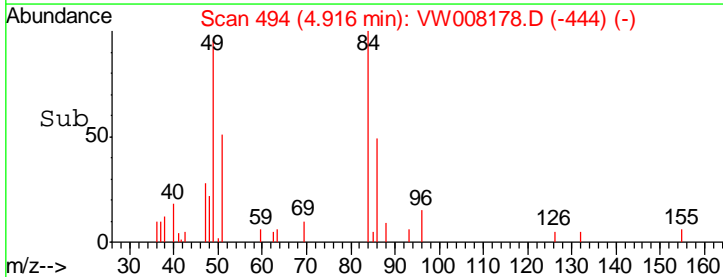
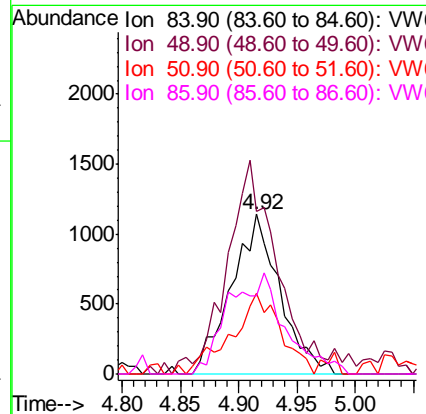
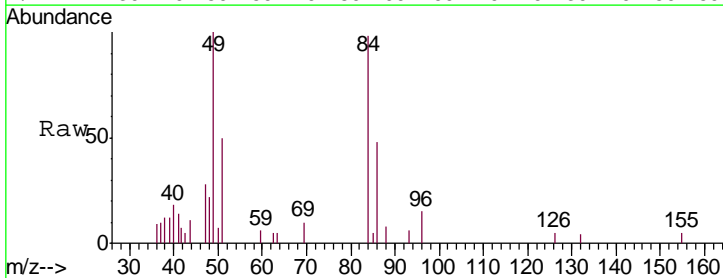
Instrument :
 MSVOA_W
 ClientSampled :
 TP-17-14

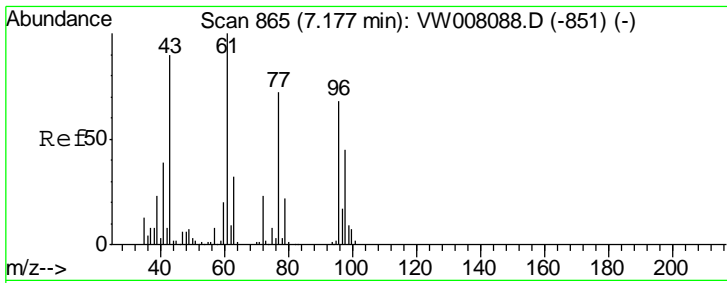
Tgt Ion: 43 Resp: 12210
 Ion Ratio Lower Upper
 43 100
 58 27.2 27.5 41.3#



#20
 Methylene Chloride
 Concen: Below Cal
 RT: 4.92 min Scan# 494
 Delta R.T. 0.01 min
 Lab File: VW008178.D
 Acq: 11 Jan 2019 06:00

Tgt Ion: 84 Resp: 3299
 Ion Ratio Lower Upper
 84 100
 49 95.4 107.1 160.7#
 51 50.8 32.4 48.6#
 86 49.2 54.2 81.4#

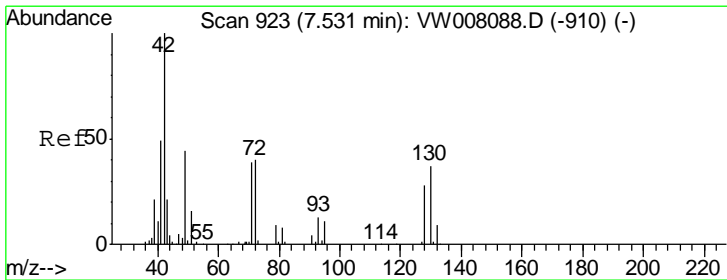
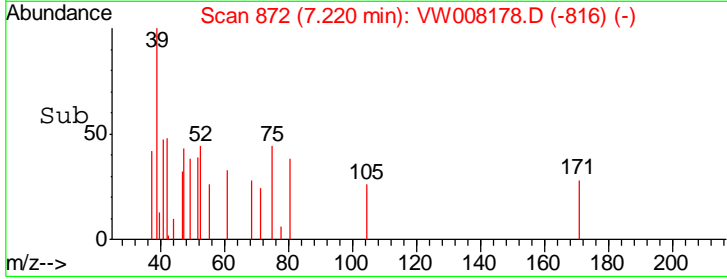
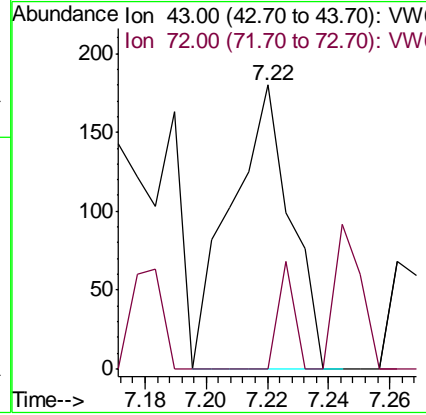
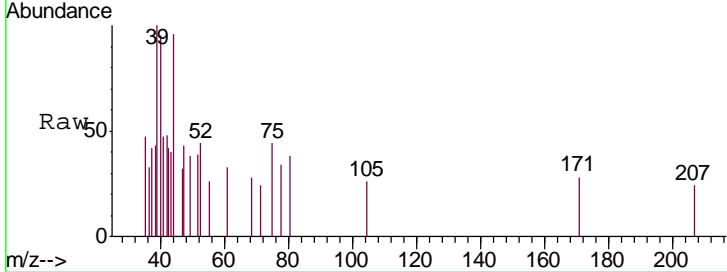




#25
 2-Butanone
 Concen: 1.016 ug/l
 RT: 7.22 min Scan# 872
 Delta R.T. 0.04 min
 Lab File: VW008178.D
 Acq: 11 Jan 2019 06:00

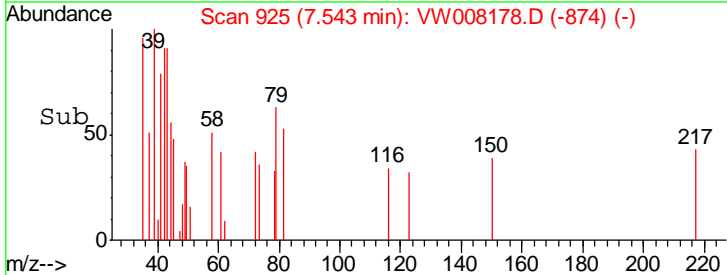
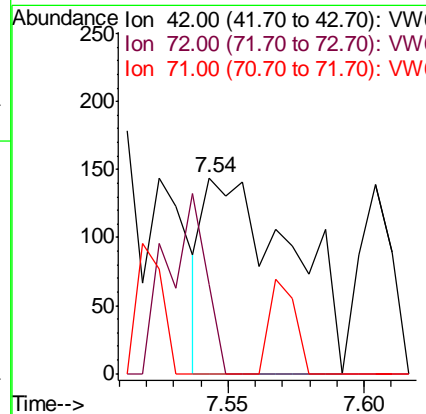
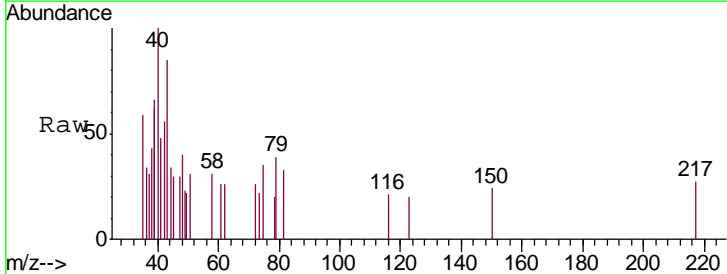
Instrument :
 MSVOA_W
 ClientSampled :
 TP-17-14

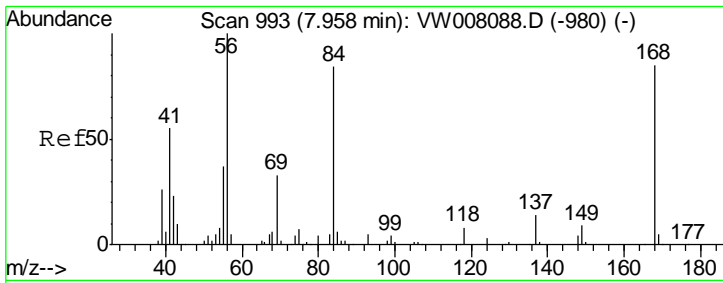
Tgt Ion: 43 Resp: 243
 Ion Ratio Lower Upper
 43 100
 72 0.0 20.5 30.7#



#29
 Tetrahydrofuran
 Concen: 2.002 ug/l
 RT: 7.54 min Scan# 925
 Delta R.T. 0.01 min
 Lab File: VW008178.D
 Acq: 11 Jan 2019 06:00

Tgt Ion: 42 Resp: 320
 Ion Ratio Lower Upper
 42 100
 72 40.9 32.4 48.6
 71 0.0 31.3 46.9#

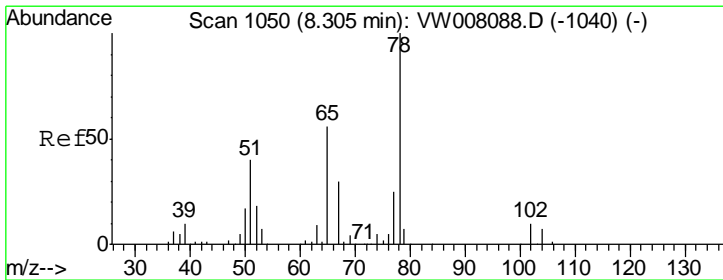
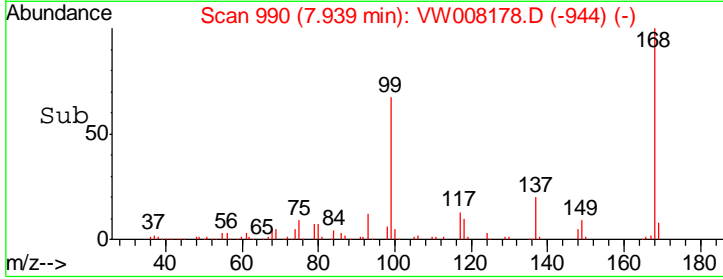
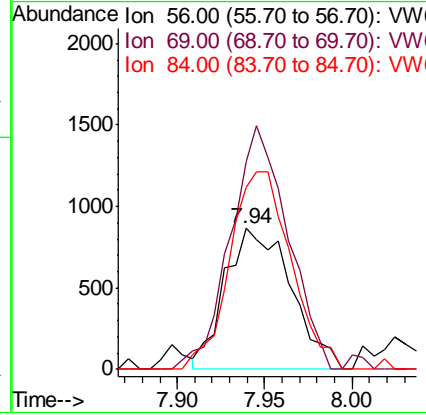
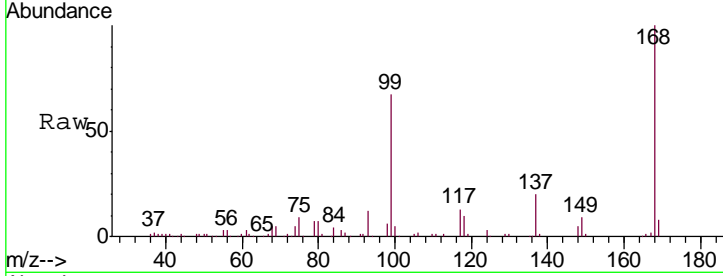




#31
 Cyclohexane
 Concen: 1.260 ug/l
 RT: 7.94 min Scan# 990
 Delta R.T. -0.02 min
 Lab File: VW008178.D
 Acq: 11 Jan 2019 06:00

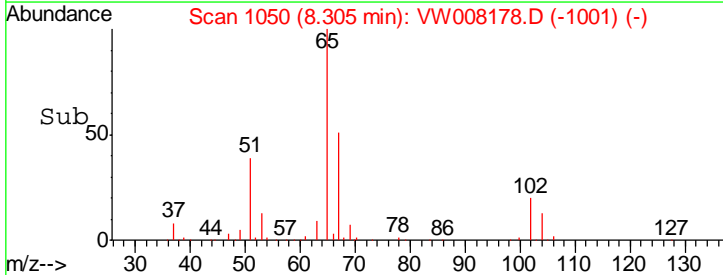
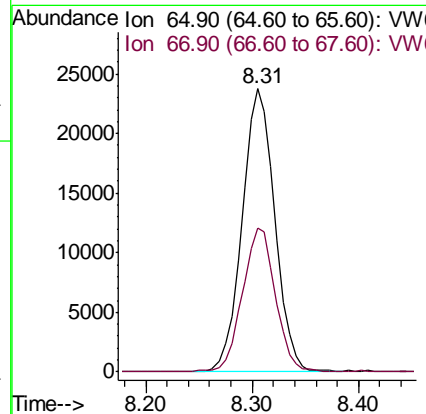
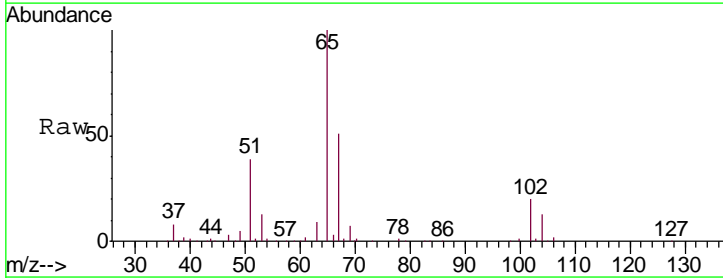
Instrument :
 MSVOA_W
 ClientSampled :
 TP-17-14

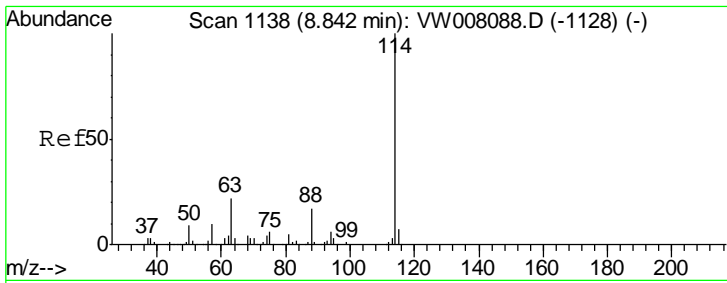
Tgt Ion	Resp	Lower	Upper
56	100		
69	147.9	26.2	39.4#
84	129.2	67.4	101.2#



#33
 1,2-Dichloroethane-d4
 Concen: 59.387 ug/l
 RT: 8.31 min Scan# 1050
 Delta R.T. 0.00 min
 Lab File: VW008178.D
 Acq: 11 Jan 2019 06:00

Tgt Ion	Resp	Lower	Upper
65	100		
67	51.5	0.0	106.8

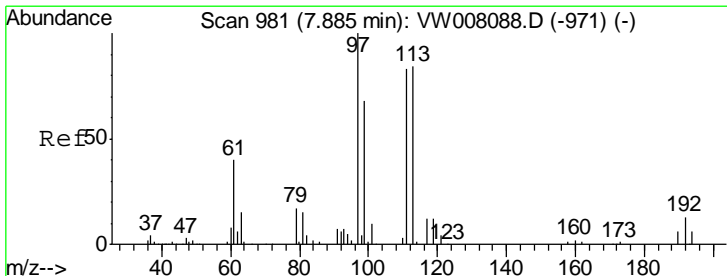
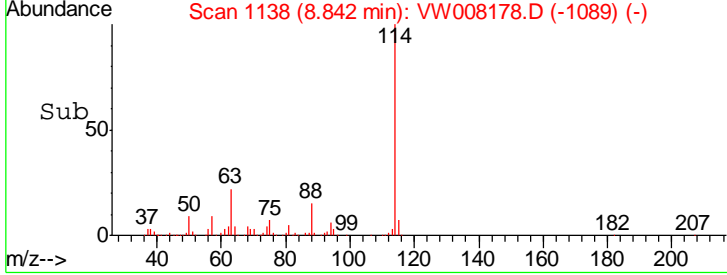
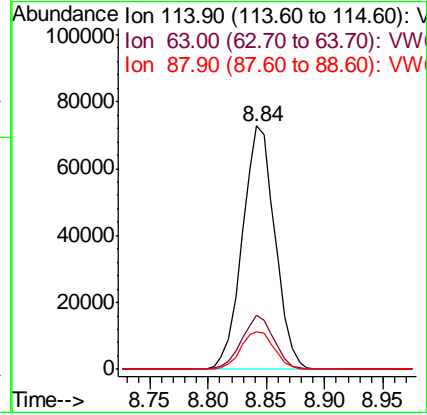
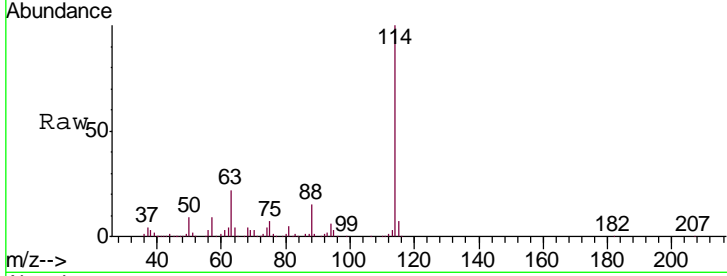




#34
 1,4-Difluorobenzene
 Concen: 50.000 ug/l
 RT: 8.84 min Scan# 1138
 Delta R.T. 0.00 min
 Lab File: VW008178.D
 Acq: 11 Jan 2019 06:00

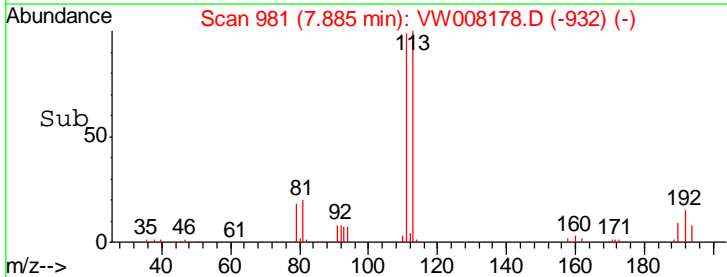
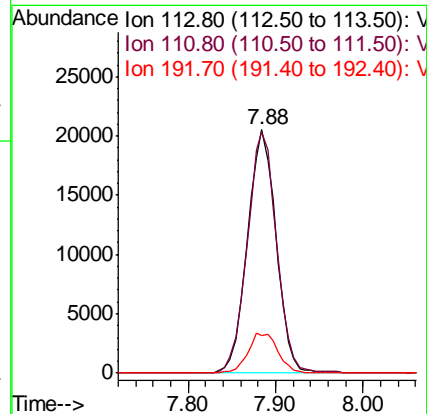
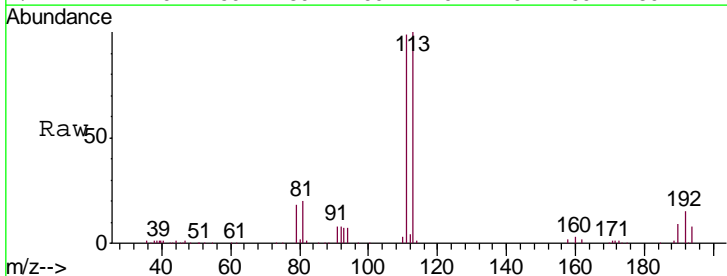
Instrument :
 MSVOA_W
 ClientSampled :
 TP-17-14

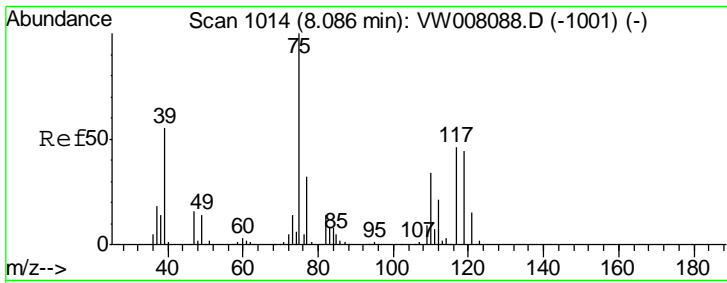
Tgt Ion	Resp	Lower	Upper
114	141765		
63	22.0	0.0	43.4
88	15.2	0.0	33.4



#35
 Dibromofluoromethane
 Concen: 56.489 ug/l
 RT: 7.88 min Scan# 981
 Delta R.T. 0.00 min
 Lab File: VW008178.D
 Acq: 11 Jan 2019 06:00

Tgt Ion	Resp	Lower	Upper
113	46707		
111	100.8	81.8	122.8
192	17.0	12.8	19.2

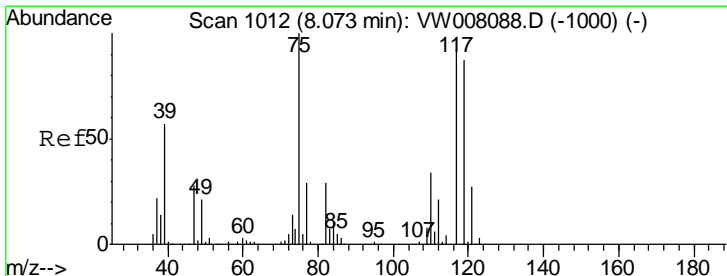
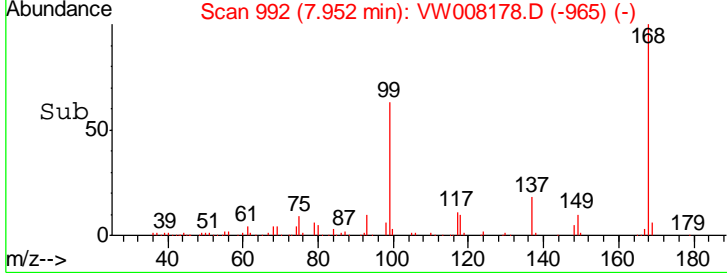
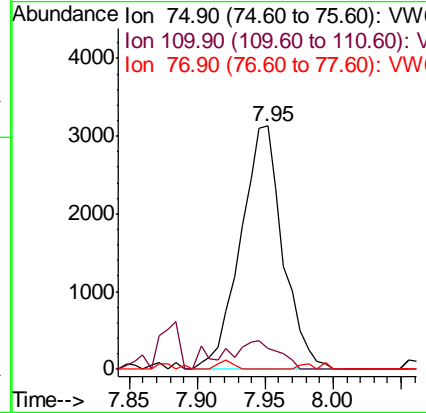
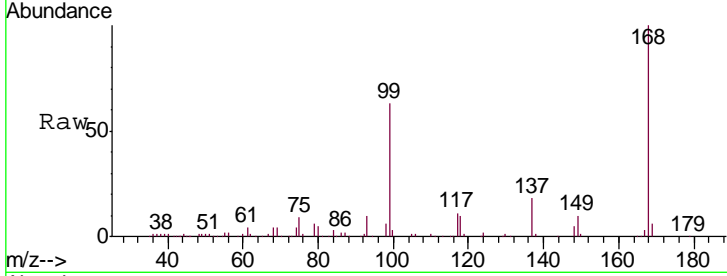




#36
 1,1-Dichloropropene
 Concen: 4.660 ug/l
 RT: 7.95 min Scan# 992
 Delta R.T. -0.13 min
 Lab File: VW008178.D
 Acq: 11 Jan 2019 06:00

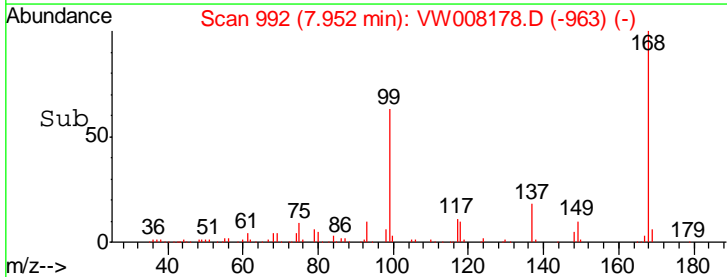
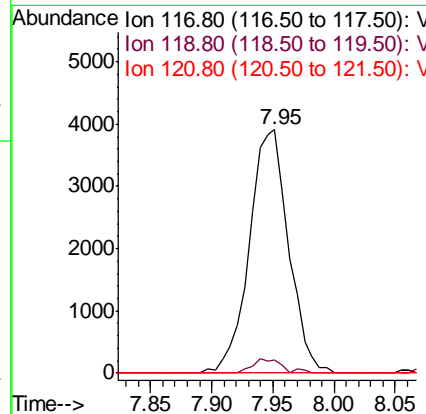
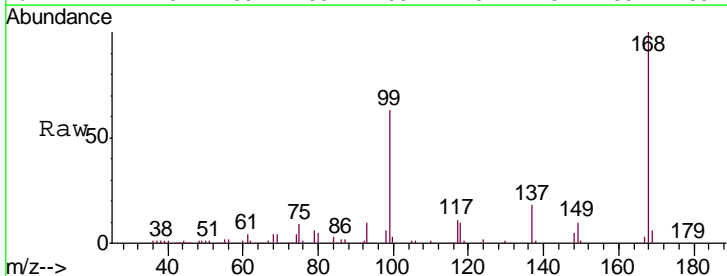
Instrument :
 MSVOA_W
 ClientSampled :
 TP-17-14

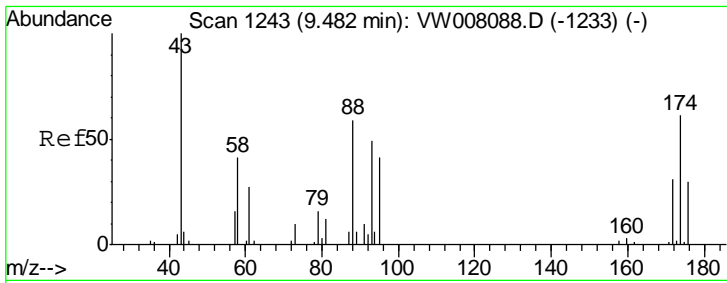
Tgt Ion	Resp	Lower	Upper
75	100		
110	12.1	17.1	51.3#
77	0.0	25.5	38.3#



#38
 Carbon Tetrachloride
 Concen: 6.537 ug/l
 RT: 7.95 min Scan# 992
 Delta R.T. -0.12 min
 Lab File: VW008178.D
 Acq: 11 Jan 2019 06:00

Tgt Ion	Resp	Lower	Upper
117	100		
119	5.6	75.8	113.8#
121	0.0	23.7	35.5#

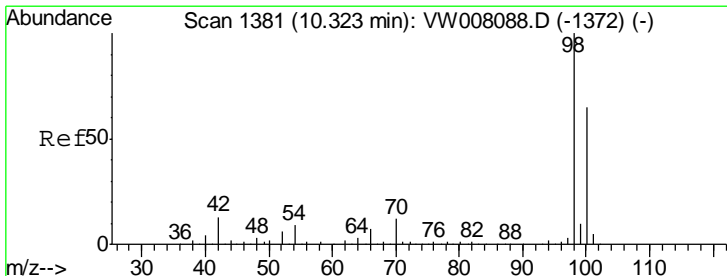
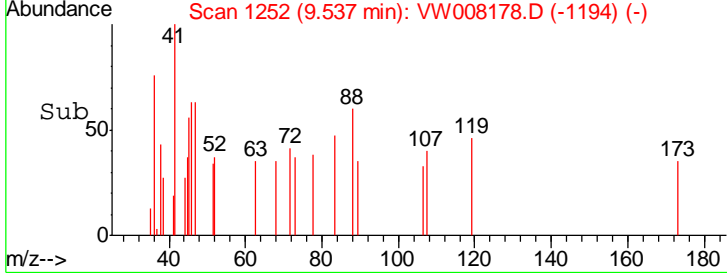
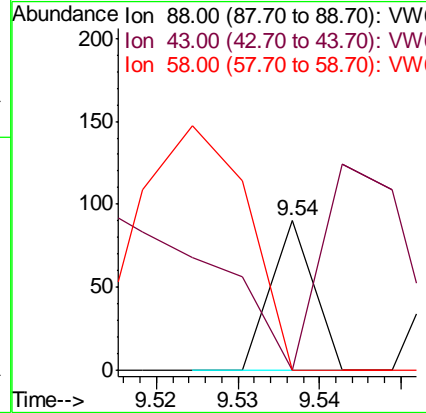
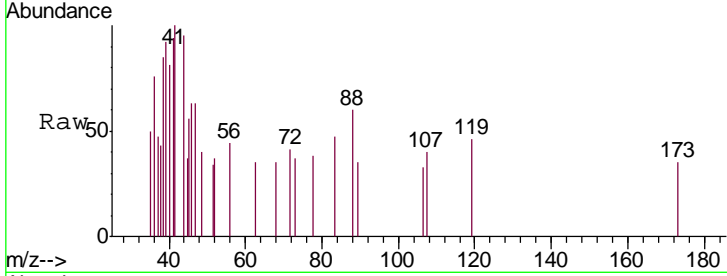




#49
 1,4-Dioxane
 Concen: 4.254 ug/l
 RT: 9.54 min Scan# 1252
 Delta R.T. 0.05 min
 Lab File: VW008178.D
 Acq: 11 Jan 2019 06:00

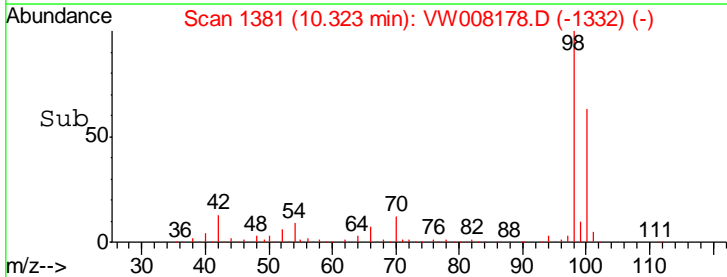
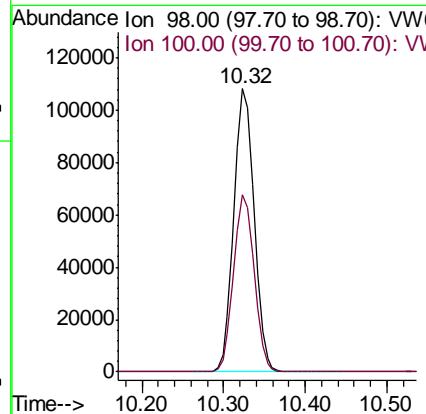
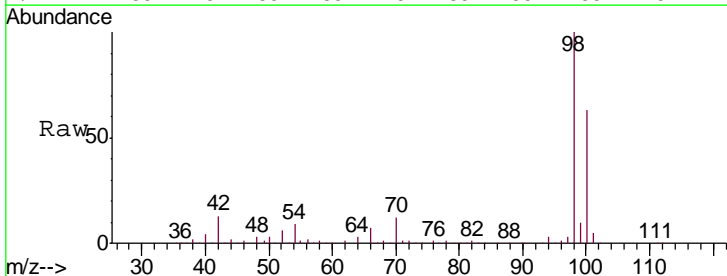
Instrument : MSVOA_W
 ClientSampled : TP-17-14

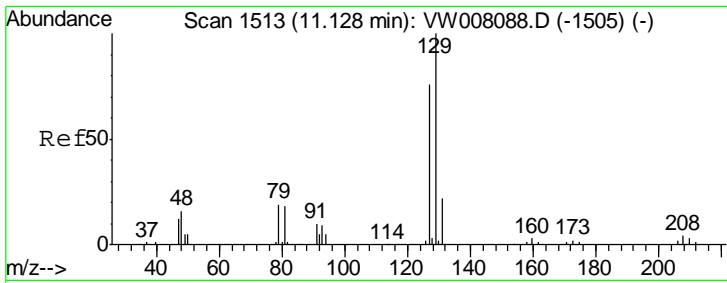
Tgt Ion	Resp	Lower	Upper
88	100		
43	257.6	0.0	0.0#
58	0.0	61.7	92.5#



#50
 Toluene-d8
 Concen: 53.416 ug/l
 RT: 10.32 min Scan# 1381
 Delta R.T. 0.00 min
 Lab File: VW008178.D
 Acq: 11 Jan 2019 06:00

Tgt Ion	Resp	Lower	Upper
98	100		
100	63.7	51.7	77.5

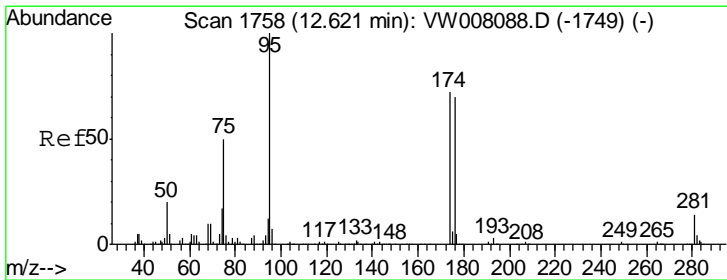
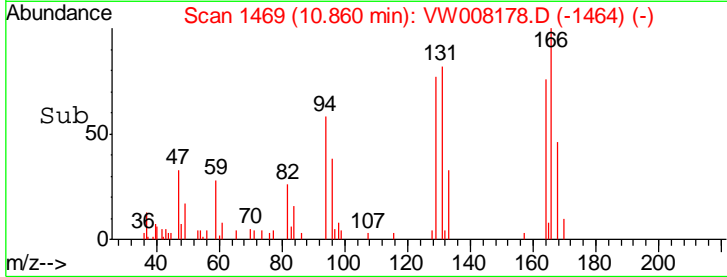
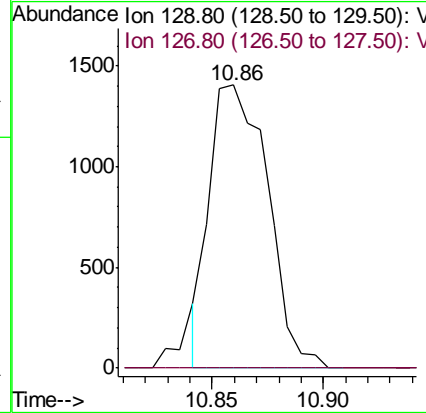
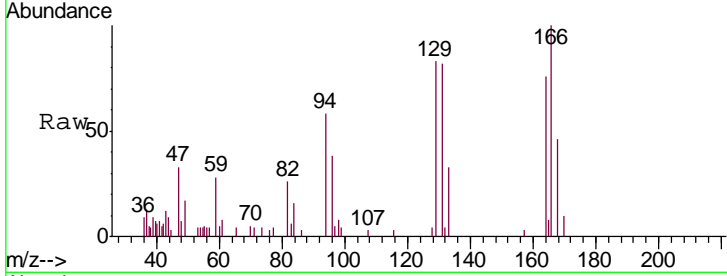




#60
 Dibromochloromethane
 Concen: 3.427 ug/l
 RT: 10.86 min Scan# 1469
 Delta R.T. -0.27 min
 Lab File: VW008178.D
 Acq: 11 Jan 2019 06:00

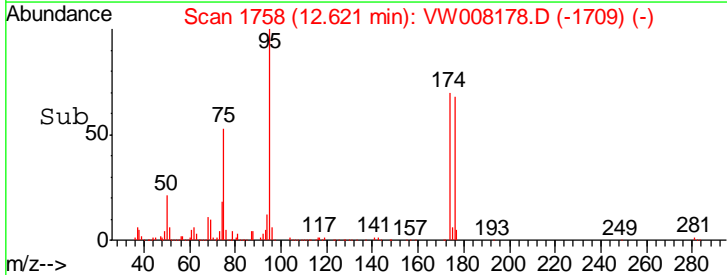
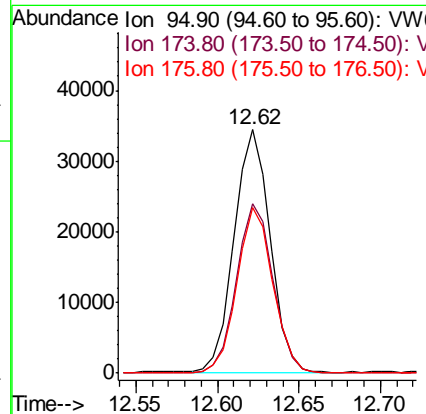
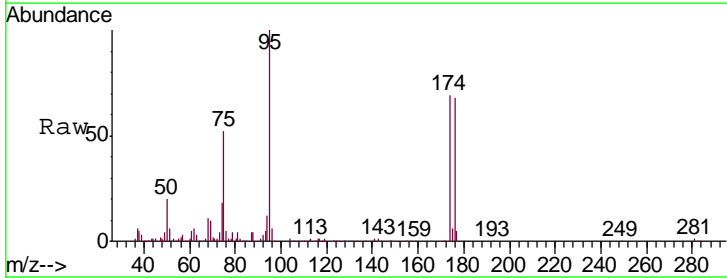
Instrument :
 MSVOA_W
 ClientSampled :
 TP-17-14

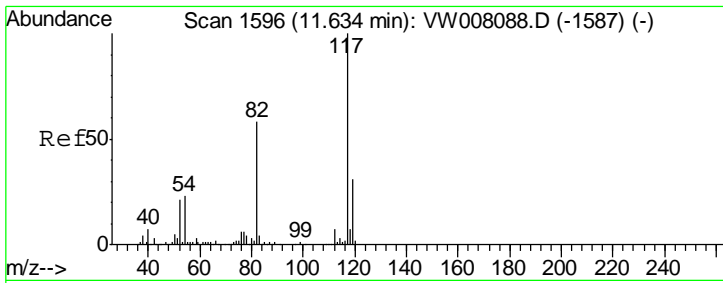
Tgt Ion: 129 Resp: 2548
 Ion Ratio Lower Upper
 129 100
 127 0.0 38.9 116.6#



#62
 4-Bromofluorobenzene
 Concen: 42.280 ug/l
 RT: 12.62 min Scan# 1758
 Delta R.T. 0.00 min
 Lab File: VW008178.D
 Acq: 11 Jan 2019 06:00

Tgt Ion: 95 Resp: 52591
 Ion Ratio Lower Upper
 95 100
 174 71.1 0.0 143.0
 176 68.3 0.0 140.2

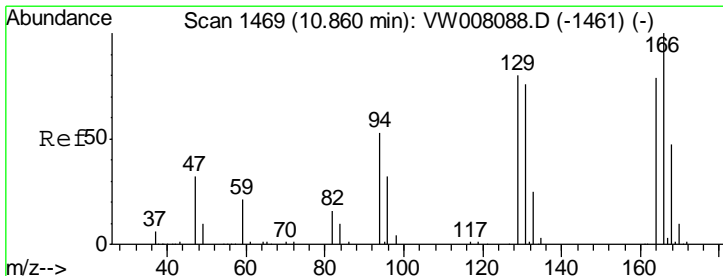
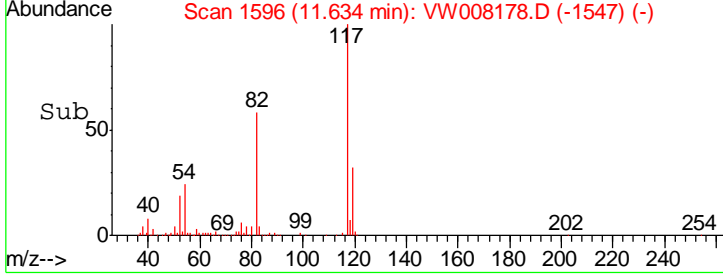
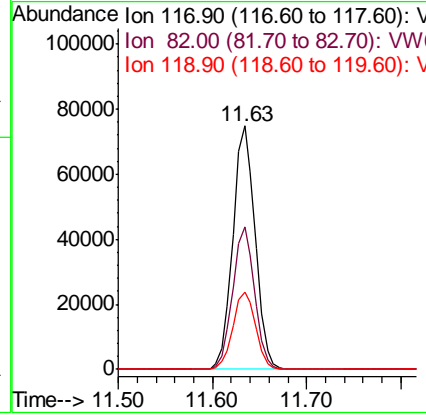
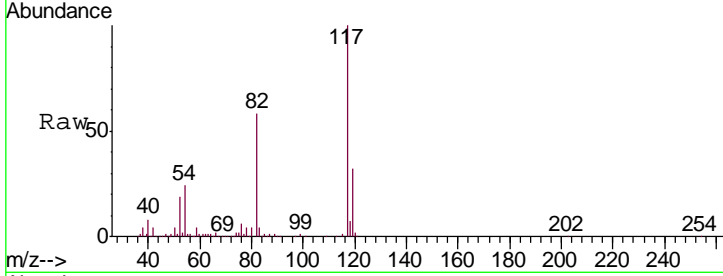




#63
 Chlorobenzene-d5
 Concen: 50.000 ug/l
 RT: 11.63 min Scan# 1596
 Delta R.T. 0.00 min
 Lab File: VW008178.D
 Acq: 11 Jan 2019 06:00

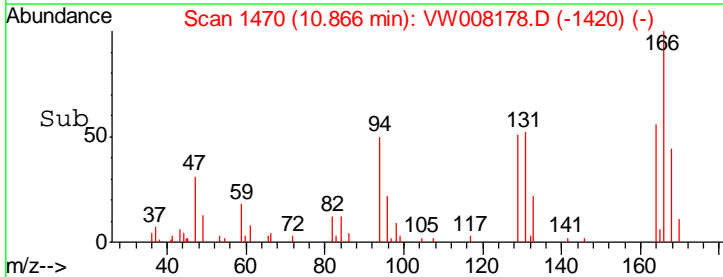
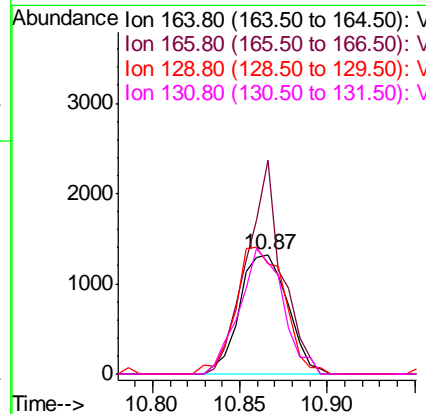
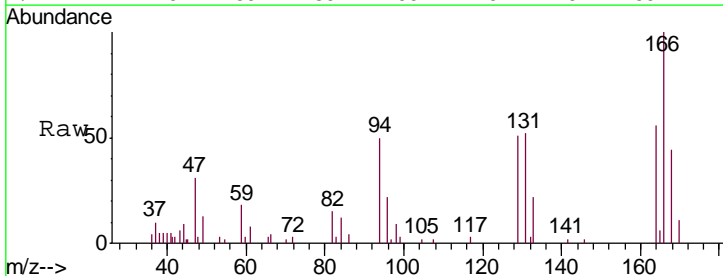
Instrument : MSVOA_W
 ClientSampled : TP-17-14

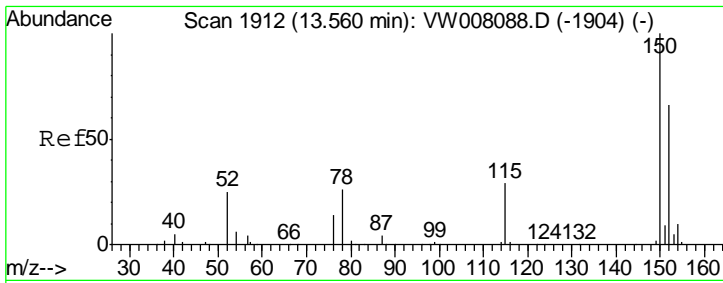
Tgt Ion	Resp	Lower	Upper
117	122392		
82	58.2	46.4	69.6
119	31.7	24.7	37.1



#64
 Tetrachloroethene
 Concen: 3.190 ug/l
 RT: 10.87 min Scan# 1470
 Delta R.T. 0.01 min
 Lab File: VW008178.D
 Acq: 11 Jan 2019 06:00

Tgt Ion	Resp	Lower	Upper
164	2541		
166	179.0	100.7	151.1#
129	92.1	81.0	121.4
131	93.4	76.1	114.1

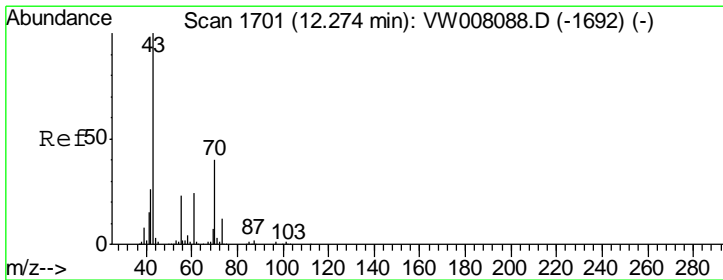
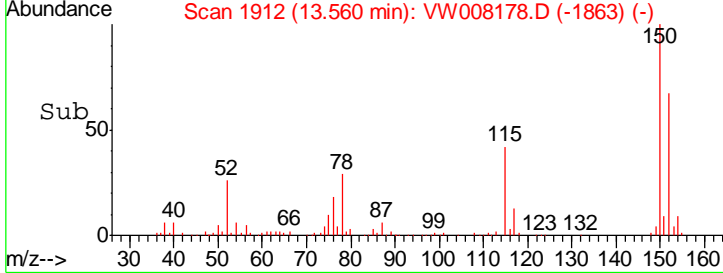
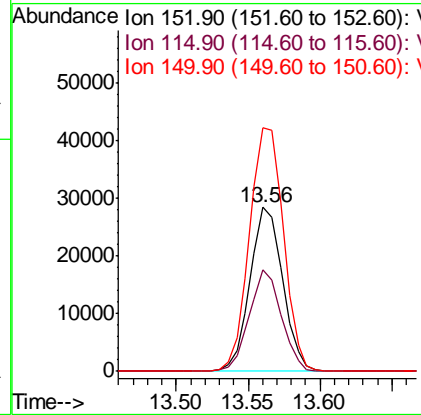
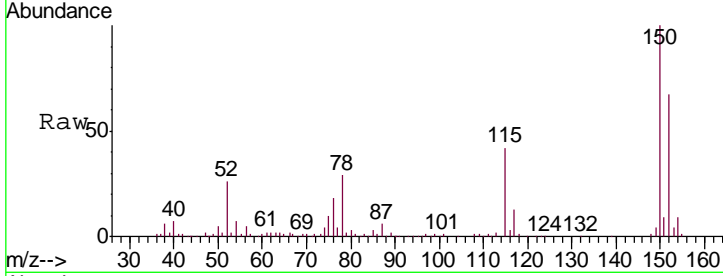




#72
 1,4-Dichlorobenzene-d4
 Concen: 50.000 ug/l
 RT: 13.56 min Scan# 1912
 Delta R.T. 0.00 min
 Lab File: VW008178.D
 Acq: 11 Jan 2019 06:00

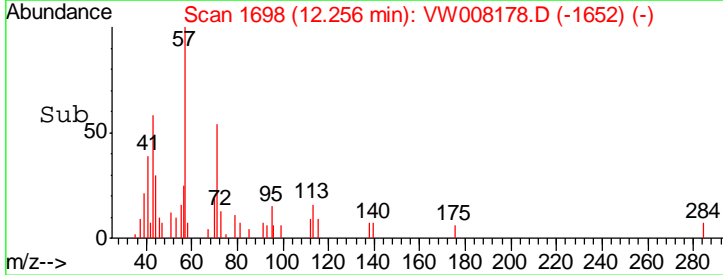
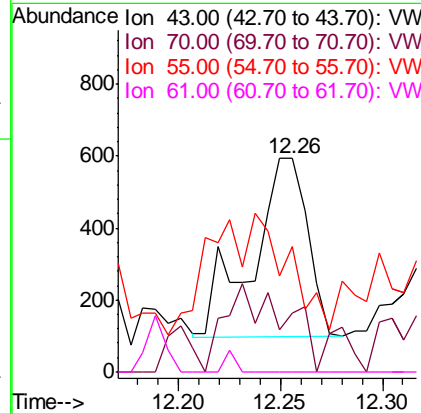
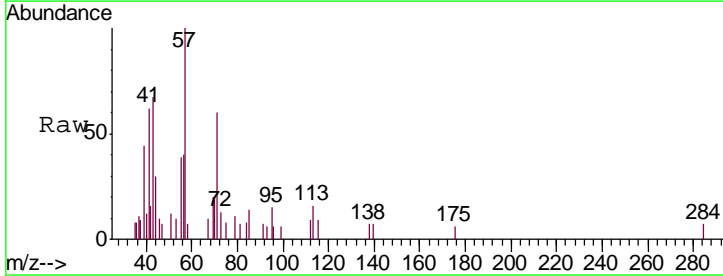
Instrument :
 MSVOA_W
 ClientSampled :
 TP-17-14

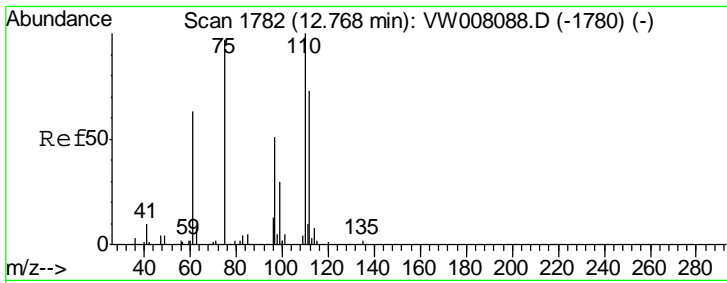
Tgt Ion	Resp	Lower	Upper
152	100		
115	61.4	30.8	92.4
150	155.2	0.0	350.2



#74
 N-amyl acetate
 Concen: 1.215 ug/l
 RT: 12.26 min Scan# 1698
 Delta R.T. -0.02 min
 Lab File: VW008178.D
 Acq: 11 Jan 2019 06:00

Tgt Ion	Resp	Lower	Upper
43	100		
70	0.0	32.4	48.6#
55	0.0	18.7	28.1#
61	0.0	19.0	28.6#

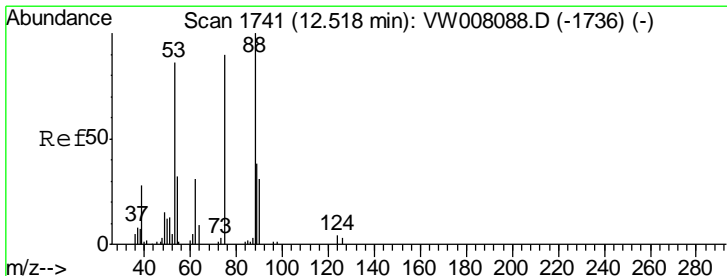
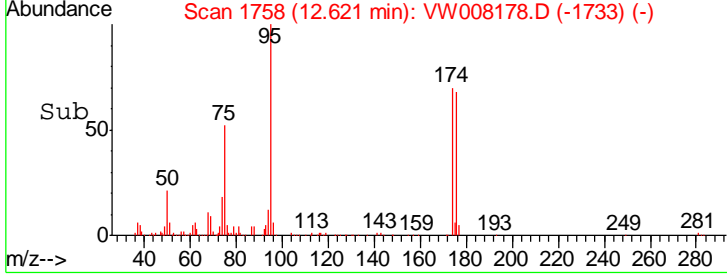
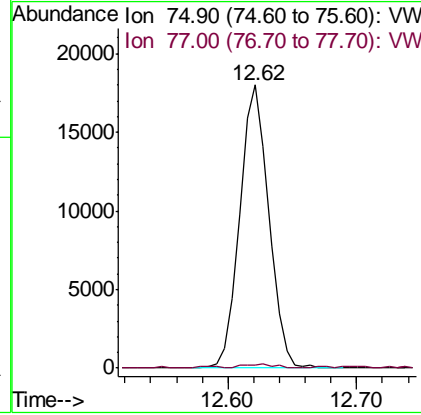
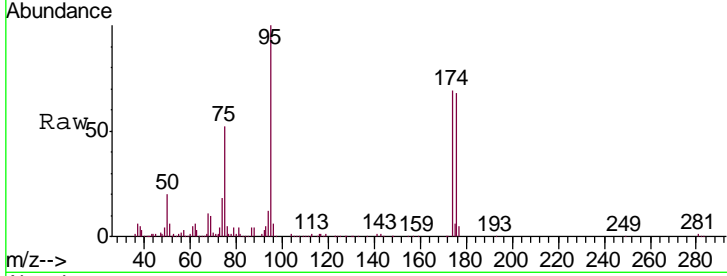




#76
 1,2,3-Trichloropropane
 Concen: 69.250 ug/l
 RT: 12.62 min Scan# 1758
 Delta R.T. -0.15 min
 Lab File: VW008178.D
 Acq: 11 Jan 2019 06:00

Instrument : MSVOA_W
 ClientSampled : TP-17-14

Tgt Ion: 75 Resp: 28064
 Ion Ratio Lower Upper
 75 100
 77 1.7 179.4 538.2#



#81
 trans-1,4-Dichloro-2-butene
 Concen: 161.262 ug/l
 RT: 12.62 min Scan# 1758
 Delta R.T. 0.10 min
 Lab File: VW008178.D
 Acq: 11 Jan 2019 06:00

Tgt Ion: 75 Resp: 28064
 Ion Ratio Lower Upper
 75 100
 53 1.1 78.8 118.2#
 89 0.1 35.4 53.2#

