

Data Path : Z:\VOASRV\HPCHEM1\MSVOA W\DATA\VW011019\
 Data File : VW008149.D
 Acq On : 10 Jan 2019 15:28
 Operator : SY/AP
 Sample : K1075-12
 Misc : 3.55G/5ML/MSVOA W/SOIL
 ALS Vial : 9 Sample Multiplier: 1

Instrument :
 MSVOA_W
 ClientSampleId :
 BASIN-6

Integration Parameters: RTEINT.P
 Integrator: RTE
 Smoothing : ON Filtering: 5
 Sampling : 1 Min Area: 3 % of largest Peak
 Start Thrs: 0.2 Max Peaks: 100
 Stop Thrs : 0 Peak Location: TOP

If leading or trailing edge < 100 prefer < Baseline drop else tangent >
 Peak separation: 5

Method : Z:\VOASRV\HPCHEM1\MSVOA_W\METHOD\82W010819S.M
 Title : SW846 8260

Signal : TIC

peak #	R.T. min	first scan	max scan	last scan	PK TY	peak height	corr. area	corr. % max.	% of total
1	2.154	38	41	48	rBV5	3174	7025	1.98%	0.386%
2	4.915	486	494	504	rVB5	3112	9167	2.59%	0.503%
3	7.141	849	859	872	rBV2	5522	17371	4.90%	0.953%
4	7.884	971	981	986	rBV	44576	108391	30.59%	5.949%
5	7.951	986	992	1001	rVB	74594	166338	46.95%	9.129%
6	8.305	1035	1050	1063	rVB2	48227	108838	30.72%	5.973%
7	8.841	1130	1138	1148	rBV	125213	247580	69.88%	13.588%
8	9.896	1303	1311	1318	rVB5	2399	5228	1.48%	0.287%
9	10.323	1373	1381	1389	rBV	204092	354305	100.00%	19.445%
10	10.707	1439	1444	1450	rVB3	3724	6973	1.97%	0.383%
11	11.439	1560	1564	1569	rVB5	2133	3624	1.02%	0.199%
12	11.634	1589	1596	1604	rBV	175896	291999	82.41%	16.025%
13	12.621	1751	1758	1767	rVB	141346	225413	63.62%	12.371%
14	13.560	1905	1912	1919	rBV	164961	265595	74.96%	14.576%
15	14.072	1990	1996	2002	rVB2	2458	4266	1.20%	0.234%

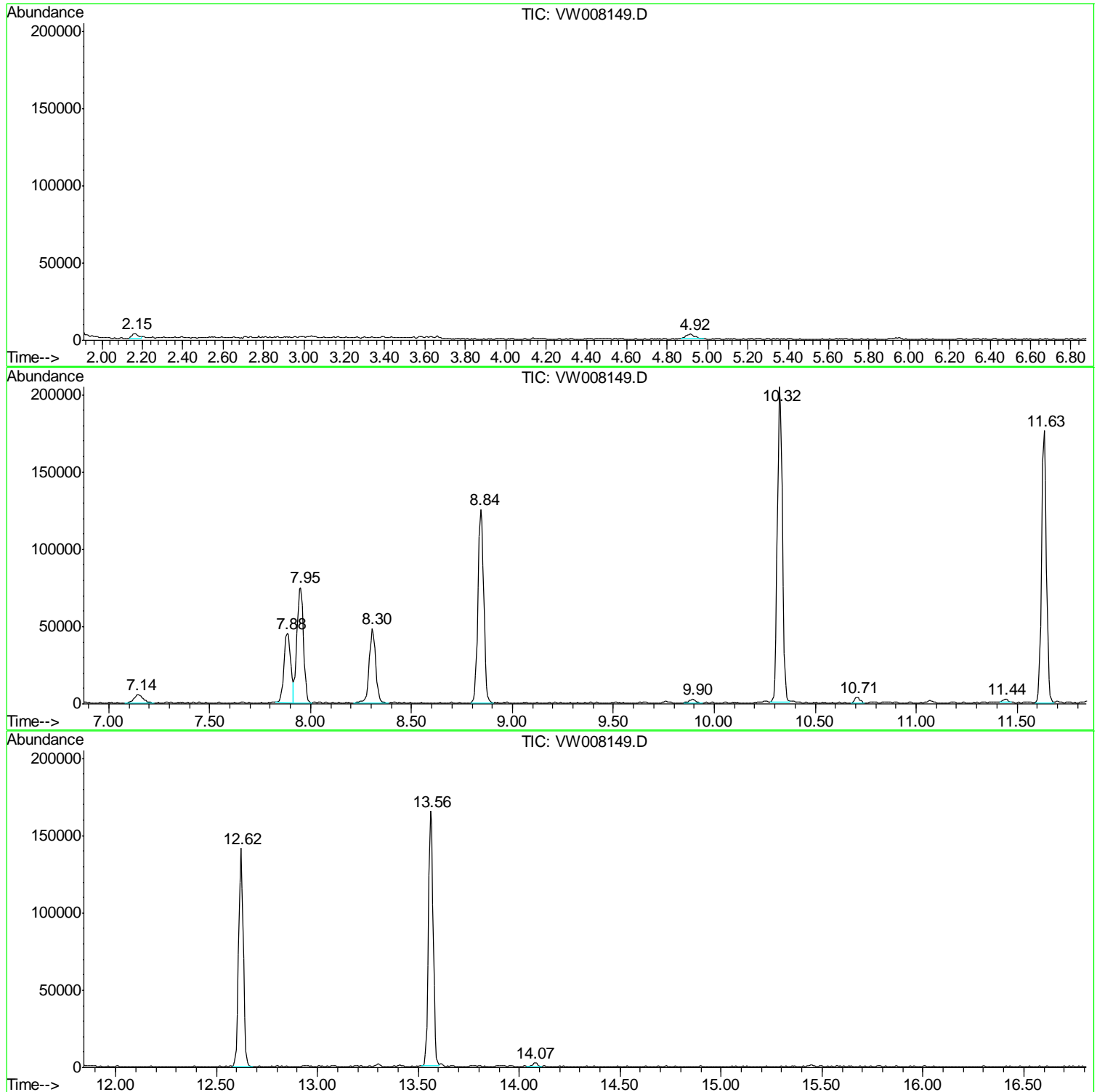
Sum of corrected areas: 1822113

Data Path : Z:\VOASRV\HPCHEM1\MSVOA W\DATA\VW011019\
Data File : VW008149.D
Acq On : 10 Jan 2019 15:28
Operator : SY/AP
Sample : K1075-12
Misc : 3.55G/5ML/MSVOA W/SOIL
ALS Vial : 9 Sample Multiplier: 1

Instrument :
MSVOA_W
ClientSampled :
BASIN-6

Quant Method : Z:\VOASRV\HPCHEM1\MSVOA_W\METHOD\82W010819S.M
Quant Title : SW846 8260

TIC Library : C:\DATABASE\NIST11.L
TIC Integration Parameters: LSCINT.P



Data Path : Z:\VOASRV\HPCHEM1\MSVOA_W\DATA\VW011019\
Data File : VW008149.D
Acq On : 10 Jan 2019 15:28
Operator : SY/AP
Sample : K1075-12
Misc : 3.55G/5ML/MSVOA_W/SOIL
ALS Vial : 9 Sample Multiplier: 1

Instrument :
MSVOA_W
ClientSampleId :
BASIN-6

Quant Method : Z:\VOASRV\HPCHEM1\MSVOA_W\METHOD\82W010819S.M
Quant Title : SW846 8260

TIC Library : C:\DATABASE\NIST11.L
TIC Integration Parameters: LSCINT.P

No Library Search Compounds Detected

Data Path : Z:\VOASRV\HPCHEM1\MSVOA_W\DATA\VW011019\
Data File : VW008149.D
Acq On : 10 Jan 2019 15:28
Operator : SY/AP
Sample : K1075-12
Misc : 3.55G/5ML/MSVOA_W/SOIL
ALS Vial : 9 Sample Multiplier: 1

Instrument :
MSVOA_W
ClientSampleId :
BASIN-6

Quant Method : Z:\VOASRV\HPCHEM1\MSVOA_W\METHOD\82W010819S.M
Quant Title : SW846 8260

TIC Library : C:\DATABASE\NIST11.L
TIC Integration Parameters: LSCINT.P

TIC Top Hit name	RT	EstConc	Units	Response	--Internal Standard--			
					#	RT	Resp	Conc
