

Data Path : Z:\VOASRV\HPCHEM1\MSVOA W\DATA\VW011119\  
 Data File : VW008196.D  
 Acq On : 11 Jan 2019 16:13  
 Operator : SY/VA  
 Sample : K1088-01  
 Misc : 5.02G/5ML/MSVOA W/SOIL  
 ALS Vial : 6 Sample Multiplier: 1

Instrument :  
 MSVOA\_W  
 ClientSampleId :  
 CPSB-07(15-20)

Integration Parameters: RTEINT.P  
 Integrator: RTE  
 Smoothing : ON  
 Sampling : 1  
 Start Thrs: 0.2  
 Stop Thrs : 0

Filtering: 5  
 Min Area: 3 % of largest Peak  
 Max Peaks: 100  
 Peak Location: TOP

If leading or trailing edge < 100 prefer < Baseline drop else tangent >  
 Peak separation: 5

Method : Z:\VOASRV\HPCHEM1\MSVOA\_W\METHOD\82W010819S.M  
 Title : SW846 8260

Signal : TIC

peak #	R.T. min	first scan	max scan	last scan	PK TY	peak height	corr. area	corr. % max.	% of total
1	2.160	37	42	46	rBV5	3757	7345	1.27%	0.236%
2	4.135	360	366	371	rBV	3640	7971	1.38%	0.256%
3	4.903	483	492	509	rBV3	9046	35572	6.14%	1.142%
4	7.153	850	861	868	rBV2	7439	23395	4.04%	0.751%
5	7.885	972	981	986	rBV	76420	188037	32.47%	6.039%
6	7.946	986	991	1003	rVB	133597	297557	51.39%	9.556%
7	8.305	1035	1050	1063	rBV	76865	173394	29.94%	5.569%
8	8.842	1129	1138	1150	rBV	207684	407746	70.42%	13.095%
9	9.890	1301	1310	1317	rBV10	2900	9206	1.59%	0.296%
10	10.323	1374	1381	1389	rBV	328119	579042	100.00%	18.596%
11	10.707	1438	1444	1451	rBV3	8556	17055	2.95%	0.548%
12	11.067	1496	1503	1508	rBV4	7103	13267	2.29%	0.426%
13	11.439	1558	1564	1570	rVB	8574	15628	2.70%	0.502%
14	11.634	1588	1596	1603	rBV	284480	480130	82.92%	15.420%
15	12.621	1751	1758	1767	rVB	228510	366334	63.27%	11.765%
16	12.938	1805	1810	1816	rVB4	5681	10065	1.74%	0.323%
17	13.298	1865	1869	1875	rVB4	3306	5873	1.01%	0.189%
18	13.560	1905	1912	1919	rBV	286366	450374	77.78%	14.464%
19	14.079	1991	1997	2006	rVB	4884	9365	1.62%	0.301%
20	14.341	2032	2040	2045	rBV9	2883	8104	1.40%	0.260%
21	15.450	2214	2222	2226	rBV4	4658	8323	1.44%	0.267%

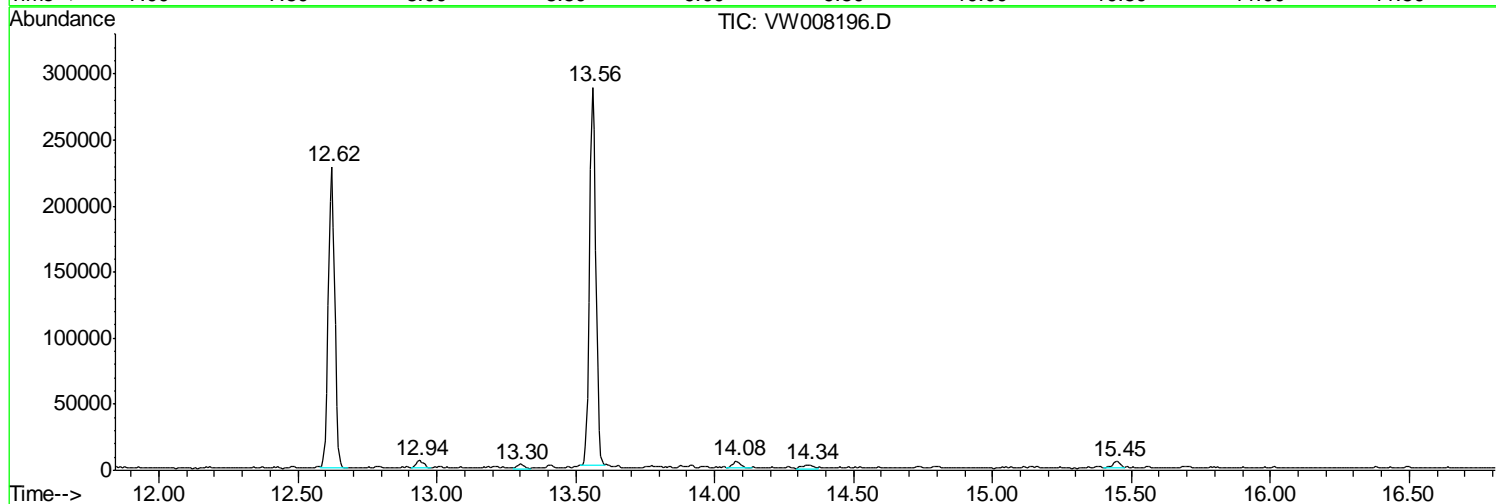
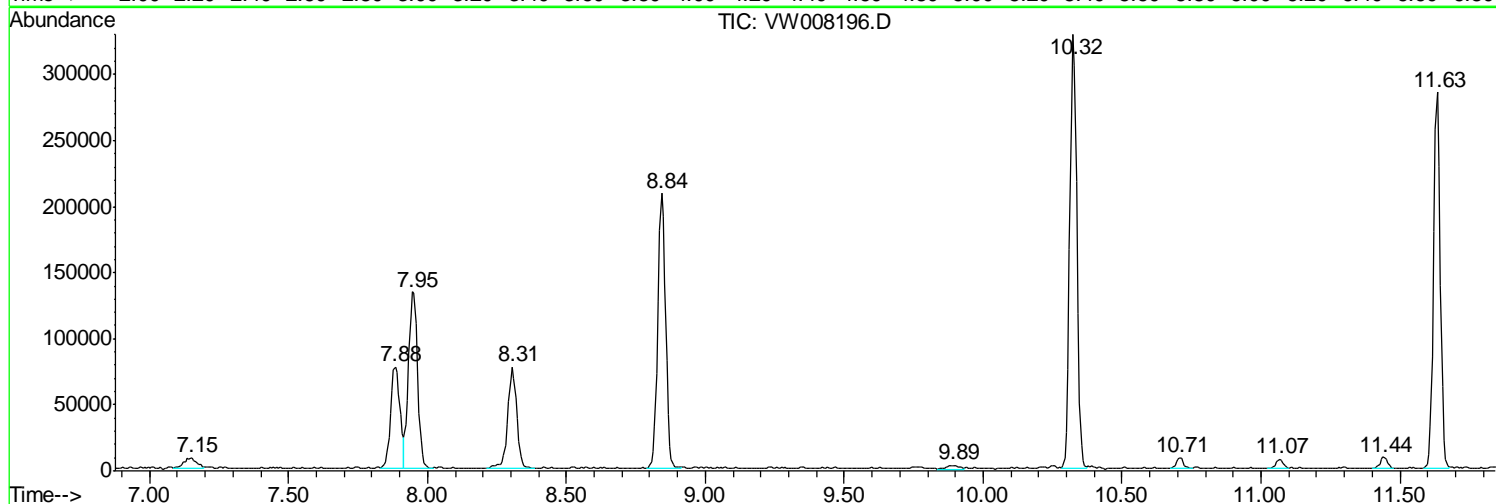
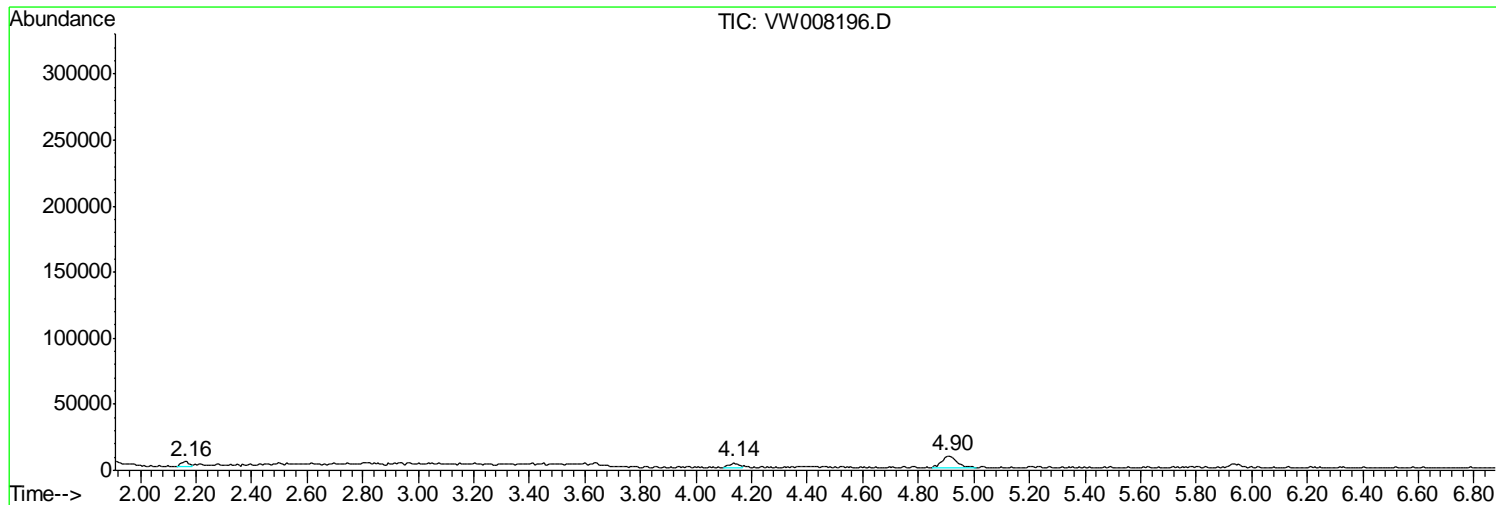
Sum of corrected areas: 3113783

Data Path : Z:\VOASRV\HPCHEM1\MSVOA W\DATA\VW011119\  
Data File : VW008196.D  
Acq On : 11 Jan 2019 16:13  
Operator : SY/VA  
Sample : K1088-01  
Misc : 5.02G/5ML/MSVOA W/SOIL  
ALS Vial : 6 Sample Multiplier: 1

Instrument :  
MSVOA\_W  
ClientSampleId :  
CPSB-07(15-20)

Quant Method : Z:\VOASRV\HPCHEM1\MSVOA\_W\METHOD\82W010819S.M  
Quant Title : SW846 8260

TIC Library : C:\DATABASE\NIST11.L  
TIC Integration Parameters: LSCINT.P



Data Path : Z:\VOASRV\HPCHEM1\MSVOA\_W\DATA\VW011119\  
Data File : VW008196.D  
Acq On : 11 Jan 2019 16:13  
Operator : SY/VA  
Sample : K1088-01  
Misc : 5.02G/5ML/MSVOA\_W/SOIL  
ALS Vial : 6 Sample Multiplier: 1

**Instrument :**  
MSVOA\_W  
**ClientSampleId :**  
CPSB-07(15-20)

Quant Method : Z:\VOASRV\HPCHEM1\MSVOA\_W\METHOD\82W010819S.M  
Quant Title : SW846 8260

TIC Library : C:\DATABASE\NIST11.L  
TIC Integration Parameters: LSCINT.P

No Library Search Compounds Detected

\*\*\*\*\*

Data Path : Z:\VOASRV\HPCHEM1\MSVOA\_W\DATA\VW011119\  
Data File : VW008196.D  
Acq On : 11 Jan 2019 16:13  
Operator : SY/VA  
Sample : K1088-01  
Misc : 5.02G/5ML/MSVOA\_W/SOIL  
ALS Vial : 6 Sample Multiplier: 1

Instrument :  
MSVOA\_W  
ClientSampleId :  
CPSB-07(15-20)

Quant Method : Z:\VOASRV\HPCHEM1\MSVOA\_W\METHOD\82W010819S.M  
Quant Title : SW846 8260

TIC Library : C:\DATABASE\NIST11.L  
TIC Integration Parameters: LSCINT.P

TIC Top Hit name	RT	EstConc	Units	Response	--Internal Standard--			
					#	RT	Resp	Conc

---