

Data Path : Z:\voasrv\HPCHEM1\MSVOA\_W\Data\VW011122\  
 Data File : VW021851.D  
 Acq On : 11 Jan 2022 22:56  
 Operator : SY/VA  
 Sample : VIBLK583  
 Misc : 5.00g/10mL/MSVOA\_W/SOIL  
 ALS Vial : 1 Sample Multiplier: 1

Instrument :  
 MSVOA\_W  
 ClientSampleId :  
 VIBLK583

Quant Time: Jan 12 00:53:40 2022  
 Quant Method : Z:\voasrv\HPCHEM1\MSVOA\_W\Method\SFAMWLM011122SMA.M  
 Quant Title : SFAM01.0  
 QLast Update : Wed Jan 12 00:49:08 2022  
 Response via : Initial Calibration

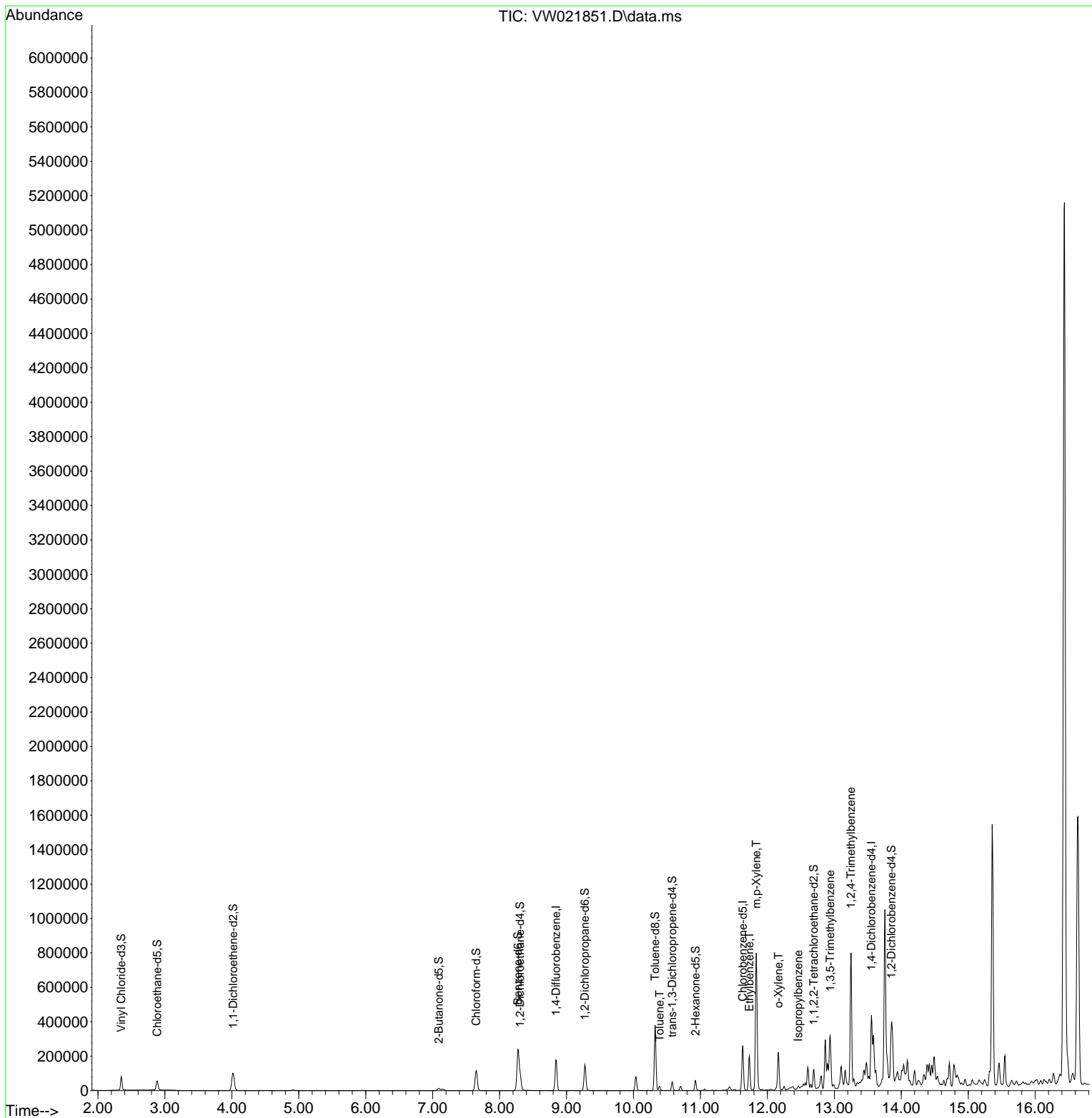
Compound	R.T.	QIon	Response	Conc	Units	Dev(Min)
-----						
Internal Standards						
1) 1,4-Difluorobenzene	8.841	114	169357	25.000	ug/L	# 0.00
28) Chlorobenzene-d5	11.634	117	161250	25.000	ug/L	# 0.00
58) 1,4-Dichlorobenzene-d4	13.554	152	99471	25.000	ug/L	0.00
System Monitoring Compounds						
4) Vinyl Chloride-d3	2.349	65	74193	23.570	ug/L	0.00
Spiked Amount	25.000	Range 30 - 150	Recovery =	94.280%		
7) Chloroethane-d5	2.885	69	57297	20.157	ug/L	0.00
Spiked Amount	25.000	Range 30 - 150	Recovery =	80.640%		
11) 1,1-Dichloroethene-d2	4.019	63	93676	18.850	ug/L	0.00
Spiked Amount	25.000	Range 45 - 110	Recovery =	75.400%		
21) 2-Butanone-d5	7.092	46	23448	52.776	ug/L	0.00
Spiked Amount	50.000	Range 20 - 135	Recovery =	105.560%		
24) Chloroform-d	7.653	84	119731	21.884	ug/L	0.00
Spiked Amount	25.000	Range 40 - 150	Recovery =	87.520%		
26) 1,2-Dichloroethane-d4	8.305	65	59890	22.668	ug/L	0.00
Spiked Amount	25.000	Range 70 - 130	Recovery =	90.680%		
32) Benzene-d6	8.275	84	255145	24.385	ug/L	0.00
Spiked Amount	25.000	Range 20 - 135	Recovery =	97.560%		
36) 1,2-Dichloropropane-d6	9.274	67	67436	24.453	ug/L	0.00
Spiked Amount	25.000	Range 70 - 120	Recovery =	97.800%		
41) Toluene-d8	10.323	98	256435	24.312	ug/L	0.00
Spiked Amount	25.000	Range 30 - 130	Recovery =	97.240%		
43) trans-1,3-Dichloroprop...	10.579	79	26556	22.680	ug/L	0.00
Spiked Amount	25.000	Range 30 - 135	Recovery =	90.720%		
47) 2-Hexanone-d5	10.926	63	20642	55.162	ug/L	0.00
Spiked Amount	50.000	Range 20 - 135	Recovery =	110.320%		
56) 1,1,2,2-Tetrachloroeth...	12.694	84	49445	22.928	ug/L	0.00
Spiked Amount	25.000	Range 45 - 120	Recovery =	91.720%		
66) 1,2-Dichlorobenzene-d4	13.853	152	96635	23.627	ug/L	0.00
Spiked Amount	25.000	Range 75 - 120	Recovery =	94.520%		
-----						
Target Compounds						Qvalue
42) Toluene	10.390	91	19693	1.776	ug/L	99
52) Ethylbenzene	11.731	91	145400	11.803	ug/L	94
53) m,p-Xylene	11.835	106	258809	50.241	ug/L	80
54) o-Xylene	12.164	106	62875	13.147	ug/L	86
60) Isopropylbenzene	12.463	105	11101	0.820	ug/L #	90
62) 1,3,5-Trimethylbenzene	12.938	105	109028	9.720	ug/L	92
63) 1,2,4-Trimethylbenzene	13.249	105	439359	39.716	ug/L	92
-----						

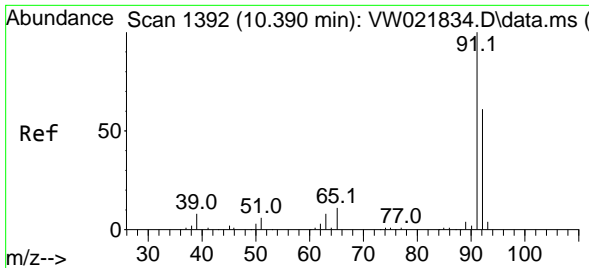
(#) = qualifier out of range (m) = manual integration (+) = signals summed

Data Path : Z:\voasrv\HPCHEM1\MSVOA\_W\Data\VW011122\  
 Data File : VW021851.D  
 Acq On : 11 Jan 2022 22:56  
 Operator : SY/VA  
 Sample : VIBLK583  
 Misc : 5.00g/10mL/MSVOA\_W/SOIL  
 ALS Vial : 1 Sample Multiplier: 1

Instrument :  
 MSVOA\_W  
 ClientSampleId :  
 VIBLK583

Quant Time: Jan 12 00:53:40 2022  
 Quant Method : Z:\voasrv\HPCHEM1\MSVOA\_W\Method\SFAMWLM011122SMA.M  
 Quant Title : SFAM01.0  
 QLast Update : Wed Jan 12 00:49:08 2022  
 Response via : Initial Calibration

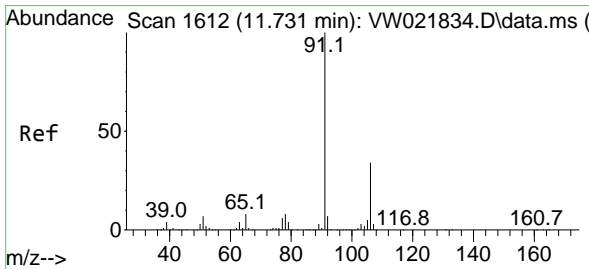
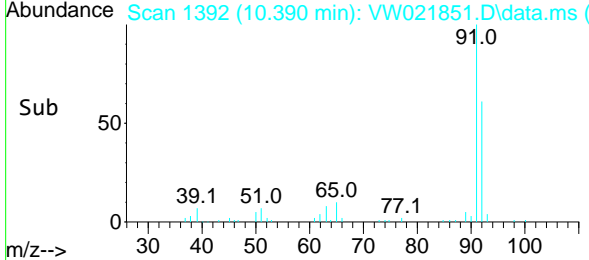
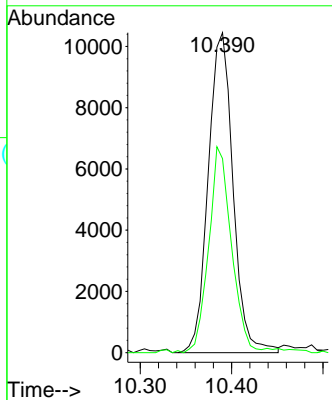
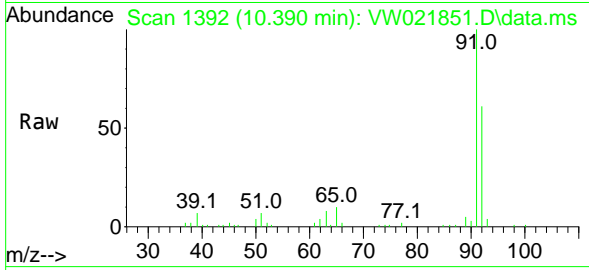




#42  
 Toluene  
 Concen: 1.776 ug/L  
 RT: 10.390 min Scan# 11  
 Delta R.T. -0.000 min  
 Lab File: VW021851.D  
 Acq: 11 Jan 2022 22:56

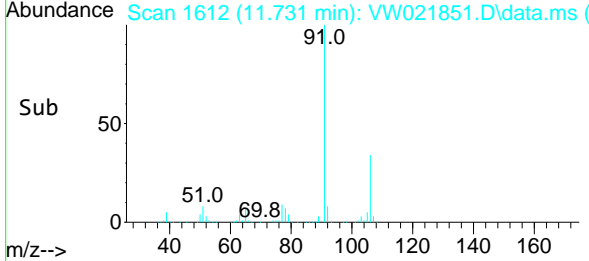
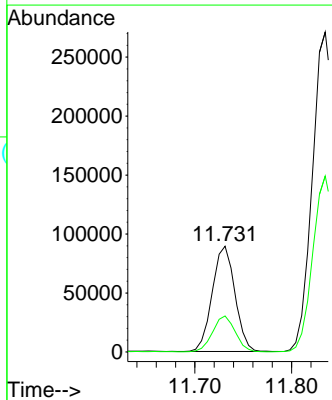
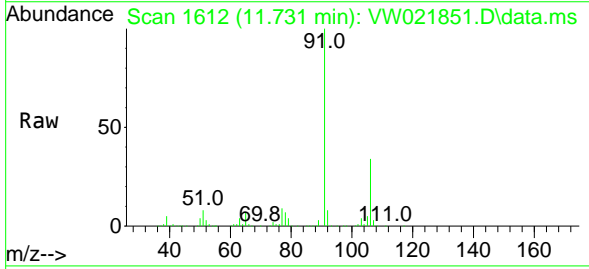
Instrument : MSVOA\_W  
 ClientSampleId : VIBLK583

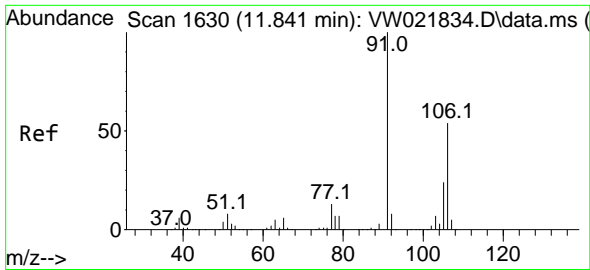
Tgt Ion: 91 Resp: 19693  
 Ion Ratio Lower Upper  
 91 100  
 92 60.7 41.7 77.5



#52  
 Ethylbenzene  
 Concen: 11.803 ug/L  
 RT: 11.731 min Scan# 1612  
 Delta R.T. -0.000 min  
 Lab File: VW021851.D  
 Acq: 11 Jan 2022 22:56

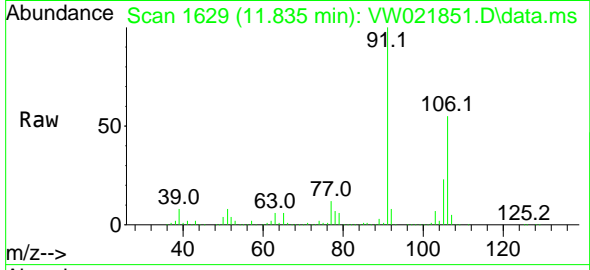
Tgt Ion: 91 Resp: 145400  
 Ion Ratio Lower Upper  
 91 100  
 106 34.0 21.5 39.9



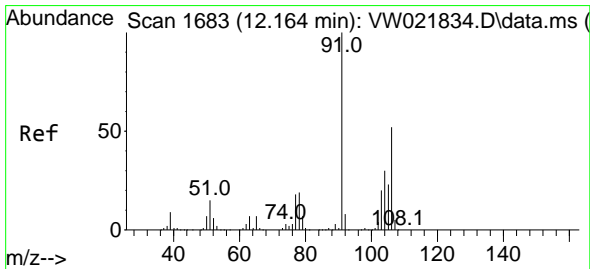
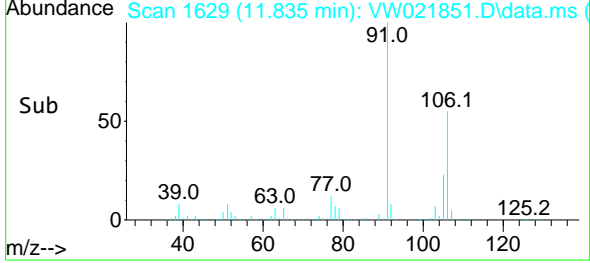
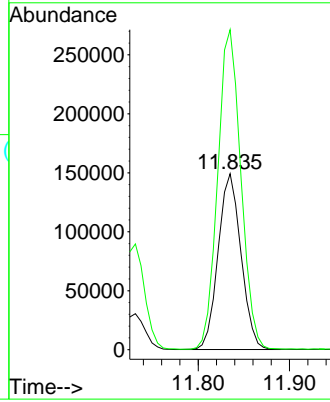


#53  
 m,p-Xylene  
 Concen: 50.241 ug/L  
 RT: 11.835 min Scan# 1629  
 Delta R.T. -0.006 min  
 Lab File: VW021851.D  
 Acq: 11 Jan 2022 22:56

Instrument : MSVOA\_W  
 ClientSampleId : VIBLK583

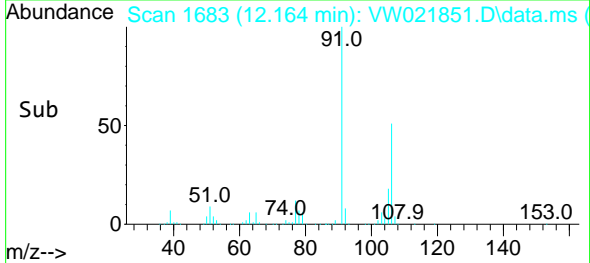
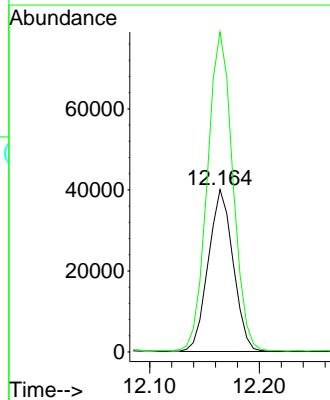
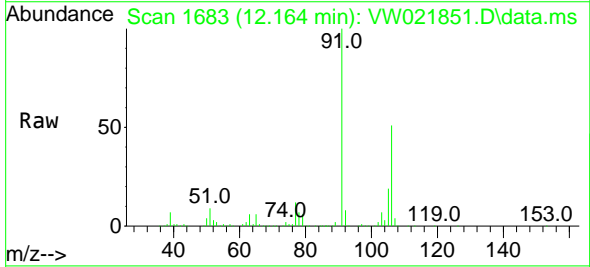


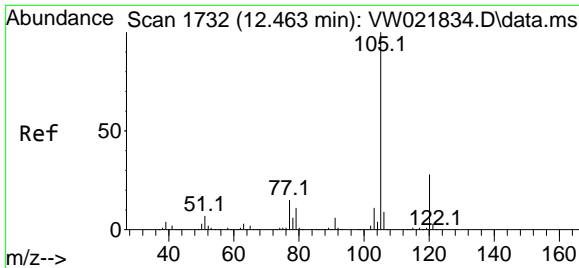
Tgt Ion:106 Resp: 258809  
 Ion Ratio Lower Upper  
 106 100  
 91 181.7 149.9 278.3



#54  
 o-Xylene  
 Concen: 13.147 ug/L  
 RT: 12.164 min Scan# 1683  
 Delta R.T. -0.000 min  
 Lab File: VW021851.D  
 Acq: 11 Jan 2022 22:56

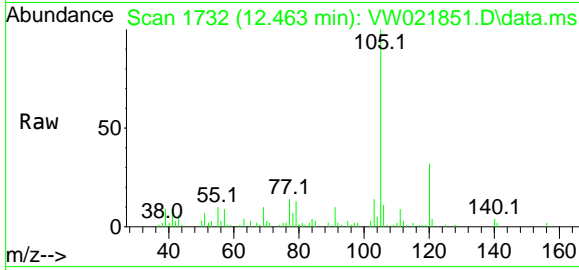
Tgt Ion:106 Resp: 62875  
 Ion Ratio Lower Upper  
 106 100  
 91 197.0 153.6 285.3





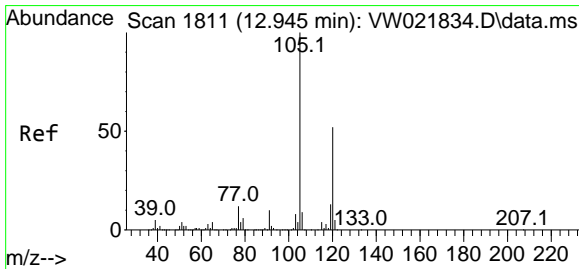
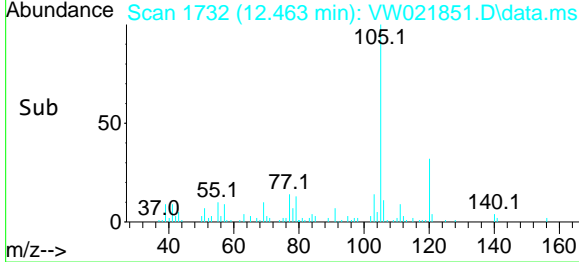
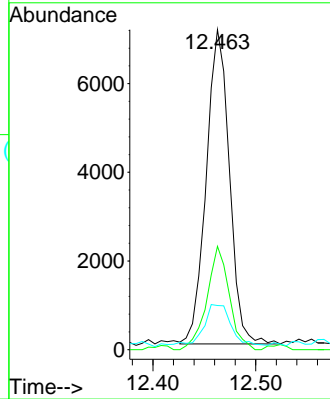
#60  
 Isopropylbenzene  
 Concen: 0.820 ug/L  
 RT: 12.463 min Scan# 111101  
 Delta R.T. -0.000 min  
 Lab File: VW021851.D  
 Acq: 11 Jan 2022 22:56

Instrument : MSVOA\_W  
 ClientSampleId : VIBLK583



Tgt Ion:105 Resp: 11101

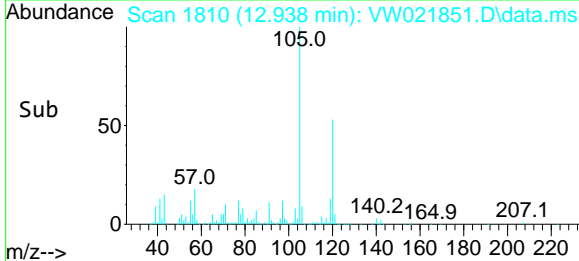
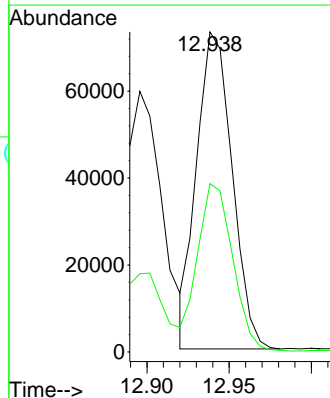
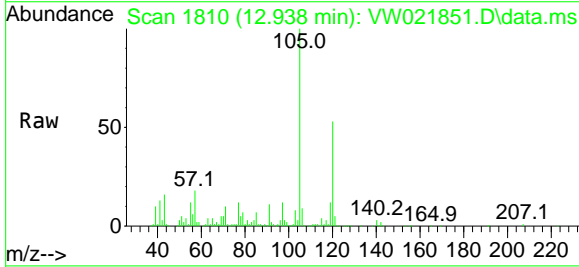
Ion	Ratio	Lower	Upper
105	100		
120	31.5	20.1	30.1#
77	14.4	13.8	20.8

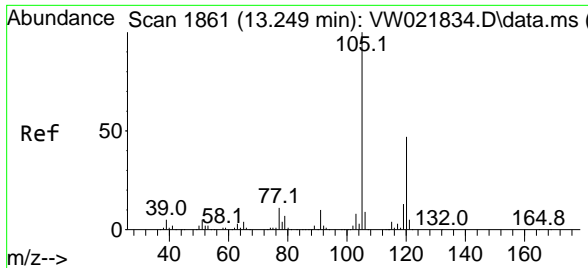


#62  
 1,3,5-Trimethylbenzene  
 Concen: 9.720 ug/L  
 RT: 12.938 min Scan# 1810  
 Delta R.T. -0.006 min  
 Lab File: VW021851.D  
 Acq: 11 Jan 2022 22:56

Tgt Ion:105 Resp: 109028

Ion	Ratio	Lower	Upper
105	100		
120	52.3	37.4	56.2





#63  
 1,2,4-Trimethylbenzene  
 Concen: 39.716 ug/L  
 RT: 13.249 min Scan# 11  
 Delta R.T. -0.000 min  
 Lab File: VW021851.D  
 Acq: 11 Jan 2022 22:56

Instrument : MSVOA\_W  
 ClientSampleId : VIBLK583

Tgt Ion:105 Resp: 439359  
 Ion Ratio Lower Upper  
 105 100  
 120 48.9 35.0 52.6

