

Data Path : Z:\voasrv\HPCHEM1\MSVOA_W\Data\VW011322\
 Data File : VW021877.D
 Acq On : 13 Jan 2022 08:39
 Operator : SY/VA
 Sample : VSTDCCC025
 Misc : 5.00g/10mL/MSVOA_W/SOIL
 ALS Vial : 1 Sample Multiplier: 1

Instrument :
 MSVOA_W
 ClientSampleId :
 VSTD025534

Quant Time: Jan 14 00:53:27 2022
 Quant Method : Z:\voasrv\HPCHEM1\MSVOA_W\Method\SFAMWLM011122SMA.M
 Quant Title : SFAM01.0
 QLast Update : Wed Jan 12 23:48:31 2022
 Response via : Initial Calibration

Compound	R.T.	QIon	Response	Conc	Units	Dev(Min)
Internal Standards						
1) 1,4-Difluorobenzene	8.842	114	133299	25.000	ug/L	# 0.00
28) Chlorobenzene-d5	11.628	117	130707	25.000	ug/L	# 0.00
58) 1,4-Dichlorobenzene-d4	13.554	152	73991	25.000	ug/L	0.00
System Monitoring Compounds						
4) Vinyl Chloride-d3	2.349	65	60855	24.562	ug/L	0.00
Spiked Amount	25.000	Range 30 - 150	Recovery	=	98.240%	
7) Chloroethane-d5	2.885	69	45546	20.358	ug/L	0.00
Spiked Amount	25.000	Range 30 - 150	Recovery	=	81.440%	
11) 1,1-Dichloroethene-d2	4.019	63	100479	25.688	ug/L	0.00
Spiked Amount	25.000	Range 45 - 110	Recovery	=	102.760%	
21) 2-Butanone-d5	7.086	46	21048	60.189	ug/L	0.00
Spiked Amount	50.000	Range 20 - 135	Recovery	=	120.380%	
24) Chloroform-d	7.647	84	111708	25.940	ug/L	0.00
Spiked Amount	25.000	Range 40 - 150	Recovery	=	103.760%	
26) 1,2-Dichloroethane-d4	8.305	65	55979	26.919	ug/L	0.00
Spiked Amount	25.000	Range 70 - 130	Recovery	=	107.680%	
32) Benzene-d6	8.275	84	223500	26.352	ug/L	0.00
Spiked Amount	25.000	Range 20 - 135	Recovery	=	105.400%	
36) 1,2-Dichloropropane-d6	9.274	67	58359	26.106	ug/L	0.00
Spiked Amount	25.000	Range 70 - 120	Recovery	=	104.440%	
41) Toluene-d8	10.323	98	220559	25.797	ug/L	0.00
Spiked Amount	25.000	Range 30 - 130	Recovery	=	103.200%	
43) trans-1,3-Dichloroprop...	10.579	79	25168	26.517	ug/L	0.00
Spiked Amount	25.000	Range 30 - 135	Recovery	=	106.080%	
47) 2-Hexanone-d5	10.927	63	19718	65.005	ug/L	0.00
Spiked Amount	50.000	Range 20 - 135	Recovery	=	130.020%	
56) 1,1,2,2-Tetrachloroeth...	12.688	84	49466	28.298	ug/L	0.00
Spiked Amount	25.000	Range 45 - 120	Recovery	=	113.200%	
66) 1,2-Dichlorobenzene-d4	13.853	152	80774	26.549	ug/L	0.00
Spiked Amount	25.000	Range 75 - 120	Recovery	=	106.200%	
Target Compounds						
2) Dichlorodifluoromethane	2.007	85	13384	25.469	ug/L	98
3) Chloromethane	2.215	50	42915	22.524	ug/L	96
5) Vinyl chloride	2.361	62	61368	22.421	ug/L	99
6) Bromomethane	2.782	94	40385	20.867	ug/L	100
8) Chloroethane	2.922	64	30527	18.455	ug/L	97
9) Trichlorofluoromethane	3.263	101	41519	20.413	ug/L	96
10) 1,1,2-Trichloro-1,2,2-...	4.062	101	55237	24.949	ug/L	91
12) 1,1-Dichloroethene	4.038	96	48444	24.348	ug/L	81
13) Acetone	4.147	43	12816	44.359	ug/L	85
14) Carbon disulfide	4.385	76	123028	23.618	ug/L	99
15) Methyl Acetate	4.678	43	16607	28.440	ug/L	# 88
16) Methylene chloride	4.915	84	49309	21.615	ug/L	78
17) trans-1,2-Dichloroethene	5.422	96	52836	24.575	ug/L	77
18) Methyl tert-butyl Ether	5.434	73	72153	26.317	ug/L	# 91
19) 1,1-Dichloroethane	6.214	63	80485	25.527	ug/L	98
20) cis-1,2-Dichloroethene	7.171	96	56786	25.675	ug/L	69
22) 2-Butanone	7.177	43	20542	55.625	ug/L	81
23) Bromochloromethane	7.519	128	27726	25.194	ug/L	# 57
25) Chloroform	7.671	83	94549	25.344	ug/L	98

Data Path : Z:\voasrv\HPCHEM1\MSVOA_W\Data\VW011322\
 Data File : VW021877.D
 Acq On : 13 Jan 2022 08:39
 Operator : SY/VA
 Sample : VSTDCCC025
 Misc : 5.00g/10mL/MSVOA_W/SOIL
 ALS Vial : 1 Sample Multiplier: 1

Instrument :
 MSVOA_W
 ClientSampleId :
 VSTD025534

Quant Time: Jan 14 00:53:27 2022
 Quant Method : Z:\voasrv\HPCHEM1\MSVOA_W\Method\SFAMWLM011122SMA.M
 Quant Title : SFAM01.0
 QLast Update : Wed Jan 12 23:48:31 2022
 Response via : Initial Calibration

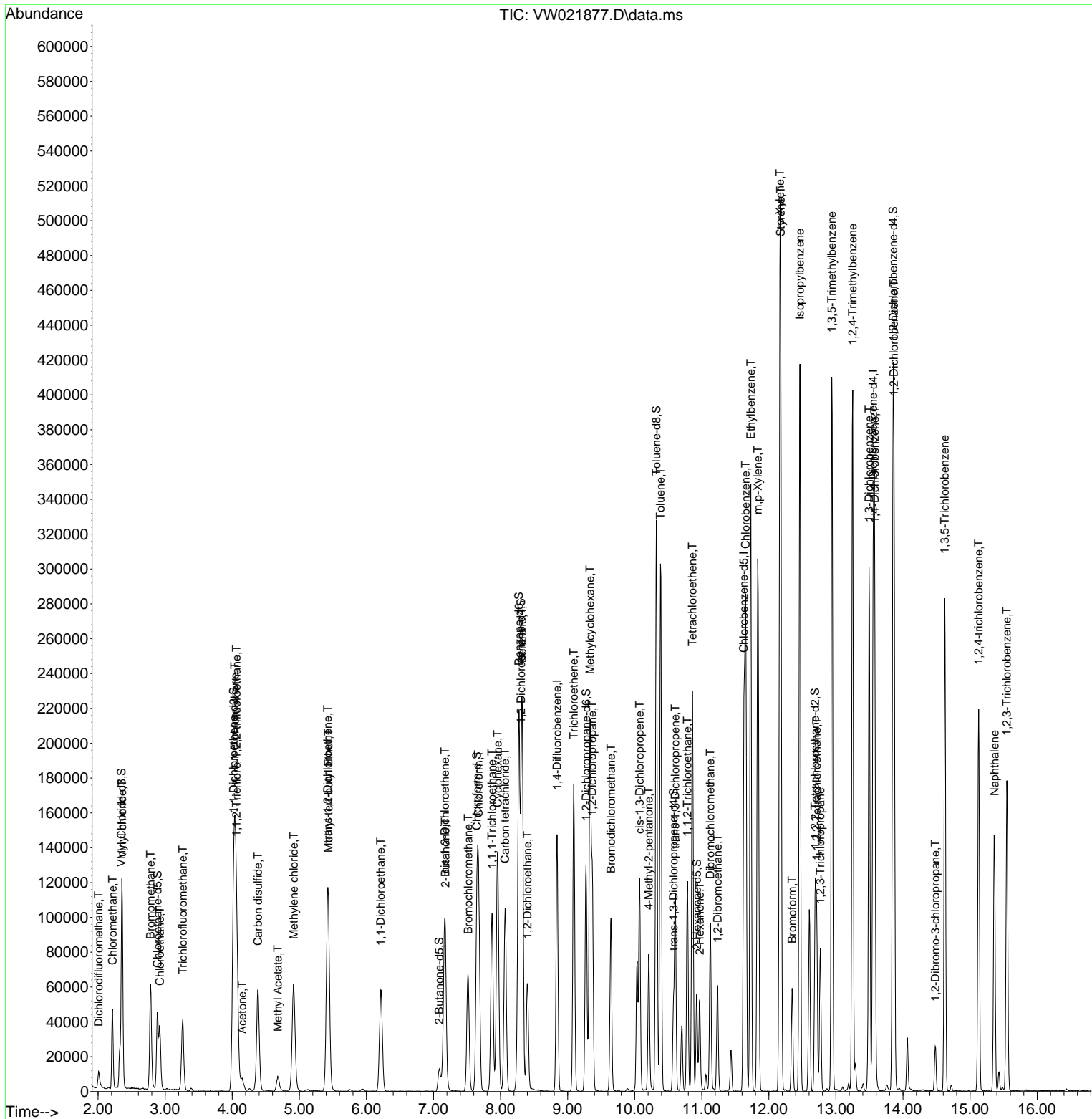
Compound	R.T.	QIon	Response	Conc	Units	Dev(Min)
27) 1,2-Dichloroethane	8.403	62	55120	25.514	ug/L #	94
29) Cyclohexane	7.958	56	75128	25.693	ug/L #	77
30) 1,1,1-Trichloroethane	7.872	97	84440	24.923	ug/L #	92
31) Carbon tetrachloride	8.067	117	81963	24.965	ug/L	98
33) Benzene	8.323	78	201271	25.113	ug/L	100
34) Trichloroethene	9.092	95	57912	24.906	ug/L	86
35) Methylcyclohexane	9.335	83	95649	25.014	ug/L #	82
37) 1,2-Dichloropropane	9.366	63	44378	25.416	ug/L #	94
38) Bromodichloromethane	9.646	83	64293	26.377	ug/L #	96
39) cis-1,3-Dichloropropene	10.073	75	70589	26.018	ug/L	98
40) 4-Methyl-2-pentanone	10.207	43	46853	57.123	ug/L #	85
42) Toluene	10.384	91	231336	25.735	ug/L	96
44) trans-1,3-Dichloropropene	10.604	75	60824	26.786	ug/L	98
45) 1,1,2-Trichloroethane	10.786	97	38524	25.987	ug/L	94
46) Tetrachloroethene	10.860	164	54160	23.554	ug/L	96
48) 2-Hexanone	10.969	43	31649	56.396	ug/L #	89
49) Dibromochloromethane	11.128	129	50322	26.940	ug/L	91
50) 1,2-Dibromoethane	11.238	107	39246	26.671	ug/L #	99
51) Chlorobenzene	11.652	112	154593	24.357	ug/L	91
52) Ethylbenzene	11.731	91	255205	25.557	ug/L	95
53) m,p-Xylene	11.835	106	106020	25.390	ug/L	89
54) o-Xylene	12.164	106	100329	25.881	ug/L	89
55) Styrene	12.176	104	166186	25.967	ug/L	89
57) 1,1,2,2-Tetrachloroethane	12.713	83	43166	27.063	ug/L #	96
59) Bromoform	12.347	173	27098	26.862	ug/L #	98
60) Isopropylbenzene	12.463	105	278135	27.604	ug/L	94
61) 1,2,3-Trichloropropane	12.768	75	31008	29.325	ug/L #	88
62) 1,3,5-Trimethylbenzene	12.938	105	230030	27.569	ug/L	92
63) 1,2,4-Trimethylbenzene	13.249	105	224539	27.287	ug/L	94
64) 1,3-Dichlorobenzene	13.493	146	131726	26.003	ug/L	93
65) 1,4-Dichlorobenzene	13.579	146	127195	25.430	ug/L	94
67) 1,2-Dichlorobenzene	13.865	146	115117	25.954	ug/L	97
68) 1,2-Dibromo-3-chloropr...	14.481	75	6479	31.729	ug/L #	68
69) 1,3,5-Trichlorobenzene	14.621	180	91013	24.172	ug/L	98
70) 1,2,4-trichlorobenzene	15.127	180	75540	25.179	ug/L	96
71) Naphthalene	15.365	128	133294	28.802	ug/L	100
72) 1,2,3-Trichlorobenzene	15.548	180	64858	26.179	ug/L	98

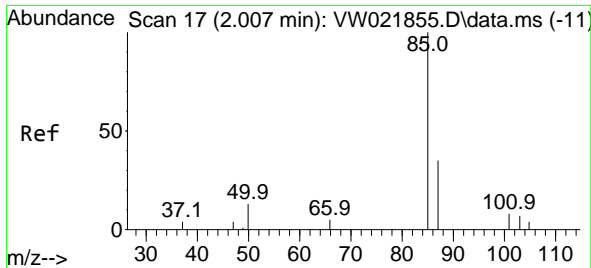
(#) = qualifier out of range (m) = manual integration (+) = signals summed

Data Path : Z:\voasrv\HPCHEM1\MSVOA_W\Data\VW011322\
 Data File : VW021877.D
 Acq On : 13 Jan 2022 08:39
 Operator : SY/VA
 Sample : VSTDCCC025
 Misc : 5.00g/10mL/MSVOA_W/SOIL
 ALS Vial : 1 Sample Multiplier: 1

Instrument :
 MSVOA_W
 ClientSampleId :
 VSTD025534

Quant Time: Jan 14 00:53:27 2022
 Quant Method : Z:\voasrv\HPCHEM1\MSVOA_W\Method\SFAMWLM011122SMA.M
 Quant Title : SFAM01.0
 QLast Update : Wed Jan 12 23:48:31 2022
 Response via : Initial Calibration

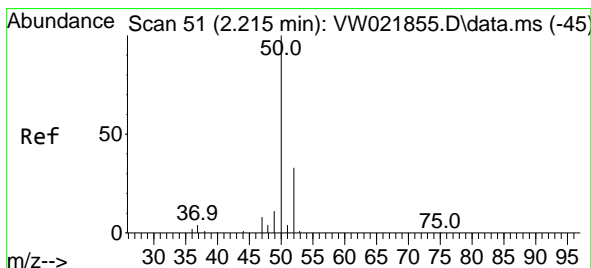
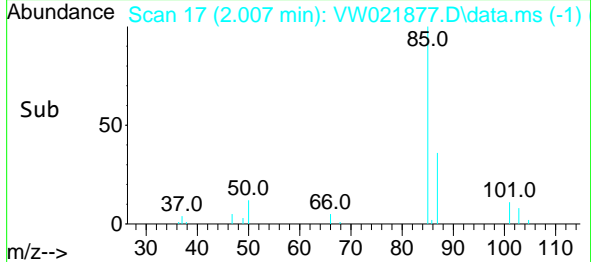
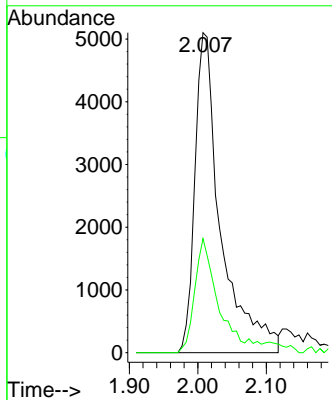
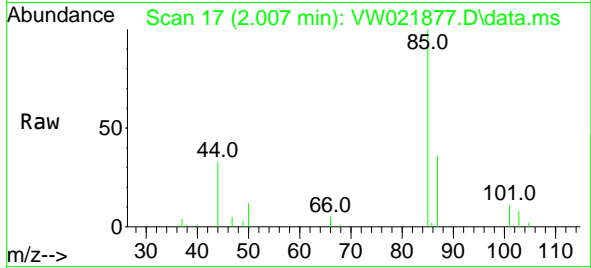




#2
 Dichlorodifluoromethane
 Concen: 25.469 ug/L
 RT: 2.007 min Scan# 11
 Delta R.T. 0.000 min
 Lab File: VW021877.D
 Acq: 13 Jan 2022 08:39

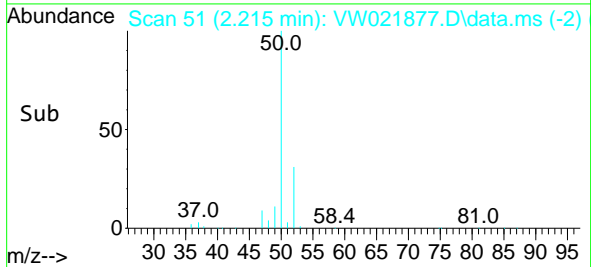
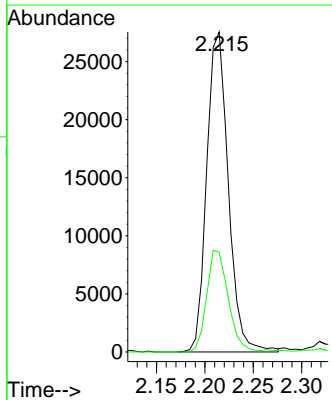
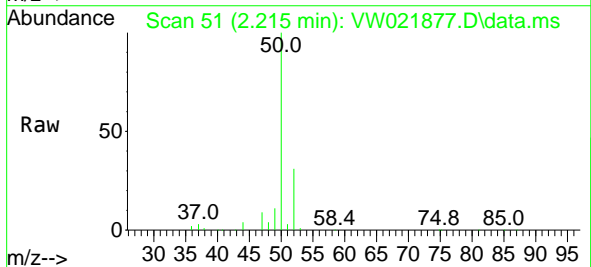
Instrument :
 MSVOA_W
 ClientSampleId :
 VSTD025534

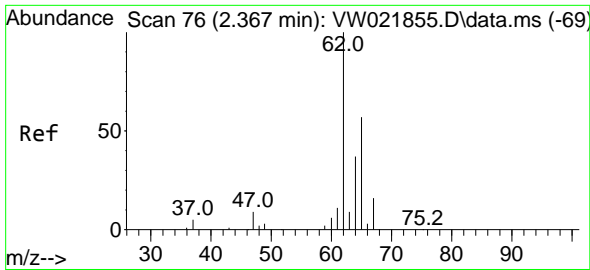
Tgt Ion: 85 Resp: 13384
 Ion Ratio Lower Upper
 85 100
 87 31.3 25.8 38.6



#3
 Chloromethane
 Concen: 22.524 ug/L
 RT: 2.215 min Scan# 51
 Delta R.T. 0.000 min
 Lab File: VW021877.D
 Acq: 13 Jan 2022 08:39

Tgt Ion: 50 Resp: 42915
 Ion Ratio Lower Upper
 50 100
 52 31.2 23.4 43.6

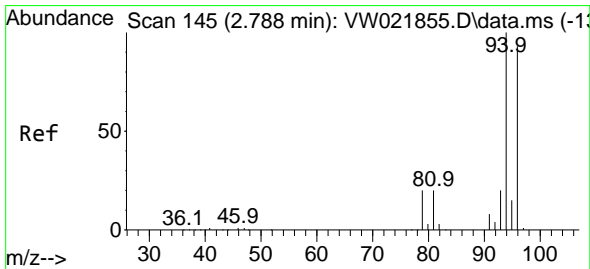
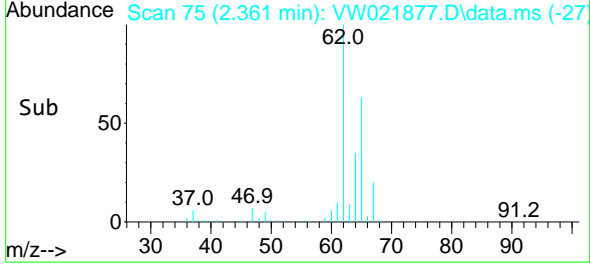
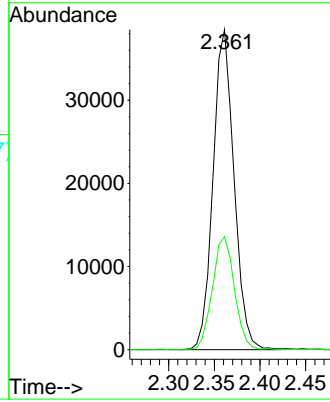
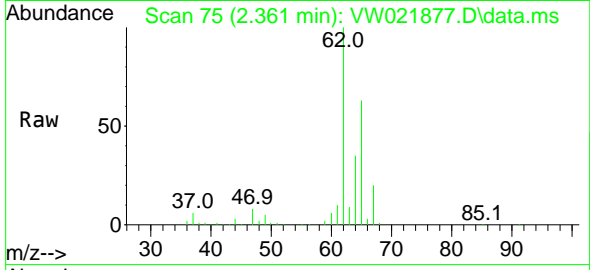




#5
 Vinyl chloride
 Concen: 22.421 ug/L
 RT: 2.361 min Scan# 71
 Delta R.T. -0.006 min
 Lab File: VW021877.D
 Acq: 13 Jan 2022 08:39

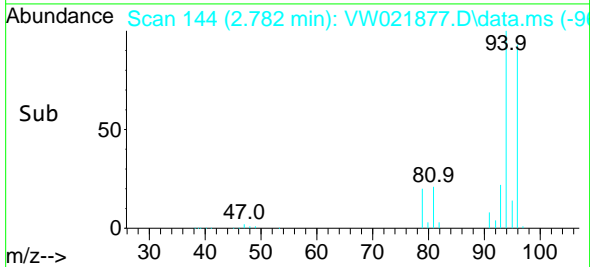
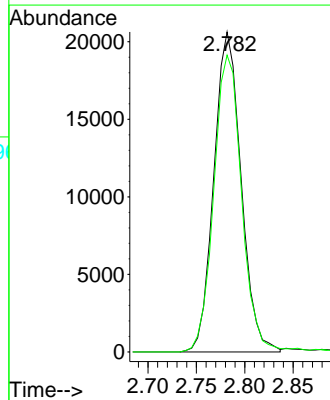
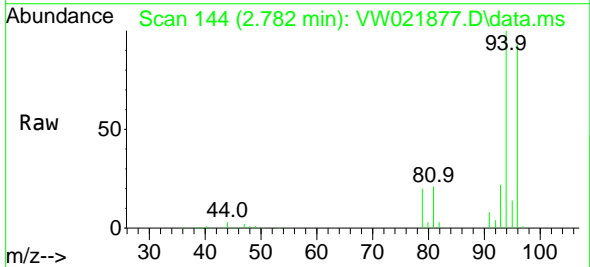
Instrument :
 MSVOA_W
 ClientSampleId :
 VSTD025534

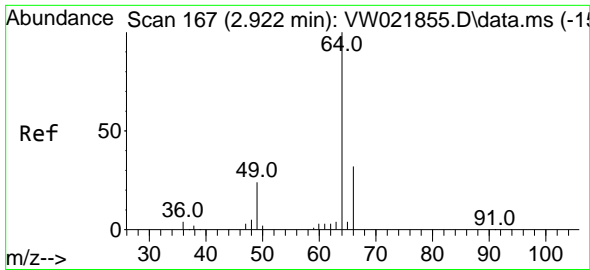
Tgt Ion: 62 Resp: 61368
 Ion Ratio Lower Upper
 62 100
 64 35.3 24.4 45.2



#6
 Bromomethane
 Concen: 20.867 ug/L
 RT: 2.782 min Scan# 144
 Delta R.T. -0.006 min
 Lab File: VW021877.D
 Acq: 13 Jan 2022 08:39

Tgt Ion: 94 Resp: 40385
 Ion Ratio Lower Upper
 94 100
 96 92.7 64.8 120.4

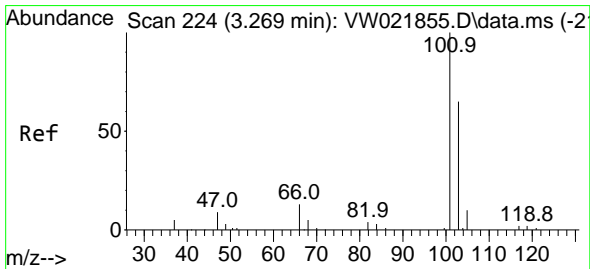
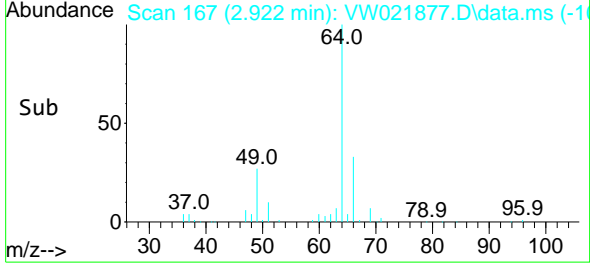
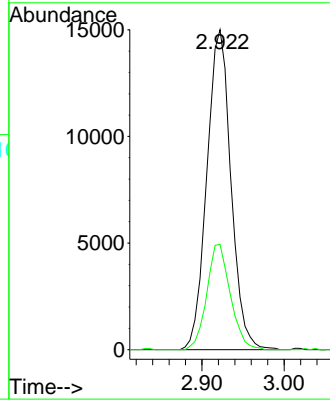
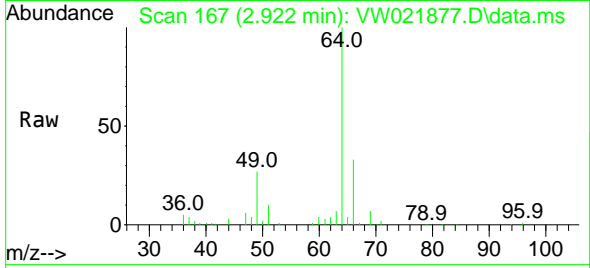




#8
 Chloroethane
 Concen: 18.455 ug/L
 RT: 2.922 min Scan# 1
 Delta R.T. 0.000 min
 Lab File: VW021877.D
 Acq: 13 Jan 2022 08:39

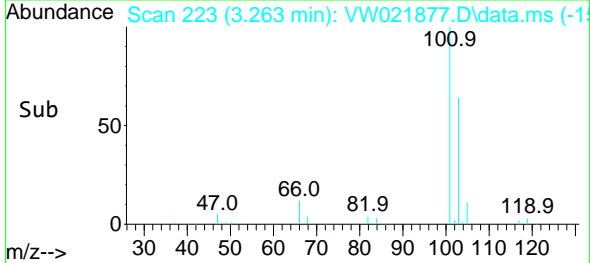
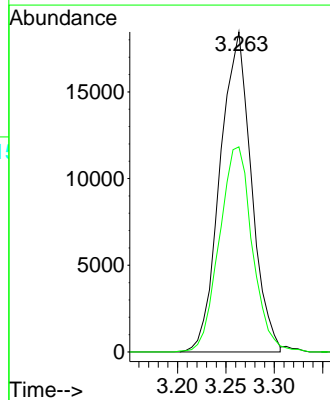
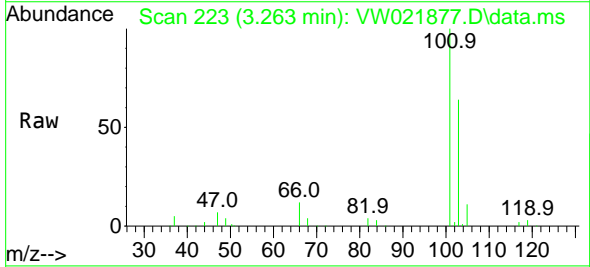
Instrument :
 MSVOA_W
 ClientSampleId :
 VSTD025534

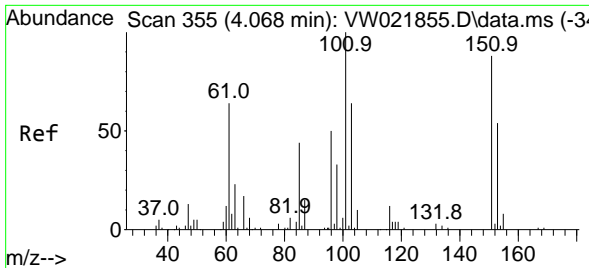
Tgt Ion: 64 Resp: 30527
 Ion Ratio Lower Upper
 64 100
 66 32.9 22.0 40.8



#9
 Trichlorofluoromethane
 Concen: 20.413 ug/L
 RT: 3.263 min Scan# 223
 Delta R.T. -0.006 min
 Lab File: VW021877.D
 Acq: 13 Jan 2022 08:39

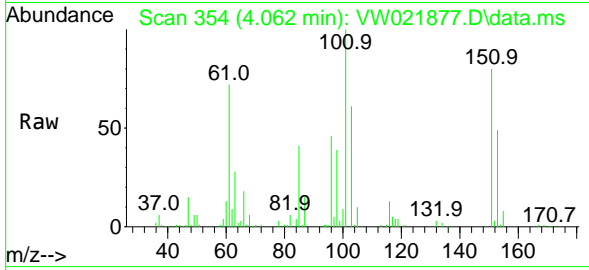
Tgt Ion:101 Resp: 41519
 Ion Ratio Lower Upper
 101 100
 103 67.7 51.4 77.2



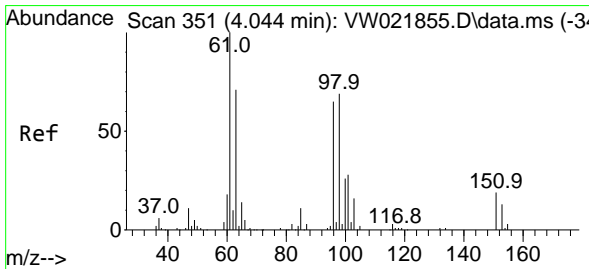
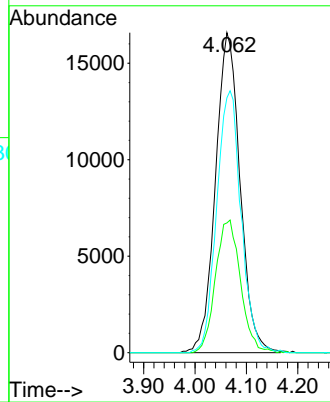
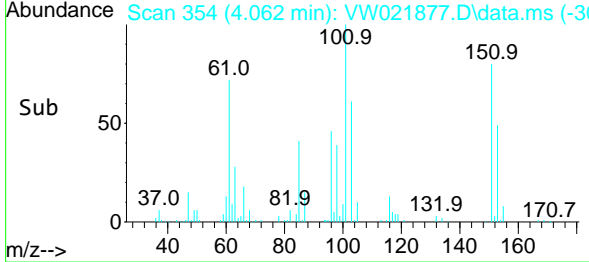


#10
 1,1,2-Trichloro-1,2,2-trifluoroethane
 Concen: 24.949 ug/L
 RT: 4.062 min Scan# 310
 Delta R.T. -0.006 min
 Lab File: VW021877.D
 Acq: 13 Jan 2022 08:39

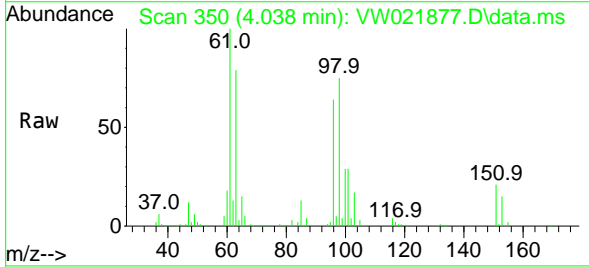
Instrument : MSVOA_W
 ClientSampleId : VSTD025534



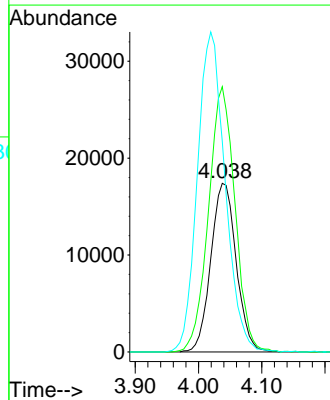
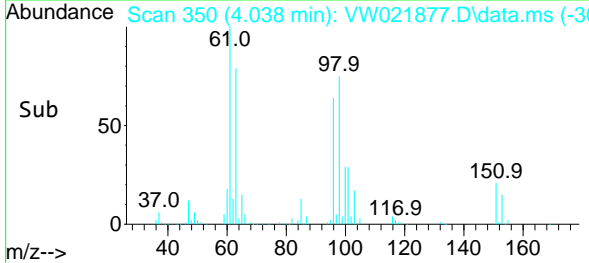
Tgt Ion:101 Resp: 55237
 Ion Ratio Lower Upper
 101 100
 85 42.1 36.6 54.8
 151 81.2 57.4 86.0

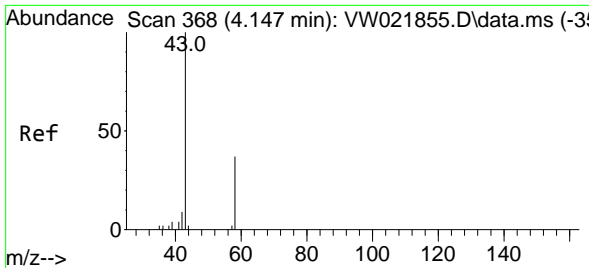


#12
 1,1-Dichloroethene
 Concen: 24.348 ug/L
 RT: 4.038 min Scan# 350
 Delta R.T. -0.006 min
 Lab File: VW021877.D
 Acq: 13 Jan 2022 08:39



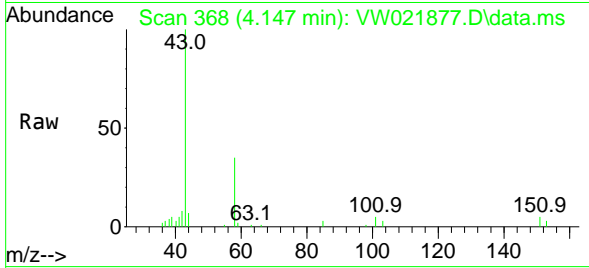
Tgt Ion: 96 Resp: 48444
 Ion Ratio Lower Upper
 96 100
 61 157.3 138.3 256.9
 63 124.9 82.6 153.4



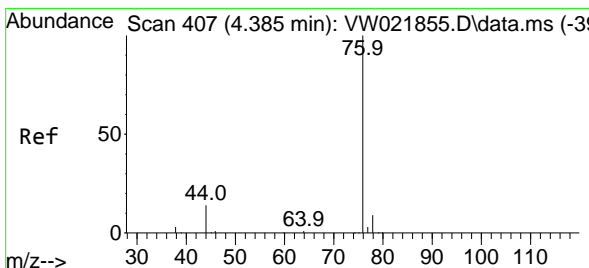
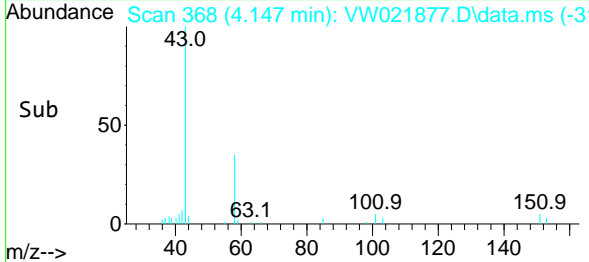
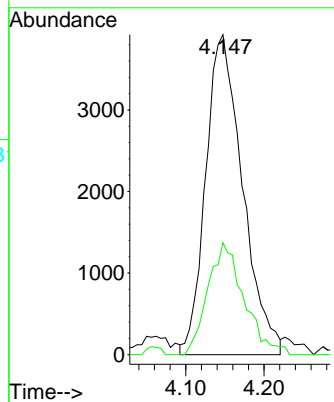


#13
 Acetone
 Concen: 44.359 ug/L
 RT: 4.147 min Scan# 368
 Delta R.T. 0.000 min
 Lab File: VW021877.D
 Acq: 13 Jan 2022 08:39

Instrument : MSVOA_W
 ClientSampleId : VSTD025534

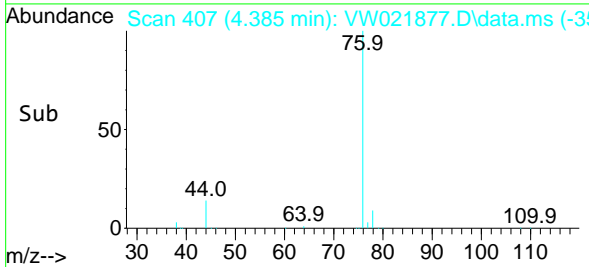
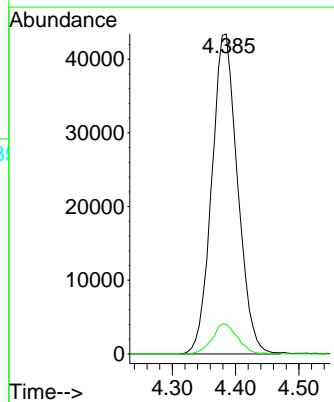
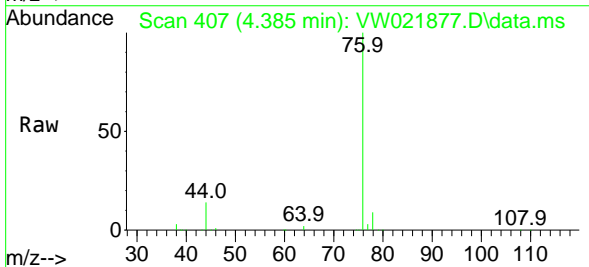


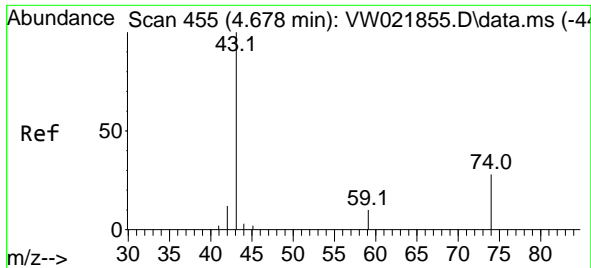
Tgt Ion: 43 Resp: 12816
 Ion Ratio Lower Upper
 43 100
 58 34.0 0.0 52.8



#14
 Carbon disulfide
 Concen: 23.618 ug/L
 RT: 4.385 min Scan# 407
 Delta R.T. 0.000 min
 Lab File: VW021877.D
 Acq: 13 Jan 2022 08:39

Tgt Ion: 76 Resp: 123028
 Ion Ratio Lower Upper
 76 100
 78 9.3 7.1 10.7

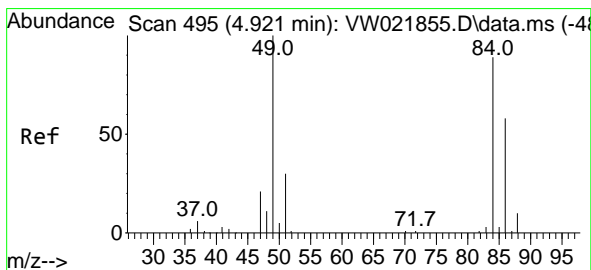
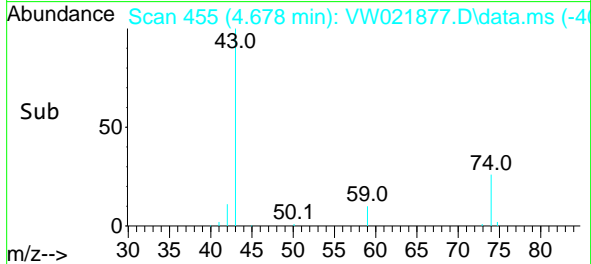
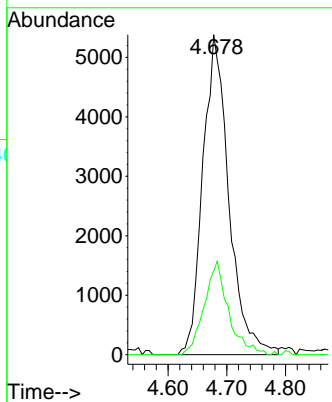
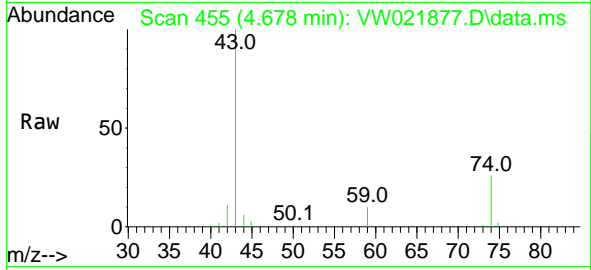




#15
 Methyl Acetate
 Concen: 28.440 ug/L
 RT: 4.678 min Scan# 411
 Delta R.T. 0.000 min
 Lab File: VW021877.D
 Acq: 13 Jan 2022 08:39

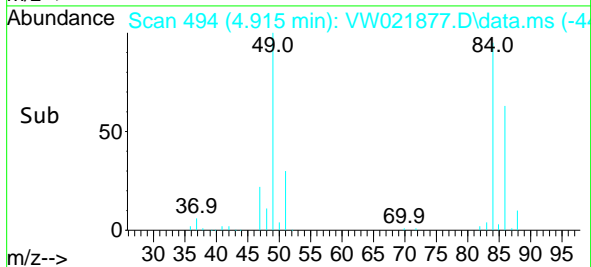
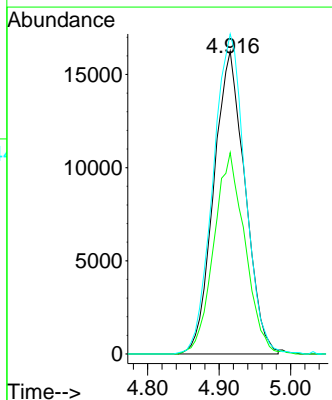
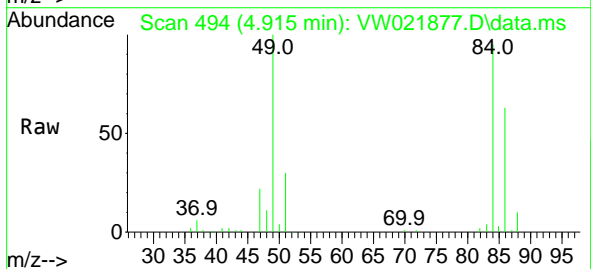
Instrument : MSVOA_W
 ClientSampleId : VSTD025534

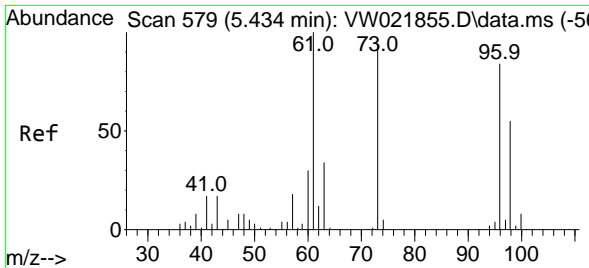
Tgt Ion: 43 Resp: 16607
 Ion Ratio Lower Upper
 43 100
 74 26.3 16.4 24.6#



#16
 Methylene chloride
 Concen: 21.615 ug/L
 RT: 4.915 min Scan# 494
 Delta R.T. -0.006 min
 Lab File: VW021877.D
 Acq: 13 Jan 2022 08:39

Tgt Ion: 84 Resp: 49309
 Ion Ratio Lower Upper
 84 100
 86 66.5 45.5 84.5
 49 105.7 100.5 186.7



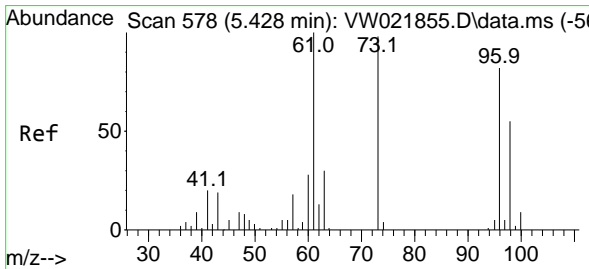
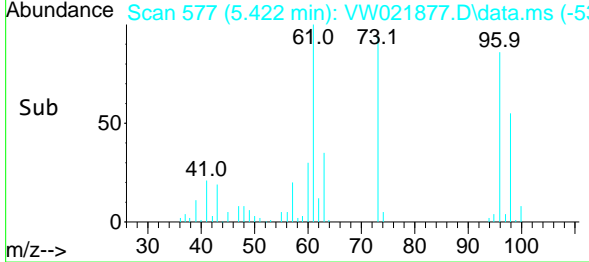
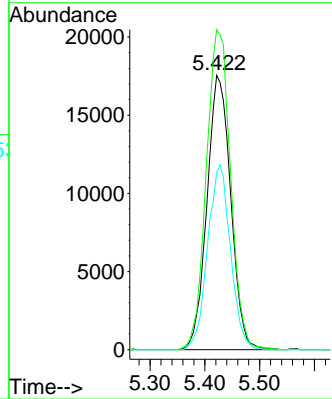
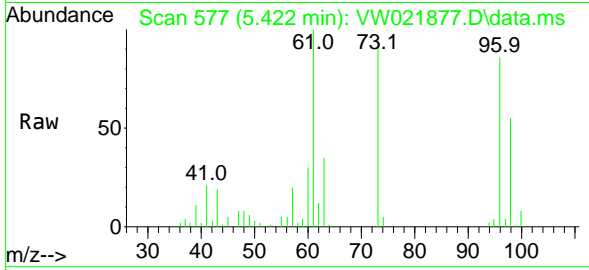


#17
 trans-1,2-Dichloroethene
 Concen: 24.575 ug/L
 RT: 5.422 min Scan# 577
 Delta R.T. -0.012 min
 Lab File: VW021877.D
 Acq: 13 Jan 2022 08:39

Instrument : MSVOA_W
 ClientSampleId : VSTD025534

Tgt Ion: 96 Resp: 52836

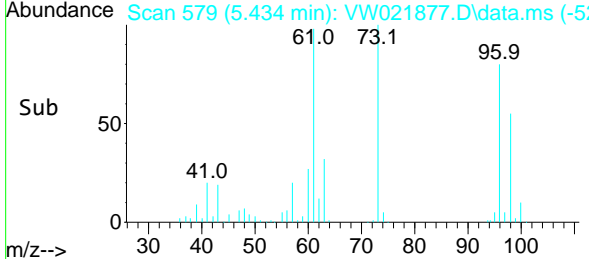
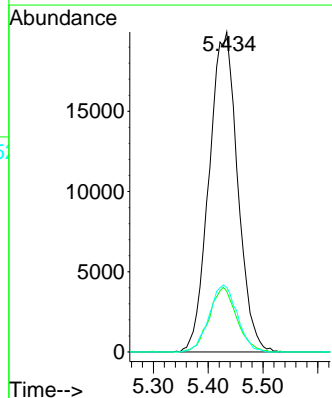
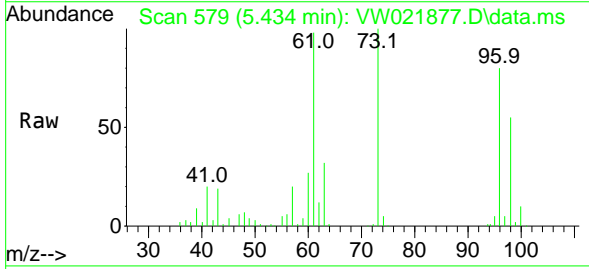
Ion	Ratio	Lower	Upper
96	100		
61	116.6	107.4	199.4
98	64.6	41.2	76.6

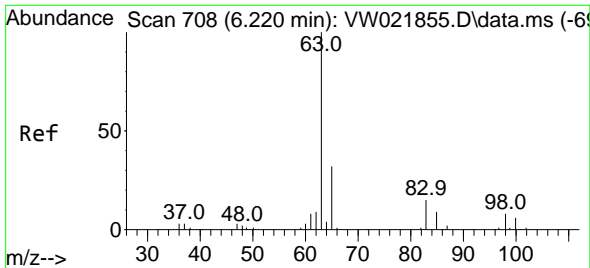


#18
 Methyl tert-butyl Ether
 Concen: 26.317 ug/L
 RT: 5.434 min Scan# 579
 Delta R.T. 0.006 min
 Lab File: VW021877.D
 Acq: 13 Jan 2022 08:39

Tgt Ion: 73 Resp: 72153

Ion	Ratio	Lower	Upper
73	100		
43	19.5	19.5	29.3#
57	20.6	19.3	28.9

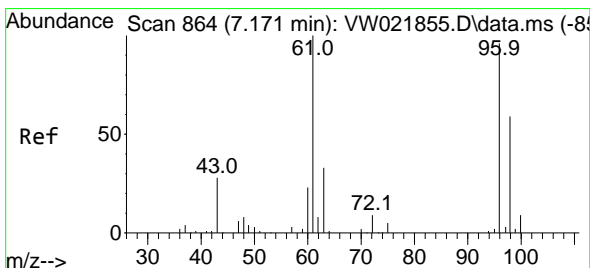
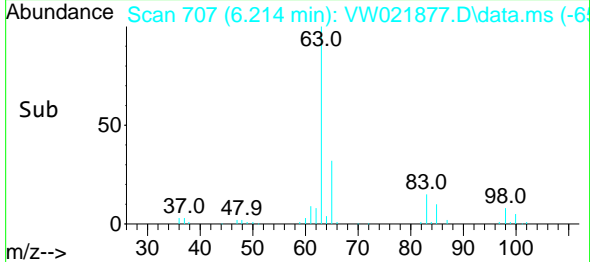
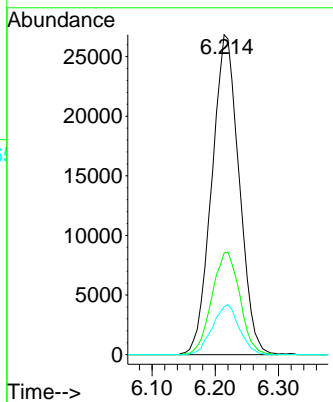
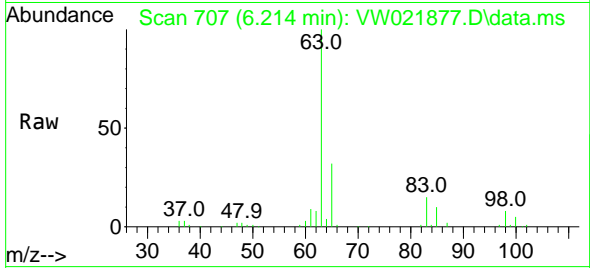




#19
 1,1-Dichloroethane
 Concen: 25.527 ug/L
 RT: 6.214 min Scan# 707
 Delta R.T. -0.006 min
 Lab File: VW021877.D
 Acq: 13 Jan 2022 08:39

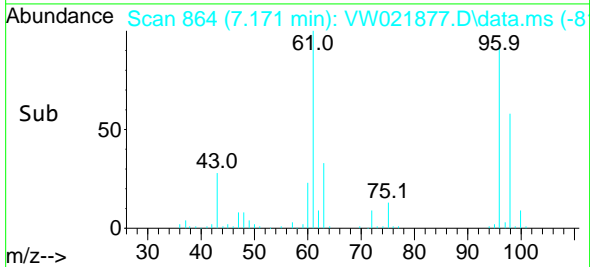
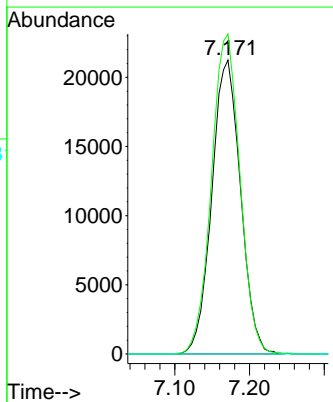
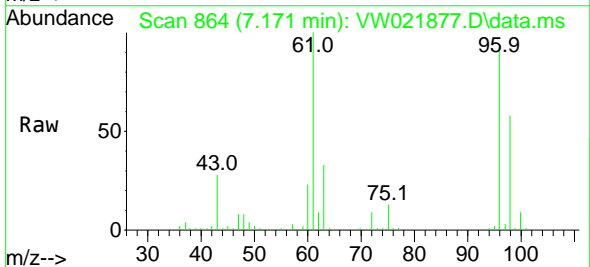
Instrument : MSVOA_W
 ClientSampleId : VSTD025534

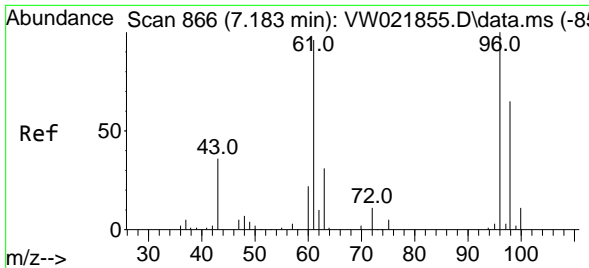
Tgt Ion	Resp	Lower	Upper
63	100		
65	31.8	22.1	41.1
83	15.0	9.2	17.2



#20
 cis-1,2-Dichloroethene
 Concen: 25.675 ug/L
 RT: 7.171 min Scan# 864
 Delta R.T. 0.000 min
 Lab File: VW021877.D
 Acq: 13 Jan 2022 08:39

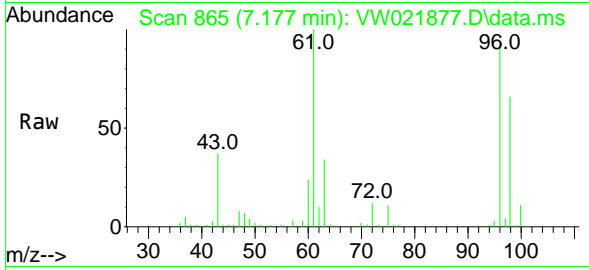
Tgt Ion	Resp	Lower	Upper
96	100		
61	108.9	103.7	192.7
68	0.0	0.0	0.0



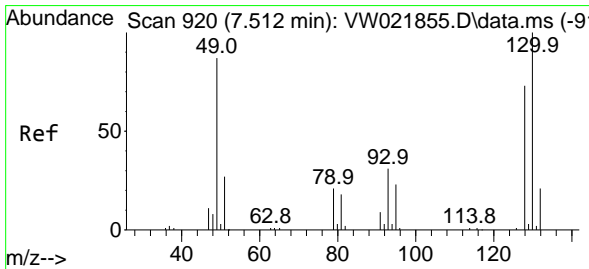
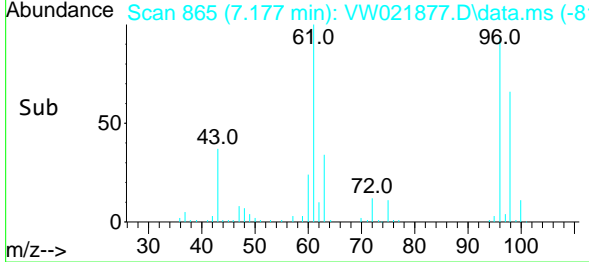
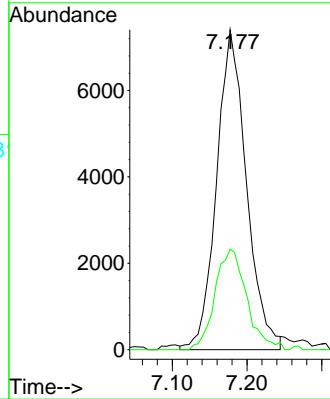


#22
 2-Butanone
 Concen: 55.625 ug/L
 RT: 7.177 min Scan# 865
 Delta R.T. -0.006 min
 Lab File: VW021877.D
 Acq: 13 Jan 2022 08:39

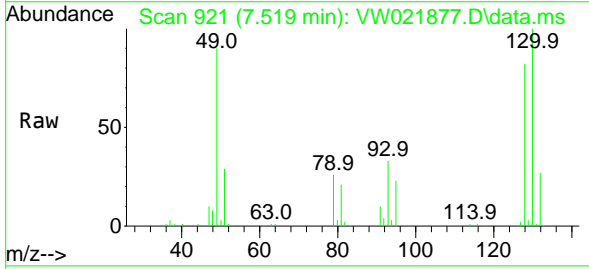
Instrument : MSVOA_W
 ClientSampleId : VSTD025534



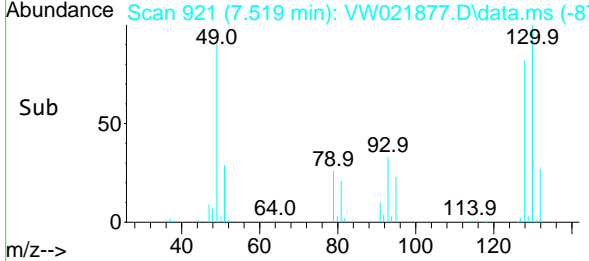
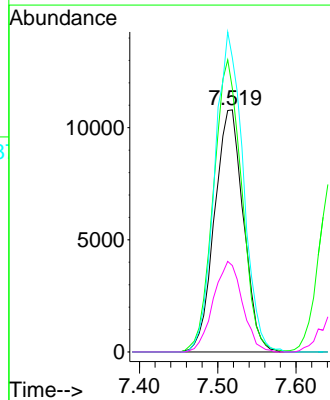
Tgt Ion: 43 Resp: 20542
 Ion Ratio Lower Upper
 43 100
 72 32.9 11.8 35.4

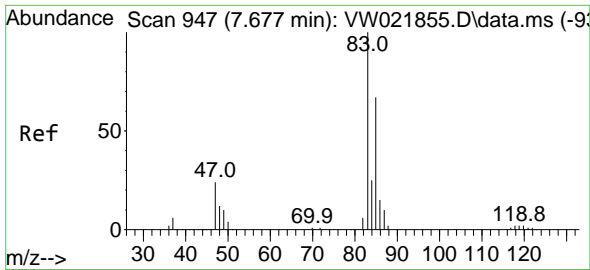


#23
 Bromochloromethane
 Concen: 25.194 ug/L
 RT: 7.519 min Scan# 921
 Delta R.T. 0.006 min
 Lab File: VW021877.D
 Acq: 13 Jan 2022 08:39



Tgt Ion: 128 Resp: 27726
 Ion Ratio Lower Upper
 128 100
 49 108.8 150.3 279.1#
 130 121.5 88.3 163.9
 51 35.7 55.1 82.7#

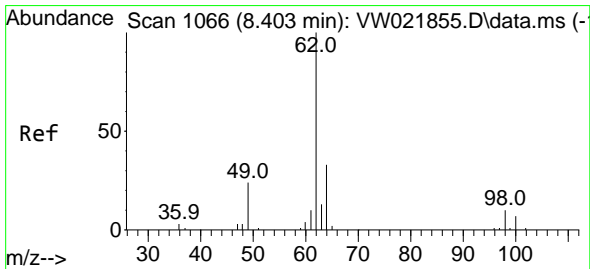
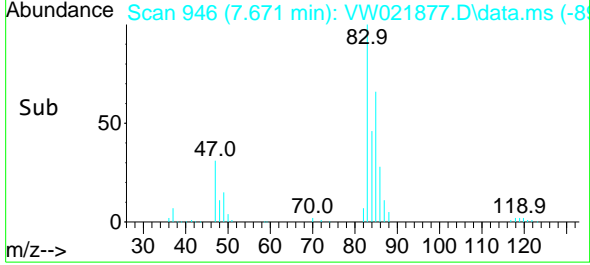
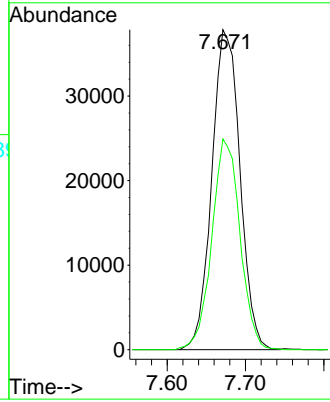
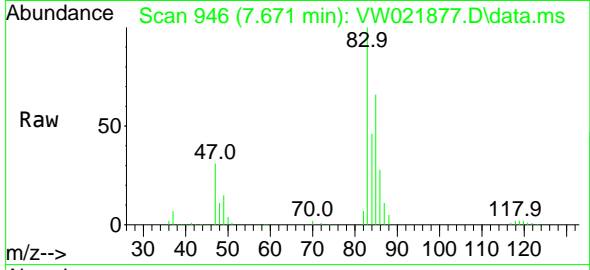




#25
 Chloroform
 Concen: 25.344 ug/L
 RT: 7.671 min Scan# 946
 Delta R.T. -0.006 min
 Lab File: VW021877.D
 Acq: 13 Jan 2022 08:39

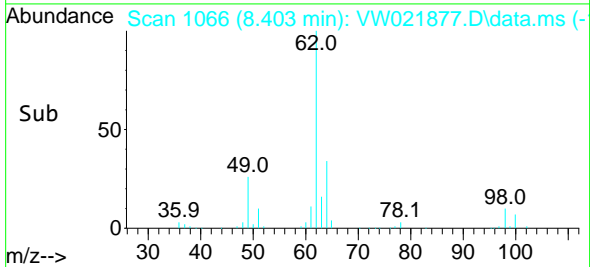
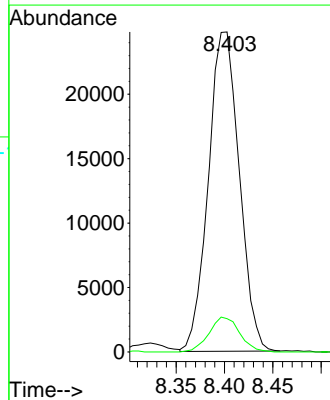
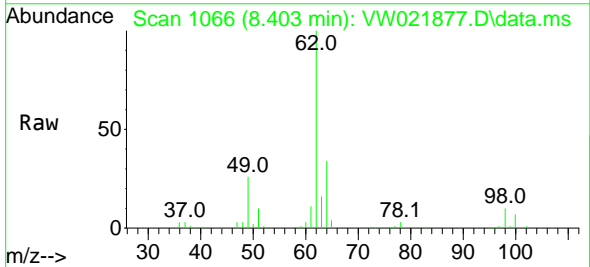
Instrument : MSVOA_W
 ClientSampleId : VSTD025534

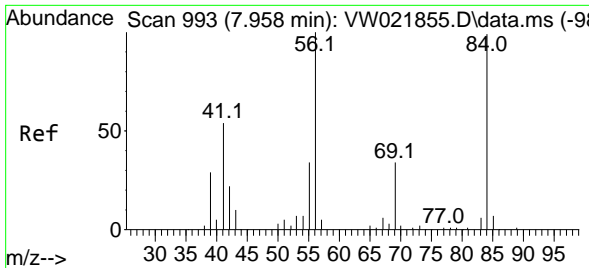
Tgt Ion: 83 Resp: 94549
 Ion Ratio Lower Upper
 83 100
 85 65.9 45.1 83.7



#27
 1,2-Dichloroethane
 Concen: 25.514 ug/L
 RT: 8.403 min Scan# 1066
 Delta R.T. 0.000 min
 Lab File: VW021877.D
 Acq: 13 Jan 2022 08:39

Tgt Ion: 62 Resp: 55120
 Ion Ratio Lower Upper
 62 100
 98 10.4 6.5 9.7#



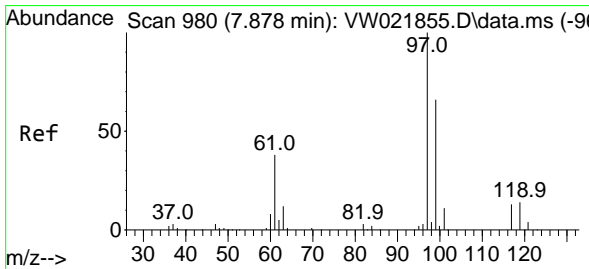
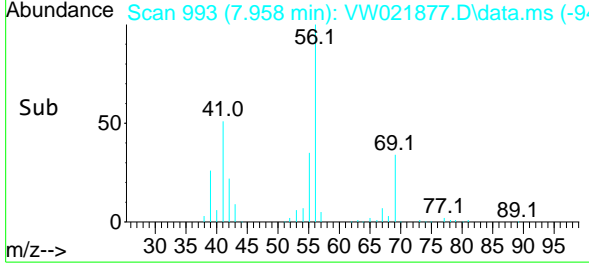
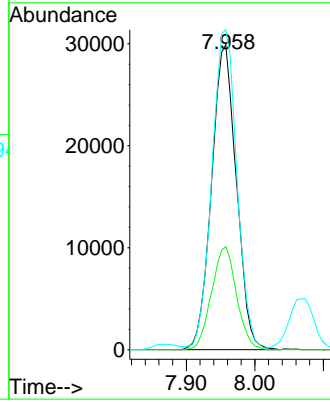
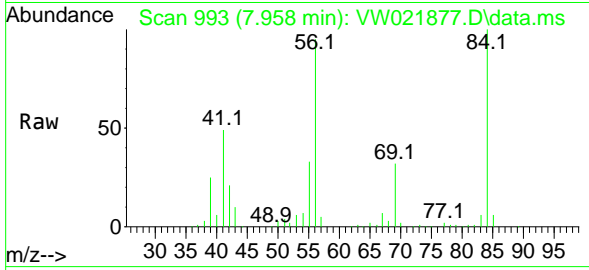


#29
 Cyclohexane
 Concen: 25.693 ug/L
 RT: 7.958 min Scan# 993
 Delta R.T. 0.000 min
 Lab File: VW021877.D
 Acq: 13 Jan 2022 08:39

Instrument : MSVOA_W
 ClientSampleId : VSTD025534

Tgt Ion: 56 Resp: 75128

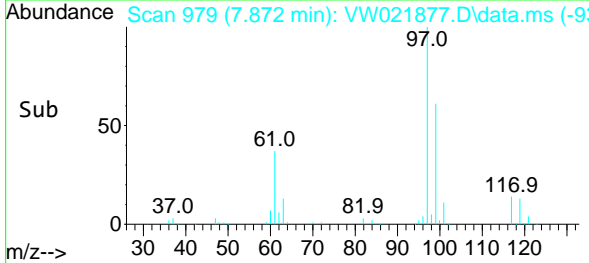
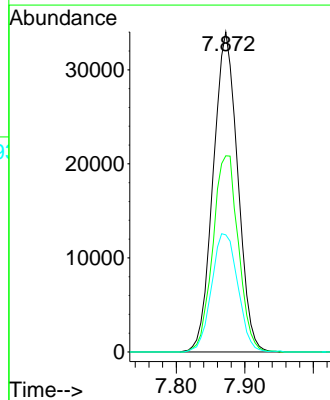
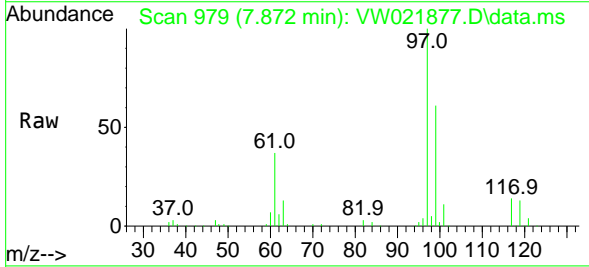
Ion	Ratio	Lower	Upper
56	100		
69	33.9	23.5	35.3
84	104.3	63.4	95.2

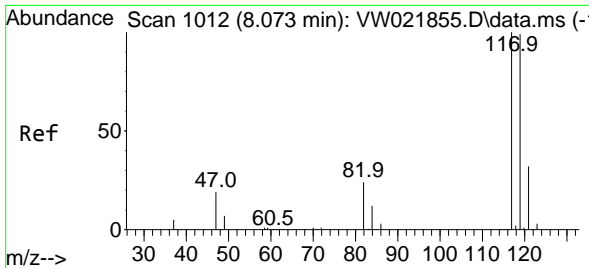


#30
 1,1,1-Trichloroethane
 Concen: 24.923 ug/L
 RT: 7.872 min Scan# 979
 Delta R.T. -0.006 min
 Lab File: VW021877.D
 Acq: 13 Jan 2022 08:39

Tgt Ion: 97 Resp: 84440

Ion	Ratio	Lower	Upper
97	100		
99	64.0	51.6	77.4
61	39.6	40.9	61.3

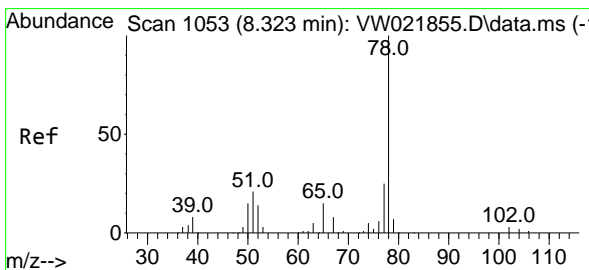
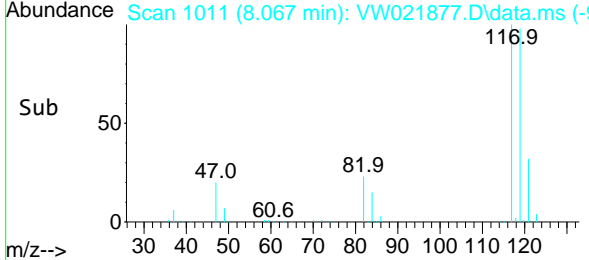
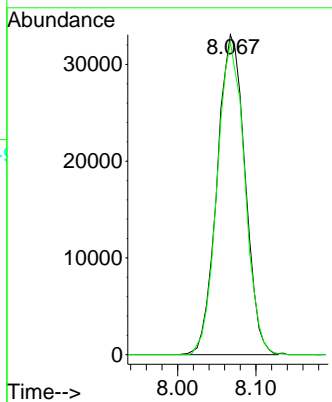
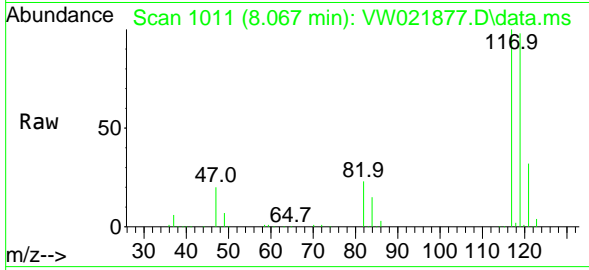




#31
 Carbon tetrachloride
 Concen: 24.965 ug/L
 RT: 8.067 min Scan# 1011
 Delta R.T. -0.006 min
 Lab File: VW021877.D
 Acq: 13 Jan 2022 08:39

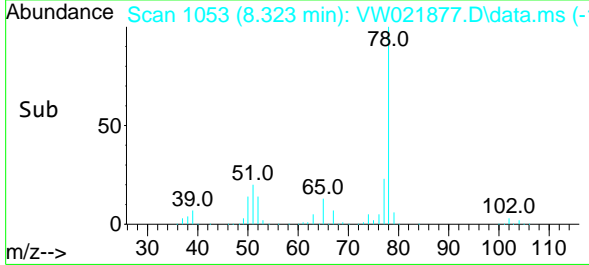
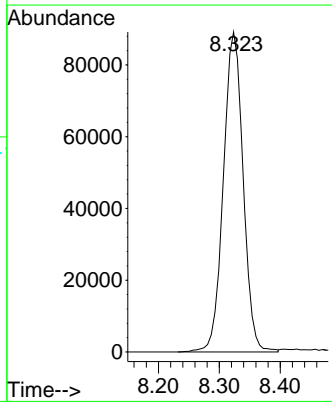
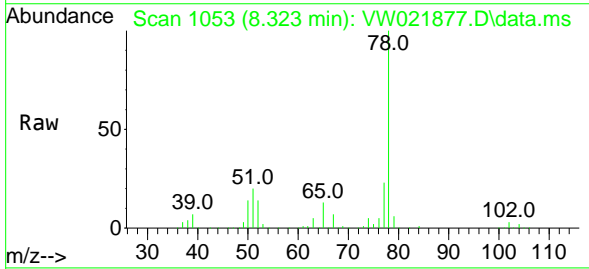
Instrument : MSVOA_W
 ClientSampleId : VSTD025534

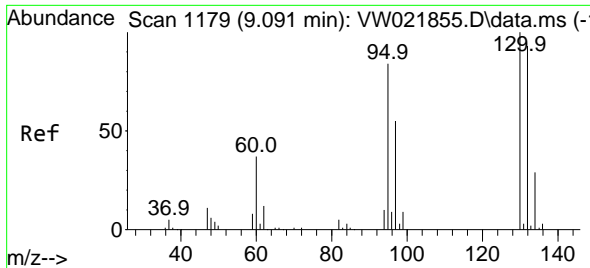
Tgt Ion:117 Resp: 81963
 Ion Ratio Lower Upper
 117 100
 119 96.5 75.7 113.5



#33
 Benzene
 Concen: 25.113 ug/L
 RT: 8.323 min Scan# 1053
 Delta R.T. 0.000 min
 Lab File: VW021877.D
 Acq: 13 Jan 2022 08:39

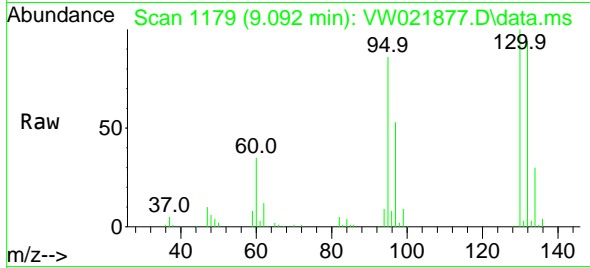
Tgt Ion: 78 Resp: 201271



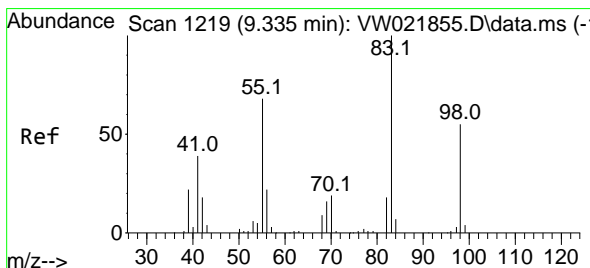
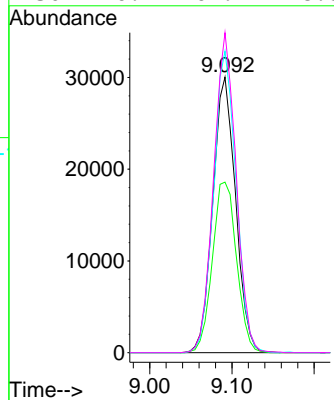
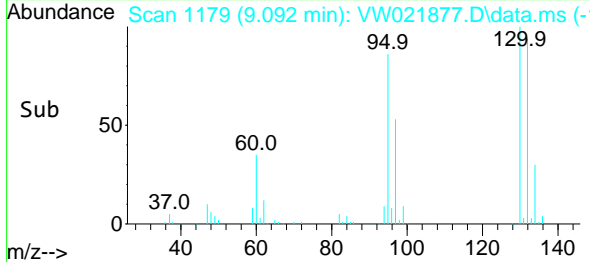


#34
 Trichloroethene
 Concen: 24.906 ug/L
 RT: 9.092 min Scan# 1179
 Delta R.T. 0.000 min
 Lab File: VW021877.D
 Acq: 13 Jan 2022 08:39

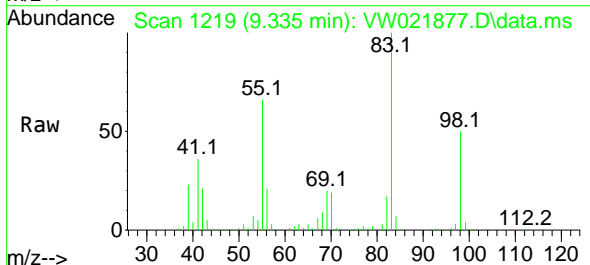
Instrument :
 MSVOA_W
 ClientSampleId :
 VSTD025534



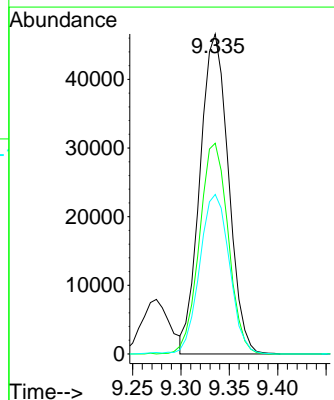
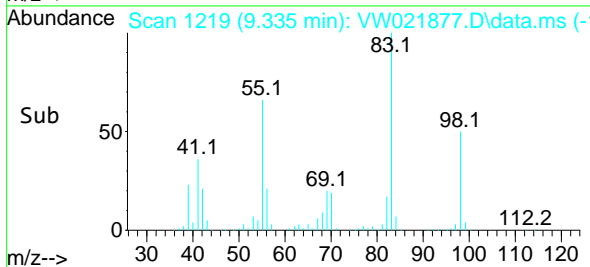
Tgt Ion: 95 Resp: 57912
 Ion Ratio Lower Upper
 95 100
 97 61.9 47.0 87.2
 132 109.4 65.5 121.6
 130 116.1 69.4 128.8

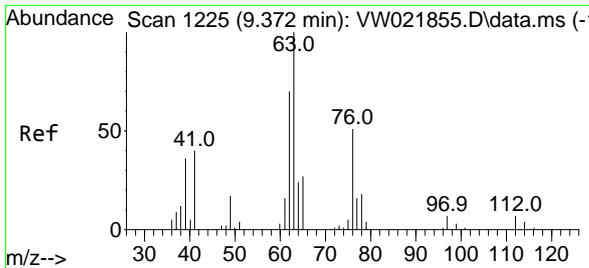


#35
 Methylcyclohexane
 Concen: 25.014 ug/L
 RT: 9.335 min Scan# 1219
 Delta R.T. 0.000 min
 Lab File: VW021877.D
 Acq: 13 Jan 2022 08:39



Tgt Ion: 83 Resp: 95649
 Ion Ratio Lower Upper
 83 100
 55 66.5 70.8 106.2#
 98 52.1 37.7 56.5

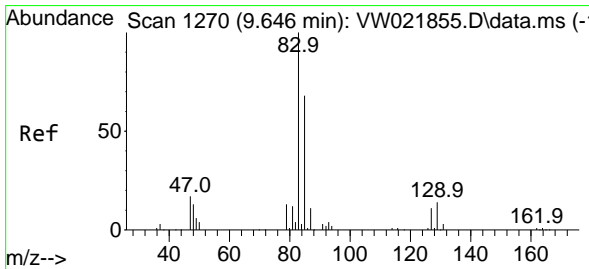
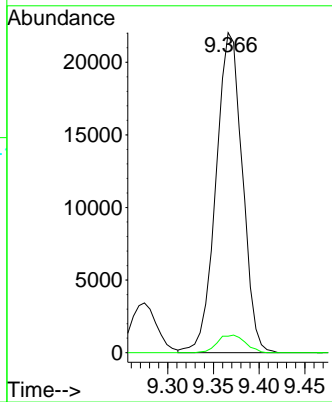
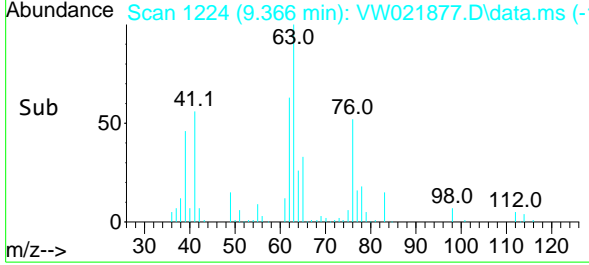
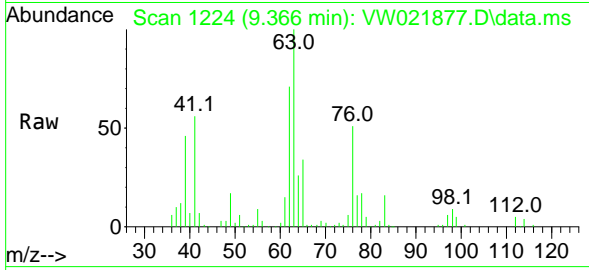




#37
 1,2-Dichloropropane
 Concen: 25.416 ug/L
 RT: 9.366 min Scan# 111
 Delta R.T. -0.006 min
 Lab File: VW021877.D
 Acq: 13 Jan 2022 08:39

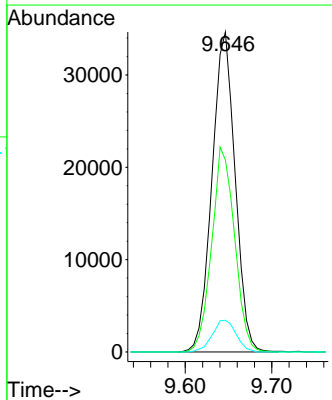
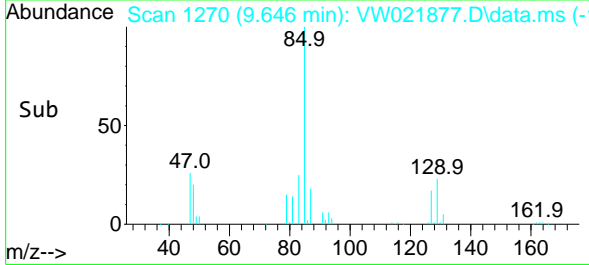
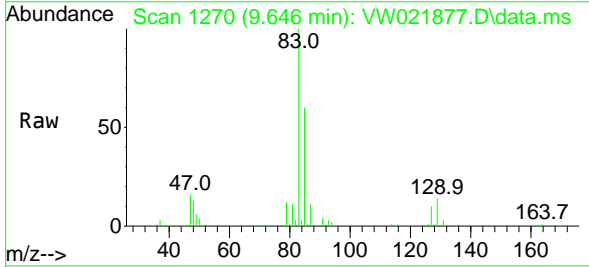
Instrument : MSVOA_W
 ClientSampleId : VSTD025534

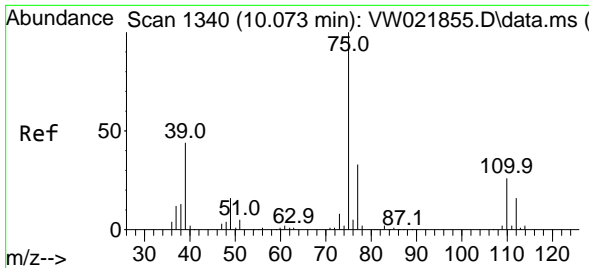
Tgt Ion: 63 Resp: 44378
 Ion Ratio Lower Upper
 63 100
 112 5.8 3.2 4.8#



#38
 Bromodichloromethane
 Concen: 26.377 ug/L
 RT: 9.646 min Scan# 1270
 Delta R.T. 0.000 min
 Lab File: VW021877.D
 Acq: 13 Jan 2022 08:39

Tgt Ion: 83 Resp: 64293
 Ion Ratio Lower Upper
 83 100
 85 60.0 44.1 81.9
 127 9.9 6.1 9.1#

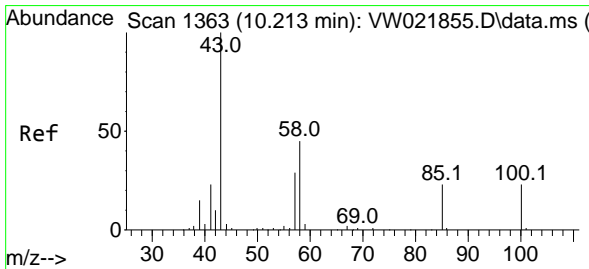
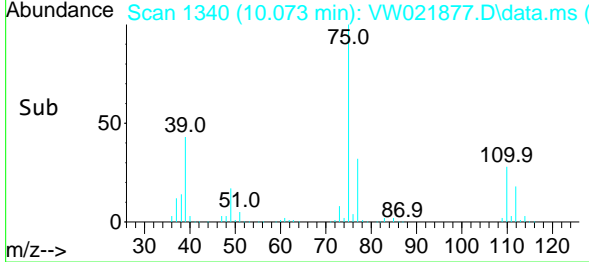
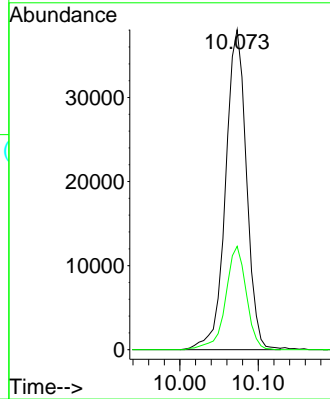
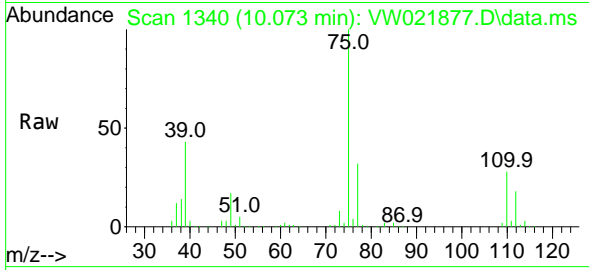




#39
 cis-1,3-Dichloropropene
 Concen: 26.018 ug/L
 RT: 10.073 min Scan# 1340
 Delta R.T. 0.000 min
 Lab File: VW021877.D
 Acq: 13 Jan 2022 08:39

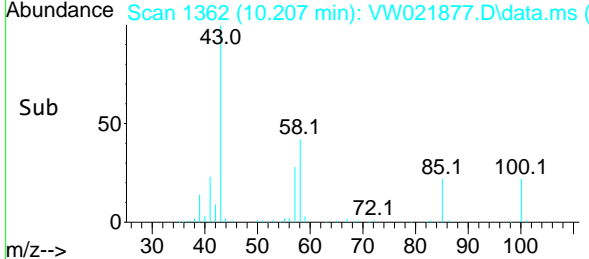
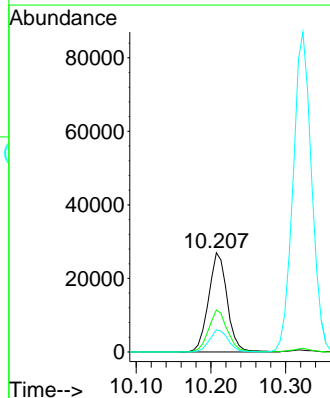
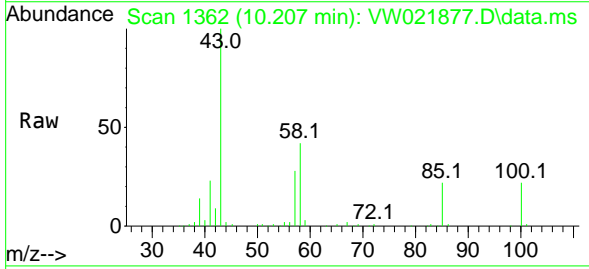
Instrument : MSVOA_W
 ClientSampleId : VSTD025534

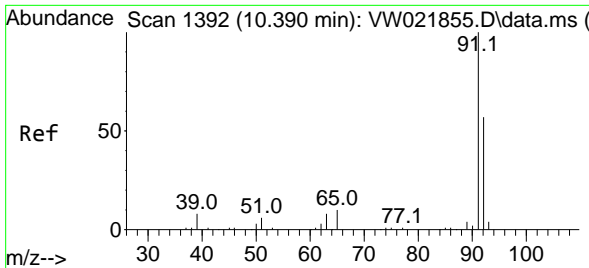
Tgt Ion: 75 Resp: 70589
 Ion Ratio Lower Upper
 75 100
 77 32.3 21.8 40.6



#40
 4-Methyl-2-pentanone
 Concen: 57.123 ug/L
 RT: 10.207 min Scan# 1362
 Delta R.T. -0.006 min
 Lab File: VW021877.D
 Acq: 13 Jan 2022 08:39

Tgt Ion: 43 Resp: 46853
 Ion Ratio Lower Upper
 43 100
 58 42.6 28.8 43.2
 100 22.4 10.0 15.0#

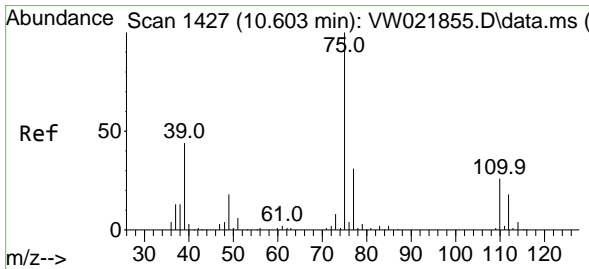
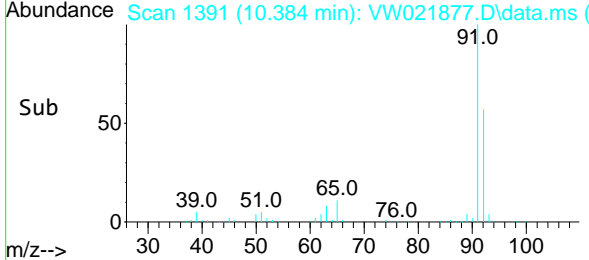
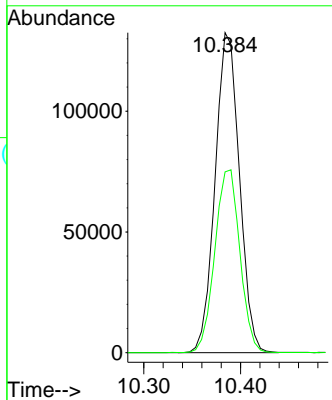
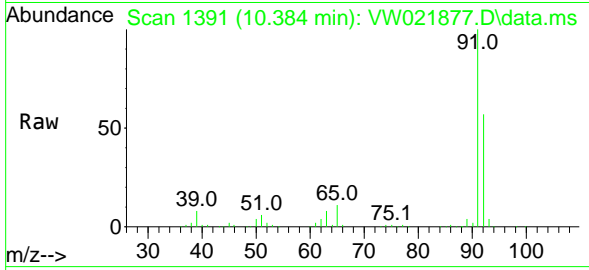




#42
 Toluene
 Concen: 25.735 ug/L
 RT: 10.384 min Scan# 1391
 Delta R.T. -0.006 min
 Lab File: VW021877.D
 Acq: 13 Jan 2022 08:39

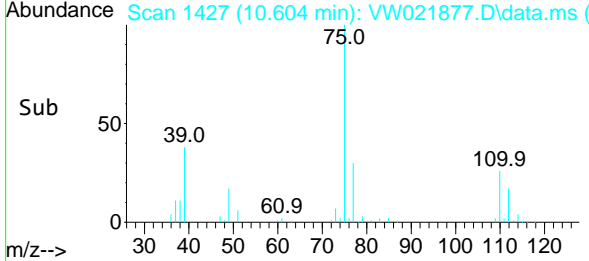
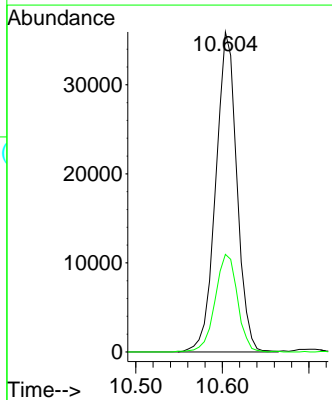
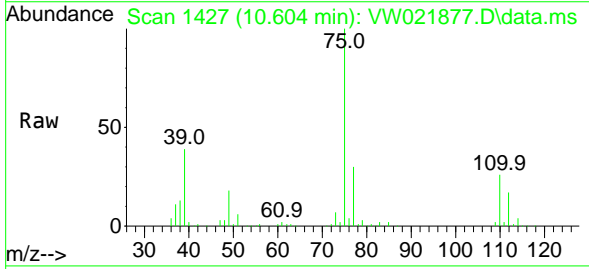
Instrument : MSVOA_W
 ClientSampleId : VSTD025534

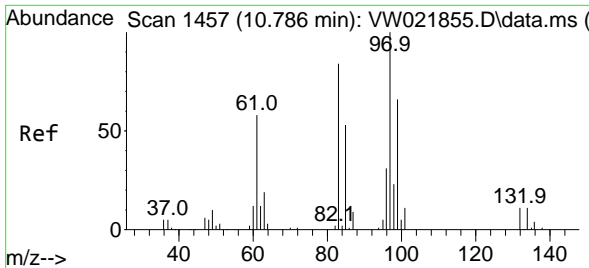
Tgt Ion: 91 Resp: 231336
 Ion Ratio Lower Upper
 91 100
 92 56.5 41.7 77.5



#44
 trans-1,3-Dichloropropene
 Concen: 26.786 ug/L
 RT: 10.604 min Scan# 1427
 Delta R.T. 0.000 min
 Lab File: VW021877.D
 Acq: 13 Jan 2022 08:39

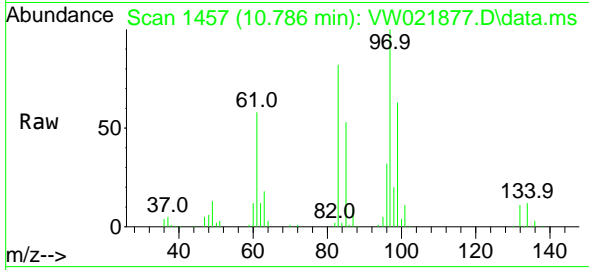
Tgt Ion: 75 Resp: 60824
 Ion Ratio Lower Upper
 75 100
 77 30.5 22.2 41.2





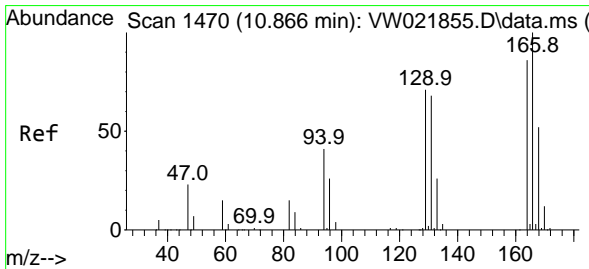
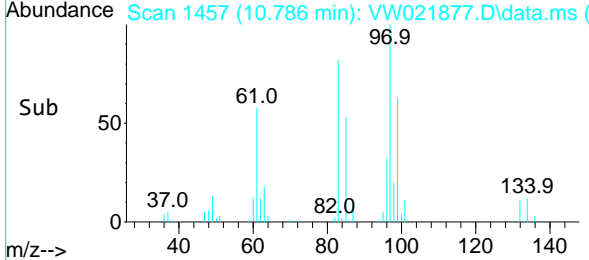
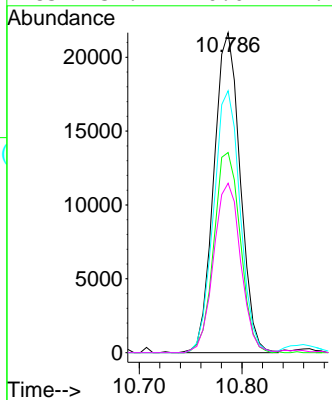
#45
 1,1,2-Trichloroethane
 Concen: 25.987 ug/L
 RT: 10.786 min Scan# 1457
 Delta R.T. 0.000 min
 Lab File: VW021877.D
 Acq: 13 Jan 2022 08:39

Instrument : MSVOA_W
 ClientSampleId : VSTD025534

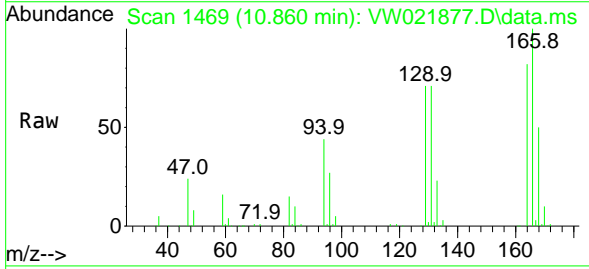


Tgt Ion: 97 Resp: 38524

Ion	Ratio	Lower	Upper
97	100		
99	62.6	43.0	79.8
83	81.8	62.6	116.3
85	52.9	40.0	74.2

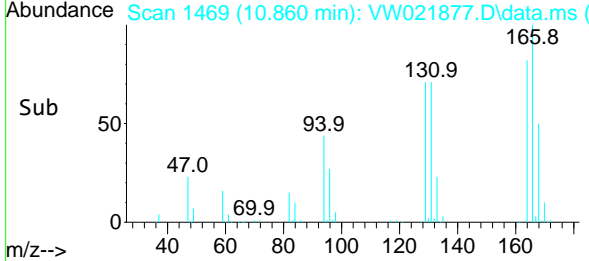
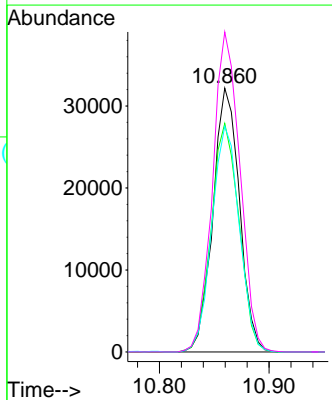


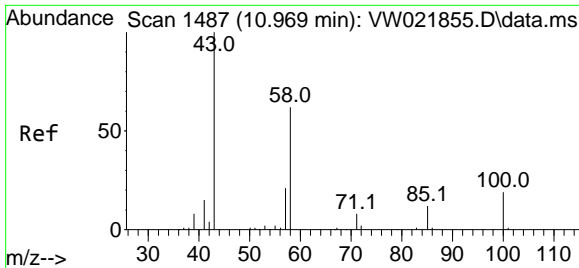
#46
 Tetrachloroethene
 Concen: 23.554 ug/L
 RT: 10.860 min Scan# 1469
 Delta R.T. -0.006 min
 Lab File: VW021877.D
 Acq: 13 Jan 2022 08:39



Tgt Ion: 164 Resp: 54160

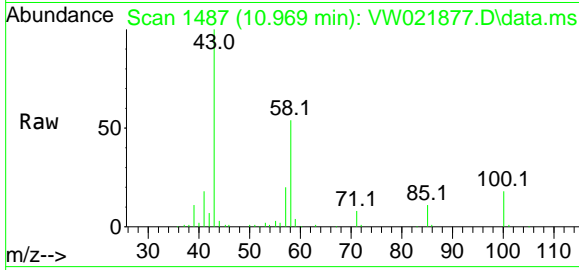
Ion	Ratio	Lower	Upper
164	100		
129	86.6	65.5	121.7
131	85.6	59.7	110.9
166	121.3	88.7	164.7





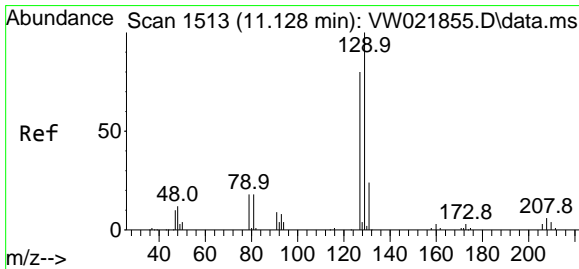
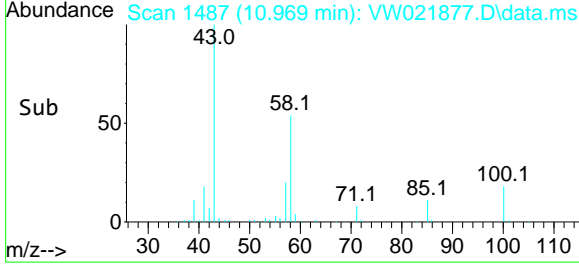
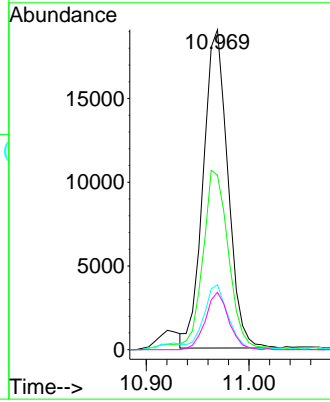
#48
 2-Hexanone
 Concen: 56.396 ug/L
 RT: 10.969 min Scan# 1487
 Delta R.T. 0.000 min
 Lab File: VW021877.D
 Acq: 13 Jan 2022 08:39

Instrument : MSVOA_W
 ClientSampleId : VSTD025534

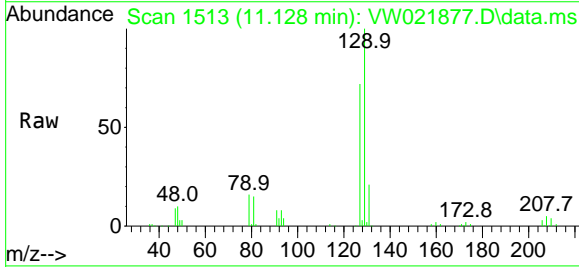


Tgt Ion: 43 Resp: 31649

Ion	Ratio	Lower	Upper
43	100		
58	58.8	40.2	60.2
57	20.0	14.3	21.5
100	17.0	8.0	12.0

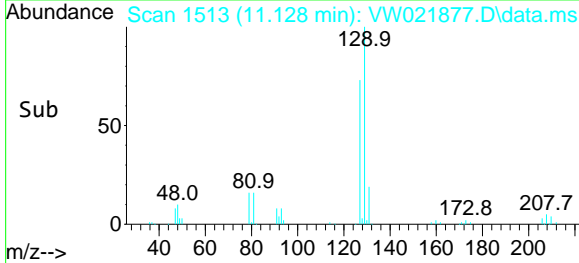
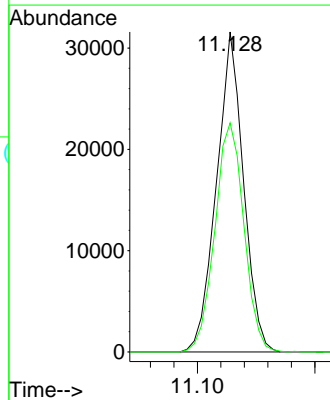


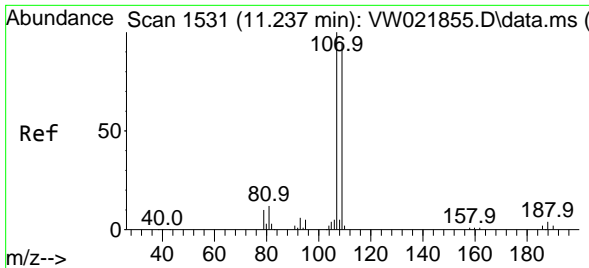
#49
 Dibromochloromethane
 Concen: 26.940 ug/L
 RT: 11.128 min Scan# 1513
 Delta R.T. 0.000 min
 Lab File: VW021877.D
 Acq: 13 Jan 2022 08:39



Tgt Ion: 129 Resp: 50322

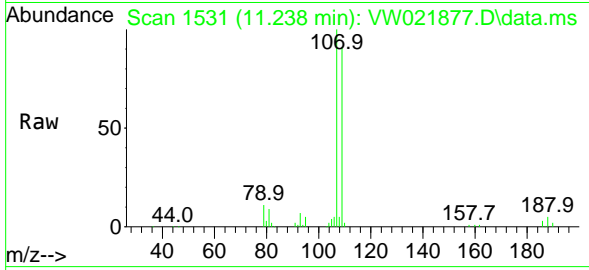
Ion	Ratio	Lower	Upper
129	100		
127	71.6	55.7	103.5





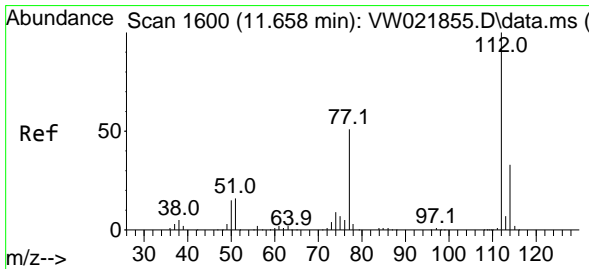
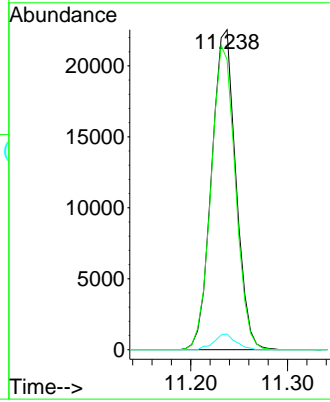
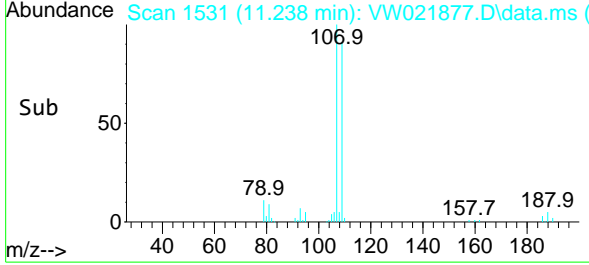
#50
 1,2-Dibromoethane
 Concen: 26.671 ug/L
 RT: 11.238 min Scan# 1531
 Delta R.T. 0.000 min
 Lab File: VW021877.D
 Acq: 13 Jan 2022 08:39

Instrument : MSVOA_W
 ClientSampleId : VSTD025534

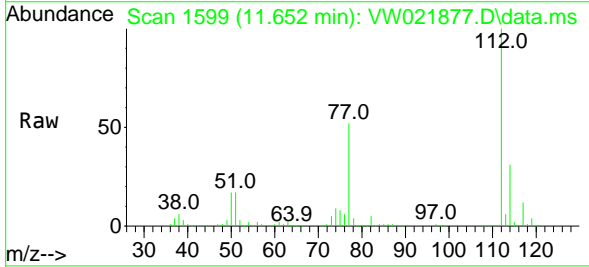


Tgt Ion:107 Resp: 39246

Ion	Ratio	Lower	Upper
107	100		
109	90.5	64.1	119.1
188	4.9	2.6	3.8#

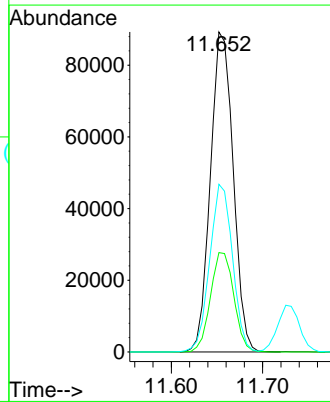
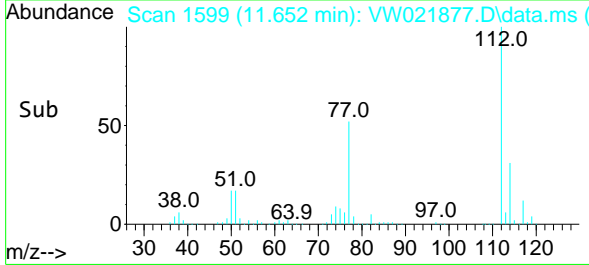


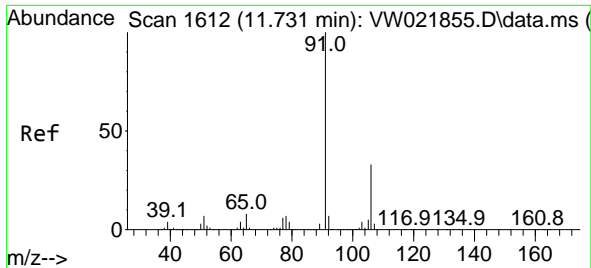
#51
 Chlorobenzene
 Concen: 24.357 ug/L
 RT: 11.652 min Scan# 1599
 Delta R.T. -0.006 min
 Lab File: VW021877.D
 Acq: 13 Jan 2022 08:39



Tgt Ion:112 Resp: 154593

Ion	Ratio	Lower	Upper
112	100		
114	31.0	22.4	41.6
77	52.4	50.2	75.4

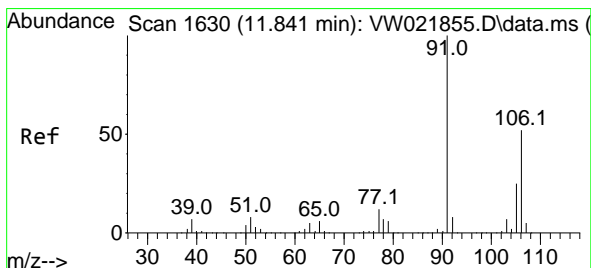
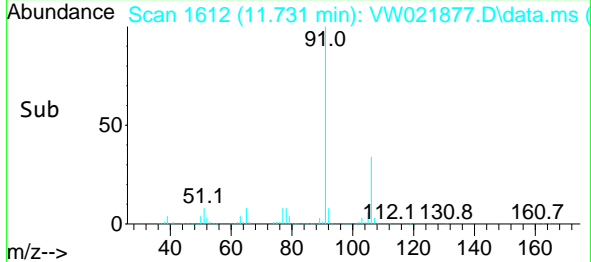
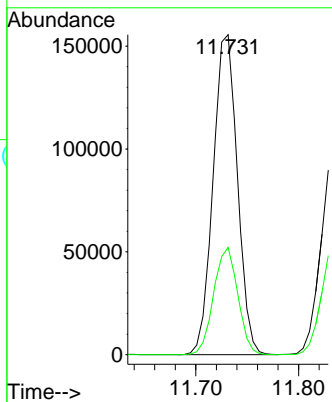
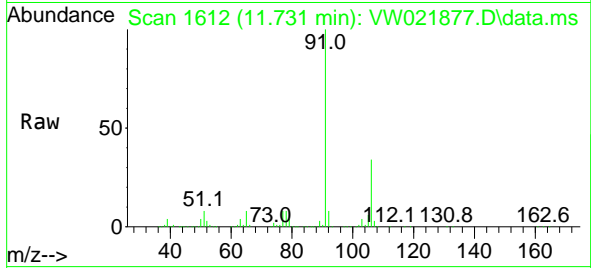




#52
 Ethylbenzene
 Concen: 25.557 ug/L
 RT: 11.731 min Scan# 1
 Delta R.T. 0.000 min
 Lab File: VW021877.D
 Acq: 13 Jan 2022 08:39

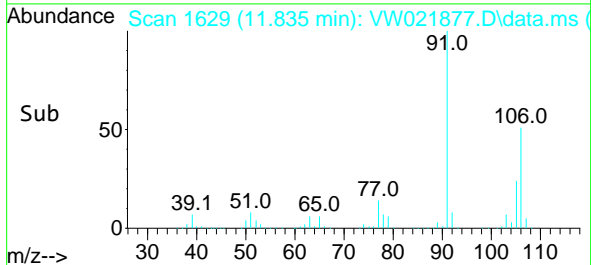
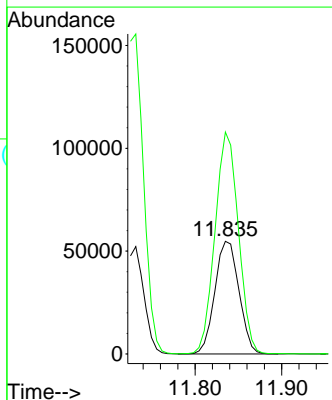
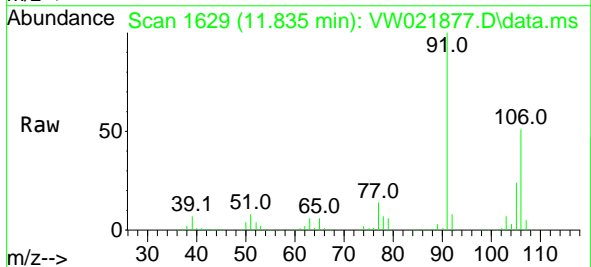
Instrument : MSVOA_W
 ClientSampleId : VSTD025534

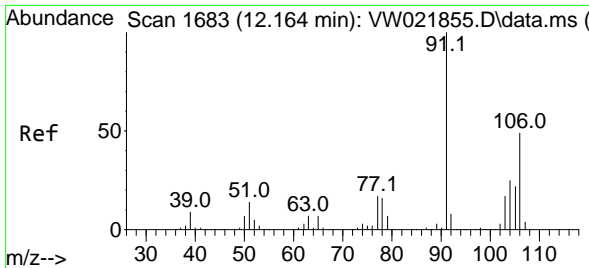
Tgt Ion: 91 Resp: 255205
 Ion Ratio Lower Upper
 91 100
 106 33.5 21.5 39.9



#53
 m,p-Xylene
 Concen: 25.390 ug/L
 RT: 11.835 min Scan# 1629
 Delta R.T. -0.006 min
 Lab File: VW021877.D
 Acq: 13 Jan 2022 08:39

Tgt Ion: 106 Resp: 106020
 Ion Ratio Lower Upper
 106 100
 91 196.9 149.9 278.3

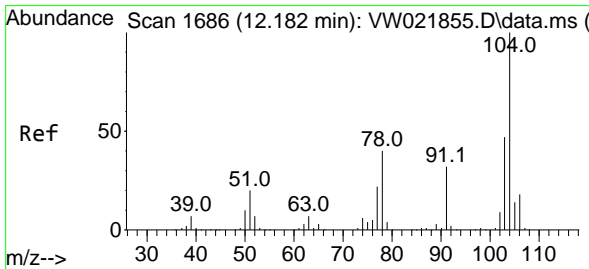
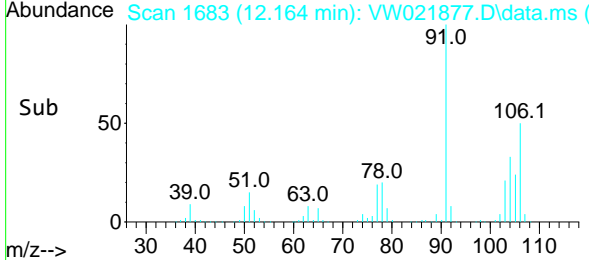
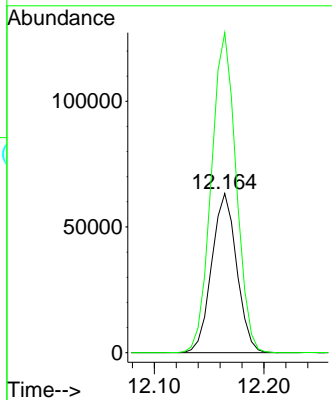
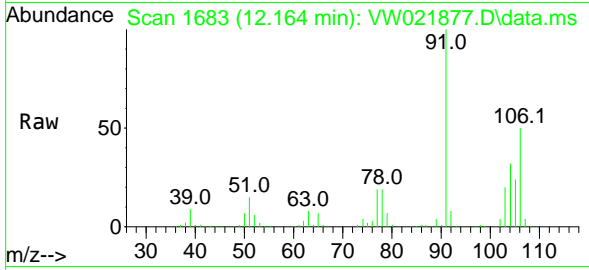




#54
 o-Xylene
 Concen: 25.881 ug/L
 RT: 12.164 min Scan# 1683
 Delta R.T. 0.000 min
 Lab File: VW021877.D
 Acq: 13 Jan 2022 08:39

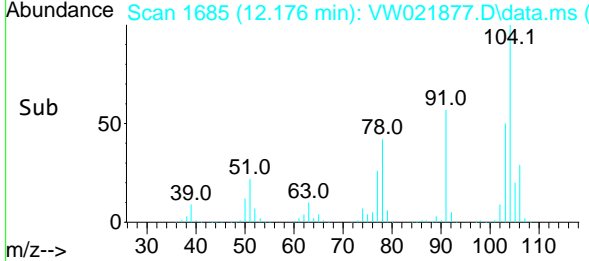
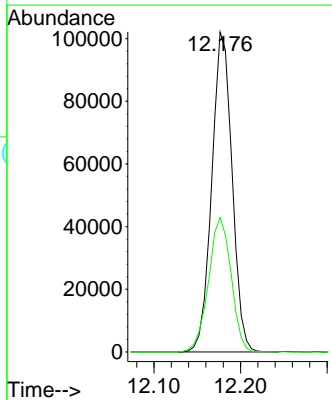
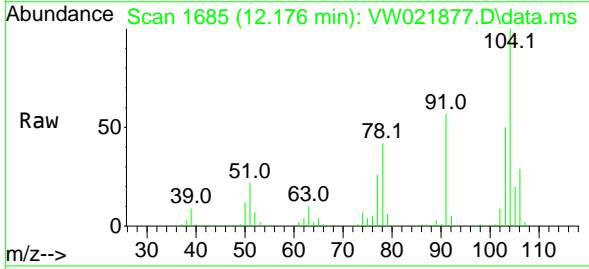
Instrument : MSVOA_W
 ClientSampleId : VSTD025534

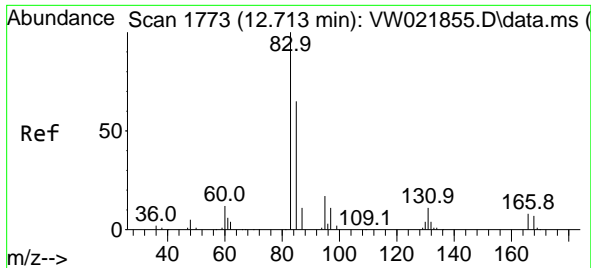
Tgt Ion:106 Resp: 100329
 Ion Ratio Lower Upper
 106 100
 91 201.1 153.6 285.3



#55
 Styrene
 Concen: 25.967 ug/L
 RT: 12.176 min Scan# 1685
 Delta R.T. -0.006 min
 Lab File: VW021877.D
 Acq: 13 Jan 2022 08:39

Tgt Ion:104 Resp: 166186
 Ion Ratio Lower Upper
 104 100
 78 42.0 34.4 64.0

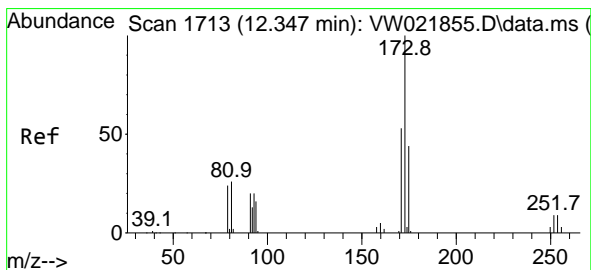
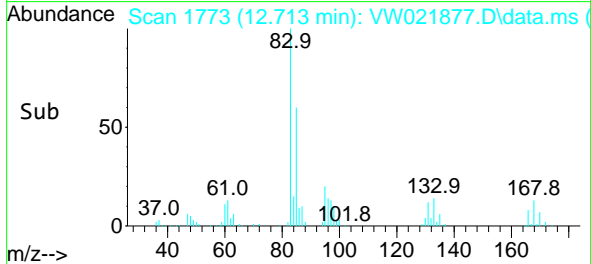
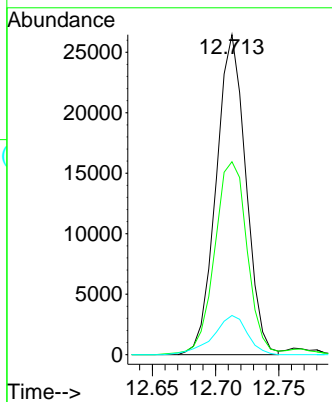
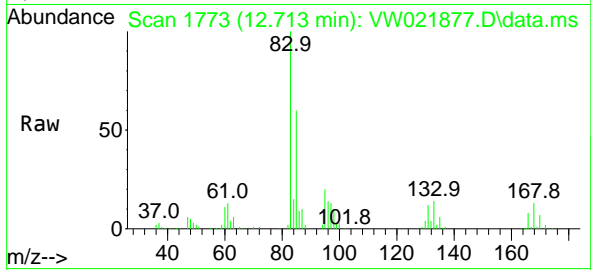




#57
 1,1,2-Tetrachloroethane
 Concen: 27.063 ug/L
 RT: 12.713 min Scan# 11
 Delta R.T. 0.000 min
 Lab File: VW021877.D
 Acq: 13 Jan 2022 08:39

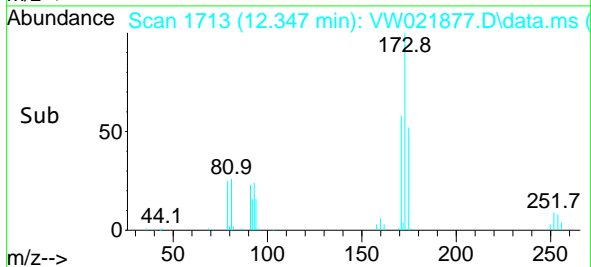
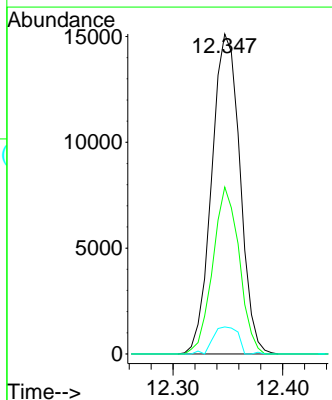
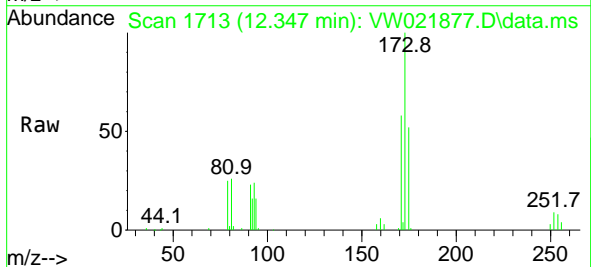
Instrument :
 MSVOA_W
 ClientSampleId :
 VSTD025534

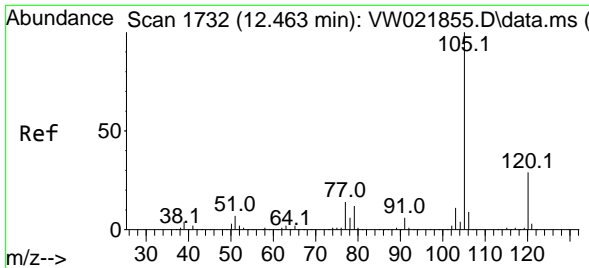
Tgt Ion	Resp	Lower	Upper
83	43166		
83	100		
85	60.3	44.0	81.6
131	12.2	6.9	10.3



#59
 Bromoform
 Concen: 26.862 ug/L
 RT: 12.347 min Scan# 1713
 Delta R.T. 0.000 min
 Lab File: VW021877.D
 Acq: 13 Jan 2022 08:39

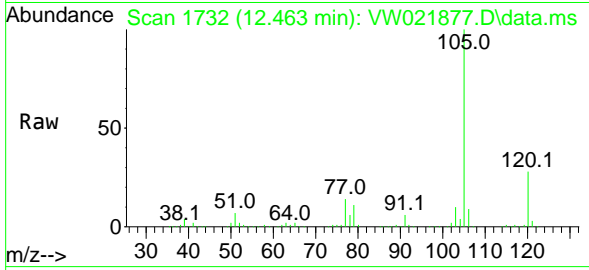
Tgt Ion	Resp	Lower	Upper
173	27098		
173	100		
175	48.8	39.6	59.4
254	7.2	7.4	11.0



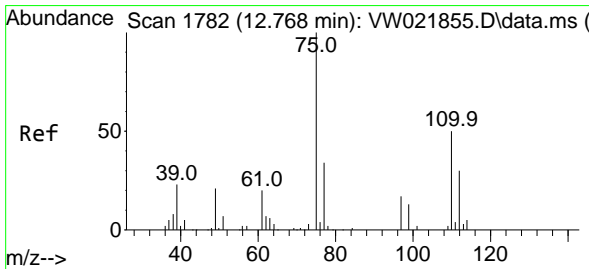
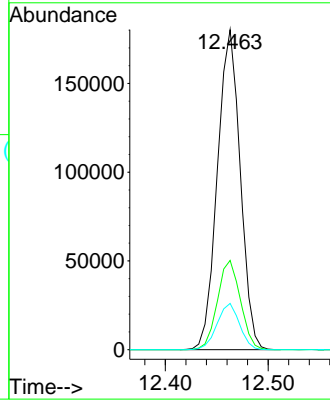
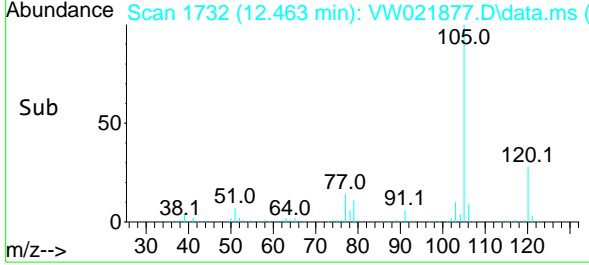


#60
 Isopropylbenzene
 Concen: 27.604 ug/L
 RT: 12.463 min Scan# 11
 Delta R.T. 0.000 min
 Lab File: VW021877.D
 Acq: 13 Jan 2022 08:39

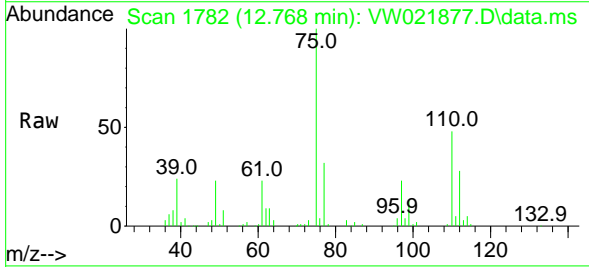
Instrument :
 MSVOA_W
 ClientSampleId :
 VSTD025534



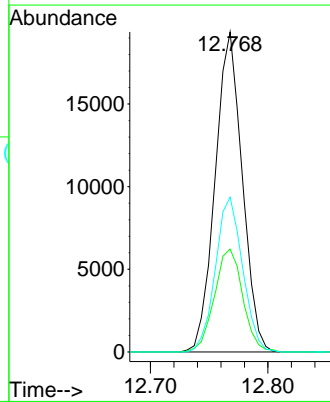
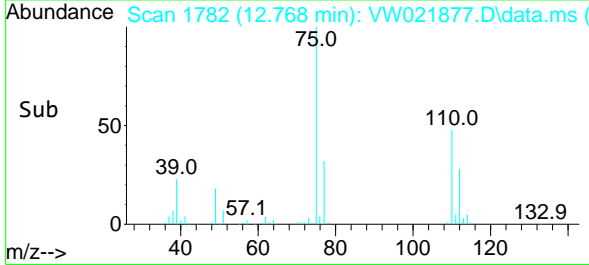
Tgt Ion:105 Resp: 278135
 Ion Ratio Lower Upper
 105 100
 120 28.0 20.1 30.1
 77 14.2 13.8 20.8

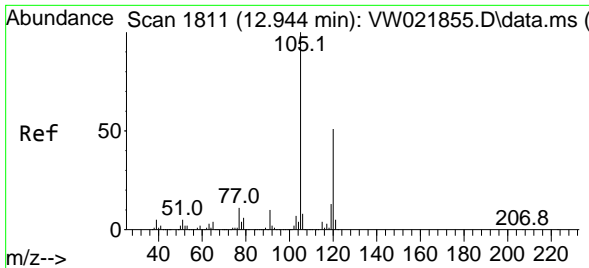


#61
 1,2,3-Trichloropropane
 Concen: 29.325 ug/L
 RT: 12.768 min Scan# 1782
 Delta R.T. 0.000 min
 Lab File: VW021877.D
 Acq: 13 Jan 2022 08:39



Tgt Ion: 75 Resp: 31008
 Ion Ratio Lower Upper
 75 100
 77 33.6 25.8 38.8
 110 48.6 29.0 43.4#

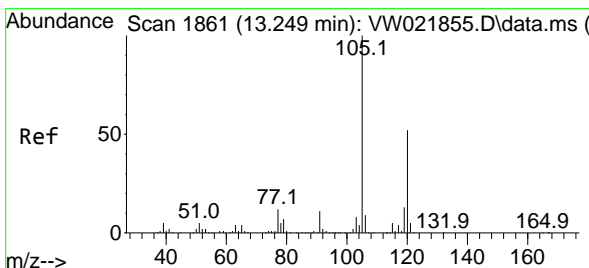
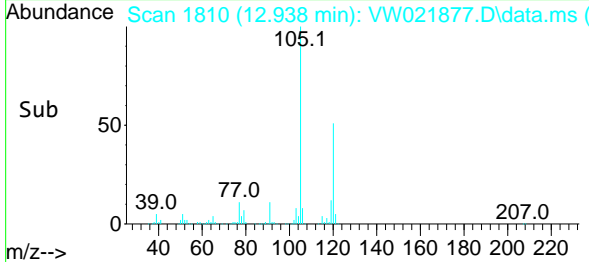
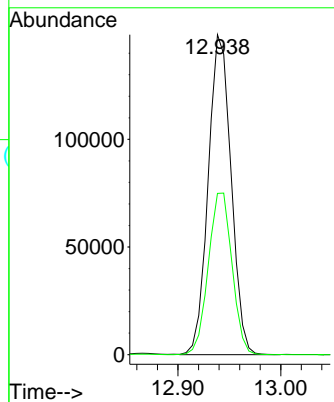
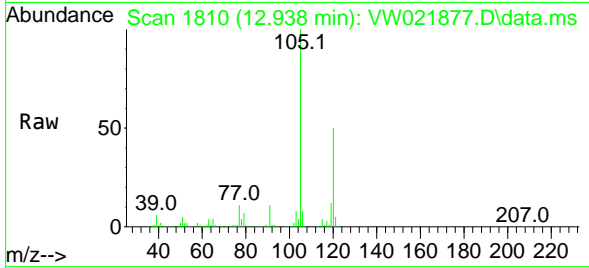




#62
 1,3,5-Trimethylbenzene
 Concen: 27.569 ug/L
 RT: 12.938 min Scan# 1810
 Delta R.T. -0.006 min
 Lab File: VW021877.D
 Acq: 13 Jan 2022 08:39

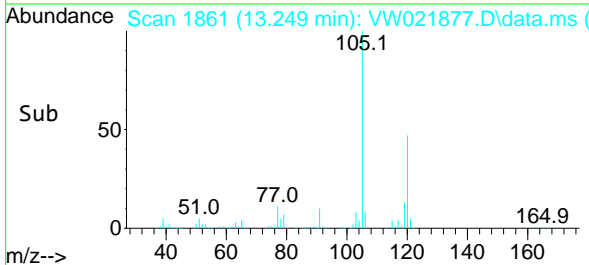
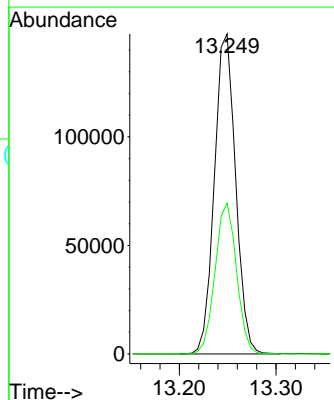
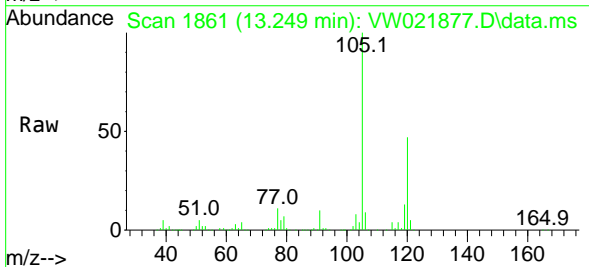
Instrument :
 MSVOA_W
 ClientSampleId :
 VSTD025534

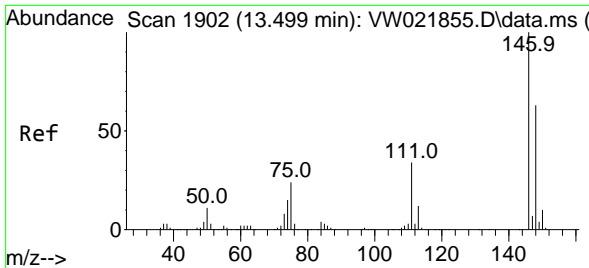
Tgt Ion:105 Resp: 230030
 Ion Ratio Lower Upper
 105 100
 120 52.4 37.4 56.2



#63
 1,2,4-Trimethylbenzene
 Concen: 27.287 ug/L
 RT: 13.249 min Scan# 1861
 Delta R.T. 0.000 min
 Lab File: VW021877.D
 Acq: 13 Jan 2022 08:39

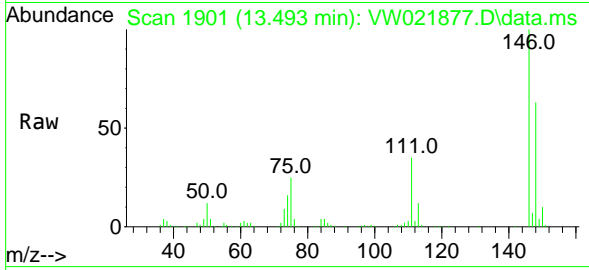
Tgt Ion:105 Resp: 224539
 Ion Ratio Lower Upper
 105 100
 120 47.5 35.0 52.6



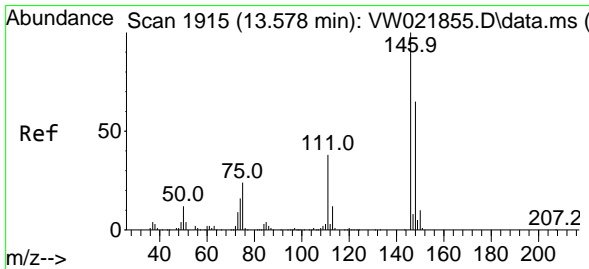
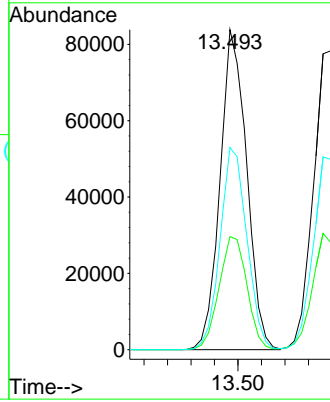
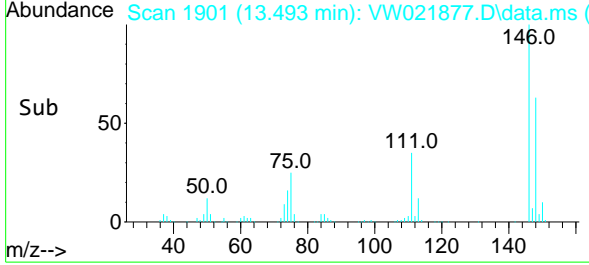


#64
 1,3-Dichlorobenzene
 Concen: 26.003 ug/L
 RT: 13.493 min Scan# 1901
 Delta R.T. -0.006 min
 Lab File: VW021877.D
 Acq: 13 Jan 2022 08:39

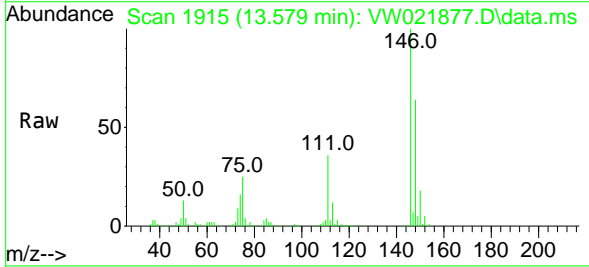
Instrument : MSVOA_W
 ClientSampleId : VSTD025534



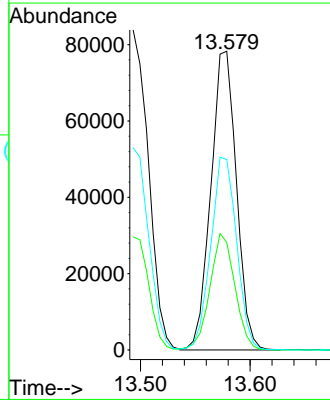
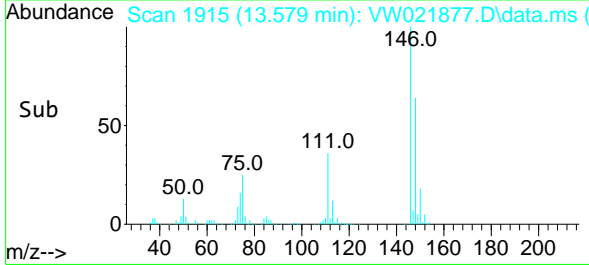
Tgt Ion:146 Resp: 131726
 Ion Ratio Lower Upper
 146 100
 111 35.3 29.8 55.3
 148 63.2 46.2 85.8

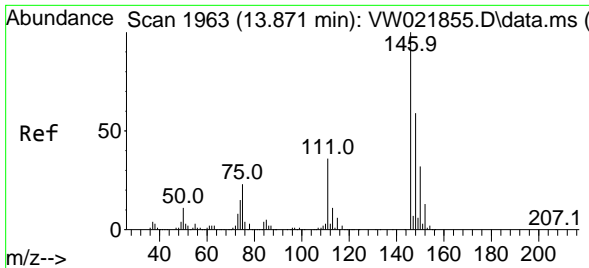


#65
 1,4-Dichlorobenzene
 Concen: 25.430 ug/L
 RT: 13.579 min Scan# 1915
 Delta R.T. 0.000 min
 Lab File: VW021877.D
 Acq: 13 Jan 2022 08:39



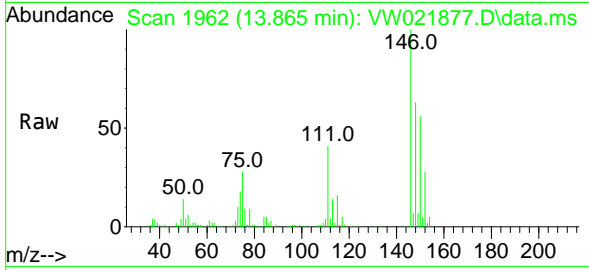
Tgt Ion:146 Resp: 127195
 Ion Ratio Lower Upper
 146 100
 111 36.0 29.0 53.9
 148 63.7 46.9 87.1



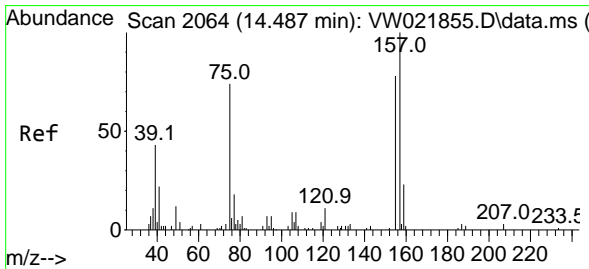
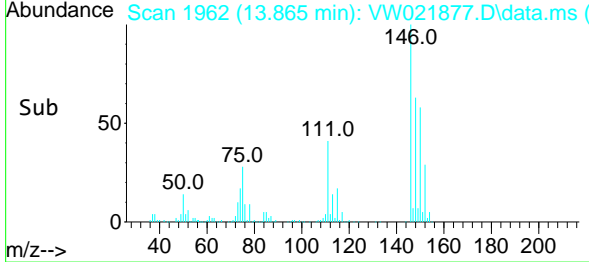
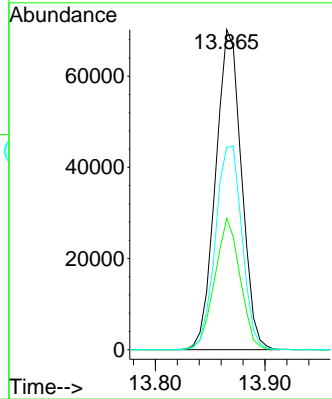


#67
 1,2-Dichlorobenzene
 Concen: 25.954 ug/L
 RT: 13.865 min Scan# 1962
 Delta R.T. -0.006 min
 Lab File: VW021877.D
 Acq: 13 Jan 2022 08:39

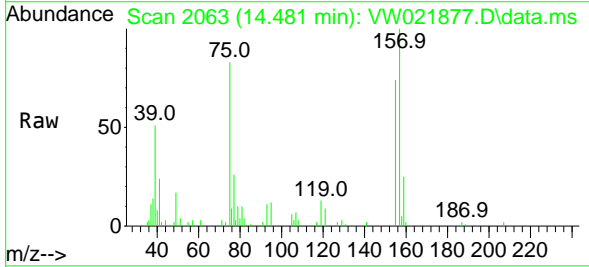
Instrument : MSVOA_W
 ClientSampleId : VSTD025534



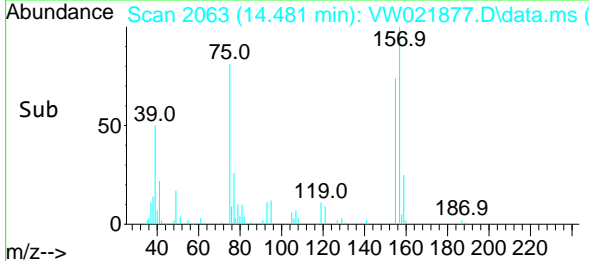
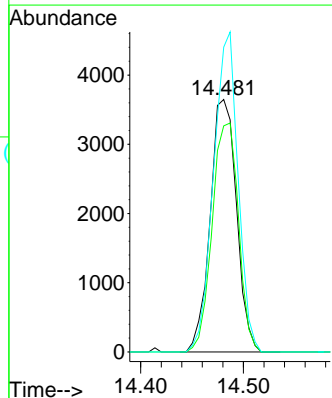
Tgt Ion:146 Resp: 115117
 Ion Ratio Lower Upper
 146 100
 111 41.0 33.1 49.7
 148 63.2 47.4 71.2

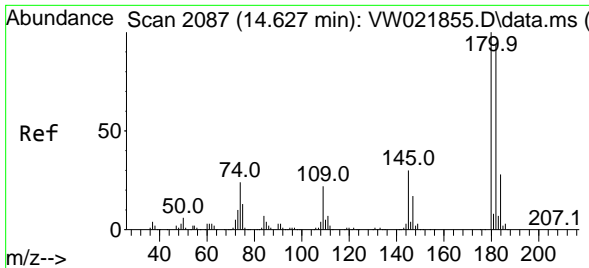


#68
 1,2-Dibromo-3-chloropropane
 Concen: 31.729 ug/L
 RT: 14.481 min Scan# 2063
 Delta R.T. -0.006 min
 Lab File: VW021877.D
 Acq: 13 Jan 2022 08:39



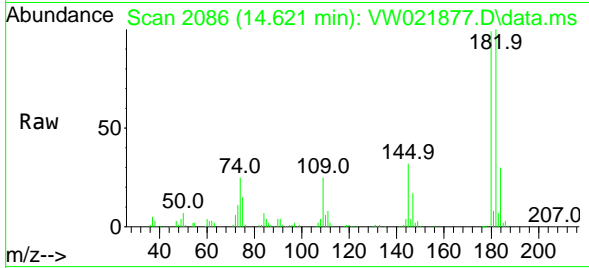
Tgt Ion: 75 Resp: 6479
 Ion Ratio Lower Upper
 75 100
 155 89.5 54.2 81.2#
 157 120.7 69.4 104.2#



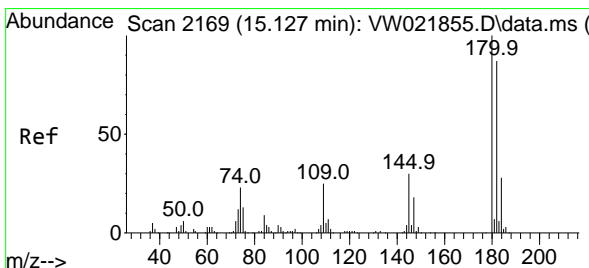
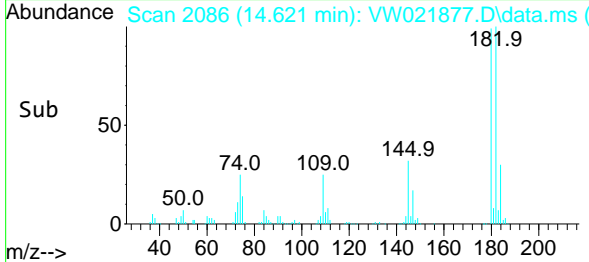
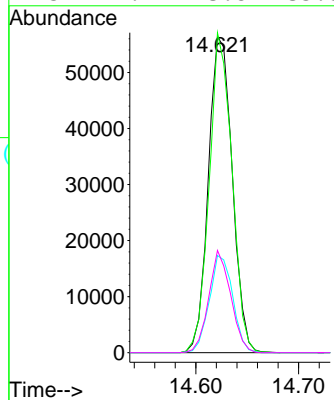


#69
 1,3,5-Trichlorobenzene
 Concen: 24.172 ug/L
 RT: 14.621 min Scan# 2086
 Delta R.T. -0.006 min
 Lab File: VW021877.D
 Acq: 13 Jan 2022 08:39

Instrument : MSVOA_W
 ClientSampleId : VSTD025534

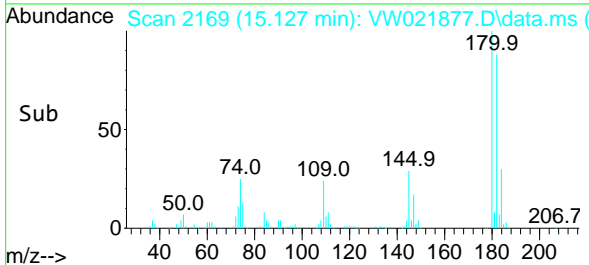
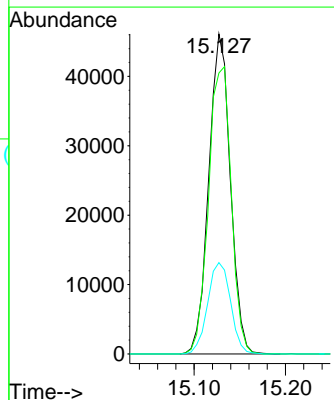
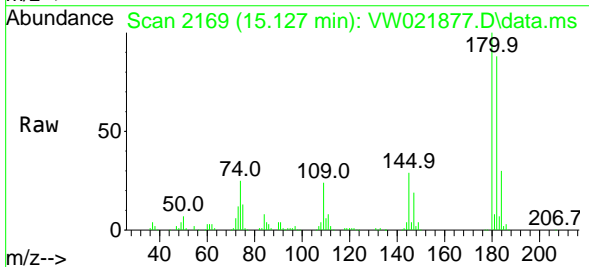


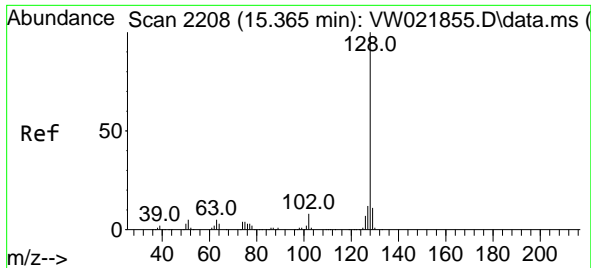
Tgt Ion:180 Resp: 91013
 Ion Ratio Lower Upper
 180 100
 182 96.3 75.4 113.0
 184 30.2 23.8 35.8
 145 29.9 23.8 35.8



#70
 1,2,4-trichlorobenzene
 Concen: 25.179 ug/L
 RT: 15.127 min Scan# 2169
 Delta R.T. 0.000 min
 Lab File: VW021877.D
 Acq: 13 Jan 2022 08:39

Tgt Ion:180 Resp: 75540
 Ion Ratio Lower Upper
 180 100
 182 94.7 79.0 118.6
 145 30.3 26.0 39.0



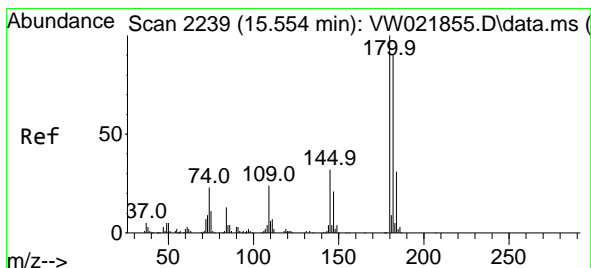
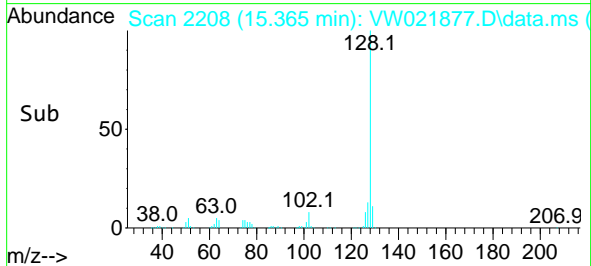
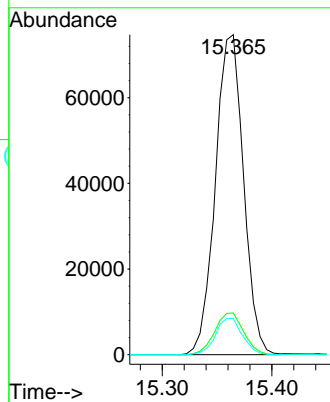
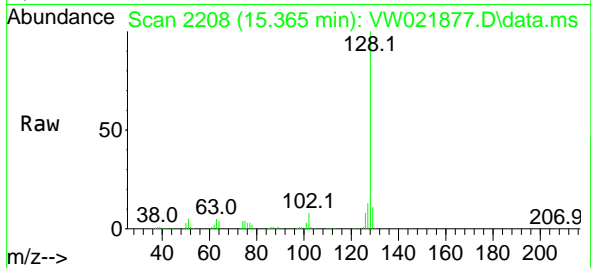


#71
 Naphthalene
 Concen: 28.802 ug/L
 RT: 15.365 min Scan# 21
 Delta R.T. 0.000 min
 Lab File: VW021877.D
 Acq: 13 Jan 2022 08:39

Instrument :
 MSVOA_W
 ClientSampleId :
 VSTD025534

Tgt Ion:128 Resp: 133294

Ion	Ratio	Lower	Upper
128	100		
127	13.5	10.7	16.1
129	10.9	8.6	12.8



#72
 1,2,3-Trichlorobenzene
 Concen: 26.179 ug/L
 RT: 15.548 min Scan# 2238
 Delta R.T. -0.006 min
 Lab File: VW021877.D
 Acq: 13 Jan 2022 08:39

Tgt Ion:180 Resp: 64858

Ion	Ratio	Lower	Upper
180	100		
182	94.9	76.6	114.8
145	32.1	27.4	41.0

