

Data Path : Z:\voasrv\HPCHEM1\MSVOA_W\Data\VW011422\
 Data File : VW021909.D
 Acq On : 14 Jan 2022 13:25
 Operator : SY/VA
 Sample : N1115-12
 Misc : 6.26g/10mL/MSVOA_W/SOIL
 ALS Vial : 1 Sample Multiplier: 1

Instrument :
 MSVOA_W
 ClientSampleId :
 BGLS2

Quant Time: Jan 17 00:46:03 2022
 Quant Method : Z:\voasrv\HPCHEM1\MSVOA_W\Method\SFAMWLM011122SMA.M
 Quant Title : SFAM01.0
 QLast Update : Mon Jan 17 00:44:09 2022
 Response via : Initial Calibration

Compound	R.T.	QIon	Response	Conc	Units	Dev(Min)
Internal Standards						
1) 1,4-Difluorobenzene	8.841	114	148562	25.000	ug/L	# 0.00
28) Chlorobenzene-d5	11.628	117	100830	25.000	ug/L	0.00
58) 1,4-Dichlorobenzene-d4	13.554	152	29717	25.000	ug/L	0.00
System Monitoring Compounds						
4) Vinyl Chloride-d3	2.349	65	51414	18.620	ug/L	0.00
Spiked Amount	25.000	Range 30 - 150	Recovery =	74.480%		
7) Chloroethane-d5	2.879	69	41933	16.817	ug/L	0.00
Spiked Amount	25.000	Range 30 - 150	Recovery =	67.280%		
11) 1,1-Dichloroethene-d2	4.031	63	494095	113.341	ug/L	0.01
Spiked Amount	25.000	Range 45 - 110	Recovery =	453.360%#		
21) 2-Butanone-d5	7.080	46	22580	57.936	ug/L	0.00
Spiked Amount	50.000	Range 20 - 135	Recovery =	115.880%		
24) Chloroform-d	7.647	84	103004	21.462	ug/L	0.00
Spiked Amount	25.000	Range 40 - 150	Recovery =	85.840%		
26) 1,2-Dichloroethane-d4	8.299	65	50183	21.652	ug/L	0.00
Spiked Amount	25.000	Range 70 - 130	Recovery =	86.600%		
32) Benzene-d6	8.274	84	190961	29.187	ug/L	0.00
Spiked Amount	25.000	Range 20 - 135	Recovery =	116.760%		
36) 1,2-Dichloropropane-d6	9.274	67	51558	29.898	ug/L	0.00
Spiked Amount	25.000	Range 70 - 120	Recovery =	119.600%		
41) Toluene-d8	10.323	98	152920	23.186	ug/L	0.00
Spiked Amount	25.000	Range 30 - 130	Recovery =	92.760%		
43) trans-1,3-Dichloroprop...	10.579	79	13821	18.877	ug/L	0.00
Spiked Amount	25.000	Range 30 - 135	Recovery =	75.520%		
47) 2-Hexanone-d5	10.920	63	13198	56.403	ug/L	0.00
Spiked Amount	50.000	Range 20 - 135	Recovery =	112.800%		
56) 1,1,2,2-Tetrachloroeth...	12.688	84	30928	22.936	ug/L	0.00
Spiked Amount	25.000	Range 45 - 120	Recovery =	91.760%		
66) 1,2-Dichlorobenzene-d4	13.853	152	26037	21.308	ug/L	0.00
Spiked Amount	25.000	Range 75 - 120	Recovery =	85.240%		
Target Compounds						
12) 1,1-Dichloroethene	4.037	96	937968	422.987	ug/L	# 53
13) Acetone	4.135	43	4138	12.851	ug/L	76
14) Carbon disulfide	4.379	76	12239	2.108	ug/L	97
17) trans-1,2-Dichloroethene	5.421	96	3618	1.510	ug/L	79
19) 1,1-Dichloroethane	6.214	63	1154356	328.500	ug/L	98
20) cis-1,2-Dichloroethene	7.165	96	134773	54.676	ug/L	68
27) 1,2-Dichloroethane	8.403	62	5726	2.378	ug/L	100
33) Benzene	8.323	78	11611	1.878	ug/L	100
34) Trichloroethene	9.091	95	3443819	1919.900	ug/L	89
42) Toluene	10.384	91	29888	4.310	ug/L	100
45) 1,1,2-Trichloroethane	10.792	97	875	0.765	ug/L	97
46) Tetrachloroethene	10.878	164	11832102	6670.584	ug/L	92
52) Ethylbenzene	11.725	91	4593	0.596	ug/L	91
53) m,p-Xylene	11.829	106	2906	0.902	ug/L	79
54) o-Xylene	12.164	106	6083	2.034	ug/L	87
60) Isopropylbenzene	12.463	105	2194	0.542	ug/L	# 81

(#) = qualifier out of range (m) = manual integration (+) = signals summed

Instrument :

MSVOA_W

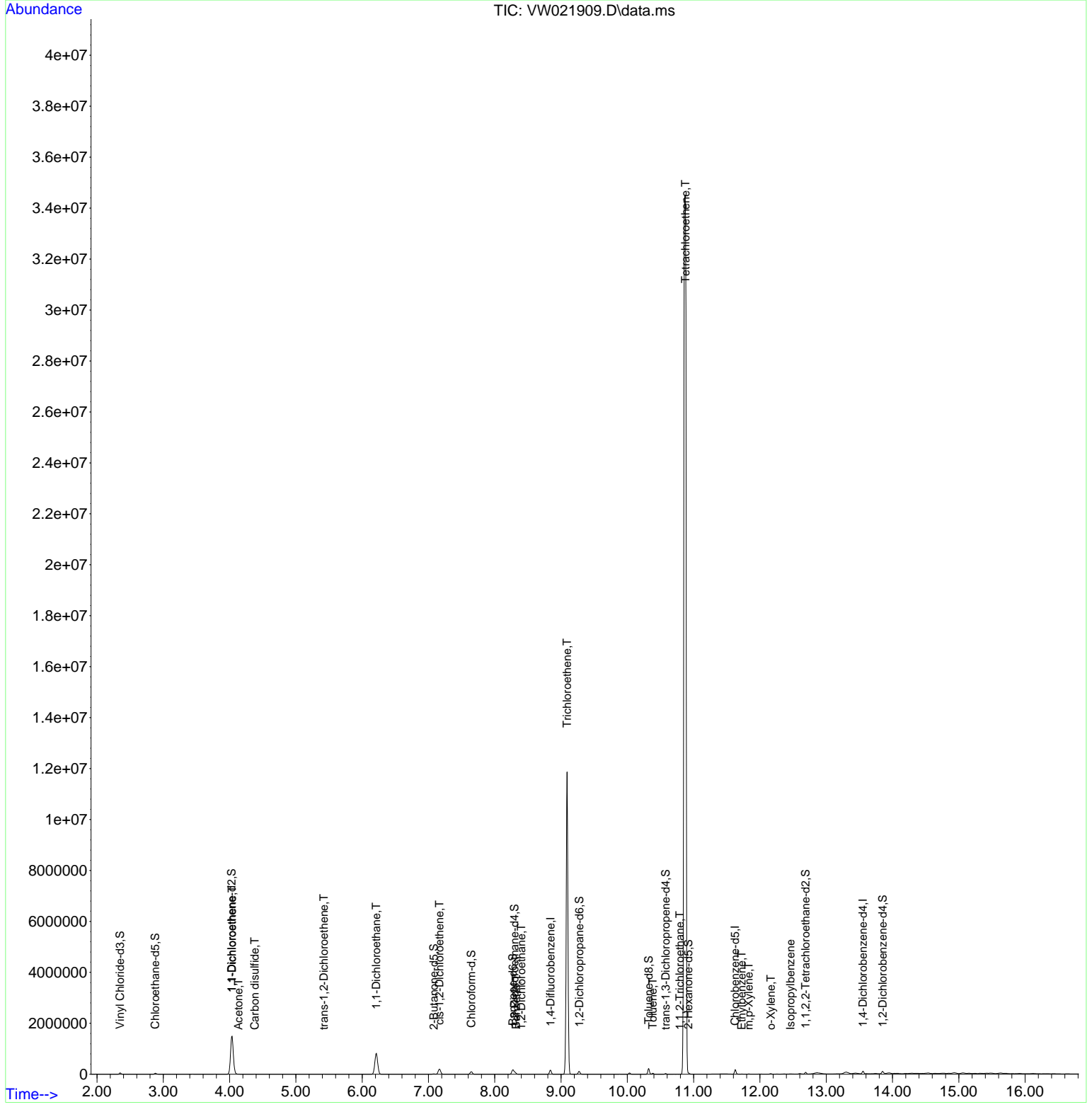
ClientSampleId :

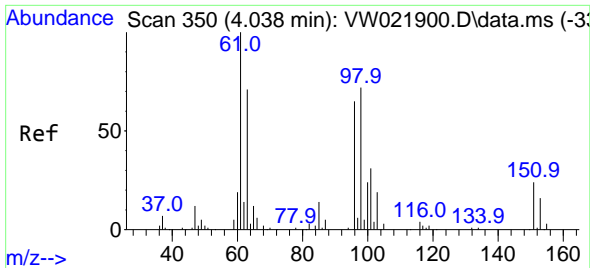
BGLS2

Data Path : Z:\voasrv\HPCHEM1\MSVOA_W\Data\VW011422\
 Data File : VW021909.D
 Acq On : 14 Jan 2022 13:25
 Operator : SY/VA
 Sample : N1115-12
 Misc : 6.26g/10mL/MSVOA_W/SOIL
 ALS Vial : 1 Sample Multiplier: 1

Instrument :
 MSVOA_W
ClientSampleId :
 BGLS2

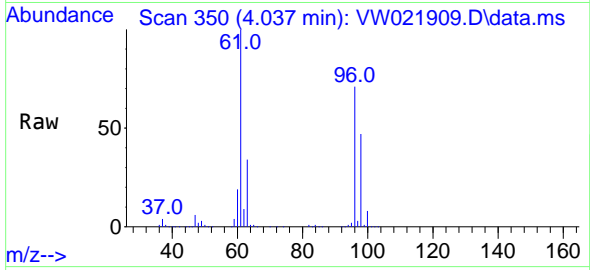
Quant Time: Jan 17 00:46:03 2022
 Quant Method : Z:\voasrv\HPCHEM1\MSVOA_W\Method\SFAMWLM011122SMA.M
 Quant Title : SFAM01.0
 QLast Update : Mon Jan 17 00:44:09 2022
 Response via : Initial Calibration



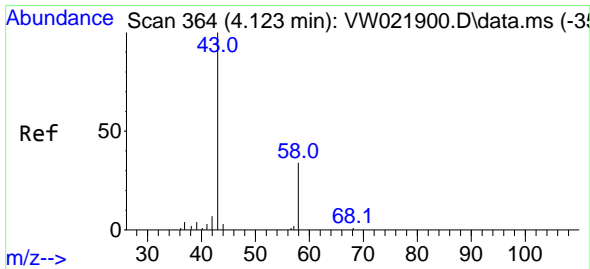
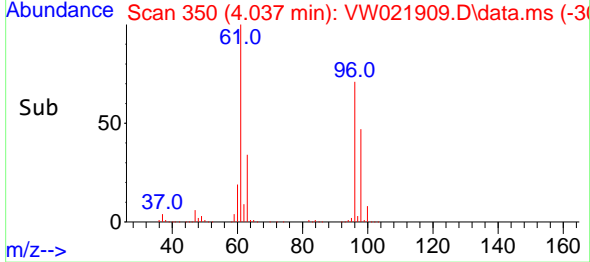
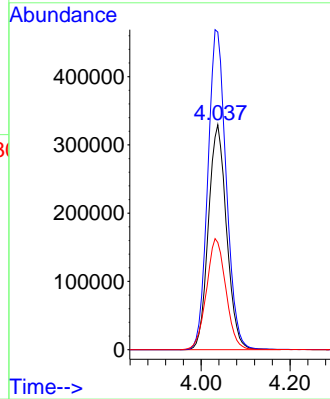


#12
 1,1-Dichloroethene
 Concen: 422.987 ug/L
 RT: 4.037 min Scan# 311
 Delta R.T. -0.000 min
 Lab File: VW021909.D
 Acq: 14 Jan 2022 13:25

Instrument :
 MSVOA_W
 ClientSampleId :
 BGLS2

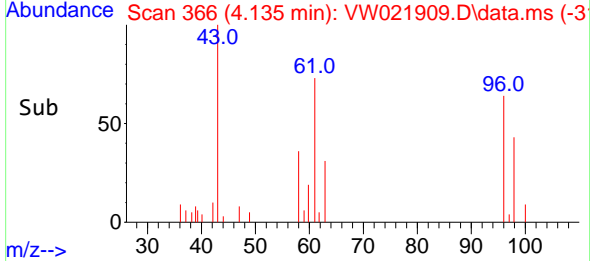
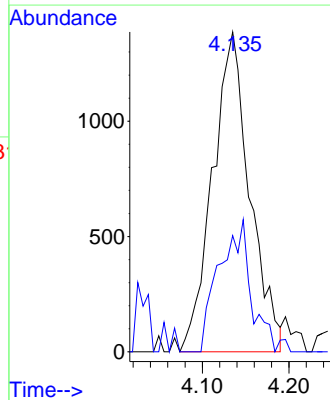
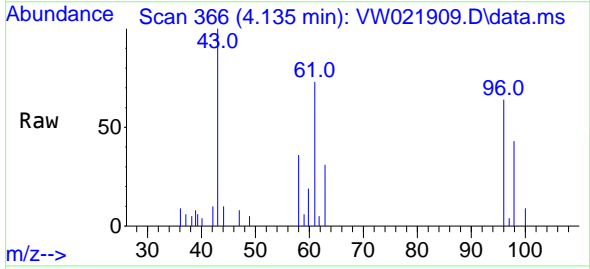


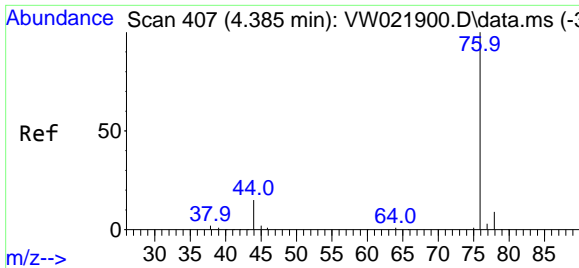
Tgt Ion: 96 Resp: 937968
 Ion Ratio Lower Upper
 96 100
 61 141.2 138.3 256.9
 63 47.7 82.6 153.4#



#13
 Acetone
 Concen: 12.851 ug/L
 RT: 4.135 min Scan# 366
 Delta R.T. 0.012 min
 Lab File: VW021909.D
 Acq: 14 Jan 2022 13:25

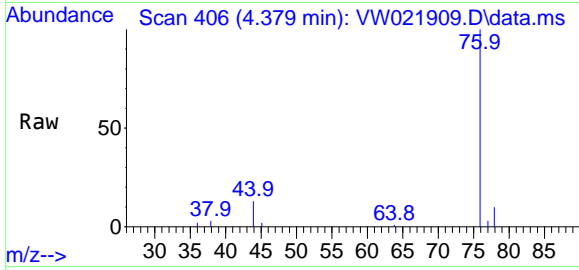
Tgt Ion: 43 Resp: 4138
 Ion Ratio Lower Upper
 43 100
 58 14.2 0.0 52.8



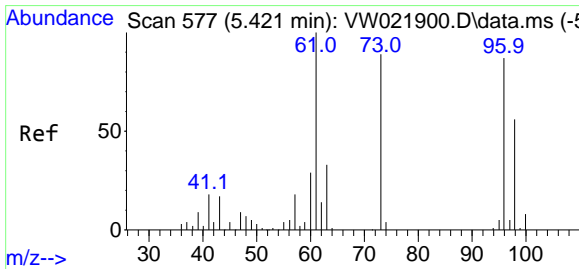
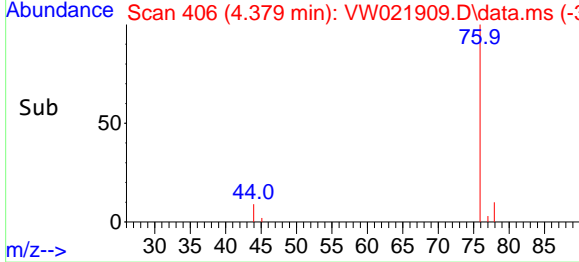
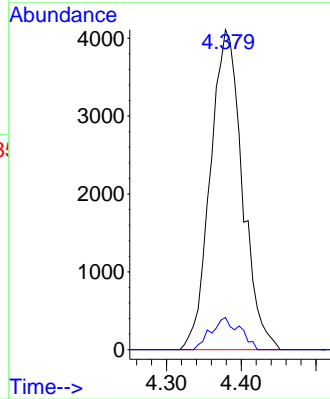


#14
 Carbon disulfide
 Concen: 2.108 ug/L
 RT: 4.379 min Scan# 406
 Delta R.T. -0.006 min
 Lab File: VW021909.D
 Acq: 14 Jan 2022 13:25

Instrument : MSVOA_W
 ClientSampleId : BGLS2

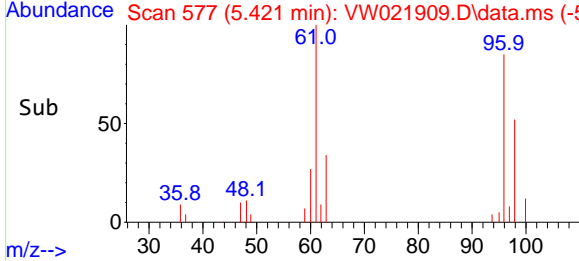
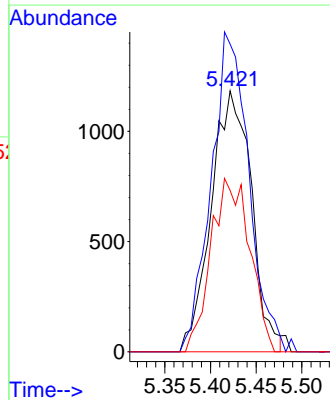
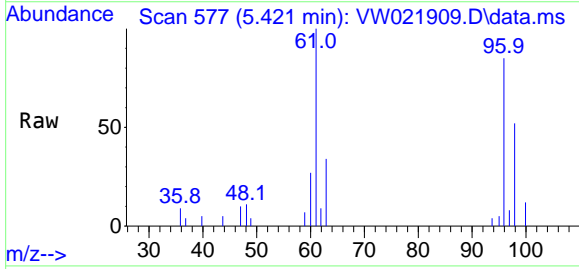


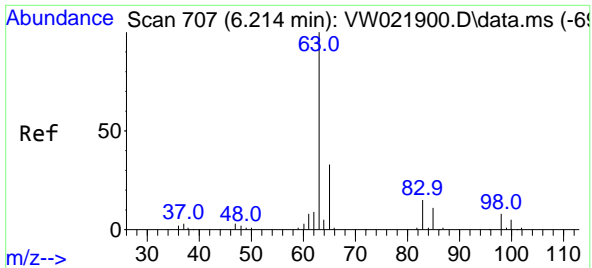
Tgt Ion: 76 Resp: 12239
 Ion Ratio Lower Upper
 76 100
 78 10.0 7.1 10.7



#17
 trans-1,2-Dichloroethene
 Concen: 1.510 ug/L
 RT: 5.421 min Scan# 577
 Delta R.T. -0.000 min
 Lab File: VW021909.D
 Acq: 14 Jan 2022 13:25

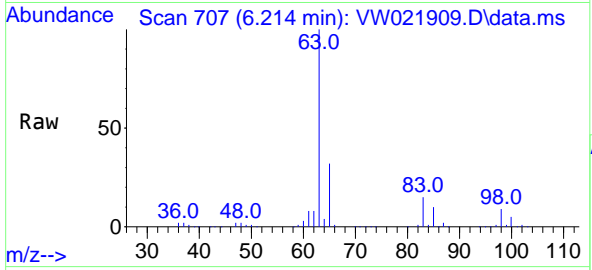
Tgt Ion: 96 Resp: 3618
 Ion Ratio Lower Upper
 96 100
 61 117.9 107.4 199.4
 98 61.8 41.2 76.6





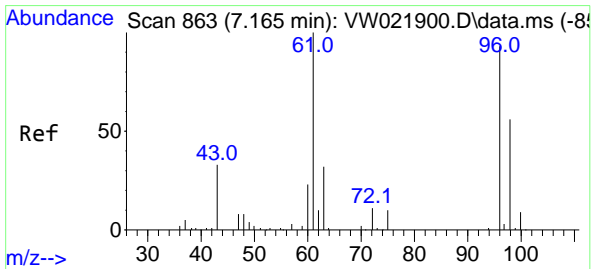
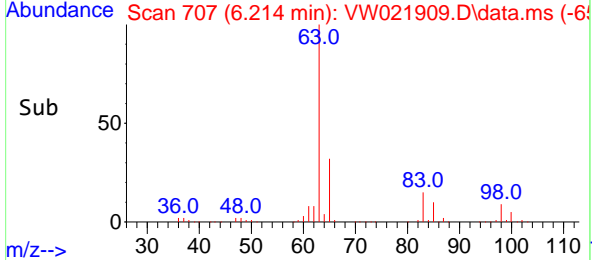
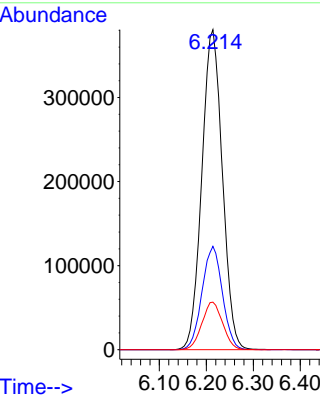
#19
 1,1-Dichloroethane
 Concen: 328.500 ug/L
 RT: 6.214 min Scan# 707
 Delta R.T. -0.000 min
 Lab File: VW021909.D
 Acq: 14 Jan 2022 13:25

Instrument : MSVOA_W
 ClientSampleId : BGLS2

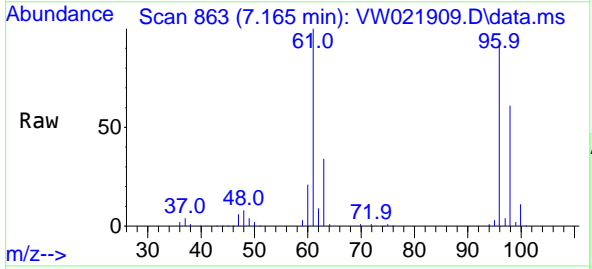


Tgt Ion: 63 Resp: 1154356

Ion	Ratio	Lower	Upper
63	100		
65	32.3	22.1	41.1
83	14.8	9.2	17.2

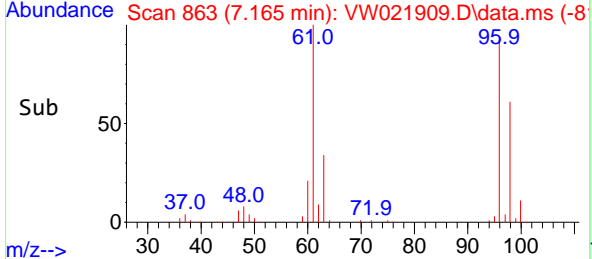
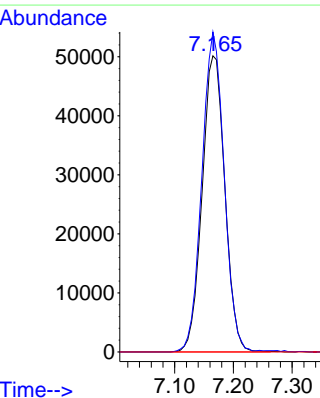


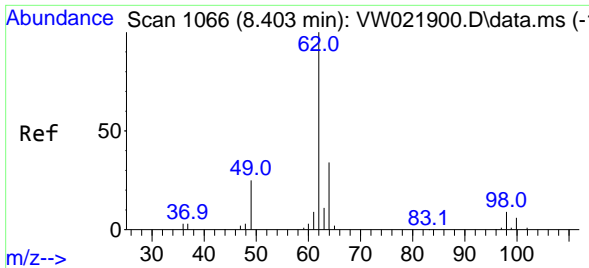
#20
 cis-1,2-Dichloroethene
 Concen: 54.676 ug/L
 RT: 7.165 min Scan# 863
 Delta R.T. -0.000 min
 Lab File: VW021909.D
 Acq: 14 Jan 2022 13:25



Tgt Ion: 96 Resp: 134773

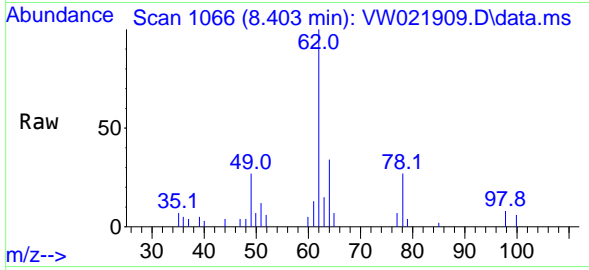
Ion	Ratio	Lower	Upper
96	100		
61	108.1	103.7	192.7
68	0.0	0.0	0.0



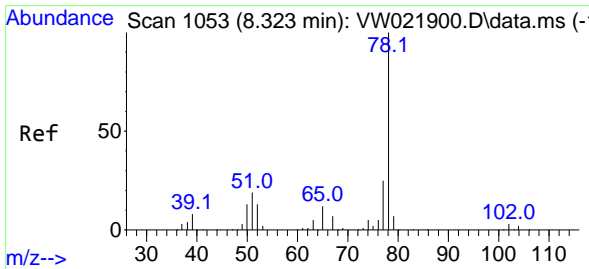
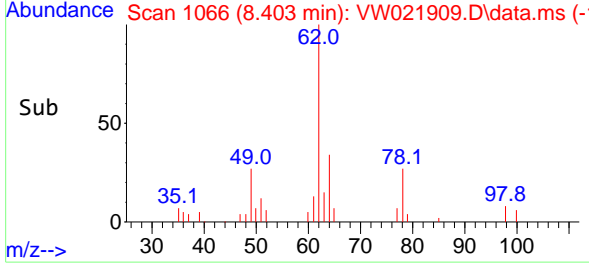
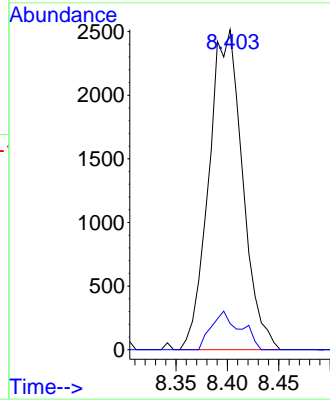


#27
 1,2-Dichloroethane
 Concen: 2.378 ug/L
 RT: 8.403 min Scan# 1066
 Delta R.T. -0.000 min
 Lab File: VW021909.D
 Acq: 14 Jan 2022 13:25

Instrument : MSVOA_W
 ClientSampleId : BGLS2

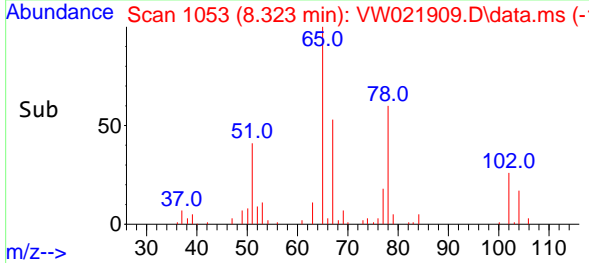
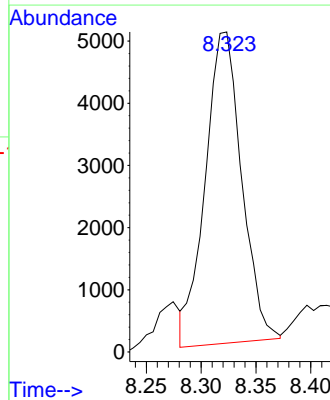
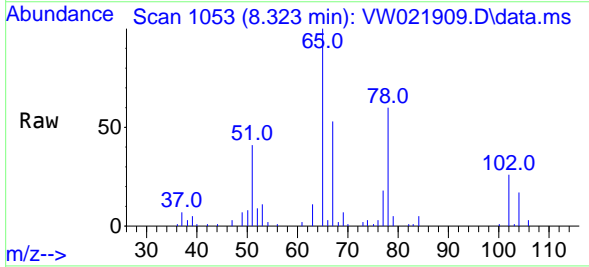


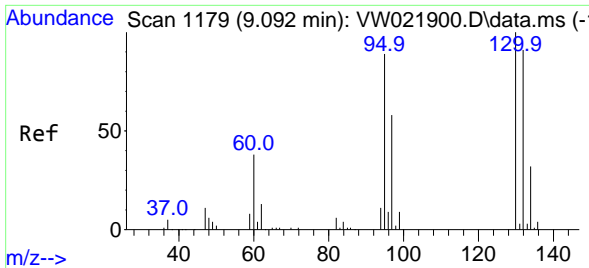
Tgt Ion: 62 Resp: 5726
 Ion Ratio Lower Upper
 62 100
 98 8.2 6.5 9.7



#33
 Benzene
 Concen: 1.878 ug/L
 RT: 8.323 min Scan# 1053
 Delta R.T. -0.000 min
 Lab File: VW021909.D
 Acq: 14 Jan 2022 13:25

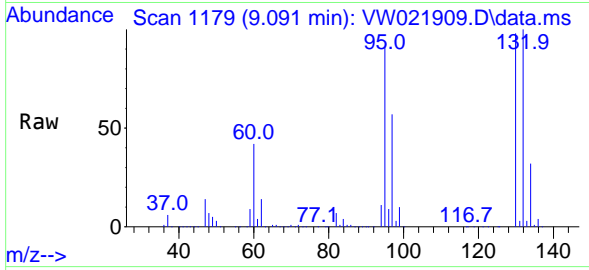
Tgt Ion: 78 Resp: 11611



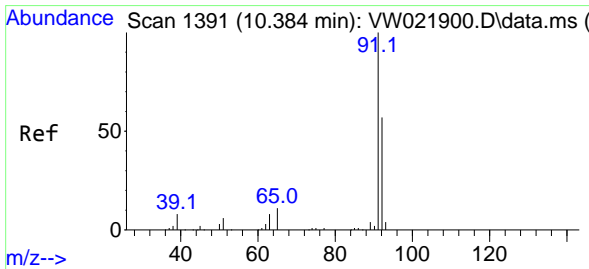
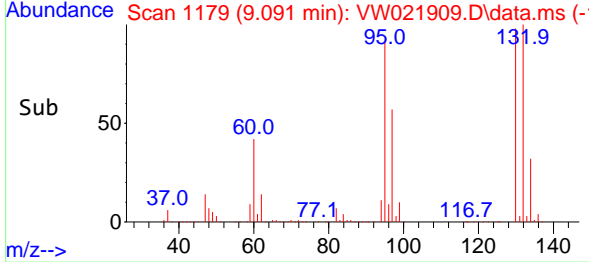
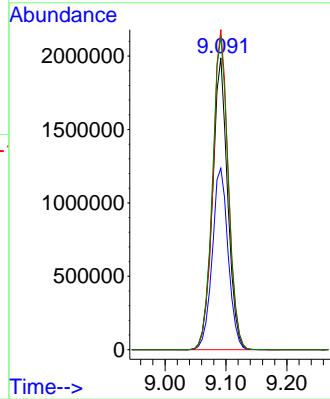


#34
 Trichloroethene
 Concen: 1919.900 ug/L
 RT: 9.091 min Scan# 1179
 Delta R.T. -0.000 min
 Lab File: VW021909.D
 Acq: 14 Jan 2022 13:25

Instrument : MSVOA_W
 ClientSampleId : BGLS2

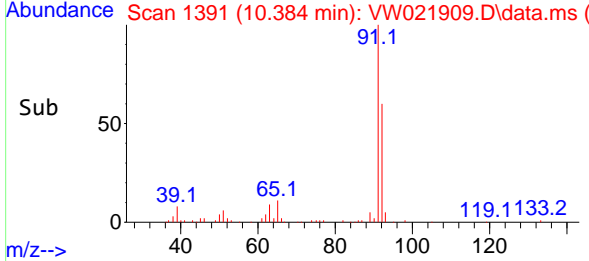
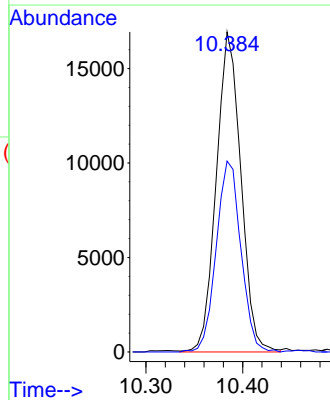
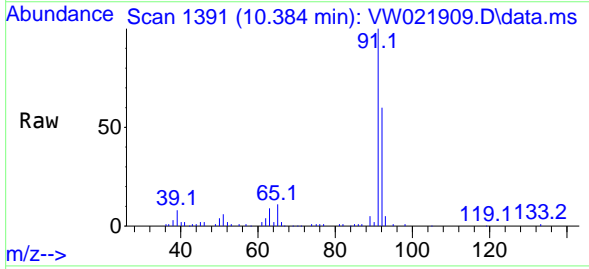


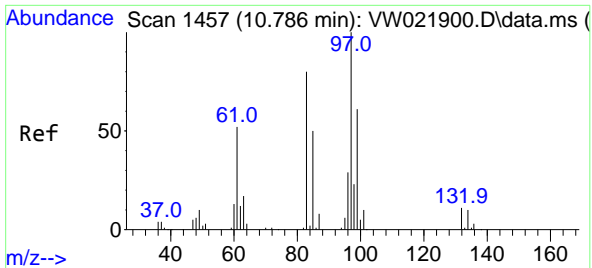
Tgt Ion: 95 Resp: 3443819
 Ion Ratio Lower Upper
 95 100
 97 62.2 47.0 87.2
 132 109.6 65.5 121.6
 130 107.3 69.4 128.8



#42
 Toluene
 Concen: 4.310 ug/L
 RT: 10.384 min Scan# 1391
 Delta R.T. -0.000 min
 Lab File: VW021909.D
 Acq: 14 Jan 2022 13:25

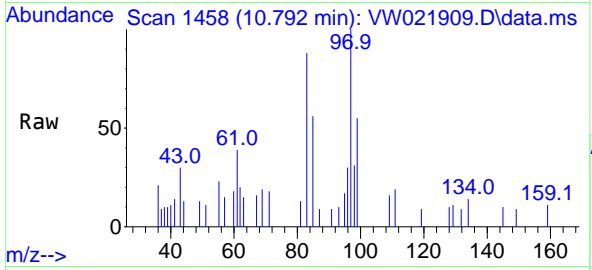
Tgt Ion: 91 Resp: 29888
 Ion Ratio Lower Upper
 91 100
 92 59.6 41.7 77.5





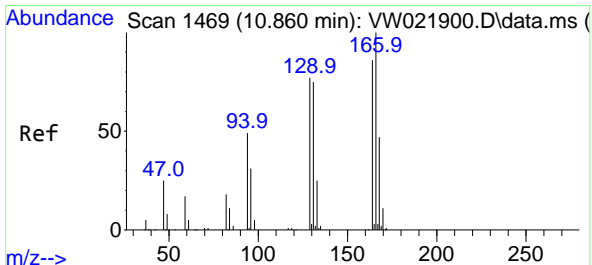
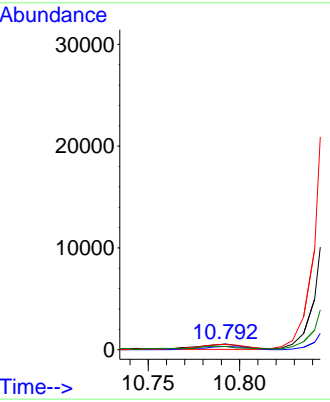
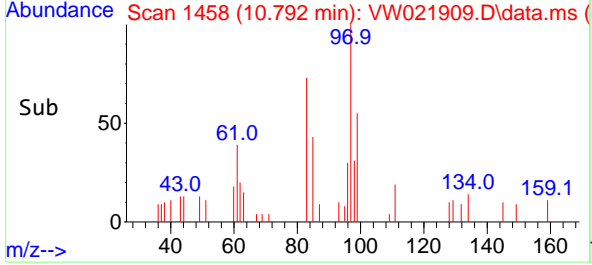
#45
 1,1,2-Trichloroethane
 Concen: 0.765 ug/L
 RT: 10.792 min Scan# 1457
 Delta R.T. 0.006 min
 Lab File: VW021909.D
 Acq: 14 Jan 2022 13:25

Instrument : MSVOA_W
 ClientSampleId : BGLS2

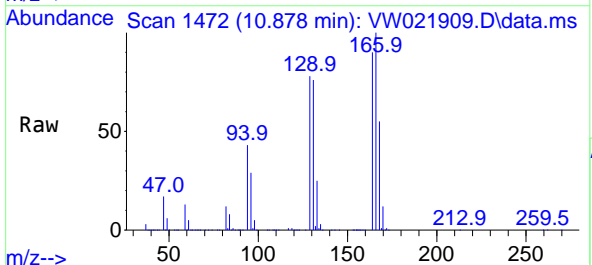


Tgt Ion: 97 Resp: 875

Ion	Ratio	Lower	Upper
97	100		
99	54.7	43.0	79.8
83	88.3	62.6	116.3
85	56.3	40.0	74.2

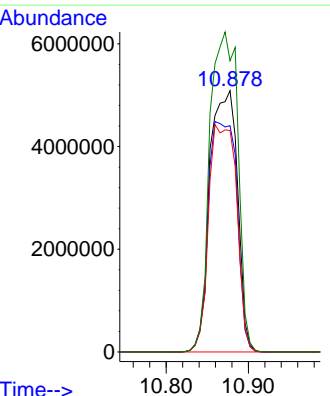
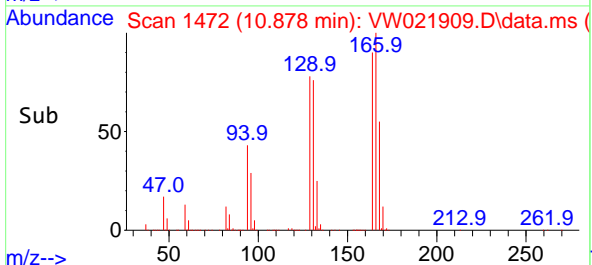


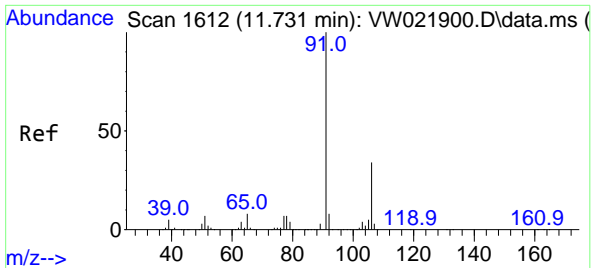
#46
 Tetrachloroethene
 Concen: 6670.584 ug/L
 RT: 10.878 min Scan# 1472
 Delta R.T. 0.018 min
 Lab File: VW021909.D
 Acq: 14 Jan 2022 13:25



Tgt Ion: 164 Resp: 11832102

Ion	Ratio	Lower	Upper
164	100		
129	86.6	65.5	121.7
131	84.7	59.7	110.9
166	111.4	88.7	164.7



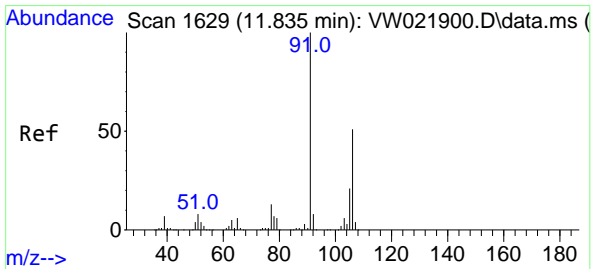
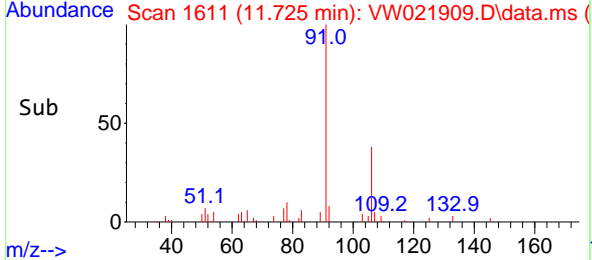
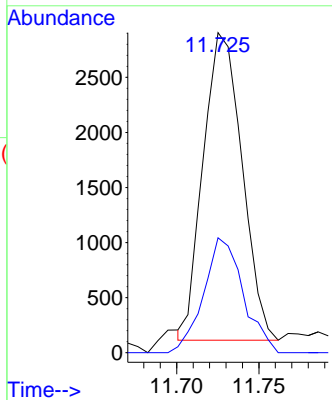
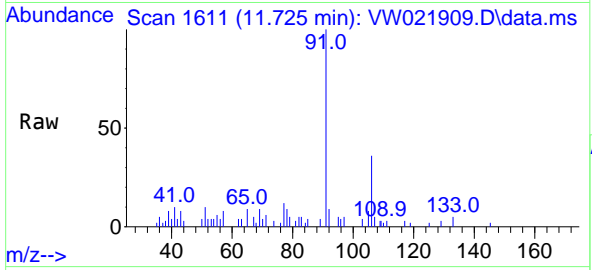


#52
 Ethylbenzene
 Concen: 0.596 ug/L
 RT: 11.725 min Scan# 11
 Delta R.T. -0.006 min
 Lab File: VW021909.D
 Acq: 14 Jan 2022 13:25

Instrument : MSVOA_W
 ClientSampleId : BGLS2

Tgt Ion: 91 Resp: 4593

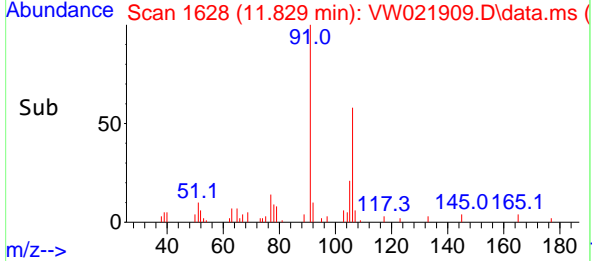
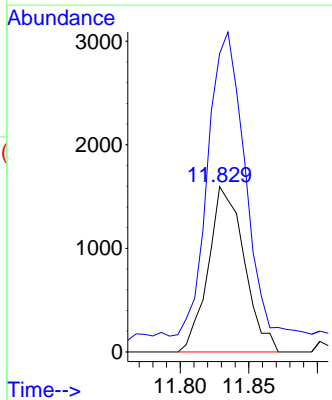
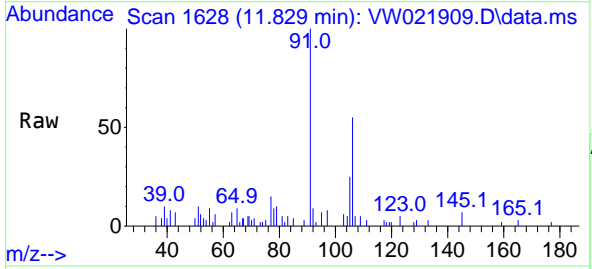
Ion	Ratio	Lower	Upper
91	100		
106	35.9	21.5	39.9

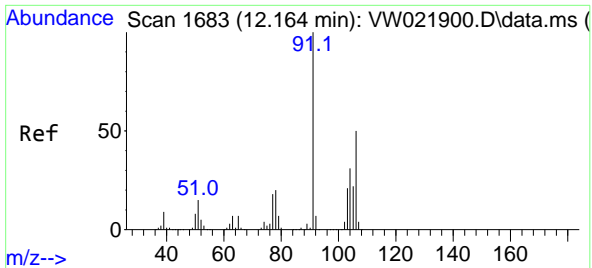


#53
 m,p-Xylene
 Concen: 0.902 ug/L
 RT: 11.829 min Scan# 1628
 Delta R.T. -0.006 min
 Lab File: VW021909.D
 Acq: 14 Jan 2022 13:25

Tgt Ion: 106 Resp: 2906

Ion	Ratio	Lower	Upper
106	100		
91	180.5	149.9	278.3

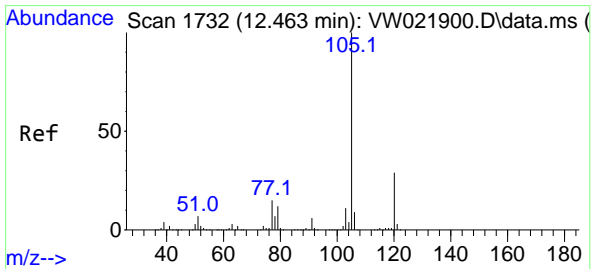
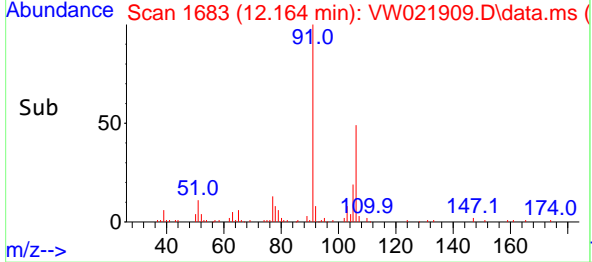
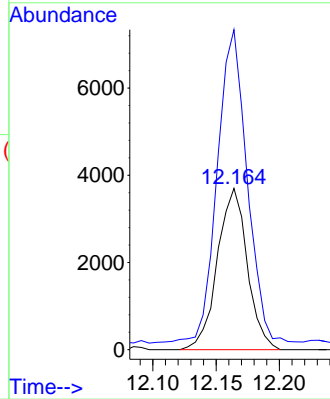
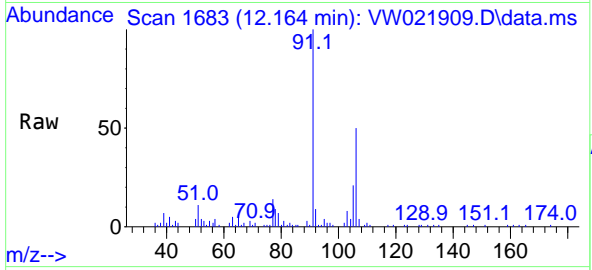




#54
 o-Xylene
 Concen: 2.034 ug/L
 RT: 12.164 min Scan# 1
 Delta R.T. -0.000 min
 Lab File: VW021909.D
 Acq: 14 Jan 2022 13:25

Instrument :
 MSVOA_W
 ClientSampleId :
 BGLS2

Tgt Ion:106 Resp: 6083
 Ion Ratio Lower Upper
 106 100
 91 198.5 153.6 285.3



#60
 Isopropylbenzene
 Concen: 0.542 ug/L
 RT: 12.463 min Scan# 1732
 Delta R.T. -0.000 min
 Lab File: VW021909.D
 Acq: 14 Jan 2022 13:25

Tgt Ion:105 Resp: 2194
 Ion Ratio Lower Upper
 105 100
 120 14.5 20.1 30.1#
 77 10.3 13.8 20.8#

