

Data Path : Z:\VOASRV\HPCHEM1\MSVOA W\DATA\VW011519\
 Data File : VW008292.D
 Acq On : 15 Jan 2019 20:02
 Operator : SY/VA
 Sample : K1147-22
 Misc : 6.25G/5ML/MSVOA W/SOIL
 ALS Vial : 16 Sample Multiplier: 1

Instrument :
 MSVOA_W
 ClientSampleId :
 TP-8

Integration Parameters: RTEINT.P

Integrator: RTE
 Smoothing : ON Filtering: 5
 Sampling : 1 Min Area: 3 % of largest Peak
 Start Thrs: 0.2 Max Peaks: 100
 Stop Thrs : 0 Peak Location: TOP

If leading or trailing edge < 100 prefer < Baseline drop else tangent >
 Peak separation: 5

Method : Z:\VOASRV\HPCHEM1\MSVOA_W\METHOD\82W010819S.M
 Title : SW846 8260

Signal : TIC

peak #	R.T. min	first scan	max scan	last scan	PK TY	peak height	corr. area	corr. % max.	% of total
1	4.123	356	364	372	rBV2	3911	9373	1.96%	0.359%
2	4.903	484	492	506	rBV4	7834	29542	6.18%	1.132%
3	7.141	848	859	869	rBV	38527	112263	23.48%	4.301%
4	7.884	970	981	986	rBV2	66119	163707	34.24%	6.272%
5	7.945	986	991	1000	rVB	107968	231875	48.50%	8.883%
6	8.305	1039	1050	1061	rVB	63418	147119	30.77%	5.636%
7	8.841	1126	1138	1146	rBV	172286	332637	69.57%	12.743%
8	10.323	1374	1381	1389	rBV	277887	478138	100.00%	18.317%
9	10.707	1438	1444	1449	rBV3	3795	7213	1.51%	0.276%
10	11.067	1498	1503	1508	rBV6	3175	6265	1.31%	0.240%
11	11.634	1586	1596	1604	rBV	236492	402168	84.11%	15.407%
12	12.621	1750	1758	1765	rBV	192006	300017	62.75%	11.494%
13	13.560	1906	1912	1919	rVB	250996	389970	81.56%	14.940%

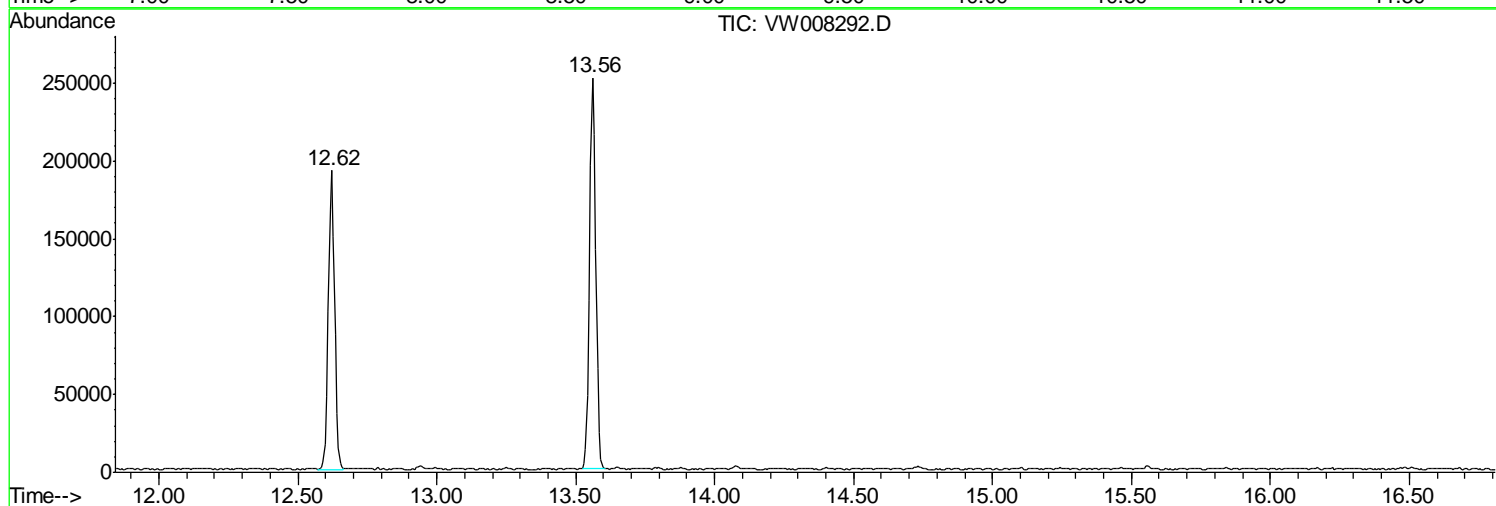
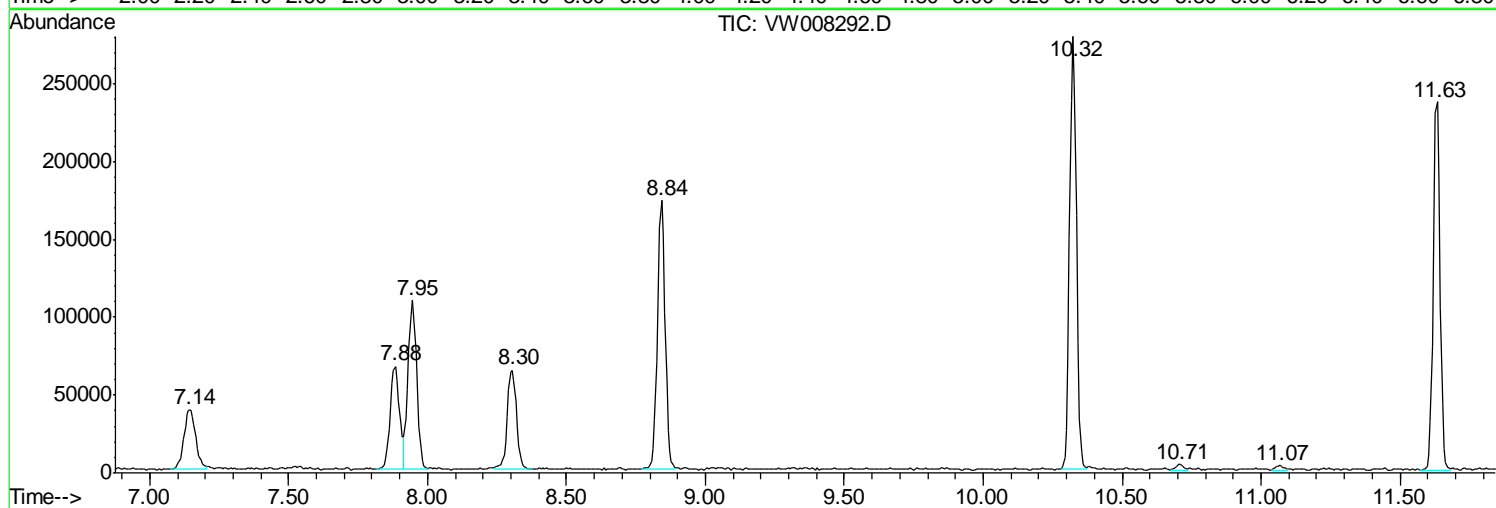
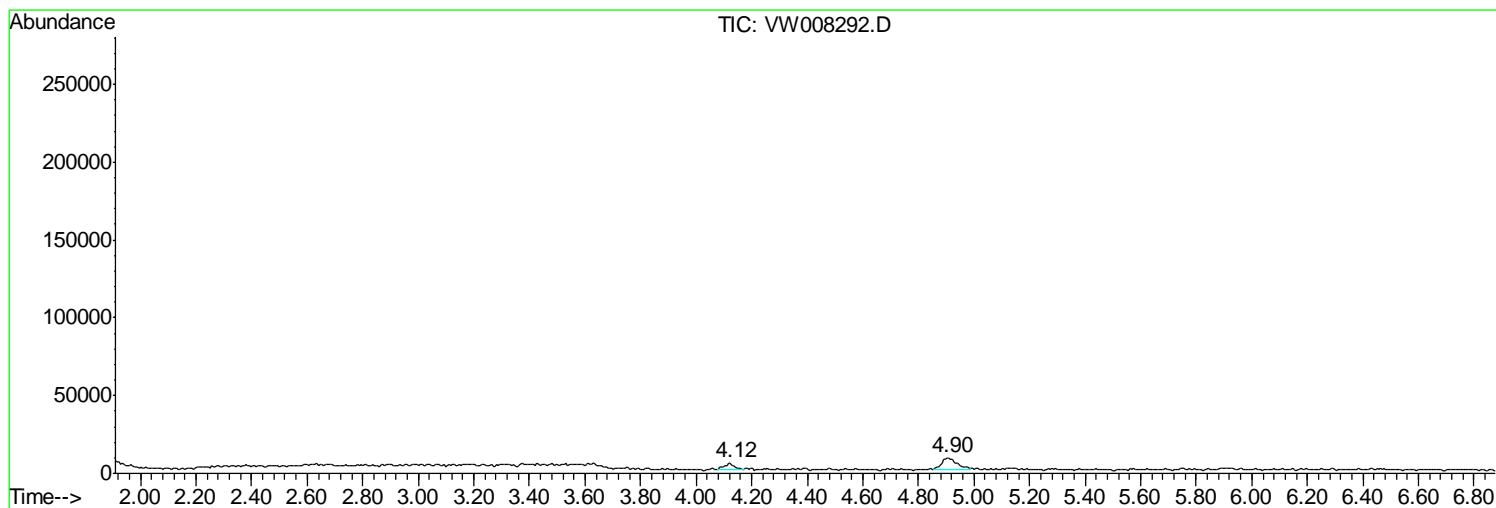
Sum of corrected areas: 2610287

Data Path : Z:\VOASRV\HPCHEM1\MSVOA W\DATA\VW011519\
Data File : VW008292.D
Acq On : 15 Jan 2019 20:02
Operator : SY/VA
Sample : K1147-22
Misc : 6.25G/5ML/MSVOA W/SOIL
ALS Vial : 16 Sample Multiplier: 1

Instrument :
MSVOA_W
ClientSampled :
TP-8

Quant Method : Z:\VOASRV\HPCHEM1\MSVOA_W\METHOD\82W010819S.M
Quant Title : SW846 8260

TIC Library : C:\DATABASE\NIST11.L
TIC Integration Parameters: LSCINT.P



Data Path : Z:\VOASRV\HPCHEM1\MSVOA_W\DATA\VW011519\
Data File : VW008292.D
Acq On : 15 Jan 2019 20:02
Operator : SY/VA
Sample : K1147-22
Misc : 6.25G/5ML/MSVOA_W/SOIL
ALS Vial : 16 Sample Multiplier: 1

Instrument :
MSVOA_W
ClientSampleId :
TP-8

Quant Method : Z:\VOASRV\HPCHEM1\MSVOA_W\METHOD\82W010819S.M
Quant Title : SW846 8260

TIC Library : C:\DATABASE\NIST11.L
TIC Integration Parameters: LSCINT.P

No Library Search Compounds Detected

Data Path : Z:\VOASRV\HPCHEM1\MSVOA_W\DATA\VW011519\
Data File : VW008292.D
Acq On : 15 Jan 2019 20:02
Operator : SY/VA
Sample : K1147-22
Misc : 6.25G/5ML/MSVOA_W/SOIL
ALS Vial : 16 Sample Multiplier: 1

Instrument :
MSVOA_W
ClientSampleId :
TP-8

Quant Method : Z:\VOASRV\HPCHEM1\MSVOA_W\METHOD\82W010819S.M
Quant Title : SW846 8260

TIC Library : C:\DATABASE\NIST11.L
TIC Integration Parameters: LSCINT.P

TIC Top Hit name	RT	EstConc	Units	Response	--Internal Standard--			
					#	RT	Resp	Conc
