

Data Path : Z:\VOASRV\HPCHEM1\MSVOA W\DATA\VW011619\
 Data File : VW008311.D
 Acq On : 16 Jan 2019 16:29
 Operator : SY/VA
 Sample : K1012-09
 Misc : 6.12G/5ML/MSVOA W/SOIL
 ALS Vial : 13 Sample Multiplier: 1

Instrument :
 MSVOA_W
 ClientSampled :
 EO-01-011519-B

Quant Time: Jan 17 06:12:54 2019
 Quant Method : Z:\VOASRV\HPCHEM1\MSVOA_W\METHOD\82W010819S.M
 Quant Title : SW846 8260
 QLast Update : Wed Jan 09 04:40:48 2019
 Response via : Initial Calibration

Internal Standards	R.T.	QIon	Response	Conc	Units	Dev(Min)
1) Pentafluorobenzene	7.95	168	105215	50.00	ug/l	0.00
34) 1,4-Difluorobenzene	8.84	114	176250	50.00	ug/l	0.00
63) Chlorobenzene-d5	11.63	117	156737	50.00	ug/l	0.00
72) 1,4-Dichlorobenzene-d4	13.56	152	66477	50.00	ug/l	0.00

System Monitoring Compounds

33) 1,2-Dichloroethane-d4	8.31	65	57724	48.81	ug/l	0.00
Spiked Amount				50.000		
			Recovery	=	97.62%	
35) Dibromofluoromethane	7.88	113	56182	54.65	ug/l	0.00
Spiked Amount				50.000		
			Recovery	=	109.30%	
50) Toluene-d8	10.32	98	219494	50.88	ug/l	0.00
Spiked Amount				50.000		
			Recovery	=	101.76%	
62) 4-Bromofluorobenzene	12.62	95	70879	45.83	ug/l	0.00
Spiked Amount				50.000		
			Recovery	=	91.66%	

Target Compounds

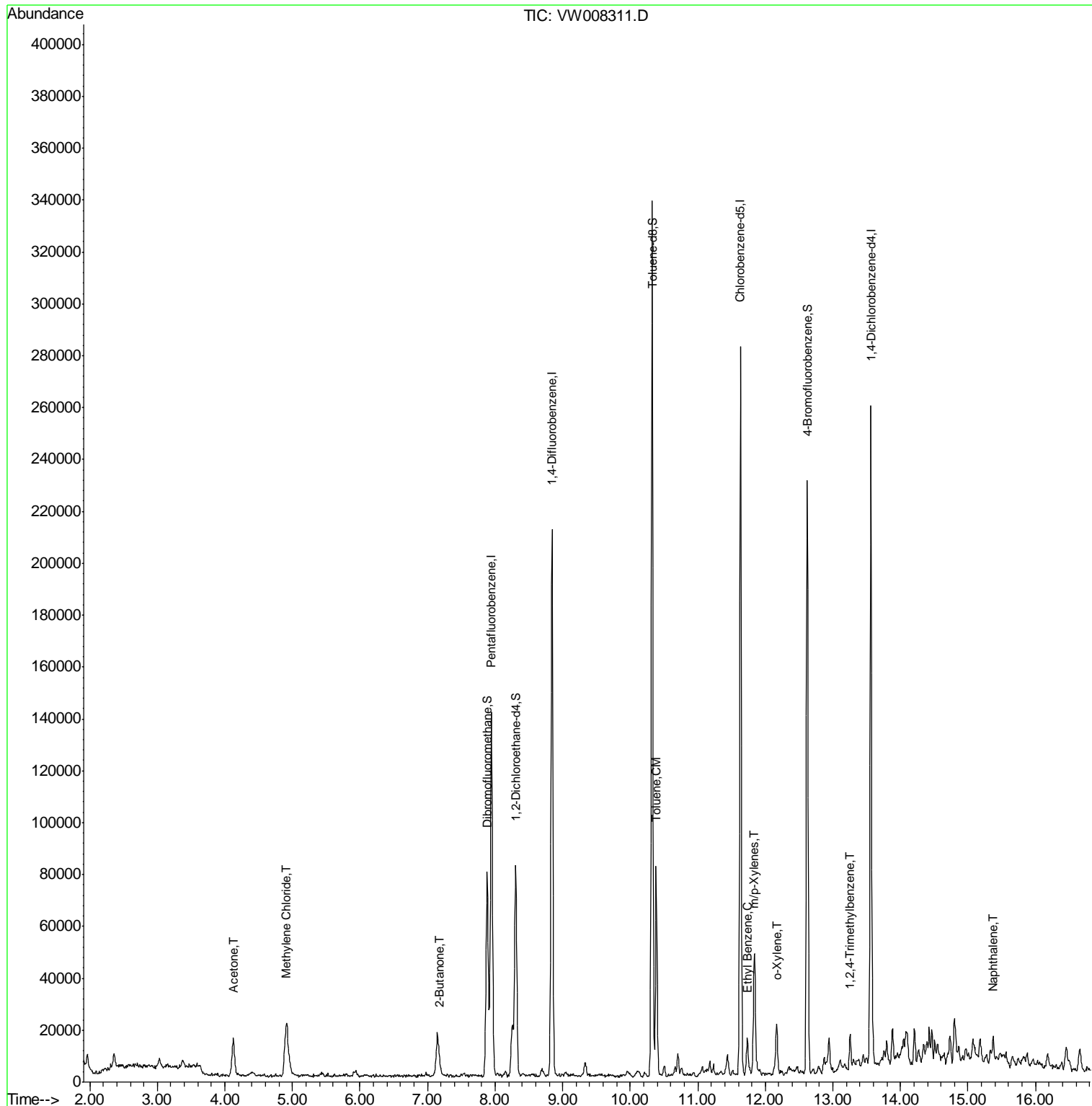
					Qvalue	
16) Acetone	4.12	43	25254	106.685	ug/l	92
20) Methylene Chloride	4.91	84	18228	12.002	ug/l	92
25) 2-Butanone	7.18	43	5009	15.224	ug/l	92
52) Toluene	10.39	92	34404	10.940	ug/l	99
67) Ethyl Benzene	11.73	91	8768	1.443	ug/l	94
68) m/p-Xylenes	11.84	106	14498	6.252	ug/l	96
69) o-Xylene	12.17	106	5142	2.394	ug/l	94
84) 1,2,4-Trimethylbenzene	13.26	105	6638	1.501	ug/l	90
95) Naphthalene	15.37	128	7801	3.201	ug/l #	95

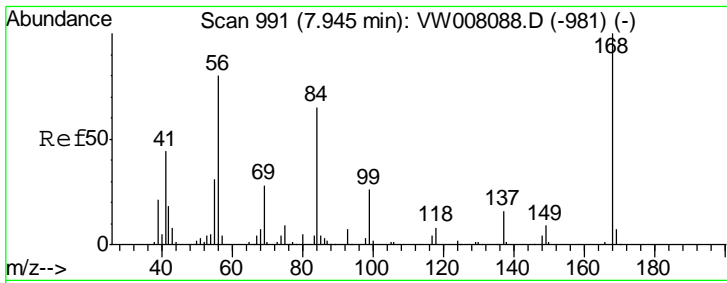
(#) = qualifier out of range (m) = manual integration (+) = signals summed

Data Path : Z:\VOASRV\HPCHEM1\MSVOA W\DATA\VW011619\
 Data File : VW008311.D
 Acq On : 16 Jan 2019 16:29
 Operator : SY/VA
 Sample : K1012-09
 Misc : 6.12G/5ML/MSVOA W/SOIL
 ALS Vial : 13 Sample Multiplier: 1

Instrument :
 MSVOA_W
 ClientSampleId :
 EO-01-011519-B

Quant Time: Jan 17 06:12:54 2019
 Quant Method : Z:\VOASRV\HPCHEM1\MSVOA_W\METHOD\82W010819S.M
 Quant Title : SW846 8260
 QLast Update : Wed Jan 09 04:40:48 2019
 Response via : Initial Calibration

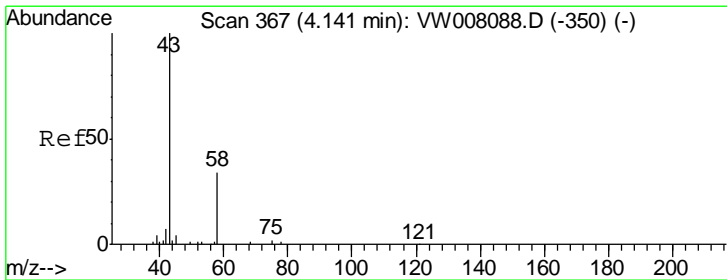
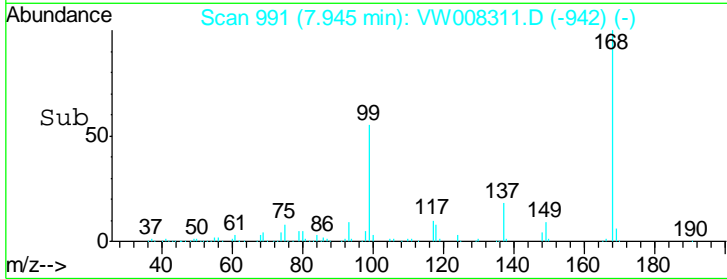
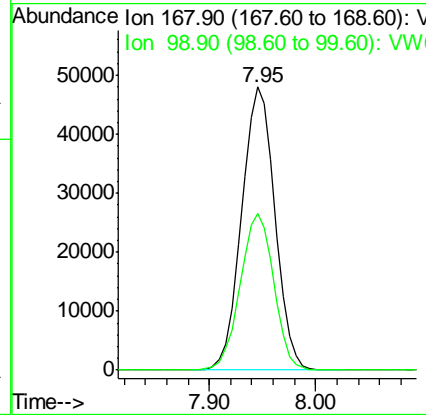
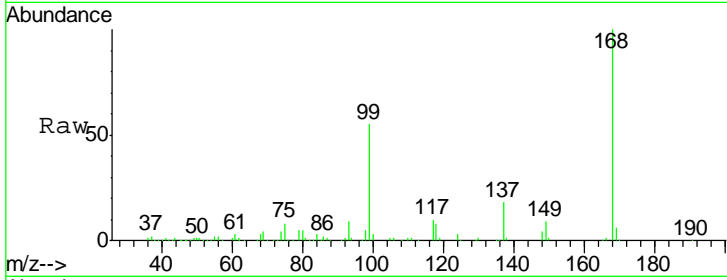




#1
 Pentafluorobenzene
 Concen: 50.000 ug/l
 RT: 7.95 min Scan# 991
 Delta R.T. -0.00 min
 Lab File: VW008311.D
 Acq: 16 Jan 2019 16:29

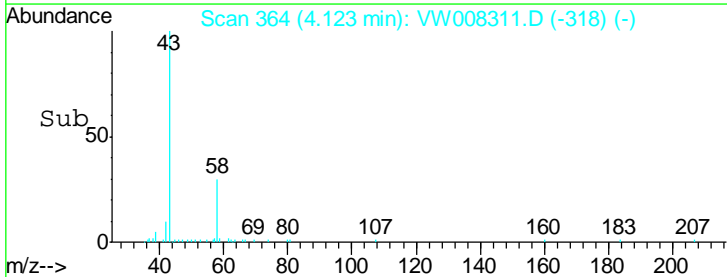
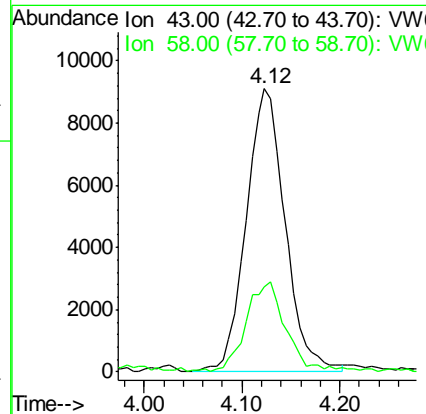
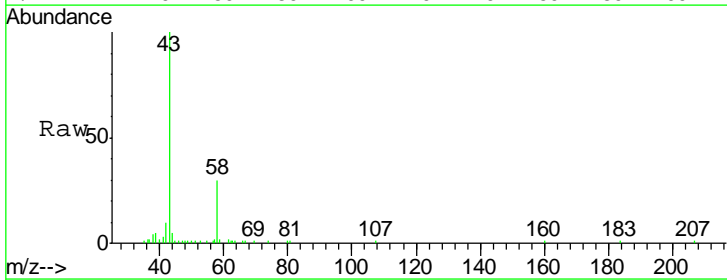
Instrument :
 MSVOA_W
 ClientSampled :
 EO-01-011519-B

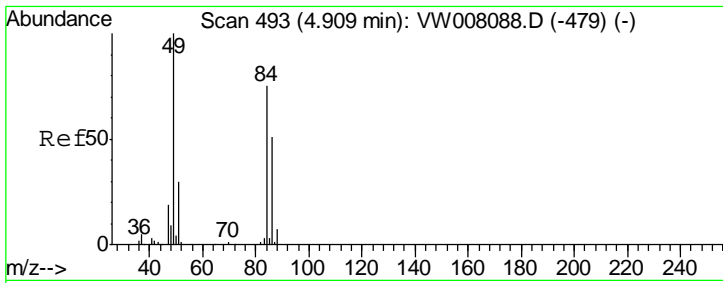
Tgt Ion: 168 Resp: 105215
 Ion Ratio Lower Upper
 168 100
 99 55.4 52.6 78.8



#16
 Acetone
 Concen: 106.685 ug/l
 RT: 4.12 min Scan# 364
 Delta R.T. -0.02 min
 Lab File: VW008311.D
 Acq: 16 Jan 2019 16:29

Tgt Ion: 43 Resp: 25254
 Ion Ratio Lower Upper
 43 100
 58 29.5 27.5 41.3

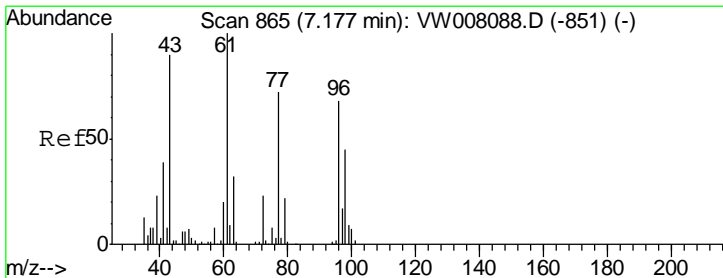
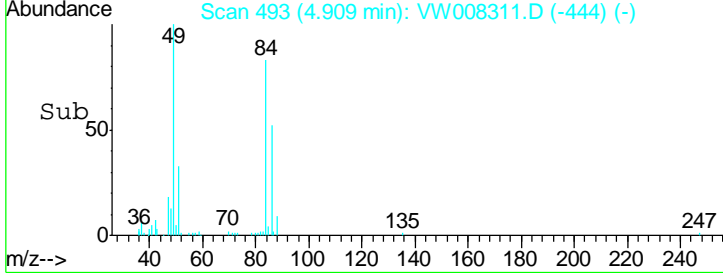
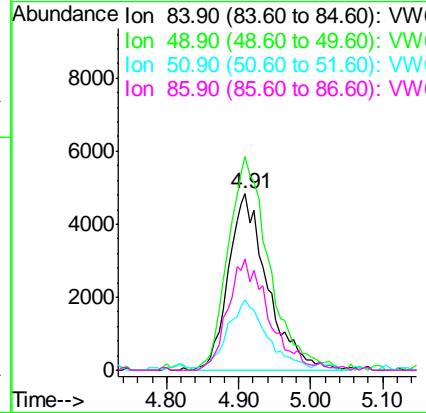
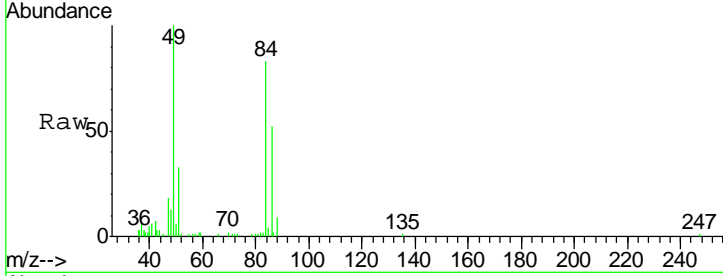




#20
 Methylene Chloride
 Concen: 12.002 ug/l
 RT: 4.91 min Scan# 493
 Delta R.T. 0.00 min
 Lab File: VW008311.D
 Acq: 16 Jan 2019 16:29

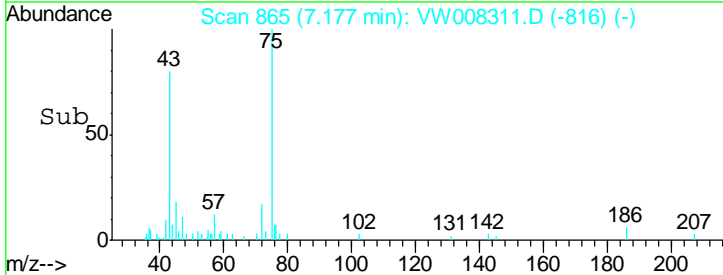
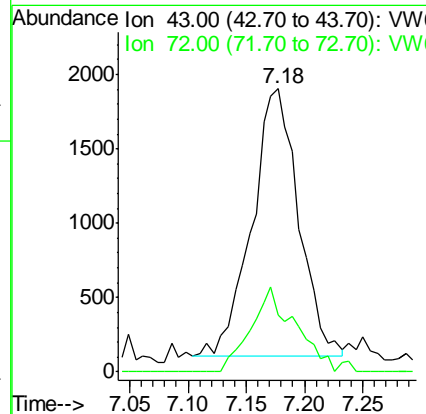
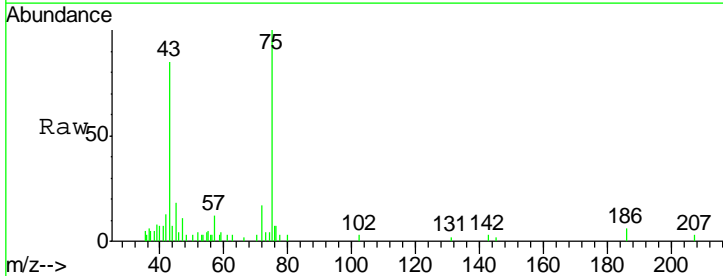
Instrument :
 MSVOA_W
 ClientSampled :
 EO-01-011519-B

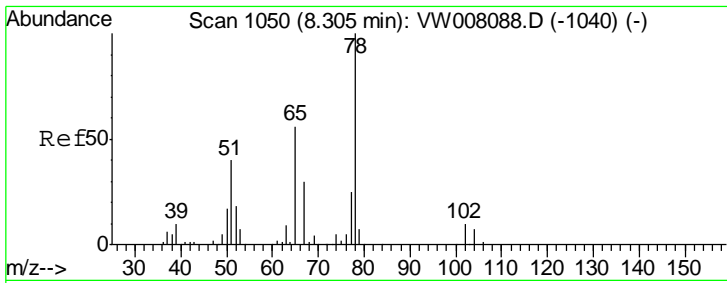
Tgt Ion	Resp	Lower	Upper
84	18228		
49	121.1	107.1	160.7
51	39.8	32.4	48.6
86	63.0	54.2	81.4



#25
 2-Butanone
 Concen: 15.224 ug/l
 RT: 7.18 min Scan# 865
 Delta R.T. -0.00 min
 Lab File: VW008311.D
 Acq: 16 Jan 2019 16:29

Tgt Ion	Resp	Lower	Upper
43	5009		
72	21.5	20.5	30.7

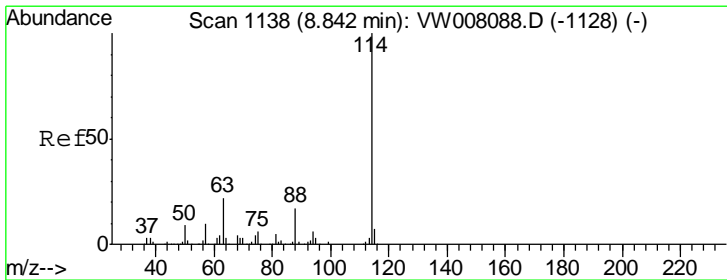
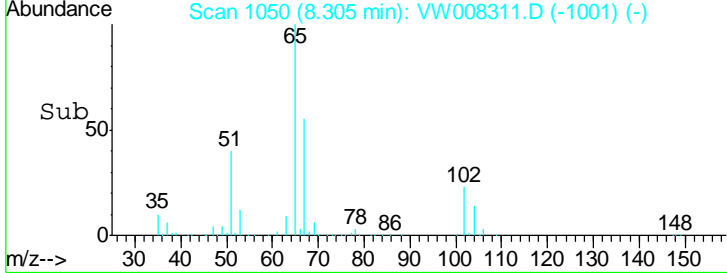
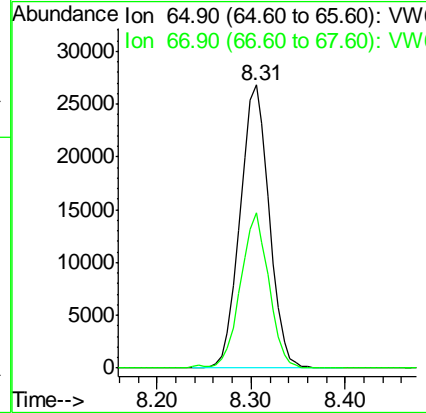
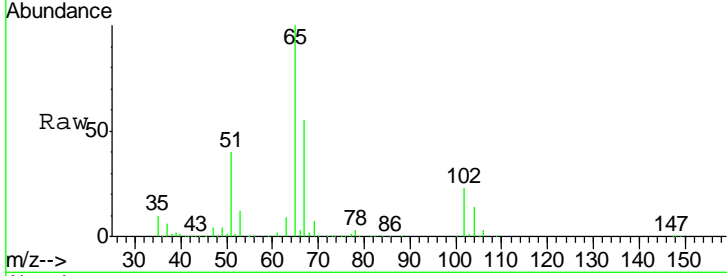




#33
 1,2-Dichloroethane-d4
 Concen: 48.814 ug/l
 RT: 8.31 min Scan# 1050
 Delta R.T. -0.00 min
 Lab File: VW008311.D
 Acq: 16 Jan 2019 16:29

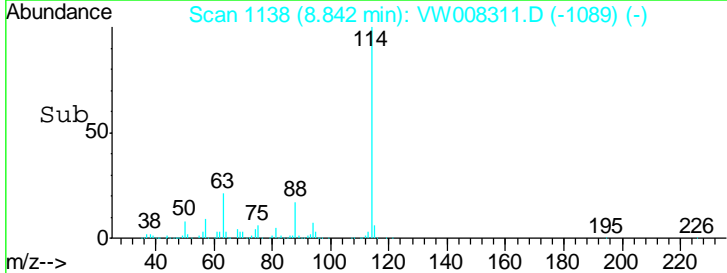
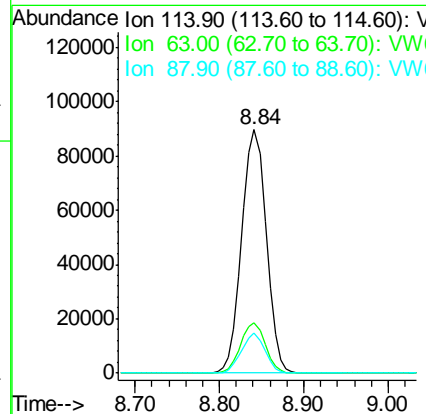
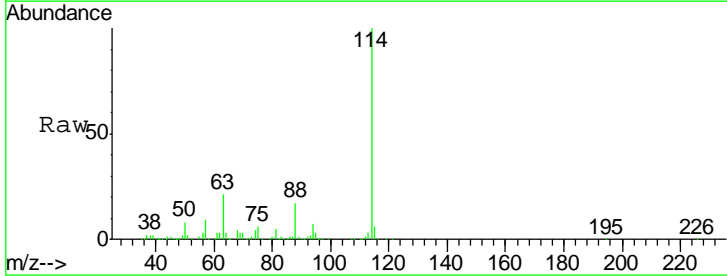
Instrument :
 MSVOA_W
 ClientSampled :
 EO-01-011519-B

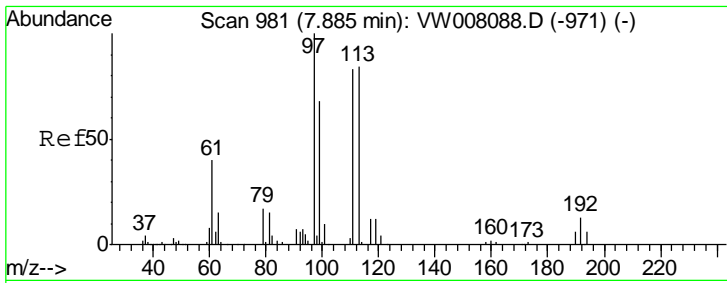
Tgt Ion	Resp	Lower	Upper
65	57724		
65	100		
67	53.3	0.0	106.8



#34
 1,4-Difluorobenzene
 Concen: 50.000 ug/l
 RT: 8.84 min Scan# 1138
 Delta R.T. -0.00 min
 Lab File: VW008311.D
 Acq: 16 Jan 2019 16:29

Tgt Ion	Resp	Lower	Upper
114	176250		
114	100		
63	20.6	0.0	43.4
88	16.6	0.0	33.4

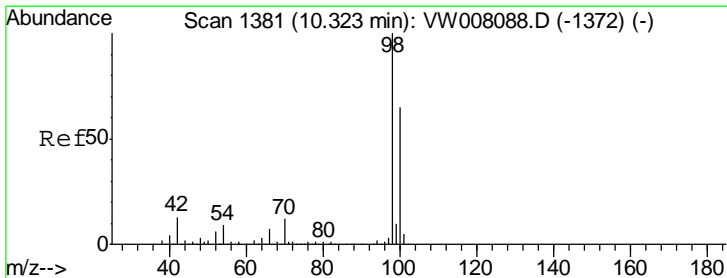
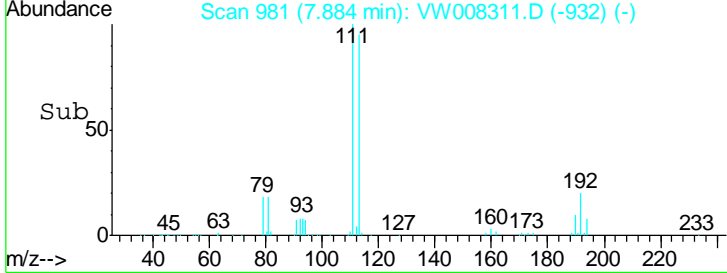
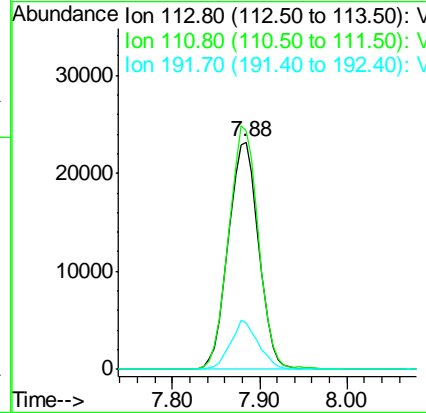
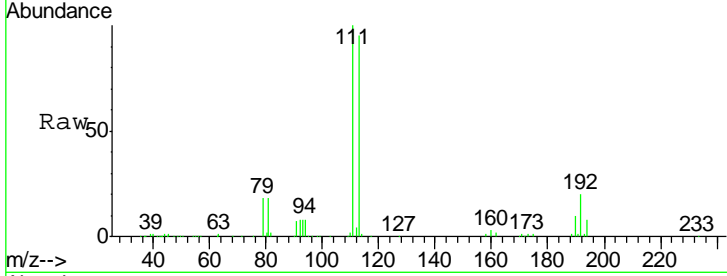




#35
 Dibromofluoromethane
 Concen: 54.654 ug/l
 RT: 7.88 min Scan# 981
 Delta R.T. -0.00 min
 Lab File: VW008311.D
 Acq: 16 Jan 2019 16:29

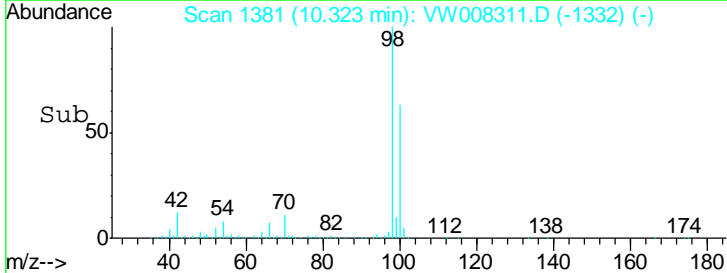
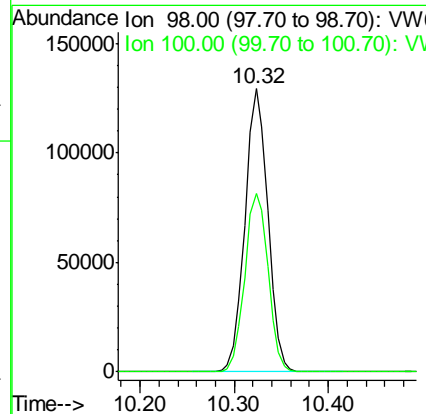
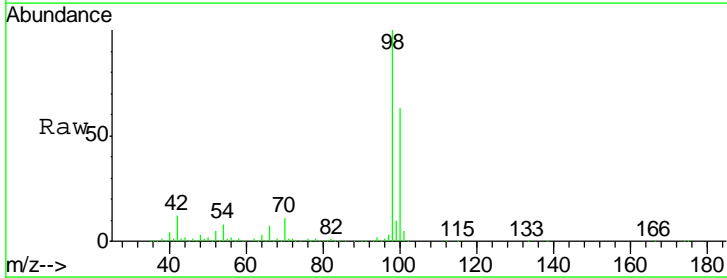
Instrument :
 MSVOA_W
 ClientSampled :
 EO-01-011519-B

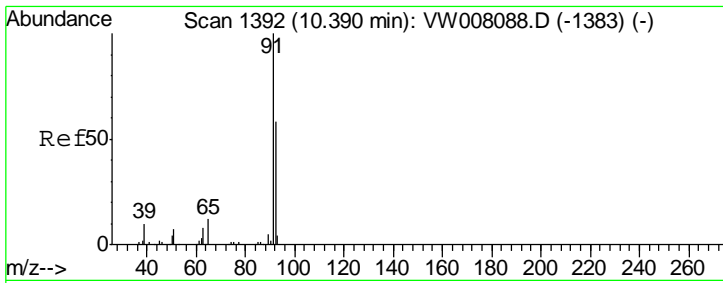
Tgt Ion	Resp	Lower	Upper
113	56182		
111	104.9	81.8	122.8
192	19.8	12.8	19.2#



#50
 Toluene-d8
 Concen: 50.883 ug/l
 RT: 10.32 min Scan# 1381
 Delta R.T. -0.00 min
 Lab File: VW008311.D
 Acq: 16 Jan 2019 16:29

Tgt Ion	Resp	Lower	Upper
98	219494		
100	64.3	51.7	77.5

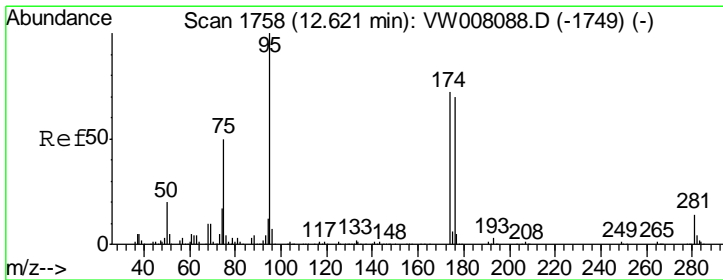
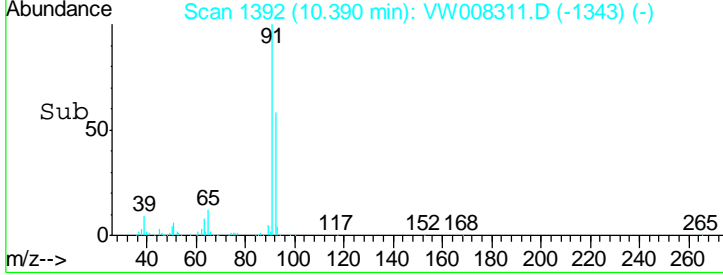
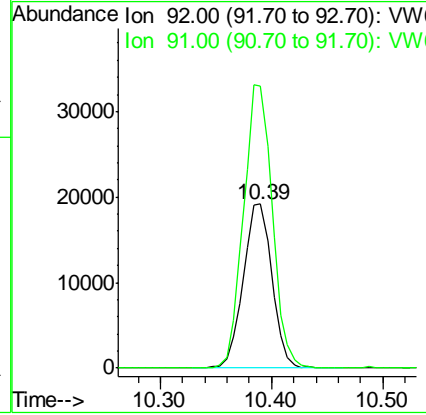
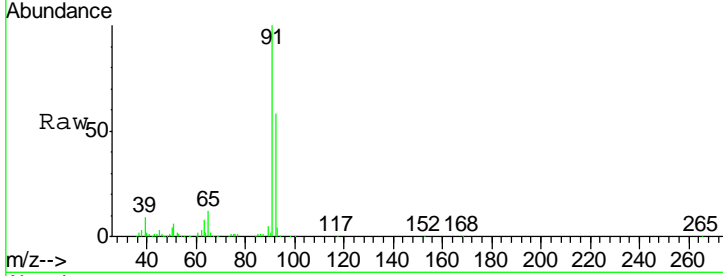




#52
 Toluene
 Concen: 10.940 ug/l
 RT: 10.39 min Scan# 1392
 Delta R.T. -0.00 min
 Lab File: VW008311.D
 Acq: 16 Jan 2019 16:29

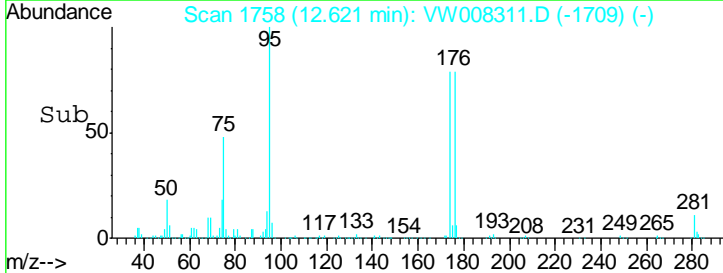
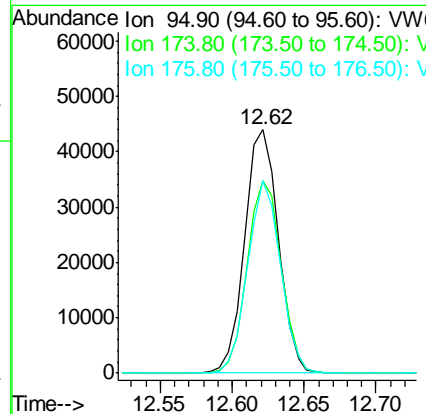
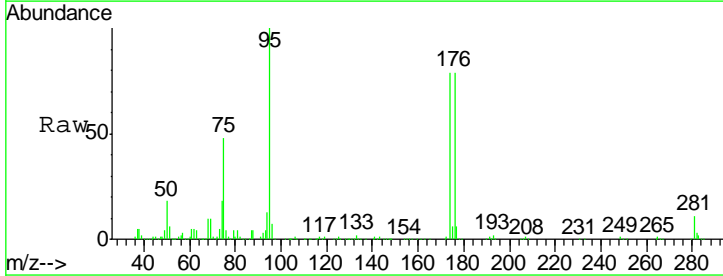
Instrument : MSVOA_W
 ClientSampled : EO-01-011519-B

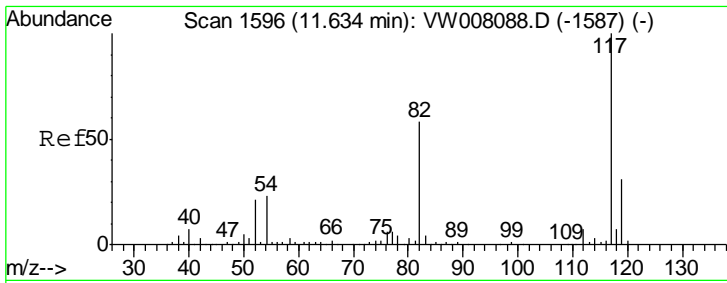
Tgt Ion	Resp	Lower	Upper
92	34404		
92	100		
91	173.1	137.0	205.4



#62
 4-Bromofluorobenzene
 Concen: 45.833 ug/l
 RT: 12.62 min Scan# 1758
 Delta R.T. -0.00 min
 Lab File: VW008311.D
 Acq: 16 Jan 2019 16:29

Tgt Ion	Resp	Lower	Upper
95	70879		
95	100		
174	80.1	0.0	143.0
176	77.3	0.0	140.2



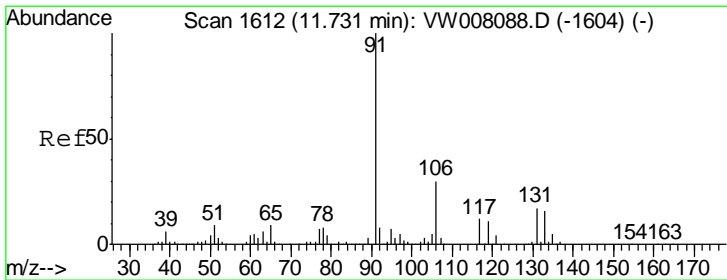
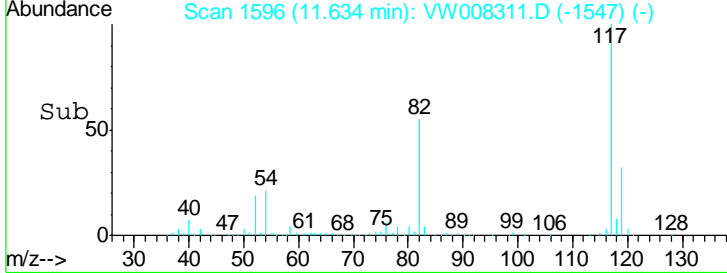
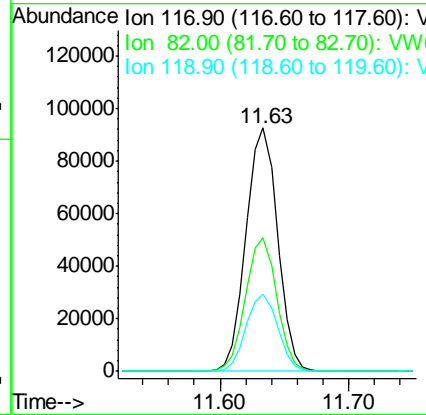
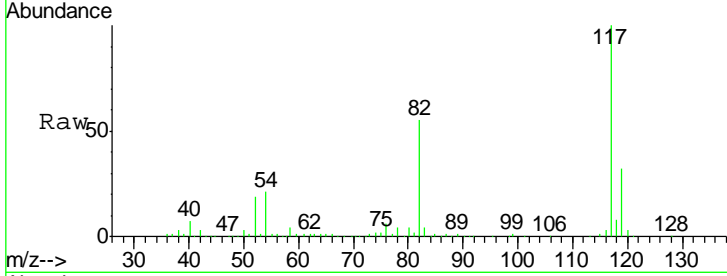


#63
 Chlorobenzene-d5
 Concen: 50.000 ug/l
 RT: 11.63 min Scan# 1596
 Delta R.T. -0.00 min
 Lab File: VW008311.D
 Acq: 16 Jan 2019 16:29

Instrument :
 MSVOA_W
 ClientSampled :
 EO-01-011519-B

Tgt Ion: 117 Resp: 156737

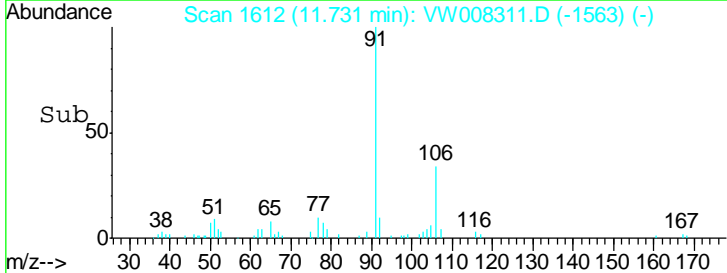
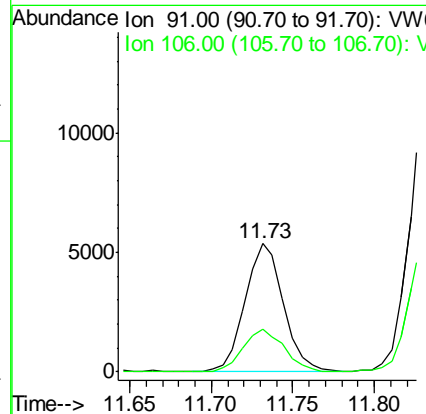
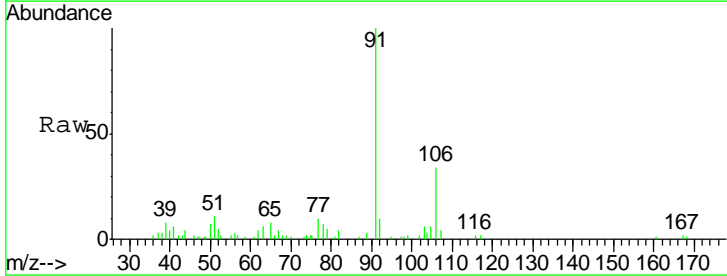
Ion	Ratio	Lower	Upper
117	100		
82	54.6	46.4	69.6
119	31.9	24.7	37.1

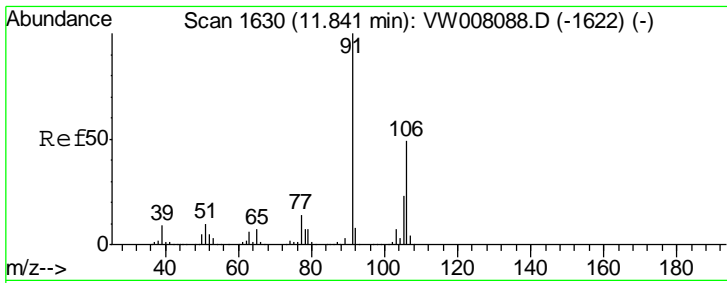


#67
 Ethyl Benzene
 Concen: 1.443 ug/l
 RT: 11.73 min Scan# 1612
 Delta R.T. -0.00 min
 Lab File: VW008311.D
 Acq: 16 Jan 2019 16:29

Tgt Ion: 91 Resp: 8768

Ion	Ratio	Lower	Upper
91	100		
106	33.5	24.2	36.4

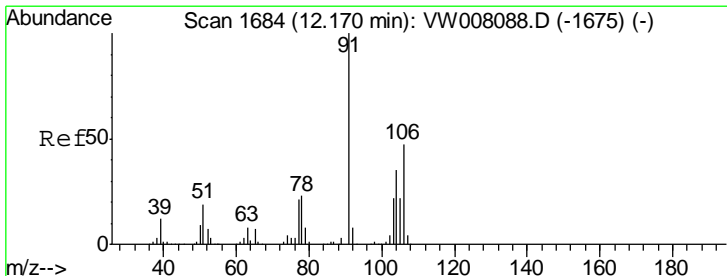
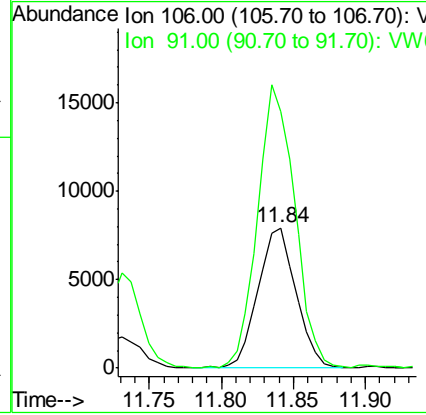
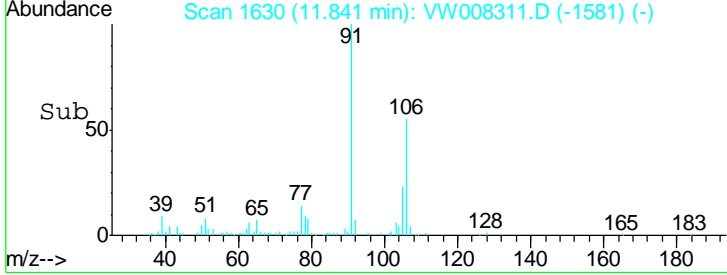
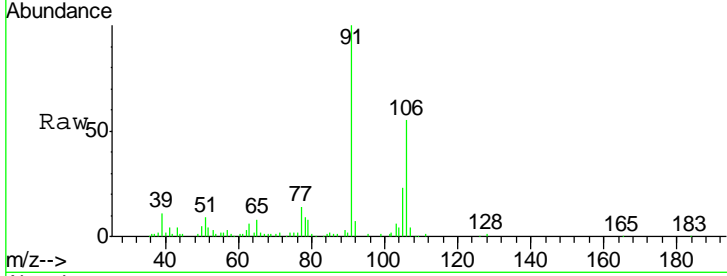




#68
 m/p-Xylenes
 Concen: 6.252 ug/l
 RT: 11.84 min Scan# 1630
 Delta R.T. -0.00 min
 Lab File: VW008311.D
 Acq: 16 Jan 2019 16:29

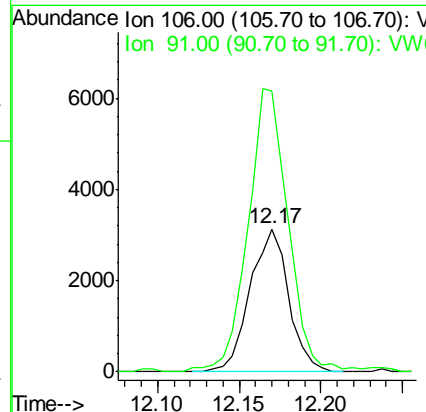
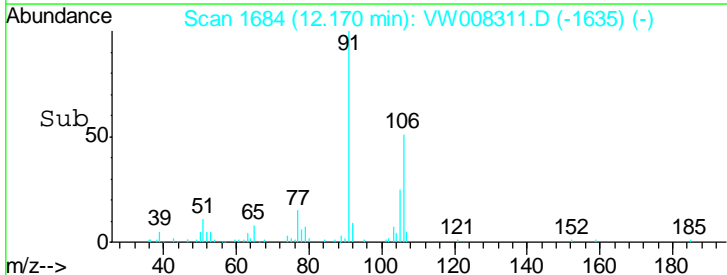
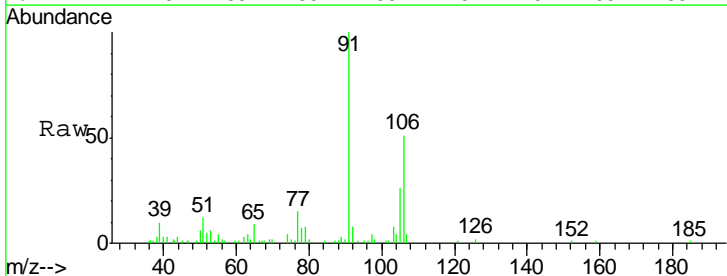
Instrument : MSVOA_W
 ClientSampled : EO-01-011519-B

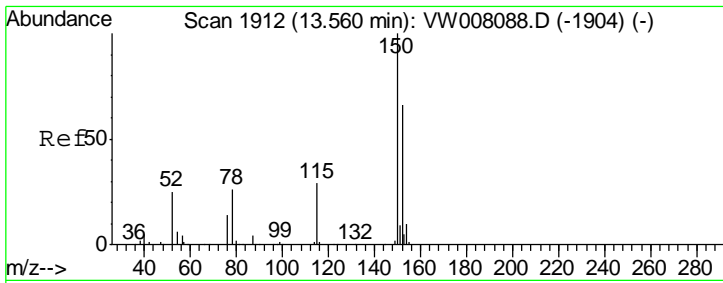
Tgt Ion:106 Resp: 14498
 Ion Ratio Lower Upper
 106 100
 91 197.5 162.4 243.6



#69
 o-Xylene
 Concen: 2.394 ug/l
 RT: 12.17 min Scan# 1684
 Delta R.T. -0.00 min
 Lab File: VW008311.D
 Acq: 16 Jan 2019 16:29

Tgt Ion:106 Resp: 5142
 Ion Ratio Lower Upper
 106 100
 91 206.4 107.8 323.6

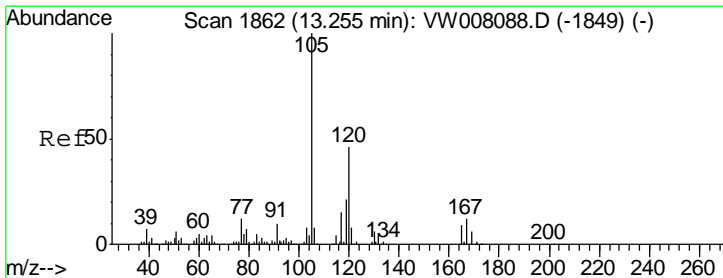
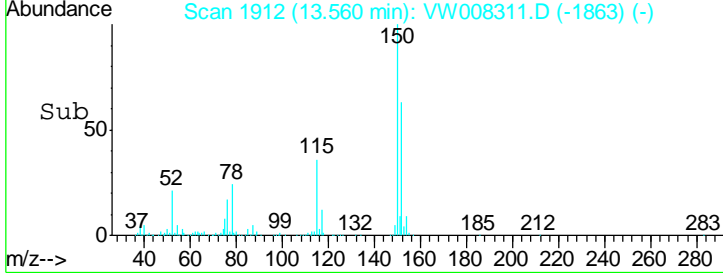
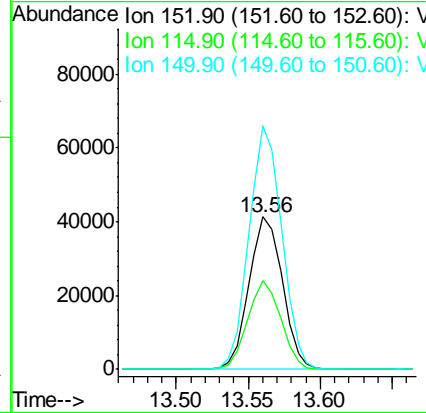
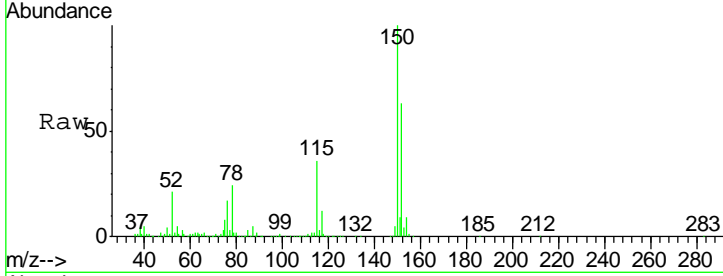




#72
 1,4-Dichlorobenzene-d4
 Concen: 50.000 ug/l
 RT: 13.56 min Scan# 1912
 Delta R.T. -0.00 min
 Lab File: VW008311.D
 Acq: 16 Jan 2019 16:29

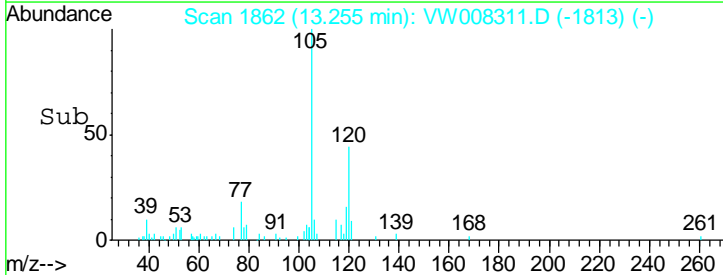
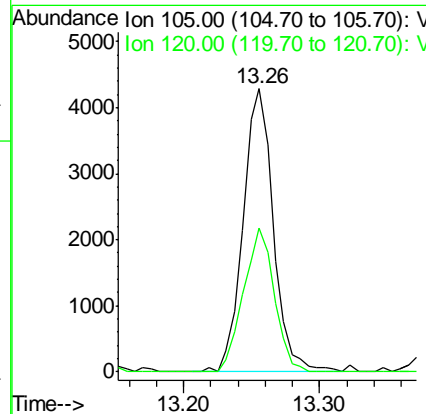
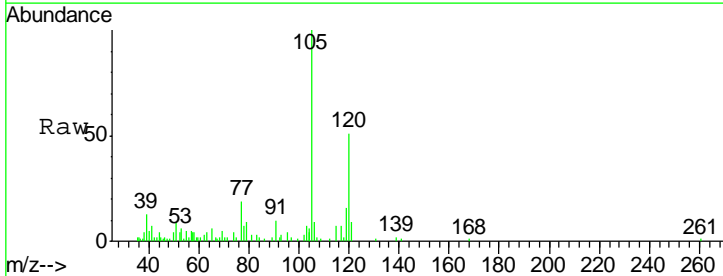
Instrument : MSVOA_W
 ClientSampled : EO-01-011519-B

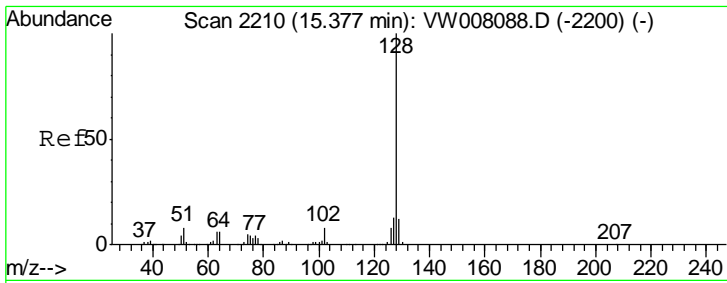
Tgt Ion	Resp	Lower	Upper
152	100		
115	58.0	30.8	92.4
150	156.3	0.0	350.2



#84
 1,2,4-Trimethylbenzene
 Concen: 1.501 ug/l
 RT: 13.26 min Scan# 1862
 Delta R.T. -0.00 min
 Lab File: VW008311.D
 Acq: 16 Jan 2019 16:29

Tgt Ion	Resp	Lower	Upper
105	100		
120	51.9	22.7	68.1





#95
 Naphthalene
 Concen: 3.201 ug/l
 RT: 15.37 min Scan# 2209
 Delta R.T. -0.01 min
 Lab File: VW008311.D
 Acq: 16 Jan 2019 16:29

Instrument : MSVOA_W
 ClientSampled : EO-01-011519-B

Tot Ion	128	127	129
Resp:	7801		
Ion Ratio	100	14.0	15.4
Lower		11.0	9.0
Upper		16.4	13.6#

