

Data Path : Z:\VOASRV\HPCHEM1\MSVOA W\DATA\VW012420\  
 Data File : VW014749.D  
 Acq On : 24 Jan 2020 17:25  
 Operator : SY/VA  
 Sample : L1242-11  
 Misc : 5.00G/5ML/MSVOA W/SOIL  
 ALS Vial : 16 Sample Multiplier: 1

Instrument :  
 MSVOA\_W  
 ClientSampleId :  
 20200064-AMENDED-COMP-2

Integration Parameters: RTEINT.P

Integrator: RTE  
 Smoothing : ON  
 Sampling : 1  
 Start Thrs: 0.2  
 Stop Thrs : 0

Filtering: 5  
 Min Area: 3 % of largest Peak  
 Max Peaks: 100  
 Peak Location: TOP

If leading or trailing edge < 100 prefer < Baseline drop else tangent >  
 Peak separation: 5

Method : Z:\VOASRV\HPCHEM1\MSVOA\_W\METHOD\82W012420S.M  
 Title : SW846 8260

Signal : TIC

peak #	R.T. min	first scan	max scan	last scan	PK TY	peak height	corr. area	corr. % max.	% of total
1	2.489	91	96	105	rBV	45291	92527	3.25%	0.533%
2	2.678	123	127	140	rVB	56286	124762	4.39%	0.718%
3	4.123	356	364	368	rBV	57647	147901	5.20%	0.851%
4	4.196	368	376	397	rVV	584806	1709364	60.13%	9.838%
5	4.379	398	406	423	rVB2	93304	301247	10.60%	1.734%
6	4.909	480	493	504	rBV2	13817	54819	1.93%	0.315%
7	7.135	847	858	875	rBV2	82372	275348	9.69%	1.585%
8	7.878	970	980	984	rBV	94885	226219	7.96%	1.302%
9	7.945	984	991	1002	rVB	717421	1610037	56.64%	9.266%
10	8.299	1031	1049	1060	rBV2	377065	1009565	35.51%	5.810%
11	8.842	1129	1138	1154	rBV	1064800	2146126	75.49%	12.351%
12	9.025	1161	1168	1187	rBV	63112	149053	5.24%	0.858%
13	10.323	1373	1381	1388	rBV	1602947	2842817	100.00%	16.361%
14	10.701	1437	1443	1450	rBV	24546	40798	1.44%	0.235%
15	11.067	1496	1503	1515	rVB3	43881	90586	3.19%	0.521%
16	11.433	1553	1563	1575	rBV2	26244	56692	1.99%	0.326%
17	11.628	1587	1595	1605	rBV	1390415	2324507	81.77%	13.378%
18	12.335	1707	1711	1722	rBV	12420	30182	1.06%	0.174%
19	12.615	1747	1757	1764	rBV	1033640	1714167	60.30%	9.865%
20	12.932	1805	1809	1822	rVB8	22565	70666	2.49%	0.407%
21	13.292	1865	1868	1878	rVB8	27160	54855	1.93%	0.316%
22	13.408	1879	1887	1892	rBV2	31835	66096	2.33%	0.380%
23	13.554	1905	1911	1922	rBV	1191564	1913518	67.31%	11.013%
24	13.646	1922	1926	1932	rVB2	41149	59822	2.10%	0.344%
25	14.066	1990	1995	2010	rVB2	71088	160912	5.66%	0.926%
26	15.432	2215	2219	2225	rVB	62834	103278	3.63%	0.594%

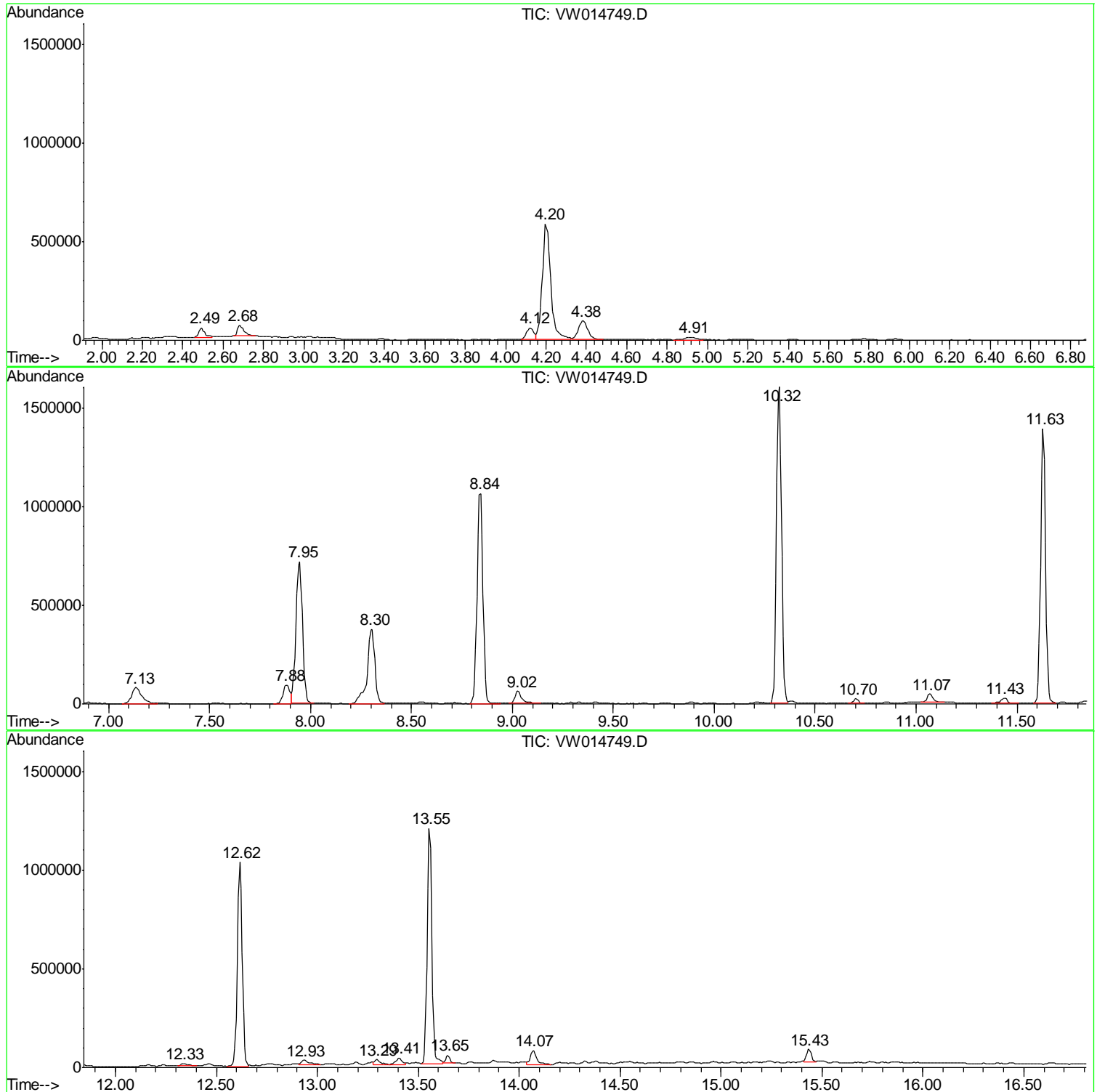
Sum of corrected areas: 17375864

Data Path : Z:\VOASRV\HPCHEM1\MSVOA W\DATA\VW012420\  
Data File : VW014749.D  
Acq On : 24 Jan 2020 17:25  
Operator : SY/VA  
Sample : L1242-11  
Misc : 5.00G/5ML/MSVOA W/SOIL  
ALS Vial : 16 Sample Multiplier: 1

Instrument :  
MSVOA\_W  
ClientSampleId :  
20200064-AMENDED-COMP-2

Quant Method : Z:\VOASRV\HPCHEM1\MSVOA\_W\METHOD\82W012420S.M  
Quant Title : SW846 8260

TIC Library : C:\DATABASE\NIST11.L  
TIC Integration Parameters: LSCINT.P



Data Path : Z:\VOASRV\HPCHEM1\MSVOA W\DATA\VW012420\  
 Data File : VW014749.D  
 Acq On : 24 Jan 2020 17:25  
 Operator : SY/VA  
 Sample : L1242-11  
 Misc : 5.00G/5ML/MSVOA W/SOIL  
 ALS Vial : 16 Sample Multiplier: 1

Instrument :  
 MSVOA\_W  
 ClientSampled :  
 20200064-AMENDED-COMP-2

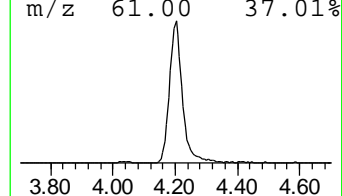
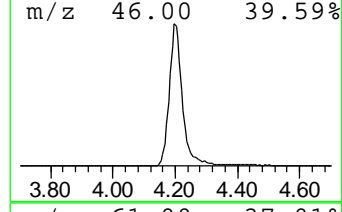
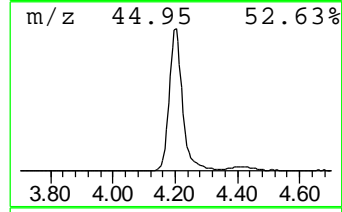
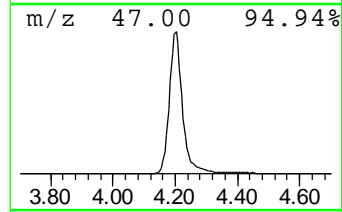
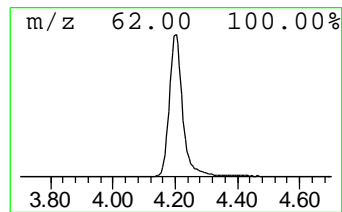
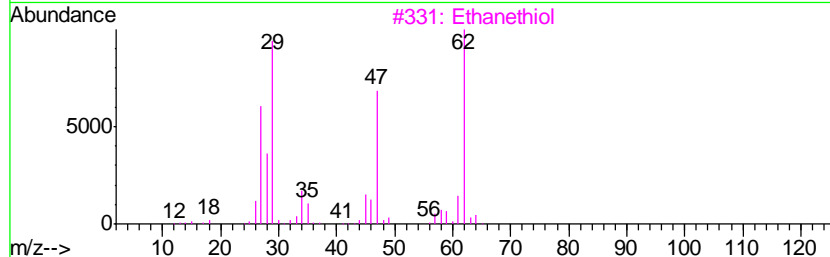
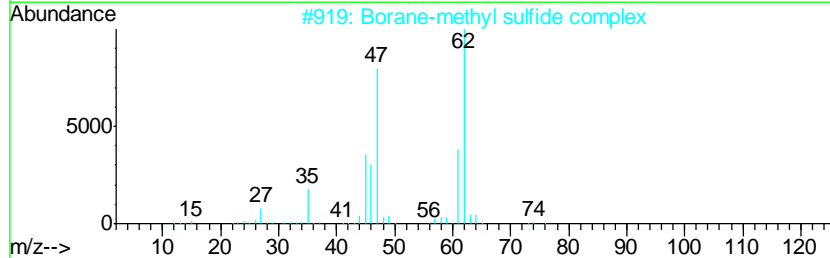
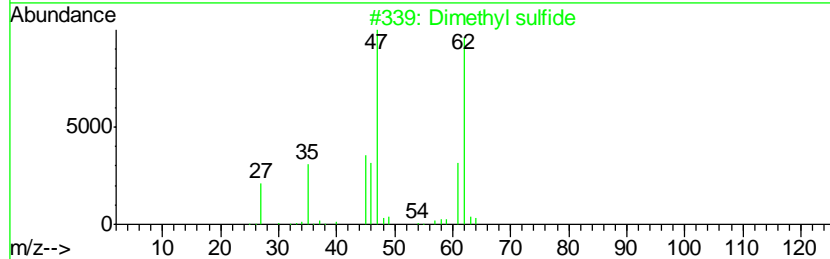
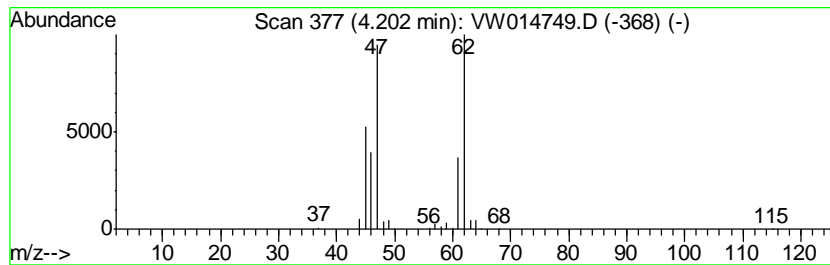
Quant Method : Z:\VOASRV\HPCHEM1\MSVOA\_W\METHOD\82W012420S.M  
 Quant Title : SW846 8260

TIC Library : C:\DATABASE\NIST11.L  
 TIC Integration Parameters: LSCINT.P

\*\*\*\*\*  
 Peak Number 1 Dimethyl sulfide Concentration Rank 1

R.T.	EstConc	Area	Relative to ISTD	R.T.
4.20	53.08 ug/l	1709360	Pentafluorobenzene	7.95

Hit#	of	Tentative ID	MW	MolForm	CAS#	Qual
1	5	Dimethyl sulfide	62	C2H6S	000075-18-3	95
2		Borane-methyl sulfide complex	76	C2H9BS	013292-87-0	90
3		Ethanethiol	62	C2H6S	000075-08-1	59
4		Ethene, chloro-	62	C2H3Cl	000075-01-4	9
5		Boric acid	62	BH3O3	010043-35-3	5



Data Path : Z:\VOASRV\HPCHEM1\MSVOA\_W\DATA\VW012420\  
Data File : VW014749.D  
Acq On : 24 Jan 2020 17:25  
Operator : SY/VA  
Sample : L1242-11  
Misc : 5.00G/5ML/MSVOA\_W/SOIL  
ALS Vial : 16 Sample Multiplier: 1

Instrument :  
MSVOA\_W  
ClientSampleId :  
20200064-AMENDED-COMP-2

Quant Method : Z:\VOASRV\HPCHEM1\MSVOA\_W\METHOD\82W012420S.M  
Quant Title : SW846 8260

TIC Library : C:\DATABASE\NIST11.L  
TIC Integration Parameters: LSCINT.P

TIC Top Hit name	RT	EstConc	Units	Response	--Internal Standard--			
					#	RT	Resp	Conc
Dimethyl sulfide	4.20	53.1	ug/l	1709360	1	7.95	1610040	50.0