

Data Path : Z:\VOASRV\HPCHEM1\MSVOA_W\DATA\VW012819\
 Data File : VW008439.D
 Acq On : 28 Jan 2019 15:01
 Operator : SY/VA
 Sample : K1011-11RE
 Misc : 6.96G/5ML/MSVOA_W/SOIL
 ALS Vial : 11 Sample Multiplier: 1

Instrument :
 MSVOA_W
 ClientSampleId :
 OR-01-012519-BRE

Quant Time: Jan 29 04:14:56 2019
 Quant Method : Z:\VOASRV\HPCHEM1\MSVOA_W\METHOD\82W012419S.M
 Quant Title : SW846 8260
 QLast Update : Fri Jan 25 11:07:41 2019
 Response via : Initial Calibration

Internal Standards	R.T.	QIon	Response	Conc	Units	Dev(Min)
1) Pentafluorobenzene	7.95	168	425003	50.00	ug/l	0.00
34) 1,4-Difluorobenzene	8.84	114	682341	50.00	ug/l	0.00
63) Chlorobenzene-d5	11.63	117	575161	50.00	ug/l	0.00
72) 1,4-Dichlorobenzene-d4	13.56	152	219846	50.00	ug/l	0.00

System Monitoring Compounds

33) 1,2-Dichloroethane-d4	8.31	65	219655	52.61	ug/l	0.00
Spiked Amount	50.000		Recovery	=	105.22%	
35) Dibromofluoromethane	7.88	113	214324	53.72	ug/l	0.00
Spiked Amount	50.000		Recovery	=	107.44%	
50) Toluene-d8	10.32	98	792828	49.55	ug/l	0.00
Spiked Amount	50.000		Recovery	=	99.10%	
62) 4-Bromofluorobenzene	12.62	95	256719	41.74	ug/l	0.00
Spiked Amount	50.000		Recovery	=	83.48%	

Target Compounds

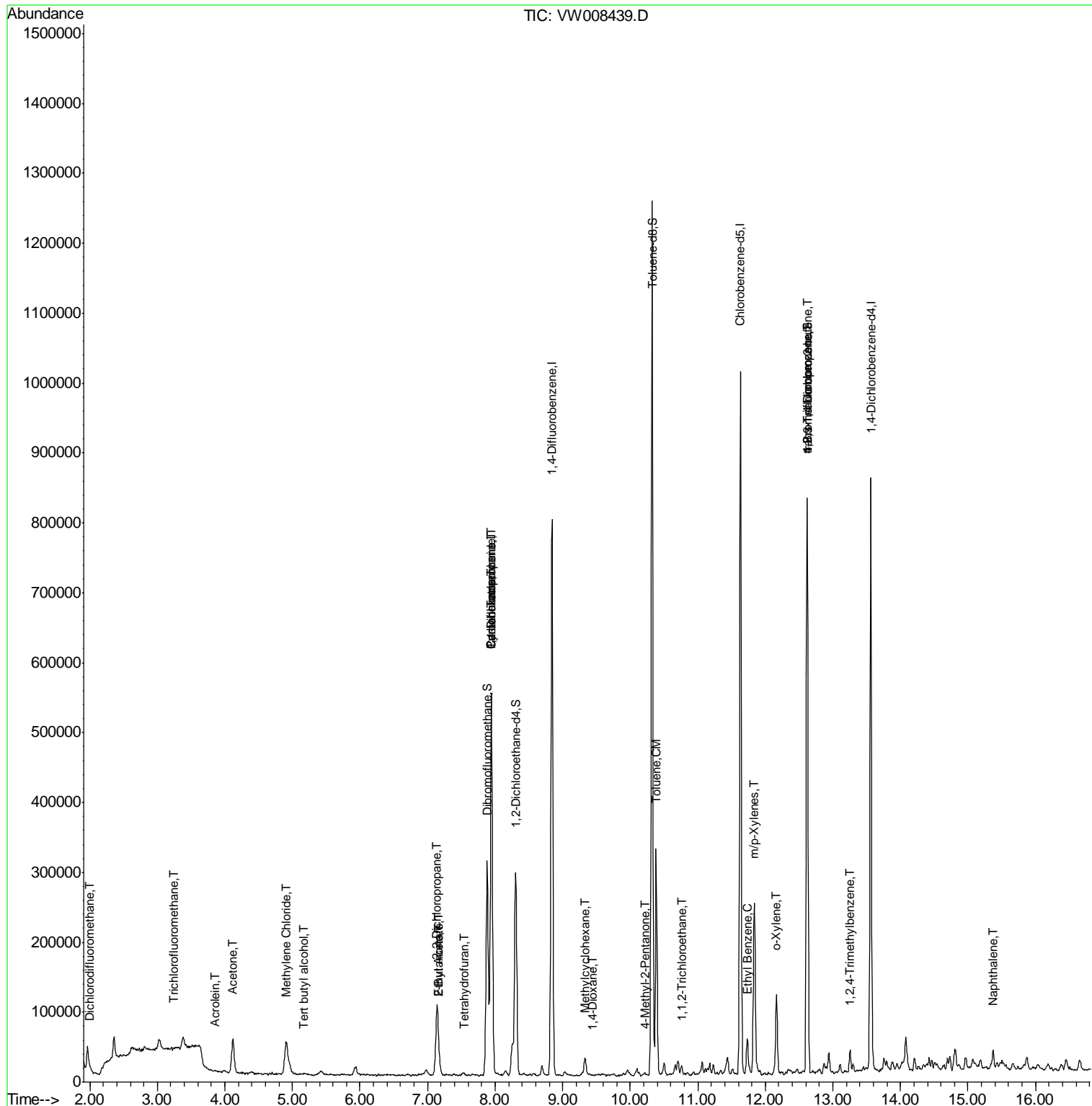
						Qvalue
2) Dichlorodifluoromethane	2.01	85	376	3.396	ug/l #	41
7) Trichlorofluoromethane	3.24	101	138	4.757	ug/l #	2
11) Tert butyl alcohol	5.17	59	1192	3.546	ug/l	95
13) Acrolein	3.87	56	644	6.320	ug/l #	36
16) Acetone	4.12	43	83090	88.618	ug/l	99
20) Methylene Chloride	4.90	84	38635	8.940	ug/l	94
25) 2-Butanone	7.17	43	18447	14.165	ug/l	96
26) 2,2-Dichloropropane	7.14	77	7487	1.398	ug/l #	53
29) Tetrahydrofuran	7.54	42	2406	2.915	ug/l #	81
31) Cyclohexane	7.95	56	13956	1.703	ug/l #	24
36) 1,1-Dichloropropene	7.95	75	29683	4.605	ug/l #	51
37) Ethyl Acetate	7.17	43	18447	6.469	ug/l #	70
38) Carbon Tetrachloride	7.95	117	39566	6.100	ug/l #	17
39) Methylcyclohexane	9.34	83	10145	1.198	ug/l	90
49) 1,4-Dioxane	9.44	88	68	1.754	ug/l #	23
51) 4-Methyl-2-Pentanone	10.21	43	2986	1.020	ug/l	97
52) Toluene	10.39	92	143062	12.117	ug/l	97
55) 1,1,2-Trichloroethane	10.76	97	5235	1.645	ug/l #	22
67) Ethyl Benzene	11.73	91	33267	1.541	ug/l #	87
68) m/p-Xylenes	11.84	106	74439	8.890	ug/l	97
69) o-Xylene	12.16	106	29618	3.723	ug/l	97
76) 1,2,3-Trichloropropane	12.62	75	128865	67.419	ug/l #	1
81) trans-1,4-Dichloro-2-buten	12.62	75	128865	133.158	ug/l #	12
84) 1,2,4-Trimethylbenzene	13.26	105	16863	1.211	ug/l	99
95) Naphthalene	15.37	128	22030	2.749	ug/l #	93

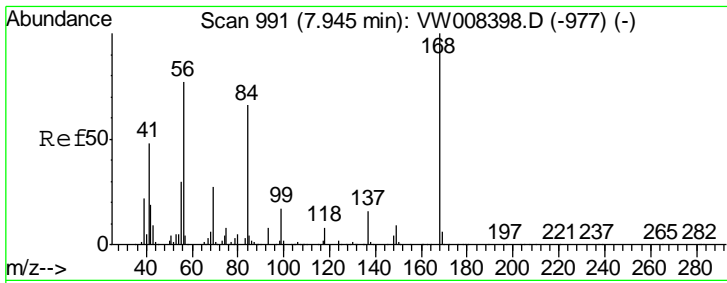
(#) = qualifier out of range (m) = manual integration (+) = signals summed

Data Path : Z:\VOASRV\HPCHEM1\MSVOA_W\DATA\VW012819\
 Data File : VW008439.D
 Acq On : 28 Jan 2019 15:01
 Operator : SY/VA
 Sample : K1011-11RE
 Misc : 6.96G/5ML/MSVOA_W/SOIL
 ALS Vial : 11 Sample Multiplier: 1

Instrument :
 MSVOA_W
 Client Sampled :
 OR-01-012519-BRE

Quant Time: Jan 29 04:14:56 2019
 Quant Method : Z:\VOASRV\HPCHEM1\MSVOA_W\METHOD\82W012419S.M
 Quant Title : SW846 8260
 QLast Update : Fri Jan 25 11:07:41 2019
 Response via : Initial Calibration

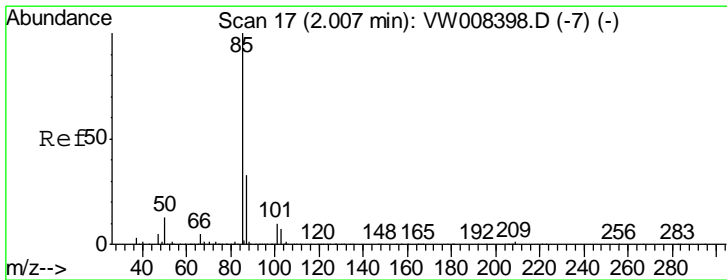
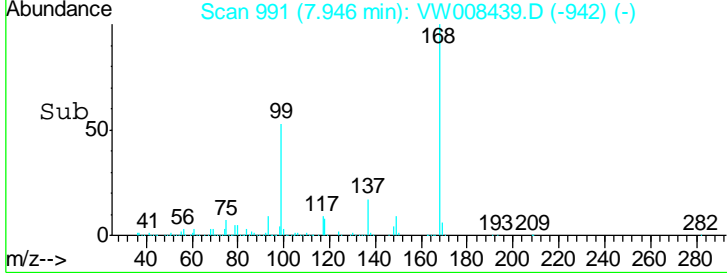
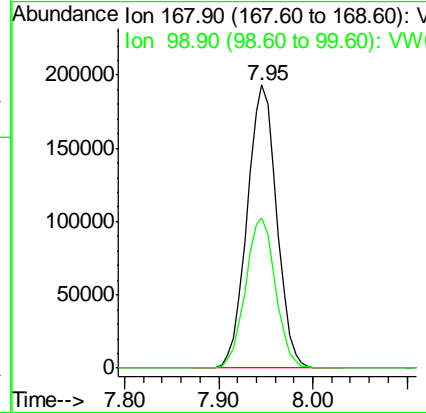
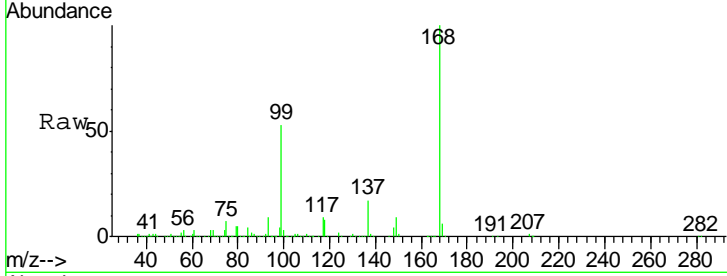




#1
 Pentafluorobenzene
 Concen: 50.000 ug/l
 RT: 7.95 min Scan# 991
 Delta R.T. 0.00 min
 Lab File: VW008439.D
 Acq: 28 Jan 2019 15:01

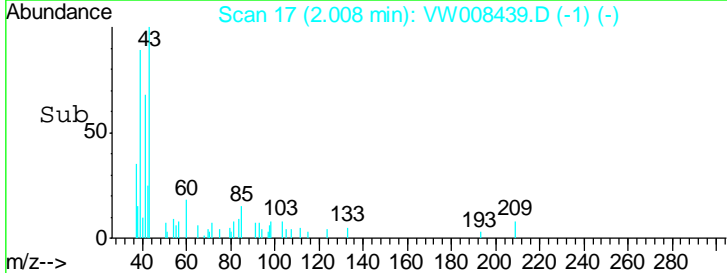
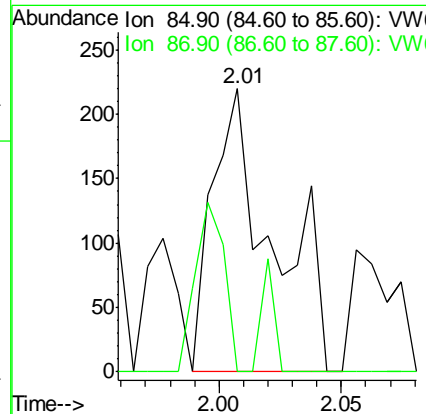
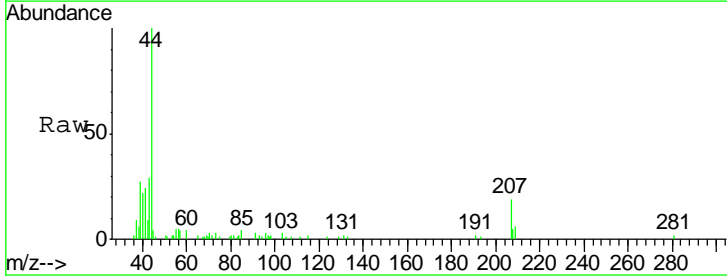
Instrument : MSVOA_W
 ClientSampled : OR-01-012519-BRE

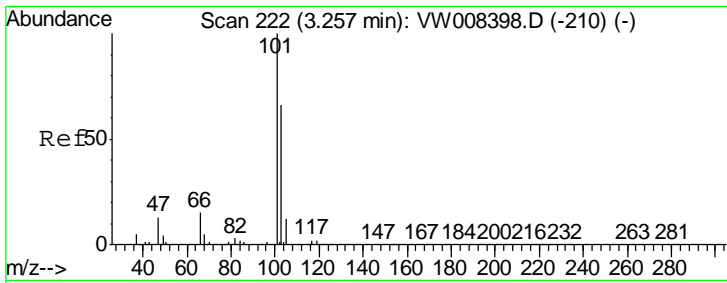
Tgt Ion: 168 Resp: 425003
 Ion Ratio Lower Upper
 168 100
 99 53.3 45.5 68.3



#2
 Dichlorodifluoromethane
 Concen: 3.396 ug/l
 RT: 2.01 min Scan# 17
 Delta R.T. 0.00 min
 Lab File: VW008439.D
 Acq: 28 Jan 2019 15:01

Tgt Ion: 85 Resp: 376
 Ion Ratio Lower Upper
 85 100
 87 0.0 16.7 50.1#

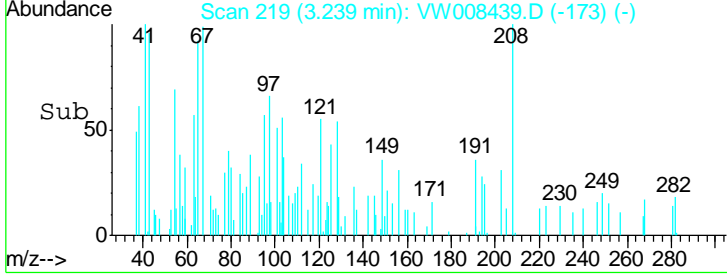
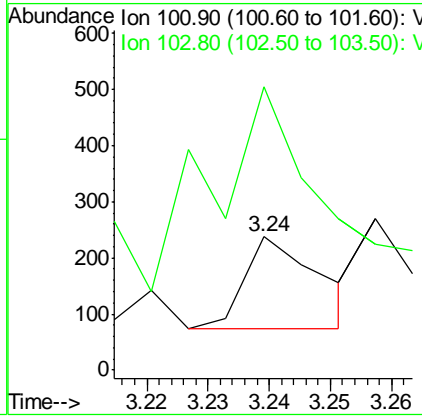
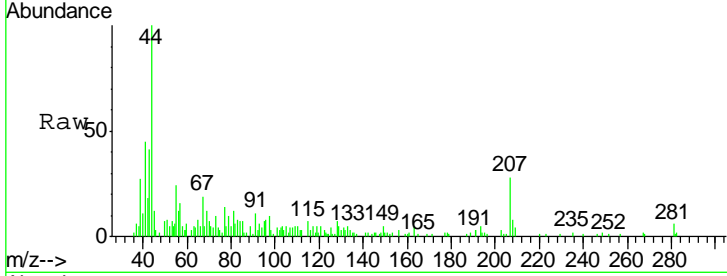




#7
 Trichlorofluoromethane
 Concen: 4.757 ug/l
 RT: 3.24 min Scan# 219
 Delta R.T. -0.02 min
 Lab File: VW008439.D
 Acq: 28 Jan 2019 15:01

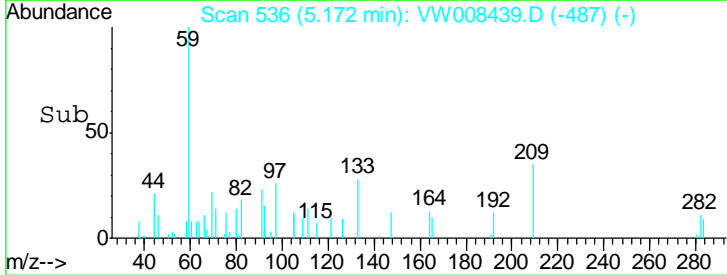
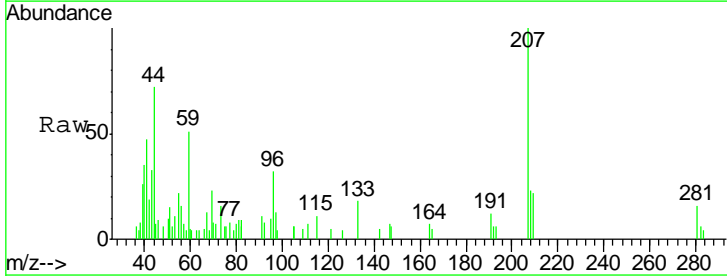
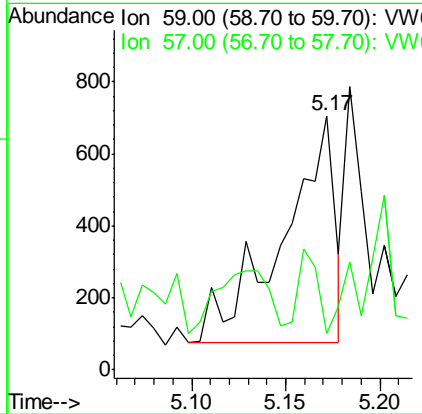
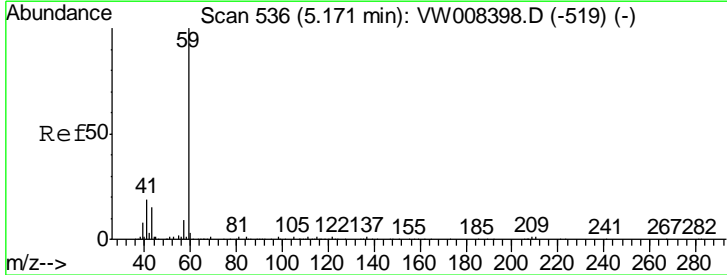
Instrument :
 MSVOA_W
ClientSampled :
 OR-01-012519-BRE

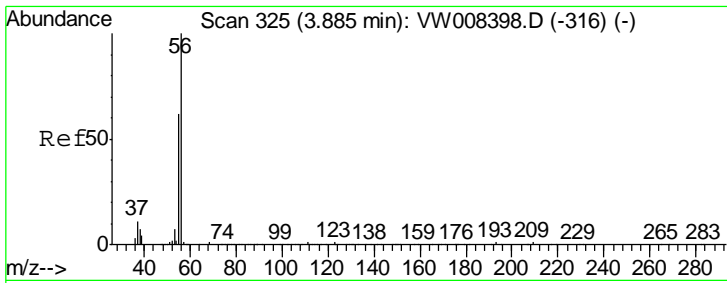
Tgt Ion: 101 Resp: 138
 Ion Ratio Lower Upper
 101 100
 103 142.9 52.5 78.7#



#11
 Tert butyl alcohol
 Concen: 3.546 ug/l
 RT: 5.17 min Scan# 536
 Delta R.T. 0.00 min
 Lab File: VW008439.D
 Acq: 28 Jan 2019 15:01

Tgt Ion: 59 Resp: 1192
 Ion Ratio Lower Upper
 59 100
 57 13.7 9.3 13.9

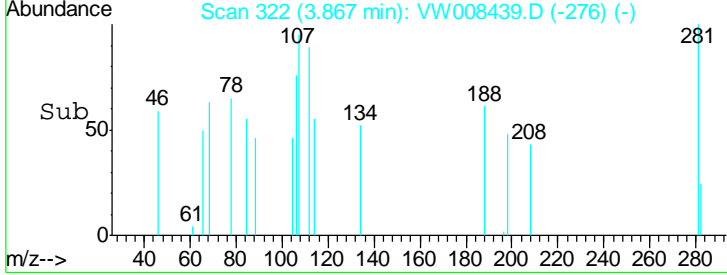
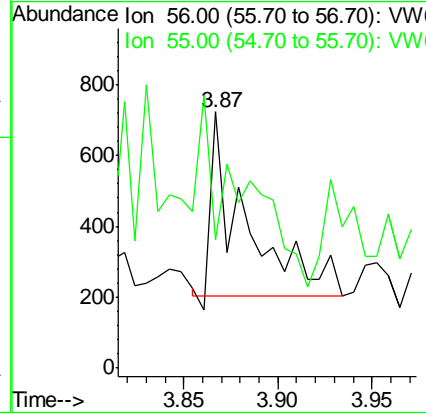
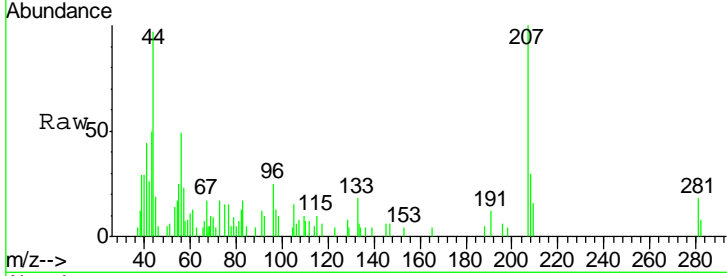




#13
 Acrolein
 Concen: 6.320 ug/l
 RT: 3.87 min Scan# 322
 Delta R.T. -0.02 min
 Lab File: VW008439.D
 Acq: 28 Jan 2019 15:01

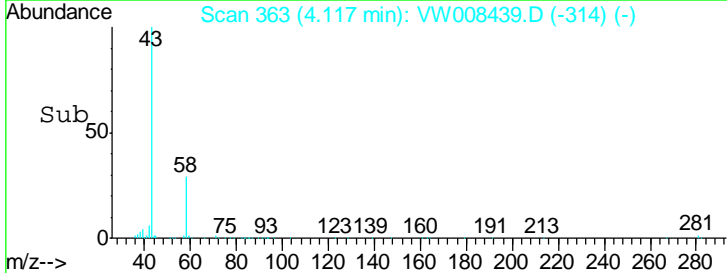
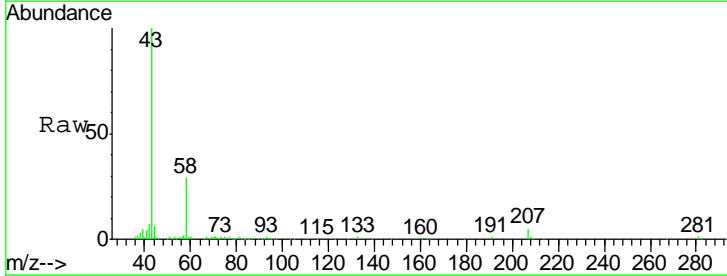
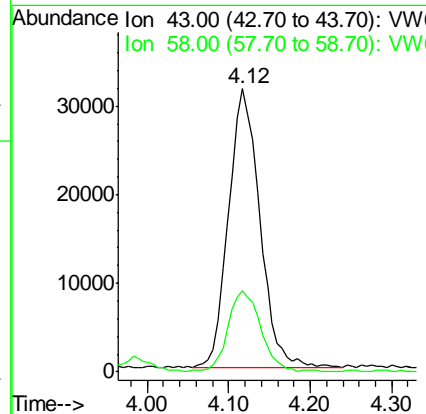
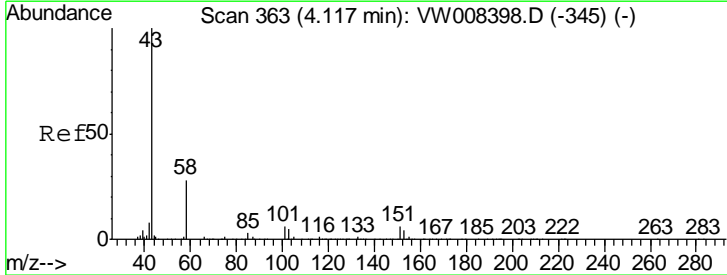
Instrument : MSVOA_W
 ClientSampled : OR-01-012519-BRE

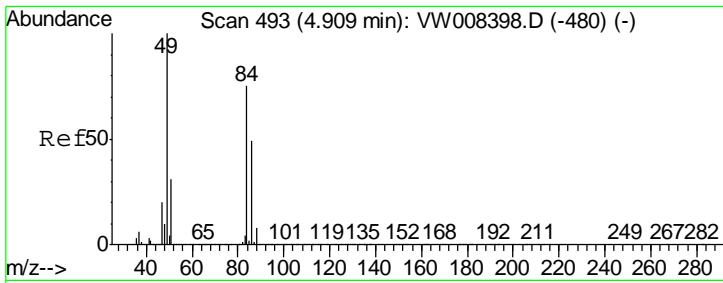
Tgt Ion: 56 Resp: 644
 Ion Ratio Lower Upper
 56 100
 55 17.9 56.7 85.1#



#16
 Acetone
 Concen: 88.618 ug/l
 RT: 4.12 min Scan# 363
 Delta R.T. 0.00 min
 Lab File: VW008439.D
 Acq: 28 Jan 2019 15:01

Tgt Ion: 43 Resp: 83090
 Ion Ratio Lower Upper
 43 100
 58 28.7 22.6 34.0

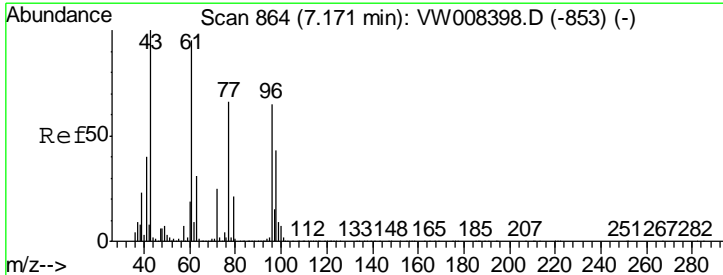
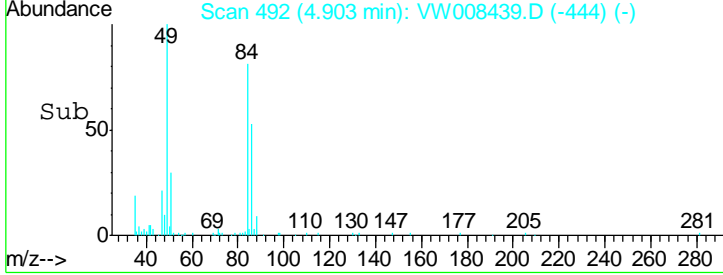
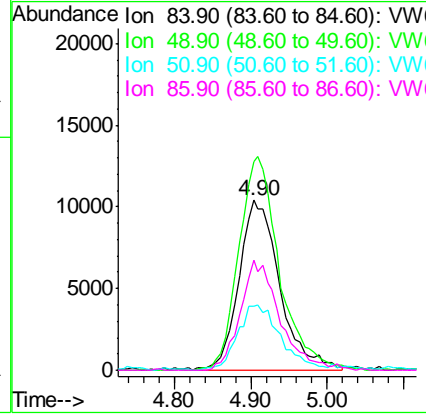
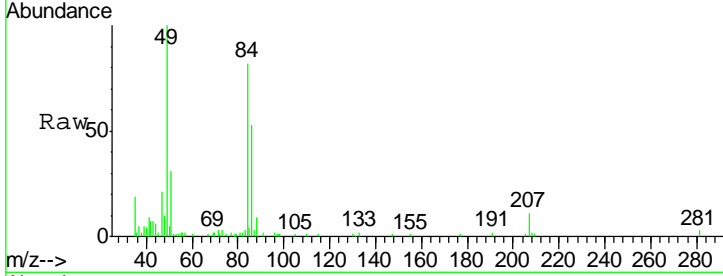




#20
 Methylene Chloride
 Concen: 8.940 ug/l
 RT: 4.90 min Scan# 492
 Delta R.T. -0.01 min
 Lab File: VW008439.D
 Acq: 28 Jan 2019 15:01

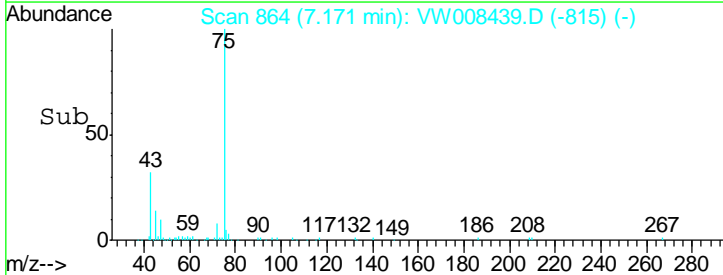
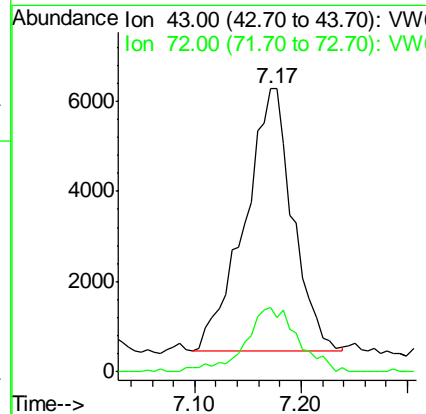
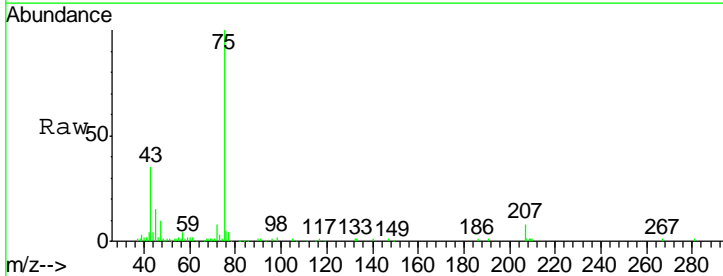
Instrument :
 MSVOA_W
ClientSampled :
 OR-01-012519-BRE

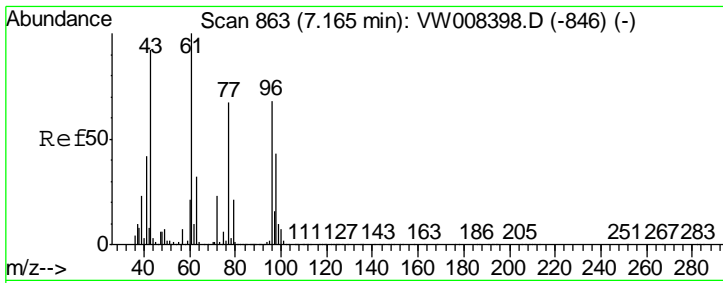
Tgt Ion	Resp	Lower	Upper
84	38635		
84	100		
49	122.3	106.8	160.2
51	37.8	32.9	49.3
86	65.0	52.2	78.2



#25
 2-Butanone
 Concen: 14.165 ug/l
 RT: 7.17 min Scan# 864
 Delta R.T. 0.00 min
 Lab File: VW008439.D
 Acq: 28 Jan 2019 15:01

Tgt Ion	Resp	Lower	Upper
43	18447		
43	100		
72	23.3	20.1	30.1

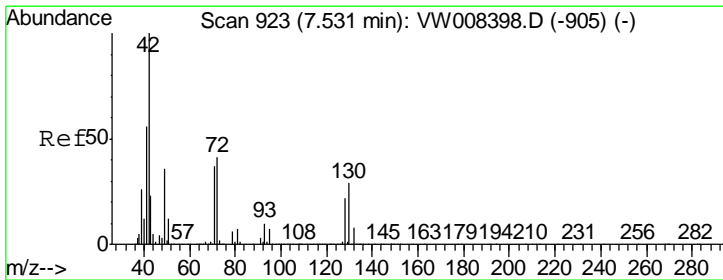
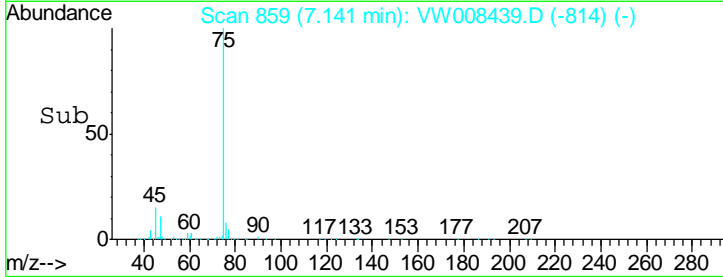
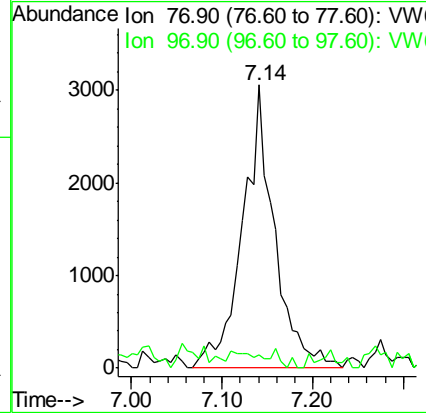
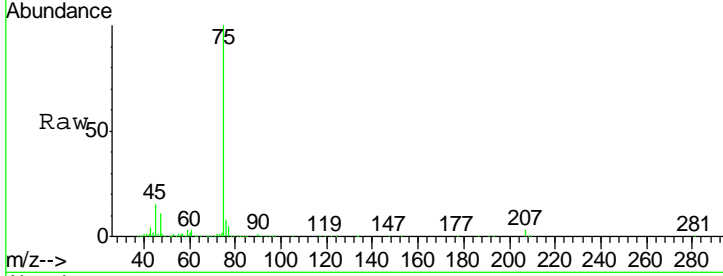




#26
 2,2-Dichloropropane
 Concen: 1.398 ug/l
 RT: 7.14 min Scan# 859
 Delta R.T. -0.02 min
 Lab File: VW008439.D
 Acq: 28 Jan 2019 15:01

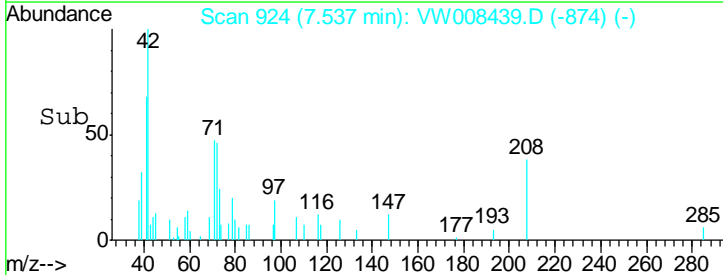
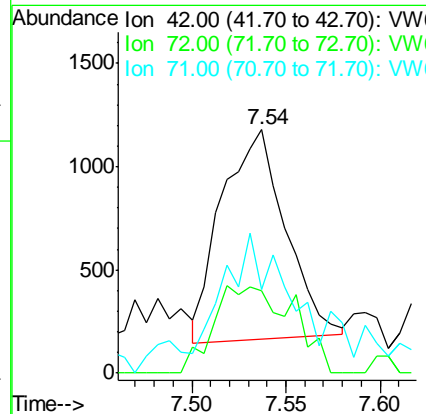
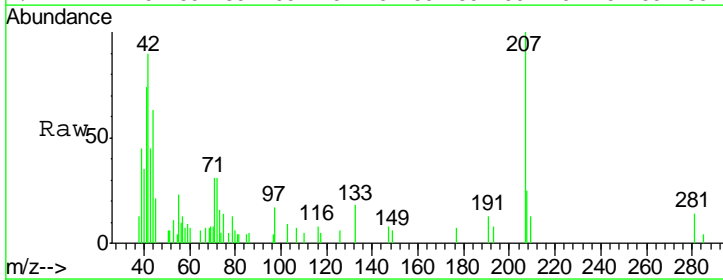
Instrument : MSVOA_W
 ClientSampled : OR-01-012519-BRE

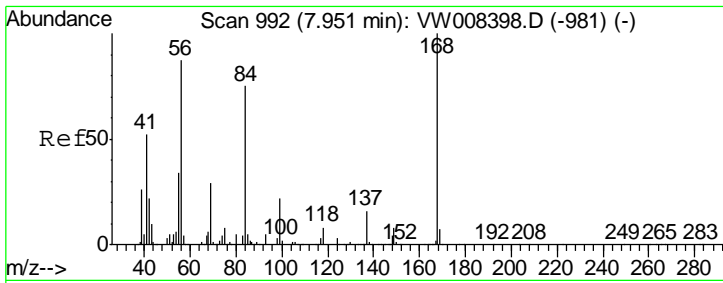
Tgt Ion: 77 Resp: 7487
 Ion Ratio Lower Upper
 77 100
 97 0.0 11.5 34.5#



#29
 Tetrahydrofuran
 Concen: 2.915 ug/l
 RT: 7.54 min Scan# 924
 Delta R.T. 0.01 min
 Lab File: VW008439.D
 Acq: 28 Jan 2019 15:01

Tgt Ion: 42 Resp: 2406
 Ion Ratio Lower Upper
 42 100
 72 50.9 31.9 47.9#
 71 50.1 29.9 44.9#

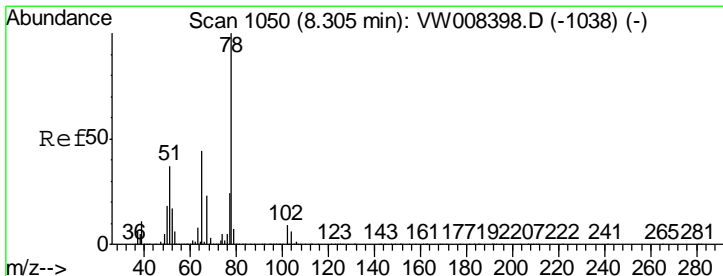
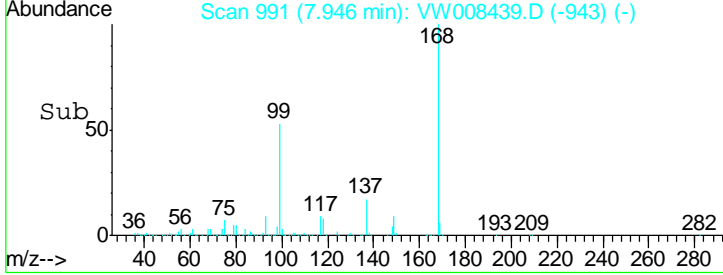
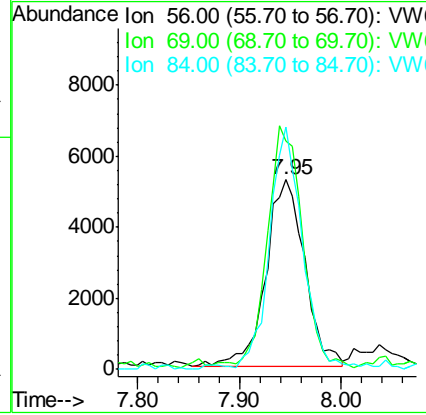
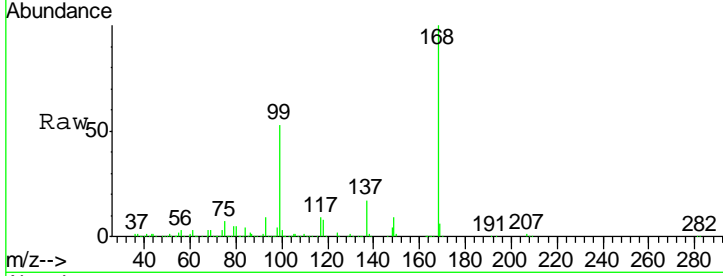




#31
 Cyclohexane
 Concen: 1.703 ug/l
 RT: 7.95 min Scan# 991
 Delta R.T. -0.01 min
 Lab File: VW008439.D
 Acq: 28 Jan 2019 15:01

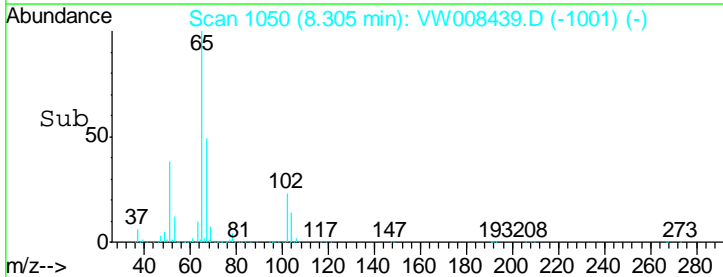
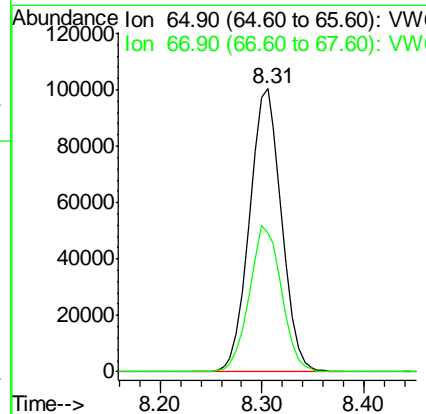
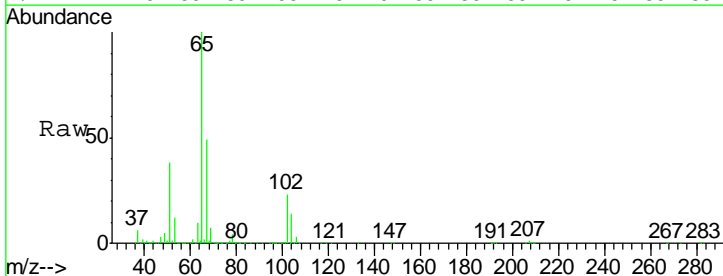
Instrument :
 MSVOA_W
 ClientSampled :
 OR-01-012519-BRE

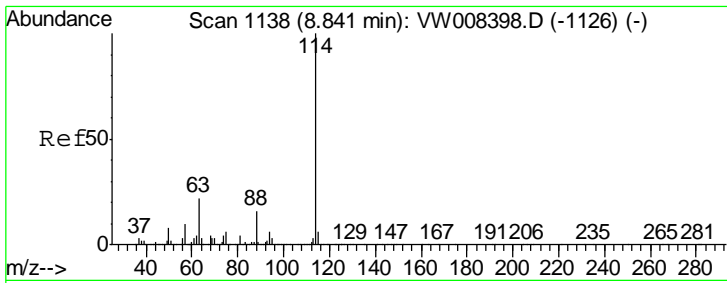
Tgt Ion	Resp	Lower	Upper
56	13956		
69	119.1	26.4	39.6#
84	129.9	69.1	103.7#



#33
 1,2-Dichloroethane-d4
 Concen: 52.609 ug/l
 RT: 8.31 min Scan# 1050
 Delta R.T. 0.00 min
 Lab File: VW008439.D
 Acq: 28 Jan 2019 15:01

Tgt Ion	Resp	Lower	Upper
65	219655		
67	51.3	0.0	104.0

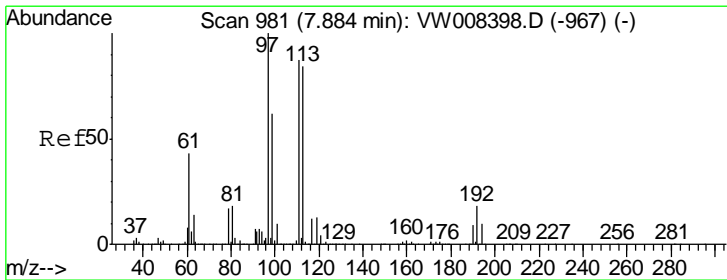
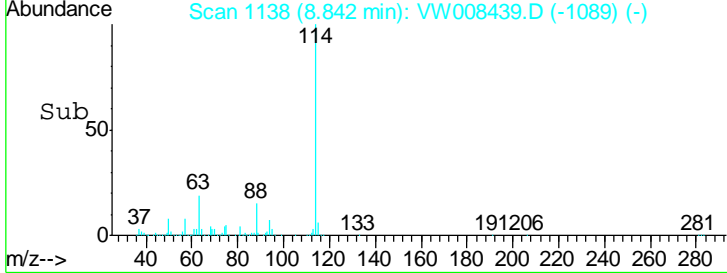
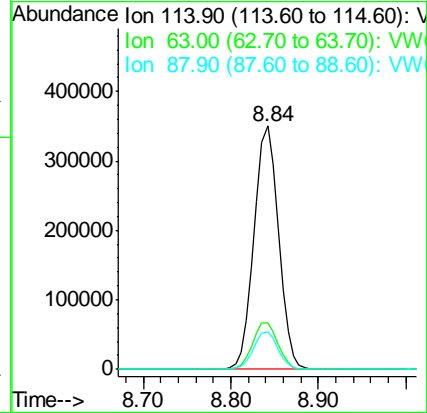
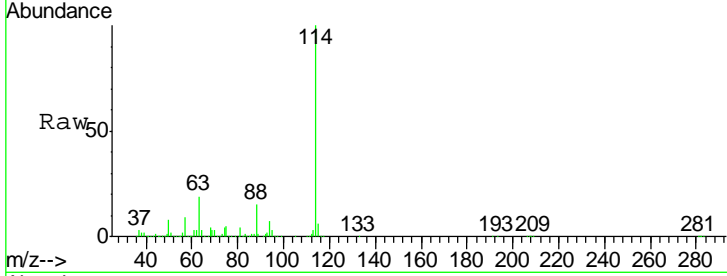




#34
 1,4-Difluorobenzene
 Concen: 50.000 ug/l
 RT: 8.84 min Scan# 1138
 Delta R.T. 0.00 min
 Lab File: VW008439.D
 Acq: 28 Jan 2019 15:01

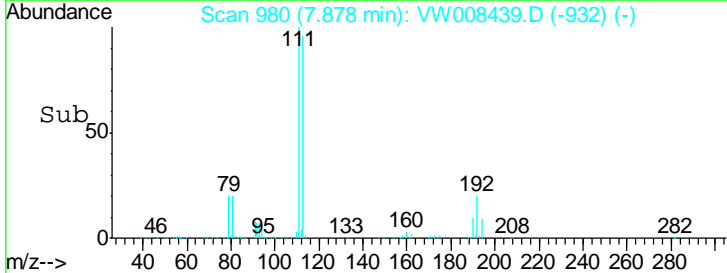
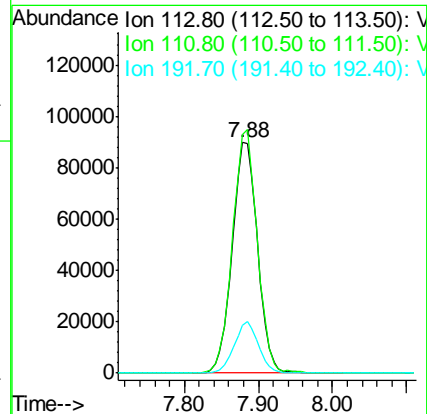
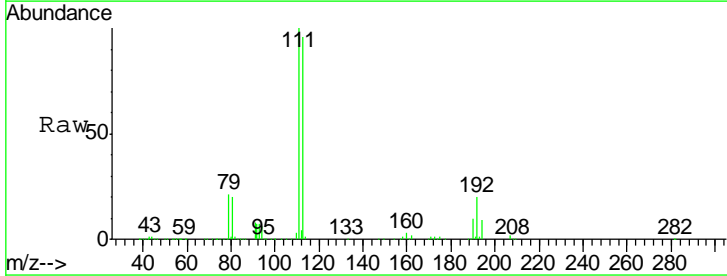
Instrument : MSVOA_W
 ClientSampled : OR-01-012519-BRE

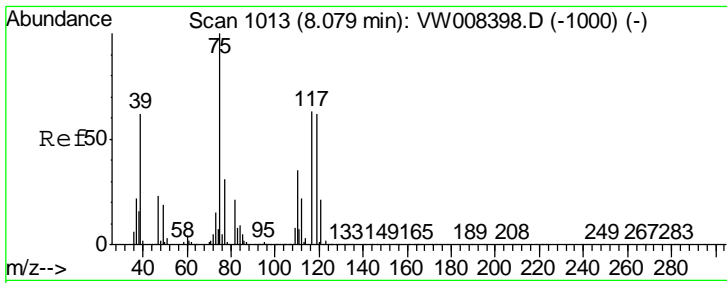
Tgt Ion	Resp	Lower	Upper
114	682341		
63	19.3	0.0	43.6
88	15.3	0.0	31.8



#35
 Dibromofluoromethane
 Concen: 53.717 ug/l
 RT: 7.88 min Scan# 980
 Delta R.T. -0.01 min
 Lab File: VW008439.D
 Acq: 28 Jan 2019 15:01

Tgt Ion	Resp	Lower	Upper
113	214324		
111	103.1	81.0	121.4
192	21.3	16.8	25.2

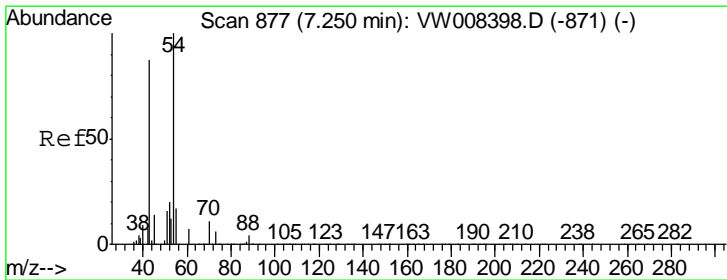
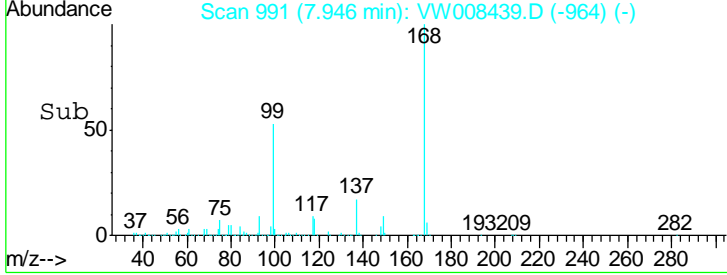
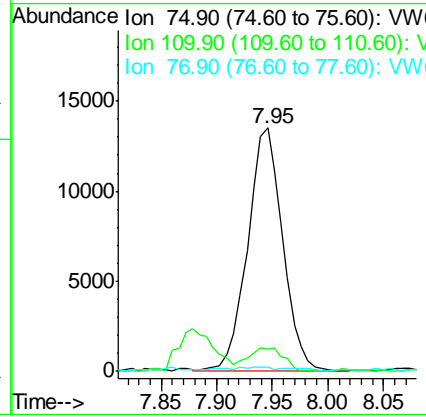
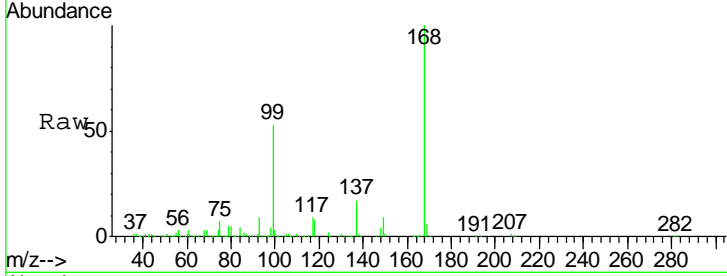




#36
 1,1-Dichloropropene
 Concen: 4.605 ug/l
 RT: 7.95 min Scan# 991
 Delta R.T. -0.13 min
 Lab File: VW008439.D
 Acq: 28 Jan 2019 15:01

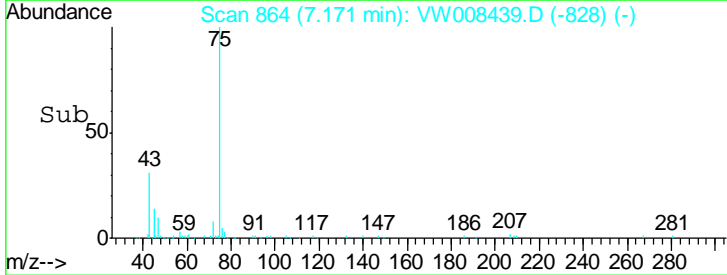
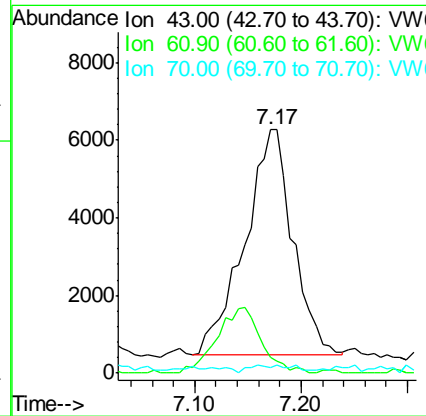
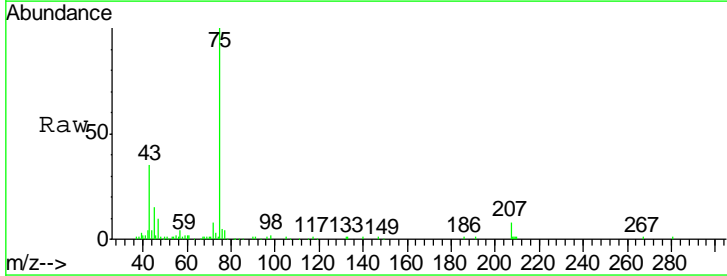
Instrument :
 MSVOA_W
ClientSampled :
 OR-01-012519-BRE

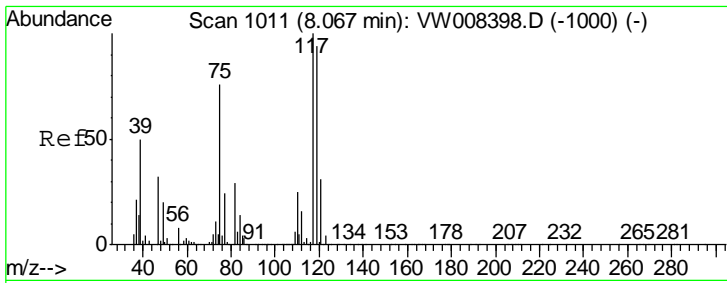
Tgt Ion	Resp	Lower	Upper
75	100		
110	9.5	17.3	52.0#
77	1.0	24.7	37.1#



#37
 Ethyl Acetate
 Concen: 6.469 ug/l
 RT: 7.17 min Scan# 864
 Delta R.T. -0.08 min
 Lab File: VW008439.D
 Acq: 28 Jan 2019 15:01

Tgt Ion	Resp	Lower	Upper
43	100		
61	0.0	10.1	15.1#
70	0.0	7.8	11.6#

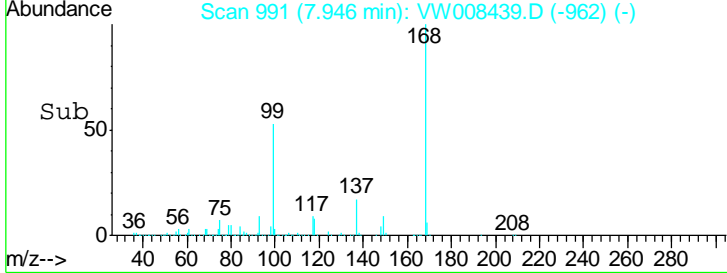
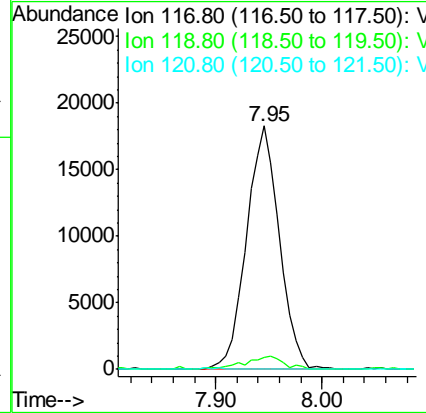
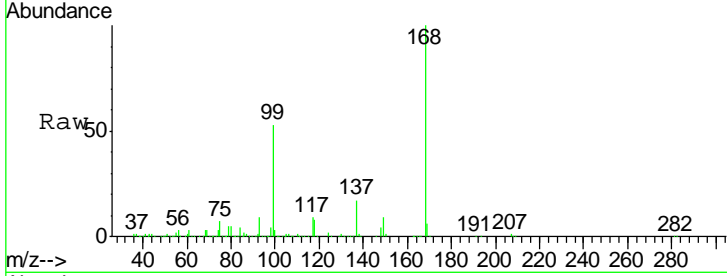




#38
 Carbon Tetrachloride
 Concen: 6.100 ug/l
 RT: 7.95 min Scan# 991
 Delta R.T. -0.12 min
 Lab File: VW008439.D
 Acq: 28 Jan 2019 15:01

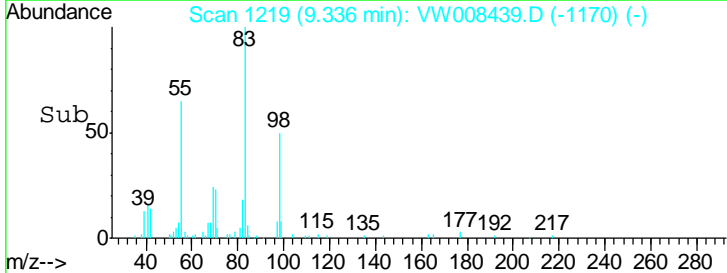
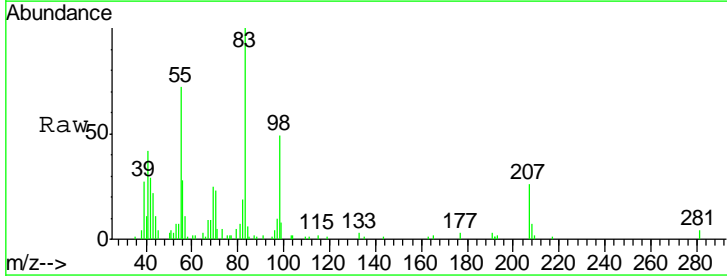
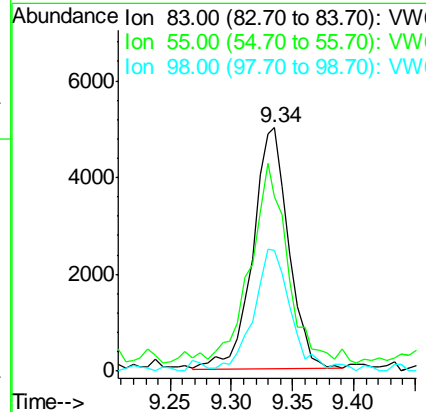
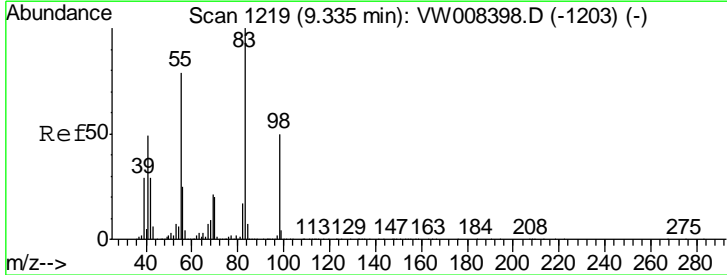
Instrument :
 MSVOA_W
ClientSampleId :
 OR-01-012519-BRE

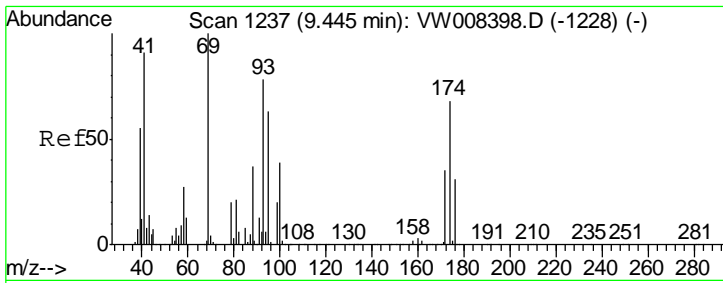
Tgt Ion	Resp	Lower	Upper
117	100		
119	5.0	75.0	112.4#
121	0.0	24.9	37.3#



#39
 Methylcyclohexane
 Concen: 1.198 ug/l
 RT: 9.34 min Scan# 1219
 Delta R.T. 0.00 min
 Lab File: VW008439.D
 Acq: 28 Jan 2019 15:01

Tgt Ion	Resp	Lower	Upper
83	100		
55	67.4	63.3	94.9
98	47.1	39.7	59.5

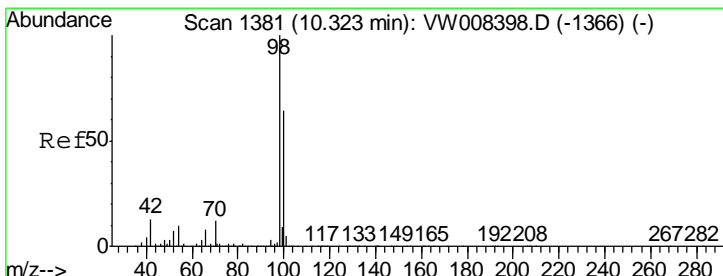
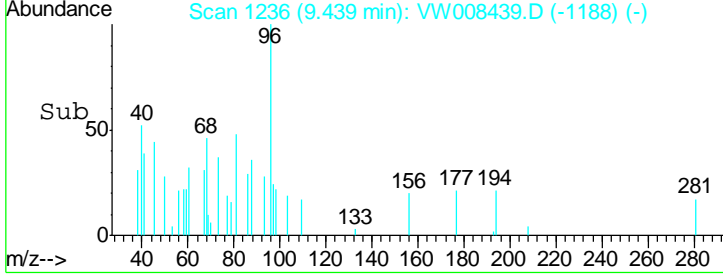
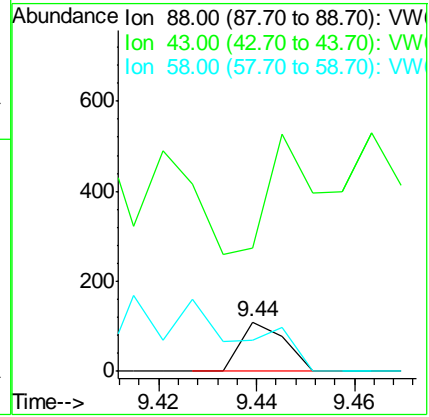
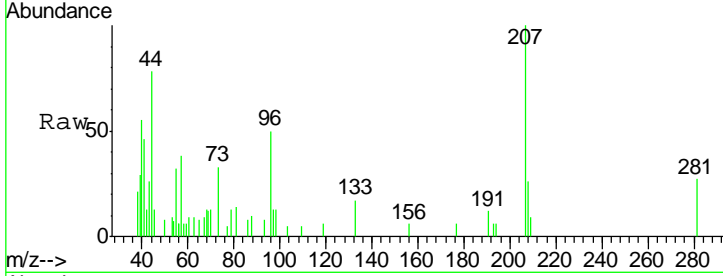




#49
 1,4-Dioxane
 Concen: 1.754 ug/l
 RT: 9.44 min Scan# 1236
 Delta R.T. -0.01 min
 Lab File: VW008439.D
 Acq: 28 Jan 2019 15:01

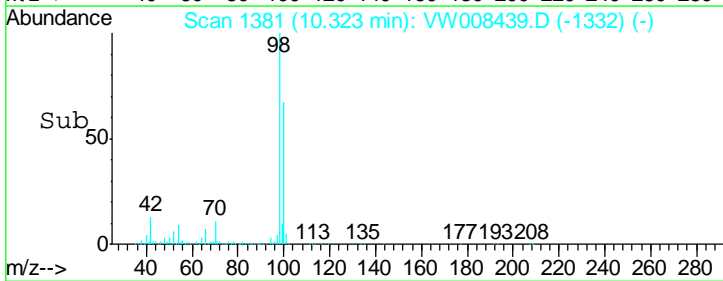
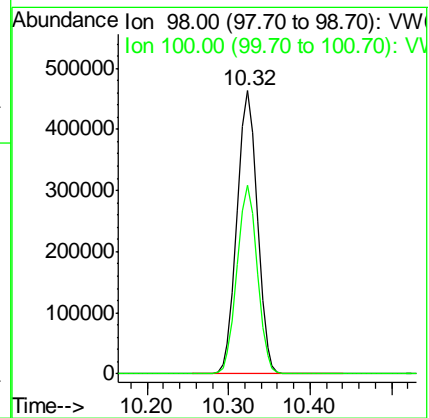
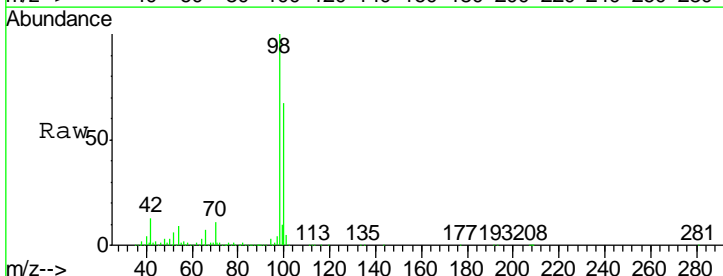
Instrument :
 MSVOA_W
ClientSampled :
 OR-01-012519-BRE

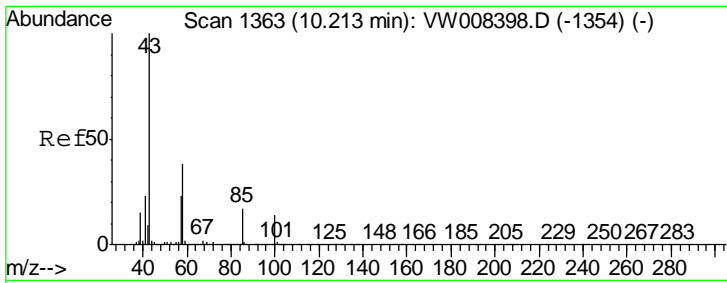
Tgt Ion	88	Resp	68
Ion	Ratio	Lower	Upper
88	100		
43	0.0	29.0	43.4#
58	0.0	56.4	84.6#



#50
 Toluene-d8
 Concen: 49.553 ug/l
 RT: 10.32 min Scan# 1381
 Delta R.T. 0.00 min
 Lab File: VW008439.D
 Acq: 28 Jan 2019 15:01

Tgt Ion	98	Resp	792828
Ion	Ratio	Lower	Upper
98	100		
100	66.1	52.6	78.8

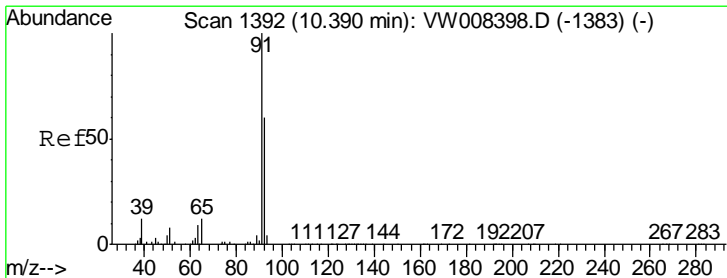
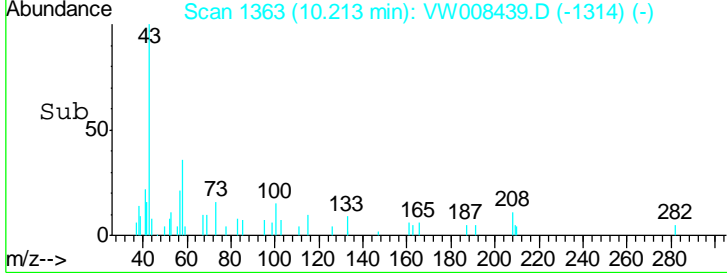
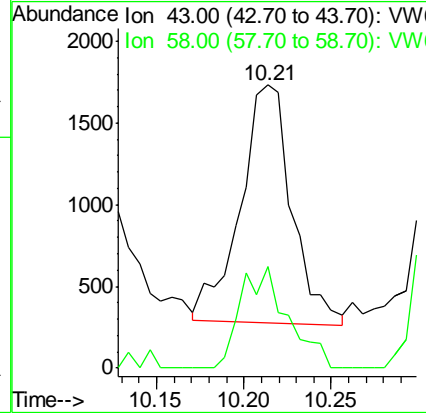
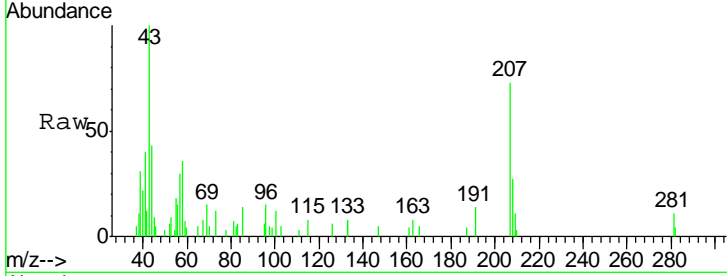




#51
 4-Methyl-2-Pentanone
 Concen: 1.020 ug/l
 RT: 10.21 min Scan# 1363
 Delta R.T. 0.00 min
 Lab File: VW008439.D
 Acq: 28 Jan 2019 15:01

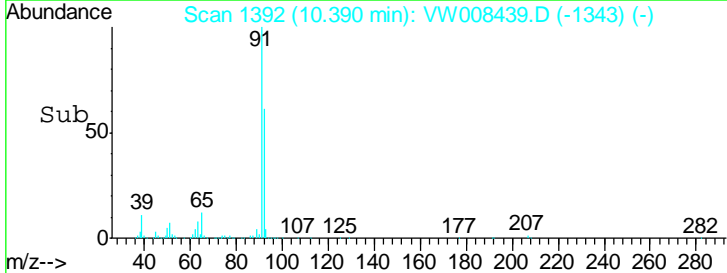
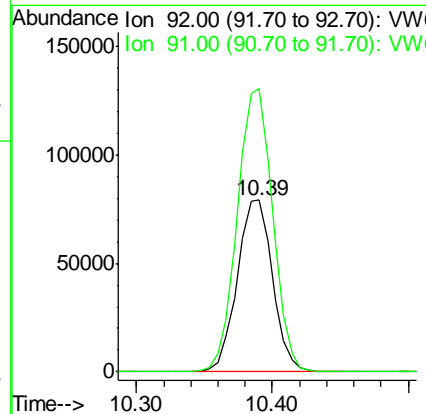
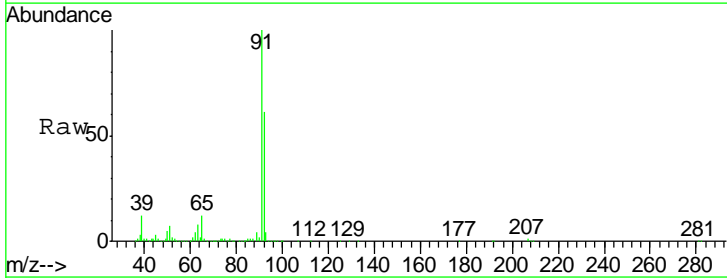
Instrument : MSVOA_W
 ClientSampled : OR-01-012519-BRE

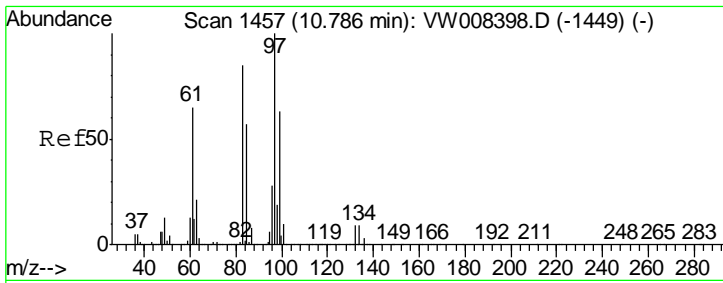
Tgt Ion	Resp	Lower	Upper
43	100		
58	38.8	29.7	44.5



#52
 Toluene
 Concen: 12.117 ug/l
 RT: 10.39 min Scan# 1392
 Delta R.T. 0.00 min
 Lab File: VW008439.D
 Acq: 28 Jan 2019 15:01

Tgt Ion	Resp	Lower	Upper
92	100		
91	165.3	135.5	203.3

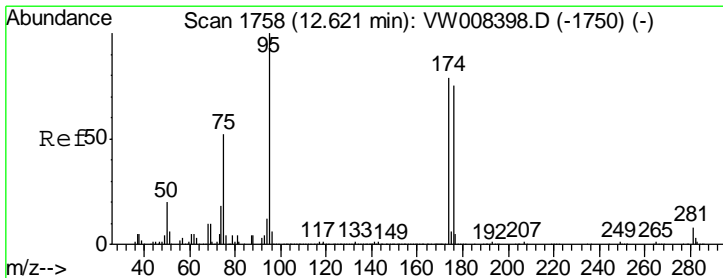
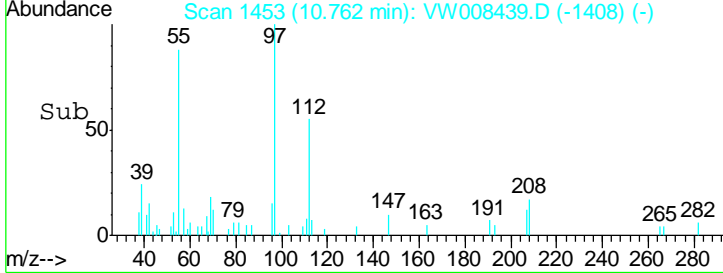
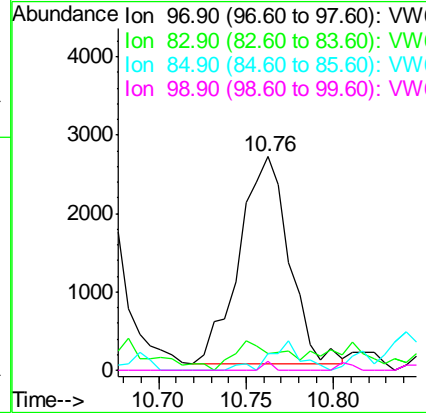
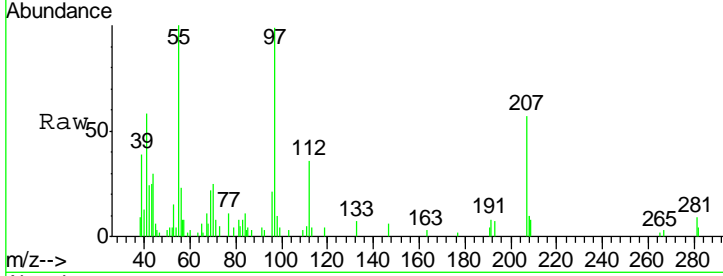




#55
 1,1,2-Trichloroethane
 Concen: 1.645 ug/l
 RT: 10.76 min Scan# 1453
 Delta R.T. -0.02 min
 Lab File: VW008439.D
 Acq: 28 Jan 2019 15:01

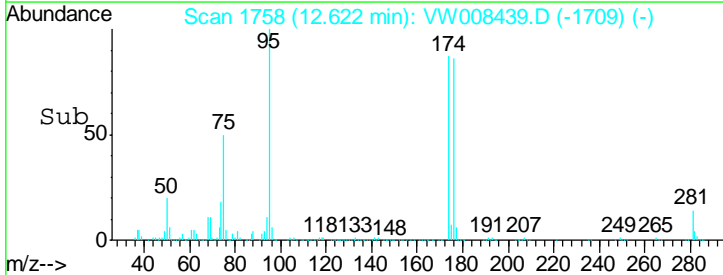
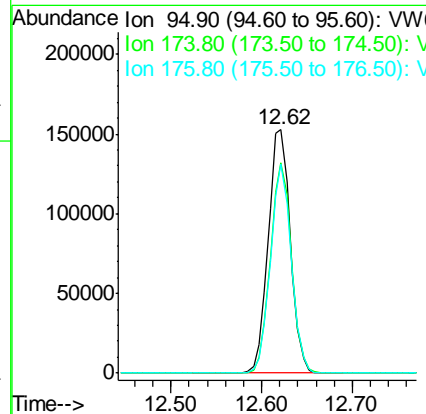
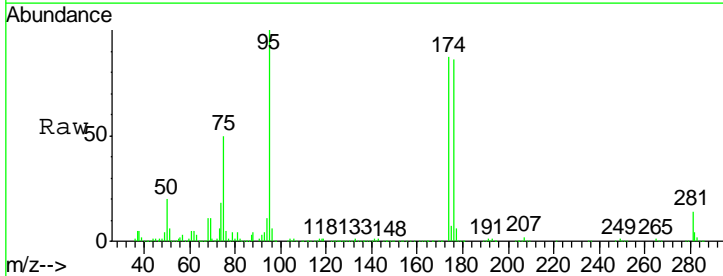
Instrument : MSVOA_W
 ClientSampled : OR-01-012519-BRE

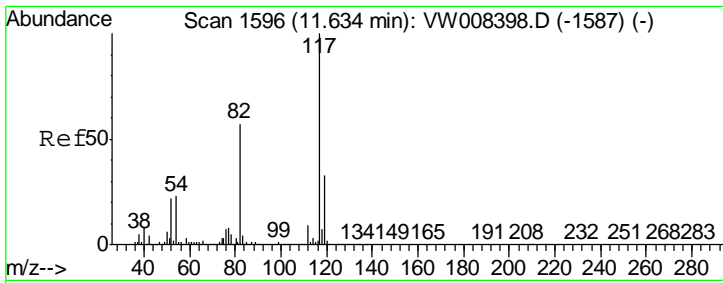
Tgt Ion	Resp	Lower	Upper
97	100		
83	5.2	68.4	102.6#
85	8.0	45.3	67.9#
99	4.1	50.6	76.0#



#62
 4-Bromofluorobenzene
 Concen: 41.743 ug/l
 RT: 12.62 min Scan# 1758
 Delta R.T. 0.00 min
 Lab File: VW008439.D
 Acq: 28 Jan 2019 15:01

Tgt Ion	Resp	Lower	Upper
95	100		
174	82.8	0.0	157.6
176	81.0	0.0	151.8

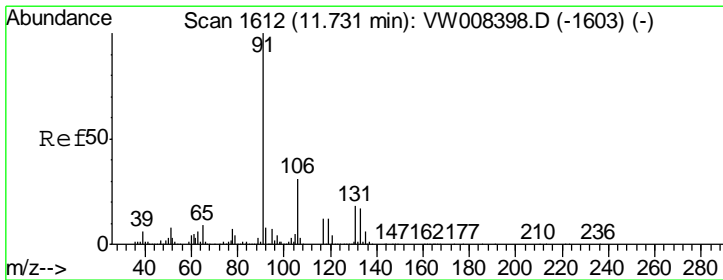
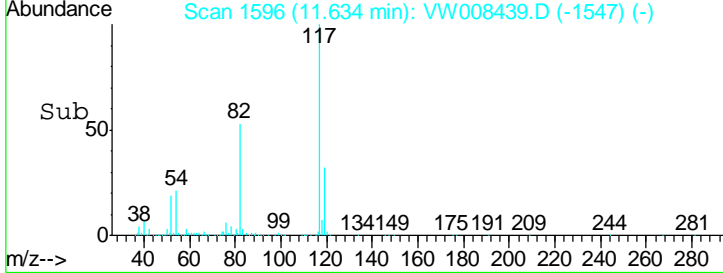
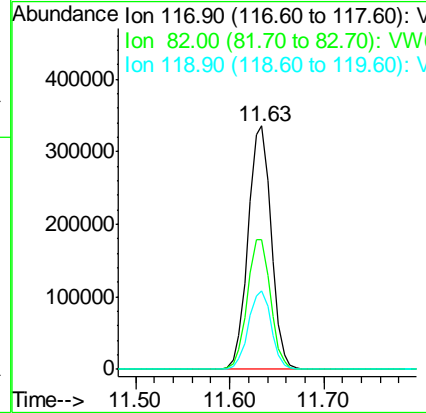
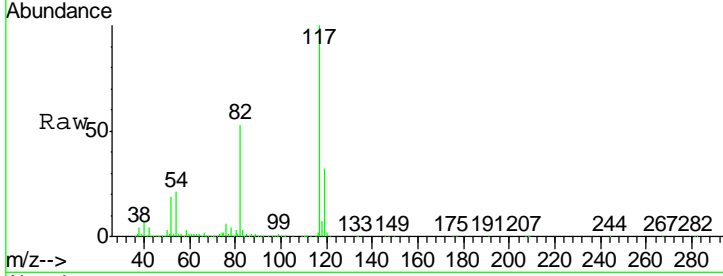




#63
 Chlorobenzene-d5
 Concen: 50.000 ug/l
 RT: 11.63 min Scan# 1596
 Delta R.T. 0.00 min
 Lab File: VW008439.D
 Acq: 28 Jan 2019 15:01

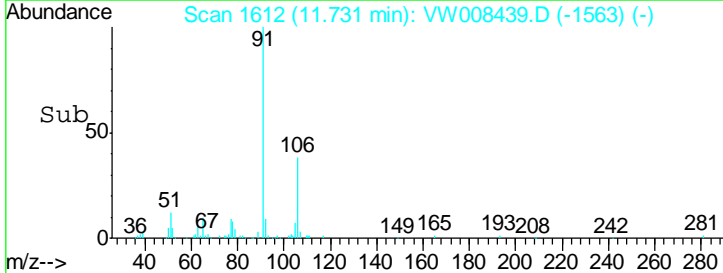
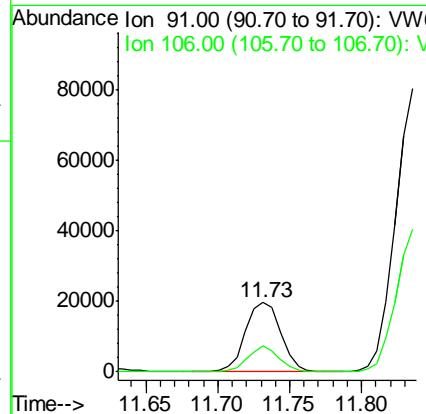
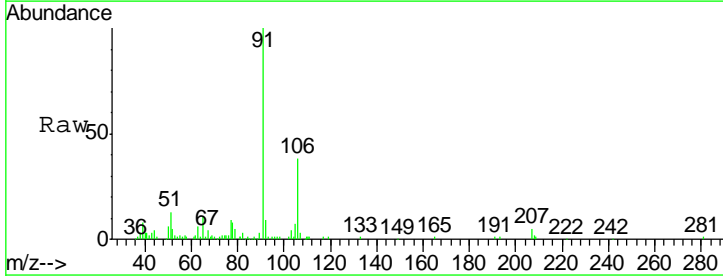
Instrument : MSVOA_W
 ClientSampled : OR-01-012519-BRE

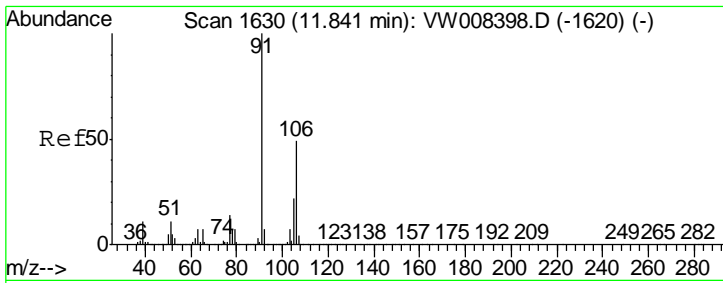
Tgt Ion	Resp	Lower	Upper
117	575161		
82	53.4	45.4	68.0
119	32.1	26.2	39.4



#67
 Ethyl Benzene
 Concen: 1.541 ug/l
 RT: 11.73 min Scan# 1612
 Delta R.T. 0.00 min
 Lab File: VW008439.D
 Acq: 28 Jan 2019 15:01

Tgt Ion	Resp	Lower	Upper
91	33267		
106	37.9	24.7	37.1#

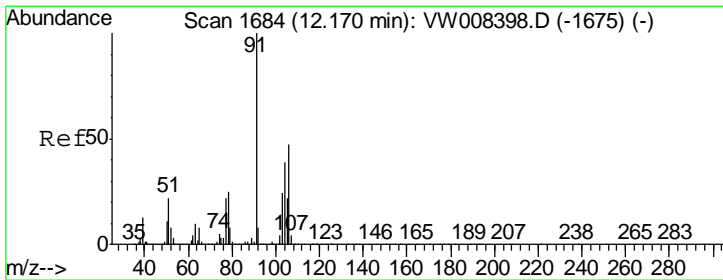
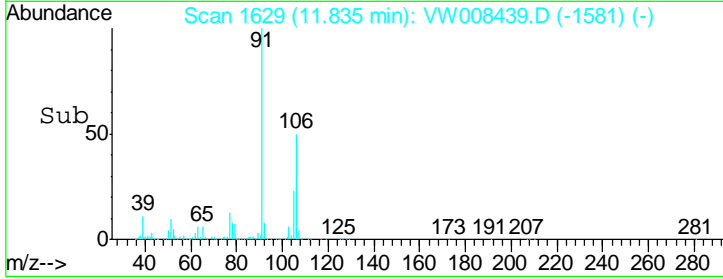
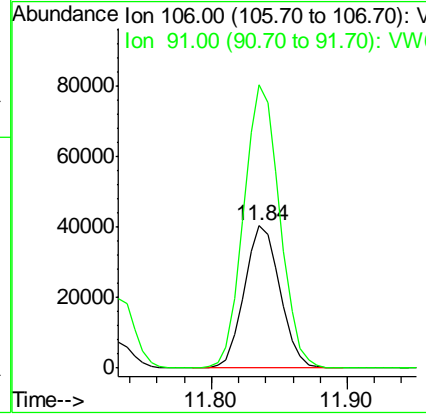
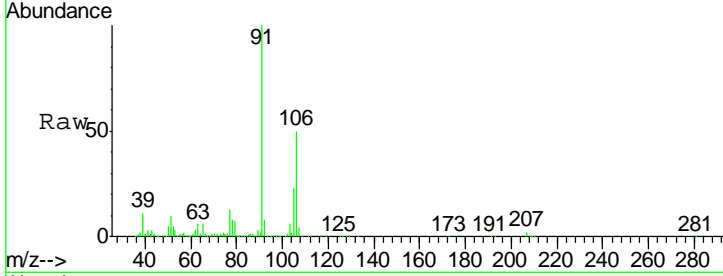




#68
 m/p-Xylenes
 Concen: 8.890 ug/l
 RT: 11.84 min Scan# 1629
 Delta R.T. -0.01 min
 Lab File: VW008439.D
 Acq: 28 Jan 2019 15:01

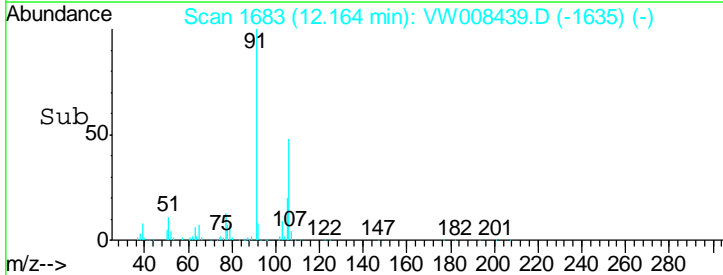
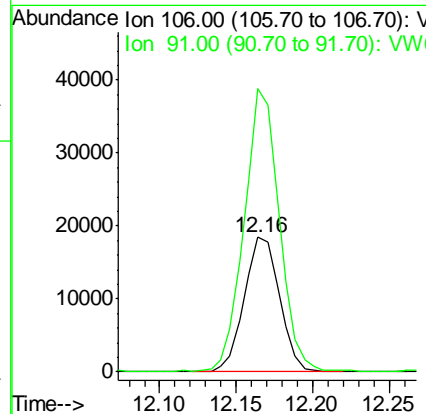
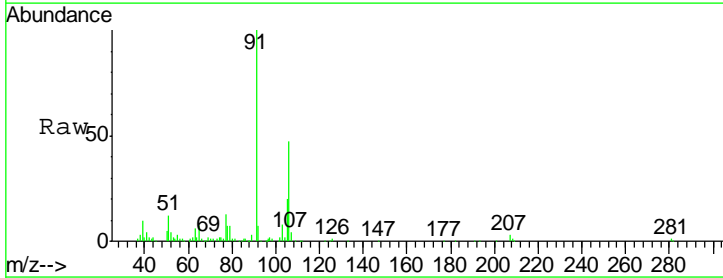
Instrument :
 MSVOA_W
ClientSampled :
 OR-01-012519-BRE

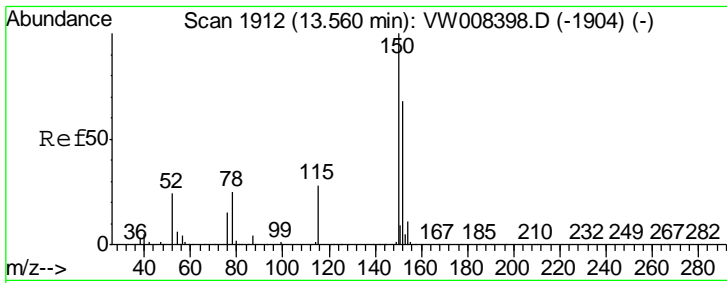
Tgt Ion:106 Resp: 74439
 Ion Ratio Lower Upper
 106 100
 91 198.9 162.9 244.3



#69
 o-Xylene
 Concen: 3.723 ug/l
 RT: 12.16 min Scan# 1683
 Delta R.T. -0.01 min
 Lab File: VW008439.D
 Acq: 28 Jan 2019 15:01

Tgt Ion:106 Resp: 29618
 Ion Ratio Lower Upper
 106 100
 91 210.6 107.5 322.4

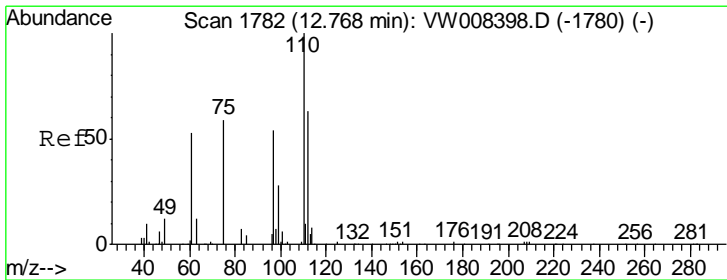
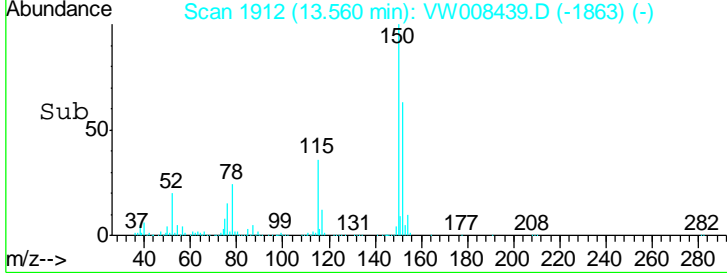
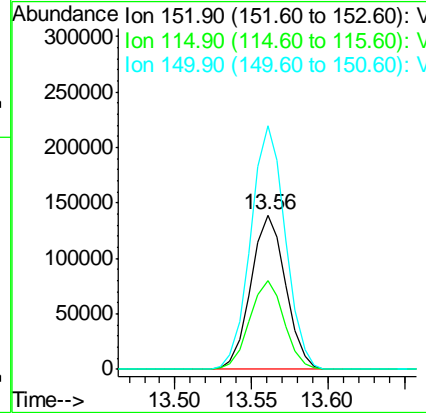
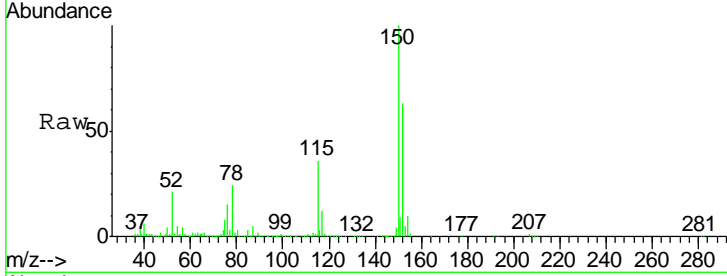




#72
 1,4-Dichlorobenzene-d4
 Concen: 50.000 ug/l
 RT: 13.56 min Scan# 1912
 Delta R.T. 0.00 min
 Lab File: VW008439.D
 Acq: 28 Jan 2019 15:01

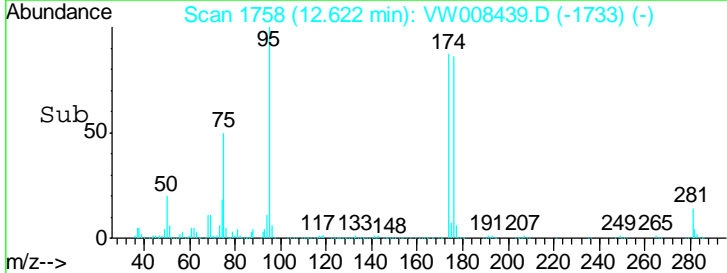
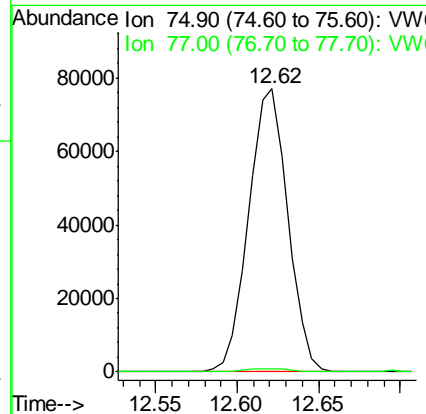
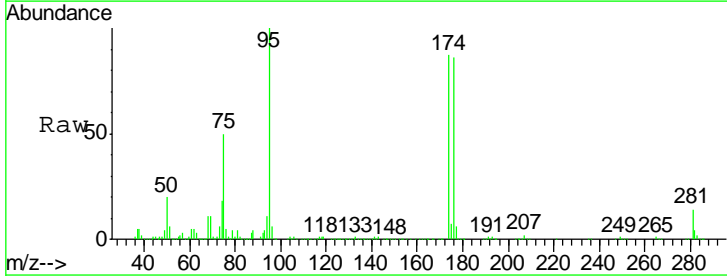
Instrument : MSVOA_W
 ClientSampleId : OR-01-012519-BRE

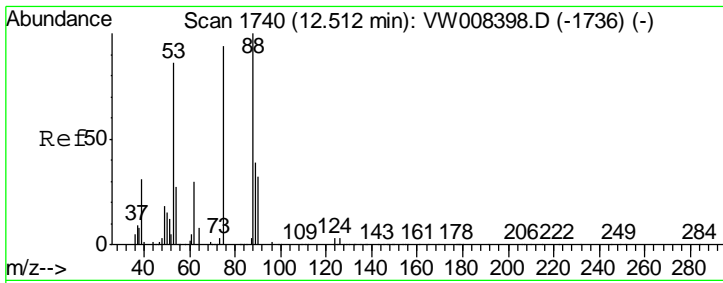
Tgt Ion	Resp	Lower	Upper
152	100		
115	57.2	29.9	89.7
150	157.6	0.0	351.4



#76
 1,2,3-Trichloropropane
 Concen: 67.419 ug/l
 RT: 12.62 min Scan# 1758
 Delta R.T. -0.15 min
 Lab File: VW008439.D
 Acq: 28 Jan 2019 15:01

Tgt Ion	Resp	Lower	Upper
75	100		
77	1.6	180.7	542.1#

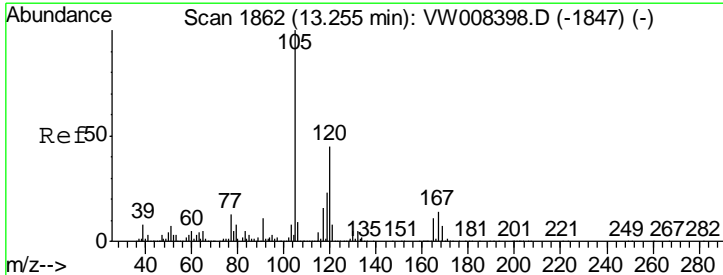
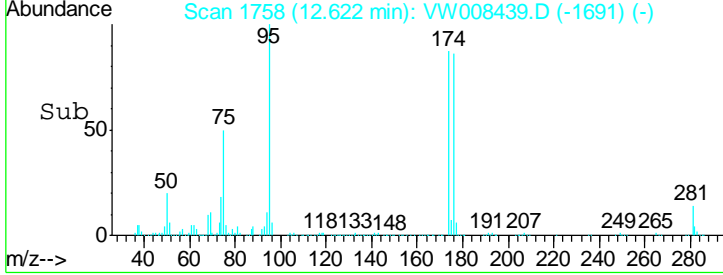
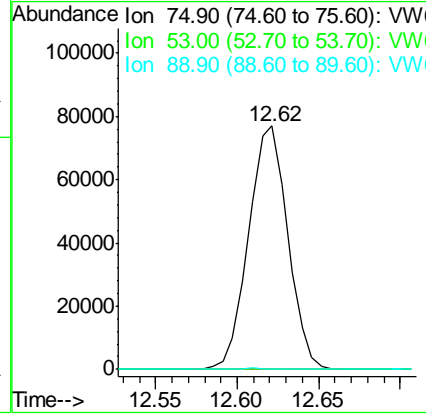
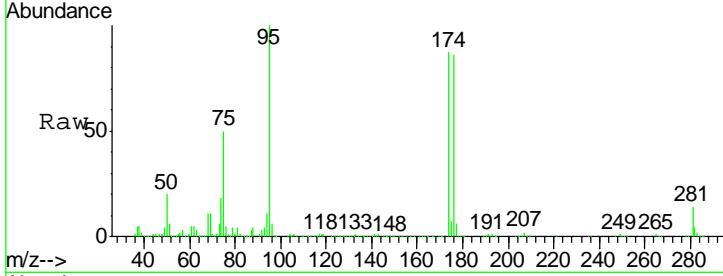




#81
 trans-1,4-Dichloro-2-butene
 Concen: 133.158 ug/l
 RT: 12.62 min Scan# 1758
 Delta R.T. 0.11 min
 Lab File: VW008439.D
 Acq: 28 Jan 2019 15:01

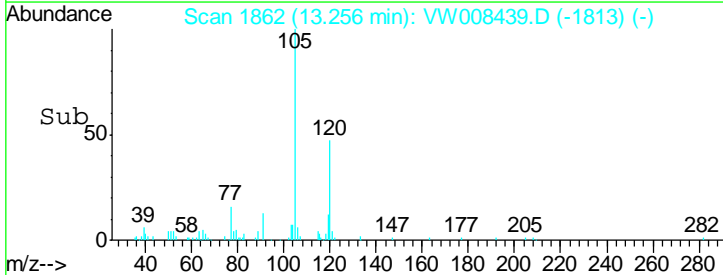
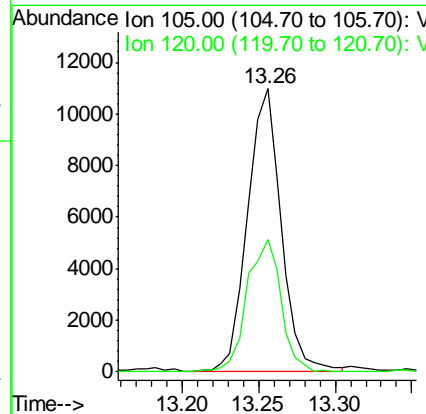
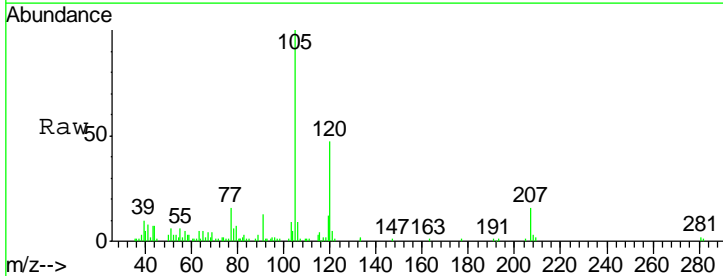
Instrument : MSVOA_W
 ClientSampled : OR-01-012519-BRE

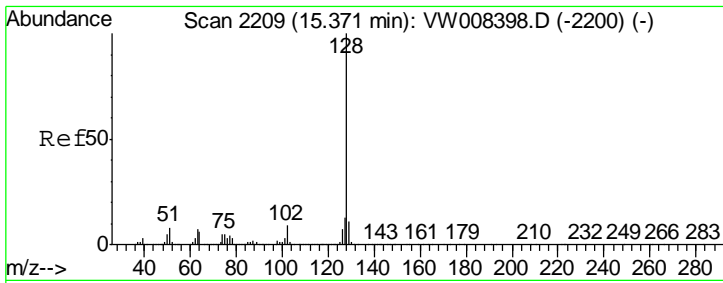
Tgt Ion	Resp	Lower	Upper
75	100		
53	0.0	76.0	114.0#
89	0.1	35.4	53.0#



#84
 1,2,4-Trimethylbenzene
 Concen: 1.211 ug/l
 RT: 13.26 min Scan# 1862
 Delta R.T. 0.00 min
 Lab File: VW008439.D
 Acq: 28 Jan 2019 15:01

Tgt Ion	Resp	Lower	Upper
105	100		
120	47.0	23.1	69.2





#95
 Naphthalene
 Concen: 2.749 ug/l
 RT: 15.37 min Scan# 2209
 Delta R.T. 0.00 min
 Lab File: VW008439.D
 Acq: 28 Jan 2019 15:01

Instrument :
 MSVOA_W
ClientSampled :
 OR-01-012519-BRE

Tgt Ion	Resp	Lower	Upper
128	22030		
127	15.4	10.6	15.8
129	13.9	8.7	13.1#

