

Data Path : Z:\voasrv\HPCHEM1\MSVOA_W\Data\VW012825\
 Data File : VW031627.D
 Acq On : 28 Jan 2025 18:42
 Operator : SY/MD
 Sample : Q1189-10MSD
 Misc : 8.90g/10mL/MSVOA_W/SOIL/A
 ALS Vial : 1 Sample Multiplier: 1

Instrument :
 MSVOA_W
 ClientSampleId :

Quant Time: Jan 29 07:35:05 2025
 Quant Method : Z:\voasrv\HPCHEM1\MSVOA_W\Method\SFAMWLM011025SMA.M
 Quant Title : SFAM01.0
 QLast Update : Tue Jan 28 00:17:29 2025
 Response via : Initial Calibration

Compound	R.T.	QIon	Response	Conc	Units	Dev(Min)
Internal Standards						
1) 1,4-Difluorobenzene	8.837	114	878615	25.000	ug/L	0.00
28) Chlorobenzene-d5	11.629	117	777113	25.000	ug/L	0.00
58) 1,4-Dichlorobenzene-d4	13.550	152	366601	25.000	ug/L	0.00
System Monitoring Compounds						
4) Vinyl Chloride-d3	2.363	65	178178	12.924	ug/L	0.00
Spiked Amount	25.000	Range 30 - 150	Recovery =	51.680%		
7) Chloroethane-d5	2.893	69	140208	14.240	ug/L	0.00
Spiked Amount	25.000	Range 30 - 150	Recovery =	56.960%		
11) 1,1-Dichloroethene-d2	4.021	65	90246	14.712	ug/L	0.00
Spiked Amount	25.000	Range 45 - 110	Recovery =	58.840%		
21) 2-Butanone-d5	7.087	46	171166	77.231	ug/L	0.00
Spiked Amount	50.000	Range 20 - 135	Recovery =	154.460%#		
24) Chloroform-d	7.642	84	453722	19.954	ug/L	0.00
Spiked Amount	25.000	Range 40 - 150	Recovery =	79.800%		
26) 1,2-Dichloroethane-d4	8.301	65	262316	23.438	ug/L	0.00
Spiked Amount	25.000	Range 70 - 130	Recovery =	93.760%		
32) Benzene-d6	8.270	84	888804	18.208	ug/L	0.00
Spiked Amount	25.000	Range 20 - 135	Recovery =	72.840%		
36) 1,2-Dichloropropane-d6	9.270	67	287194	19.927	ug/L	0.00
Spiked Amount	25.000	Range 70 - 120	Recovery =	79.720%		
41) Toluene-d8	10.319	98	777278	17.639	ug/L	0.00
Spiked Amount	25.000	Range 30 - 130	Recovery =	70.560%		
43) trans-1,3-Dichloroprop...	10.575	79	130480	22.046	ug/L	0.00
Spiked Amount	25.000	Range 30 - 135	Recovery =	88.200%		
47) 2-Hexanone-d5	10.922	63	126825	86.229	ug/L	0.00
Spiked Amount	50.000	Range 20 - 135	Recovery =	172.460%#		
56) 1,1,2,2-Tetrachloroeth...	12.684	84	287372	32.605	ug/L	0.00
Spiked Amount	25.000	Range 45 - 120	Recovery =	130.400%#		
66) 1,2-Dichlorobenzene-d4	13.848	152	252151	19.610	ug/L	0.00
Spiked Amount	25.000	Range 75 - 120	Recovery =	78.440%		
Target Compounds						
2) Dichlorodifluoromethane	2.009	85	159754	13.979	ug/L	98
3) Chloromethane	2.222	50	197144	16.644	ug/L	100
5) Vinyl chloride	2.375	62	243646	16.127	ug/L	98
6) Bromomethane	2.789	94	138292	15.661	ug/L	98
8) Chloroethane	2.930	64	141791	15.966	ug/L	100
9) Trichlorofluoromethane	3.259	101	218056	14.528	ug/L	98
10) 1,1,2-Trichloro-1,2,2-...	4.070	101	208831	18.171	ug/L	90
12) 1,1-Dichloroethene	4.039	96	204471	17.489	ug/L	95
14) Carbon disulfide	4.387	76	593352	15.067	ug/L	99
16) Methylene chloride	4.917	84	227500	19.012	ug/L	98
17) trans-1,2-Dichloroethene	5.423	96	227475	18.115	ug/L	95
18) Methyl tert-butyl Ether	5.429	73	508280	25.243	ug/L	100
19) 1,1-Dichloroethane	6.210	63	458924	19.425	ug/L	100
20) cis-1,2-Dichloroethene	7.167	96	264522	19.730	ug/L	94
22) 2-Butanone	7.179	43	199832	68.596	ug/L	99
23) Bromochloromethane	7.514	128	116312	22.152	ug/L	93
25) Chloroform	7.673	83	457135	20.343	ug/L	98
27) 1,2-Dichloroethane	8.398	62	336402	24.306	ug/L	100
29) Cyclohexane	7.953	56	414142	16.627	ug/L	99

Data Path : Z:\voasrv\HPCHEM1\MSVOA_W\Data\VW012825\
 Data File : VW031627.D
 Acq On : 28 Jan 2025 18:42
 Operator : SY/MD
 Sample : Q1189-10MSD
 Misc : 8.90g/10mL/MSVOA_W/SOIL/A
 ALS Vial : 1 Sample Multiplier: 1

Instrument :
 MSVOA_W
 ClientSampleId :

Quant Time: Jan 29 07:35:05 2025
 Quant Method : Z:\voasrv\HPCHEM1\MSVOA_W\Method\SFAMWLM011025SMA.M
 Quant Title : SFAM01.0
 QLast Update : Tue Jan 28 00:17:29 2025
 Response via : Initial Calibration

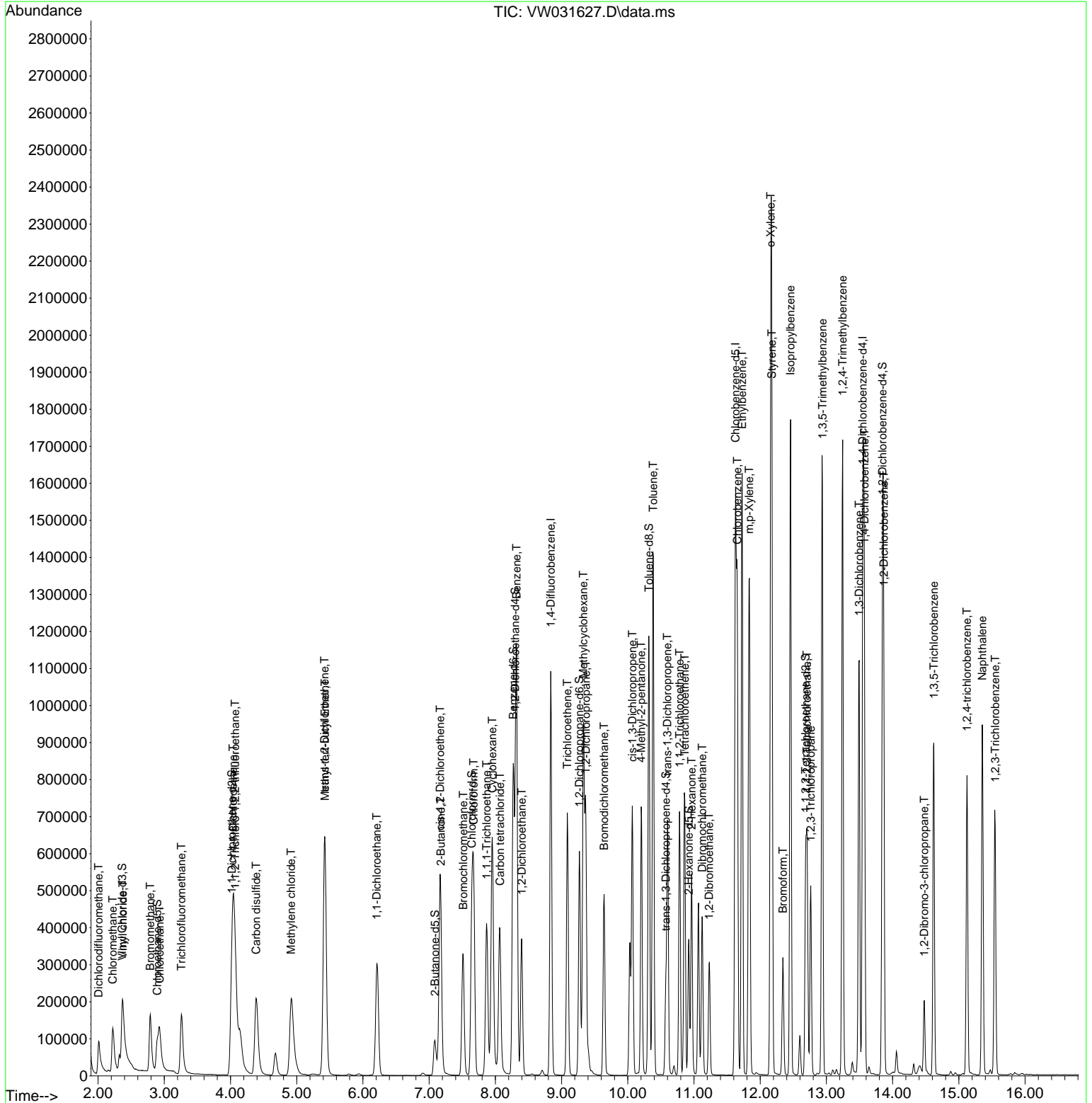
Compound	R.T.	QIon	Response	Conc	Units	Dev(Min)
30) 1,1,1-Trichloroethane	7.868	97	346931	17.198	ug/L	99
31) Carbon tetrachloride	8.069	117	313428	17.524	ug/L	99
33) Benzene	8.319	78	994740	18.703	ug/L	100
34) Trichloroethene	9.087	95	256128	17.912	ug/L	97
35) Methylcyclohexane	9.331	83	399313	15.576	ug/L	99
37) 1,2-Dichloropropane	9.367	63	274567	20.540	ug/L	99
38) Bromodichloromethane	9.642	83	337863	20.895	ug/L	97
39) cis-1,3-Dichloropropene	10.069	75	435139	20.693	ug/L	96
40) 4-Methyl-2-pentanone	10.203	43	475686	71.291	ug/L	99
42) Toluene	10.386	91	1041247	18.729	ug/L	99
44) trans-1,3-Dichloropropene	10.599	75	382151	22.735	ug/L	99
45) 1,1,2-Trichloroethane	10.782	97	220576	25.743	ug/L	95
46) Tetrachloroethene	10.861	164	171061	16.671	ug/L	95
48) 2-Hexanone	10.965	43	336932	82.632	ug/L	99
49) Dibromochloromethane	11.123	129	225179	23.885	ug/L	97
50) 1,2-Dibromoethane	11.227	107	219031	27.581	ug/L	98
51) Chlorobenzene	11.654	112	658424	19.179	ug/L	100
52) Ethylbenzene	11.727	91	1153315	18.079	ug/L	97
53) m,p-Xylene	11.837	106	442037	18.174	ug/L	95
54) o-Xylene	12.160	106	430737	19.055	ug/L	95
55) Styrene	12.178	104	726657	19.319	ug/L	99
57) 1,1,2,2-Tetrachloroethane	12.708	83	289295	30.727	ug/L	94
59) Bromoform	12.343	173	124452	25.477	ug/L	98
60) Isopropylbenzene	12.458	105	1132057	17.677	ug/L	99
61) 1,2,3-Trichloropropane	12.763	75	222032	32.251	ug/L	99
62) 1,3,5-Trimethylbenzene	12.940	105	917946	17.407	ug/L	98
63) 1,2,4-Trimethylbenzene	13.245	105	912759	17.784	ug/L	98
64) 1,3-Dichlorobenzene	13.495	146	447527	17.619	ug/L	94
65) 1,4-Dichlorobenzene	13.574	146	462450	18.408	ug/L	97
67) 1,2-Dichlorobenzene	13.867	146	444505	20.492	ug/L	96
68) 1,2-Dibromo-3-chloropr...	14.476	75	55852	36.288	ug/L	94
69) 1,3,5-Trichlorobenzene	14.623	180	250558	14.556	ug/L	95
70) 1,2,4-trichlorobenzene	15.123	180	236155	17.224	ug/L	99
71) Naphthalene	15.354	128	790405	30.745	ug/L	100
72) 1,2,3-Trichlorobenzene	15.549	180	229863	19.906	ug/L	97

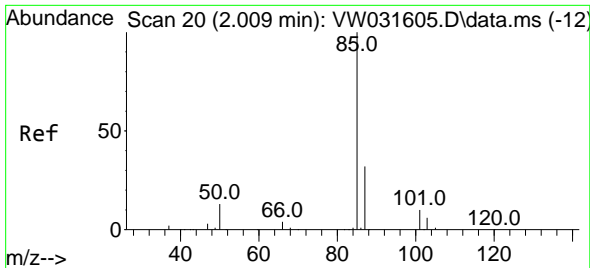
(#) = qualifier out of range (m) = manual integration (+) = signals summed

Data Path : Z:\voasrv\HPCHEM1\MSVOA_W\Data\VW012825\
 Data File : VW031627.D
 Acq On : 28 Jan 2025 18:42
 Operator : SY/MD
 Sample : Q1189-10MSD
 Misc : 8.90g/10mL/MSVOA_W/SOIL/A
 ALS Vial : 1 Sample Multiplier: 1

Instrument :
 MSVOA_W
 ClientSampleId :

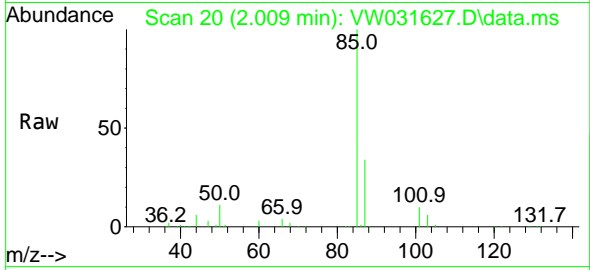
Quant Time: Jan 29 07:35:05 2025
 Quant Method : Z:\voasrv\HPCHEM1\MSVOA_W\Method\SFAMWLM011025SMA.M
 Quant Title : SFAM01.0
 QLast Update : Tue Jan 28 00:17:29 2025
 Response via : Initial Calibration



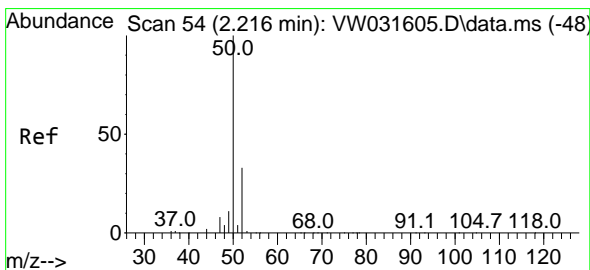
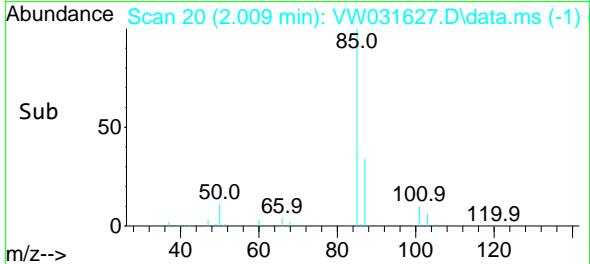
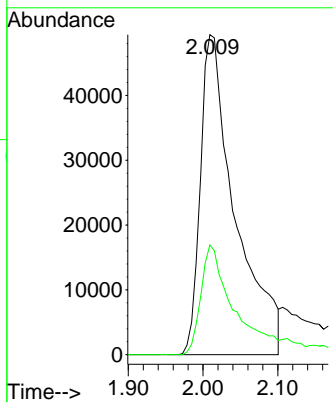


#2
 Dichlorodifluoromethane
 Concen: 13.979 ug/L
 RT: 2.009 min Scan# 20
 Delta R.T. -0.006 min
 Lab File: VW031627.D
 Acq: 28 Jan 2025 18:42

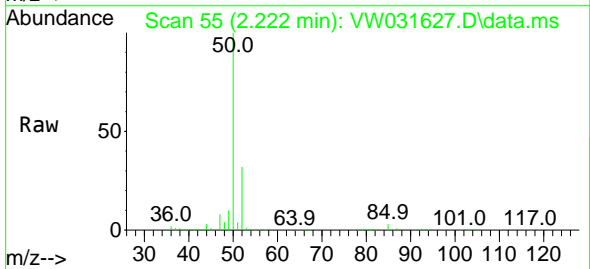
Instrument :
 MSVOA_W
 ClientSampleId :



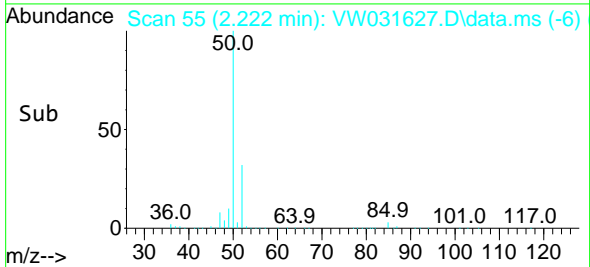
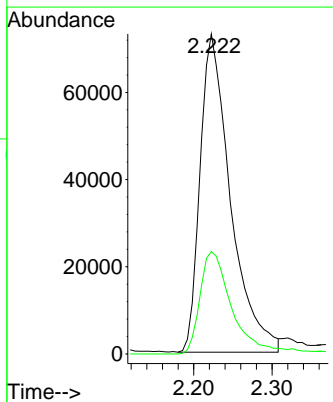
Tgt Ion: 85 Resp: 159754
 Ion Ratio Lower Upper
 85 100
 87 32.2 25.0 37.4

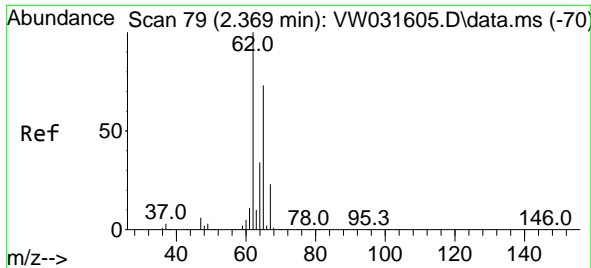


#3
 Chloromethane
 Concen: 16.644 ug/L
 RT: 2.222 min Scan# 55
 Delta R.T. -0.000 min
 Lab File: VW031627.D
 Acq: 28 Jan 2025 18:42



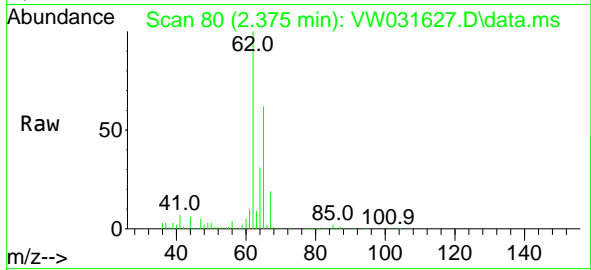
Tgt Ion: 50 Resp: 197144
 Ion Ratio Lower Upper
 50 100
 52 32.0 22.3 41.3



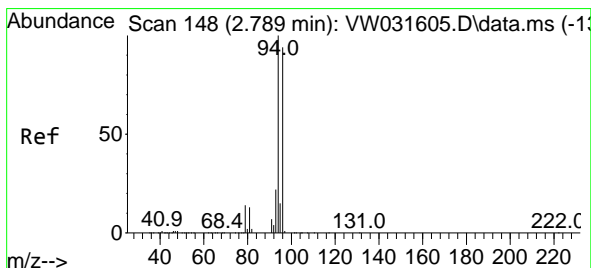
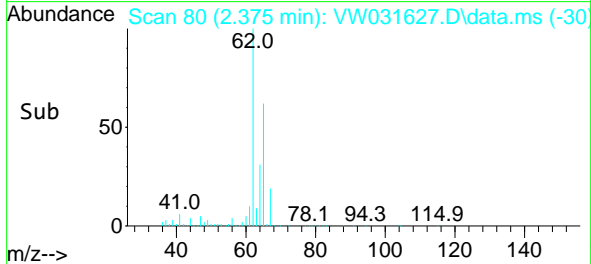
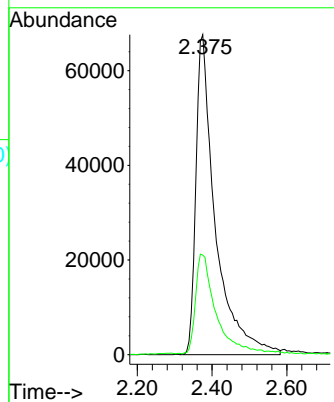


#5
 Vinyl chloride
 Concen: 16.127 ug/L
 RT: 2.375 min Scan# 80
 Delta R.T. 0.006 min
 Lab File: VW031627.D
 Acq: 28 Jan 2025 18:42

Instrument :
 MSVOA_W
 ClientSampleId :

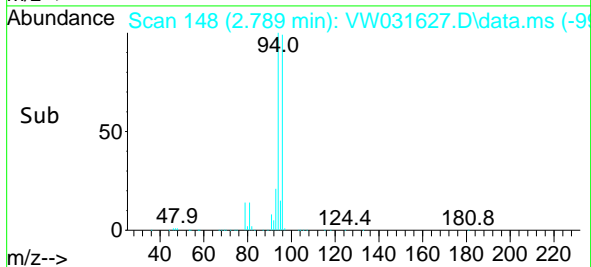
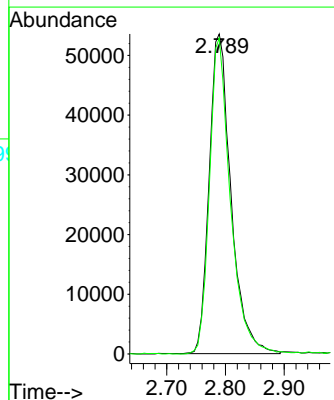
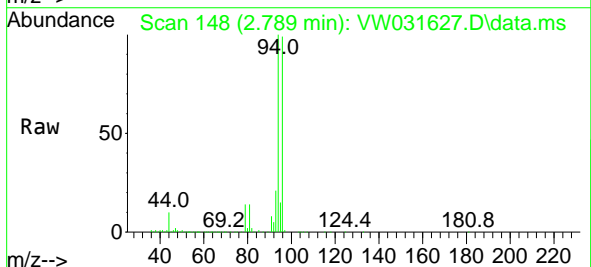


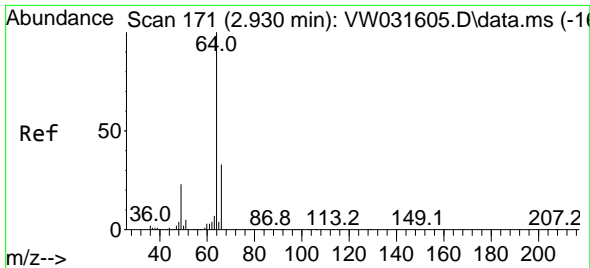
Tgt Ion: 62 Resp: 243646
 Ion Ratio Lower Upper
 62 100
 64 31.2 22.7 42.3



#6
 Bromomethane
 Concen: 15.661 ug/L
 RT: 2.789 min Scan# 148
 Delta R.T. -0.000 min
 Lab File: VW031627.D
 Acq: 28 Jan 2025 18:42

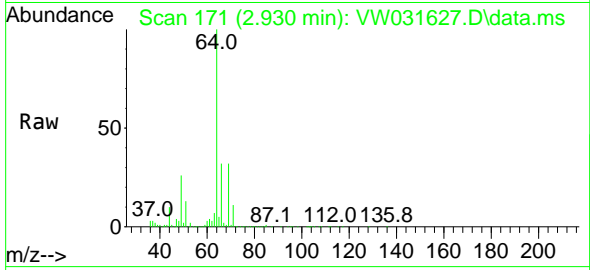
Tgt Ion: 94 Resp: 138292
 Ion Ratio Lower Upper
 94 100
 96 98.7 67.6 125.6



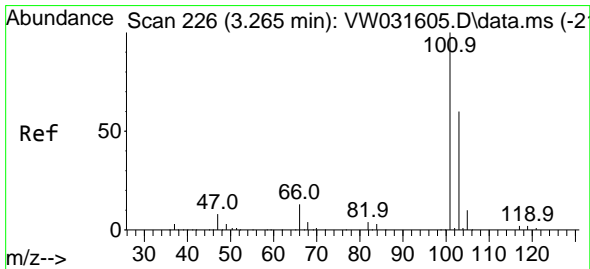
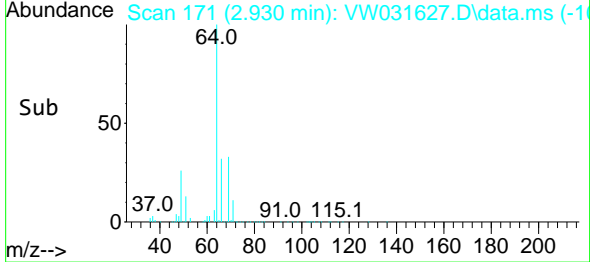
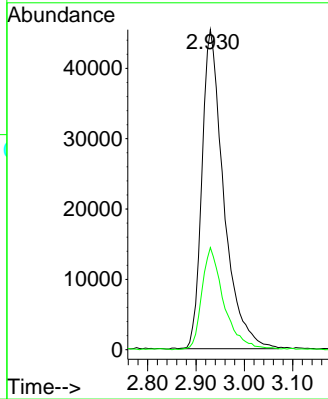


#8
 Chloroethane
 Concen: 15.966 ug/L
 RT: 2.930 min Scan# 171
 Delta R.T. -0.006 min
 Lab File: VW031627.D
 Acq: 28 Jan 2025 18:42

Instrument : MSVOA_W
 ClientSampleId :

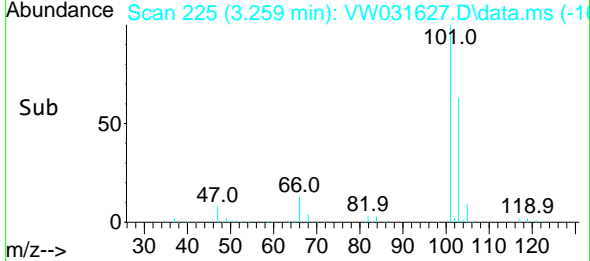
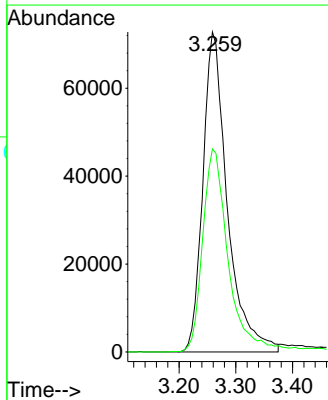
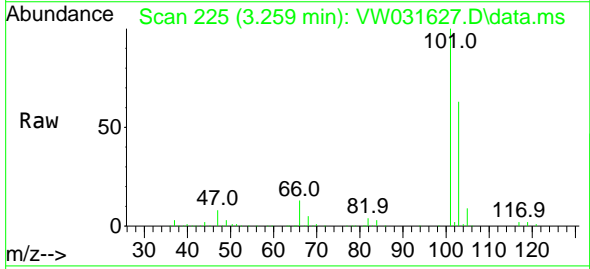


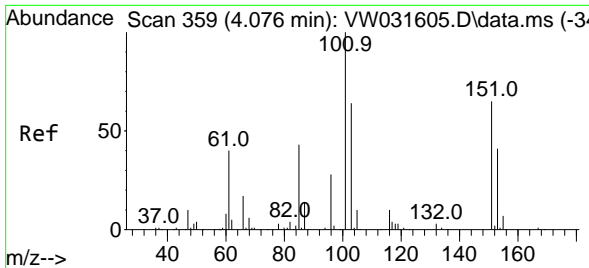
Tgt Ion: 64 Resp: 141791
 Ion Ratio Lower Upper
 64 100
 66 31.9 22.3 41.3



#9
 Trichlorofluoromethane
 Concen: 14.528 ug/L
 RT: 3.259 min Scan# 225
 Delta R.T. -0.012 min
 Lab File: VW031627.D
 Acq: 28 Jan 2025 18:42

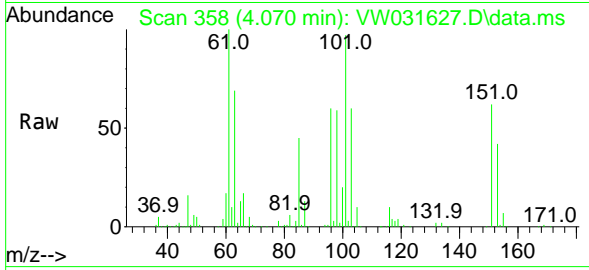
Tgt Ion: 101 Resp: 218056
 Ion Ratio Lower Upper
 101 100
 103 65.8 51.4 77.2





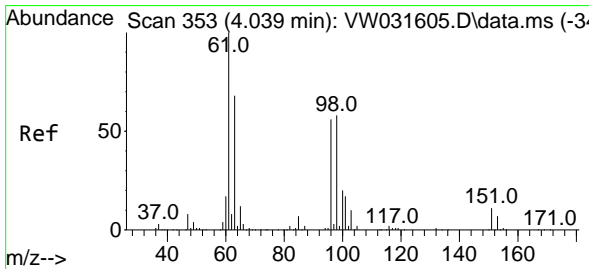
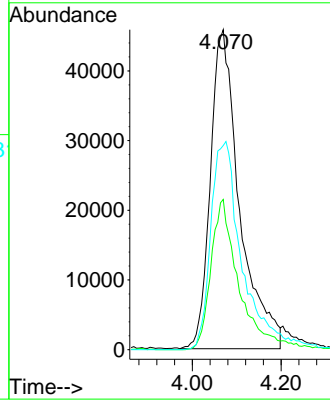
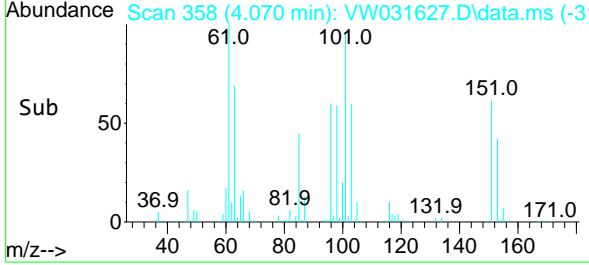
#10
 1,1,2-Trichloro-1,2,2-trifluoroethane
 Concen: 18.171 ug/L
 RT: 4.070 min Scan# 31
 Delta R.T. -0.006 min
 Lab File: VW031627.D
 Acq: 28 Jan 2025 18:42

Instrument :
 MSVOA_W
 ClientSampleId :

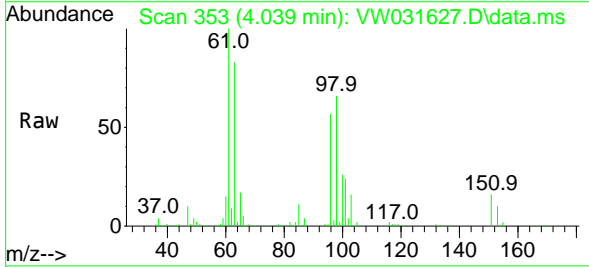


Tgt Ion: 101 Resp: 208831

Ion	Ratio	Lower	Upper
101	100		
85	44.0	36.1	54.1
151	58.5	56.9	85.3

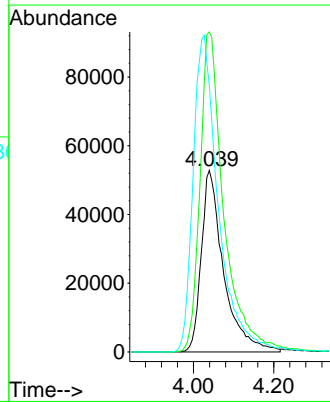
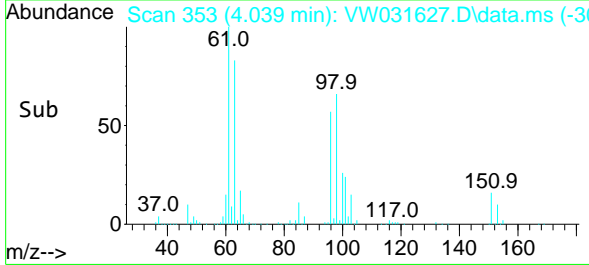


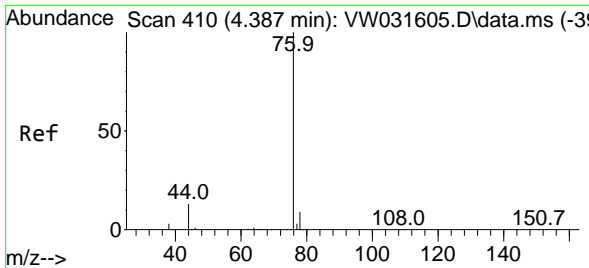
#12
 1,1-Dichloroethene
 Concen: 17.489 ug/L
 RT: 4.039 min Scan# 353
 Delta R.T. -0.000 min
 Lab File: VW031627.D
 Acq: 28 Jan 2025 18:42



Tgt Ion: 96 Resp: 204471

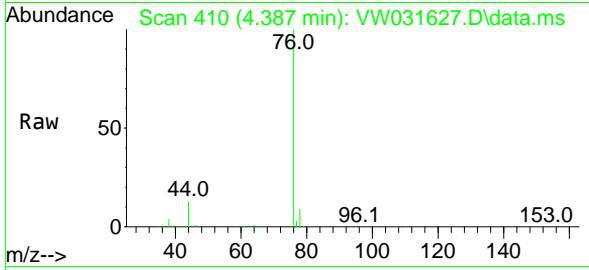
Ion	Ratio	Lower	Upper
96	100		
61	176.2	123.8	230.0
63	146.7	94.1	174.8



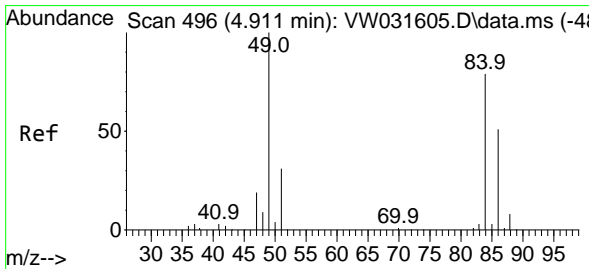
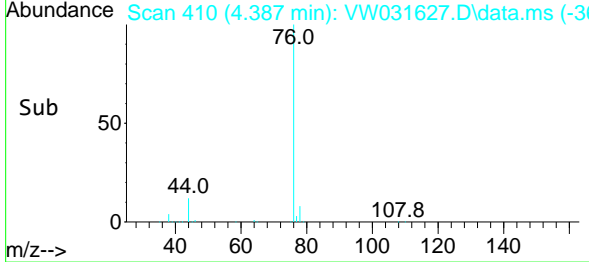
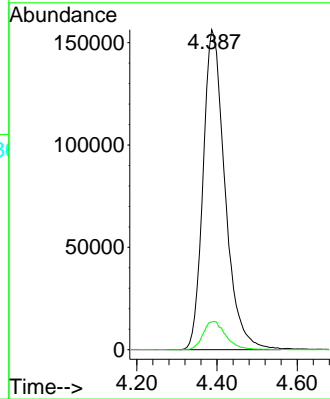


#14
 Carbon disulfide
 Concen: 15.067 ug/L
 RT: 4.387 min Scan# 410
 Delta R.T. -0.000 min
 Lab File: VW031627.D
 Acq: 28 Jan 2025 18:42

Instrument : MSVOA_W
 ClientSampleId :

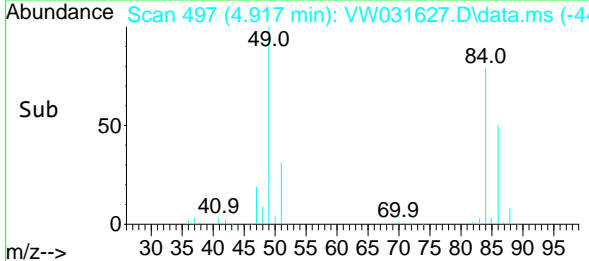
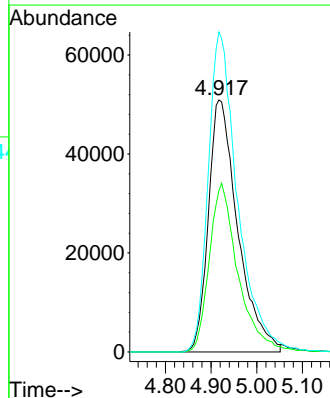
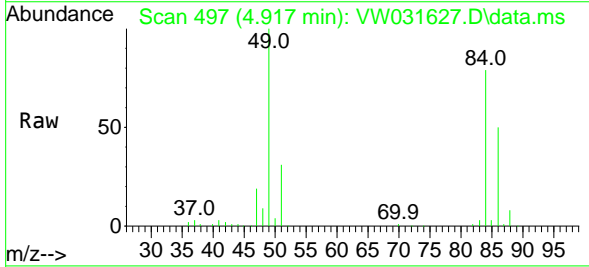


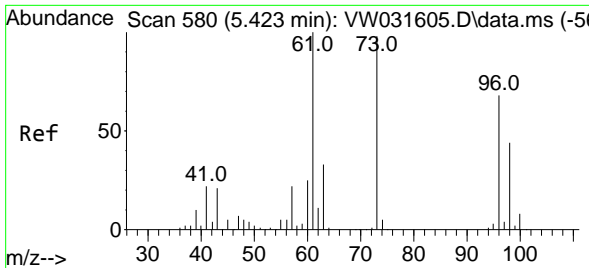
Tgt Ion: 76 Resp: 593352
 Ion Ratio Lower Upper
 76 100
 78 8.7 7.3 10.9



#16
 Methylene chloride
 Concen: 19.012 ug/L
 RT: 4.917 min Scan# 497
 Delta R.T. -0.000 min
 Lab File: VW031627.D
 Acq: 28 Jan 2025 18:42

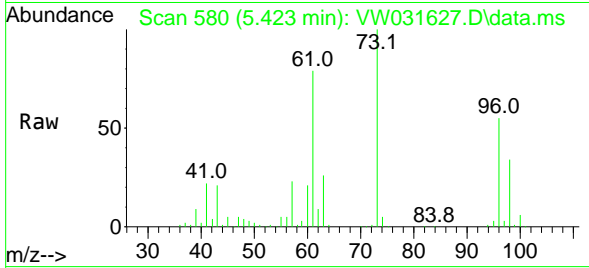
Tgt Ion: 84 Resp: 227500
 Ion Ratio Lower Upper
 84 100
 86 64.0 47.0 87.2
 49 127.0 89.8 166.8



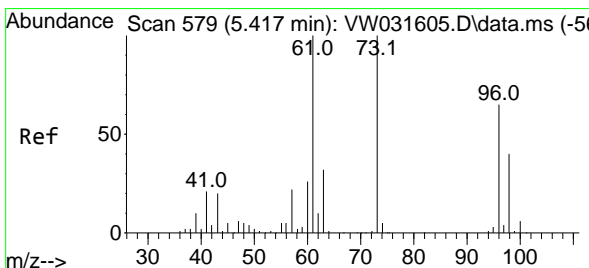
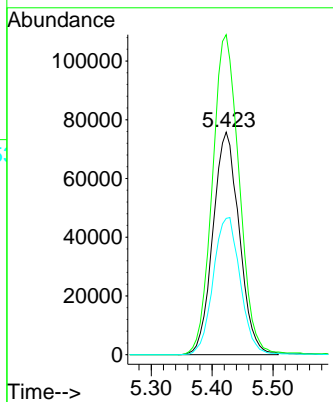
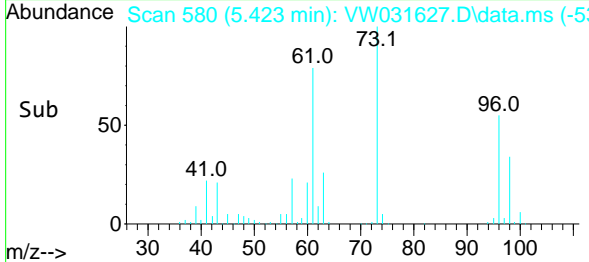


#17
 trans-1,2-Dichloroethene
 Concen: 18.115 ug/L
 RT: 5.423 min Scan# 580
 Delta R.T. -0.006 min
 Lab File: VW031627.D
 Acq: 28 Jan 2025 18:42

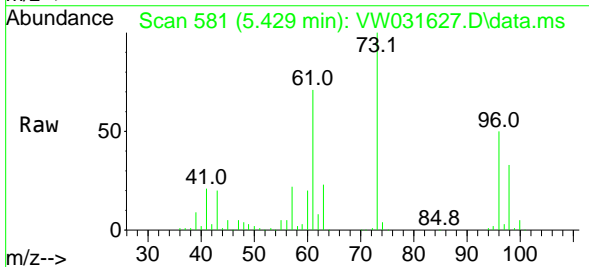
Instrument :
 MSVOA_W
 ClientSampleId :



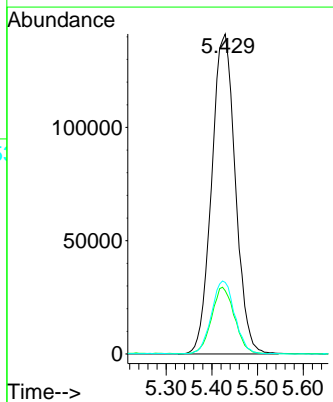
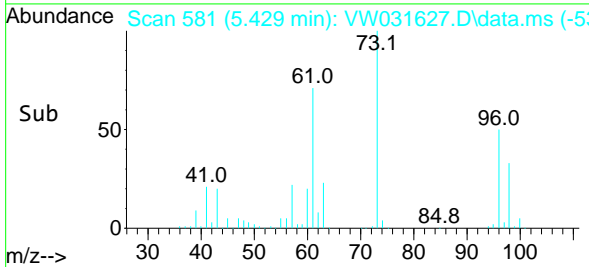
Tgt Ion: 96 Resp: 227475
 Ion Ratio Lower Upper
 96 100
 61 143.8 105.1 195.1
 98 61.3 44.9 83.3

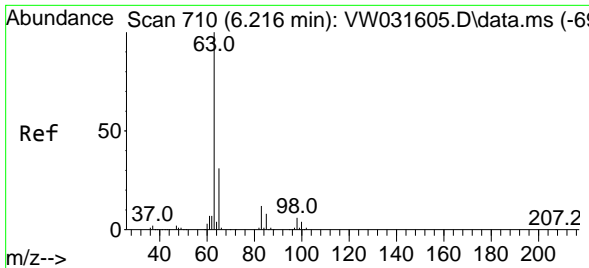


#18
 Methyl tert-butyl Ether
 Concen: 25.243 ug/L
 RT: 5.429 min Scan# 581
 Delta R.T. -0.000 min
 Lab File: VW031627.D
 Acq: 28 Jan 2025 18:42



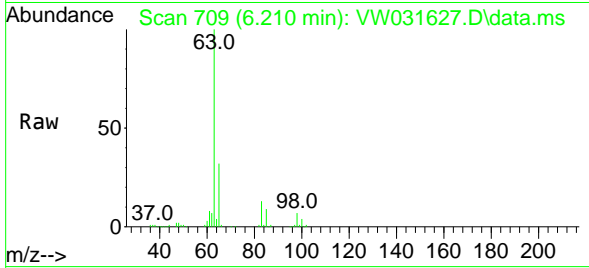
Tgt Ion: 73 Resp: 508280
 Ion Ratio Lower Upper
 73 100
 43 20.4 16.4 24.6
 57 22.5 18.2 27.2



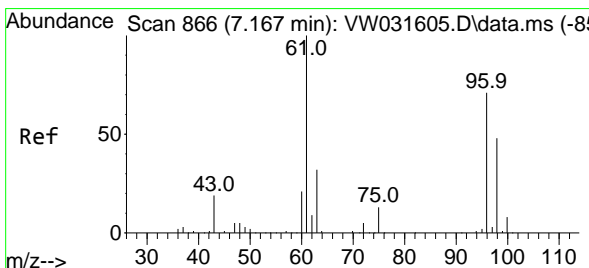
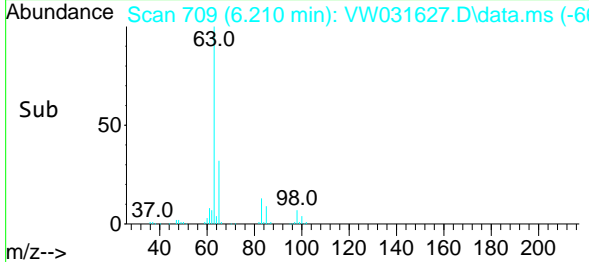
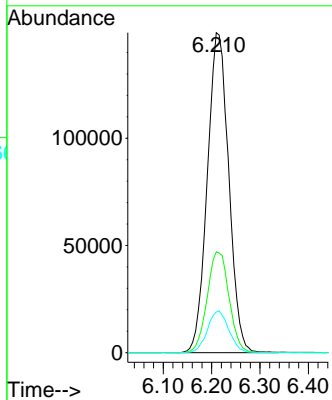


#19
 1,1-Dichloroethane
 Concen: 19.425 ug/L
 RT: 6.210 min Scan# 709
 Delta R.T. -0.012 min
 Lab File: VW031627.D
 Acq: 28 Jan 2025 18:42

Instrument : MSVOA_W
 ClientSampleId :

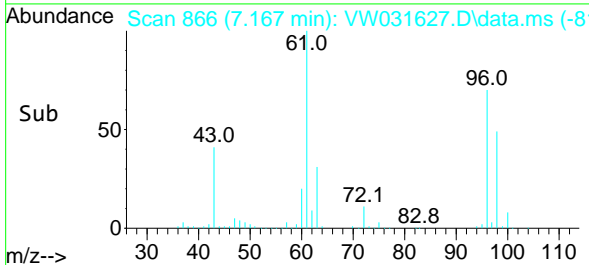
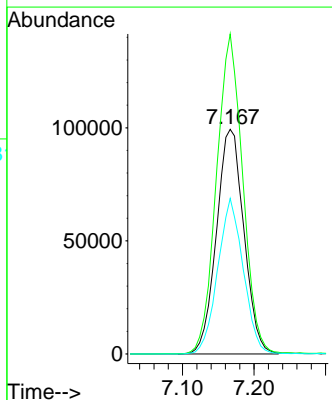
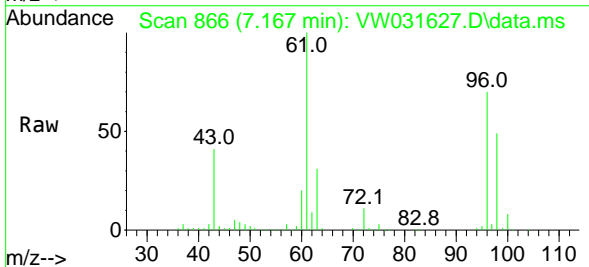


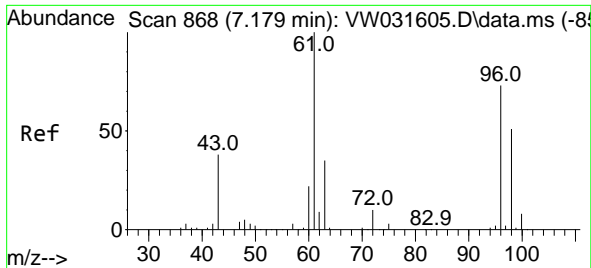
Tgt Ion: 63 Resp: 458924
 Ion Ratio Lower Upper
 63 100
 65 31.5 22.0 41.0
 83 12.7 9.0 16.6



#20
 cis-1,2-Dichloroethene
 Concen: 19.730 ug/L
 RT: 7.167 min Scan# 866
 Delta R.T. -0.006 min
 Lab File: VW031627.D
 Acq: 28 Jan 2025 18:42

Tgt Ion: 96 Resp: 264522
 Ion Ratio Lower Upper
 96 100
 61 142.4 94.8 176.2
 98 69.3 45.6 84.8

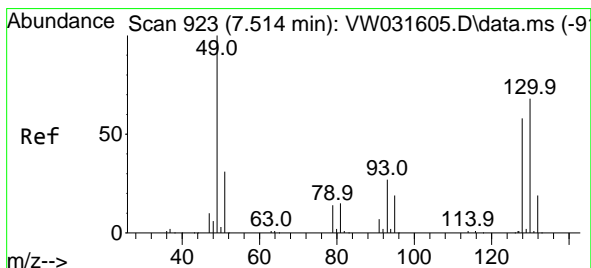
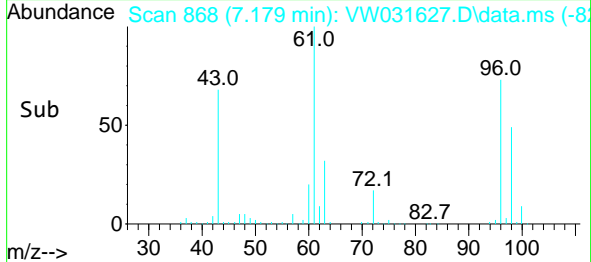
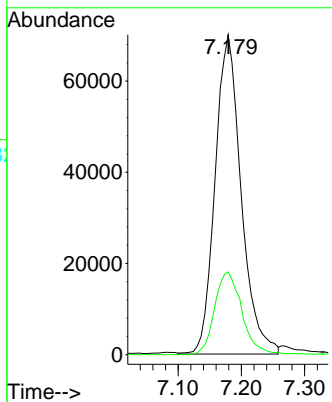
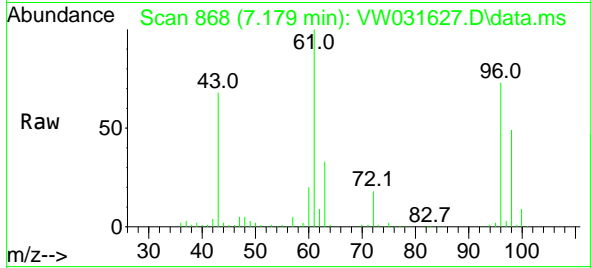




#22
 2-Butanone
 Concen: 68.596 ug/L
 RT: 7.179 min Scan# 80
 Delta R.T. -0.006 min
 Lab File: VW031627.D
 Acq: 28 Jan 2025 18:42

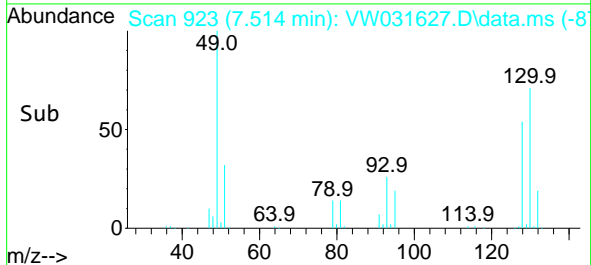
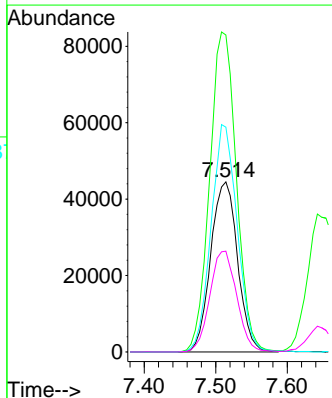
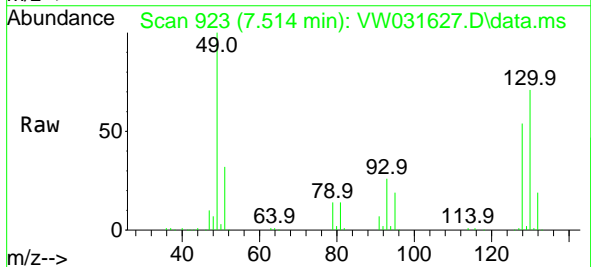
Instrument :
 MSVOA_W
 ClientSampleId :

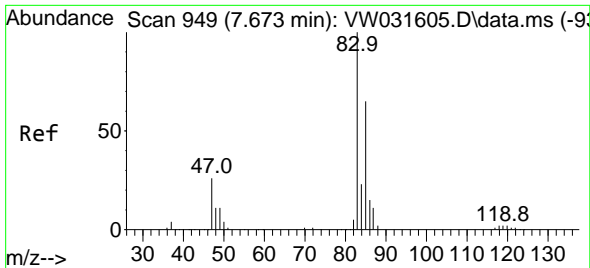
Tgt Ion: 43 Resp: 199832
 Ion Ratio Lower Upper
 43 100
 72 26.9 13.2 39.5



#23
 Bromochloromethane
 Concen: 22.152 ug/L
 RT: 7.514 min Scan# 923
 Delta R.T. -0.000 min
 Lab File: VW031627.D
 Acq: 28 Jan 2025 18:42

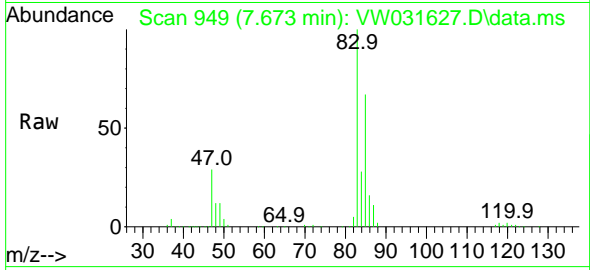
Tgt Ion:128 Resp: 116312
 Ion Ratio Lower Upper
 128 100
 49 186.3 123.9 230.1
 130 132.2 88.1 163.7
 51 59.2 42.5 63.7



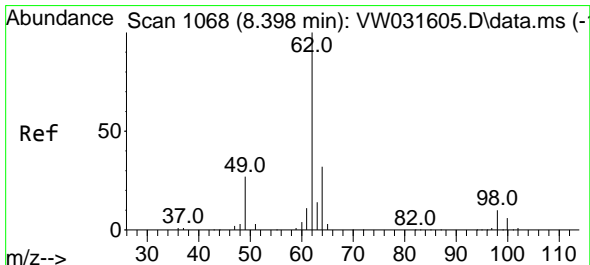
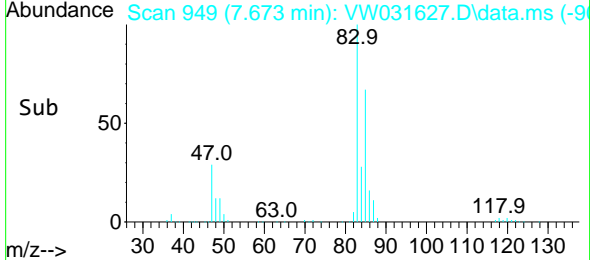
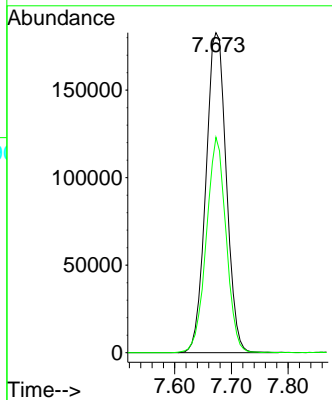


#25
 Chloroform
 Concen: 20.343 ug/L
 RT: 7.673 min Scan# 949
 Delta R.T. -0.006 min
 Lab File: VW031627.D
 Acq: 28 Jan 2025 18:42

Instrument :
 MSVOA_W
 ClientSampleId :

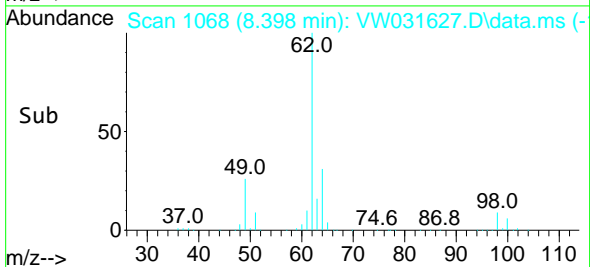
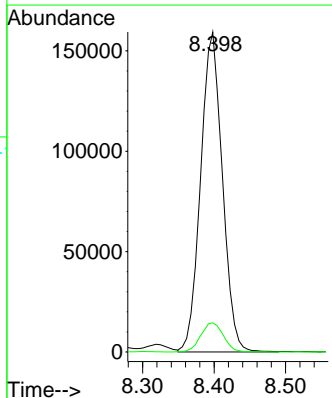
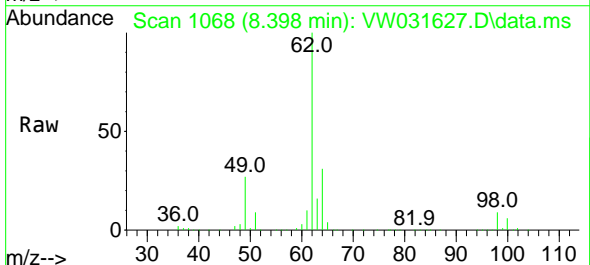


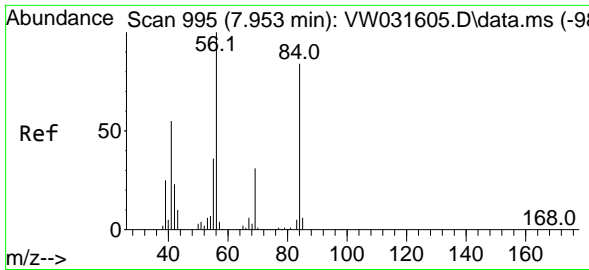
Tgt Ion: 83 Resp: 457135
 Ion Ratio Lower Upper
 83 100
 85 67.3 46.2 85.8



#27
 1,2-Dichloroethane
 Concen: 24.306 ug/L
 RT: 8.398 min Scan# 1068
 Delta R.T. -0.000 min
 Lab File: VW031627.D
 Acq: 28 Jan 2025 18:42

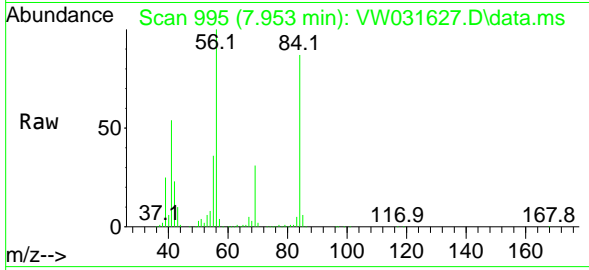
Tgt Ion: 62 Resp: 336402
 Ion Ratio Lower Upper
 62 100
 98 9.1 7.3 10.9





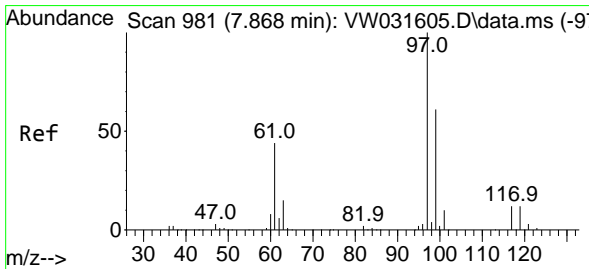
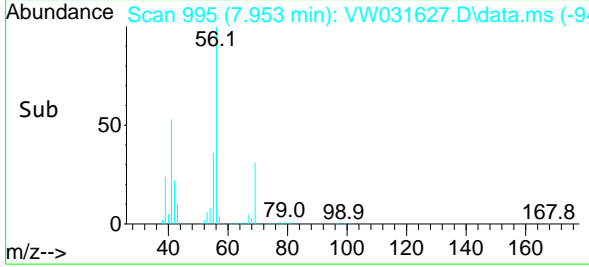
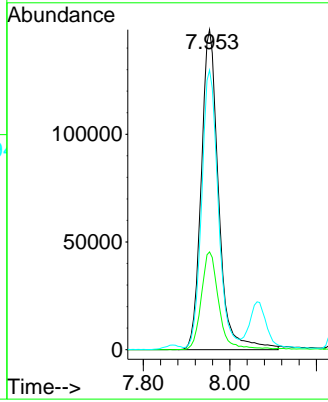
#29
 Cyclohexane
 Concen: 16.627 ug/L
 RT: 7.953 min Scan# 995
 Delta R.T. -0.000 min
 Lab File: VW031627.D
 Acq: 28 Jan 2025 18:42

Instrument : MSVOA_W
 ClientSampleId :



Tgt Ion: 56 Resp: 414142

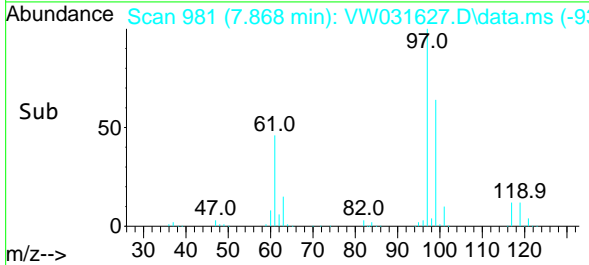
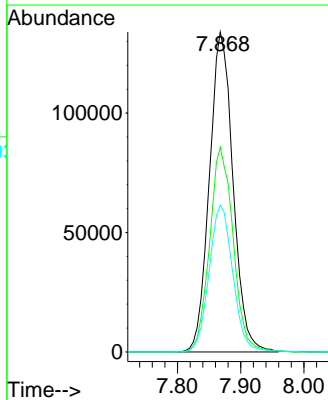
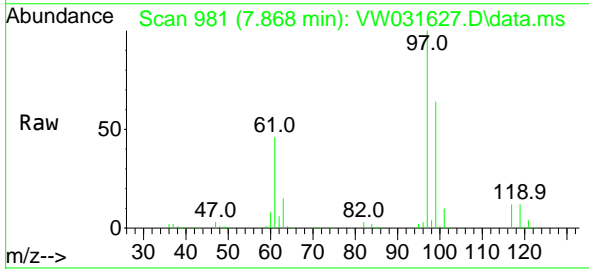
Ion	Ratio	Lower	Upper
56	100		
69	30.5	25.2	37.8
84	82.1	66.3	99.5

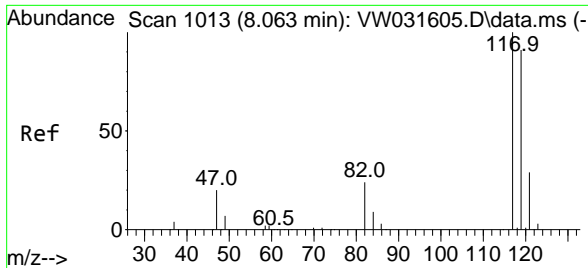


#30
 1,1,1-Trichloroethane
 Concen: 17.198 ug/L
 RT: 7.868 min Scan# 981
 Delta R.T. -0.006 min
 Lab File: VW031627.D
 Acq: 28 Jan 2025 18:42

Tgt Ion: 97 Resp: 346931

Ion	Ratio	Lower	Upper
97	100		
99	63.9	52.2	78.4
61	45.9	36.9	55.3

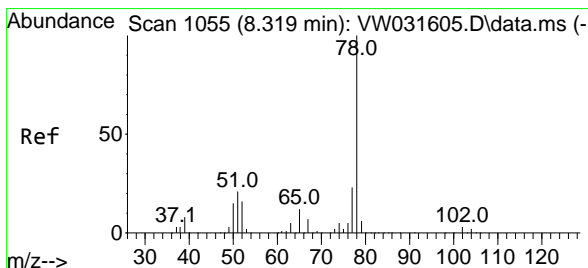
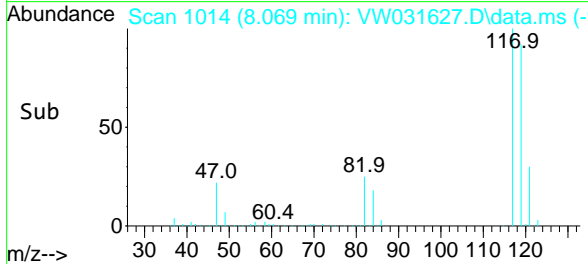
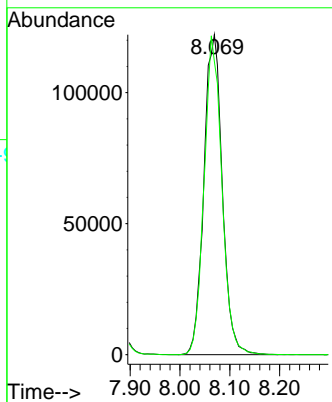
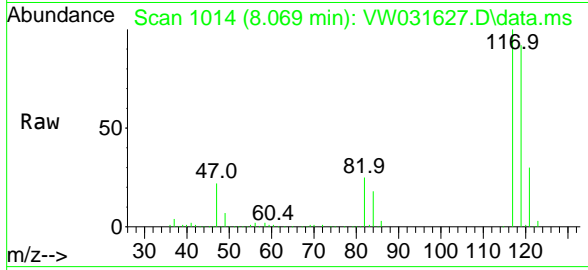




#31
 Carbon tetrachloride
 Concen: 17.524 ug/L
 RT: 8.069 min Scan# 1013
 Delta R.T. -0.000 min
 Lab File: VW031627.D
 Acq: 28 Jan 2025 18:42

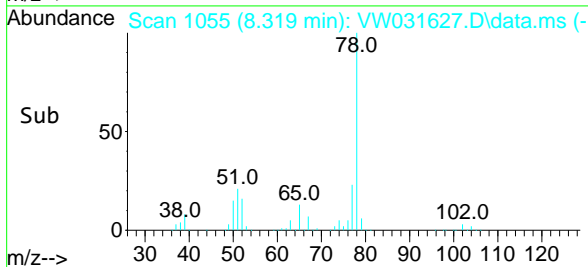
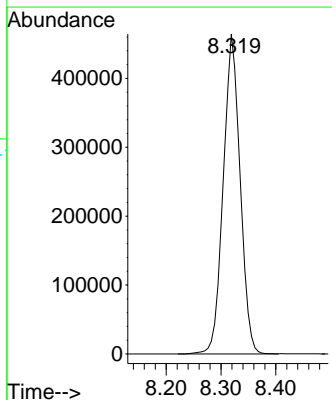
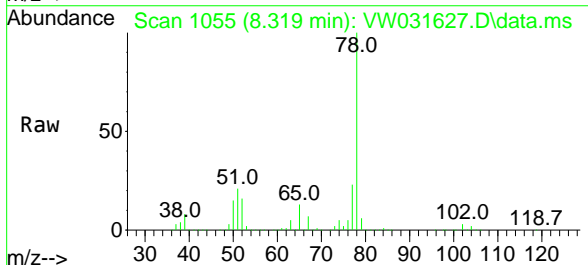
Instrument :
 MSVOA_W
 ClientSampleId :

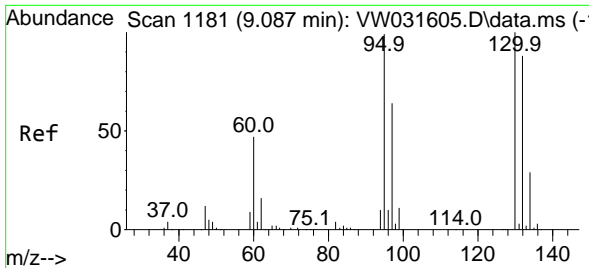
Tgt Ion:117 Resp: 313428
 Ion Ratio Lower Upper
 117 100
 119 96.1 77.4 116.0



#33
 Benzene
 Concen: 18.703 ug/L
 RT: 8.319 min Scan# 1055
 Delta R.T. -0.006 min
 Lab File: VW031627.D
 Acq: 28 Jan 2025 18:42

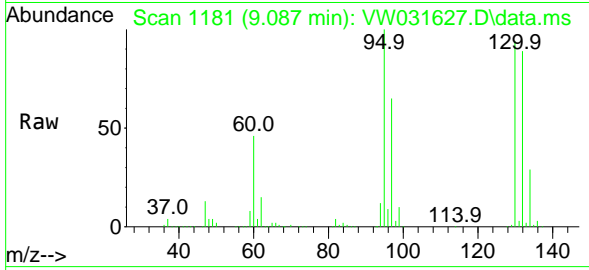
Tgt Ion: 78 Resp: 994740





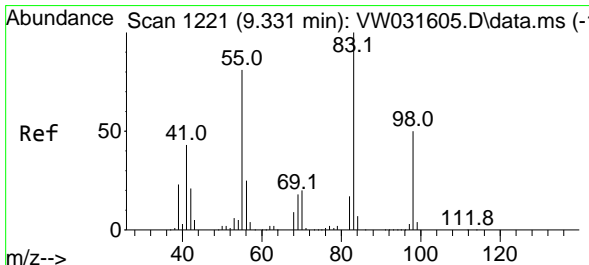
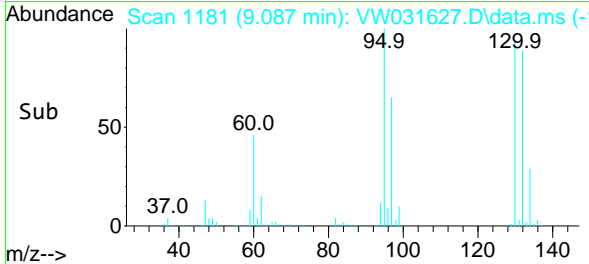
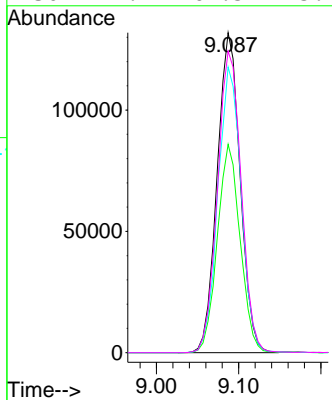
#34
 Trichloroethene
 Concen: 17.912 ug/L
 RT: 9.087 min Scan# 1181
 Delta R.T. -0.000 min
 Lab File: VW031627.D
 Acq: 28 Jan 2025 18:42

Instrument : MSVOA_W
 ClientSampleId :



Tgt Ion: 95 Resp: 256128

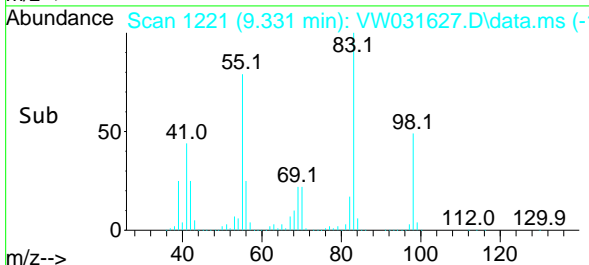
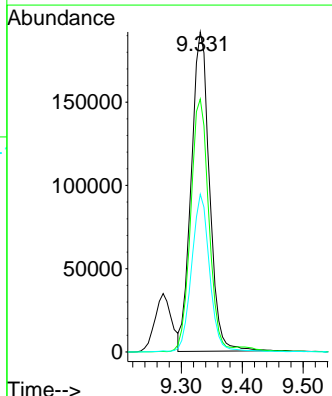
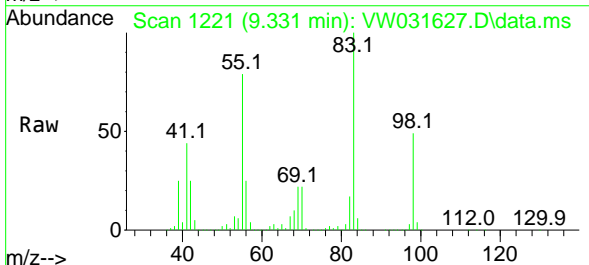
Ion	Ratio	Lower	Upper
95	100		
97	65.1	44.0	81.6
132	89.3	64.6	120.0
130	94.2	67.5	125.4

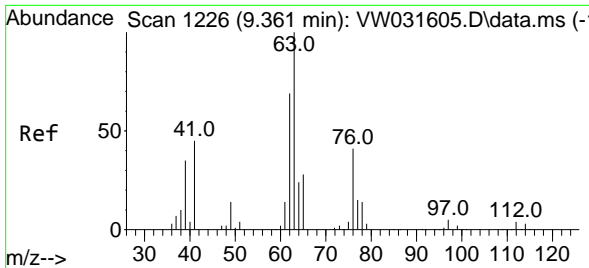


#35
 Methylcyclohexane
 Concen: 15.576 ug/L
 RT: 9.331 min Scan# 1221
 Delta R.T. -0.000 min
 Lab File: VW031627.D
 Acq: 28 Jan 2025 18:42

Tgt Ion: 83 Resp: 399313

Ion	Ratio	Lower	Upper
83	100		
55	78.5	63.4	95.2
98	47.9	38.8	58.2

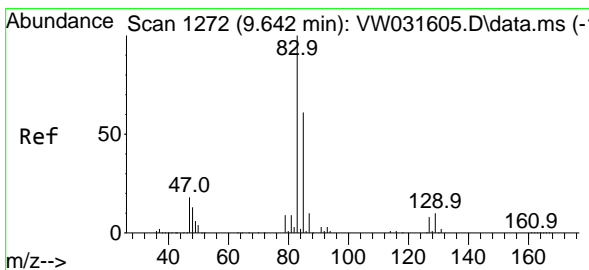
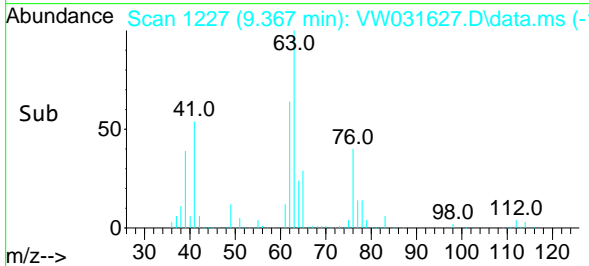
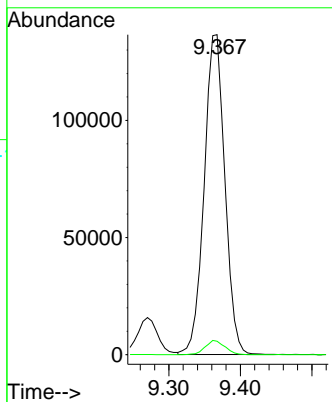
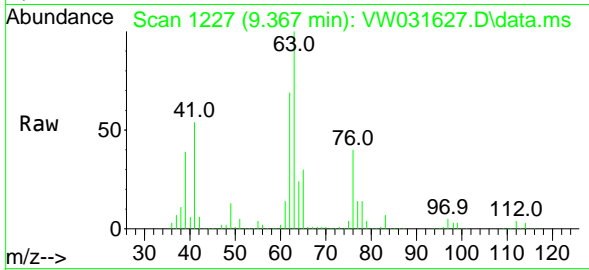




#37
 1,2-Dichloropropane
 Concen: 20.540 ug/L
 RT: 9.367 min Scan# 111
 Delta R.T. -0.000 min
 Lab File: VW031627.D
 Acq: 28 Jan 2025 18:42

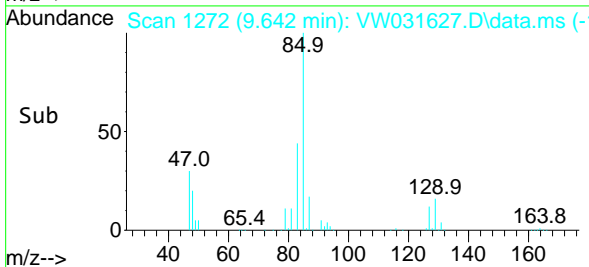
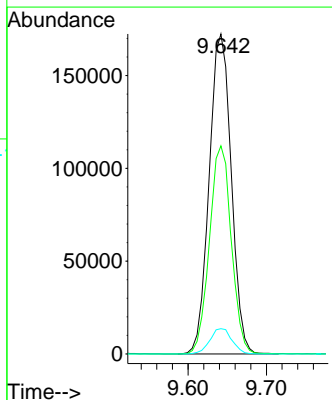
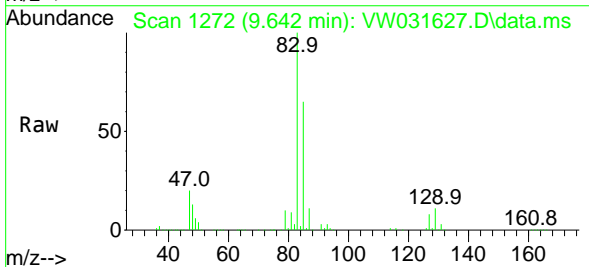
Instrument :
 MSVOA_W
 ClientSampleId :

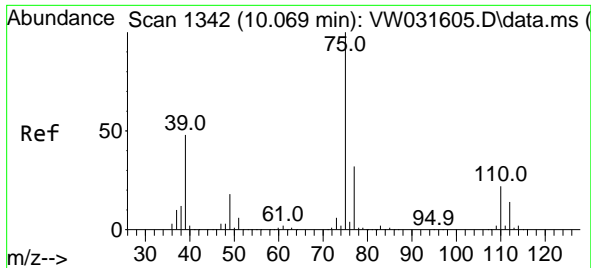
Tgt Ion: 63 Resp: 274567
 Ion Ratio Lower Upper
 63 100
 112 4.2 3.6 5.4



#38
 Bromodichloromethane
 Concen: 20.895 ug/L
 RT: 9.642 min Scan# 1272
 Delta R.T. -0.000 min
 Lab File: VW031627.D
 Acq: 28 Jan 2025 18:42

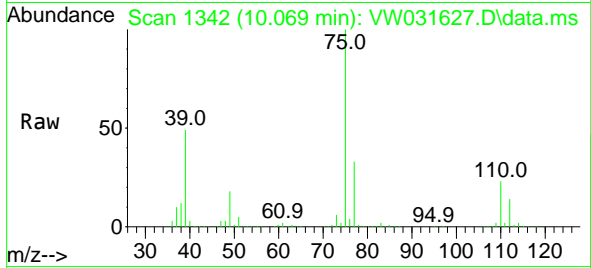
Tgt Ion: 83 Resp: 337863
 Ion Ratio Lower Upper
 83 100
 85 65.0 43.8 81.3
 127 7.9 6.2 9.4



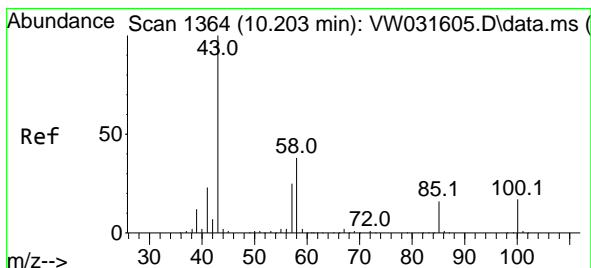
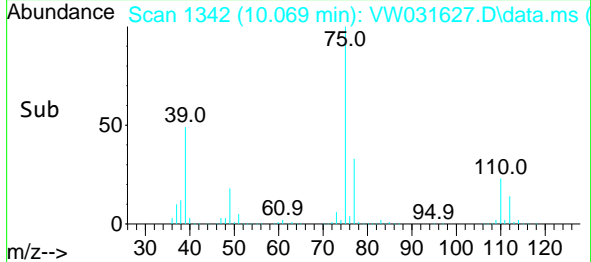
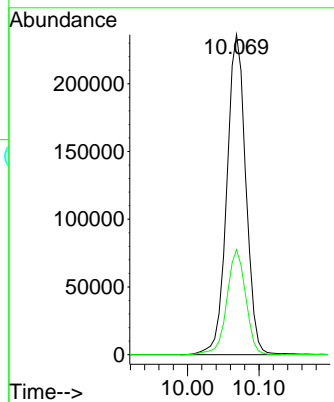


#39
 cis-1,3-Dichloropropene
 Concen: 20.693 ug/L
 RT: 10.069 min Scan# 11
 Delta R.T. -0.000 min
 Lab File: VW031627.D
 Acq: 28 Jan 2025 18:42

Instrument :
 MSVOA_W
 ClientSampleId :

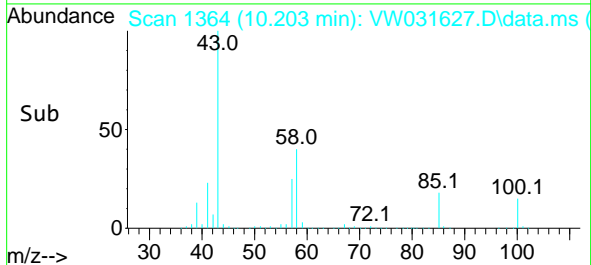
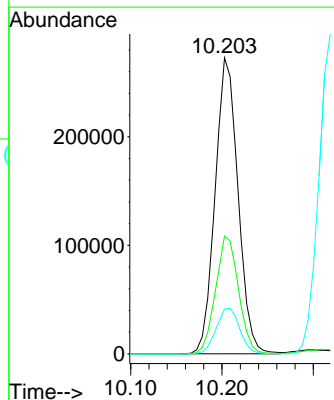
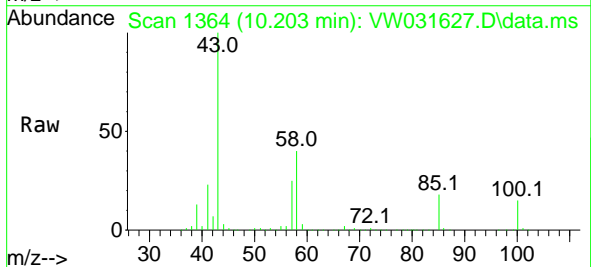


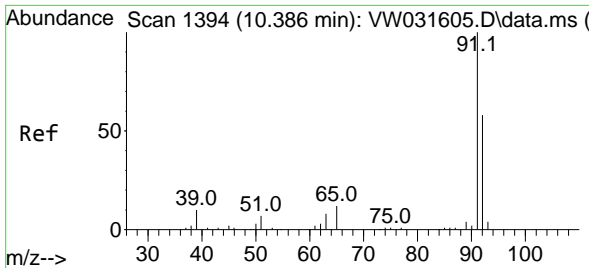
Tgt Ion: 75 Resp: 435139
 Ion Ratio Lower Upper
 75 100
 77 32.9 21.6 40.2



#40
 4-Methyl-2-pentanone
 Concen: 71.291 ug/L
 RT: 10.203 min Scan# 1364
 Delta R.T. -0.006 min
 Lab File: VW031627.D
 Acq: 28 Jan 2025 18:42

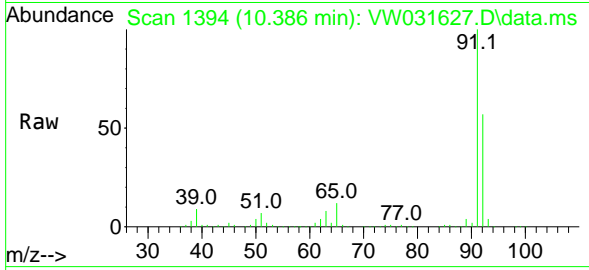
Tgt Ion: 43 Resp: 475686
 Ion Ratio Lower Upper
 43 100
 58 40.0 31.4 47.2
 100 15.9 12.3 18.5



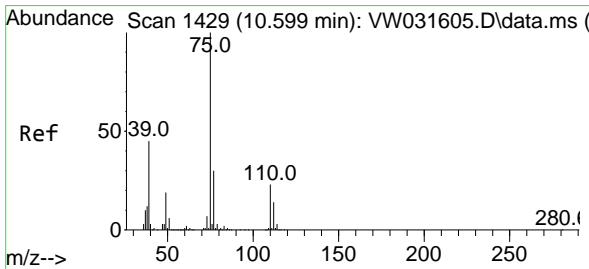
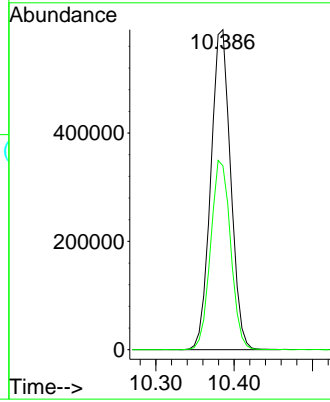
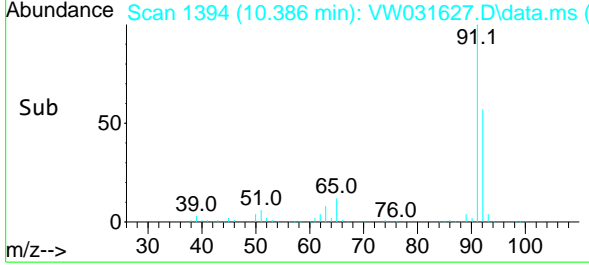


#42
 Toluene
 Concen: 18.729 ug/L
 RT: 10.386 min Scan# 1394
 Delta R.T. -0.000 min
 Lab File: VW031627.D
 Acq: 28 Jan 2025 18:42

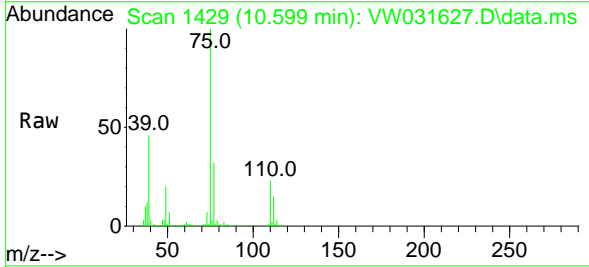
Instrument : MSVOA_W
 ClientSampleId :



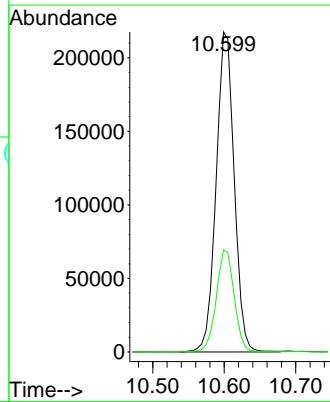
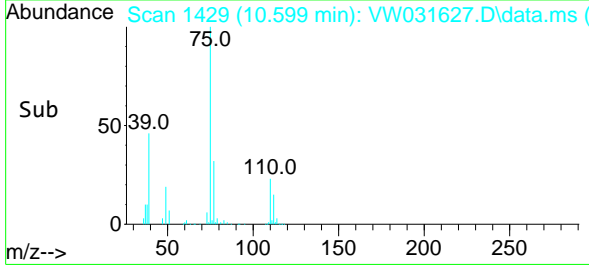
Tgt Ion: 91 Resp: 1041247
 Ion Ratio Lower Upper
 91 100
 92 57.4 40.6 75.4

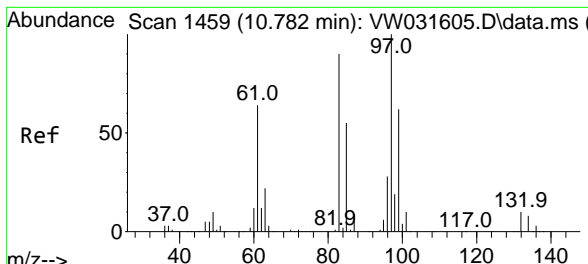


#44
 trans-1,3-Dichloropropene
 Concen: 22.735 ug/L
 RT: 10.599 min Scan# 1429
 Delta R.T. -0.006 min
 Lab File: VW031627.D
 Acq: 28 Jan 2025 18:42



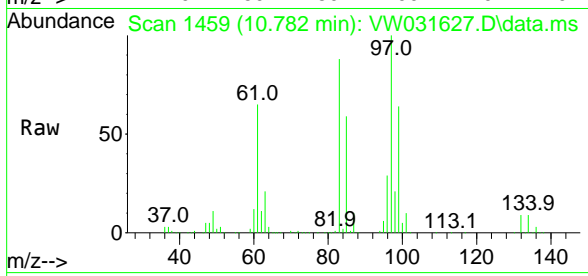
Tgt Ion: 75 Resp: 382151
 Ion Ratio Lower Upper
 75 100
 77 31.9 22.5 41.9





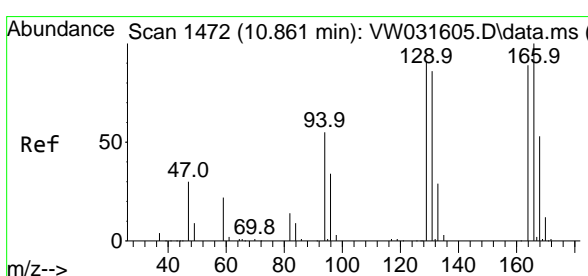
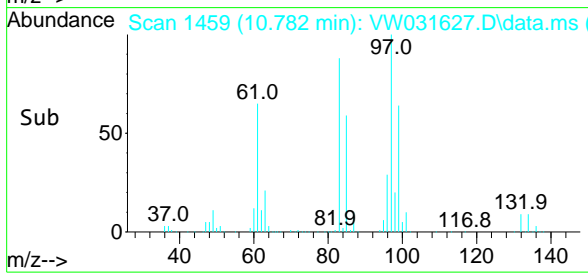
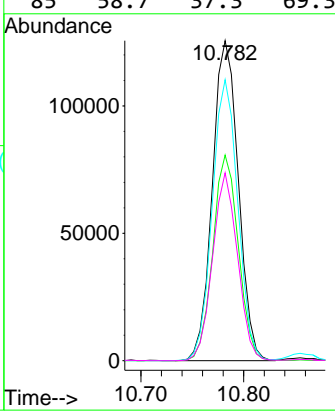
#45
 1,1,2-Trichloroethane
 Concen: 25.743 ug/L
 RT: 10.782 min Scan# 1459
 Delta R.T. -0.000 min
 Lab File: VW031627.D
 Acq: 28 Jan 2025 18:42

Instrument : MSVOA_W
 ClientSampleId :

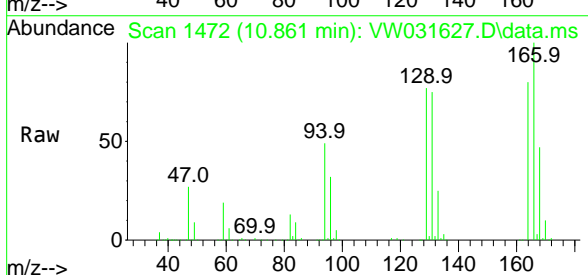


Tgt Ion: 97 Resp: 220576

Ion	Ratio	Lower	Upper
97	100		
99	64.2	42.6	79.2
83	87.8	59.6	110.8
85	58.7	37.3	69.3

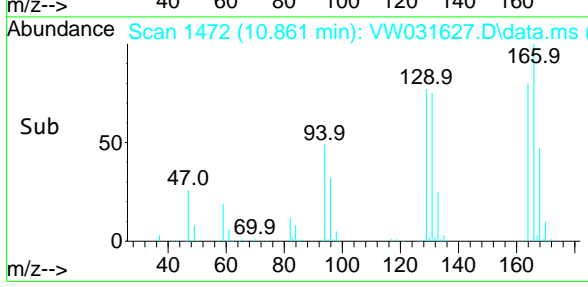
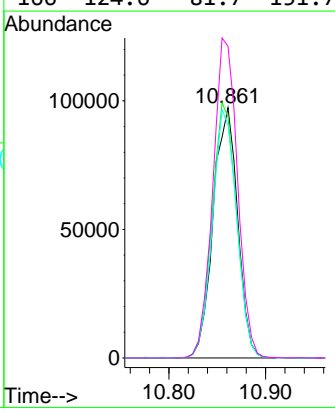


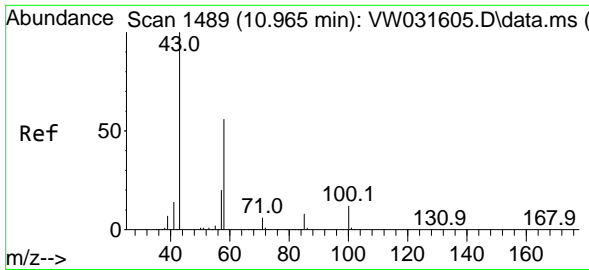
#46
 Tetrachloroethene
 Concen: 16.671 ug/L
 RT: 10.861 min Scan# 1472
 Delta R.T. -0.000 min
 Lab File: VW031627.D
 Acq: 28 Jan 2025 18:42



Tgt Ion: 164 Resp: 171061

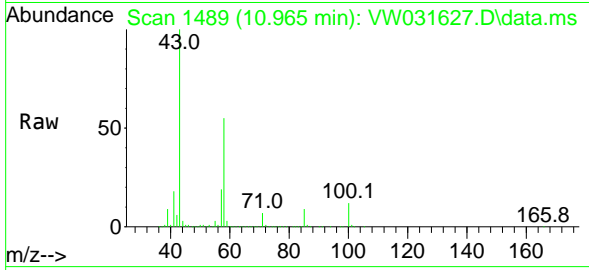
Ion	Ratio	Lower	Upper
164	100		
129	96.3	69.8	129.6
131	93.0	63.1	117.1
166	124.6	81.7	151.7



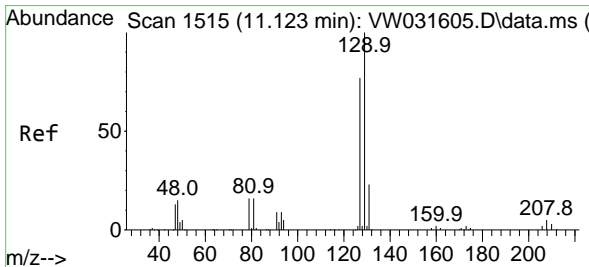
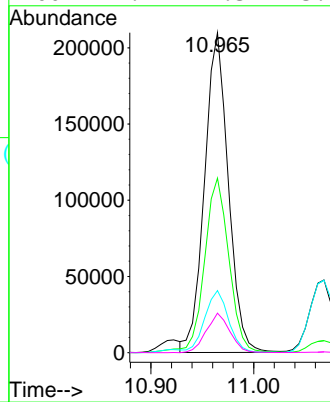
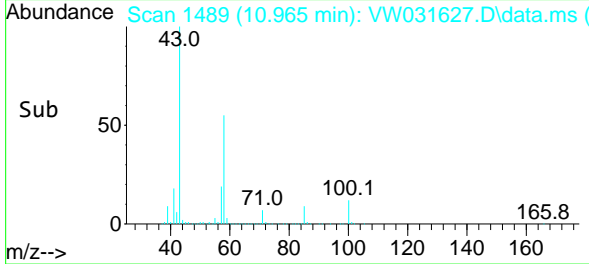


#48
 2-Hexanone
 Concen: 82.632 ug/L
 RT: 10.965 min Scan# 1489
 Delta R.T. -0.000 min
 Lab File: VW031627.D
 Acq: 28 Jan 2025 18:42

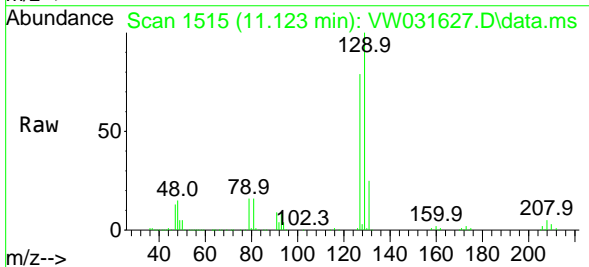
Instrument : MSVOA_W
 ClientSampleId :



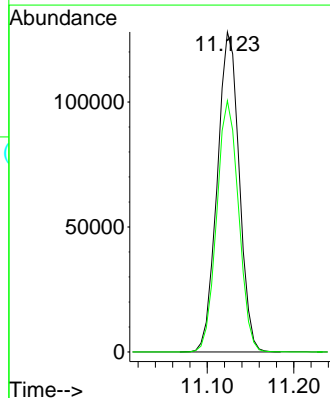
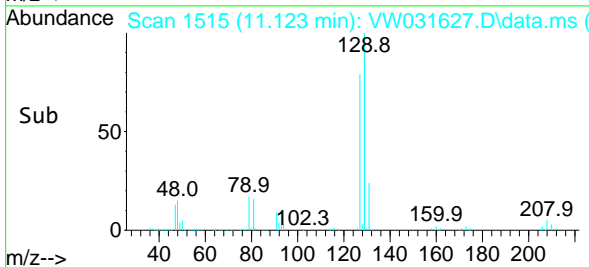
Tgt Ion: 43 Resp: 336932
 Ion Ratio Lower Upper
 43 100
 58 54.8 44.8 67.2
 57 19.6 15.6 23.4
 100 12.2 9.3 13.9

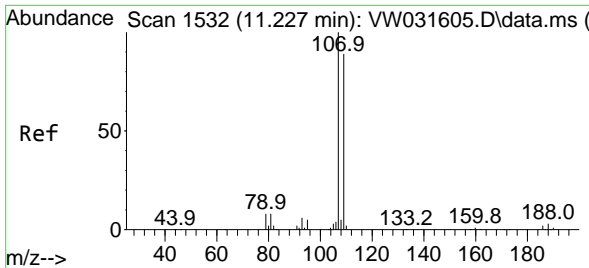


#49
 Dibromochloromethane
 Concen: 23.885 ug/L
 RT: 11.123 min Scan# 1515
 Delta R.T. -0.000 min
 Lab File: VW031627.D
 Acq: 28 Jan 2025 18:42



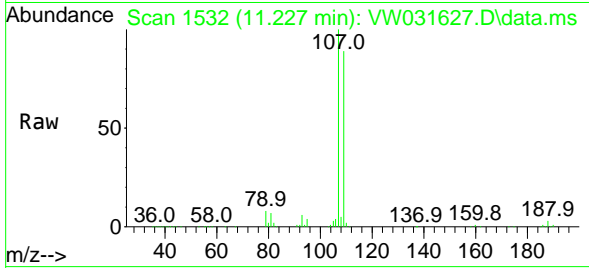
Tgt Ion: 129 Resp: 225179
 Ion Ratio Lower Upper
 129 100
 127 78.5 53.0 98.4



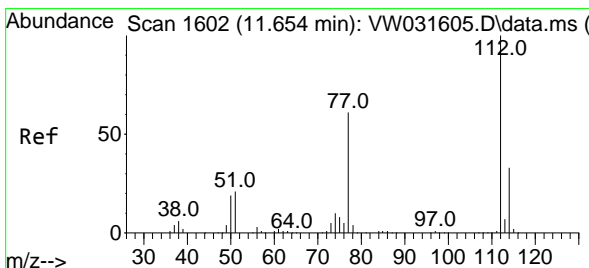
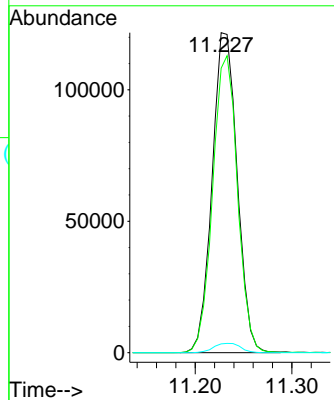
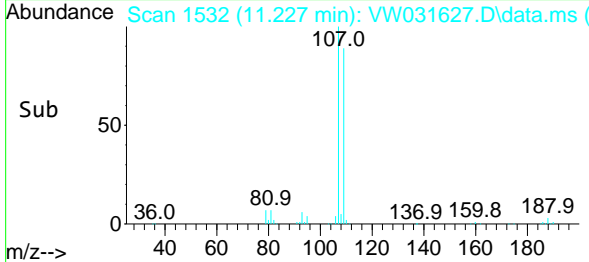


#50
 1,2-Dibromoethane
 Concen: 27.581 ug/L
 RT: 11.227 min Scan# 1532
 Delta R.T. -0.006 min
 Lab File: VW031627.D
 Acq: 28 Jan 2025 18:42

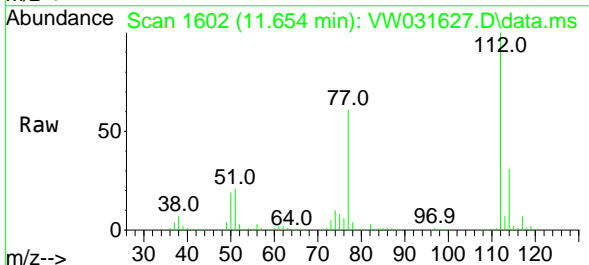
Instrument :
 MSVOA_W
 ClientSampleId :



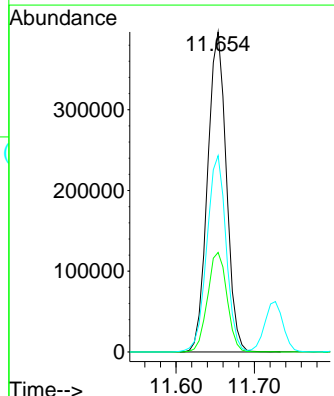
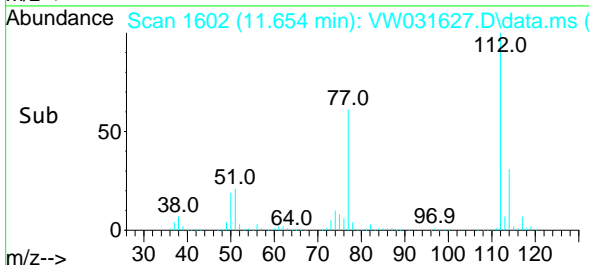
Tgt Ion:107 Resp: 219031
 Ion Ratio Lower Upper
 107 100
 109 88.9 63.8 118.4
 188 2.8 2.6 3.8

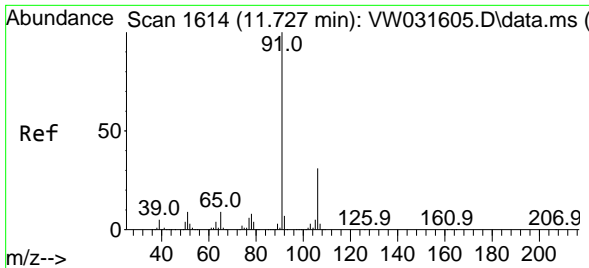


#51
 Chlorobenzene
 Concen: 19.179 ug/L
 RT: 11.654 min Scan# 1602
 Delta R.T. -0.000 min
 Lab File: VW031627.D
 Acq: 28 Jan 2025 18:42



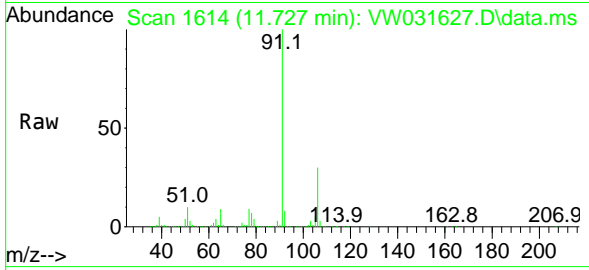
Tgt Ion:112 Resp: 658424
 Ion Ratio Lower Upper
 112 100
 114 31.1 22.0 40.8
 77 61.4 49.0 73.4



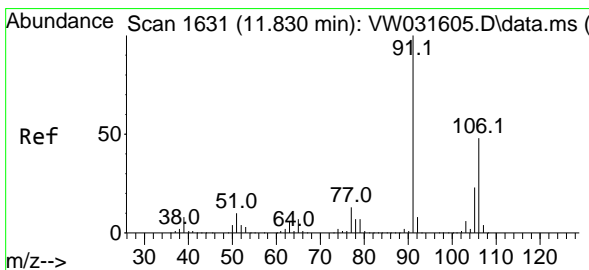
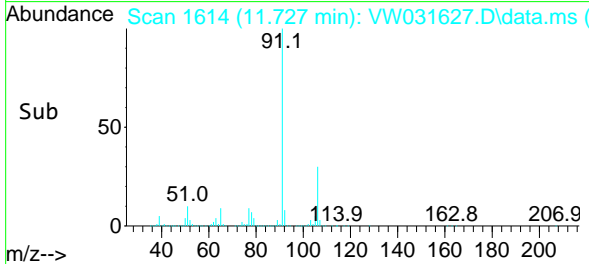
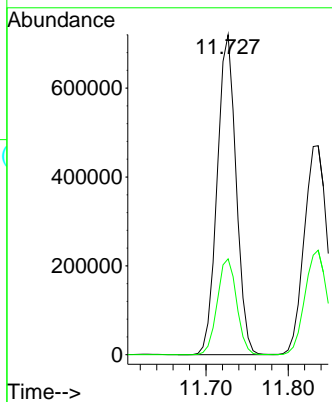


#52
 Ethylbenzene
 Concen: 18.079 ug/L
 RT: 11.727 min Scan# 1614
 Delta R.T. -0.000 min
 Lab File: VW031627.D
 Acq: 28 Jan 2025 18:42

Instrument : MSVOA_W
 ClientSampleId :

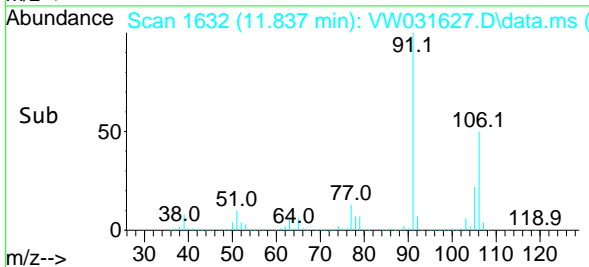
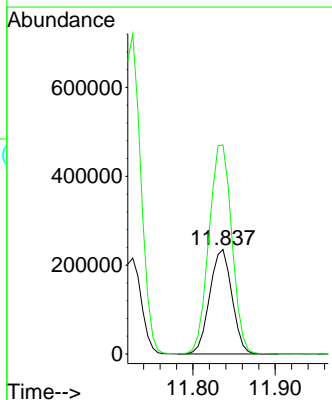
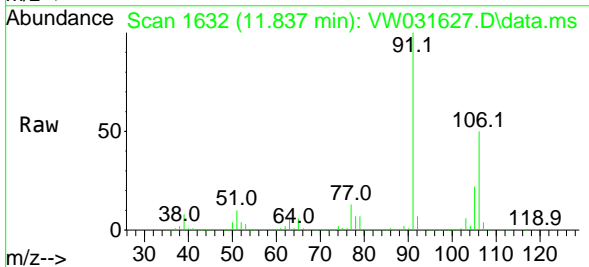


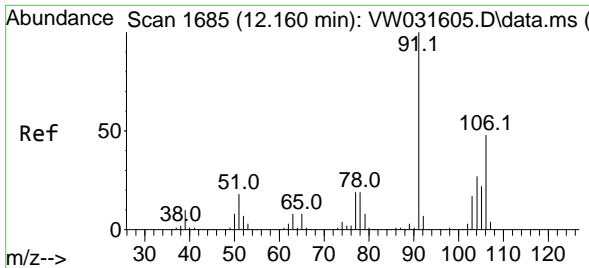
Tgt Ion: 91 Resp: 1153315
 Ion Ratio Lower Upper
 91 100
 106 29.9 22.3 41.3



#53
 m,p-Xylene
 Concen: 18.174 ug/L
 RT: 11.837 min Scan# 1632
 Delta R.T. -0.000 min
 Lab File: VW031627.D
 Acq: 28 Jan 2025 18:42

Tgt Ion: 106 Resp: 442037
 Ion Ratio Lower Upper
 106 100
 91 199.9 145.9 270.9

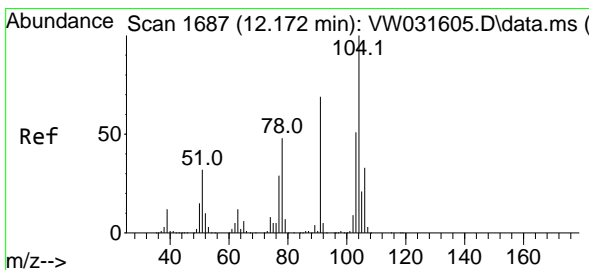
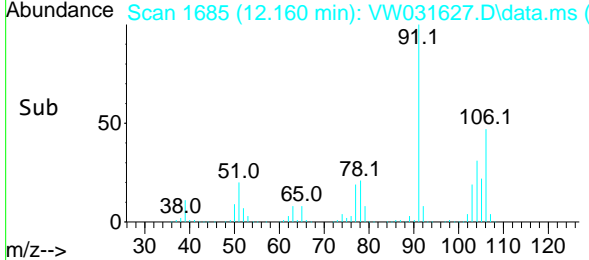
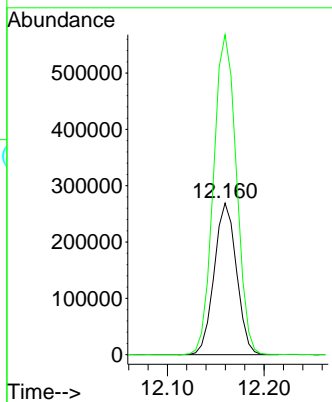
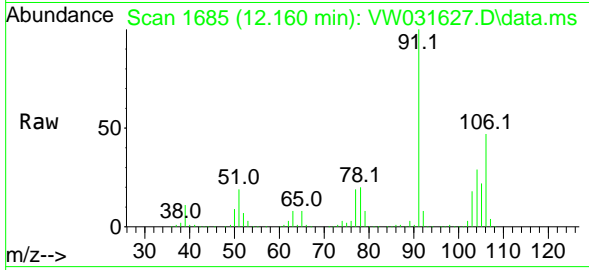




#54
 o-Xylene
 Concen: 19.055 ug/L
 RT: 12.160 min Scan# 1
 Delta R.T. -0.000 min
 Lab File: VW031627.D
 Acq: 28 Jan 2025 18:42

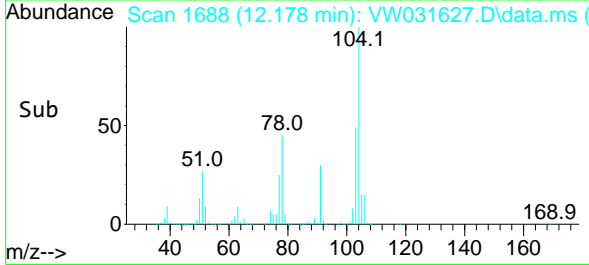
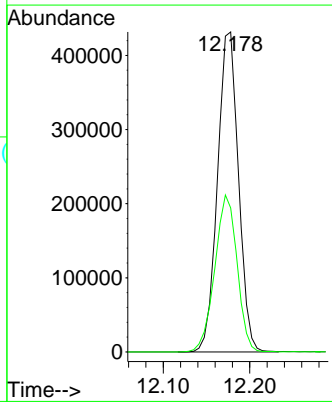
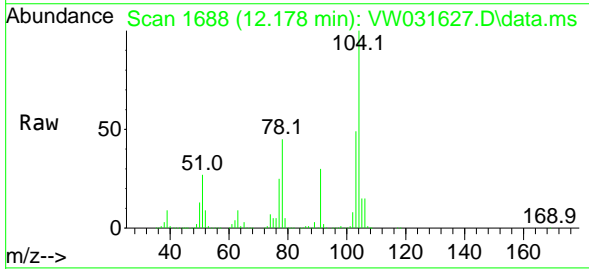
Instrument : MSVOA_W
 ClientSampleId :

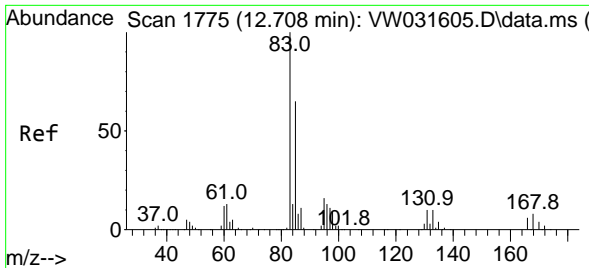
Tgt Ion:106 Resp: 430737
 Ion Ratio Lower Upper
 106 100
 91 211.2 152.9 284.1



#55
 Styrene
 Concen: 19.319 ug/L
 RT: 12.178 min Scan# 1688
 Delta R.T. -0.000 min
 Lab File: VW031627.D
 Acq: 28 Jan 2025 18:42

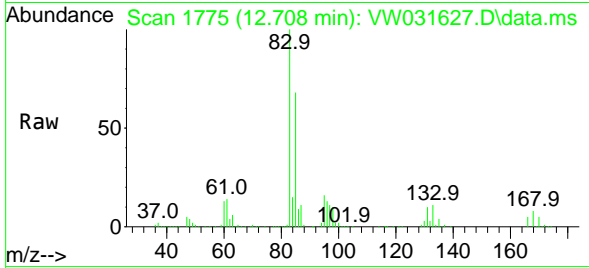
Tgt Ion:104 Resp: 726657
 Ion Ratio Lower Upper
 104 100
 78 45.0 32.0 59.4



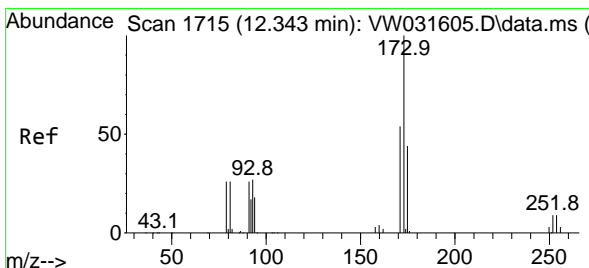
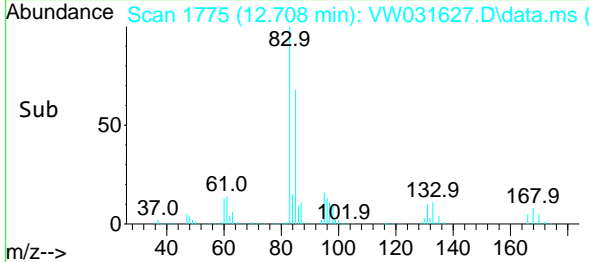
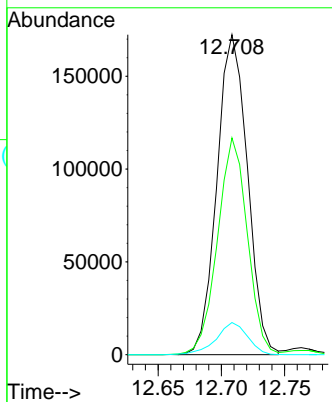


#57
 1,1,2,2-Tetrachloroethane
 Concen: 30.727 ug/L
 RT: 12.708 min Scan# 1775
 Delta R.T. -0.000 min
 Lab File: VW031627.D
 Acq: 28 Jan 2025 18:42

Instrument : MSVOA_W
 ClientSampleId :

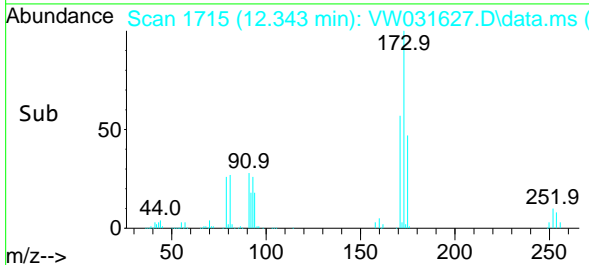
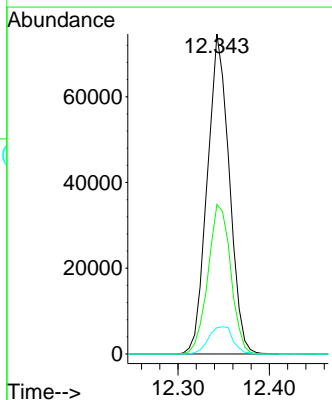
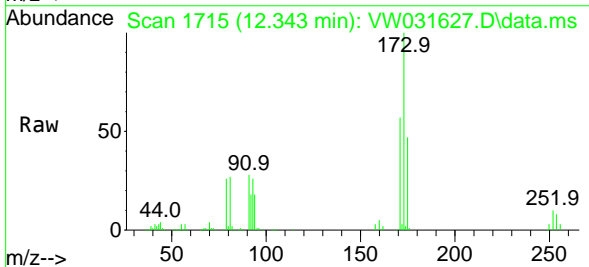


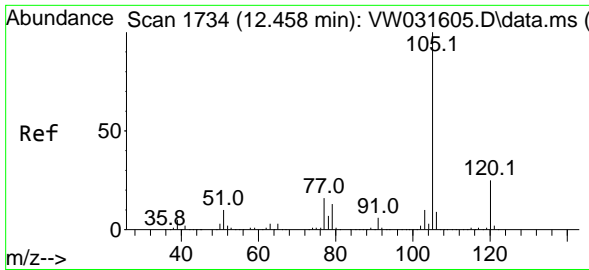
Tgt Ion: 83 Resp: 289295
 Ion Ratio Lower Upper
 83 100
 85 67.7 44.1 81.9
 131 10.1 7.4 11.0



#59
 Bromoform
 Concen: 25.477 ug/L
 RT: 12.343 min Scan# 1715
 Delta R.T. -0.006 min
 Lab File: VW031627.D
 Acq: 28 Jan 2025 18:42

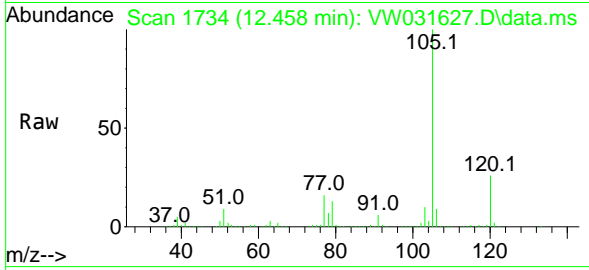
Tgt Ion: 173 Resp: 124452
 Ion Ratio Lower Upper
 173 100
 175 48.4 37.7 56.5
 254 9.4 7.1 10.7



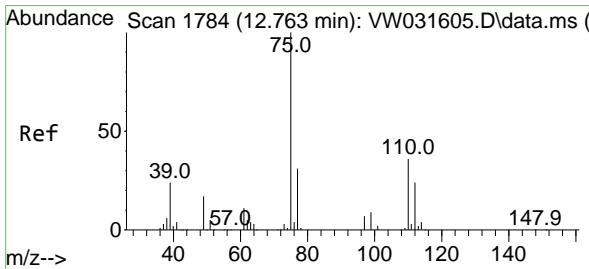
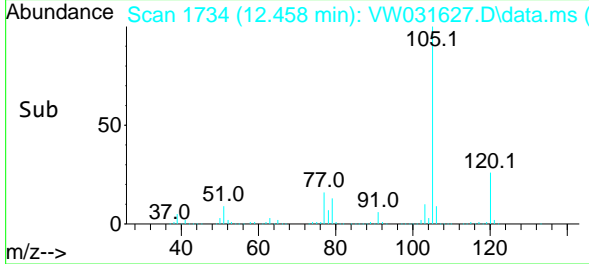
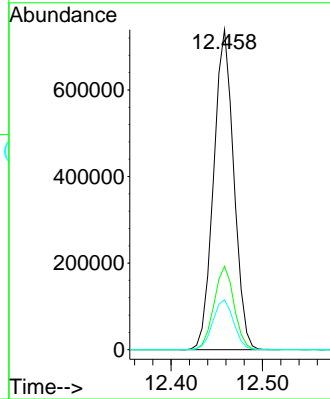


#60
 Isopropylbenzene
 Concen: 17.677 ug/L
 RT: 12.458 min Scan# 11
 Delta R.T. -0.000 min
 Lab File: VW031627.D
 Acq: 28 Jan 2025 18:42

Instrument :
 MSVOA_W
 ClientSampleId :

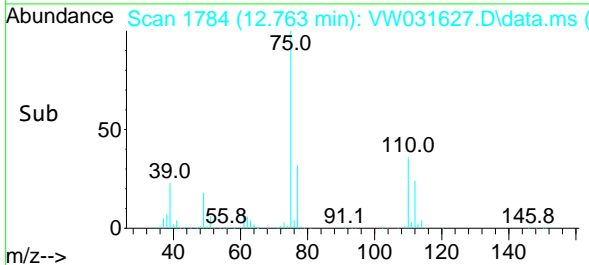
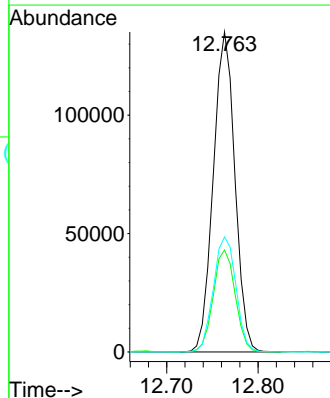
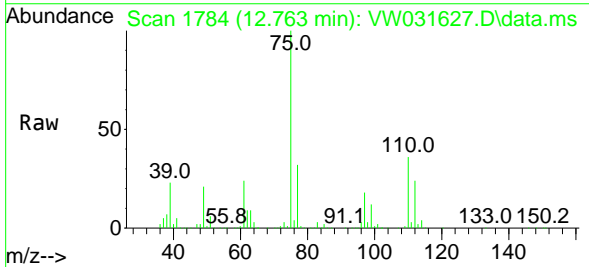


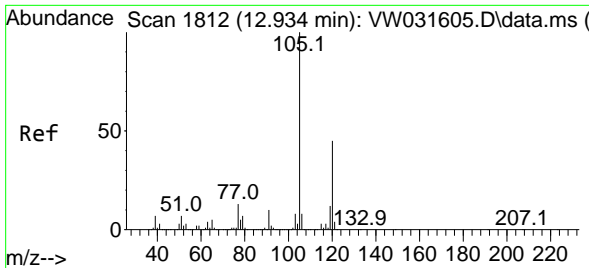
Tgt Ion:105 Resp: 1132057
 Ion Ratio Lower Upper
 105 100
 120 25.9 20.1 30.1
 77 16.1 12.7 19.1



#61
 1,2,3-Trichloropropane
 Concen: 32.251 ug/L
 RT: 12.763 min Scan# 1784
 Delta R.T. -0.000 min
 Lab File: VW031627.D
 Acq: 28 Jan 2025 18:42

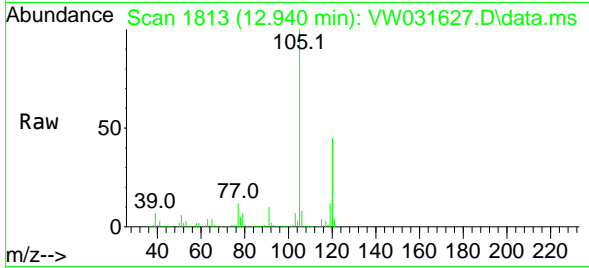
Tgt Ion: 75 Resp: 222032
 Ion Ratio Lower Upper
 75 100
 77 32.5 26.2 39.2
 110 37.5 29.6 44.4



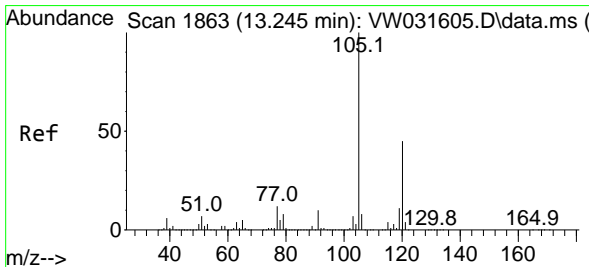
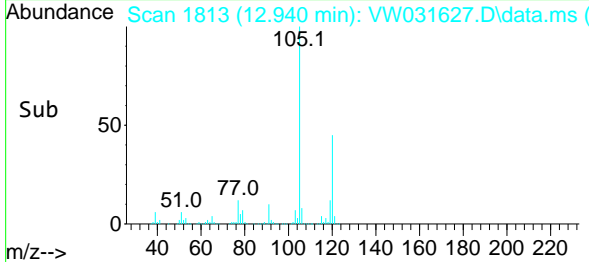
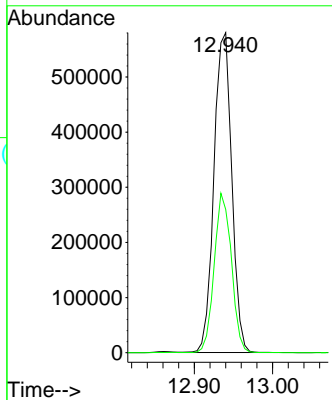


#62
 1,3,5-Trimethylbenzene
 Concen: 17.407 ug/L
 RT: 12.940 min Scan# 1812
 Delta R.T. -0.000 min
 Lab File: VW031627.D
 Acq: 28 Jan 2025 18:42

Instrument : MSVOA_W
 ClientSampleId :

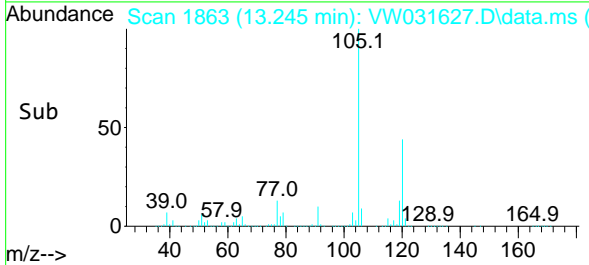
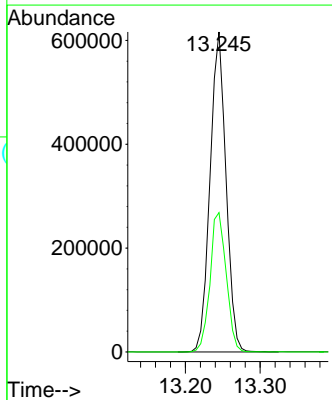
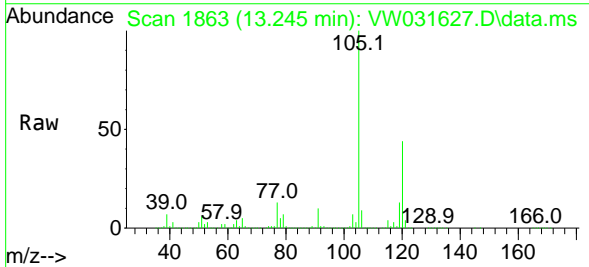


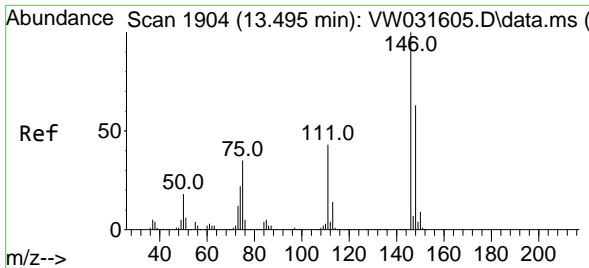
Tgt Ion:105 Resp: 917946
 Ion Ratio Lower Upper
 105 100
 120 48.1 37.6 56.4



#63
 1,2,4-Trimethylbenzene
 Concen: 17.784 ug/L
 RT: 13.245 min Scan# 1863
 Delta R.T. -0.000 min
 Lab File: VW031627.D
 Acq: 28 Jan 2025 18:42

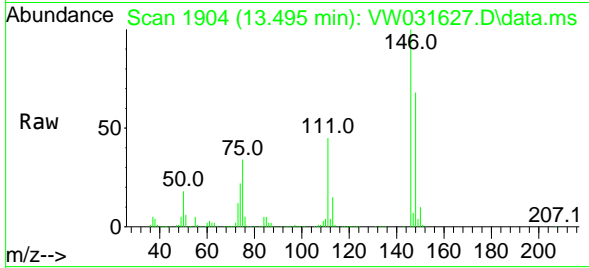
Tgt Ion:105 Resp: 912759
 Ion Ratio Lower Upper
 105 100
 120 44.3 36.3 54.5



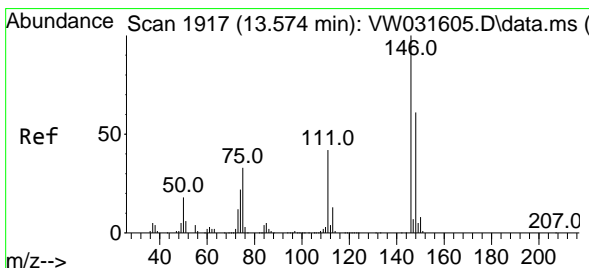
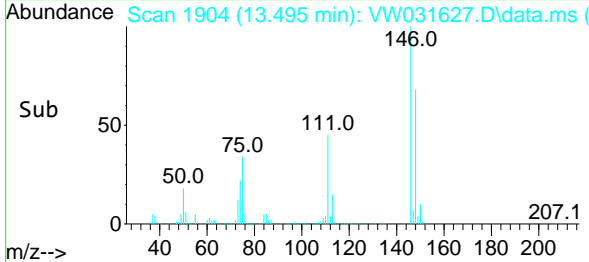
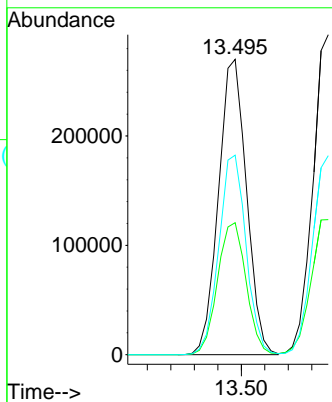


#64
 1,3-Dichlorobenzene
 Concen: 17.619 ug/L
 RT: 13.495 min Scan# 1904
 Delta R.T. -0.000 min
 Lab File: VW031627.D
 Acq: 28 Jan 2025 18:42

Instrument : MSVOA_W
 ClientSampleId :

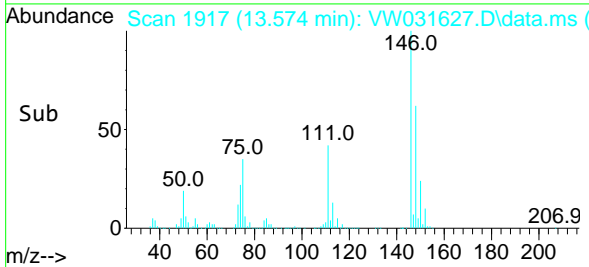
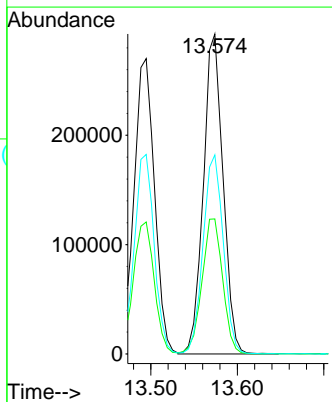
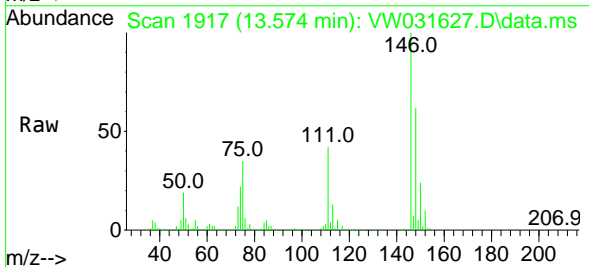


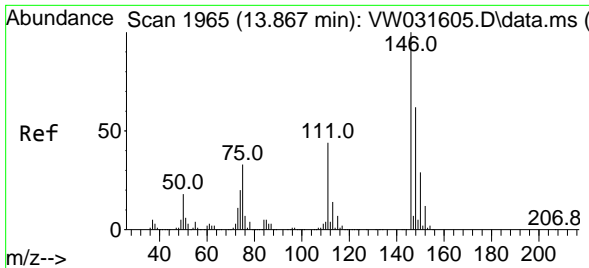
Tgt Ion:146 Resp: 447527
 Ion Ratio Lower Upper
 146 100
 111 44.7 30.4 56.5
 148 67.5 42.1 78.1



#65
 1,4-Dichlorobenzene
 Concen: 18.408 ug/L
 RT: 13.574 min Scan# 1917
 Delta R.T. -0.000 min
 Lab File: VW031627.D
 Acq: 28 Jan 2025 18:42

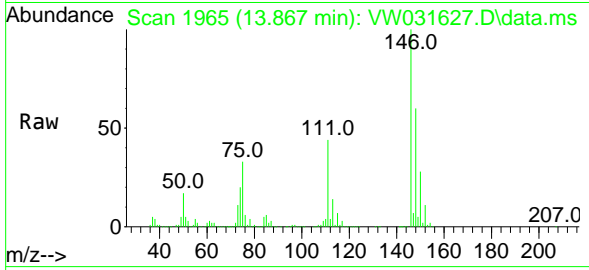
Tgt Ion:146 Resp: 462450
 Ion Ratio Lower Upper
 146 100
 111 42.2 28.5 52.9
 148 62.2 45.4 84.4



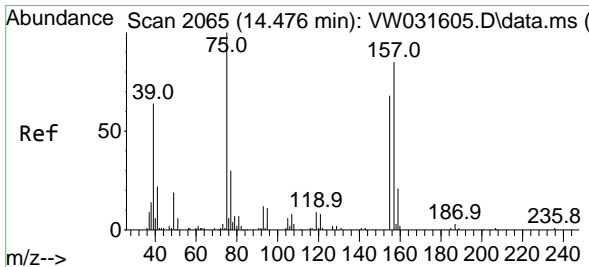
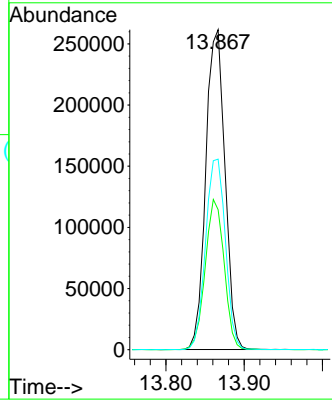
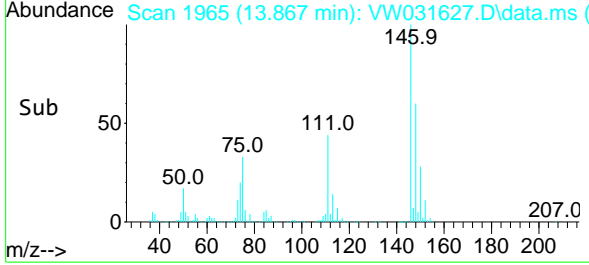


#67
 1,2-Dichlorobenzene
 Concen: 20.492 ug/L
 RT: 13.867 min Scan# 1965
 Delta R.T. 0.006 min
 Lab File: VW031627.D
 Acq: 28 Jan 2025 18:42

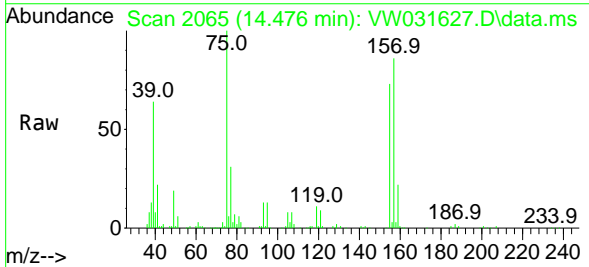
Instrument : MSVOA_W
 ClientSampleId :



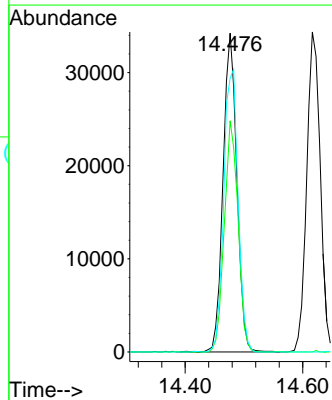
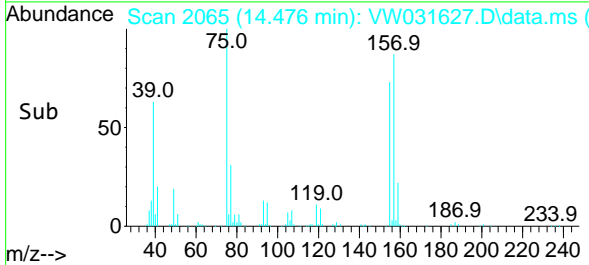
Tgt Ion:146 Resp: 444505
 Ion Ratio Lower Upper
 146 100
 111 43.8 36.6 55.0
 148 59.6 51.0 76.4

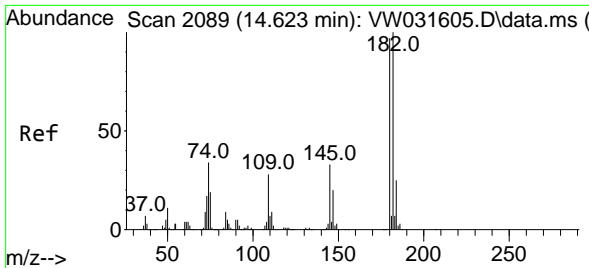


#68
 1,2-Dibromo-3-chloropropane
 Concen: 36.288 ug/L
 RT: 14.476 min Scan# 2065
 Delta R.T. -0.000 min
 Lab File: VW031627.D
 Acq: 28 Jan 2025 18:42



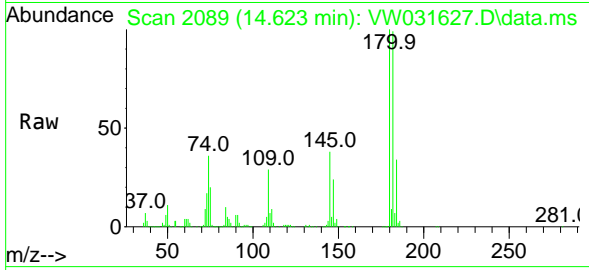
Tgt Ion: 75 Resp: 55852
 Ion Ratio Lower Upper
 75 100
 155 72.6 51.0 76.4
 157 85.9 70.2 105.2



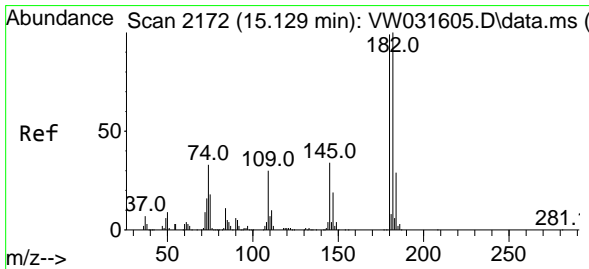
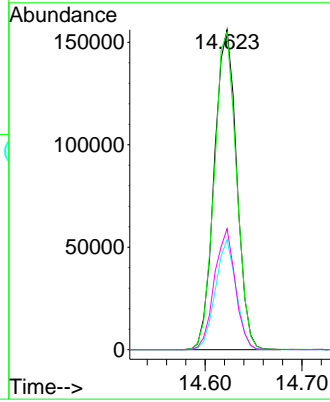
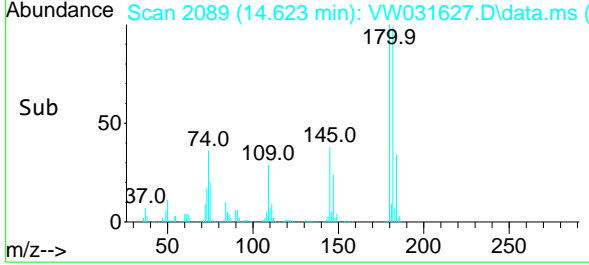


#69
 1,3,5-Trichlorobenzene
 Concen: 14.556 ug/L
 RT: 14.623 min Scan# 2089
 Delta R.T. -0.000 min
 Lab File: VW031627.D
 Acq: 28 Jan 2025 18:42

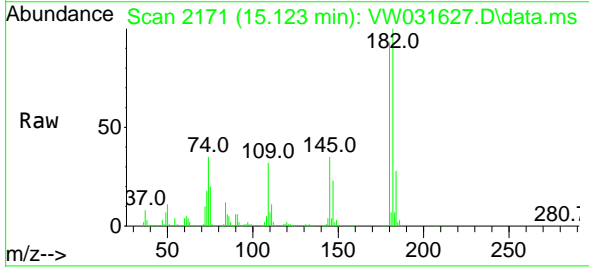
Instrument :
 MSVOA_W
 ClientSampleId :



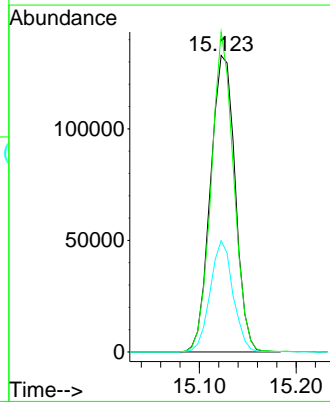
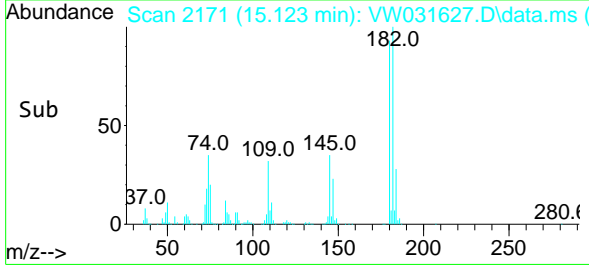
Tgt Ion:180 Resp: 250558
 Ion Ratio Lower Upper
 180 100
 182 98.4 74.2 111.4
 184 31.9 23.0 34.4
 145 35.4 26.5 39.7

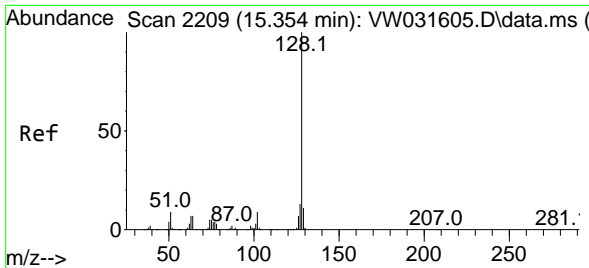


#70
 1,2,4-trichlorobenzene
 Concen: 17.224 ug/L
 RT: 15.123 min Scan# 2171
 Delta R.T. -0.000 min
 Lab File: VW031627.D
 Acq: 28 Jan 2025 18:42



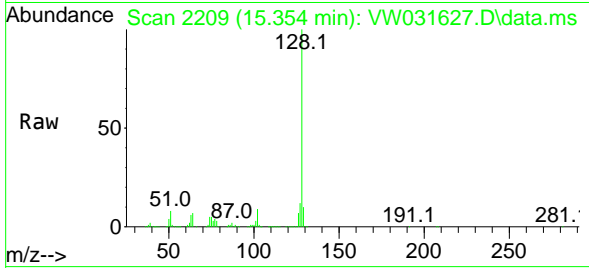
Tgt Ion:180 Resp: 236155
 Ion Ratio Lower Upper
 180 100
 182 98.0 77.7 116.5
 145 34.6 26.6 39.8



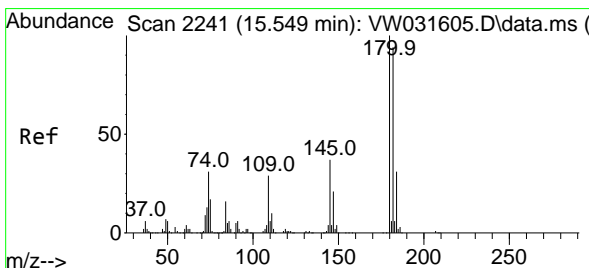
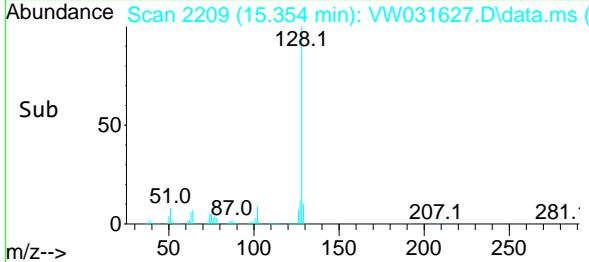
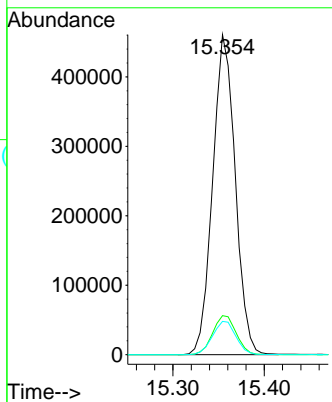


#71
 Naphthalene
 Concen: 30.745 ug/L
 RT: 15.354 min Scan# 2209
 Delta R.T. -0.000 min
 Lab File: VW031627.D
 Acq: 28 Jan 2025 18:42

Instrument : MSVOA_W
 ClientSampled :



Tgt Ion:128 Resp: 790405
 Ion Ratio Lower Upper
 128 100
 127 12.7 10.4 15.6
 129 10.9 8.7 13.1



#72
 1,2,3-Trichlorobenzene
 Concen: 19.906 ug/L
 RT: 15.549 min Scan# 2241
 Delta R.T. -0.000 min
 Lab File: VW031627.D
 Acq: 28 Jan 2025 18:42

Tgt Ion:180 Resp: 229863
 Ion Ratio Lower Upper
 180 100
 182 92.9 76.9 115.3
 145 35.3 30.1 45.1

