

Data File : VW008458.D
 Acq On : 30 Jan 2019 11:51
 Operator : SY/VA
 Sample : VW0130SBSD01
 Misc : 5.00G/5ML/MSVOA_W/SOIL
 ALS Vial : 5 Sample Multiplier: 1

Instrument :
 MSVOA_W
 ClientSampleId :
 VW0130SBSD01

Quant Time: Jan 31 00:22:58 2019
 Quant Method : Z:\VOASRV\HPCHEM1\MSVOA_W\METHOD\82W012419S.M
 Quant Title : SW846 8260
 QLast Update : Fri Jan 25 11:07:41 2019
 Response via : Initial Calibration

Internal Standards	R.T.	QIon	Response	Conc	Units	Dev(Min)
1) Pentafluorobenzene	7.95	168	438696	50.00	ug/l	0.00
34) 1,4-Difluorobenzene	8.84	114	660161	50.00	ug/l	0.00
63) Chlorobenzene-d5	11.63	117	584654	50.00	ug/l	0.00
72) 1,4-Dichlorobenzene-d4	13.56	152	299684	50.00	ug/l	0.00

System Monitoring Compounds

33) 1,2-Dichloroethane-d4	8.31	65	210300	48.80	ug/l	0.00
Spiked Amount	50.000		Recovery	=	97.60%	
35) Dibromofluoromethane	7.88	113	210364	54.50	ug/l	0.00
Spiked Amount	50.000		Recovery	=	109.00%	
50) Toluene-d8	10.32	98	811025	52.39	ug/l	0.00
Spiked Amount	50.000		Recovery	=	104.78%	
62) 4-Bromofluorobenzene	12.62	95	297431	49.99	ug/l	0.00
Spiked Amount	50.000		Recovery	=	99.98%	

Target Compounds

						Qvalue
2) Dichlorodifluoromethane	2.01	85	32879	15.378	ug/l	100
3) Chloromethane	2.21	50	51152	14.284	ug/l	95
4) Vinyl Chloride	2.37	62	75614	16.588	ug/l	100
5) Bromomethane	2.78	94	55980	19.039	ug/l	98
6) Chloroethane	2.92	64	51320	18.409	ug/l	97
7) Trichlorofluoromethane	3.25	101	59226	18.251	ug/l	93
8) Diethyl Ether	3.67	74	35689	16.313	ug/l	99
9) 1,1,2-Trichlorotrifluoroet	4.06	101	71830	18.103	ug/l	96
10) Methyl Iodide	4.26	142	114195	18.221	ug/l	98
11) Tert butyl alcohol	5.17	59	29019	83.632	ug/l	# 89
12) 1,1-Dichloroethene	4.03	96	69178	17.228	ug/l	97
13) Acrolein	3.89	56	29700	99.575	ug/l	100
14) Allyl chloride	4.66	41	120250	15.770	ug/l	97
15) Acrylonitrile	5.37	53	77218	81.738	ug/l	100
16) Acetone	4.12	43	79374	82.013	ug/l	97
17) Carbon Disulfide	4.37	76	213679	16.662	ug/l	100
18) Methyl Acetate	4.67	43	40633	15.741	ug/l	93
19) Methyl tert-butyl Ether	5.43	73	115720	17.418	ug/l	95
20) Methylene Chloride	4.91	84	81331	18.233	ug/l	95
21) trans-1,2-Dichloroethene	5.41	96	77595	17.188	ug/l	98
22) Diisopropyl ether	6.31	45	230587	15.956	ug/l	96
23) Vinyl Acetate	6.25	43	665157	77.950	ug/l	98
24) 1,1-Dichloroethane	6.21	63	135241	16.533	ug/l	98
25) 2-Butanone	7.17	43	106723	79.390	ug/l	97
26) 2,2-Dichloropropane	7.16	77	96237	17.405	ug/l	100
27) cis-1,2-Dichloroethene	7.17	96	84394	17.153	ug/l	97
28) Bromochloromethane	7.51	49	65015	17.305	ug/l	92
29) Tetrahydrofuran	7.53	42	66657	78.247	ug/l	94
30) Chloroform	7.68	83	136224	16.931	ug/l	97
31) Cyclohexane	7.95	56	135051	15.967	ug/l	93
32) 1,1,1-Trichloroethane	7.87	97	122334	17.604	ug/l	98
36) 1,1-Dichloropropene	8.08	75	111658	17.906	ug/l	98
37) Ethyl Acetate	7.25	43	48448	17.560	ug/l	97
38) Carbon Tetrachloride	8.07	117	115148	18.350	ug/l	98

Data File : VW008458.D
 Acq On : 30 Jan 2019 11:51
 Operator : SY/VA
 Sample : VW0130SBSD01
 Misc : 5.00G/5ML/MSVOA_W/SOIL
 ALS Vial : 5 Sample Multiplier: 1

Instrument :
 MSVOA_W
 ClientSampleId :
 VW0130SBSD01

Quant Time: Jan 31 00:22:58 2019
 Quant Method : Z:\VOASRV\HPCHEM1\MSVOA_W\METHOD\82W012419S.M
 Quant Title : SW846 8260
 QLast Update : Fri Jan 25 11:07:41 2019
 Response via : Initial Calibration

Internal Standards	R.T.	QIon	Response	Conc	Units	Dev(Min)
39) Methylcyclohexane	9.34	83	145683	17.784	ug/l	95
40) Benzene	8.32	78	301292	17.412	ug/l	100
41) Methacrylonitrile	7.48	41	27305	16.714	ug/l	96
42) 1,2-Dichloroethane	8.40	62	87160	17.381	ug/l	97
43) Isopropyl Acetate	8.43	43	94908	16.558	ug/l	96
44) Trichloroethene	9.09	130	88711	18.852	ug/l	96
45) 1,2-Dichloropropane	9.37	63	74012	17.154	ug/l	96
46) Dibromomethane	9.46	93	39307	17.713	ug/l	95
47) Bromodichloromethane	9.65	83	103541	17.640	ug/l	100
48) Methyl methacrylate	9.44	41	44759	15.970	ug/l	97
49) 1,4-Dioxane	9.45	88	13623	363.182	ug/l	97
51) 4-Methyl-2-Pentanone	10.21	43	231687	81.819	ug/l	100
52) Toluene	10.39	92	199935	17.503	ug/l	100
53) t-1,3-Dichloropropene	10.60	75	104985	16.809	ug/l	99
54) cis-1,3-Dichloropropene	10.07	75	121407	17.129	ug/l	94
55) 1,1,2-Trichloroethane	10.79	97	55039	17.881	ug/l	94
56) Ethyl methacrylate	10.65	69	70265	16.291	ug/l	96
57) 1,3-Dichloropropane	10.93	76	94542	17.145	ug/l	100
58) 2-Chloroethyl Vinyl ether	9.93	63	181451	86.588	ug/l	97
59) 2-Hexanone	10.97	43	166288	83.183	ug/l	100
60) Dibromochloromethane	11.13	129	69551	17.583	ug/l	98
61) 1,2-Dibromoethane	11.24	107	53965	17.682	ug/l	100
64) Tetrachloroethene	10.86	164	74394	18.794	ug/l	96
65) Chlorobenzene	11.66	112	218343	18.295	ug/l	98
66) 1,1,1,2-Tetrachloroethane	11.73	131	78086	18.287	ug/l	98
67) Ethyl Benzene	11.73	91	386964	17.639	ug/l	99
68) m/p-Xylenes	11.84	106	301381	35.407	ug/l	98
69) o-Xylene	12.17	106	145458	17.985	ug/l	94
70) Styrene	12.18	104	227347	17.018	ug/l	98
71) Bromoform	12.35	173	42393	17.645	ug/l #	99
73) Isopropylbenzene	12.47	105	398284	17.827	ug/l	100
74) N-amyl acetate	12.27	43	90694	15.757	ug/l	97
75) 1,1,2,2-Tetrachloroethane	12.71	83	62227	17.592	ug/l	99
76) 1,2,3-Trichloropropane	12.77	75	85488	32.810	ug/l	24
77) Bromobenzene	12.75	156	90366	18.520	ug/l	95
78) n-propylbenzene	12.80	91	465383	17.343	ug/l	98
79) 2-Chlorotoluene	12.90	91	262848	17.358	ug/l	97
80) 1,3,5-Trimethylbenzene	12.94	105	326556	17.487	ug/l	97
81) trans-1,4-Dichloro-2-buten	12.51	75	21494	16.293	ug/l	95
82) 4-Chlorotoluene	12.99	91	274495	17.026	ug/l	98
83) tert-Butylbenzene	13.21	119	300357	18.074	ug/l	97
84) 1,2,4-Trimethylbenzene	13.26	105	331913	17.487	ug/l	99
85) sec-Butylbenzene	13.39	105	420420	17.715	ug/l	99
86) p-Isopropyltoluene	13.50	119	374108	17.996	ug/l	99
87) 1,3-Dichlorobenzene	13.51	146	180245	18.291	ug/l	98
88) 1,4-Dichlorobenzene	13.58	146	181046	18.487	ug/l	99
89) n-Butylbenzene	13.83	91	352828	17.286	ug/l	99
90) Hexachloroethane	14.10	117	70628	17.373	ug/l	96
91) 1,2-Dichlorobenzene	13.87	146	158336	18.160	ug/l	99
92) 1,2-Dibromo-3-Chloropropan	14.49	75	11437	17.041	ug/l	99

Data Path : Z:\VOASRV\HPCHEM1\MSVOA_W\DATA\VW013019\
Quantitation Report (Not Reviewed)

Data File : VW008458.D
Acq On : 30 Jan 2019 11:51
Operator : SY/VA
Sample : VW0130SBSD01
Misc : 5.00G/5ML/MSVOA_W/SOIL
ALS Vial : 5 Sample Multiplier: 1

Instrument :
MSVOA_W
ClientSampleId :
VW0130SBSD01

Quant Time: Jan 31 00:22:58 2019
Quant Method : Z:\VOASRV\HPCHEM1\MSVOA_W\METHOD\82W012419S.M
Quant Title : SW846 8260
QLast Update : Fri Jan 25 11:07:41 2019
Response via : Initial Calibration

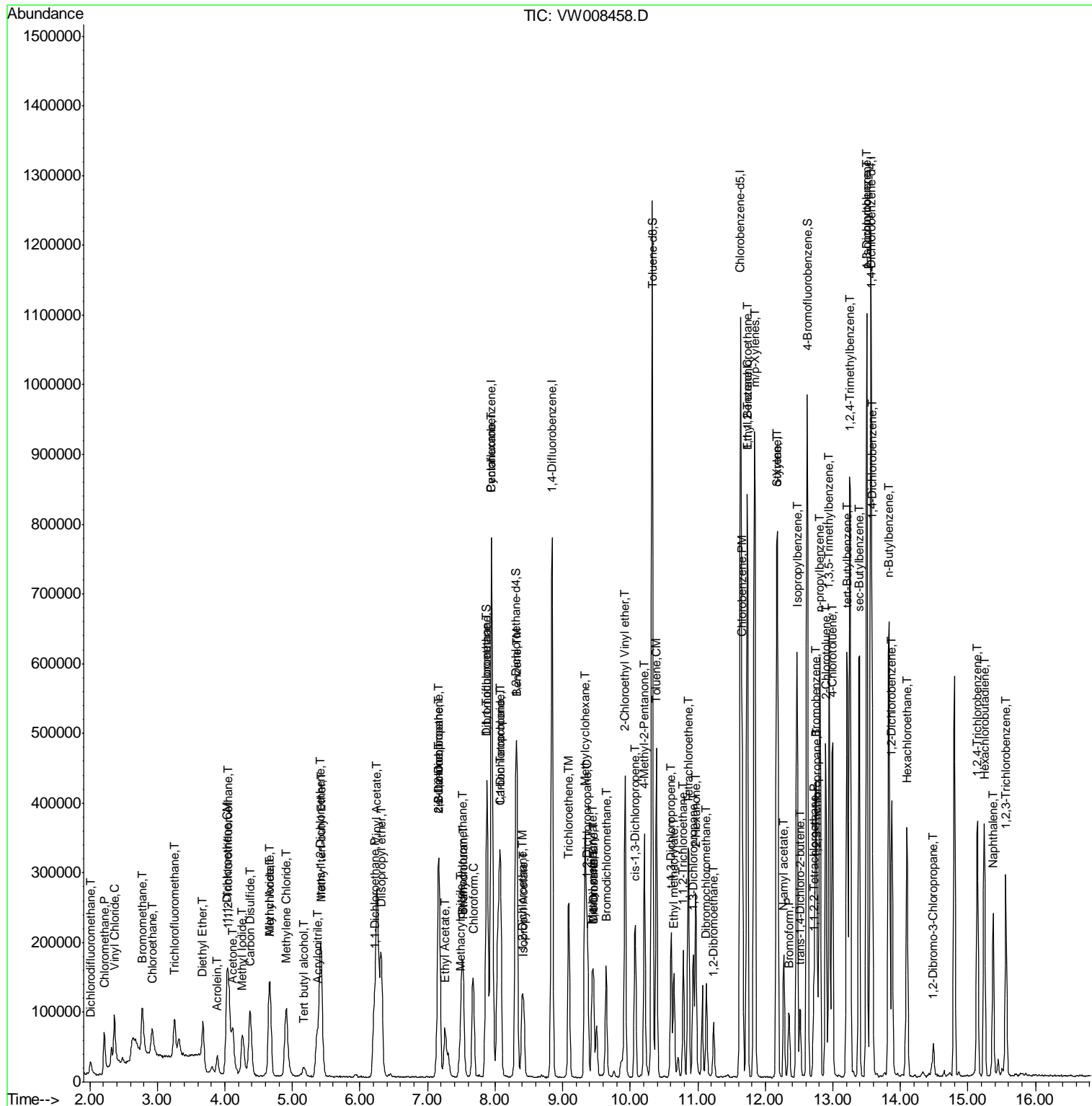
Internal Standards	R.T.	QIon	Response	Conc	Units	Dev(Min)
93) 1,2,4-Trichlorobenzene	15.14	180	115453	18.555	ug/l	99
94) Hexachlorobutadiene	15.24	225	71959	19.190	ug/l	98
95) Naphthalene	15.37	128	197611	18.088	ug/l	100
96) 1,2,3-Trichlorobenzene	15.56	180	99366	18.826	ug/l	99

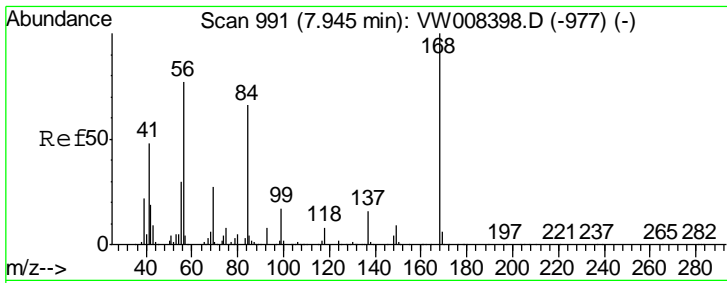
(#) = qualifier out of range (m) = manual integration (+) = signals summed

Data File : VW008458.D
Acq On : 30 Jan 2019 11:51
Operator : SY/VA
Sample : VW0130SBSD01
Misc : 5.00G/5ML/MSVOA_W/SOIL
ALS Vial : 5 Sample Multiplier: 1

Instrument :
MSVOA_W
Client Sampled :
VW0130SBSD01

Quant Time: Jan 31 00:22:58 2019
Quant Method : Z:\VOASRV\HPCHEM1\MSVOA_W\METHOD\82W012419S.M
Quant Title : SW846 8260
QLast Update : Fri Jan 25 11:07:41 2019
Response via : Initial Calibration

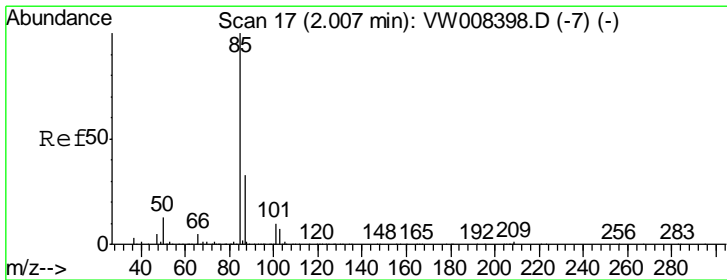
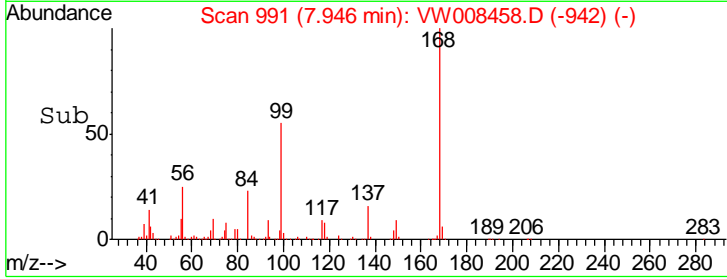
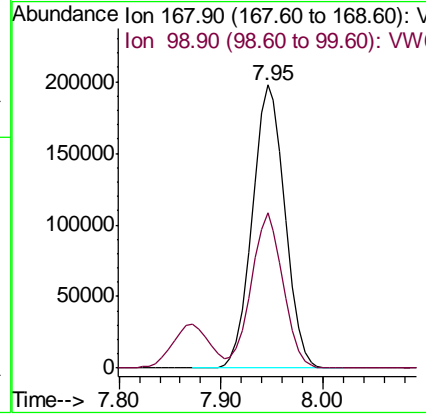
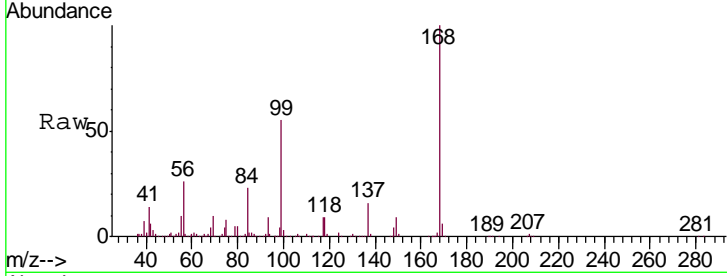




#1
 Pentafluorobenzene
 Concen: 50.000 ug/l
 RT: 7.95 min Scan# 991
 Delta R.T. 0.00 min
 Lab File: VW008458.D
 Acq: 30 Jan 2019 11:51

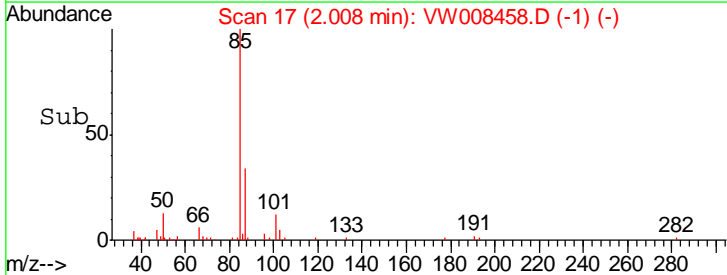
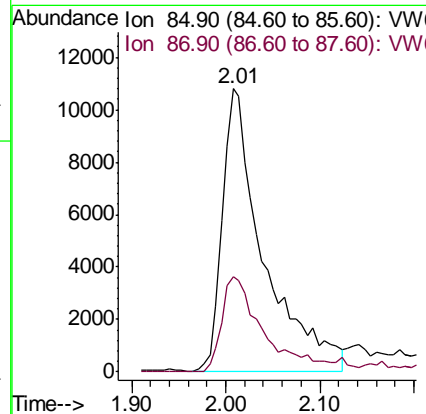
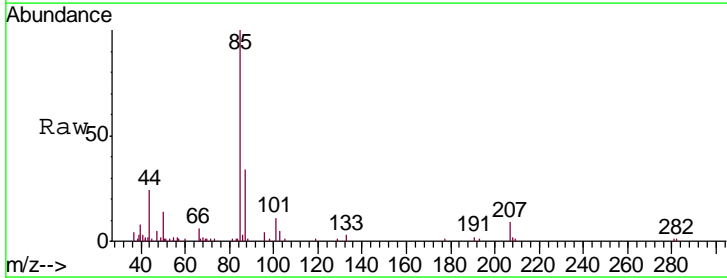
Instrument : MSVOA_W
 ClientSampled : VW0130SBSD01

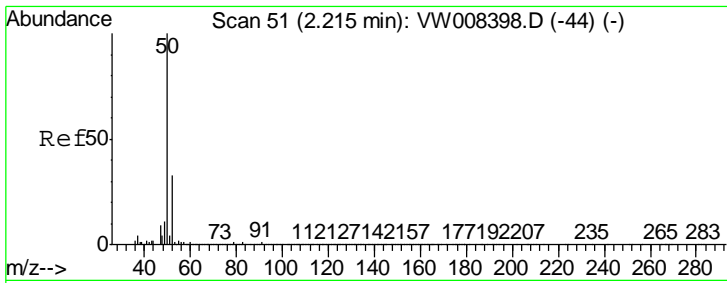
Tgt Ion	Resp	Lower	Upper
168	100		
99	54.9	45.5	68.3



#2
 Dichlorodifluoromethane
 Concen: 15.378 ug/l
 RT: 2.01 min Scan# 17
 Delta R.T. 0.00 min
 Lab File: VW008458.D
 Acq: 30 Jan 2019 11:51

Tgt Ion	Resp	Lower	Upper
85	100		
87	33.5	16.7	50.1

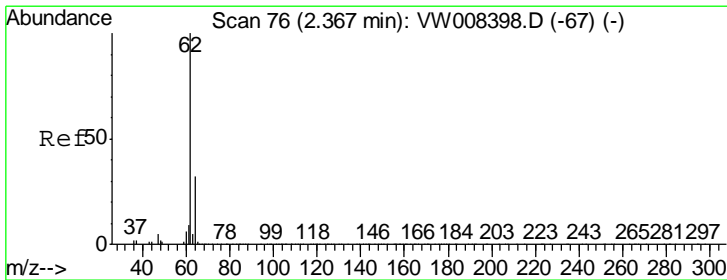
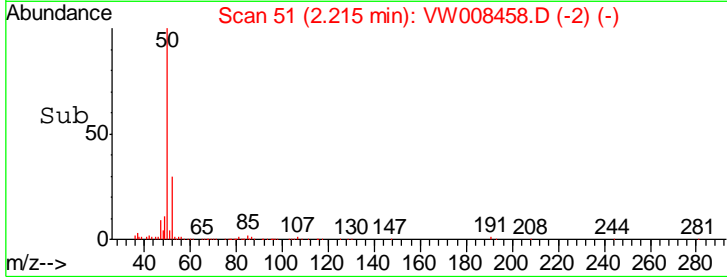
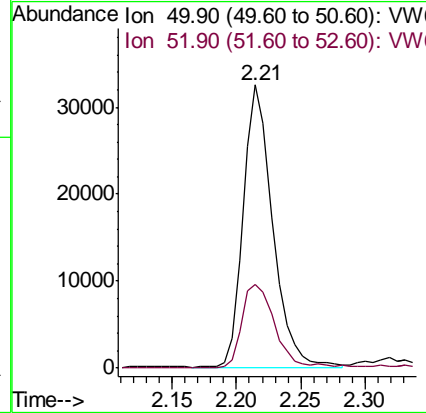
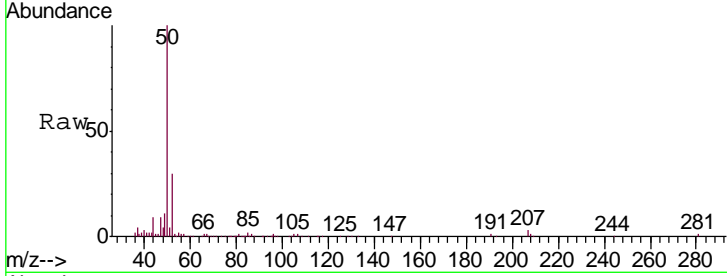




#3
 Chloromethane
 Concen: 14.284 ug/l
 RT: 2.21 min Scan# 51
 Delta R.T. 0.00 min
 Lab File: VW008458.D
 Acq: 30 Jan 2019 11:51

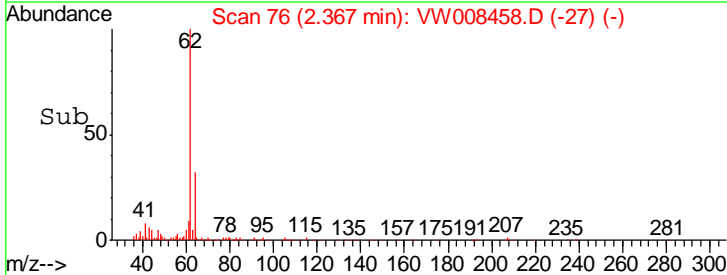
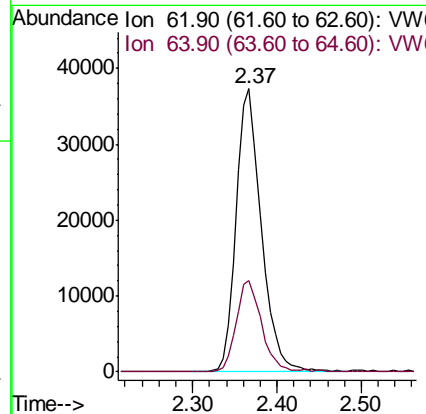
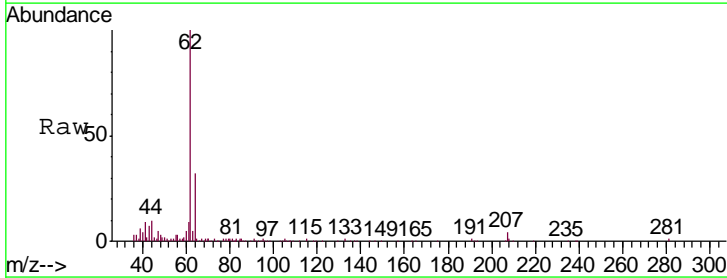
Instrument :
 MSVOA_W
 ClientSampled :
 VW0130SBSD01

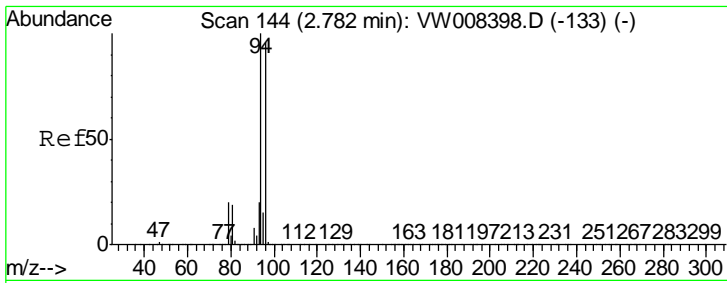
Tgt Ion: 50 Resp: 51152
 Ion Ratio Lower Upper
 50 100
 52 29.8 26.3 39.5



#4
 Vinyl Chloride
 Concen: 16.588 ug/l
 RT: 2.37 min Scan# 76
 Delta R.T. 0.00 min
 Lab File: VW008458.D
 Acq: 30 Jan 2019 11:51

Tgt Ion: 62 Resp: 75614
 Ion Ratio Lower Upper
 62 100
 64 32.2 25.5 38.3

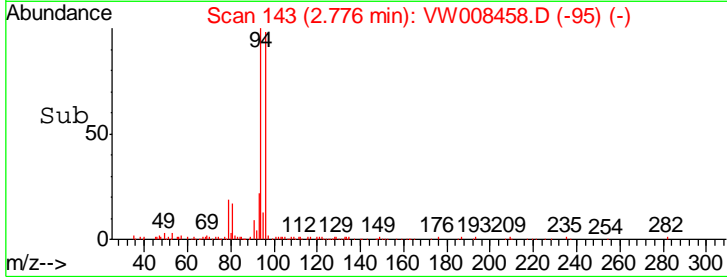
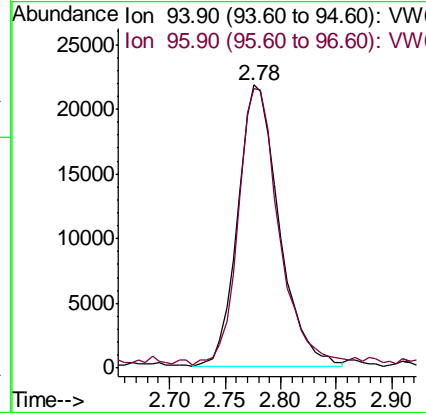
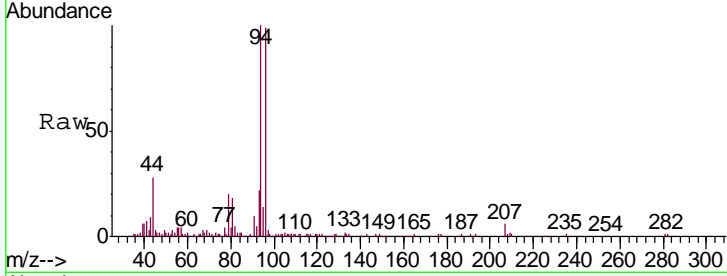




#5
 Bromomethane
 Concen: 19.039 ug/l
 RT: 2.78 min Scan# 143
 Delta R.T. -0.01 min
 Lab File: VW008458.D
 Acq: 30 Jan 2019 11:51

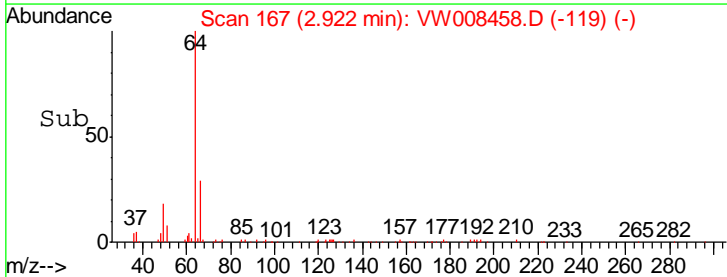
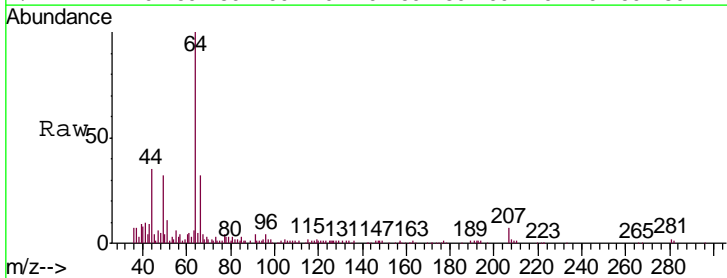
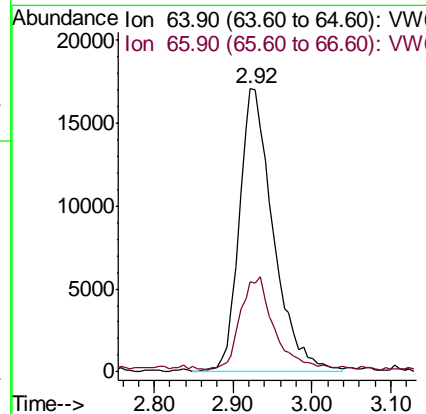
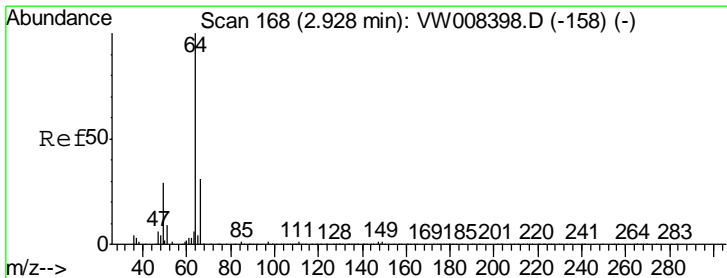
Instrument :
 MSVOA_W
 ClientSampleId :
 VW0130SBSD01

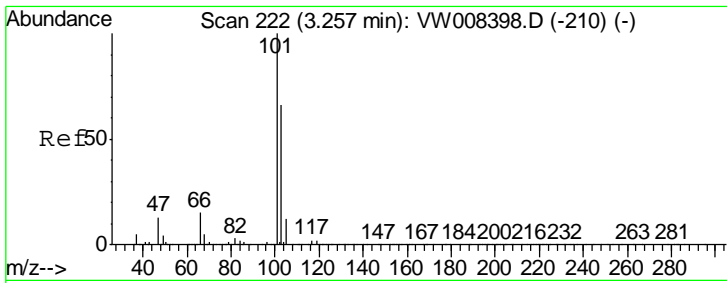
Tgt Ion: 94 Resp: 55980
 Ion Ratio Lower Upper
 94 100
 96 98.0 77.2 115.8



#6
 Chloroethane
 Concen: 18.409 ug/l
 RT: 2.92 min Scan# 167
 Delta R.T. -0.01 min
 Lab File: VW008458.D
 Acq: 30 Jan 2019 11:51

Tgt Ion: 64 Resp: 51320
 Ion Ratio Lower Upper
 64 100
 66 29.5 24.9 37.3

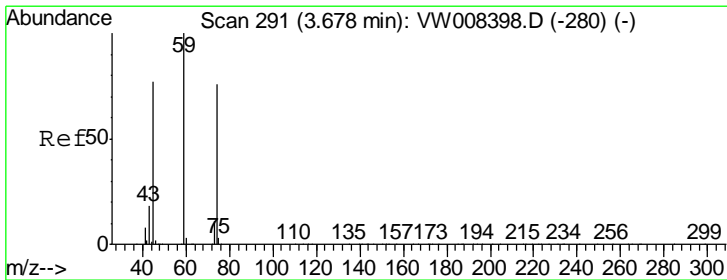
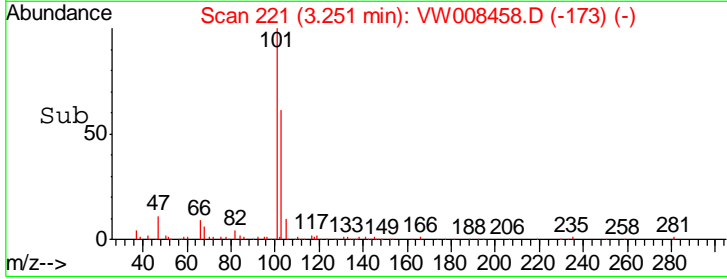
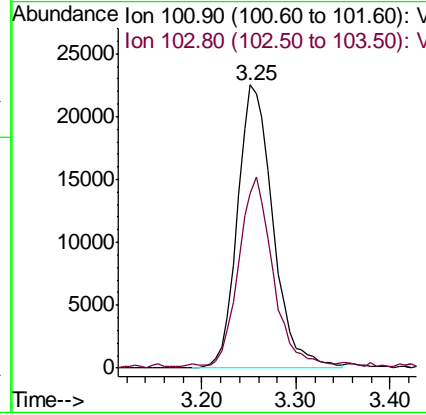
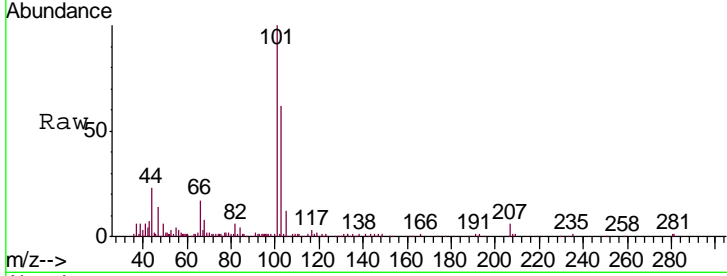




#7
 Trichlorofluoromethane
 Concen: 18.251 ug/l
 RT: 3.25 min Scan# 221
 Delta R.T. -0.01 min
 Lab File: VW008458.D
 Acq: 30 Jan 2019 11:51

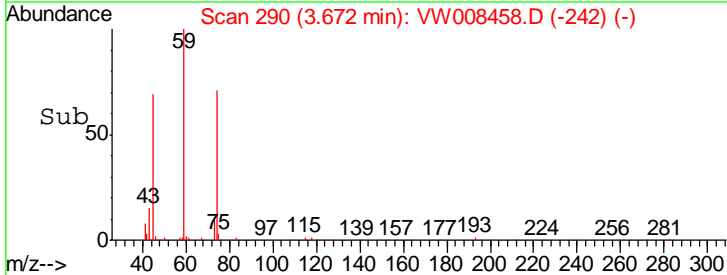
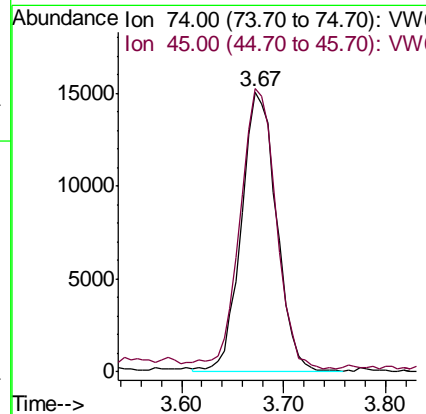
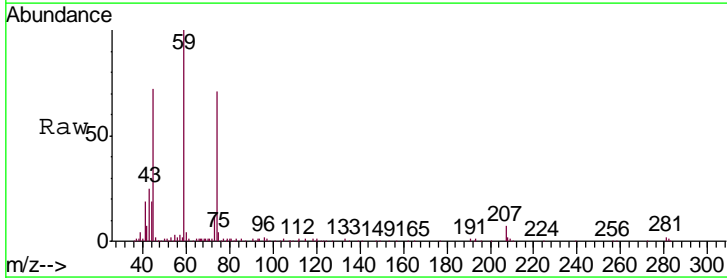
Instrument :
 MSVOA_W
 ClientSampled :
 VW0130SBSD01

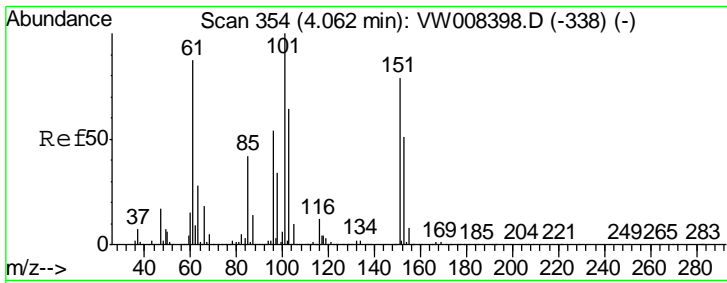
Tgt Ion	Resp	Lower	Upper
101	59226		
103	59.9	52.5	78.7



#8
 Diethyl Ether
 Concen: 16.313 ug/l
 RT: 3.67 min Scan# 290
 Delta R.T. -0.01 min
 Lab File: VW008458.D
 Acq: 30 Jan 2019 11:51

Tgt Ion	Resp	Lower	Upper
74	35689		
45	104.1	51.7	155.2

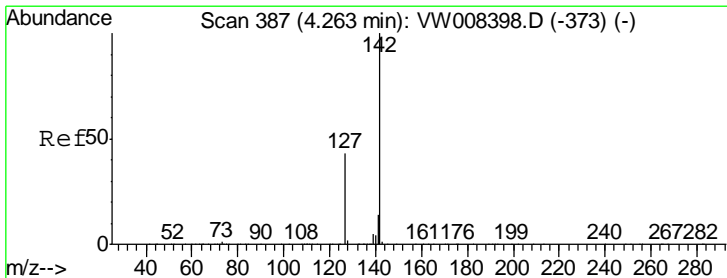
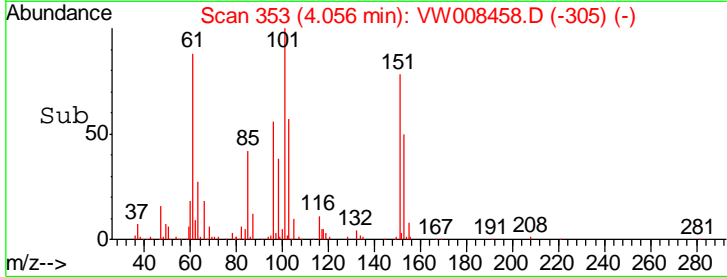
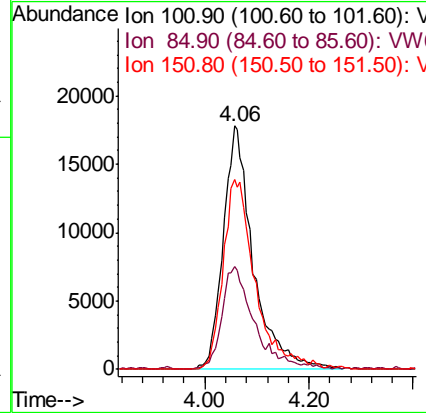
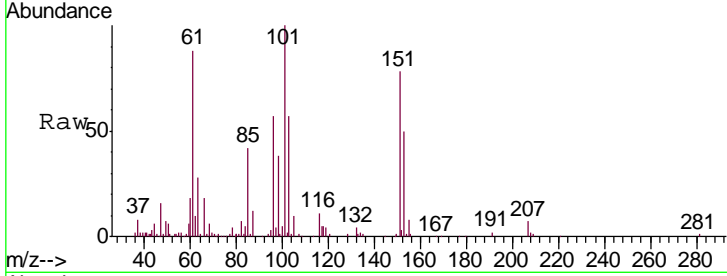




#9
 1,1,2-Trichlorotrifluoroethane
 Concen: 18.103 ug/l
 RT: 4.06 min Scan# 353
 Delta R.T. -0.01 min
 Lab File: VW008458.D
 Acq: 30 Jan 2019 11:51

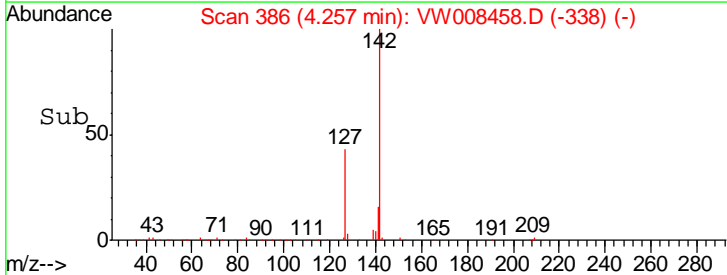
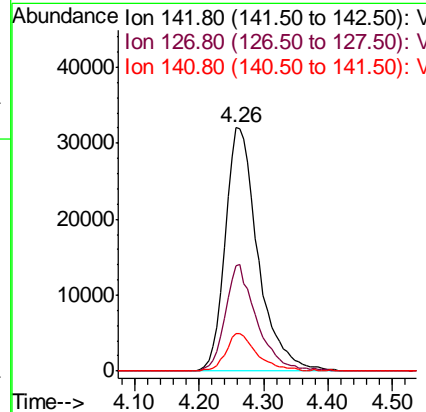
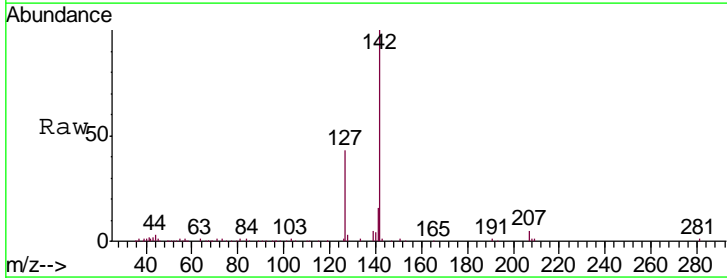
Instrument :
 MSVOA_W
 ClientSampleId :
 VW0130SBSD01

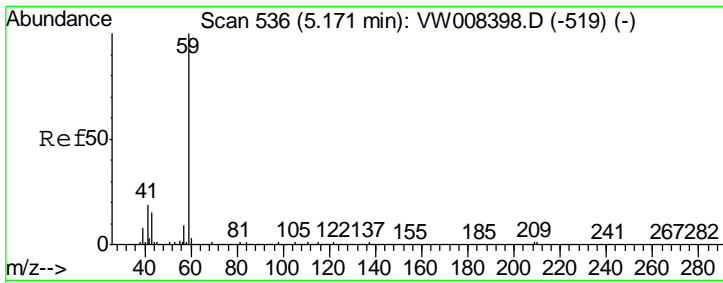
Tgt Ion	Resp	Lower	Upper
101	71830		
85	44.7	35.0	52.4
151	82.5	62.6	94.0



#10
 Methyl Iodide
 Concen: 18.221 ug/l
 RT: 4.26 min Scan# 386
 Delta R.T. -0.01 min
 Lab File: VW008458.D
 Acq: 30 Jan 2019 11:51

Tgt Ion	Resp	Lower	Upper
142	114195		
127	41.9	34.6	52.0
141	14.9	11.4	17.2

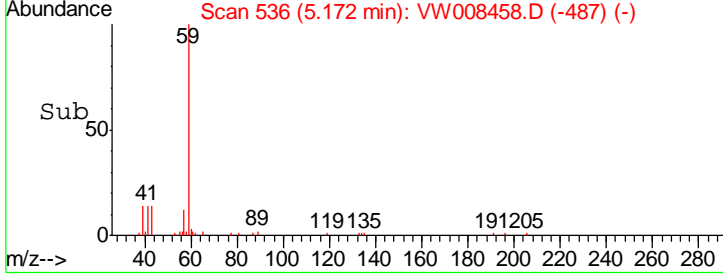
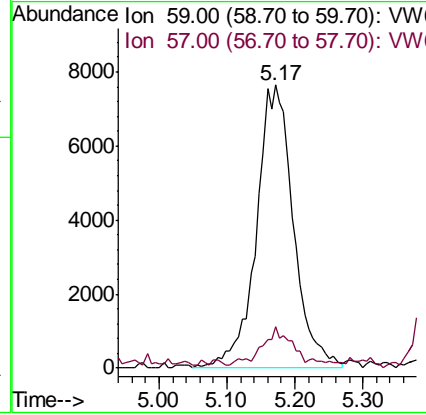
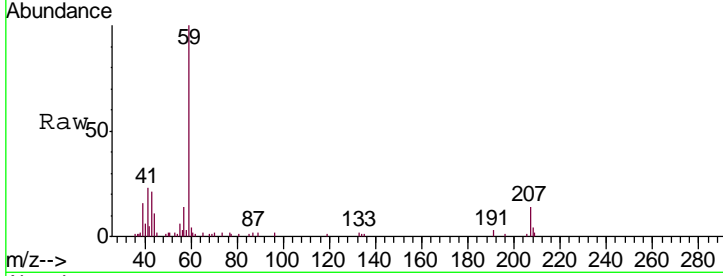




#11
 Tert butyl alcohol
 Concen: 83.632 ug/l
 RT: 5.17 min Scan# 536
 Delta R.T. 0.00 min
 Lab File: VW008458.D
 Acq: 30 Jan 2019 11:51

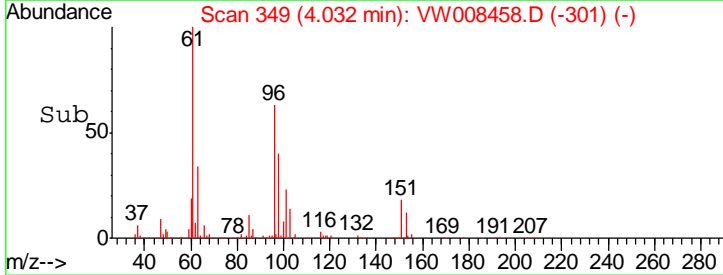
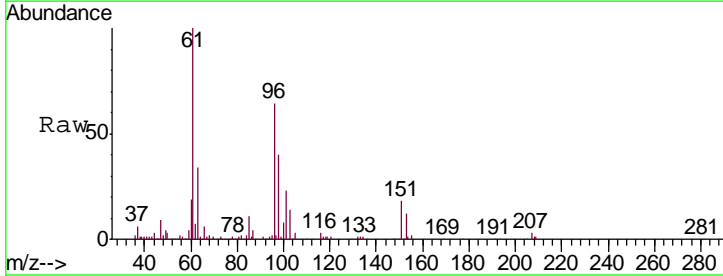
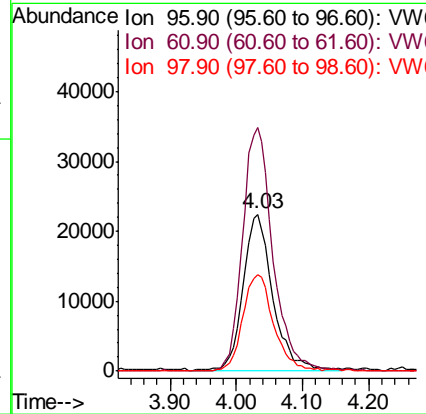
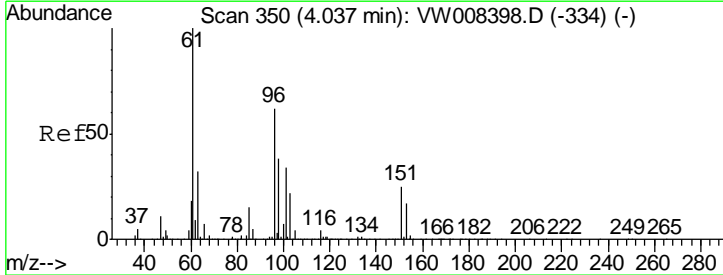
Instrument : MSVOA_W
 ClientSampleId : VW0130SBSD01

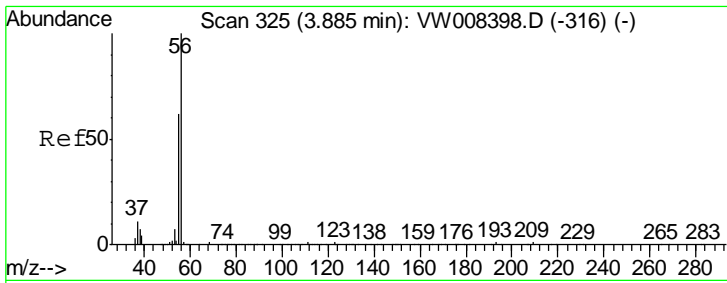
Tgt Ion	Resp	Lower	Upper
59	100		
57	7.5	9.3	13.9#



#12
 1,1-Dichloroethene
 Concen: 17.228 ug/l
 RT: 4.03 min Scan# 349
 Delta R.T. -0.01 min
 Lab File: VW008458.D
 Acq: 30 Jan 2019 11:51

Tgt Ion	Resp	Lower	Upper
96	100		
61	156.3	129.5	194.3
98	62.0	48.6	73.0

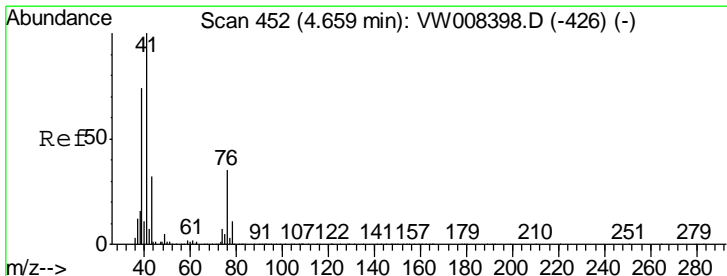
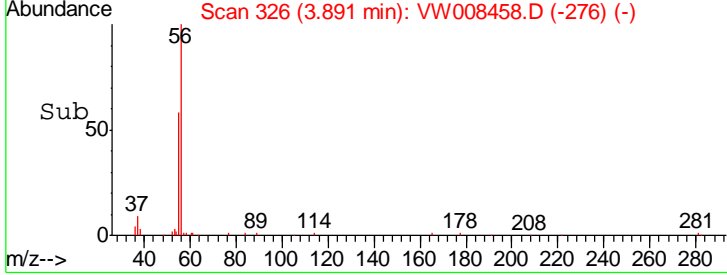
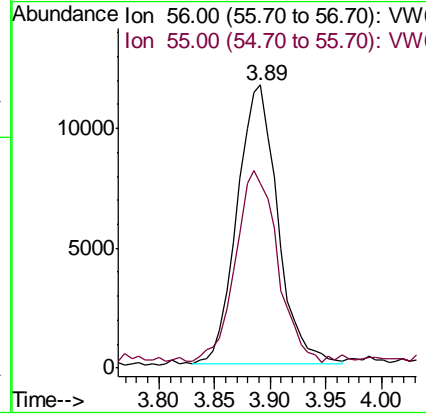
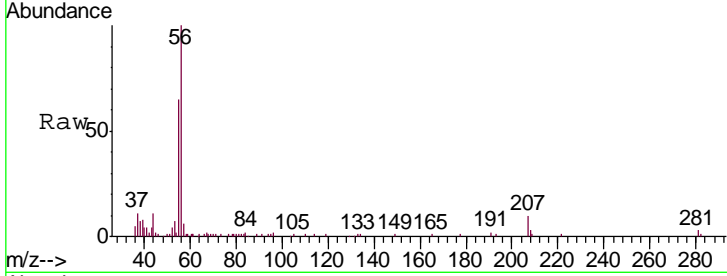




#13
 Acrolein
 Concen: 99.575 ug/l
 RT: 3.89 min Scan# 326
 Delta R.T. 0.01 min
 Lab File: VW008458.D
 Acq: 30 Jan 2019 11:51

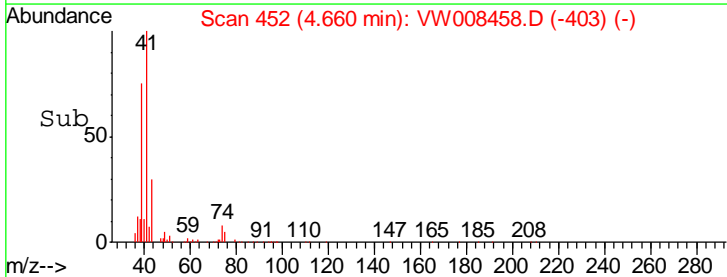
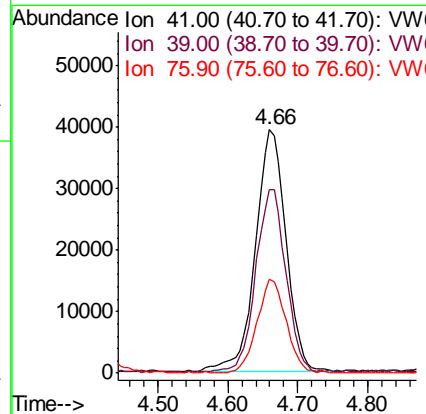
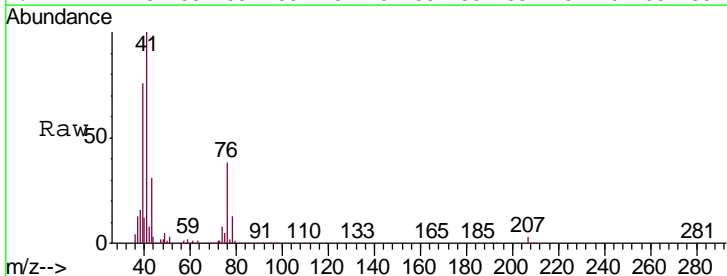
Instrument : MSVOA_W
 ClientSampled : VW0130SBSD01

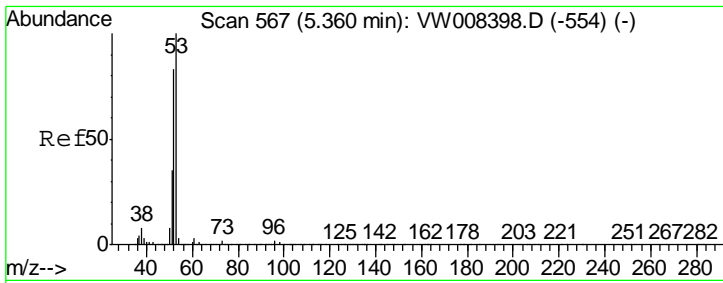
Tgt Ion	Resp	Lower	Upper
56	100		
55	70.6	56.7	85.1



#14
 Allyl chloride
 Concen: 15.770 ug/l
 RT: 4.66 min Scan# 452
 Delta R.T. 0.00 min
 Lab File: VW008458.D
 Acq: 30 Jan 2019 11:51

Tgt Ion	Resp	Lower	Upper
41	100		
39	74.0	57.7	86.5
76	36.8	26.9	40.3

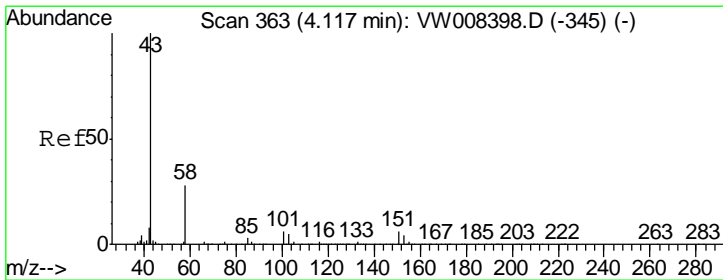
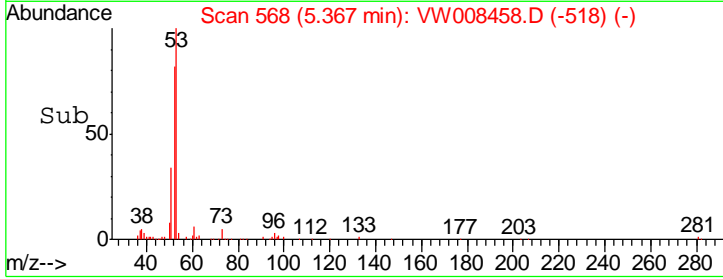
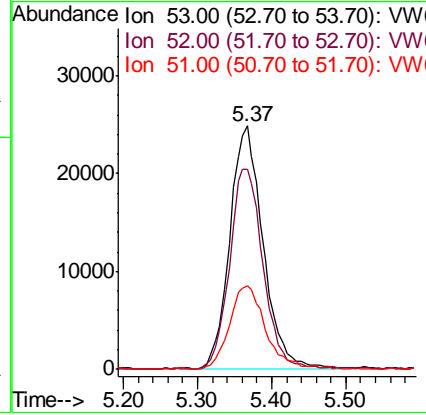
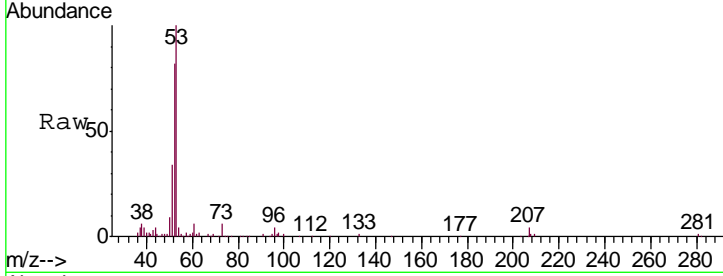




#15
 Acrylonitrile
 Concen: 81.738 ug/l
 RT: 5.37 min Scan# 568
 Delta R.T. 0.01 min
 Lab File: VW008458.D
 Acq: 30 Jan 2019 11:51

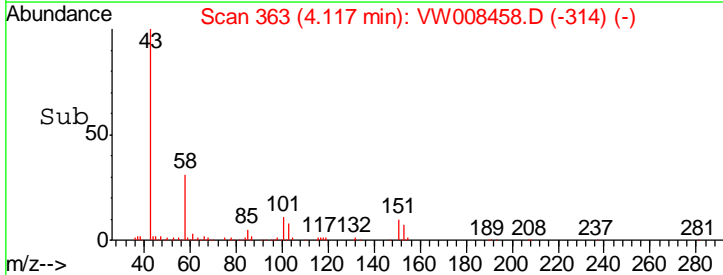
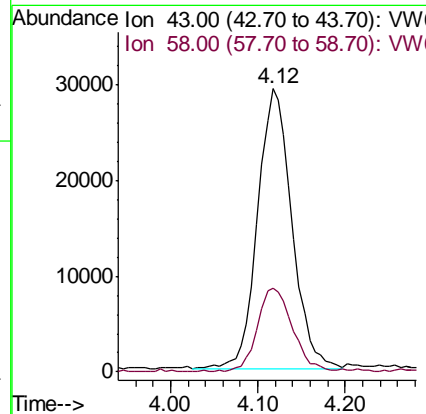
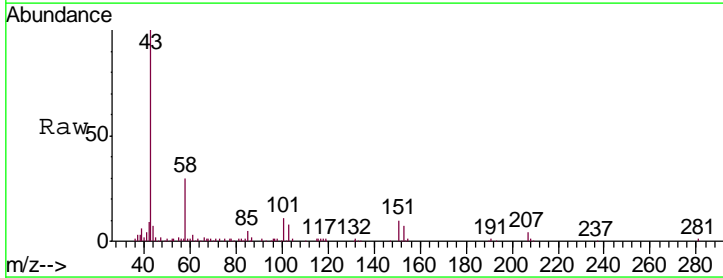
Instrument :
 MSVOA_W
 ClientSampled :
 VW0130SBSD01

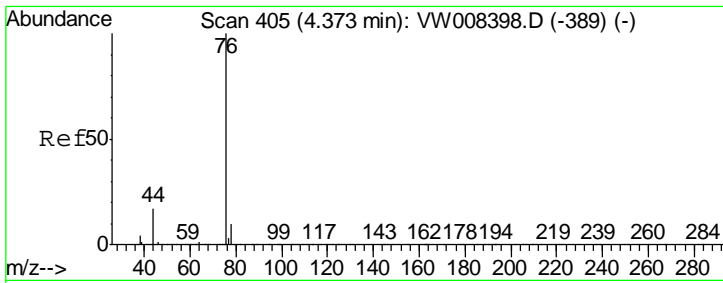
Tgt Ion	Resp	Lower	Upper
53	100		
52	83.5	67.0	100.4
51	37.2	29.8	44.8



#16
 Acetone
 Concen: 82.013 ug/l
 RT: 4.12 min Scan# 363
 Delta R.T. 0.00 min
 Lab File: VW008458.D
 Acq: 30 Jan 2019 11:51

Tgt Ion	Resp	Lower	Upper
43	100		
58	29.8	22.6	34.0

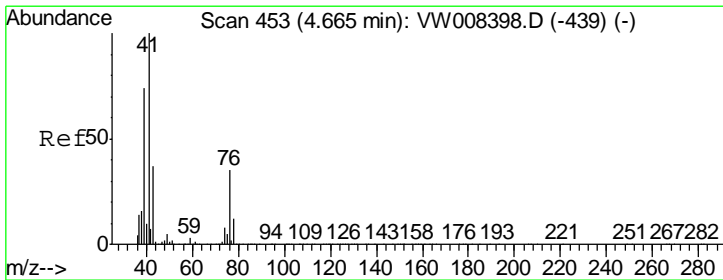
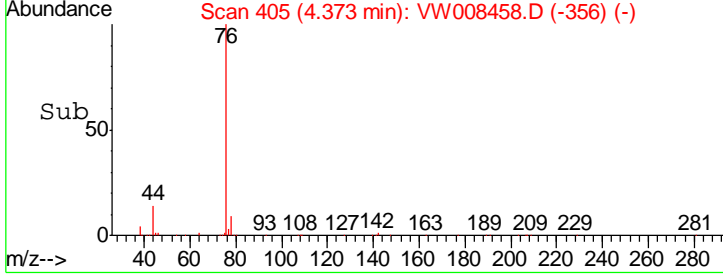
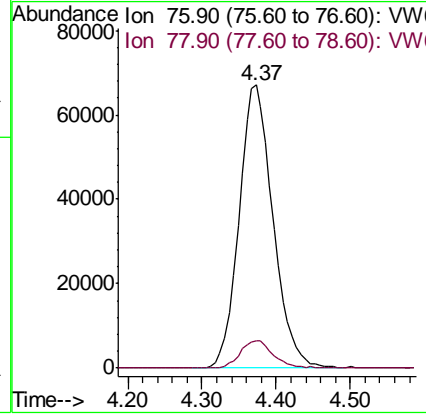
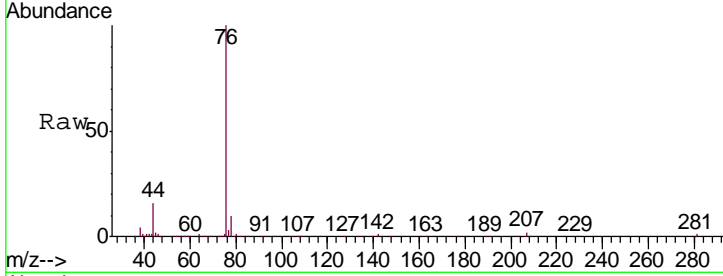




#17
 Carbon Disulfide
 Concen: 16.662 ug/l
 RT: 4.37 min Scan# 405
 Delta R.T. 0.00 min
 Lab File: VW008458.D
 Acq: 30 Jan 2019 11:51

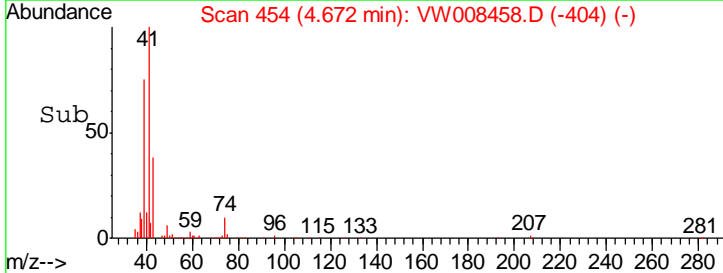
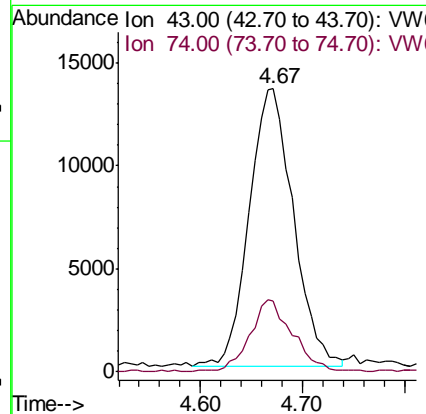
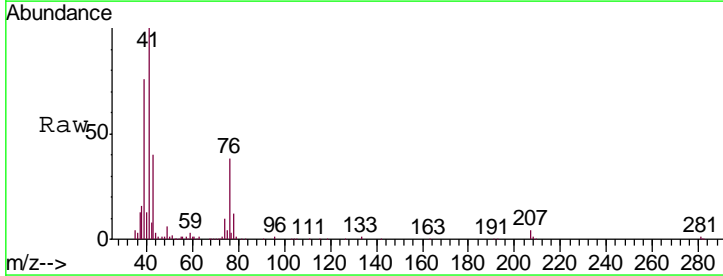
Instrument :
 MSVOA_W
 ClientSampled :
 VW0130SBSD01

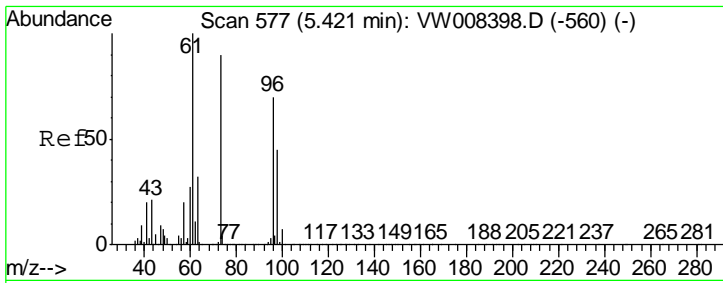
Tgt Ion	Resp	Lower	Upper
76	213679		
78	9.7	7.7	11.5



#18
 Methyl Acetate
 Concen: 15.741 ug/l
 RT: 4.67 min Scan# 454
 Delta R.T. 0.01 min
 Lab File: VW008458.D
 Acq: 30 Jan 2019 11:51

Tgt Ion	Resp	Lower	Upper
43	40633		
74	25.2	17.5	26.3

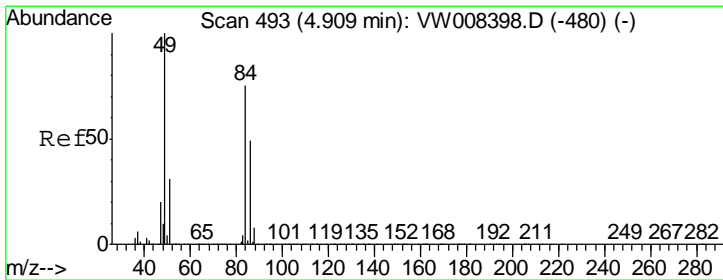
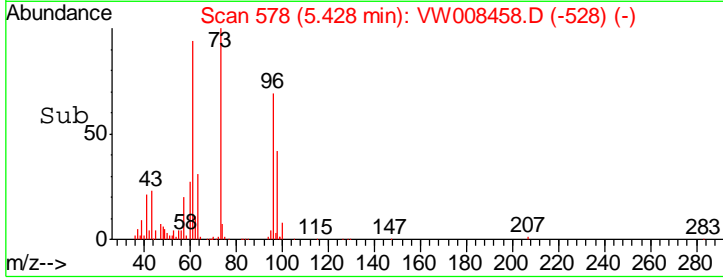
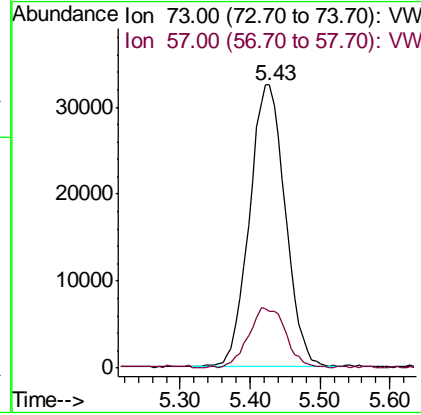
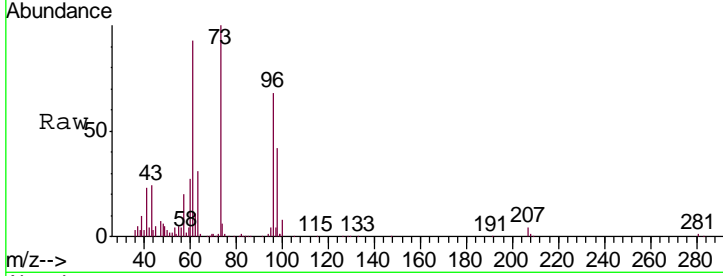




#19
 Methyl tert-butyl Ether
 Concen: 17.418 ug/l
 RT: 5.43 min Scan# 578
 Delta R.T. 0.01 min
 Lab File: VW008458.D
 Acq: 30 Jan 2019 11:51

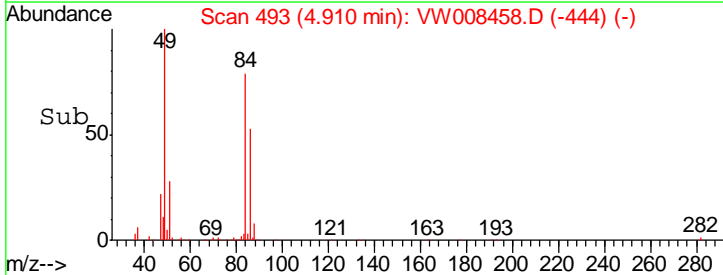
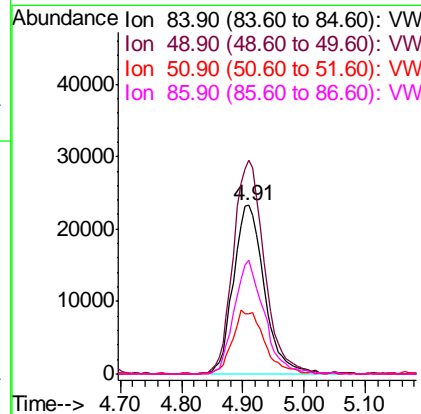
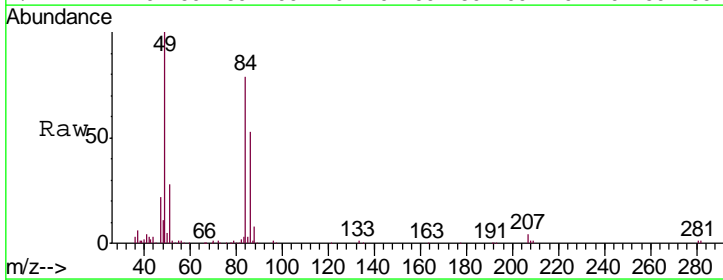
Instrument :
 MSVOA_W
ClientSampled :
 VW0130SBSD01

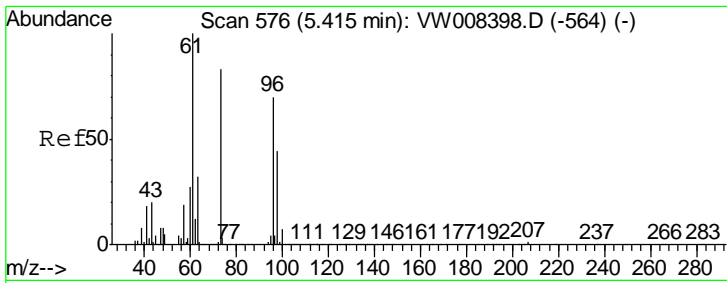
Tgt Ion: 73 Resp: 115720
 Ion Ratio Lower Upper
 73 100
 57 19.9 18.0 27.0



#20
 Methylene Chloride
 Concen: 18.233 ug/l
 RT: 4.91 min Scan# 493
 Delta R.T. 0.00 min
 Lab File: VW008458.D
 Acq: 30 Jan 2019 11:51

Tgt Ion: 84 Resp: 81331
 Ion Ratio Lower Upper
 84 100
 49 126.5 106.8 160.2
 51 36.1 32.9 49.3
 86 67.4 52.2 78.2

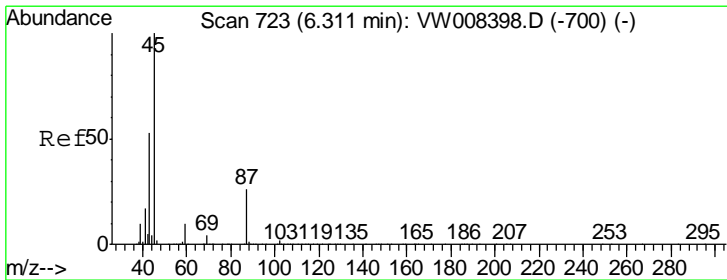
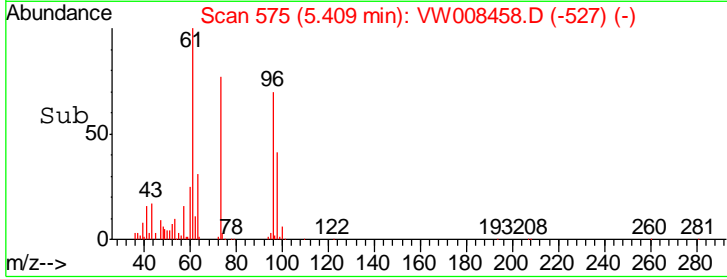
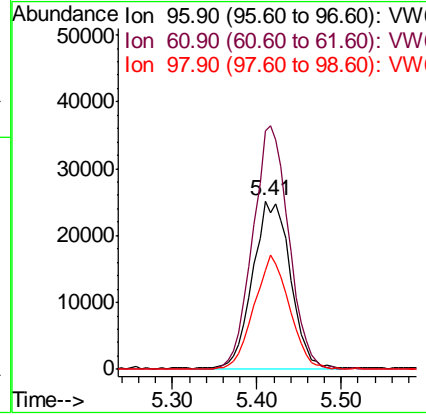
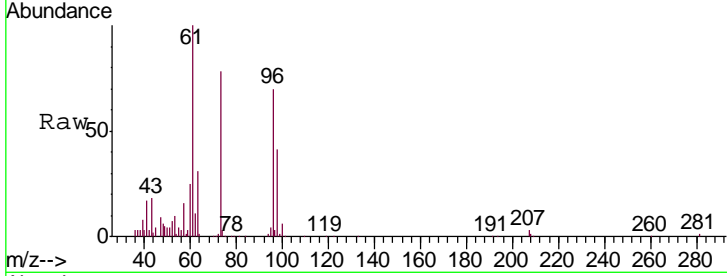




#21
 trans-1,2-Dichloroethene
 Concen: 17.188 ug/l
 RT: 5.41 min Scan# 575
 Delta R.T. -0.01 min
 Lab File: VW008458.D
 Acq: 30 Jan 2019 11:51

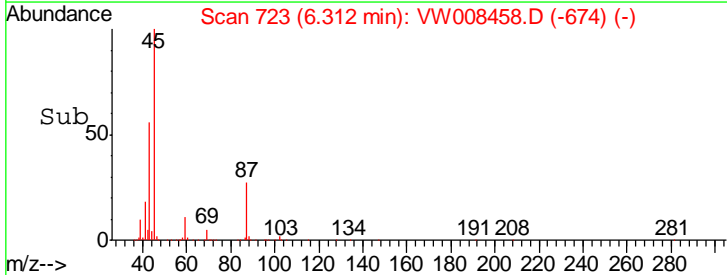
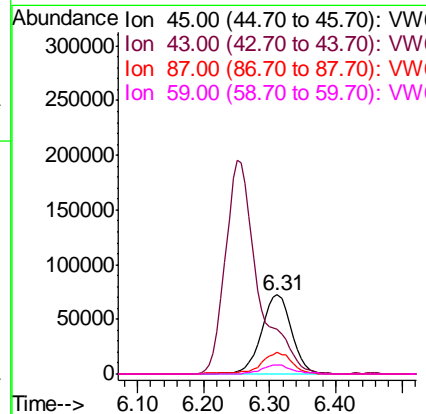
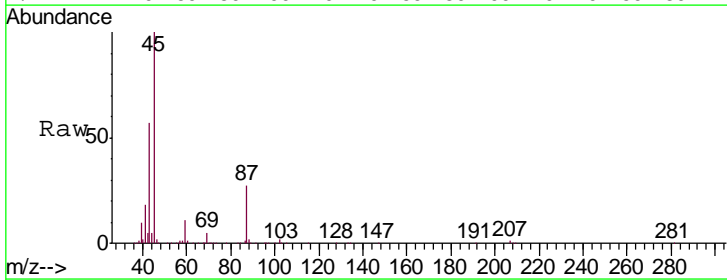
Instrument :
 MSVOA_W
 ClientSampled :
 VW0130SBSD01

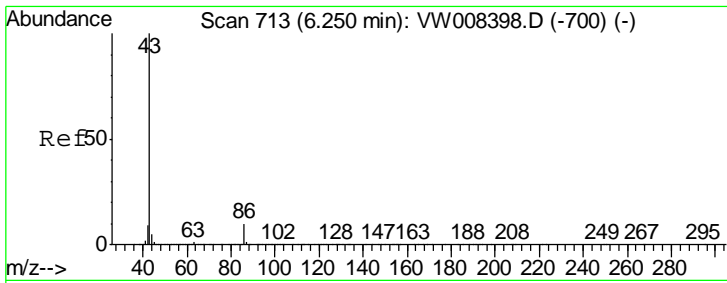
Tgt Ion	Resp	Lower	Upper
96	77595		
61	141.9	114.4	171.6
98	58.6	50.6	75.8



#22
 Diisopropyl ether
 Concen: 15.956 ug/l
 RT: 6.31 min Scan# 723
 Delta R.T. 0.00 min
 Lab File: VW008458.D
 Acq: 30 Jan 2019 11:51

Tgt Ion	Resp	Lower	Upper
45	230587		
43	56.4	42.6	63.8
87	27.0	20.3	30.5
59	11.1	8.4	12.6

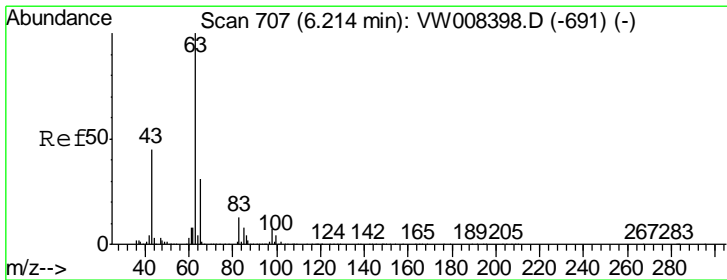
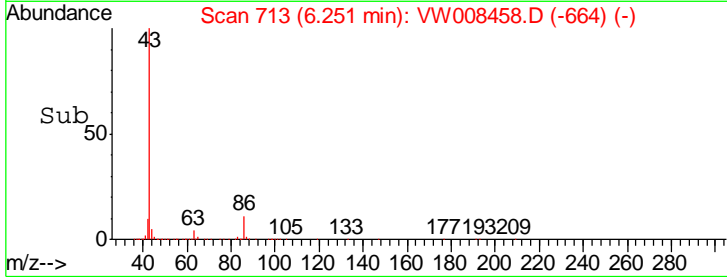
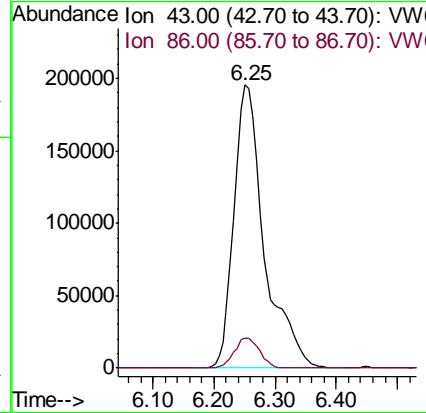
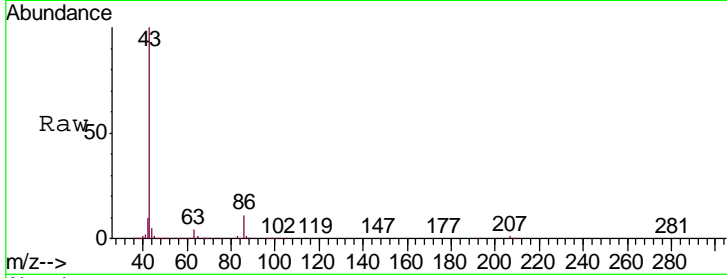




#23
 Vinyl Acetate
 Concen: 77.950 ug/l
 RT: 6.25 min Scan# 713
 Delta R.T. 0.00 min
 Lab File: VW008458.D
 Acq: 30 Jan 2019 11:51

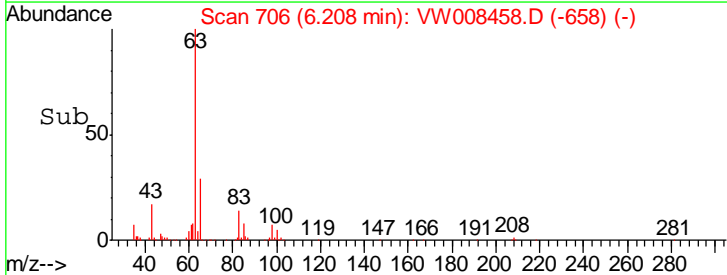
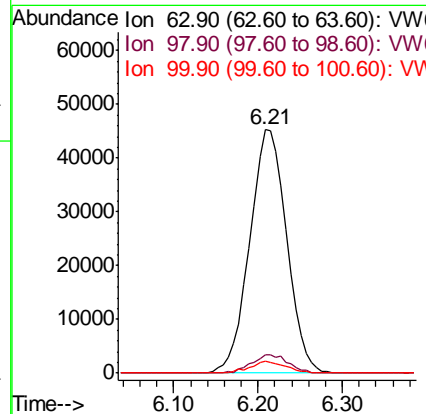
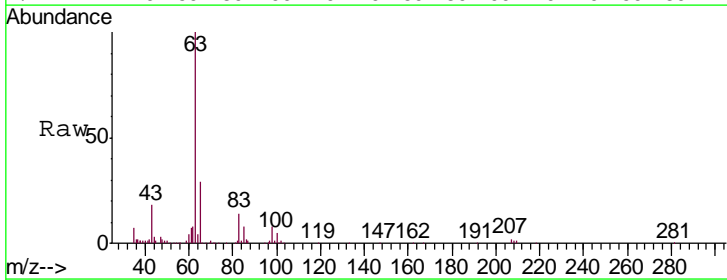
Instrument :
 MSVOA_W
 ClientSampled :
 VW0130SBSD01

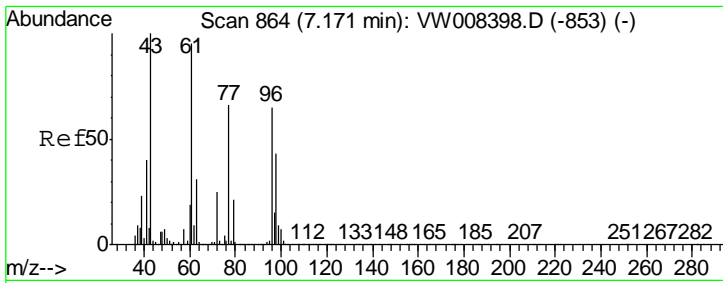
Tgt Ion	Resp	Lower	Upper
43	100		
86	10.6	7.8	11.8



#24
 1,1-Dichloroethane
 Concen: 16.533 ug/l
 RT: 6.21 min Scan# 706
 Delta R.T. -0.01 min
 Lab File: VW008458.D
 Acq: 30 Jan 2019 11:51

Tgt Ion	Resp	Lower	Upper
63	100		
98	7.5	3.5	10.5
100	4.7	2.1	6.2

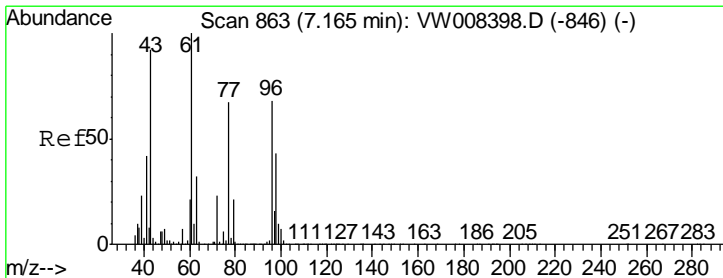
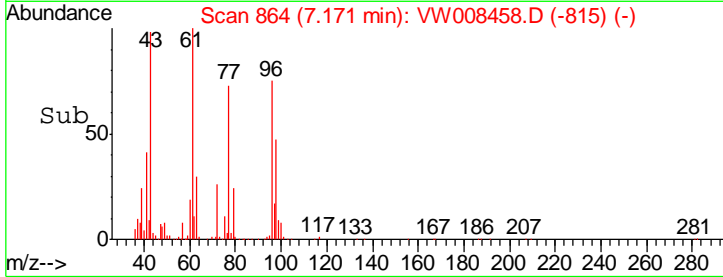
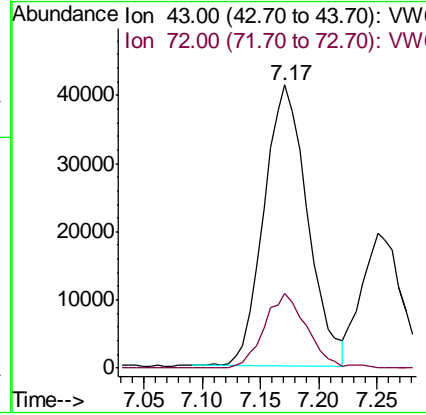
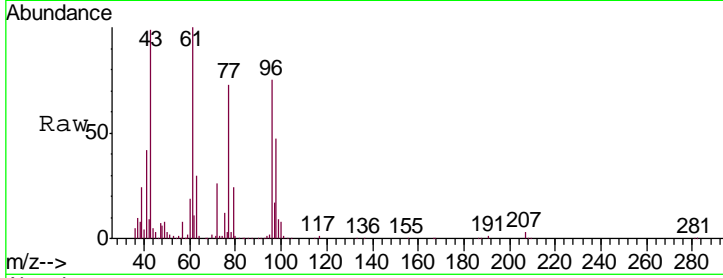




#25
 2-Butanone
 Concen: 79.390 ug/l
 RT: 7.17 min Scan# 864
 Delta R.T. 0.00 min
 Lab File: VW008458.D
 Acq: 30 Jan 2019 11:51

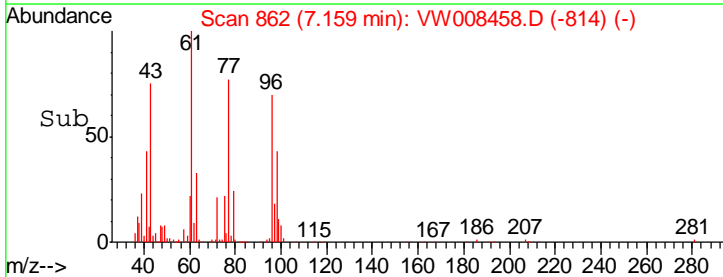
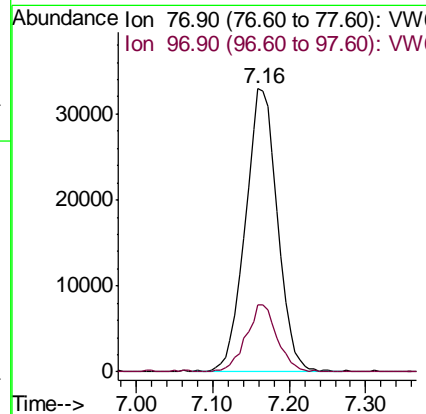
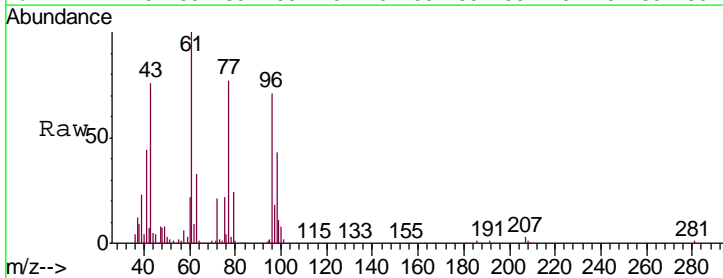
Instrument :
 MSVOA_W
 ClientSampled :
 VW0130SBSD01

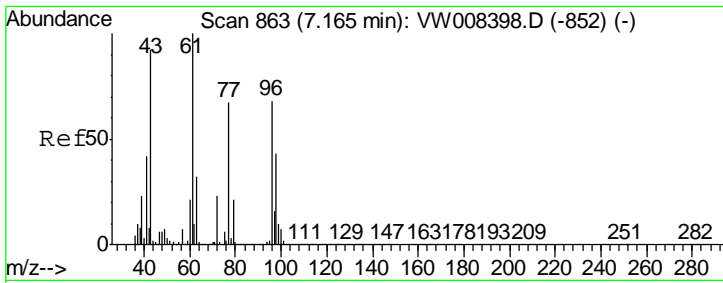
Tgt Ion: 43 Resp: 106723
 Ion Ratio Lower Upper
 43 100
 72 26.5 20.1 30.1



#26
 2,2-Dichloropropane
 Concen: 17.405 ug/l
 RT: 7.16 min Scan# 862
 Delta R.T. -0.01 min
 Lab File: VW008458.D
 Acq: 30 Jan 2019 11:51

Tgt Ion: 77 Resp: 96237
 Ion Ratio Lower Upper
 77 100
 97 22.9 11.5 34.5

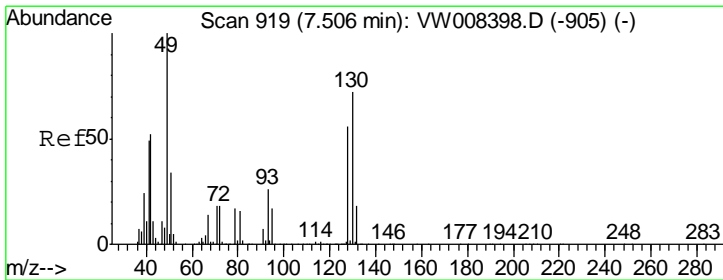
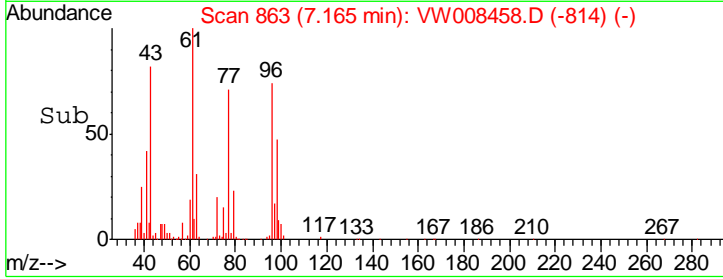
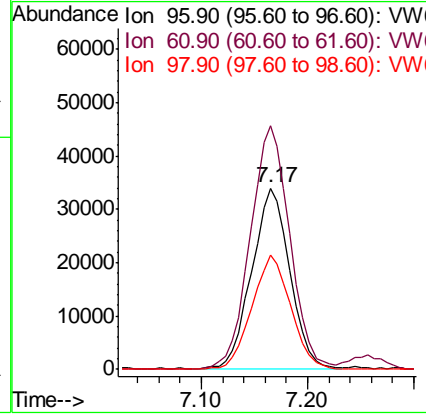
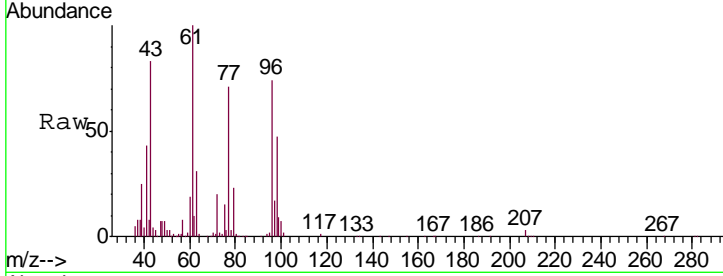




#27
 cis-1,2-Dichloroethene
 Concen: 17.153 ug/l
 RT: 7.17 min Scan# 863
 Delta R.T. 0.00 min
 Lab File: VW008458.D
 Acq: 30 Jan 2019 11:51

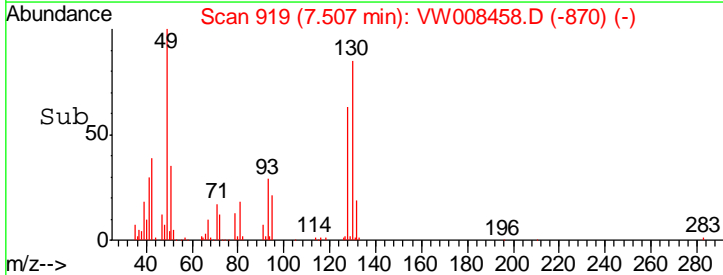
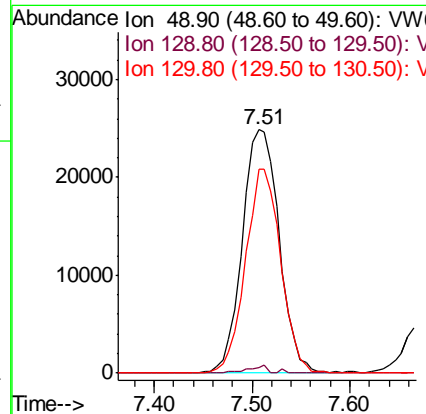
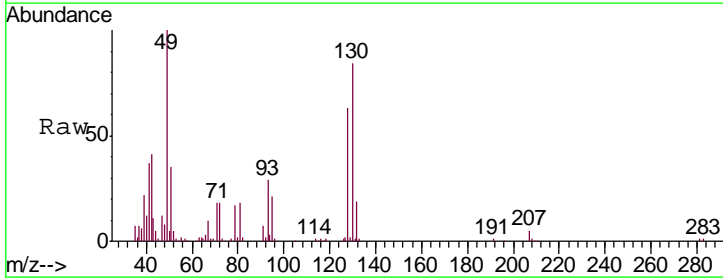
Instrument :
 MSVOA_W
 ClientSampleId :
 VW0130SBSD01

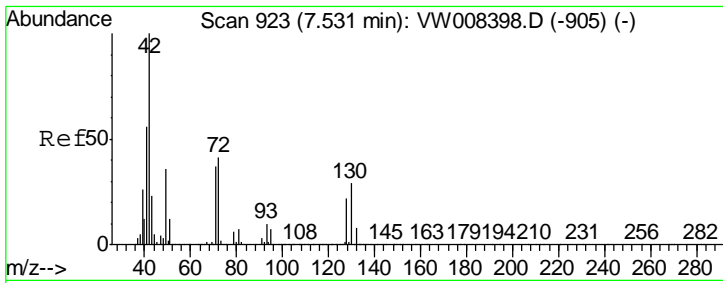
Tgt Ion	Resp	Lower	Upper
96	84394		
61	141.1	0.0	292.8
98	65.1	0.0	129.2



#28
 Bromochloromethane
 Concen: 17.305 ug/l
 RT: 7.51 min Scan# 919
 Delta R.T. 0.00 min
 Lab File: VW008458.D
 Acq: 30 Jan 2019 11:51

Tgt Ion	Resp	Lower	Upper
49	65015		
129	1.5	0.0	4.6
130	80.1	58.6	87.8

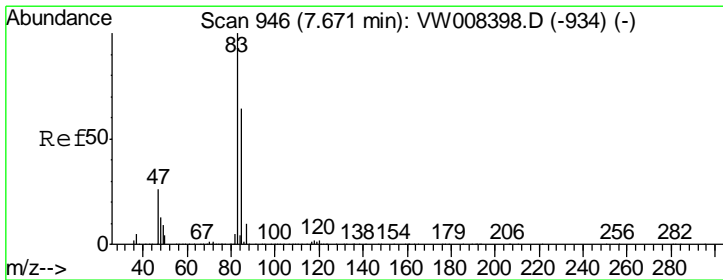
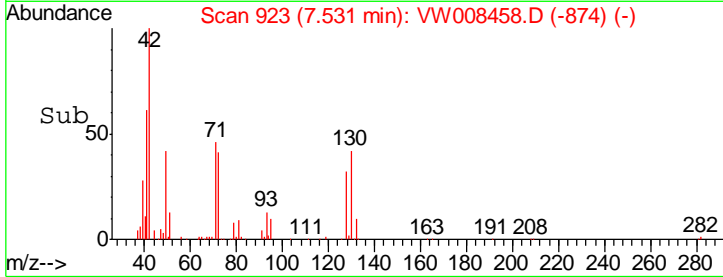
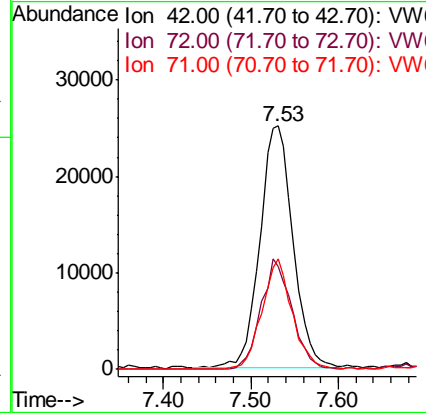
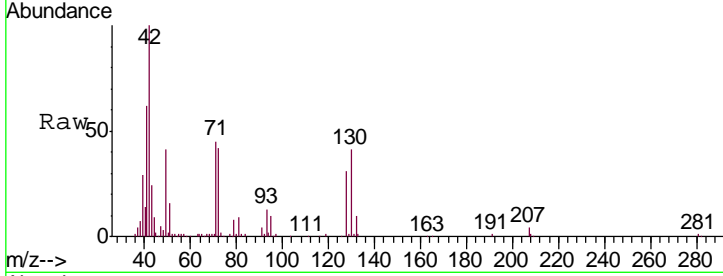




#29
 Tetrahydrofuran
 Concen: 78.247 ug/l
 RT: 7.53 min Scan# 923
 Delta R.T. 0.00 min
 Lab File: VW008458.D
 Acq: 30 Jan 2019 11:51

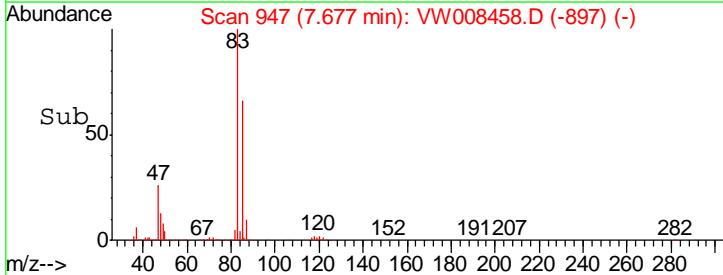
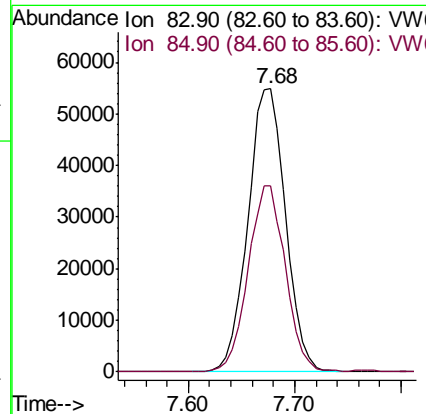
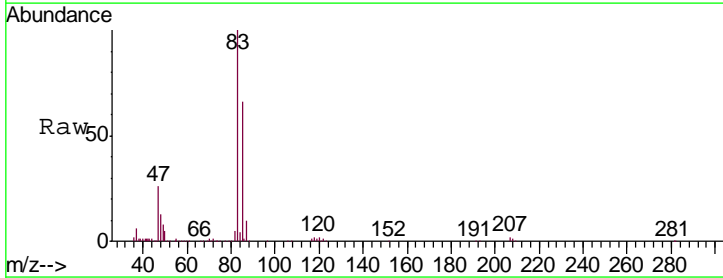
Instrument :
 MSVOA_W
 ClientSampled :
 VW0130SBSD01

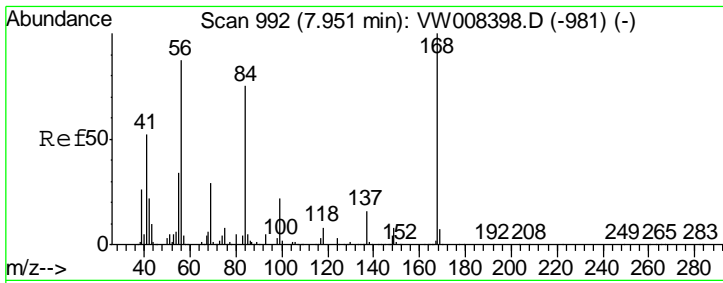
Tgt Ion	Resp	Lower	Upper
42	66657		
72	42.5	31.9	47.9
71	41.7	29.9	44.9



#30
 Chloroform
 Concen: 16.931 ug/l
 RT: 7.68 min Scan# 947
 Delta R.T. 0.01 min
 Lab File: VW008458.D
 Acq: 30 Jan 2019 11:51

Tgt Ion	Resp	Lower	Upper
83	136224		
85	65.8	50.9	76.3

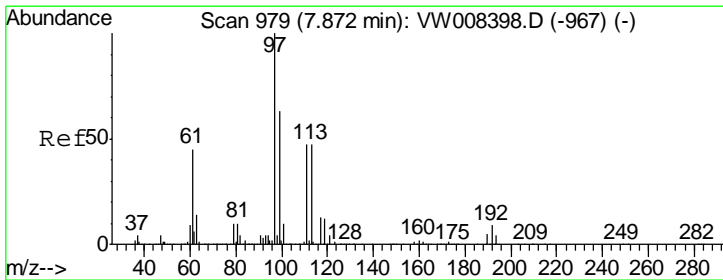
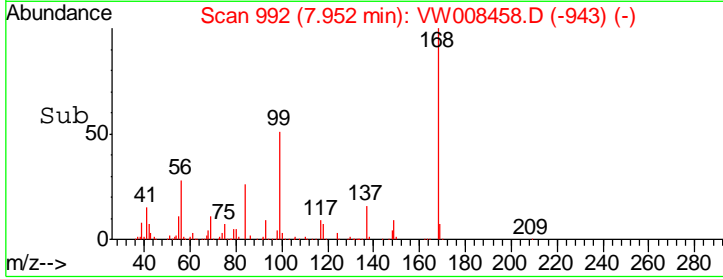
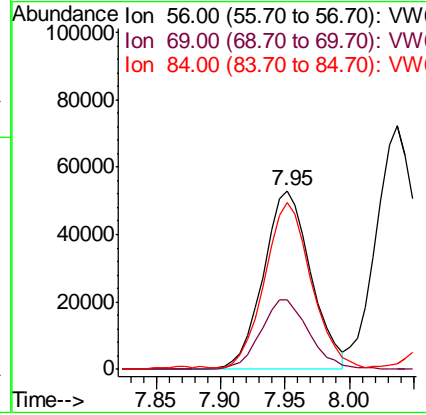
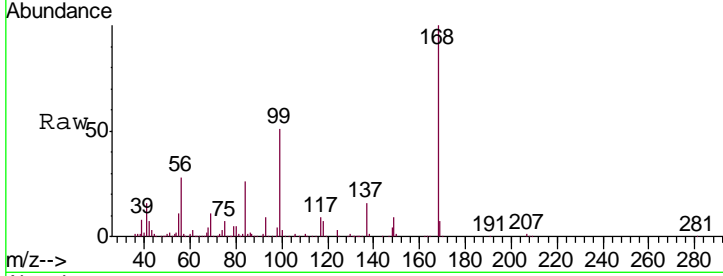




#31
 Cyclohexane
 Concen: 15.967 ug/l
 RT: 7.95 min Scan# 992
 Delta R.T. 0.00 min
 Lab File: VW008458.D
 Acq: 30 Jan 2019 11:51

Instrument :
 MSVOA_W
 ClientSampled :
 VW0130SBSD01

Tgt Ion	Resp	Lower	Upper
56	135051		
69	39.0	26.4	39.6
84	92.0	69.1	103.7



#32
 1,1,1-Trichloroethane
 Concen: 17.604 ug/l
 RT: 7.87 min Scan# 979
 Delta R.T. 0.00 min
 Lab File: VW008458.D
 Acq: 30 Jan 2019 11:51

Tgt Ion	Resp	Lower	Upper
97	122334		
99	63.2	51.3	76.9
61	42.7	36.2	54.4

