

Data Path : Z:\VOASRV\HPCHEM1\MSVOA W\DATA\VW020320\
 Data File : VW014844.D
 Acq On : 03 Feb 2020 19:35
 Operator : SY/VA
 Sample : L1323-03
 Misc : 5.09G/10ML/MSVOA W/SOIL
 ALS Vial : 1 Sample Multiplier: 1

Instrument :
 MSVOA_W
 Client Sampled :
 GAT43

Manual Integrations
 APPROVED

MMDadoda
 2/4/2020 3:39:38 PM

Quant Time: Feb 04 07:38:32 2020
 Quant Method : Z:\VOASRV\HPCHEM1\MSVOA_W\METHOD\SOM2WLM020320S.M
 Quant Title : VOC Analysis
 QLast Update : Tue Feb 04 06:54:20 2020
 Response via : Initial Calibration

Internal Standards	R.T.	QIon	Response	Conc	Units	Dev(Min)
1) 1,4-Difluorobenzene	8.84	114	153689	25.00	ug/L	0.00
28) Chlorobenzene-d5	11.63	117	147442	25.00	ug/L	0.00
60) 1,4-Dichlorobenzene-d4	13.55	152	46471	25.00	ug/L	0.00

System Monitoring Compounds

4) Vinyl Chloride-d3	2.35	65	44318	18.41	ug/L	0.00
Spiked Amount	25.000	Range	30 - 150	Recovery	=	73.64%
7) Chloroethane-d5	2.89	69	53173	23.10	ug/L	0.00
Spiked Amount	25.000	Range	30 - 150	Recovery	=	92.40%
10) 1,1-Dichloroethene-d2	4.01	63	84647	16.55	ug/L	0.00
Spiked Amount	25.000	Range	45 - 110	Recovery	=	66.20%
20) 2-Butanone-d5	7.09	46	48273	53.36	ug/L	0.01
Spiked Amount	50.000	Range	20 - 135	Recovery	=	106.72%
24) Chloroform-d	7.65	84	130736	26.72	ug/L	0.00
Spiked Amount	25.000	Range	40 - 150	Recovery	=	106.88%
26) 1,2-Dichloroethane-d4	8.31	65	81143m	29.50	ug/L	0.00
Spiked Amount	25.000	Range	70 - 130	Recovery	=	118.00%
29) Benzene-d6	8.27	84	251465	24.19	ug/L	0.00
Spiked Amount	25.000	Range	20 - 135	Recovery	=	96.76%
33) 1,2-Dichloropropane-d6	9.27	67	91468	26.85	ug/L	0.00
Spiked Amount	25.000	Range	70 - 120	Recovery	=	107.40%
37) Toluene-d8	10.32	98	187142	20.63	ug/L	0.00
Spiked Amount	25.000	Range	30 - 130	Recovery	=	82.52%
38) trans-1,3-Dichloropropene-	10.57	79	30195	22.39	ug/L	0.00
Spiked Amount	25.000	Range	30 - 135	Recovery	=	89.56%
39) 2-Hexanone-d5	10.93	63	27569	41.34	ug/L	0.00
Spiked Amount	50.000	Range	20 - 135	Recovery	=	82.68%
48) 1,1,2,2-Tetrachloroethane-	12.69	84	67357	25.38	ug/L	0.00
Spiked Amount	25.000	Range	45 - 120	Recovery	=	101.52%
61) 1,2-Dichlorobenzene-d4	13.85	152	52518	26.97	ug/L	0.00
Spiked Amount	25.000	Range	75 - 120	Recovery	=	107.88%

Target Compounds					Ovalue
13) Acetone	4.13	43	20384	20.834	ug/L 98
16) Methylene chloride	4.92	84	8558	3.016	ug/L 90
44) Toluene	10.38	91	18234	1.765	ug/L 97

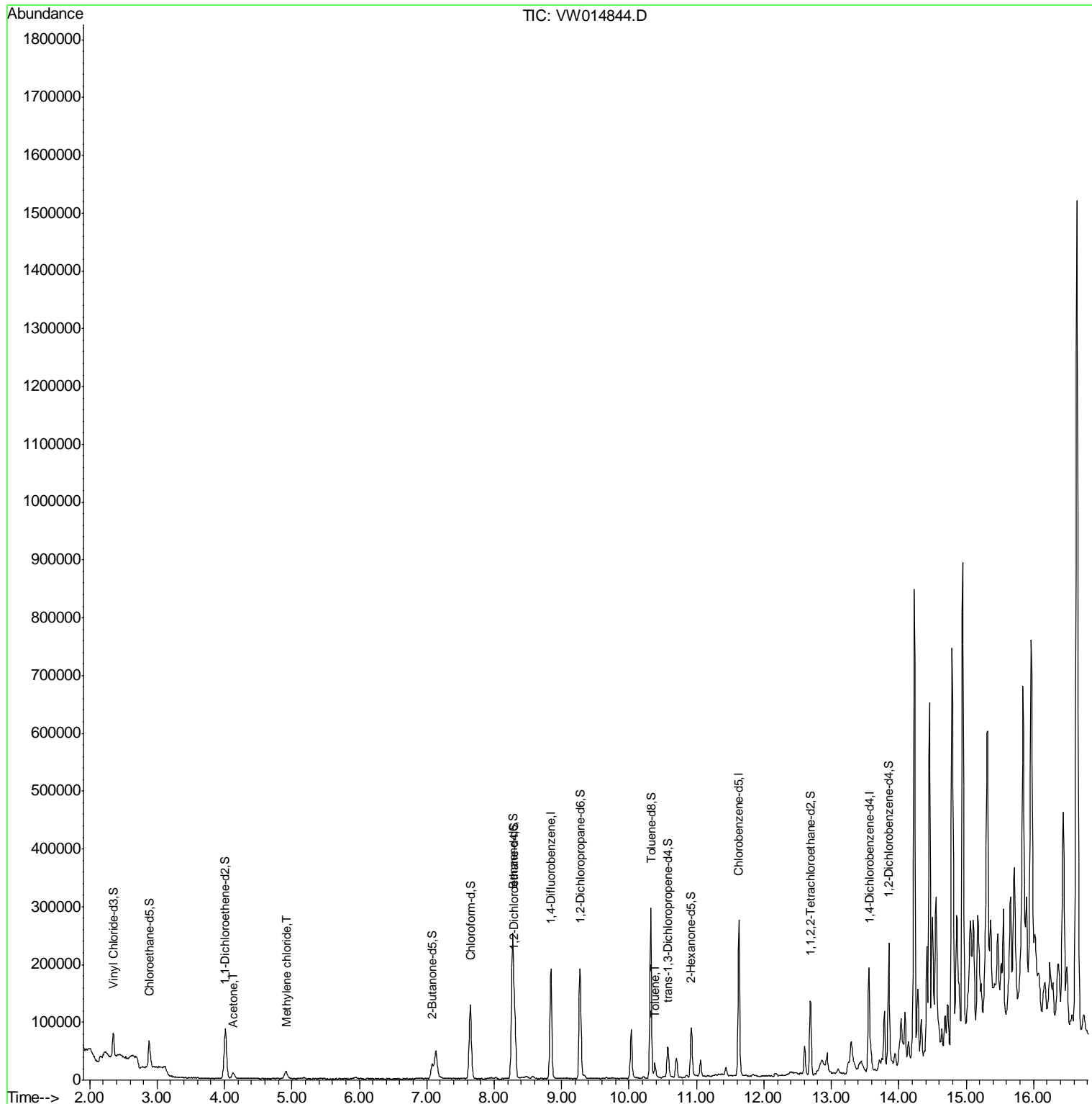
(#) = qualifier out of range (m) = manual integration (+) = signals summed

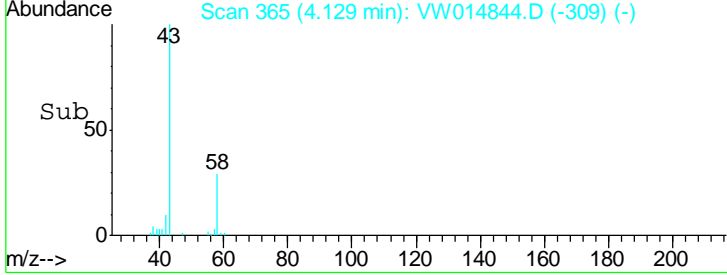
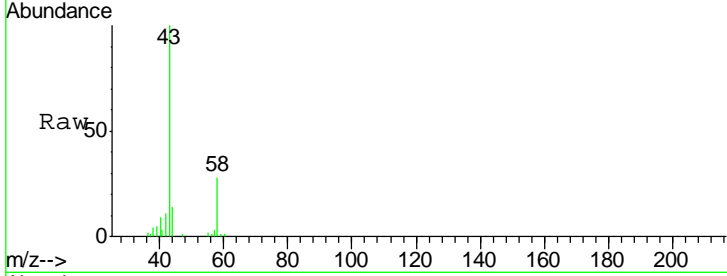
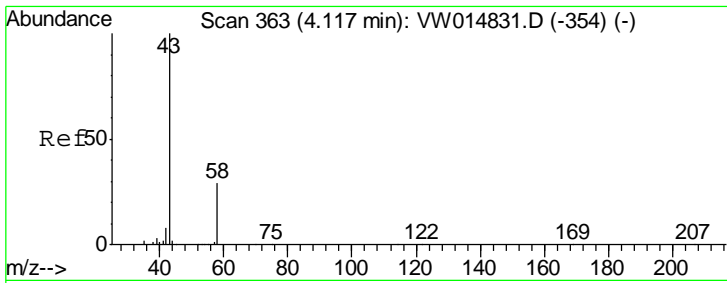
Data Path : Z:\VOASRV\HPCHEM1\MSVOA W\DATA\VW020320\
 Data File : VW014844.D
 Acq On : 03 Feb 2020 19:35
 Operator : SY/VA
 Sample : L1323-03
 Misc : 5.09G/10ML/MSVOA W/SOIL
 ALS Vial : 1 Sample Multiplier: 1

Instrument :
 MSVOA_W
Client Sampled :
 GAT43

Manual Integrations
APPROVED
 MMDadoda
 2/4/2020 3:39:38 PM

Quant Time: Feb 04 07:38:32 2020
 Quant Method : Z:\VOASRV\HPCHEM1\MSVOA_W\METHOD\SOM2WLM020320S.M
 Quant Title : VOC Analysis
 QLast Update : Tue Feb 04 06:54:20 2020
 Response via : Initial Calibration



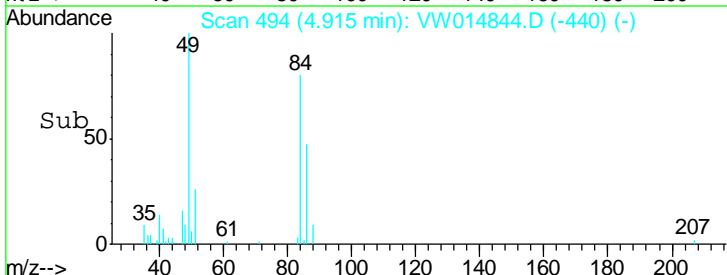
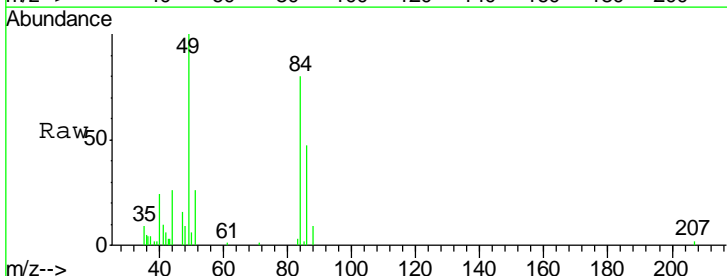
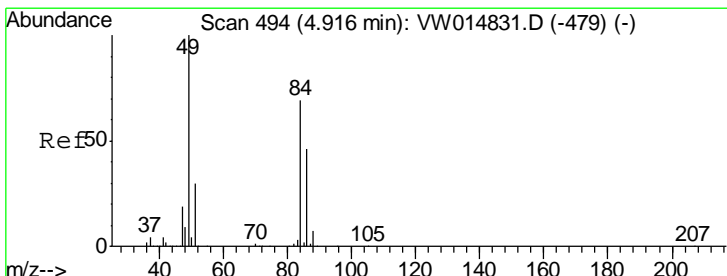
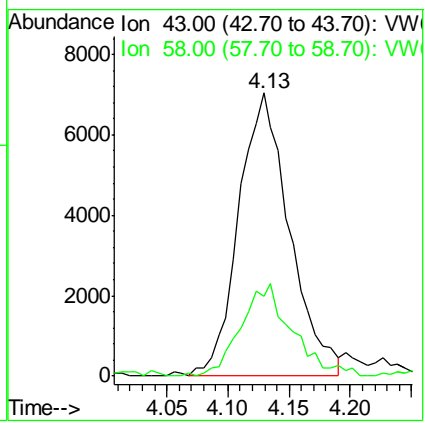


#13
 Acetone
 Concen: 20.834 ug/L
 RT: 4.13 min Scan# 365
 Delta R.T. 0.01 min
 Lab File: VW014844.D
 Acq: 03 Feb 2020 19:35

Tgt Ion	Ratio	Lower	Upper
43	100		
58	31.3	0.0	60.2

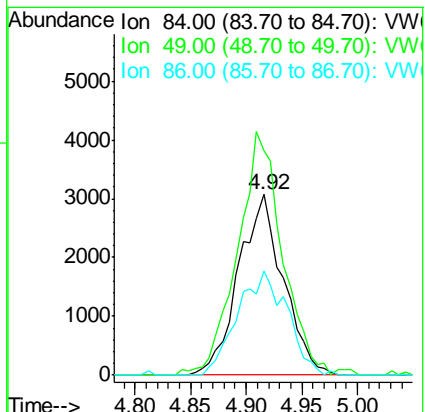
Instrument : MSVOA_W
 ClientSampled : GAT43

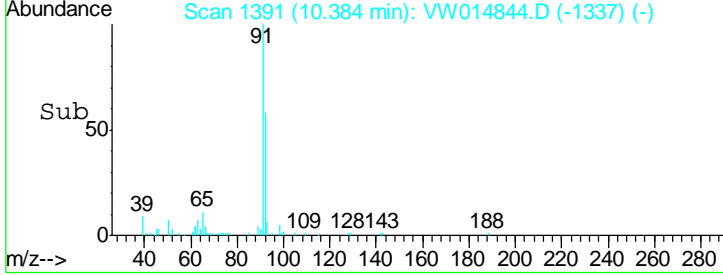
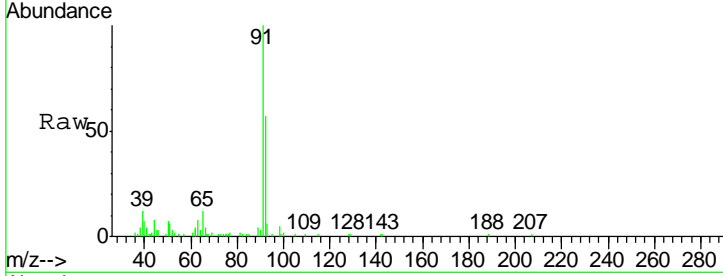
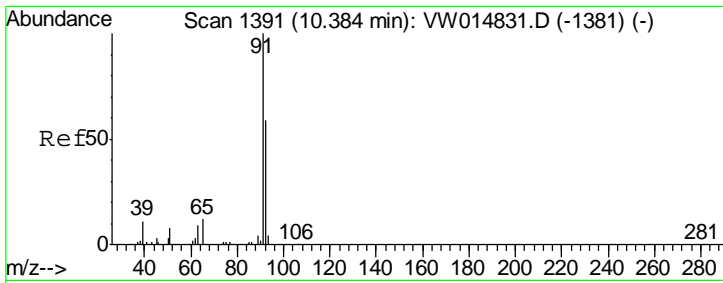
Manual Integrations APPROVED
 MMDadoda
 2/4/2020 3:39:38 PM



#16
 Methylene chloride
 Concen: 3.016 ug/L
 RT: 4.92 min Scan# 494
 Delta R.T. -0.00 min
 Lab File: VW014844.D
 Acq: 03 Feb 2020 19:35

Tgt Ion	Ratio	Lower	Upper
84	100		
49	124.3	96.6	179.4
86	58.0	43.8	81.4





#44
 Toluene
 Concen: 1.765 ug/L
 RT: 10.38 min Scan# 1391
 Delta R.T. -0.00 min
 Lab File: VW014844.D
 Acq: 03 Feb 2020 19:35

Tot Ion	Ion	Ratio	Lower	Upper
18234	91	100		
	92	57.2	41.6	77.2

Instrument :
 MSVOA_W
ClientSampled :
 GAT43

Manual Integrations
APPROVED
 MMDadoda
 2/4/2020 3:39:38 PM

