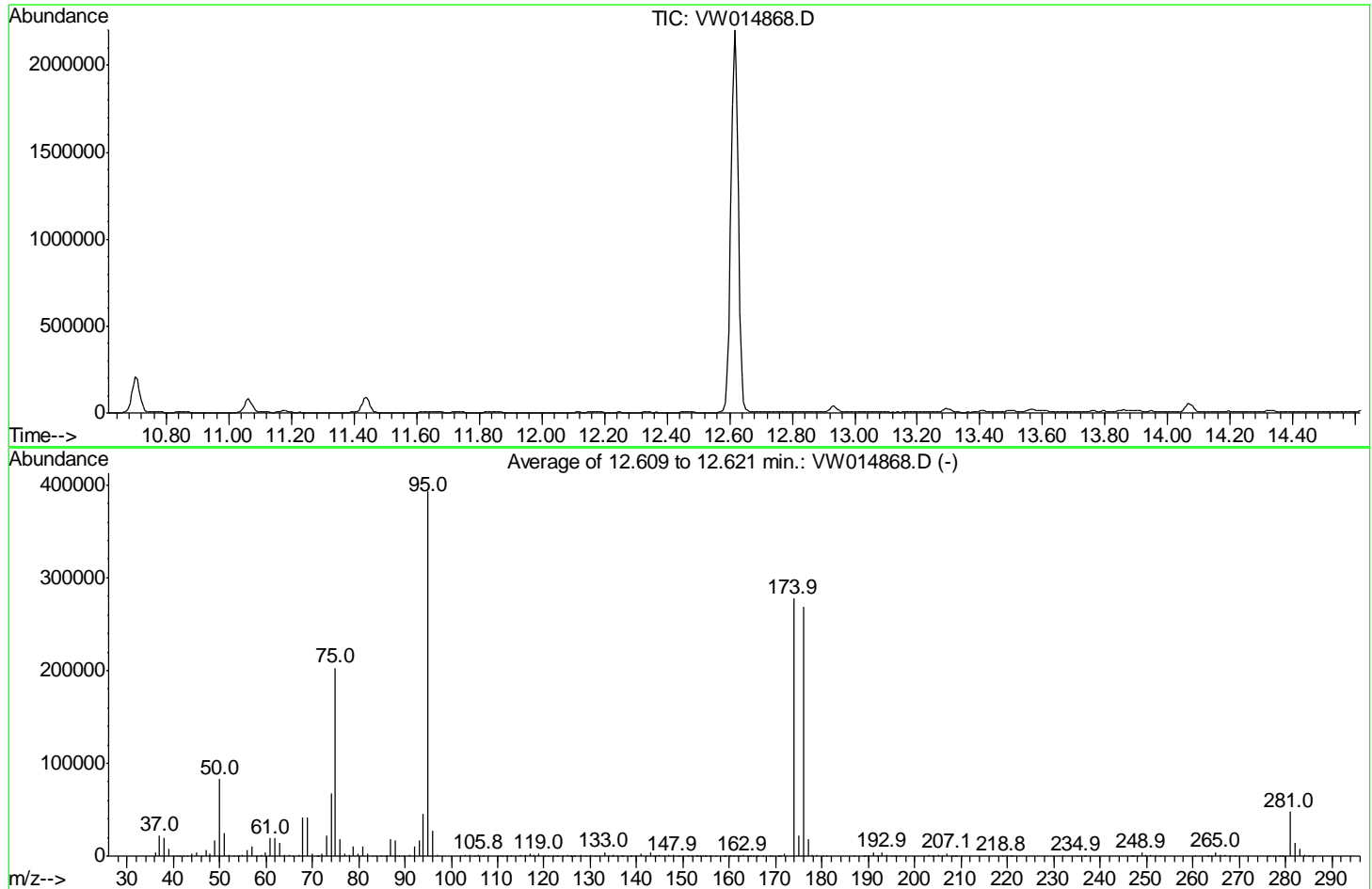


Data Path : Z:\voasrv\HPCHEM1\MSVOA_W\Data\VW020520\
 Data File : VW014868.D
 Acq On : 05 Feb 2020 11:48
 Operator : SY/VA
 Sample : BFB28
 Misc : 5.00G/10ML/MSVOA_W/SOIL
 ALS Vial : 1 Sample Multiplier: 1

Instrument :
 MSVOA_W
 ClientSampleId :
 BFB28

Integration File: LSCINT.P

Method : Z:\VOASRV\HPCHEM1\MSVOA_W\METHOD\SOM2WLM020520S.M
 Title : VOC Analysis
 Last Update : Wed Feb 05 13:26:01 2020



AutoFind: Scans 1756, 1757, 1758; Background Corrected with Scan 1747

Target Mass	Rel. to Mass	Lower Limit%	Upper Limit%	Rel. Abn%	Raw Abn	Result Pass/Fail
50	95	15	40	21.0	82533	PASS
75	95	30	80	51.5	202555	PASS
95	95	100	100	100.0	393109	PASS
96	95	5	9	6.8	26744	PASS
173	174	0.00	2	0.0	0	PASS
174	95	50	120	70.6	277376	PASS
175	174	5	9	7.8	21765	PASS
176	174	95	101	96.8	268522	PASS
177	176	5	9	7.0	18702	PASS

m/z	Abundance
36.00	3552.0
37.10	21416.0
38.10	18688.0
39.10	7777.0
40.00	799.0
40.90	258.0
41.80	74.0
42.30	56.0
43.10	459.0
44.00	3024.0
45.00	4606.0
46.00	546.0
47.00	5848.0
48.00	2242.0
49.00	15743.0
50.00	75784.0
51.00	22408.0
52.10	1000.0
53.00	267.0
54.10	53.0
55.00	1310.0
56.00	6055.0
57.10	10576.0
58.10	614.0
59.10	895.0
60.00	3454.0
61.00	17632.0
62.00	16600.0
63.00	13140.0
64.00	1627.0
65.00	2092.0
65.90	215.0
67.00	881.0
68.00	38080.0
69.00	36184.0
70.00	2795.0
70.90	277.0
72.00	1855.0
73.00	22456.0
74.00	60144.0
75.00	183744.0
76.00	15946.0
77.00	2083.0
78.00	1907.0
78.90	9577.0
80.00	2733.0
81.00	9716.0
81.90	2055.0
83.00	420.0
83.80	98.0
85.00	226.0
85.90	747.0
87.00	17072.0
88.00	15965.0
89.80	51.0
91.00	1214.0
92.00	9439.0
93.00	15015.0
94.00	38952.0
95.00	350464.0
96.00	25064.0
97.00	654.0
101.90	182.0
103.00	1332.0
103.90	1436.0
104.90	588.0
105.80	1444.0
106.80	278.0
109.90	648.0
111.00	626.0
112.00	355.0
112.90	436.0
115.00	791.0
115.90	869.0
117.00	2134.0
117.90	1821.0
119.00	2857.0
119.90	151.0
120.90	186.0
121.90	72.0
123.10	134.0
124.00	213.0
125.10	2513.0
126.00	1059.0
126.80	145.0
128.00	1202.0
129.00	586.0
130.00	907.0
130.90	622.0
133.00	5900.0
134.90	962.0
135.80	153.0

Instrument :
MSVOA_W
ClientSampleId :
BFB28

136.70	396.0
138.70	90.0
139.70	429.0
140.90	2618.0
142.00	310.0
143.00	3385.0
143.90	161.0
145.00	797.0
145.90	424.0
146.90	938.0
147.90	611.0
149.00	583.0
149.90	344.0
151.80	154.0
152.80	184.0
154.20	134.0
154.80	673.0
156.00	125.0
157.00	449.0
159.10	537.0
160.00	53.0
161.10	730.0
161.70	209.0
163.00	1131.0
163.70	218.0
165.10	616.0
165.80	146.0
167.00	132.0
168.80	250.0
169.40	103.0
170.90	498.0
172.00	1893.0
173.90	221312.0
175.00	17320.0
175.90	207168.0
176.90	16123.0
178.00	765.0
178.90	1397.0
180.10	205.0
181.10	166.0
186.80	71.0
189.00	545.0
190.10	448.0
191.00	4455.0
191.90	985.0
192.90	6129.0
194.00	1571.0
195.10	623.0
196.10	159.0
196.70	54.0
203.00	874.0
204.10	140.0
205.00	941.0
205.90	376.0
207.10	4133.0
208.00	924.0
208.90	429.0
210.00	52.0
219.00	123.0
220.70	296.0
232.00	57.0
235.00	565.0
235.90	115.0
236.90	146.0
246.60	67.0
247.20	143.0
248.00	138.0
249.00	4842.0
249.90	1352.0
250.90	1826.0
251.90	340.0
252.90	140.0
263.40	111.0
264.00	213.0
265.00	5045.0
266.00	1750.0
267.00	1988.0
268.00	425.0
269.10	124.0
276.10	62.0
276.70	142.0
277.40	65.0
278.60	245.0
279.20	440.0
281.00	60976.0
282.00	18368.0
283.00	11456.0
284.10	1849.0
284.80	875.0
286.10	84.0

Instrument :
MSVOA_W
ClientSampleId :
BFB28

m/z	Abundance
36.00	5066.0
37.10	24440.0
38.00	20872.0
39.10	8356.0
40.00	649.0
41.00	211.0
41.80	91.0
42.20	102.0
43.00	403.0
44.00	3641.0
45.00	5063.0
46.10	450.0
47.00	7747.0
48.00	2861.0
49.00	19344.0
50.00	92768.0
51.00	29440.0
52.00	1207.0
53.10	346.0
53.80	83.0
55.00	1256.0
56.00	7166.0
57.00	11583.0
57.90	554.0
59.10	926.0
60.00	4013.0
61.00	20800.0
62.00	21416.0
63.00	15552.0
64.00	2070.0
65.00	1568.0
65.90	253.0
67.10	1177.0
68.00	46440.0
69.00	48424.0
70.10	3560.0
71.10	322.0
72.00	2530.0
73.00	23304.0
74.00	76368.0
75.00	226112.0
76.00	19944.0
77.00	2203.0
77.90	2156.0
78.90	11893.0
79.90	3364.0
80.90	11797.0
82.00	2345.0
83.10	403.0
83.80	103.0
84.80	154.0
86.10	855.0
87.00	20752.0
88.00	19744.0
90.90	1262.0
92.00	12041.0
93.00	17824.0
94.00	50592.0
95.00	437568.0
96.00	29480.0
97.00	1064.0
102.90	803.0
104.00	1809.0
104.90	888.0
105.90	1725.0
106.90	390.0
110.00	637.0
110.90	662.0
111.70	398.0
112.20	307.0
112.90	414.0
115.00	1096.0
115.90	1218.0
116.90	2618.0
117.90	1638.0
119.00	2829.0
119.80	97.0
120.20	51.0
121.00	179.0
121.90	140.0
123.00	152.0
123.90	235.0
124.90	1865.0
125.80	512.0
126.60	145.0
128.00	1410.0
129.00	906.0
130.00	1474.0
131.00	807.0
131.80	73.0
133.00	3954.0
133.80	1145.0

Instrument :
MSVOA_W
ClientSampleId :
BFB28

135.00	860.0
135.80	80.0
136.90	690.0
138.90	182.0
140.10	381.0
140.90	3061.0
141.90	380.0
143.00	4279.0
144.10	278.0
145.00	1108.0
145.90	693.0
147.00	734.0
148.00	949.0
148.90	461.0
149.90	302.0
151.70	253.0
152.80	227.0
153.20	168.0
154.10	245.0
155.00	1066.0
156.00	67.0
156.90	658.0
158.80	413.0
161.00	638.0
162.10	170.0
162.90	829.0
163.80	186.0
164.70	516.0
166.00	131.0
167.10	79.0
168.80	123.0
169.30	195.0
170.60	322.0
171.90	2288.0
173.90	305408.0
175.00	24064.0
175.90	299776.0
176.90	20752.0
177.90	974.0
179.00	983.0
180.00	319.0
180.90	70.0
189.00	507.0
191.00	4163.0
191.90	805.0
193.00	4627.0
194.00	825.0
195.10	511.0
196.20	80.0
202.90	490.0
203.10	500.0
203.90	75.0
205.10	872.0
205.90	341.0
207.00	3429.0
208.00	645.0
208.70	224.0
209.20	293.0
210.00	109.0
218.80	188.0
219.90	138.0
220.90	318.0
234.90	387.0
235.80	61.0
236.80	156.0
246.70	86.0
248.90	3506.0
250.00	948.0
250.90	1393.0
251.90	302.0
252.90	416.0
263.10	57.0
265.00	5005.0
266.10	1023.0
267.00	1209.0
268.00	161.0
268.90	82.0
275.90	78.0
277.50	84.0
278.50	266.0
279.60	719.0
281.00	51384.0
282.10	16253.0
283.10	7809.0
284.10	1639.0
284.90	533.0
286.10	101.0

Instrument :
MSVOA_W
ClientSampleId :
BFB28

m/z	Abundance
36.10	4154.0
37.00	20376.0
38.00	18472.0
39.10	7658.0
40.00	1016.0
41.30	63.0
42.20	50.0
43.00	268.0
44.00	2992.0
45.00	4071.0
46.20	510.0
47.00	4921.0
48.00	2681.0
49.00	15535.0
50.00	79048.0
51.00	23376.0
52.10	886.0
53.10	171.0
53.90	149.0
55.00	982.0
56.00	6096.0
57.00	10072.0
58.10	474.0
59.00	493.0
60.00	3907.0
61.00	18640.0
62.00	18920.0
63.00	13408.0
64.00	1944.0
65.00	1476.0
65.80	84.0
67.00	949.0
68.00	39408.0
69.00	39904.0
70.00	3056.0
71.20	160.0
72.00	1944.0
73.00	19648.0
74.00	65288.0
75.00	198144.0
76.00	17760.0
77.00	2373.0
78.10	1701.0
78.90	9974.0
80.00	2976.0
81.00	10859.0
81.90	2424.0
83.10	225.0
86.90	18168.0
88.00	16664.0
88.80	484.0
89.70	84.0
90.90	1395.0
92.00	10651.0
93.00	16728.0
94.00	46256.0
95.00	391296.0
96.00	25688.0
96.90	715.0
101.80	86.0
102.90	674.0
104.00	1773.0
105.00	509.0
105.90	1630.0
106.80	311.0
107.80	100.0
109.80	330.0
110.60	426.0
111.00	341.0
112.00	359.0
112.90	316.0
114.90	553.0
115.90	1114.0
116.90	2417.0
117.90	1281.0
118.90	2142.0
120.10	248.0
121.00	242.0
122.00	110.0
122.80	143.0
123.80	275.0
124.80	926.0
125.70	458.0
126.40	204.0
127.90	1249.0
128.80	538.0
129.90	902.0
131.00	472.0
131.90	111.0
133.00	2648.0
133.90	489.0
134.70	594.0

Instrument :
MSVOA_W
ClientSampleId :
BFB28

135.00	478.0
135.70	151.0
136.90	624.0
138.90	160.0
139.90	373.0
140.90	2869.0
141.90	387.0
142.90	3997.0
143.90	251.0
144.80	484.0
145.80	685.0
146.80	516.0
147.80	1025.0
148.90	396.0
149.90	500.0
151.10	73.0
151.90	191.0
152.90	251.0
153.70	167.0
155.00	679.0
155.70	118.0
156.90	708.0
158.90	544.0
160.20	60.0
160.90	590.0
162.20	102.0
162.90	418.0
164.20	140.0
164.90	271.0
166.10	94.0
168.90	119.0
169.30	94.0
170.60	175.0
171.10	332.0
172.00	1910.0
173.90	305408.0
175.00	23912.0
175.90	298624.0
177.00	19232.0
177.90	825.0
178.90	613.0
180.10	237.0
189.20	161.0
189.80	272.0
190.90	1909.0
192.10	464.0
193.00	2454.0
193.90	640.0
194.90	308.0
195.80	81.0
203.00	312.0
203.80	80.0
204.90	404.0
205.00	402.0
205.90	235.0
207.00	1671.0
207.90	406.0
208.30	503.0
209.10	204.0
218.80	128.0
219.90	87.0
220.80	74.0
234.80	313.0
236.50	104.0
246.90	83.0
248.90	2193.0
250.00	439.0
251.00	854.0
251.80	299.0
252.90	144.0
260.50	66.0
263.90	98.0
265.00	2989.0
265.90	559.0
266.10	562.0
267.10	575.0
268.00	251.0
268.80	79.0
278.80	218.0
279.40	271.0
281.00	30744.0
282.00	9593.0
283.00	5540.0
284.00	1449.0
285.10	370.0

Instrument :
MSVOA_W
ClientSampleId :
BFB28

m/z	Abundance
35.10	59.0
35.80	109.0
37.90	132.0
39.10	85.0
40.00	744.0
40.90	122.0
41.80	94.0
42.80	192.0
44.10	948.0
55.00	150.0
56.40	64.0
59.80	52.0
62.80	52.0
68.80	167.0
70.10	58.0
72.90	81.0
73.20	85.0
75.00	111.0
119.00	90.0
169.20	106.0
207.10	104.0

Instrument :
MSVOA_W
ClientSampleId :
BFB28