

Data File : VW008518.D  
 Acq On : 06 Feb 2019 10:51  
 Operator : SY/VA  
 Sample : VW0206SBL01  
 Misc : 5.00G/5ML/MSVOA\_W/SOIL  
 ALS Vial : 3 Sample Multiplier: 1

Instrument :  
 MSVOA\_W  
 ClientSampleId :  
 VW0206SBL01

Quant Time: Feb 07 01:45:38 2019  
 Quant Method : Z:\VOASRV\HPCHEM1\MSVOA\_W\METHOD\82W012419S.M  
 Quant Title : SW846 8260  
 QLast Update : Fri Jan 25 11:07:41 2019  
 Response via : Initial Calibration

Internal Standards	R.T.	QIon	Response	Conc	Units	Dev(Min)
1) Pentafluorobenzene	7.95	168	592183	50.00	ug/l	0.00
34) 1,4-Difluorobenzene	8.84	114	938155	50.00	ug/l	0.00
63) Chlorobenzene-d5	11.63	117	861543	50.00	ug/l	0.00
72) 1,4-Dichlorobenzene-d4	13.56	152	430391	50.00	ug/l	0.00

System Monitoring Compounds

33) 1,2-Dichloroethane-d4	8.30	65	304383	52.32	ug/l	0.00
Spiked Amount				50.000		
			Recovery	=	104.64%	
35) Dibromofluoromethane	7.88	113	294210	53.63	ug/l	0.00
Spiked Amount				50.000		
			Recovery	=	107.26%	
50) Toluene-d8	10.32	98	1113909	50.64	ug/l	0.00
Spiked Amount				50.000		
			Recovery	=	101.28%	
62) 4-Bromofluorobenzene	12.62	95	417264	49.35	ug/l	0.00
Spiked Amount				50.000		
			Recovery	=	98.70%	

Target Compounds

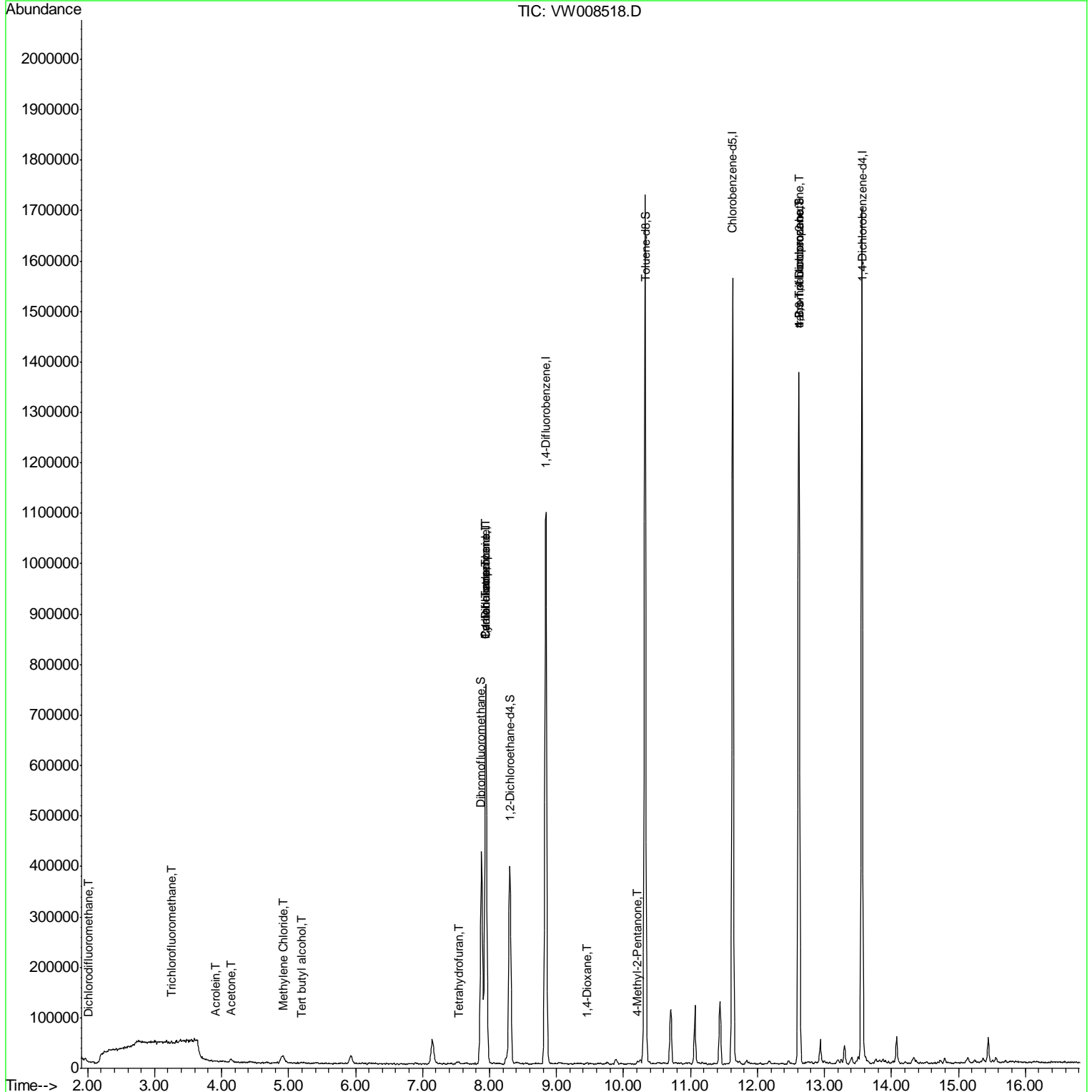
						Qvalue
2) Dichlorodifluoromethane	2.01	85	1508	3.664	ug/l	83
7) Trichlorofluoromethane	3.24	101	475	4.805	ug/l #	74
11) Tert butyl alcohol	5.19	59	1349	2.880	ug/l #	1
13) Acrolein	3.90	56	146	4.533	ug/l #	17
16) Acetone	4.14	43	10723	8.208	ug/l	98
20) Methylene Chloride	4.91	84	14951	2.483	ug/l #	77
29) Tetrahydrofuran	7.54	42	2179	1.895	ug/l #	78
31) Cyclohexane	7.94	56	12088	1.059	ug/l #	1
36) 1,1-Dichloropropene	7.95	75	42591	4.806	ug/l #	51
38) Carbon Tetrachloride	7.95	117	55532	6.227	ug/l #	16
49) 1,4-Dioxane	9.46	88	309	5.797	ug/l #	66
51) 4-Methyl-2-Pentanone	10.21	43	5542	1.377	ug/l	94
76) 1,2,3-Trichloropropane	12.62	75	210660	56.297	ug/l #	1
81) trans-1,4-Dichloro-2-buten	12.62	75	210660	111.191	ug/l #	12

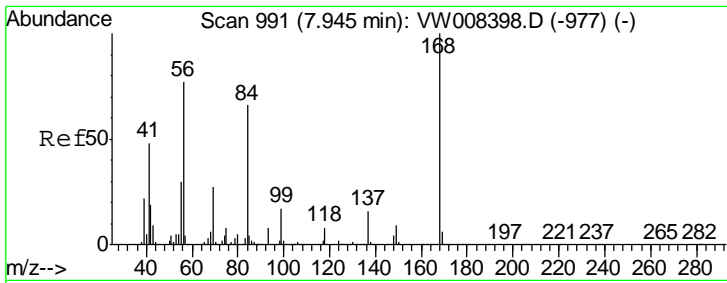
(#) = qualifier out of range (m) = manual integration (+) = signals summed

Data File : VW008518.D  
Acq On : 06 Feb 2019 10:51  
Operator : SY/VA  
Sample : VW0206SBL01  
Misc : 5.00G/5ML/MSVOA\_W/SOIL  
ALS Vial : 3 Sample Multiplier: 1

Instrument :  
MSVOA\_W  
Client Sampled :  
VW0206SBL01

Quant Time: Feb 07 01:45:38 2019  
Quant Method : Z:\VOASRV\HPCHEM1\MSVOA\_W\METHOD\82W012419S.M  
Quant Title : SW846 8260  
QLast Update : Fri Jan 25 11:07:41 2019  
Response via : Initial Calibration

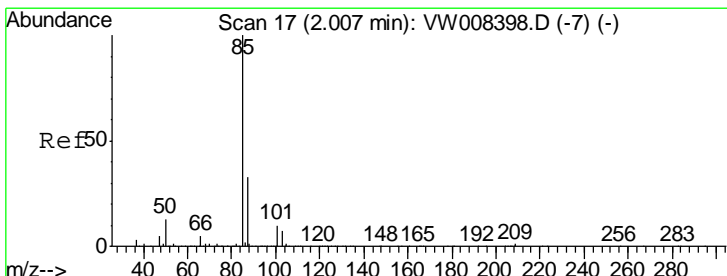
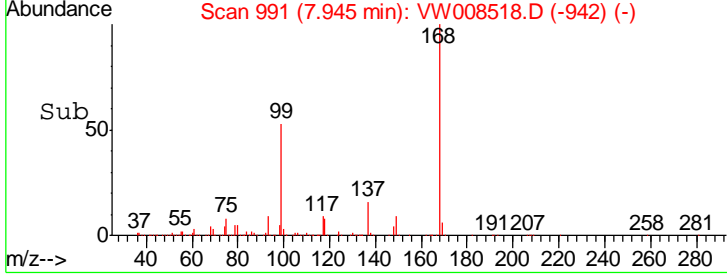
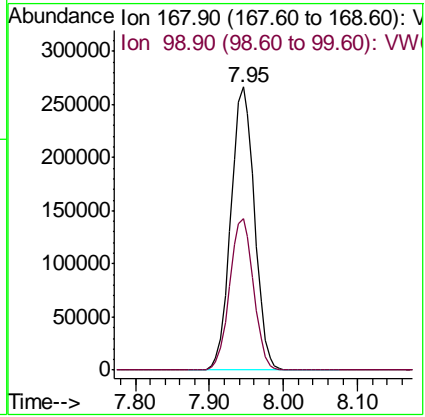
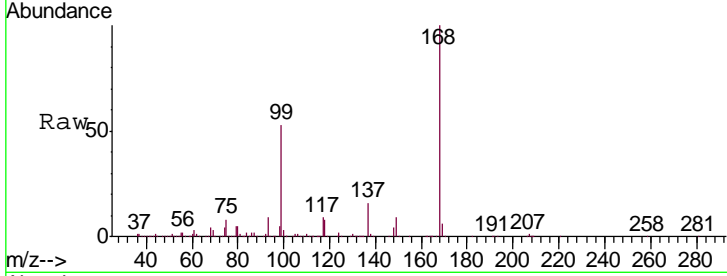




#1  
 Pentafluorobenzene  
 Concen: 50.000 ug/l  
 RT: 7.95 min Scan# 991  
 Delta R.T. 0.00 min  
 Lab File: VW008518.D  
 Acq: 06 Feb 2019 10:51

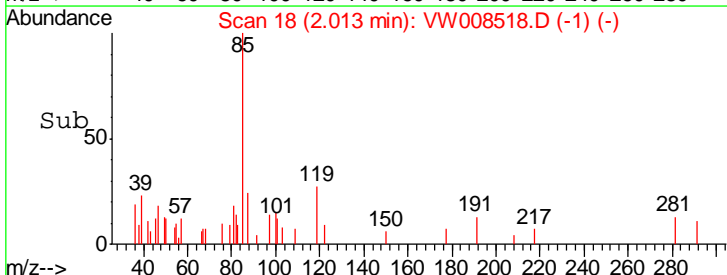
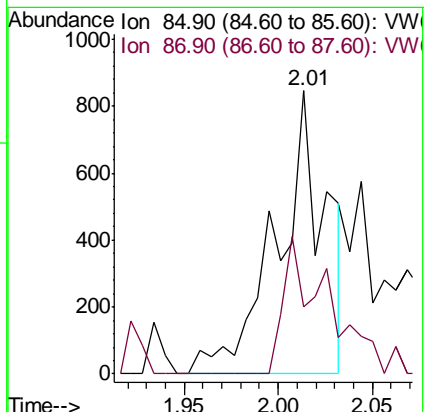
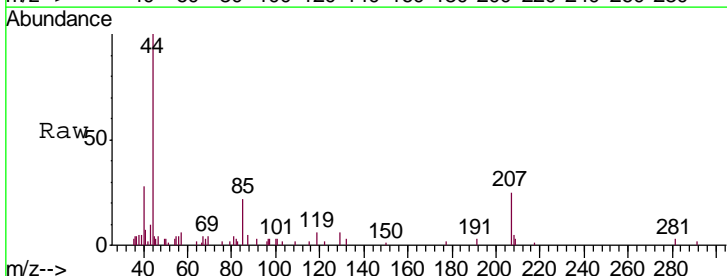
**Instrument :**  
 MSVOA\_W  
**ClientSampled :**  
 VW0206SBL01

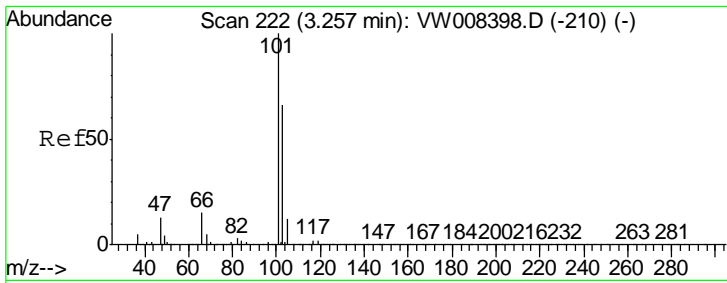
Tgt Ion	Resp	Lower	Upper
168	100		
99	53.4	45.5	68.3



#2  
 Dichlorodifluoromethane  
 Concen: 3.664 ug/l  
 RT: 2.01 min Scan# 18  
 Delta R.T. 0.01 min  
 Lab File: VW008518.D  
 Acq: 06 Feb 2019 10:51

Tgt Ion	Resp	Lower	Upper
85	100		
87	23.8	16.7	50.1

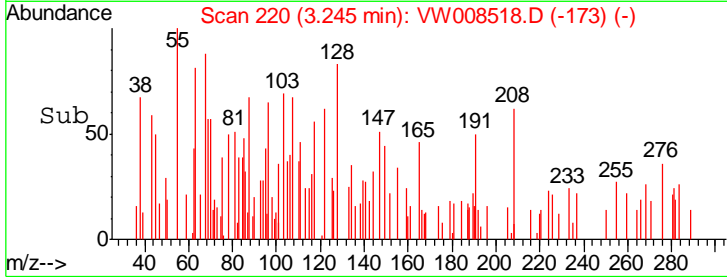
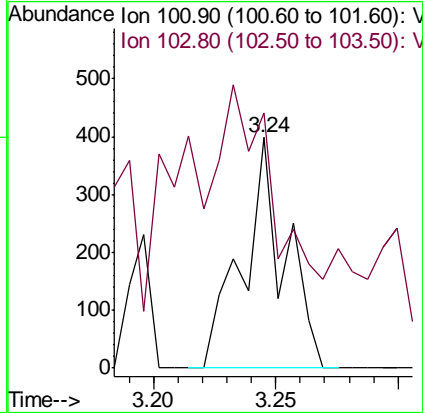
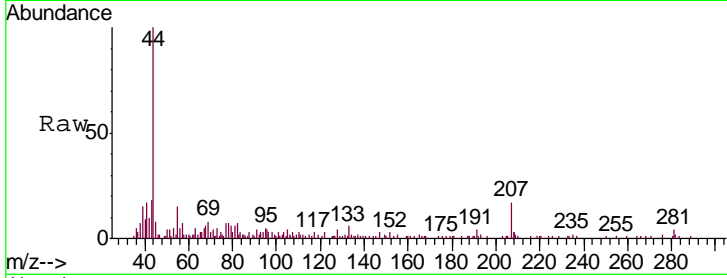




#7  
 Trichlorofluoromethane  
 Concen: 4.805 ug/l  
 RT: 3.24 min Scan# 220  
 Delta R.T. -0.01 min  
 Lab File: VW008518.D  
 Acq: 06 Feb 2019 10:51

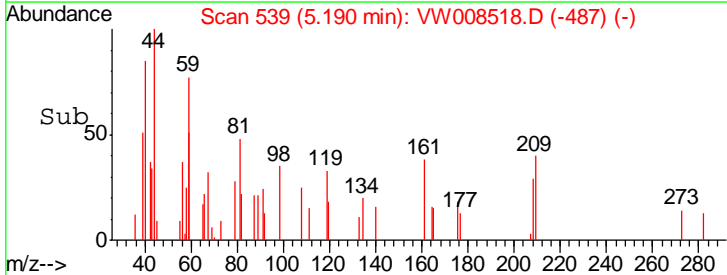
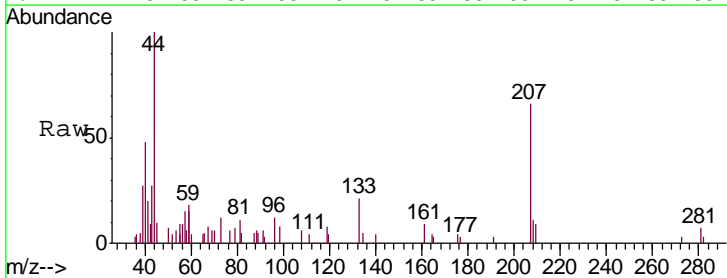
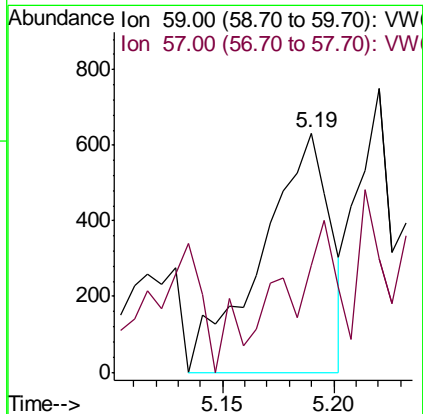
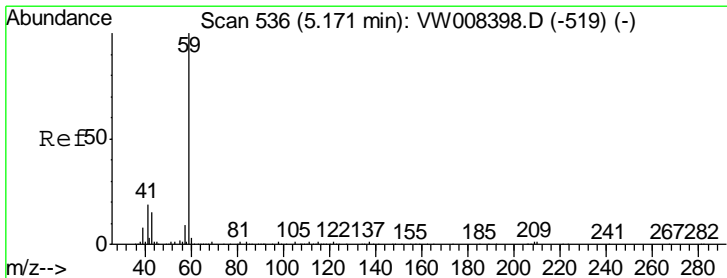
Instrument :  
 MSVOA\_W  
 ClientSampled :  
 VW0206SBL01

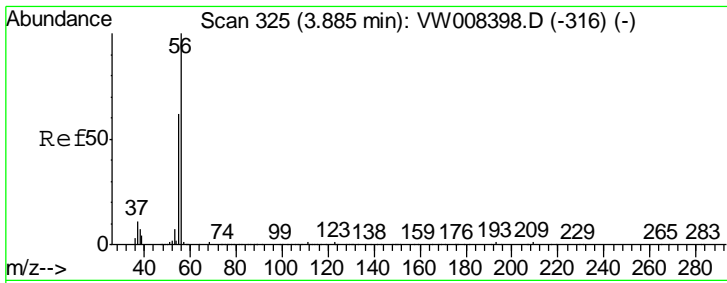
Tgt Ion: 101 Resp: 475  
 Ion Ratio Lower Upper  
 101 100  
 103 45.4 52.5 78.7#



#11  
 Tert butyl alcohol  
 Concen: 2.880 ug/l  
 RT: 5.19 min Scan# 539  
 Delta R.T. 0.02 min  
 Lab File: VW008518.D  
 Acq: 06 Feb 2019 10:51

Tgt Ion: 59 Resp: 1349  
 Ion Ratio Lower Upper  
 59 100  
 57 54.3 9.3 13.9#

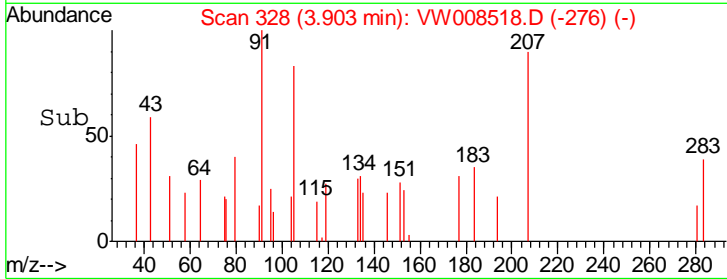
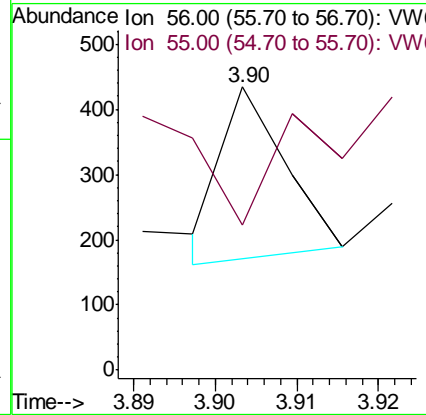
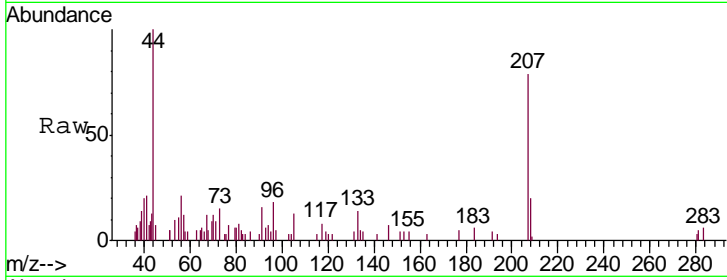




#13  
 Acrolein  
 Concen: 4.533 ug/l  
 RT: 3.90 min Scan# 328  
 Delta R.T. 0.02 min  
 Lab File: VW008518.D  
 Acq: 06 Feb 2019 10:51

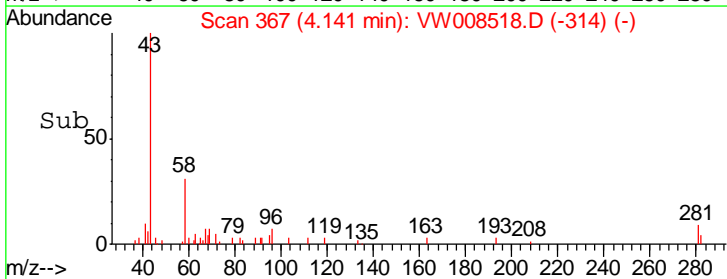
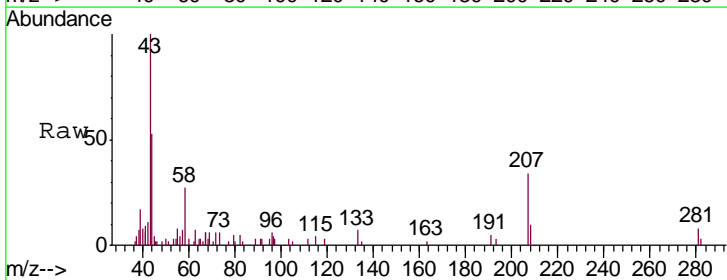
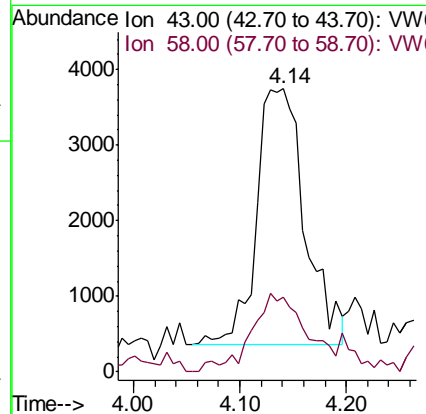
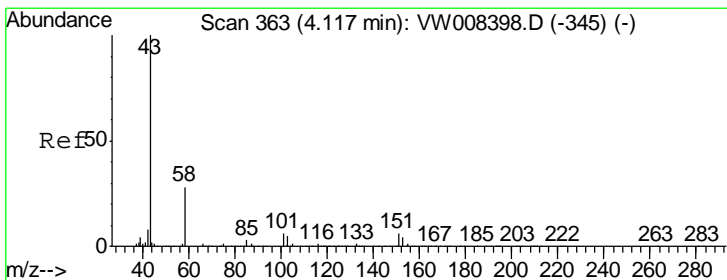
Instrument :  
 MSVOA\_W  
 ClientSampled :  
 VW0206SBL01

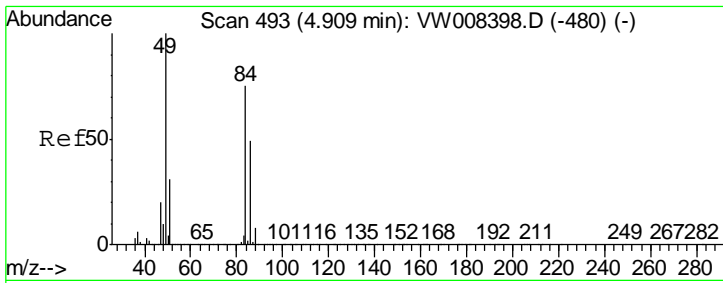
Tgt Ion: 56 Resp: 146  
 Ion Ratio Lower Upper  
 56 100  
 55 139.7 56.7 85.1#



#16  
 Acetone  
 Concen: 8.208 ug/l  
 RT: 4.14 min Scan# 367  
 Delta R.T. 0.02 min  
 Lab File: VW008518.D  
 Acq: 06 Feb 2019 10:51

Tgt Ion: 43 Resp: 10723  
 Ion Ratio Lower Upper  
 43 100  
 58 29.5 22.6 34.0

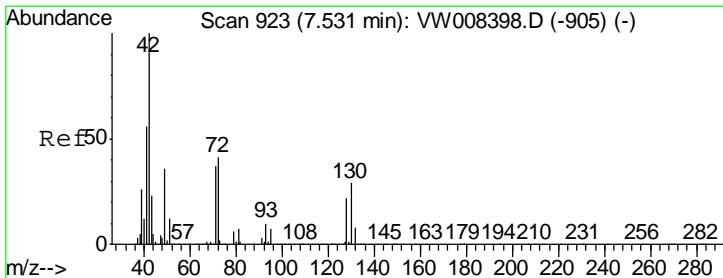
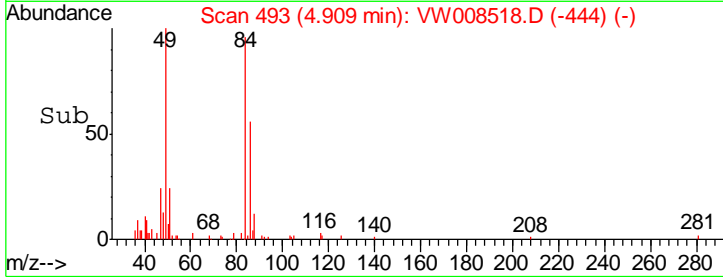
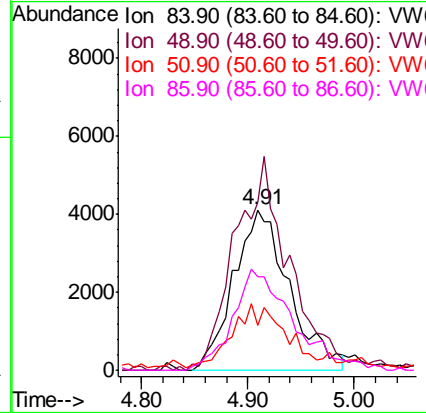
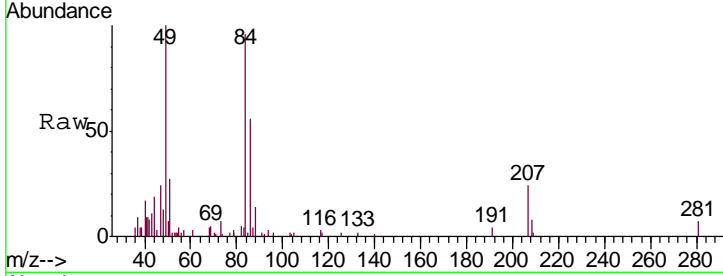




#20  
 Methylene Chloride  
 Concen: 2.483 ug/l  
 RT: 4.91 min Scan# 493  
 Delta R.T. 0.00 min  
 Lab File: VW008518.D  
 Acq: 06 Feb 2019 10:51

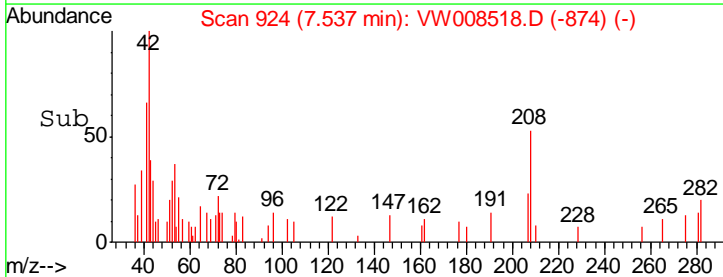
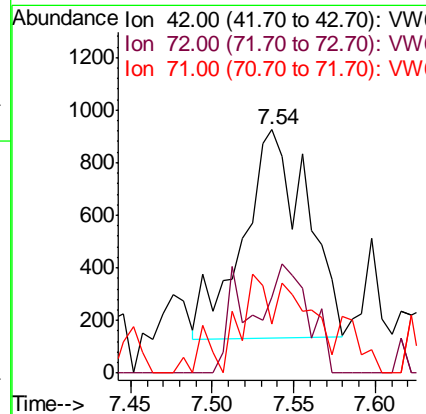
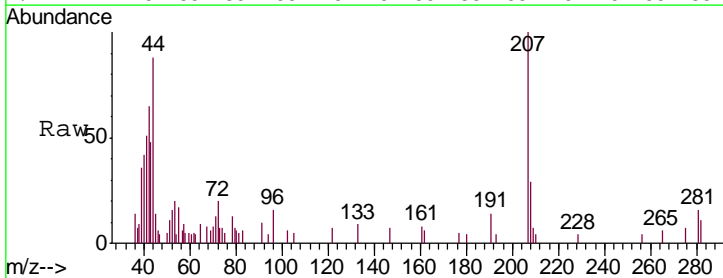
Instrument :  
 MSVOA\_W  
 ClientSampled :  
 VW0206SBL01

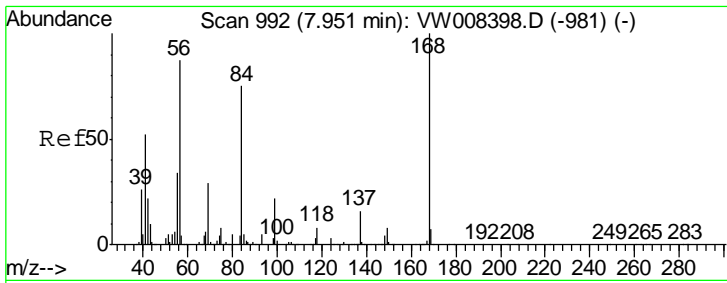
Tgt Ion	Resp	Lower	Upper
84	14951		
49	100.9	106.8	160.2#
51	25.0	32.9	49.3#
86	55.4	52.2	78.2



#29  
 Tetrahydrofuran  
 Concen: 1.895 ug/l  
 RT: 7.54 min Scan# 924  
 Delta R.T. 0.01 min  
 Lab File: VW008518.D  
 Acq: 06 Feb 2019 10:51

Tgt Ion	Resp	Lower	Upper
42	2179		
72	29.7	31.9	47.9#
71	21.1	29.9	44.9#

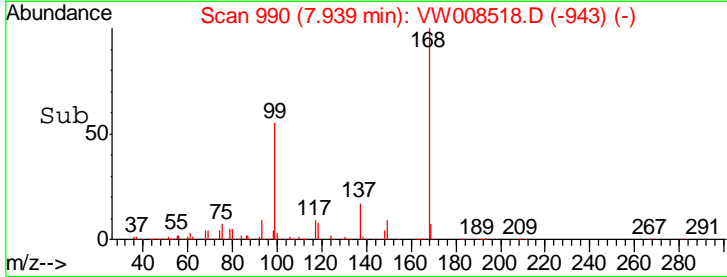
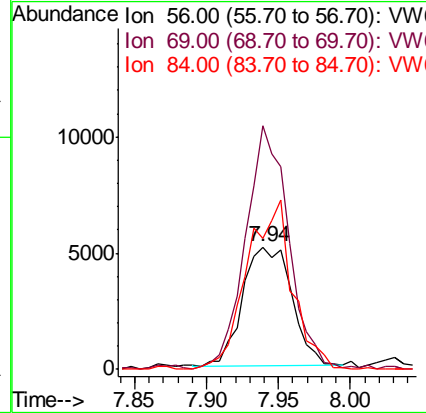
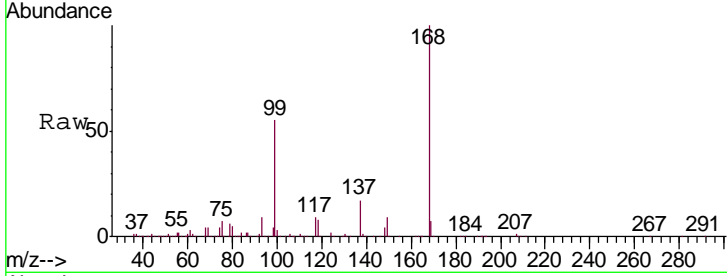




#31  
 Cyclohexane  
 Concen: 1.059 ug/l  
 RT: 7.94 min Scan# 990  
 Delta R.T. -0.01 min  
 Lab File: VW008518.D  
 Acq: 06 Feb 2019 10:51

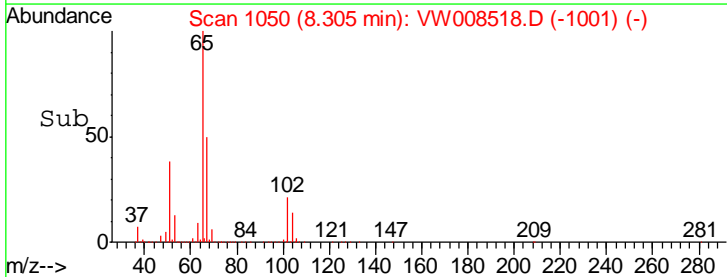
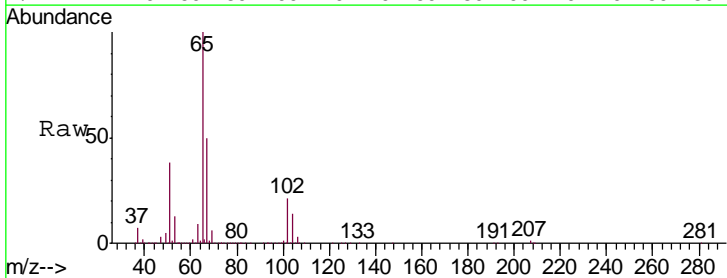
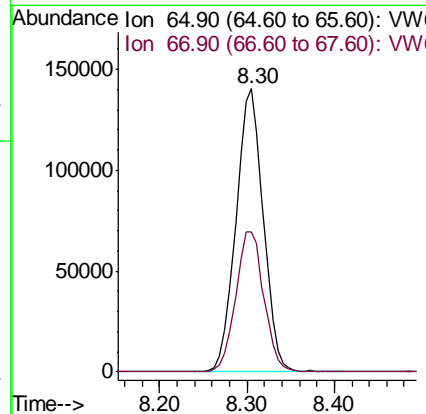
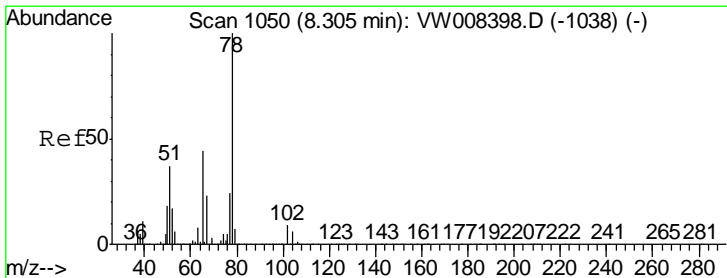
Instrument :  
 MSVOA\_W  
 ClientSampled :  
 VW0206SBL01

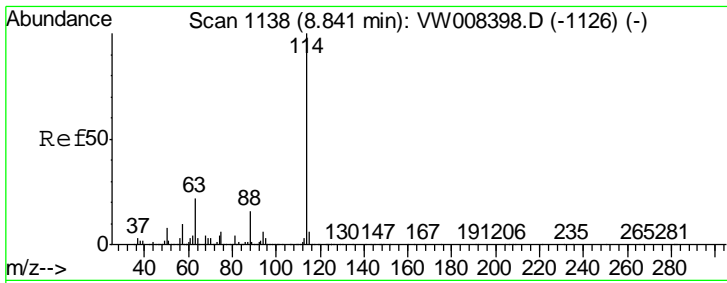
Tgt Ion	Resp	Lower	Upper
56	12088		
69	206.3	26.4	39.6#
84	110.7	69.1	103.7#



#33  
 1,2-Dichloroethane-d4  
 Concen: 52.321 ug/l  
 RT: 8.30 min Scan# 1050  
 Delta R.T. 0.00 min  
 Lab File: VW008518.D  
 Acq: 06 Feb 2019 10:51

Tgt Ion	Resp	Lower	Upper
65	304383		
67	51.1	0.0	104.0

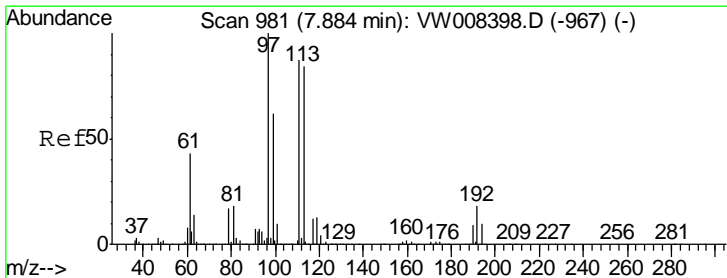
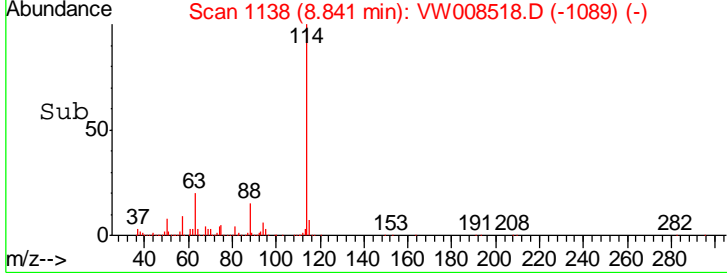
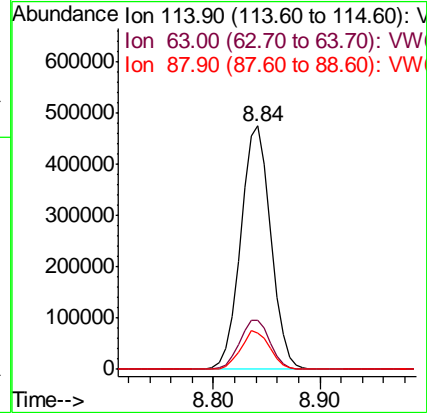
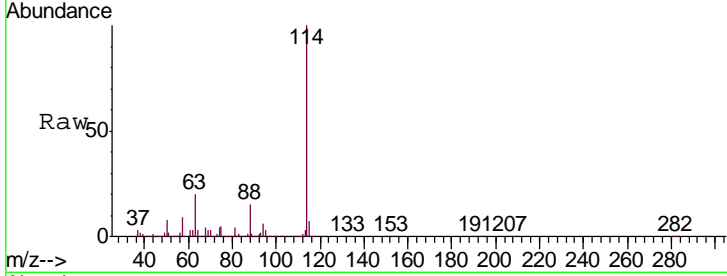




#34  
 1,4-Difluorobenzene  
 Concen: 50.000 ug/l  
 RT: 8.84 min Scan# 1138  
 Delta R.T. 0.00 min  
 Lab File: VW008518.D  
 Acq: 06 Feb 2019 10:51

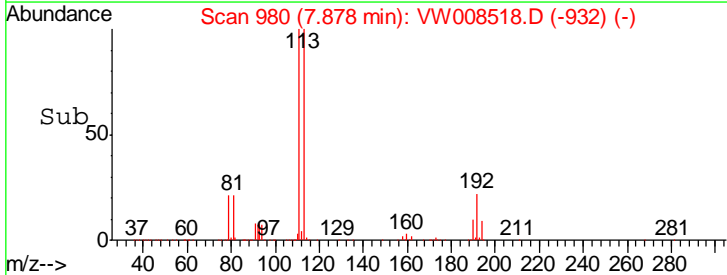
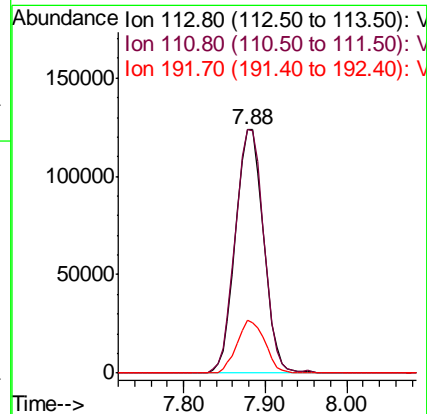
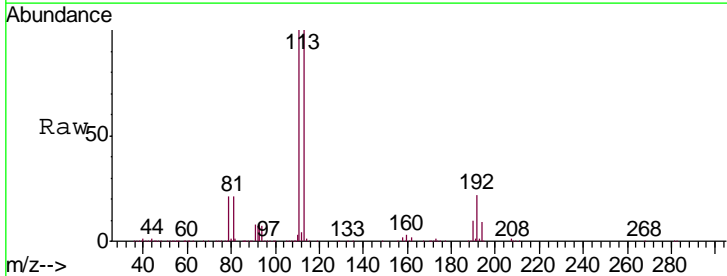
Instrument :  
 MSVOA\_W  
 ClientSampled :  
 VW0206SBL01

Tgt Ion	Resp	Lower	Upper
114	938155		
63	20.4	0.0	43.6
88	15.0	0.0	31.8

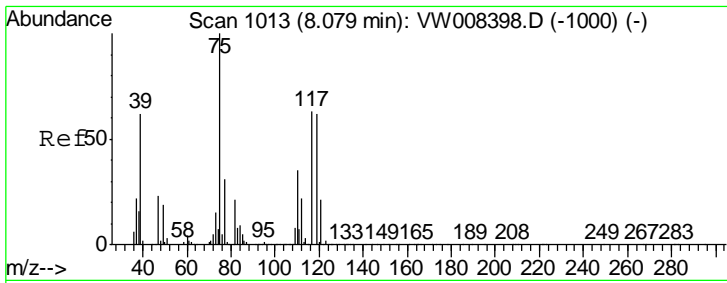


#35  
 Dibromofluoromethane  
 Concen: 53.632 ug/l  
 RT: 7.88 min Scan# 980  
 Delta R.T. -0.01 min  
 Lab File: VW008518.D  
 Acq: 06 Feb 2019 10:51

Tgt Ion	Resp	Lower	Upper
113	294210		
111	101.4	81.0	121.4
192	21.6	16.8	25.2



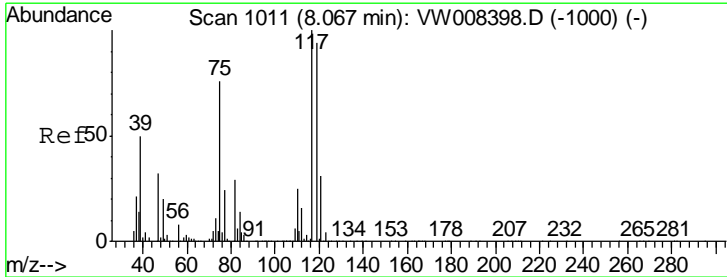
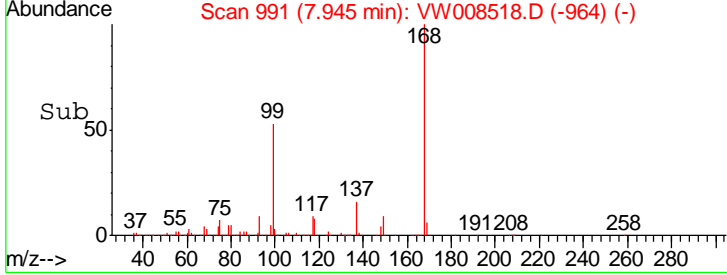
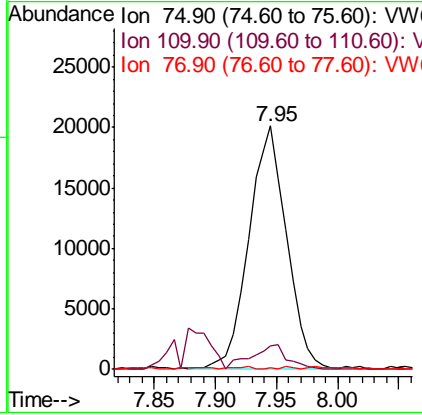
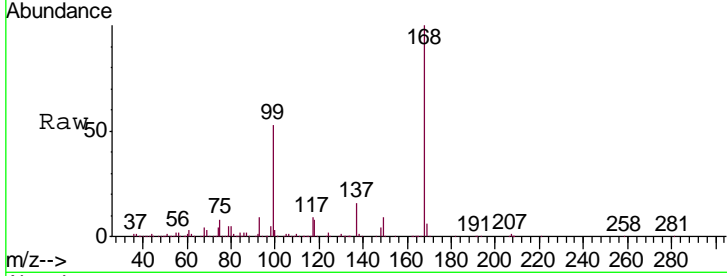




#36  
 1,1-Dichloropropene  
 Concen: 4.806 ug/l  
 RT: 7.95 min Scan# 991  
 Delta R.T. -0.13 min  
 Lab File: VW008518.D  
 Acq: 06 Feb 2019 10:51

Instrument : MSVOA\_W  
 ClientSampled : VW0206SBL01

Tgt Ion	Resp	Lower	Upper
75	100		
110	10.1	17.3	52.0#
77	0.5	24.7	37.1#



#38  
 Carbon Tetrachloride  
 Concen: 6.227 ug/l  
 RT: 7.95 min Scan# 991  
 Delta R.T. -0.12 min  
 Lab File: VW008518.D  
 Acq: 06 Feb 2019 10:51

Tgt Ion	Resp	Lower	Upper
117	100		
119	3.9	75.0	112.4#
121	0.0	24.9	37.3#

