

Data Path : Z:\VOASRV\HPCHEM1\MSVOA W\DATA\VW020719\
 Data File : VW008560.D
 Acq On : 07 Feb 2019 18:36
 Operator : SY/VA
 Sample : K1390-12
 Misc : 5.56G/5ML/MSVOA W/SOIL
 ALS Vial : 19 Sample Multiplier: 1

Instrument :
 MSVOA_W
 ClientSampleId :
 SB-07(0-2)

Quant Time: Feb 08 23:45:32 2019
 Quant Method : Z:\VOASRV\HPCHEM1\MSVOA_W\METHOD\82W012419S.M
 Quant Title : SW846 8260
 QLast Update : Fri Jan 25 11:07:41 2019
 Response via : Initial Calibration

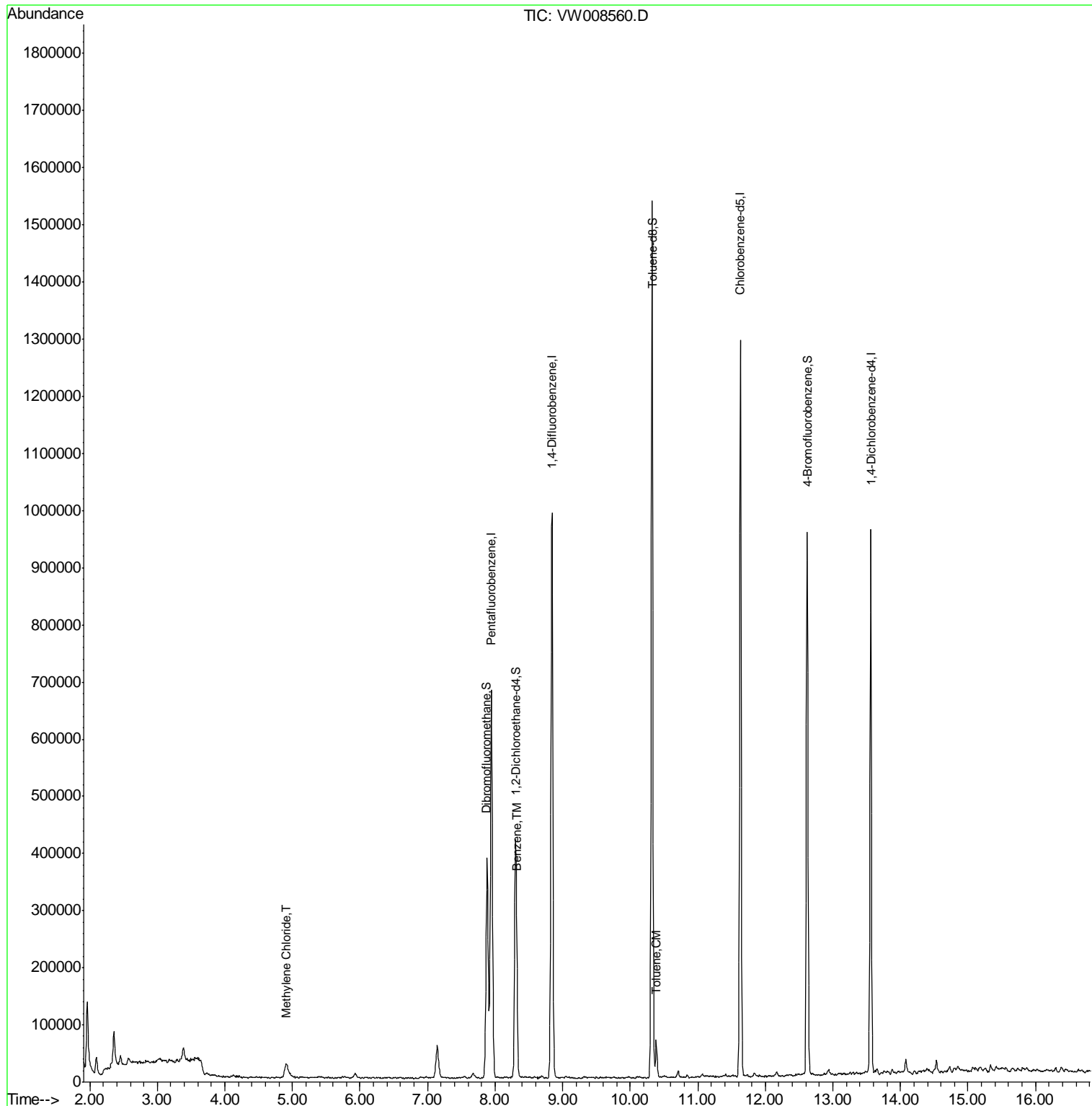
Internal Standards	R.T.	QIon	Response	Conc	Units	Dev(Min)
1) Pentafluorobenzene	7.95	168	519136	50.00	ug/l	0.00
34) 1,4-Difluorobenzene	8.84	114	836375	50.00	ug/l	0.00
63) Chlorobenzene-d5	11.63	117	693199	50.00	ug/l	0.00
72) 1,4-Dichlorobenzene-d4	13.56	152	233033	50.00	ug/l	0.00
System Monitoring Compounds						
33) 1,2-Dichloroethane-d4	8.31	65	293433	57.54	ug/l	0.00
Spiked Amount	50.000		Recovery	=	115.08%	
35) Dibromofluoromethane	7.88	113	264517	54.09	ug/l	0.00
Spiked Amount	50.000		Recovery	=	108.18%	
50) Toluene-d8	10.32	98	982496	50.10	ug/l	0.00
Spiked Amount	50.000		Recovery	=	100.20%	
62) 4-Bromofluorobenzene	12.62	95	292297	38.77	ug/l	0.00
Spiked Amount	50.000		Recovery	=	77.54%	
Target Compounds						
20) Methylene Chloride	4.90	84	21223	4.021	ug/l	92
40) Benzene	8.32	78	48978	2.234	ug/l	100
52) Toluene	10.39	92	26334	1.820	ug/l	98

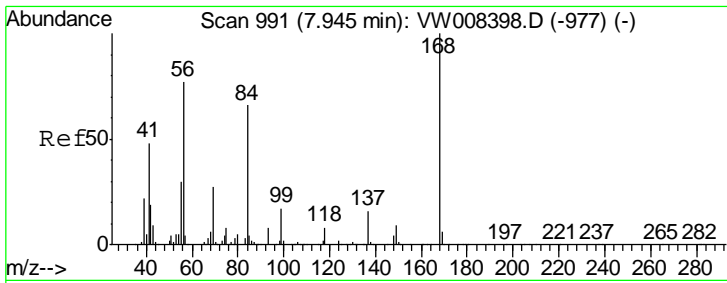
(#) = qualifier out of range (m) = manual integration (+) = signals summed

Data Path : Z:\VOASRV\HPCHEM1\MSVOA W\DATA\VW020719\
 Data File : VW008560.D
 Acq On : 07 Feb 2019 18:36
 Operator : SY/VA
 Sample : K1390-12
 Misc : 5.56G/5ML/MSVOA W/SOIL
 ALS Vial : 19 Sample Multiplier: 1

Instrument :
 MSVOA_W
 ClientSampleId :
 SB-07(0-2)

Quant Time: Feb 08 23:45:32 2019
 Quant Method : Z:\VOASRV\HPCHEM1\MSVOA_W\METHOD\82W012419S.M
 Quant Title : SW846 8260
 QLast Update : Fri Jan 25 11:07:41 2019
 Response via : Initial Calibration

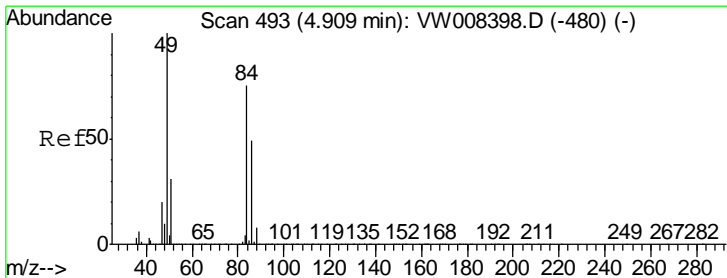
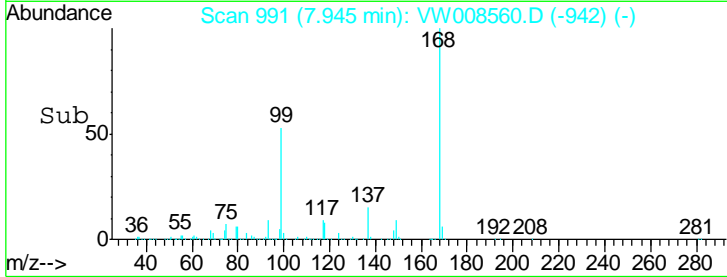
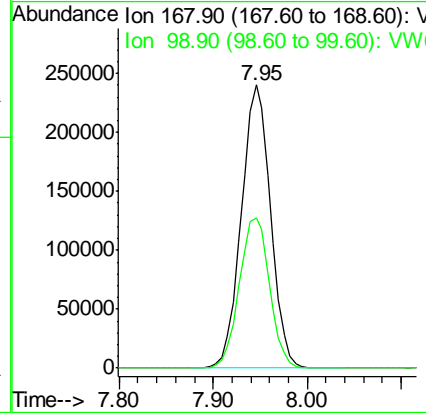
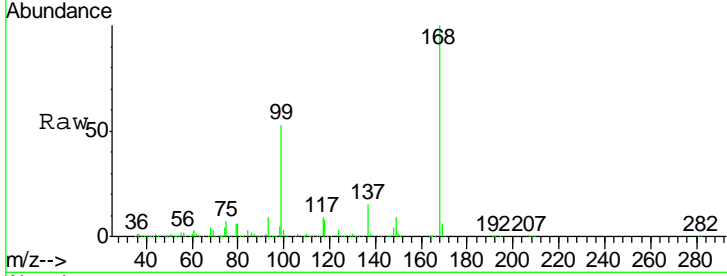




#1
 Pentafluorobenzene
 Concen: 50.000 ug/l
 RT: 7.95 min Scan# 991
 Delta R.T. 0.00 min
 Lab File: VW008560.D
 Acq: 07 Feb 2019 18:36

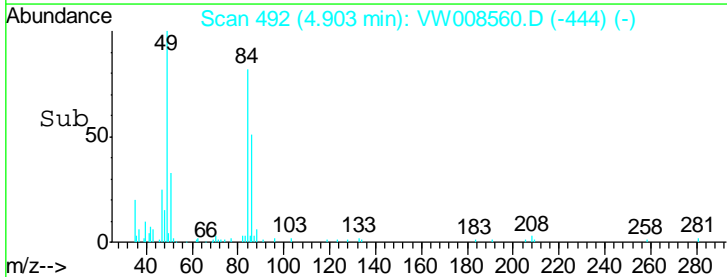
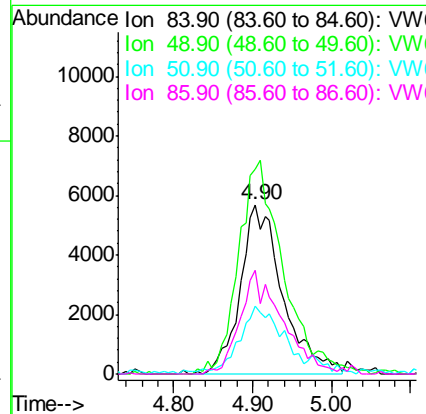
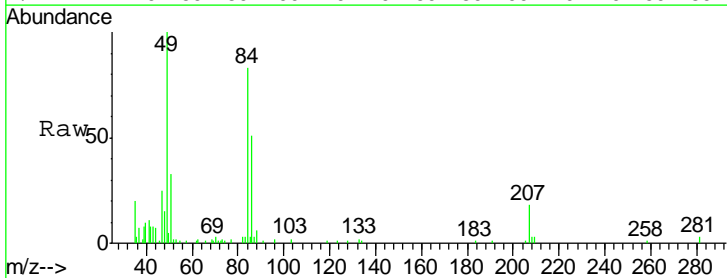
Instrument :
 MSVOA_W
 ClientSampled :
 SB-07(0-2)

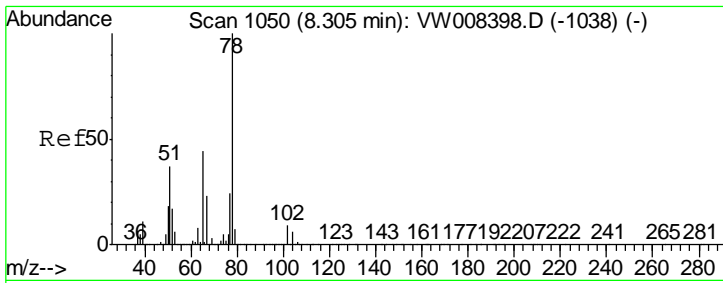
Tgt Ion: 168 Resp: 519136
 Ion Ratio Lower Upper
 168 100
 99 53.2 45.5 68.3



#20
 Methylene Chloride
 Concen: 4.021 ug/l
 RT: 4.90 min Scan# 492
 Delta R.T. -0.01 min
 Lab File: VW008560.D
 Acq: 07 Feb 2019 18:36

Tgt Ion: 84 Resp: 21223
 Ion Ratio Lower Upper
 84 100
 49 120.8 106.8 160.2
 51 38.5 32.9 49.3
 86 61.4 52.2 78.2

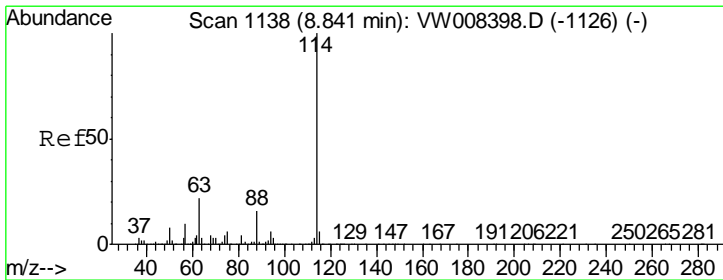
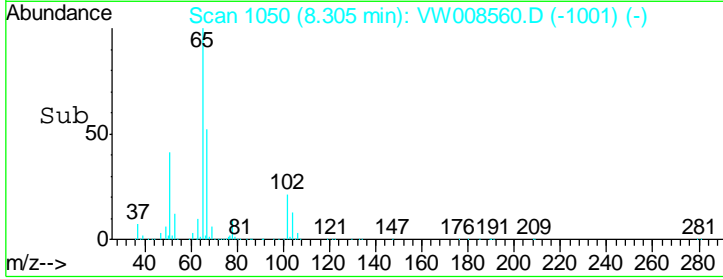
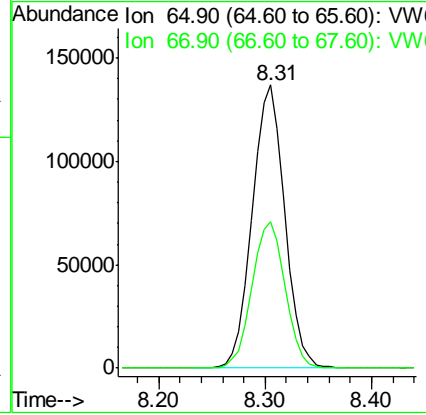
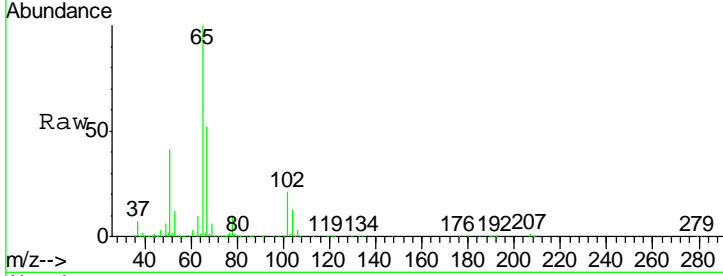




#33
 1,2-Dichloroethane-d4
 Concen: 57.536 ug/l
 RT: 8.31 min Scan# 1050
 Delta R.T. 0.00 min
 Lab File: VW008560.D
 Acq: 07 Feb 2019 18:36

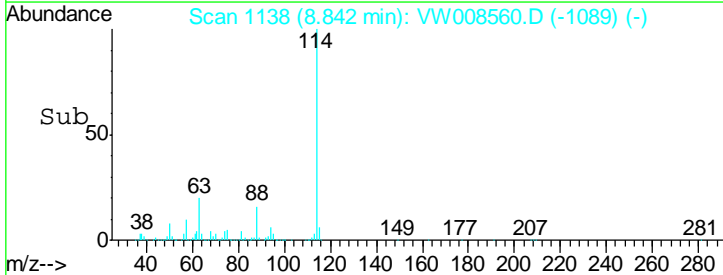
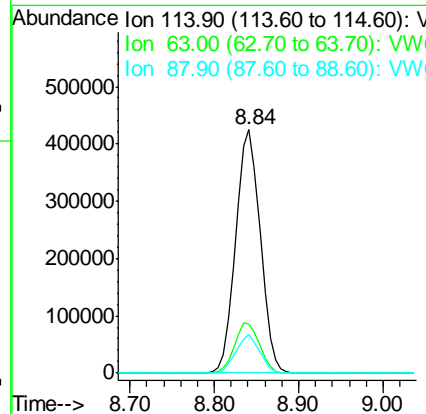
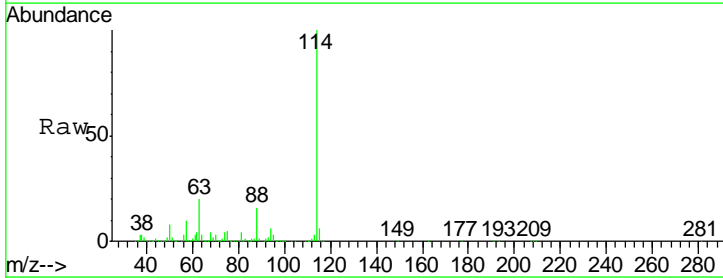
Instrument :
 MSVOA_W
 ClientSampled :
 SB-07(0-2)

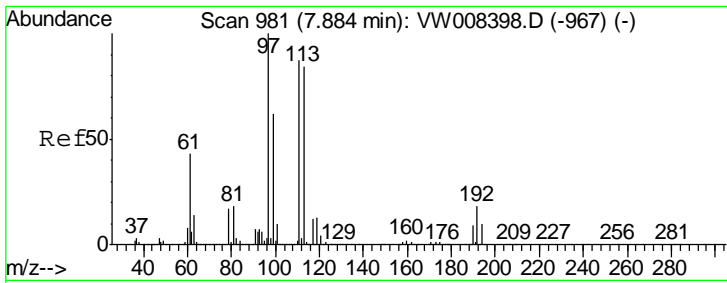
Tgt Ion	Resp	Lower	Upper
65	100		
67	53.0	0.0	104.0



#34
 1,4-Difluorobenzene
 Concen: 50.000 ug/l
 RT: 8.84 min Scan# 1138
 Delta R.T. 0.00 min
 Lab File: VW008560.D
 Acq: 07 Feb 2019 18:36

Tgt Ion	Resp	Lower	Upper
114	100		
63	20.1	0.0	43.6
88	16.0	0.0	31.8

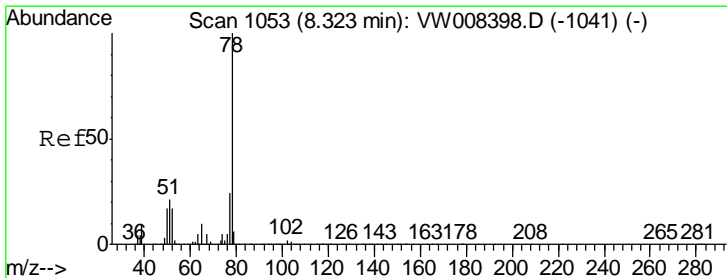
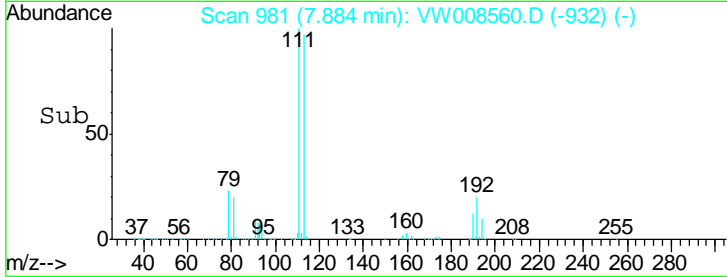
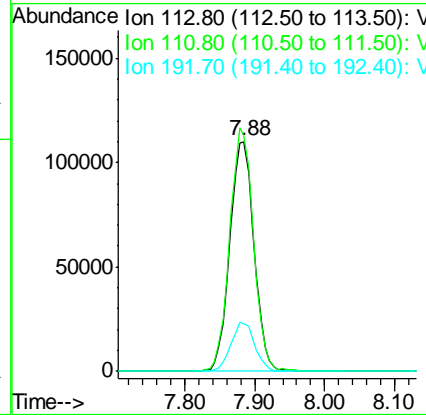
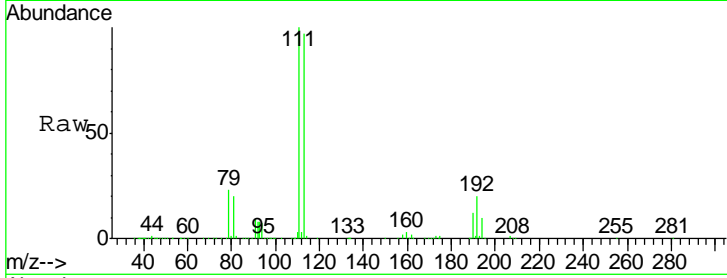




#35
 Dibromofluoromethane
 Concen: 54.087 ug/l
 RT: 7.88 min Scan# 981
 Delta R.T. 0.00 min
 Lab File: VW008560.D
 Acq: 07 Feb 2019 18:36

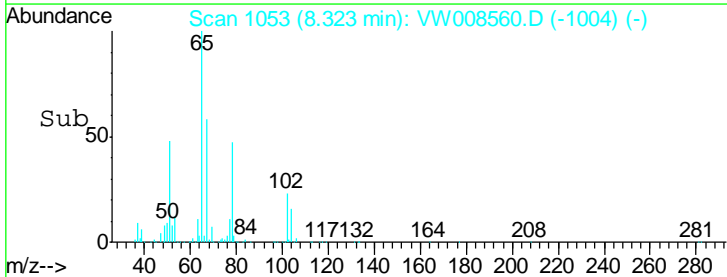
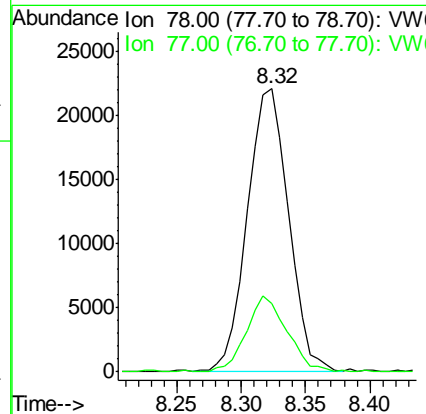
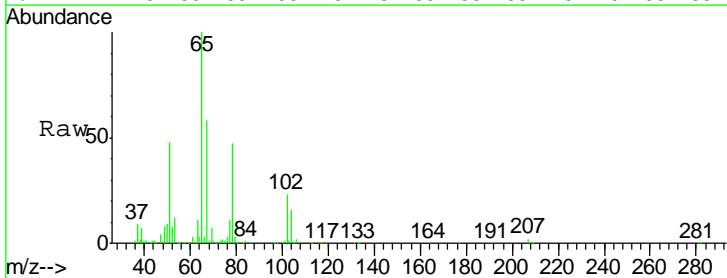
Instrument :
 MSVOA_W
 ClientSampled :
 SB-07(0-2)

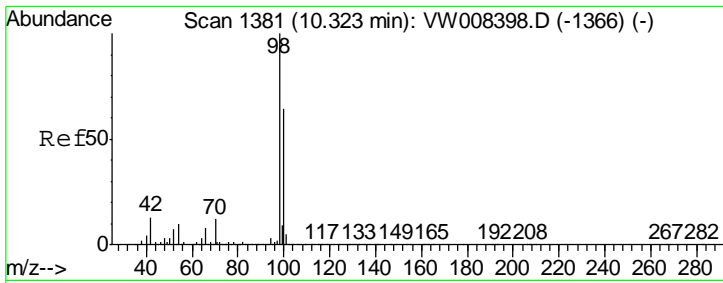
Tgt Ion	Resp	Lower	Upper
113	100		
111	104.0	81.0	121.4
192	20.9	16.8	25.2



#40
 Benzene
 Concen: 2.234 ug/l
 RT: 8.32 min Scan# 1053
 Delta R.T. 0.00 min
 Lab File: VW008560.D
 Acq: 07 Feb 2019 18:36

Tgt Ion	Resp	Lower	Upper
78	100		
77	23.7	19.0	28.6

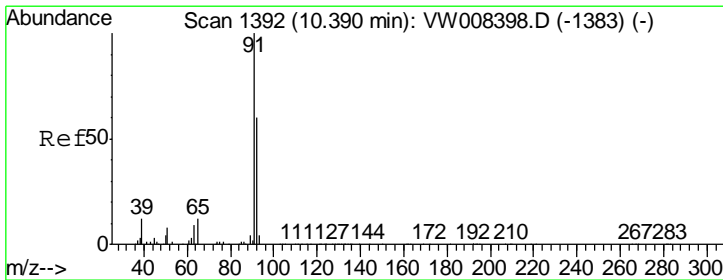
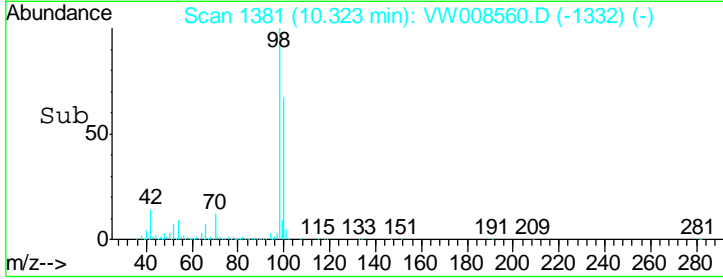
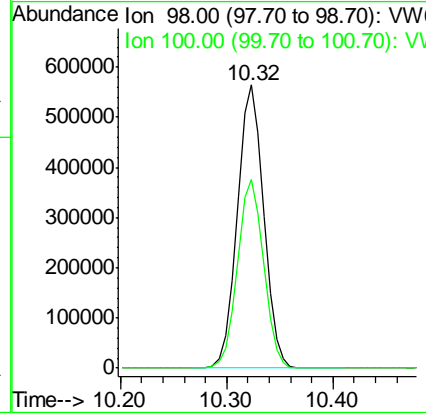
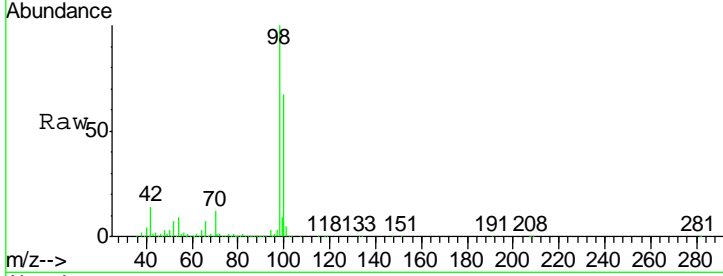




#50
 Toluene-d8
 Concen: 50.098 ug/l
 RT: 10.32 min Scan# 1381
 Delta R.T. 0.00 min
 Lab File: VW008560.D
 Acq: 07 Feb 2019 18:36

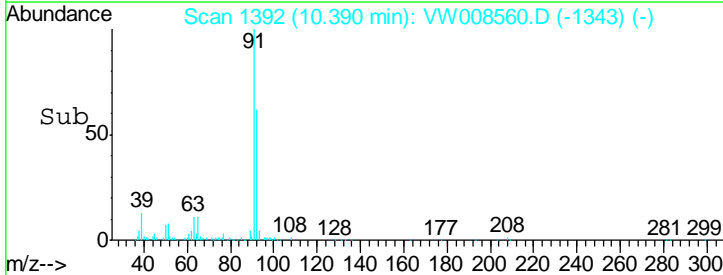
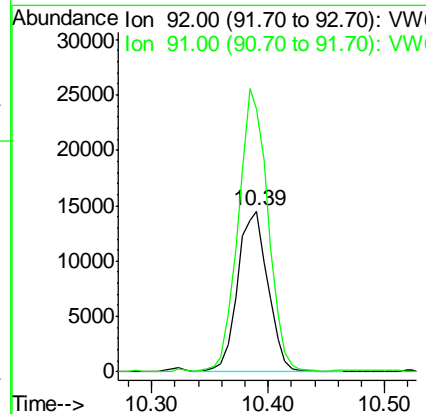
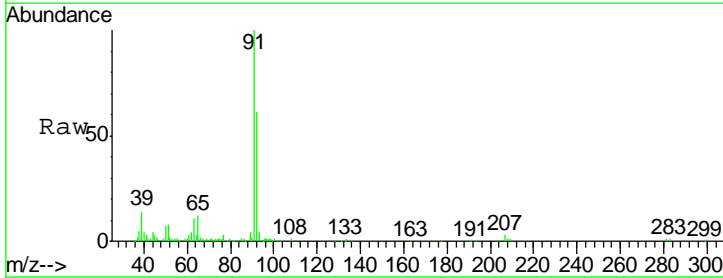
Instrument :
 MSVOA_W
 ClientSampled :
 SB-07(0-2)

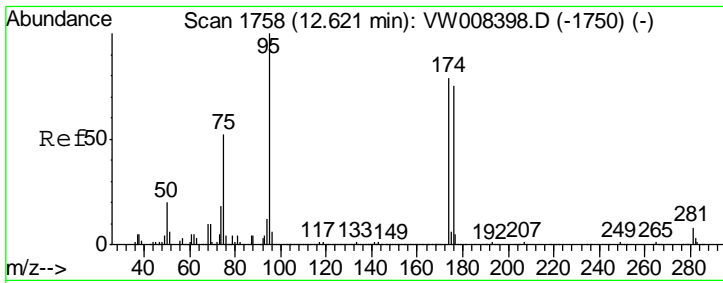
Tgt Ion	Resp	Lower	Upper
98	982496		
100	66.0	52.6	78.8



#52
 Toluene
 Concen: 1.820 ug/l
 RT: 10.39 min Scan# 1392
 Delta R.T. 0.00 min
 Lab File: VW008560.D
 Acq: 07 Feb 2019 18:36

Tgt Ion	Resp	Lower	Upper
92	26334		
91	172.6	135.5	203.3

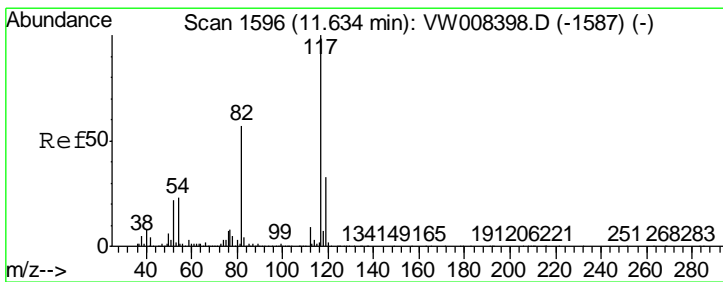
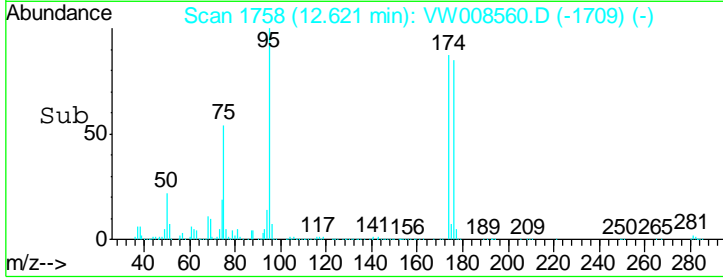
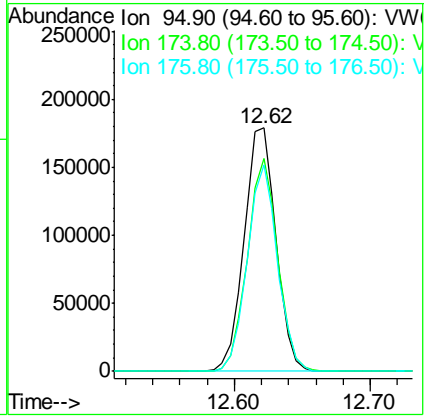
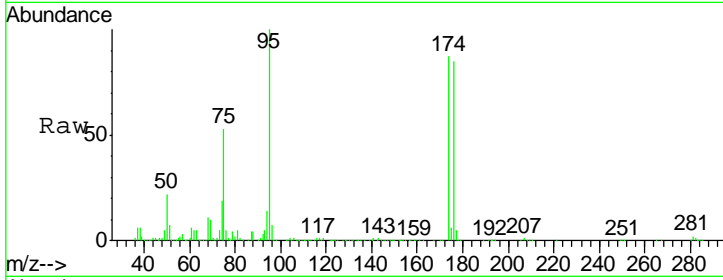




#62
 4-Bromofluorobenzene
 Concen: 38.775 ug/l
 RT: 12.62 min Scan# 1758
 Delta R.T. 0.00 min
 Lab File: VW008560.D
 Acq: 07 Feb 2019 18:36

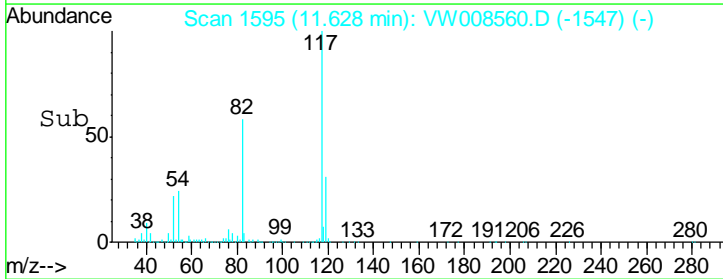
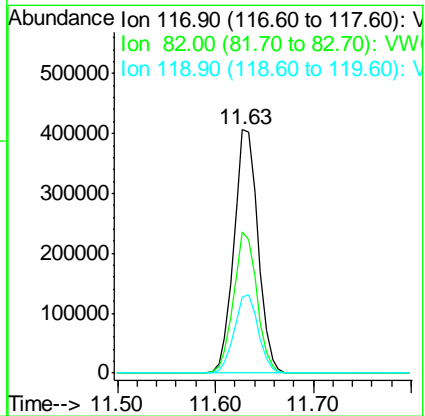
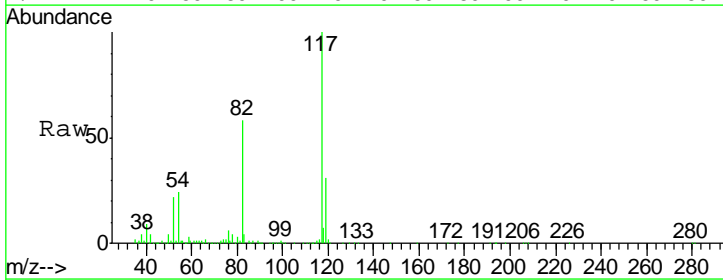
Instrument :
 MSVOA_W
 Client Sampled :
 SB-07(0-2)

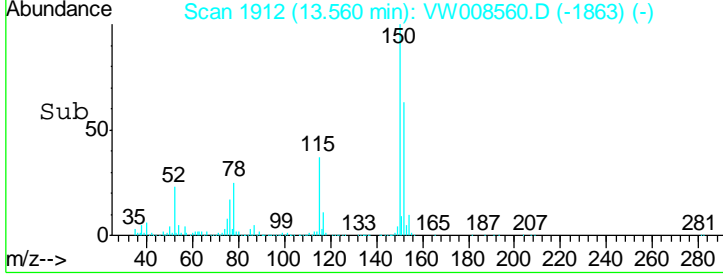
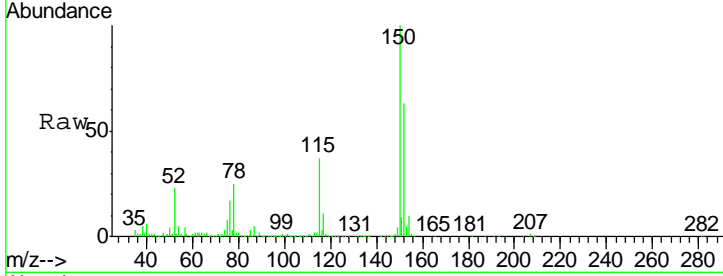
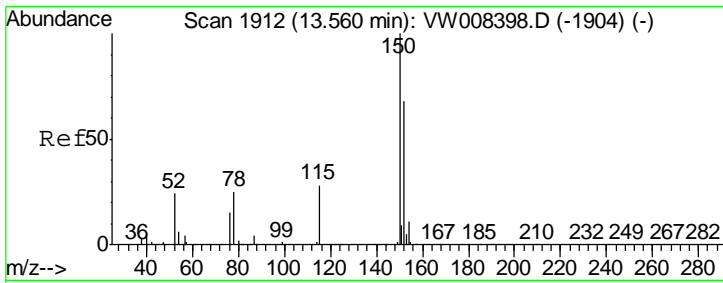
Tgt Ion	Resp	Lower	Upper
95	100		
174	84.3	0.0	157.6
176	80.8	0.0	151.8



#63
 Chlorobenzene-d5
 Concen: 50.000 ug/l
 RT: 11.63 min Scan# 1595
 Delta R.T. -0.01 min
 Lab File: VW008560.D
 Acq: 07 Feb 2019 18:36

Tgt Ion	Resp	Lower	Upper
117	100		
82	58.0	45.4	68.0
119	31.1	26.2	39.4





#72
 1,4-Dichlorobenzene-d4
 Concen: 50.000 ug/l
 RT: 13.56 min Scan# 1912
 Delta R.T. 0.00 min
 Lab File: VW008560.D
 Acq: 07 Feb 2019 18:36

Instrument : MSVOA_W
 ClientSampleId : SB-07(0-2)

Tot Ion:152 Resp: 233033

Ion	Ratio	Lower	Upper
152	100		
115	58.4	29.9	89.7
150	160.2	0.0	351.4

