

Data Path : Z:\VOASRV\HPCHEM1\MSVOA W\DATA\VW020819\
 Data File : VW008573.D
 Acq On : 08 Feb 2019 14:48
 Operator : SY/VA
 Sample : K1401-01RE
 Misc : 6.30G/5ML/MSVOA W/SOIL
 ALS Vial : 6 Sample Multiplier: 1

Instrument :
 MSVOA_W
 ClientSampled :
 RBR-200050

Quant Time: Feb 09 00:25:59 2019
 Quant Method : Z:\VOASRV\HPCHEM1\MSVOA_W\METHOD\82W012419S.M
 Quant Title : SW846 8260
 QLast Update : Fri Jan 25 11:07:41 2019
 Response via : Initial Calibration

Internal Standards	R.T.	QIon	Response	Conc	Units	Dev(Min)
1) Pentafluorobenzene	7.95	168	502691	50.00	ug/l	0.00
34) 1,4-Difluorobenzene	8.84	114	817475	50.00	ug/l	0.00
63) Chlorobenzene-d5	11.63	117	781695	50.00	ug/l	0.00
72) 1,4-Dichlorobenzene-d4	13.56	152	388247	50.00	ug/l	0.00

System Monitoring Compounds

33) 1,2-Dichloroethane-d4	8.31	65	321676	65.14	ug/l	0.00
Spiked Amount	50.000		Recovery	=	130.28%	
35) Dibromofluoromethane	7.88	113	264457	55.33	ug/l	0.00
Spiked Amount	50.000		Recovery	=	110.66%	
50) Toluene-d8	10.32	98	1043984	54.46	ug/l	0.00
Spiked Amount	50.000		Recovery	=	108.92%	
62) 4-Bromofluorobenzene	12.62	95	393161	53.36	ug/l	0.00
Spiked Amount	50.000		Recovery	=	106.72%	

Target Compounds

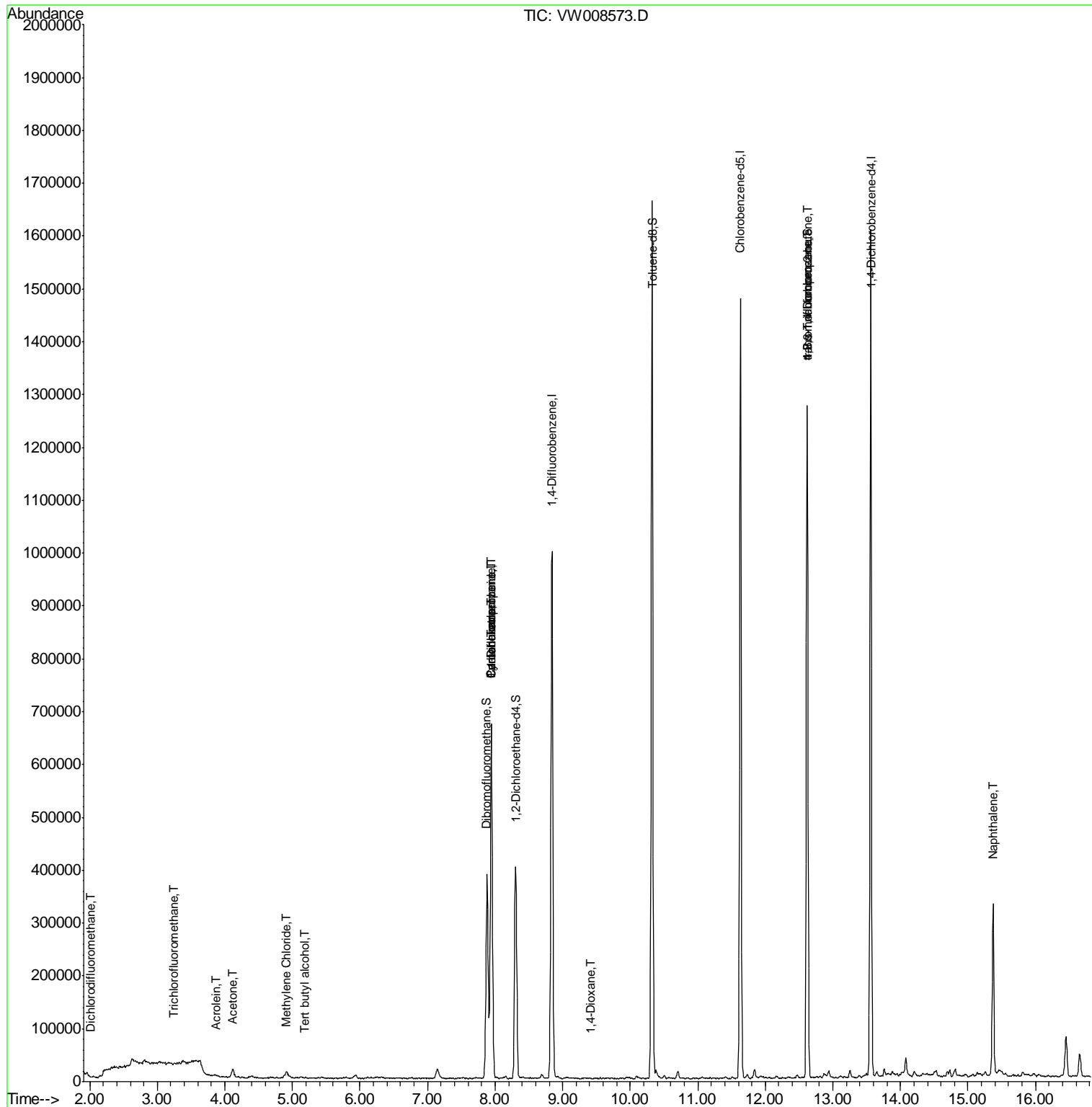
						Qvalue
2) Dichlorodifluoromethane	2.01	85	68	3.274	ug/l #	41
7) Trichlorofluoromethane	3.25	101	111	4.747	ug/l #	17
11) Tert butyl alcohol	5.18	59	668	1.680	ug/l #	63
13) Acrolein	3.87	56	196	4.735	ug/l #	14
16) Acetone	4.12	43	27388	24.696	ug/l	95
20) Methylene Chloride	4.91	84	8253	1.615	ug/l #	79
31) Cyclohexane	7.94	56	12690	1.309	ug/l #	28
36) 1,1-Dichloropropene	7.95	75	39012	5.052	ug/l #	50
38) Carbon Tetrachloride	7.95	117	48260	6.211	ug/l #	16
49) 1,4-Dioxane	9.43	88	105	2.261	ug/l #	47
76) 1,2,3-Trichloropropane	12.62	75	215378	63.806	ug/l #	1
81) trans-1,4-Dichloro-2-buten	12.62	75	215378	126.021	ug/l #	12
95) Naphthalene	15.37	128	265774	18.778	ug/l	99

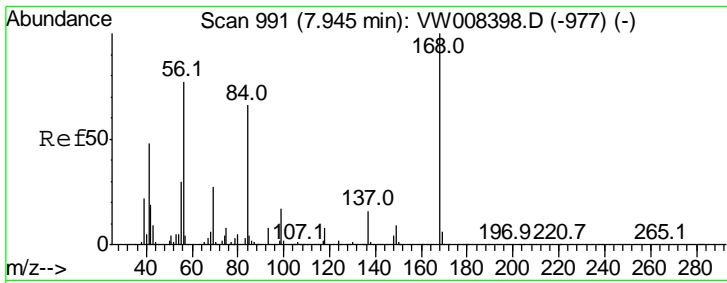
(#) = qualifier out of range (m) = manual integration (+) = signals summed

Data Path : Z:\VOASRV\HPCHEM1\MSVOA W\DATA\VW020819\
 Data File : VW008573.D
 Acq On : 08 Feb 2019 14:48
 Operator : SY/VA
 Sample : K1401-01RE
 Misc : 6.30G/5ML/MSVOA W/SOIL
 ALS Vial : 6 Sample Multiplier: 1

Instrument :
 MSVOA_W
 Client Sampled :
 RBR-200050

Quant Time: Feb 09 00:25:59 2019
 Quant Method : Z:\VOASRV\HPCHEM1\MSVOA_W\METHOD\82W012419S.M
 Quant Title : SW846 8260
 QLast Update : Fri Jan 25 11:07:41 2019
 Response via : Initial Calibration

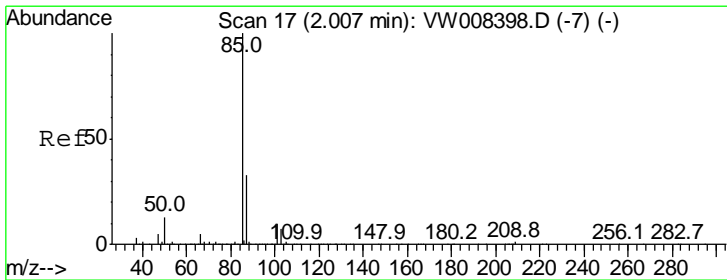
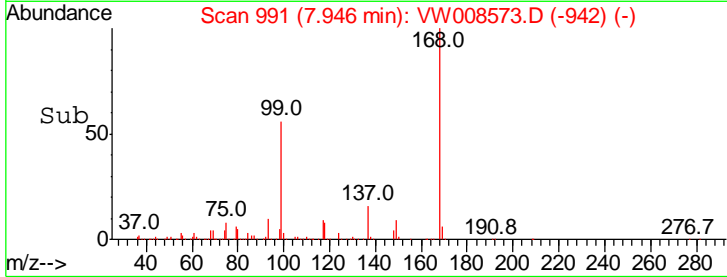
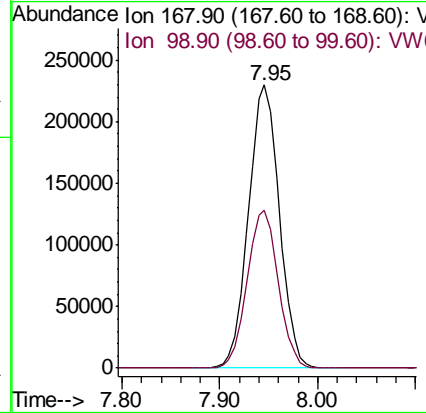
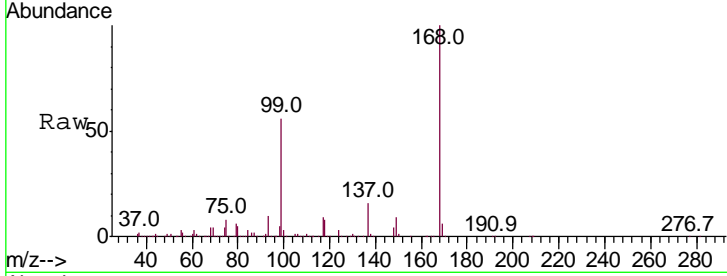




#1
 Pentafluorobenzene
 Concen: 50.000 ug/l
 RT: 7.95 min Scan# 991
 Delta R.T. 0.00 min
 Lab File: VW008573.D
 Acq: 08 Feb 2019 14:48

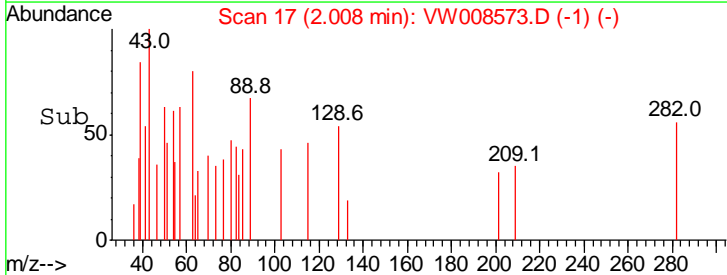
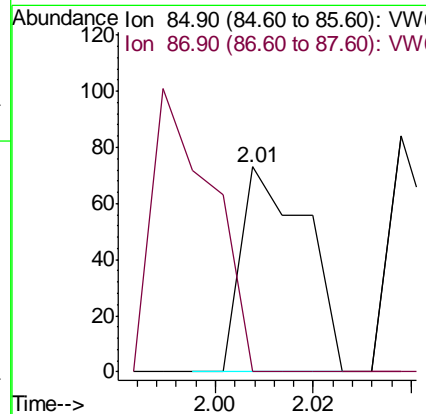
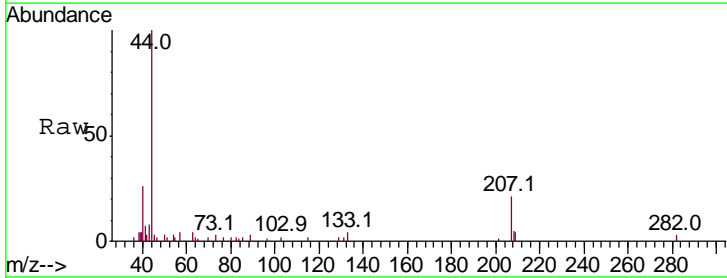
Instrument :
 MSVOA_W
 ClientSampled :
 RBR-200050

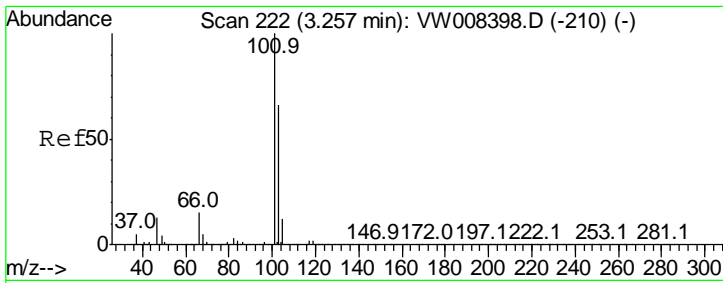
Tgt Ion	Resp	Lower	Upper
168	100		
99	56.0	45.5	68.3



#2
 Dichlorodifluoromethane
 Concen: 3.274 ug/l
 RT: 2.01 min Scan# 17
 Delta R.T. 0.00 min
 Lab File: VW008573.D
 Acq: 08 Feb 2019 14:48

Tgt Ion	Resp	Lower	Upper
85	100		
87	0.0	16.7	50.1#

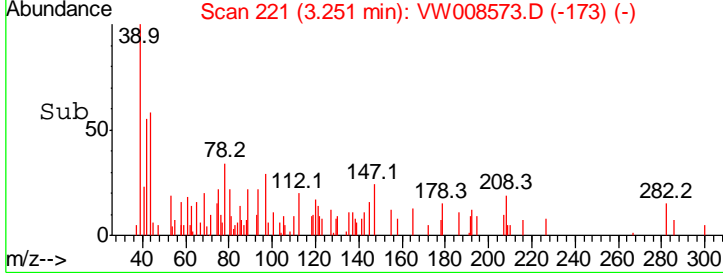
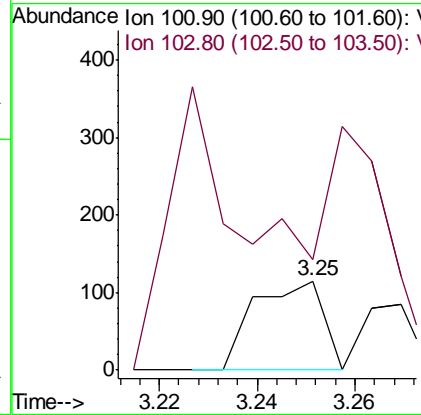
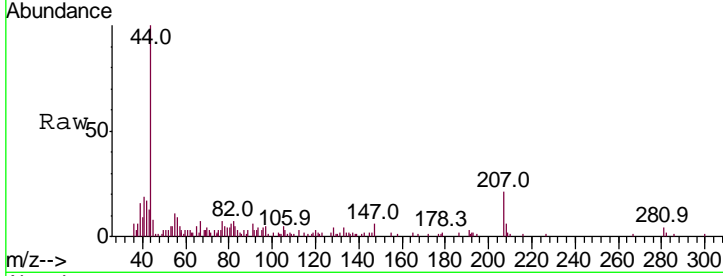




#7
 Trichlorofluoromethane
 Concen: 4.747 ug/l
 RT: 3.25 min Scan# 221
 Delta R.T. -0.01 min
 Lab File: VW008573.D
 Acq: 08 Feb 2019 14:48

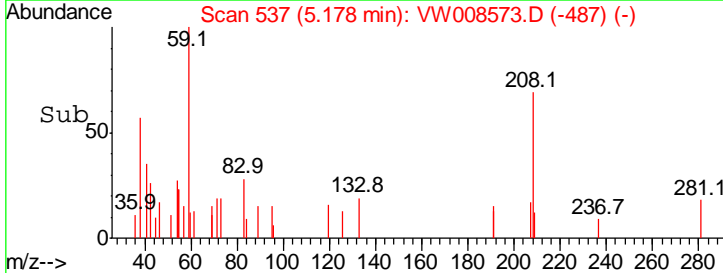
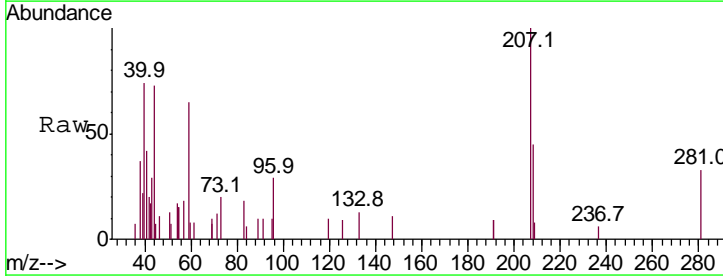
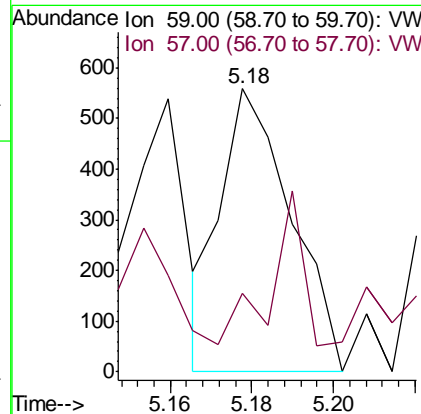
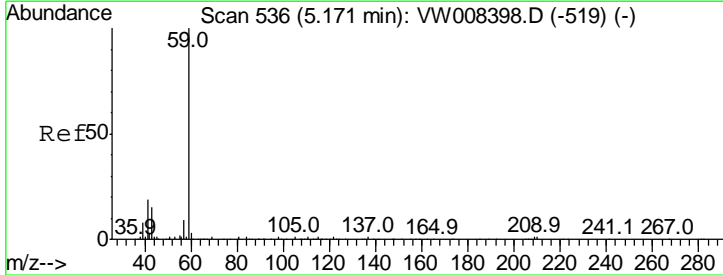
Instrument :
 MSVOA_W
 ClientSampled :
 RBR-200050

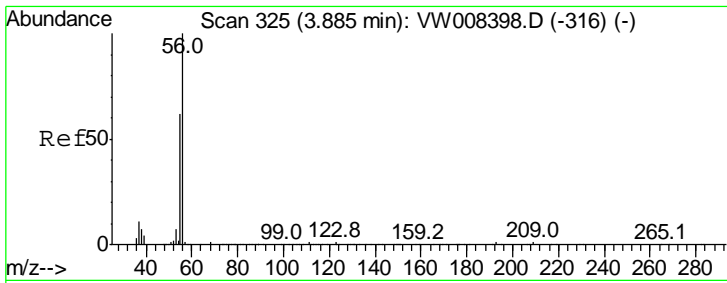
Tgt Ion: 101 Resp: 111
 Ion Ratio Lower Upper
 101 100
 103 0.0 52.5 78.7#



#11
 Tert butyl alcohol
 Concen: 1.680 ug/l
 RT: 5.18 min Scan# 537
 Delta R.T. 0.01 min
 Lab File: VW008573.D
 Acq: 08 Feb 2019 14:48

Tgt Ion: 59 Resp: 668
 Ion Ratio Lower Upper
 59 100
 57 25.9 9.3 13.9#

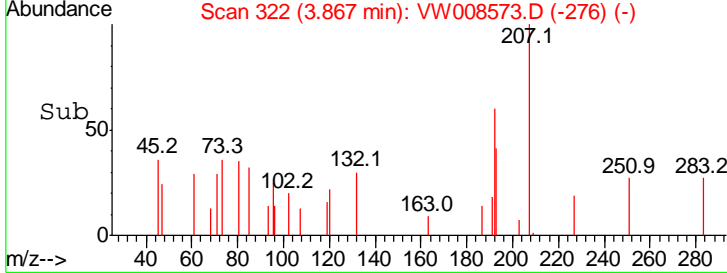
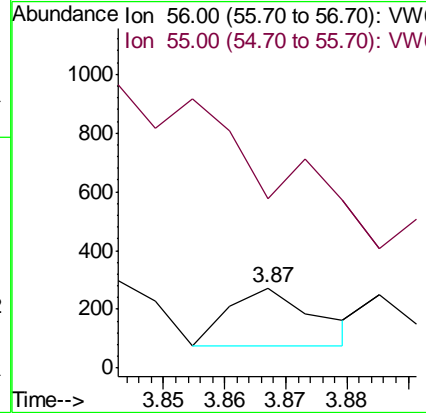
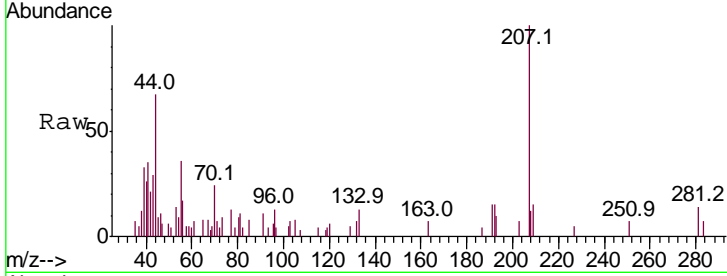




#13
 Acrolein
 Concen: 4.735 ug/l
 RT: 3.87 min Scan# 322
 Delta R.T. -0.02 min
 Lab File: VW008573.D
 Acq: 08 Feb 2019 14:48

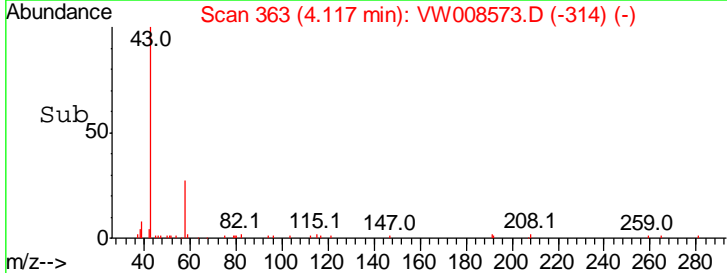
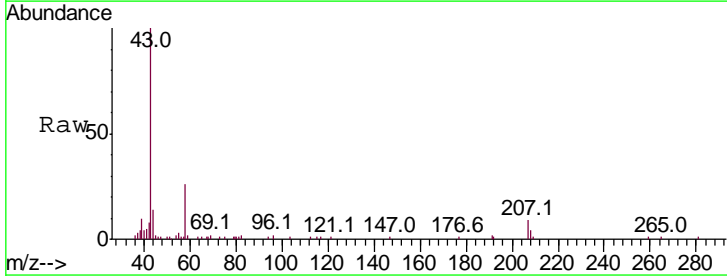
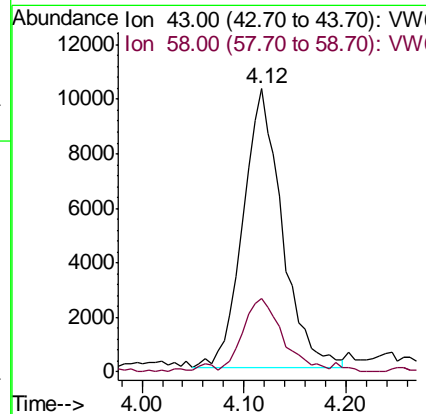
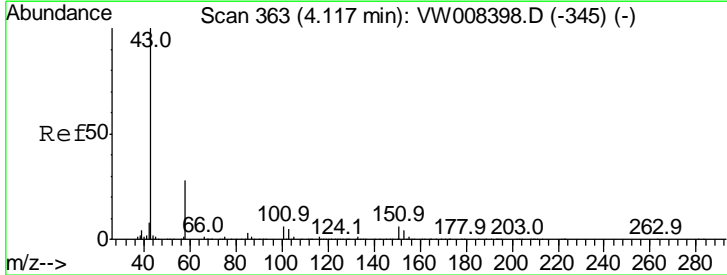
Instrument :
 MSVOA_W
 ClientSampled :
 RBR-200050

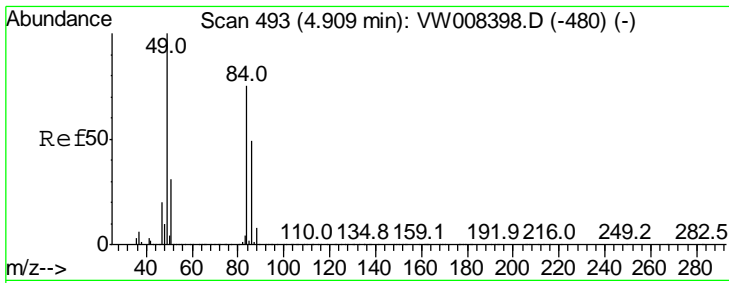
Tgt Ion	Resp	Lower	Upper
56	100		
55	0.0	56.7	85.1#



#16
 Acetone
 Concen: 24.696 ug/l
 RT: 4.12 min Scan# 363
 Delta R.T. 0.00 min
 Lab File: VW008573.D
 Acq: 08 Feb 2019 14:48

Tgt Ion	Resp	Lower	Upper
43	100		
58	25.6	22.6	34.0

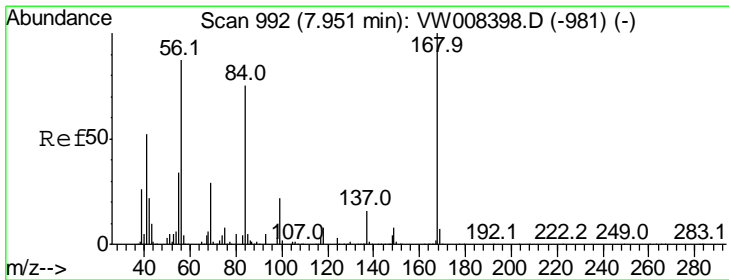
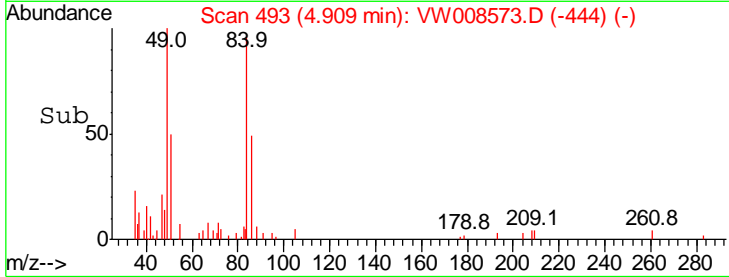
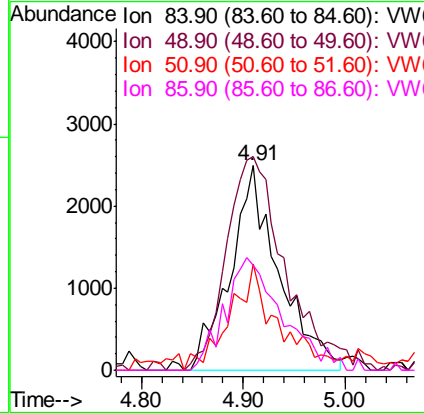
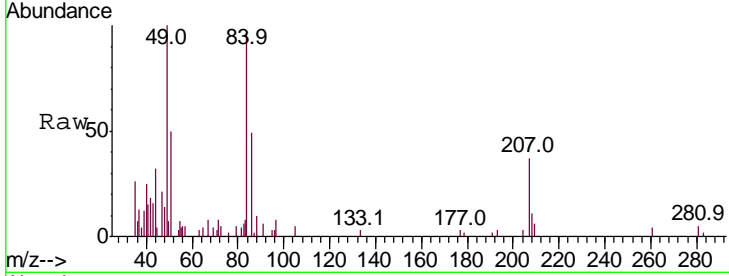




#20
Methylene Chloride
Concen: 1.615 ug/l
RT: 4.91 min Scan# 493
Delta R.T. 0.00 min
Lab File: VW008573.D
Acq: 08 Feb 2019 14:48

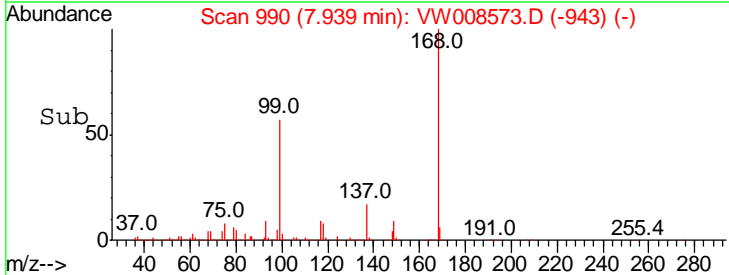
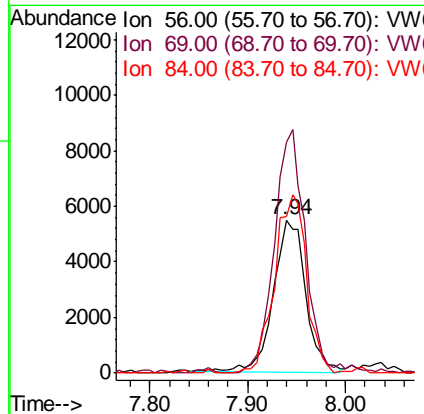
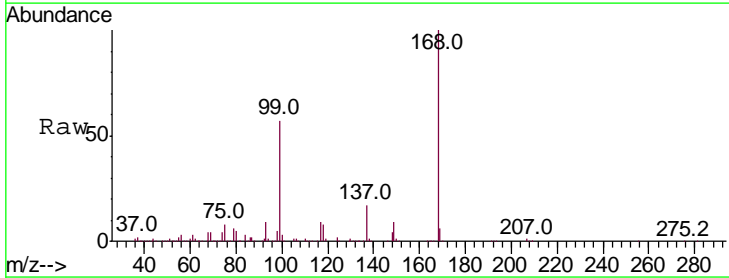
Instrument :
MSVOA_W
ClientSampled :
RBR-200050

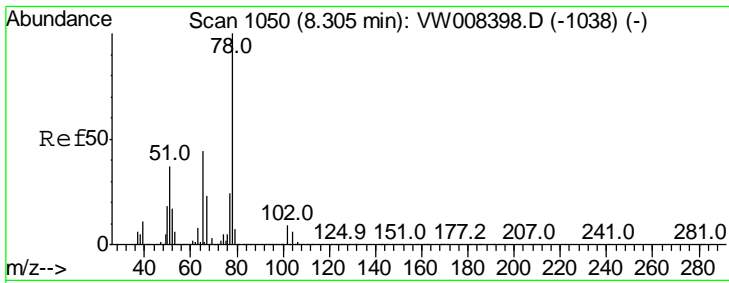
Tgt Ion	Resp	Lower	Upper
84	100		
49	101.6	106.8	160.2#
51	46.9	32.9	49.3
86	51.2	52.2	78.2#



#31
Cyclohexane
Concen: 1.309 ug/l
RT: 7.94 min Scan# 990
Delta R.T. -0.01 min
Lab File: VW008573.D
Acq: 08 Feb 2019 14:48

Tgt Ion	Resp	Lower	Upper
56	100		
69	152.9	26.4	39.6#
84	103.5	69.1	103.7

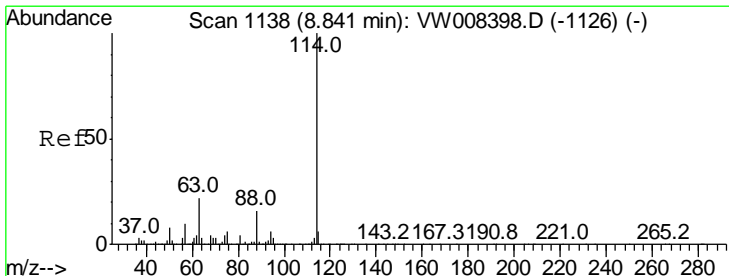
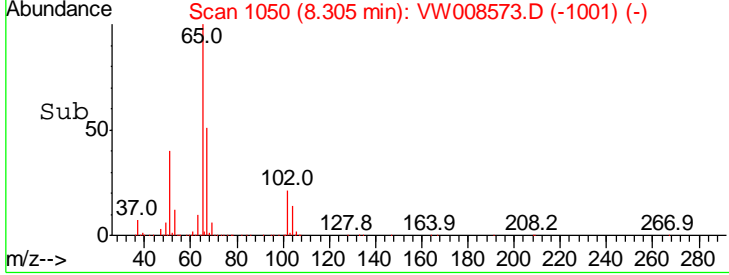
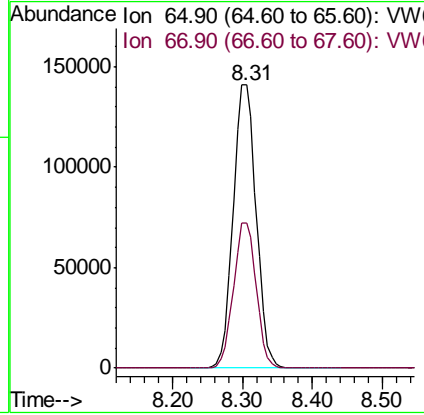
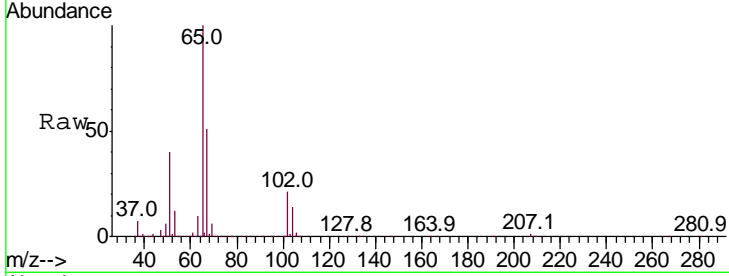




#33
 1,2-Dichloroethane-d4
 Concen: 65.137 ug/l
 RT: 8.31 min Scan# 1050
 Delta R.T. 0.00 min
 Lab File: VW008573.D
 Acq: 08 Feb 2019 14:48

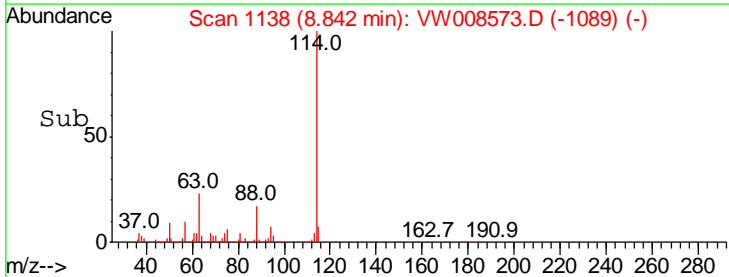
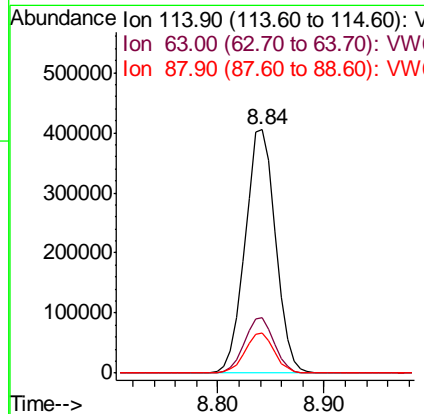
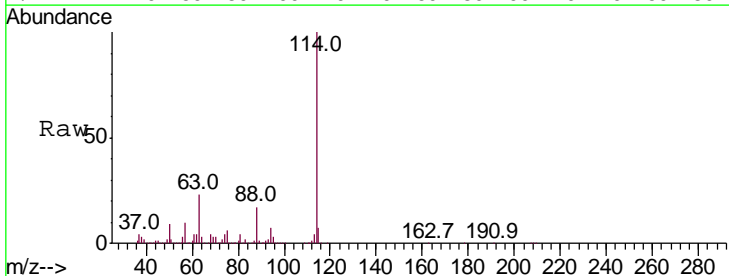
Instrument :
 MSVOA_W
 ClientSampled :
 RBR-200050

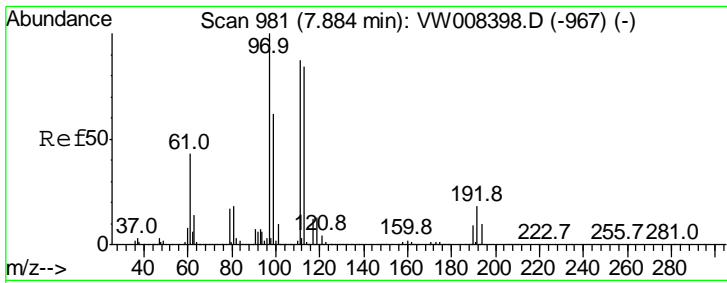
Tgt Ion: 65 Resp: 321676
 Ion Ratio Lower Upper
 65 100
 67 50.9 0.0 104.0



#34
 1,4-Difluorobenzene
 Concen: 50.000 ug/l
 RT: 8.84 min Scan# 1138
 Delta R.T. 0.00 min
 Lab File: VW008573.D
 Acq: 08 Feb 2019 14:48

Tgt Ion: 114 Resp: 817475
 Ion Ratio Lower Upper
 114 100
 63 22.8 0.0 43.6
 88 16.5 0.0 31.8

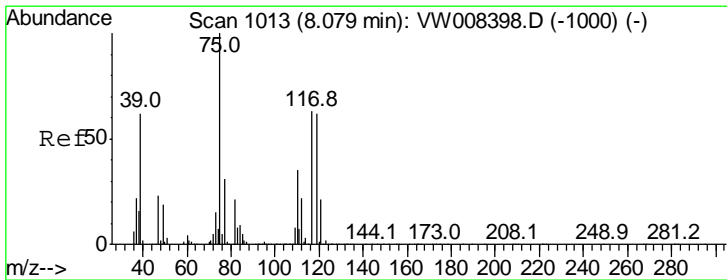
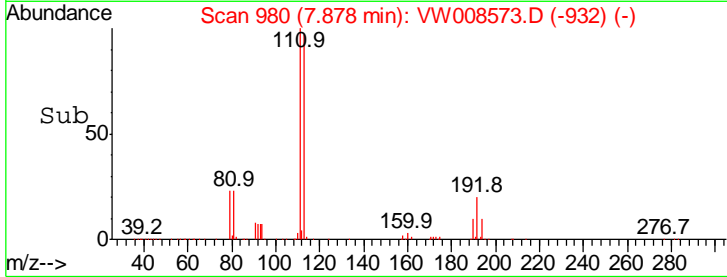
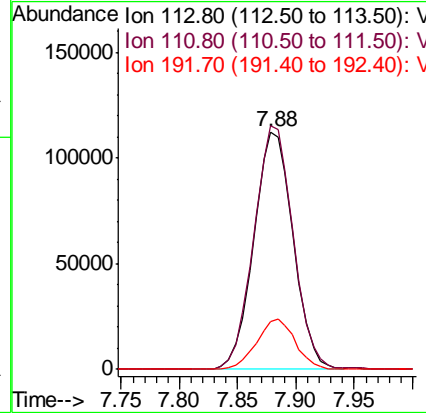
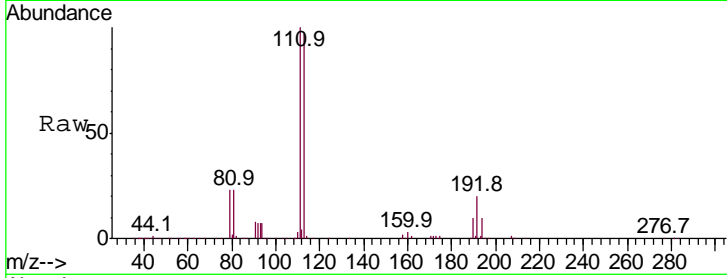




#35
 Dibromofluoromethane
 Concen: 55.325 ug/l
 RT: 7.88 min Scan# 980
 Delta R.T. -0.01 min
 Lab File: VW008573.D
 Acq: 08 Feb 2019 14:48

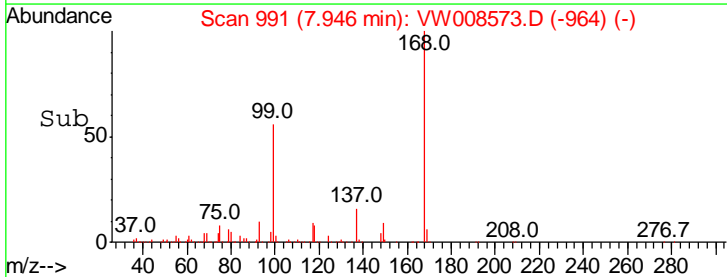
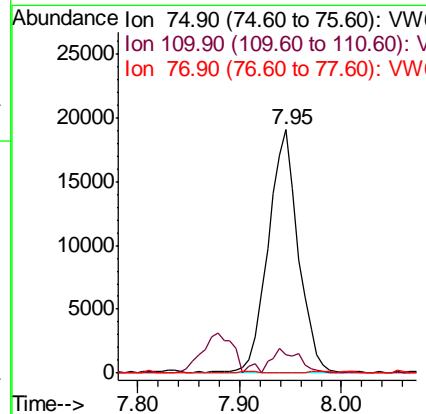
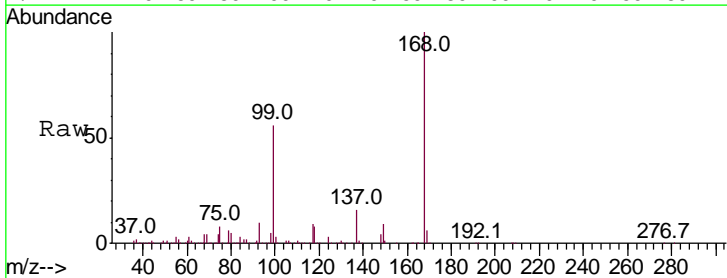
Instrument :
 MSVOA_W
 ClientSampleId :
 RBR-200050

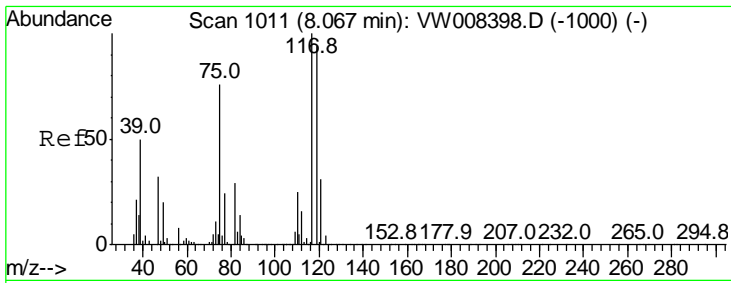
Tgt Ion	Resp	Lower	Upper
113	100		
111	102.9	81.0	121.4
192	20.9	16.8	25.2



#36
 1,1-Dichloropropene
 Concen: 5.052 ug/l
 RT: 7.95 min Scan# 991
 Delta R.T. -0.13 min
 Lab File: VW008573.D
 Acq: 08 Feb 2019 14:48

Tgt Ion	Resp	Lower	Upper
75	100		
110	8.9	17.3	52.0#
77	0.0	24.7	37.1#

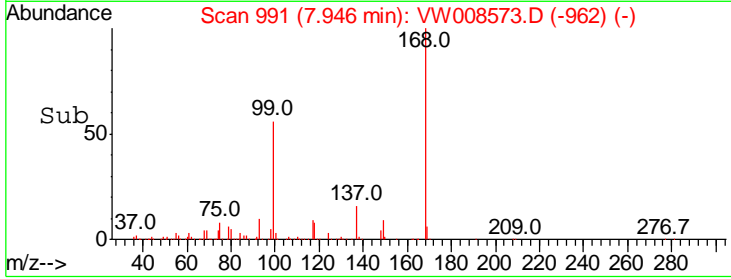
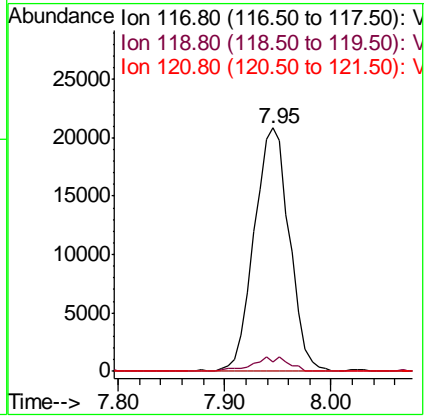
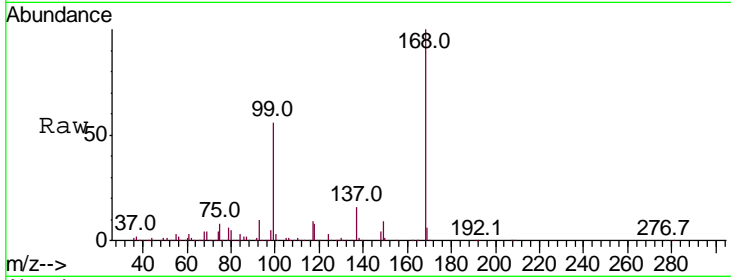




#38
 Carbon Tetrachloride
 Concen: 6.211 ug/l
 RT: 7.95 min Scan# 991
 Delta R.T. -0.12 min
 Lab File: VW008573.D
 Acq: 08 Feb 2019 14:48

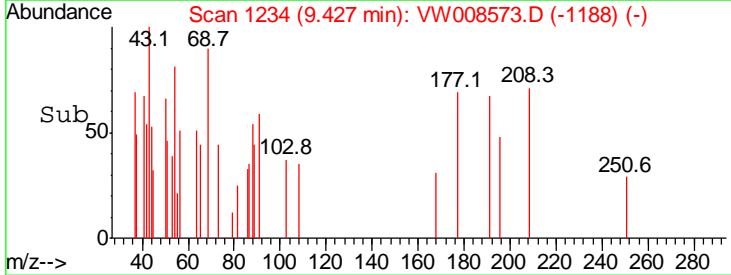
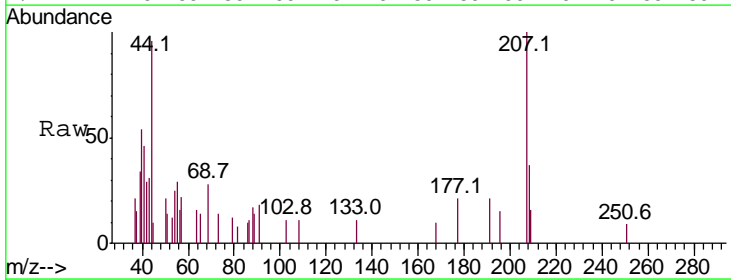
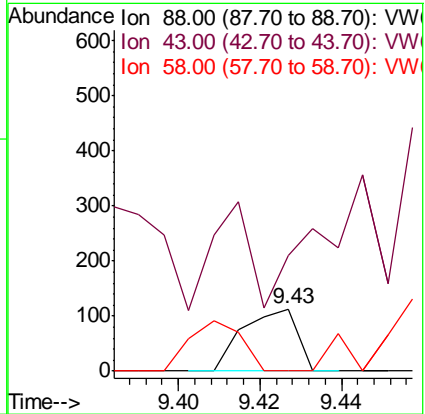
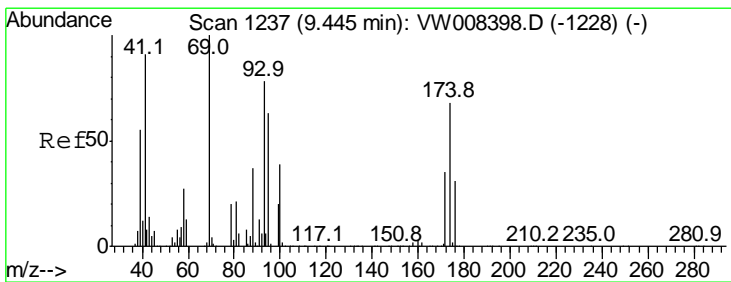
Instrument :
 MSVOA_W
ClientSampled :
 RBR-200050

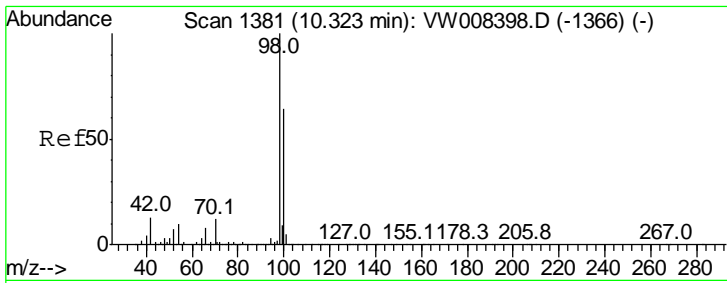
Tgt Ion	Ratio	Lower	Upper
117	100		
119	3.8	75.0	112.4#
121	0.0	24.9	37.3#



#49
 1,4-Dioxane
 Concen: 2.261 ug/l
 RT: 9.43 min Scan# 1234
 Delta R.T. -0.02 min
 Lab File: VW008573.D
 Acq: 08 Feb 2019 14:48

Tgt Ion	Ratio	Lower	Upper
88	100		
43	119.0	29.0	43.4#
58	77.1	56.4	84.6



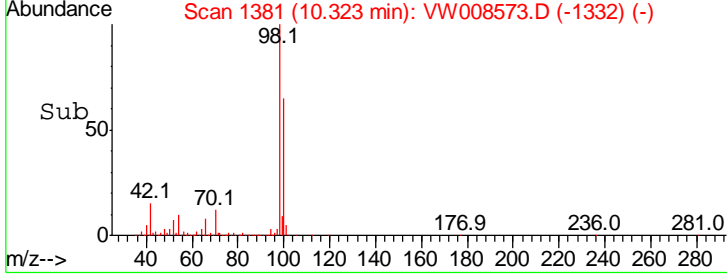
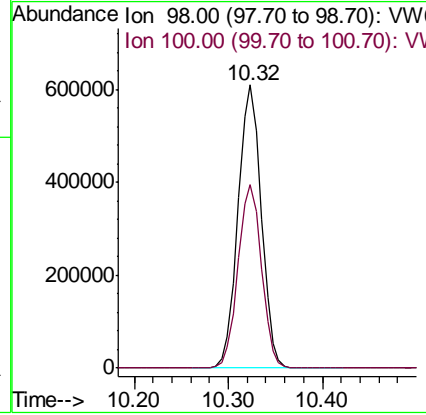
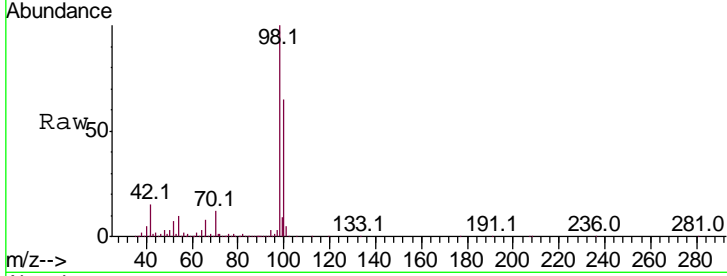


#50
 Toluene-d8
 Concen: 54.464 ug/l
 RT: 10.32 min Scan# 1381
 Delta R.T. 0.00 min
 Lab File: VW008573.D
 Acq: 08 Feb 2019 14:48

Instrument : MSVOA_W
 ClientSampled : RBR-200050

Tgt Ion: 98 Resp: 1043984

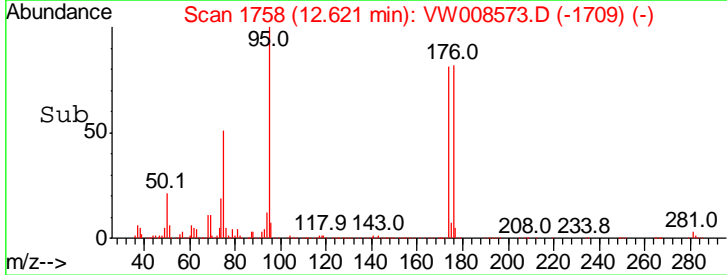
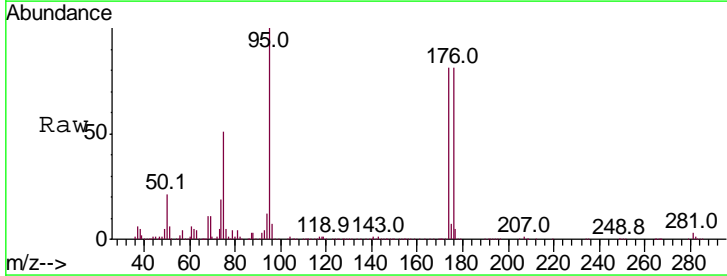
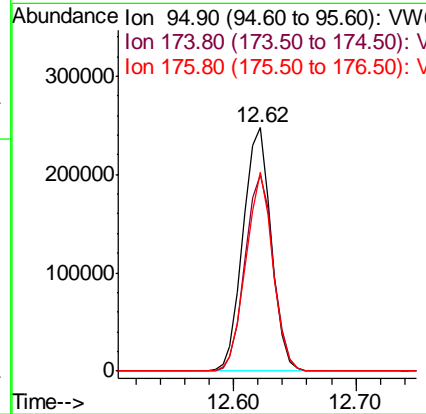
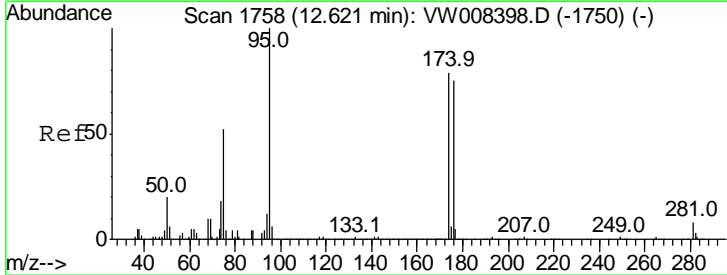
Ion	Ratio	Lower	Upper
98	100		
100	65.6	52.6	78.8

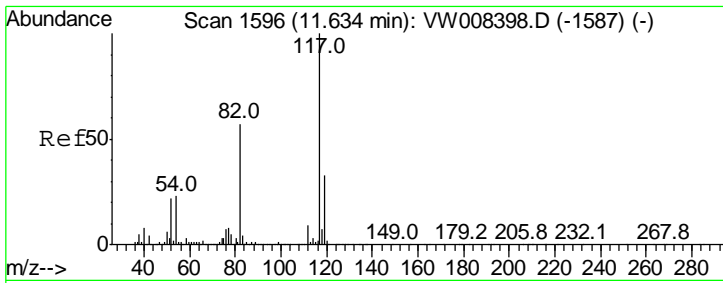


#62
 4-Bromofluorobenzene
 Concen: 53.361 ug/l
 RT: 12.62 min Scan# 1758
 Delta R.T. 0.00 min
 Lab File: VW008573.D
 Acq: 08 Feb 2019 14:48

Tgt Ion: 95 Resp: 393161

Ion	Ratio	Lower	Upper
95	100		
174	81.5	0.0	157.6
176	78.7	0.0	151.8

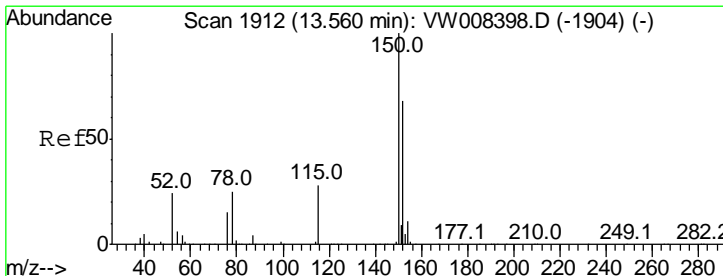
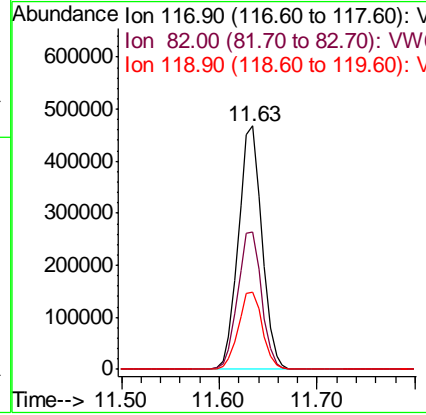
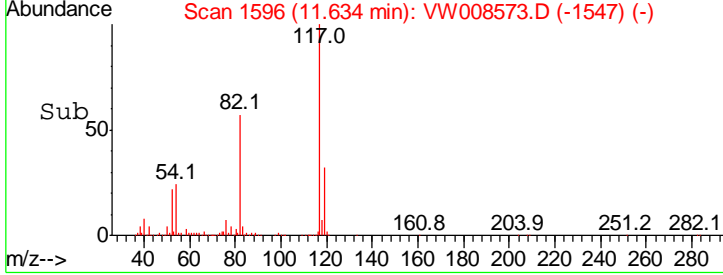
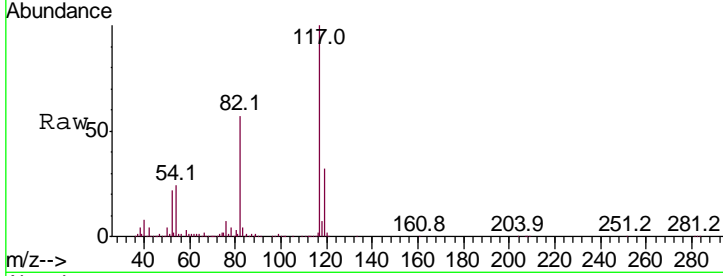




#63
 Chlorobenzene-d5
 Concen: 50.000 ug/l
 RT: 11.63 min Scan# 1596
 Delta R.T. 0.00 min
 Lab File: VW008573.D
 Acq: 08 Feb 2019 14:48

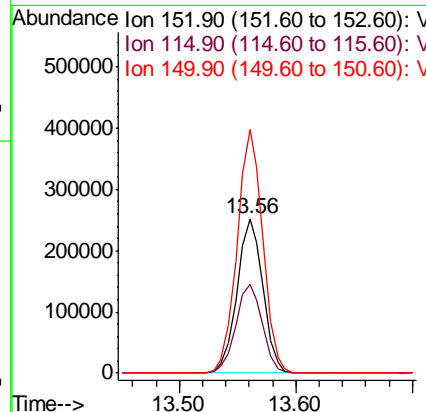
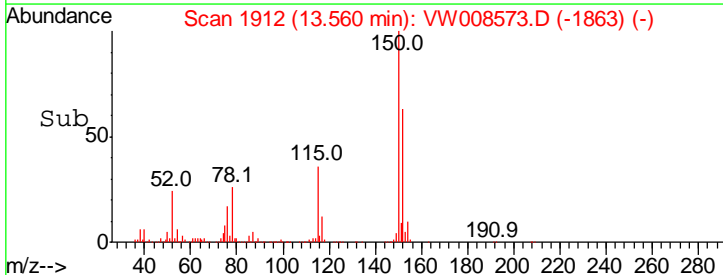
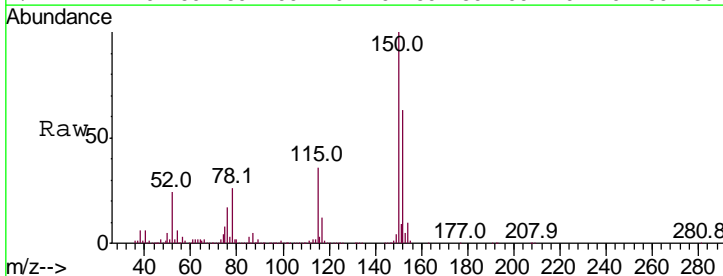
Instrument :
 MSVOA_W
 ClientSampled :
 RBR-200050

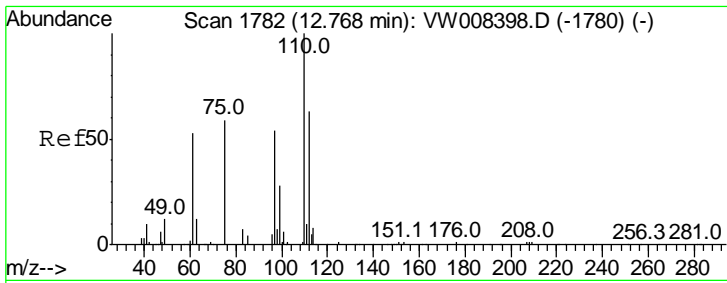
Tgt Ion	Resp	Lower	Upper
117	100		
82	56.5	45.4	68.0
119	31.7	26.2	39.4



#72
 1,4-Dichlorobenzene-d4
 Concen: 50.000 ug/l
 RT: 13.56 min Scan# 1912
 Delta R.T. 0.00 min
 Lab File: VW008573.D
 Acq: 08 Feb 2019 14:48

Tgt Ion	Resp	Lower	Upper
152	100		
115	59.0	29.9	89.7
150	157.2	0.0	351.4

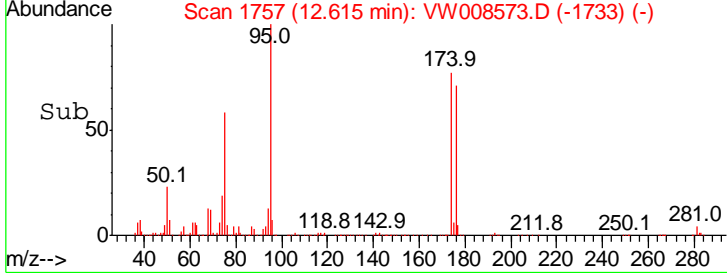
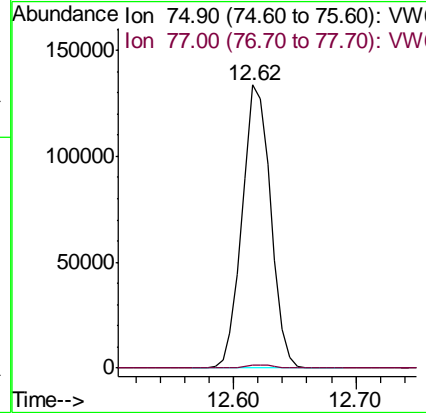
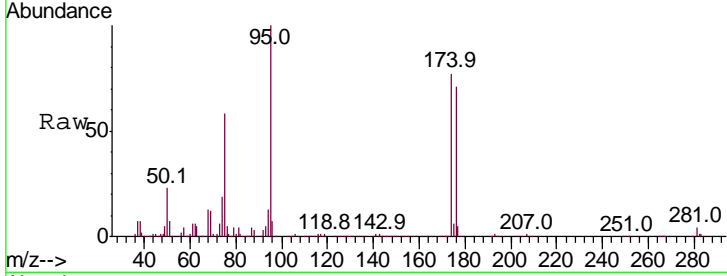




#76
 1,2,3-Trichloropropane
 Concen: 63.806 ug/l
 RT: 12.62 min Scan# 1757
 Delta R.T. -0.15 min
 Lab File: VW008573.D
 Acq: 08 Feb 2019 14:48

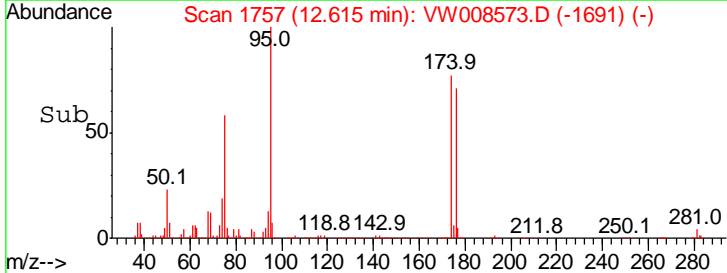
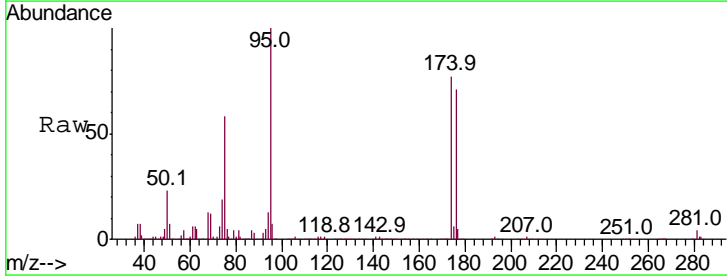
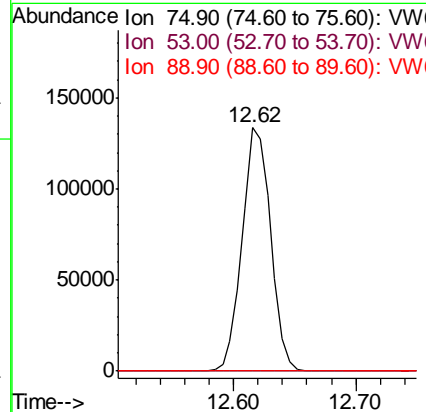
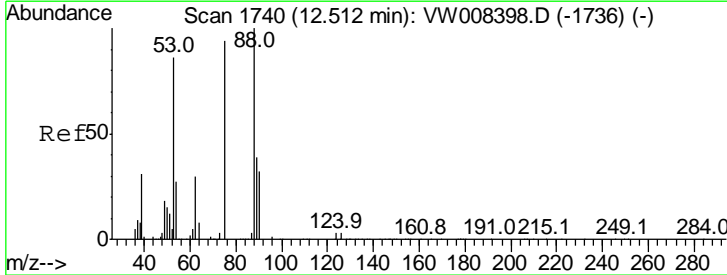
Instrument :
 MSVOA_W
 ClientSampled :
 RBR-200050

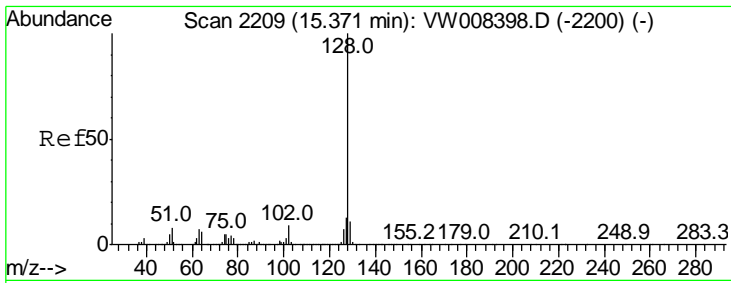
Tgt Ion: 75 Resp: 215378
 Ion Ratio Lower Upper
 75 100
 77 1.3 180.7 542.1#



#81
 trans-1,4-Dichloro-2-butene
 Concen: 126.021 ug/l
 RT: 12.62 min Scan# 1757
 Delta R.T. 0.10 min
 Lab File: VW008573.D
 Acq: 08 Feb 2019 14:48

Tgt Ion: 75 Resp: 215378
 Ion Ratio Lower Upper
 75 100
 53 0.0 76.0 114.0#
 89 0.1 35.4 53.0#





#95
 Naphthalene
 Concen: 18.778 ug/l
 RT: 15.37 min Scan# 2209
 Delta R.T. 0.00 min
 Lab File: VW008573.D
 Acq: 08 Feb 2019 14:48

Instrument : MSVOA_W
 ClientSampled : RBR-200050

Tot Ion:128 Resp: 265774

Ion	Ratio	Lower	Upper
128	100		
127	12.9	10.6	15.8
129	11.3	8.7	13.1

