

Data Path : Z:\voasrv\HPCHEM1\MSVOA_W\Data\VW021121\
 Data File : VW018087.D
 Acq On : 11 Feb 2021 16:01
 Operator : SY/VA
 Sample : M1370-08
 Misc : 6.51G/10ML/MSVOA_W/SOIL
 ALS Vial : 14 Sample Multiplier: 1

Instrument :
 MSVOA_W
 ClientSampleId :
 DBGY4

Integration Parameters: LSCINT.P

Integrator: RTE
 Smoothing : OFF Filtering: 5
 Sampling : 1 Min Area: 0 % of largest Peak
 Start Thrs: 0.2 Max Peaks: 100
 Stop Thrs : 0 Peak Location: TOP

If leading or trailing edge < 100 prefer < Baseline drop else tangent >
 Peak separation: 5

Method : Z:\voasrv\HPCHEM1\MSVOA_W\Method\SOM2WLM012921S.M
 Title : VOC Analysis

Signal : TIC: VW018087.D\data.ms

peak #	R.T. min	first scan	max scan	last scan	PK TY	peak height	corr. area	corr. % max.	% of total
1	2.355	70	74	81	rVB	7548	11603	0.38%	0.267%
2	2.891	156	162	169	rVB	8160	16855	0.55%	0.388%
3	3.348	235	237	243	rVB2	238	287	0.01%	0.007%
4	3.446	250	253	255	rBV2	161	219	0.01%	0.005%
5	3.623	280	282	286	rBV2	124	167	0.01%	0.004%
6	3.775	305	307	309	rVB	152	111	0.00%	0.003%
7	3.806	309	312	315	rBV	179	168	0.01%	0.004%
8	4.019	338	347	357	rVV	12092	30019	0.98%	0.692%
9	4.135	359	366	375	rVB3	954	2678	0.09%	0.062%
10	4.238	381	383	387	rBV2	145	176	0.01%	0.004%
11	4.336	397	399	402	rVV	132	162	0.01%	0.004%
12	4.921	488	495	504	rVB4	1562	4391	0.14%	0.101%
13	5.232	544	546	549	rVB2	118	106	0.00%	0.002%
14	5.305	556	558	560	rVB2	211	138	0.00%	0.003%
15	5.330	560	562	564	rBV	184	204	0.01%	0.005%
16	5.421	575	577	581	rVB2	130	95	0.00%	0.002%
17	5.458	581	583	584	rBV	150	132	0.00%	0.003%
18	5.519	591	593	594	rVB	232	118	0.00%	0.003%
19	5.537	594	596	598	rBV2	162	184	0.01%	0.004%
20	5.659	614	616	618	rBV2	107	109	0.00%	0.003%
21	5.702	621	623	626	rBV	125	176	0.01%	0.004%
22	5.762	631	633	636	rVB	183	154	0.01%	0.004%
23	5.799	636	639	640	rBV2	164	120	0.00%	0.003%
24	5.854	646	648	650	rVB2	262	132	0.00%	0.003%
25	5.939	659	662	663	rBV2	319	392	0.01%	0.009%
26	6.012	672	674	676	rBB2	139	126	0.00%	0.003%
27	6.323	721	725	726	rBV2	124	123	0.00%	0.003%
28	6.372	732	733	735	rBV	203	119	0.00%	0.003%
29	6.415	738	740	743	rVB	203	208	0.01%	0.005%
30	6.726	789	791	794	rBV2	103	103	0.00%	0.002%
31	6.835	805	809	811	rBV2	102	135	0.00%	0.003%
32	6.933	823	825	828	rBV	143	139	0.00%	0.003%
33	7.092	843	851	865	rBV3	3156	10757	0.35%	0.248%
34	7.226	871	873	876	rBV2	98	94	0.00%	0.002%
35	7.518	919	921	922	rBV	144	126	0.00%	0.003%
36	7.652	933	943	953	rVB	20746	49774	1.62%	1.147%

Data Path : Z:\voasrv\HPCHEM1\MSVOA_W\Data\VW021121\
 Data File : VW018087.D
 Acq On : 11 Feb 2021 16:01
 Operator : SY/VA
 Sample : M1370-08
 Misc : 6.51G/10ML/MSVOA_W/SOIL
 ALS Vial : 14 Sample Multiplier: 1

Instrument :
 MSVOA_W
 ClientSampleId :
 DBGY4

Integration Parameters: LSCINT.P

Integrator: RTE
 Smoothing : OFF
 Sampling : 1
 Start Thrs: 0.2
 Stop Thrs : 0

Filtering: 5
 Min Area: 0 % of largest Peak
 Max Peaks: 100
 Peak Location: TOP

If leading or trailing edge < 100 prefer < Baseline drop else tangent >
 Peak separation: 5

Method : Z:\voasrv\HPCHEM1\MSVOA_W\Method\SOM2WLM012921S.M
 Title : VOC Analysis

37	7.847	971	975	976	rVB2	146	138	0.00%	0.003%
38	8.024	1003	1004	1007	rBV2	281	238	0.01%	0.005%
39	8.152	1023	1025	1031	rVB3	244	412	0.01%	0.009%
40	8.323	1036	1053	1072	rBV	1352543	3074867	100.00%	70.864%
41	8.463	1075	1076	1079	rBV3	548	631	0.02%	0.015%
42	8.640	1103	1105	1107	rBV	194	102	0.00%	0.002%
43	8.695	1111	1114	1120	rVB4	637	1087	0.04%	0.025%
44	8.756	1122	1124	1126	rBV	143	101	0.00%	0.002%
45	8.841	1130	1138	1147	rBV	32944	66942	2.18%	1.543%
46	9.030	1166	1169	1171	rVV	195	167	0.01%	0.004%
47	9.195	1195	1196	1200	rVB2	161	147	0.00%	0.003%
48	9.274	1200	1209	1217	rBV	27216	55514	1.81%	1.279%
49	9.408	1228	1231	1236	rBV2	109	234	0.01%	0.005%
50	9.603	1262	1263	1267	rBV	132	132	0.00%	0.003%
51	9.695	1275	1278	1279	rVB2	112	99	0.00%	0.002%
52	9.756	1283	1288	1294	rVV3	447	836	0.03%	0.019%
53	9.817	1296	1298	1300	rBV	129	131	0.00%	0.003%
54	9.890	1305	1310	1314	rBV3	583	1041	0.03%	0.024%
55	9.951	1319	1320	1323	rVB2	162	106	0.00%	0.002%
56	10.036	1328	1334	1342	rVB2	7049	12604	0.41%	0.290%
57	10.213	1359	1363	1366	rBV2	514	695	0.02%	0.016%
58	10.323	1374	1381	1386	rBV	31277	54792	1.78%	1.263%
59	10.390	1386	1392	1405	rVB	406368	700441	22.78%	16.142%
60	10.536	1415	1416	1418	rBV	248	158	0.01%	0.004%
61	10.579	1418	1423	1429	rVV	3947	6458	0.21%	0.149%
62	10.701	1438	1443	1449	rVB2	653	1091	0.04%	0.025%
63	10.926	1474	1480	1489	rBV	12007	21286	0.69%	0.491%
64	11.091	1505	1507	1509	rBV2	102	122	0.00%	0.003%
65	11.170	1519	1520	1524	rVB2	225	199	0.01%	0.005%
66	11.201	1524	1525	1528	rBV	157	121	0.00%	0.003%
67	11.231	1528	1530	1534	rBV2	195	166	0.01%	0.004%
68	11.335	1546	1547	1549	rBV	198	110	0.00%	0.003%
69	11.371	1552	1553	1555	rVB	137	95	0.00%	0.002%
70	11.390	1555	1556	1560	rVB2	184	132	0.00%	0.003%
71	11.420	1560	1561	1566	rBV	157	176	0.01%	0.004%
72	11.457	1566	1567	1570	rVV2	169	140	0.00%	0.003%
73	11.505	1573	1575	1577	rVV	197	135	0.00%	0.003%
74	11.627	1589	1595	1603	rBV	20110	34342	1.12%	0.791%
75	11.713	1606	1609	1610	rBV	198	236	0.01%	0.005%
76	11.835	1626	1629	1632	rBV2	479	616	0.02%	0.014%

Data Path : Z:\voasrv\HPCHEM1\MSVOA_W\Data\VW021121\
 Data File : VW018087.D
 Acq On : 11 Feb 2021 16:01
 Operator : SY/VA
 Sample : M1370-08
 Misc : 6.51G/10ML/MSVOA_W/SOIL
 ALS Vial : 14 Sample Multiplier: 1

Instrument :
 MSVOA_W
 ClientSampleId :
 DBGY4

Integration Parameters: LSCINT.P
 Integrator: RTE
 Smoothing : OFF
 Sampling : 1
 Start Thrs : 0.2
 Stop Thrs : 0
 Filtering: 5
 Min Area: 0 % of largest Peak
 Max Peaks: 100
 Peak Location: TOP

If leading or trailing edge < 100 prefer < Baseline drop else tangent >
 Peak separation: 5

Method : Z:\voasrv\HPCHEM1\MSVOA_W\Method\SOM2WLM012921S.M
 Title : VOC Analysis

77	11.920	1641	1643	1647	rVB3	275	300	0.01%	0.007%
78	12.133	1677	1678	1680	rBV2	136	117	0.00%	0.003%
79	12.267	1698	1700	1703	rVB2	109	135	0.00%	0.003%
80	12.469	1728	1733	1736	rVB3	314	585	0.02%	0.013%
81	12.554	1746	1747	1751	rVB2	199	215	0.01%	0.005%
82	12.609	1751	1756	1760	rBV3	1786	2764	0.09%	0.064%
83	12.694	1764	1770	1781	rVV	18563	33178	1.08%	0.765%
84	12.920	1800	1807	1813	rBV2	22901	40430	1.31%	0.932%
85	13.048	1822	1828	1833	rBV3	6490	11037	0.36%	0.254%
86	13.176	1848	1849	1851	rBV2	181	181	0.01%	0.004%
87	13.200	1851	1853	1858	rVB3	549	677	0.02%	0.016%
88	13.249	1858	1861	1866	rBV3	208	494	0.02%	0.011%
89	13.377	1877	1882	1885	rBV2	992	1502	0.05%	0.035%
90	13.407	1885	1887	1888	rVB	485	299	0.01%	0.007%
91	13.444	1890	1893	1896	rBV2	460	645	0.02%	0.015%
92	13.493	1896	1901	1907	rBV	15120	23597	0.77%	0.544%
93	13.554	1907	1911	1917	rBV	10689	16473	0.54%	0.380%
94	13.615	1918	1921	1927	rBV5	2385	3907	0.13%	0.090%
95	13.853	1955	1960	1965	rBV2	10465	16949	0.55%	0.391%
96	13.987	1979	1982	1985	rBV2	926	1132	0.04%	0.026%
97	14.188	2012	2015	2021	rBV5	844	1557	0.05%	0.036%
98	14.438	2051	2056	2061	rVB2	4406	6809	0.22%	0.157%
99	14.895	2129	2131	2134	rVB2	327	228	0.01%	0.005%
100	15.066	2154	2159	2166	rBV6	4409	8276	0.27%	0.191%

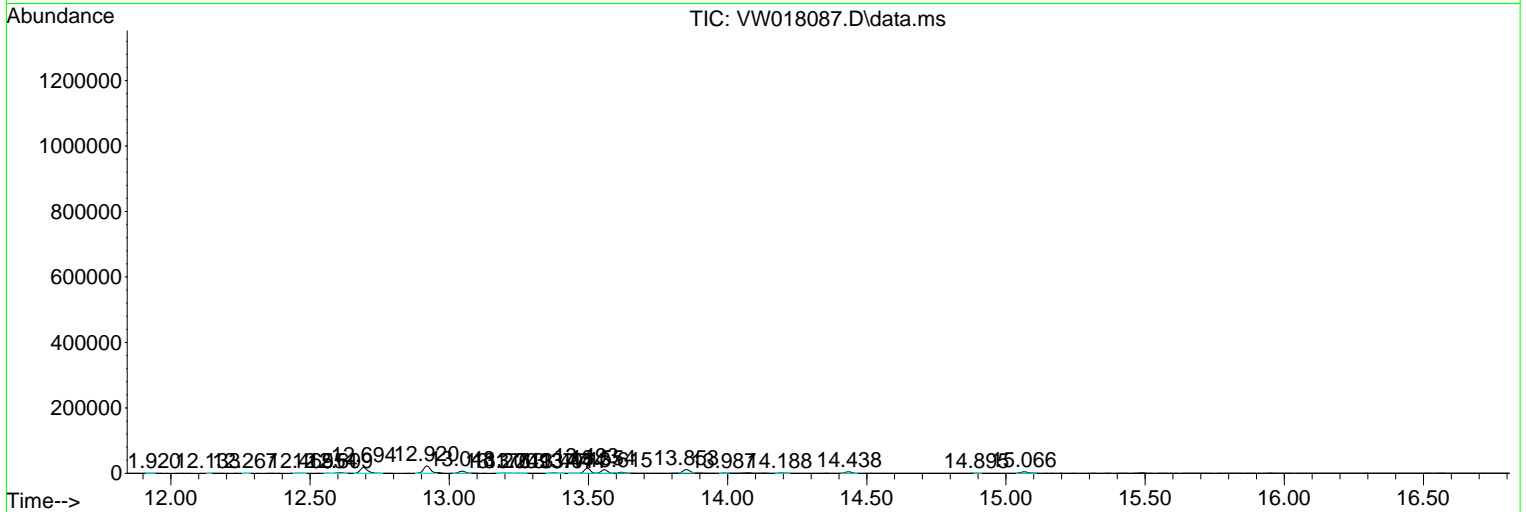
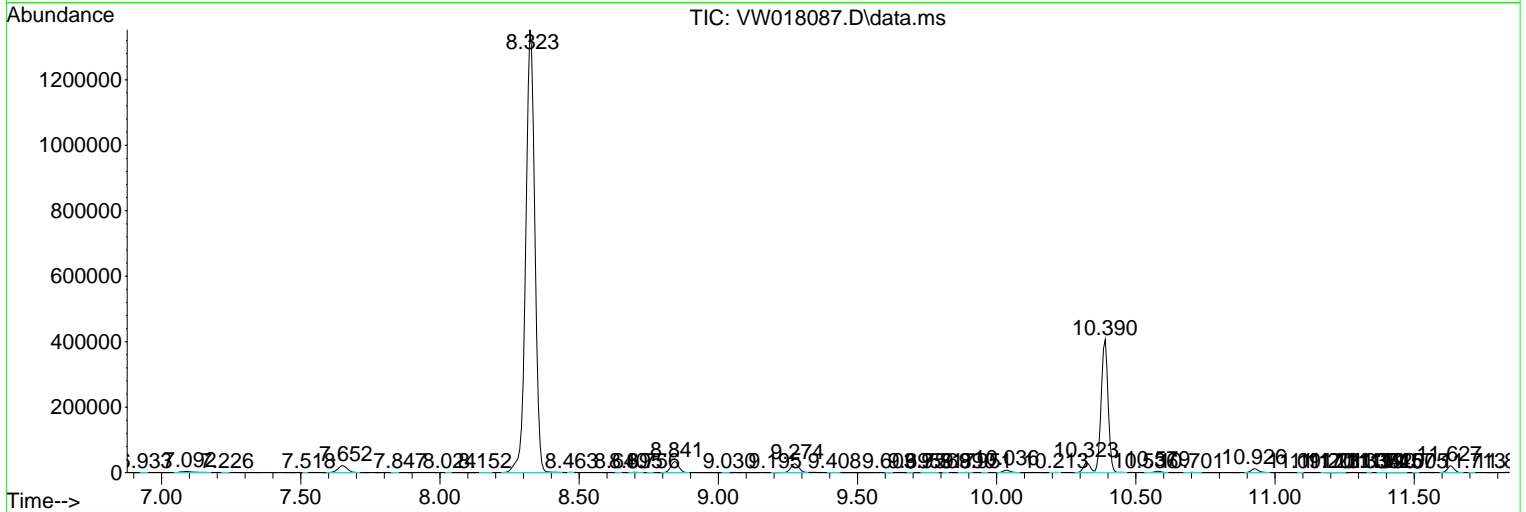
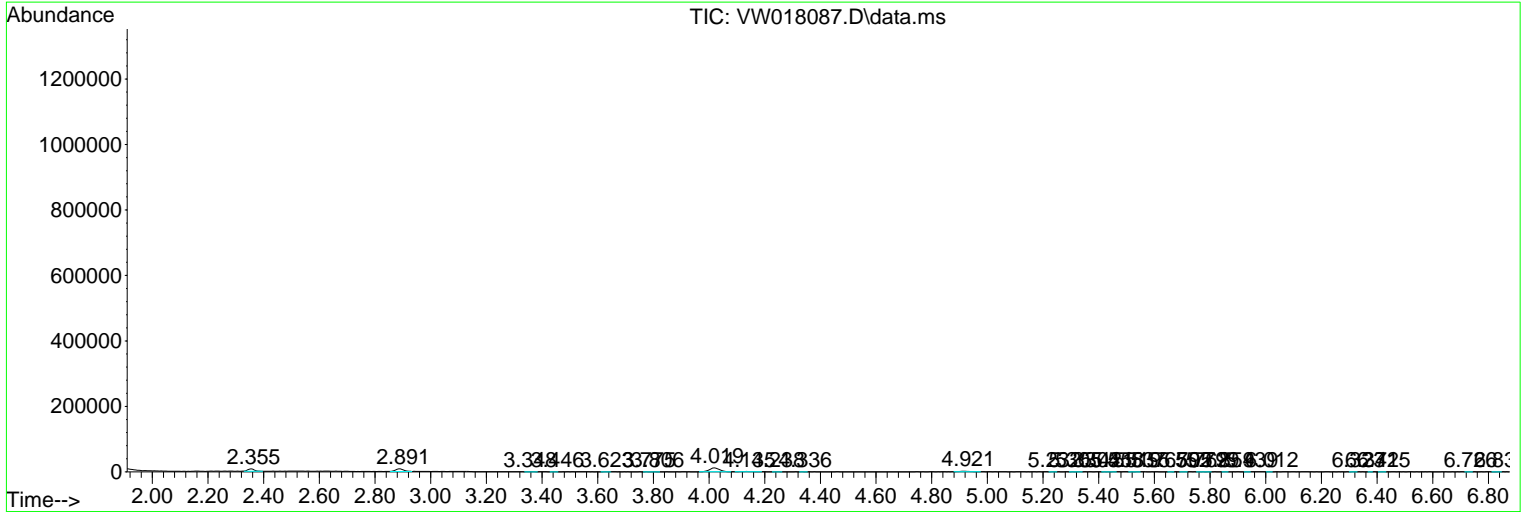
Sum of corrected areas: 4339127

Data Path : Z:\voasrv\HPCHEM1\MSVOA_W\Data\VW021121\
 Data File : VW018087.D
 Acq On : 11 Feb 2021 16:01
 Operator : SY/VA
 Sample : M1370-08
 Misc : 6.51G/10ML/MSVOA_W/SOIL
 ALS Vial : 14 Sample Multiplier: 1

Instrument :
 MSVOA_W
 ClientSampleId :
 DBGY4

Quant Method : Z:\voasrv\HPCHEM1\MSVOA_W\Method\SOM2WLM012921S.M
 Quant Title : VOC Analysis

TIC Library : C:\DATABASE\NIST11.L
 TIC Integration Parameters: LSCINT.P



Data Path : Z:\voasrv\HPCHEM1\MSVOA_W\Data\VW021121\
 Data File : VW018087.D
 Acq On : 11 Feb 2021 16:01
 Operator : SY/VA
 Sample : M1370-08
 Misc : 6.51G/10ML/MSVOA_W/SOIL
 ALS Vial : 14 Sample Multiplier: 1

Instrument :
 MSVOA_W
 ClientSampleId :
 DBGY4

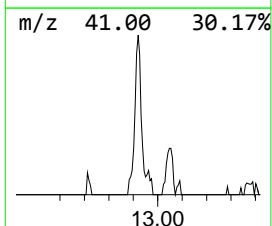
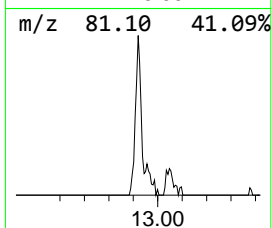
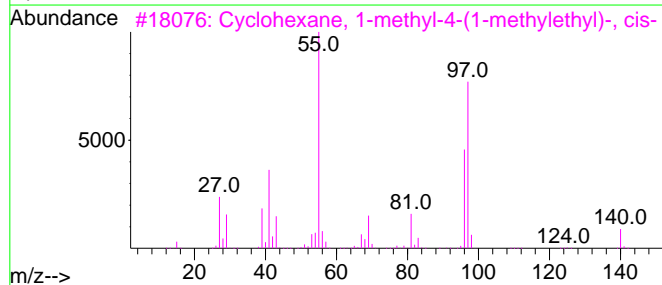
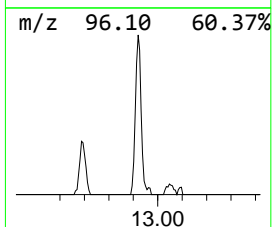
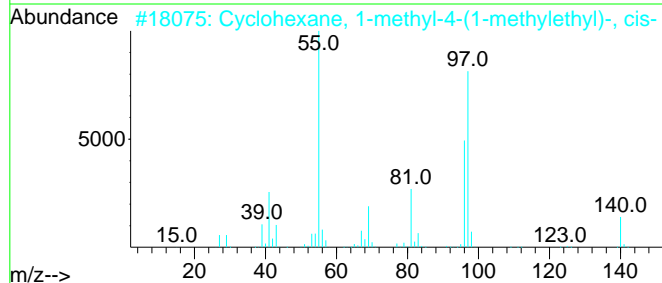
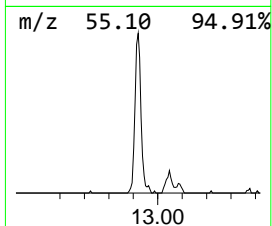
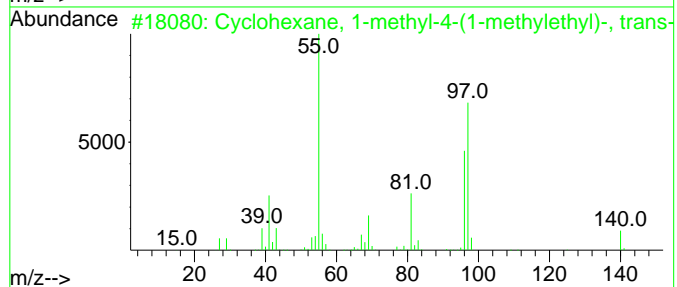
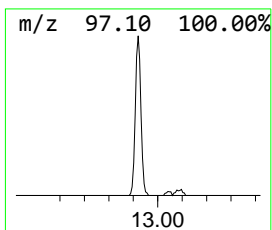
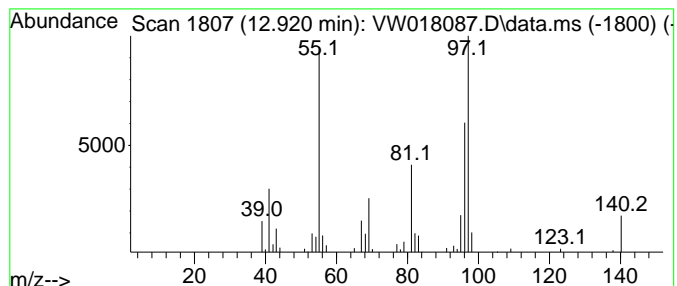
Quant Method : Z:\voasrv\HPCHEM1\MSVOA_W\Method\SOM2WLM012921S.M
 Quant Title : VOC Analysis

TIC Library : C:\DATABASE\NIST11.L
 TIC Integration Parameters: LSCINT.P

 Peak Number 3 (DEL) Alkane: Cyclic12.920 Concentration Rank 1

R.T.	EstConc	Area	Relative to ISTD	R.T.
12.920	61.36 ug/L	40430	1,4-Dichlorobenzene-d4	13.560

Hit#	of	5	Tentative ID	MW	MolForm	CAS#	Qual
1			Cyclohexane, 1-methyl-4-(1-methyl-4-(1-methylethyl)-, trans-	140	C10H20	001678-82-6	90
2			Cyclohexane, 1-methyl-4-(1-methyl-4-(1-methylethyl)-, cis-	140	C10H20	006069-98-3	87
3			Cyclohexane, 1-methyl-4-(1-methyl-4-(1-methylethyl)-, trans-	140	C10H20	006069-98-3	83
4			Cyclohexane, 1-methyl-4-(1-methyl-4-(1-methylethyl)-, cis-	140	C10H20	001678-82-6	80
5			Oxalic acid, di(cyclohexylmethyl)-	282	C16H26O4	1000309-68-5	78



Data Path : Z:\voasrv\HPCHEM1\MSVOA_W\Data\VW021121\
 Data File : VW018087.D
 Acq On : 11 Feb 2021 16:01
 Operator : SY/VA
 Sample : M1370-08
 Misc : 6.51G/10ML/MSVOA_W/SOIL
 ALS Vial : 14 Sample Multiplier: 1

Instrument :
 MSVOA_W
 ClientSampleId :
 DBGY4

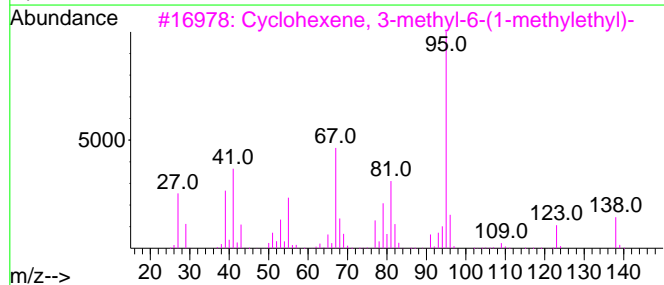
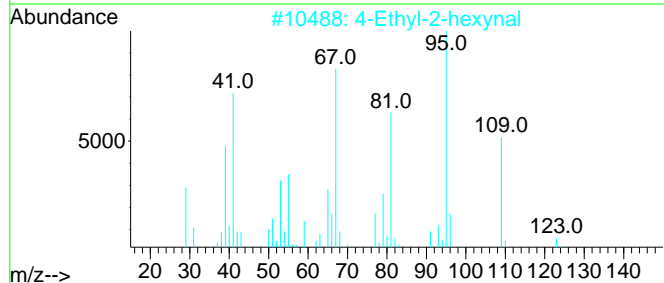
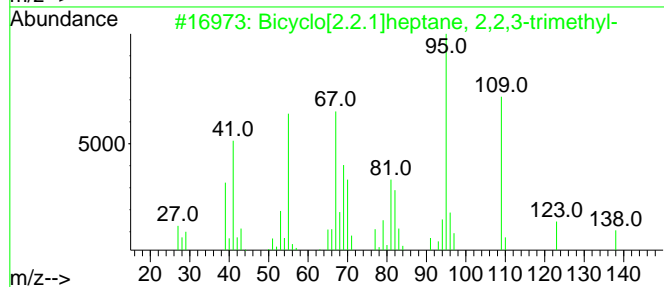
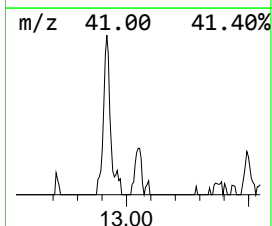
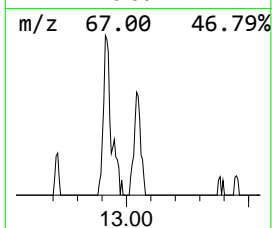
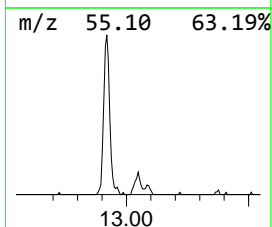
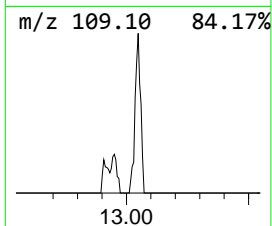
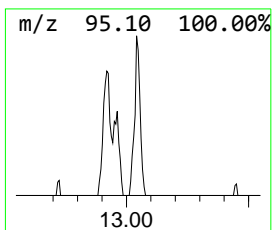
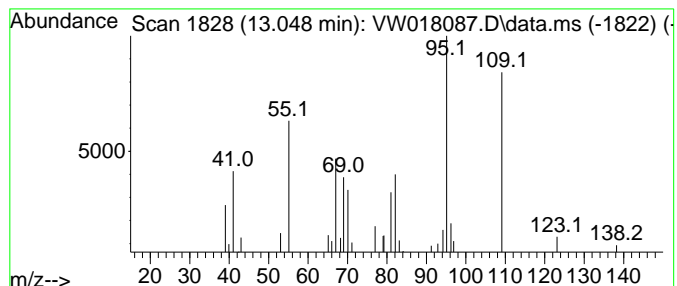
Quant Method : Z:\voasrv\HPCHEM1\MSVOA_W\Method\SOM2WLM012921S.M
 Quant Title : VOC Analysis

TIC Library : C:\DATABASE\NIST11.L
 TIC Integration Parameters: LSCINT.P

 Peak Number 4 Bicyclo[2.2.1]heptane, 2,2,... Concentration Rank 3

R.T.	EstConc	Area	Relative to ISTD	R.T.
13.048	16.75 ug/L	11037	1,4-Dichlorobenzene-d4	13.560

Hit#	of	5	Tentative ID	MW	MolForm	CAS#	Qual
1			Bicyclo[2.2.1]heptane, 2,2,3-tri...	138	C10H18	000473-19-8	94
2			4-Ethyl-2-hexynal	124	C8H12O	071932-97-3	59
3			Cyclohexene, 3-methyl-6-(1-methy...	138	C10H18	005256-65-5	47
4			Cyclopentane, (3-methylbutylidene)-	138	C10H18	053366-51-1	47
5			Bicyclo[2.2.1]heptane, 1,7,7-tri...	138	C10H18	000464-15-3	46



Data Path : Z:\voasrv\HPCHEM1\MSVOA_W\Data\VW021121\
 Data File : VW018087.D
 Acq On : 11 Feb 2021 16:01
 Operator : SY/VA
 Sample : M1370-08
 Misc : 6.51G/10ML/MSVOA_W/SOIL
 ALS Vial : 14 Sample Multiplier: 1

Instrument :
 MSVOA_W
 ClientSampleID :
 DBGY4

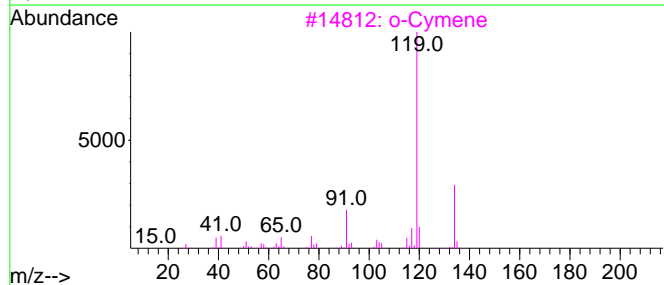
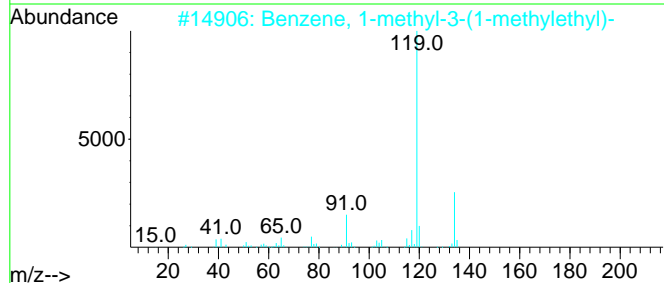
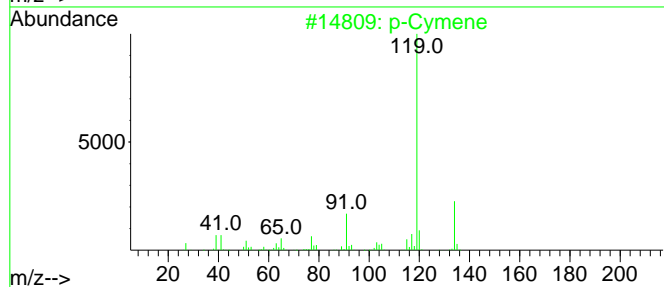
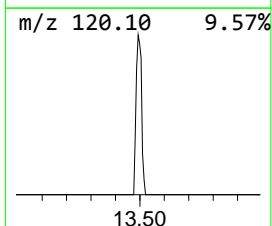
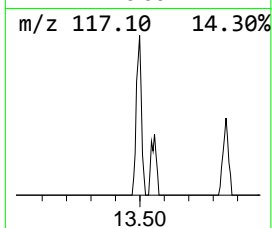
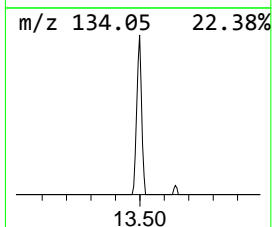
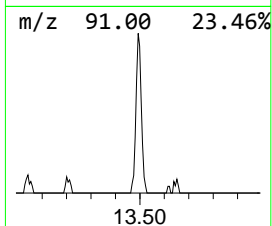
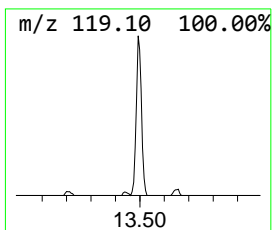
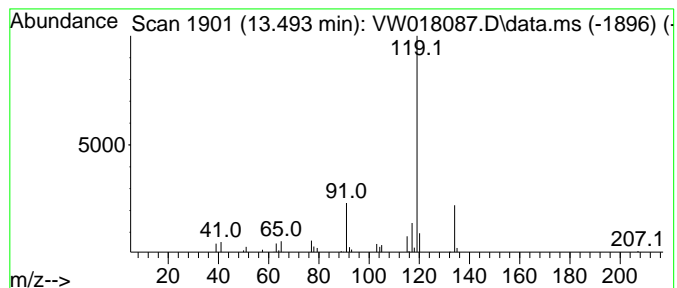
Quant Method : Z:\voasrv\HPCHEM1\MSVOA_W\Method\SOM2WLM012921S.M
 Quant Title : VOC Analysis

TIC Library : C:\DATABASE\NIST11.L
 TIC Integration Parameters: LSCINT.P

 Peak Number 6 p-Cymene Concentration Rank 2

R.T.	EstConc	Area	Relative to ISTD	R.T.
13.493	35.81 ug/L	23597	1,4-Dichlorobenzene-d4	13.560

Hit#	of 5	Tentative ID	MW	MolForm	CAS#	Qual
1		p-Cymene	134	C10H14	000099-87-6	94
2		Benzene, 1-methyl-3-(1-methyleth...	134	C10H14	000535-77-3	91
3		o-Cymene	134	C10H14	000527-84-4	91
4		Benzene, 1-methyl-3-(1-methyleth...	134	C10H14	000535-77-3	91
5		o-Cymene	134	C10H14	000527-84-4	91



Data Path : Z:\voasrv\HPCHEM1\MSVOA_W\Data\VW021121\
 Data File : VW018087.D
 Acq On : 11 Feb 2021 16:01
 Operator : SY/VA
 Sample : M1370-08
 Misc : 6.51G/10ML/MSVOA_W/SOIL
 ALS Vial : 14 Sample Multiplier: 1

Instrument :
 MSVOA_W
 ClientSampled :
 DBGY4

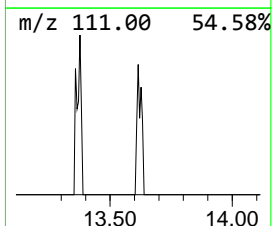
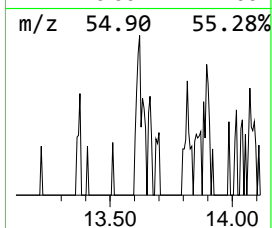
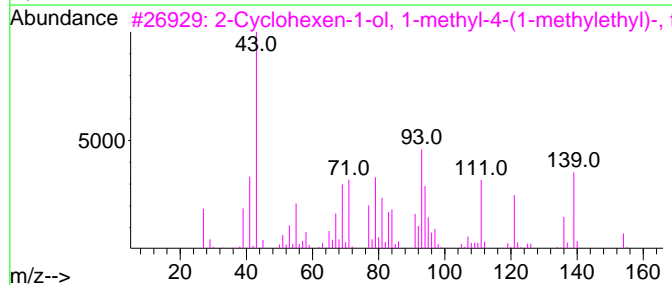
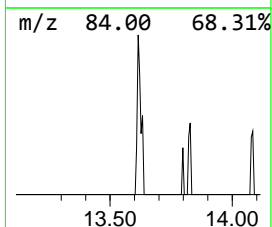
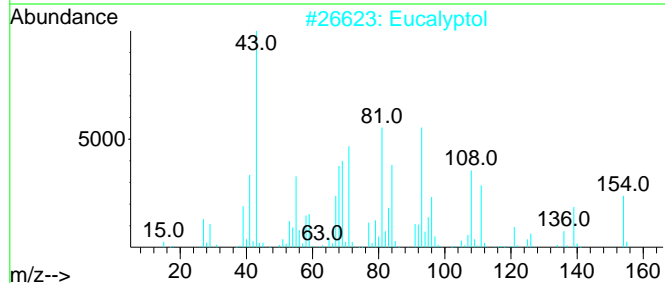
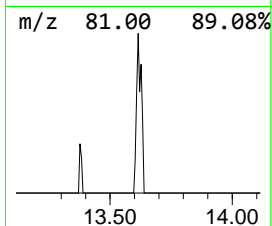
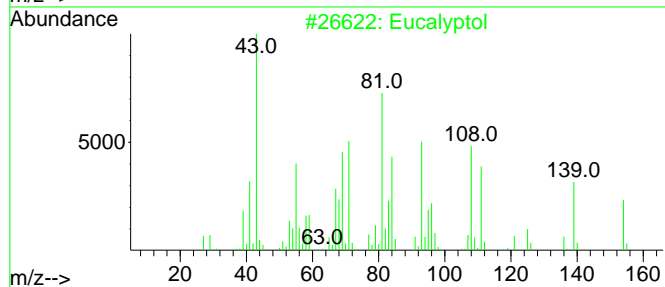
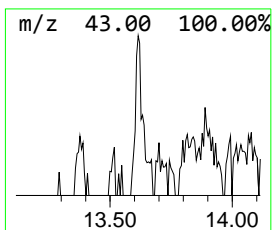
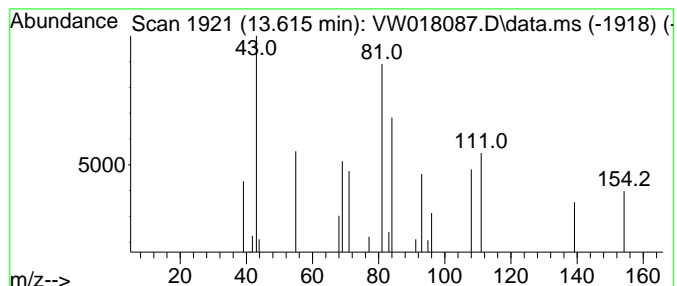
Quant Method : Z:\voasrv\HPCHEM1\MSVOA_W\Method\SOM2WLM012921S.M
 Quant Title : VOC Analysis

TIC Library : C:\DATABASE\NIST11.L
 TIC Integration Parameters: LSCINT.P

 Peak Number 7 Eucalyptol Concentration Rank 6

R.T.	EstConc	Area	Relative to ISTD	R.T.
13.615	5.93 ug/L	3907	1,4-Dichlorobenzene-d4	13.560

Hit#	of	5	Tentative ID	MW	MolForm	CAS#	Qual
1			Eucalyptol	154	C10H18O	000470-82-6	70
2			Eucalyptol	154	C10H18O	000470-82-6	49
3			2-Cyclohexen-1-ol, 1-methyl-4-(1...	154	C10H18O	029803-81-4	27
4			Cyclodecanone	154	C10H18O	001502-06-3	22
5			7,8-Diazabicyclo[4.2.0]octane, 1...	156	C7H12N2O2	169522-32-1	14



Data Path : Z:\voasrv\HPCHEM1\MSVOA_W\Data\VW021121\
 Data File : VW018087.D
 Acq On : 11 Feb 2021 16:01
 Operator : SY/VA
 Sample : M1370-08
 Misc : 6.51G/10ML/MSVOA_W/SOIL
 ALS Vial : 14 Sample Multiplier: 1

Instrument :
 MSVOA_W
 ClientSampled :
 DBGY4

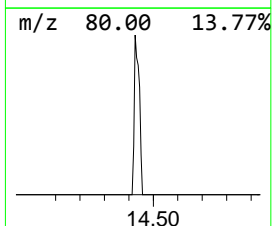
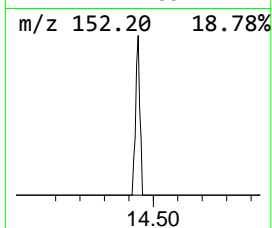
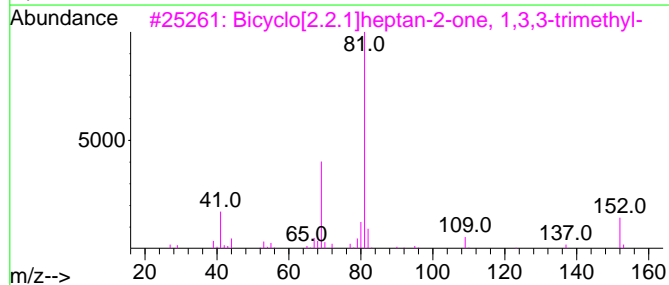
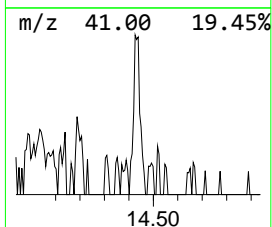
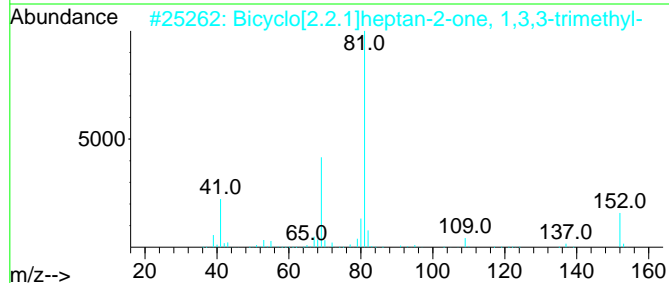
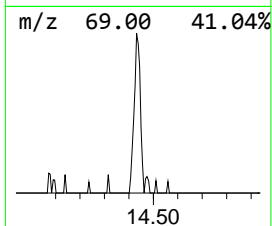
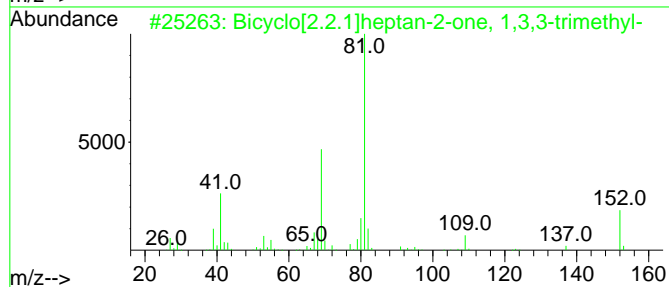
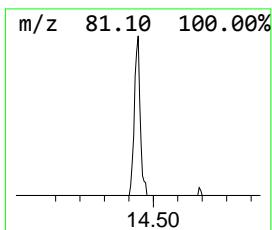
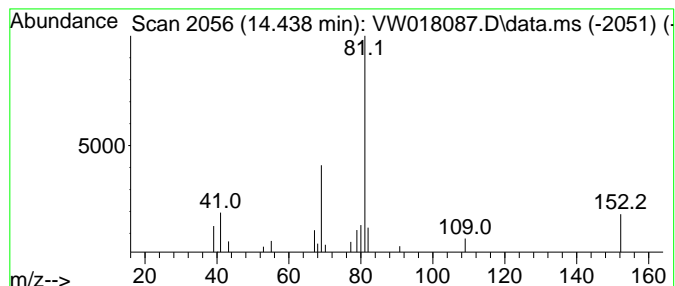
Quant Method : Z:\voasrv\HPCHEM1\MSVOA_W\Method\SOM2WLM012921S.M
 Quant Title : VOC Analysis

TIC Library : C:\DATABASE\NIST11.L
 TIC Integration Parameters: LSCINT.P

 Peak Number 10 Bicyclo[2.2.1]heptan-2-one,... Concentration Rank 5

R.T.	EstConc	Area	Relative to ISTD	R.T.
14.438	10.33 ug/L	6809	1,4-Dichlorobenzene-d4	13.560

Hit#	of	5	Tentative ID	MW	MolForm	CAS#	Qual
1			Bicyclo[2.2.1]heptan-2-one, 1,3,...	152	C10H16O	001195-79-5	86
2			Bicyclo[2.2.1]heptan-2-one, 1,3,...	152	C10H16O	001195-79-5	80
3			Bicyclo[2.2.1]heptan-2-one, 1,3,...	152	C10H16O	001195-79-5	80
4			L-Fenchone	152	C10H16O	007787-20-4	78
5			L-Fenchone	152	C10H16O	007787-20-4	72



Data Path : Z:\voasrv\HPCHEM1\MSVOA_W\Data\VW021121\
 Data File : VW018087.D
 Acq On : 11 Feb 2021 16:01
 Operator : SY/VA
 Sample : M1370-08
 Misc : 6.51G/10ML/MSVOA_W/SOIL
 ALS Vial : 14 Sample Multiplier: 1

Instrument :
 MSVOA_W
 ClientSampled :
 DBGY4

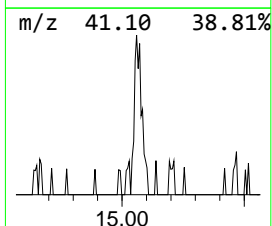
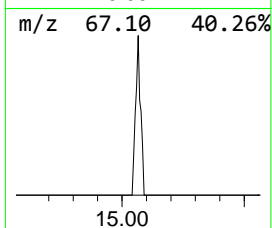
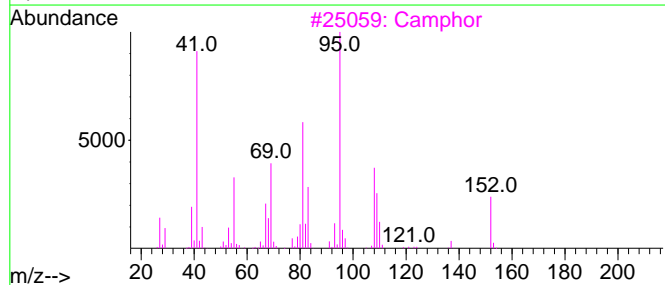
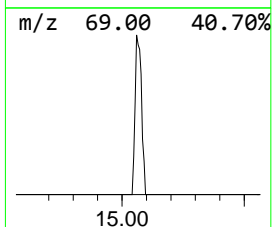
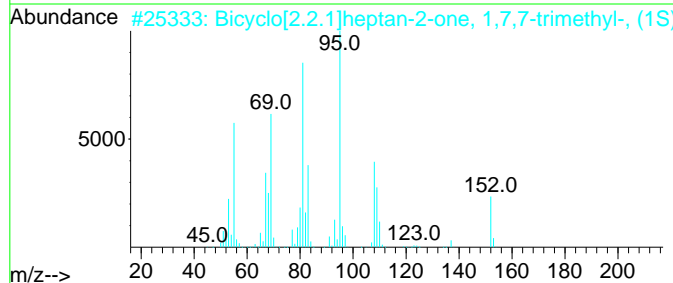
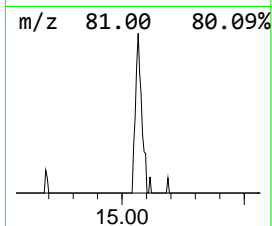
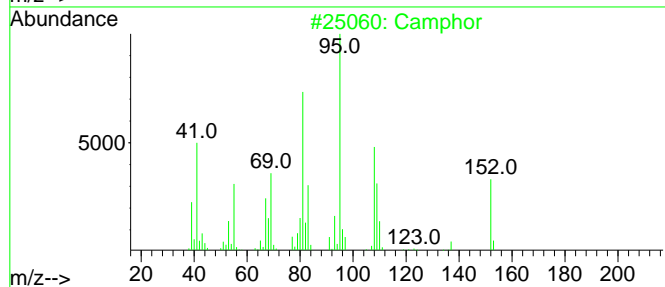
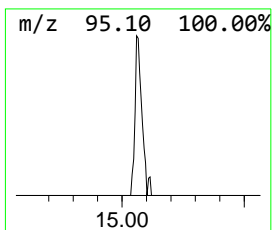
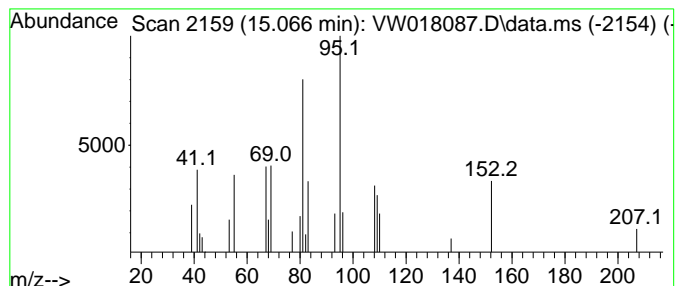
Quant Method : Z:\voasrv\HPCHEM1\MSVOA_W\Method\SOM2WLM012921S.M
 Quant Title : VOC Analysis

TIC Library : C:\DATABASE\NIST11.L
 TIC Integration Parameters: LSCINT.P

 Peak Number 11 Camphor Concentration Rank 4

R.T.	EstConc	Area	Relative to ISTD	R.T.
15.066	12.56 ug/L	8276	1,4-Dichlorobenzene-d4	13.560

Hit#	of 5	Tentative ID	MW	MolForm	CAS#	Qual
1		Camphor	152	C10H16O	000076-22-2	90
2		Bicyclo[2.2.1]heptan-2-one, 1,7,...	152	C10H16O	000464-48-2	78
3		Camphor	152	C10H16O	000076-22-2	72
4		Bicyclo[2.2.1]heptan-2-one, 1,7,...	152	C10H16O	000464-48-2	72
5		Camphor	152	C10H16O	000076-22-2	72



Data Path : Z:\voasrv\HPCHEM1\MSVOA_W\Data\VW021121\
Data File : VW018087.D
Acq On : 11 Feb 2021 16:01
Operator : SY/VA
Sample : M1370-08
Misc : 6.51G/10ML/MSVOA_W/SOIL
ALS Vial : 14 Sample Multiplier: 1

Instrument :
MSVOA_W
ClientSampleId :
DBGY4

Quant Method : Z:\voasrv\HPCHEM1\MSVOA_W\Method\SOM2WLM012921S.M
Quant Title : VOC Analysis

TIC Library : C:\DATABASE\NIST11.L
TIC Integration Parameters: LSCINT.P

TIC Top Hit name	RT	EstConc	Units	Response	--Internal Standard--			
					#	RT	Resp	Conc
(DEL) Alkane: C...	12.920	61.4	ug/L	40430	3	13.560	16473	25.0
Bicyclo[2.2.1]h...	13.048	16.8	ug/L	11037	3	13.560	16473	25.0
p-Cymene	13.493	35.8	ug/L	23597	3	13.560	16473	25.0
Eucalyptol	13.615	5.9	ug/L	3907	3	13.560	16473	25.0
Bicyclo[2.2.1]h...	14.438	10.3	ug/L	6809	3	13.560	16473	25.0
Camphor	15.066	12.6	ug/L	8276	3	13.560	16473	25.0