

Data Path : Z:\VOASRV\HPCHEM1\MSVOA W\DATA\VW021219\
 Data File : VW008631.D
 Acq On : 12 Feb 2019 18:59
 Operator : SY/VA
 Sample : K1343-15
 Misc : 7.47G/5ML/MSVOA W/SOIL
 ALS Vial : 19 Sample Multiplier: 1

Instrument :
 MSVOA_W
 ClientSampleId :
 JC-02-021119-H

Integration Parameters: RTEINT.P

Integrator: RTE
 Smoothing : ON Filtering: 5
 Sampling : 1 Min Area: 3 % of largest Peak
 Start Thrs: 0.2 Max Peaks: 100
 Stop Thrs : 0 Peak Location: TOP

If leading or trailing edge < 100 prefer < Baseline drop else tangent >
 Peak separation: 5

Method : Z:\VOASRV\HPCHEM1\MSVOA_W\METHOD\82W012419S.M
 Title : SW846 8260

Signal : TIC

peak #	R.T. min	first scan	max scan	last scan	PK TY	peak height	corr. area	corr. % max.	% of total
1	2.355	64	74	80	rBV3	10772	35133	1.62%	0.167%
2	4.111	354	362	375	rBV	31328	88806	4.09%	0.422%
3	4.909	484	493	505	rBV3	22512	82583	3.81%	0.392%
4	7.141	847	859	873	rBV	102992	303837	14.01%	1.443%
5	7.878	970	980	985	rBV	316234	741411	34.19%	3.521%
6	7.945	985	991	1002	rVB	535960	1181022	54.46%	5.610%
7	8.256	1030	1042	1044	rBV	89643	207317	9.56%	0.985%
8	8.305	1044	1050	1060	rVB	310739	700351	32.29%	3.326%
9	8.842	1129	1138	1147	rBV	794591	1594059	73.50%	7.571%
10	10.323	1373	1381	1388	rVV	1227149	2168654	100.00%	10.301%
11	10.384	1388	1391	1398	rVB	28876	49082	2.26%	0.233%
12	10.707	1429	1444	1449	rBV	42403	83515	3.85%	0.397%
13	11.067	1493	1503	1508	rBV	18286	36576	1.69%	0.174%
14	11.439	1555	1564	1571	rVB2	23074	48413	2.23%	0.230%
15	11.628	1586	1595	1605	rBV	1075714	1860894	85.81%	8.839%
16	11.841	1622	1630	1634	rBV2	29469	57704	2.66%	0.274%
17	12.164	1673	1683	1690	rBV	28310	62085	2.86%	0.295%
18	12.621	1750	1758	1766	rVB2	955848	1608878	74.19%	7.642%
19	12.804	1778	1788	1792	rBV4	12872	30574	1.41%	0.145%
20	12.871	1792	1799	1801	rBV	42182	68645	3.17%	0.326%
21	12.902	1801	1804	1806	rVV	36216	54164	2.50%	0.257%
22	12.944	1806	1811	1817	rVB2	85855	158975	7.33%	0.755%
23	13.109	1830	1838	1843	rBV	56429	100750	4.65%	0.479%
24	13.255	1856	1862	1866	rBV	86950	136905	6.31%	0.650%
25	13.444	1888	1893	1897	rBV2	42418	67176	3.10%	0.319%
26	13.493	1897	1901	1906	rVV3	21286	41096	1.90%	0.195%
27	13.560	1906	1912	1927	rVB2	1007175	1826979	84.24%	8.678%
28	13.725	1934	1939	1940	rBV2	29866	40928	1.89%	0.194%
29	13.755	1940	1944	1947	rVV2	137573	225868	10.42%	1.073%
30	13.792	1947	1950	1960	rVB3	118816	228261	10.53%	1.084%
31	13.877	1960	1964	1969	rBV2	117183	176995	8.16%	0.841%
32	13.950	1971	1976	1982	rBV	70241	106769	4.92%	0.507%
33	14.017	1982	1987	1989	rBV	55506	96508	4.45%	0.458%
34	14.042	1989	1991	1994	rVV	79074	105704	4.87%	0.502%

Data Path : Z:\VOASRV\HPCHEM1\MSVOA W\DATA\VW021219\
 Data File : VW008631.D
 Acq On : 12 Feb 2019 18:59
 Operator : SY/VA
 Sample : K1343-15
 Misc : 7.47G/5ML/MSVOA W/SOIL
 ALS Vial : 19 Sample Multiplier: 1

Instrument :
 MSVOA_W
 ClientSampleId :
 JC-02-021119-H

Integration Parameters: RTEINT.P

Integrator: RTE
 Smoothing : ON
 Sampling : 1
 Start Thrs: 0.2
 Stop Thrs : 0

Filtering: 5
 Min Area: 3 % of largest Peak
 Max Peaks: 100
 Peak Location: TOP

If leading or trailing edge < 100 prefer < Baseline drop else tangent >
 Peak separation: 5

Method : Z:\VOASRV\HPCHEM1\MSVOA_W\METHOD\82W012419S.M
 Title : SW846 8260

35	14.097	1994	2000	2006	rVB3	138418	276739	12.76%	1.314%
36	14.164	2006	2011	2013	rBV4	22188	35632	1.64%	0.169%
37	14.206	2013	2018	2023	rVB	145284	244434	11.27%	1.161%
38	14.261	2023	2027	2029	rBV3	17199	28491	1.31%	0.135%
39	14.341	2035	2040	2044	rBV2	68269	125190	5.77%	0.595%
40	14.389	2044	2048	2051	rVV5	54966	93630	4.32%	0.445%
41	14.426	2051	2054	2057	rVV2	80770	121493	5.60%	0.577%
42	14.462	2057	2060	2064	rVB	128127	161126	7.43%	0.765%
43	14.505	2064	2067	2070	rVB2	72653	84067	3.88%	0.399%
44	14.548	2070	2074	2080	rVB3	49733	80021	3.69%	0.380%
45	14.645	2081	2090	2094	rBV2	73446	143210	6.60%	0.680%
46	14.694	2094	2098	2101	rBV3	122741	221061	10.19%	1.050%
47	14.731	2101	2104	2110	rVB2	171236	252531	11.64%	1.199%
48	14.810	2110	2117	2122	rBV4	326455	802380	37.00%	3.811%
49	14.962	2137	2142	2149	rVB	278815	446767	20.60%	2.122%
50	15.029	2150	2153	2154	rBV3	30049	29539	1.36%	0.140%
51	15.072	2155	2160	2163	rBV3	87821	144744	6.67%	0.687%
52	15.182	2171	2178	2186	rVB3	134196	319666	14.74%	1.518%
53	15.334	2198	2203	2206	rBV4	61490	116128	5.35%	0.552%
54	15.426	2213	2218	2223	rBV	143216	246375	11.36%	1.170%
55	15.481	2223	2227	2229	rBV3	74965	121138	5.59%	0.575%
56	15.560	2237	2240	2249	rVB2	137522	251171	11.58%	1.193%
57	15.663	2249	2257	2264	rBV4	119699	280223	12.92%	1.331%
58	15.737	2265	2269	2273	rVV6	30859	51707	2.38%	0.246%
59	15.834	2278	2285	2286	rVV3	76073	151054	6.97%	0.717%
60	15.871	2286	2291	2300	rVB	292092	557640	25.71%	2.649%
61	15.956	2302	2305	2310	rVV4	20554	34064	1.57%	0.162%
62	16.035	2311	2318	2325	rBV3	60663	151048	6.97%	0.717%
63	16.188	2333	2343	2348	rBV2	156031	382019	17.62%	1.814%
64	16.383	2368	2375	2381	rBV4	120055	262808	12.12%	1.248%
65	16.450	2381	2386	2391	rVV	68400	150245	6.93%	0.714%
66	16.505	2391	2395	2400	rVB	74178	134416	6.20%	0.638%
67	16.657	2412	2420	2426	rBV5	60223	176492	8.14%	0.838%

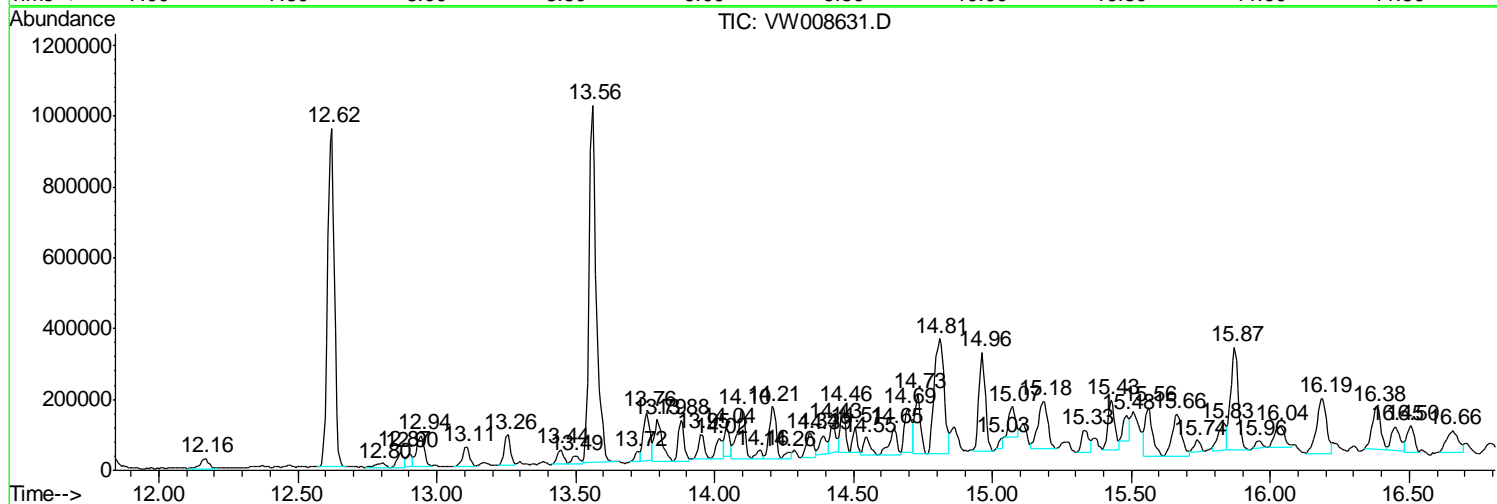
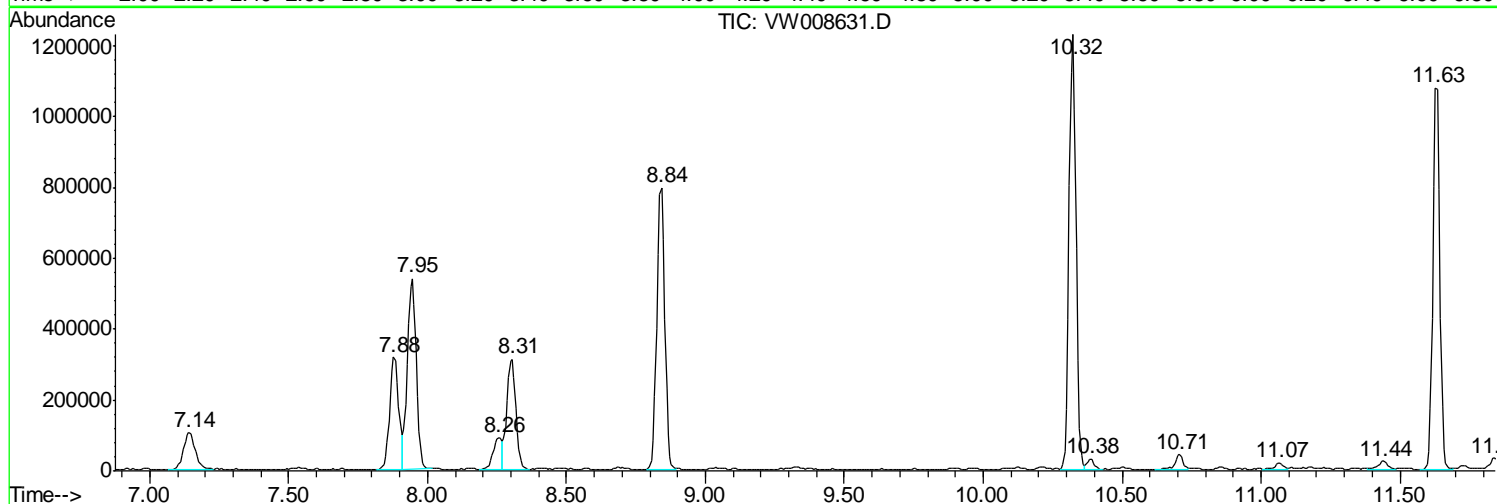
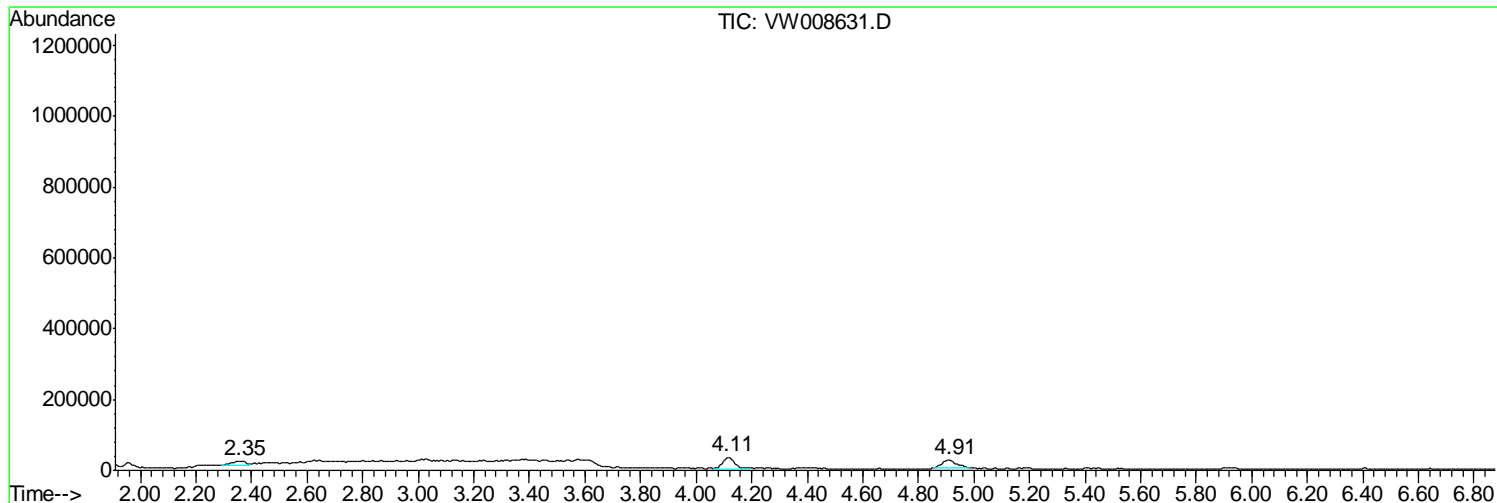
Sum of corrected areas: 21053866

Data Path : Z:\VOASRV\HPCHEM1\MSVOA W\DATA\VW021219\
 Data File : VW008631.D
 Acq On : 12 Feb 2019 18:59
 Operator : SY/VA
 Sample : K1343-15
 Misc : 7.47G/5ML/MSVOA W/SOIL
 ALS Vial : 19 Sample Multiplier: 1

Instrument :
 MSVOA_W
 ClientSampleId :
 JC-02-021119-H

Quant Method : Z:\VOASRV\HPCHEM1\MSVOA_W\METHOD\82W012419S.M
 Quant Title : SW846 8260

TIC Library : C:\DATABASE\NIST11.L
 TIC Integration Parameters: LSCINT.P



Data Path : Z:\VOASRV\HPCHEM1\MSVOA W\DATA\VW021219\
 Data File : VW008631.D
 Acq On : 12 Feb 2019 18:59
 Operator : SY/VA
 Sample : K1343-15
 Misc : 7.47G/5ML/MSVOA W/SOIL
 ALS Vial : 19 Sample Multiplier: 1

Instrument :
 MSVOA_W
 ClientSampled :
 JC-02-021119-H

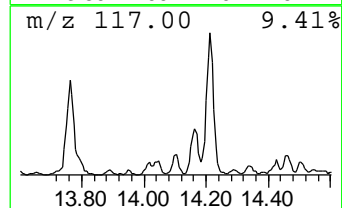
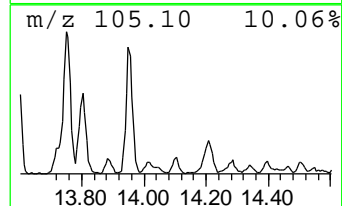
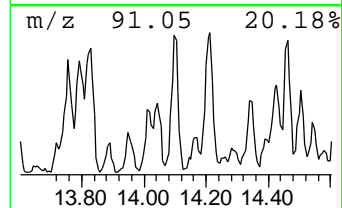
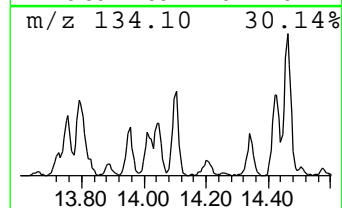
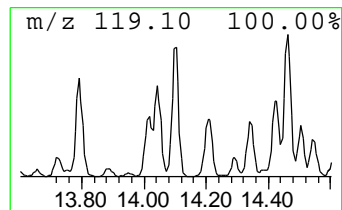
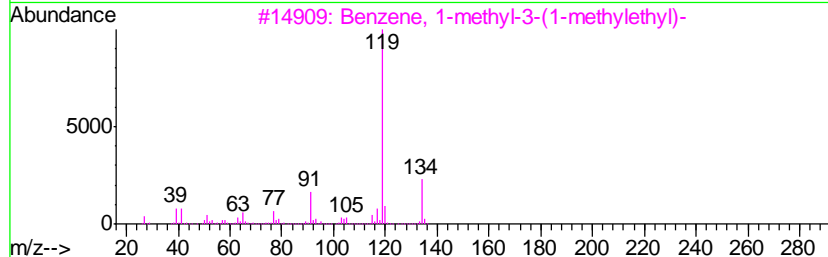
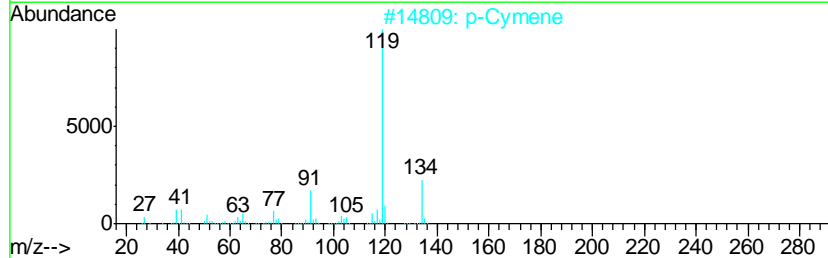
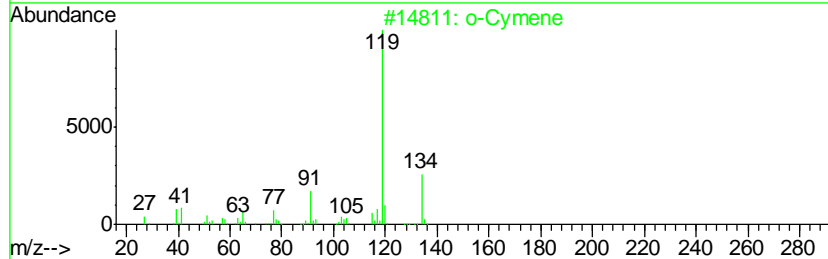
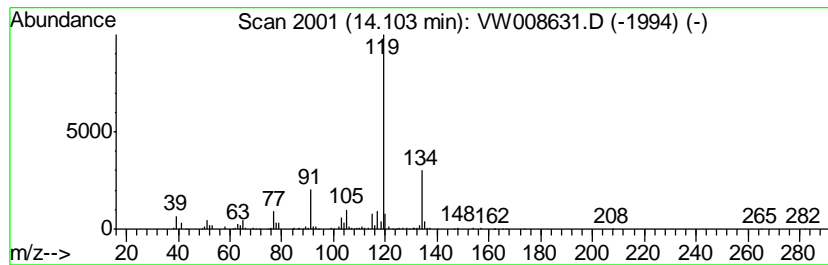
Quant Method : Z:\VOASRV\HPCHEM1\MSVOA_W\METHOD\82W012419S.M
 Quant Title : SW846 8260

TIC Library : C:\DATABASE\NIST11.L
 TIC Integration Parameters: LSCINT.P

 Peak Number 1 o-Cymene Concentration Rank 7

R.T.	EstConc	Area	Relative to ISTD	R.T.
14.10	7.57 ug/l	276739	1,4-Dichlorobenzene-d4	13.56

Hit#	of	Tentative ID	MW	MolForm	CAS#	Qual
1	5	o-Cymene	134	C10H14	000527-84-4	95
2		p-Cymene	134	C10H14	000099-87-6	95
3		Benzene, 1-methyl-3-(1-methyleth...	134	C10H14	000535-77-3	94
4		Benzene, 2-ethyl-1,3-dimethyl-	134	C10H14	002870-04-4	93
5		Benzene, 1,2,4,5-tetramethyl-	134	C10H14	000095-93-2	91



Data Path : Z:\VOASRV\HPCHEM1\MSVOA W\DATA\VW021219\
 Data File : VW008631.D
 Acq On : 12 Feb 2019 18:59
 Operator : SY/VA
 Sample : K1343-15
 Misc : 7.47G/5ML/MSVOA W/SOIL
 ALS Vial : 19 Sample Multiplier: 1

Instrument :
 MSVOA_W
 ClientSampleId :
 JC-02-021119-H

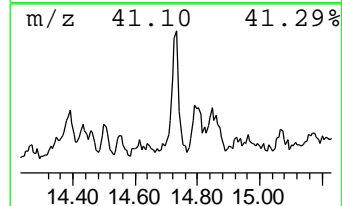
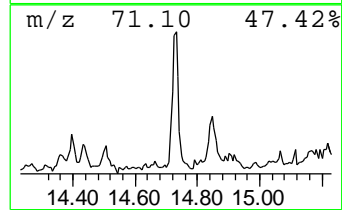
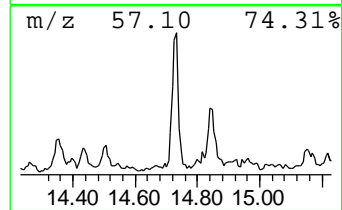
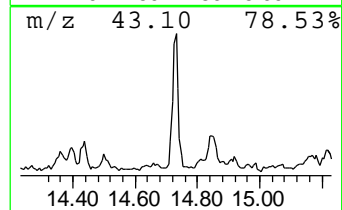
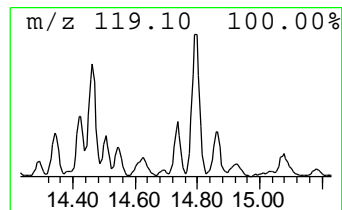
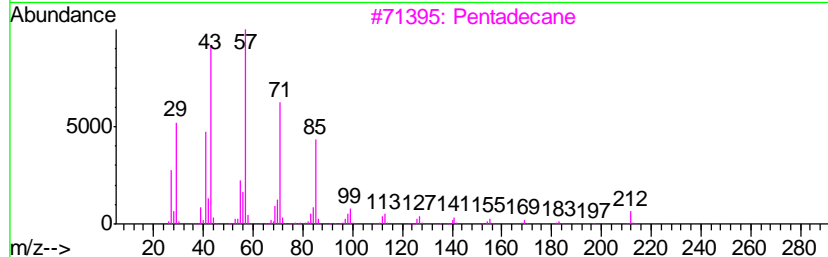
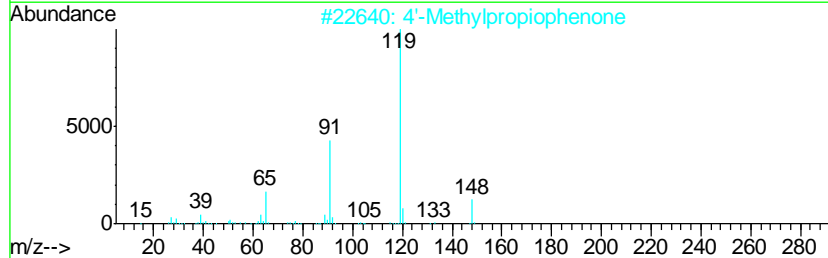
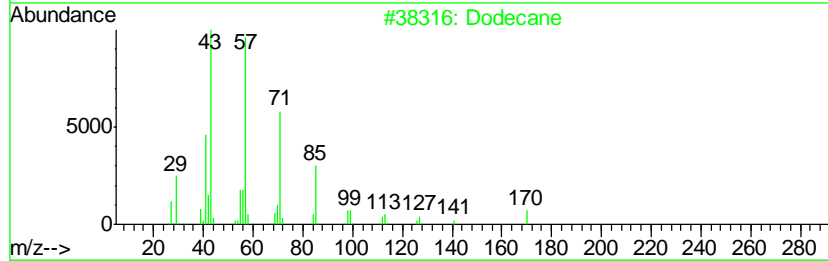
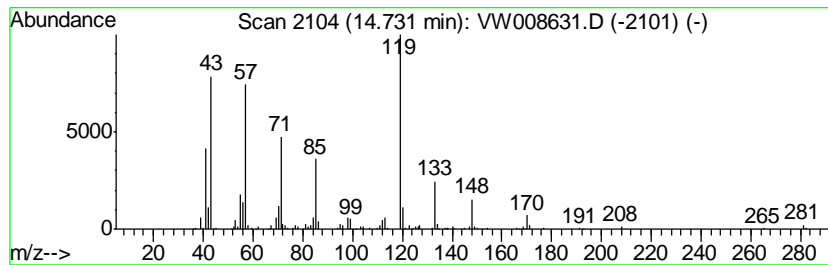
Quant Method : Z:\VOASRV\HPCHEM1\MSVOA_W\METHOD\82W012419S.M
 Quant Title : SW846 8260

TIC Library : C:\DATABASE\NIST11.L
 TIC Integration Parameters: LSCINT.P

 Peak Number 2 Dodecane Concentration Rank 9

R.T.	EstConc	Area	Relative to ISTD	R.T.
14.73	6.91 ug/l	252531	1,4-Dichlorobenzene-d4	13.56

Hit#	of	Tentative ID	MW	MolForm	CAS#	Qual
1	5	Dodecane	170	C12H26	000112-40-3	55
2		4'-Methylpropiophenone	148	C10H12O	005337-93-9	35
3		Pentadecane	212	C15H32	000629-62-9	25
4		Eicosane	282	C20H42	000112-95-8	25
5		Tetradecane	198	C14H30	000629-59-4	25



Data Path : Z:\VOASRV\HPCHEM1\MSVOA W\DATA\VW021219\
 Data File : VW008631.D
 Acq On : 12 Feb 2019 18:59
 Operator : SY/VA
 Sample : K1343-15
 Misc : 7.47G/5ML/MSVOA W/SOIL
 ALS Vial : 19 Sample Multiplier: 1

Instrument :
 MSVOA_W
 ClientSampled :
 JC-02-021119-H

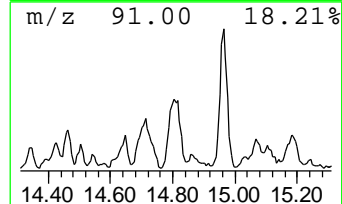
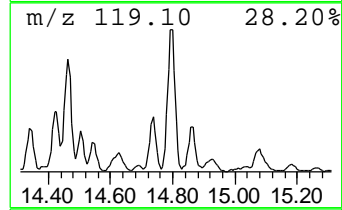
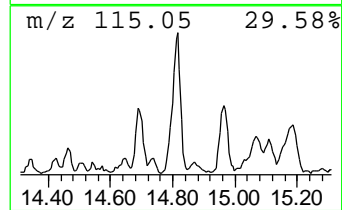
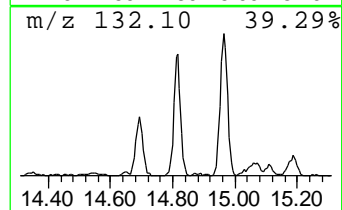
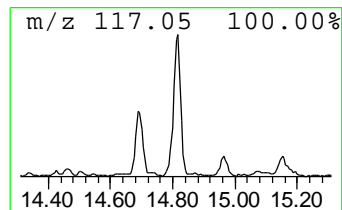
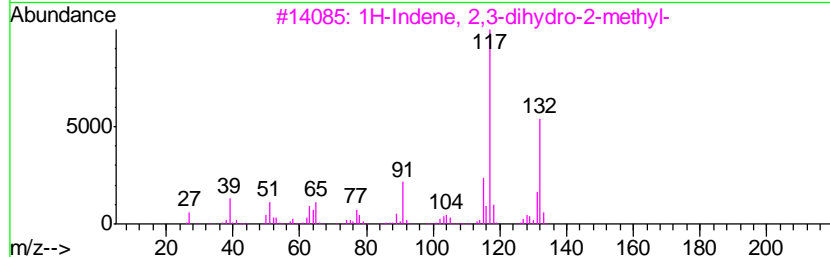
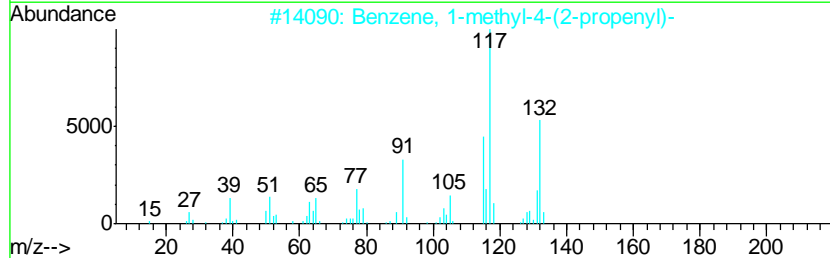
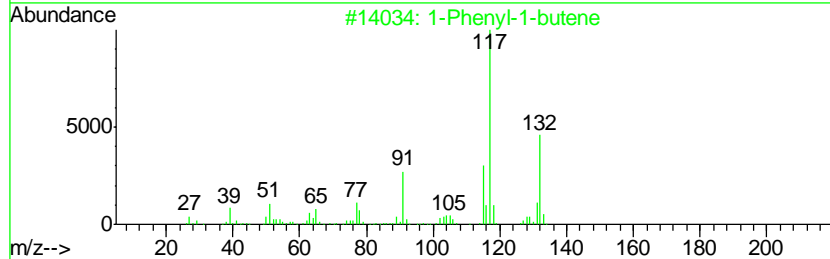
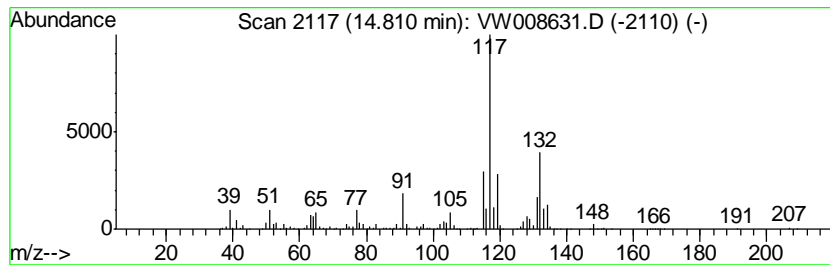
Quant Method : Z:\VOASRV\HPCHEM1\MSVOA_W\METHOD\82W012419S.M
 Quant Title : SW846 8260

TIC Library : C:\DATABASE\NIST11.L
 TIC Integration Parameters: LSCINT.P

 Peak Number 3 1-Phenyl-1-butene Concentration Rank 1

R.T.	EstConc	Area	Relative to ISTD	R.T.
14.81	21.96 ug/l	802380	1,4-Dichlorobenzene-d4	13.56

Hit#	of	Tentative ID	MW	MolForm	CAS#	Qual
1	5	1-Phenyl-1-butene	132	C10H12	000824-90-8	95
2		Benzene, 1-methyl-4-(2-propenyl)-	132	C10H12	003333-13-9	91
3		1H-Indene, 2,3-dihydro-2-methyl-	132	C10H12	000824-63-5	81
4		Benzene, 2-butenyl-	132	C10H12	001560-06-1	81
5		Benzene, 1-ethenyl-4-ethyl-	132	C10H12	003454-07-7	81



Data Path : Z:\VOASRV\HPCHEM1\MSVOA W\DATA\VW021219\
 Data File : VW008631.D
 Acq On : 12 Feb 2019 18:59
 Operator : SY/VA
 Sample : K1343-15
 Misc : 7.47G/5ML/MSVOA W/SOIL
 ALS Vial : 19 Sample Multiplier: 1

Instrument :
 MSVOA_W
 ClientSampled :
 JC-02-021119-H

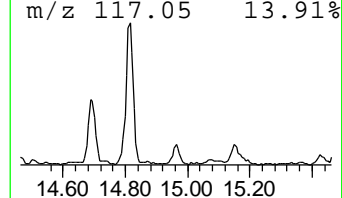
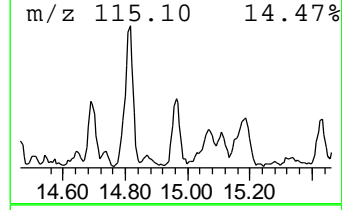
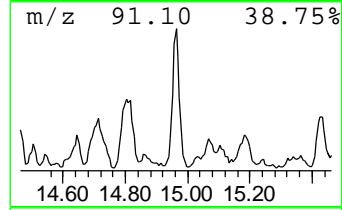
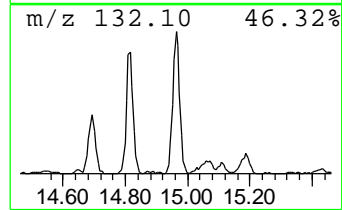
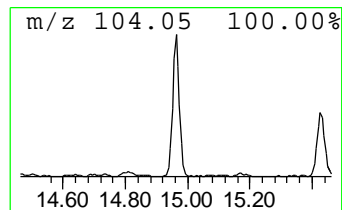
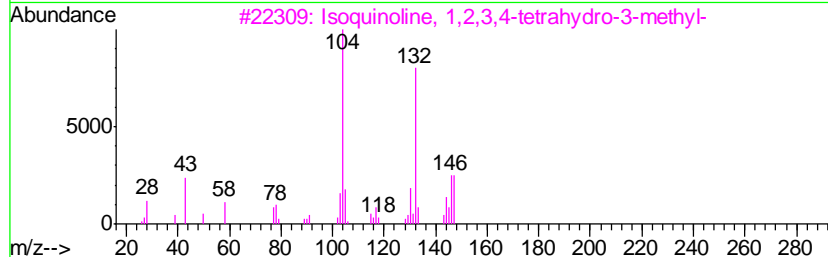
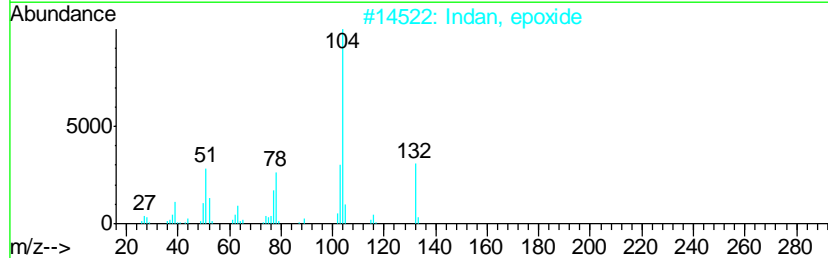
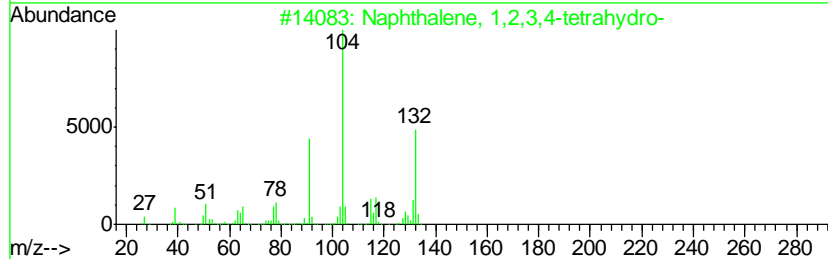
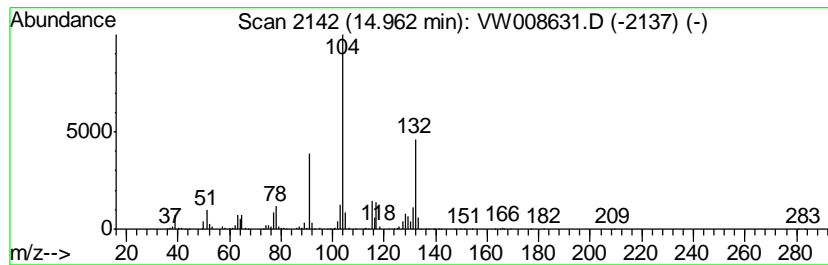
Quant Method : Z:\VOASRV\HPCHEM1\MSVOA_W\METHOD\82W012419S.M
 Quant Title : SW846 8260

TIC Library : C:\DATABASE\NIST11.L
 TIC Integration Parameters: LSCINT.P

 Peak Number 4 Naphthalene, 1,2,3,4-tetra... Concentration Rank 3

R.T.	EstConc	Area	Relative to ISTD	R.T.
14.96	12.23 ug/l	446767	1,4-Dichlorobenzene-d4	13.56

Hit#	of	Tentative ID	MW	MolForm	CAS#	Qual
1	5	Naphthalene, 1,2,3,4-tetrahydro-	132	C10H12	000119-64-2	97
2		Indan, epoxide	132	C9H8O	000768-22-9	58
3		Isoquinoline, 1,2,3,4-tetrahydro...	147	C10H13N	029726-60-1	50
4		Benzene, 3-cyclohexen-1-yl-	158	C12H14	004994-16-5	47
5		Benzene, cyclobutyl-	132	C10H12	004392-30-7	43



Data Path : Z:\VOASRV\HPCHEM1\MSVOA W\DATA\VW021219\
 Data File : VW008631.D
 Acq On : 12 Feb 2019 18:59
 Operator : SY/VA
 Sample : K1343-15
 Misc : 7.47G/5ML/MSVOA W/SOIL
 ALS Vial : 19 Sample Multiplier: 1

Instrument :
 MSVOA_W
 ClientSampleID :
 JC-02-021119-H

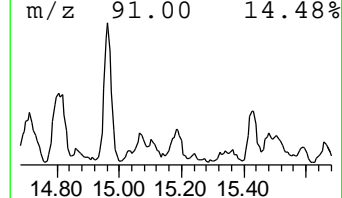
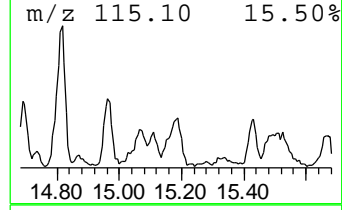
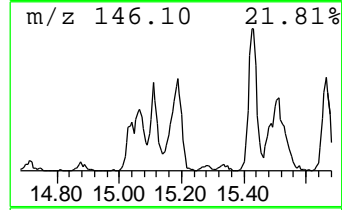
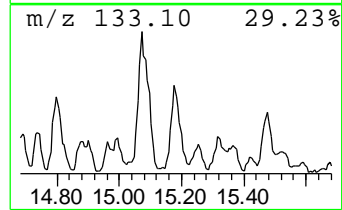
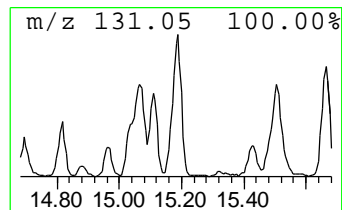
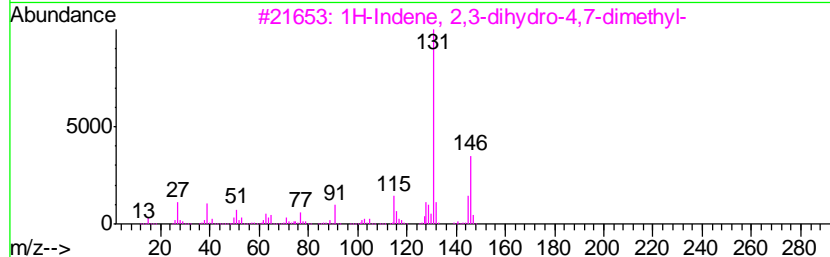
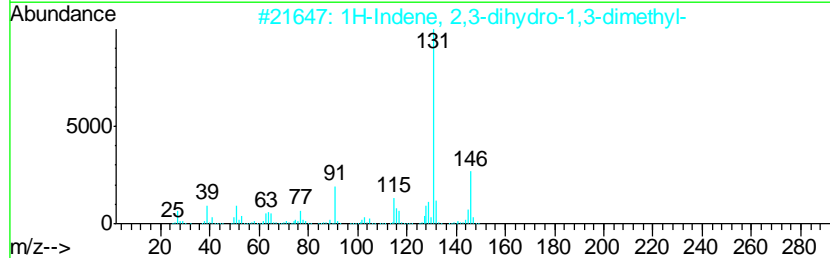
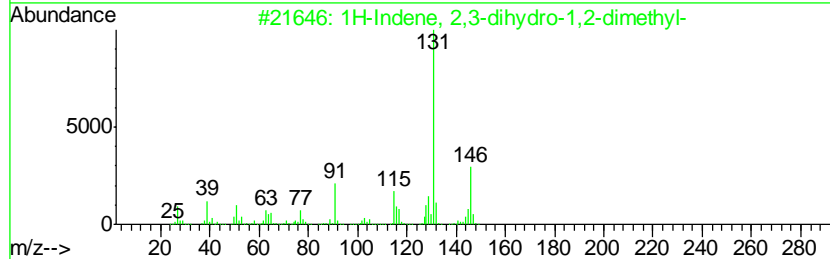
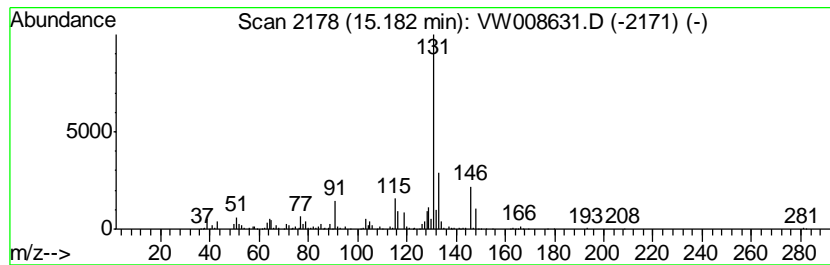
Quant Method : Z:\VOASRV\HPCHEM1\MSVOA_W\METHOD\82W012419S.M
 Quant Title : SW846 8260

TIC Library : C:\DATABASE\NIST11.L
 TIC Integration Parameters: LSCINT.P

 Peak Number 5 1H-Indene, 2,3-dihydro-1,2-... Concentration Rank 5

R.T.	EstConc	Area	Relative to ISTD	R.T.
15.18	8.75 ug/l	319666	1,4-Dichlorobenzene-d4	13.56

Hit#	of	Tentative ID	MW	MolForm	CAS#	Qual
1	5	1H-Indene, 2,3-dihydro-1,2-dimet...	146	C11H14	017057-82-8	81
2		1H-Indene, 2,3-dihydro-1,3-dimet...	146	C11H14	004175-53-5	81
3		1H-Indene, 2,3-dihydro-4,7-dimet...	146	C11H14	006682-71-9	81
4		2,2-Dimethylindene, 2,3-dihydro-	146	C11H14	020836-11-7	81
5		1H-Indene, 2,3-dihydro-1,6-dimet...	146	C11H14	017059-48-2	81



Data Path : Z:\VOASRV\HPCHEM1\MSVOA W\DATA\VW021219\
 Data File : VW008631.D
 Acq On : 12 Feb 2019 18:59
 Operator : SY/VA
 Sample : K1343-15
 Misc : 7.47G/5ML/MSVOA W/SOIL
 ALS Vial : 19 Sample Multiplier: 1

Instrument :
 MSVOA_W
 ClientSampled :
 JC-02-021119-H

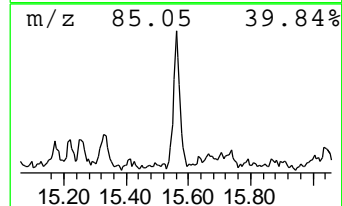
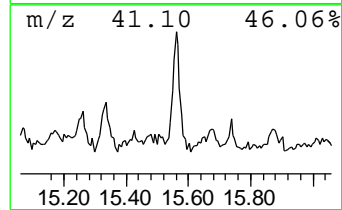
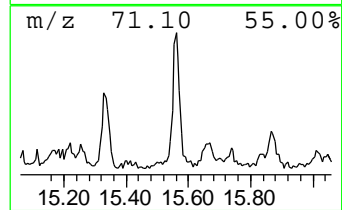
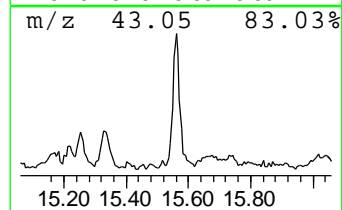
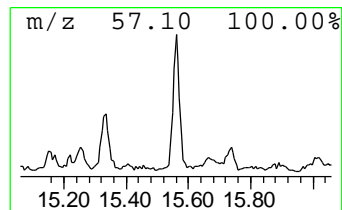
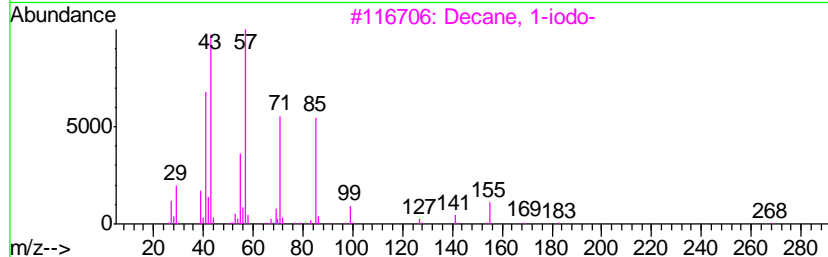
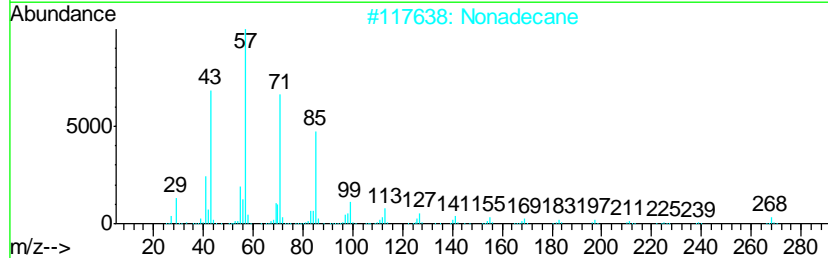
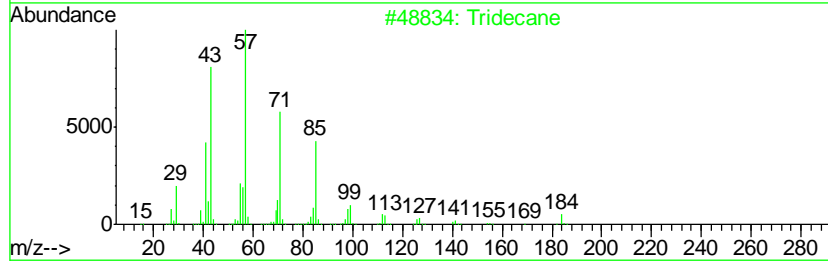
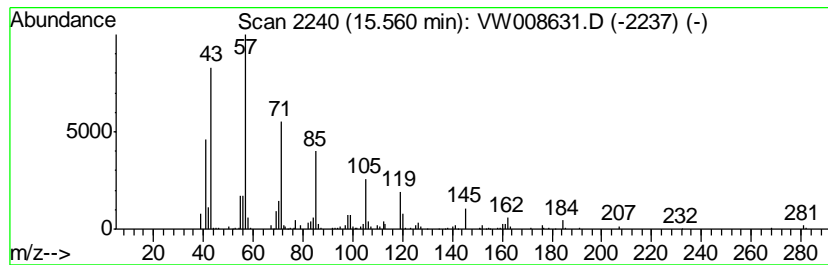
Quant Method : Z:\VOASRV\HPCHEM1\MSVOA_W\METHOD\82W012419S.M
 Quant Title : SW846 8260

TIC Library : C:\DATABASE\NIST11.L
 TIC Integration Parameters: LSCINT.P

 Peak Number 6 Tridecane Concentration Rank 10

R.T.	EstConc	Area	Relative to ISTD	R.T.
15.56	6.87 ug/l	251171	1,4-Dichlorobenzene-d4	13.56

Hit#	of	Tentative ID	MW	MolForm	CAS#	Qual
1	5	Tridecane	184	C13H28	000629-50-5	91
2		Nonadecane	268	C19H40	000629-92-5	53
3		Decane, 1-iodo-	268	C10H21I	002050-77-3	53
4		1-Iodoundecane	282	C11H23I	004282-44-4	49
5		Undecane, 5-methyl-	170	C12H26	001632-70-8	47



Data Path : Z:\VOASRV\HPCHEM1\MSVOA W\DATA\VW021219\
 Data File : VW008631.D
 Acq On : 12 Feb 2019 18:59
 Operator : SY/VA
 Sample : K1343-15
 Misc : 7.47G/5ML/MSVOA W/SOIL
 ALS Vial : 19 Sample Multiplier: 1

Instrument :
 MSVOA_W
 ClientSampleID :
 JC-02-021119-H

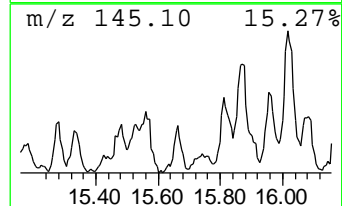
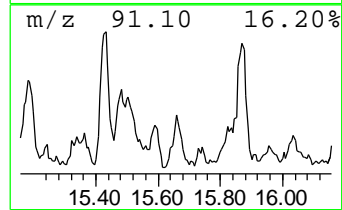
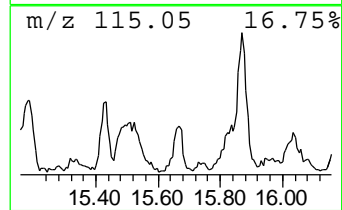
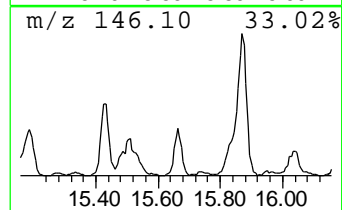
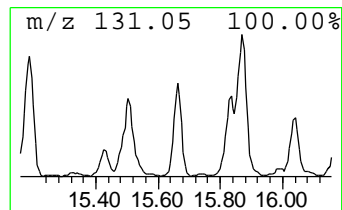
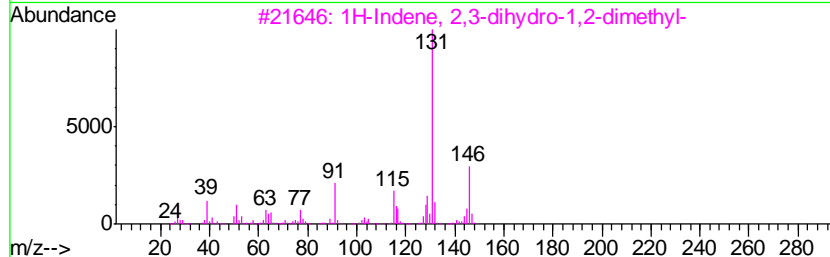
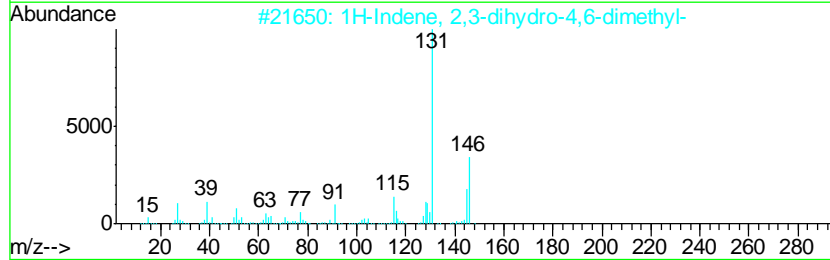
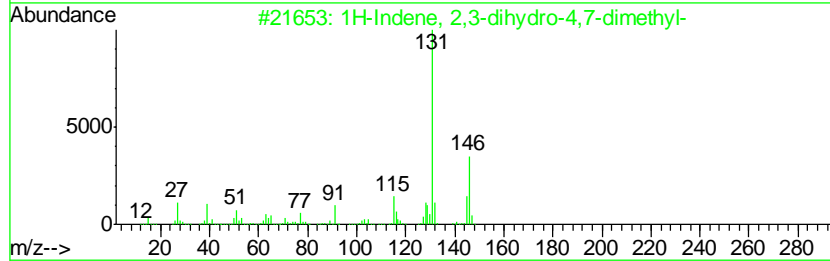
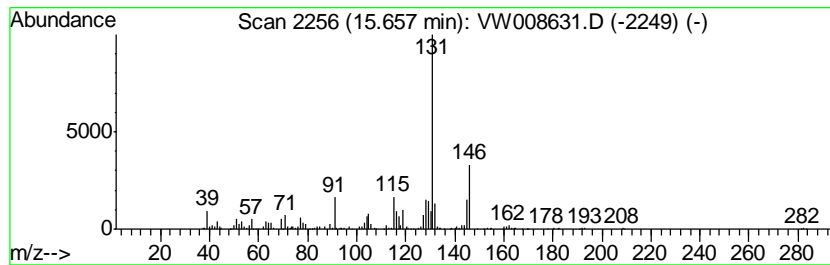
Quant Method : Z:\VOASRV\HPCHEM1\MSVOA_W\METHOD\82W012419S.M
 Quant Title : SW846 8260

TIC Library : C:\DATABASE\NIST11.L
 TIC Integration Parameters: LSCINT.P

 Peak Number 7 1H-Indene, 2,3-dihydro-4,7-... Concentration Rank 6

R.T.	EstConc	Area	Relative to ISTD	R.T.
15.66	7.67 ug/l	280223	1,4-Dichlorobenzene-d4	13.56

Hit#	of	Tentative ID	MW	MolForm	CAS#	Qual
1	5	1H-Indene, 2,3-dihydro-4,7-dimet...	146	C11H14	006682-71-9	94
2		1H-Indene, 2,3-dihydro-4,6-dimet...	146	C11H14	001685-82-1	94
3		1H-Indene, 2,3-dihydro-1,2-dimet...	146	C11H14	017057-82-8	94
4		1H-Indene, 2,3-dihydro-1,6-dimet...	146	C11H14	017059-48-2	91
5		Benzene, (3-methyl-2-butenyl)-	146	C11H14	004489-84-3	91



Data Path : Z:\VOASRV\HPCHEM1\MSVOA W\DATA\VW021219\
 Data File : VW008631.D
 Acq On : 12 Feb 2019 18:59
 Operator : SY/VA
 Sample : K1343-15
 Misc : 7.47G/5ML/MSVOA W/SOIL
 ALS Vial : 19 Sample Multiplier: 1

Instrument :
 MSVOA_W
 ClientSampleID :
 JC-02-021119-H

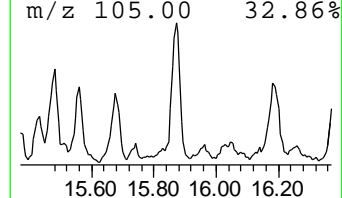
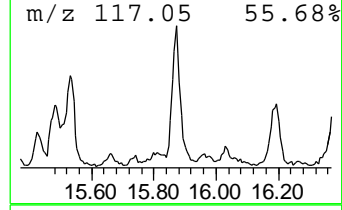
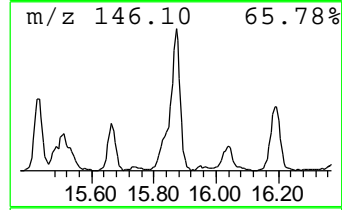
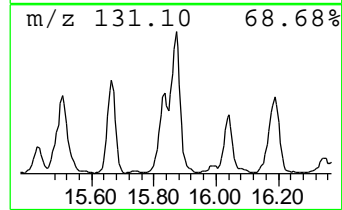
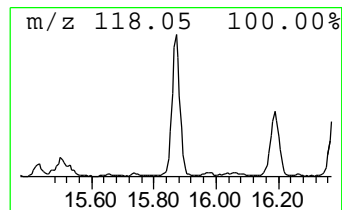
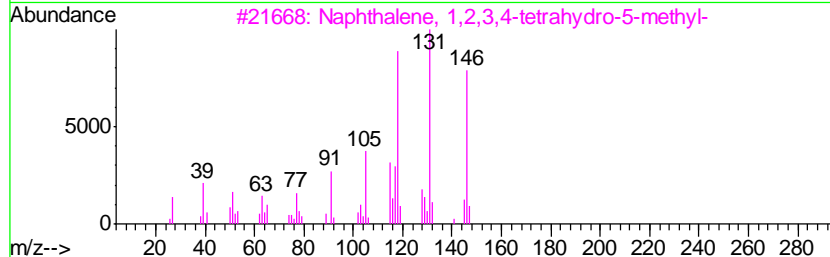
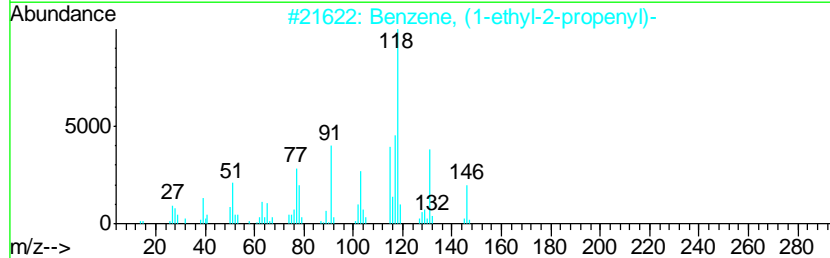
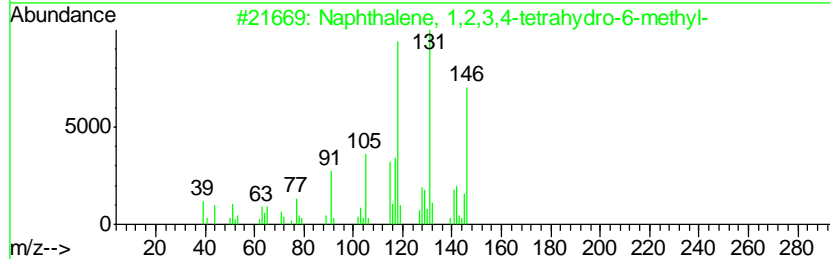
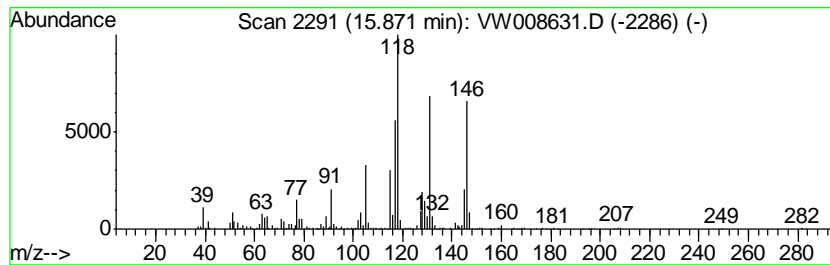
Quant Method : Z:\VOASRV\HPCHEM1\MSVOA_W\METHOD\82W012419S.M
 Quant Title : SW846 8260

TIC Library : C:\DATABASE\NIST11.L
 TIC Integration Parameters: LSCINT.P

 Peak Number 8 Naphthalene, 1,2,3,4-tetrahydro... Concentration Rank 2

R.T.	EstConc	Area	Relative to ISTD	R.T.
15.87	15.26 ug/l	557640	1,4-Dichlorobenzene-d4	13.56

Hit#	of	Tentative ID	MW	MolForm	CAS#	Qual
1	5	Naphthalene, 1,2,3,4-tetrahydro-...	146	C11H14	001680-51-9	76
2		Benzene, (1-ethyl-2-propenyl)-	146	C11H14	019947-22-9	72
3		Naphthalene, 1,2,3,4-tetrahydro-...	146	C11H14	002809-64-5	64
4		2-Propyn-1-ol, 3-(4-methylphenyl)-	146	C10H10O	016017-24-6	64
5		Benzene, 2-ethenyl-1,3,5-trimethyl-	146	C11H14	000769-25-5	38



Data Path : Z:\VOASRV\HPCHEM1\MSVOA W\DATA\VW021219\
 Data File : VW008631.D
 Acq On : 12 Feb 2019 18:59
 Operator : SY/VA
 Sample : K1343-15
 Misc : 7.47G/5ML/MSVOA W/SOIL
 ALS Vial : 19 Sample Multiplier: 1

Instrument :
 MSVOA_W
 ClientSampleID :
 JC-02-021119-H

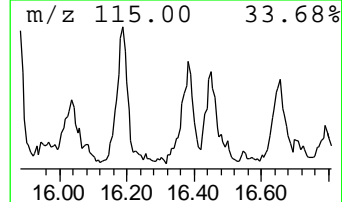
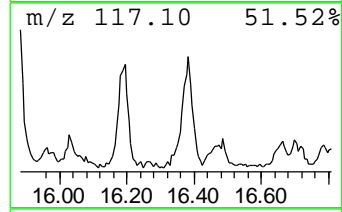
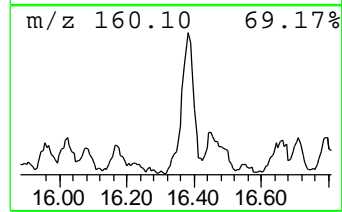
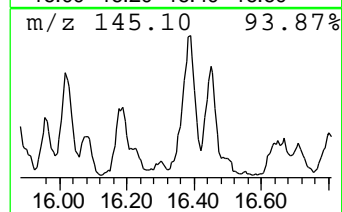
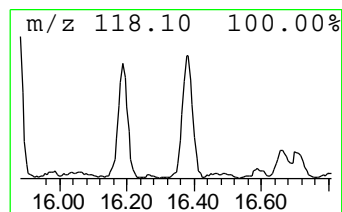
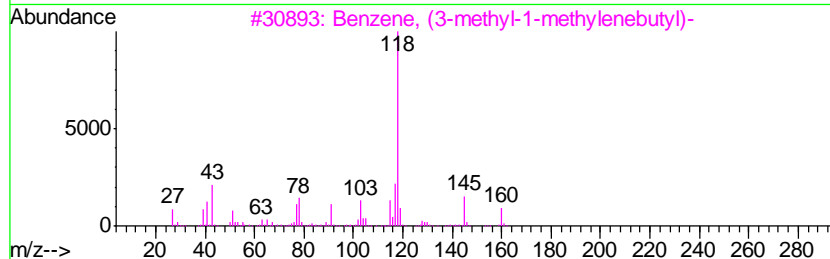
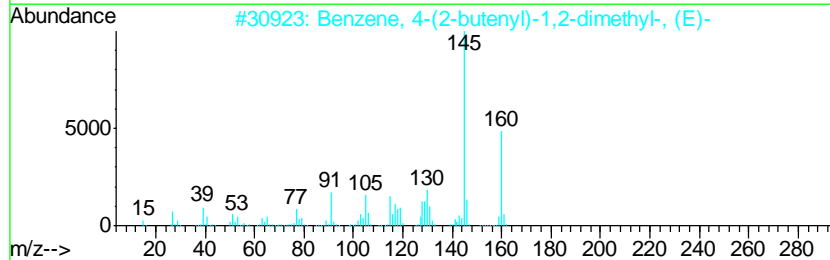
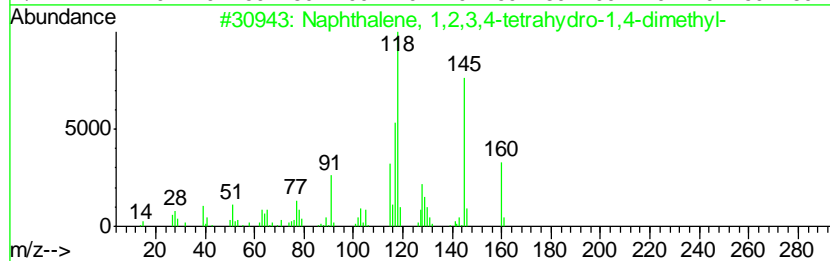
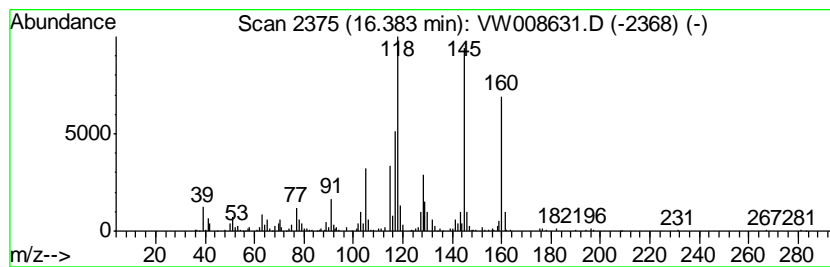
Quant Method : Z:\VOASRV\HPCHEM1\MSVOA_W\METHOD\82W012419S.M
 Quant Title : SW846 8260

TIC Library : C:\DATABASE\NIST11.L
 TIC Integration Parameters: LSCINT.P

 Peak Number 10 Naphthalene, 1,2,3,4-tetra... Concentration Rank 8

R.T.	EstConc	Area	Relative to ISTD	R.T.
16.38	7.19 ug/l	262808	1,4-Dichlorobenzene-d4	13.56

Hit#	of	Tentative ID	MW	MolForm	CAS#	Qual
1	5	Naphthalene, 1,2,3,4-tetrahydro-...	160	C12H16	004175-54-6	94
2		Benzene, 4-(2-butenyl)-1,2-dimet...	160	C12H16	054340-86-2	70
3		Benzene, (3-methyl-1-methylenebu...	160	C12H16	038212-14-5	64
4		Naphthalene, 1,2,3,4-tetrahydro-...	160	C12H16	013065-07-1	64
5		Benzene, 1-(1-methylethenyl)-3-(...	160	C12H16	001129-29-9	64



Data Path : Z:\VOASRV\HPCHEM1\MSVOA_W\DATA\VW021219\
Data File : VW008631.D
Acq On : 12 Feb 2019 18:59
Operator : SY/VA
Sample : K1343-15
Misc : 7.47G/5ML/MSVOA_W/SOIL
ALS Vial : 19 Sample Multiplier: 1

Instrument :
MSVOA_W
ClientSampleId :
JC-02-021119-H

Quant Method : Z:\VOASRV\HPCHEM1\MSVOA_W\METHOD\82W012419S.M
Quant Title : SW846 8260

TIC Library : C:\DATABASE\NIST11.L
TIC Integration Parameters: LSCINT.P

TIC Top Hit name	RT	EstConc	Units	Response	--Internal Standard--			
					#	RT	Resp	Conc
o-Cymene	14.10	7.6	ug/l	276739	4	13.56	1826980	50.0
Dodecane	14.73	6.9	ug/l	252531	4	13.56	1826980	50.0
1-Phenyl-1-butene	14.81	22.0	ug/l	802380	4	13.56	1826980	50.0
Naphthalene, 1,2,...	14.96	12.2	ug/l	446767	4	13.56	1826980	50.0
1H-Indene, 2,3-di...	15.18	8.8	ug/l	319666	4	13.56	1826980	50.0
Tridecane	15.56	6.9	ug/l	251171	4	13.56	1826980	50.0
1H-Indene, 2,3-di...	15.66	7.7	ug/l	280223	4	13.56	1826980	50.0
Naphthalene, 1,2,...	15.87	15.3	ug/l	557640	4	13.56	1826980	50.0
Naphthalene, 1,2,...	16.38	7.2	ug/l	262808	4	13.56	1826980	50.0