

Data Path : Z:\VOASRV\HPCHEM1\MSVOA W\DATA\VW021319\
 Data File : VW008652.D
 Acq On : 13 Feb 2019 21:31
 Operator : SY/VA
 Sample : K1343-31RE
 Misc : 5.82G/5ML/MSVOA W/SOIL
 ALS Vial : 19 Sample Multiplier: 1

Instrument :
 MSVOA_W
 ClientSampled :
 TP-1-S

Quant Time: Feb 14 04:46:21 2019
 Quant Method : Z:\VOASRV\HPCHEM1\MSVOA_W\METHOD\82W021319S.M
 Quant Title : SW846 8260
 QLast Update : Thu Feb 14 04:06:50 2019
 Response via : Initial Calibration

Internal Standards	R.T.	QIon	Response	Conc	Units	Dev(Min)
1) Pentafluorobenzene	7.95	168	424275	50.00	ug/l	0.00
34) 1,4-Difluorobenzene	8.84	114	642439	50.00	ug/l	0.00
63) Chlorobenzene-d5	11.63	117	558540	50.00	ug/l	0.00
72) 1,4-Dichlorobenzene-d4	13.56	152	275046	50.00	ug/l	0.00

System Monitoring Compounds

33) 1,2-Dichloroethane-d4	8.30	65	222856	50.52	ug/l	0.00
Spiked Amount				50.000		
			Recovery	=	101.04%	
35) Dibromofluoromethane	7.88	113	198975	49.88	ug/l	0.00
Spiked Amount				50.000		
			Recovery	=	99.76%	
50) Toluene-d8	10.32	98	756050	49.17	ug/l	0.00
Spiked Amount				50.000		
			Recovery	=	98.34%	
62) 4-Bromofluorobenzene	12.62	95	265896	45.91	ug/l	0.00
Spiked Amount				50.000		
			Recovery	=	91.82%	

Target Compounds

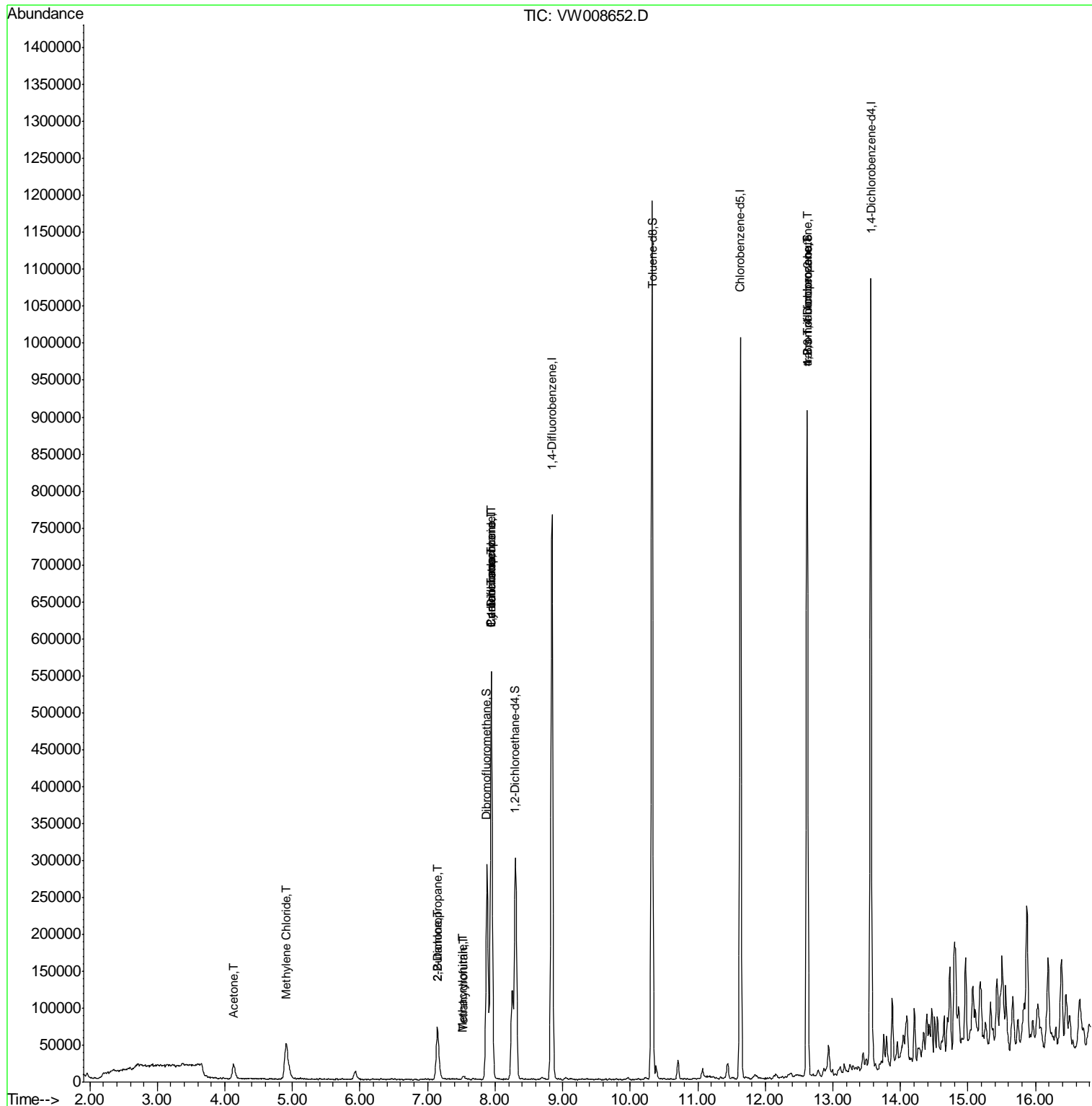
						Qvalue
16) Acetone	4.14	43	39324	39.178	ug/l	98
20) Methylene Chloride	4.90	84	43607	3.070	ug/l	86
25) 2-Butanone	7.15	43	6642	4.686	ug/l #	65
26) 2,2-Dichloropropane	7.14	77	5004	1.002	ug/l #	52
29) Tetrahydrofuran	7.54	42	3071	3.287	ug/l #	86
31) Cyclohexane	7.95	56	9615	1.192	ug/l #	8
36) 1,1-Dichloropropene	7.94	75	31796	4.926	ug/l #	49
38) Carbon Tetrachloride	7.95	117	38800	6.045	ug/l #	17
41) Methacrylonitrile	7.52	41	2148	1.226	ug/l #	28
76) 1,2,3-Trichloropropane	12.62	75	137610	50.668	ug/l #	100
81) trans-1,4-Dichloro-2-buten	12.62	75	137610	108.602	ug/l #	7

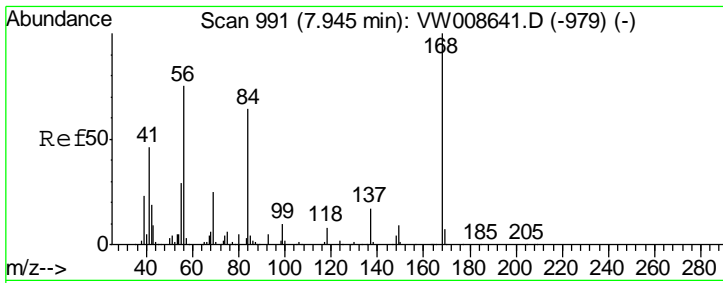
(#) = qualifier out of range (m) = manual integration (+) = signals summed

Data Path : Z:\VOASRV\HPCHEM1\MSVOA W\DATA\VW021319\
 Data File : VW008652.D
 Acq On : 13 Feb 2019 21:31
 Operator : SY/VA
 Sample : K1343-31RE
 Misc : 5.82G/5ML/MSVOA W/SOIL
 ALS Vial : 19 Sample Multiplier: 1

Instrument :
 MSVOA_W
 ClientSampled :
 TP-1-S

Quant Time: Feb 14 04:46:21 2019
 Quant Method : Z:\VOASRV\HPCHEM1\MSVOA_W\METHOD\82W021319S.M
 Quant Title : SW846 8260
 QLast Update : Thu Feb 14 04:06:50 2019
 Response via : Initial Calibration

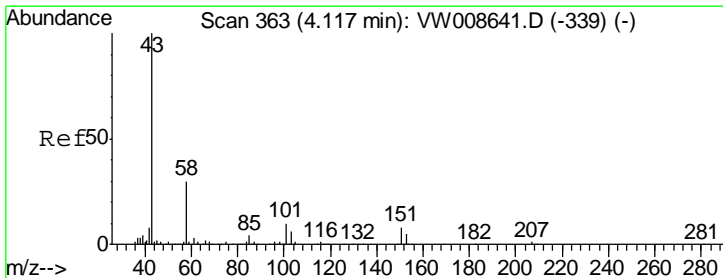
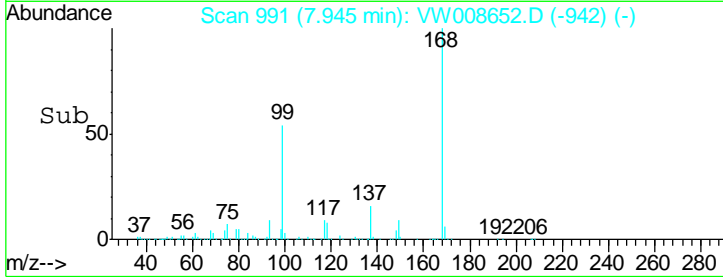
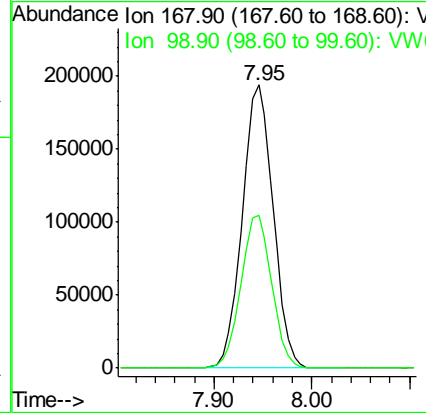
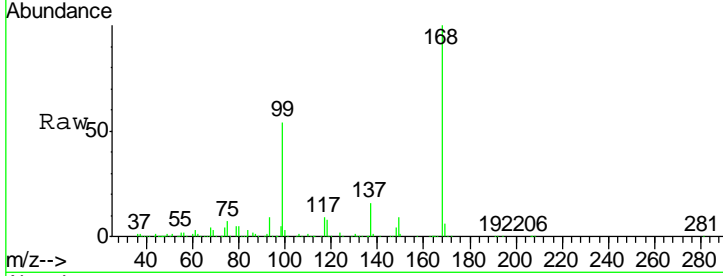




#1
 Pentafluorobenzene
 Concen: 50.000 ug/l
 RT: 7.95 min Scan# 991
 Delta R.T. -0.00 min
 Lab File: VW008652.D
 Acq: 13 Feb 2019 21:31

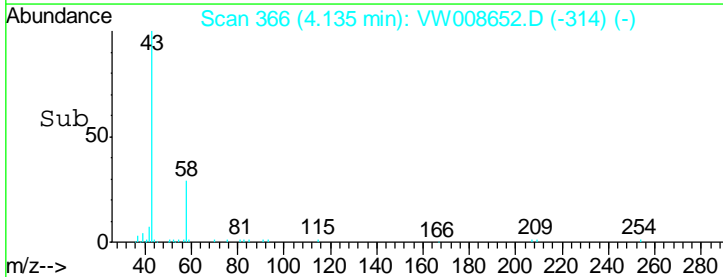
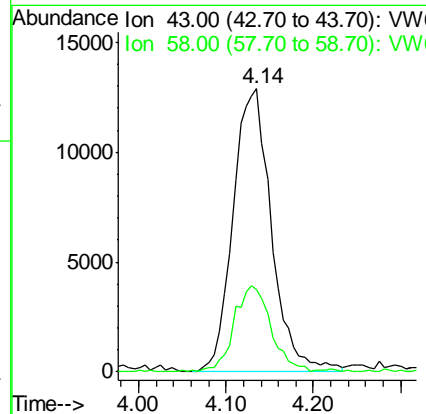
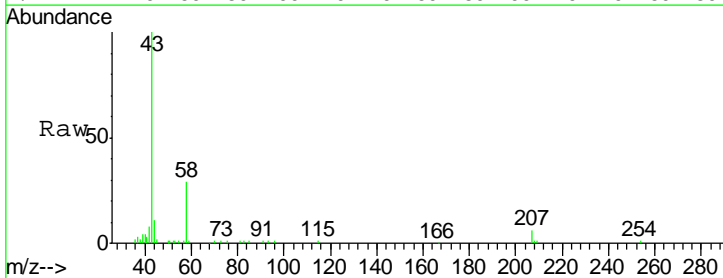
Instrument :
 MSVOA_W
 ClientSampled :
 TP-1-S

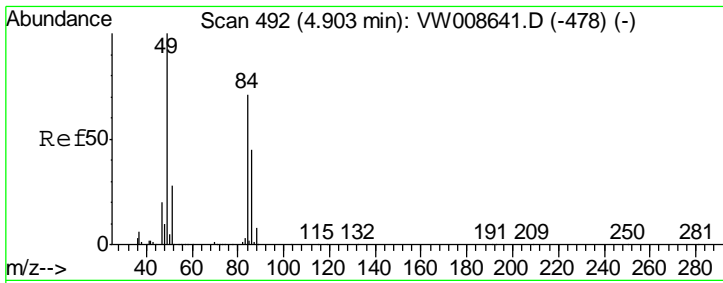
Tgt Ion: 168 Resp: 424275
 Ion Ratio Lower Upper
 168 100
 99 54.0 42.8 64.2



#16
 Acetone
 Concen: 39.178 ug/l
 RT: 4.14 min Scan# 366
 Delta R.T. 0.02 min
 Lab File: VW008652.D
 Acq: 13 Feb 2019 21:31

Tgt Ion: 43 Resp: 39324
 Ion Ratio Lower Upper
 43 100
 58 29.3 24.1 36.1

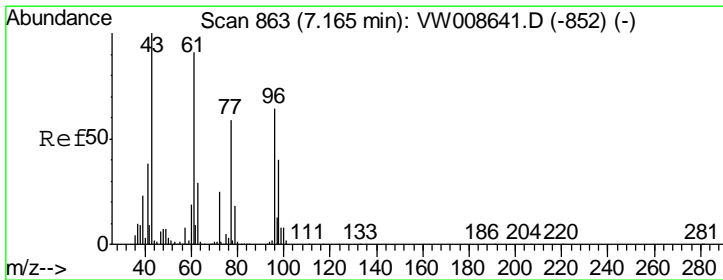
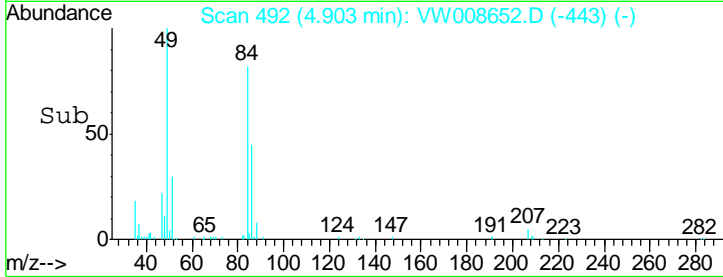
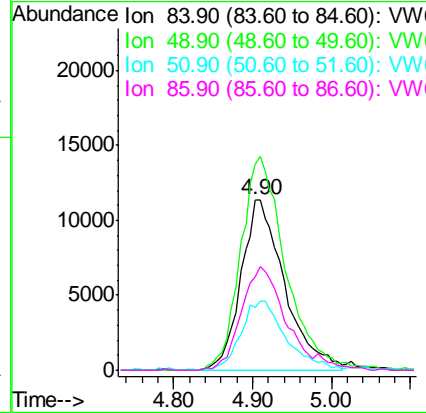
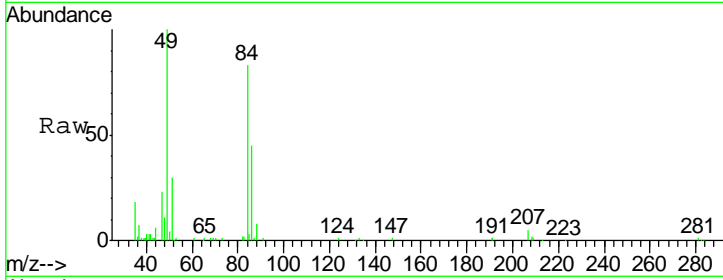




#20
 Methylene Chloride
 Concen: 3.070 ug/l
 RT: 4.90 min Scan# 492
 Delta R.T. 0.00 min
 Lab File: VW008652.D
 Acq: 13 Feb 2019 21:31

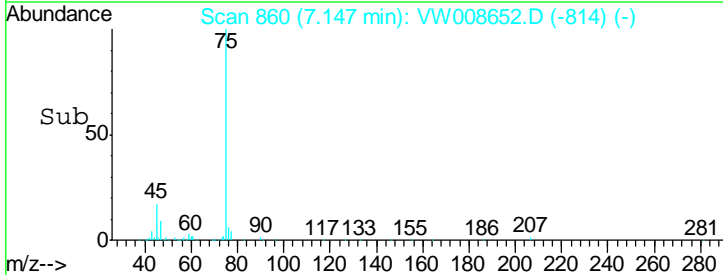
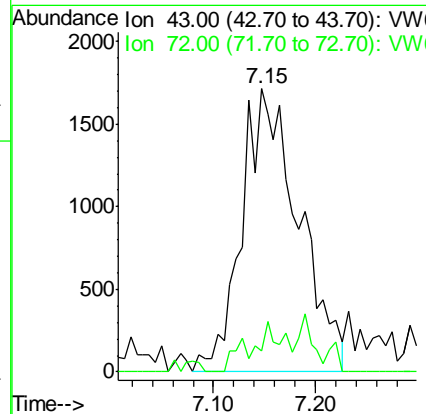
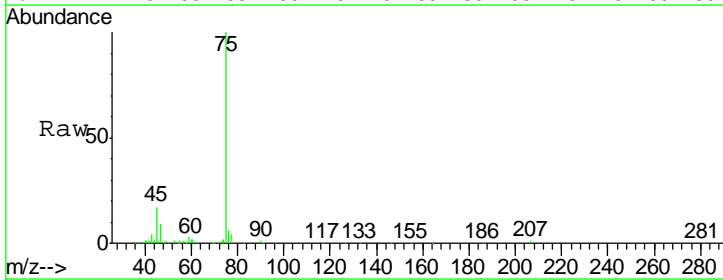
Instrument :
 MSVOA_W
 ClientSampled :
 TP-1-S

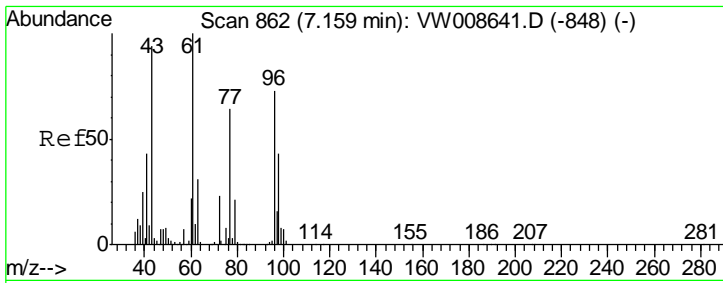
Tgt Ion	Resp	Lower	Upper
84	43607		
49	120.9	113.3	169.9
51	36.2	32.1	48.1
86	54.8	50.9	76.3



#25
 2-Butanone
 Concen: 4.686 ug/l
 RT: 7.15 min Scan# 860
 Delta R.T. -0.02 min
 Lab File: VW008652.D
 Acq: 13 Feb 2019 21:31

Tgt Ion	Resp	Lower	Upper
43	6642		
72	7.4	19.7	29.5#

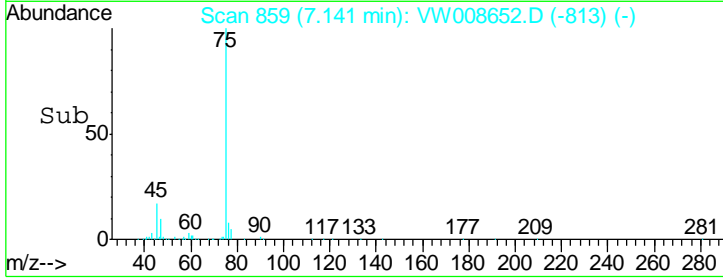
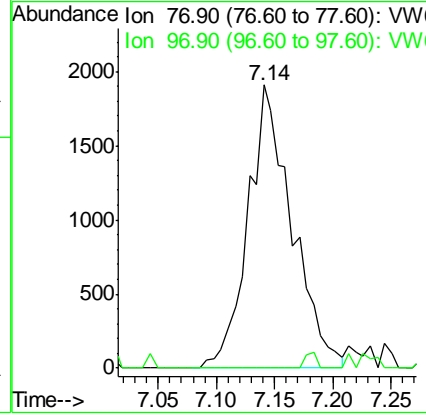
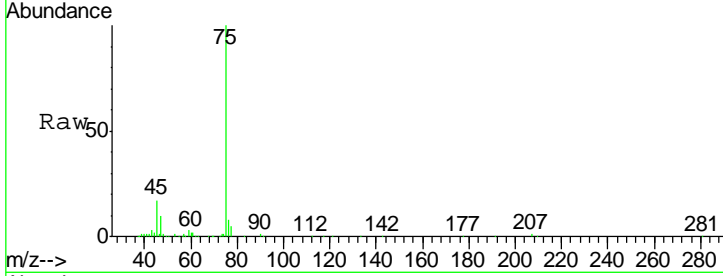




#26
 2,2-Dichloropropane
 Concen: 1.002 ug/l
 RT: 7.14 min Scan# 859
 Delta R.T. -0.02 min
 Lab File: VW008652.D
 Acq: 13 Feb 2019 21:31

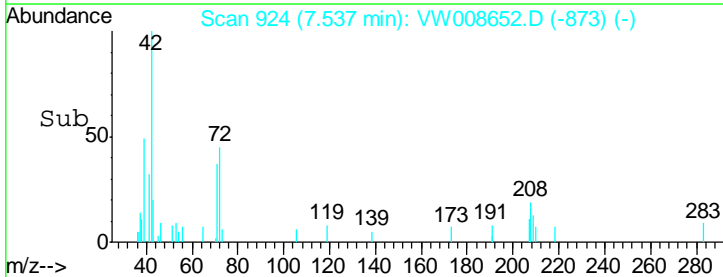
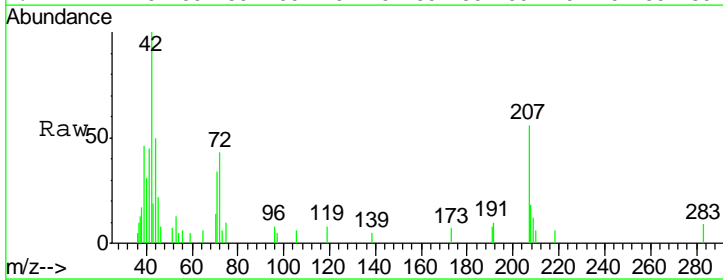
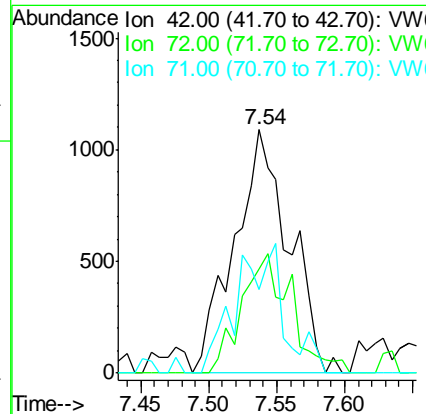
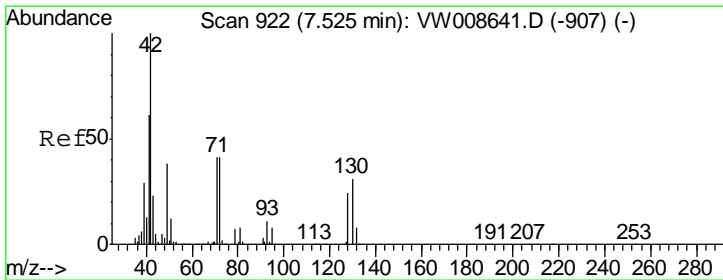
Instrument :
 MSVOA_W
 ClientSampled :
 TP-1-S

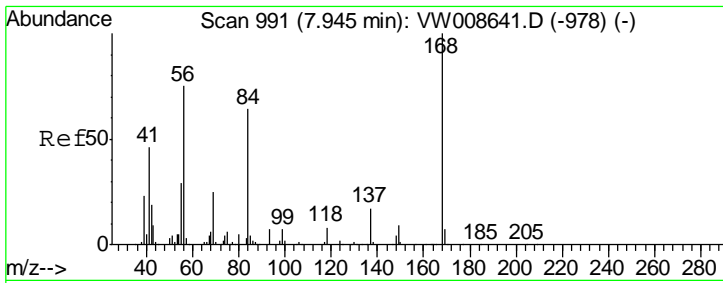
Tgt Ion	Resp	Lower	Upper
77	100		
97	0.0	11.7	35.0#



#29
 Tetrahydrofuran
 Concen: 3.287 ug/l
 RT: 7.54 min Scan# 924
 Delta R.T. 0.01 min
 Lab File: VW008652.D
 Acq: 13 Feb 2019 21:31

Tgt Ion	Resp	Lower	Upper
42	100		
72	44.4	32.2	48.2
71	25.4	31.0	46.6#

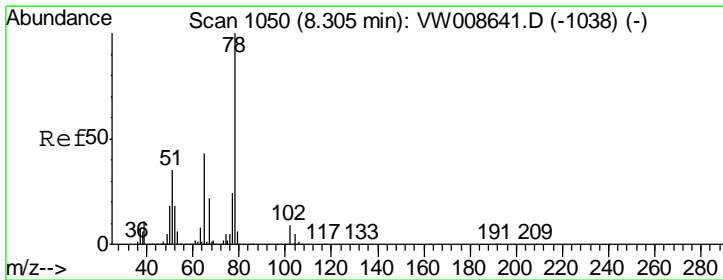
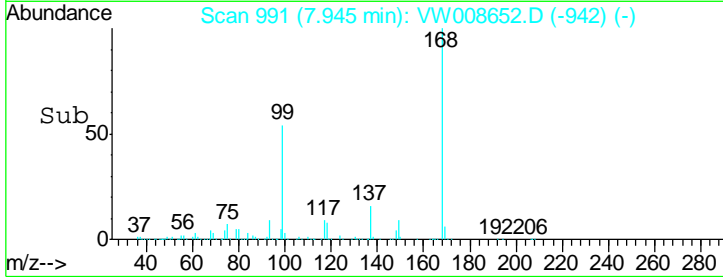
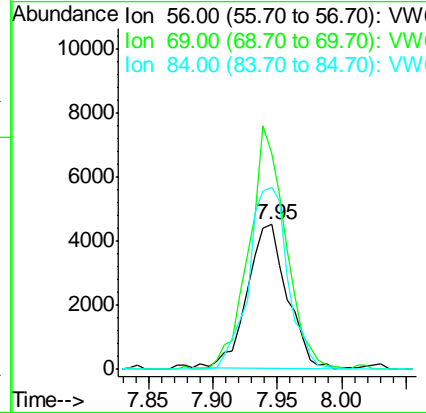
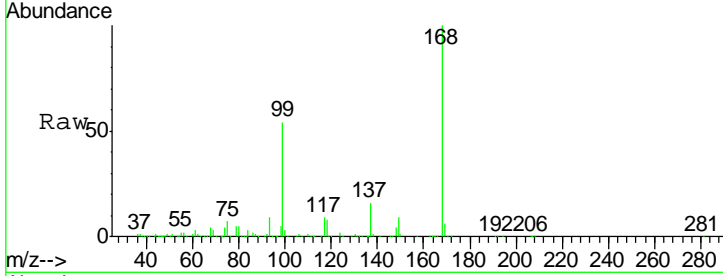




#31
 Cyclohexane
 Concen: 1.192 ug/l
 RT: 7.95 min Scan# 991
 Delta R.T. -0.00 min
 Lab File: VW008652.D
 Acq: 13 Feb 2019 21:31

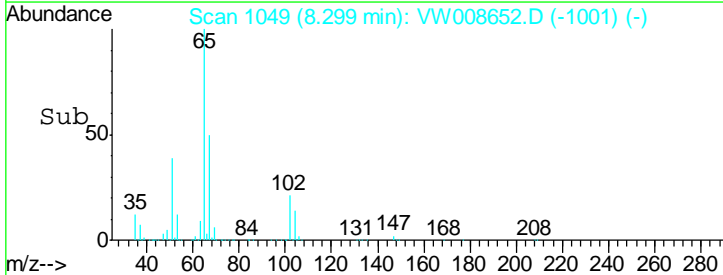
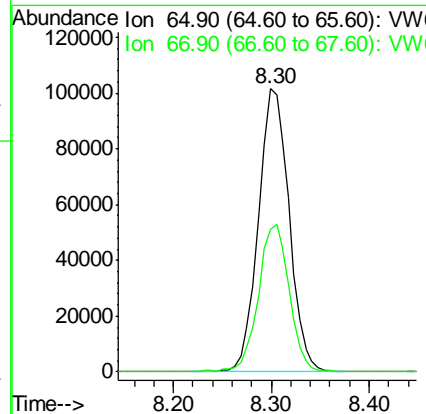
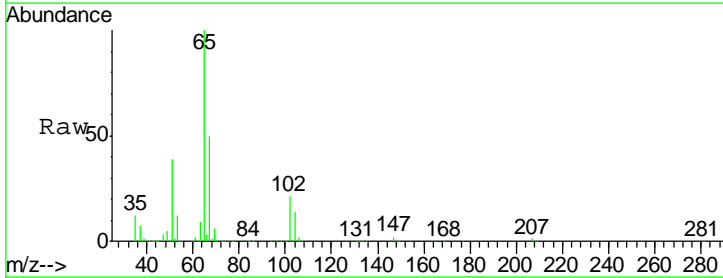
Instrument :
 MSVOA_W
 ClientSampled :
 TP-1-S

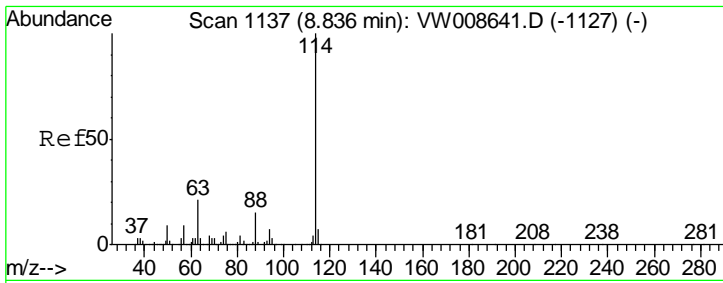
Tgt Ion	Resp	Lower	Upper
56	100		
69	150.3	26.4	39.6#
84	127.4	67.4	101.2#



#33
 1,2-Dichloroethane-d4
 Concen: 50.524 ug/l
 RT: 8.30 min Scan# 1049
 Delta R.T. -0.01 min
 Lab File: VW008652.D
 Acq: 13 Feb 2019 21:31

Tgt Ion	Resp	Lower	Upper
65	100		
67	52.6	0.0	102.0

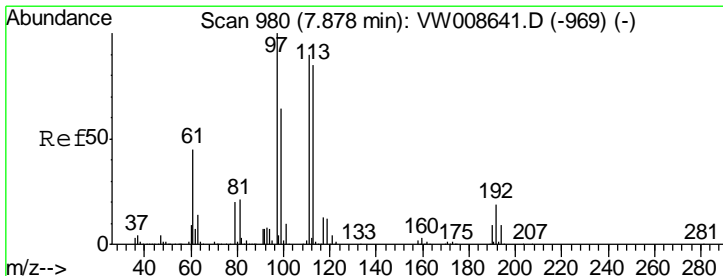
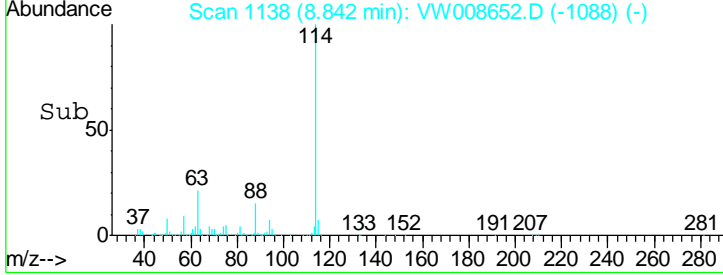
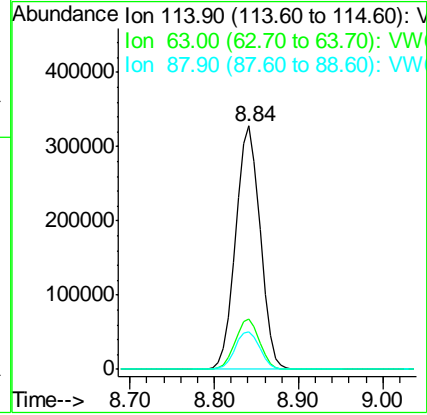
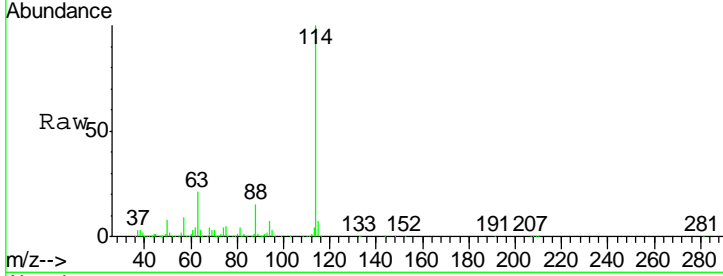




#34
 1,4-Difluorobenzene
 Concen: 50.000 ug/l
 RT: 8.84 min Scan# 1138
 Delta R.T. 0.01 min
 Lab File: VW008652.D
 Acq: 13 Feb 2019 21:31

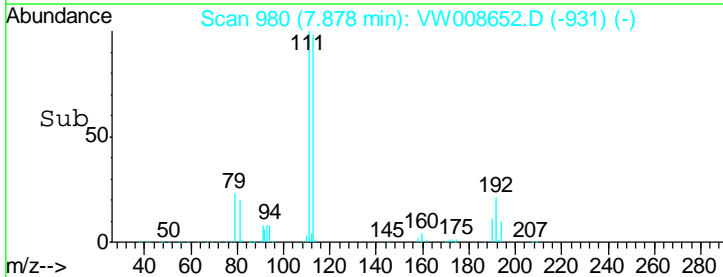
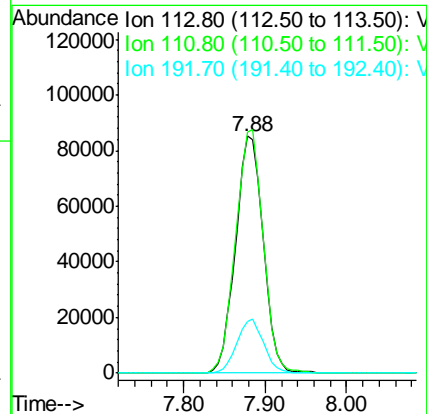
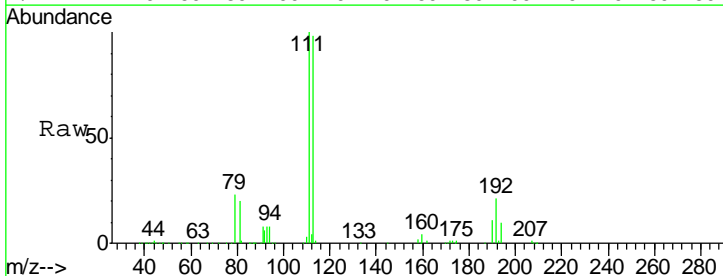
Instrument : MSVOA_W
 ClientSampled : TP-1-S

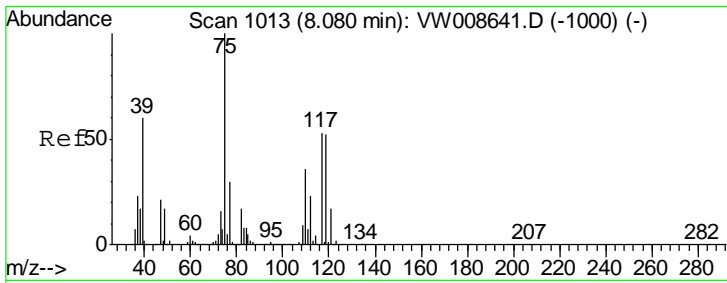
Tgt Ion	Resp	Lower	Upper
114	642439		
63	20.6	0.0	41.2
88	15.3	0.0	29.6



#35
 Dibromofluoromethane
 Concen: 49.879 ug/l
 RT: 7.88 min Scan# 980
 Delta R.T. 0.00 min
 Lab File: VW008652.D
 Acq: 13 Feb 2019 21:31

Tgt Ion	Resp	Lower	Upper
113	198975		
111	102.1	84.0	126.0
192	21.9	17.4	26.2

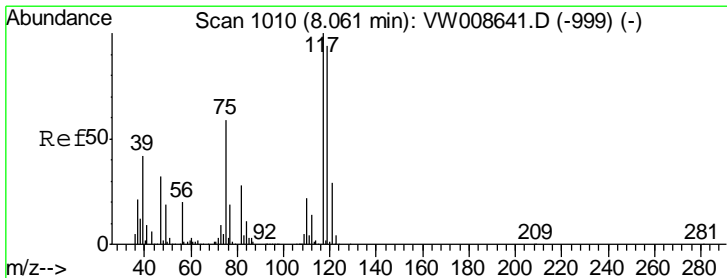
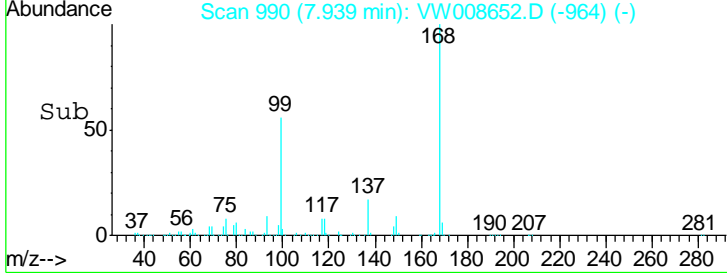
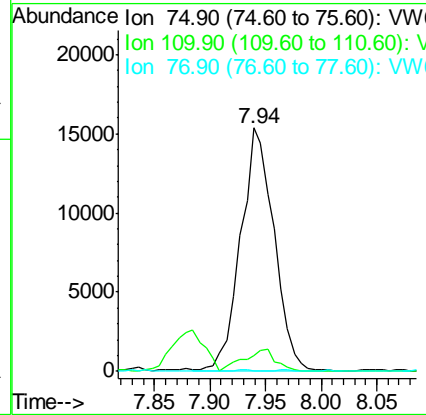
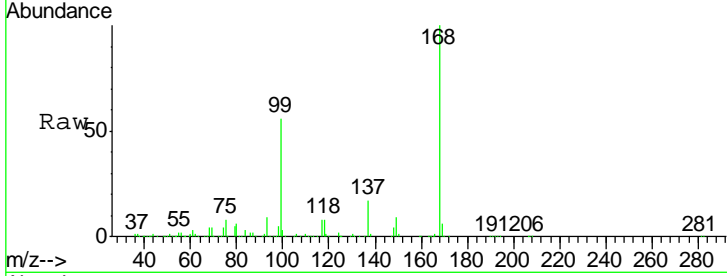




#36
 1,1-Dichloropropene
 Concen: 4.926 ug/l
 RT: 7.94 min Scan# 990
 Delta R.T. -0.14 min
 Lab File: VW008652.D
 Acq: 13 Feb 2019 21:31

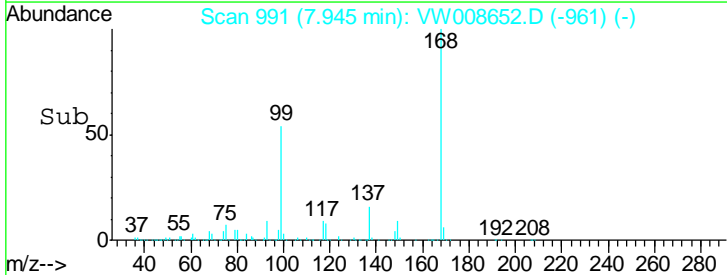
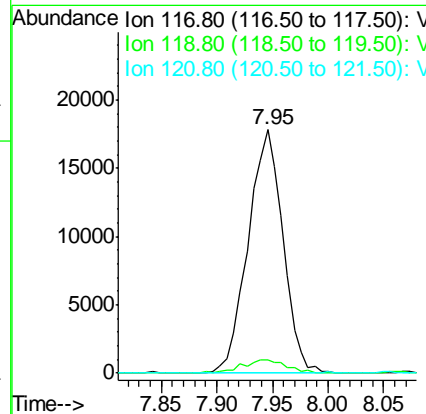
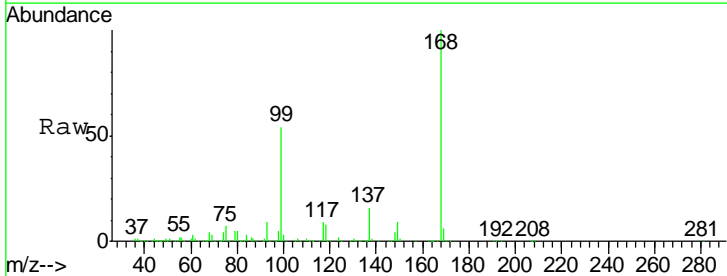
Instrument :
 MSVOA_W
 ClientSampled :
 TP-1-S

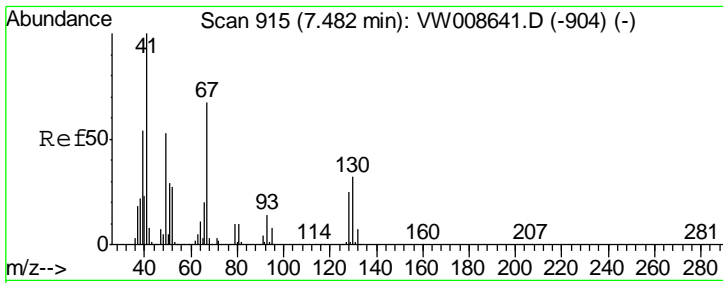
Tgt Ion	Resp	Lower	Upper
75	100		
110	8.9	17.8	53.3#
77	0.0	24.7	37.1#



#38
 Carbon Tetrachloride
 Concen: 6.045 ug/l
 RT: 7.95 min Scan# 991
 Delta R.T. -0.12 min
 Lab File: VW008652.D
 Acq: 13 Feb 2019 21:31

Tgt Ion	Resp	Lower	Upper
117	100		
119	5.3	75.1	112.7#
121	0.0	23.5	35.3#

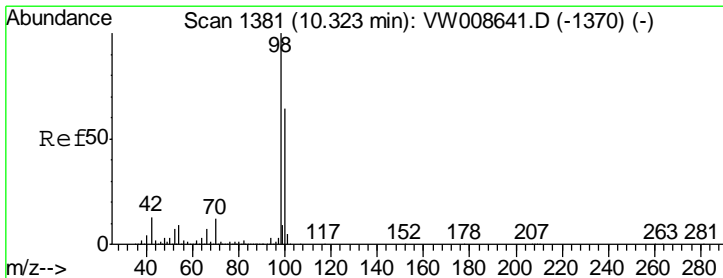
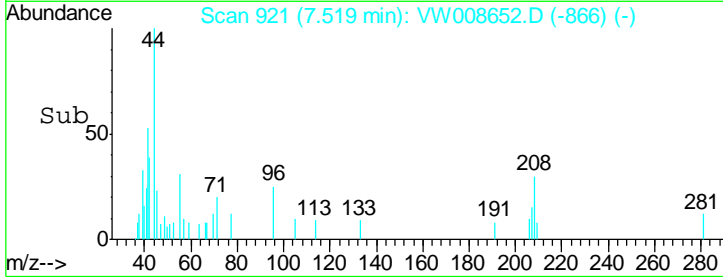
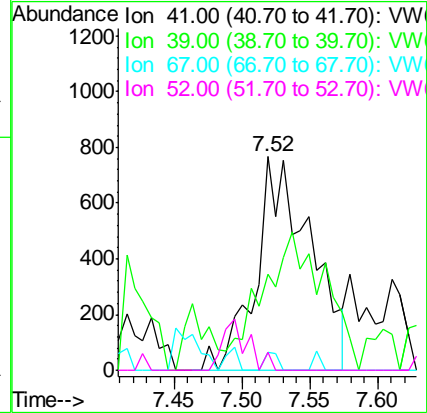
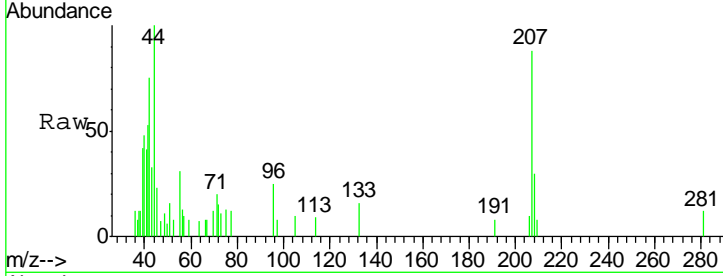




#41
 Methacrylonitrile
 Concen: 1.226 ug/l
 RT: 7.52 min Scan# 921
 Delta R.T. 0.04 min
 Lab File: VW008652.D
 Acq: 13 Feb 2019 21:31

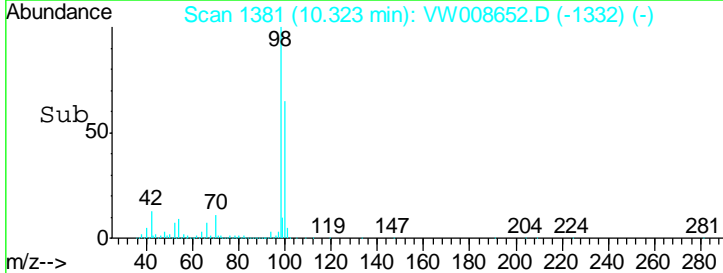
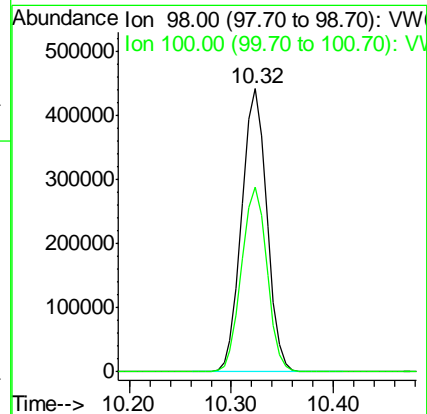
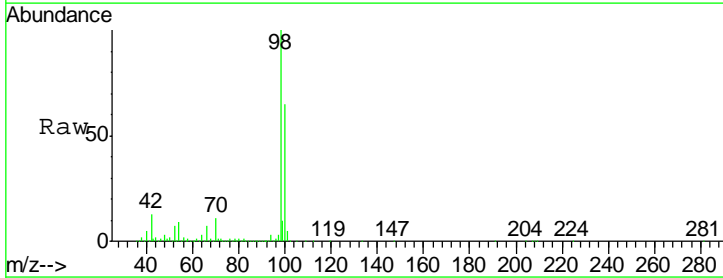
Instrument :
 MSVOA_W
 ClientSampled :
 TP-1-S

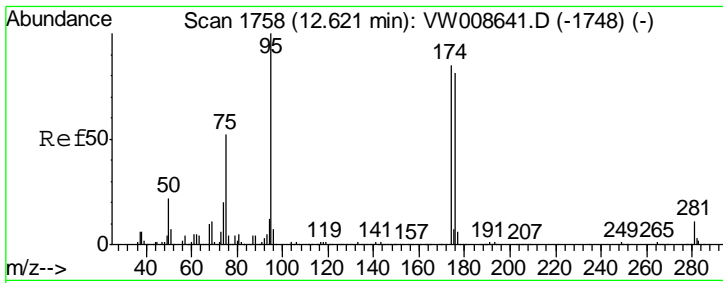
Tgt Ion	Resp	Lower	Upper
41	100		
39	0.0	39.7	59.5#
67	2.1	52.5	78.7#
52	0.0	23.1	34.7#



#50
 Toluene-d8
 Concen: 49.165 ug/l
 RT: 10.32 min Scan# 1381
 Delta R.T. 0.00 min
 Lab File: VW008652.D
 Acq: 13 Feb 2019 21:31

Tgt Ion	Resp	Lower	Upper
98	100		
100	66.0	52.2	78.4

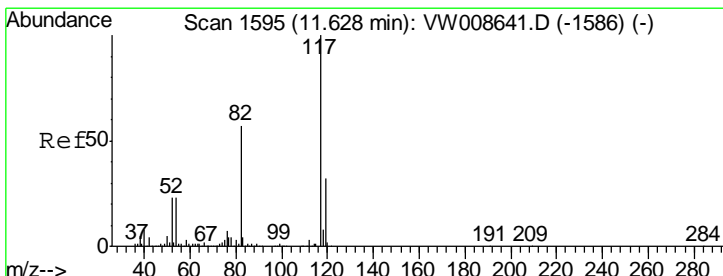
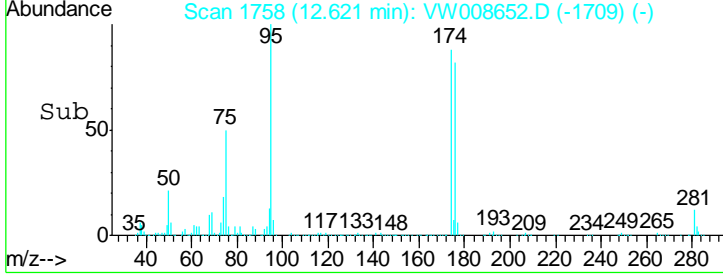
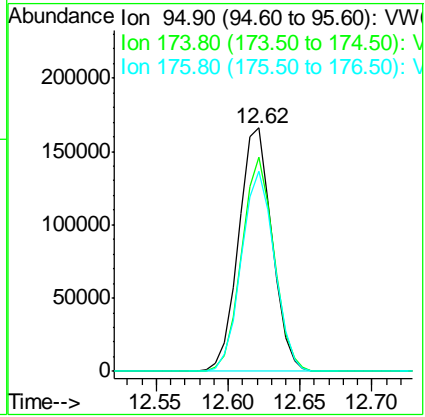
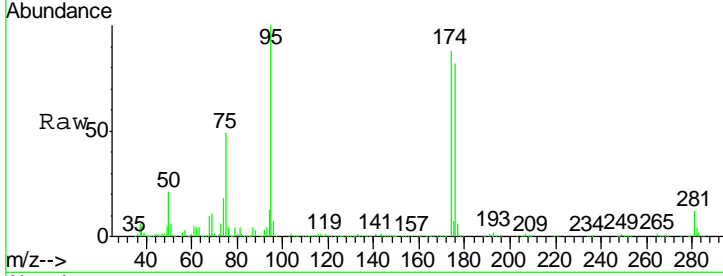




#62
 4-Bromofluorobenzene
 Concen: 45.905 ug/l
 RT: 12.62 min Scan# 1758
 Delta R.T. 0.00 min
 Lab File: VW008652.D
 Acq: 13 Feb 2019 21:31

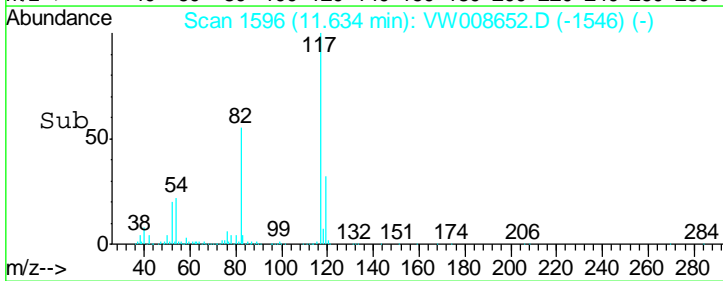
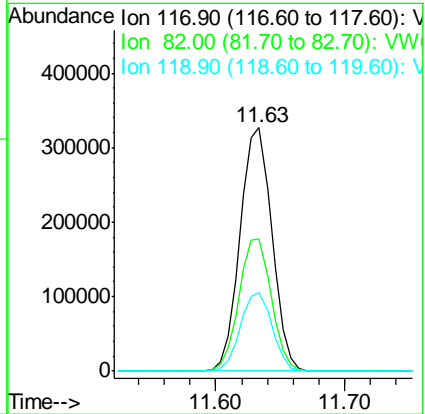
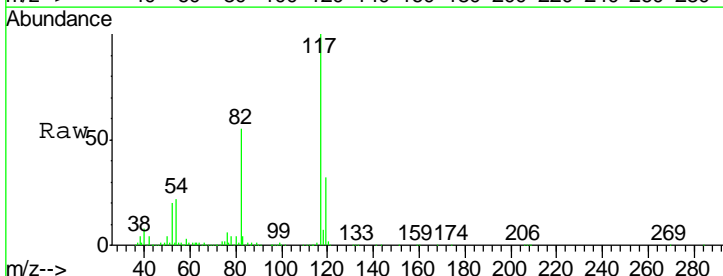
Instrument : MSVOA_W
 ClientSampled : TP-1-S

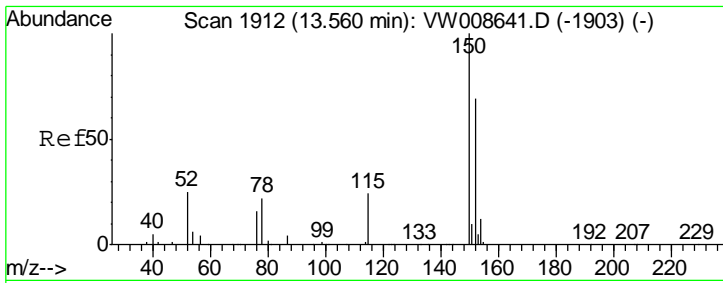
Tgt Ion	Resp	Lower	Upper
95	100		
174	85.4	0.0	163.2
176	81.8	0.0	158.0



#63
 Chlorobenzene-d5
 Concen: 50.000 ug/l
 RT: 11.63 min Scan# 1596
 Delta R.T. 0.01 min
 Lab File: VW008652.D
 Acq: 13 Feb 2019 21:31

Tgt Ion	Resp	Lower	Upper
117	100		
82	54.5	45.6	68.4
119	32.0	25.7	38.5

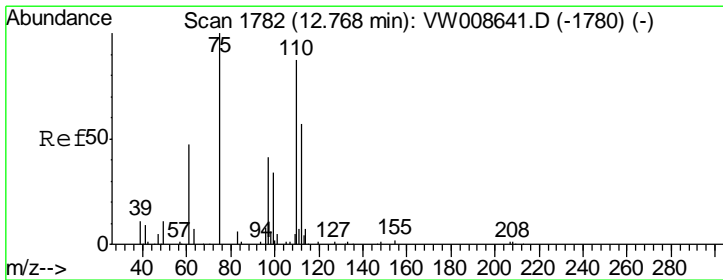
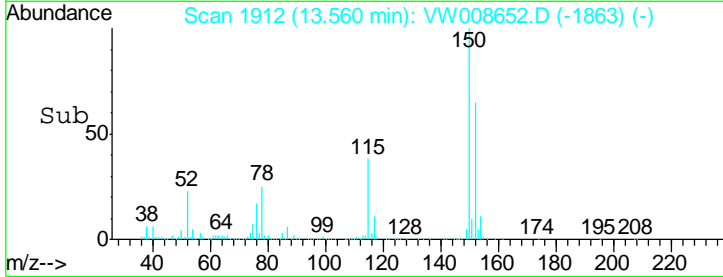
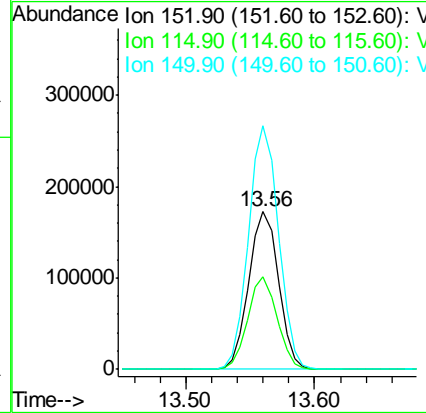
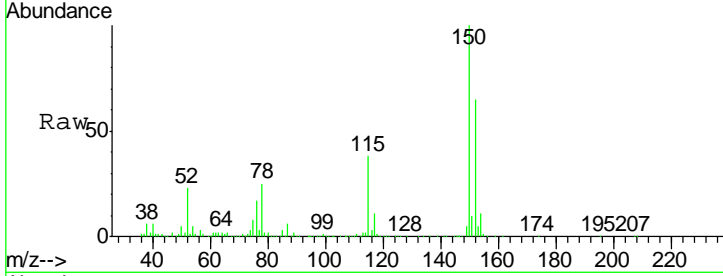




#72
 1,4-Dichlorobenzene-d4
 Concen: 50.000 ug/l
 RT: 13.56 min Scan# 1912
 Delta R.T. 0.00 min
 Lab File: VW008652.D
 Acq: 13 Feb 2019 21:31

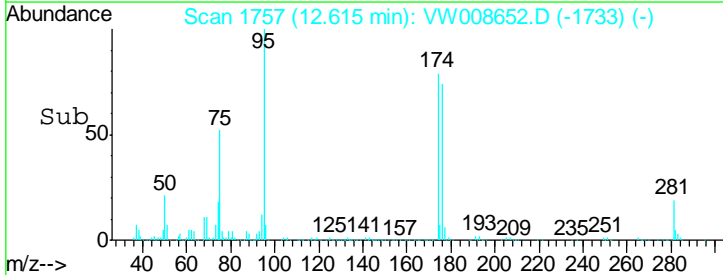
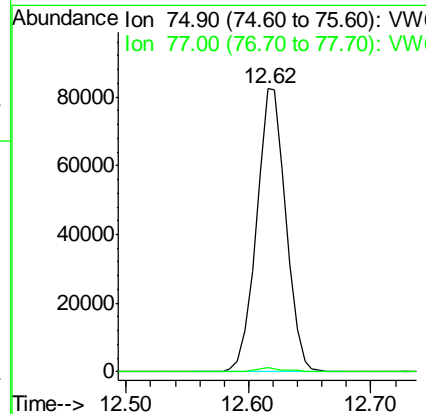
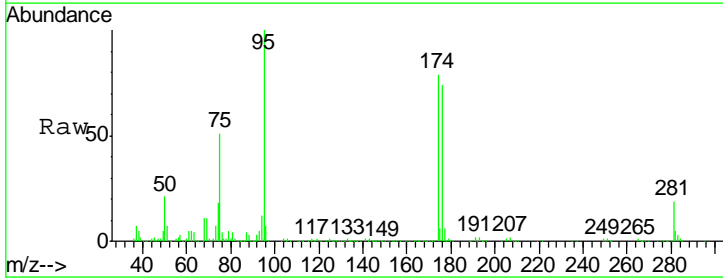
Instrument :
 MSVOA_W
 ClientSampled :
 TP-1-S

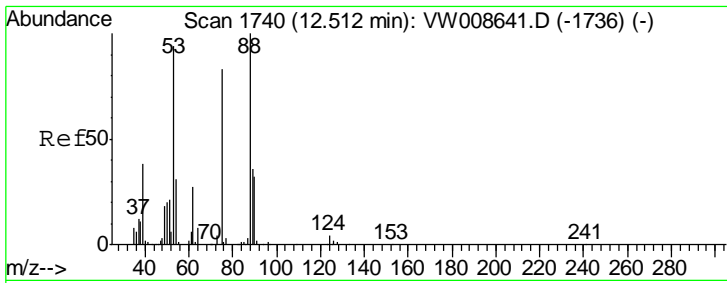
Tgt Ion	Resp	Lower	Upper
152	100		
115	57.5	29.3	87.8
150	155.1	0.0	352.8



#76
 1,2,3-Trichloropropane
 Concen: 50.668 ug/l
 RT: 12.62 min Scan# 1757
 Delta R.T. -0.15 min
 Lab File: VW008652.D
 Acq: 13 Feb 2019 21:31

Tgt Ion	Resp	Lower	Upper
75	100		
77	1.3	0.0	0.0#





#81
 trans-1,4-Dichloro-2-butene
 Concen: 108.602 ug/l
 RT: 12.62 min Scan# 1757
 Delta R.T. 0.10 min
 Lab File: VW008652.D
 Acq: 13 Feb 2019 21:31

Instrument :
 MSVOA_W
 ClientSampled :
 TP-1-S

Tot Ion	Ratio	Lower	Upper
75	100		
53	0.2	87.4	131.0#
89	0.3	37.0	55.4#

