

Data File : VW014974.D  
 Acq On : 13 Feb 2020 11:32  
 Operator : SY/VA  
 Sample : VSTD10005  
 Misc : 5.00G/10ML/MSVOA\_W/SOIL  
 ALS Vial : 1 Sample Multiplier: 1

Instrument :  
 MSVOA\_W  
 ClientSampleId :  
 VSTD100305

Quant Time: Feb 13 11:57:08 2020  
 Quant Method : Z:\VOASRV\HPCHEM1\MSVOA\_W\METHOD\SFAMWLM021320SMA.M  
 Quant Title : SFAM01.0  
 QLast Update : Thu Feb 13 11:44:58 2020  
 Response via : Initial Calibration

Internal Standards	R.T.	QIon	Response	Conc	Units	Dev(Min)
1) 1,4-Difluorobenzene	8.84	114	787974	25.00	ug/L	0.00
28) Chlorobenzene-d5	11.63	117	753990	25.00	ug/L	0.00
58) 1,4-Dichlorobenzene-d4	13.55	152	333845	25.00	ug/L	0.00

System Monitoring Compounds

4) Vinyl Chloride-d3	2.36	65	1503576	138.86	ug/L	0.00
7) Chloroethane-d5	2.89	69	1157640	122.80	ug/L	0.00
11) 1,1-Dichloroethene-d2	4.03	63	2841686	148.73	ug/L	0.00
21) 2-Butanone-d5	7.07	46	942995	197.79	ug/L	0.00
24) Chloroform-d	7.65	84	2380431	134.53	ug/L	0.00
26) 1,2-Dichloroethane-d4	8.31	65	1408339	136.36	ug/L	0.00
32) Benzene-d6	8.27	84	4803861	119.20	ug/L	0.00
36) 1,2-Dichloropropane-d6	9.27	67	1664996	134.18	ug/L	0.00
41) Toluene-d8	10.32	98	4311564	116.20	ug/L	0.00
43) trans-1,3-Dichloropropene-	10.57	79	702284	112.16	ug/L	0.00
47) 2-Hexanone-d5	10.92	63	734374	171.01	ug/L	0.00
56) 1,1,2,2-Tetrachloroethane-	12.69	84	1245117	92.47	ug/L	0.00
66) 1,2-Dichlorobenzene-d4	13.85	152	1232097	102.73	ug/L	0.00

Target Compounds

						Qvalue
2) Dichlorodifluoromethane	2.01	85	832203	67.572	ug/L	92
3) Chloromethane	2.22	50	1487128	110.528	ug/L	100
5) Vinyl chloride	2.37	62	1755430	124.012	ug/L	98
6) Bromomethane	2.78	94	824089	100.060	ug/L	97
8) Chloroethane	2.92	64	970931	118.907	ug/L	98
9) Trichlorofluoromethane	3.26	101	752060	45.264	ug/L	100
10) 1,1,2-Trichloro-1,2,2-trif	4.06	101	1160497	112.503	ug/L	99
12) 1,1-Dichloroethene	4.04	96	1200830	117.992	ug/L	94
13) Acetone	4.12	43	864067	157.052	ug/L	97
14) Carbon disulfide	4.39	76	4174386	121.447	ug/L	100
15) Methyl Acetate	4.67	43	826995	97.266	ug/L	100
16) Methylene chloride	4.92	84	1272356	96.653	ug/L	99
17) trans-1,2-Dichloroethene	5.42	96	1231678	108.077	ug/L	99
18) Methyl tert-butyl Ether	5.42	73	1595706	50.700	ug/L	98
19) 1,1-Dichloroethane	6.21	63	2640607	135.707	ug/L	98
20) cis-1,2-Dichloroethene	7.17	96	1316185	105.148	ug/L	99
22) 2-Butanone	7.17	43	1239321	179.913	ug/L	99
23) Bromochloromethane	7.51	128	497459	89.895	ug/L	97
25) Chloroform	7.67	83	2309443	119.952	ug/L	100
27) 1,2-Dichloroethane	8.40	62	1720199	126.012	ug/L	99
29) Cyclohexane	7.95	56	2769579	131.578	ug/L	100
30) 1,1,1-Trichloroethane	7.87	97	1748367	103.359	ug/L	100
31) Carbon tetrachloride	8.07	117	1602847	107.441	ug/L	100
33) Benzene	8.32	78	5398630	112.328	ug/L	100
34) Trichloroethene	9.09	95	1310739	106.871	ug/L	99
35) Methylcyclohexane	9.34	83	2443095	108.079	ug/L	98
37) 1,2-Dichloropropane	9.37	63	1515568	125.157	ug/L	100
38) Bromodichloromethane	9.64	83	1742205	112.389	ug/L	98
39) cis-1,3-Dichloropropene	10.07	75	2336911	113.930	ug/L	99
40) 4-Methyl-2-pentanone	10.21	43	2491430	189.506	ug/L	99

Data File : VW014974.D  
 Acq On : 13 Feb 2020 11:32  
 Operator : SY/VA  
 Sample : VSTD10005  
 Misc : 5.00G/10ML/MSVOA\_W/SOIL  
 ALS Vial : 1 Sample Multiplier: 1

Instrument :  
 MSVOA\_W  
 ClientSampleId :  
 VSTD100305

Quant Time: Feb 13 11:57:08 2020  
 Quant Method : Z:\VOASRV\HPCHEM1\MSVOA\_W\METHOD\SFAMWLM021320SMA.M  
 Quant Title : SFAM01.0  
 QLast Update : Thu Feb 13 11:44:58 2020  
 Response via : Initial Calibration

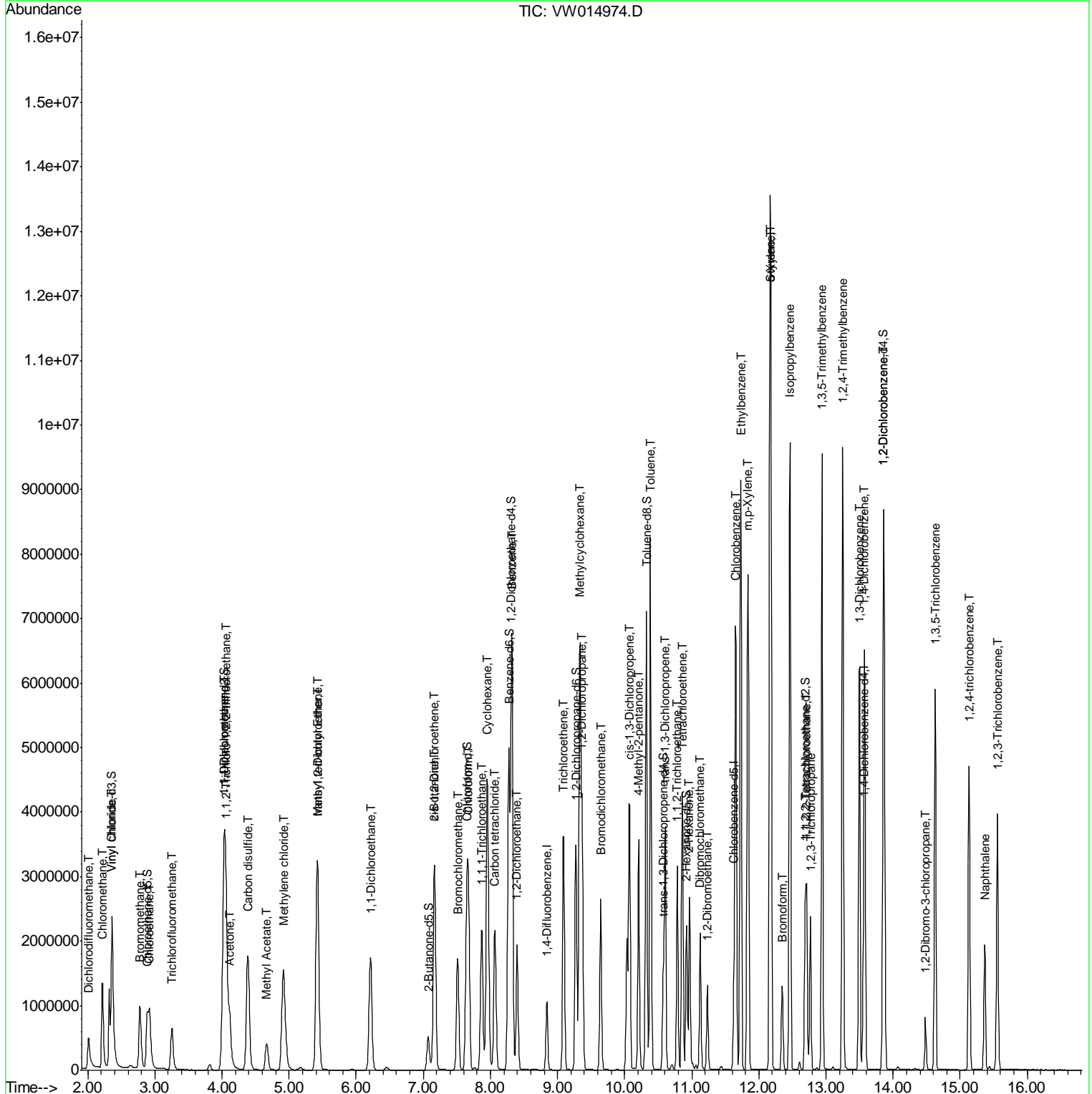
Internal Standards	R.T.	QIon	Response	Conc	Units	Dev(Min)
42) Toluene	10.38	91	5504476	105.781	ug/L	96
44) trans-1,3-Dichloropropene	10.60	75	1908232	109.352	ug/L	99
45) 1,1,2-Trichloroethane	10.79	97	939892	90.112	ug/L	99
46) Tetrachloroethene	10.86	164	861855	91.353	ug/L	97
48) 2-Hexanone	10.96	43	1870034	185.447	ug/L	100
49) Dibromochloromethane	11.13	129	1019918	90.472	ug/L	96
50) 1,2-Dibromoethane	11.23	107	876002	83.148	ug/L	100
51) Chlorobenzene	11.66	112	3179347	96.427	ug/L	100
52) Ethylbenzene	11.73	91	6246300	107.074	ug/L	98
53) m,p-Xylene	11.84	106	2237158	98.701	ug/L	99
54) o-Xylene	12.16	106	2166295	99.756	ug/L	93
55) Styrene	12.18	104	3729427	98.107	ug/L	100
57) 1,1,2,2-Tetrachloroethane	12.71	83	1257915	86.024	ug/L	99
59) Bromoform	12.35	173	540470	76.566	ug/L	99
60) Isopropylbenzene	12.46	105	5756029	108.221	ug/L	99
61) 1,2,3-Trichloropropane	12.77	75	979359	94.341	ug/L	99
62) 1,3,5-Trimethylbenzene	12.94	105	4887818	111.022	ug/L	99
63) 1,2,4-Trimethylbenzene	13.25	105	4809332	110.408	ug/L	100
64) 1,3-Dichlorobenzene	13.50	146	2245920	95.197	ug/L	97
65) 1,4-Dichlorobenzene	13.58	146	2247241	94.883	ug/L	99
67) 1,2-Dichlorobenzene	13.87	146	2051305	93.937	ug/L	98
68) 1,2-Dibromo-3-chloropropan	14.48	75	217282	82.937	ug/L	98
69) 1,3,5-Trichlorobenzene	14.63	180	1547787	95.485	ug/L	99
70) 1,2,4-trichlorobenzene	15.13	180	1288826	87.262	ug/L	99
71) Naphthalene	15.36	128	1472782	35.789	ug/L	99
72) 1,2,3-Trichlorobenzene	15.55	180	1183309	85.881	ug/L	100

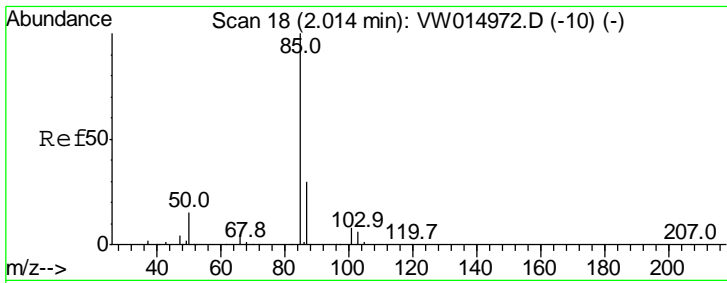
(#) = qualifier out of range (m) = manual integration (+) = signals summed

Data File : VW014974.D  
Acq On : 13 Feb 2020 11:32  
Operator : SY/VA  
Sample : VSTD10005  
Misc : 5.00G/10ML/MSVOA\_W/SOIL  
ALS Vial : 1 Sample Multiplier: 1

Instrument :  
MSVOA\_W  
Client Sampled :  
VSTD100305

Quant Time: Feb 13 11:57:08 2020  
Quant Method : Z:\VOASRV\HPCHEM1\MSVOA\_W\METHOD\SFAMWLM021320SMA.M  
Quant Title : SFAM01.0  
QLast Update : Thu Feb 13 11:44:58 2020  
Response via : Initial Calibration

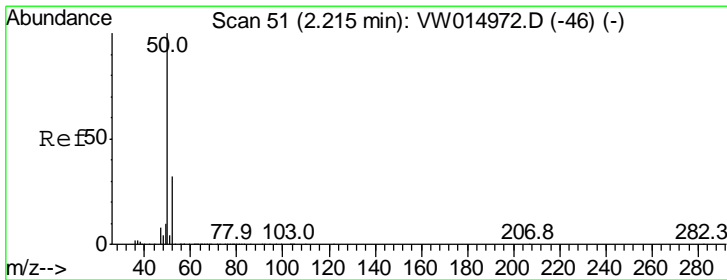
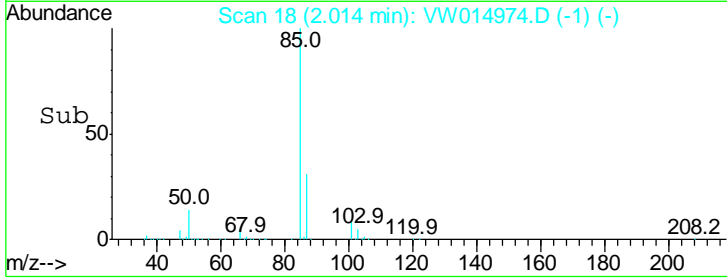
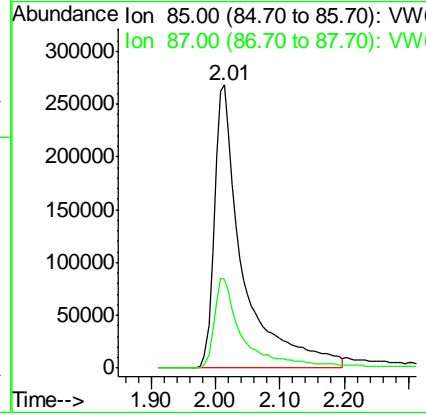
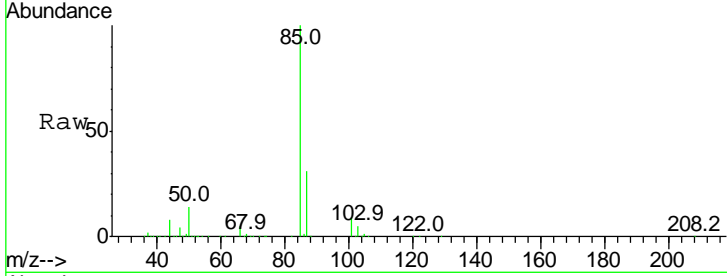




#2  
 Dichlorodifluoromethane  
 Concen: 67.572 ug/L  
 RT: 2.01 min Scan# 18  
 Delta R.T. -0.00 min  
 Lab File: VW014974.D  
 Acq: 13 Feb 2020 11:32

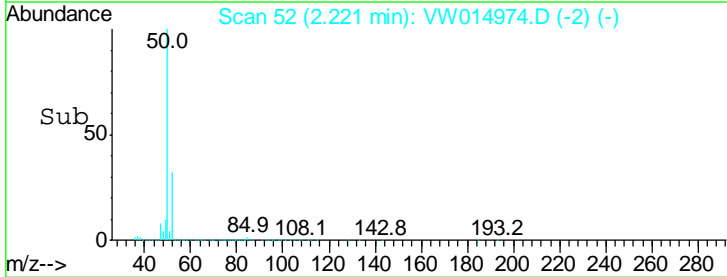
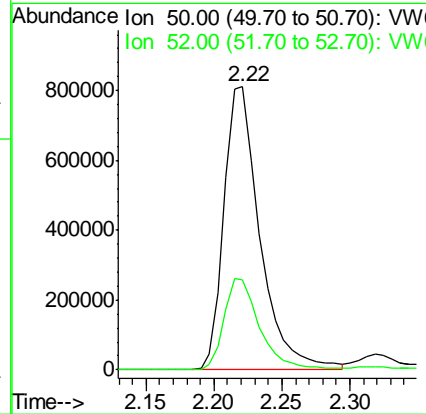
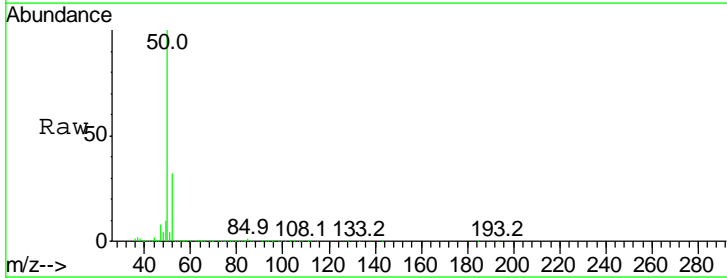
**Instrument :**  
 MSVOA\_W  
**ClientSampled :**  
 VSTD100305

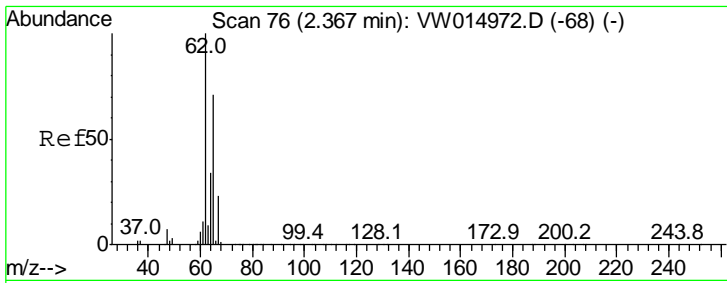
Tgt Ion: 85 Resp: 832203  
 Ion Ratio Lower Upper  
 85 100  
 87 30.9 21.5 32.3



#3  
 Chloromethane  
 Concen: 110.528 ug/L  
 RT: 2.22 min Scan# 52  
 Delta R.T. 0.01 min  
 Lab File: VW014974.D  
 Acq: 13 Feb 2020 11:32

Tgt Ion: 50 Resp: 1487128  
 Ion Ratio Lower Upper  
 50 100  
 52 32.0 22.3 41.3

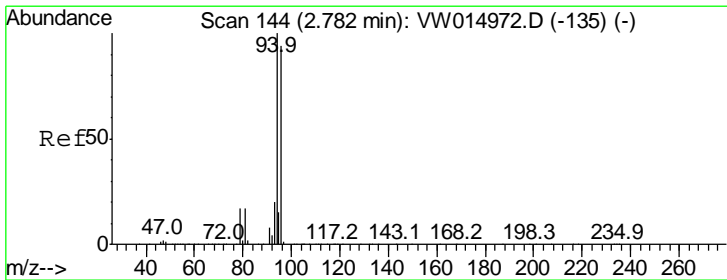
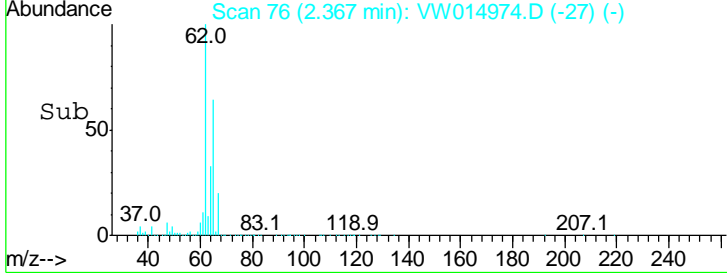
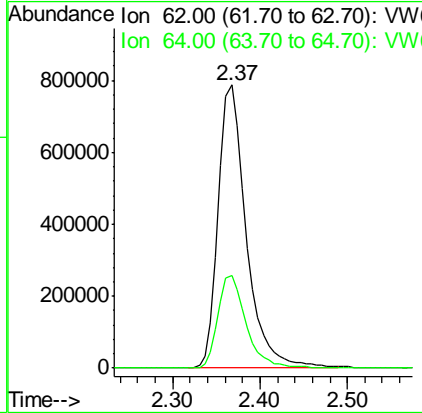
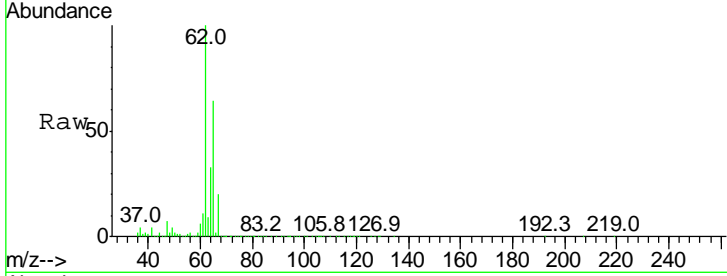




#5  
 Vinyl chloride  
 Concen: 124.012 ug/L  
 RT: 2.37 min Scan# 76  
 Delta R.T. -0.00 min  
 Lab File: VW014974.D  
 Acq: 13 Feb 2020 11:32

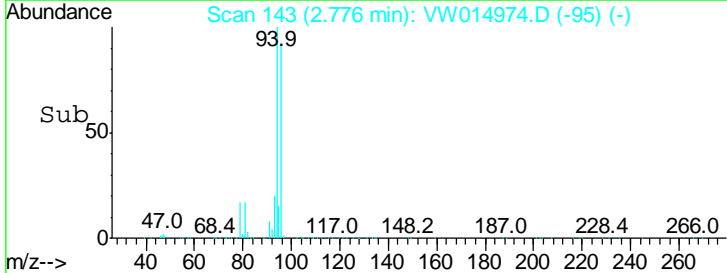
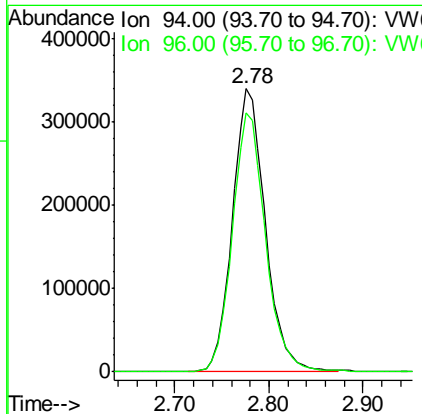
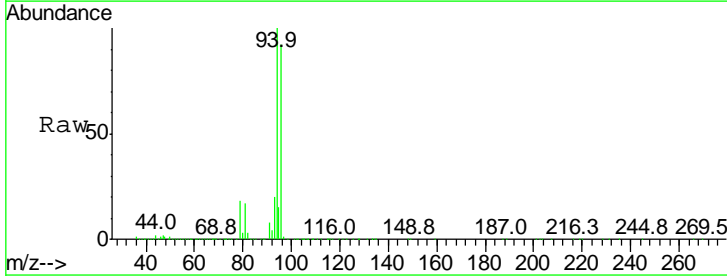
**Instrument :**  
 MSVOA\_W  
**ClientSampled :**  
 VSTD100305

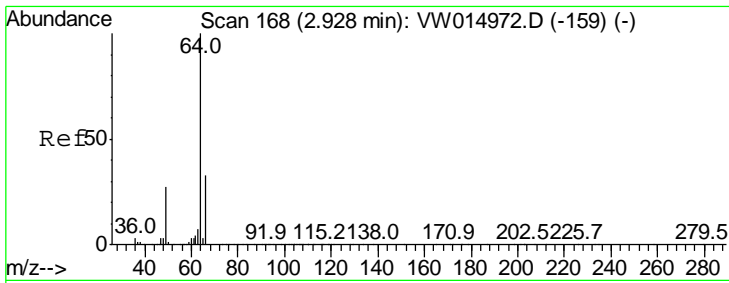
Tgt Ion: 62 Resp: 1755430  
 Ion Ratio Lower Upper  
 62 100  
 64 32.5 23.6 43.8



#6  
 Bromomethane  
 Concen: 100.060 ug/L  
 RT: 2.78 min Scan# 143  
 Delta R.T. -0.01 min  
 Lab File: VW014974.D  
 Acq: 13 Feb 2020 11:32

Tgt Ion: 94 Resp: 824089  
 Ion Ratio Lower Upper  
 94 100  
 96 91.5 65.8 122.2

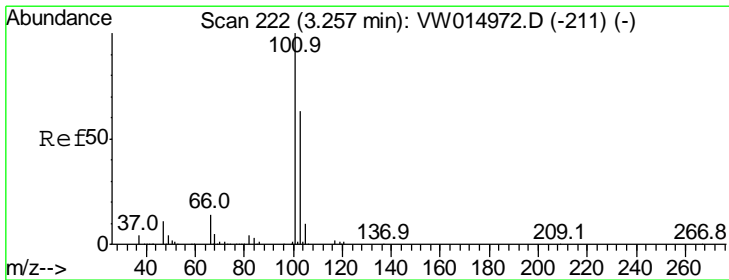
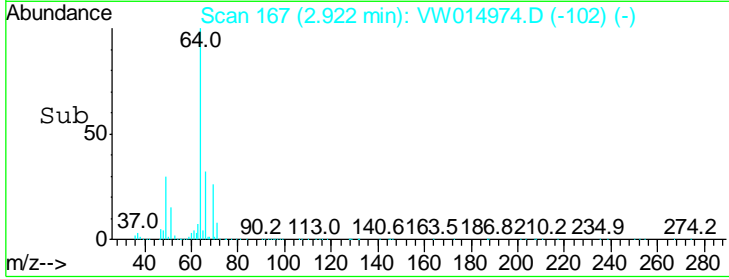
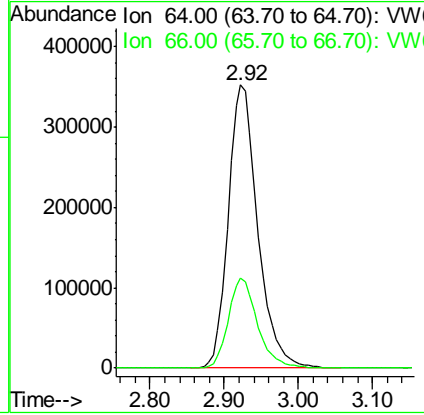
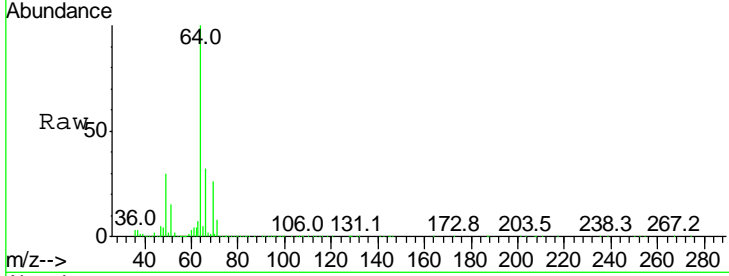




#8  
 Chloroethane  
 Concen: 118.907 ug/L  
 RT: 2.92 min Scan# 167  
 Delta R.T. -0.01 min  
 Lab File: VW014974.D  
 Acq: 13 Feb 2020 11:32

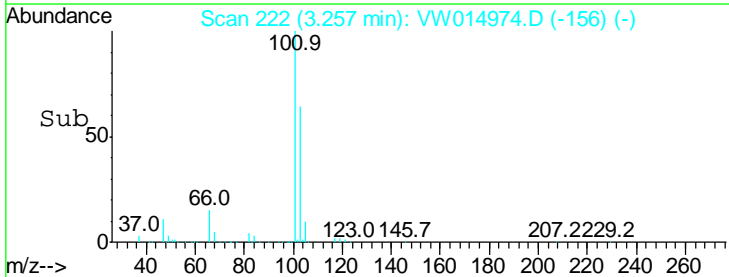
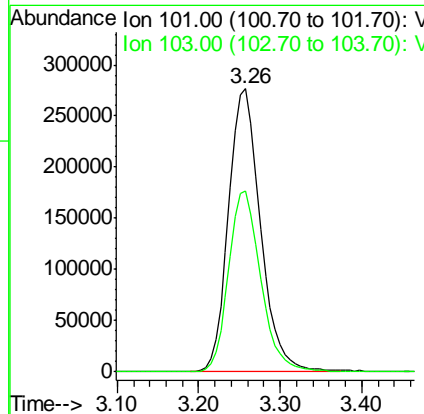
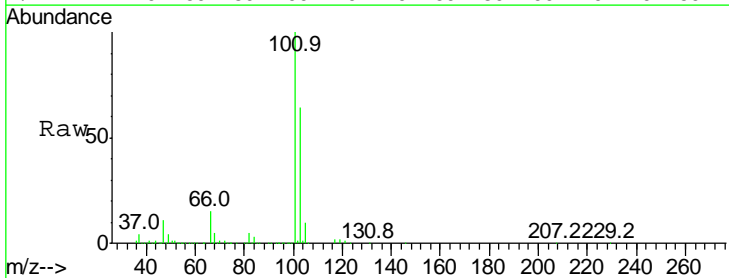
Instrument :  
 MSVOA\_W  
 ClientSampled :  
 VSTD100305

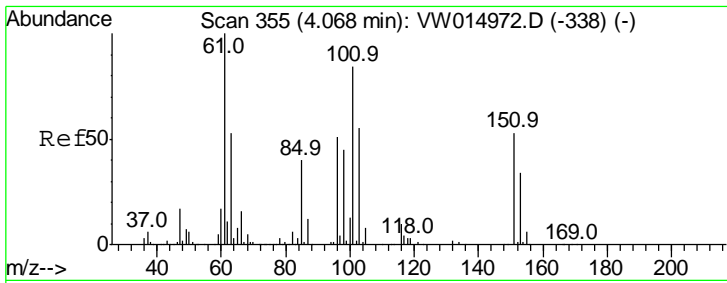
Tgt Ion: 64 Resp: 970931  
 Ion Ratio Lower Upper  
 64 100  
 66 32.0 23.1 42.9



#9  
 Trichlorofluoromethane  
 Concen: 45.264 ug/L  
 RT: 3.26 min Scan# 222  
 Delta R.T. -0.00 min  
 Lab File: VW014974.D  
 Acq: 13 Feb 2020 11:32

Tgt Ion: 101 Resp: 752060  
 Ion Ratio Lower Upper  
 101 100  
 103 64.2 51.5 77.3





#10

1,1,2-Trichloro-1,2,2-trifluoroethane

Concen: 112.503 ug/L

RT: 4.06 min Scan# 354

Delta R.T. -0.01 min

Lab File: VW014974.D

Acq: 13 Feb 2020 11:32

Instrument :  
MSVOA\_W  
ClientSampled :  
VSTD100305

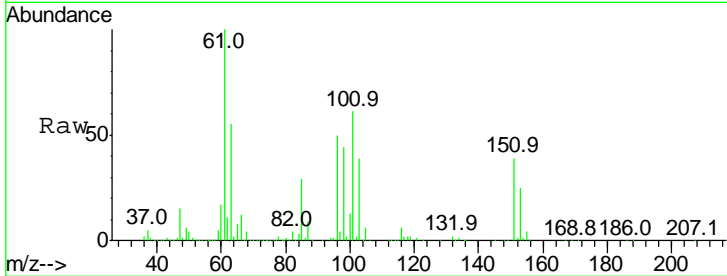
Tgt Ion:101 Resp: 1160497

Ion Ratio Lower Upper

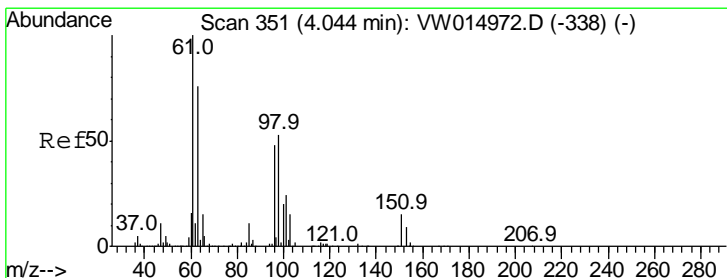
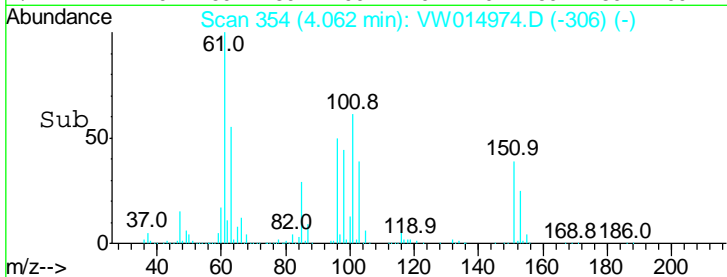
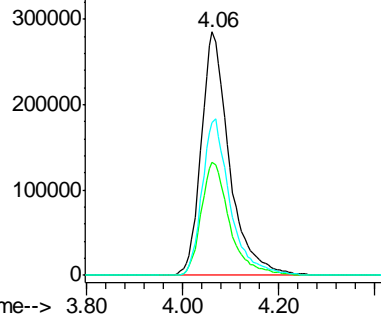
101 100

85 46.8 36.5 54.7

151 63.7 50.2 75.4



Abundance Ion 101.00 (100.70 to 101.70): V  
Ion 85.00 (84.70 to 85.70): VV  
Ion 151.00 (150.70 to 151.70): V



#12

1,1-Dichloroethene

Concen: 117.992 ug/L

RT: 4.04 min Scan# 350

Delta R.T. -0.01 min

Lab File: VW014974.D

Acq: 13 Feb 2020 11:32

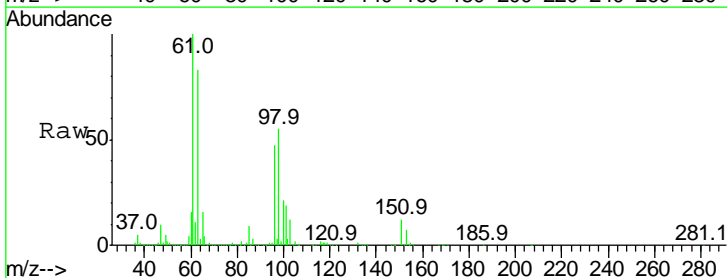
Tgt Ion: 96 Resp: 1200830

Ion Ratio Lower Upper

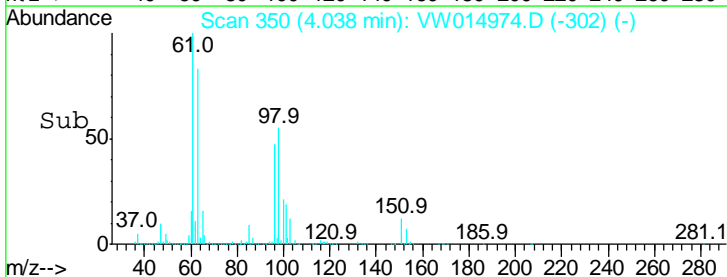
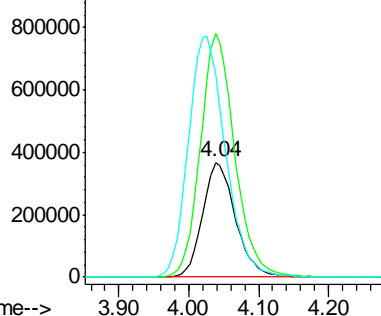
96 100

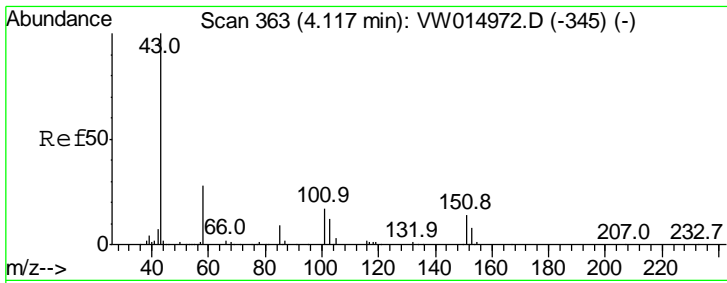
61 212.4 147.0 273.0

63 176.5 113.4 210.6



Abundance Ion 96.00 (95.70 to 96.70): VV  
Ion 61.00 (60.70 to 61.70): VV  
Ion 63.00 (62.70 to 63.70): VV

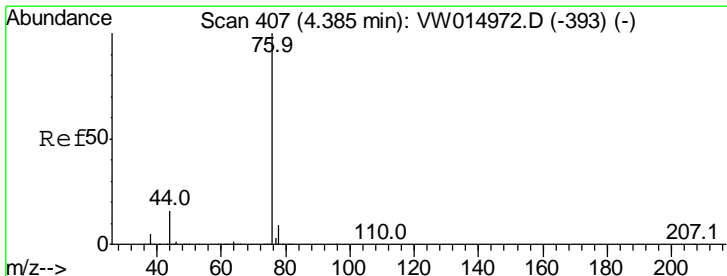
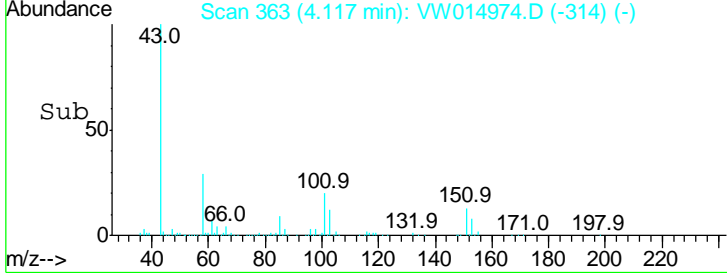
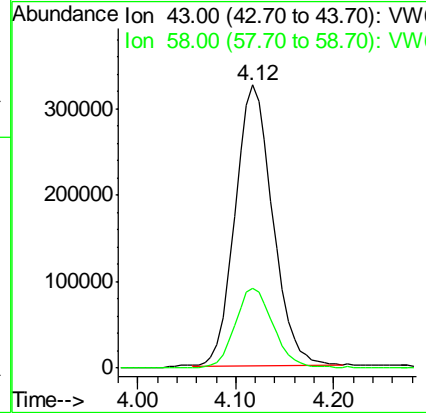
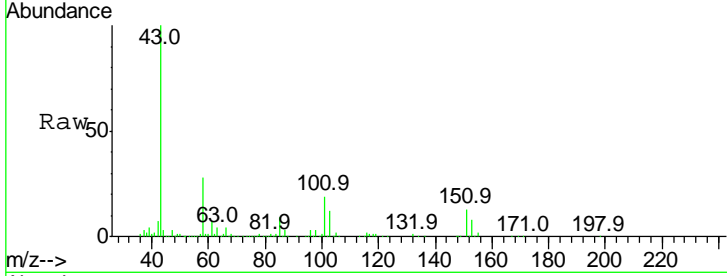




#13  
 Acetone  
 Concen: 157.052 ug/L  
 RT: 4.12 min Scan# 363  
 Delta R.T. -0.00 min  
 Lab File: VW014974.D  
 Acq: 13 Feb 2020 11:32

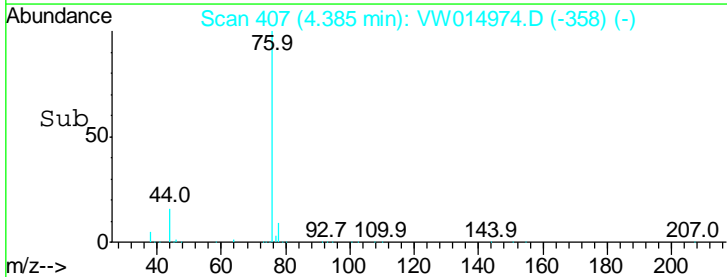
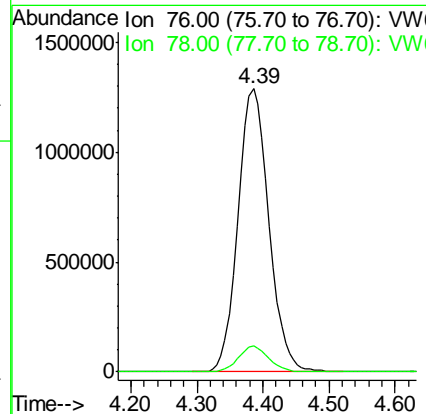
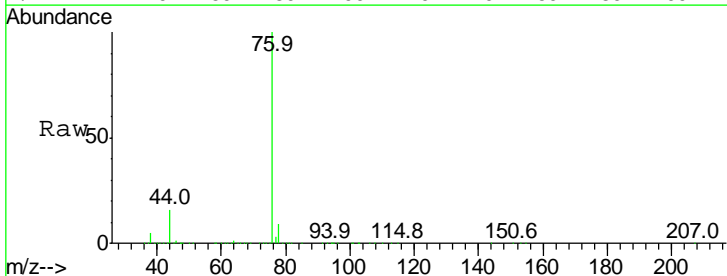
Instrument :  
 MSVOA\_W  
 ClientSampled :  
 VSTD100305

Tgt Ion	Resp	Lower	Upper
43	100		
58	28.8	0.0	54.6

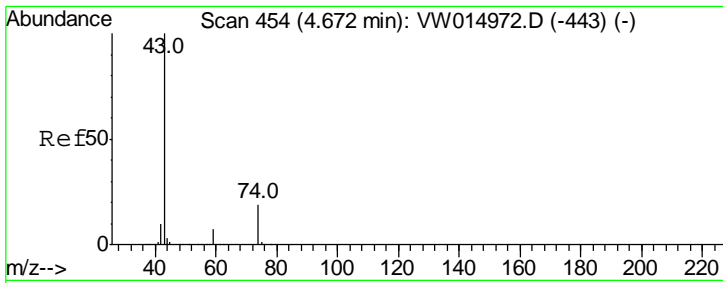


#14  
 Carbon disulfide  
 Concen: 121.447 ug/L  
 RT: 4.39 min Scan# 407  
 Delta R.T. -0.00 min  
 Lab File: VW014974.D  
 Acq: 13 Feb 2020 11:32

Tgt Ion	Resp	Lower	Upper
76	100		
78	9.1	7.2	10.8



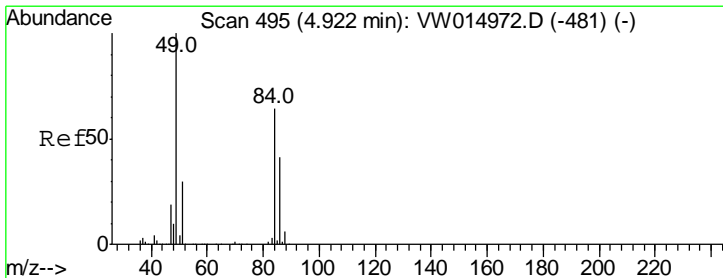
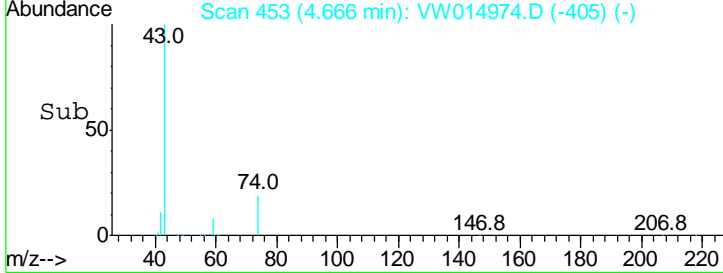
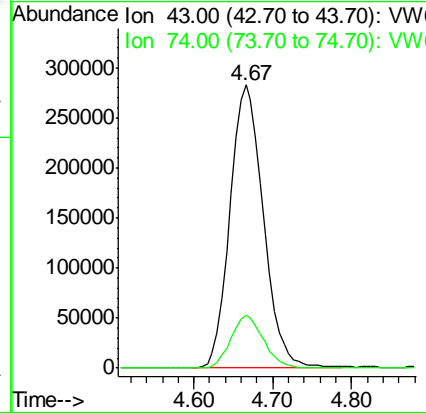
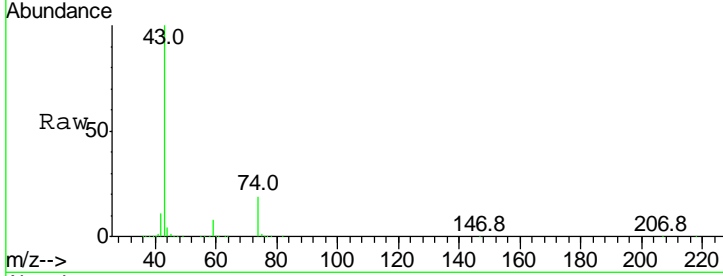




#15  
 Methyl Acetate  
 Concen: 97.266 ug/L  
 RT: 4.67 min Scan# 453  
 Delta R.T. -0.01 min  
 Lab File: VW014974.D  
 Acq: 13 Feb 2020 11:32

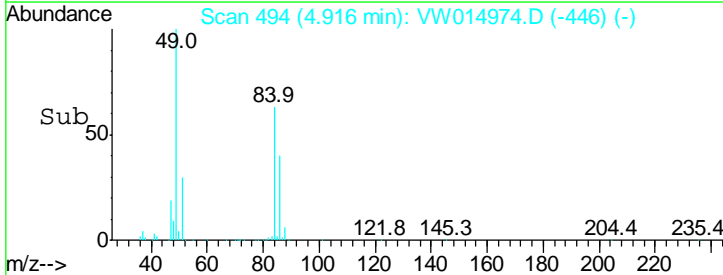
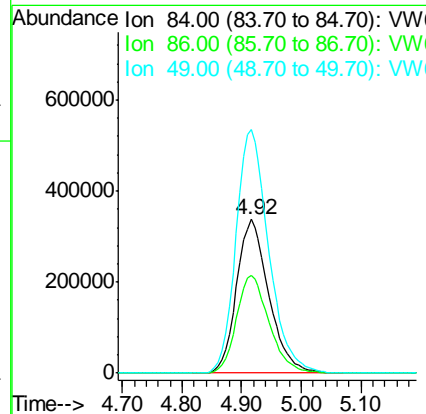
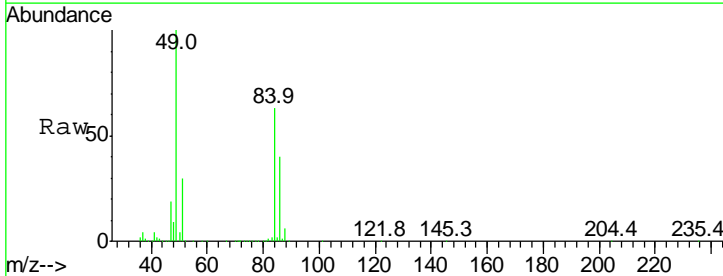
**Instrument :**  
 MSVOA\_W  
**ClientSampled :**  
 VSTD100305

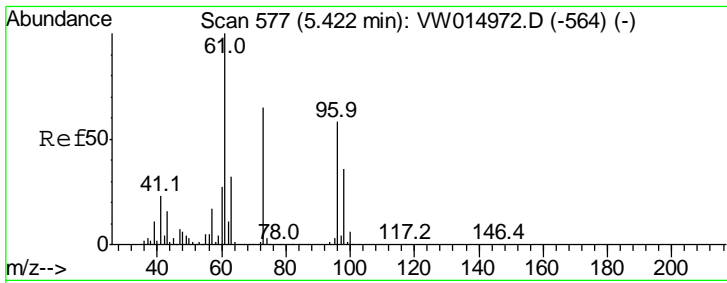
Tgt Ion	Resp	Lower	Upper
43	100		
74	18.3	14.6	21.8



#16  
 Methylene chloride  
 Concen: 96.653 ug/L  
 RT: 4.92 min Scan# 494  
 Delta R.T. -0.01 min  
 Lab File: VW014974.D  
 Acq: 13 Feb 2020 11:32

Tgt Ion	Resp	Lower	Upper
84	100		
86	63.3	44.4	82.4
49	158.2	109.0	202.4

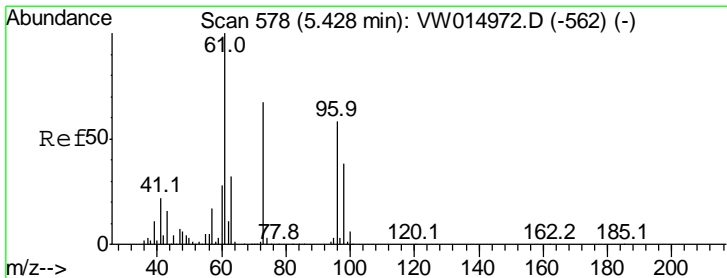
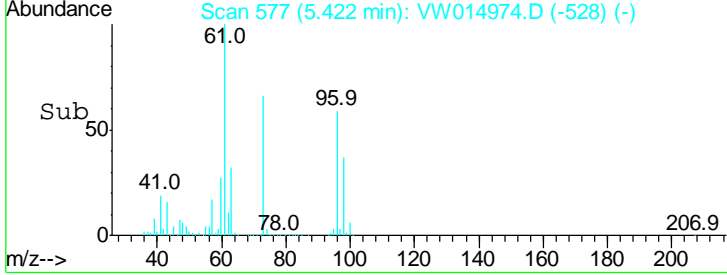
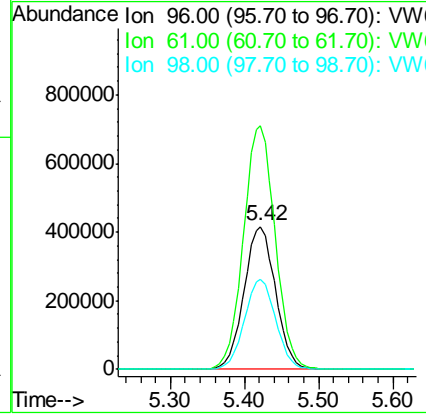
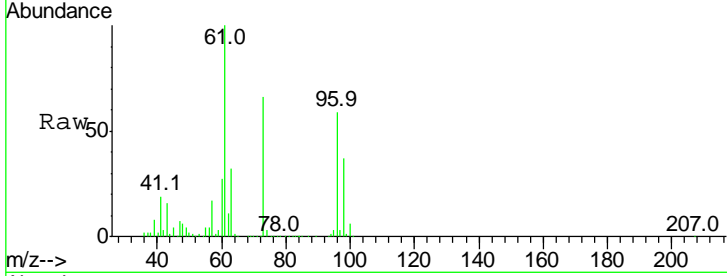




#17  
 trans-1,2-Dichloroethene  
 Concen: 108.077 ug/L  
 RT: 5.42 min Scan# 577  
 Delta R.T. -0.00 min  
 Lab File: VW014974.D  
 Acq: 13 Feb 2020 11:32

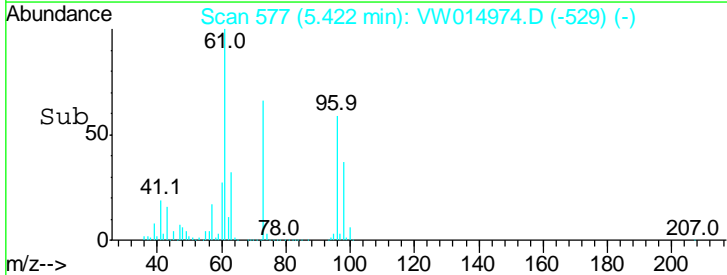
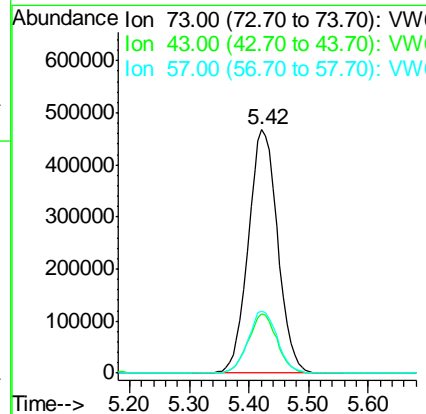
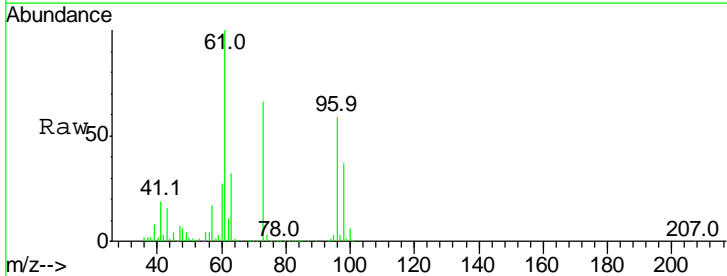
**Instrument :**  
 MSVOA\_W  
**ClientSampled :**  
 VSTD100305

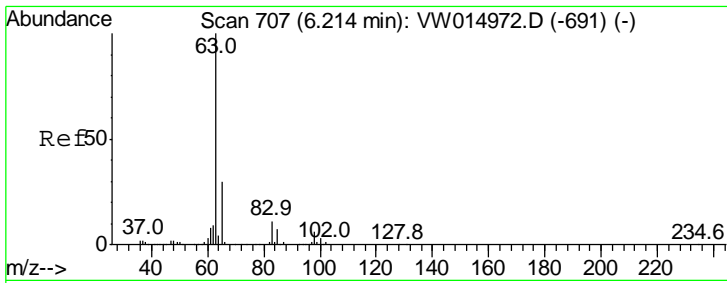
Tgt Ion: 96 Resp: 1231678  
 Ion Ratio Lower Upper  
 96 100  
 61 170.8 120.1 223.1  
 98 62.8 43.8 81.3



#18  
 Methyl tert-butyl Ether  
 Concen: 50.700 ug/L  
 RT: 5.42 min Scan# 577  
 Delta R.T. -0.01 min  
 Lab File: VW014974.D  
 Acq: 13 Feb 2020 11:32

Tgt Ion: 73 Resp: 1595706  
 Ion Ratio Lower Upper  
 73 100  
 43 23.8 19.6 29.4  
 57 25.3 21.0 31.4

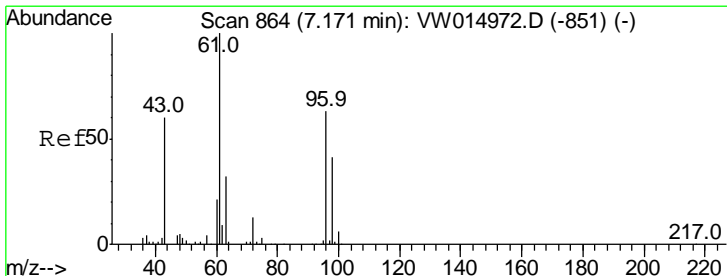
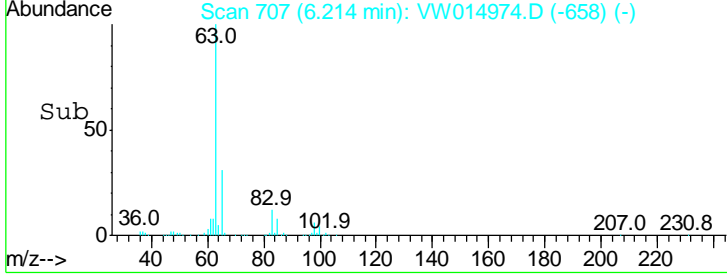
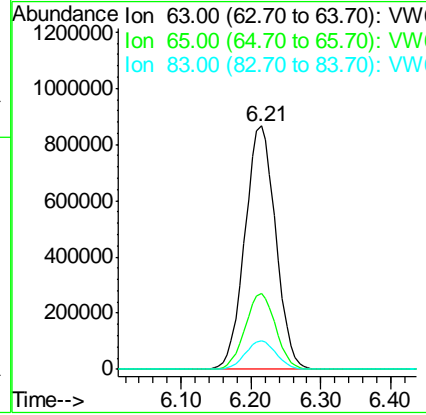
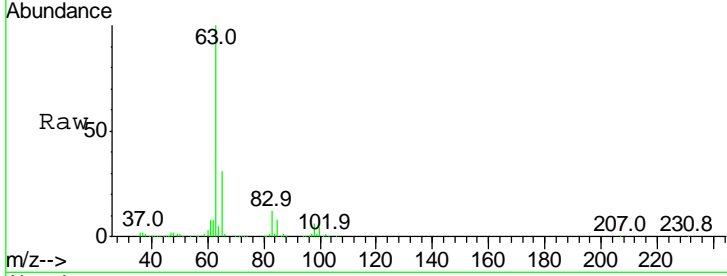




#19  
 1,1-Dichloroethane  
 Concen: 135.707 ug/L  
 RT: 6.21 min Scan# 707  
 Delta R.T. -0.00 min  
 Lab File: VW014974.D  
 Acq: 13 Feb 2020 11:32

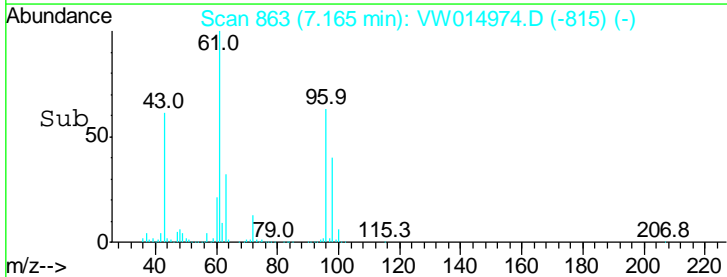
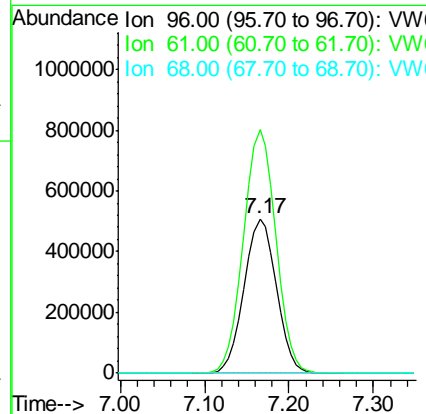
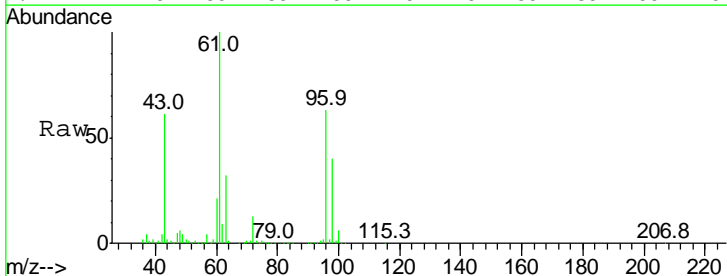
**Instrument :**  
 MSVOA\_W  
**ClientSampled :**  
 VSTD100305

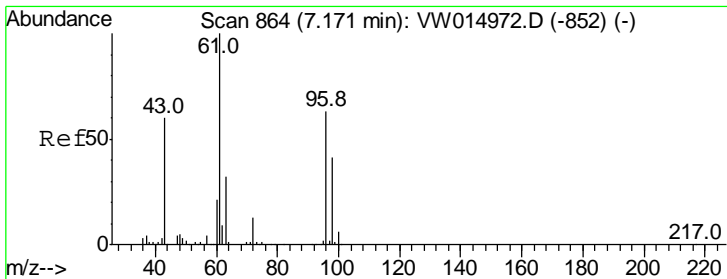
Tgt Ion	Resp	Lower	Upper
63	100		
65	31.1	20.9	38.7
83	11.8	7.8	14.6



#20  
 cis-1,2-Dichloroethene  
 Concen: 105.148 ug/L  
 RT: 7.17 min Scan# 864  
 Delta R.T. -0.01 min  
 Lab File: VW014974.D  
 Acq: 13 Feb 2020 11:32

Tgt Ion	Resp	Lower	Upper
96	100		
61	158.0	111.5	207.1
68	0.0	0.0	0.0

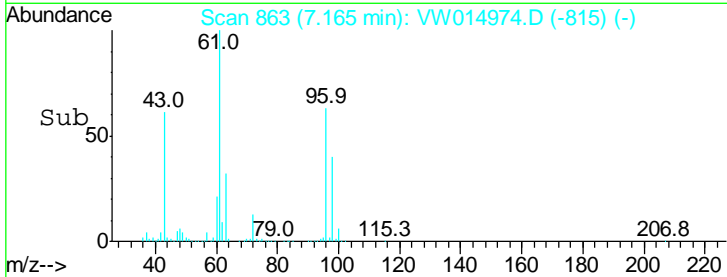
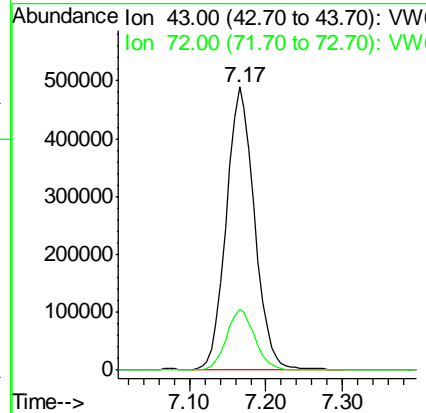
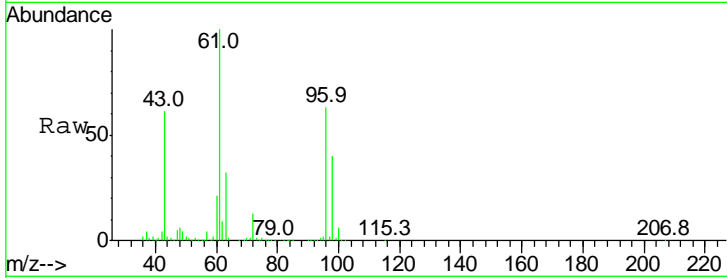




#22  
 2-Butanone  
 Concen: 179.913 ug/L  
 RT: 7.17 min Scan# 863  
 Delta R.T. -0.01 min  
 Lab File: VW014974.D  
 Acq: 13 Feb 2020 11:32

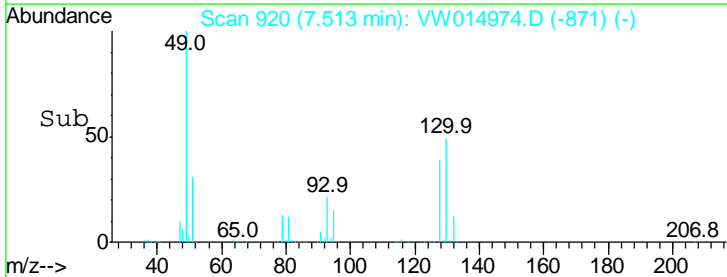
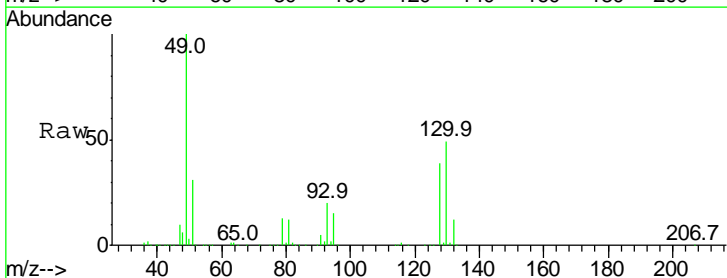
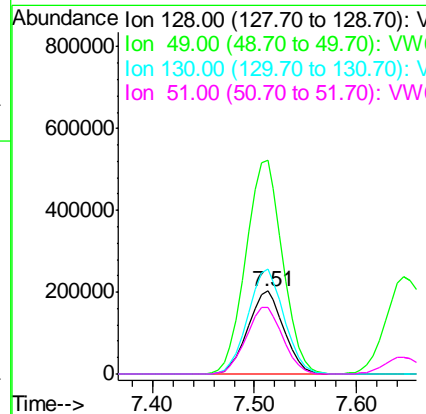
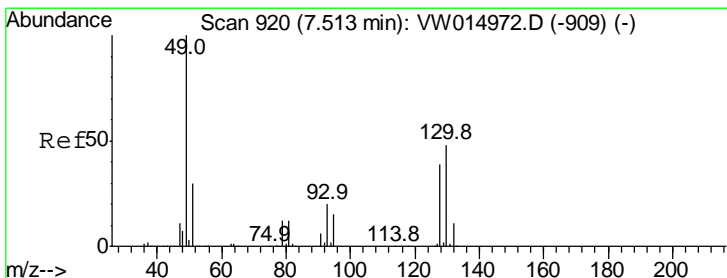
Instrument :  
 MSVOA\_W  
 ClientSampled :  
 VSTD100305

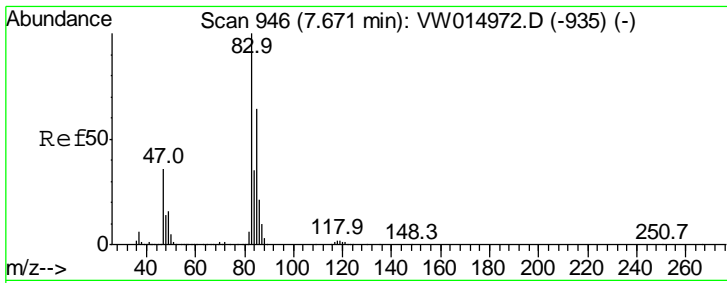
Tgt Ion: 43 Resp: 1239321  
 Ion Ratio Lower Upper  
 43 100  
 72 21.6 11.1 33.1



#23  
 Bromochloromethane  
 Concen: 89.895 ug/L  
 RT: 7.51 min Scan# 920  
 Delta R.T. -0.00 min  
 Lab File: VW014974.D  
 Acq: 13 Feb 2020 11:32

Tgt Ion: 128 Resp: 497459  
 Ion Ratio Lower Upper  
 128 100  
 49 257.8 179.0 332.4  
 130 126.9 85.5 158.7  
 51 80.7 61.7 92.5



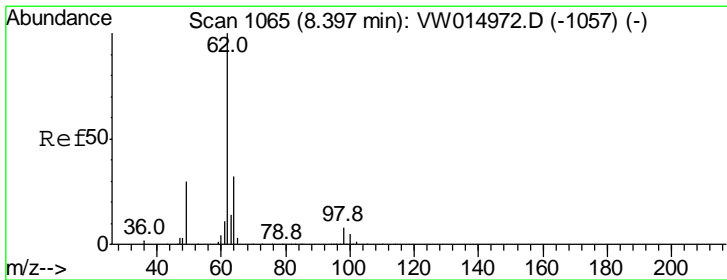
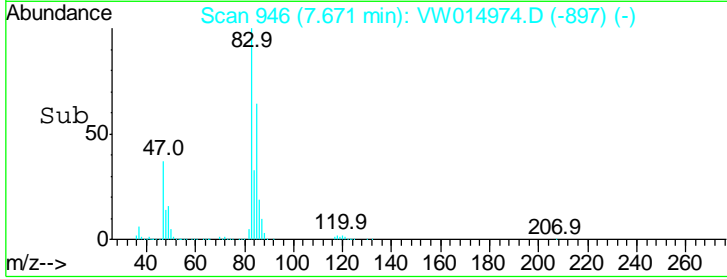
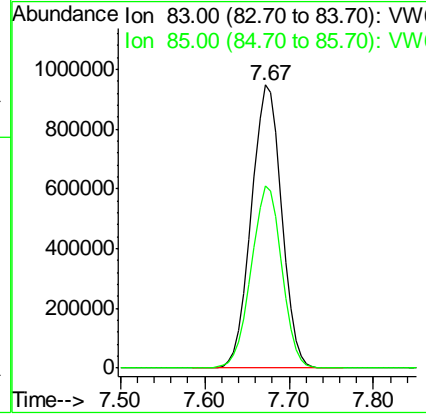
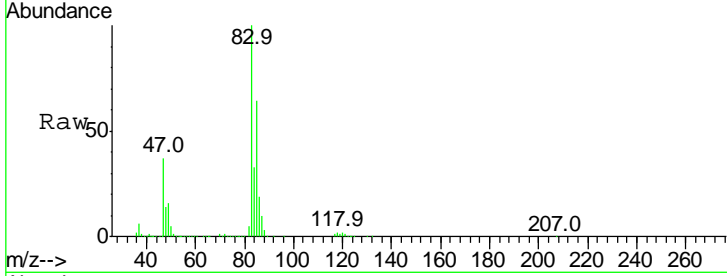


#25  
 Chloroform  
 Concen: 119.952 ug/L  
 RT: 7.67 min Scan# 946  
 Delta R.T. -0.00 min  
 Lab File: VW014974.D  
 Acq: 13 Feb 2020 11:32

**Instrument :**  
 MSVOA\_W  
**ClientSampled :**  
 VSTD100305

Tgt Ion: 83 Resp: 2309443

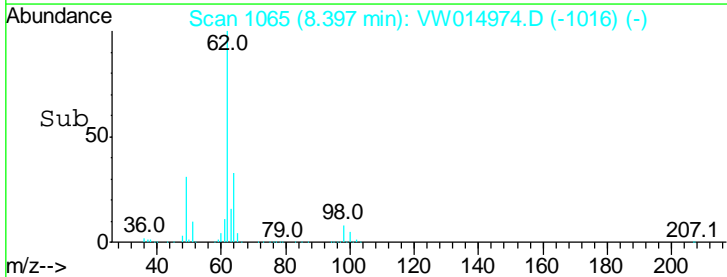
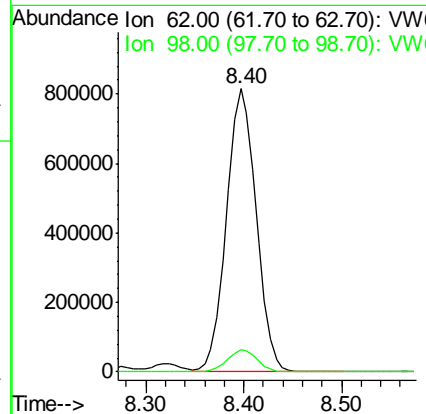
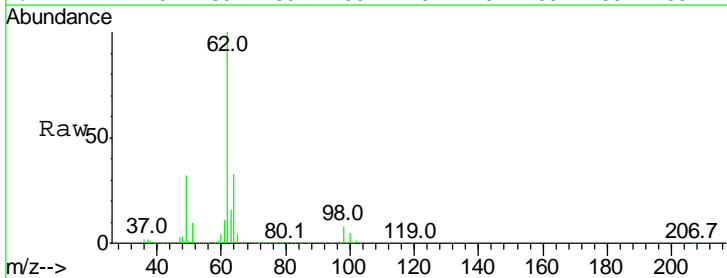
Ion	Ratio	Lower	Upper
83	100		
85	64.2	45.1	83.7

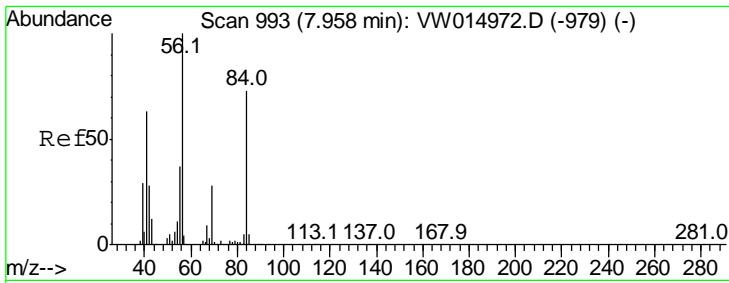


#27  
 1,2-Dichloroethane  
 Concen: 126.012 ug/L  
 RT: 8.40 min Scan# 1065  
 Delta R.T. -0.00 min  
 Lab File: VW014974.D  
 Acq: 13 Feb 2020 11:32

Tgt Ion: 62 Resp: 1720199

Ion	Ratio	Lower	Upper
62	100		
98	8.0	6.2	9.4

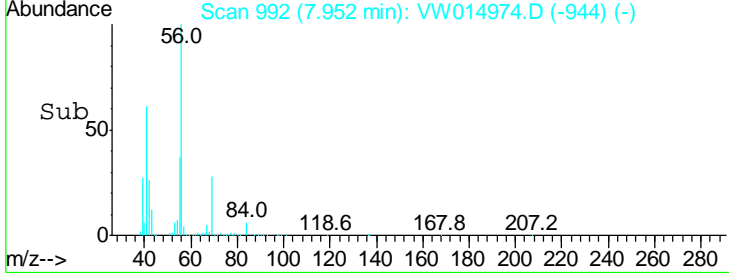
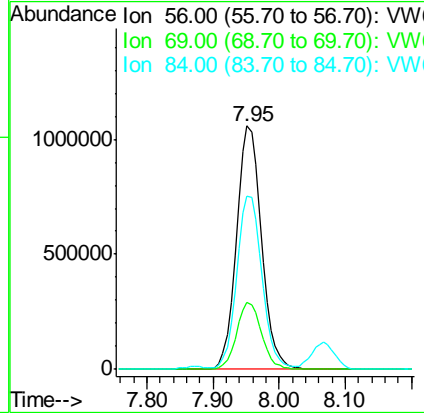
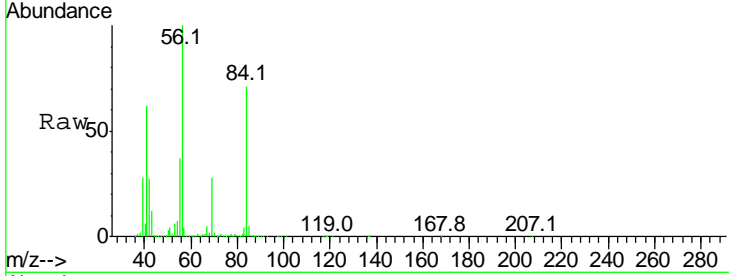




#29  
 Cyclohexane  
 Concen: 131.578 ug/L  
 RT: 7.95 min Scan# 992  
 Delta R.T. -0.01 min  
 Lab File: VW014974.D  
 Acq: 13 Feb 2020 11:32

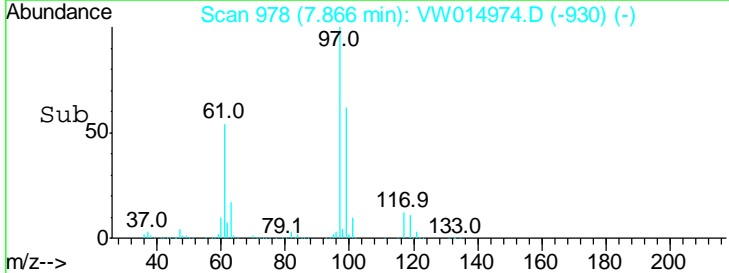
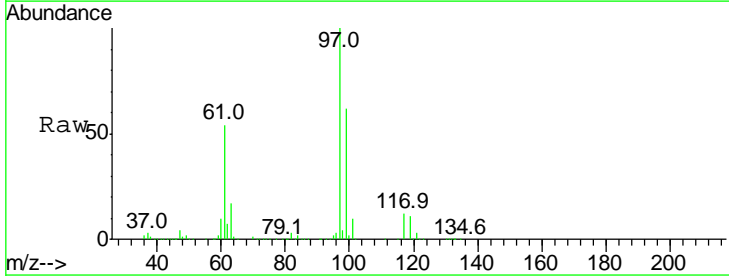
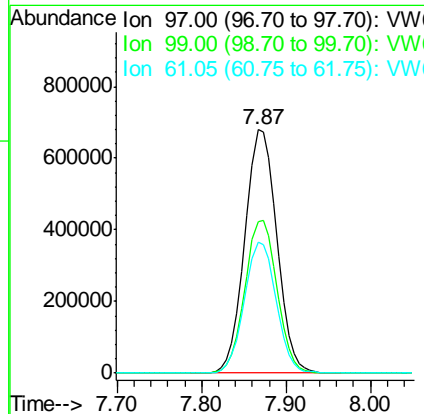
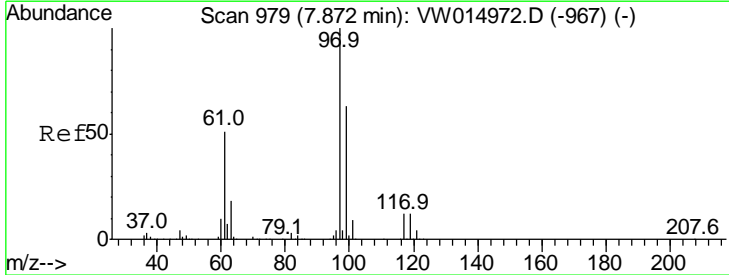
**Instrument :**  
 MSVOA\_W  
**ClientSampled :**  
 VSTD100305

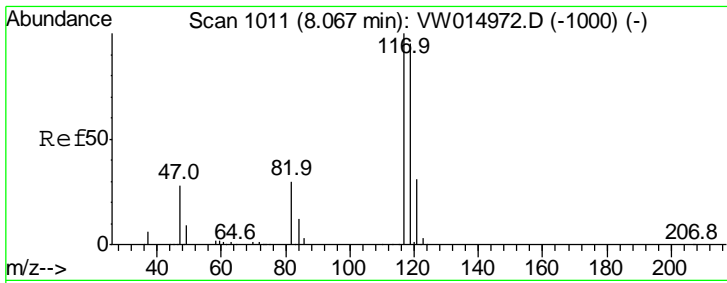
Tgt Ion	Resp	Lower	Upper
56	100		
69	27.4	22.0	33.0
84	71.8	57.8	86.6



#30  
 1,1,1-Trichloroethane  
 Concen: 103.359 ug/L  
 RT: 7.87 min Scan# 978  
 Delta R.T. -0.01 min  
 Lab File: VW014974.D  
 Acq: 13 Feb 2020 11:32

Tgt Ion	Resp	Lower	Upper
97	100		
99	63.2	50.6	75.8
61	53.3	42.7	64.1

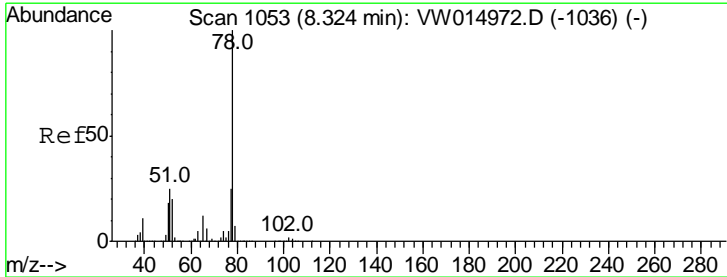
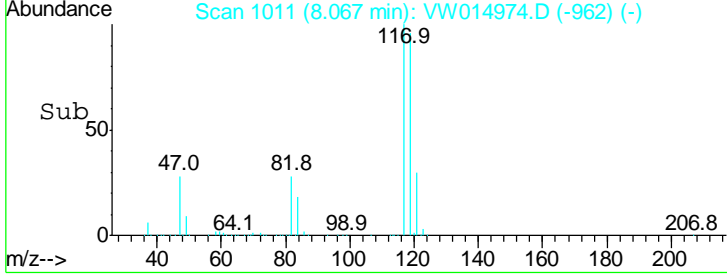
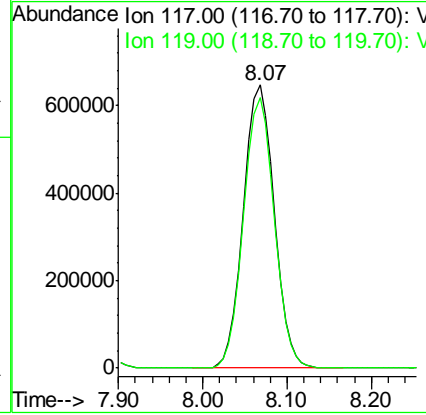
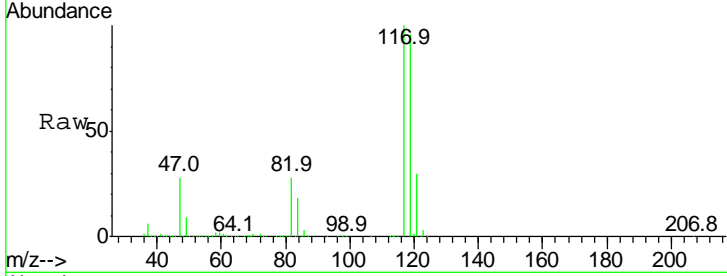




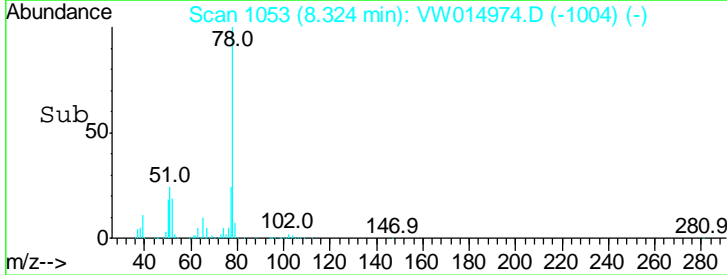
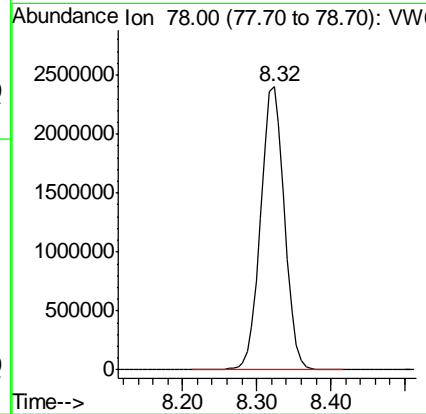
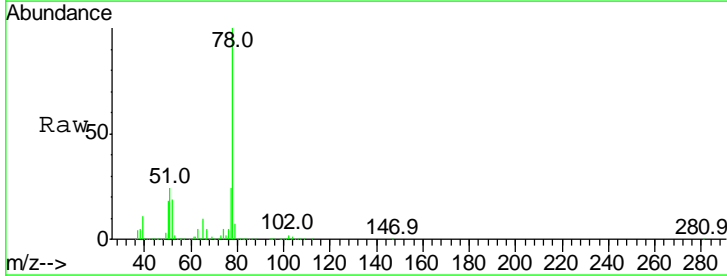
#31  
 Carbon tetrachloride  
 Concen: 107.441 ug/L  
 RT: 8.07 min Scan# 1011  
 Delta R.T. -0.00 min  
 Lab File: VW014974.D  
 Acq: 13 Feb 2020 11:32

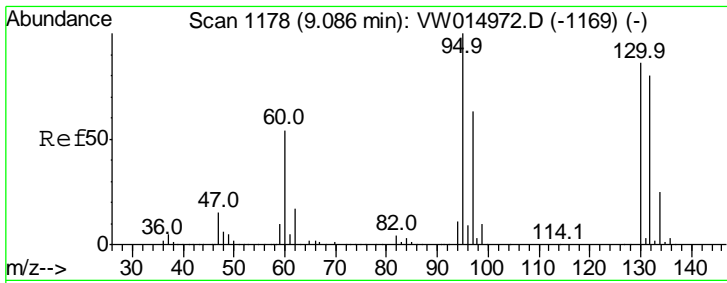
Instrument : MSVOA\_W  
 ClientSampled : VSTD100305

Tgt Ion: 117 Resp: 1602847  
 Ion Ratio Lower Upper  
 117 100  
 119 95.5 76.6 114.8



#33  
 Benzene  
 Concen: 112.328 ug/L  
 RT: 8.32 min Scan# 1053  
 Delta R.T. -0.00 min  
 Lab File: VW014974.D  
 Acq: 13 Feb 2020 11:32  
 Tgt Ion: 78 Resp: 5398630



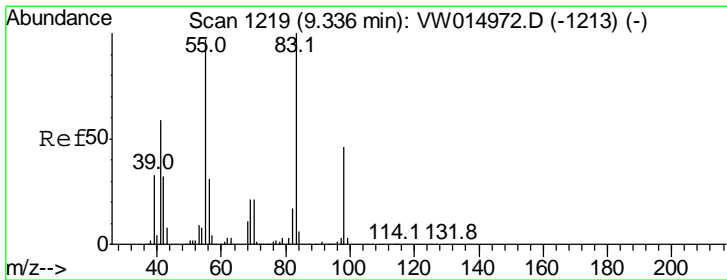
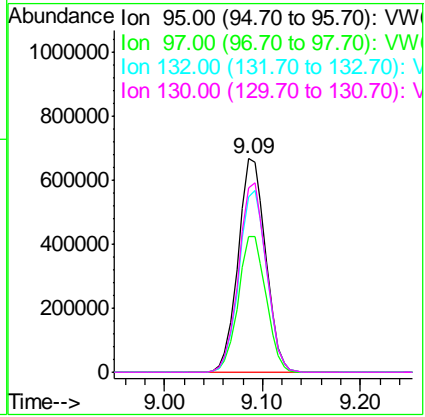
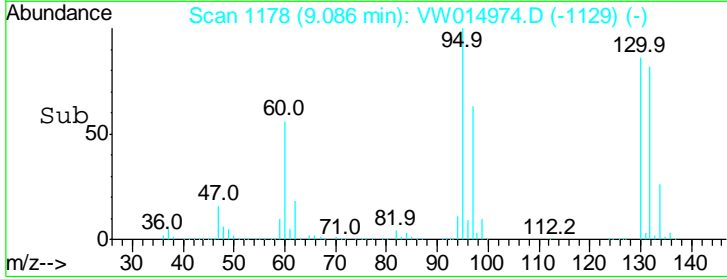
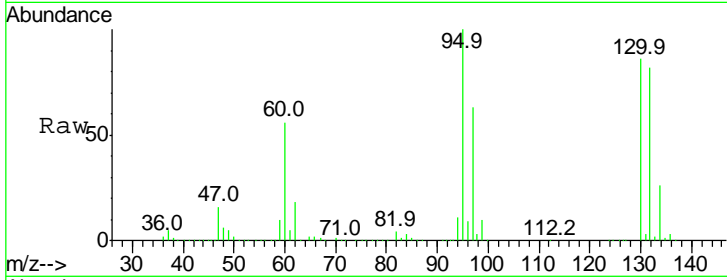


#34  
 Trichloroethene  
 Concen: 106.871 ug/L  
 RT: 9.09 min Scan# 1178  
 Delta R.T. -0.00 min  
 Lab File: VW014974.D  
 Acq: 13 Feb 2020 11:32

Instrument :  
 MSVOA\_W  
 ClientSampled :  
 VSTD100305

Tgt Ion: 95 Resp: 1310739

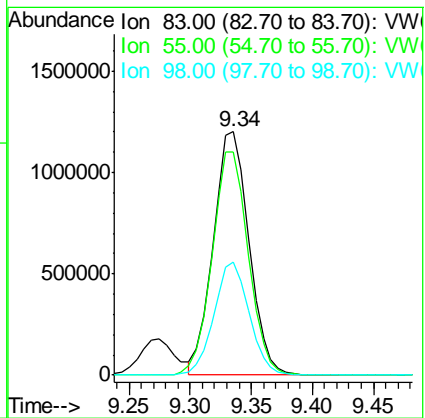
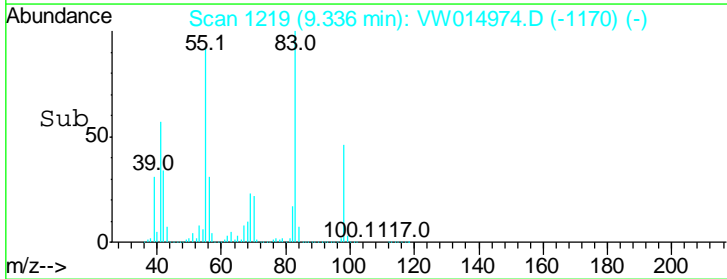
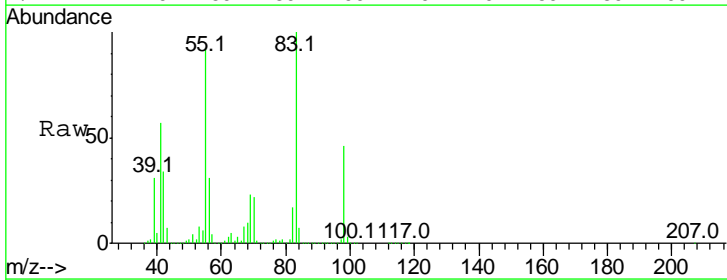
Ion	Ratio	Lower	Upper
95	100		
97	63.3	44.2	82.0
132	82.3	56.1	104.3
130	86.2	60.1	111.7



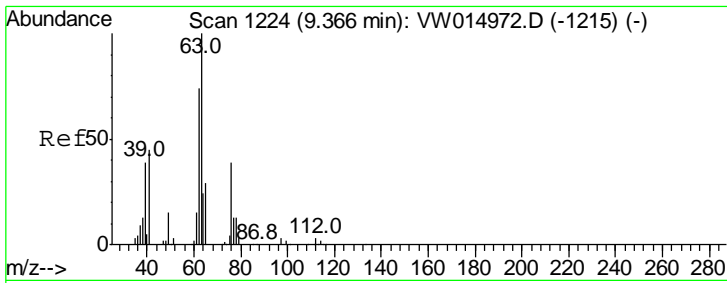
#35  
 Methylcyclohexane  
 Concen: 108.079 ug/L  
 RT: 9.34 min Scan# 1219  
 Delta R.T. -0.00 min  
 Lab File: VW014974.D  
 Acq: 13 Feb 2020 11:32

Tgt Ion: 83 Resp: 2443095

Ion	Ratio	Lower	Upper
83	100		
55	92.9	76.3	114.5
98	45.7	36.4	54.6





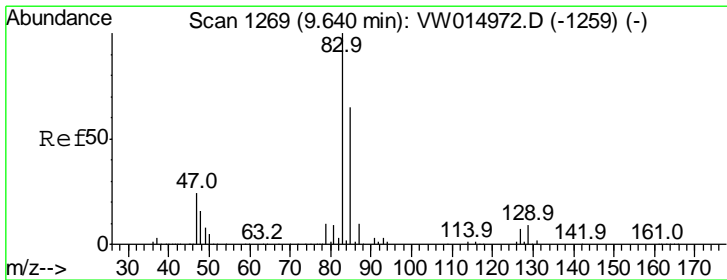
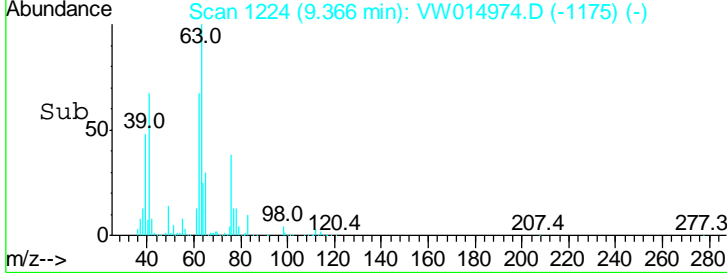
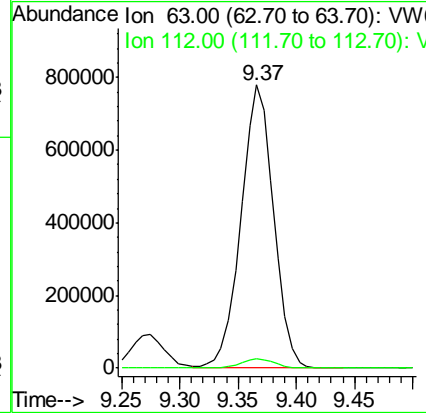
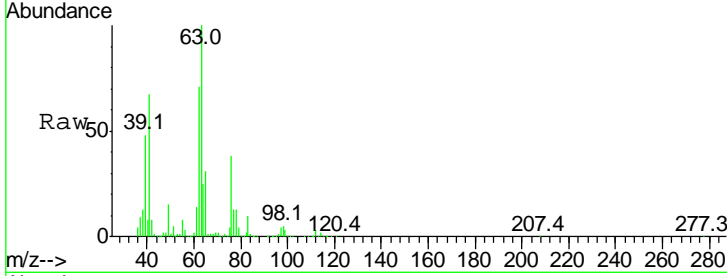


#37  
 1,2-Dichloropropane  
 Concen: 125.157 ug/L  
 RT: 9.37 min Scan# 1224  
 Delta R.T. -0.00 min  
 Lab File: VW014974.D  
 Acq: 13 Feb 2020 11:32

Instrument : MSVOA\_W  
 ClientSampled : VSTD100305

Tgt Ion: 63 Resp: 1515568

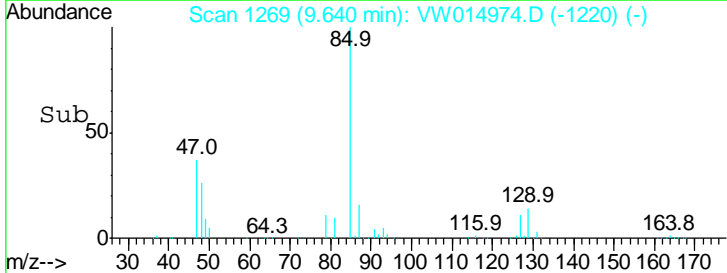
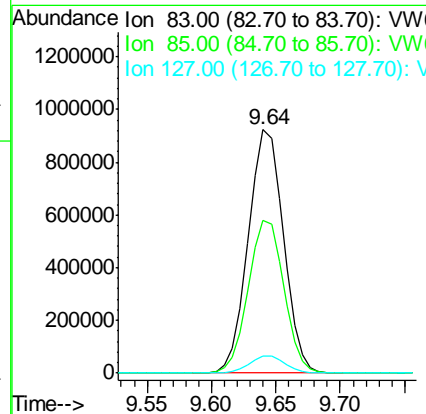
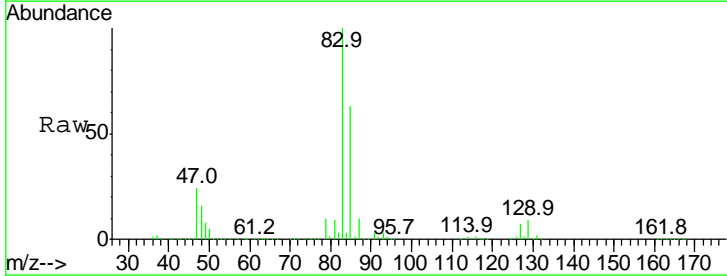
Ion	Ratio	Lower	Upper
63	100		
112	3.3	2.6	4.0

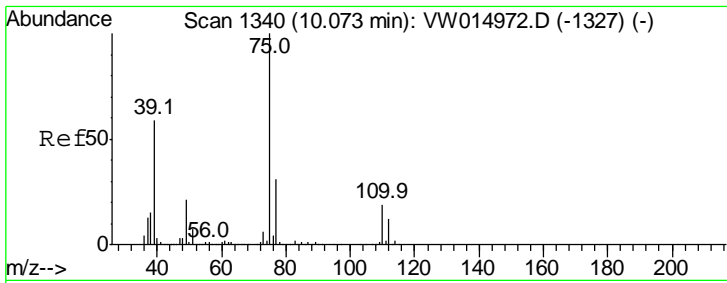


#38  
 Bromodichloromethane  
 Concen: 112.389 ug/L  
 RT: 9.64 min Scan# 1269  
 Delta R.T. -0.00 min  
 Lab File: VW014974.D  
 Acq: 13 Feb 2020 11:32

Tgt Ion: 83 Resp: 1742205

Ion	Ratio	Lower	Upper
83	100		
85	62.9	45.2	84.0
127	6.8	5.5	8.3

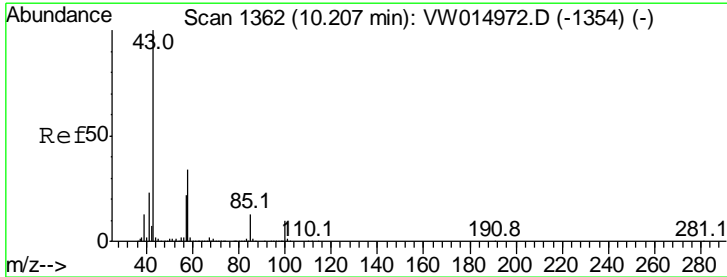
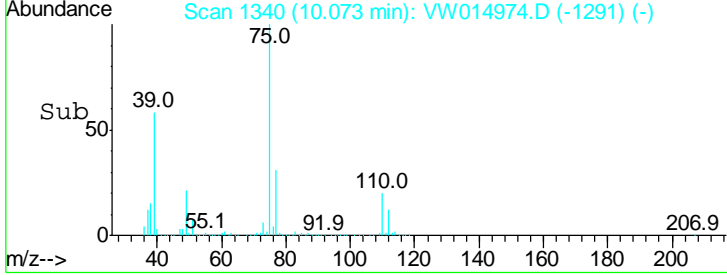
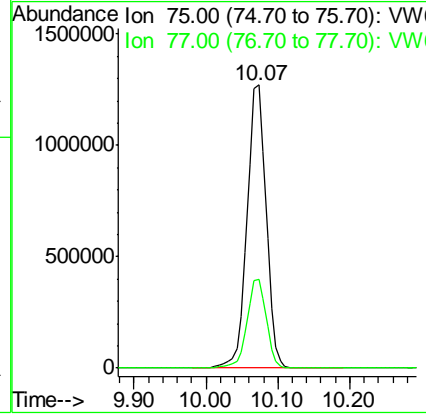
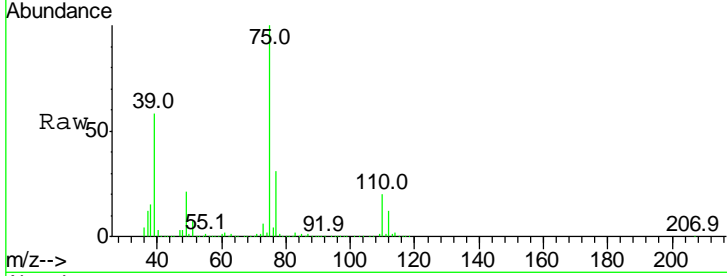




#39  
 cis-1,3-Dichloropropene  
 Concen: 113.930 ug/L  
 RT: 10.07 min Scan# 1340  
 Delta R.T. -0.00 min  
 Lab File: VW014974.D  
 Acq: 13 Feb 2020 11:32

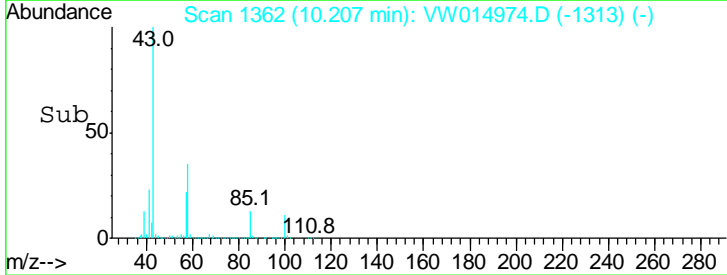
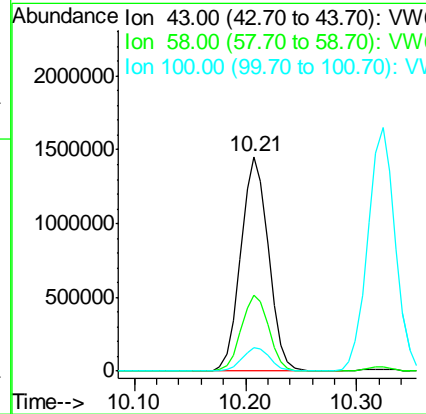
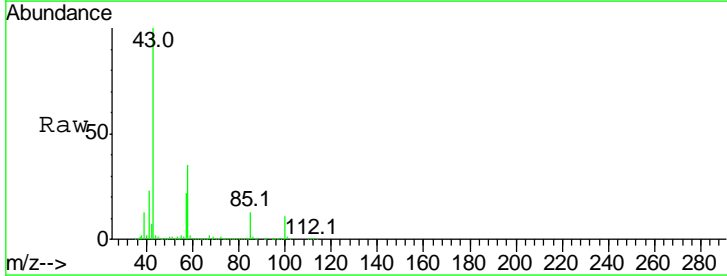
Instrument :  
 MSVOA\_W  
 ClientSampleId :  
 VSTD100305

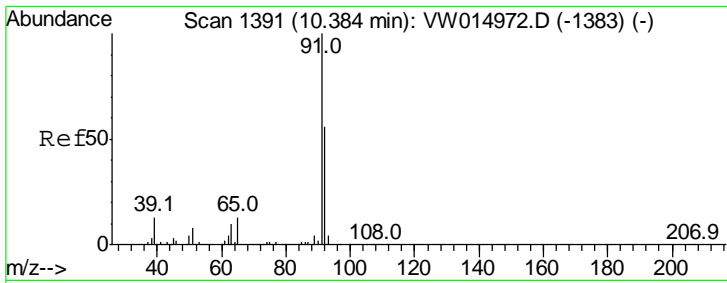
Tgt Ion: 75 Resp: 2336911  
 Ion Ratio Lower Upper  
 75 100  
 77 31.3 21.6 40.2



#40  
 4-Methyl-2-pentanone  
 Concen: 189.506 ug/L  
 RT: 10.21 min Scan# 1362  
 Delta R.T. -0.00 min  
 Lab File: VW014974.D  
 Acq: 13 Feb 2020 11:32

Tgt Ion: 43 Resp: 2491430  
 Ion Ratio Lower Upper  
 43 100  
 58 35.4 27.7 41.5  
 100 11.0 8.6 13.0

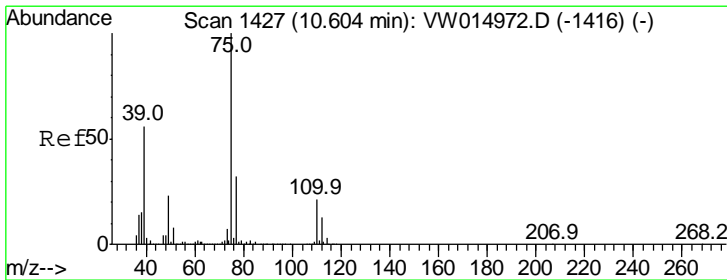
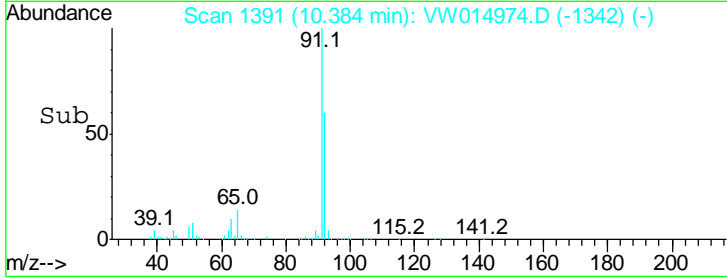
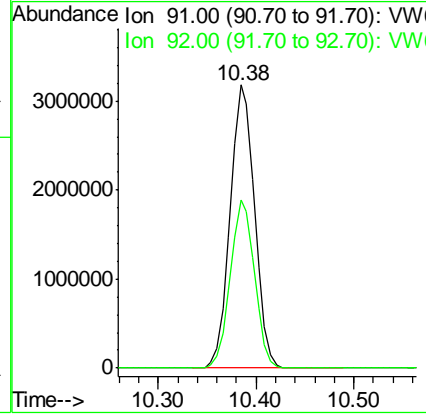
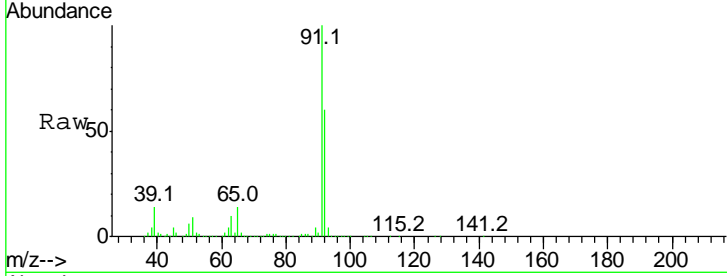




#42  
 Toluene  
 Concen: 105.781 ug/L  
 RT: 10.38 min Scan# 1391  
 Delta R.T. -0.00 min  
 Lab File: VW014974.D  
 Acq: 13 Feb 2020 11:32

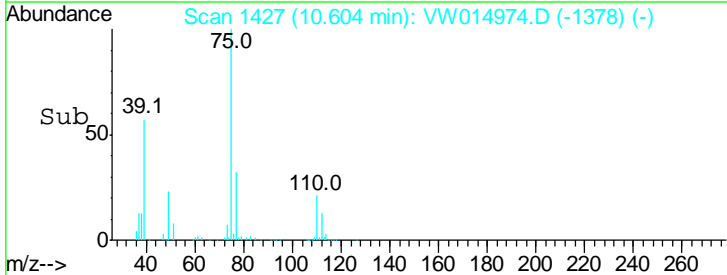
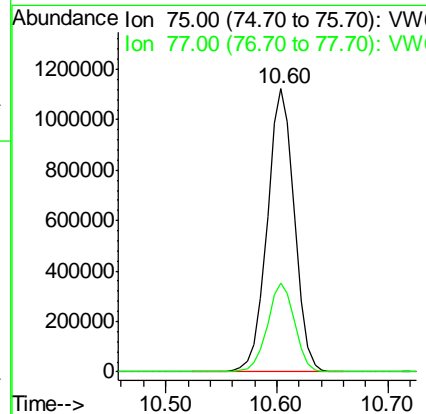
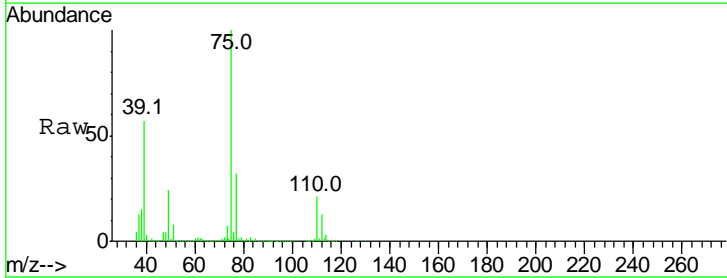
Instrument :  
 MSVOA\_W  
 ClientSampled :  
 VSTD100305

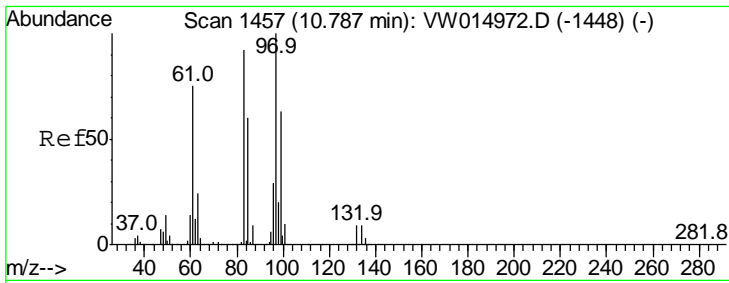
Tgt Ion: 91 Resp: 5504476  
 Ion Ratio Lower Upper  
 91 100  
 92 59.5 39.5 73.3



#44  
 trans-1,3-Dichloropropene  
 Concen: 109.352 ug/L  
 RT: 10.60 min Scan# 1427  
 Delta R.T. -0.00 min  
 Lab File: VW014974.D  
 Acq: 13 Feb 2020 11:32

Tgt Ion: 75 Resp: 1908232  
 Ion Ratio Lower Upper  
 75 100  
 77 31.6 22.7 42.1

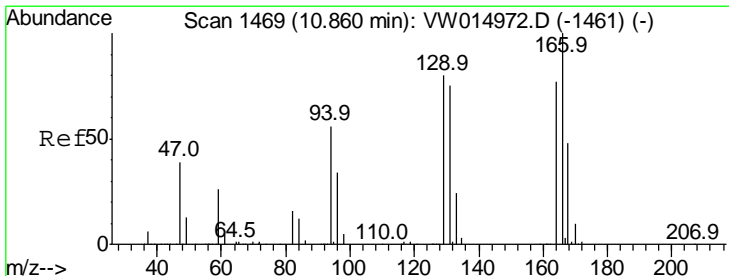
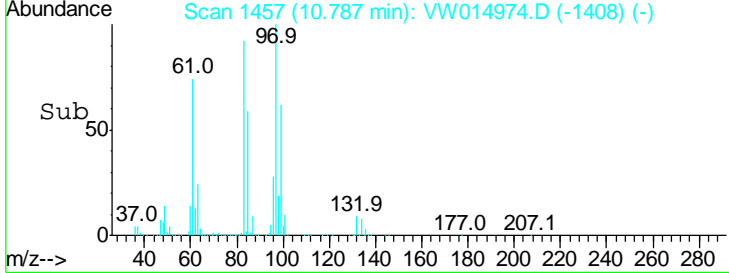
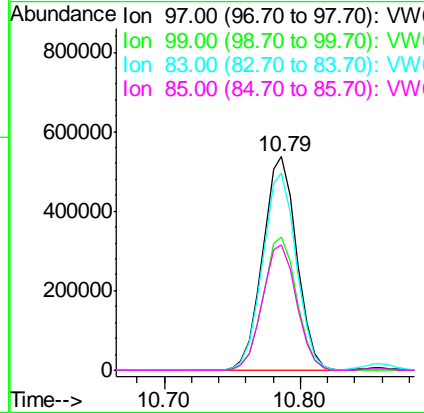
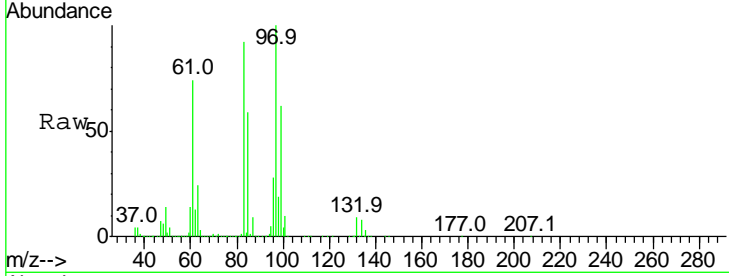




#45  
 1,1,2-Trichloroethane  
 Concen: 90.112 ug/L  
 RT: 10.79 min Scan# 1457  
 Delta R.T. -0.00 min  
 Lab File: VW014974.D  
 Acq: 13 Feb 2020 11:32

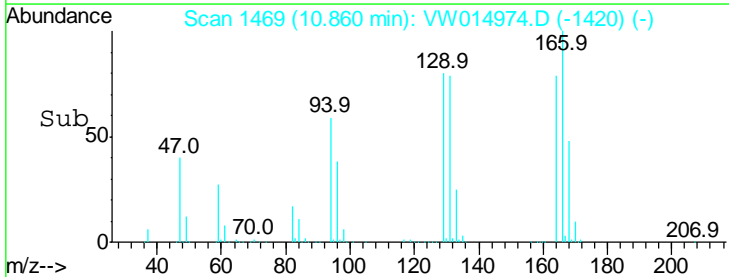
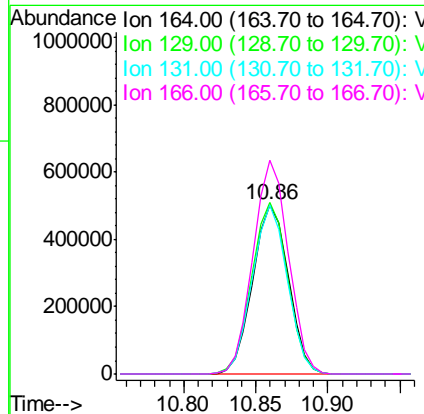
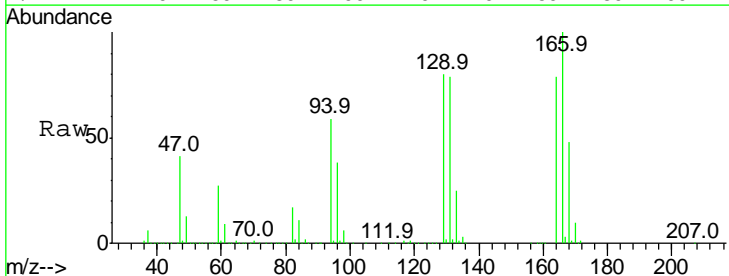
Instrument : MSVOA\_W  
 ClientSampled : VSTD100305

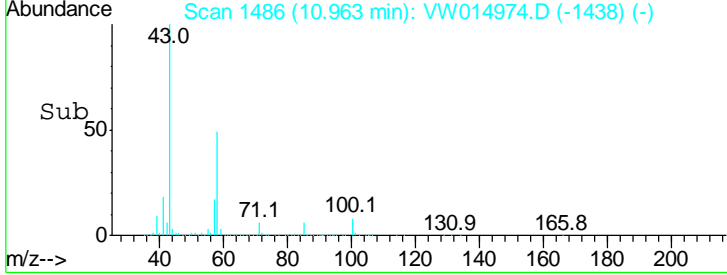
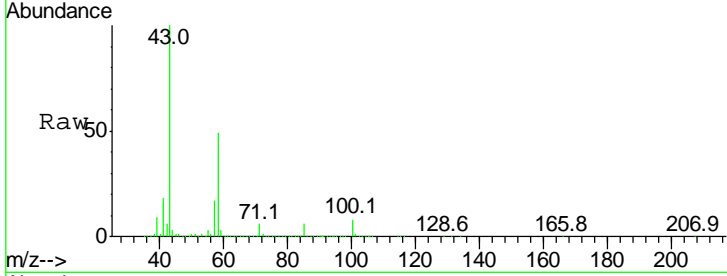
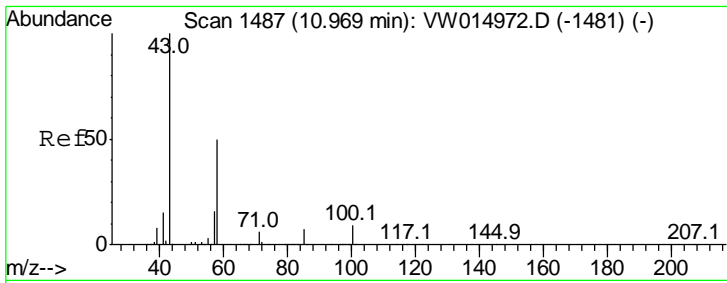
Tgt Ion	Resp	Lower	Upper
97	100		
99	62.4	44.2	82.0
83	92.4	64.1	119.1
85	58.6	42.1	78.1



#46  
 Tetrachloroethene  
 Concen: 91.353 ug/L  
 RT: 10.86 min Scan# 1469  
 Delta R.T. -0.00 min  
 Lab File: VW014974.D  
 Acq: 13 Feb 2020 11:32

Tgt Ion	Resp	Lower	Upper
164	100		
129	100.9	72.2	134.2
131	99.6	68.1	126.5
166	126.1	90.6	168.2



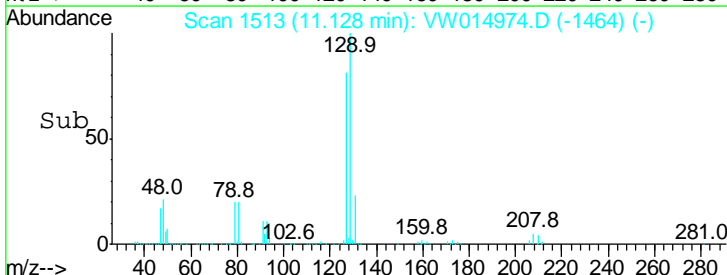
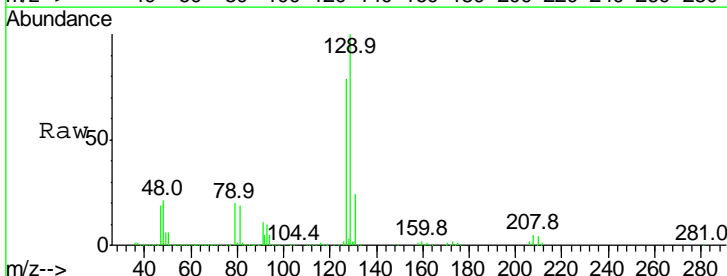
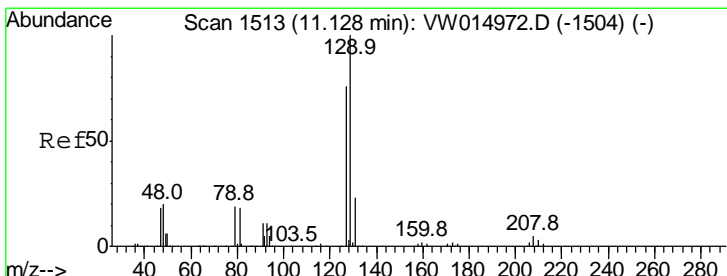
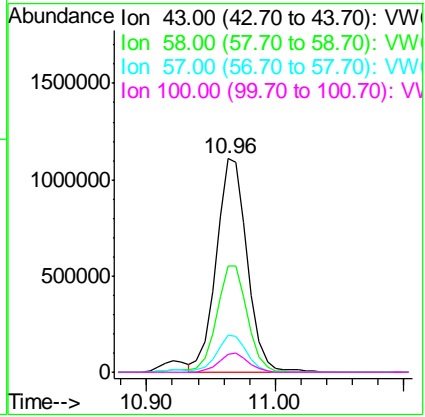


#48  
 2-Hexanone  
 Concen: 185.447 ug/L  
 RT: 10.96 min Scan# 1486  
 Delta R.T. -0.01 min  
 Lab File: VW014974.D  
 Acq: 13 Feb 2020 11:32

Instrument : MSVOA\_W  
 ClientSampled : VSTD100305

Tgt Ion: 43 Resp: 1870034

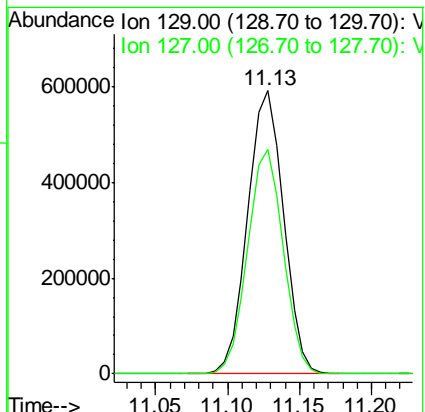
Ion	Ratio	Lower	Upper
43	100		
58	49.2	39.2	58.8
57	16.9	13.1	19.7
100	8.5	7.0	10.4

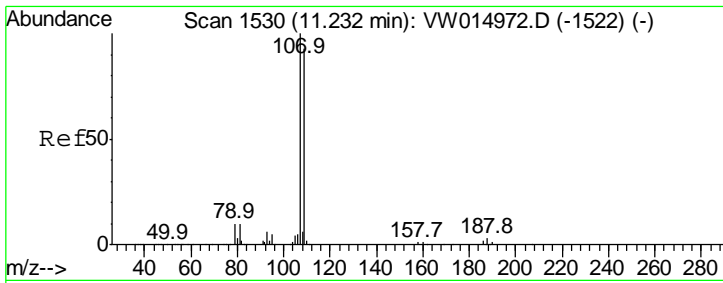


#49  
 Dibromochloromethane  
 Concen: 90.472 ug/L  
 RT: 11.13 min Scan# 1513  
 Delta R.T. -0.00 min  
 Lab File: VW014974.D  
 Acq: 13 Feb 2020 11:32

Tgt Ion: 129 Resp: 1019918

Ion	Ratio	Lower	Upper
129	100		
127	79.4	53.0	98.4

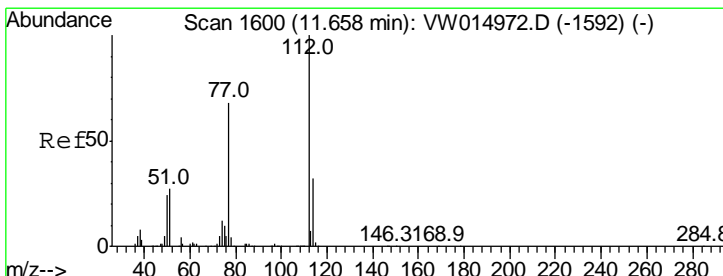
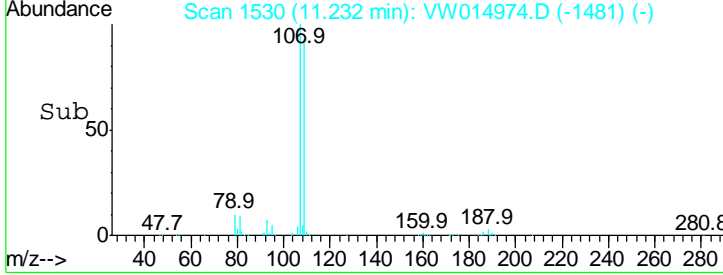
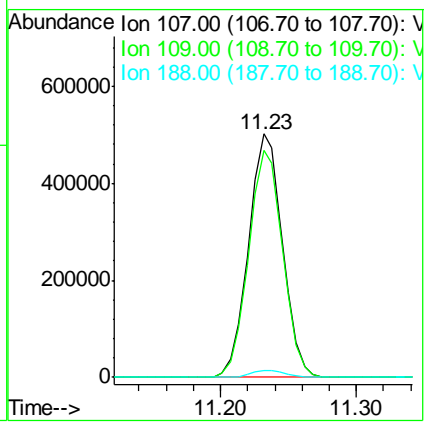
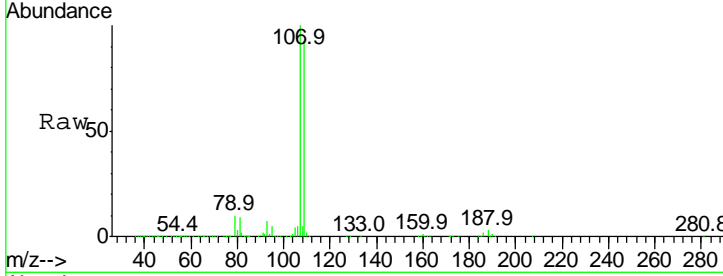




#50  
 1,2-Dibromoethane  
 Concen: 83.148 ug/L  
 RT: 11.23 min Scan# 1530  
 Delta R.T. -0.00 min  
 Lab File: VW014974.D  
 Acq: 13 Feb 2020 11:32

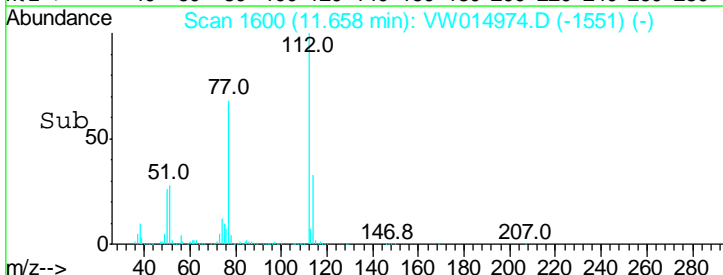
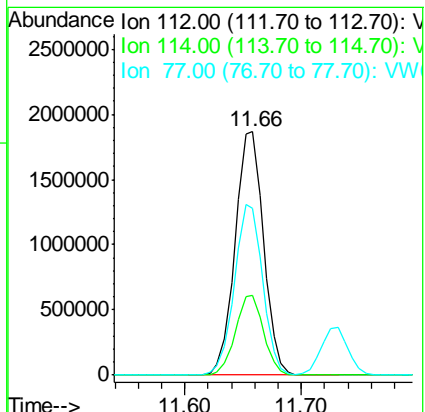
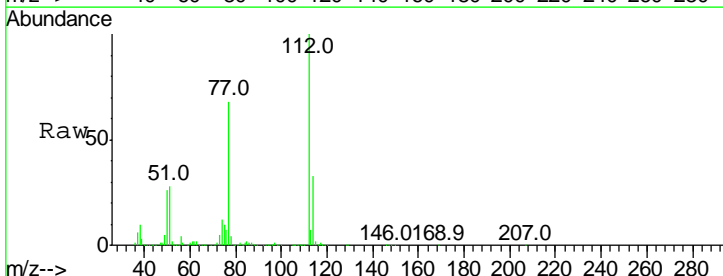
Instrument : MSVOA\_W  
 ClientSampled : VSTD100305

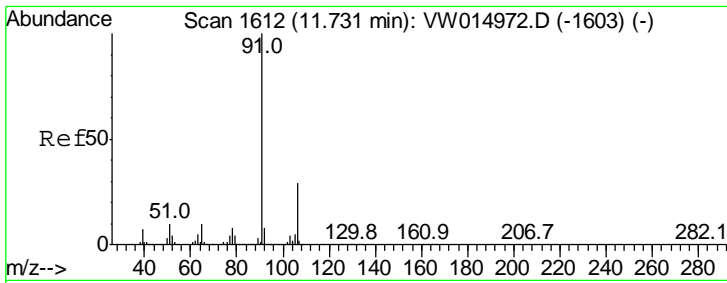
Tgt Ion	Resp	Lower	Upper
107	100		
109	93.2	65.1	120.9
188	2.8	2.4	3.6



#51  
 Chlorobenzene  
 Concen: 96.427 ug/L  
 RT: 11.66 min Scan# 1600  
 Delta R.T. -0.00 min  
 Lab File: VW014974.D  
 Acq: 13 Feb 2020 11:32

Tgt Ion	Resp	Lower	Upper
112	100		
114	32.6	22.6	42.0
77	68.3	54.6	82.0

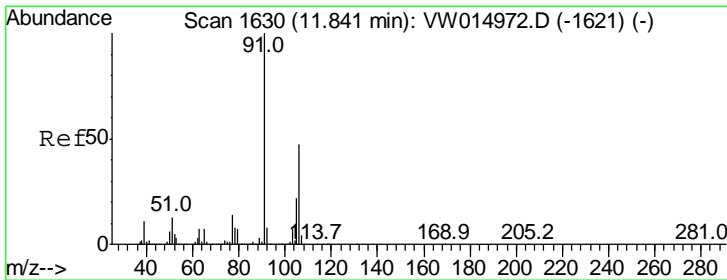
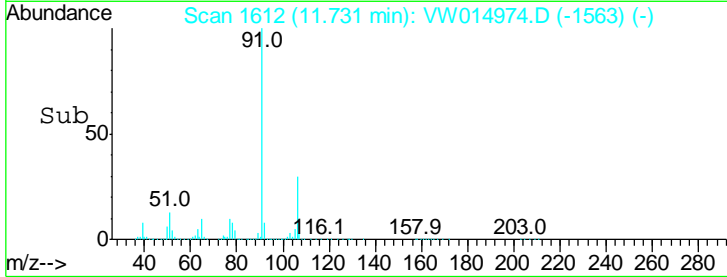
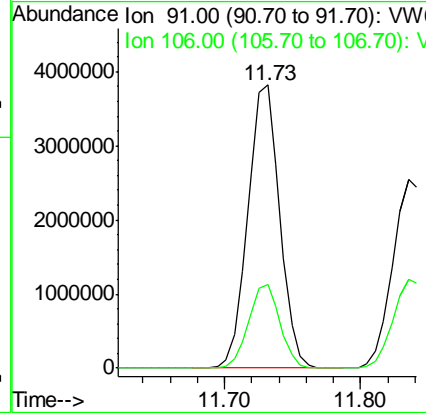
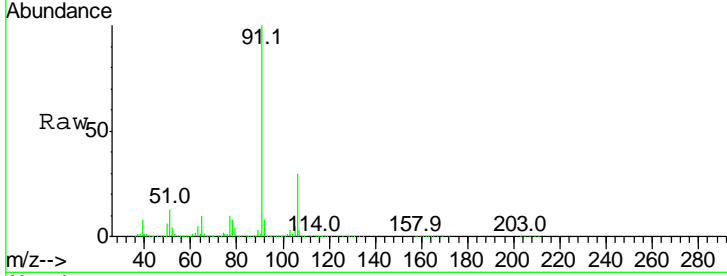




#52  
 Ethylbenzene  
 Concen: 107.074 ug/L  
 RT: 11.73 min Scan# 1612  
 Delta R.T. -0.00 min  
 Lab File: VW014974.D  
 Acq: 13 Feb 2020 11:32

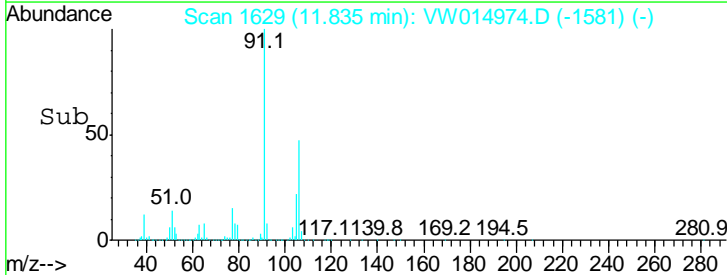
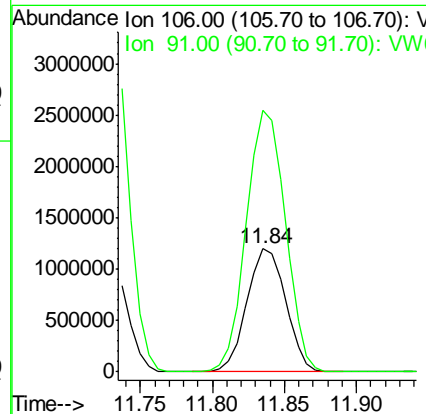
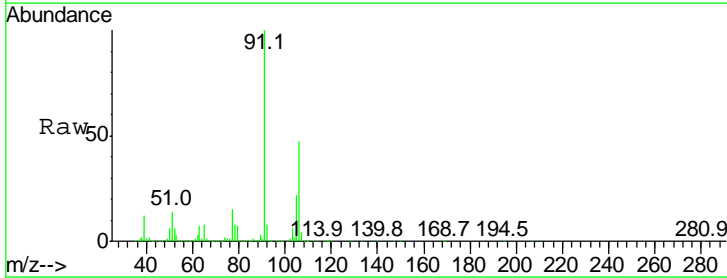
Instrument :  
 MSVOA\_W  
 ClientSampled :  
 VSTD100305

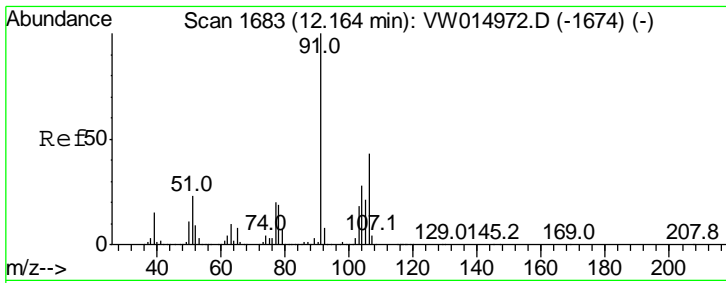
Tgt Ion: 91 Resp: 6246300  
 Ion Ratio Lower Upper  
 91 100  
 106 29.7 20.2 37.4



#53  
 m,p-Xylene  
 Concen: 98.701 ug/L  
 RT: 11.84 min Scan# 1629  
 Delta R.T. -0.01 min  
 Lab File: VW014974.D  
 Acq: 13 Feb 2020 11:32

Tgt Ion: 106 Resp: 2237158  
 Ion Ratio Lower Upper  
 106 100  
 91 212.4 149.2 277.2

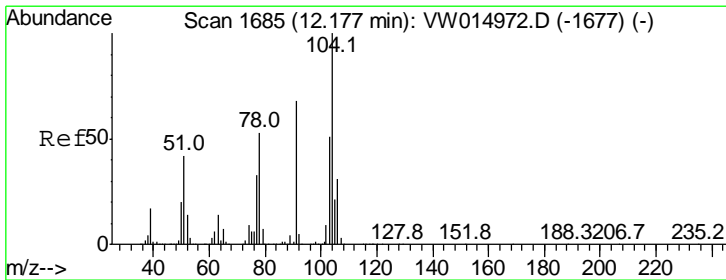
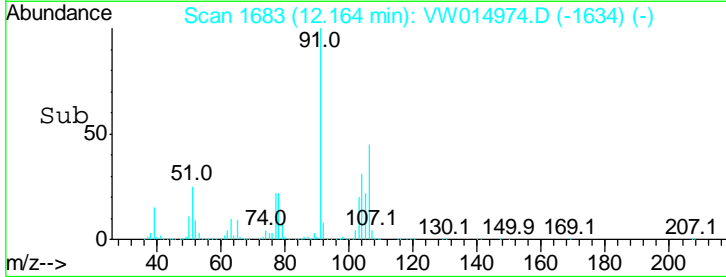
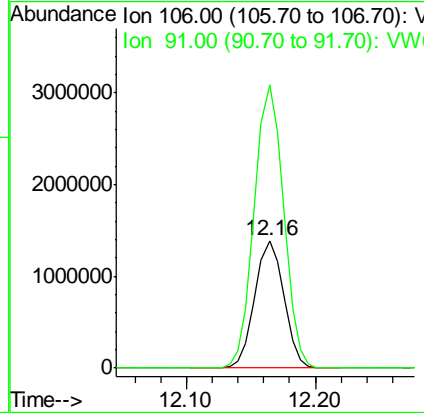
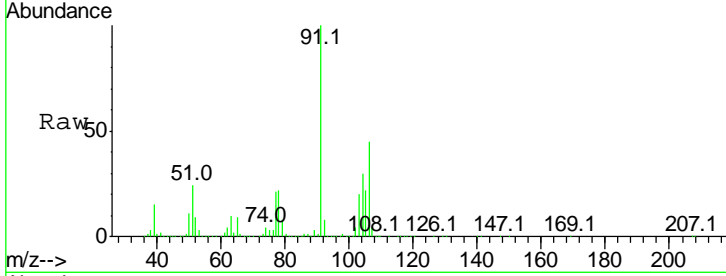




#54  
 o-Xylene  
 Concen: 99.756 ug/L  
 RT: 12.16 min Scan# 1683  
 Delta R.T. -0.00 min  
 Lab File: VW014974.D  
 Acq: 13 Feb 2020 11:32

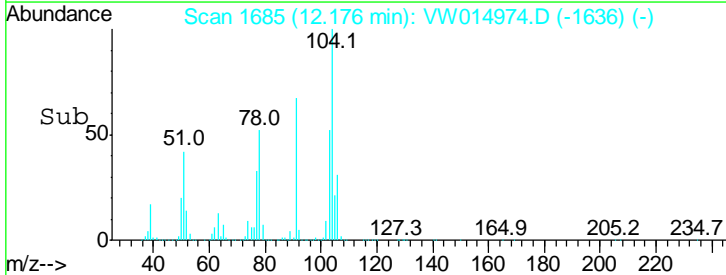
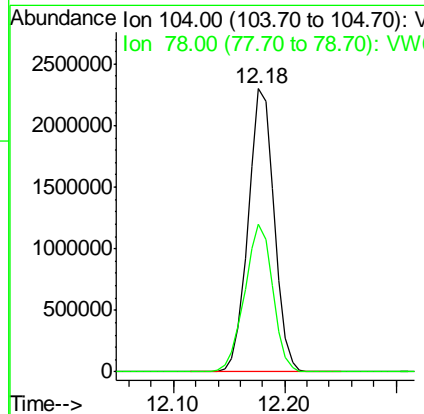
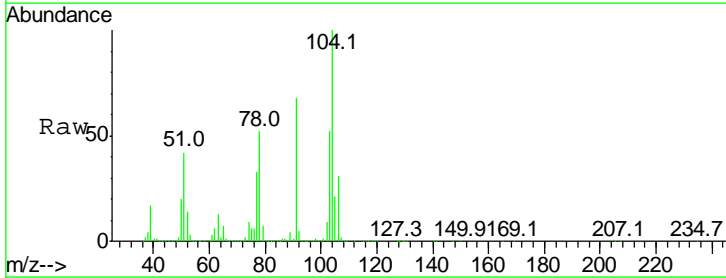
Instrument :  
 MSVOA\_W  
 ClientSampled :  
 VSTD100305

Tgt Ion:106 Resp: 2166295  
 Ion Ratio Lower Upper  
 106 100  
 91 222.4 163.7 304.1

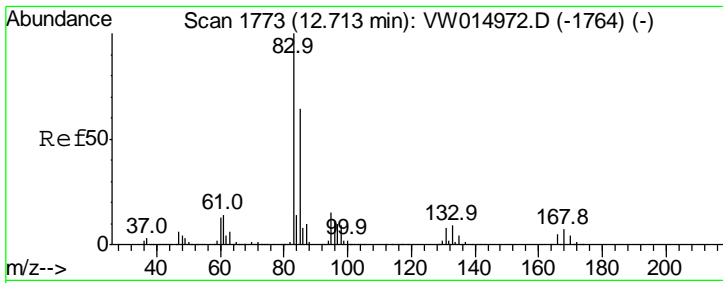


#55  
 Styrene  
 Concen: 98.107 ug/L  
 RT: 12.18 min Scan# 1685  
 Delta R.T. -0.00 min  
 Lab File: VW014974.D  
 Acq: 13 Feb 2020 11:32

Tgt Ion:104 Resp: 3729427  
 Ion Ratio Lower Upper  
 104 100  
 78 52.3 36.8 68.4



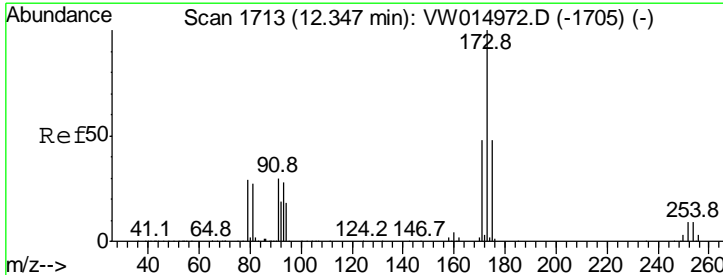
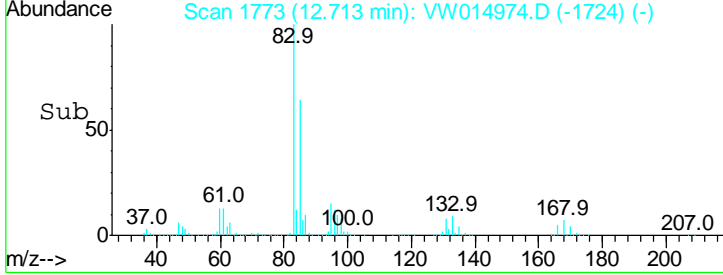
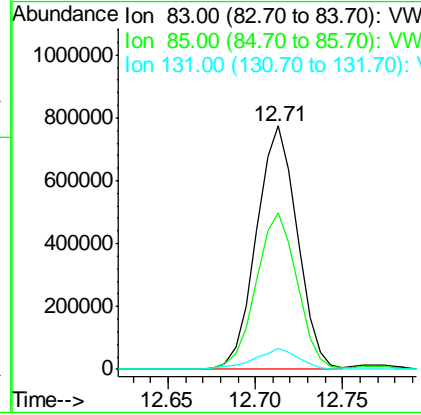
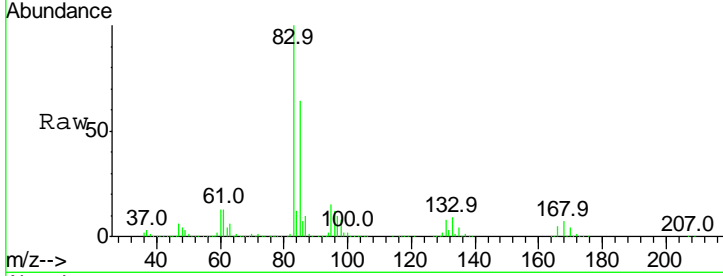




#57  
 1,1,2,2-Tetrachloroethane  
 Concen: 86.024 ug/L  
 RT: 12.71 min Scan# 1773  
 Delta R.T. 0.00 min  
 Lab File: VW014974.D  
 Acq: 13 Feb 2020 11:32

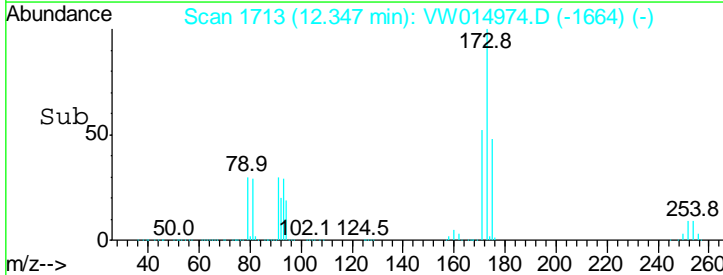
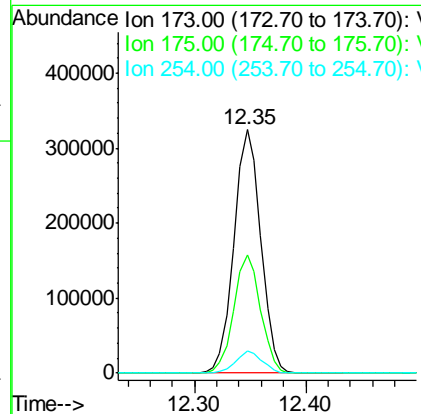
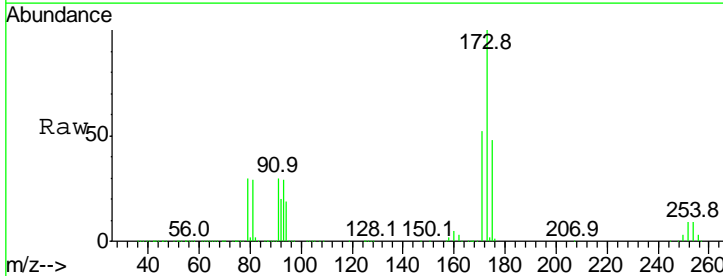
Instrument : MSVOA\_W  
 ClientSampled : VSTD100305

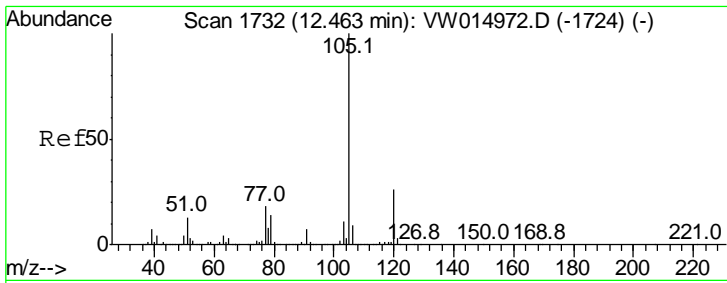
Tgt Ion	Resp	Lower	Upper
83	100		
85	64.5	44.9	83.5
131	8.4	6.2	9.2



#59  
 Bromoform  
 Concen: 76.566 ug/L  
 RT: 12.35 min Scan# 1713  
 Delta R.T. -0.00 min  
 Lab File: VW014974.D  
 Acq: 13 Feb 2020 11:32

Tgt Ion	Resp	Lower	Upper
173	100		
175	48.3	39.0	58.4
254	8.8	7.1	10.7

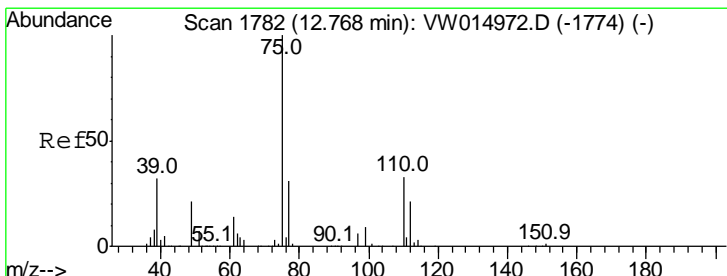
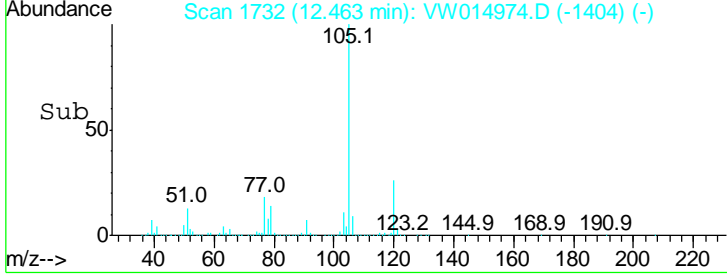
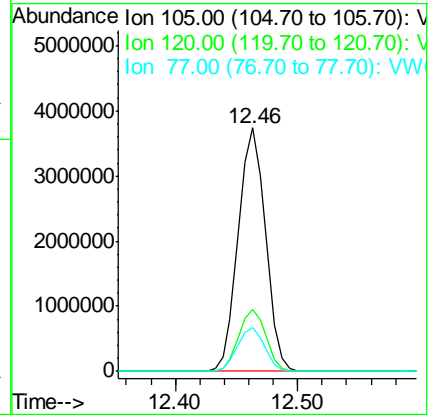
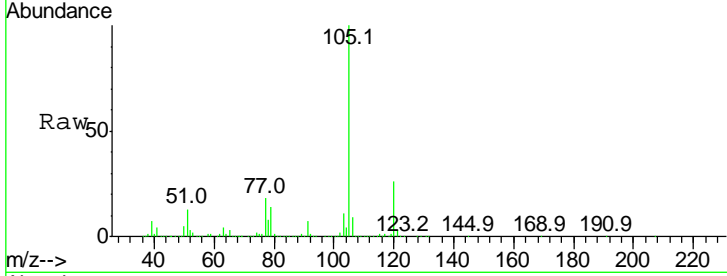




#60  
 Isopropylbenzene  
 Concen: 108.221 ug/L  
 RT: 12.46 min Scan# 1732  
 Delta R.T. -0.00 min  
 Lab File: VW014974.D  
 Acq: 13 Feb 2020 11:32

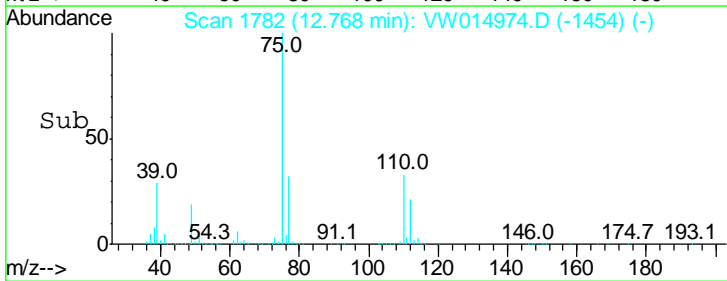
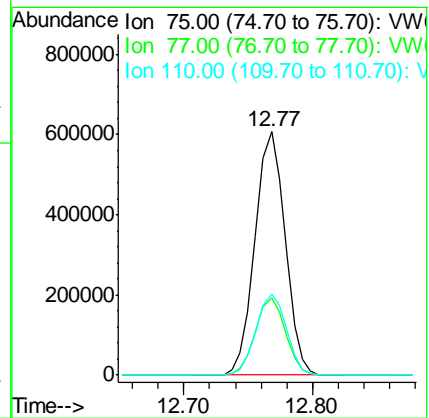
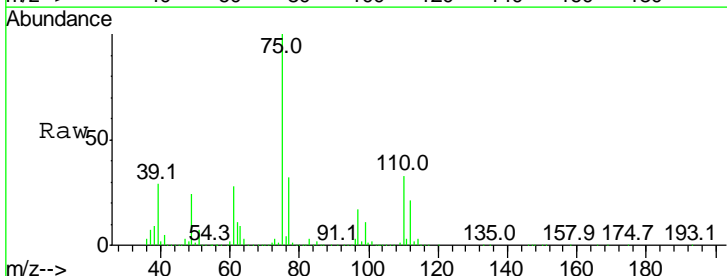
Instrument : MSVOA\_W  
 ClientSampled : VSTD100305

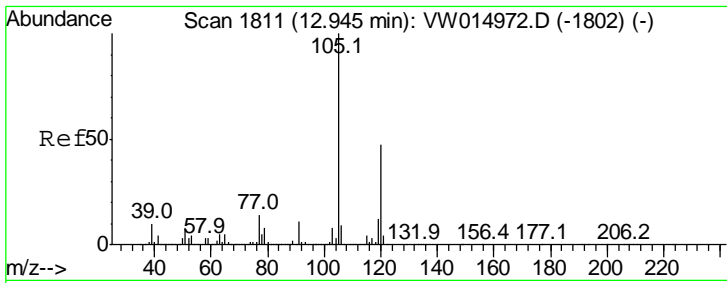
Tgt Ion	Resp	Lower	Upper
105	100		
120	25.6	20.1	30.1
77	18.1	14.4	21.6



#61  
 1,2,3-Trichloropropane  
 Concen: 94.341 ug/L  
 RT: 12.77 min Scan# 1782  
 Delta R.T. -0.00 min  
 Lab File: VW014974.D  
 Acq: 13 Feb 2020 11:32

Tgt Ion	Resp	Lower	Upper
75	100		
77	31.9	25.8	38.6
110	33.5	26.6	39.8

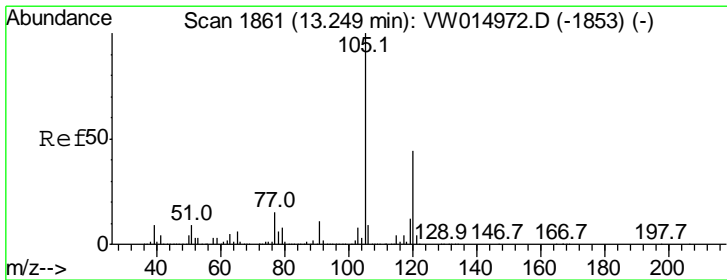
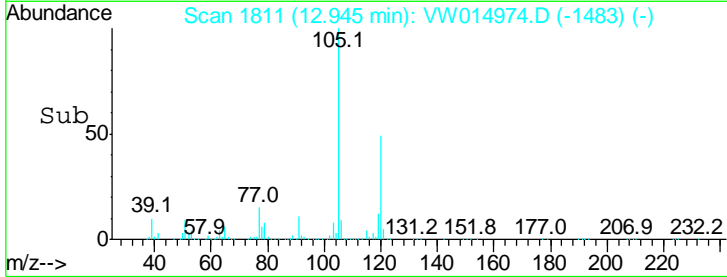
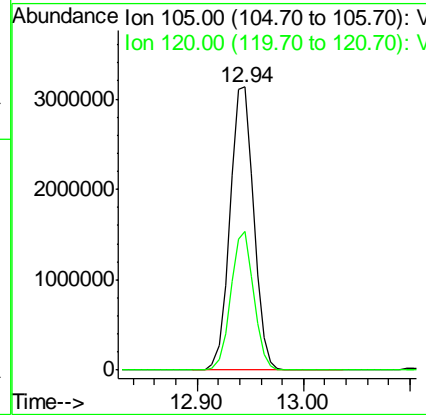
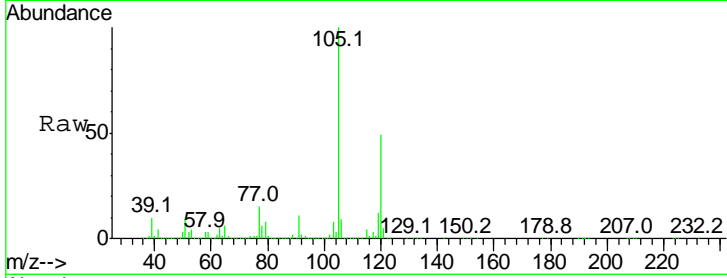




#62  
 1,3,5-Trimethylbenzene  
 Concen: 111.022 ug/L  
 RT: 12.94 min Scan# 1811  
 Delta R.T. 0.00 min  
 Lab File: VW014974.D  
 Acq: 13 Feb 2020 11:32

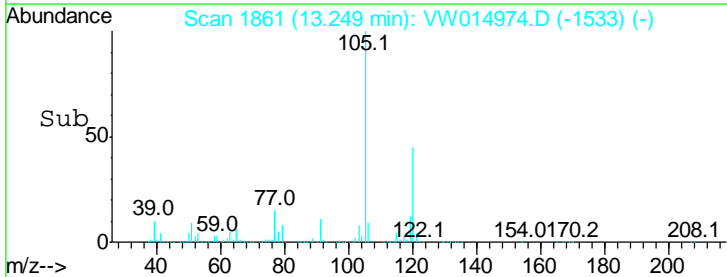
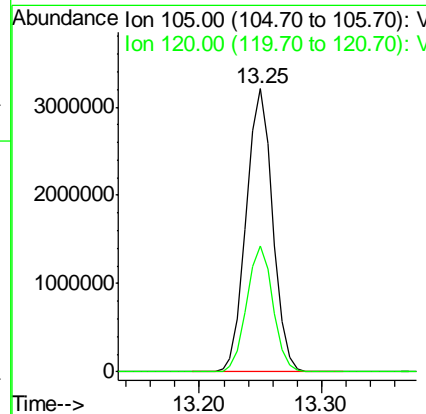
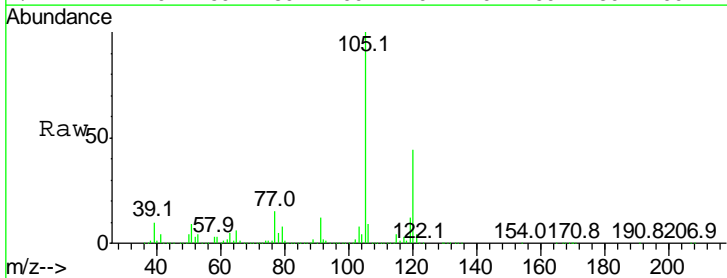
Instrument :  
 MSVOA\_W  
 ClientSampled :  
 VSTD100305

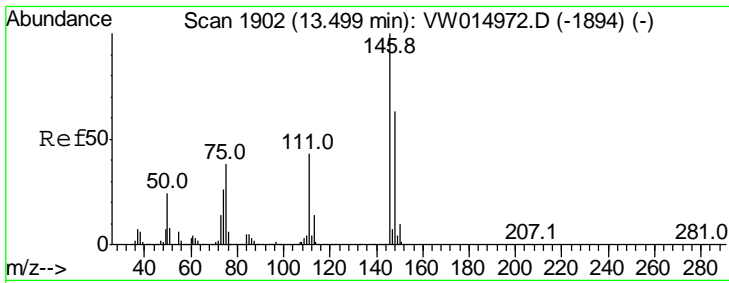
Tgt Ion:105 Resp: 4887818  
 Ion Ratio Lower Upper  
 105 100  
 120 47.2 37.4 56.0



#63  
 1,2,4-Trimethylbenzene  
 Concen: 110.408 ug/L  
 RT: 13.25 min Scan# 1861  
 Delta R.T. -0.00 min  
 Lab File: VW014974.D  
 Acq: 13 Feb 2020 11:32

Tgt Ion:105 Resp: 4809332  
 Ion Ratio Lower Upper  
 105 100  
 120 43.9 35.0 52.4

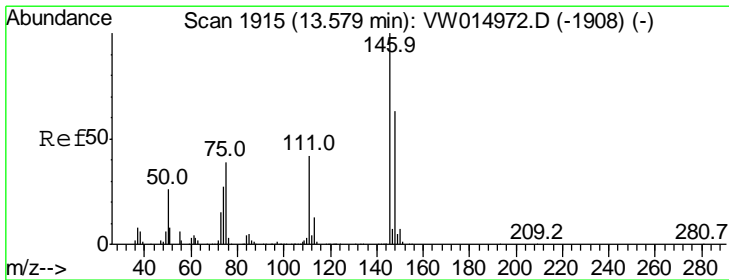
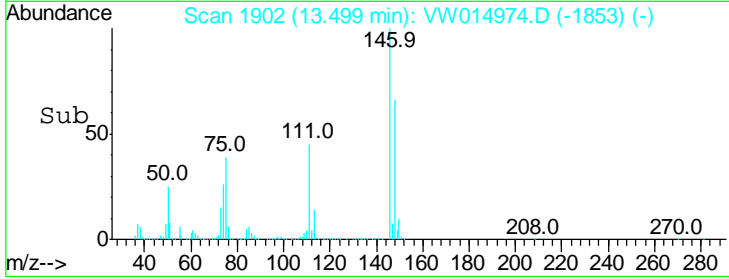
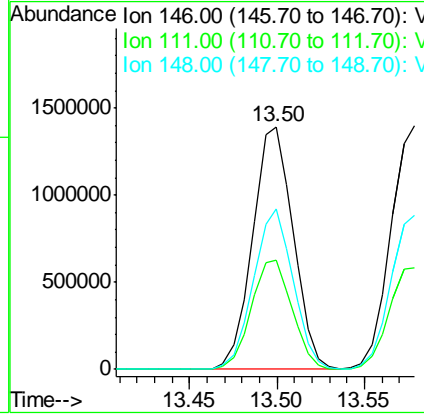
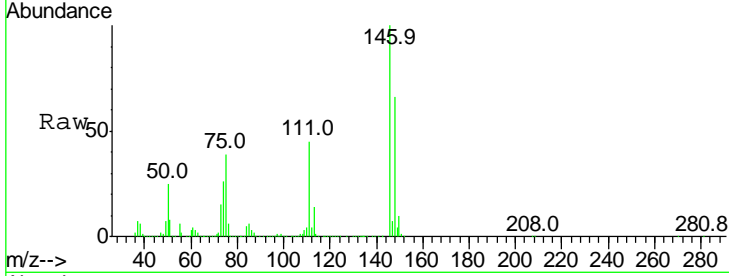




#64  
 1,3-Dichlorobenzene  
 Concen: 95.197 ug/L  
 RT: 13.50 min Scan# 1902  
 Delta R.T. -0.00 min  
 Lab File: VW014974.D  
 Acq: 13 Feb 2020 11:32

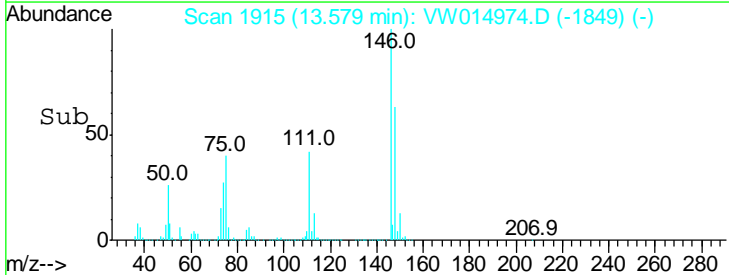
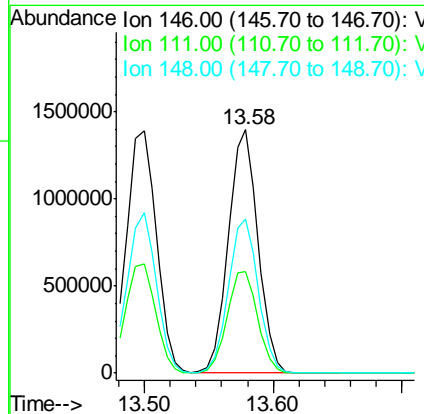
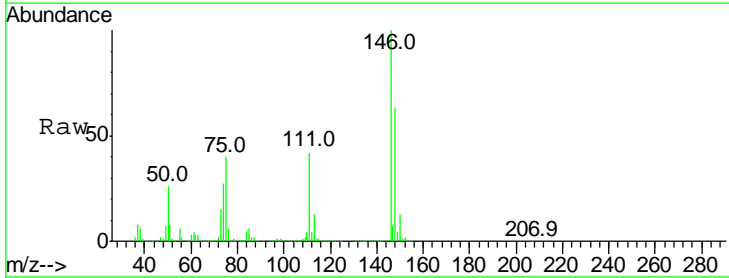
Instrument :  
 MSVOA\_W  
 ClientSampled :  
 VSTD100305

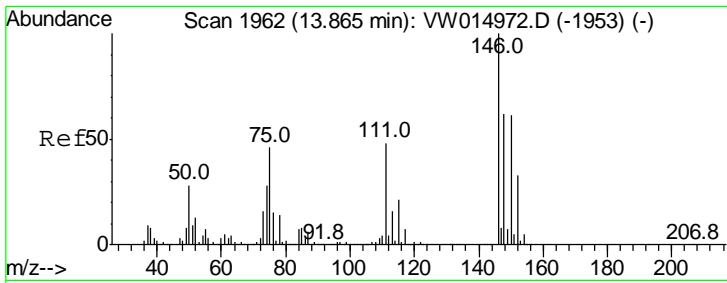
Tgt Ion	Resp	Lower	Upper
146	100		
111	45.0	30.2	56.0
148	65.8	44.2	82.2



#65  
 1,4-Dichlorobenzene  
 Concen: 94.883 ug/L  
 RT: 13.58 min Scan# 1915  
 Delta R.T. -0.00 min  
 Lab File: VW014974.D  
 Acq: 13 Feb 2020 11:32

Tgt Ion	Resp	Lower	Upper
146	100		
111	41.8	29.5	54.9
148	63.4	43.8	81.3

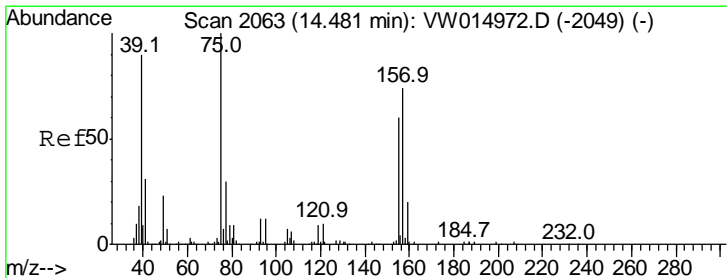
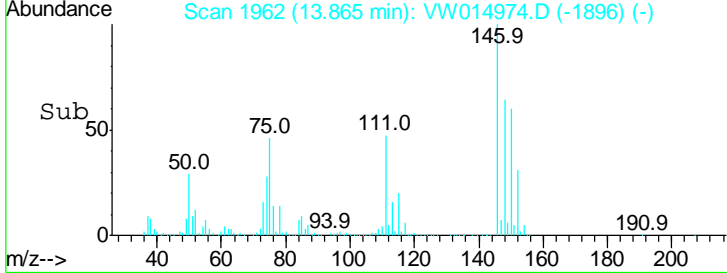
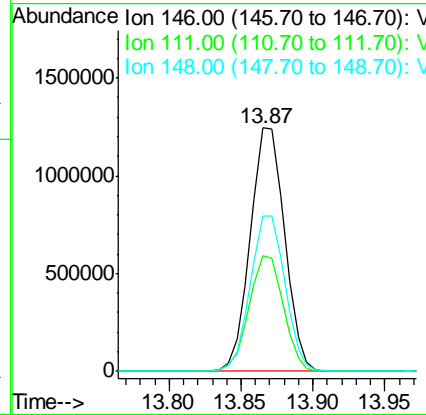
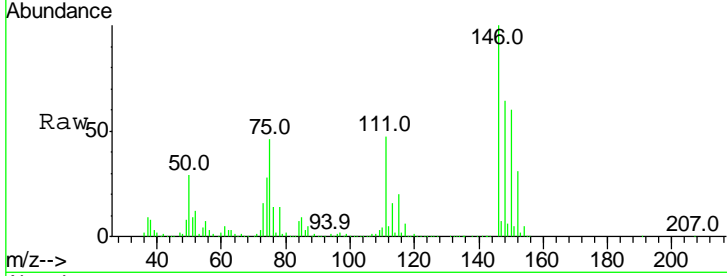




#67  
 1,2-Dichlorobenzene  
 Concen: 93.937 ug/L  
 RT: 13.87 min Scan# 1962  
 Delta R.T. 0.00 min  
 Lab File: VW014974.D  
 Acq: 13 Feb 2020 11:32

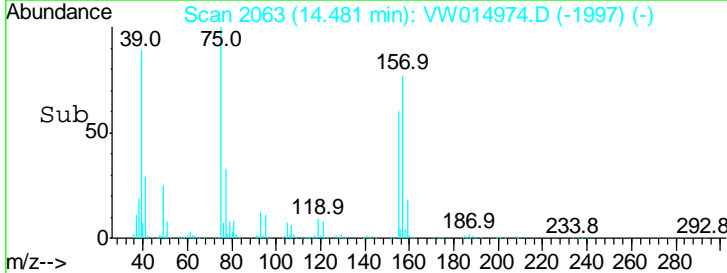
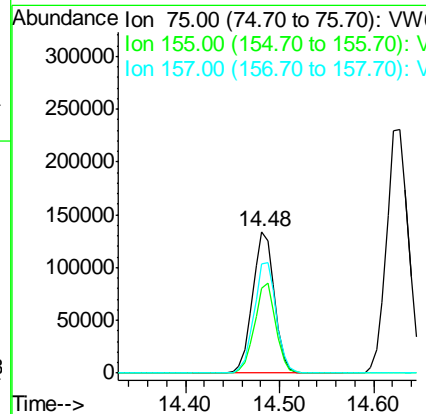
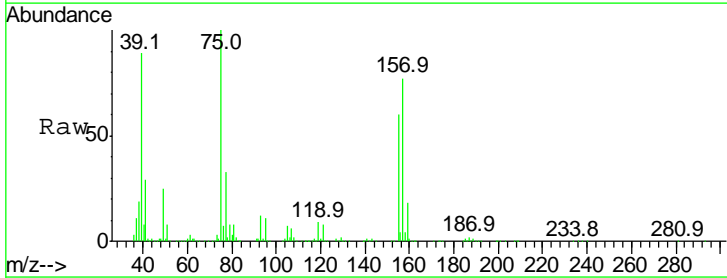
Instrument :  
 MSVOA\_W  
 ClientSampled :  
 VSTD100305

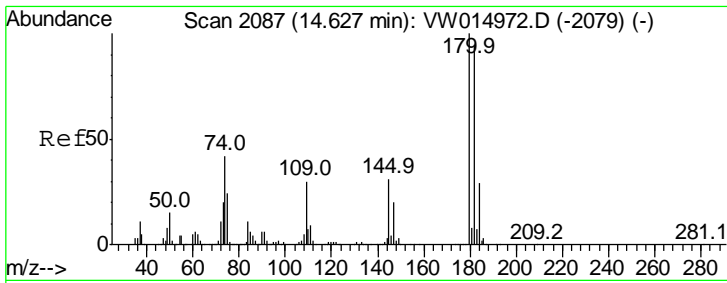
Tgt Ion	Resp	Lower	Upper
146	100		
111	47.3	38.0	57.0
148	64.0	49.5	74.3



#68  
 1,2-Dibromo-3-chloropropane  
 Concen: 82.937 ug/L  
 RT: 14.48 min Scan# 2063  
 Delta R.T. -0.00 min  
 Lab File: VW014974.D  
 Acq: 13 Feb 2020 11:32

Tgt Ion	Resp	Lower	Upper
75	100		
155	60.3	48.0	72.0
157	77.1	59.4	89.0

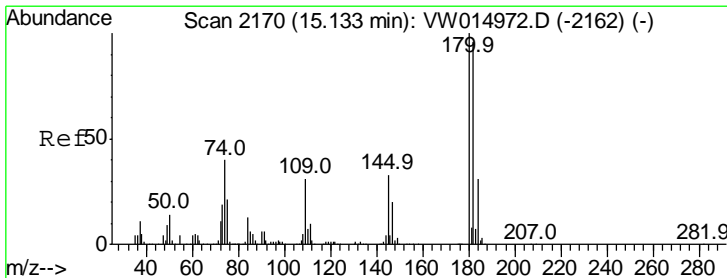
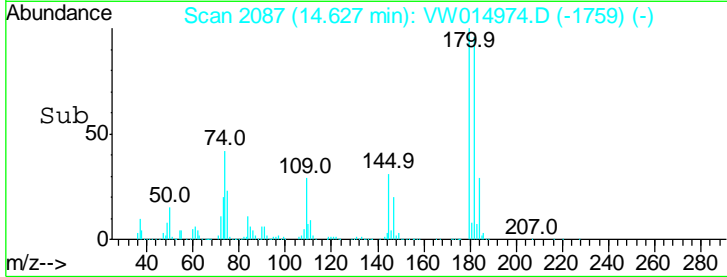
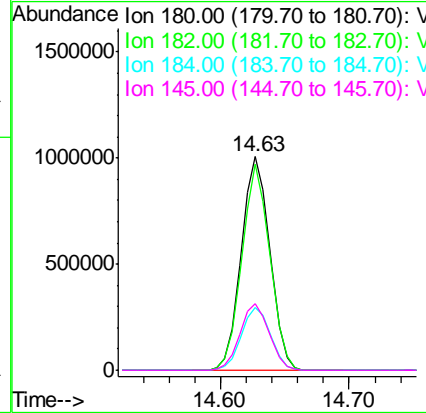
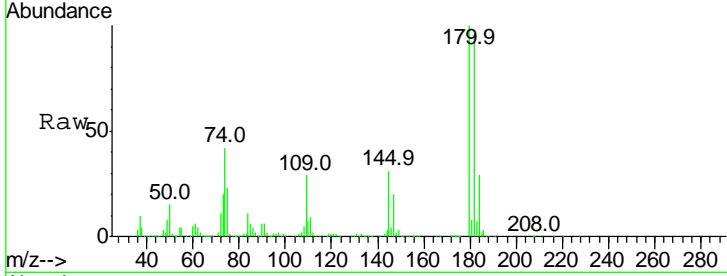




#69  
 1,3,5-Trichlorobenzene  
 Concen: 95.485 ug/L  
 RT: 14.63 min Scan# 2087  
 Delta R.T. -0.00 min  
 Lab File: VW014974.D  
 Acq: 13 Feb 2020 11:32

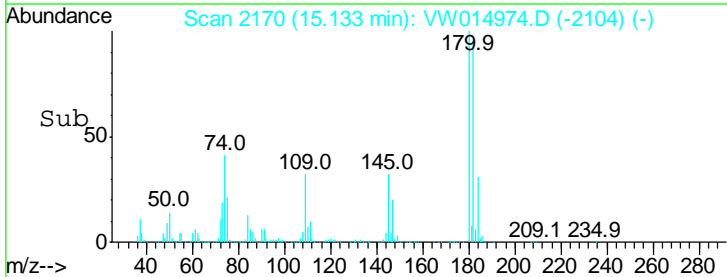
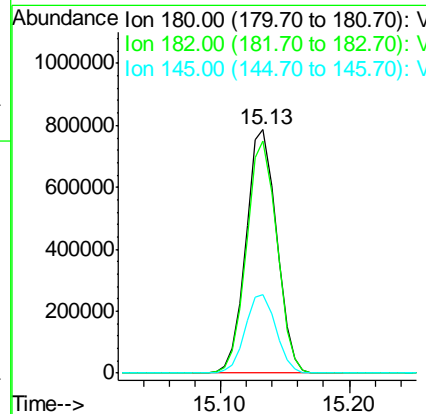
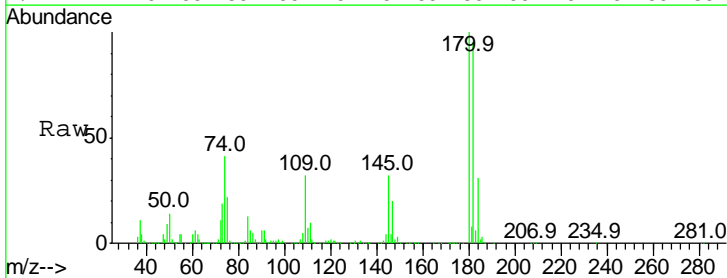
Instrument :  
 MSVOA\_W  
 ClientSampleId :  
 VSTD100305

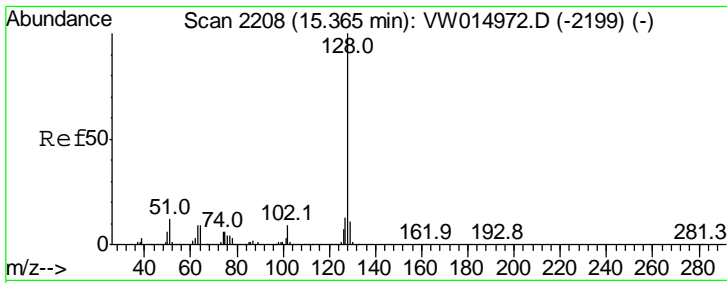
Tgt Ion	Resp	Lower	Upper
180	100		
182	94.3	76.5	114.7
184	29.9	24.2	36.2
145	31.8	25.0	37.6



#70  
 1,2,4-trichlorobenzene  
 Concen: 87.262 ug/L  
 RT: 15.13 min Scan# 2170  
 Delta R.T. -0.00 min  
 Lab File: VW014974.D  
 Acq: 13 Feb 2020 11:32

Tgt Ion	Resp	Lower	Upper
180	100		
182	94.4	76.2	114.4
145	32.5	26.2	39.4



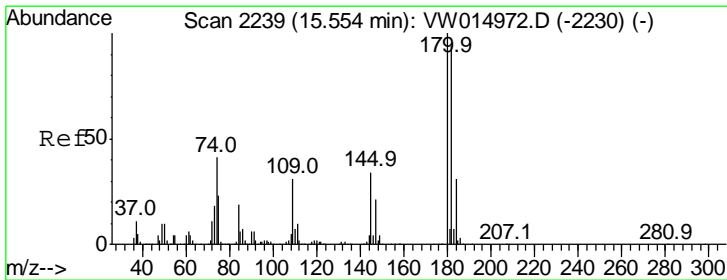
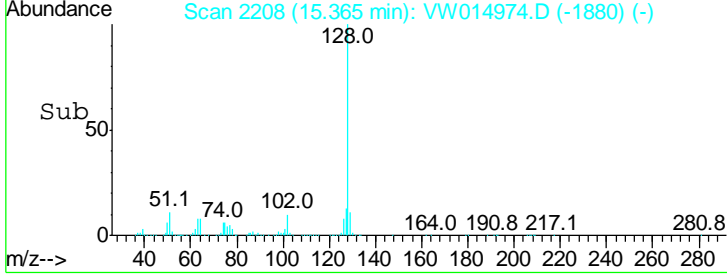
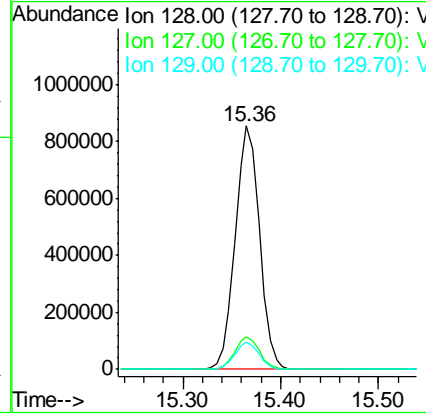
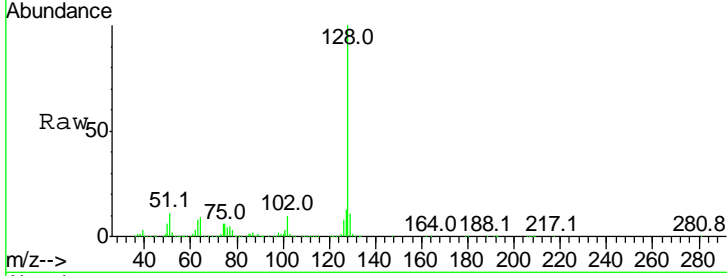


#71  
 Naphthalene  
 Concen: 35.789 ug/L  
 RT: 15.36 min Scan# 2208  
 Delta R.T. -0.00 min  
 Lab File: VW014974.D  
 Acq: 13 Feb 2020 11:32

Instrument :  
 MSVOA\_W  
 ClientSampled :  
 VSTD100305

Tgt Ion: 128 Resp: 1472782

Ion	Ratio	Lower	Upper
128	100		
127	13.3	10.5	15.7
129	11.0	8.6	12.8



#72  
 1,2,3-Trichlorobenzene  
 Concen: 85.881 ug/L  
 RT: 15.55 min Scan# 2239  
 Delta R.T. -0.00 min  
 Lab File: VW014974.D  
 Acq: 13 Feb 2020 11:32

Tgt Ion: 180 Resp: 1183309

Ion	Ratio	Lower	Upper
180	100		
182	94.1	75.2	112.8
145	34.1	27.0	40.6

