

Data File : VW008741.D
 Acq On : 18 Feb 2019 20:54
 Operator : SY/VA
 Sample : K1518-21RE
 Misc : 6.33G/5ML/MSVOA_W/SOIL
 ALS Vial : 22 Sample Multiplier: 1

Instrument :
 MSVOA_W
 ClientSampleId :
 CABLE-BRIDGE-FOUNDATION-B-10

Quant Time: Feb 19 03:33:23 2019
 Quant Method : Z:\VOASRV\HPCHEM1\MSVOA_W\METHOD\82W021319S.M
 Quant Title : SW846 8260
 QLast Update : Thu Feb 14 04:06:50 2019
 Response via : Initial Calibration

Internal Standards	R.T.	QIon	Response	Conc	Units	Dev(Min)
1) Pentafluorobenzene	7.95	168	346822	50.00	ug/l	0.00
34) 1,4-Difluorobenzene	8.84	114	530575	50.00	ug/l	0.00
63) Chlorobenzene-d5	11.63	117	464357	50.00	ug/l	0.00
72) 1,4-Dichlorobenzene-d4	13.56	152	209208	50.00	ug/l	0.00

System Monitoring Compounds

33) 1,2-Dichloroethane-d4	8.30	65	189589	52.58	ug/l	0.00
Spiked Amount				50.000		
			Recovery	=	105.16%	
35) Dibromofluoromethane	7.88	113	169432	51.43	ug/l	0.00
Spiked Amount				50.000		
			Recovery	=	102.86%	
50) Toluene-d8	10.32	98	631760	49.74	ug/l	0.00
Spiked Amount				50.000		
			Recovery	=	99.48%	
62) 4-Bromofluorobenzene	12.62	95	210872	44.08	ug/l	0.00
Spiked Amount				50.000		
			Recovery	=	88.16%	

Target Compounds

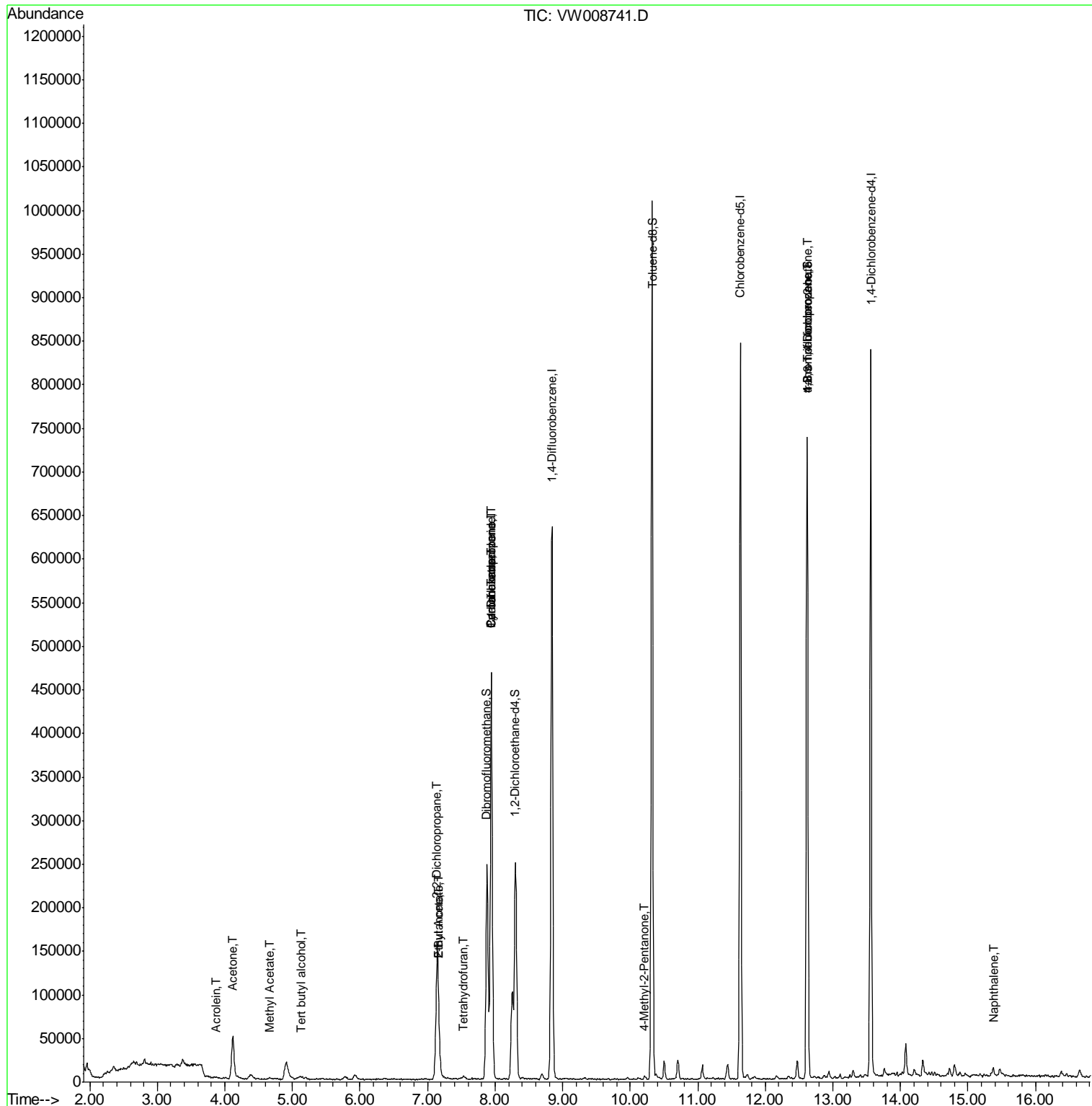
						Qvalue
11) Tert butyl alcohol	5.12	59	3013	10.444	ug/l #	83
13) Acrolein	3.87	56	386	1.299	ug/l #	14
16) Acetone	4.12	43	82077	100.033	ug/l	99
18) Methyl Acetate	4.66	43	3142	1.676	ug/l	92
20) Methylene Chloride	4.90	84	16651	Below Cal	#	80
25) 2-Butanone	7.17	43	29613	25.560	ug/l	97
26) 2,2-Dichloropropane	7.14	77	10991	2.693	ug/l #	53
29) Tetrahydrofuran	7.53	42	3115	4.079	ug/l	95
31) Cyclohexane	7.95	56	8092	1.227	ug/l #	43
36) 1,1-Dichloropropene	7.95	75	26785	5.025	ug/l #	50
37) Ethyl Acetate	7.17	43	29613	11.516	ug/l #	70
38) Carbon Tetrachloride	7.94	117	33666	6.351	ug/l #	19
51) 4-Methyl-2-Pentanone	10.21	43	3257	1.237	ug/l	99
76) 1,2,3-Trichloropropane	12.62	75	109363	52.939	ug/l #	100
81) trans-1,4-Dichloro-2-buten	12.62	75	109363	113.358	ug/l #	7
95) Naphthalene	15.37	128	8356	1.018	ug/l	96

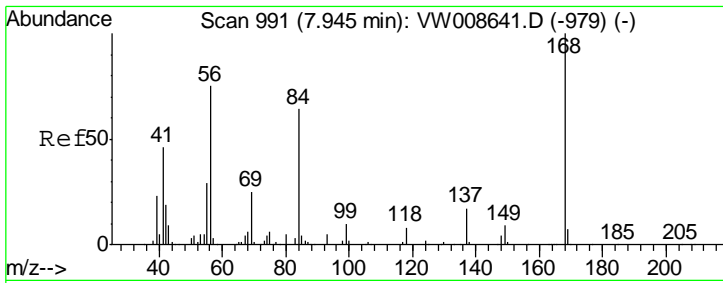
(#) = qualifier out of range (m) = manual integration (+) = signals summed

Data File : VW008741.D
Acq On : 18 Feb 2019 20:54
Operator : SY/VA
Sample : K1518-21RE
Misc : 6.33G/5ML/MSVOA_W/SOIL
ALS Vial : 22 Sample Multiplier: 1

Instrument :
MSVOA_W
Client Sample ID :
CABLE-BRIDGE-FOUNDATION-B-10

Quant Time: Feb 19 03:33:23 2019
Quant Method : Z:\VOASRV\HPCHEM1\MSVOA_W\METHOD\82W021319S.M
Quant Title : SW846 8260
QLast Update : Thu Feb 14 04:06:50 2019
Response via : Initial Calibration

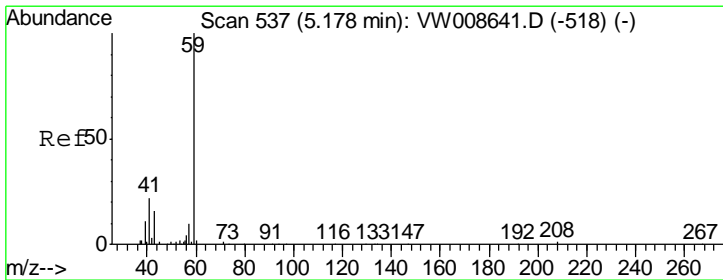
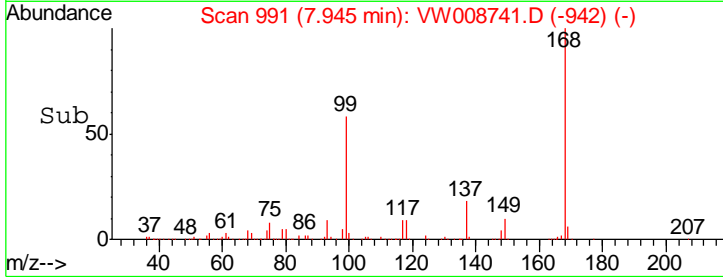
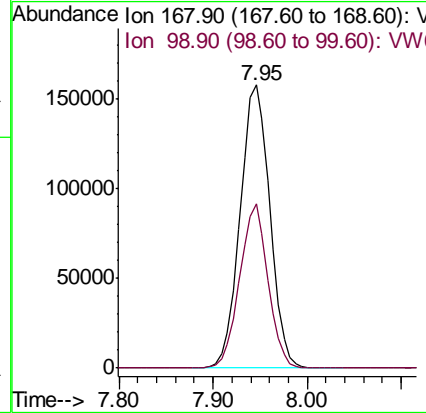
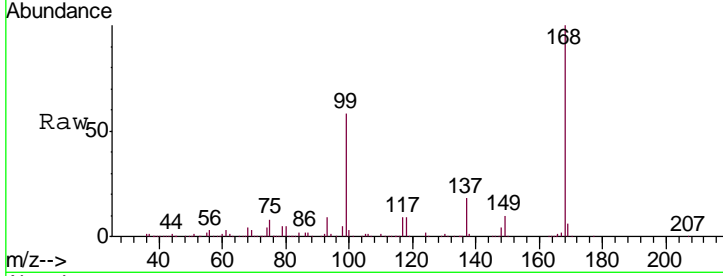




#1
 Pentafluorobenzene
 Concen: 50.000 ug/l
 RT: 7.95 min Scan# 991
 Delta R.T. 0.00 min
 Lab File: VW008741.D
 Acq: 18 Feb 2019 20:54

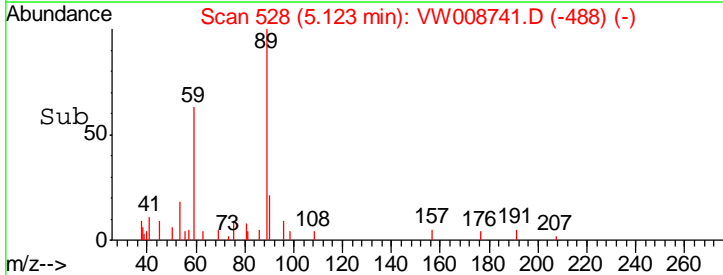
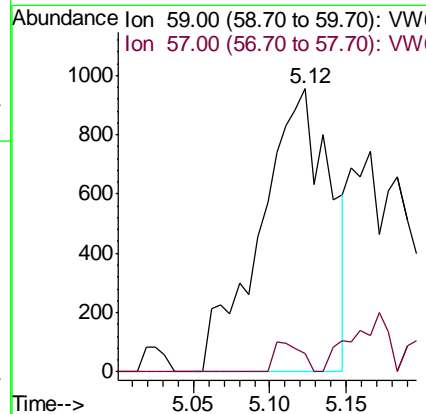
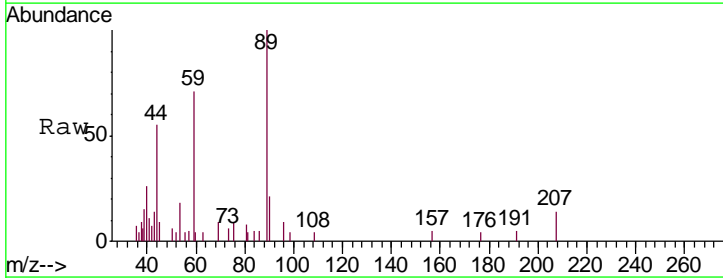
Instrument :
 MSVOA_W
 ClientSampled :
 CABLE-BRIDGE-FOUNDATION-B-10

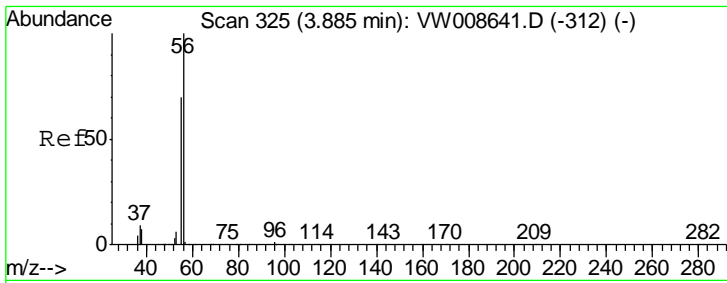
Tgt Ion: 168 Resp: 346822
 Ion Ratio Lower Upper
 168 100
 99 57.9 42.8 64.2



#11
 Tert butyl alcohol
 Concen: 10.444 ug/l
 RT: 5.12 min Scan# 528
 Delta R.T. -0.05 min
 Lab File: VW008741.D
 Acq: 18 Feb 2019 20:54

Tgt Ion: 59 Resp: 3013
 Ion Ratio Lower Upper
 59 100
 57 4.1 8.3 12.5#

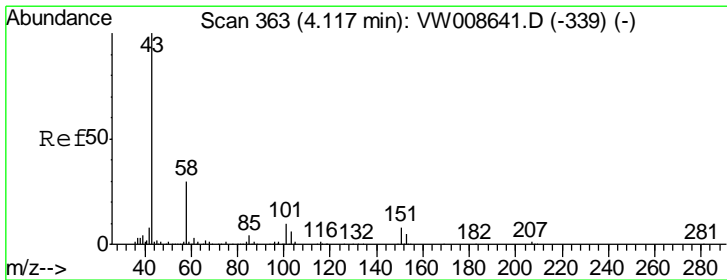
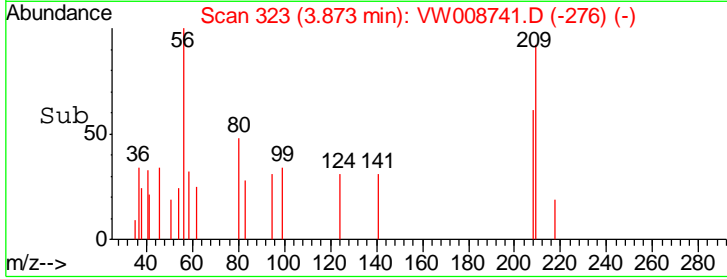
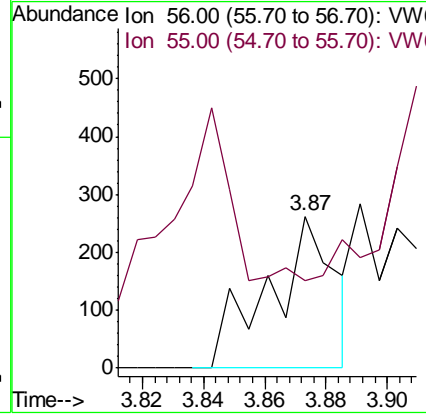
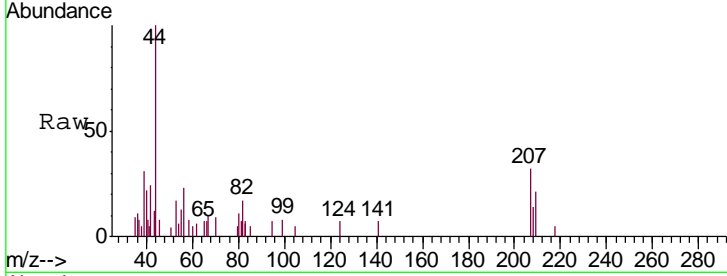




#13
 Acrolein
 Concen: 1.299 ug/l
 RT: 3.87 min Scan# 323
 Delta R.T. -0.01 min
 Lab File: VW008741.D
 Acq: 18 Feb 2019 20:54

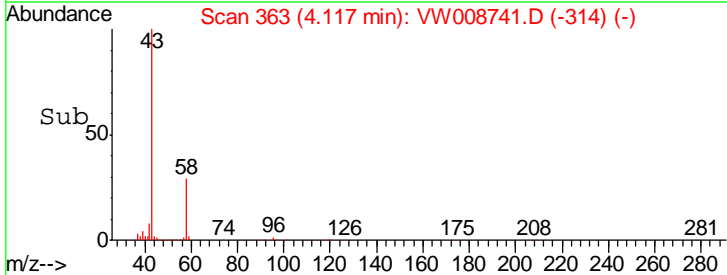
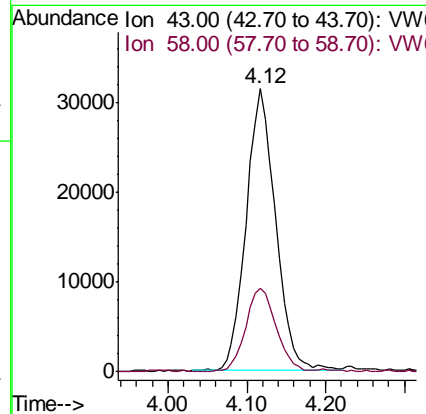
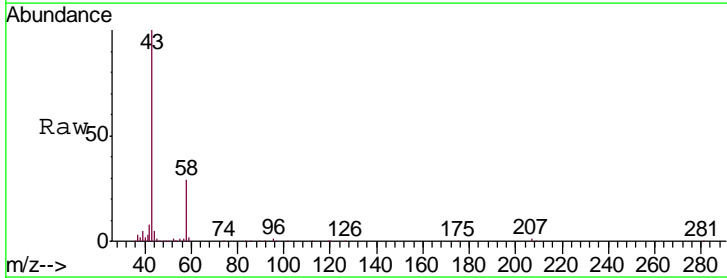
Instrument : MSVOA_W
 ClientSampled : CABLE-BRIDGE-FOUNDATION-B-10

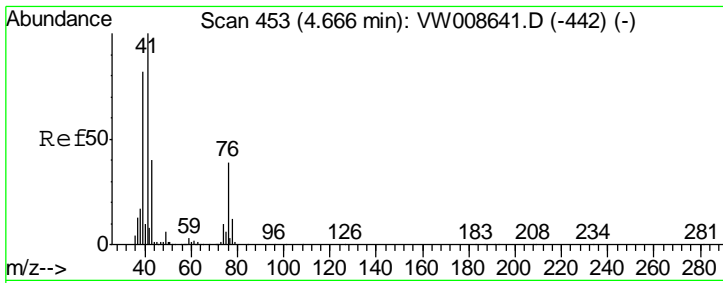
Tgt Ion: 56 Resp: 386
 Ion Ratio Lower Upper
 56 100
 55 0.0 57.4 86.2#



#16
 Acetone
 Concen: 100.033 ug/l
 RT: 4.12 min Scan# 363
 Delta R.T. 0.00 min
 Lab File: VW008741.D
 Acq: 18 Feb 2019 20:54

Tgt Ion: 43 Resp: 82077
 Ion Ratio Lower Upper
 43 100
 58 29.6 24.1 36.1

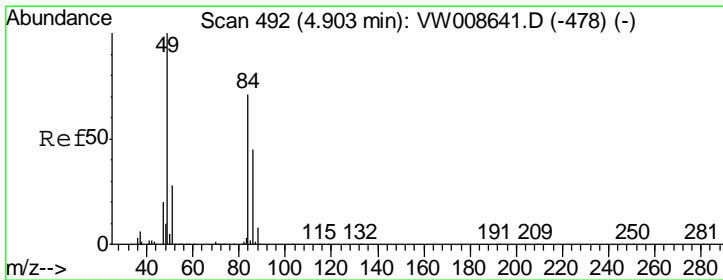
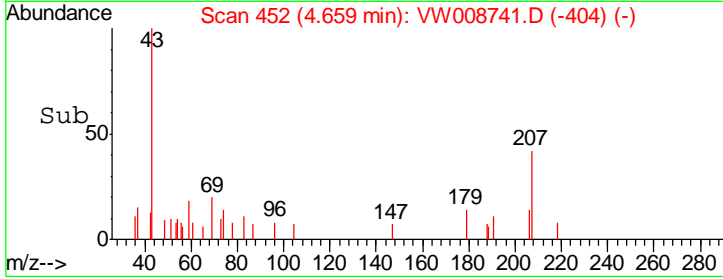
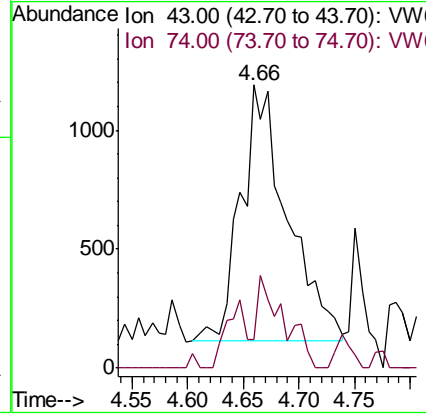
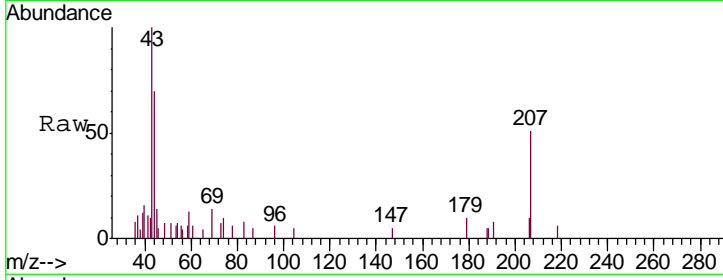




#18
 Methyl Acetate
 Concen: 1.676 ug/l
 RT: 4.66 min Scan# 452
 Delta R.T. -0.01 min
 Lab File: VW008741.D
 Acq: 18 Feb 2019 20:54

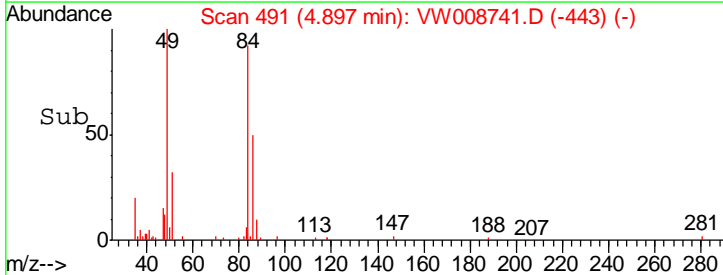
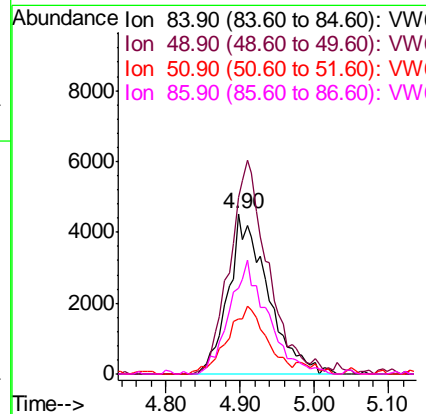
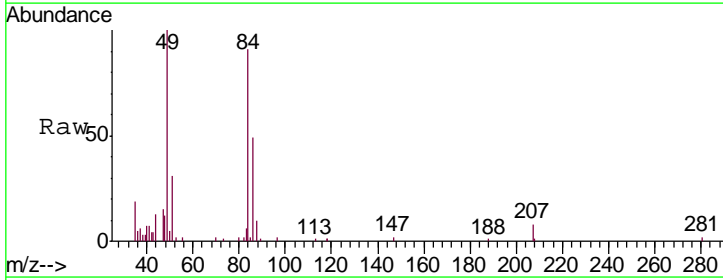
Instrument :
 MSVOA_W
 ClientSampleId :
 CABLE-BRIDGE-FOUNDATION-B-10

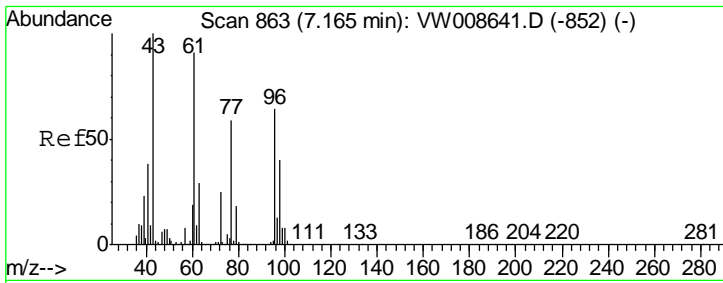
Tgt Ion: 43 Resp: 3142
 Ion Ratio Lower Upper
 43 100
 74 20.0 19.0 28.4



#20
 Methylene Chloride
 Concen: Below Cal
 RT: 4.90 min Scan# 491
 Delta R.T. -0.01 min
 Lab File: VW008741.D
 Acq: 18 Feb 2019 20:54

Tgt Ion: 84 Resp: 16651
 Ion Ratio Lower Upper
 84 100
 49 110.2 113.3 169.9#
 51 34.4 32.1 48.1
 86 53.8 50.9 76.3

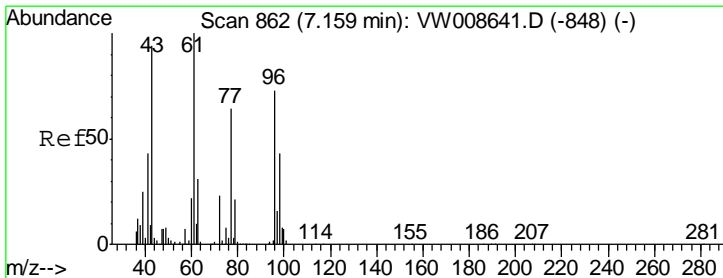
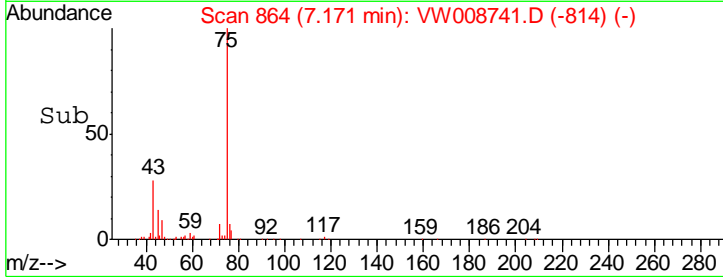
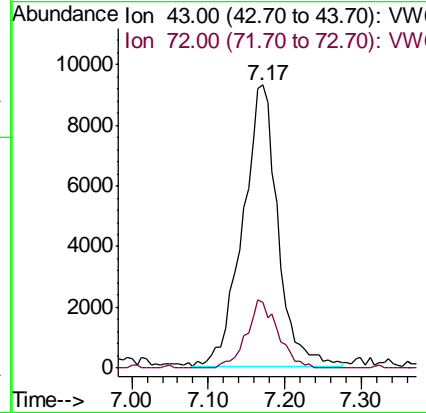
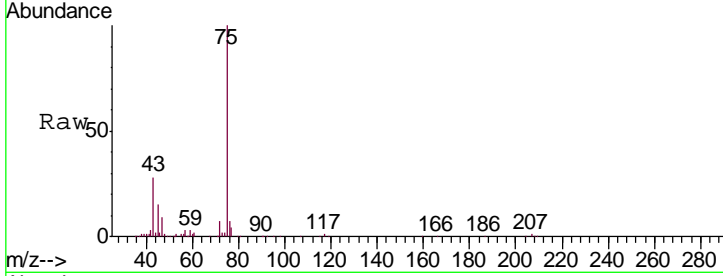




#25
 2-Butanone
 Concen: 25.560 ug/l
 RT: 7.17 min Scan# 864
 Delta R.T. 0.01 min
 Lab File: VW008741.D
 Acq: 18 Feb 2019 20:54

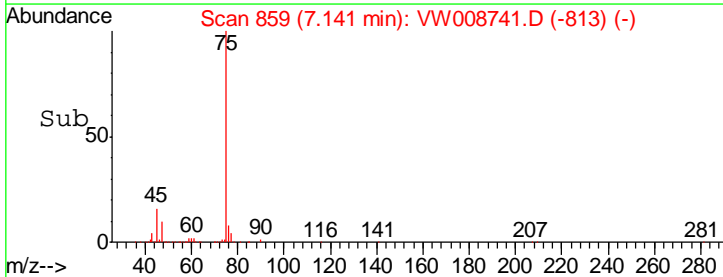
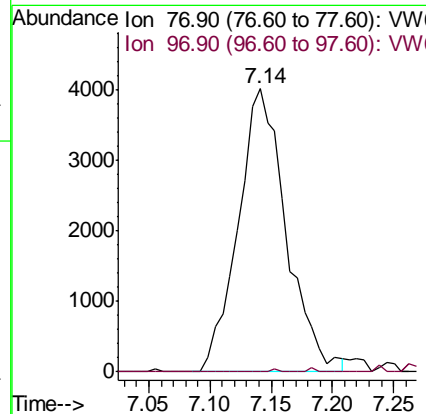
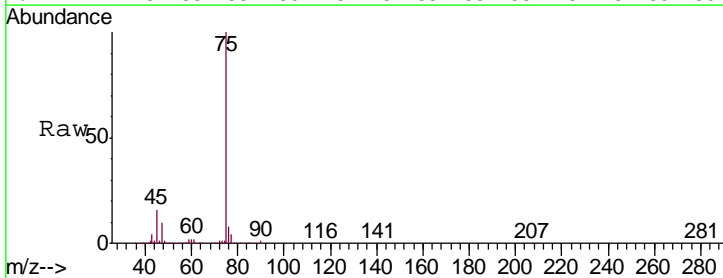
Instrument :
 MSVOA_W
 ClientSampled :
 CABLE-BRIDGE-FOUNDATION-B-10

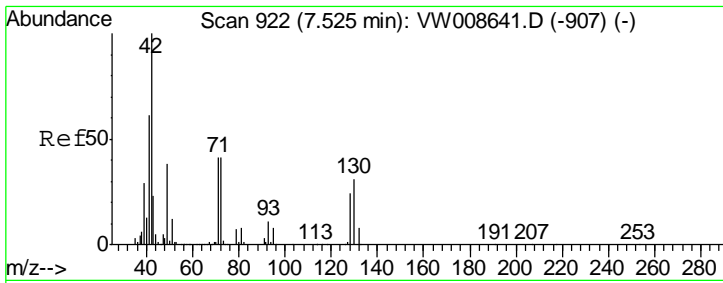
Tgt Ion: 43 Resp: 29613
 Ion Ratio Lower Upper
 43 100
 72 23.2 19.7 29.5



#26
 2,2-Dichloropropane
 Concen: 2.693 ug/l
 RT: 7.14 min Scan# 859
 Delta R.T. -0.02 min
 Lab File: VW008741.D
 Acq: 18 Feb 2019 20:54

Tgt Ion: 77 Resp: 10991
 Ion Ratio Lower Upper
 77 100
 97 0.2 11.7 35.0#

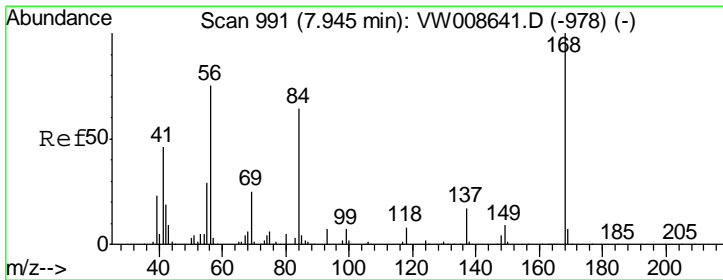
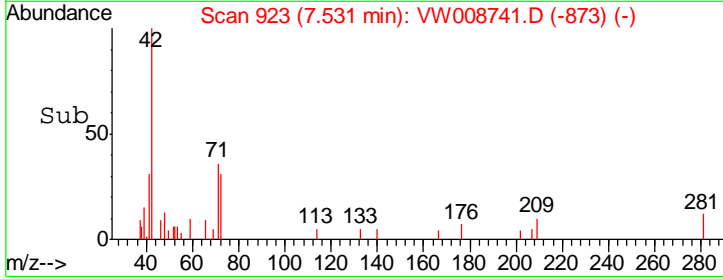
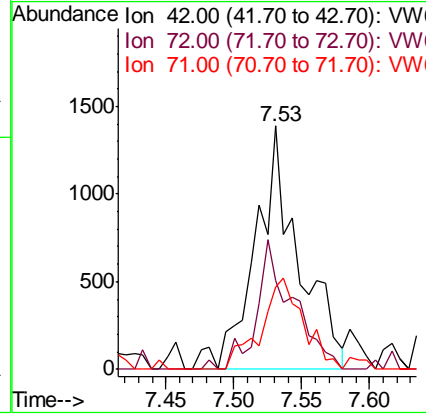
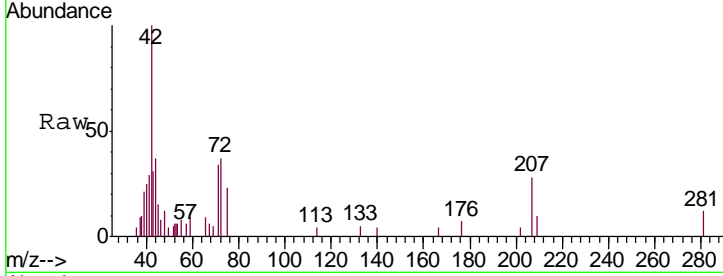




#29
 Tetrahydrofuran
 Concen: 4.079 ug/l
 RT: 7.53 min Scan# 923
 Delta R.T. 0.01 min
 Lab File: VW008741.D
 Acq: 18 Feb 2019 20:54

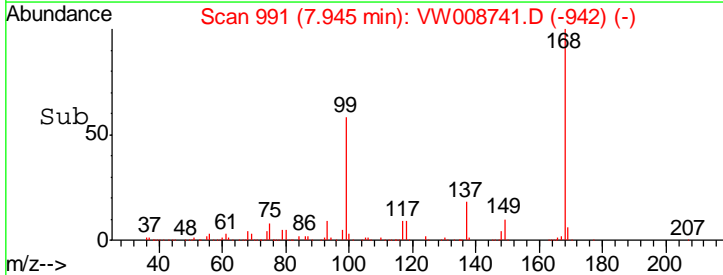
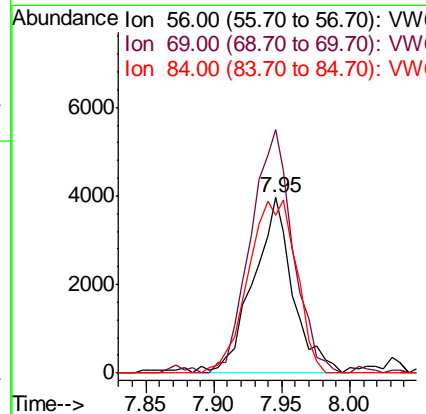
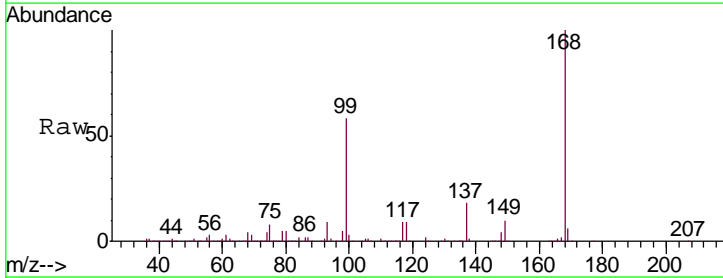
Instrument :
 MSVOA_W
 ClientSampled :
 CABLE-BRIDGE-FOUNDATION-B-10

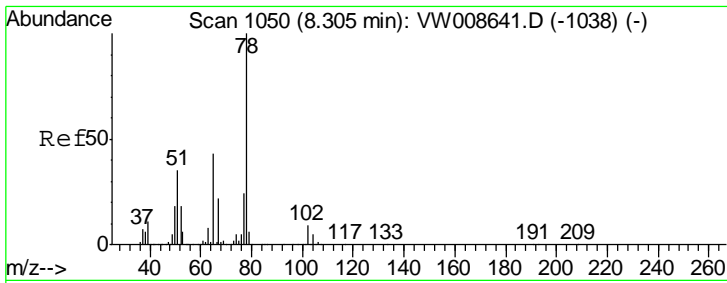
Tgt Ion	Resp	Lower	Upper
42	3115		
72	44.3	32.2	48.2
71	36.5	31.0	46.6



#31
 Cyclohexane
 Concen: 1.227 ug/l
 RT: 7.95 min Scan# 991
 Delta R.T. 0.00 min
 Lab File: VW008741.D
 Acq: 18 Feb 2019 20:54

Tgt Ion	Resp	Lower	Upper
56	8092		
69	138.5	26.4	39.6#
84	89.8	67.4	101.2

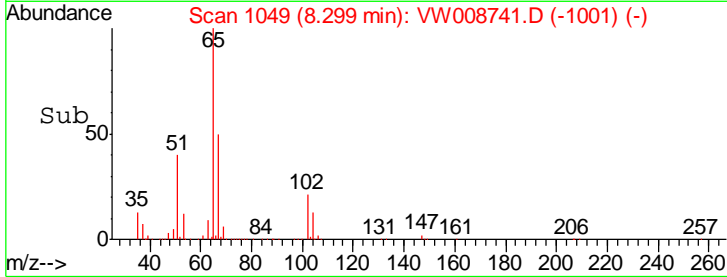
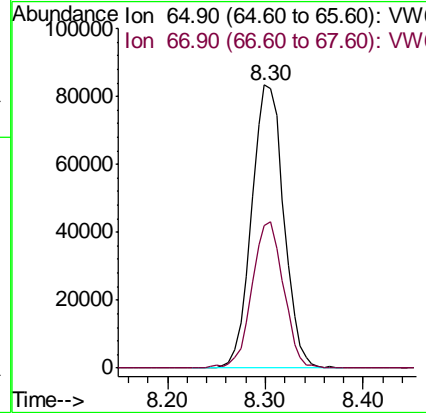
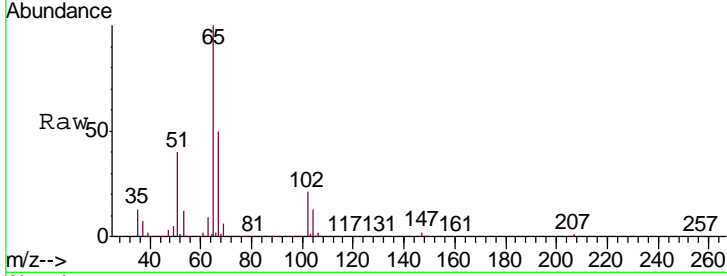




#33
 1,2-Dichloroethane-d4
 Concen: 52.581 ug/l
 RT: 8.30 min Scan# 1049
 Delta R.T. -0.01 min
 Lab File: VW008741.D
 Acq: 18 Feb 2019 20:54

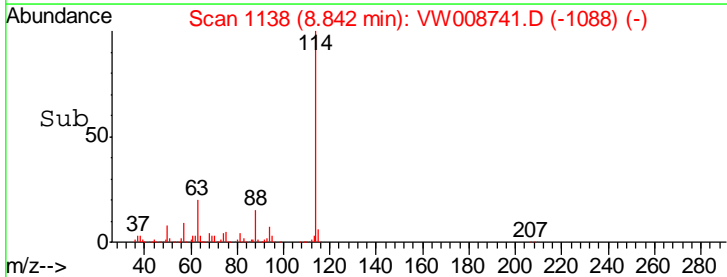
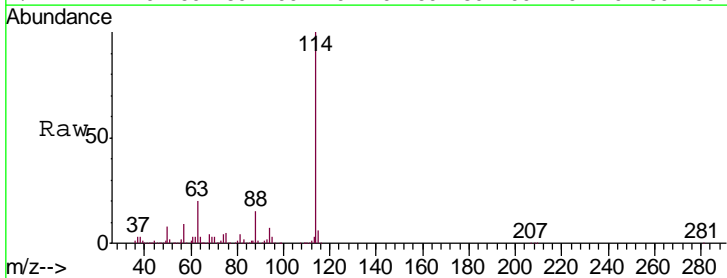
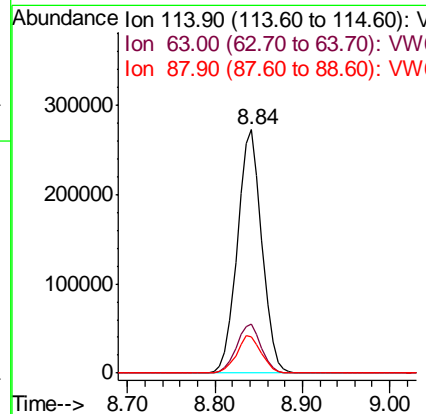
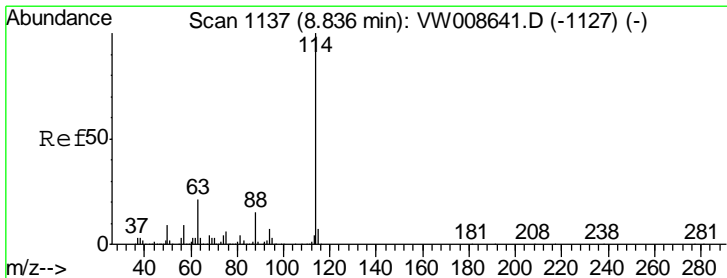
Instrument : MSVOA_W
 ClientSampleId : CABLE-BRIDGE-FOUNDATION-B-10

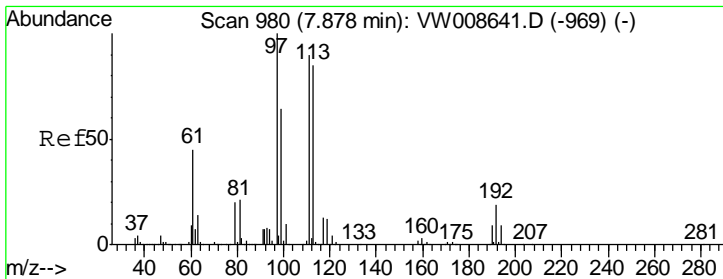
Tgt Ion: 65 Resp: 189589
 Ion Ratio Lower Upper
 65 100
 67 50.9 0.0 102.0



#34
 1,4-Difluorobenzene
 Concen: 50.000 ug/l
 RT: 8.84 min Scan# 1138
 Delta R.T. 0.01 min
 Lab File: VW008741.D
 Acq: 18 Feb 2019 20:54

Tgt Ion: 114 Resp: 530575
 Ion Ratio Lower Upper
 114 100
 63 20.1 0.0 41.2
 88 14.9 0.0 29.6

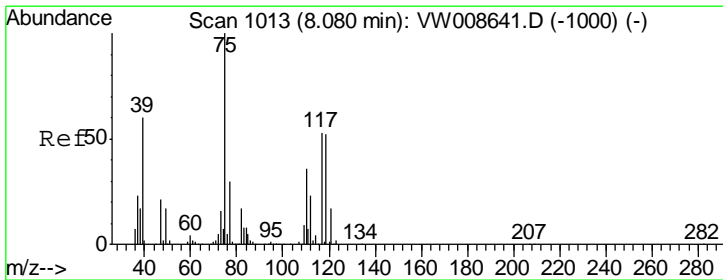
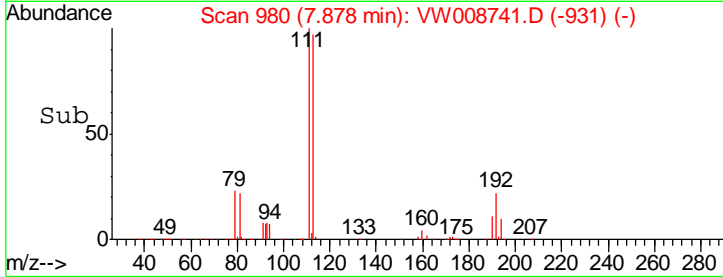
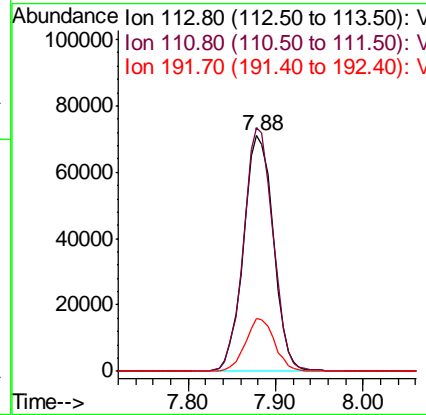
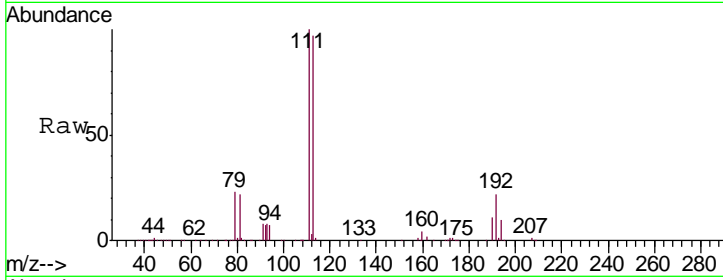




#35
 Dibromofluoromethane
 Concen: 51.428 ug/l
 RT: 7.88 min Scan# 980
 Delta R.T. 0.00 min
 Lab File: VW008741.D
 Acq: 18 Feb 2019 20:54

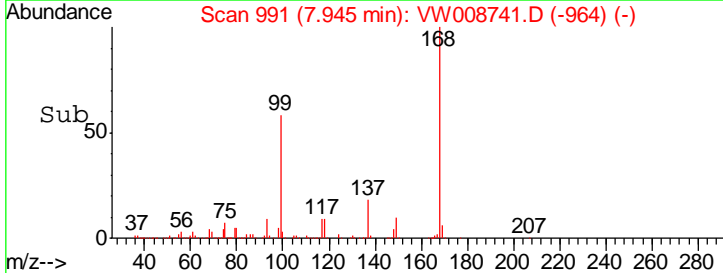
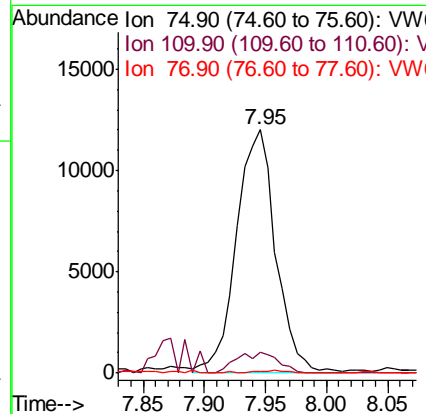
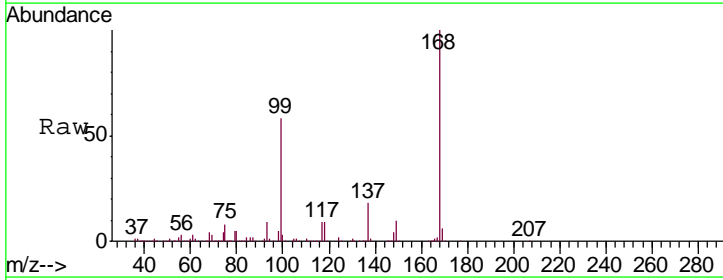
Instrument :
 MSVOA_W
ClientSampled :
 CABLE-BRIDGE-FOUNDATION-B-10

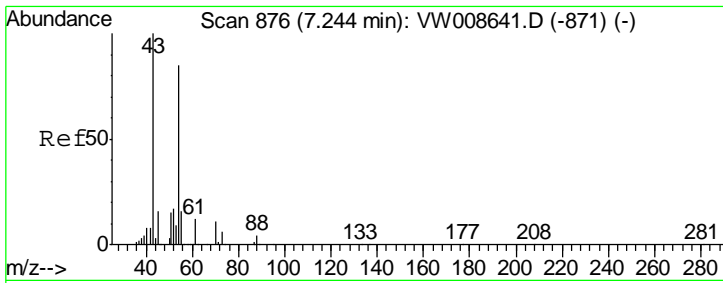
Tgt Ion	Resp	Lower	Upper
113	169432		
113	100		
111	101.6	84.0	126.0
192	21.8	17.4	26.2



#36
 1,1-Dichloropropene
 Concen: 5.025 ug/l
 RT: 7.95 min Scan# 991
 Delta R.T. -0.13 min
 Lab File: VW008741.D
 Acq: 18 Feb 2019 20:54

Tgt Ion	Resp	Lower	Upper
75	26785		
75	100		
110	9.2	17.8	53.3#
77	0.7	24.7	37.1#

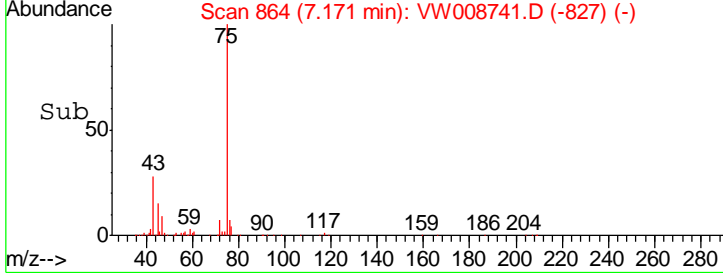
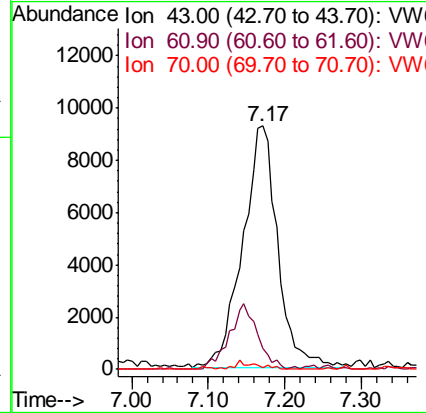
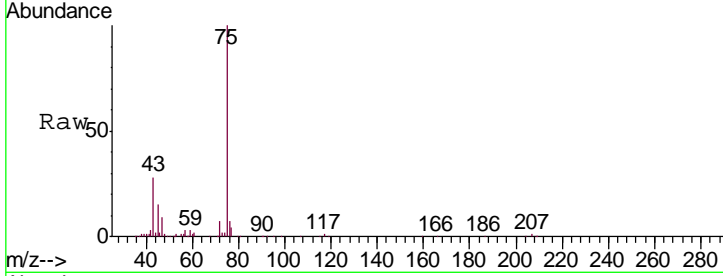




#37
 Ethyl Acetate
 Concen: 11.516 ug/l
 RT: 7.17 min Scan# 864
 Delta R.T. -0.07 min
 Lab File: VW008741.D
 Acq: 18 Feb 2019 20:54

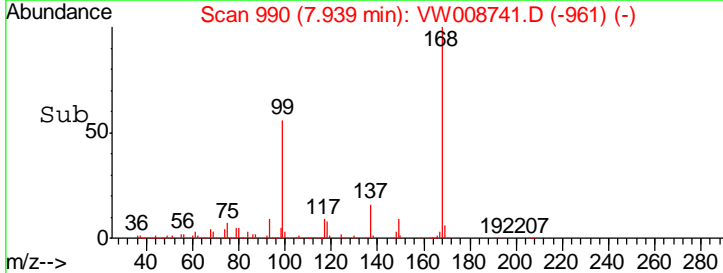
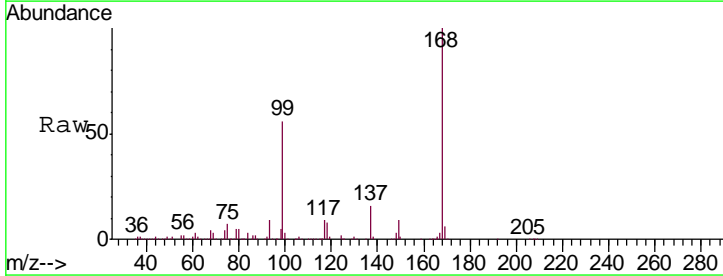
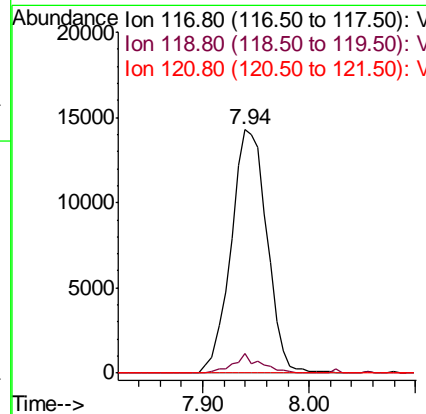
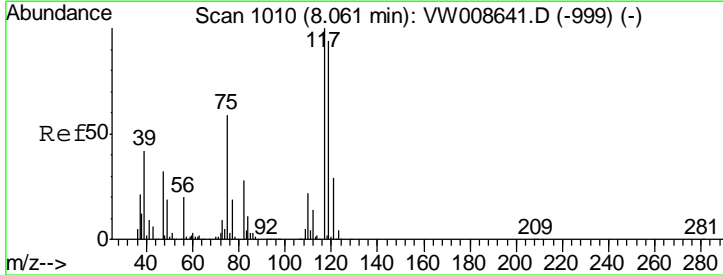
Instrument :
 MSVOA_W
ClientSampled :
 CABLE-BRIDGE-FOUNDATION-B-10

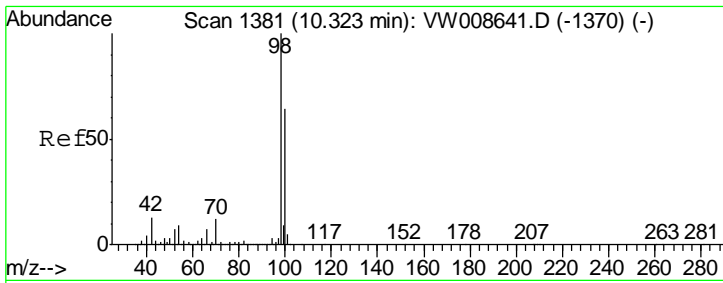
Tgt Ion	Resp	Lower	Upper
43	29613		
61	0.0	10.5	15.7#
70	0.0	8.1	12.1#



#38
 Carbon Tetrachloride
 Concen: 6.351 ug/l
 RT: 7.94 min Scan# 990
 Delta R.T. -0.12 min
 Lab File: VW008741.D
 Acq: 18 Feb 2019 20:54

Tgt Ion	Resp	Lower	Upper
117	33666		
119	7.9	75.1	112.7#
121	0.0	23.5	35.3#

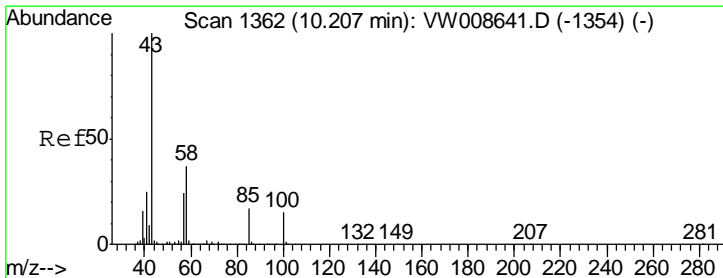
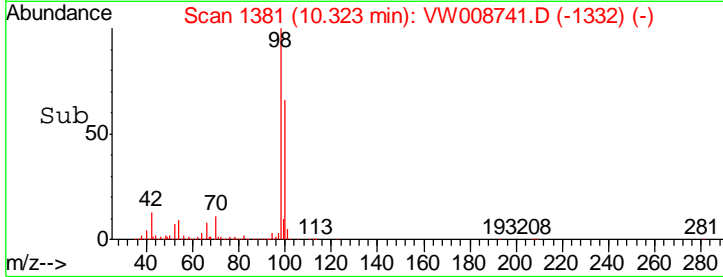
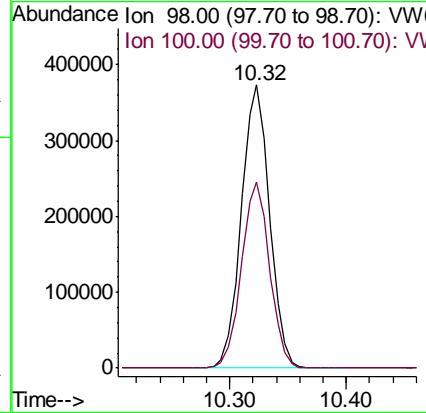
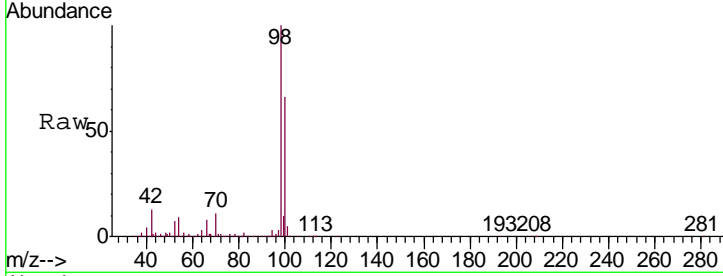




#50
 Toluene-d8
 Concen: 49.745 ug/l
 RT: 10.32 min Scan# 1381
 Delta R.T. 0.00 min
 Lab File: VW008741.D
 Acq: 18 Feb 2019 20:54

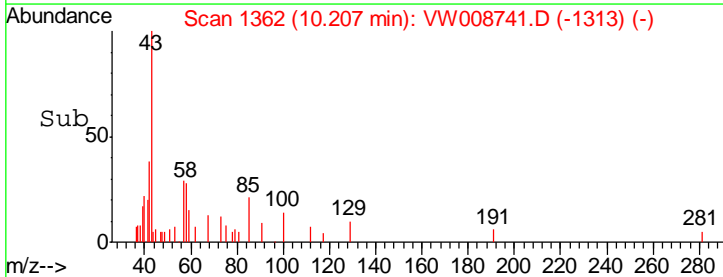
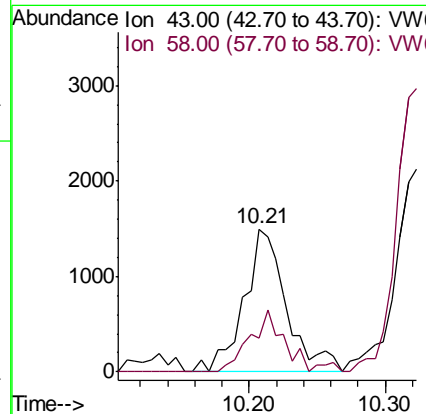
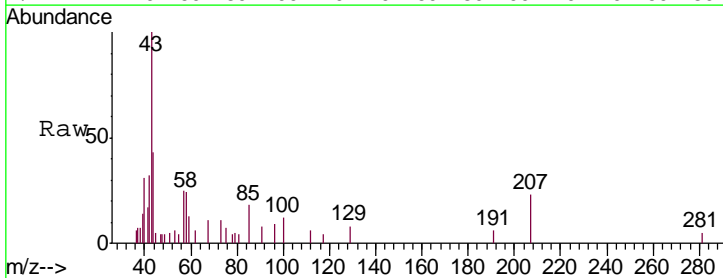
Instrument :
 MSVOA_W
 ClientSampled :
 CABLE-BRIDGE-FOUNDATION-B-10

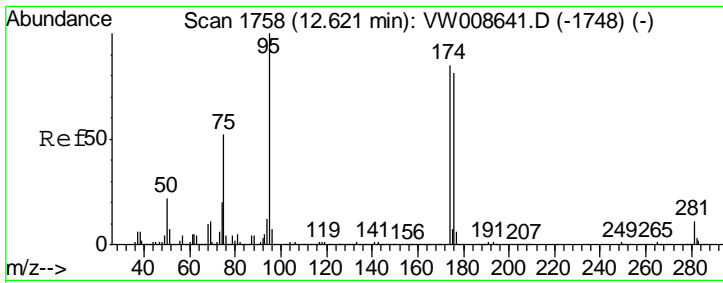
Tgt Ion: 98 Resp: 631760
 Ion Ratio Lower Upper
 98 100
 100 65.6 52.2 78.4



#51
 4-Methyl-2-Pentanone
 Concen: 1.237 ug/l
 RT: 10.21 min Scan# 1362
 Delta R.T. 0.00 min
 Lab File: VW008741.D
 Acq: 18 Feb 2019 20:54

Tgt Ion: 43 Resp: 3257
 Ion Ratio Lower Upper
 43 100
 58 35.6 29.0 43.6

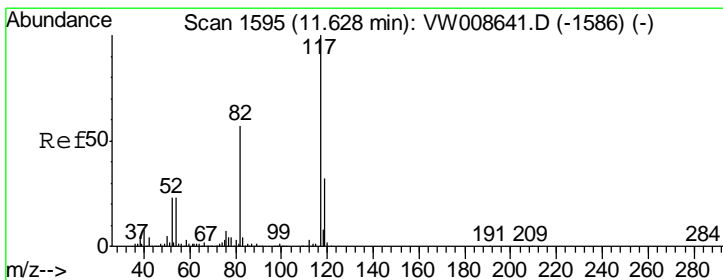
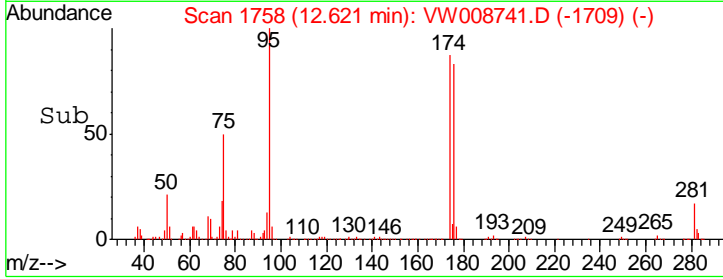
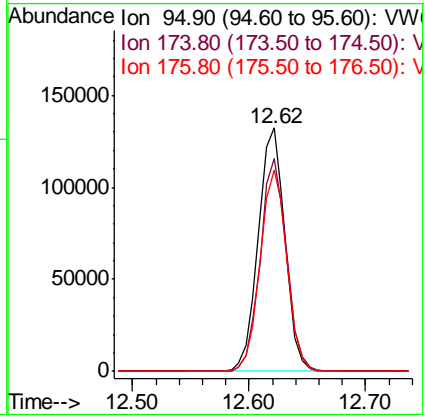
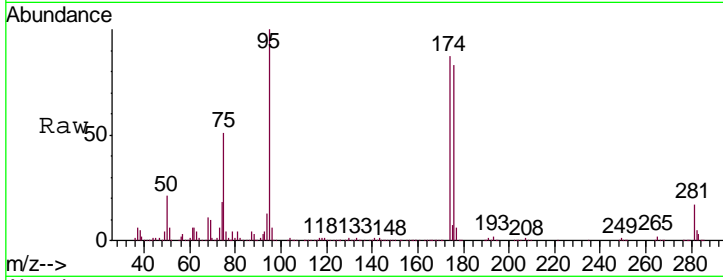




#62
 4-Bromofluorobenzene
 Concen: 44.082 ug/l
 RT: 12.62 min Scan# 1758
 Delta R.T. 0.00 min
 Lab File: VW008741.D
 Acq: 18 Feb 2019 20:54

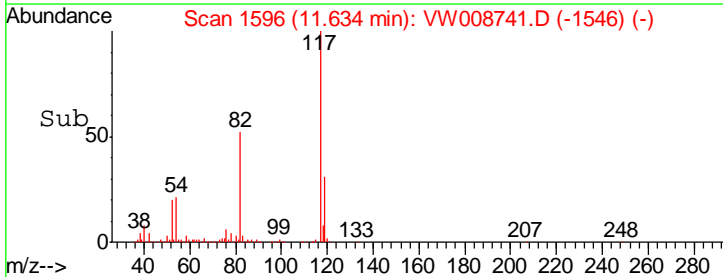
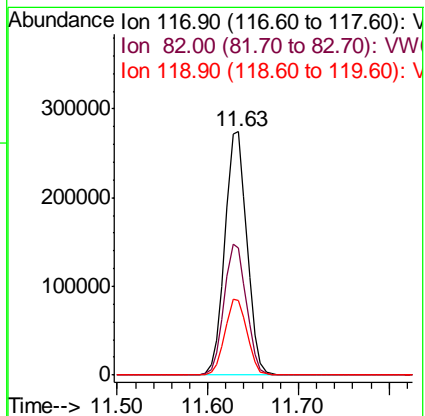
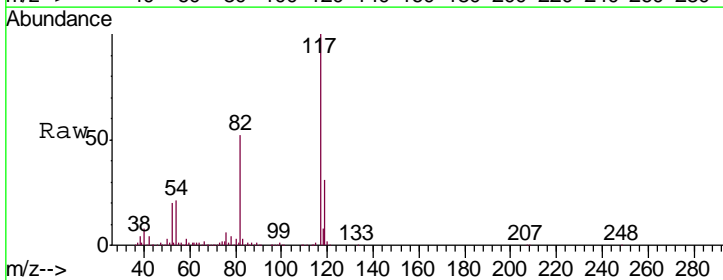
Instrument : MSVOA_W
 ClientSampled : CABLE-BRIDGE-FOUNDATION-B-10

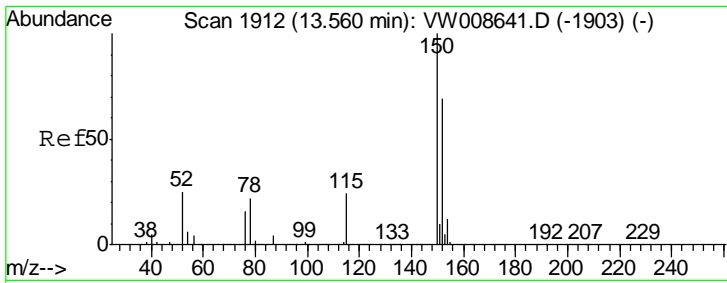
Tgt Ion	Resp	Lower	Upper
95	210872		
174	86.7	0.0	163.2
176	82.9	0.0	158.0



#63
 Chlorobenzene-d5
 Concen: 50.000 ug/l
 RT: 11.63 min Scan# 1596
 Delta R.T. 0.01 min
 Lab File: VW008741.D
 Acq: 18 Feb 2019 20:54

Tgt Ion	Resp	Lower	Upper
117	464357		
82	52.2	45.6	68.4
119	30.5	25.7	38.5

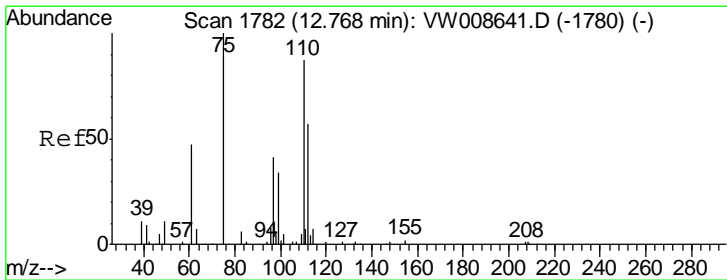
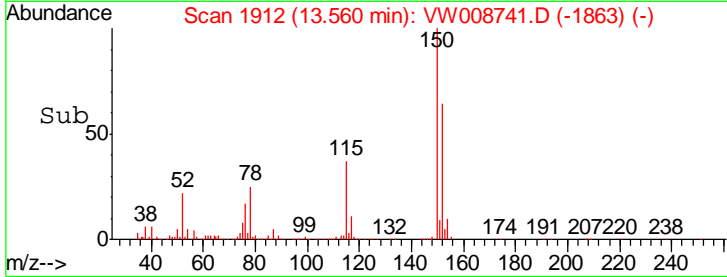
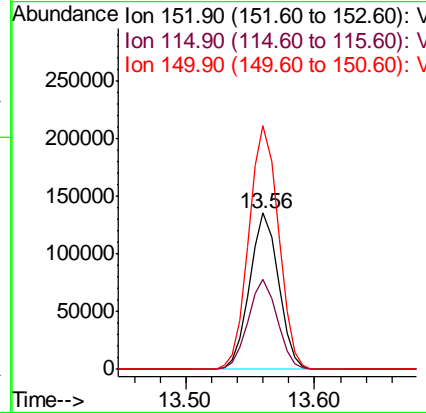
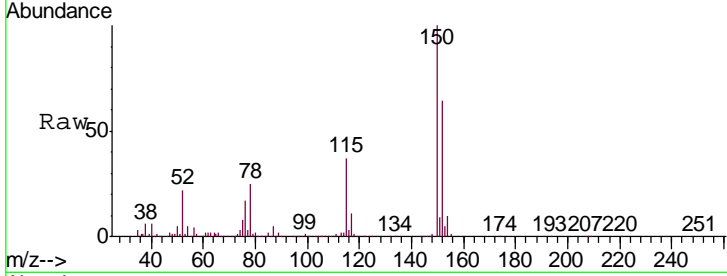




#72
 1,4-Dichlorobenzene-d4
 Concen: 50.000 ug/l
 RT: 13.56 min Scan# 1912
 Delta R.T. 0.00 min
 Lab File: VW008741.D
 Acq: 18 Feb 2019 20:54

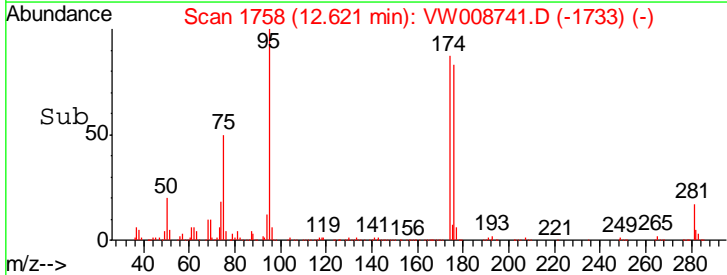
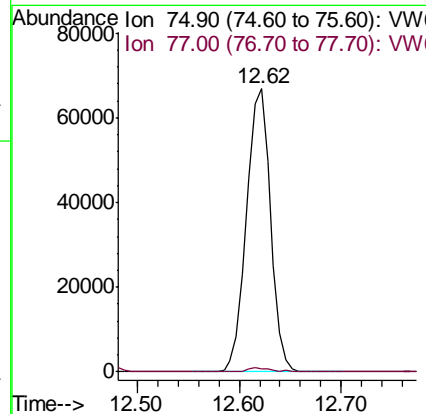
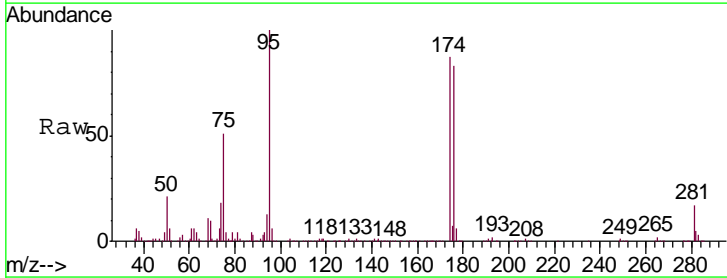
Instrument : MSVOA_W
 ClientSampled : CABLE-BRIDGE-FOUNDATION-B-10

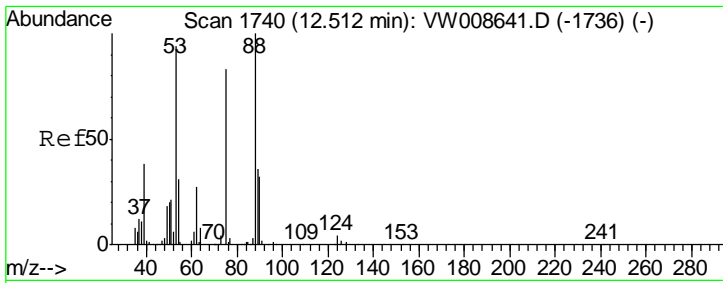
Tgt Ion	Resp	Lower	Upper
152	100		
115	57.7	29.3	87.8
150	160.0	0.0	352.8



#76
 1,2,3-Trichloropropane
 Concen: 52.939 ug/l
 RT: 12.62 min Scan# 1758
 Delta R.T. -0.15 min
 Lab File: VW008741.D
 Acq: 18 Feb 2019 20:54

Tgt Ion	Resp	Lower	Upper
75	100		
77	1.5	0.0	0.0#

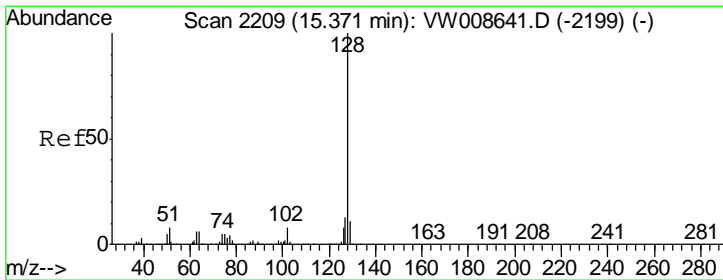
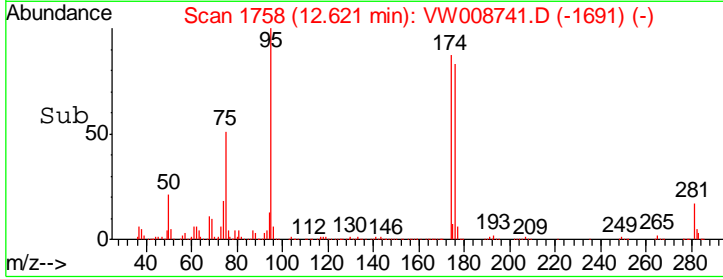
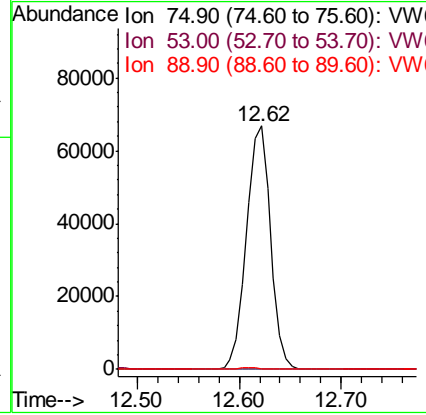
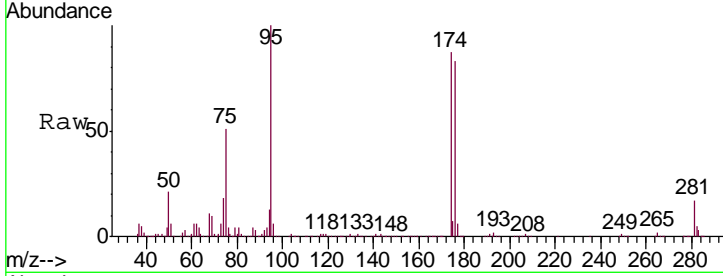




#81
 trans-1,4-Dichloro-2-butene
 Concen: 113.358 ug/l
 RT: 12.62 min Scan# 1758
 Delta R.T. 0.11 min
 Lab File: VW008741.D
 Acq: 18 Feb 2019 20:54

Instrument : MSVOA_W
 ClientSampled : CABLE-BRIDGE-FOUNDATION-B-10

Tgt Ion	Resp	Lower	Upper
75	100		
53	0.1	87.4	131.0#
89	0.7	37.0	55.4#



#95
 Naphthalene
 Concen: 1.018 ug/l
 RT: 15.37 min Scan# 2209
 Delta R.T. 0.00 min
 Lab File: VW008741.D
 Acq: 18 Feb 2019 20:54

Tgt Ion	Resp	Lower	Upper
128	100		
127	16.3	10.9	16.3
129	11.2	8.7	13.1

