

Data File : VW008756.D
 Acq On : 20 Feb 2019 12:57
 Operator : SY/VA
 Sample : VSTD10085
 Misc : 5.00G/10ML/MSVOA_W/SOIL
 ALS Vial : 1 Sample Multiplier: 1

Instrument :
 MSVOA_W
 ClientSampleId :
 VSTD10005

Quant Time: Feb 20 13:21:29 2019
 Quant Method : Z:\VOASRV\HPCHEM1\MSVOA_W\METHOD\SOM2WLM022019S.M
 Quant Title : VOC Analysis
 QLast Update : Wed Feb 20 11:29:15 2019
 Response via : Initial Calibration

Internal Standards	R.T.	QIon	Response	Conc	Units	Dev(Min)
1) 1,4-Difluorobenzene	8.84	114	432901	25.00	ug/L	0.00
28) Chlorobenzene-d5	11.63	117	434683	25.00	ug/L	0.00
60) 1,4-Dichlorobenzene-d4	13.56	152	243322	25.00	ug/L	0.00

System Monitoring Compounds

4) Vinyl Chloride-d3	2.35	65	655420	153.63	ug/L	-0.01
7) Chloroethane-d5	2.87	69	605258	210.58	ug/L	-0.02
10) 1,1-Dichloroethene-d2	4.01	63	1129226	97.77	ug/L	0.00
20) 2-Butanone-d5	7.07	46	462147	254.00	ug/L	0.00
24) Chloroform-d	7.65	84	1115985	96.90	ug/L	0.00
26) 1,2-Dichloroethane-d4	8.31	65	662057	95.88	ug/L	0.00
29) Benzene-d6	8.27	84	2088778	85.68	ug/L	0.00
33) 1,2-Dichloropropane-d6	9.27	67	619407	93.41	ug/L	0.00
37) Toluene-d8	10.32	98	2139265	90.07	ug/L	0.00
38) trans-1,3-Dichloropropene-	10.58	79	330744	86.88	ug/L	0.00
39) 2-Hexanone-d5	10.93	63	388406	228.99	ug/L	0.00
48) 1,1,2,2-Tetrachloroethane-	12.69	84	662902	103.88	ug/L	0.00
61) 1,2-Dichlorobenzene-d4	13.86	152	891135	90.67	ug/L	0.00

Target Compounds

						Qvalue
2) Dichlorodifluoromethane	2.00	85	838763	175.801	ug/L	94
3) Chloromethane	2.21	50	881893	234.545	ug/L	98
5) Vinyl chloride	2.35	62	936906	200.311	ug/L	99
6) Bromomethane	2.81	94	13178	4.749	ug/L	85
8) Chloroethane	2.90	64	620755	267.117	ug/L	97
9) Trichlorofluoromethane	3.25	101	1087556	269.266	ug/L	99
11) 1,1,2-Trichloro-1,2,2-trif	4.06	101	644069	117.857	ug/L	97
12) 1,1-Dichloroethene	4.04	96	564243	112.753	ug/L	85
13) Acetone	4.12	43	341891	192.331	ug/L	100
14) Carbon disulfide	4.37	76	2054477	129.620	ug/L	100
15) Methyl Acetate	4.67	43	411670	152.187	ug/L	94
16) Methylene chloride	4.92	84	639561	91.303	ug/L	91
17) Methyl tert-butyl Ether	5.43	73	1672835	188.075	ug/L	98
18) trans-1,2-Dichloroethene	5.42	96	638227	117.576	ug/L	94
19) 1,1-Dichloroethane	6.21	63	1087167	120.386	ug/L	97
21) 2-Butanone	7.17	43	540097	267.018	ug/L	95
22) cis-1,2-Dichloroethene	7.17	96	689305	118.505	ug/L	90
23) Bromochloromethane	7.51	128	318774	121.723	ug/L #	85
25) Chloroform	7.67	83	1150423	113.112	ug/L	100
27) 1,2-Dichloroethane	8.40	62	838146	112.359	ug/L #	94
30) Cyclohexane	7.95	56	1041439	108.902	ug/L	95
31) 1,1,1-Trichloroethane	7.87	97	1016656	97.553	ug/L	97
32) Carbon tetrachloride	8.07	117	926161	92.565	ug/L	99
34) Benzene	8.32	78	2378769	102.267	ug/L	100
35) Trichloroethene	9.09	95	628095	92.941	ug/L	96
36) Methylcyclohexane	9.34	83	1154154	99.592	ug/L	96
40) 1,2-Dichloropropane	9.37	63	600788	109.878	ug/L	100
41) Bromodichloromethane	9.64	83	849612	105.655	ug/L	100
42) cis-1,3-Dichloropropene	10.07	75	1019872	106.855	ug/L	97
43) 4-Methyl-2-pentanone	10.21	43	1162723	268.678	ug/L	96

Data File : VW008756.D
 Acq On : 20 Feb 2019 12:57
 Operator : SY/VA
 Sample : VSTD10085
 Misc : 5.00G/10ML/MSVOA_W/SOIL
 ALS Vial : 1 Sample Multiplier: 1

Instrument :
 MSVOA_W
 ClientSampleId :
 VSTD10005

Quant Time: Feb 20 13:21:29 2019
 Quant Method : Z:\VOASRV\HPCHEM1\MSVOA_W\METHOD\SOM2WLM022019S.M
 Quant Title : VOC Analysis
 QLast Update : Wed Feb 20 11:29:15 2019
 Response via : Initial Calibration

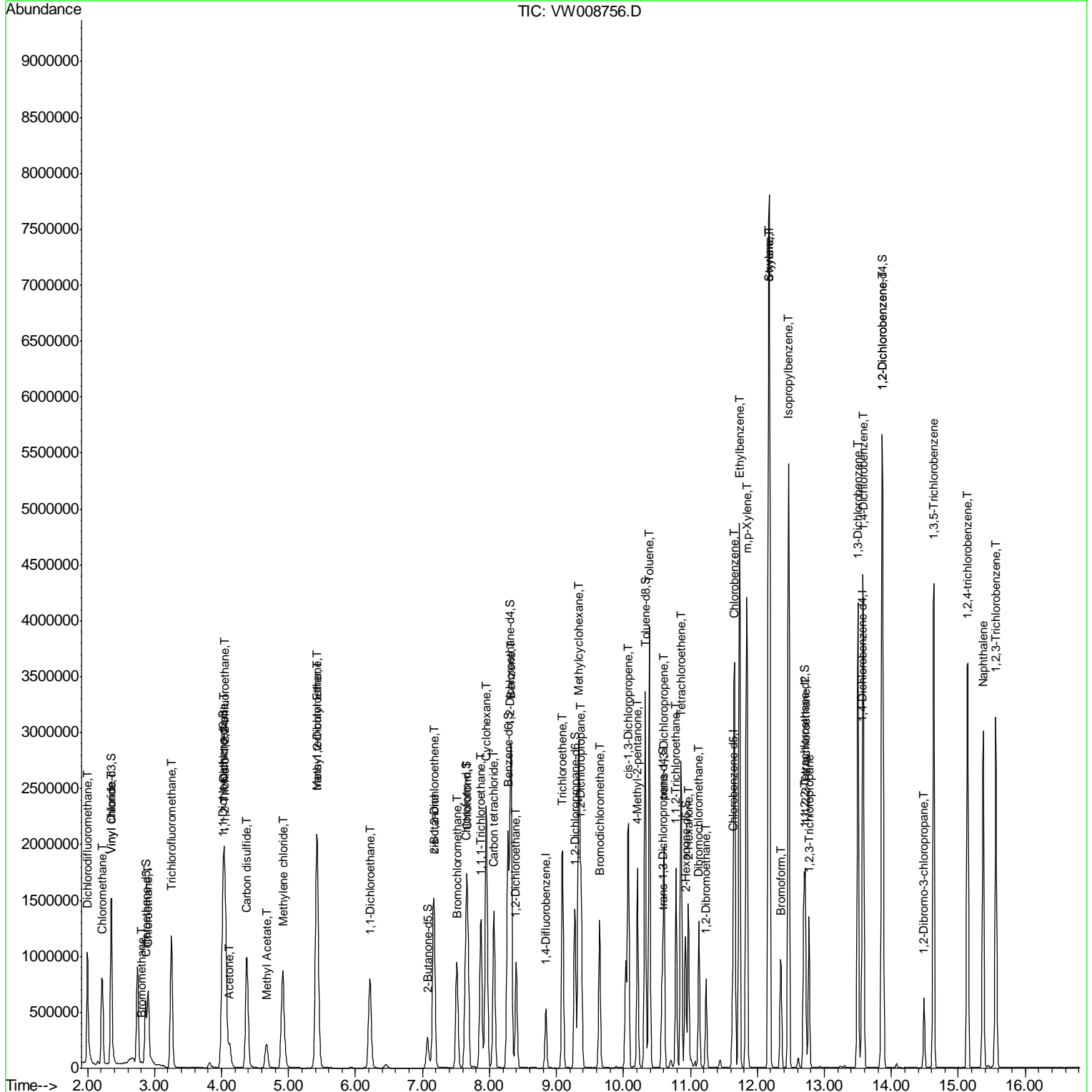
Internal Standards	R.T.	QIon	Response	Conc	Units	Dev(Min)
44) Toluene	10.39	91	2772329	106.529	ug/L	98
45) trans-1,3-Dichloropropene	10.60	75	926650	105.366	ug/L	98
46) 1,1,2-Trichloroethane	10.79	97	497380	107.523	ug/L	97
47) Tetrachloroethene	10.86	164	572932	106.704	ug/L	94
49) 2-Hexanone	10.97	43	918282	294.113	ug/L #	91
50) Dibromochloromethane	11.13	129	645864	109.592	ug/L	96
51) 1,2-Dibromoethane	11.24	107	510843	108.200	ug/L	96
52) Chlorobenzene	11.66	112	1830245	108.037	ug/L	99
53) Ethylbenzene	11.73	91	3279115	109.669	ug/L	99
54) m,p-Xylene	11.84	106	1292913	114.772	ug/L	94
55) o-xylene	12.16	106	1300709	121.746	ug/L	94
56) Styrene	12.18	104	2269133	125.310	ug/L	98
57) Isopropylbenzene	12.47	105	3408099	112.613	ug/L	99
58) 1,1,2,2-Tetrachloroethane	12.71	83	692086	120.665	ug/L	98
59) 1,2,3-Trichloropropane	12.77	75	508825	110.292	ug/L	100
62) Bromoform	12.35	173	424371	110.632	ug/L #	98
63) 1,3-Dichlorobenzene	13.50	146	1609646	103.476	ug/L	96
64) 1,4-Dichlorobenzene	13.58	146	1624436	105.010	ug/L	96
65) 1,2-Dichlorobenzene	13.87	146	1503622	106.477	ug/L	96
66) 1,2-Dibromo-3-chloropropan	14.49	75	139126	99.929	ug/L	94
67) 1,3,5-Trichlorobenzene	14.63	180	1304026	114.454	ug/L	98
68) 1,2,4-trichlorobenzene	15.14	180	1151145	117.703	ug/L	97
69) Naphthalene	15.37	128	2475200	111.807	ug/L	99
70) 1,2,3-Trichlorobenzene	15.56	180	1033514	119.373	ug/L	97

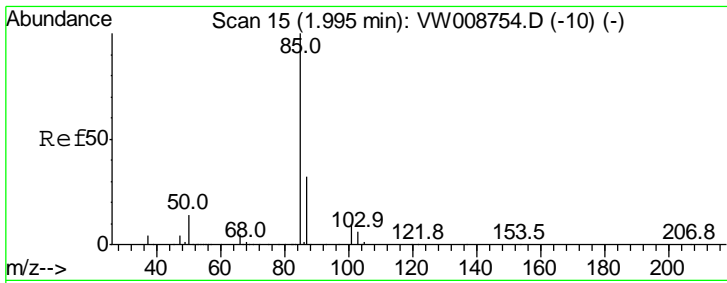
(#) = qualifier out of range (m) = manual integration (+) = signals summed

Data File : VW008756.D
Acq On : 20 Feb 2019 12:57
Operator : SY/VA
Sample : VSTD10085
Misc : 5.00G/10ML/MSVOA_W/SOIL
ALS Vial : 1 Sample Multiplier: 1

Instrument :
MSVOA_W
Client Sampled :
VSTD10005

Quant Time: Feb 20 13:21:29 2019
Quant Method : Z:\VOASRV\HPCHEM1\MSVOA_W\METHOD\SOM2WLM022019S.M
Quant Title : VOC Analysis
QLast Update : Wed Feb 20 11:29:15 2019
Response via : Initial Calibration

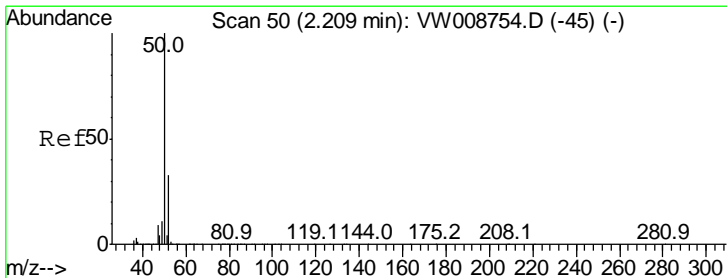
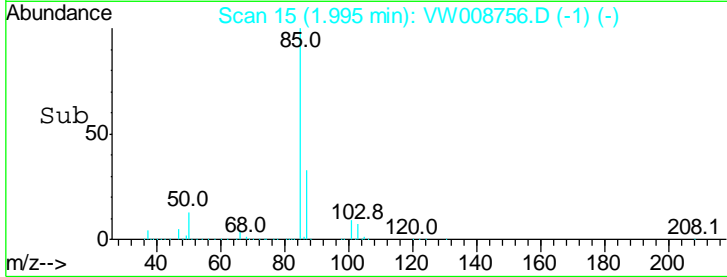
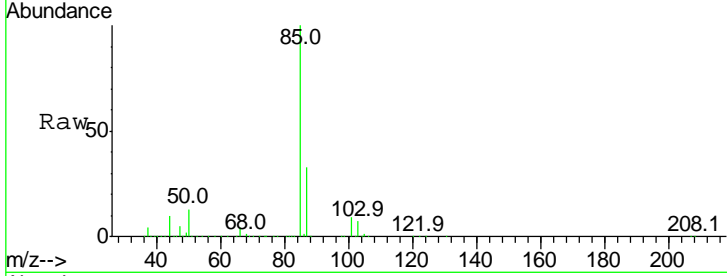




#2
 Dichlorodifluoromethane
 Concen: 175.801 ug/L
 RT: 2.00 min Scan# 15
 Delta R.T. -0.02 min
 Lab File: VW008756.D
 Acq: 20 Feb 2019 12:57

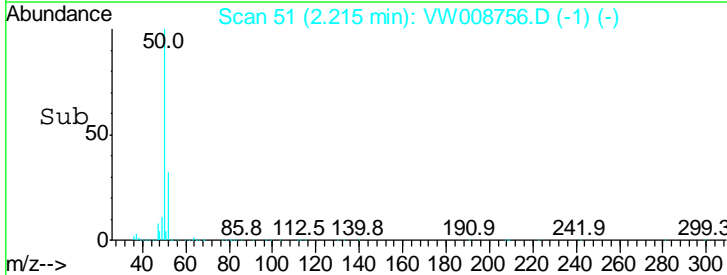
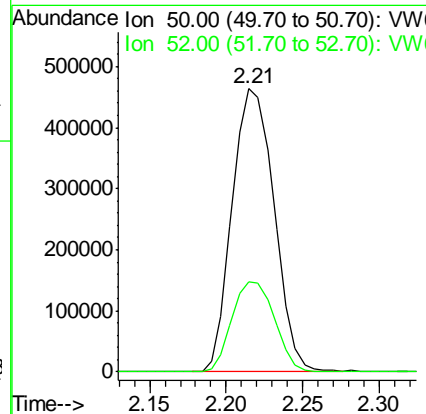
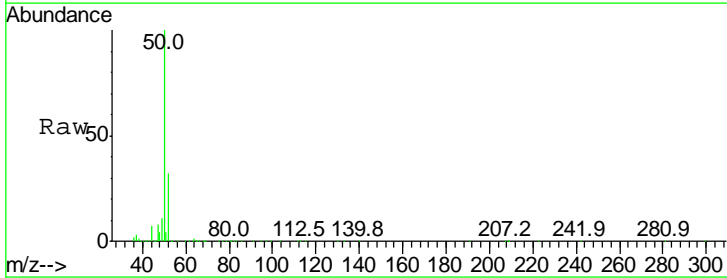
Instrument :
 MSVOA_W
ClientSampled :
 VSTD10005

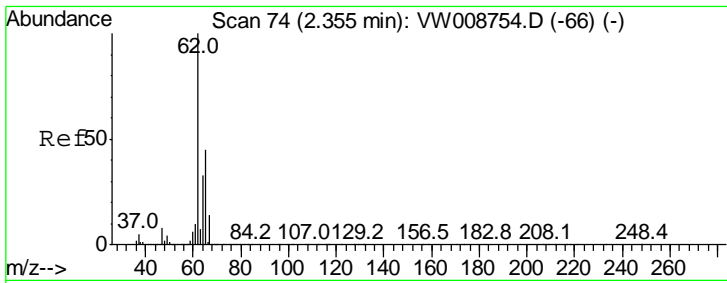
Tgt Ion: 85 Resp: 838763
 Ion Ratio Lower Upper
 85 100
 87 32.7 20.6 38.4



#3
 Chloromethane
 Concen: 234.545 ug/L
 RT: 2.21 min Scan# 51
 Delta R.T. -0.00 min
 Lab File: VW008756.D
 Acq: 20 Feb 2019 12:57

Tgt Ion: 50 Resp: 881893
 Ion Ratio Lower Upper
 50 100
 52 31.7 21.4 39.8

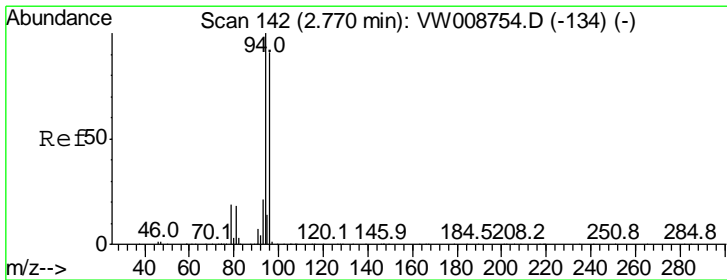
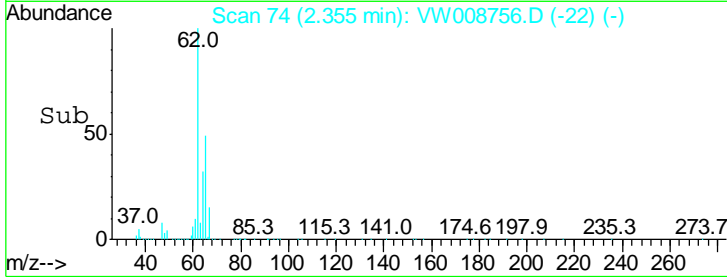
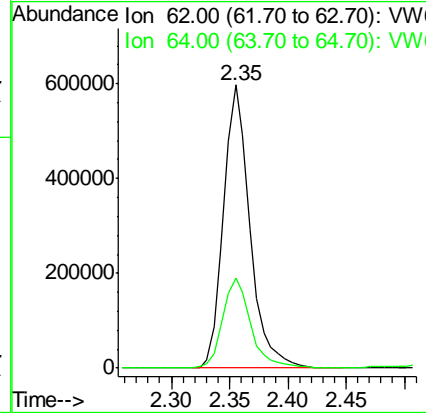
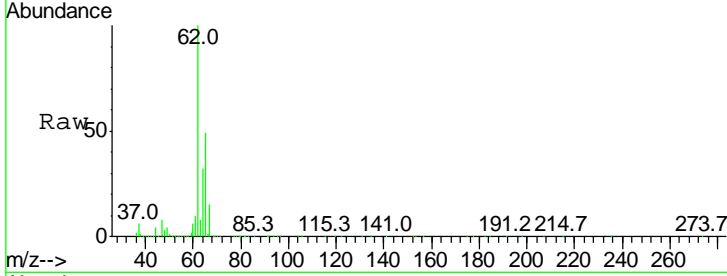




#5
 Vinyl chloride
 Concen: 200.311 ug/L
 RT: 2.35 min Scan# 74
 Delta R.T. -0.01 min
 Lab File: VW008756.D
 Acq: 20 Feb 2019 12:57

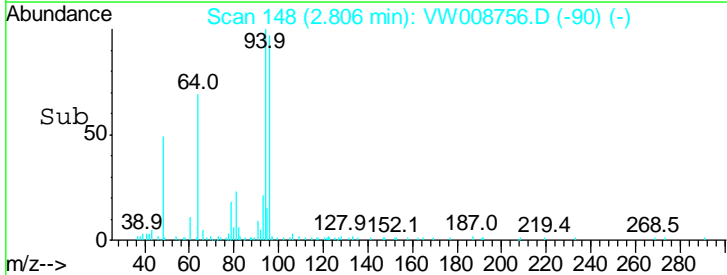
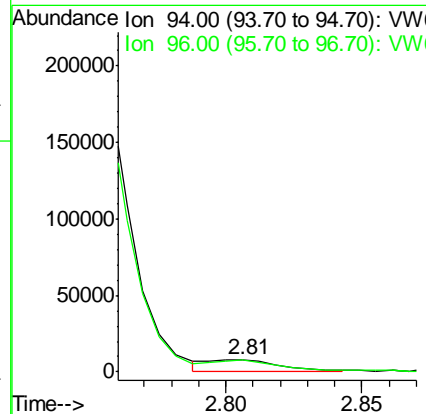
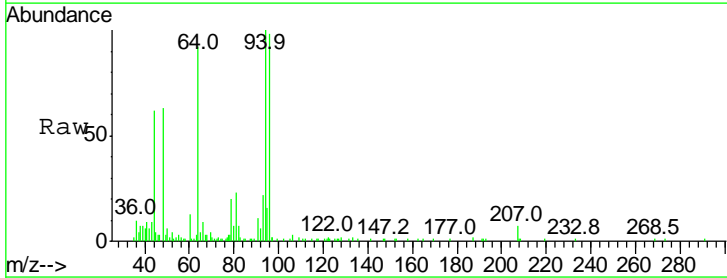
Instrument :
 MSVOA_W
 ClientSampled :
 VSTD10005

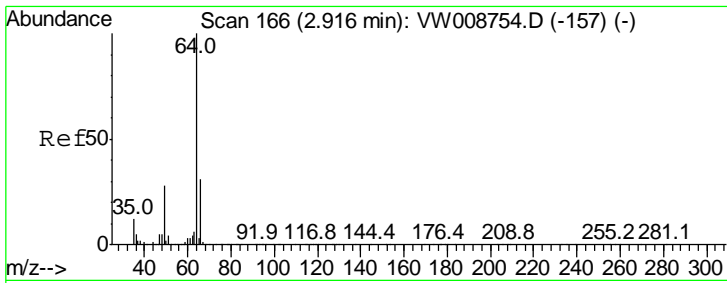
Tgt Ion: 62 Resp: 936906
 Ion Ratio Lower Upper
 62 100
 64 31.8 22.0 41.0



#6
 Bromomethane
 Concen: 4.749 ug/L
 RT: 2.81 min Scan# 148
 Delta R.T. 0.02 min
 Lab File: VW008756.D
 Acq: 20 Feb 2019 12:57

Tgt Ion: 94 Resp: 13178
 Ion Ratio Lower Upper
 94 100
 96 106.5 9.2 175.4

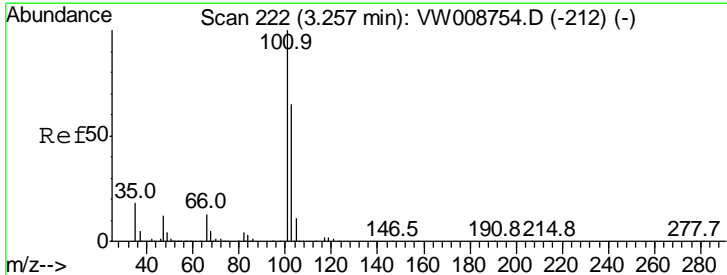
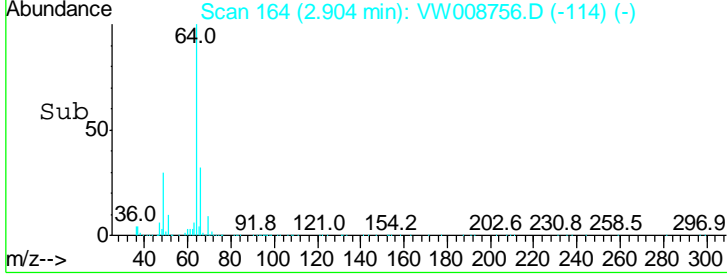
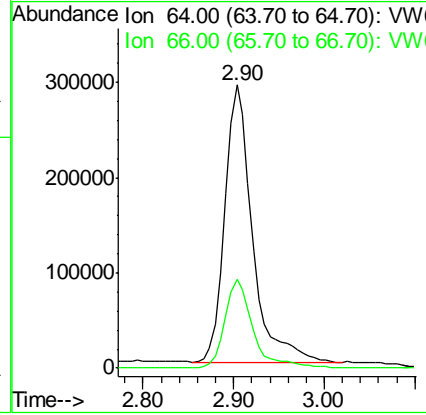
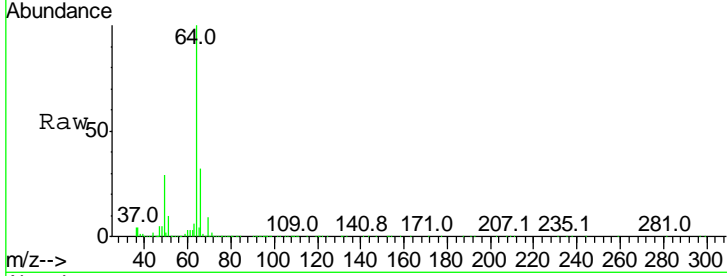




#8
 Chloroethane
 Concen: 267.117 ug/L
 RT: 2.90 min Scan# 164
 Delta R.T. -0.02 min
 Lab File: VW008756.D
 Acq: 20 Feb 2019 12:57

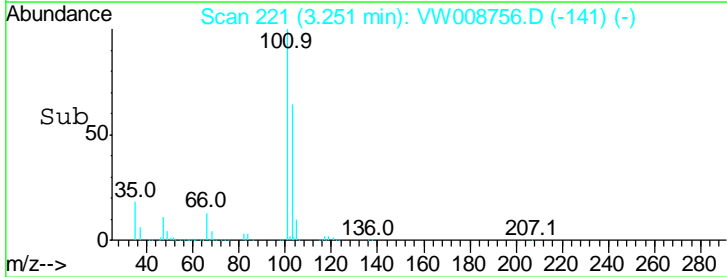
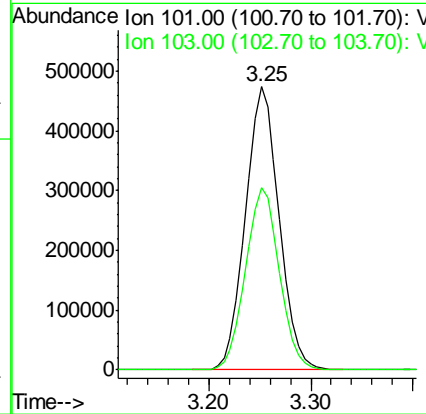
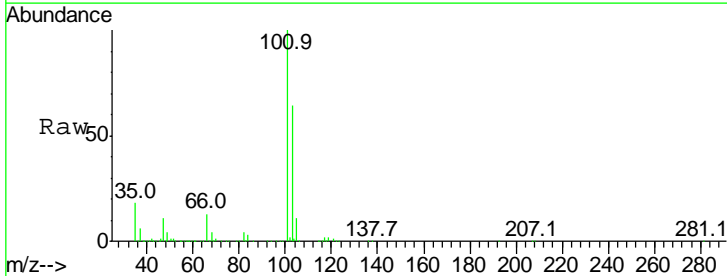
Instrument :
 MSVOA_W
ClientSampled :
 VSTD10005

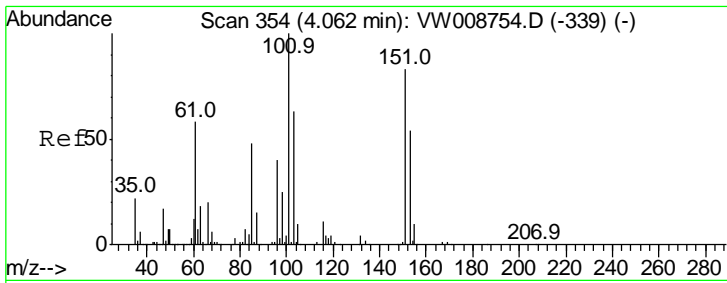
Tgt Ion: 64 Resp: 620755
 Ion Ratio Lower Upper
 64 100
 66 31.6 23.3 43.3



#9
 Trichlorofluoromethane
 Concen: 269.266 ug/L
 RT: 3.25 min Scan# 221
 Delta R.T. -0.01 min
 Lab File: VW008756.D
 Acq: 20 Feb 2019 12:57

Tgt Ion: 101 Resp: 1087556
 Ion Ratio Lower Upper
 101 100
 103 64.7 44.7 83.1

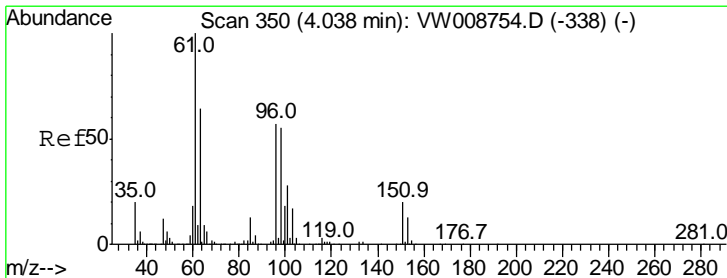
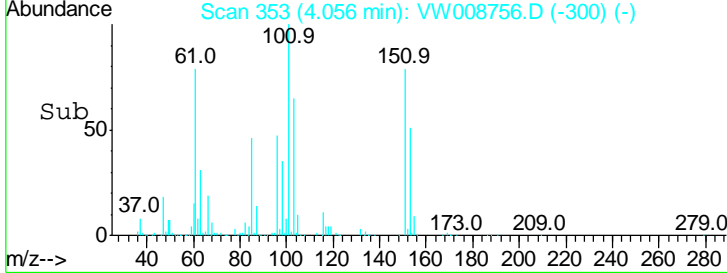
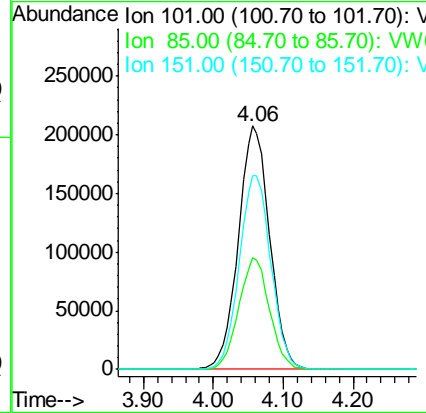
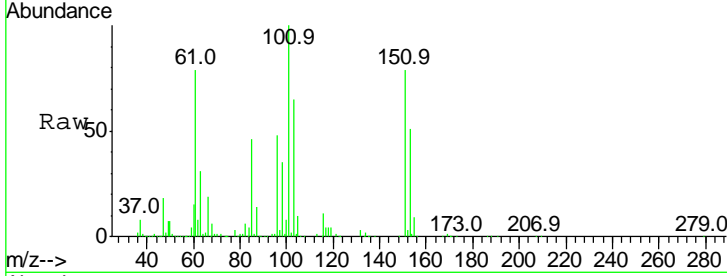




#11
 1,1,2-Trichloro-1,2,2-trifluoroethane
 Concen: 117.857 ug/L
 RT: 4.06 min Scan# 353
 Delta R.T. -0.01 min
 Lab File: VW008756.D
 Acq: 20 Feb 2019 12:57

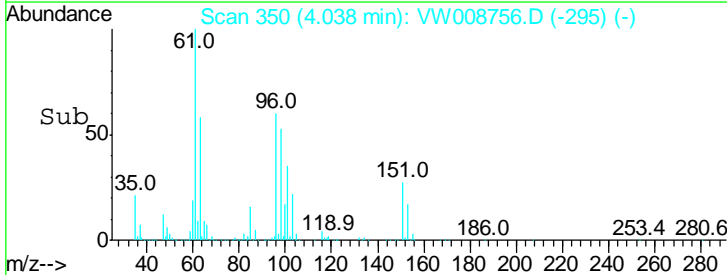
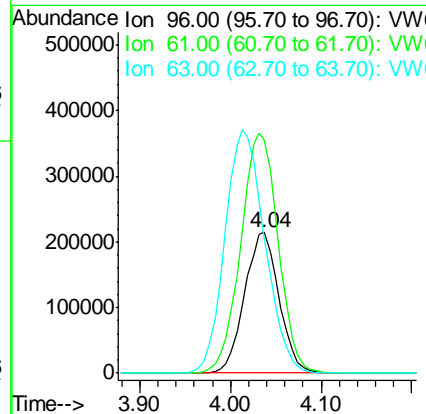
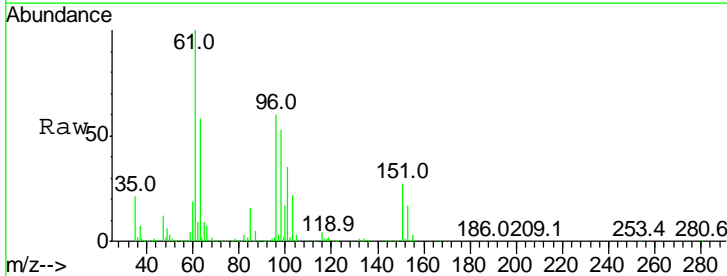
Instrument :
 MSVOA_W
ClientSampled :
 VSTD10005

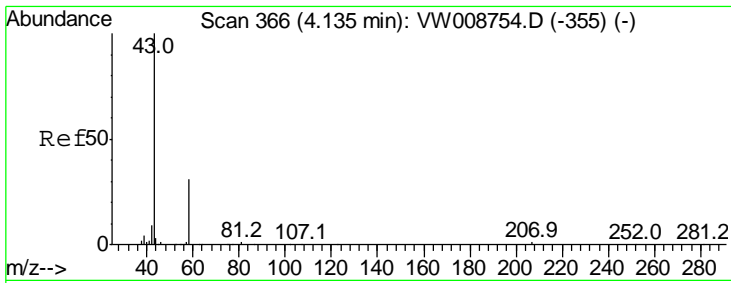
Tgt Ion	Resp	Lower	Upper
101	644069		
101	100		
85	44.9	33.4	50.2
151	80.4	63.2	94.8



#12
 1,1-Dichloroethene
 Concen: 112.753 ug/L
 RT: 4.04 min Scan# 350
 Delta R.T. 0.01 min
 Lab File: VW008756.D
 Acq: 20 Feb 2019 12:57

Tgt Ion	Resp	Lower	Upper
96	564243		
96	100		
61	165.7	120.3	223.3
63	96.2	91.6	170.0

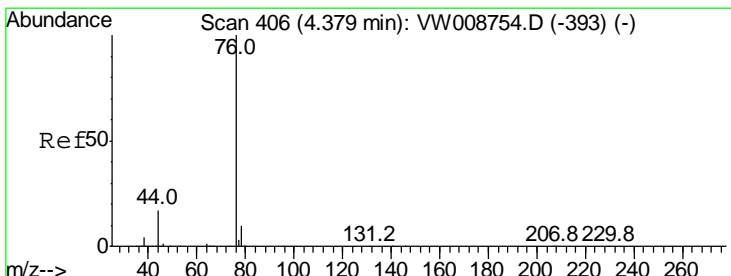
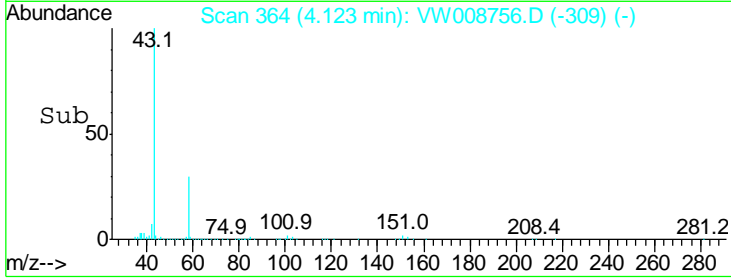
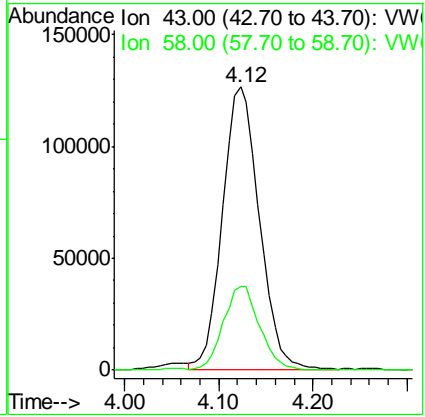
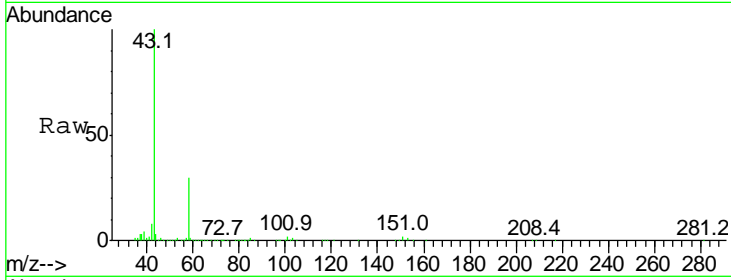




#13
 Acetone
 Concen: 192.331 ug/L
 RT: 4.12 min Scan# 364
 Delta R.T. 0.01 min
 Lab File: VW008756.D
 Acq: 20 Feb 2019 12:57

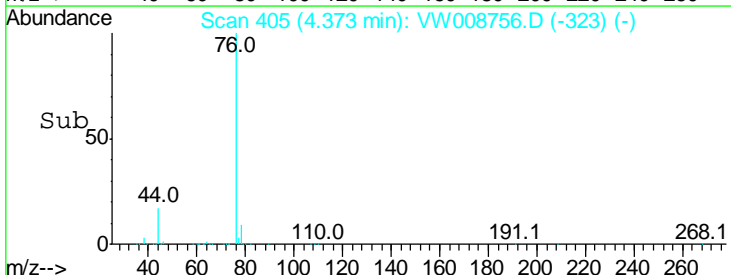
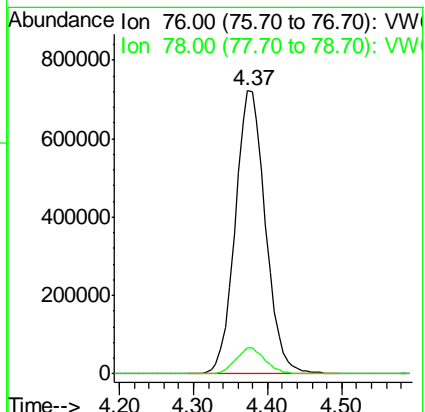
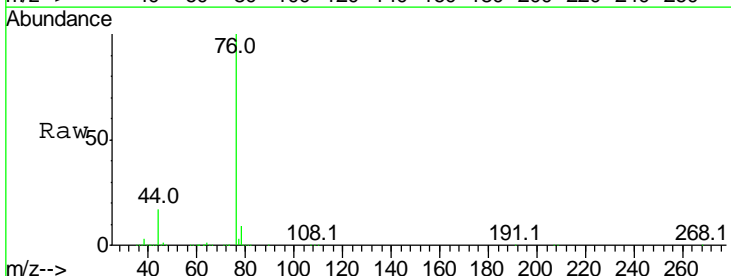
Instrument :
 MSVOA_W
ClientSampled :
 VSTD10005

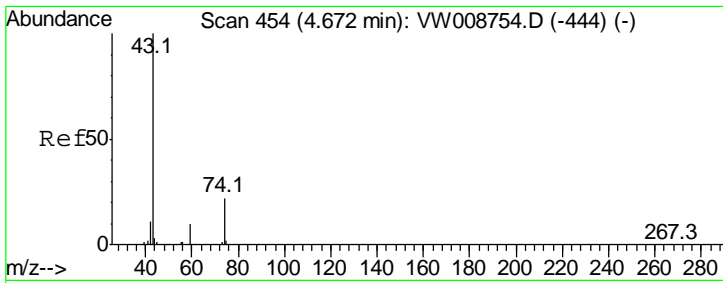
Tgt Ion	Resp	Lower	Upper
43	100	0.0	58.6
58	29.2		



#14
 Carbon disulfide
 Concen: 129.620 ug/L
 RT: 4.37 min Scan# 405
 Delta R.T. -0.00 min
 Lab File: VW008756.D
 Acq: 20 Feb 2019 12:57

Tgt Ion	Resp	Lower	Upper
76	100	7.5	11.3
78	9.4		

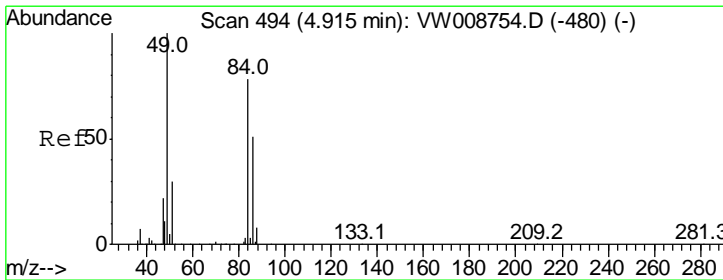
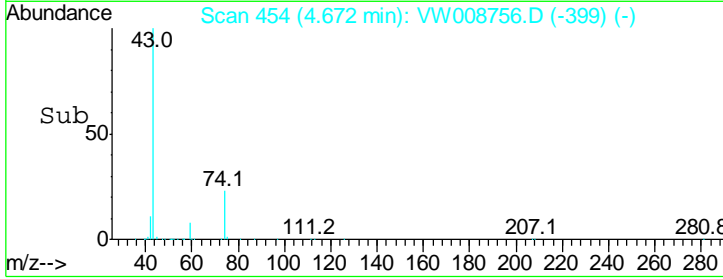
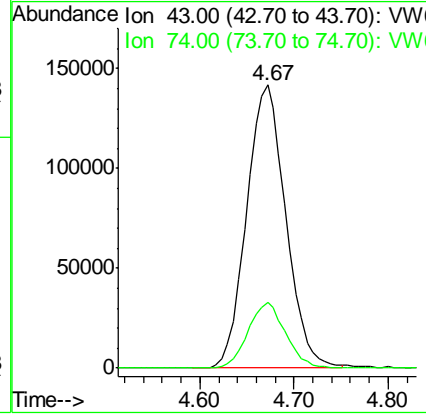
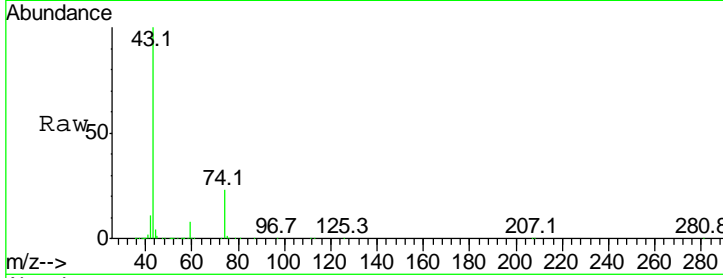




#15
 Methyl Acetate
 Concen: 152.187 ug/L
 RT: 4.67 min Scan# 454
 Delta R.T. 0.01 min
 Lab File: VW008756.D
 Acq: 20 Feb 2019 12:57

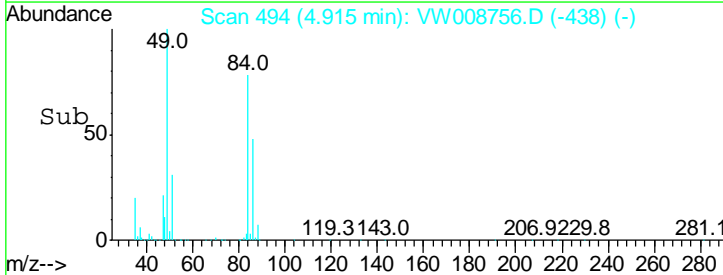
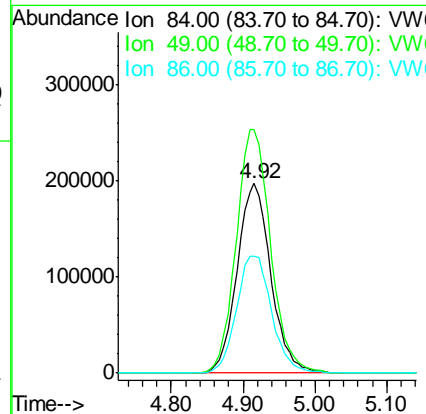
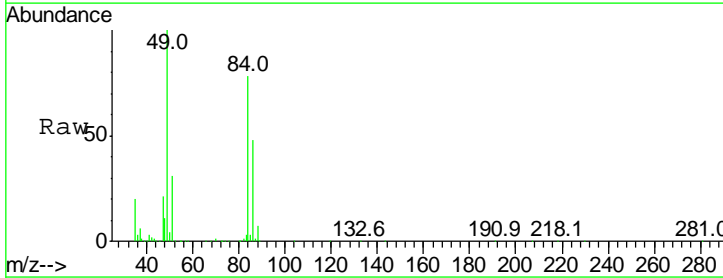
Instrument :
 MSVOA_W
 ClientSampled :
 VSTD10005

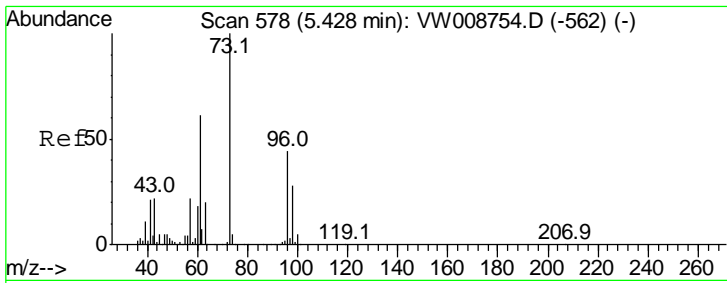
Tgt Ion: 43 Resp: 411670
 Ion Ratio Lower Upper
 43 100
 74 22.4 20.2 30.2



#16
 Methylene chloride
 Concen: 91.303 ug/L
 RT: 4.92 min Scan# 494
 Delta R.T. 0.01 min
 Lab File: VW008756.D
 Acq: 20 Feb 2019 12:57

Tgt Ion: 84 Resp: 639561
 Ion Ratio Lower Upper
 84 100
 49 128.6 79.2 147.0
 86 61.9 43.2 80.2

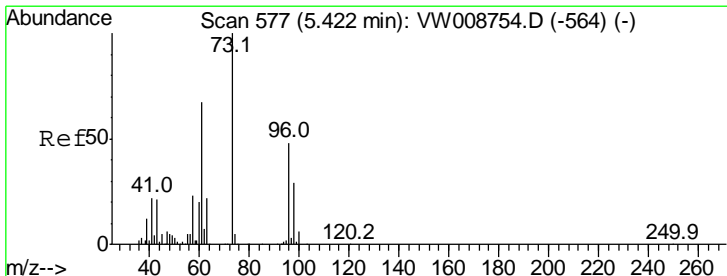
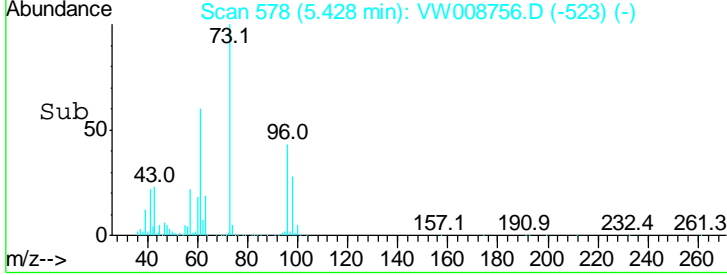
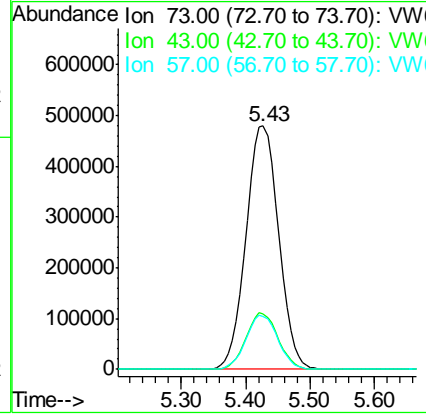
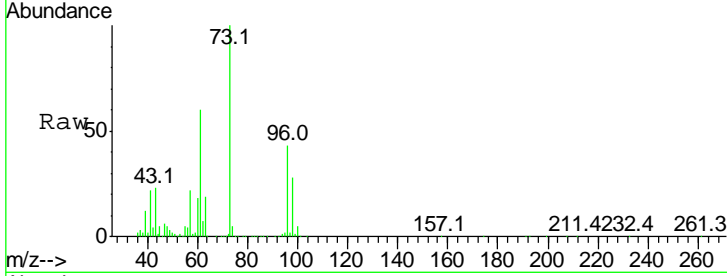




#17
 Methyl tert-butyl Ether
 Concen: 188.075 ug/L
 RT: 5.43 min Scan# 578
 Delta R.T. 0.01 min
 Lab File: VW008756.D
 Acq: 20 Feb 2019 12:57

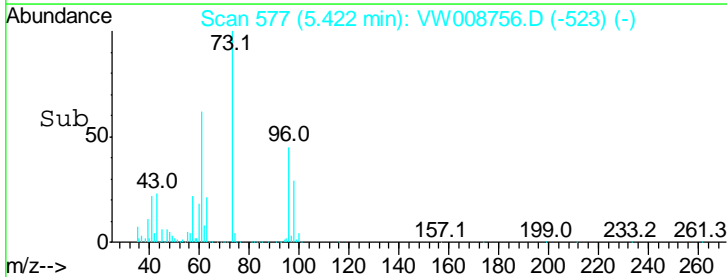
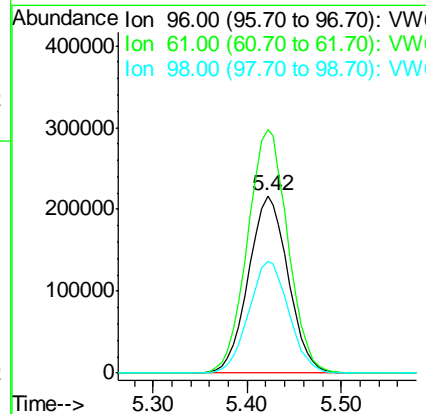
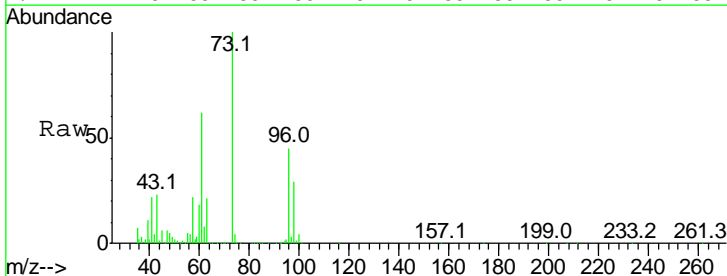
Instrument :
 MSVOA_W
ClientSampled :
 VSTD10005

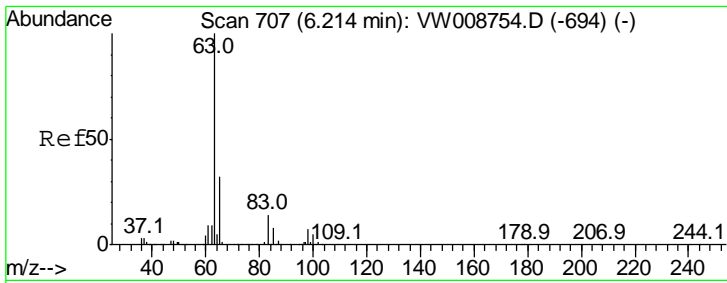
Tgt Ion	Resp	Lower	Upper
73	1672835		
73	100		
43	22.7	18.5	27.7
57	21.7	16.4	24.6



#18
 trans-1,2-Dichloroethene
 Concen: 117.576 ug/L
 RT: 5.42 min Scan# 577
 Delta R.T. -0.00 min
 Lab File: VW008756.D
 Acq: 20 Feb 2019 12:57

Tgt Ion	Resp	Lower	Upper
96	638227		
96	100		
61	137.0	91.4	169.8
98	63.2	48.0	89.2

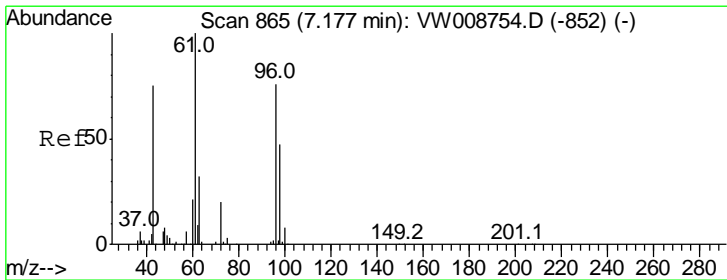
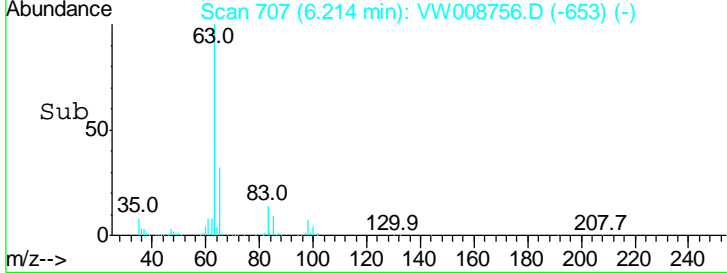
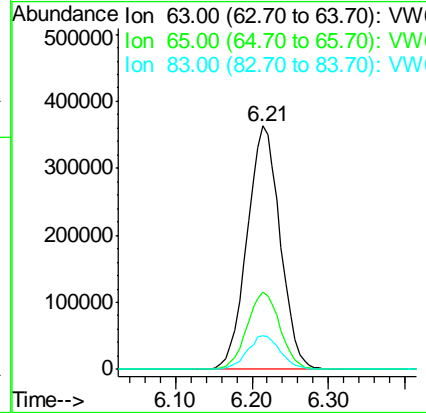
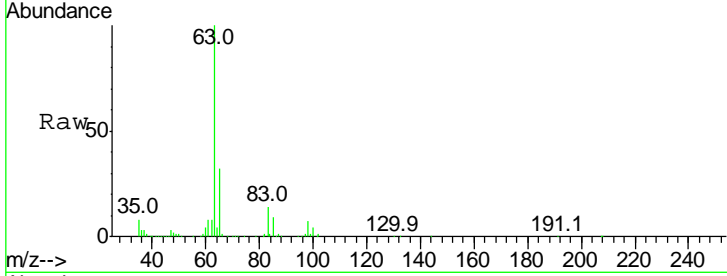




#19
 1,1-Dichloroethane
 Concen: 120.386 ug/L
 RT: 6.21 min Scan# 707
 Delta R.T. -0.00 min
 Lab File: VW008756.D
 Acq: 20 Feb 2019 12:57

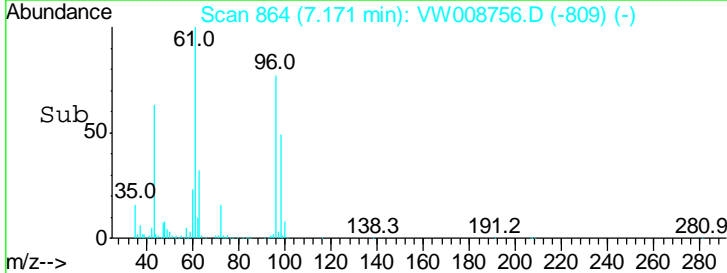
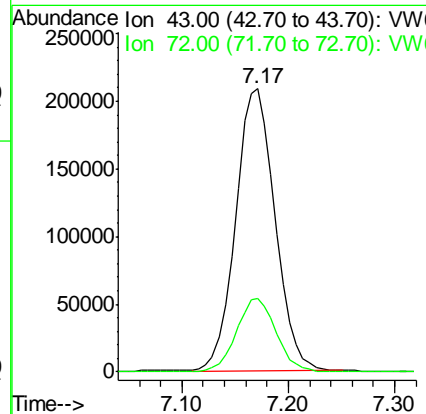
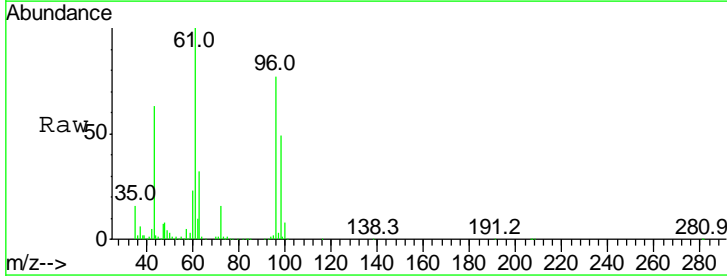
Instrument :
 MSVOA_W
 ClientSampled :
 VSTD10005

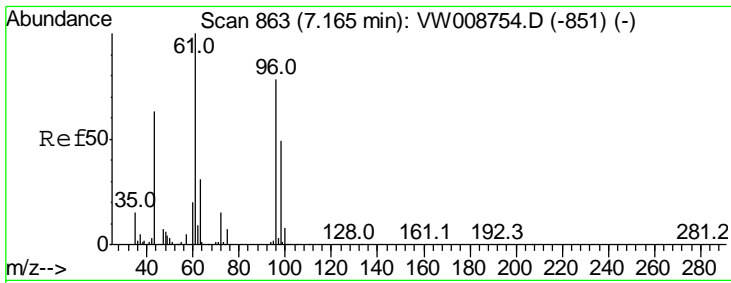
Tgt Ion	Resp	Lower	Upper
63	1087167		
63	100		
65	31.5	20.6	38.4
83	13.8	10.0	18.6



#21
 2-Butanone
 Concen: 267.018 ug/L
 RT: 7.17 min Scan# 864
 Delta R.T. 0.01 min
 Lab File: VW008756.D
 Acq: 20 Feb 2019 12:57

Tgt Ion	Resp	Lower	Upper
43	540097		
43	100		
72	26.4	14.4	43.4

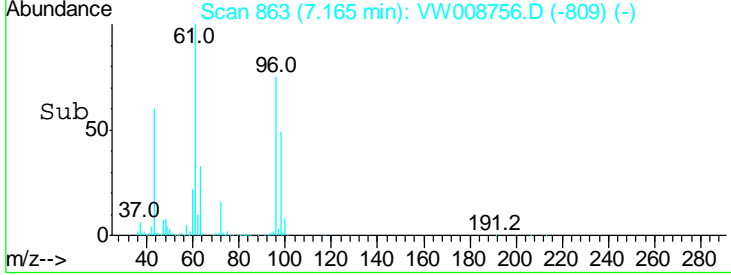
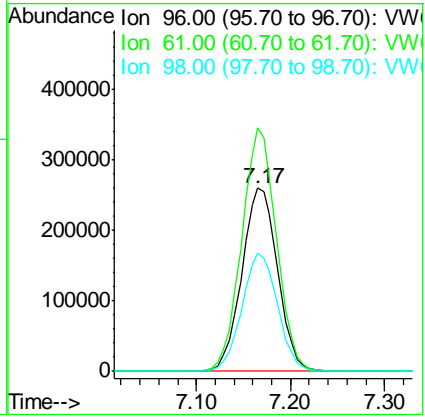
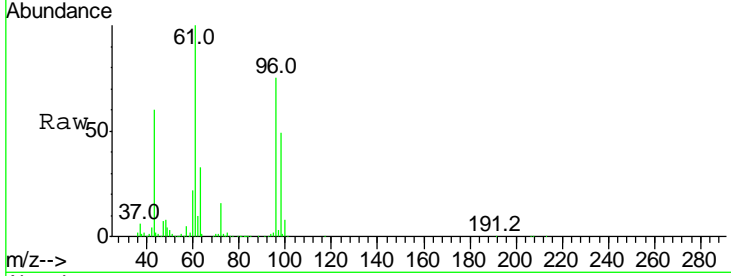




#22
 cis-1,2-Dichloroethene
 Concen: 118.505 ug/L
 RT: 7.17 min Scan# 863
 Delta R.T. -0.00 min
 Lab File: VW008756.D
 Acq: 20 Feb 2019 12:57

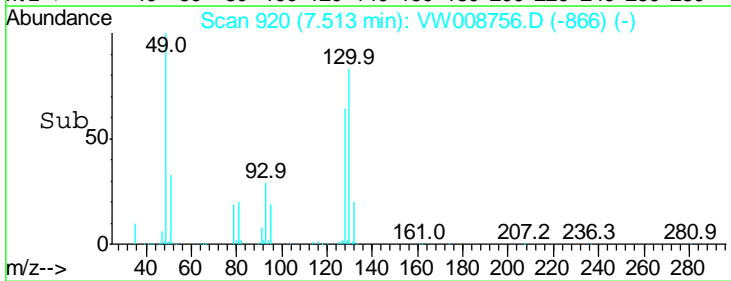
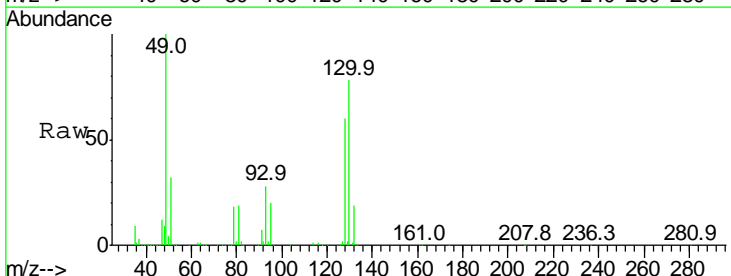
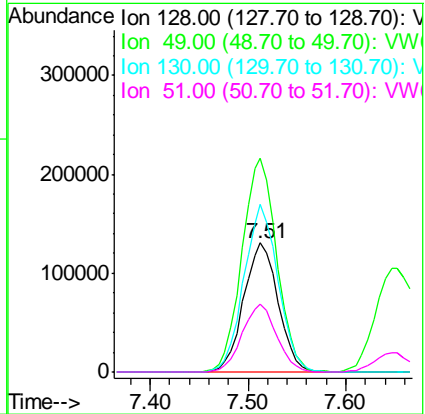
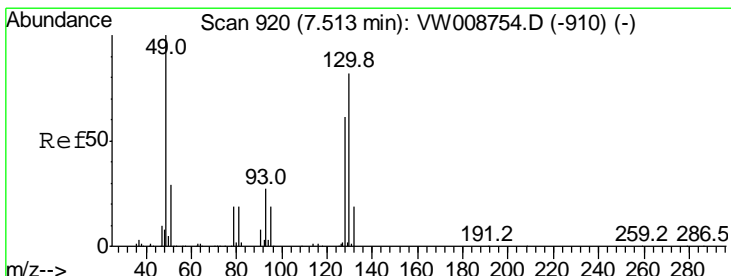
Instrument :
 MSVOA_W
ClientSampled :
 VSTD10005

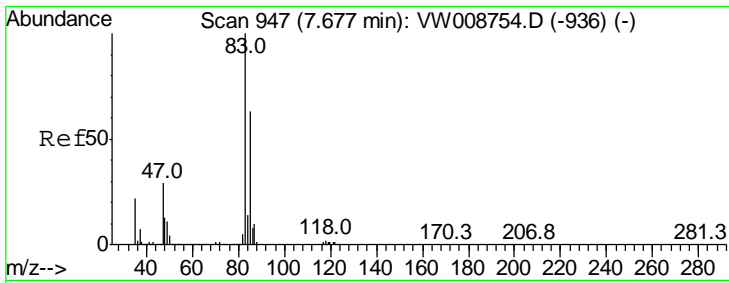
Tgt Ion	Resp	Lower	Upper
96	689305		
61	132.8	83.4	155.0
98	64.5	42.3	78.5



#23
 Bromochloromethane
 Concen: 121.723 ug/L
 RT: 7.51 min Scan# 920
 Delta R.T. -0.00 min
 Lab File: VW008756.D
 Acq: 20 Feb 2019 12:57

Tgt Ion	Resp	Lower	Upper
128	318774		
49	165.6	96.9	180.1
130	129.9	86.2	160.0
51	52.7	33.5	50.3#

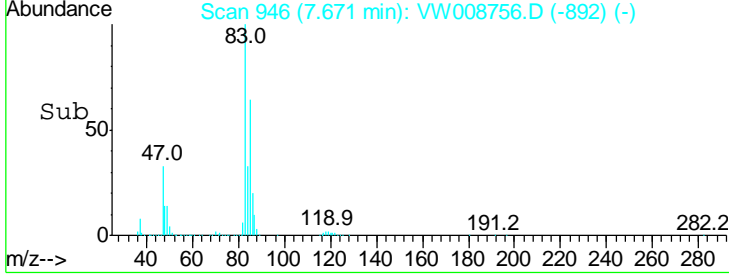
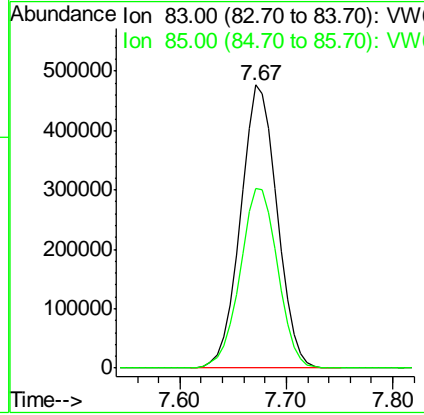
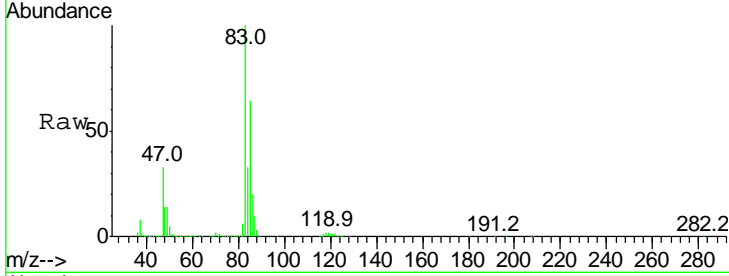




#25
 Chloroform
 Concen: 113.112 ug/L
 RT: 7.67 min Scan# 946
 Delta R.T. -0.00 min
 Lab File: VW008756.D
 Acq: 20 Feb 2019 12:57

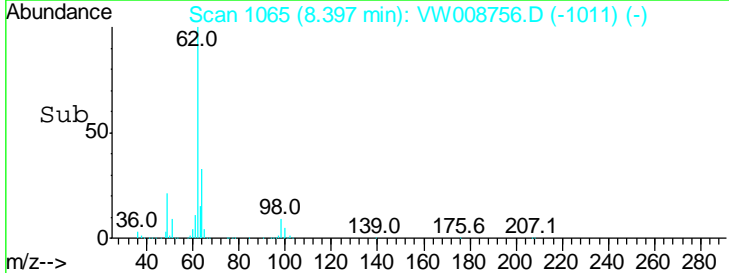
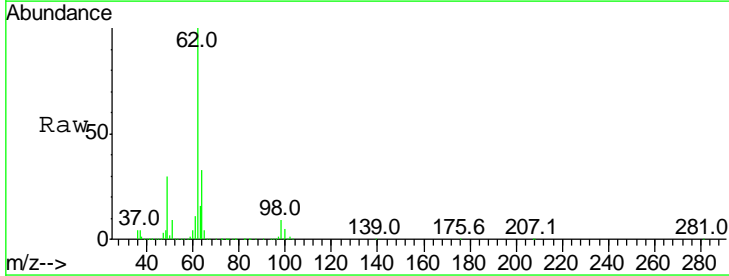
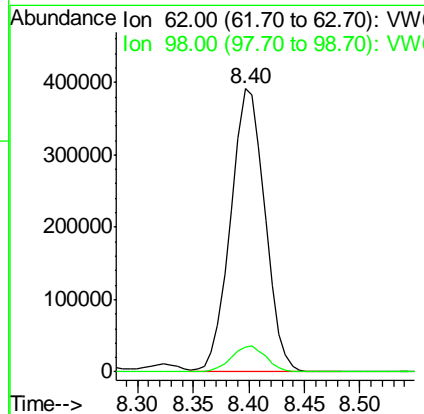
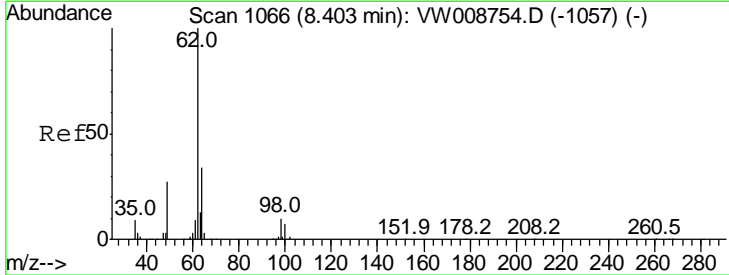
Instrument :
 MSVOA_W
ClientSampled :
 VSTD10005

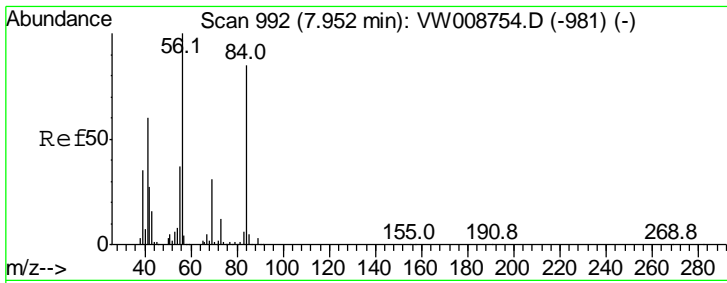
Tgt Ion: 83 Resp: 1150423
 Ion Ratio Lower Upper
 83 100
 85 65.4 45.8 85.2



#27
 1,2-Dichloroethane
 Concen: 112.359 ug/L
 RT: 8.40 min Scan# 1065
 Delta R.T. -0.00 min
 Lab File: VW008756.D
 Acq: 20 Feb 2019 12:57

Tgt Ion: 62 Resp: 838146
 Ion Ratio Lower Upper
 62 100
 98 8.9 5.4 8.2#



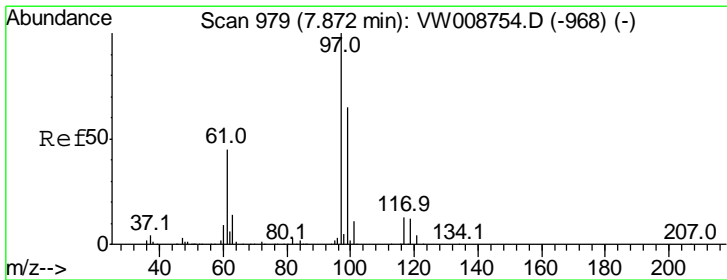
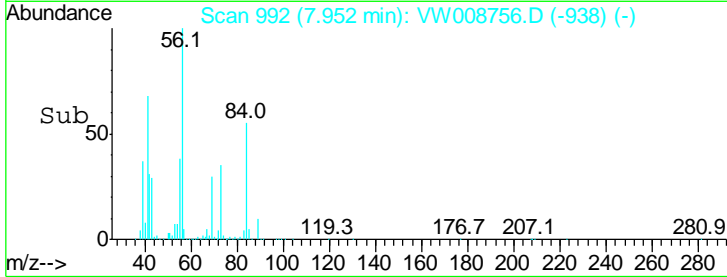
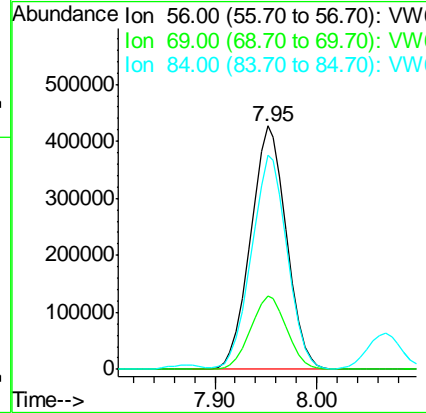
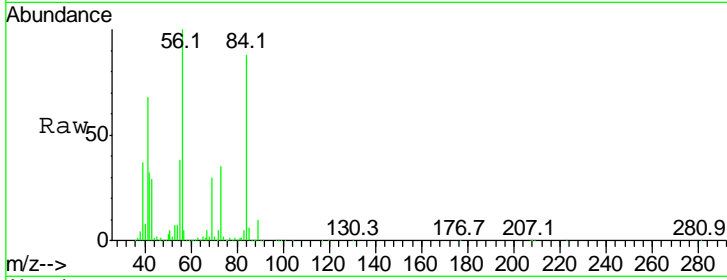


#30
 Cyclohexane
 Concen: 108.902 ug/L
 RT: 7.95 min Scan# 992
 Delta R.T. -0.00 min
 Lab File: VW008756.D
 Acq: 20 Feb 2019 12:57

Instrument :
 MSVOA_W
 ClientSampled :
 VSTD10005

Tgt Ion: 56 Resp: 1041439

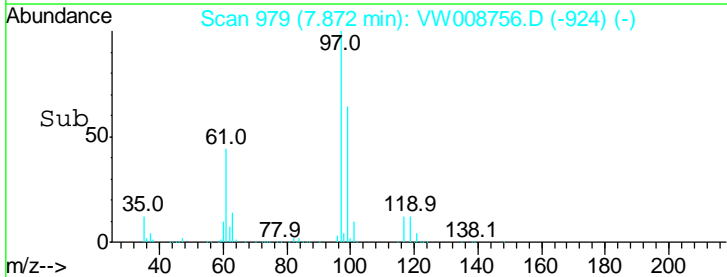
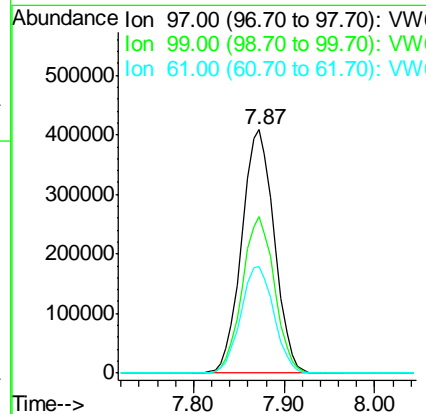
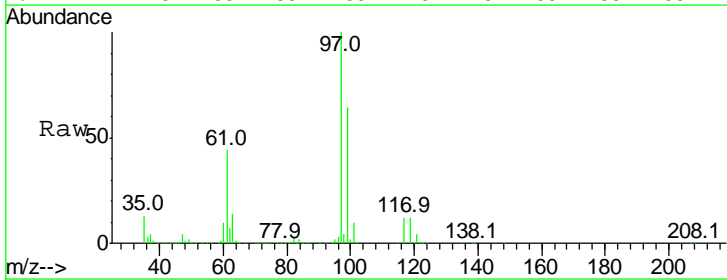
Ion	Ratio	Lower	Upper
56	100		
69	30.3	26.2	39.4
84	88.0	74.3	111.5

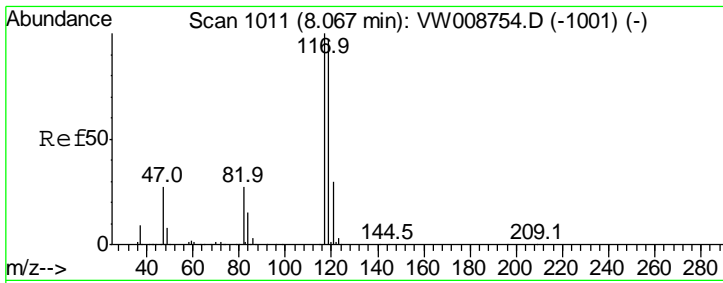


#31
 1,1,1-Trichloroethane
 Concen: 97.553 ug/L
 RT: 7.87 min Scan# 979
 Delta R.T. 0.01 min
 Lab File: VW008756.D
 Acq: 20 Feb 2019 12:57

Tgt Ion: 97 Resp: 1016656

Ion	Ratio	Lower	Upper
97	100		
99	63.6	52.3	78.5
61	44.5	33.5	50.3

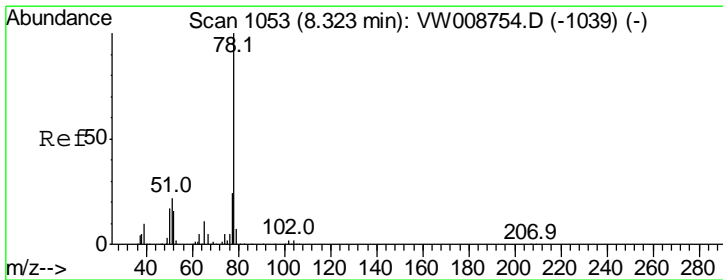
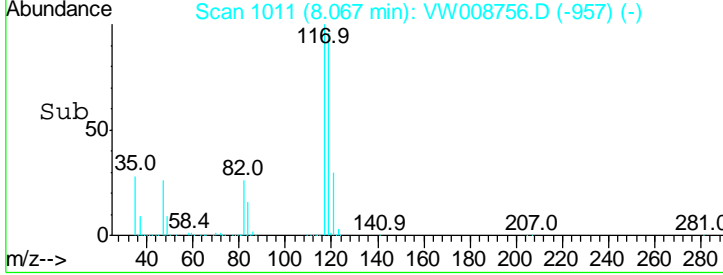
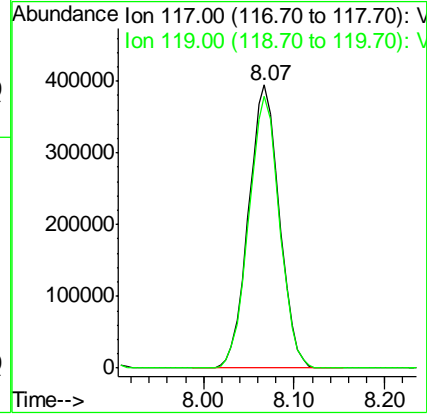
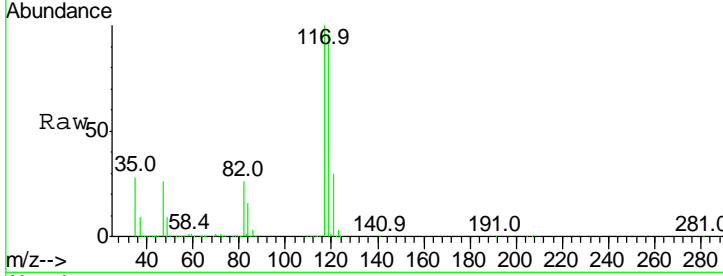




#32
 Carbon tetrachloride
 Concen: 92.565 ug/L
 RT: 8.07 min Scan# 1011
 Delta R.T. -0.00 min
 Lab File: VW008756.D
 Acq: 20 Feb 2019 12:57

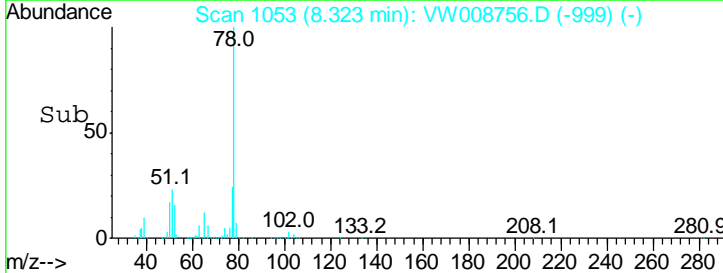
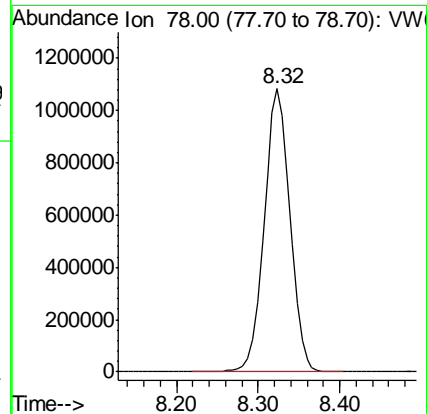
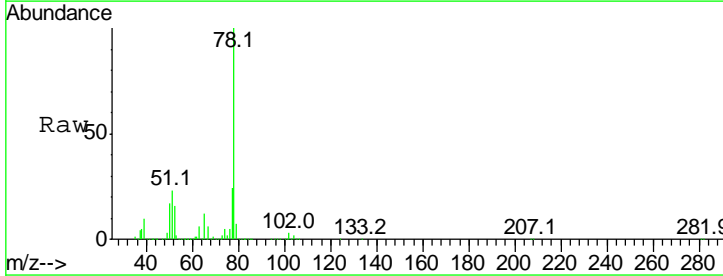
Instrument :
 MSVOA_W
 ClientSampled :
 VSTD10005

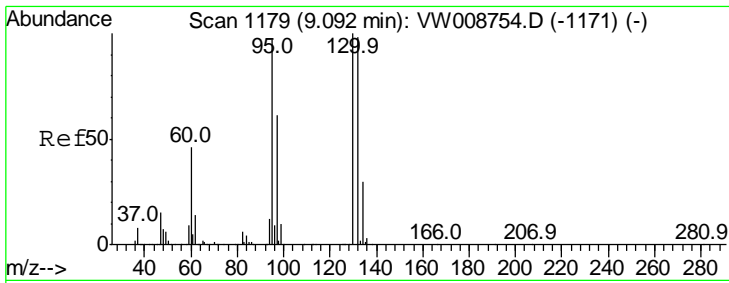
Tgt Ion: 117 Resp: 926161
 Ion Ratio Lower Upper
 117 100
 119 95.9 76.0 114.0



#34
 Benzene
 Concen: 102.267 ug/L
 RT: 8.32 min Scan# 1053
 Delta R.T. -0.00 min
 Lab File: VW008756.D
 Acq: 20 Feb 2019 12:57

Tgt Ion: 78 Resp: 2378769

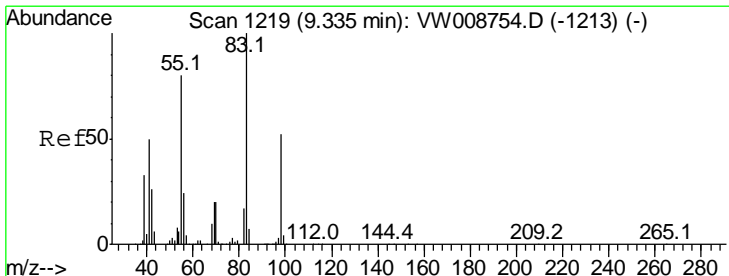
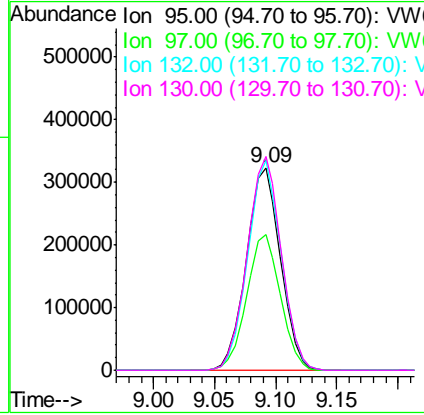
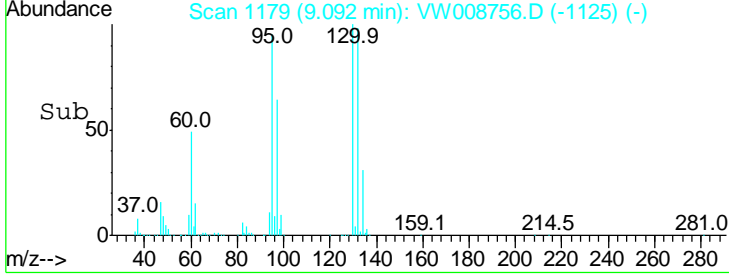
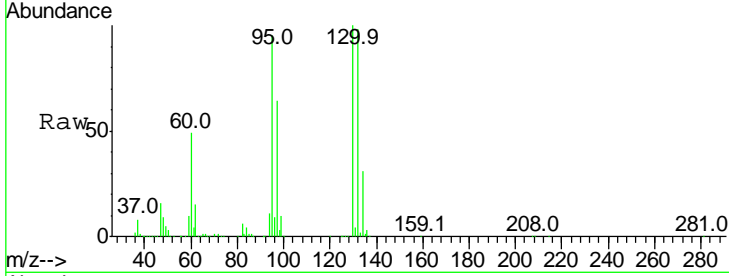




#35
 Trichloroethene
 Concen: 92.941 ug/L
 RT: 9.09 min Scan# 1179
 Delta R.T. -0.00 min
 Lab File: VW008756.D
 Acq: 20 Feb 2019 12:57

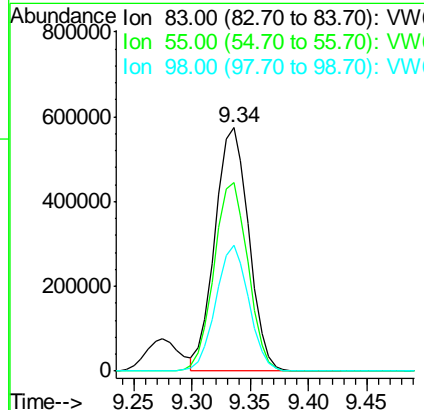
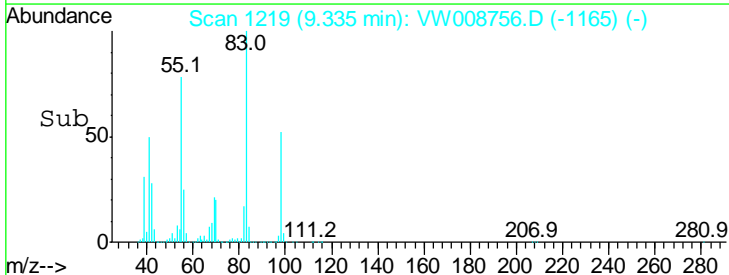
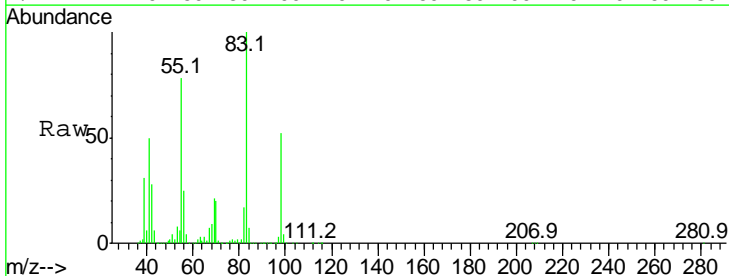
Instrument :
 MSVOA_W
ClientSampled :
 VSTD10005

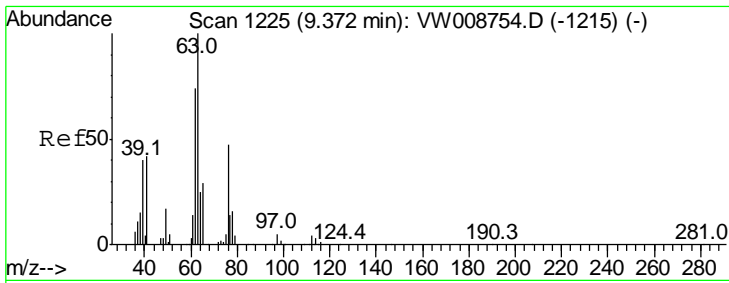
Tgt Ion	Resp	Lower	Upper
95	628095		
95	100		
97	66.1	44.4	82.5
132	101.4	67.8	126.0
130	105.4	70.3	130.7



#36
 Methylcyclohexane
 Concen: 99.592 ug/L
 RT: 9.34 min Scan# 1219
 Delta R.T. -0.00 min
 Lab File: VW008756.D
 Acq: 20 Feb 2019 12:57

Tgt Ion	Resp	Lower	Upper
83	1154154		
83	100		
55	77.6	59.4	89.0
98	50.5	38.2	57.2

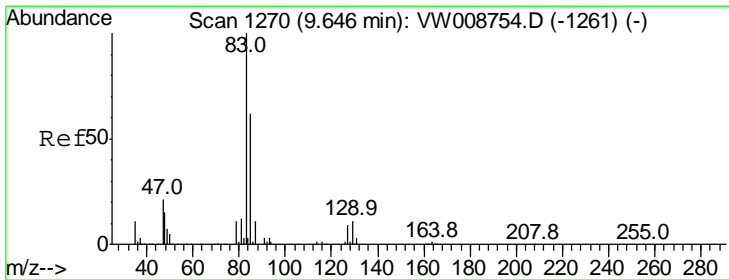
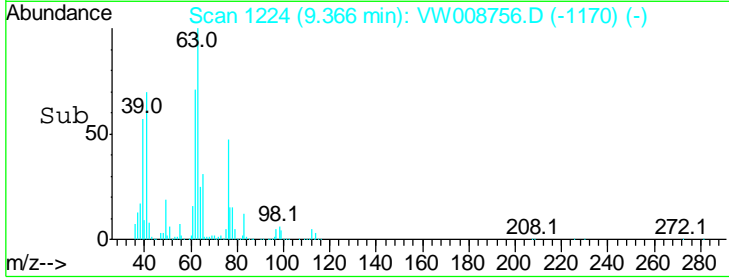
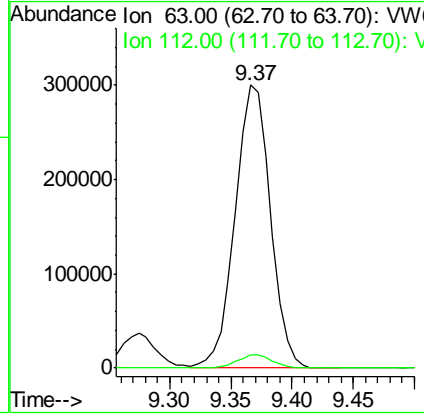
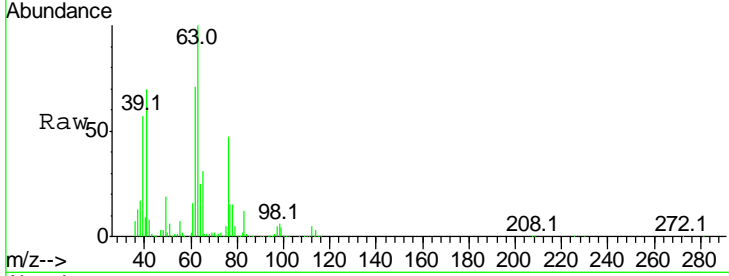




#40
 1,2-Dichloropropane
 Concen: 109.878 ug/L
 RT: 9.37 min Scan# 1224
 Delta R.T. -0.00 min
 Lab File: VW008756.D
 Acq: 20 Feb 2019 12:57

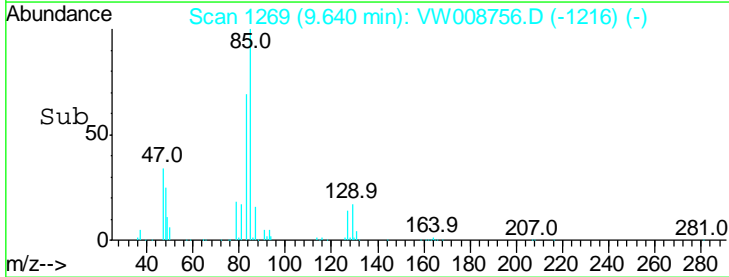
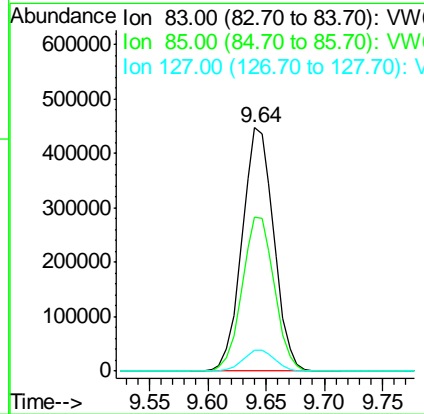
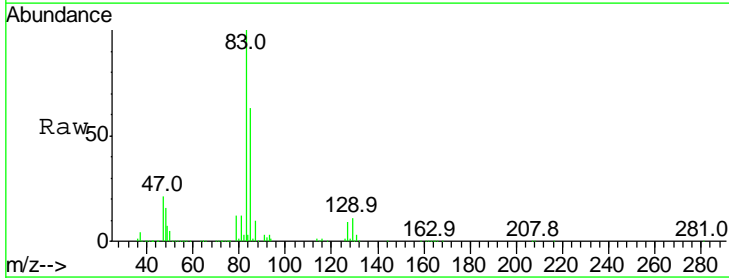
Instrument : MSVOA_W
 ClientSampled : VSTD10005

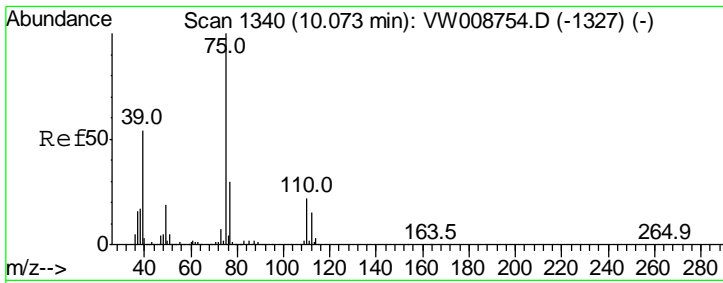
Tgt Ion: 63 Resp: 600788
 Ion Ratio Lower Upper
 63 100
 112 4.7 3.7 5.5



#41
 Bromodichloromethane
 Concen: 105.655 ug/L
 RT: 9.64 min Scan# 1269
 Delta R.T. -0.01 min
 Lab File: VW008756.D
 Acq: 20 Feb 2019 12:57

Tgt Ion: 83 Resp: 849612
 Ion Ratio Lower Upper
 83 100
 85 63.2 44.4 82.5
 127 8.6 7.0 10.6

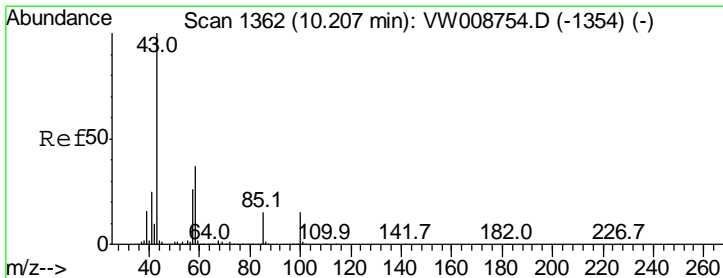
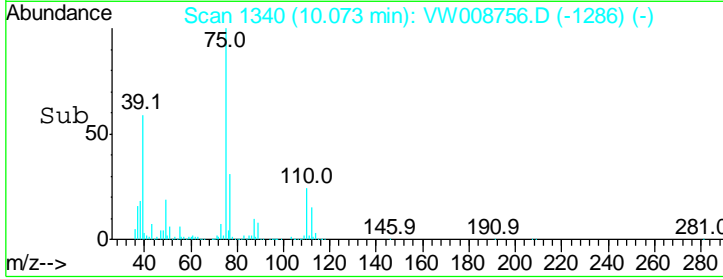
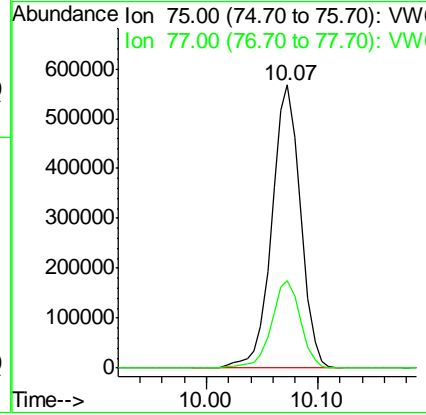
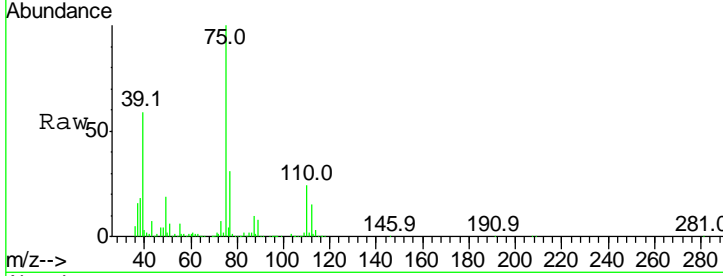




#42
 cis-1,3-Dichloropropene
 Concen: 106.855 ug/L
 RT: 10.07 min Scan# 1340
 Delta R.T. -0.00 min
 Lab File: VW008756.D
 Acq: 20 Feb 2019 12:57

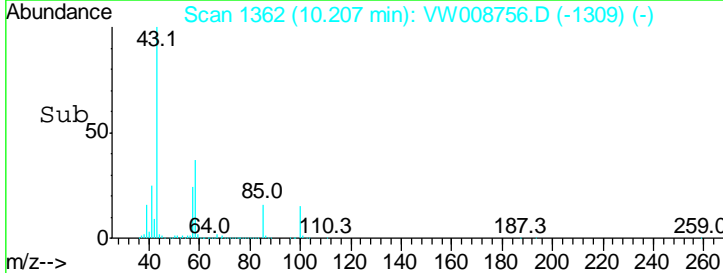
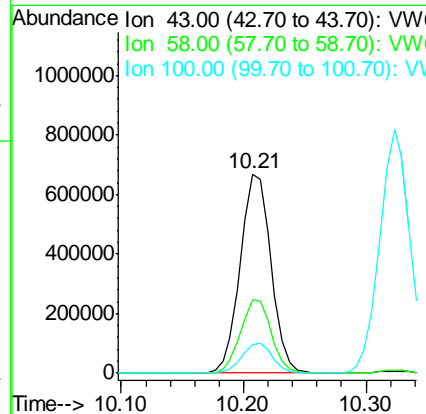
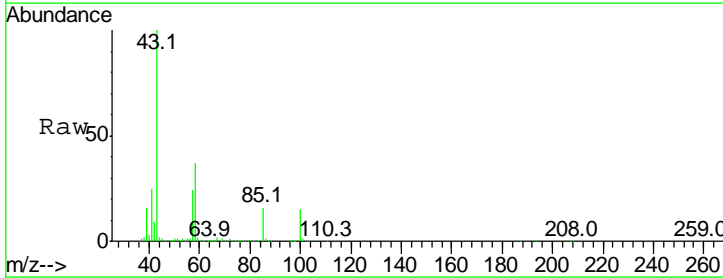
Instrument : MSVOA_W
 ClientSampled : VSTD10005

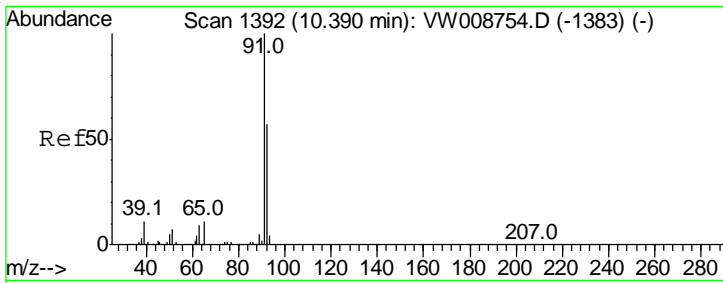
Tgt Ion: 75 Resp: 1019872
 Ion Ratio Lower Upper
 75 100
 77 31.0 23.0 42.8



#43
 4-Methyl-2-pentanone
 Concen: 268.678 ug/L
 RT: 10.21 min Scan# 1362
 Delta R.T. -0.01 min
 Lab File: VW008756.D
 Acq: 20 Feb 2019 12:57

Tgt Ion: 43 Resp: 1162723
 Ion Ratio Lower Upper
 43 100
 58 36.9 31.1 46.7
 100 15.1 14.0 21.0

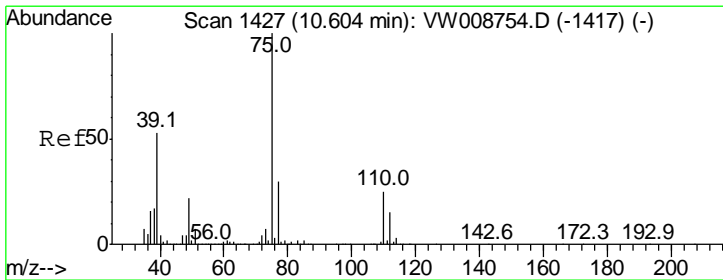
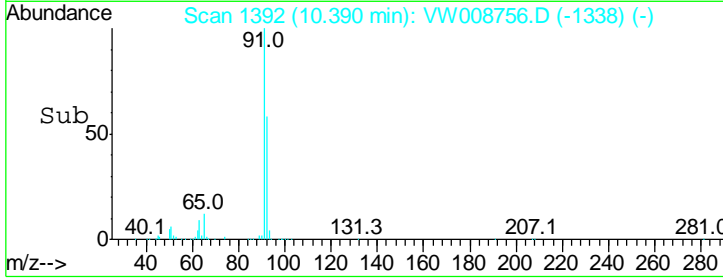
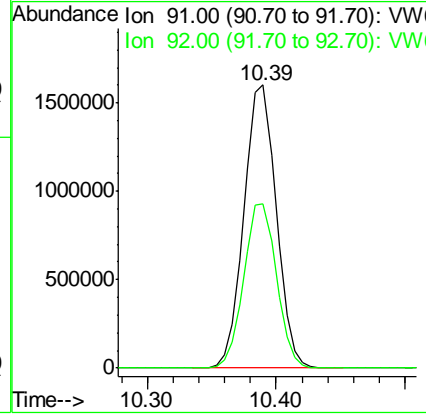
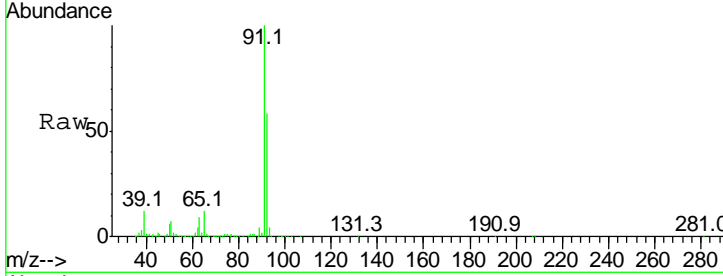




#44
 Toluene
 Concen: 106.529 ug/L
 RT: 10.39 min Scan# 1392
 Delta R.T. -0.00 min
 Lab File: VW008756.D
 Acq: 20 Feb 2019 12:57

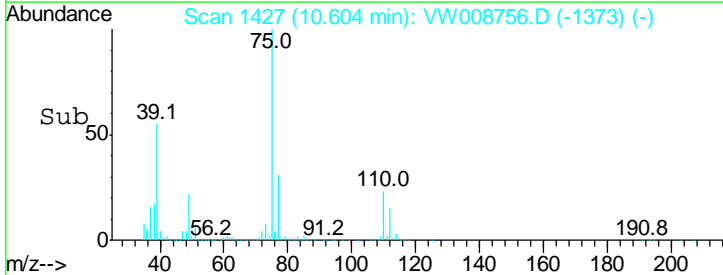
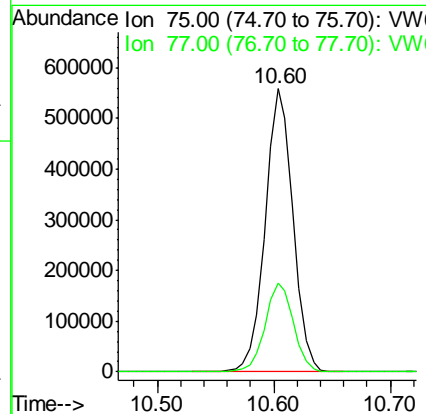
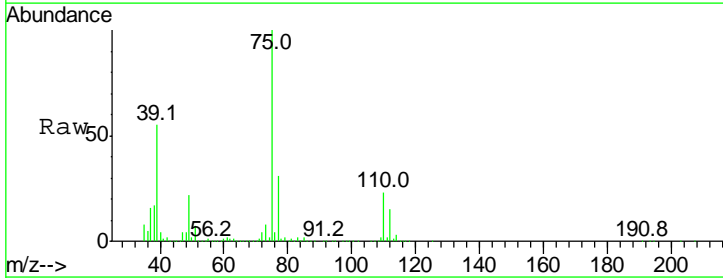
Instrument : MSVOA_W
 ClientSampled : VSTD10005

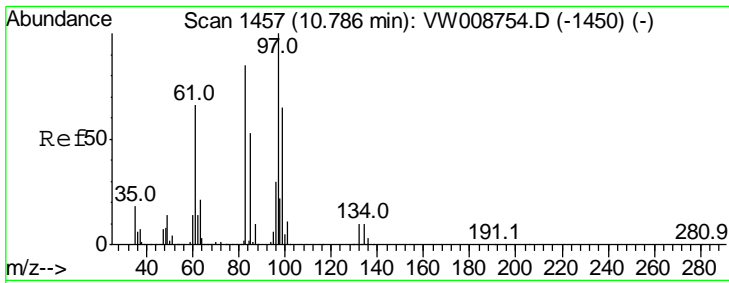
Tgt Ion: 91 Resp: 2772329
 Ion Ratio Lower Upper
 91 100
 92 57.9 39.6 73.6



#45
 trans-1,3-Dichloropropene
 Concen: 105.366 ug/L
 RT: 10.60 min Scan# 1427
 Delta R.T. -0.00 min
 Lab File: VW008756.D
 Acq: 20 Feb 2019 12:57

Tgt Ion: 75 Resp: 926650
 Ion Ratio Lower Upper
 75 100
 77 31.4 21.1 39.3

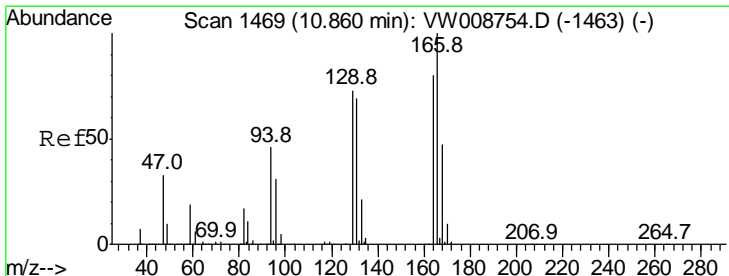
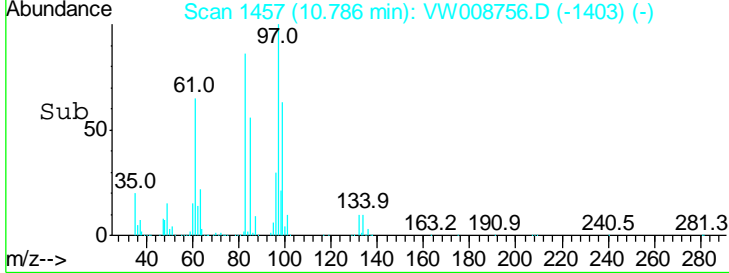
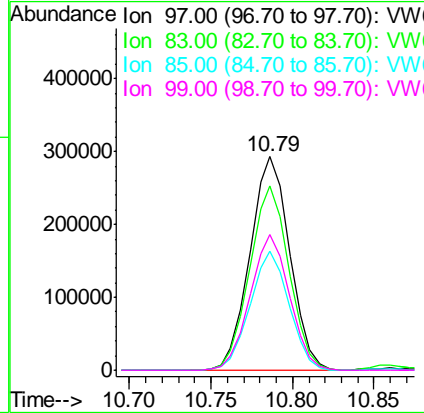
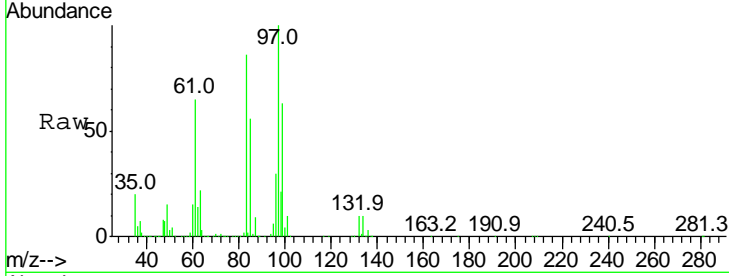




#46
 1,1,2-Trichloroethane
 Concen: 107.523 ug/L
 RT: 10.79 min Scan# 1457
 Delta R.T. -0.00 min
 Lab File: VW008756.D
 Acq: 20 Feb 2019 12:57

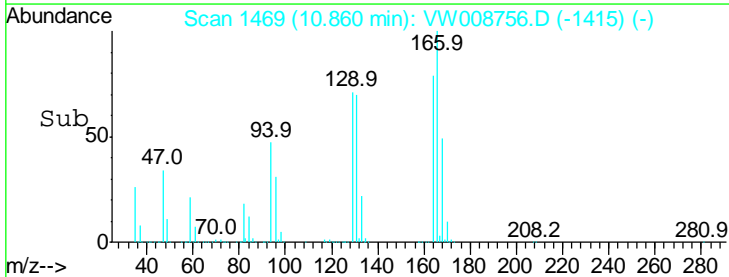
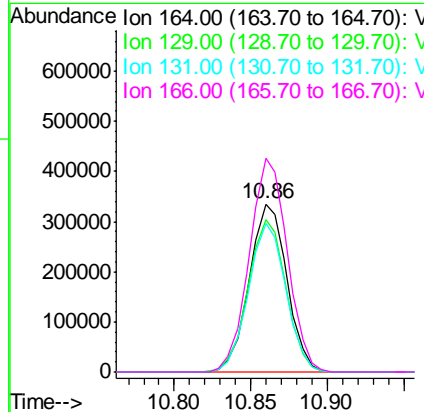
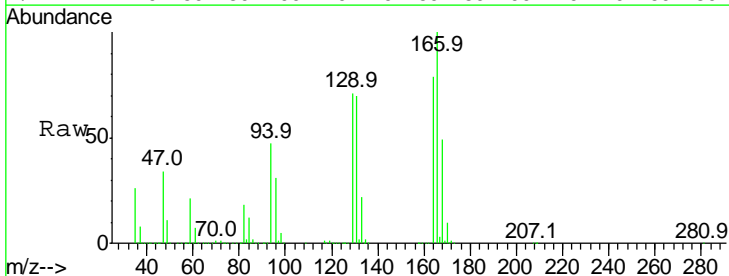
Instrument : MSVOA_W
 ClientSampled : VSTD10005

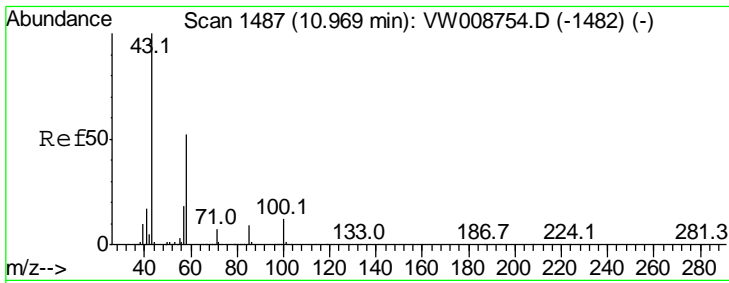
Tgt Ion	Resp	Lower	Upper
97	100		
83	86.2	58.4	108.6
85	55.7	36.4	67.6
99	63.3	43.8	81.3



#47
 Tetrachloroethene
 Concen: 106.704 ug/L
 RT: 10.86 min Scan# 1469
 Delta R.T. -0.00 min
 Lab File: VW008756.D
 Acq: 20 Feb 2019 12:57

Tgt Ion	Resp	Lower	Upper
164	100		
129	90.7	70.6	131.2
131	88.5	66.5	123.5
166	126.9	87.7	162.9

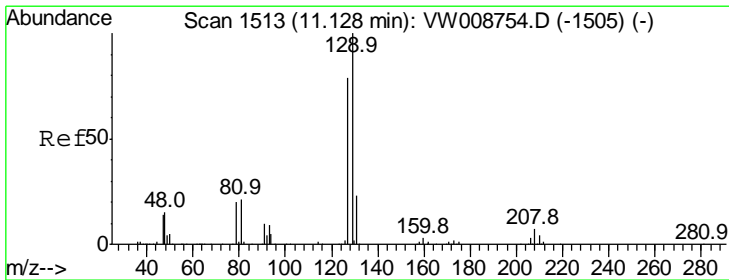
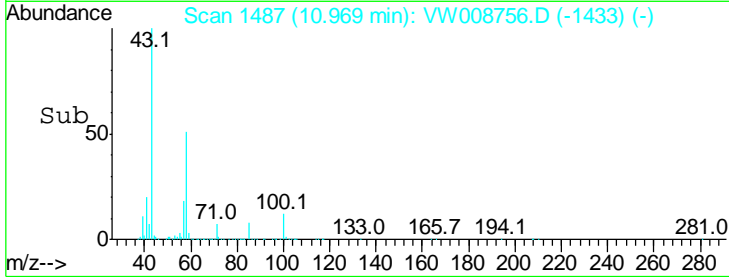
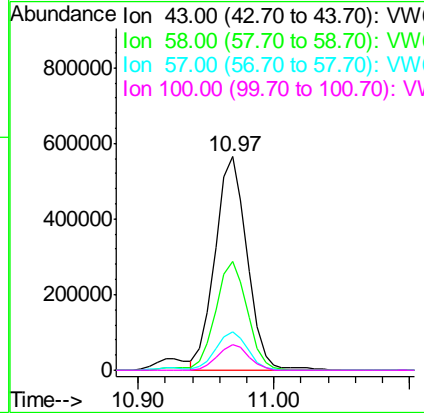
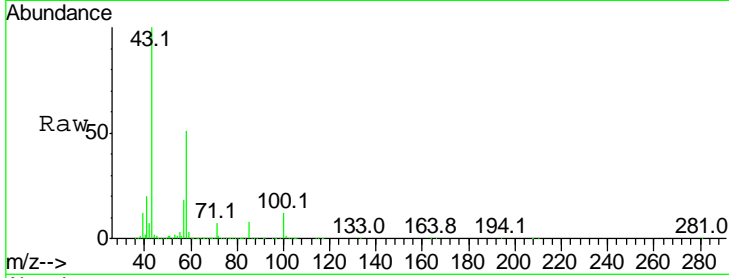




#49
 2-Hexanone
 Concen: 294.113 ug/L
 RT: 10.97 min Scan# 1487
 Delta R.T. -0.00 min
 Lab File: VW008756.D
 Acq: 20 Feb 2019 12:57

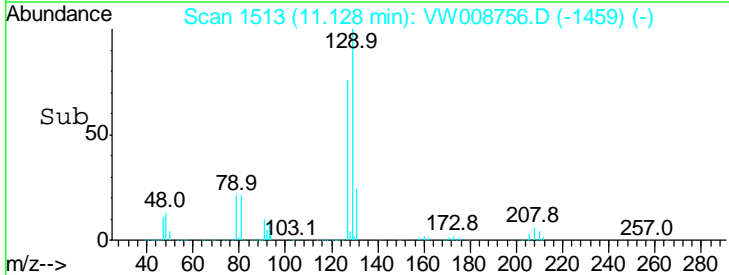
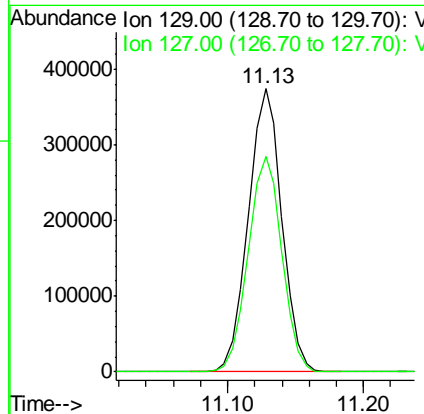
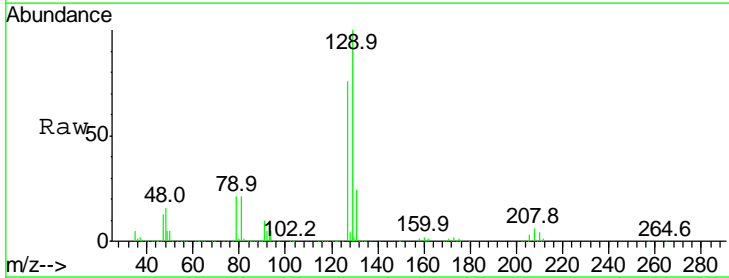
Instrument :
 MSVOA_W
 ClientSampled :
 VSTD10005

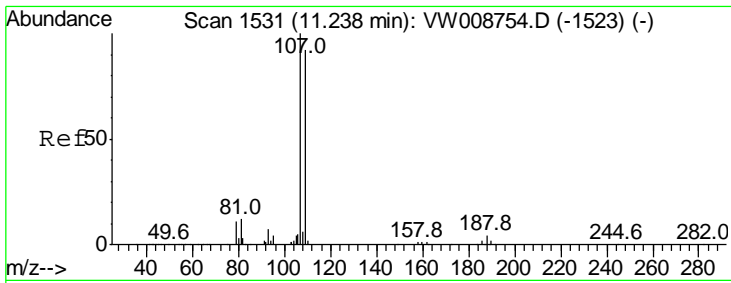
Tgt Ion	Resp	Lower	Upper
43	100		
58	50.5	46.2	69.4
57	17.9	17.9	26.9#
100	11.8	11.4	17.2



#50
 Dibromochloromethane
 Concen: 109.592 ug/L
 RT: 11.13 min Scan# 1513
 Delta R.T. -0.00 min
 Lab File: VW008756.D
 Acq: 20 Feb 2019 12:57

Tgt Ion	Resp	Lower	Upper
129	100		
127	76.2	55.8	103.6

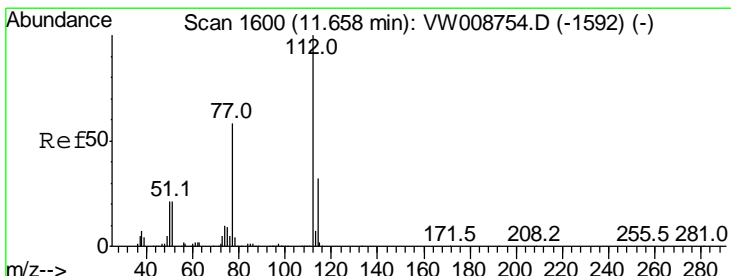
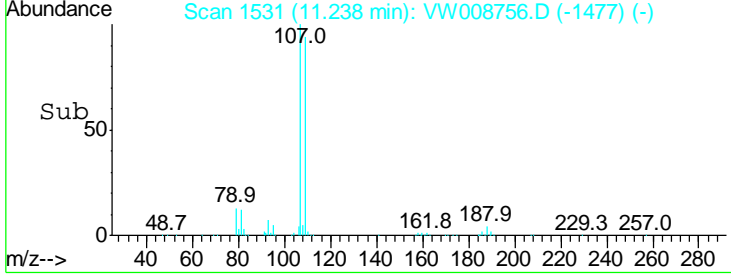
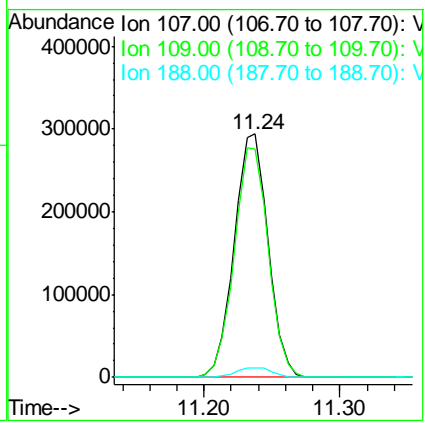
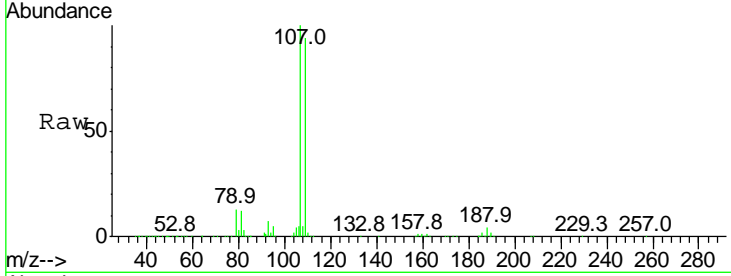




#51
 1,2-Dibromoethane
 Concen: 108.200 ug/L
 RT: 11.24 min Scan# 1531
 Delta R.T. -0.00 min
 Lab File: VW008756.D
 Acq: 20 Feb 2019 12:57

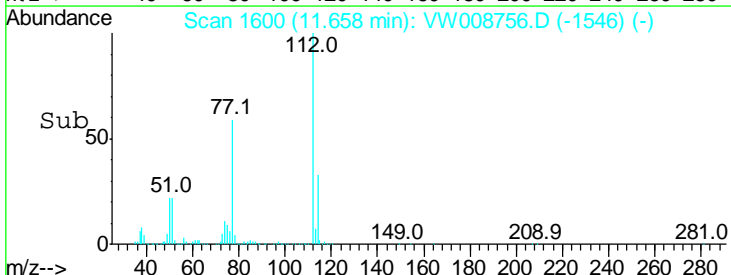
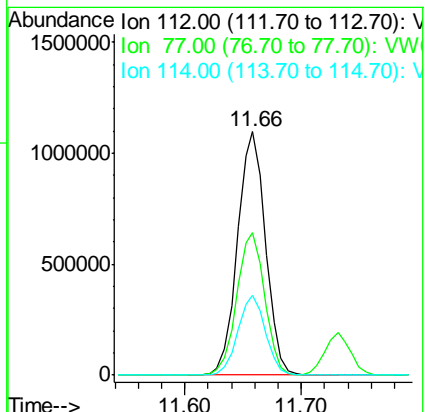
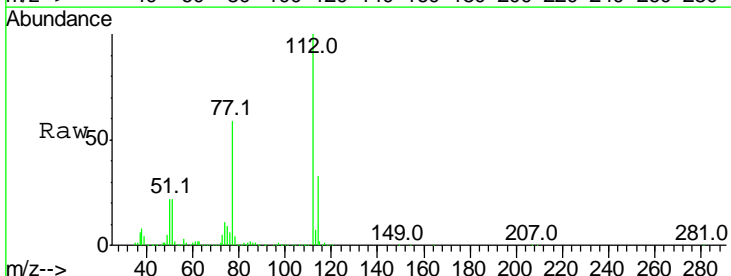
Instrument : MSVOA_W
 ClientSampled : VSTD10005

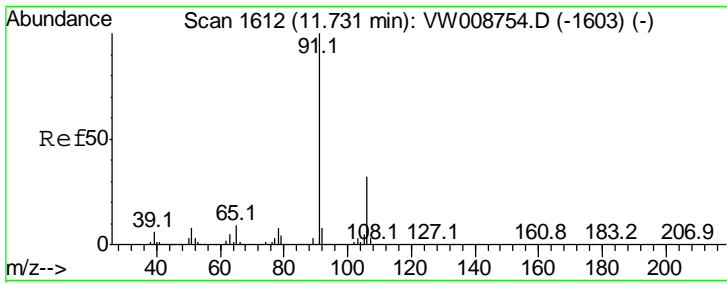
Tgt Ion	Resp	Lower	Upper
107	100		
109	94.0	63.2	117.4
188	4.1	3.1	4.7



#52
 Chlorobenzene
 Concen: 108.037 ug/L
 RT: 11.66 min Scan# 1600
 Delta R.T. -0.00 min
 Lab File: VW008756.D
 Acq: 20 Feb 2019 12:57

Tgt Ion	Resp	Lower	Upper
112	100		
77	58.7	47.8	71.6
114	32.6	22.2	41.2

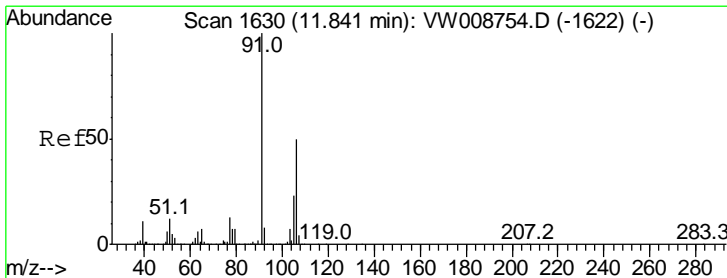
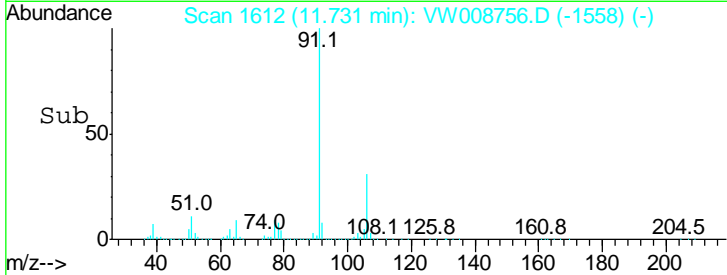
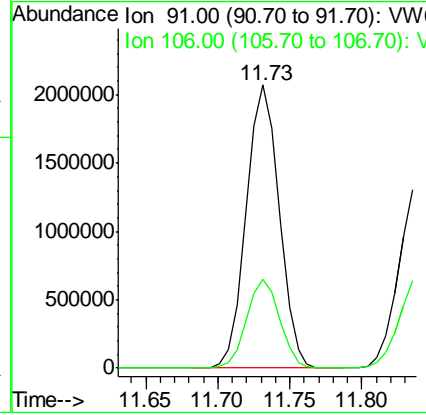
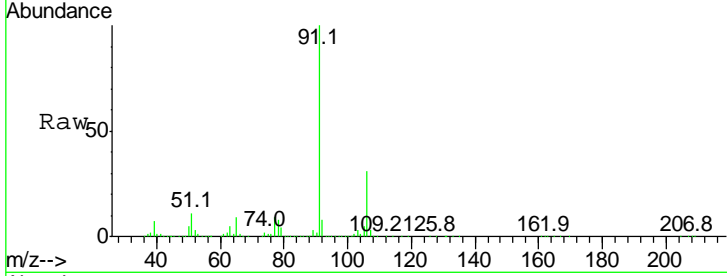




#53
 Ethylbenzene
 Concen: 109.669 ug/L
 RT: 11.73 min Scan# 1612
 Delta R.T. -0.00 min
 Lab File: VW008756.D
 Acq: 20 Feb 2019 12:57

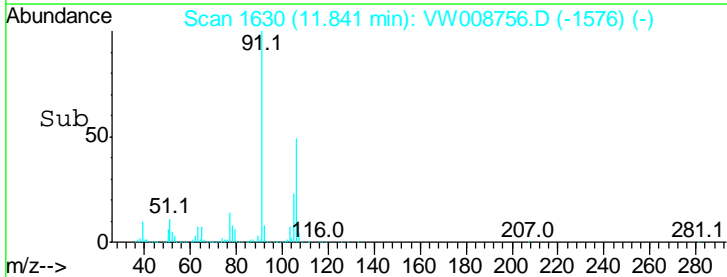
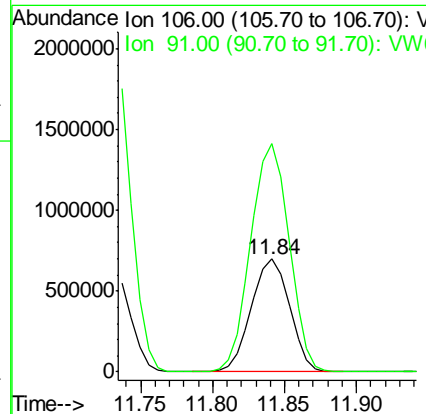
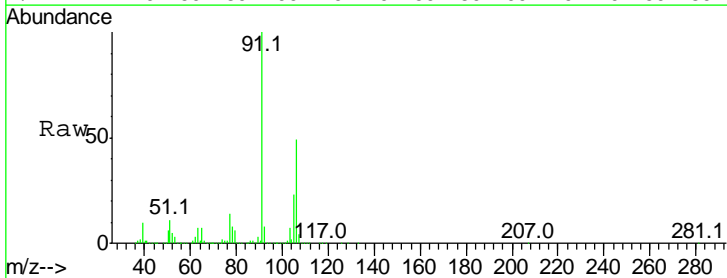
Instrument :
 MSVOA_W
 ClientSampled :
 VSTD10005

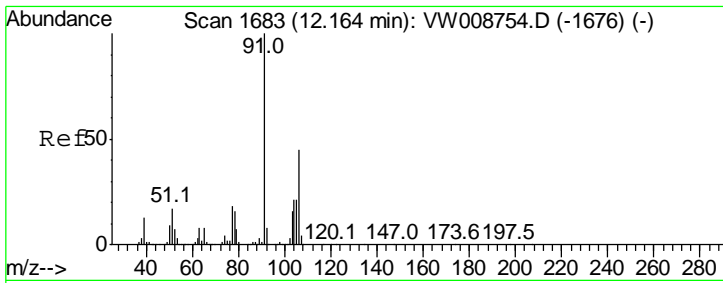
Tgt Ion: 91 Resp: 3279115
 Ion Ratio Lower Upper
 91 100
 106 31.3 21.5 39.9



#54
 m,p-Xylene
 Concen: 114.772 ug/L
 RT: 11.84 min Scan# 1630
 Delta R.T. -0.00 min
 Lab File: VW008756.D
 Acq: 20 Feb 2019 12:57

Tgt Ion: 106 Resp: 1292913
 Ion Ratio Lower Upper
 106 100
 91 202.5 147.8 274.4

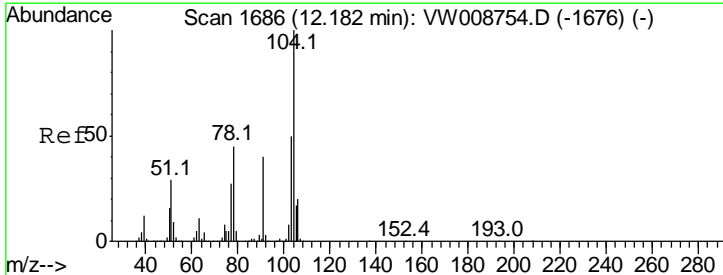
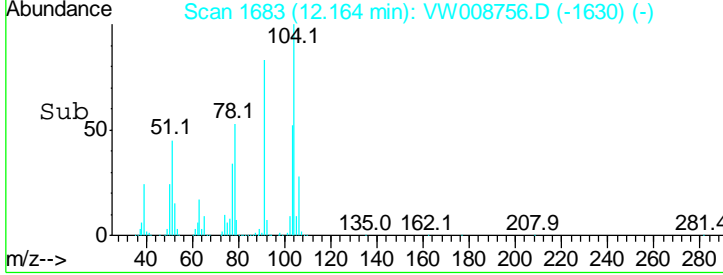
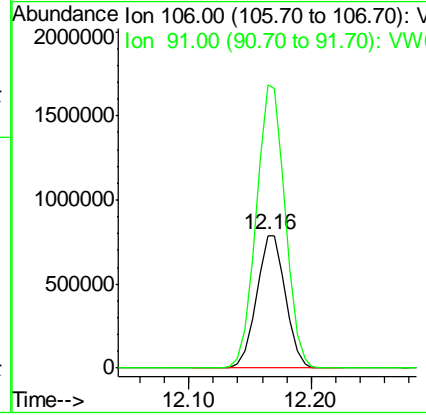
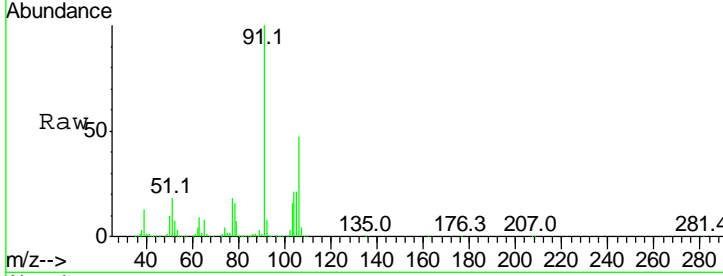




#55
 o-xylene
 Concen: 121.746 ug/L
 RT: 12.16 min Scan# 1683
 Delta R.T. -0.01 min
 Lab File: VW008756.D
 Acq: 20 Feb 2019 12:57

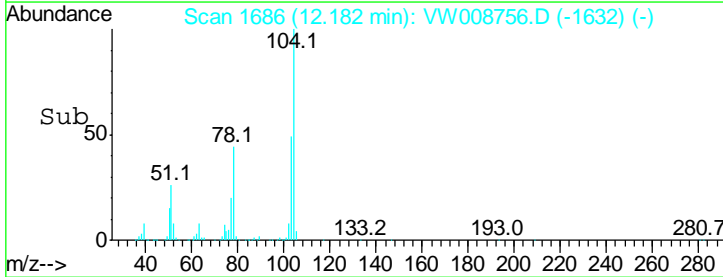
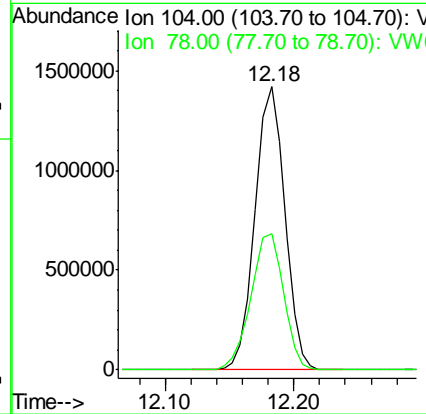
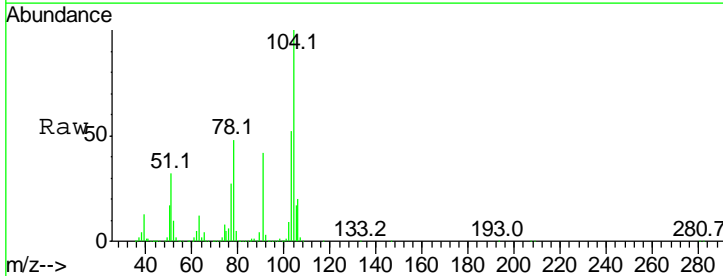
Instrument : MSVOA_W
 ClientSampled : VSTD10005

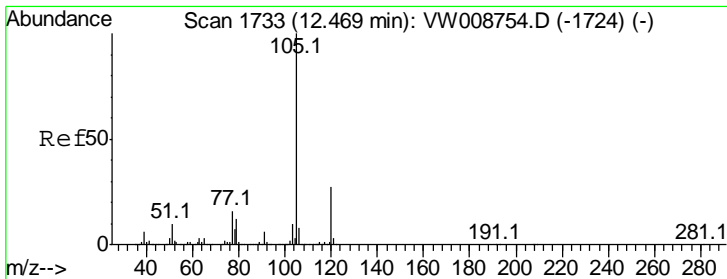
Tgt Ion:106 Resp: 1300709
 Ion Ratio Lower Upper
 106 100
 91 213.4 156.0 289.6



#56
 Styrene
 Concen: 125.310 ug/L
 RT: 12.18 min Scan# 1686
 Delta R.T. -0.00 min
 Lab File: VW008756.D
 Acq: 20 Feb 2019 12:57

Tgt Ion:104 Resp: 2269133
 Ion Ratio Lower Upper
 104 100
 78 48.0 34.6 64.3



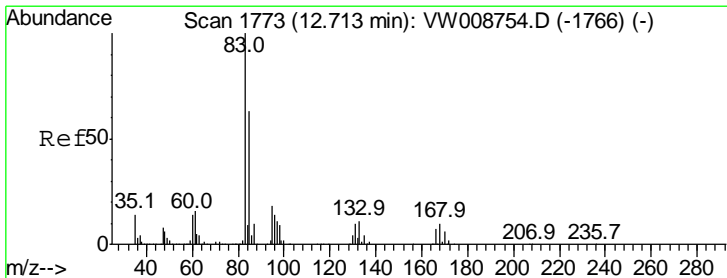
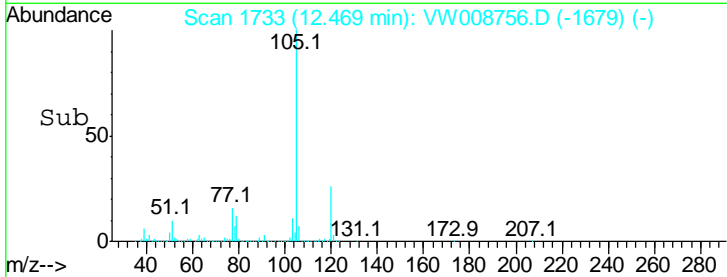
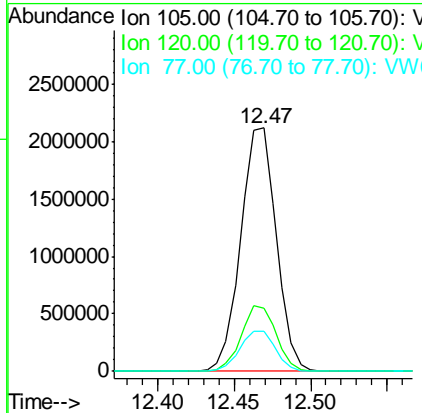
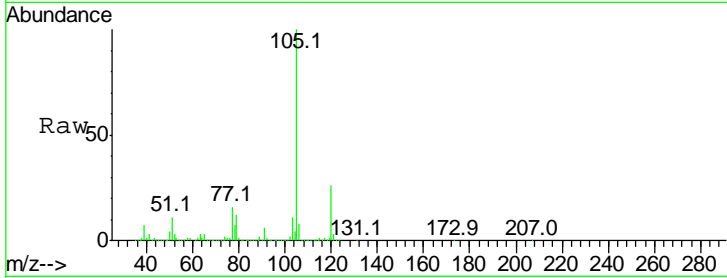


#57
 Isopropylbenzene
 Concen: 112.613 ug/L
 RT: 12.47 min Scan# 1733
 Delta R.T. -0.00 min
 Lab File: VW008756.D
 Acq: 20 Feb 2019 12:57

Instrument :
 MSVOA_W
 ClientSampled :
 VSTD10005

Tgt Ion: 105 Resp: 3408099

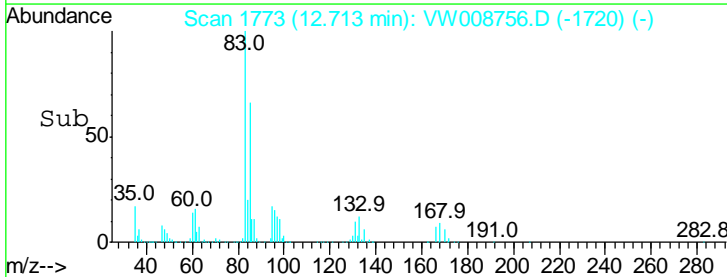
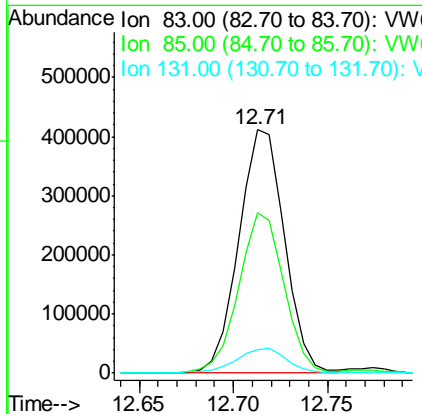
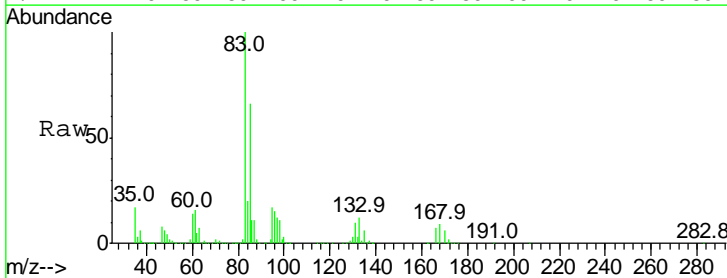
Ion	Ratio	Lower	Upper
105	100		
120	26.5	21.1	31.7
77	16.6	12.4	18.6

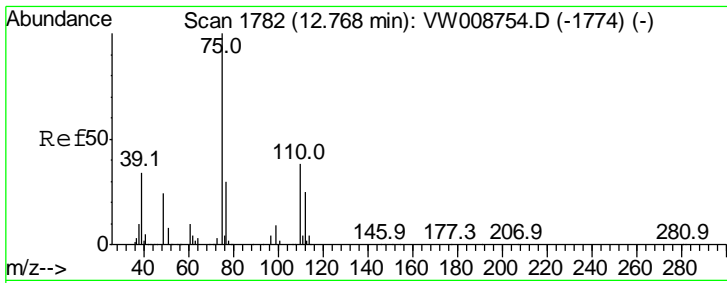


#58
 1,1,2,2-Tetrachloroethane
 Concen: 120.665 ug/L
 RT: 12.71 min Scan# 1773
 Delta R.T. -0.01 min
 Lab File: VW008756.D
 Acq: 20 Feb 2019 12:57

Tgt Ion: 83 Resp: 692086

Ion	Ratio	Lower	Upper
83	100		
85	65.9	46.6	86.6
131	9.8	9.7	14.5

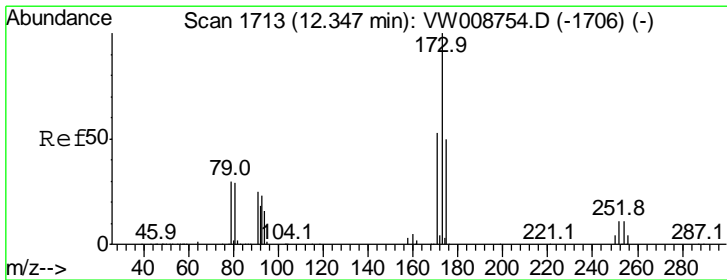
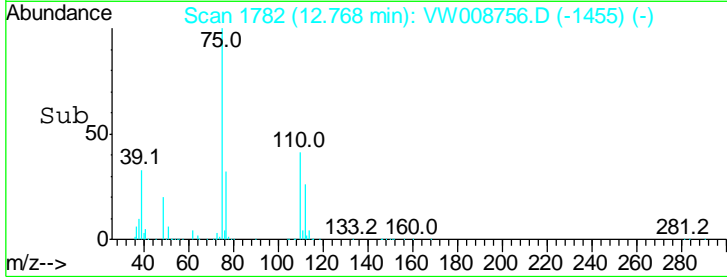
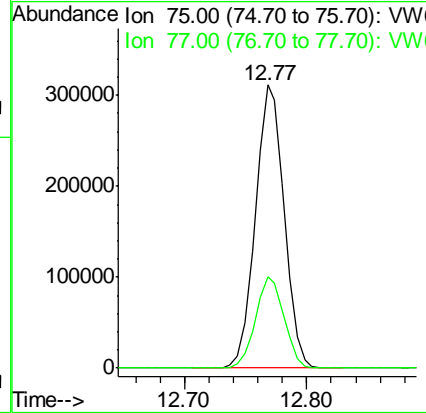
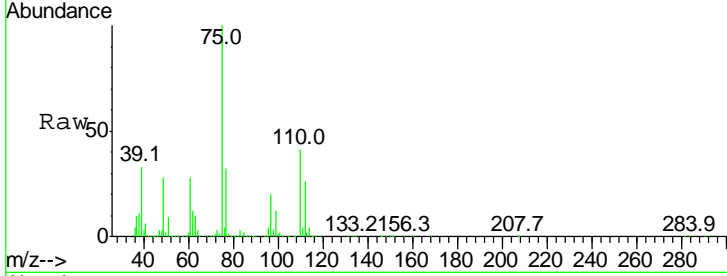




#59
 1,2,3-Trichloropropane
 Concen: 110.292 ug/L
 RT: 12.77 min Scan# 1782
 Delta R.T. -0.01 min
 Lab File: VW008756.D
 Acq: 20 Feb 2019 12:57

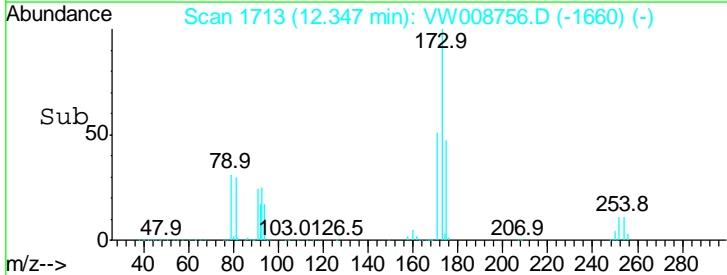
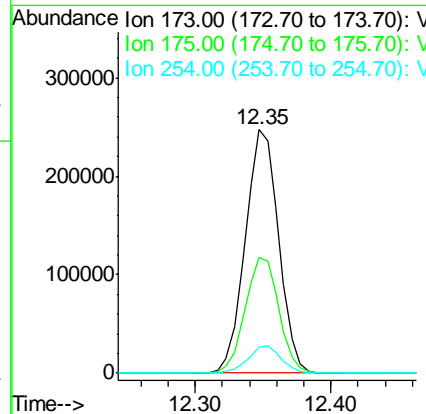
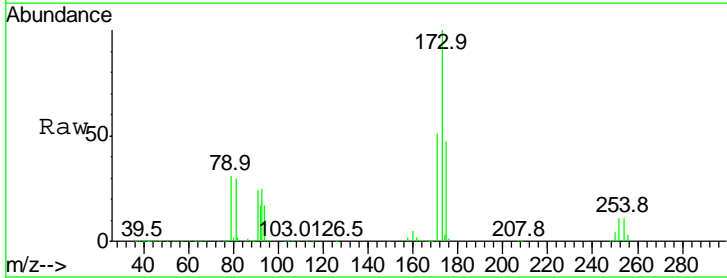
Instrument :
 MSVOA_W
 ClientSampled :
 VSTD10005

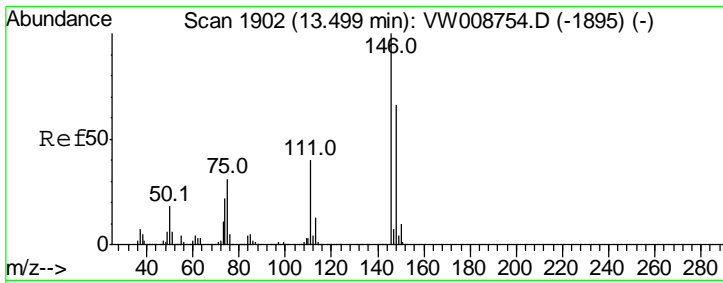
Tgt Ion: 75 Resp: 508825
 Ion Ratio Lower Upper
 75 100
 77 32.1 25.5 38.3



#62
 Bromoform
 Concen: 110.632 ug/L
 RT: 12.35 min Scan# 1713
 Delta R.T. -0.01 min
 Lab File: VW008756.D
 Acq: 20 Feb 2019 12:57

Tgt Ion: 173 Resp: 424371
 Ion Ratio Lower Upper
 173 100
 175 47.8 39.0 58.4
 254 11.0 5.8 8.8#

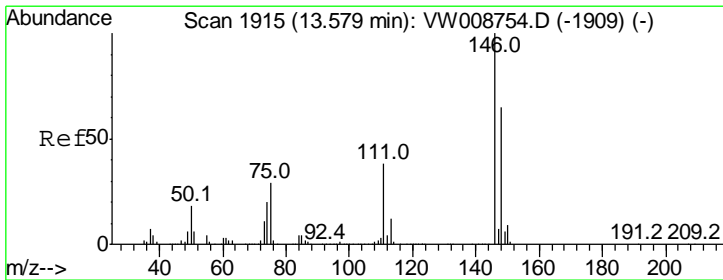
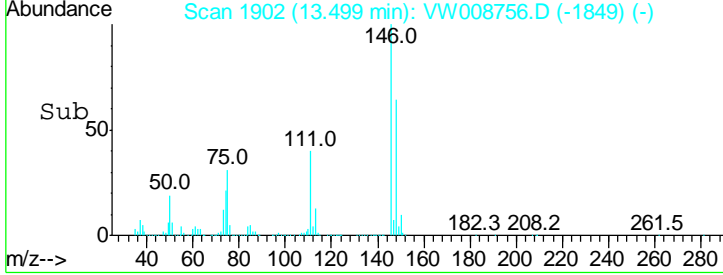
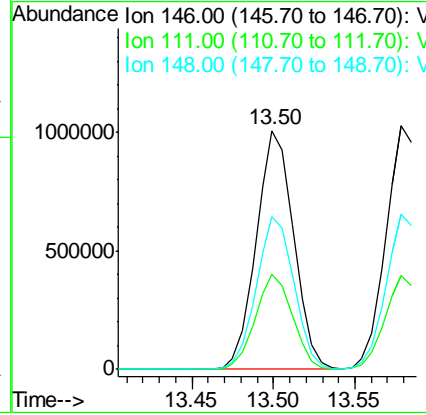
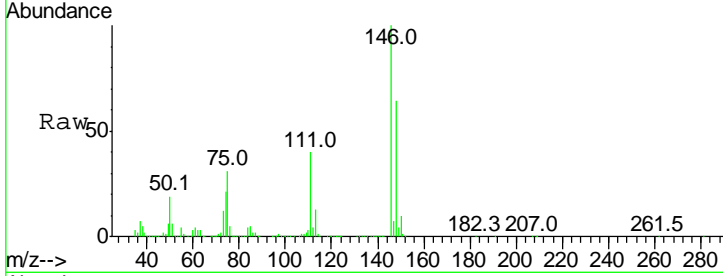




#63
 1,3-Dichlorobenzene
 Concen: 103.476 ug/L
 RT: 13.50 min Scan# 1902
 Delta R.T. -0.01 min
 Lab File: VW008756.D
 Acq: 20 Feb 2019 12:57

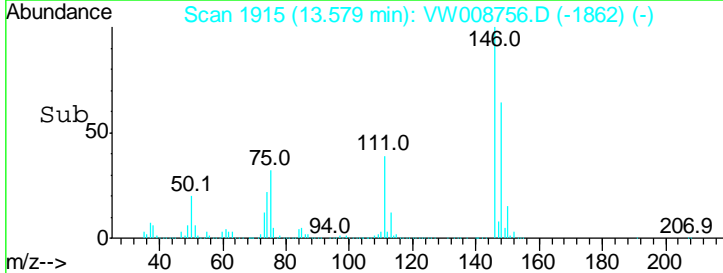
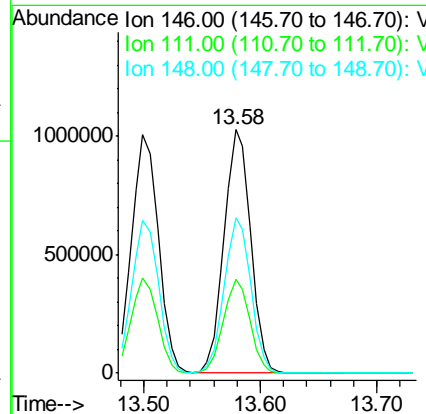
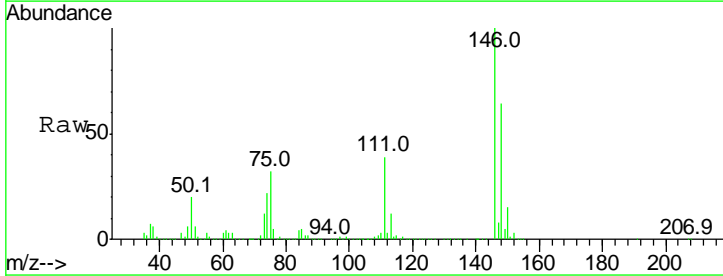
Instrument :
 MSVOA_W
 ClientSampled :
 VSTD10005

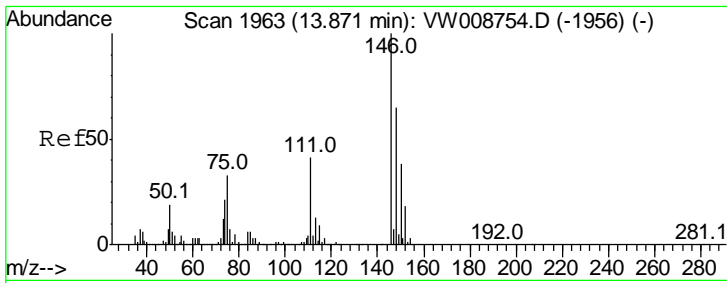
Tgt Ion	Resp	Lower	Upper
146	100		
111	39.6	31.0	57.6
148	63.9	43.6	81.0



#64
 1,4-Dichlorobenzene
 Concen: 105.010 ug/L
 RT: 13.58 min Scan# 1915
 Delta R.T. -0.01 min
 Lab File: VW008756.D
 Acq: 20 Feb 2019 12:57

Tgt Ion	Resp	Lower	Upper
146	100		
111	38.6	26.9	49.9
148	63.8	41.6	77.3



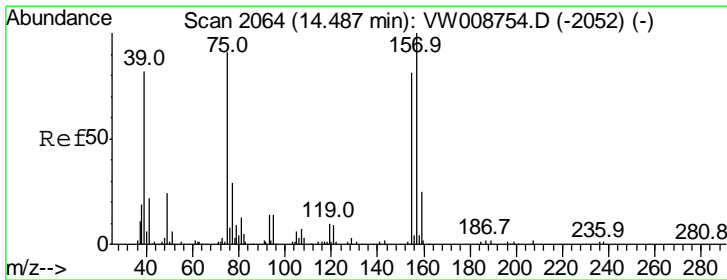
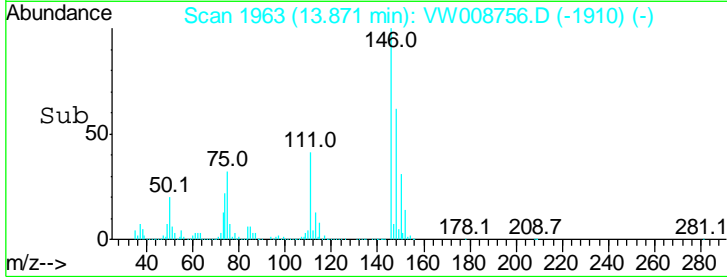
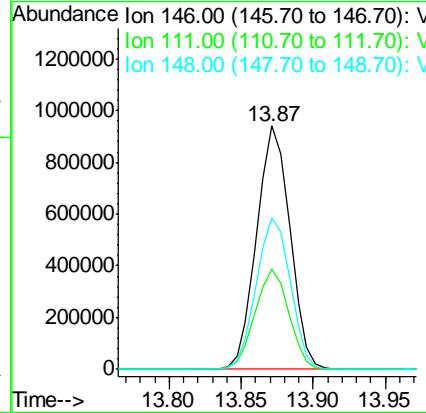
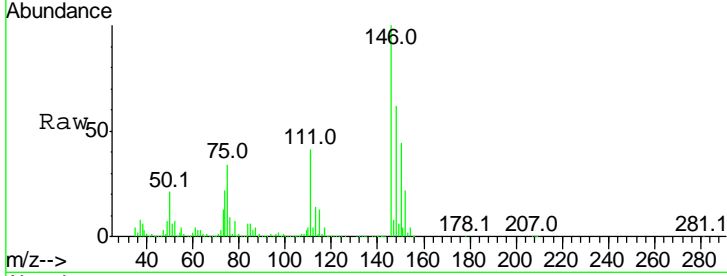


#65
 1,2-Dichlorobenzene
 Concen: 106.477 ug/L
 RT: 13.87 min Scan# 1963
 Delta R.T. -0.01 min
 Lab File: VW008756.D
 Acq: 20 Feb 2019 12:57

Instrument :
 MSVOA_W
 ClientSampled :
 VSTD10005

Tgt Ion: 146 Resp: 1503622

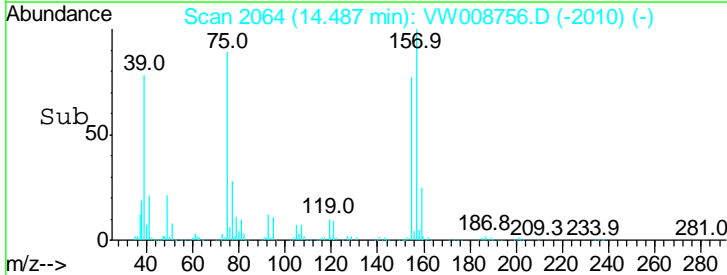
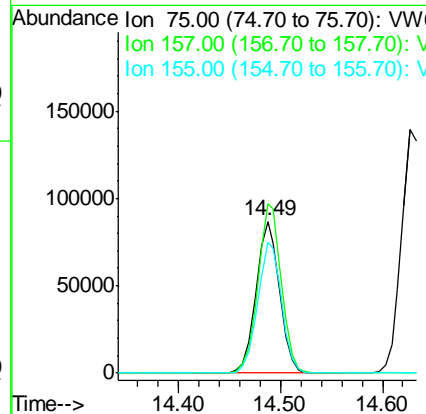
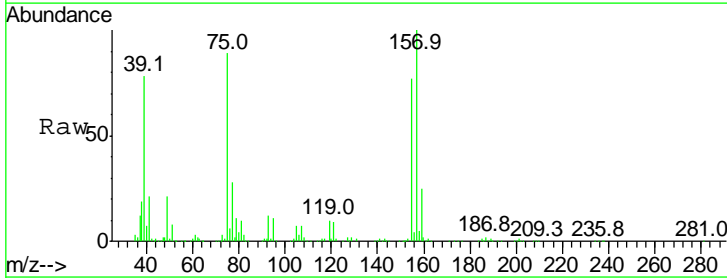
Ion	Ratio	Lower	Upper
146	100		
111	41.3	36.4	54.6
148	62.3	51.0	76.4

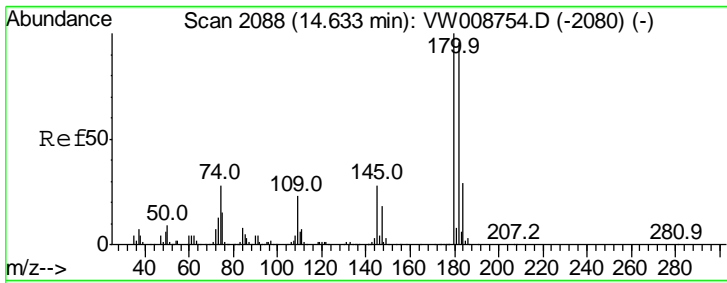


#66
 1,2-Dibromo-3-chloropropane
 Concen: 99.929 ug/L
 RT: 14.49 min Scan# 2064
 Delta R.T. -0.00 min
 Lab File: VW008756.D
 Acq: 20 Feb 2019 12:57

Tgt Ion: 75 Resp: 139126

Ion	Ratio	Lower	Upper
75	100		
157	111.9	85.6	128.4
155	86.4	63.4	95.0



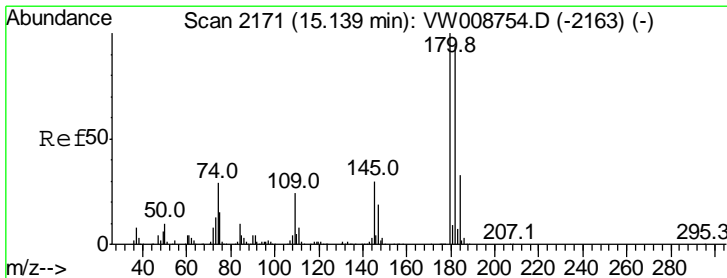
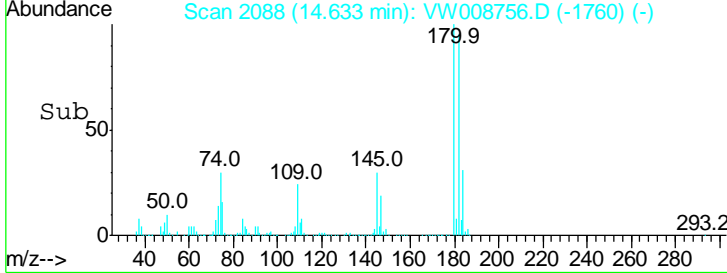
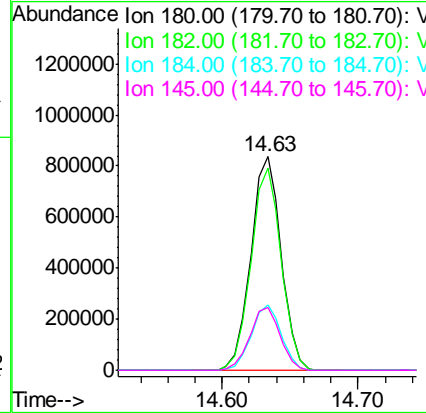
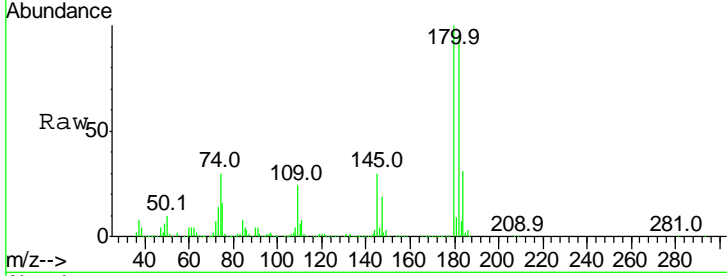


#67
 1,3,5-Trichlorobenzene
 Concen: 114.454 ug/L
 RT: 14.63 min Scan# 2088
 Delta R.T. -0.00 min
 Lab File: VW008756.D
 Acq: 20 Feb 2019 12:57

Instrument :
 MSVOA_W
 ClientSampled :
 VSTD10005

Tgt Ion:180 Resp: 1304026

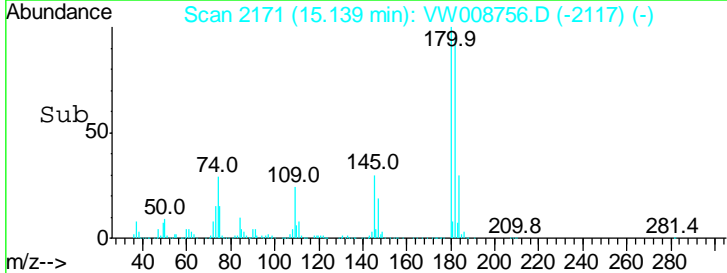
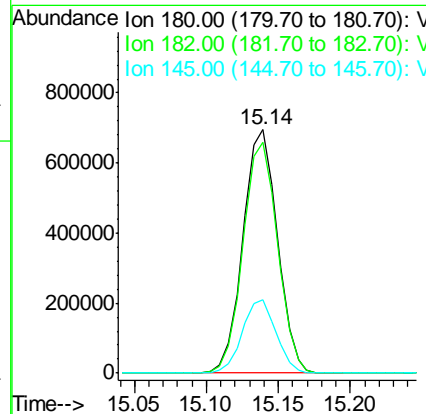
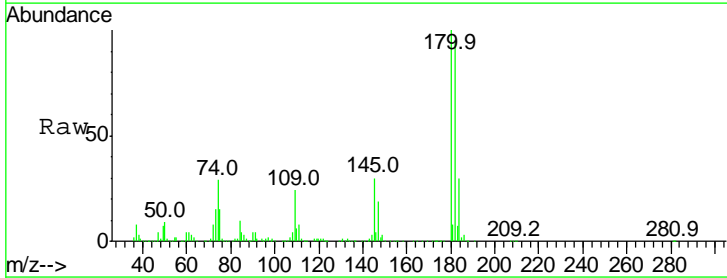
Ion	Ratio	Lower	Upper
180	100		
182	94.5	75.0	112.4
184	30.4	23.5	35.3
145	29.5	26.6	39.8

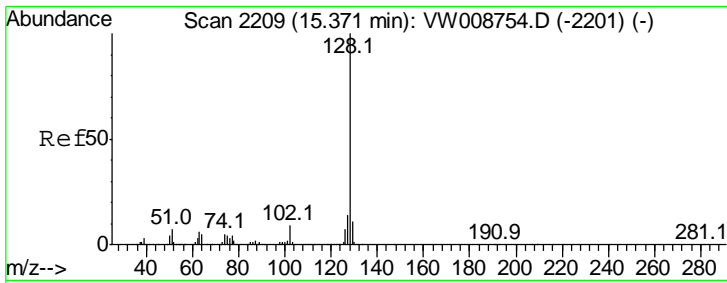


#68
 1,2,4-trichlorobenzene
 Concen: 117.703 ug/L
 RT: 15.14 min Scan# 2171
 Delta R.T. -0.00 min
 Lab File: VW008756.D
 Acq: 20 Feb 2019 12:57

Tgt Ion:180 Resp: 1151145

Ion	Ratio	Lower	Upper
180	100		
182	95.1	77.0	115.6
145	29.7	27.9	41.9



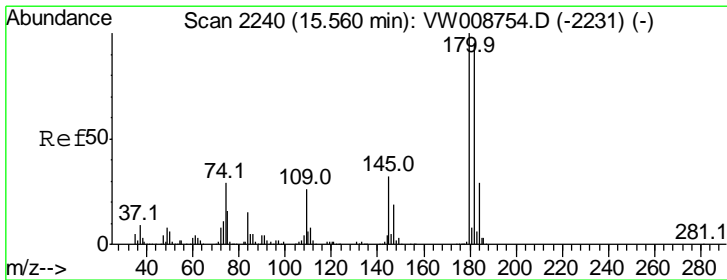
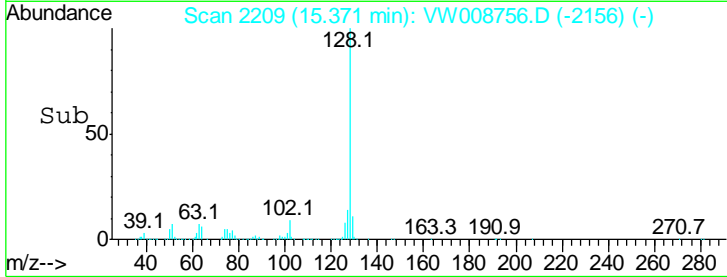
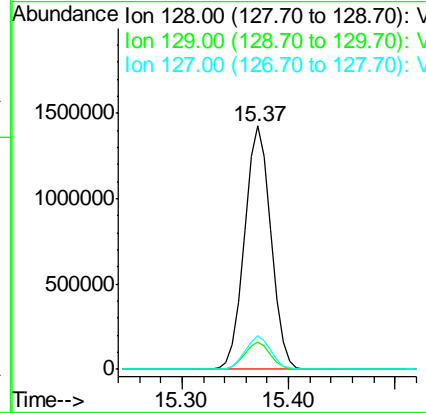
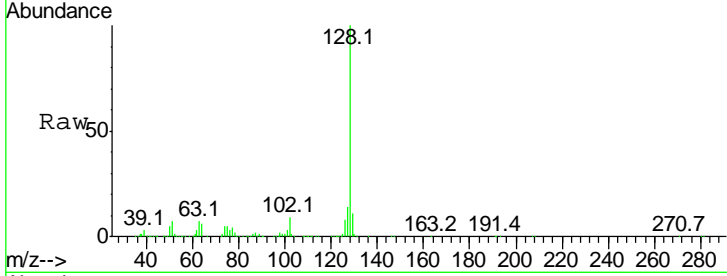


#69
 Naphthalene
 Concen: 111.807 ug/L
 RT: 15.37 min Scan# 2209
 Delta R.T. -0.01 min
 Lab File: VW008756.D
 Acq: 20 Feb 2019 12:57

Instrument :
 MSVOA_W
 ClientSampled :
 VSTD10005

Tgt Ion:128 Resp: 2475200

Ion	Ratio	Lower	Upper
128	100		
129	11.0	8.8	13.2
127	13.5	11.1	16.7



#70
 1,2,3-Trichlorobenzene
 Concen: 119.373 ug/L
 RT: 15.56 min Scan# 2240
 Delta R.T. -0.01 min
 Lab File: VW008756.D
 Acq: 20 Feb 2019 12:57

Tgt Ion:180 Resp: 1033514

Ion	Ratio	Lower	Upper
180	100		
182	94.3	75.8	113.6
145	31.8	29.4	44.2

