

Data Path : Z:\voasrv\HPCHEM1\MSVOA_W\Data\VW022322\
 Data File : VW022125.D
 Acq On : 23 Feb 2022 22:14
 Operator : SY/VA
 Sample : N1631-15
 Misc : 5.92g/10mL/MSVOA_W/SOIL
 ALS Vial : 1 Sample Multiplier: 1

Instrument :
 MSVOA_W
 ClientSampleId :
 DBRJ1

Integration Parameters: LSCINT.P

Integrator: RTE
 Smoothing : OFF
 Sampling : 1
 Start Thrs : 0.2
 Stop Thrs : 0

Filtering: 5
 Min Area: 0 % of largest Peak
 Max Peaks: 100
 Peak Location: TOP

If leading or trailing edge < 100 prefer < Baseline drop else tangent >
 Peak separation: 5

Method : Z:\voasrv\HPCHEM1\MSVOA_W\Method\SFAMWLM022322SMA.M
 Title : SFAM01.0

Signal : TIC: VW022125.D\data.ms

peak #	R.T. min	first scan	max scan	last scan	PK TY	peak height	corr. area	corr. % max.	% of total
1	2.153	37	41	42	rBV3	539	636	0.22%	0.030%
2	2.178	42	45	49	rVB4	771	1298	0.45%	0.061%
3	2.349	65	73	81	rBV	26175	47170	16.36%	2.224%
4	2.495	94	97	100	rBV2	1690	2150	0.75%	0.101%
5	2.580	109	111	113	rBV3	703	733	0.25%	0.035%
6	2.635	114	120	126	rVV7	3143	9090	3.15%	0.429%
7	2.806	146	148	153	rBV4	959	993	0.34%	0.047%
8	2.879	153	160	168	rBV	20322	42701	14.81%	2.013%
9	3.287	224	227	231	rVB4	452	571	0.20%	0.027%
10	3.659	286	288	290	rBV2	435	501	0.17%	0.024%
11	4.013	335	346	358	rBV2	31813	92726	32.15%	4.371%
12	4.129	360	365	372	rVV5	1315	3927	1.36%	0.185%
13	4.184	372	374	377	rVB	453	441	0.15%	0.021%
14	4.238	381	383	387	rVV	358	393	0.14%	0.019%
15	4.287	387	391	397	rVV3	321	573	0.20%	0.027%
16	4.379	404	406	408	rVV2	385	407	0.14%	0.019%
17	4.452	415	418	419	rVV2	497	422	0.15%	0.020%
18	4.665	449	453	455	rBV4	342	535	0.19%	0.025%
19	4.903	484	492	494	rBV5	4088	7927	2.75%	0.374%
20	5.049	512	516	518	rVB3	455	499	0.17%	0.024%
21	5.086	521	522	525	rVB2	530	438	0.15%	0.021%
22	5.202	534	541	542	rBV2	269	466	0.16%	0.022%
23	5.324	557	561	566	rBV2	409	847	0.29%	0.040%
24	5.470	582	585	587	rVB2	606	646	0.22%	0.030%
25	5.519	591	593	599	rVB3	311	601	0.21%	0.028%
26	5.933	658	661	662	rBV3	592	572	0.20%	0.027%
27	6.220	704	708	711	rVB2	392	538	0.19%	0.025%
28	6.256	711	714	719	rBV3	515	726	0.25%	0.034%
29	6.421	739	741	745	rVV2	426	503	0.17%	0.024%
30	6.494	752	753	757	rBV3	406	597	0.21%	0.028%
31	6.628	771	775	778	rBV3	504	838	0.29%	0.040%
32	6.903	816	820	823	rVV4	701	1018	0.35%	0.048%
33	7.079	842	849	858	rBV2	10366	28273	9.80%	1.333%
34	7.207	869	870	874	rVV3	475	435	0.15%	0.021%
35	7.518	919	921	924	rBV2	313	435	0.15%	0.021%
36	7.646	933	942	954	rVB2	52537	130965	45.41%	6.174%

Data Path : Z:\voasrv\HPCHEM1\MSVOA_W\Data\VW022322\
 Data File : VW022125.D
 Acq On : 23 Feb 2022 22:14
 Operator : SY/VA
 Sample : N1631-15
 Misc : 5.92g/10mL/MSVOA_W/SOIL
 ALS Vial : 1 Sample Multiplier: 1

Instrument :
 MSVOA_W
 ClientSampleId :
 DBRJ1

Integration Parameters: LSCINT.P

Integrator: RTE
 Smoothing : OFF
 Sampling : 1
 Start Thrs : 0.2
 Stop Thrs : 0

Filtering: 5
 Min Area: 0 % of largest Peak
 Max Peaks: 100
 Peak Location: TOP

If leading or trailing edge < 100 prefer < Baseline drop else tangent >
 Peak separation: 5

Method : Z:\voasrv\HPCHEM1\MSVOA_W\Method\SFAMWLM022322SMA.M
 Title : SFAM01.0

37	7.945	988	991	992	rBV2	601	613	0.21%	0.029%
38	8.134	1018	1022	1025	rBV3	633	751	0.26%	0.035%
39	8.183	1025	1030	1031	rBV2	297	452	0.16%	0.021%
40	8.274	1036	1045	1057	rBV2	94063	288375	100.00%	13.595%
41	8.402	1065	1066	1070	rBV4	646	836	0.29%	0.039%
42	8.433	1070	1071	1077	rVB3	621	1011	0.35%	0.048%
43	8.689	1111	1113	1115	rBV2	515	406	0.14%	0.019%
44	8.841	1127	1138	1150	rBV	113747	227797	78.99%	10.739%
45	8.951	1152	1156	1158	rVB2	335	546	0.19%	0.026%
46	9.073	1173	1176	1179	rVV3	671	766	0.27%	0.036%
47	9.274	1200	1209	1220	rBV2	64276	138247	47.94%	6.518%
48	9.420	1229	1233	1236	rVB3	677	953	0.33%	0.045%
49	9.664	1267	1273	1276	rBV4	939	1737	0.60%	0.082%
50	9.750	1284	1287	1289	rBV2	561	734	0.25%	0.035%
51	9.817	1294	1298	1299	rBV2	341	403	0.14%	0.019%
52	9.890	1307	1310	1311	rBV2	501	623	0.22%	0.029%
53	9.908	1311	1313	1318	rVB4	943	1272	0.44%	0.060%
54	9.951	1318	1320	1323	rVB3	426	514	0.18%	0.024%
55	9.981	1323	1325	1326	rBV	784	515	0.18%	0.024%
56	10.036	1326	1334	1341	rBV	31023	57717	20.01%	2.721%
57	10.213	1359	1363	1366	rBV3	382	548	0.19%	0.026%
58	10.323	1372	1381	1388	rBV	122160	216877	75.21%	10.224%
59	10.384	1388	1391	1396	rVB3	2652	5012	1.74%	0.236%
60	10.481	1403	1407	1408	rBV3	641	830	0.29%	0.039%
61	10.579	1416	1423	1428	rBV	21402	36892	12.79%	1.739%
62	10.621	1428	1430	1433	rVV3	1436	1306	0.45%	0.062%
63	10.701	1438	1443	1450	rVB3	4415	8031	2.78%	0.379%
64	10.762	1450	1453	1460	rVB4	922	1898	0.66%	0.089%
65	10.920	1473	1479	1489	rBV	40534	72000	24.97%	3.394%
66	11.054	1499	1501	1502	rBV2	1131	1079	0.37%	0.051%
67	11.097	1506	1508	1511	rVB3	753	693	0.24%	0.033%
68	11.176	1518	1521	1522	rBV3	833	911	0.32%	0.043%
69	11.231	1525	1530	1533	rBV5	838	1286	0.45%	0.061%
70	11.292	1537	1540	1541	rVB2	624	579	0.20%	0.027%
71	11.384	1552	1555	1556	rBV2	501	486	0.17%	0.023%
72	11.499	1571	1574	1575	rBV2	833	690	0.24%	0.033%
73	11.627	1588	1595	1605	rVV	135092	230399	79.90%	10.862%
74	11.725	1608	1611	1616	rVB3	3111	4955	1.72%	0.234%
75	11.761	1616	1617	1619	rBV2	657	389	0.13%	0.018%
76	11.841	1625	1630	1634	rBV2	3973	7075	2.45%	0.334%

Data Path : Z:\voasrv\HPCHEM1\MSVOA_W\Data\VW022322\
 Data File : VW022125.D
 Acq On : 23 Feb 2022 22:14
 Operator : SY/VA
 Sample : N1631-15
 Misc : 5.92g/10mL/MSVOA_W/SOIL
 ALS Vial : 1 Sample Multiplier: 1

Instrument :
 MSVOA_W
 ClientSampleId :
 DBRJ1

Integration Parameters: LSCINT.P

Integrator: RTE
 Smoothing : OFF Filtering: 5
 Sampling : 1 Min Area: 0 % of largest Peak
 Start Thrs: 0.2 Max Peaks: 100
 Stop Thrs : 0 Peak Location: TOP

If leading or trailing edge < 100 prefer < Baseline drop else tangent >
 Peak separation: 5

Method : Z:\voasrv\HPCHEM1\MSVOA_W\Method\SFAMWLM022322SMA.M
 Title : SFAM01.0

77	11.908	1639	1641	1647	rVB7	907	1394	0.48%	0.066%
78	12.024	1656	1660	1662	rBV3	408	655	0.23%	0.031%
79	12.127	1672	1677	1678	rBV3	1596	2005	0.70%	0.095%
80	12.164	1679	1683	1688	rVB2	6117	10699	3.71%	0.504%
81	12.255	1692	1698	1701	rVB6	1080	2130	0.74%	0.100%
82	12.286	1701	1703	1706	rBV3	697	699	0.24%	0.033%
83	12.335	1706	1711	1712	rBV4	1454	1832	0.64%	0.086%
84	12.420	1723	1725	1727	rBV2	736	850	0.29%	0.040%
85	12.463	1727	1732	1736	rBV4	2310	3916	1.36%	0.185%
86	12.603	1750	1755	1760	rVV	5897	9769	3.39%	0.461%
87	12.688	1763	1769	1775	rVB	57673	94975	32.93%	4.478%
88	12.859	1791	1797	1798	rBV5	2145	3267	1.13%	0.154%
89	12.895	1800	1803	1806	rBV3	5494	7232	2.51%	0.341%
90	13.158	1843	1846	1849	rBV5	2521	2917	1.01%	0.138%
91	13.249	1858	1861	1864	rVB2	3604	4013	1.39%	0.189%
92	13.377	1879	1882	1884	rBV2	1247	1828	0.63%	0.086%
93	13.554	1906	1911	1919	rBV	78270	131389	45.56%	6.194%
94	13.755	1940	1944	1948	rVB3	8207	12278	4.26%	0.579%
95	13.853	1954	1960	1968	rVB	60671	101024	35.03%	4.763%
96	14.194	2014	2016	2023	rVB8	4009	6673	2.31%	0.315%
97	14.261	2024	2027	2028	rBV3	2355	2261	0.78%	0.107%
98	14.383	2044	2047	2051	rVB6	3784	5373	1.86%	0.253%
99	14.493	2062	2065	2069	rBV5	4845	7021	2.43%	0.331%
100	15.322	2197	2201	2208	rVB8	4041	9156	3.18%	0.432%

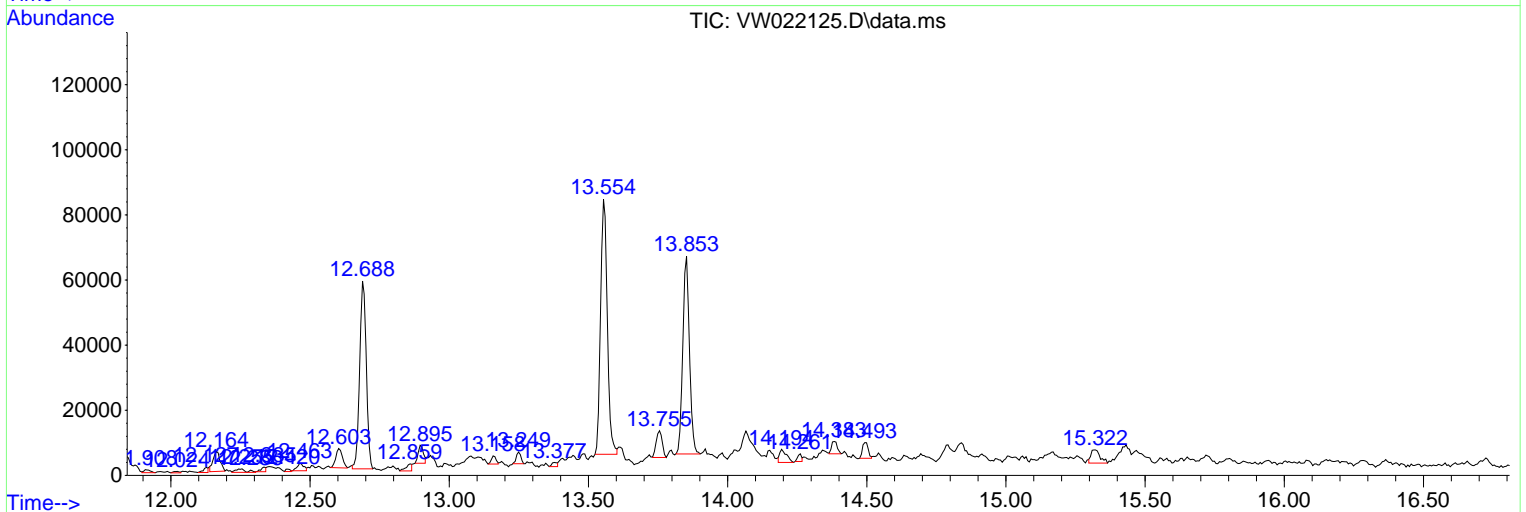
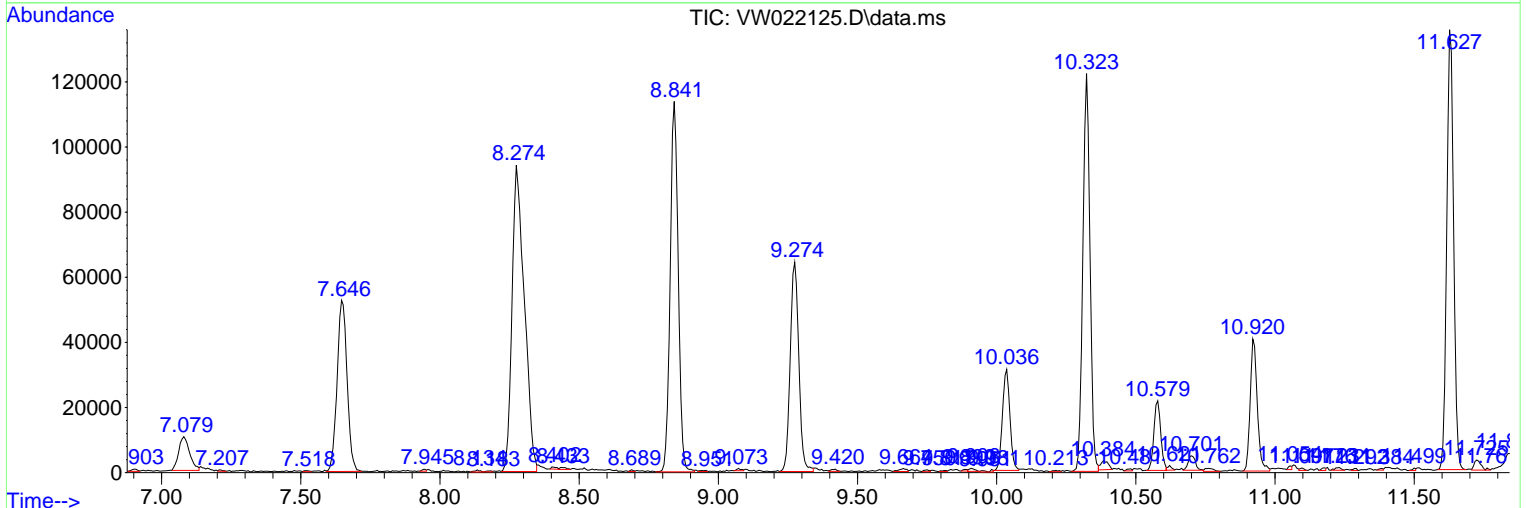
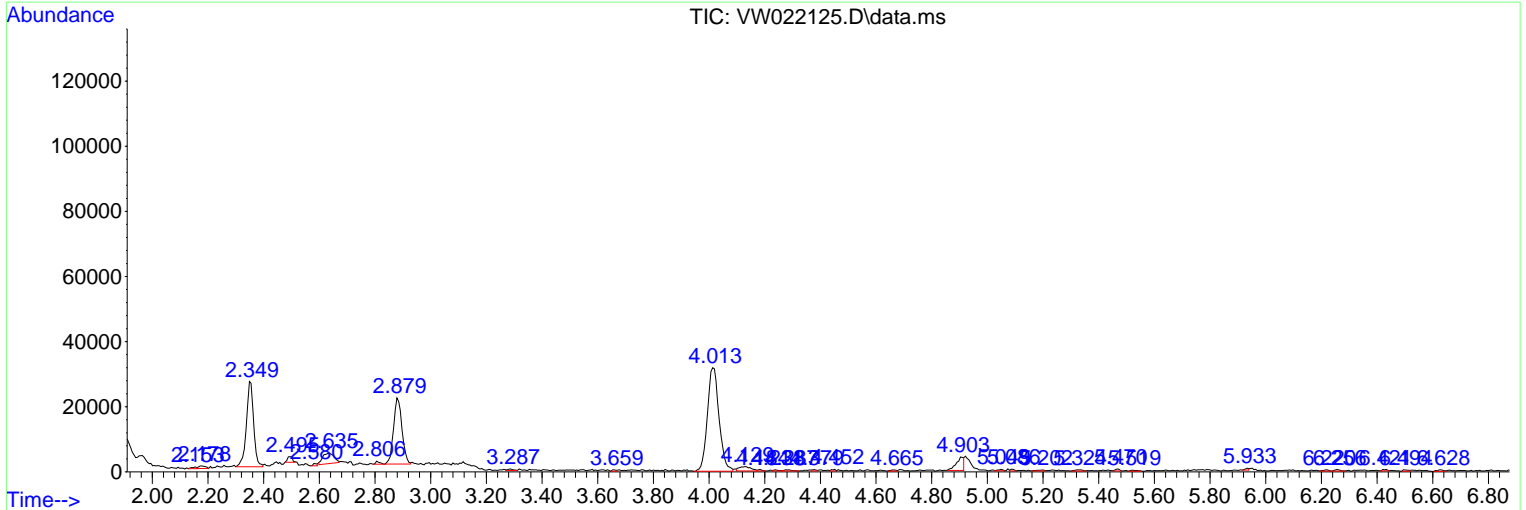
Sum of corrected areas: 2121151

Data Path : Z:\voasrv\HPCHEM1\MSVOA_W\Data\VW022322\
 Data File : VW022125.D
 Acq On : 23 Feb 2022 22:14
 Operator : SY/VA
 Sample : N1631-15
 Misc : 5.92g/10mL/MSVOA_W/SOIL
 ALS Vial : 1 Sample Multiplier: 1

Instrument :
 MSVOA_W
ClientSampleId :
 DBRJ1

Quant Method : Z:\voasrv\HPCHEM1\MSVOA_W\Method\SFAMWLM022322SMA.M
 Quant Title : SFAM01.0

TIC Library : C:\Database\NIST20.L
 TIC Integration Parameters: LSCINT.P



Data Path : Z:\voasrv\HPCHEM1\MSVOA_W\Data\VW022322\
 Data File : VW022125.D
 Acq On : 23 Feb 2022 22:14
 Operator : SY/VA
 Sample : N1631-15
 Misc : 5.92g/10mL/MSVOA_W/SOIL
 ALS Vial : 1 Sample Multiplier: 1

Instrument :
 MSVOA_W
 ClientSampleId :
 DBRJ1

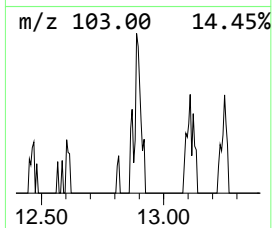
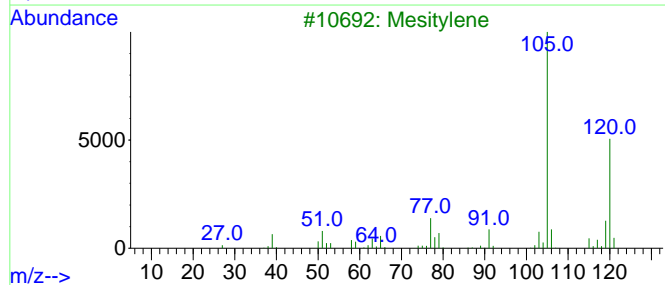
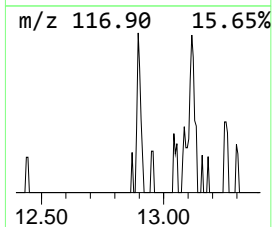
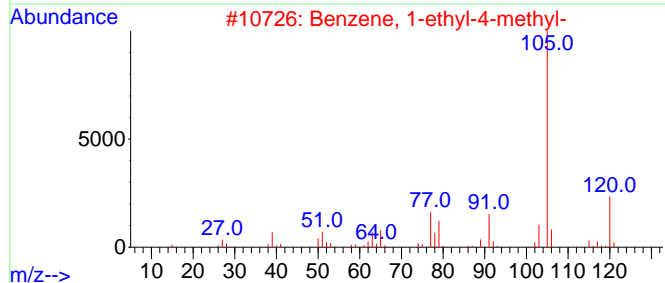
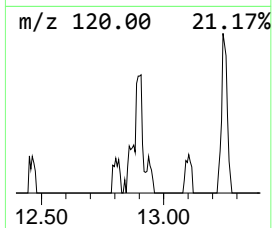
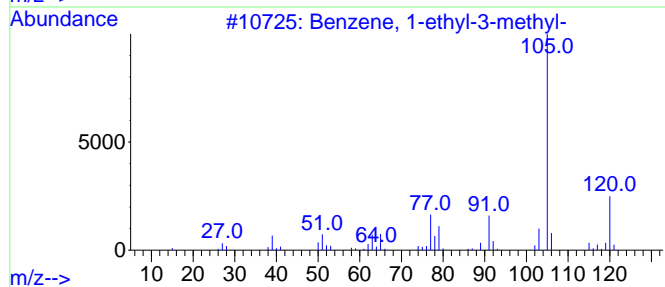
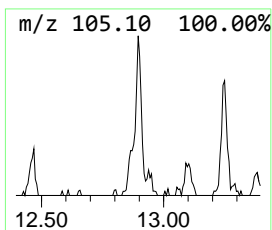
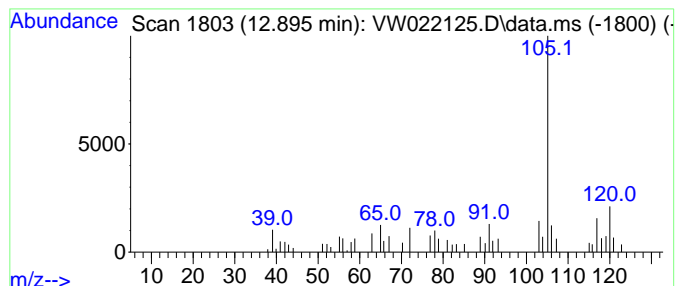
Quant Method : Z:\voasrv\HPCHEM1\MSVOA_W\Method\SFAMWLM022322SMA.M
 Quant Title : SFAM01.0

TIC Library : C:\Database\NIST0.L
 TIC Integration Parameters: LSCINT.P

 Peak Number 3 Benzene, 1-ethyl-3-methyl- Concentration Rank 5

R.T.	EstConc	Area	Relative to ISTD	R.T.
12.895	1.38 ug/L	7232	1,4-Dichlorobenzene-d4	13.554

Hit#	of	Tentative ID	MW	MolForm	CAS#	Qual
1	5	Benzene, 1-ethyl-3-methyl-	120	C9H12	000620-14-4	52
2		Benzene, 1-ethyl-4-methyl-	120	C9H12	000622-96-8	50
3		Mesitylene	120	C9H12	000108-67-8	50
4		Benzene, 1,2,4-trimethyl-	120	C9H12	000095-63-6	50
5		Benzene, 1-ethyl-4-methyl-	120	C9H12	000622-96-8	50



Data Path : Z:\voasrv\HPCHEM1\MSVOA_W\Data\VW022322\
 Data File : VW022125.D
 Acq On : 23 Feb 2022 22:14
 Operator : SY/VA
 Sample : N1631-15
 Misc : 5.92g/10mL/MSVOA_W/SOIL
 ALS Vial : 1 Sample Multiplier: 1

Instrument :
 MSVOA_W
 ClientSampleId :
 DBRJ1

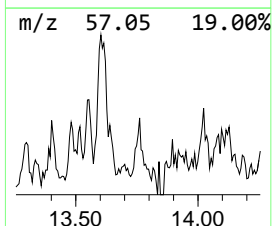
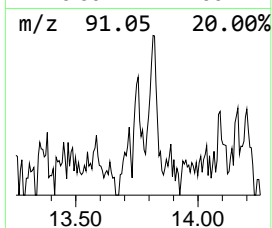
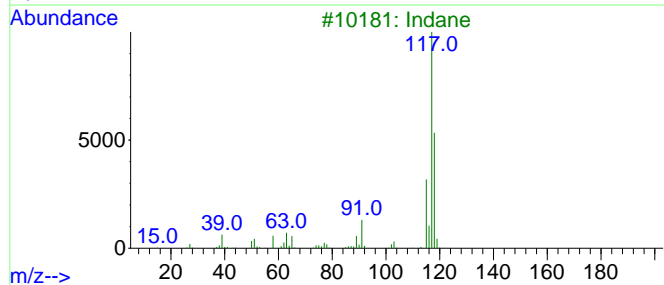
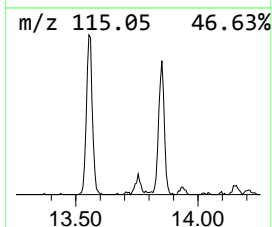
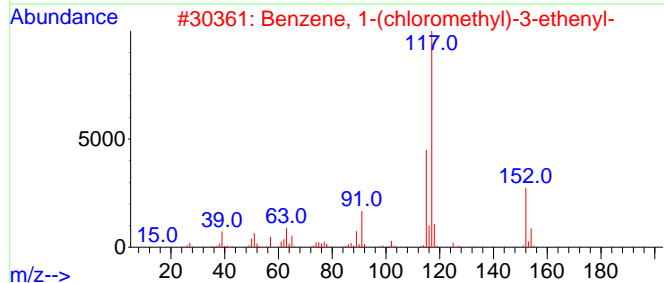
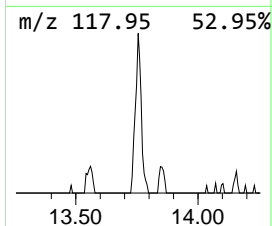
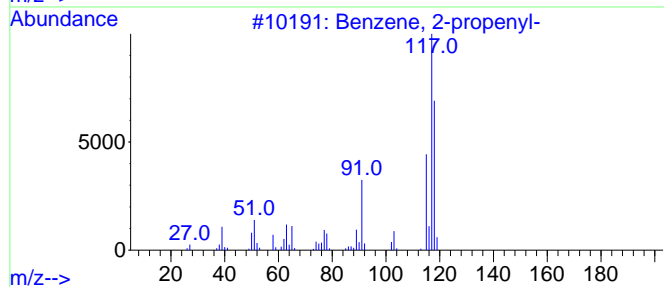
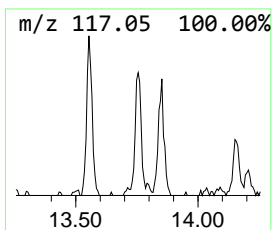
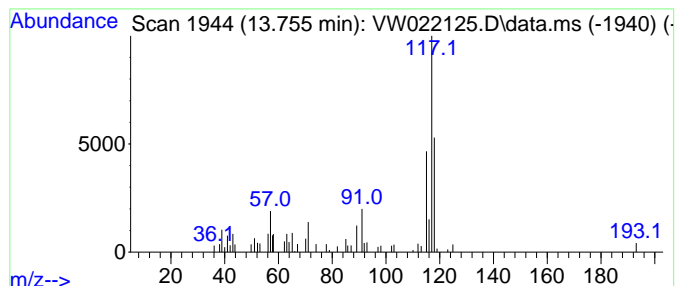
Quant Method : Z:\voasrv\HPCHEM1\MSVOA_W\Method\SFAMWLM022322SMA.M
 Quant Title : SFAM01.0

TIC Library : C:\Database\NIST20.L
 TIC Integration Parameters: LSCINT.P

 Peak Number 4 Benzene, 2-propenyl- Concentration Rank 2

R.T.	EstConc	Area	Relative to ISTD	R.T.
13.755	2.34 ug/L	12278	1,4-Dichlorobenzene-d4	13.554

Hit#	of	Tentative ID	MW	MolForm	CAS#	Qual
1	5	Benzene, 2-propenyl-	118	C9H10	000300-57-2	62
2		Benzene, 1-(chloromethyl)-3-ethe...	152	C9H9Cl	039833-65-3	59
3		Indane	118	C9H10	000496-11-7	58
4		Benzene, 1-ethenyl-4-methyl-	118	C9H10	000622-97-9	58
5		trans-Cinnamyl bromide	196	C9H9Br	026146-77-0	53



Data Path : Z:\voasrv\HPCHEM1\MSVOA_W\Data\VW022322\
 Data File : VW022125.D
 Acq On : 23 Feb 2022 22:14
 Operator : SY/VA
 Sample : N1631-15
 Misc : 5.92g/10mL/MSVOA_W/SOIL
 ALS Vial : 1 Sample Multiplier: 1

Instrument :
 MSVOA_W
 ClientSampleId :
 DBRJ1

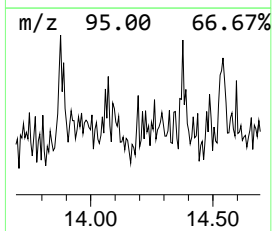
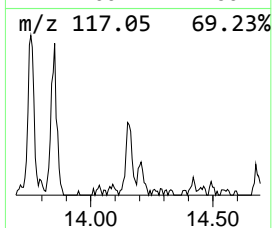
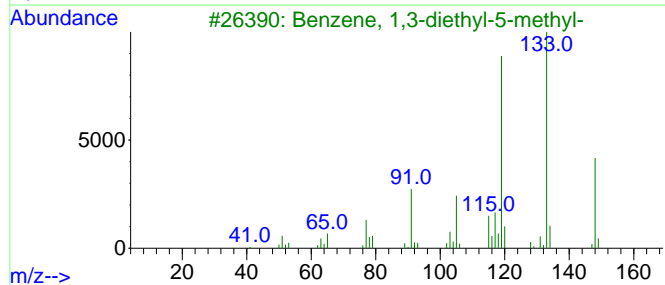
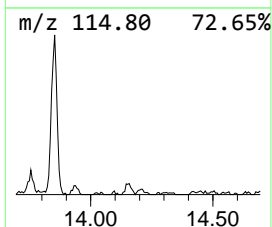
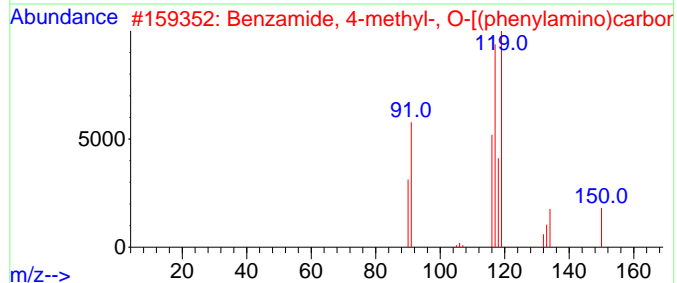
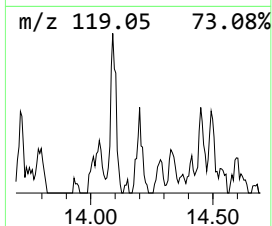
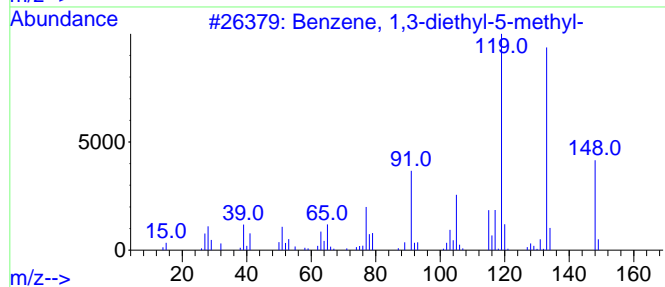
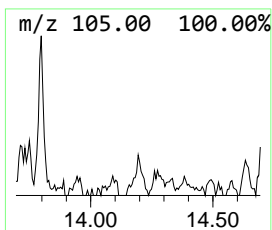
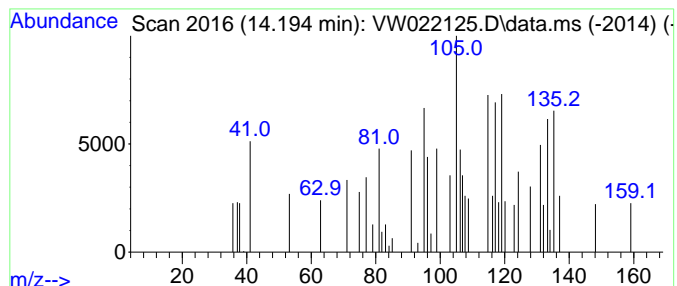
Quant Method : Z:\voasrv\HPCHEM1\MSVOA_W\Method\SFAMWLM022322SMA.M
 Quant Title : SFAM01.0

TIC Library : C:\Database\NIST20.L
 TIC Integration Parameters: LSCINT.P

 Peak Number 5 Benzene, 1,3-diethyl-5-methyl- Concentration Rank 7

R.T.	EstConc	Area	Relative to ISTD	R.T.
14.194	1.27 ug/L	6673	1,4-Dichlorobenzene-d4	13.554

Hit#	of	5	Tentative ID	MW	MolForm	CAS#	Qual
1			Benzene, 1,3-diethyl-5-methyl-	148	C11H16	002050-24-0	10
2			Benzamide, 4-methyl-, O-[(phenyl...	269	C15H15N3O2	1000112-26-6	10
3			Benzene, 1,3-diethyl-5-methyl-	148	C11H16	002050-24-0	9
4			1-Cyanoethyl-2-methylimidazole	135	C7H9N3	023996-55-6	9
5			Disiloxane, 1,1,3,3-tetramethyl-	134	C4H14OSi2	003277-26-7	9



Data Path : Z:\voasrv\HPCHEM1\MSVOA_W\Data\VW022322\
 Data File : VW022125.D
 Acq On : 23 Feb 2022 22:14
 Operator : SY/VA
 Sample : N1631-15
 Misc : 5.92g/10mL/MSVOA_W/SOIL
 ALS Vial : 1 Sample Multiplier: 1

Instrument :
 MSVOA_W
 ClientSampleId :
 DBRJ1

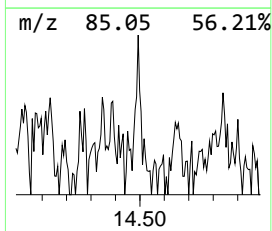
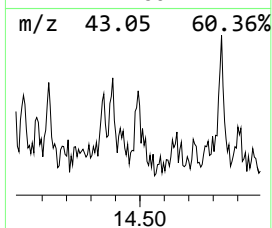
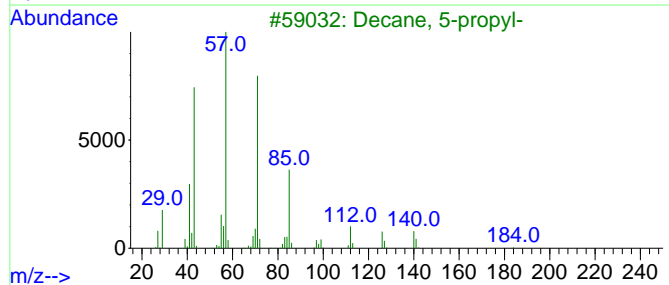
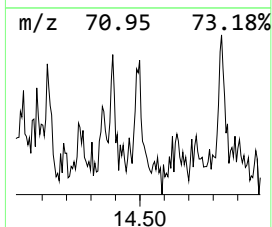
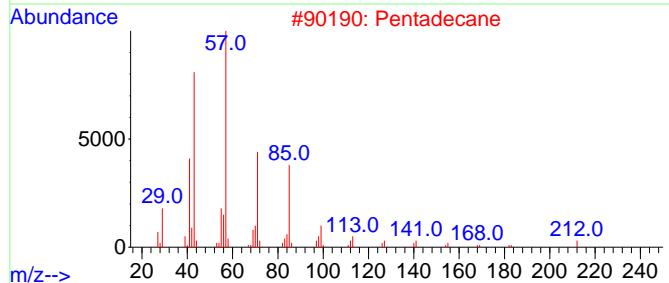
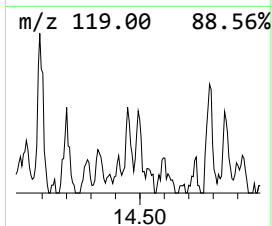
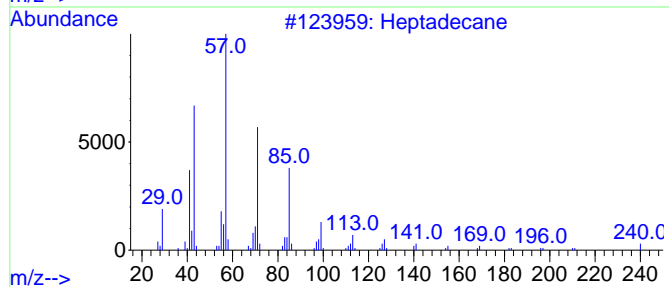
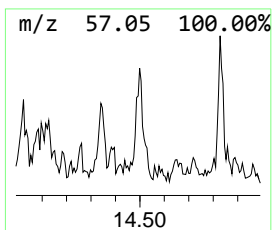
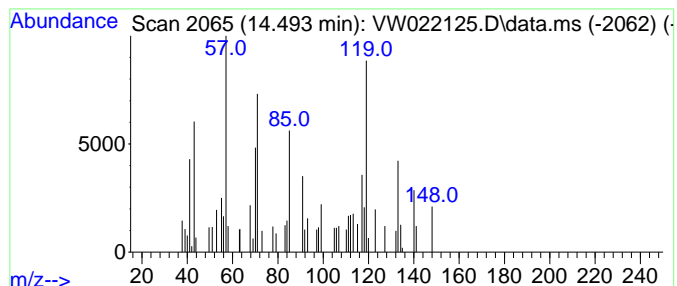
Quant Method : Z:\voasrv\HPCHEM1\MSVOA_W\Method\SFAMWLM022322SMA.M
 Quant Title : SFAM01.0

TIC Library : C:\Database\NIST0.L
 TIC Integration Parameters: LSCINT.P

 Peak Number 6 (DEL) Alkane: Straight-Chai... Concentration Rank 6

R.T.	EstConc	Area	Relative to ISTD	R.T.
14.493	1.34 ug/L	7021	1,4-Dichlorobenzene-d4	13.554

Hit#	of	5	Tentative ID	MW	MolForm	CAS#	Qual
1			Heptadecane	240	C17H36	000629-78-7	27
2			Pentadecane	212	C15H32	000629-62-9	27
3			Decane, 5-propyl-	184	C13H28	017312-62-8	27
4			9-methylheptadecane	254	C18H38	026741-18-4	27
5			Pentadecane, 2,6,10-trimethyl-	254	C18H38	003892-00-0	25



Data Path : Z:\voasrv\HPCHEM1\MSVOA_W\Data\VW022322\
 Data File : VW022125.D
 Acq On : 23 Feb 2022 22:14
 Operator : SY/VA
 Sample : N1631-15
 Misc : 5.92g/10mL/MSVOA_W/SOIL
 ALS Vial : 1 Sample Multiplier: 1

Instrument :
 MSVOA_W
 ClientSampleId :
 DBRJ1

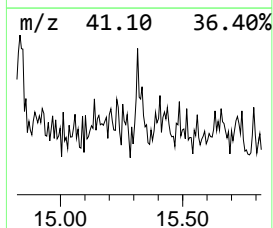
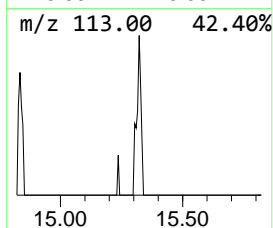
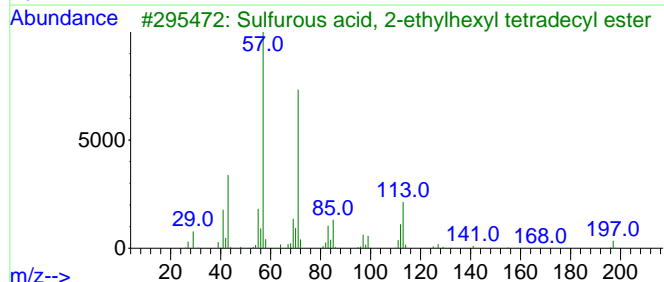
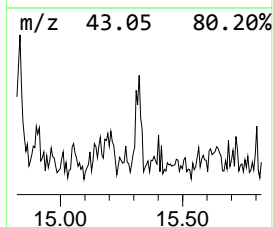
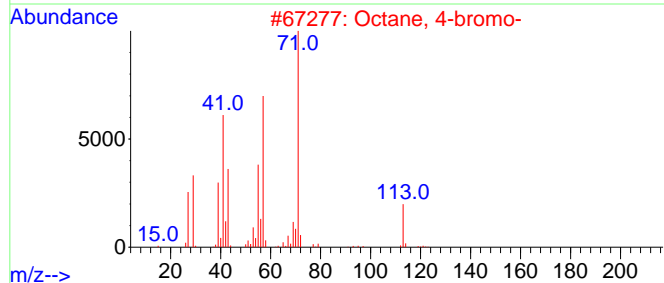
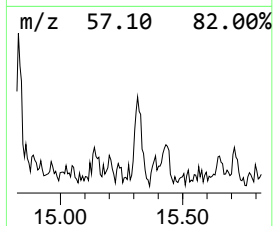
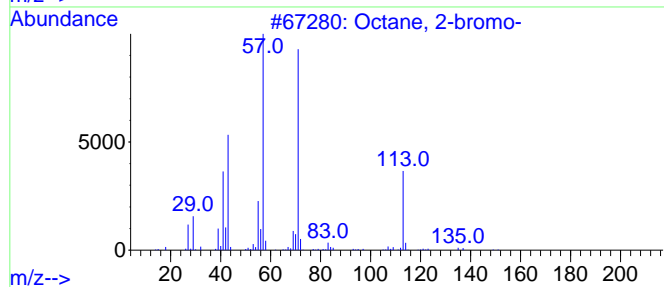
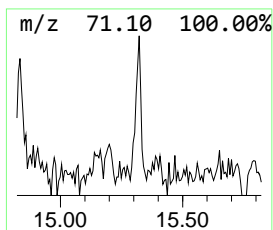
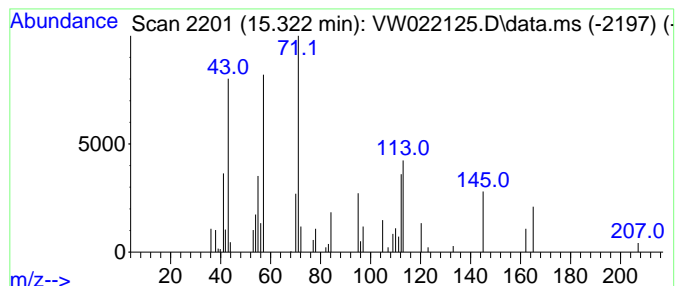
Quant Method : Z:\voasrv\HPCHEM1\MSVOA_W\Method\SFAMWLM022322SMA.M
 Quant Title : SFAM01.0

TIC Library : C:\Database\NIST20.L
 TIC Integration Parameters: LSCINT.P

 Peak Number 7 unknown-01 Concentration Rank 4

R.T.	EstConc	Area	Relative to ISTD	R.T.
15.322	1.74 ug/L	9156	1,4-Dichlorobenzene-d4	13.554

Hit#	of	5	Tentative ID	MW	MolForm	CAS#	Qual
1			Octane, 2-bromo-	192	C8H17Br	000557-35-7	38
2			Octane, 4-bromo-	192	C8H17Br	000999-06-4	38
3			Sulfurous acid, 2-ethylhexyl tet...	390	C22H46O3S	1000309-19-7	37
4			Octane, 2,3,6-trimethyl-	156	C11H24	062016-33-5	37
5			Nonane, 2,6-dimethyl-	156	C11H24	017302-28-2	37



Data Path : Z:\voasrv\HPCHEM1\MSVOA_W\Data\VW022322\
Data File : VW022125.D
Acq On : 23 Feb 2022 22:14
Operator : SY/VA
Sample : N1631-15
Misc : 5.92g/10mL/MSVOA_W/SOIL
ALS Vial : 1 Sample Multiplier: 1

Instrument :
MSVOA_W
ClientSampleId :
DBRJ1

Quant Method : Z:\voasrv\HPCHEM1\MSVOA_W\Method\SFAMWLM022322SMA.M
Quant Title : SFAM01.0

TIC Library : C:\Database\NIST0.L
TIC Integration Parameters: LSCINT.P

TIC Top Hit name	RT	EstConc	Units	Response	--Internal Standard--			
					#	RT	Resp	Conc
Benzene, 1-ethy...	12.895	1.4	ug/L	7232	3	13.554	131389	25.0
Benzene, 2-prop...	13.755	2.3	ug/L	12278	3	13.554	131389	25.0
Benzene, 1,3-di...	14.194	1.3	ug/L	6673	3	13.554	131389	25.0
(DEL) Alkane: S...	14.493	1.3	ug/L	7021	3	13.554	131389	25.0
unknown-01	15.322	1.7	ug/L	9156	3	13.554	131389	25.0